

1 **Two Decades of Endemic Dengue in Bangladesh (2000-2022): Trends,**
2 **Seasonality, and impact of Temperature and Rainfall Patterns on transmission**
3 **dynamics**

4
5 **Mohammad Nayeem Hasan¹, Ibrahim Khalil², Muhammad Abdul Baker Chowdhury³,**
6 **Mahbubur Rahman^{4,5}, Md Asaduzzaman⁶, Masum Billah⁶, Laila Arjuman Banu⁷,**
7 **Mahbub-ul Alam⁸, Atik Ahsan⁸, Tieble Traore⁹, Md. Jamal Uddin^{1,10} Roberto Galizi¹¹,**
8 **Ilaria Russo¹², Alimuddin Zumla¹³, Najmul Haider^{11*}**

9
10 ¹ Department of Statistics, Shahjalal University of Science and Technology, Sylhet 3114,
11 Bangladesh (MNH: nayeem5847@gmail.com, MJU: jamal-sta@sust.edu)

12
13 ² Department of Livestock Services, Ministry of Fisheries and Livestock, Bangladesh, Dhaka,
14 Bangladesh (IK: dribrahim.dls@gmail.com)

15
16 ³ Department of Neurosurgery, University of Florida College of Medicine, Gainesville, Florida
17 FL 32610, USA (MABC: baker.chowdhury@neurosurgery.ufl.edu)

18
19 ⁴ The Royal Veterinary College, University of London, Hawkshead Lane, North Mymms,
20 Hatfield, Hertfordshire, United Kingdom (Email: MR: dr_mahbub@yahoo.com)

21
22 ⁵ Institute of Epidemiology, Disease Control and Research (IEDCR), Ministry of Health and
23 Family Welfare, Mohakhali, Dhaka, Bangladesh (MR: dr_mahbub@yahoo.com)

24
25 ⁶ School of Digital, Technologies, and Arts, Staffordshire University, Staffordshire, UK (MB:
26 masum.billah@staffs.ac.uk , MA: Md.Asaduzzaman@staffs.ac.uk)

27
28 ⁷ Department of Anatomy, Bangabandhu Sheikh Mujib Medical University, Dhaka, Bangladesh
29 (dr.lailabanu@gmail.com)

30 ⁸ Environmental Intervention Unit, International Centre for Diarrhoeal Diseases Research,
31 Bangladesh (ICDDR,B), Dhaka-1212, Bangladesh (MUA: mahbubalam@icddr.org, AA:
32 atik.ahsan@icddr.org)

33
34 ⁹ Emergency Preparedness and Response Programme, WHO Regional Office for Africa, Dakar
35 Hub, Dakar, Senegal (TT: traoret@who.int)

36
37 ¹⁰ Department of General Educational and Development, Daffodil International University,
38 Dhaka, Bangladesh (MJU: jamal-sta@sust.edu)

39
40 ¹¹ School of Life Sciences, Faculty of Natural Sciences, Keele University, Keele, Staffordshire,
41 United Kingdom, ST5 5BG (NH: n.haider@keele.ac.uk, RG: r.galizi@keele.ac.uk).

42
43 ¹² School of Medicine, Faculty of Medicine and Health Sciences, Keele University,
44 Staffordshire, ST5 5BG, United Kingdom (IR: i.russo@keele.ac.uk)

45
46 ¹³ Division of Infection and Immunity, Centre for Clinical Microbiology, University College
47 London and NIHR-BRC, University College London Hospitals, London, United Kingdom (AZ:
48 a.zumla@ucl.ac.uk).

49
50 ***Corresponding author (NH):** Dr Najmul Haider, School of Life Sciences, Keele University,
51 Huxley Building, Room 122, Keele, Staffordshire, ST5 5BG, United Kingdom,

52

53 **Abstract:**

54 **Background:** The objectives of this study were to compare the dengue virus (DENV) infection,
55 deaths, case-fatality ratio, as well as meteorological parameters between the first and the
56 recent decade (2000-2010 vs. 2011-2022) and to understand the trends, seasonality, and impact
57 of change of temperature and rainfall pattern on transmission dynamics of Dengue in Bangladesh

58
59 **Methods:** For the period 2000-2022, dengue cases and death data from Bangladesh's Ministry of
60 Health and Family Welfare's website, and meteorological data from the Bangladesh Meteorological
61 Department were analyzed. Mann-Kendall and Sen's slop tests were used for trends and variations
62 and fitted a time series Poisson regression model to identify the impact of meteorological
63 parameters on the incidence of dengue cases. A forecast of dengue cases was performed using an
64 autoregressive integrated moving average model.

65
66 **Results:** Over the past 22 years, a total of 244,246 dengue cases were reported including 849 deaths
67 (Case fatality ratio [CFR] =0.34%). The mean annual number of dengue cases increased eight-fold
68 during the second decade, with 2216 cases during 2000-2011 vs. 18,321 during 2012-2022. The
69 mean annual deaths have doubled (21 vs. 46) although the overall CFR had decreased to one-third
70 (0.69 vs 0.24). Between the periods, the annual temperature increased by 0.49 °C, and rainfall
71 decreased by 314 mm despite increasing unusual rainfall in the pre-and-post monsoon period. An
72 increasing trend of dengue cases is observed with a much stiffer rise after 2018. Monthly mean
73 temperature (Incidence risk ratio [IRR]: 1.26), first-lagged rainfall (IRR: 1.08), and second-lagged
74 rainfall (IRR: 1.17) were significantly associated with monthly dengue incidence.

75
76 **Conclusions:** The increased local temperature and unusual rainfall might have contributed to the
77 increased incidence of DENV infection in Bangladesh. Community engagement, vector control,
78 and destruction of mosquito habitats are key to controlling dengue.

79
80 **Keywords:** Dengue, Bangladesh, Climate change, Temperature, Rainfall

81

82

83 **Introduction:**

84 Dengue fever is a mosquito-borne diseases (MVD) caused by four distinct serotypes of the
85 dengue virus (DENV) of the Flaviviridae family¹. DENV is transmitted to humans by the bites
86 of the female *Aedes* species mosquitoes including *Ae. aegypti* and *Ae. albopictus*^{1,2}. DENV is
87 endemic in over 125 countries of the world and the number of cases globally reported to WHO
88 continues to increase every year³. Annually, an estimated 390 million dengue infections are
89 recorded across the world, including 96 million clinical cases^{4,5}. Most infections (>80%) are
90 self-limiting with no or mild clinical manifestation resulting in lifelong immunity for serotype⁶.
91 However, infections with different serotypes, known as secondary dengue infection, may result
92 in severe dengue with a higher case-fatality ratio⁷.

93
94 Currently, South and Southeast Asia is considered to be the hotspot of DENV infection with
95 more than 50% of cases recorded in the regions⁸. The first official DENV outbreak in
96 Bangladesh was reported in 2000, and since then, dengue has become endemic in the country
97 posing a significant health challenge⁹. Over the past few years, the number of dengue cases has
98 been steadily increasing with significant seasonal and regional variations. Analysis of data from
99 2000 to 2017 revealed that almost half of the dengue cases occurred during the monsoon season
100 (May-August) and the post-monsoon season (September-December)¹⁰. However, a shift in
101 seasonal patterns has been observed since 2014, with dengue cases being reported during the pre-
102 monsoon season as well¹⁰. During 2015-2017, the number of dengue cases during the pre-
103 monsoon season was more than seven times higher compared to the previous 14 years¹⁰.

104

105 Climate change including changes in precipitation, temperature, and humidity, as well as rapid
106 unplanned urbanization, were identified as strong predictors of an ecological imbalance that has
107 led to an increase in dengue cases in Bangladesh¹⁰. This suggests that the dengue transmission
108 season could eventually extend year-round, with a higher chance of outbreaks occurring at any
109 time of the year. Identifying trends and seasonality in dengue cases can aid health authorities and
110 relevant public and private administrations in effectively allocating resources to control the
111 spread of the DENV through vector control. The objectives of our study were to: i) compare the
112 annual and monthly cases in the first [2000-2010] and recent decade [2011-2022], ii) identify the
113 trend and seasonality of dengue cases, iii) quantify the impact of climatic parameters for the
114 monthly incidence of dengue cases in the country and iv) forecast the annual incidence of dengue
115 cases for next decade.

116

117 **Methods:**

118 **Data sources:**

119 The data on the number of reported dengue-infected people have been extracted from the
120 Directorate General of Health Services (DGHS)'s website from January 2000 to December 2022
121¹¹. We used the definition of dengue cases used by the Ministry of Health and Family Welfare,
122 Bangladesh, which was discussed in our earlier article¹². We collected three-hourly temperature
123 and daily rainfall data from Bangladesh Meteorological Department (BMD) over the period
124 2000–2022¹³ for the meteorological station located in Mirpur, Dhaka.

125

126 **Variables**

127 The monthly number of dengue cases was used as the primary outcome variable. Two climatic
128 variables- temperature and rainfall are used as the covariates for the regression analysis. In
129 addition, two lagged variables rainfall in lag 1 and lag 2 have also been used as the predictors for
130 the incidence of monthly dengue cases to capture the actual impact of those meteorological
131 parameters. We also used monthly mortality data for comparison between two decades.

132

133 **Statistical analysis**

134 We analyzed the monthly dengue incidence and meteorological data for the period of 2000-2022.
135 In the first stage, descriptive analysis was conducted to determine the characteristics of
136 confirmed dengue cases and deaths with mean, and standard deviation in each year and each
137 month for the entire period. Then, we compared dengue cases, deaths, and weather parameters in
138 two decades (2000-2010 and 2011-2022) using paired sample t-test. Next, we calculated the
139 monthly growth factor (GF) of dengue cases by dividing the number of dengue cases reported in
140 each month by the number of dengue cases reported in the previous month and repeating this
141 process for each month from 2000 to 2022¹⁴. The formula for the growth factor can be given by

$$142 \quad GF_t = \frac{N_{t+1} + 1}{N_t + 1}$$

143

144 where N_t indicates the number of dengue cases in t th month. To avoid the occurrence of zeros in
145 some months, we added 1 to the total number of cases for each month. This allows us to obtain a
146 real-valued measurement of the GF for the above equation. The distribution of GF was skewed;
147 therefore, we used the first natural log transformation before the data was further examined.

148 However, we have also performed a reverse transformation of the log (GF) values by
149 exponentiating values to convert them to the original scale for ease of interpretation¹⁴.
150
151 We performed forecasting using the autoregressive integrated moving average (ARIMA) model.
152 The ARIMA model is a data-driven, exploratory strategy that enables us to fit a suitable model
153 and forecast values. The ARIMA model consists of autoregressive (p) terms, differencing (d)
154 terms, and moving average (q) operations, and it is denoted as ARIMA (p, d, q)¹⁵. To select the
155 appropriate autoregressive and moving average orders, the autocorrelation function (ACF) and
156 partial autocorrelation function (PACF) were examined. Additionally, the differencing
157 parameter, represented by "d," indicates the number of times the time series is different to
158 achieve stationarity. An ARIMA (p, d, q) process refers to an autoregressive moving average
159 (ARMA) model that has been differenced "d" times to obtain stationarity (Hasan et al. 2021). By
160 removing high-frequency noise from the data, the model discovers local patterns by assuming
161 that the time series values are linearly related. We also conducted a Mann-Kendall (M-K) trend
162 analysis to determine possible upward or downward trends¹⁷. We also performed the Sen's slope
163 test to assess variations in annual dengue cases and deaths¹⁸.
164
165 We, then used a time series count generalized linear model (GLM), more specifically, a time-
166 series Poisson regression model to determine whether the climatic factors were associated with
167 the dengue cases over time¹⁹. The non-normality, heteroscedasticity, and non-linearity that
168 characterize count data can be fitted easily using GLMs. The time-series observations may
169 possess autocorrelation and they might be nonnegative integers, and thus GLM is useful in
170 overcoming both issues [20, 21, 22]. Monthly dengue cases were utilized as the outcome variable

171 in this model, along with data from the Bangladesh Meteorological Department (BMD) on
172 temperature and rainfall. To capture the actual impact of rainfall on dengue incidence across
173 time, we additionally employed two lagged variables of meteorological elements, mainly rainfall
174 in lag 1 and 2. After eliminating predictors with a higher multicollinear relationship, we have
175 arrived at average temperature, rainfall (in lag 1), and rainfall (in lag 2) as the final set of
176 predictors for the monthly dengue incidence in Bangladesh. We used the statistical program
177 RStudio, version 3.5.2.2 for the analyses ²⁰.

178

179 **Results:**

180 Between 2000 and 2022, Bangladesh reported a total of 244,246 DENV infection with an annual
181 mean of 10,161 cases (\pm standard deviation [SD]=23,971) including 849 fatal outcomes
182 indicating a case-fatality ratio (CFR) of 0.34%. Between 2000 to 2010, the mean annual number
183 of DENV infection was 2,216 (\pm 2,123) which has increased over eight folds compared to the
184 following decade (2011-2022) at 18,321 (\pm 31,778) (**Table 1**). Between these two periods, the
185 mean number of annual deaths due to DENV infection has increased by 2.2 times (21.18 cases vs
186 46.58 cases). However, the CFR of DENV infection has decreased to almost one-third between
187 two decades (0.69 vs 0.24) (**Table 1**).

188

189 The highest monthly average number of DENV infections was recorded in August (n=3407
190 cases) and the lowest was in February (n=7.3 cases) (**Fig 1**). The highest number of annual
191 DENV infections was reported in 2019 with 101,354 and the highest number of deaths was
192 recorded in 2022 with 281 deaths, which was 35% of total deaths recorded in the past 23 years in

193 Bangladesh (**Fig 1**). Most of the dengue-related deaths were recorded after 2018, with more than
194 69% (n=550) deaths recorded during this time (**Fig 1**).

195
196 The average annual temperature was 26.35 °C (SD=3.72) during the first decade (2000-2010)
197 and 26.84 °C (SD=3.76) during the recent decade (2011-2022) (**Table 1**). The increase of 0.49 °
198 C temperature was equivalent to 4292 degree-hour/year of heat (365 days X 24 hours X 0.49 °
199 C). The annual rainfall has decreased by 314 mm between two decades (2078.66 mm vs. 1764.50
200 mm) (**Table 1**), of which 308 mm decreased during the monsoon (July-October) season and only
201 6 mm decreased during the non-monsoon period. Compared to the first decade (2000-2010), an
202 unusually higher amount of monthly precipitation has been observed in the second decade (2011-
203 2022) with most of the months recording extreme rainfall (more than 3rd quantile value of
204 monthly rainfall for the decade) shown as an outlier of the box plot (**Fig 2**).

205
206 The overall mean GF from month to month was 1.37 (SD=0.86). However, in four months
207 (April-July), the monthly GF was above one (lower 95% confidence interval >1), while for the
208 rest of the years, the monthly GF was less than 1 (95% confidence interval crossed 1). More
209 than 77% (71/92) of months between April and July for the period 2000–2022 had mean monthly
210 GF > 1 compared to only 16% (30/184) of months between August and March of the same
211 period. June had the highest GF with a mean value of 3.47 indicating that cases would be more
212 than three times higher in the next month (July). The lowest GF was recorded in December with
213 a mean of 0.54 (95% CI: 0.40 to 0.69) indicating that cases in January would be halved
214 compared to the number of cases recorded in December (**Fig. 3**). In the M-K trend analysis, we
215 found a positive trend of reported dengue cases (p < 0.001 and tau = 0.26). In Sen's slope test, the

216 slope was 171.67 (95% CI: -46 to 687) indicating an upward trend in upcoming months (**Table**
217 **2**).

218
219 In the GLM, the estimated effect of each variable is presented as the incidence risk ratio (IRR).
220 The model suggests that dengue cases would rise by 26% for a one-degree centigrade (°C)
221 temperature increase. For each additional centimeter (cm) of rainfall in the first lagged month,
222 the number of dengue cases increased by 8% (IRR= 1.08 [95% CI: 1.07-1.09]), and in the second
223 lagged month increase the cases by 17% [IRR=1.17 (95% CI: 1.16 -1.18)] (**Table 3**).

224
225 In the ARIMA model, we detected an increasing trend for the first few years, which then started
226 to decline. However, a stiff rise in cases was observed after 2018 except for 2020 (the first year
227 of the Covid-19 pandemic). The forecasted value showed a continuously increasing trend of
228 DENV infection in Bangladesh (**Fig 4**).

229

230

231 **Discussions:**

232 Dengue is currently a worrying and important public health challenge for Bangladesh. Our
233 analysis showed that the number of dengue cases has increased eight times and deaths have
234 doubled, and the CFR dropped to one-third between the first and second decade of this century in
235 Bangladesh. Between these periods, the annual temperature increased by 0.49 °C, and annual
236 rainfall decreased by 314 mm, despite changes in rainfall patterns with unusually early or late
237 rainfall outside the typical monsoon season in Bangladesh (July-October)²¹. The monthly

238 growth factor remains above one significantly for four months (April to July) which overlaps the
239 hot and humid period of the year. Monthly mean temperature, monthly first-lagged rainfall, and
240 second-lagged rainfall played a critical role in monthly dengue incidence in Bangladesh.

241
242 The increase of 0.49 °C temperature adds approximately 4292-degree-hours equivalent heat per
243 year in the country. This additional heat would favor mosquito-borne disease transmission. For
244 dengue virus transmission, approximately 305-degree-hours equivalent heat is needed to
245 accomplish the extrinsic incubation period in *Aedes* mosquitoes at 26° C²². Thus, the additional
246 0.49°C temperature will add the burden of more than 14 generations of infectious mosquitoes in
247 the environment of Bangladesh. An 8-fold increase in dengue cases is an indication of such
248 changes in temperature in the country. Our model identified a significant role of monthly mean
249 temperature with an additional 1 °C temperature increasing the monthly cases by 26%. Earlier
250 studies showed that for every 1 °C increase in temperature, dengue cases increased by 61% in
251 Australia, 12-22% in Cambodia, 5% in Vietnam, and 2.6% in Mexico²³.

252
253 Rainfall facilitates mosquito breeding and plays an important role in mosquito-borne disease
254 transmission. Although we found a 15% reduction in annual rainfall in the recent decade from
255 the immediate past decade, we found an increase in unusually high rainfall in pre-and-post
256 monsoon season. Our model showed that both the first and the second lagged month's rainfall
257 increased monthly cases by 8% and 17%, respectively. These findings are consistent with earlier
258 studies in Bangladesh that showed that peak dengue cases occurred two months after the peak
259 rainfall²⁴ or an additional rainy day per month increased dengue cases by 6% in the succeeding
260 month²⁵. Similar findings were reported in Vietnam with the dengue incidence being associated

261 with both first and second-lagged months²⁶. In Timor-Leste, a 47% increase in dengue incidence
262 was recorded with an additional 1 mm seasonal rainfall increase²⁷. These findings are
263 biologically plausible as rainfall allows approximately two generations of dengue cases over a
264 month. A generation interval is a time difference between a primary human infection and a
265 second human infection originating from the first human case through two bites of the
266 mosquitoes²⁸. To accomplish a generation interval the virus and mosquito undergo several
267 phases including intrinsic incubation period in humans, human-mosquito transmission (first bite),
268 extrinsic incubation period in mosquitoes, blood meal digestion period, and finally mosquitoes-
269 to-human transmission (2nd bite)²⁸. Ideally, for DENV, the generation interval completes at
270 around 16 days at 28-32 °C²⁸.

271
272 Bangladesh's dengue season is characterized by hot and wet periods running between June to
273 August. This is the period with the highest amount of rainfall in the country facilitating Aedes
274 mosquito breeding in the country²⁹. The monthly mean growth factor above 1 for April – June
275 indicates that for each of these months, the incidence of dengue cases will surpass the current
276 month. Thus, we suggest starting vector control intervention in April in Bangladesh.

277
278 Globally and regionally in South and Southeast Asia, dengue cases are increasing. DENV
279 infection increased by more than 46% between 2015 and 2019 in Region⁸. In 2023, up until 31
280 May, a total of 1515,460 DENV infections were recorded in Brazil with 387 deaths³⁰. In
281 Malaysia, a total of 43,619 DENV infections have been recorded by 21 May 2023³⁰. We found
282 an increasing trend of DENV infection in Bangladesh. This increasing trend was much stiffer
283 after the serotype DENV-3 was introduced in the country in 2018¹². This increased trend is

284 possibly linked with climate change in the region attributed to increased temperature and unusual
285 rainfall, urbanization, population growth, inadequate water supply and storage practice, poor
286 sewer, and waste management system, rise in global commerce and tourism ⁸.

287

288 The case fatality ratio (CFR) of primary dengue infection is very low with an estimation of
289 0.018% - 0.1% ³¹. However, the CFR of secondary dengue infection is high, although precise
290 estimates are not available, some studies show more than 1% and reaching up to 4% ³².

291 Bangladesh's overall CFR of dengue infection (0.34%) seems slightly higher considering the
292 overall CFR reported in other South and Southeast Asian countries ⁸. However, more than 69%
293 of dengue-related deaths in Bangladesh were recorded after the introduction of the serotype
294 DENV-3 in 2019. Thus, secondary infection is likely contributing to higher dengue-related
295 deaths in Bangladesh. In addition, the CFR of the dengue virus infection might have been
296 affected by a lack of active surveillance and missing the mild and asymptomatic cases, and not
297 recording the cases outside the public hospital and few selected private hospitals in Bangladesh
298 or weaker health care system in the country¹². In some years, the CFR was very high, for
299 example, in the year 2003, the CFR was 2.1 (total cases 486), in the year 2000, 1.68 (total cases
300 5,551), and in 2022, 0.45 (total cases 62,382). On the other hand, the CFR decreased in the
301 second decade. This improvement is probably associated with improved access to the health care
302 system, a better understanding of the treatment protocol including the availability of clinical
303 management guidelines and training for the health care providers, better availability of
304 Information, Education, and Communication (IEC) materials, community engagement and
305 expansion of surveillance system to more hospitals in the surveillance system across the county
306 in the recent years, and overall improvement of the economic condition of the country ³³⁻³⁵.

307
308 Two large dengue outbreaks occurred in Bangladesh in the year 2019 and 2022 both
309 characterized by unusual weather patterns and the occurrence of two different serotypes. The
310 2019 outbreak was characterized by early rainfall of 120 mm in February compared to a monthly
311 mean of 20 mm precipitation, along with the introduction of a new serotype of DENV-3 in the
312 country ¹². The 2022 outbreak was characterized by the late onset of rainfall with 297 mm
313 rainfall in October compared to a monthly mean of 156 mm, and thus prolongation of vector
314 transmission season along with the introduction of a new serotype, DENV-4 in the country ²⁹.
315 The occurrence of a new serotype exposed a large naïve population in a densely populated
316 country like Bangladesh. A large proportion of the population is already infected with one of the
317 serotypes of DENV with more than 80% of people living in Dhaka having antibodies against
318 DENV ²⁴. Another study predicted an estimated 40 million people being infected with DENV
319 nationally and 2.4 million annual infections ³⁶. Thus, any subsequent infections raise the risk of
320 developing severe dengue hemorrhagic fever through antibody-dependent enhancement (ADE) ⁷.
321 The deaths of many people in the year 2022 when the new serotype DENV-4 was introduced
322 were probably associated with secondary dengue infection.
323
324 Controlling vector-borne diseases in tropical countries where temperatures, humidity, and
325 rainfall remain favorable for breeding mosquitoes during most periods of the year is a difficult
326 task²⁹. Concerns were raised over the development of insecticide resistance ^{12,37} and the failure of
327 developing a successful dengue vaccine ³⁸. The prospect of *Wolbachia*-related intervention is
328 bright but still far from applying on a national scale considering the expenses and technicalities
329 associated with this. In this situation, an integrated and holistic vector management plan while

330 engaging the local communities is key for controlling Aedes-borne diseases, especially in
331 resource-limited countries. Regular destruction of mosquito breeding sites and increasing
332 surveillance for detecting active cases are key in controlling dengue virus infection. Continuous
333 active dengue surveillance will enable early detection of cases and outbreaks. Public health
334 authorities will be able to identify areas where the disease is spreading, take immediate action to
335 control mosquito populations, isolate infected patients, and implement public awareness
336 campaigns to educate people about preventive measures. Early detection and response can help
337 prevent the further spread of the disease and reduce its impact on individuals and communities.
338
339 Regular destruction of mosquito breeding habitats and increasing surveillance for detecting
340 active cases should prioritize in controlling dengue virus infection in Bangladesh. Policymakers
341 need to design an Aedes-borne disease management plan by considering a range of diseases that
342 Aedes mosquito can transmit including Chikungunya, yellow fever, Zika virus, West Nile,
343 Japanese Encephalitis, Eastern Equine Encephalitis, Ross River, Rift Valley fever, and the
344 LaCrosse virus²⁹.
345
346 Our data should be viewed instead of several weaknesses of our study. We relied on the reported
347 number of cases from the Ministry of Health and Family Welfare's website, which mainly relies
348 on passive reporting systems from the selected health facilities in the country¹². These numbers
349 seem to be an underestimation of actual cases. A modeling study based on the national
350 seroprevalence of DENV antibodies predicted an annual infection of 2.4 million cases³⁹.
351 However, dengue infection is underestimated globally as it is difficult to diagnose asymptomatic
352 or mild cases that never reach healthcare settings. Although mild cases are missed more

353 frequently, the severe and fatal cases would likely visit the hospital and thus be counted as
354 numerators in our estimation. Thus, our estimation did not overlook the worst-case scenario, that
355 is, our estimation, for example, estimated the higher CFR rather than the lower possible
356 estimates.

357

358 **Conclusions:**

359 Between the first (2000-2010) and the second decade (2011-2022), DENV infection have
360 increased by 8.3 times, and annual deaths have doubled in Bangladesh. This growth of DENV
361 infection is partly explained by the influence of global warming with an increase of 0.49°C
362 annual temperature as well as changes in duration and length of the rainy season. Unusual rain
363 including early or late rain in and beyond the monsoon season likely contributed to extending the
364 length of the dengue transmission season in Bangladesh. The monthly mean temperature, and
365 monthly total rainfall of the first-and -second lagged months showed a greater influence on the
366 monthly incidence of DENV infection in Bangladesh. The mean monthly growth factor remains
367 significantly above one during April-July, which coincides with the hot and rainy season of the
368 country indicating an earlier vector control would benefit the country. The ARIMA model
369 forecasts a continuously increasing trend of DENV infection for the next decade in Bangladesh.
370 We recommend an integrated and holistic vector management plan while engaging the local
371 communities in the regular destruction of mosquito breeding sites and increasing surveillance for
372 detecting active DENV-infected cases. Proactive surveillance, vector control, and vaccine rollout
373 remain essential public health interventions. In the context of climate change, urbanization, trade,
374 and the movement of people with vectors, there is a need to operationalize the One Health
375 approach to address dengue fever and other vector-borne diseases in Bangladesh and beyond.

376

377

378 **Acknowledgments:**

379

380 We are grateful to the Ministry of Health and Family Welfare of Bangladesh for publicly sharing
381 the dengue cases data. We acknowledge Bangladesh Meteorological Department for sharing the
382 meteorological data. NH, and AZ, are part of the PANDORA-ID-NET Consortium (EDCTP 373
383 Reg/Grant RIA2016E-1609) funded by the European and Developing Countries Clinical Trials
384 Partnership (EDCTP2) programme. NH is a member of the International Development Research
385 Centre, Canada's grant on West African One Health Actions for understanding, preventing, and
386 mitigating outbreaks (109810-001). AZ is a National Institutes of Health Research senior
387 investigator, and a Mahathir Science Award and Pascoal Mocumbi Award laureate.

388

389

390 **Author contribution statement:** NH ideated the study and all authors helped develop the study outline and
391 protocol. MNH and IK collected the data. NH, MNH, MA and AZ analyzed the data. NH, IK and MNH
392 prepared the first draft manuscript and all authors contributed to several drafts and finalization of the
393 manuscript. All authors approved the final draft and submission of the manuscript.

394

395 **Financial Support:** There was no funding for this research.

396 **Conflict of interest:** The authors declare that they have no conflict of interest.

397 **Ethics statement:** This study does not include any individual-level data and thus does not require any
398 ethical approval. We used publicly available data on Dengue cases and deaths.

399 **Data availability statement:** All the dengue data presented in this manuscript are publicly available on
400 Bangladesh's Ministry of Health and Family Welfare's Directorate General of Health Services website
401 (<https://dghs.gov.bd/>). The meteorological data were purchased from Bangladesh Meteorological
402 Department and are restricted to use for research purposes only and anyone interested in these data can
403 request Bangladesh Meteorological Department (<https://live3.bmd.gov.bd/>).

404

405 **References**

- 406 1 WHO. DENGUE: GUIDELINES FOR DIAGNOSIS, TREATMENT, PREVENTION AND CONTROL. Geneva,
407 Switzerland, 2009.
- 408 2 CDC. Transmission through mosquito bites. 2019.
409 <https://www.cdc.gov/dengue/transmission/index.html> (accessed May 15, 2023).
- 410 3 WHO. Dengue and severe dengue. [https://www.who.int/news-room/fact-sheets/detail/dengue-](https://www.who.int/news-room/fact-sheets/detail/dengue-and-severe-dengue)
411 [and-severe-dengue](https://www.who.int/news-room/fact-sheets/detail/dengue-and-severe-dengue). WHO. 2023; : 1–3.
- 412 4 WHO. Dengue and severe dengue. 2023. [https://www.who.int/news-room/fact-](https://www.who.int/news-room/fact-sheets/detail/dengue-and-severe-dengue)
413 [sheets/detail/dengue-and-severe-dengue](https://www.who.int/news-room/fact-sheets/detail/dengue-and-severe-dengue) (accessed May 15, 2023).
- 414 5 Murray NEA, Quam MB, Wilder-Smith A. Epidemiology of dengue: past, present and future
415 prospects. *Clin Epidemiol* 2013; **5**: 299–309.
- 416 6 WHO-Bangladesh. Dengue - Bangladesh. [https://www.who.int/emergencies/disease-outbreak-](https://www.who.int/emergencies/disease-outbreak-news/item/2022-DON424)
417 [news/item/2022-DON424](https://www.who.int/emergencies/disease-outbreak-news/item/2022-DON424). 2022; published online Nov 28.
- 418 7 Teo A, Tan HD, Loy T, Chia PY, Chua CLL. Understanding antibody-dependent enhancement in
419 dengue: Are afucosylated IgG1s a concern? *PLoS Pathog* 2023; **19**: e1011223.
- 420 8 WHO South-East Asia. Dengue in the South-East Asia. WHO Regional office for South-East Asia.
421 2023; : 1–6.
- 422 9 Sharmin S, Viennet E, Glass K, Harley D. The emergence of dengue in Bangladesh: epidemiology,
423 challenges and future disease risk. *Trans R Soc Trop Med Hyg* 2015; **109**: 619–27.
- 424 10 Mutsuddy P, Tahmina Jhora S, Shamsuzzaman AKM, Kaiser SMG, Khan MNA, Dhiman S. Dengue
425 Situation in Bangladesh: An Epidemiological Shift in terms of Morbidity and Mortality. *Can J Infect*
426 *Dis Med Microbiol* 2019; **2019**. DOI:10.1155/2019/3516284.
- 427 11 DGHS. DGHS. 2023. [https://old.dghs.gov.bd/index.php/bd/home/5200-daily-dengue-status-](https://old.dghs.gov.bd/index.php/bd/home/5200-daily-dengue-status-report)
428 [report](https://old.dghs.gov.bd/index.php/bd/home/5200-daily-dengue-status-report) (accessed May 15, 2023).
- 429 12 Ahsan A, Haider N, Kock R, Benfield C. Possible Drivers of the 2019 Dengue Outbreak in
430 Bangladesh: The Need for a Robust Community-Level Surveillance System. *J Med Entomol* 2021;
431 **58**: 37–9.
- 432 13 BMD. Climate and Weather Data Portal | Bangladesh Meteorological Department. 2023.
433 <http://www.bmddataportal.com/#/> (accessed May 15, 2023).
- 434 14 Haider N, Chang Y-M, Rahman M, Zumla A, Kock RA. Dengue outbreaks in Bangladesh: Historic
435 epidemic patterns suggest earlier mosquito control intervention in the transmission season could
436 reduce the monthly growth factor and extent of epidemics. *Current Research in Parasitology &*
437 *Vector-Borne Diseases* 2021; **1**: 100063.

- 438 15 Kumar N, Susan S. COVID-19 Pandemic Prediction using Time Series Forecasting Models. In: 2020
439 11th International Conference on Computing, Communication and Networking Technologies
440 (ICCCNT). IEEE, 2020: 1–7.
- 441 16 Hasan MN, Haider N, Stigler FL, *et al.* The Global Case-Fatality Rate of COVID-19 Has Been
442 Declining Since May 2020. *Am J Trop Med Hyg* 2021; **104**: 2176–84.
- 443 17 Yue S, Pilon P. A comparison of the power of the t test, Mann-Kendall and bootstrap tests for
444 trend detection / Une comparaison de la puissance des tests t de Student, de Mann-Kendall et du
445 bootstrap pour la détection de tendance. *Hydrological Sciences Journal* 2004; **49**: 21–37.
- 446 18 Sen PK. Estimates of the Regression Coefficient Based on Kendall's Tau. *J Am Stat Assoc* 1968; **63**:
447 1379–89.
- 448 19 Sumi SN, Sinha NC, Islam MA. Generalized linear models for analyzing count data of rainfall
449 occurrences. *SN Appl Sci* 2021; **3**: 481.
- 450 20 R Core Team. R: A language and environment for statistical computing. Vienna, Austria. URL
451 <https://www.R-project.org/>. 2022.
- 452 21 Haider N, Rahman MS, Khan SU, *et al.* Identification and Epidemiology of a Rare HoBi-Like
453 Pestivirus Strain in Bangladesh. *Transbound Emerg Dis* 2014; **61**: 193–8.
- 454 22 Focks DA, Daniels E, Haile DG, Keesling JE. A simulation model of the epidemiology of urban
455 dengue fever: Literature analysis, model development, preliminary validation, and samples of
456 simulation results. *American Journal of Tropical Medicine and Hygiene* 1995.
457 DOI:10.4269/ajtmh.1995.53.489.
- 458 23 Soneja S, Tsarouchi G, Lumbroso D, Tung DK. A Review of Dengue's Historical and Future Health
459 Risk from a Changing Climate. *Curr Environ Health Rep* 2021; **8**: 245–65.
- 460 24 Salje H, Morales I, Gurley ES, Saha S. Seasonal Distribution and Climatic Correlates of Dengue
461 Disease in Dhaka, Bangladesh. *Am J Trop Med Hyg* 2016; **94**: 1359–61.
- 462 25 Rahman KM, Sharker Y, Rumi RA, *et al.* An Association between Rainy Days with Clinical Dengue
463 Fever in Dhaka, Bangladesh: Findings from a Hospital Based Study. *Int J Environ Res Public Health*
464 2020; **17**: 9506.
- 465 26 Cuong HQ, Hien NT, Duong TN, *et al.* Quantifying the Emergence of Dengue in Hanoi, Vietnam:
466 1998–2009. *PLoS Negl Trop Dis* 2011; **5**: e1322.
- 467 27 Wangdi K, Clements ACA, Du T, Nery SV. Spatial and temporal patterns of dengue infections in
468 Timor-Leste, 2005–2013. *Parasit Vectors* 2018; **11**: 9.
- 469 28 Siraj AS, Oidtmann RJ, Huber JH, *et al.* Temperature modulates dengue virus epidemic growth
470 rates through its effects on reproduction numbers and generation intervals. *PLoS Negl Trop Dis*
471 2017. DOI:10.1371/journal.pntd.0005797.
- 472 29 Haider N, Hasan MN, Khalil I, *et al.* The 2022 dengue outbreak in Bangladesh: hypotheses for the
473 late resurgence of cases and fatalities. *J Med Entomol* 2023; published online May 18.
474 DOI:10.1093/jme/tjad057.

- 475 30 European CDC. Dengue worldwide overview. ECDC. 2023; : 1–10.
- 476 31 Huits R, Schwartz E. Fatal outcomes of imported dengue fever in adult travelers from non-
477 endemic areas are associated with primary infections. *J Travel Med* 2021; **28**.
478 DOI:10.1093/jtm/taab020.
- 479 32 Liu Y, Lillepold K, Semenza JC, Tozan Y, Quam MBM, Rocklöv J. Reviewing estimates of the basic
480 reproduction number for dengue, Zika and chikungunya across global climate zones. *Environ Res*.
481 2020. DOI:10.1016/j.envres.2020.109114.
- 482 33 Diseases Control Division (DGHS). National guidelines for clinical management of Dengue
483 syndrome. Dhaka, 2013.
- 484 34 WHO. Improving the quality of care in the public health system in Bangladesh: building on new
485 evidence and current policy levers: Bangladesh Health Systems in Transition, Policy Notes. Dhaka
486 , 2017.
- 487 35 Albis MLF, Bhadra SK, Chin B. Impact evaluation of contracting primary health care services in
488 urban Bangladesh. *BMC Health Serv Res* 2019; **19**: 854.
- 489 36 Salje H, Paul KK, Paul R, *et al*. Nationally-representative serostudy of dengue in Bangladesh allows
490 generalizable disease burden estimates. *Elife* 2019; **8**. DOI:10.7554/ELIFE.42869.
- 491 37 Al-Amin HM, Johora FT, Irish SR, *et al*. Insecticide resistance status of *Aedes aegypti* in
492 Bangladesh. *Parasit Vectors* 2020; **13**: 622.
- 493 38 Wang TT, Sewatanon J, Memoli MJ, *et al*. IgG antibodies to dengue enhanced for FcγRIIIA binding
494 determine disease severity. *Science (1979)* 2017; **355**: 395–8.
- 495 39 Salje H, Paul KK, Paul R, *et al*. Nationally-representative serostudy of dengue in Bangladesh allows
496 generalizable disease burden estimates. *Elife* 2019; **8**. DOI:10.7554/eLife.42869.
- 497
- 498
- 499

500 **Tables:**

501 **Table 1: Comparison of dengue cases, deaths, and weather parameters between the first**
 502 **(2000-20210) and the recent decade (2011-2022) in Bangladesh**

	First decade (2000-2010)	Recent decade (2011-2022)	p-value
Mean annual dengue cases (\pm Standard deviation [SD])	2216.64 (\pm 2123.62)	18321.92 (\pm 31,778.90)	0.219
Mean annual dengue deaths (\pm SD)	21.18 (\pm 30.69)	46.58 (\pm 90.90)	0.853
Mean Case-fatality ratio (\pm SD)	0.69 (\pm 0.79)	0.23 (\pm 13)	0.08
Mean temperature $^{\circ}$ C (\pm SD)	26.35 (\pm 0.49)	26.84 (\pm 0.37)	<0.001
Mean annual rainfall (\pm SD)	2078.66 (\pm 459.68) [mm]	1764.50 (\pm 448.32) [mm]	0.188

503

504 **Table 2: The Mann-Kendell trend test of dengue cases in Bangladesh**

Test		
<i>Mann-Kendell trend analysis</i>	Tau	p-value
	0.26	0.139
<i>Sen's Slop test</i>		
	Sen's Slope	95% Confidence Interval
	171.67	-46 to 687

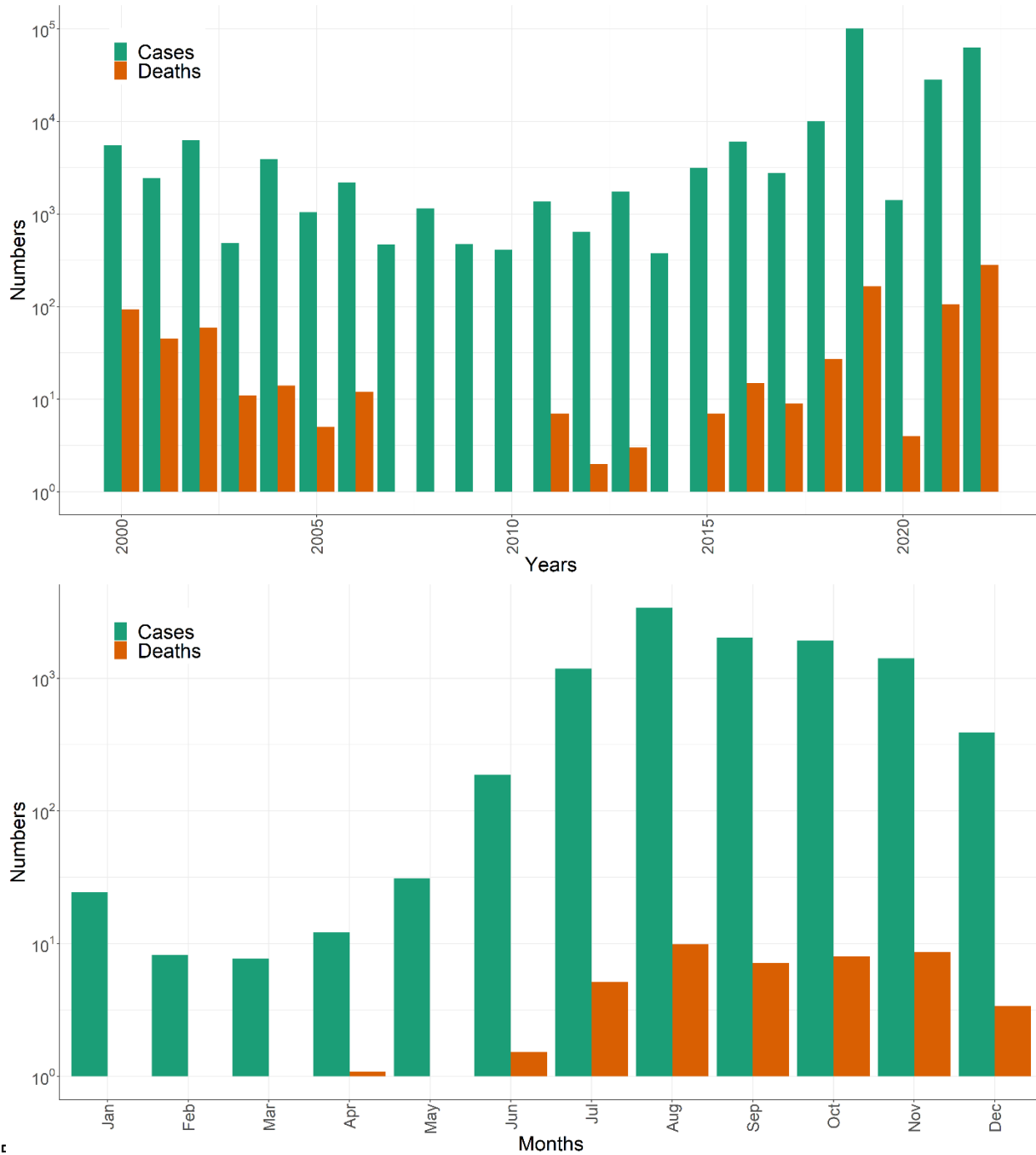
505

506 **Table 3: The incidence risk ratio (IRR) of average temperature and rainfall to Dengue**
 507 **cases in Bangladesh using time-series count Generalized Linear Model.**

508

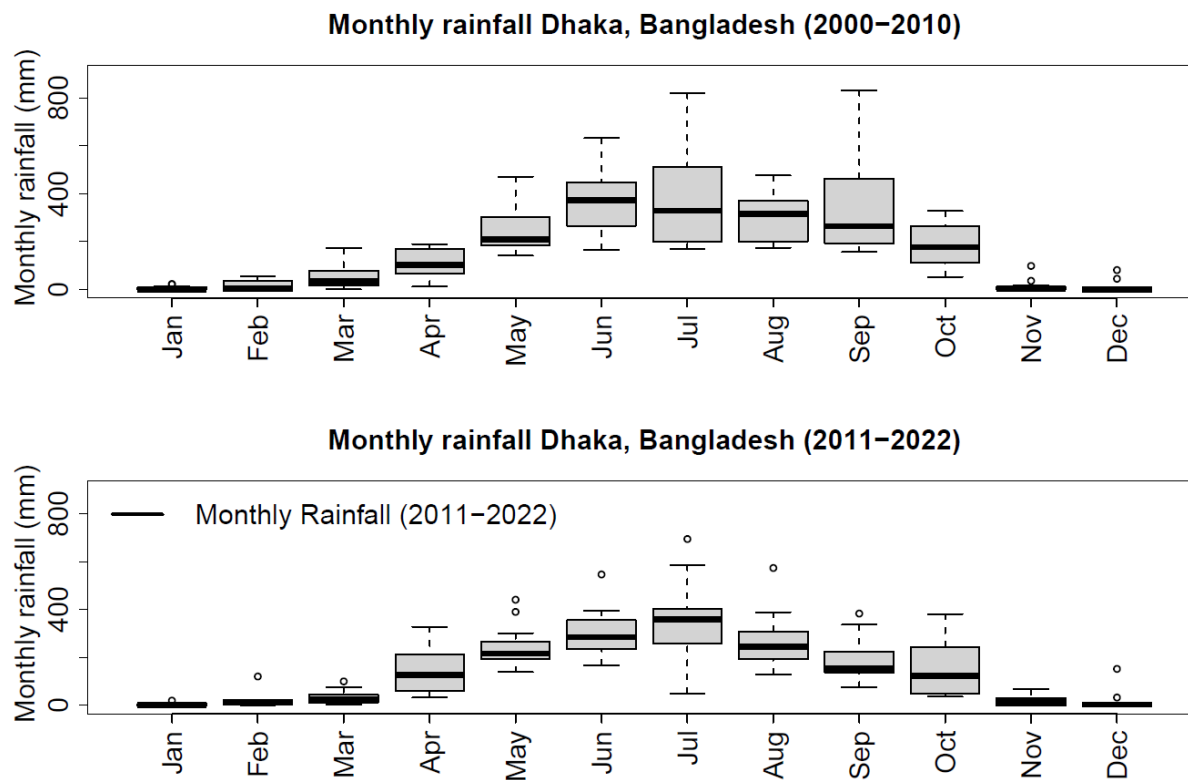
	IRR (95% CI)	P-value
Average temperature	1.26 (1.258 – 1.265)	<0.001
Rainfall (lag 1) in centimeter	1.08 (1.079 – 1.086)	<0.001
Rainfall (lag 2) in centimeter	1.17 (1.168 – 1.175))	<0.001

509 **Fig 1:** Top: Number of dengue cases and deaths over the period 2000-2022, Bangladesh.
 510 Bottom: Number of monthly dengue cases and deaths recorded in Bangladesh.



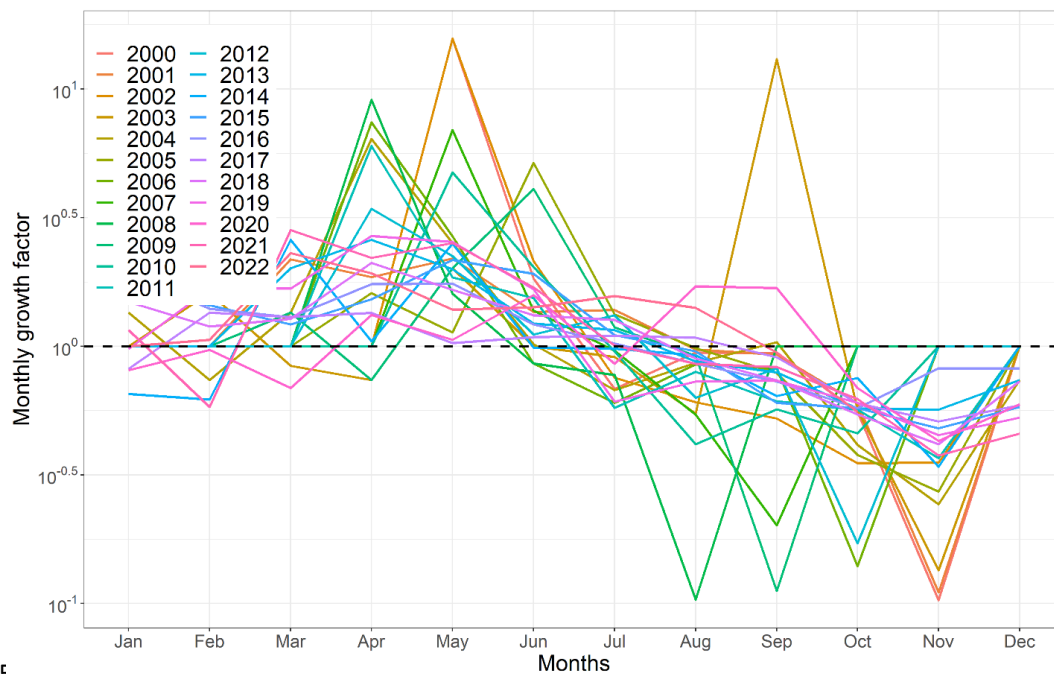
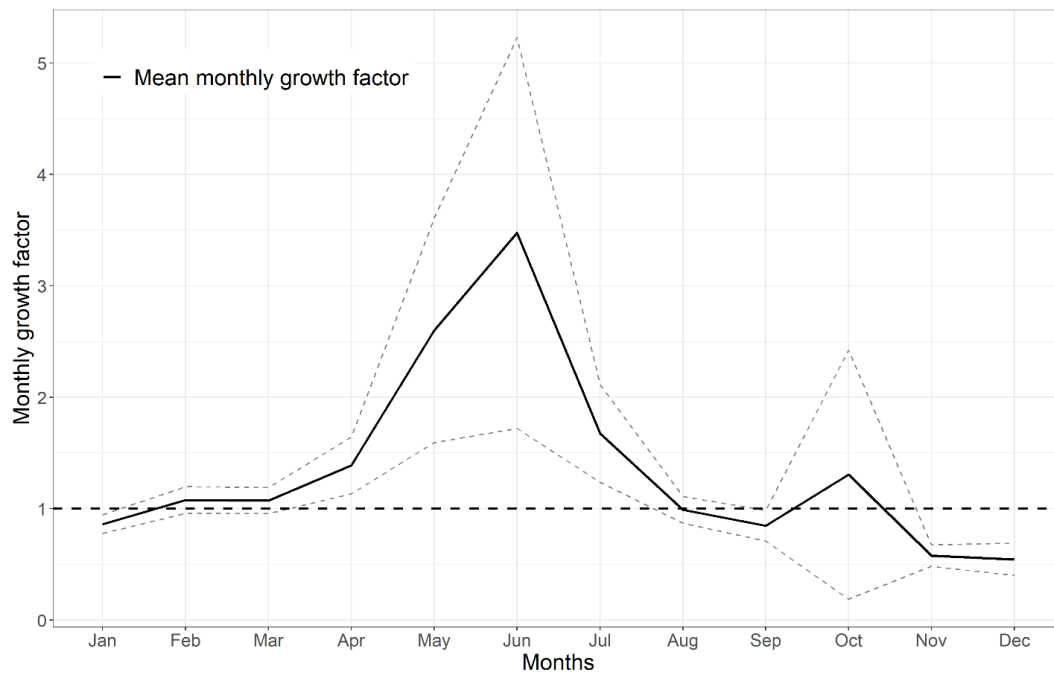
512
 513
 514

515 **Fig 2:** The boxplot compares monthly rainfall in Dhaka city, Bangladesh between two decades.
516 The bottom and top of the box indicate the first and third quartiles, the band inside the box is the
517 median. The dots outside the box are individual outliers. Most of the months in the second
518 decade had outlier rainfall whereas in the first decade, only the cooler months (Nov-Jan) had
519 some extreme rainfall.
520



522
523
524
525
526
527
528
529

530 **Fig 3: Top:** Mean monthly growth factor for the period of 2000-2022. Bottom: The Monthly
531 growth factor for the individual year 2000-2022. The dotted horizontal line indicates monthly
532 growth factor 1 (same number of cases in two subsequent months).

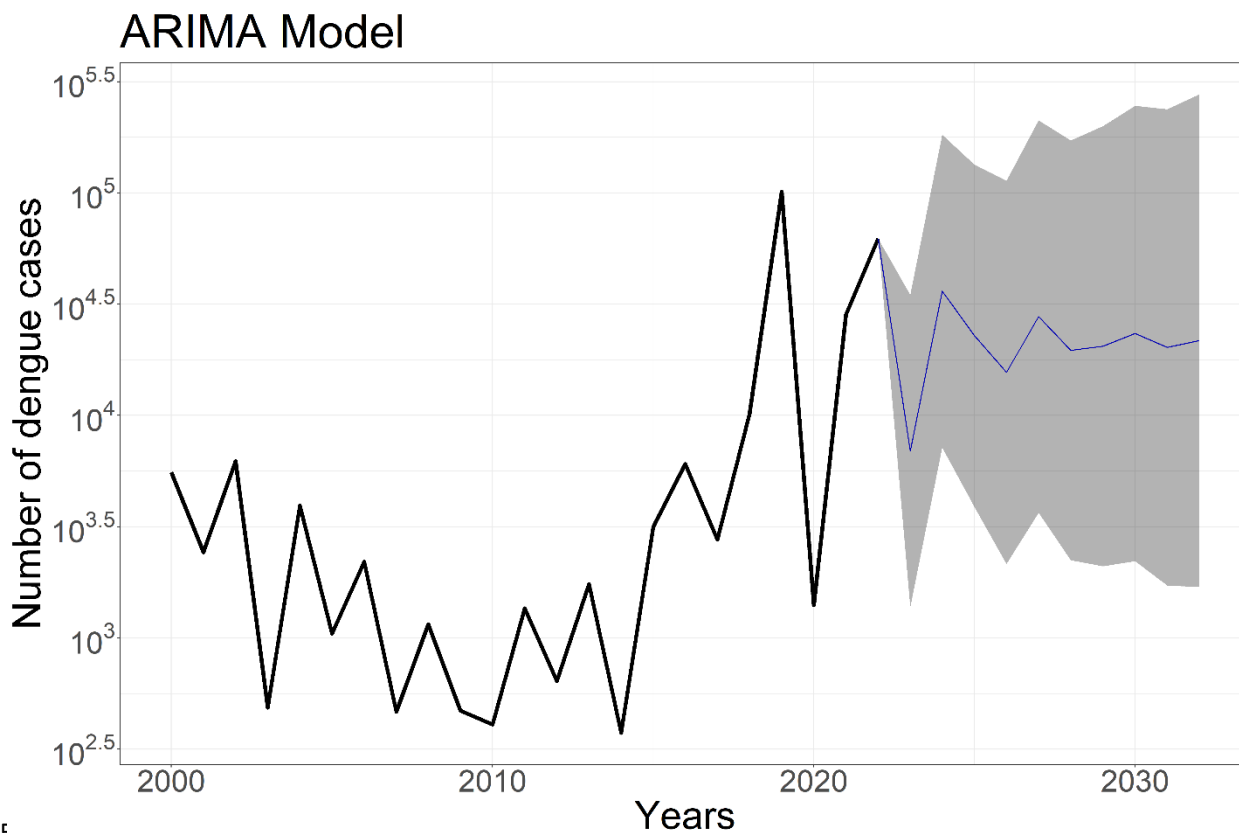


533

534

535

536 **Fig 4: Fig 3: Top:** Mean monthly growth factor for the period of 2000-2022. Bottom: The
537 Monthly growth factor for the individual year 2000-2022. The dotted horizontal line indicates
538 monthly growth factor 1 (same number of cases in two subsequent months).
539



540
541