

## Computed Tomography-Based Analysis of Foramen Magnum and Occipital Condyles in adult Nigerians: An Anatomical Study

<b>Fatima Muhammad</b> <sup>1</sup> ORCID: <a href="https://orcid.org/0009-0001-0182-4541">https://orcid.org/0009-0001-0182-4541</a> <sup>1</sup> Department of Anatomy, Faculty of Basic Medical Science, Bauchi State University, Gadau, Bauchi, PMB 65, Nigeria. e-mail: <a href="mailto:muhhammadbint41@gmail.com">muhhammadbint41@gmail.com</a>
<b>Umar Ahmad</b> <sup>1,2*</sup> ORCID: <a href="https://orcid.org/0000-0002-3216-5171">https://orcid.org/0000-0002-3216-5171</a> <sup>1</sup> Molecular Genetics Informatics, Department of Anatomy, Faculty of Basic Medical Science, Bauchi State University, Gadau, Bauchi, PMB 65, Nigeria. <sup>2</sup> Institute of Pathogen Genomics, Centre for Laboratory and Systems Networks, Africa Centres for Disease Control and Prevention (Africa CDC), African Union Commission, P.O.Box 3243, Addis Ababa, Ethiopia. e-mail: <a href="mailto:umarahmad@basug.edu.ng">umarahmad@basug.edu.ng</a>
<b>Tawfiq Yousef Tawfiq ZYUOD</b> <sup>3</sup> ORCID: <a href="https://orcid.org/0000-0001-7380-3582">https://orcid.org/0000-0001-7380-3582</a> <sup>3</sup> Department of Imaging, Faculty of Medicine and Health Sciences, Universiti Putra Malaysia, Serdang, Selangor, 43400, Malaysia. e-mail: <a href="mailto:tawfiq_1994@yahoo.com">tawfiq_1994@yahoo.com</a>
<b>Murtala Muhammad Jibril</b> <sup>1</sup> ORCID: <a href="https://orcid.org/0000-0002-6170-3194">https://orcid.org/0000-0002-6170-3194</a> <sup>1</sup> Department of Anatomy, Faculty of Basic Medical Science, Bauchi State University, Gadau, Bauchi, PMB 65, Nigeria. e-mail: <a href="mailto:mmjibril@basug.edu.ng">mmjibril@basug.edu.ng</a>
<b>Suleiman Hamidu Kwairanga</b> <sup>4</sup> ORCID: <a href="https://orcid.org/0000-0003-4276-2743">https://orcid.org/0000-0003-4276-2743</a> <sup>4</sup> Department of Human Anatomy, Faculty of Basic and Allied Medical Sciences, College of Medical Sciences, Gombe State University, Gombe, Nigeria. e-mail: <a href="mailto:hamidusuleiman@gsu.edu.ng">hamidusuleiman@gsu.edu.ng</a>

## Abstract

**Background:** Precise identification of craniometric points is pivotal in forensic and anthropological research for reliable and accurate gender determination. The foramen magnum and occipital condyles' morphology offers valuable data for this purpose. **Aim:** The study aimed to determine variations in the morphology of the foramen magnum and occipital condyles among a population of 100 individuals, using advanced Computed Tomography (CT) scan technology. **Methods:** We assessed a prospective cohort of 100 individuals who underwent cranial CT scans. The study focused on the morphological variations of the foramen magnum and occipital condyles, recording shapes such as oval, round, egg, tetragon, pentagon, hexagon, and irregular for the foramen magnum, and kidney-type, oval, S-like, 8-like, ring-like, and triangular for the occipital condyles. **Results:** Notably, males demonstrated higher measurement values for most parameters, with the exception of the width of the occipital condyle, where females presented larger dimensions. Furthermore, a strong positive correlation was observed between the measurements of the foramen magnum (length and width) and specific parameters of the occipital condyles. **Conclusions:** The study underscores the utility of foramen magnum dimensions, especially length, as a determinant in gender identification, with a success rate of 68% in the studied population. This research enhances our understanding of cranial morphology and its applications in forensic and anthropological investigations.

**Keywords:** Skull, Foramen Magnum, Occipital Condyles, Computed Tomography, Morphological Variations

## Introduction

Foramen magnum (FM) is the largest foramen of the skull located in an anteromedian position which consequently leads into the posterior cranial fossa. It has the largest diameter termed as anteroposterior diameter; it is usually oval in shape with a broad base. It comprises the distal end of the medulla oblongata, meninges, vertebral arteries, and the spinal accessory nerve (Standring *et al.*, 2008; Gautam *et al.*, 2012; Muralidhar *et al.*, 2014; Babu, 2016). The foramen magnum shapes differs. The shape variations is of great importance as it has effect on the vital structures that passes through it due to the role it plays in different surgical approaches. Dimensions of the foramen magnum also have clinical importance because the vital structures that pass through it may suffer compression; therefore, the cranial base is such a difficult structure that is only studied morphometrically (Murshed *et al.*, 2003; Suazo *et al.*, 2009; Kumar, 2015; Babu, 2016).

In conditions of natural or man-made disasters where direct identification of victims is difficult, there is a need for an accurate, timely and simple method for gender determination (Teixeira *et al.*, 1982; Vinutha *et al.*, 2018; TY *et al.*, 2020). The anatomical characteristics of the foramen magnum and occipital condyle also differ in race, regions within the same race and may also varied in periods of evolution. Moreover, the anatomical characteristics of the FM and occipital condyle have been found to vary across races, regions, and even evolutionary periods, thus reflecting the complexity and diversity of these structures (Catalina, 1987; Murshed *et al.*, 2003; Singh *et al.*, 2017).

Despite the potential importance of these variations, data is limited concerning the morphological characterization of the FM and occipital condyle among specific ethnic groups, such as those residing in the Bauchi metropolis. FM assessments bear significant

implications not only for tailoring suitable surgical procedures but also for forensic medicine, where they contribute to identifying unknown gender and potentially ascertaining past trauma or causes of death (Erdil, *et al.*, 2010; Fatma *et al.*, 2010; Edward *et al.*, 2013; Salih *et al.*, 2015; El- Barrany *et al.*, 2016) .

Thus, this study aims to analyse the FM and occipital condyles measurements as potential indicators for skull gender identification, with a focus on the Nigerian population of the Bauchi metropolis. This research not only addresses the paucity of data on this topic, but it also endeavours to provide valuable insights to clinicians, researchers, and forensic scientists, ultimately enhancing our understanding of these critical anatomical landmarks.

## **Materials and Methods**

### **Ethical clearance**

Ethical clearance for this prospective study was granted by two authoritative bodies: the Bauchi State University Ethics Committee (BASUG/FBMS/REC/VOL. 2/005) and the Bauchi State Specialist Hospital's Research and Ethical Committee (NREC/0/11/19B/2021/23). Data were accordingly collected from the Radiology Department of the Specialist Hospital in Bauchi, Nigeria, adhering to all ethical guidelines and practices mandated by these committees.

### **Selection criteria**

### **Inclusion criteria**

The study included individuals who met the following criteria:

1. Possession of cranial Computed Tomography (CT) scans.
2. No recorded history of cranial trauma.
3. Presentation of an intact foramen magnum and occipital condyles in the CT scans.
4. Clear visibility of the bony margins of the foramen magnum and occipital condyles in the CT scans.

### **Exclusion criteria**

The study excluded individuals based on the following criteria:

1. Presence of a disrupted or damaged foramen magnum and occipital condyles in cranial Computed Tomography (CT) scans.
2. Evidence of diseases leading to cranial deformities.
3. History of accidents, surgery, or pathologies involving the foramen magnum region.
4. Any disorder potentially impacting the normal anatomy of the skull base.

Only individuals in good health, having completed skeletal growth in adulthood, were considered for inclusion in the study.

### **Sampling frame**

The study's sampling frame consisted of Computed Tomography (CT) scan samples procured from the Radiology Department of the Specialist Hospital in Bauchi, Nigeria. The acquisition of these samples was facilitated by obtaining written permission from the relevant authorities before the commencement of the data collection process.

## Sample size and study subjects

This prospective study utilized cranial Computed Tomography (CT) scans from a random selection of individuals aged between 21 and 65 years, retrieved from the Radiology Department of Specialist Hospital Bauchi. Sample size was determined based on the formula by Lwanga and Lemeshaw (1991), yielding a requirement of 139 CT scans for this study. However, only 100 CT scans were available from the hospital database, consisting of 71 males and 29 females. Despite falling short of the calculated ideal, these 100 scans were deemed sufficient and were thus used for the assessment in this study. Sample size was calculated using the standard formula as follows:-

$$n = \frac{z^2 \cdot 1 - \frac{\alpha}{2} p(1-p)}{d^2} \quad (\text{Lwanga and Lemeshaw 1991})$$

Where;

n = minimum sample size

z = standard normal deviation, which is 1.96 at 95% confidence level

p = proportion in the target population, given as 10%

d = sampling error, given as 0.05

By substituting these values into the formula, we get:-

$$n = (1.96)^2 \times \frac{0.1(1-0.1)}{(0.05)^2}$$

$$n = 3.8416 \times 0.1 \times \frac{0.9}{0.0025}$$

$$n = 138.17856$$

Therefore, the minimum sample size needed for the study, when rounded up is 139.

## **Data collection and image processing**

Socio-demographic data including age and gender were meticulously gathered for each subject. The measurements of the foramen magnum and occipital condyles were then recorded by a qualified radiographer, ensuring data accuracy. These measurements were obtained from high-resolution, multi-slice cranial CT scans. A total of 100 scans were analyzed, providing ten distinct dimensions of the foramen magnum and occipital condyles for evaluation. For data analysis and visualization, the Digital Imaging and Communications in Medicine (DICOM) images were transferred to a CD plate and subsequently reviewed using a dedicated image viewer.

## **Cranial Computed Tomography (CT) imaging protocol**

All subjects underwent assessment using a multi-slice NeuViz 16 scanner (Neusoft, N16E130043). During the scanning procedure, subjects were positioned supine to ensure optimal image quality. The images obtained were visually examined to note variations in the shapes of the foramen magnum and occipital condyles. Precise measurements were captured using the same NeuViz 16 multi-slice CT scanner, with a set scanning parameter of 120 kilovolt peak (kVp) and 40 milliamperes-seconds (mAs).

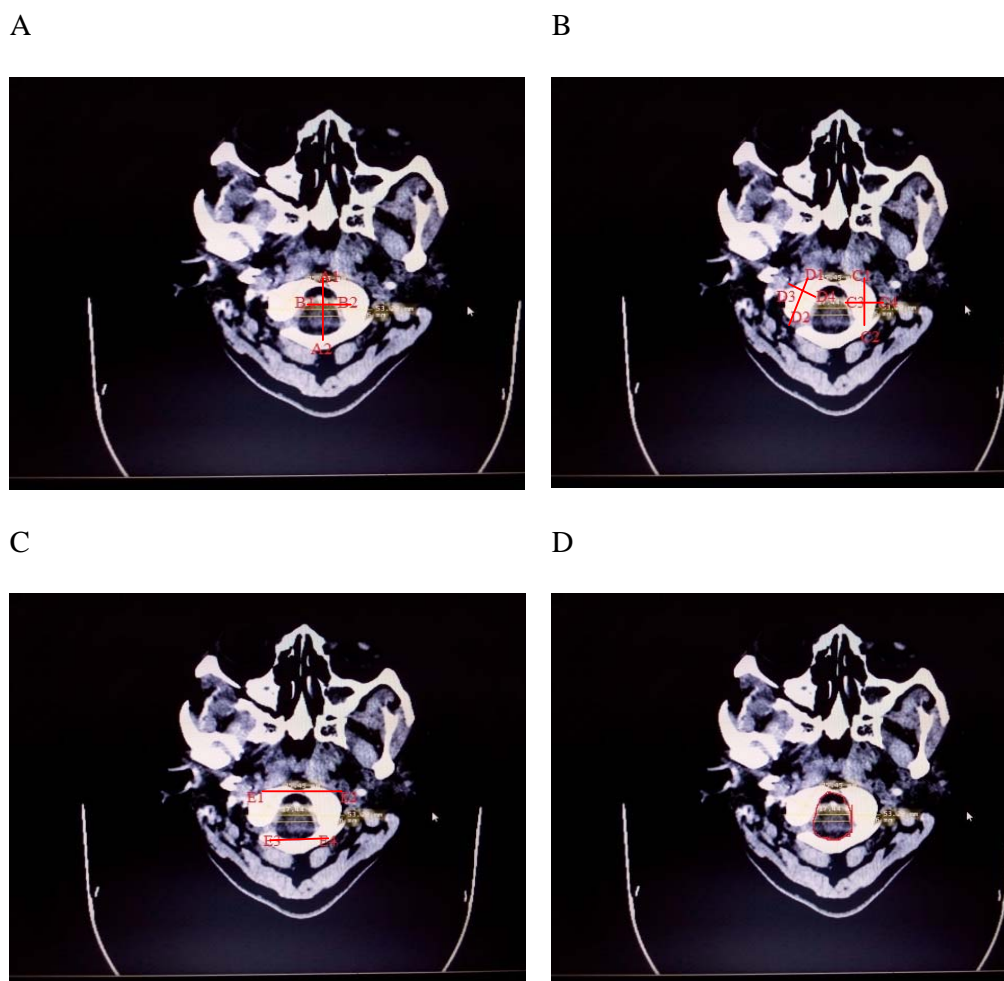
## **Foramen magnum and occipital condyles measurements**

The foramen magnum length was defined as the greatest internal length along the mid-sagittal plane (Figure 2A, A1-A2). Correspondingly, the foramen magnum width was determined as the widest internal measurement along the transverse plane (Figure 2A, B1-B2). The area of the foramen magnum was calculated using Radinsky's formula:  $\frac{1}{4} \times \pi \times \text{Width} \times \text{Length}$ , while the circumference was estimated by tracing along the bony border of the foramen magnum (Figure 2D).

Moreover, the right occipital condyle's length was ascertained as the longest measurement along the articular surface, perpendicular to its width (Figure 2B, D1-D2). Its width was measured along the articular surface, perpendicular to the length (Figure 2B, D3-D4). For the left occipital condyle, the length was captured as the greatest measurement along the articular surface, perpendicular to the width (Figure 2B, C1-C2). Meanwhile, the width was quantified along the articular surface, perpendicular to the length (Figure 2B, C3-C4).

Additionally, the minimum intercondylar distance, or the shortest distance between the medial edges of the articular surfaces of the occipital condyles perpendicular to the mid-sagittal plane, was recorded (Figure 2C, E3-E4). The maximum intercondylar distance, which was defined as the longest distance between the medial margins of the occipital condyles perpendicular to the mid-sagittal plane, was also measured (Figure 2C, E1-E2).





**Figure 1: Illustration of the measured parameters on computed tomographic images.** (A) Foramen magnum length (A1-A2) and width (B1-B2). (B) Left occipital condyle length (C1-C2) and width (C3-C4), and right occipital condyle length (D1-D2) and width (D3-D4). (C) Maximum (E1-E2) and minimum (E3-E4) intercondylar distances. (D) Depicts the area and circumference of the foramen magnum.

### **Image analysis and statistical approach**

Images generated were meticulously analysed employing DICOM image viewer software.

All statistical computations were conducted utilizing the Statistical Package for Social Sciences (SPSS) version 21. An initial normality test was performed on the morphometric measurements for the Foramen Magnum (FM) and Occipital Condyle (OC) parameters.

Differences between genders were assessed using the Mann-Whitney U test. The Chi-square test was employed to evaluate the association between the shapes of the studied variables and

distinct ethnic groups. Discriminant function analysis was utilized to predict gender and ascertain the accuracy of gender identification. A Spearman correlation was used to evaluate the relationship between parameters such as the Length of the Foramen Magnum (LFM), Width of the Foramen Magnum (WFM), Length of the Right Condyle (LRC), Length of the Left Condyle (LLC), Width of the Right Condyle (WRC), Width of the Left Condyle (WLC), Maximum Intercondylar distance (MIC), and Minimum Intercondylar distance (MnIC). Demographic data of the subjects were described using mean and standard deviation. A p-value of less than 0.05 was considered to indicate statistical significance.

## **Results**

### **Demographic and morphometric characteristics of study subjects**

Table 1 summarizes the sociodemographic profiles and the morphometric dimensions of the foramen magnum (FM) and occipital condyle (OC) among patients at the Bauchi State Specialist Hospital, Bauchi, Nigeria. The study sample comprised of a significantly larger proportion of males (70%) compared to females (30%). The mean age for males was  $40.00 \pm 11.53$  years, while for females it was  $33.78 \pm 9.79$  years, within an age range of 21 to 65 years.

The average measurements for FM and OC dimensions differed between genders across all variables. Specifically, for males, the mean length of the foramen magnum (LFM) was  $26.33 \pm 6.51$  mm, width of the foramen magnum (WFM) was  $21.05 \pm 5.77$  mm, area of the foramen magnum (AFM) was  $427.34 \pm 208.85$  mm, circumference of the foramen magnum (CFM) was  $68.22 \pm 14.44$  mm, length of the right condyle (LRC) was  $16.77 \pm 8.83$  mm, width of the right condyle (WRC) was  $7.76 \pm 3.03$  mm, length of the left condyle (LLC) was  $18.28 \pm 5.42$  mm, width of the left condyle (WLC) was  $8.57 \pm 3.45$  mm, maximum

intercondylar distance (MIC) was  $44.89 \pm 7.30$  mm, and the minimum intercondylar distance (MnIC) was  $22.70 \pm 4.89$  mm.

For females, the mean LFM was  $21.58 \pm 4.61$  mm, WFM was  $18.31 \pm 4.36$  mm, AFM was  $311.65 \pm 124.58$  mm, CFM was  $61.54 \pm 10.35$  mm, LRC was  $14.78 \pm 5.07$  mm, WRC was  $7.98 \pm 3.43$  mm, LLC was  $16.95 \pm 4.77$  mm, WLC was  $8.57 \pm 3.57$  mm, MIC was  $40.79 \pm 6.03$  mm, and MnIC was  $21.34 \pm 5.22$  mm. These findings provide a comprehensive overview of the FM and OC dimensions among the male and female patients in this study group. The standard deviations, minimum and maximum values for each dimension are presented for both genders in Table 1.

**Table 1: Descriptive statistics of demographic data and morphometric dimensions of foramen magnum and occipital condyle stratified by gender (n= 100)**

Variable	Gender	Mean $\pm$ SD	Min	Max
Age (Years)	Male	$40.00 \pm 11.53$	21	65
	Female	$33.78 \pm 9.79$		
LFM (mm)	Male	$26.33 \pm 6.51$	13.87	46.76
	Female	$21.58 \pm 4.61$	11.68	35.60
WFM (mm)	Male	$21.05 \pm 5.77$	7.80	35.05
	Female	$18.31 \pm 4.36$	11.19	27.29
AFM (mm)	Male	$427.34 \pm 208.85$	84.93	1286.57
	Female	$311.65 \pm 124.58$	168.04	762.65
CFM (mm)	Male	$68.22 \pm 14.44$	34.00	99.79
	Female	$61.54 \pm 10.35$	39.91	85.87
LRC (mm)	Male	$16.77 \pm 8.83$	7.09	74.59
	Female	$14.78 \pm 5.07$	7.55	31.04
WRC (mm)	Male	$7.76 \pm 3.03$	3.31	16.01
	Female	$7.98 \pm 3.43$	3.38	14.86
LLC (mm)	Male	$18.28 \pm 5.42$	7.65	30.16
	Female	$16.95 \pm 4.77$	8.50	28.81

WLC	Male	8.57±3.45	3.57	16.65
(mm)	Female	8.57±3.57	3.72	15.02
MIC	Male	44.89±7.30	28.17	59.74
(mm)	Female	40.79±6.03	32.79	59.90
MnIC	Male	22.70±4.89	11.28	32.90
(mm)	Female	21.34±5.22	13.42	33.35

SD; standard deviation, Min; Minimum, Max; Maximum

### Frequency distribution of foramen magnum (FM) and occipital condyle (OC)

The morphological variations of the foramen magnum (FM) and occipital condyle (OC) shapes are depicted in Tables 2 and 3 respectively. In our cohort, the most prevalent shape of the foramen magnum was found to be oval, constituting 33.3% of the sample. This was followed by round (18.2%), egg (12.1%), tetragonal (10.1%), irregular and pentagonal (each 9.1%), and hexagonal (7.1%) shapes.

For the occipital condyles, the dominant morphological variation was a kidney-like structure, accounting for 39% of the sample. The other shapes observed were the S-like (17%), oval (14%), and 8-like, ring-like, and triangular types (each 10%).

**Table 2: Frequency distribution of foramen magnum morphological variations**

Types	Number	Percentage
Oval	33	33.3
Round	18	18.2
Egg	12	12.1
Tetragonal	10	10.1
Pentagonal	9	9.1

Hexagonal	7	7.1
Irregular	10	10.1
Total	99	100

**Table 3: Frequency distribution of occipital condyles morphological variations**

Types	Number	Percentage
Kidney	39	39
Oval	14	14
8-like	10	10
S-like	17	17
Ring-like	10	10
Triangular	10	10
Total	100	100

### **Variations of foramen magnum and occipital condyles dimensions among gender**

Table 4 present the gender-based variations in foramen magnum and occipital condyle dimensions. The Mann-Whitney U test was employed to assess these differences. A statistically significant disparity was observed in the length of the foramen magnum (LFM), width of the foramen magnum (WFM), area of the foramen magnum (AFM), circumference of the foramen magnum (CFM), and maximum intercondylar distance (MIC), with males demonstrating larger dimensions than females ( $p < 0.05$ ).

In contrast, no significant difference between genders was observed in the length of right/left occipital condyle (LRC, LLC), width of right/left occipital condyle (WRC, WLC), and minimum intercondylar distance (MnIC) ( $p > 0.05$ ).

**Table 4: Gender-based variations of foramen magnum and occipital condyles dimensions**

Variable	Gender	Median	IQR	Z-statistic	P value
LFM	Male	25.0	8.1	-3.912	< 0.001
	Female	21.2	4.8		
WFM	Male	22.1	7.5	-2.799	< 0.020
	Female	18.4	6.9		
AFM	Male	425.9	209.4	-3.566	< 0.001
	Female	296.5	127.4		
CFM	Male	68.2	22.3	-2.461	< 0.020
	Female	61.8	14.1		
LRC	Male	15.0	6.3	-1.166	< 0.260
	Female	14.1	6.4		
WRC	Male	6.8	5.1	-1.10	> 0.930
	Female	7.1	5.7		
LLC	Male	17.4	6.9	-1.033	> 0.340
	Female	17.1	6.7		
WLC	Male	7.3	4.9	-0.668	> 0.510
	Female	7.2	5.0		
MIC	Male	45.2	11.4	-3.080	< 0.010
	Female	39.4			
MnIC	Male	22.9	6.01	-1.664	> 0.140
	Female	20.8	7.4		

### **Ethnic variation in the shapes of the foramen magnum**

Table 5 presents the association of different shapes of the foramen magnum with various ethnic groups. The distribution of foramen magnum shapes across the ethnic groups was

evaluated using the chi-square (X<sup>2</sup>) test. The test produced a chi-square statistic of 44.135 with 54 degrees of freedom (df). The p-value was determined to be 0.829, which is above the commonly used significance level of 0.05, suggesting that the shapes of the foramen magnum do not significantly differ across the ethnic groups investigated in this study.

It can be observed that the oval shape of the foramen magnum is most common among the Fulani ethnic group, while the Hexagonal shape is most common in the Hausa group. The Igbo ethnic group showed a higher frequency of the round shape, while the Sayawa group showed a higher frequency of the Tetragonal shape. However, it's important to note that due to the p-value being above 0.05, these apparent trends do not represent a statistically significant association between ethnicity and the shape of the foramen magnum. Therefore, these observations could have resulted from random variation within the sample population. Further investigation with a larger sample size may be needed to determine whether there are meaningful differences in foramen magnum shape across different ethnic groups.

**Table 5: Association of foramen magnum shapes and ethnicity**

Variable	Shapes of foramen magnum, n (%)							X <sup>2</sup> (df)	P value*
	Oval	Round	Egg	Tetra	Penta	Hexa	Irregular		
Ethnicity								44.135 (54)	0.829
Hausa	6(18.8)	2(11.1)	3(25.0)	1(10.0)	2(22.2)	3(42.9)	1(10.0)		
Fulani	7(21.9)	4(22.2)	3(25.0)	1(10.0)	1(11.1)	1(14.3)	0(0.0)		
Yoruba	5(15.6)	1(5.6)	1(8.3)	1(10.0)	1(11.1)	1(14.3)	2(20.0)		
Igbo	2(6.3)	4(22.2)	0(0.0)	1(10.0)	1(11.1)	1(14.3)	1(10.0)		
Sayawa	1(3.1)	0(0.0)	2(16.7)	3(30.0)	2(22.2)	1(14.3)	0(0.0)		
Jarawa	3(9.4)	1(5.6)	1(8.3)	2(20.0)	0(0.0)	1(14.3)	0(0.0)		

Kanuri	2(3.1)	2(11.1)	1(8.3)	0(0.0)	0(0.0)	0(0.0)	2(20.0)
Kare-kare	2(6.3)	1(5.6)	0(0.0)	0(0.0)	1(11.1)	0(0.0)	0(0.0)
Warjawa	2(6.3)	2(11.1)	1(8.3)	0(0.0)	1(11.1)	0(0.0)	0(0.0)

---

### **Ethnic variation in the shapes of the occipital condyles**

Table 6 investigates the association between different shapes of occipital condyles and various ethnic groups. The distribution of occipital condyle shapes across the ethnic groups was evaluated using the chi-square ( $\chi^2$ ) test, which yielded a statistic of 42.112 with 45 degrees of freedom (df). The resulting p-value was 0.595, exceeding the conventional significance level of 0.05, indicating that the occipital condyle shapes do not significantly differ among the ethnic groups examined in this study.

In the observed data, the kidney shape of the occipital condyles was most frequently seen in the Fulani ethnic group, while the 8-like shape was most common among the Hausa group. The Igbo and Sayawa ethnic groups showed a higher frequency of the S-like shape, whereas the ring-like shape was more frequent in the Yoruba group. The triangular shape was equally distributed among Hausa, Fulani, Yoruba, Igbo, Sayawa, Jarawa, and Warjawa.

However, the above p-value signifies these trends do not denote a statistically significant association between ethnicity and the shape of occipital condyles. As such, these observations could potentially be the product of random variation within the sample population. A more comprehensive investigation with a larger sample size might be required to determine if there are significant differences in occipital condyle shapes across various ethnic groups.



**Table 6: Association of occipital condyles shapes and ethnicity**

Variables	Shapes of occipital condyles, n (%)						X <sup>2</sup> (df)	P value*
	Kidney	Oval	8-like	S-like	Ring-like	Triangular		
Ethnicity							42.112(45)	0.595
Hausa	7(17.9)	2(14.3)	3(30.0)	4(23.5)	1(10.0)	1(11.1)		
Fulani	8(20.5)	4(28.6)	2(20.0)	1(5.9)	0(0.0)	2(22.2)		
Yoruba	6(15.4)	0(0.0)	1(10.0)	1(5.9)	3(30.0)	1(11.1)		
Igbo	3(7.7)	2(14.3)	0(0.0)	3(17.6)	2(20.0)	1(11.1)		
Sayawa	2(5.1)	3(21.4)	1(10.0)	4(23.5)	1(10.0)	1(11.1)		
Jarawa	4(10.3)	0(0.0)	2(20.0)	0(0.0)	1(10.0)	1(11.1)		
Kanuri	2(5.1)	1(7.1)	1(10.0)	0(0.0)	0(0.0)	2(22.2)		
Gerawa	2(5.1)	1(7.1)	0(0.0)	3(17.6)	0(0.0)	0(0.0)		
Kare-kare	3(7.7)	0(0.0)	0(0.0)	0(0.0)	1(10.0)	0(0.0)		
Warjawa	2(5.1)	1(7.1)	0(0.0)	1(5.9)	1(10.0)	1(11.1)		

### Gender discrimination through discriminant function analysis

The results in Tables 7 and 8 provide insight into the gender differentiation capabilities of the foramen magnum and occipital condyle dimensions based on computed tomography (CT) scans.

Table 7 compares the mean and standard deviation (SD) values of these dimensions between male and female participants. The gender discrimination significance for each variable is assessed using the Wilk's lambda test, F-value, and the corresponding p-value. The lower the Wilk's lambda, the more significant the variable is in distinguishing the two groups. The F-value assesses the degree of variation between groups compared to the variation within groups. The length of the foramen magnum (LFM) had the greatest contribution to gender discrimination, as evidenced by the smallest Wilk's lambda value (0.876), highest F-value (13.875), and a p-value less than 0.001. This shows that there is a statistically significant

difference between males and females concerning the LFM, and it effectively discriminates between the two genders.

In contrast, variables such as WRC, WLC, and MnIC exhibit high Wilk's lambda values and non-significant p-values, indicating they do not significantly contribute to gender differentiation in this context.

**Table 7: Discriminant function analysis using foramen magnum and occipital condyle dimensions in CT scan**

Variable	Male		Female		Wilki's $\lambda$	F	P value*
	Mean	SD	Mean	SD			
LFM	26.35	6.47	21.45	4.50	0.876	13.875	0.001
WFM	21.19	5.87	17.74	4.72	0.925	7.970	0.006
AFM	430.99	209.63	300.66	126.89	0.910	9.720	0.002
CFM	68.37	14.49	61.36	10.32	0.946	5.611	0.020
LRC	16.72	8.78	14.51	5.01	0.984	1.610	0.208
WRC	7.72	3.03	7.77	3.42	1.000	0.003	0.953
LLC	18.24	5.39	16.74	4.66	0.983	1.710	0.184
WLC	8.54	3.44	8.29	3.60	0.999	0.103	0.749
MIC	44.90	7.25	40.26	6.15	0.914	9.190	0.003
MnIC	22.72	4.86	20.90	5.30	0.973	2.751	0.100

**Table 8: Canonical discriminant function coefficient**

Variable	Function
	1
LFM	0.167
Constant	-4.172

## Efficacy of foramen magnum length in predicting gender

Table 9 presents the results of the predictive accuracy of using the foramen magnum length to determine gender within the Bauchi population. The results are divided into predicted group membership versus actual gender, with values indicating the number of correctly sexed cases. Out of 71 male cranial CT scans, 45 were correctly identified as male, resulting in an accuracy rate of 63.4%. However, 26 male cases were incorrectly classified as female, indicating a misclassification rate of 36.6%.

On the other hand, the predictive accuracy was higher for females. Out of 29 female cranial CT scans, 23 were accurately identified as female, giving an accuracy rate of 79.3%. However, 6 female cases were incorrectly classified as male, denoting a misclassification rate of 20.7%. While the foramen magnum length was a significant predictor of gender, as demonstrated in previous tables, the accuracy of gender identification varied between males and females. The accuracy was higher for females compared to males in the studied population. This suggests that the discriminant function using the foramen magnum length is more reliable for sexing female crania than male in this population. However, overall, it correctly classified 68.0% of all cases, demonstrating its utility in gender identification in the Bauchi population.

**Table 9: Accuracy of foramen magnum length for gender prediction in Bauchi population**

Gender	Predicted group membership	
	Male	Female
Male (n=71)	45	26
Female (n=29)	6	23
Male (100%)	63.4	36.6

Female (100%)	20.7	79.3
---------------	------	------

---

### **Correlation analysis of foramen magnum and occipital Condyle Dimensions**

Table 10 explores the correlations between different dimensions of the foramen magnum and occipital condyles. There is a statistically significant strong correlation between Length of Foramen Magnum (LFM) and Length of Right Condyle (LRC) ( $r=0.279$ ,  $p<0.005$ ), suggesting that as the length of the foramen magnum increases, the length of the right condyle also increases in a meaningful way.

Moreover, a similar trend can be observed with LFM and MIC ( $r=0.316$ ,  $p<0.001$ ), suggesting a significant correlation between these two measurements. The Width of Foramen Magnum (WFM) also shows strong correlations with several other dimensions. Notably, there is a strong relationship between WFM and LRC ( $r=0.337$ ,  $p<0.001$ ), Width of Left Condyle (WLC) ( $r=0.264$ ,  $p<0.008$ ), and MIC ( $r=0.404$ ,  $p<0.001$ ).

Thus the results revealed significant relationships between various foramen magnum and occipital condyle dimensions, providing key insights into the intricate anatomical relationships between these structures in among Bauchi population.

**Table 10: Relationship of foramen magnum and occipital condyle dimensions**

<b>Variable</b>	<b>correlations</b>	<b>LRC</b>	<b>WRC</b>	<b>LLC</b>	<b>WLC</b>	<b>MIC</b>	<b>MniC</b>
LFM	r	0.279	0.194	0.252	0.231	0.316	0.220
	p value	0.001	0.053	0.012	0.021	0.001	0.028
WFM	r	0.337	0.203	0.296	0.264	0.404	0.259
	p value	0.001	0.042	0.003	0.008	0.001	0.009

## Discussion

This comprehensive study provides a detailed examination of the foramen magnum and occipital condyle dimensions within the Bauchi population, encompassing an array of morphological variations and their potential significance in sex determination.

As our study demonstrates, the foramen magnum's most prevalent shapes were oval and round, mirroring the results of previous research (Garcia *et al.*, 2011). Similarly, the occipital condyle shapes noted in our sample - kidney, oval, 8-like, S-like, ring-like, and triangular - align with the shapes identified in other studies (Kumar *et al.*, 2019) (Ozer *et al.*, 2011), though there was a discrepancy in the most common shape, with our study identifying the kidney shape as the most common, in contrast to the oval-like shape identified by Ozer *et al.*

Sex-related differences in foramen magnum dimensions were evident in our research. We discovered that the mean Length and Width of the Foramen Magnum (LFM, WFM) were larger in males than in females, echoing the results of with (El- Barrany *et al.*, 2016).

However, when compared to previous studies (Gopalro *et al.*, 2013, Uthman *et al.*, 2014 and El- Barrany *et al.*, 2016), the dimensions found in our study were lower. This disparity could be attributed to differences in population, methodology, or measurement techniques and further emphasizes the need for population-specific studies.

Our findings also reveal that the mean Area of Foramen Magnum (AFM) of male skulls ( $427.34 \pm 208.85 \text{mm}^2$ ) is significantly larger than female skulls ( $311.65 \pm 124.58 \text{mm}^2$ ) (Table 1 and 4). Even though the AFM values in our study were lower than those reported in previous studies (Gunay *et al.*, 2000) in both male and female (909.9 and 819.0 $\text{mm}^2$ ), (Catalina and Herrera 1987) (888.4 and 801.0 $\text{mm}^2$ ), (Routal *et al.*, 2014) (819.0 and 771.0 $\text{mm}^2$ ) and (Salih

*et al.*, 2015) (819.84 and 692.13mm<sup>2</sup>), the trend of males having larger AFM than females remains consistent.

Interestingly, we found that the width of the occipital condyles (CFM) was broader in females than in males (68.22±14.44 and 61.54 ±10.35) (Table 1), a finding that contradicts earlier studies but aligns with (Sneha *et al.*, 2014). The variability in these results underlines the complexity of the biological factors shaping these structures and calls for further research to elucidate these sex-based discrepancies.

In terms of sex determination, our study indicates that LFM could predict gender in the Bauchi population with an overall accuracy rate of 68.0%. This finding corroborates other research that identified single variables as significant gender discriminators (Singh and Talwar, 2013) (Macaluso, 2010) (Wani *et al.*, 2021). Moreover, our study establishes significant correlations between various foramen magnum and occipital condyle dimensions, lending further credence to the hypothesis that these structures could be used for sex determination. However, some relationships such as the correlation between the LFM and LLC or the width of the right and left occipital condyle were not found to be significant, emphasizing the need for continued research in this field.

In conclusion, our findings contribute to the growing body of literature emphasizing the value of foramen magnum and occipital condyle morphology and dimensions in anthropological and forensic contexts. Additionally, variations in dimensions should be taken into consideration when performing clinical and radiological diagnoses and during a surgical procedure. This study also reveals that the shape of the foramen magnum and the occipital condyle is not a mark of a specific ethnic group. Future studies should consider these findings when examining morphological sex differences and explore the potential of these structures as markers of sexual dimorphism.



## Authors contribution

**Fatima Muhammad:** Data curation, Writing - original draft. **Umar Ahmad:** Conceptualisation, Methodology, Resources, Writing- Review & Editing; Supervision. **Tawfiq Yousef Tawfiq ZYOUD:** Methodology, Writing- Review & Editing. **Murtala Muhammad Jibril:** Writing- Review & Editing. **Suleiman Hamidu Kwairanga:** Writing- Review & Editing.

## Conflict of interest

The authors have declared no competing interest.

## References

- Ads, H. O., Attalla, S. M., Abdalqader, M. A., Ramanathan, P. A. P., & Zaman, K. N. B. K. (2021). *Computed tomography study of the biometric and morphometric characteristics of the occipital condyles among malaysian population. Annals of the Romanian Society for Cell Biology, 25(3), 7646–7653.*
- Anjum, A., Pandurangam, G., Garapati, S., Bandarupalli, N., Rabbani, H., & Divya P. (2021). *Morphology and morphometric study of occipital condyles. International Journal of Anatomy and Research, 9(1.3), 7905–7911.* <https://doi.org/10.16965/ijar.2021.107>
- Avci, E., Dagtekin, A., Ozturk, A. H., Kara, E., Ozturk, N. C., Uluc, K., Akture, E., & Baskaya, M. K. (2010). *Anatomical variations of the foramen magnum, occipital condyle and jugular tubercle. In Turkish Neurosurgery.* <https://doi.org/10.5137/1019-5149.jtn.3838-10.1>
- Babu, F. F. K. Y. (2016). Evaluating the Shape of Foramen Magnum and Overlapping of Occipital Condyle on the Foramen. *International Journal of Science and Research (IJSR), 5(9), 1078–1082.* <https://www.ijsr.net/archive/v5i9/ART2016858.pdf>
- Bayat, P., Bagheri, M., Ghanbari, A., & Raoofi, A. (2014). *Characterization of Occipital Condyle and Comparison of its Dimensions with Head and Foramen Magnum Circumferences in Dry Skulls of Iran. International Journal of Morphology, 32(2), 444–448.* <https://doi.org/10.4067/s0717-95022014000200011>
- El- Barrany, U. M., Ghaleb, S. S., Ibrahim, S. F., Nouri, M., & Mohammed, A. H. (2016). *Sex Prediction using Foramen Magnum and Occipital Condyles Computed Tomography Measurements in Sudanese Population. Arab Journal of Forensic Sciences and Forensic Medicine, 1(3), 414–423.* <https://doi.org/10.12816/0033135>
- Gruber, P., Henneberg, M., Böni, T., & Rühli, F. J. (2009). Variability of human foramen magnum size. In *Anatomical Record* (Vol. 292, Issue 11, pp. 1713–1719). <https://doi.org/10.1002/ar.21005>
- Kumar, A., Potdar, P., Singh, K., & Dhakar, J. S. (2019). *A study of foramen magnum and its clinical relevance. 5(2), 72–77.*
- Macaluso, P. J. (2010). *Metric sex determination from the basal region of the occipital bone in a documented french sample Metric sex determination from the basal region of the occipital bone in a documented french sample. June.* <https://doi.org/10.1007/s13219-010-0023-x>

- Salih, A. M., Ayad, C. E., Ahmed, E., Kajoak, S. A., Arabia, S., & Ayad, C. E. (2015). *Morphometric Analysis of the Sudanese Foramen Magnum*: A Computerized Tomography Study College of Medical Radiological Science , Sudan University of College of Applied Medical Sciences , *Diagnostic Radiology*. 22(6), 46–54.
- Singh, K. C., Rai, G., & Rai, R. (2017). Morphological Variations of the Foramen Magnum in Adult Human Dry Skull in Eastern UP ( India ) Population. *International Journal of Medical Research Professionals*, 3(2), 205–208.  
<https://doi.org/10.21276/ijmrp.2017.3.2.041>
- Vinutha, S. P., Suresh, V., & Shubha, R. (2018). *Discriminant Function Analysis of Foramen Magnum Variables in South Indian Population: A Study of Computerised Tomographic Images*. *Anatomy Research International*, 2018, 1–8.  
<https://doi.org/10.1155/2018/2056291>
- Wani, B. A., Nazir, N., Sheikh, R. A., & Hussain, A. (2021). *mobile devices*.  
<https://doi.org/10.4103/jfsm.jfsm>
- Albanese J, Cardoso HF, (2005) Saunders SR. *Universal methodology for developing univariate sample-specific sex determination methods: an example using the epicondylar breadth of the humerus*. *J Archaeol Sci*; 32:143-2.
- Anil Kumar, Mitesh Dave, Sanam Anwar. (2015). *Morphometric evaluation of foramen magnum in dry human skulls*. *Int J Anat Res*; 3(2):1015-23
- Edwards K, Viner M D, Schweitzer W, Thali M J. (2013). *Sex determination from the foramen magnum*. *J Foren Radio Imag*;1(4):186 .
- Erdil, F. H V. Sabanciogullari, M. Cimen, and O. Isik, (2010) “*Morphometric analysis of the foramen magnum by computed tomography*,” *Erciyes Medical Journal*, vol. 32, no. 3, pp. 167–170
- Garcia E. E, A. P. Carlos, O. B. Leandro, C. L. Erika, and S. M. Hector, (2011) “*Tomographic morphometry of the foramen magnum and its relation to sex and Mapuche ethnicity*,” *Academic Journals Database*, vol. 5, no. 1, pp. 28–31.
- Gautam Kanodia, Vijay Parihar, Yad R Yadav, Pushp R Bhatele and Dhananjay Sharma. (2012). *Morphometric analysis of posterior fossa and foramen magnum*. *J Neurosci Rural Pract*; 3(3):261–6
- Gopalrao SR, Solanke P, Ugale M, Balsurkar S. (2013) *Computed tomographic scan study of morphometry of foramen magnum*. *Int J Curr Res Rev*; 5:41.
- Günay Y, Altinkök M. (2000). *The value of the size of foramen magnum in sex determination*. *J. Clin. Forensic. Med.*, 7(3):147-9.
- Menezes AH, Traynelis VC. (2007) *Anatomy and biomechanics of normal craniovertebral junction (a) and biomechanics of stabilization (b)*. *Childs Nerv Syst*;24(10):1091–1100
- Muralidhar P Shepur, Magi M, Nanjundappa B, Pavan P Havaladar, Premalatha Gogi, Shaik Hussain Saheb. (2014). *Morphometric analysis of foramen magnum*. *Int J Anat Res*;2(1):249-55.
- Murshed K. A., Cicekcibasi A. E., Tuncer I. (2003): *Morphometric evaluation of the foramen magnum and variations in its shape: a study on computerized tomographic images of normal adults*. *Turkish journal of Medical Sciences*, vol. 33: 301-306.
- Ozer MA, Celik S, Govsa F, et al. (2011) *Anatomical determination of a safe entry point for occipital condyle screw using three dimensional landmarks*. *Eur Spine J*;20(9):1510–1517.
- Radhakrishna S.K. Shivarama C.H. Ramakrishna A. Bhagya B. (2012). *Morphometric analysis of foramen magnum for sex determination in South Indian population*. *NUJHS*; 2(1):20-2.

- Singh and Talwar. (2013)Morphometric analysis of foramen magnum in human skull for sex determination. *Hum Biol Rev*; 2(1):29-41.
- Standring S., N. R. Borely, P. Collins, A. R Crossman, M. A. Gatzoulis, and J. C. Healy, *Gray's Anatomy, Anatomical Basis of Clinical Practice*, Churchill Livingstone,UK, 40th edition, 2008.
- Suazo G I C, Russo P P, Zavando M D A, Smith R L. (2003). *Sexual dimorphism in the foramen magnum dimensions. Int J Morphol*; 27(1):21-3.
- TY, T. Z., SN, A. R., Suppiah, S., & Mahmud, R. (2020). *Decoding death by unknown causes using post mortem image-guided virtopsy: A review of recent literature and the Malaysian experience. The Medical journal of Malaysia*, 75(4), 411-418.
- Uthman AT, Rawi NA and Timini JA. (2012). *Evaluation of foramen magnum gender determination using helical CT scanning. Dentomaxillofac Radiol*; 14:197-202.
- Zyoud, T. Y. T., Rashid, S. N. A., Suppiah, S., Mahmud, R., Kabeer, A., Abd Manaf, R., & Rahim, E. A. (2020). *Estimation of body height from spinal length measurements using post-mortem computed tomographic images. The Malaysian Journal of Pathology*, 42(3), 423-431.