

1 **Dynamics of T-cell responses following COVID-19 mRNA vaccination**  
2 **and breakthrough infection in older adults**

3  
4 Sneha Datwani<sup>1</sup>, Rebecca Kalikawe<sup>1</sup>, Francis Mwimanzi<sup>1</sup>, Sarah Speckmaier<sup>2</sup>, Richard  
5 Liang<sup>2</sup>, Yurou Sang<sup>1</sup>, Rachel Waterworth<sup>1</sup>, Fatima Yaseen<sup>3</sup>, Hope R. Lapointe<sup>2</sup>, Evan  
6 Barad<sup>1,2</sup>, Mari L. DeMarco<sup>4,5</sup>, Daniel T. Holmes<sup>4,5</sup>, Janet Simons<sup>4,5</sup>, Julio S.G.  
7 Montaner<sup>3,6</sup>, Marc G. Romney<sup>4,5</sup>, Zabrina L. Brumme<sup>1,2\*,#</sup>, Mark A. Brockman<sup>1,2,3,\*,#</sup>

8  
9 <sup>1</sup> Faculty of Health Sciences, Simon Fraser University, Burnaby, Canada;  
10 <sup>2</sup> British Columbia Centre for Excellence in HIV/AIDS, Vancouver, Canada  
11 <sup>3</sup> Department of Molecular Biology and Biochemistry, Simon Fraser University, Burnaby,  
12 Canada;  
13 <sup>4</sup> Division of Medical Microbiology and Virology, St. Paul's Hospital, Vancouver,  
14 Canada;  
15 <sup>5</sup> Department of Pathology and Laboratory Medicine, University of British Columbia,  
16 Vancouver, Canada  
17 <sup>6</sup> Department of Medicine, University of British Columbia, Vancouver, Canada;

18  
19 \*equal contributions

20  
21 #Corresponding authors: MAB, [mark\\_brockman@sfu.ca](mailto:mark_brockman@sfu.ca); ZLB, [zbrumme@sfu.ca](mailto:zbrumme@sfu.ca)

22  
23 Abstract: 248 words

24 Text: 3,093 words

25 Inserts: 5 (1 Table, 4 Figures)

26 Supplemental files: 8 (3 Supplemental Figures, 5 Supplemental Tables)

27

28

29 **Footnotes**

30

31 **Potential Conflicts of Interest:** The authors have no conflicts of interest to declare.

32

33 **Funding statement:** This work was supported by the Public Health Agency of Canada  
34 through a COVID-19 Immunology Task Force COVID-19 "Hot Spots" Award (2020-  
35 HQ-000120 to MGR, ZLB, MAB). Additional funding was received from the Canadian  
36 Institutes for Health Research (GA2-177713 and the Coronavirus Variants Rapid  
37 Response Network (FRN-175622) to MAB), the Canada Foundation for Innovation  
38 through Exceptional Opportunities Fund – COVID-19 awards (to MAB, MLD, ZLB).  
39 FM was supported by a fellowship from the CIHR Canadian HIV Trials Network. FY  
40 and EB were supported by an SFU Undergraduate Research Award. MLD and ZLB hold  
41 Scholar Awards from the Michael Smith Foundation for Health Research.

42

43 **ABSTRACT** (248/250 words)

44 **Introduction:** While older adults generally mount weaker antibody responses to a  
45 primary COVID-19 vaccine series, T-cell responses remain less well characterized in this  
46 population. We compared SARS-CoV-2 spike-specific T-cell responses after two- and  
47 three-dose COVID-19 mRNA vaccination and subsequent breakthrough infection in  
48 older and younger adults.

49

50 **Methods:** We quantified CD4<sup>+</sup> and CD8<sup>+</sup> T-cells reactive to overlapping peptides  
51 spanning the ancestral SARS-CoV-2 spike protein in 40 older adults (median age 79) and  
52 50 younger health care workers (median age 39), all COVID-19 naive, using an  
53 activation induced marker assay. T-cell responses were further assessed in 24  
54 participants, including 8 older adults, who subsequently experienced their first SARS-  
55 CoV-2 breakthrough infection.

56

57 **Results:** A third COVID-19 mRNA vaccine dose significantly boosted spike-specific  
58 CD4<sup>+</sup> and CD8<sup>+</sup> T-cell frequencies to above two-dose levels in older and younger adults.  
59 T-cell frequencies did not significantly differ between older and younger adults after  
60 either dose. Multivariable analyses adjusting for sociodemographic, health and vaccine-  
61 related variables confirmed that older age was not associated with impaired cellular  
62 responses. Instead, the strongest predictors of CD4<sup>+</sup> and CD8<sup>+</sup> T-cell frequencies post-  
63 third-dose were their corresponding post-second-dose frequencies. Breakthrough  
64 infection significantly increased both CD4<sup>+</sup> and CD8<sup>+</sup> T cell frequencies, to comparable  
65 levels in older and younger adults. Exploratory analyses revealed an association between

66 HLA-A\*02:03 and higher post-vaccination CD8+ T-cell frequencies, which may be  
67 attributable to numerous strong-binding HLA-A\*02:03-specific CD8+ T-cell epitopes in  
68 spike.

69

70 **Conclusion:** Older adults mount robust T-cell responses to two- and three-dose COVID-  
71 19 mRNA vaccination, which are further boosted following breakthrough infection.

## 72 INTRODUCTION

73 In many jurisdictions, older adults were prioritized to receive COVID-19 vaccines  
74 and boosters due to their increased risk of severe outcomes following SARS-CoV-2  
75 infection<sup>1-3</sup>. While vaccination has been highly effective at preventing severe disease in  
76 this group<sup>4</sup>, vaccine responses in older adults can nevertheless be blunted by age-related  
77 immune impairments, or elevated frequencies of chronic health conditions that can  
78 dampen adaptive immune responses<sup>5-9</sup>. Indeed, after COVID-19 vaccines were rolled out  
79 globally, observational studies revealed that older adults generally mounted weaker  
80 binding and neutralizing antibody to the primary vaccine series<sup>10-15</sup>, leading to  
81 widespread recommendations that this group receive third vaccine doses and regular  
82 booster vaccinations<sup>16,17</sup>. Comparably fewer studies however have investigated cellular  
83 immune responses to COVID-19 vaccination – namely, CD4+ helper T cells that play a  
84 central role in the generation of antigen-specific B cells and antibody responses, and  
85 CD8+ cytotoxic T cells that recognize and eliminate virus-infected cells<sup>18</sup> – in older  
86 compared to younger adults. While mRNA vaccines can induce strong T cell  
87 responses<sup>19,20</sup>, evidence suggests that the frequency of spike-specific CD4+ T cells  
88 following COVID-19 vaccination may be lower in older adults<sup>11,13,21</sup>. An improved  
89 understanding of age-associated differences in T cell responses to COVID-19 mRNA  
90 vaccines will help to inform future efforts to enhance protective immunity in older adults.  
91 Here, we investigated the dynamics of spike-specific CD4+ and CD8+ T cell responses  
92 elicited after two and three doses of COVID-19 mRNA vaccine in a cohort of 40 older  
93 adults and 50 younger healthcare workers who remained naive to SARS-CoV-2 during  
94 this time. We additionally investigated spike-specific CD4+ and CD8+ T cell responses

95 in a subset of 24 individuals, including 8 older adults, who subsequently experienced  
96 their first SARS-CoV-2 breakthrough infection between one and six months after  
97 receiving three vaccine doses. Finally, we explored associations between HLA class I  
98 allele carriage and the magnitude of spike-specific CD8<sup>+</sup> T cell frequencies after two and  
99 three COVID-19 mRNA vaccine doses.

100

## 101 **METHODS**

102 *Participants.* Our cohort, based in British Columbia (BC) Canada, has been described  
103 previously <sup>22</sup>. Here, we studied a randomly selected subset of 50 healthcare workers  
104 (HCW) and 40 older adults (OA, age >65 years) who remained COVID-19 naive until at  
105 least one month after their third COVID-19 mRNA vaccine dose (**Table 1**).

106

107 *Ethics approval.* Written informed consent was obtained from all participants or their  
108 authorized decision makers. This study was approved by the University of British  
109 Columbia/Providence Health Care and Simon Fraser University Research Ethics Boards.

110

111 *Antibody assays.* We had previously quantified IgG-binding antibodies in serum against  
112 the ancestral SARS-CoV-2 spike receptor binding domain (RBD) using the V-plex  
113 SARS-CoV-2 (IgG) ELISA kit (Panel 22; Meso Scale Diagnostics)<sup>14,15,22</sup>. Serum was  
114 diluted 1:10000 and reported in World Health Organization (WHO) International  
115 Standard Binding Antibody Units (BAU)/mL using the manufacturer-supplied  
116 conversions. SARS-CoV-2 infections were detected by the development of serum  
117 antibodies against Nucleocapsid (N) using the Elecsys Anti-SARS-CoV-2 assay (Roche

118 Diagnostics), combined with diagnostic (PCR- and/or rapid-antigen-test-based)  
119 information where available.  
120  
121 ***T-cell assays.*** Cryopreserved peripheral blood mononuclear cells (PBMCs) were thawed  
122 and diluted in TexMACS media (Miltenyi Biotec, Cat#130-097-196). PBMCs were  
123 stimulated at  $1 \times 10^6$  cells per well for 24 hours with peptide pools spanning the SARS-  
124 CoV-2 ancestral spike protein (15-mers, overlapping by 11 amino acids) (Miltenyi  
125 Biotec, Cat#130-127-953) in duplicate in a 96-well U-bottom plate. PBMC were  
126 incubated with DMSO only (no peptide) as a negative control and 2  $\mu\text{g/ml}$  Cytostim  
127 reagent (Miltenyi Biotec, Cat#130-092-172) as a positive control. Following stimulation,  
128 cells were labeled with CD8-APC/Cyanine7 (Biolegend, Cat#301016), CD4-FITC  
129 (Biolegend, Cat#300538), CD137-APC (Biolegend, Cat#309810), CD69-PE (BD,  
130 Cat#555531), OX40-PE-Cy7 (Biolegend, Cat#350012), CD3-PerCP/Cyanine5.5  
131 (Biolegend, Cat#317336) CD14-V500 (BD, Cat#561391), CD19-V500 (BD,  
132 Cat#561121) and 7-AAD Viability Staining Solution (Biolegend, Cat#420404). Data  
133 were acquired on a Beckman Coulter Cytotflex flow cytometer, with a minimum of  
134 10,000 CD3+ T cells assayed per participant. After identifying CD3+CD4+ and  
135 CD3+CD8+ T cell subsets, the percentage of stimulated cells was determined based on  
136 upregulation of activation markers, using CD137 and OX40 for CD4+ T cells and CD137  
137 and CD69 for CD8+ T cells (see gating strategy in **Figure S1**). Data were analyzed in  
138 FlowJo version 10.8.1.  
139

140 ***HLA class I genotyping.*** Genomic DNA was isolated from 50 µl whole blood using the  
141 NucliSENS EasyMag system (BioMerieux). HLA class I genotyping was performed by  
142 locus-specific Polymerase Chain Reaction (PCR) amplification of the region spanning  
143 exons 2 and 3 of the HLA-A, B and -C loci, as reported previously<sup>23</sup>. Amplicons were bi-  
144 directionally sequenced on an ABI 3730xl automated Sanger DNA sequencer using  
145 BigDye (v3.1) chemistry (Applied Biosystems). Chromatograms were analyzed using the  
146 semiautomatic base-calling software RECall<sup>24</sup>, with the resulting bulk sequences  
147 interpreted to subtype-level resolution using in-house software.

148

149 ***Epitope prediction.*** Peptides derived from ancestral spike protein (GenBank:  
150 NC\_045512.2) that are likely to bind to HLA-A\*02:01 and/or A\*02:03 were predicted  
151 using NetMHCpan-4.1 (<https://services.healthtech.dtu.dk/services/NetMHCpan-4.1>; <sup>25</sup>).  
152 Potential 8-, 9-, and 10- amino acid epitopes were determined for both alleles using  
153 default thresholds for strong binders (% Rank <0.5) and weak binders (% Rank 0.5-2).

154

155 ***Statistical analyses.*** Continuous variables were compared using the Mann-Whitney U-  
156 test (for unpaired data) or Wilcoxon test (for paired measures). Relationships between  
157 continuous variables were assessed using Spearman's correlation. Zero-inflated beta  
158 regressions were used to investigate the relationship between age and vaccine-induced T-  
159 cell responses using a confounder model that adjusted for variables that could influence  
160 these responses, or that differed in prevalence between groups. These regressions model  
161 the response variable as a beta-distributed random variable whose mean is given by a  
162 linear combination of the predictor variables (after a logit transformation). Beta

163 distributions are bounded below and above by 0 and 100%, making this a standard choice  
164 of regression for frequency data. A beta distribution however does not admit values of 0  
165 or 100. As our data included some non-responders (*i.e.* 0 values) we used a zero-inflated  
166 beta distribution, which allows for zeros in the data. For analyses performed after two-  
167 dose vaccination, included variables were: age (per year), sex at birth (female as  
168 reference), ethnicity (non-white as reference), number of chronic conditions (per  
169 additional), mRNA-1273-containing initial vaccine regimen (dual BNT162b2 vaccination  
170 as reference) and the interval between first and second doses (per day). Analyses  
171 performed after three-dose vaccination also included the third COVID-19 mRNA dose  
172 brand (BNT162b2 as reference), the interval between second and third doses (per day),  
173 and the % spike-specific T-cells after two doses (per percent increase). All tests were  
174 two-tailed, with  $p < 0.05$  considered statistically significant. For the analyses of the  
175 relationships between HLA class I allele carriage, multiple comparisons were addressed  
176 using a q-value (false discovery rate) approach<sup>26</sup>, with associations  $p < 0.05$  and  $q < 0.2$   
177 considered statistically significant. Analyses were conducted using Prism v9.2.0  
178 (GraphPad) and in R.

179

## 180 RESULTS

### 181 *Participant characteristics*

182 Characteristics of the 40 older adults (OA) and 50 younger health care workers  
183 (HCW), all of whom remained COVID-19 naive until at least one month after their third  
184 vaccine dose, are shown in **Table 1**. OA and HCW were a median of 79 and 39 years old,  
185 respectively (overall range 24-93 years old), and predominantly female. OA were



186 predominantly of white ethnicity (73%, compared to 46% of HCW) and had more  
187 chronic health conditions (median of 1, interquartile range [IQR] 0-2 in OA versus 0  
188 [IQR 0-1] in HCW). Most participants (80% of OA and 96% of HCW) initially received  
189 two doses of BNT162b2; the remainder received two doses of mRNA-1273 or a  
190 heterologous mRNA vaccine regimen. Second doses were administered a median of ~3  
191 months after the first. Third vaccine doses were predominantly mRNA-1273 (62% of OA  
192 and 50% of HCW), which were administered in an age-dependent manner per local  
193 guidelines: OA were eligible for 100 mcg whereas HCW were eligible for 50 mcg (all  
194 BNT162b2 doses were 30 mcg). Third doses were administered a median of 6 months  
195 after the second. A total of 20% of OA and 32% of HCW experienced their first SARS-  
196 CoV-2 infection between one and six months post-third dose, where these were likely  
197 Omicron BA.1 or BA.2 infections based on local molecular epidemiology trends<sup>27</sup>. The  
198 post-infection follow-up visit occurred 53 (IQR 40-119) days later for OA and 63 (IQR  
199 31-104) days later for HCW.

200

### 201 *CD4+ and CD8+ T-cell responses following two and three COVID-19 vaccine doses*

202 Prior to vaccination, the percentage of spike-specific CD4+ and CD8+ T cells,  
203 measured in a subset of 10 OA and 10 HCW, was negligible (**Figures 1A, 1B**).  
204 Following two vaccine doses, the percentage of spike-specific CD4+ T cells increased  
205 significantly from pre-vaccine levels (paired measures  $p=0.002$  for both OA and HCW),  
206 reaching a median 0.25% (IQR 0.14-0.57%) in OA and a median 0.42% (IQR 0.14-  
207 0.66%) in HCW, a difference that was not statistically significant between groups  
208 ( $p=0.28$ ; **Figure 1A**). A third vaccine dose further boosted the percentage of spike-

209 specific CD4+ T-cells (paired measures  $p < 0.0001$  for both OA and HCW), reaching a  
210 median 0.62% (IQR 0.27-0.91) in OA compared to a median 0.77% (IQR 0.45-1.08) in  
211 HCW, a difference that was not statistically significant between groups ( $p = 0.07$ ) (**Figure**  
212 **1A**).

213 CD8+ T cell responses also increased significantly from pre-vaccine levels  
214 following two vaccine doses (paired measures  $p = 0.002$  in both groups), reaching a  
215 median 0.24% (IQR 0.13-0.45%) in OA and a median 0.33% (IQR 0.16-0.63%) in HCW,  
216 a difference that was not statistically significant between groups ( $p = 0.11$ ; **Figure 1B**). A  
217 third vaccine dose further boosted the percentage of spike-specific CD8+ T-cells (paired  
218 measures  $p < 0.0001$  for both groups) to a median 0.62% (IQR 0.34-1.08%) in OA and a  
219 median 0.78% (IQR 0.42-1.18%) in HCW, a difference that was not statistically  
220 significant between groups ( $p = 0.39$ ; **Figure 1B**).

221 We observed no correlation between age and the percentage of spike-specific  
222 CD4+ or CD8+ T-cells after either the second or third vaccine dose, when age was  
223 assessed as a continuous variable (Spearman's  $\rho$  ranged from  $= -0.14$  to  $-0.03$ ; all  $p > 0.20$ ;  
224 not shown). Moreover, we confirmed that age remained not significantly associated with  
225 vaccine-induced T-cell responses after adjusting for relevant sociodemographic, health  
226 and vaccine-related variables (**Tables S1 and S2**). Rather, the strongest predictor of the  
227 % of spike-specific CD4+ and CD8+ T-cells following three vaccine doses was the  
228 corresponding % of spike-specific T-cells following two doses (**Table S2**). For example,  
229 the zero-inflated beta regression estimates for the impact of each 1% increment in post-  
230 second dose T-cell frequencies on post-third dose frequencies was 0.69 for CD4+ T-cells  
231 ( $p = 2 \times 10^{-16}$ ) and 0.77 for CD8+ T-cells ( $p = 1 \times 10^{-13}$ ) (**Table S2**). To interpret these

232 estimates, which do not translate the effects of the predictors linearly to the predicted  
233 mean: if the value of the linear predictor was  $x$  for a given set of values of the predictors,  
234 and the % of spike-specific CD4+ T-cells after two vaccine doses was increased by 1%,  
235 the resulting value of the linear predictor would now be  $x + 0.69$ , which translates to a  
236 non-linear increase in the regressed mean from  $100 * \text{logit}(x)$  to  $100 * \text{logit}(x + 0.69)$ ,  
237 where the factor of 100 converts the proportions to percentages. Enhanced CD4+ T-cell  
238 frequencies after three vaccine doses were also associated with male sex, having received  
239 mRNA-1273 as a third vaccine dose, and – somewhat surprisingly – a higher number of  
240 health conditions, though these correlates were all far weaker than the post-second-dose  
241 T cell responses (estimates 0.13-0.23;  $p=0.03$  to 0.006; **Table S2**). We hypothesize that  
242 association between more health conditions and better responses is because individuals  
243 with such conditions benefited particularly from a third dose, after adjusting for post-  
244 second-dose responses. White ethnicity was also weakly associated with lower CD4+ T-  
245 cell frequencies after two vaccine doses (estimate -0.38;  $p=0.03$ ; **Table S1**).

246

#### 247 *Correlations between vaccine-induced humoral and T-cell responses*

248 The percentage of spike-specific CD4+ and CD8+ T cells correlated strongly with  
249 one another after the second vaccine dose (Spearman's  $\rho=0.60$ ;  $p<0.0001$ ) as well as after  
250 the third dose (Spearman's  $\rho=0.59$ ;  $p<0.0001$ ; **Figure 2A**). No correlation however was  
251 observed between the magnitude of the COVID-19 vaccine antibody response, in terms  
252 of serum anti-spike Receptor Binding Domain (RBD) IgG concentrations after either the  
253 second or third vaccine dose, and the percentage of spike-specific CD4+ T-cells at those

254 times (Spearman's  $\rho = -0.09$ ,  $p=0.41$  for post-second dose;  $\rho = -0.11$ ,  $p=0.32$  for post-  
255 third dose; **Figure 2B**).

256

### 257 *Correlations between HLA class I genotypes and CD8+ T-cell responses*

258 Participants expressed a total of 29 different HLA-A, 42 HLA-B and 23 HLA-C  
259 alleles, defined at the subtype level (**Figure S2**). Exploratory analyses that included all  
260 HLA alleles observed in a minimum of 5 participants revealed that, following three  
261 vaccine doses, expression of HLA-A\*02:03 was associated with higher spike-specific  
262 CD8+ T cell response frequencies after correcting for multiple comparisons ( $p=0.01$ ;  
263  $q=0.08$ ), while expression of B\*39:01, B\*44:03, or C\*07:01 was associated with lower  
264 spike-specific CD8+ T cell response frequencies (all  $p<0.03$ ,  $q<0.13$ ) (**Table S3**). After  
265 correcting for multiple comparisons, we did not identify any HLA class I alleles that were  
266 significantly associated with spike-specific CD8+ T cell response frequencies after *two*  
267 vaccine doses, but the top allele after two vaccine doses was also A\*02:03 ( $p=0.02$ ;  
268  $q=0.34$ ; not shown).

269 To further explore the interaction with A\*02:03, we used NetMHCpan-4.1<sup>25</sup> to  
270 identify all 8-, 9-, and 10-amino acid spike epitopes that are predicted to bind to this  
271 allele or to the common and closely related A\*02:01 allele, which showed no beneficial  
272 impact on CD8+ T cell responses after three vaccine doses ( $p=0.46$ ,  $q=0.56$ ; **Table S3**).  
273 In total, 29 strong binders (% Rank <0.5) and 56 weak binders (% Rank 0.5-2) were  
274 observed for A\*02:03, compared to 20 strong binders and 58 weak binders for A\*02:01  
275 (**Table S4**). A cumulative view of strong binders, plotted by % Rank, is shown in **Figure**  
276 **3A**. An analysis of 30 shared epitopes that displayed strong binding affinity for either

277 allele further revealed that these epitopes were frequently predicted to bind more strongly  
278 to A\*02:03 than A\*02:01 (Wilcoxon matched pairs test,  $p=0.009$ ) (**Figure 3B** and **Table**  
279 **S5**). Notably, seven weak-binding A\*02:01 epitopes (all with % Ranks of ~1 to 2) were  
280 predicted to bind A\*02:03 strongly, while only one moderate-binding A\*02:03 epitope  
281 (GLTVLPPLL, % Rank 0.69) was predicted to bind strongly to A\*02:01 (% Rank 0.26)  
282 (**Figure 3B**). These results suggest that higher spike peptide affinity for A\*02:03  
283 contributes to enhanced CD8+ T cell responses following vaccination.

284

### 285 *Breakthrough infection boosts CD4+ and CD8+ T-cell responses*

286 Post-vaccination breakthrough SARS-CoV-2 infection, which was observed in 8  
287 (20%) OA and 16 (32%) HCW, further boosted the percentage of both spike-specific  
288 CD4+ and CD8+ T-cells ( $p \leq 0.008$  for all paired longitudinal comparisons; **Figures 4A,**  
289 **4B**). The median percentage of spike-specific CD4+ T-cells increased to 0.73% (IQR  
290 0.58-1.10) in OA and 0.86% (IQR 0.51-1.18) in HCW (between-group comparison  
291  $p=0.78$ ; **Figure 4A**) while the median percentage of spike-specific CD8+ T-cells  
292 increased to 0.98% (IQR 0.81-1.77) in OA and 1.13% (IQR 0.71-1.87) in HCW  
293 (between-group comparison  $p=0.66$ ; **Figure 4B**). A full longitudinal representation of  
294 CD4+ and CD8+ T cell responses induced by vaccination and breakthrough infection, in  
295 all studied participants, is shown in **Figure S3**.

296

## 297 **DISCUSSION**

298 We observed that the frequencies of SARS-CoV-2 spike-specific CD4+ and CD8+ T  
299 cells were not significantly different between older and younger adults after two doses of

300 COVID-19 mRNA vaccine, and that these responses were enhanced similarly by a third  
301 vaccine dose regardless of age. Furthermore, both older and younger adults mounted  
302 robust T cell responses following a post-vaccine breakthrough infection. These results are  
303 consistent with a recent report showing that spike-specific T cell responses measured  
304 using an AIM assay were equivalent in older and younger adults after two doses of  
305 mRNA vaccine<sup>21</sup>, though another study reported impaired T cell effector function,  
306 including lower cytokine production, in older adults following two vaccine doses<sup>13</sup>. Prior  
307 studies have also found weaker T cell responses in older adults after only one vaccine  
308 dose<sup>11,21,28</sup>, but we did not examine this time point here. We also observed no association  
309 between CD4<sup>+</sup> T cell responses and RBD-specific IgG antibodies after either two or  
310 three vaccine doses, suggesting that sufficient T cell help was provided to stimulate  
311 spike-specific B cell responses despite a wide range of antigen-specific CD4<sup>+</sup> T cell  
312 frequencies. While our results do not completely rule out the possibility of age-related  
313 dysfunction in vaccine-induced T cells among older adults, our data suggest that the  
314 impact of any age-associated T cell impairment is likely to be modest after the second  
315 and third vaccine dose.

316 Our data also indicate that HLA class I alleles modulate the frequency of spike-  
317 specific CD8<sup>+</sup> T cell responses following vaccination. Notably, participants expressing  
318 HLA-A\*02:03 exhibited higher CD8<sup>+</sup> T cell responses, while individuals expressing  
319 B\*39:01, B\*44:03, or C\*07:01 exhibited lower responses (though these associations only  
320 reached statistical significance after three vaccine doses). Bioinformatics analyses  
321 predicted a higher number of spike peptides that bound with high affinity to HLA-  
322 A\*02:03 compared to the closely related A\*02:01 allele (which was not associated with a

323 better vaccine response), suggesting that A\*02:03 may elicit immunodominant responses  
324 to a broader array of vaccine-derived antigens. Several studies have reported associations  
325 between HLA genotype and COVID-19 severity or predicted COVID-19 vaccine  
326 immunogenicity<sup>29-33</sup>, which may underpin ethnicity-related differences in T cell  
327 responses that have been observed in some contexts<sup>34,35</sup>. Indeed, A\*02:03 occurs most  
328 frequently in individuals of South and East Asian ancestry, and therefore may contribute  
329 to enhanced T cell responses to COVID-19 vaccines in this population<sup>35</sup>. Additional  
330 studies are needed to examine these HLA associations in greater detail.

331         This study has some limitations. While the AIM assay provides a very sensitive  
332 method to quantify spike-specific CD4+ and CD8+ T cells, we did not analyze T cell  
333 functions such as cytokine production or proliferation that could reveal differences in the  
334 effector activity of vaccine- or infection-induced responses. Since T cell responses were  
335 measured using peptide pools, we cannot comment on the relative dominance of  
336 individual spike epitopes (or host HLAs), nor potential changes in the distribution of  
337 these responses over time. Furthermore, we examined T cell responses using only  
338 peptides spanning the ancestral spike protein, which match the vaccine antigen but may  
339 not fully account for responses elicited against SARS-CoV-2 variants following  
340 breakthrough infection. Finally, we did not assess T cell responses after the first dose of  
341 COVID-19 mRNA vaccine, when age-related differences in immune cell frequency or  
342 function may be more apparent.

343         In summary, our study provides evidence that repeated exposure to SARS-CoV-2  
344 spike antigen, either via vaccination or infection, induces steadily higher T cell  
345 frequencies in adults of all ages, at least up to 4 exposures. Importantly, our results also

346 indicate that COVID-19-naive older adults mount robust cellular immune responses after  
347 two and three doses of COVID-19 mRNA vaccine, as well as after subsequent  
348 breakthrough infection, that are comparable in magnitude to those of younger adults.  
349 These results further underscore the benefits of COVID-19 vaccination in this population.

350

351

## 352 **AUTHOR CONTRIBUTIONS**

353 ZLB and MAB led the study. HRL and YS coordinated the study. SD, RK, FM,  
354 SS, YS, RW, FY and EB processed specimens and collected data under the supervision  
355 of ZLB and MAB. SD, RL, MAB and ZLB analyzed data. MLD, DTH, JS, JSGM and  
356 MGR contributed to cohort establishment and/or SARS-CoV-2 serum antibody  
357 quantification. SD, ZLB and MAB wrote the manuscript. All authors contributed to  
358 manuscript review and editing.

359

## 360 **ACKNOWLEDGEMENTS**

361 We thank the leadership and staff of Providence Health Care, St. Paul's Hospital,  
362 the BC Centre for Excellence in HIV/AIDS, the Hope to Health Research and Innovation  
363 Centre, and Simon Fraser University for supporting this project. We also thank the  
364 participants, without whom this study would not have been possible.

365

## 366 **FUNDING STATEMENT**

367 This work was supported by the Public Health Agency of Canada through a  
368 COVID-19 Immunology Task Force COVID-19 "Hot Spots" Award (2020-HQ-000120



369 to MGR, ZLB, MAB). Additional funding was received from the Canadian Institutes for  
370 Health Research (GA2-177713 and the Coronavirus Variants Rapid Response Network  
371 (FRN-175622) to MAB), the Canada Foundation for Innovation through Exceptional  
372 Opportunities Fund – COVID-19 awards (to MAB, MLD, ZLB). FM holds a fellowship  
373 from the CIHR Canadian HIV Trials Network. FY and EB were supported by an SFU  
374 Undergraduate Research Award. MLD and ZLB hold Scholar Awards from the Michael  
375 Smith Foundation for Health Research.

**Table 1: Participant characteristics**

Characteristic	OA (n=40)	HCW (n=50)
<b>Sociodemographic and health variables<sup>a</sup></b>		
Age in years, median [IQR]	79 [73-83]	39 [32-50]
Female sex at birth, n (%)	27 (68%)	37 (74%)
Ethnicity, n (%)		
White	29 (73%)	23 (46%)
Asian	10 (25%)	22 (44%)
Other	1 (2%)	5 (10%)
Number of chronic health conditions, median [IQR] <sup>a</sup>	1 [0-2]	0 [0-1]
<b>Vaccine details</b>		
Initial regimen		
BNT162b2 - BNT162b2	32 (80%)	48 (96%)
mRNA-1273 - mRNA-1273	7 (18%)	1 (2%)
heterologous mRNA	1 (2%)	1 (2%)
Third dose		
BNT162b2	15 (38%)	25 (50%)
mRNA-1273	25 (62%)	25 (50%)
Days between first and second doses, median [IQR]	78 [45-86]	97 [91-101]
Days between second and third doses, median [IQR]	169 [160-231]	210 [199-231]
<b>Post-3rd vaccine dose SARS-CoV-2 infections, n (%)<sup>c</sup></b>	8 (20%)	16 (32%)
Days between breakthrough infection and subsequent sampling	53 [40-119]	63 [31-104]

376 <sup>a</sup>Sociodemographic, health, and vaccine data were collected by self-report and confirmed  
377 through medical records where available.

378 <sup>b</sup>Chronic conditions were defined as hypertension, diabetes, asthma, obesity, chronic diseases  
379 of lung, liver, kidney, heart or blood, cancer, and immunosuppression due to chronic  
380 conditions or medication.

381 <sup>c</sup>All SARS-CoV-2 infections occurred between one and six months after the third vaccine  
382 dose.

383

384 **FIGURE LEGENDS**

385 **Figure 1. SARS-CoV-2 spike-specific T-cell frequencies before and after COVID-19**

386 **mRNA vaccination.** *Panel A:* Spike-specific CD4<sup>+</sup> T-cell frequencies before and after  
387 two and three-dose COVID-19 vaccination. Older Adults (OA) are in orange; younger  
388 Health Care Workers (HCW) are in blue. All participants are COVID-19 naive. Red bars  
389 indicate median and IQR. The Mann-Whitney U-test was used for between-group  
390 comparisons and the Wilcoxon matched pairs test was used for longitudinal paired  
391 comparisons. P-values are not corrected for multiple comparisons. *Panel B:* Same as  
392 panel A, but for spike-specific CD8<sup>+</sup> T-cell frequencies.

393

394 **Figure 2. Correlations between cellular and humoral immune measures after two**

395 **and three-dose COVID-19 mRNA vaccination.** *Panel A:* Correlation between spike-  
396 specific CD4<sup>+</sup> and CD8<sup>+</sup> T-cell frequencies one month after the second dose (open  
397 circles) and one month after the third dose (closed circles) in the combined cohort. *Panel*  
398 *B:* Correlation between spike-specific CD4<sup>+</sup> T-cell frequencies and spike-specific IgG  
399 binding antibodies, measured in one month after the second dose (open circles) and one  
400 month after the third dose (closed circles) in the combined cohort. All participants are  
401 COVID-19 naive.

402

403 **Figure 3. Comparison of HLA-A\*02:01 and A\*02:03 predicted strong-binding**

404 **epitopes in SARS-CoV-2 spike.** *Panel A:* Cumulative frequencies of predicted strong-  
405 binding epitopes in SARS-CoV-2 spike restricted by HLA-A\*02:01 (blue line) and  
406 A\*02:03. Epitope predictions were performed using NetMHCpan4.1<sup>25</sup>, which defines

407 strong binders as those with % Ranks of 0.5 or lower. The lower the % Rank, the stronger  
408 the predicted binding. *Panel B*: Epitope binding ranks for 30 spike epitopes that were  
409 predicted to bind strongly to either A\*02:01 or A\*02:03. Epitopes that are predicted to  
410 bind more strongly to A\*02:03 are linked by green lines, with seven epitopes that were  
411 predicted to have the most substantially enhanced A\*02:03 binding listed in green next to  
412 their corresponding points. Epitopes that are predicted to bind more strongly to A\*02:01  
413 are linked by red dotted lines, with one epitope predicted to have the most substantially  
414 enhanced A\*02:01 binding listed in red next to its corresponding point. The shaded area  
415 denotes the threshold for strong binders. P-value computed using the Wilcoxon matched  
416 pairs test.

417

418 **Figure 4. SARS-CoV-2 spike-specific T-cell frequencies in a subset of participants**  
419 **who experienced their first SARS-CoV-2 infection after receiving three vaccine**  
420 **doses.** *Panel A*: Spike-specific CD4<sup>+</sup> T-cell frequencies in a subset of 8 OA (orange) and  
421 16 HCW (blue) after three-dose COVID-19 vaccination while participants were still  
422 COVID-19-naive, and after a subsequent breakthrough SARS-CoV-2 infection. The  
423 Mann-Whitney U-test was used for between-group comparisons and the Wilcoxon  
424 matched pairs test was used for longitudinal paired comparisons. P-values are not  
425 corrected for multiple comparisons. *Panel B*: Same as panel A, but for spike-specific  
426 CD8<sup>+</sup> T-cell responses.

427

428

429

## 430 REFERENCES

- 431 1. Onder G, Rezza G, Brusaferro S. Case-Fatality Rate and Characteristics of Patients  
432 Dying in Relation to COVID-19 in Italy. *JAMA* 2020; **323**(18): 1775-6.
- 433 2. Richardson S, Hirsch JS, Narasimhan M, et al. Presenting Characteristics,  
434 Comorbidities, and Outcomes Among 5700 Patients Hospitalized With COVID-19  
435 in the New York City Area. *JAMA* 2020; **323**(20): 2052-9.
- 436 3. Williamson EJ, Walker AJ, Bhaskaran K, et al. Factors associated with COVID-19-  
437 related death using OpenSAFELY. *Nature* 2020; **584**(7821): 430-6.
- 438 4. Polack FP, Thomas SJ, Kitchin N, et al. Safety and Efficacy of the BNT162b2  
439 mRNA Covid-19 Vaccine. *N Engl J Med* 2020; **383**(27): 2603-15.
- 440 5. Goronzy JJ, Li G, Yang Z, Weyand CM. The janus head of T cell aging -  
441 autoimmunity and immunodeficiency. *Front Immunol* 2013; **4**: 131.
- 442 6. Jefferson T, Rivetti D, Rivetti A, Rudin M, Di Pietrantonj C, Demicheli V. Efficacy  
443 and effectiveness of influenza vaccines in elderly people: a systematic review.  
444 *Lancet* 2005; **366**(9492): 1165-74.
- 445 7. Nichol KL, Nordin JD, Nelson DB, Mullooly JP, Hak E. Effectiveness of influenza  
446 vaccine in the community-dwelling elderly. *N Engl J Med* 2007; **357**(14): 1373-81.
- 447 8. Goronzy JJ, Weyand CM. Understanding immunosenescence to improve responses  
448 to vaccines. *Nat Immunol* 2013; **14**(5): 428-36.
- 449 9. Goronzy JJ, Weyand CM. Mechanisms underlying T cell ageing. *Nat Rev Immunol*  
450 2019; **19**(9): 573-83.
- 451 10. Andrews N, Tessier E, Stowe J, et al. Duration of Protection against Mild and Severe  
452 Disease by Covid-19 Vaccines. *N Engl J Med* 2022; **386**(4): 340-50.
- 453 11. Collier DA, Ferreira I, Kotagiri P, et al. Age-related immune response heterogeneity  
454 to SARS-CoV-2 vaccine BNT162b2. *Nature* 2021; **596**(7872): 417-22.
- 455 12. Levin EG, Lustig Y, Cohen C, et al. Waning Immune Humoral Response to  
456 BNT162b2 Covid-19 Vaccine over 6 Months. *N Engl J Med* 2021; **385**(24): e84.
- 457 13. Palacios-Pedrero MA, Jansen JM, Blume C, et al. Signs of immunosenescence  
458 correlate with poor outcome of mRNA COVID-19 vaccination in older adults. *Nat*  
459 *Aging* 2022; **2**(10): 896-905.
- 460 14. Mwimanzi F, Lapointe HR, Cheung PK, et al. Impact of age and SARS-CoV-2  
461 breakthrough infection on humoral immune responses after three doses of COVID-  
462 19 mRNA vaccine. *Open Forum Infectious Diseases* 2023; **Accepted, In Press.**

- 463 15. Mwimanzi F, Lapointe HR, Cheung PK, et al. Older Adults Mount Less Durable  
464 Humoral Responses to Two Doses of COVID-19 mRNA Vaccine but Strong Initial  
465 Responses to a Third Dose. *J Infect Dis* 2022; **226**(6): 983-94.
- 466 16. US Food and Drug Administration. FDA Authorizes Booster Dose of Pfizer-  
467 BioNTech COVID-19 Vaccine for Certain Populations. [fda.gov](https://www.fda.gov); 2021.
- 468 17. Bowman E. A CDC Panel Backs Booster Shots For Older Adults, A Step Toward  
469 Making Them Available. ‘National Public Radio, USA. 2021 23 Sept 2021.
- 470 18. Moss P. The T cell immune response against SARS-CoV-2. *Nat Immunol* 2022;  
471 **23**(2): 186-93.
- 472 19. Painter MM, Mathew D, Goel RR, et al. Rapid induction of antigen-specific CD4(+)  
473 T cells is associated with coordinated humoral and cellular immunity to SARS-CoV-  
474 2 mRNA vaccination. *Immunity* 2021; **54**(9): 2133-42 e3.
- 475 20. Sahin U, Muik A, Derhovanessian E, et al. COVID-19 vaccine BNT162b1 elicits  
476 human antibody and T(H)1 T cell responses. *Nature* 2020; **586**(7830): 594-9.
- 477 21. Jo N, Hidaka Y, Kikuchi O, et al. Impaired CD4(+) T cell response in older adults is  
478 associated with reduced immunogenicity and reactogenicity of mRNA COVID-19  
479 vaccination. *Nat Aging* 2023; **3**(1): 82-92.
- 480 22. Brockman MA, Mwimanzi F, Lapointe HR, et al. Reduced Magnitude and  
481 Durability of Humoral Immune Responses to COVID-19 mRNA Vaccines Among  
482 Older Adults. *J Infect Dis* 2022; **225**(7): 1129-40.
- 483 23. Brumme ZL, Brumme CJ, Chui C, et al. Effects of human leukocyte antigen class I  
484 genetic parameters on clinical outcomes and survival after initiation of highly active  
485 antiretroviral therapy. *J Infect Dis* 2007; **195**(11): 1694-704.
- 486 24. Woods CK, Brumme CJ, Liu TF, et al. Automating HIV drug resistance genotyping  
487 with RECall, a freely accessible sequence analysis tool. *J Clin Microbiol* 2012;  
488 **50**(6): 1936-42.
- 489 25. Reynisson B, Alvarez B, Paul S, Peters B, Nielsen M. NetMHCpan-4.1 and  
490 NetMHCIipan-4.0: improved predictions of MHC antigen presentation by  
491 concurrent motif deconvolution and integration of MS MHC eluted ligand data.  
492 *Nucleic Acids Res* 2020; **48**(W1): W449-W54.
- 493 26. Storey JD, Tibshirani R. Statistical significance for genomewide studies. *Proc Natl*  
494 *Acad Sci U S A* 2003; **100**(16): 9440-5.
- 495 27. BC Centre for Disease Control. Weekly update on Variants of Concern. 2022.  
496 <http://www.bccdc.ca/health-info/diseases-conditions/covid-19/data>.

- 497 28. Muller L, Andree M, Moskorz W, et al. Age-dependent Immune Response to the  
498 Biontech/Pfizer BNT162b2 Coronavirus Disease 2019 Vaccination. *Clin Infect Dis*  
499 2021; **73**(11): 2065-72.
- 500 29. Bose T, Pant N, Pinna NK, Bhar S, Dutta A, Mande SS. Does immune recognition  
501 of SARS-CoV2 epitopes vary between different ethnic groups? *Virus Res* 2021; **305**:  
502 198579.
- 503 30. Rao V, Chandra N. In-silico study of influence of HLA heterogeneity on CTL  
504 responses across ethnicities to SARS-CoV-2. *Hum Immunol* 2022; **83**(12): 797-802.
- 505 31. Bertinetto FE, Magistrini P, Mazzola GA, et al. The humoral and cellular response  
506 to mRNA SARS-CoV-2 vaccine is influenced by HLA polymorphisms. *HLA* 2023.
- 507 32. Srivastava A, Hollenbach JA. The immunogenetics of COVID-19. *Immunogenetics*  
508 2023; **75**(3): 309-20.
- 509 33. Sacco K, Castagnoli R, Vakkilainen S, et al. Immunopathological signatures in  
510 multisystem inflammatory syndrome in children and pediatric COVID-19. *Nat Med*  
511 2022; **28**(5): 1050-62.
- 512 34. Smith M, Abdesselem HB, Mullins M, et al. Age, Disease Severity and Ethnicity  
513 Influence Humoral Responses in a Multi-Ethnic COVID-19 Cohort. *Viruses* 2021;  
514 **13**(5).
- 515 35. Martin CA, Nazareth J, Jarkhi A, et al. Ethnic differences in cellular and humoral  
516 immune responses to SARS-CoV-2 vaccination in UK healthcare workers: a cross-  
517 sectional analysis. *EClinicalMedicine* 2023; **58**: 101926.  
518

Figure 1

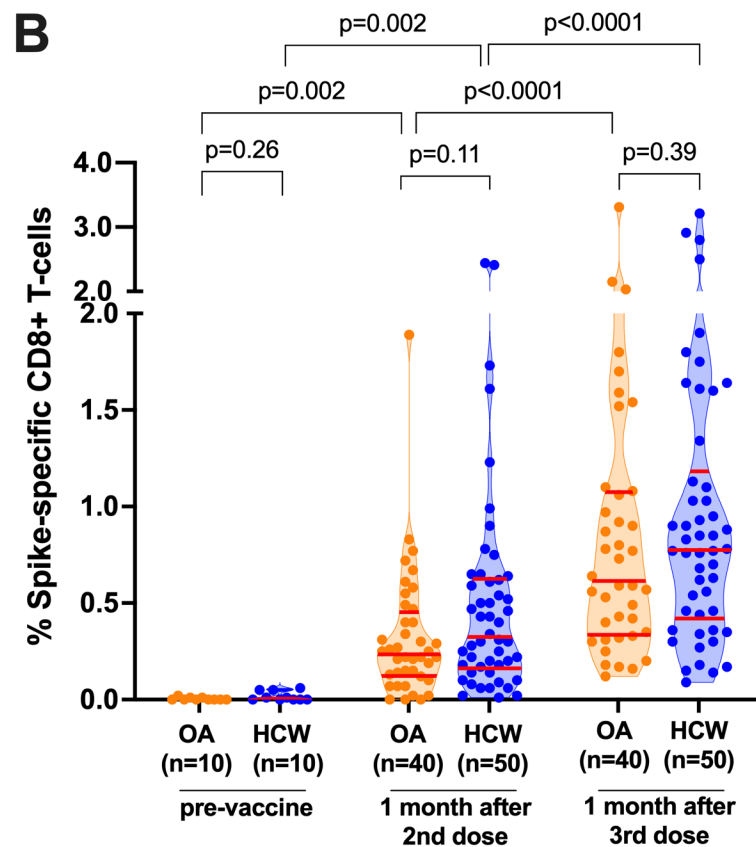
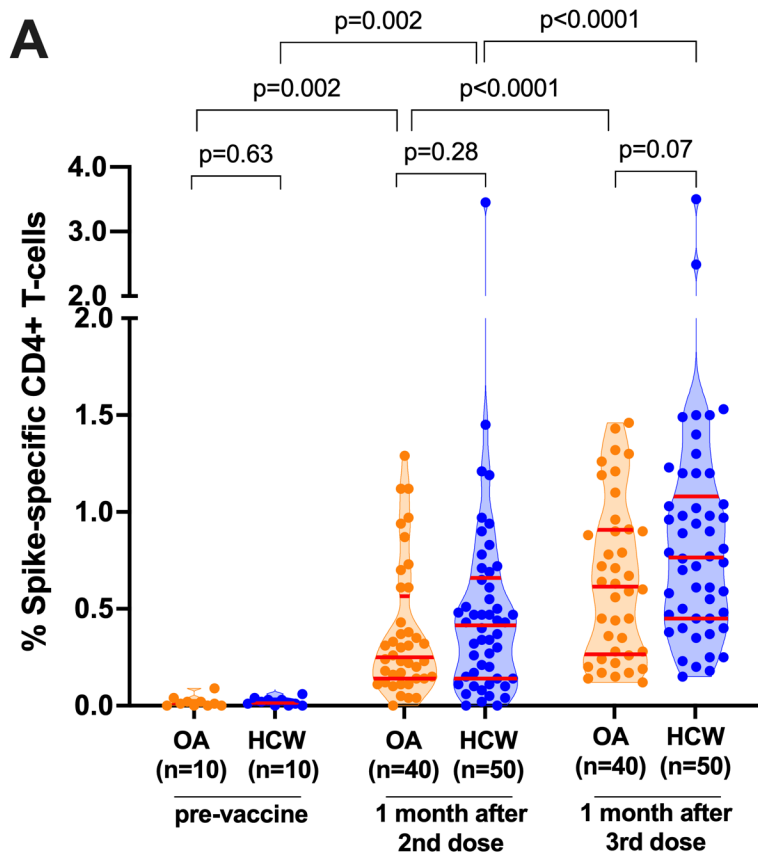




Figure 2

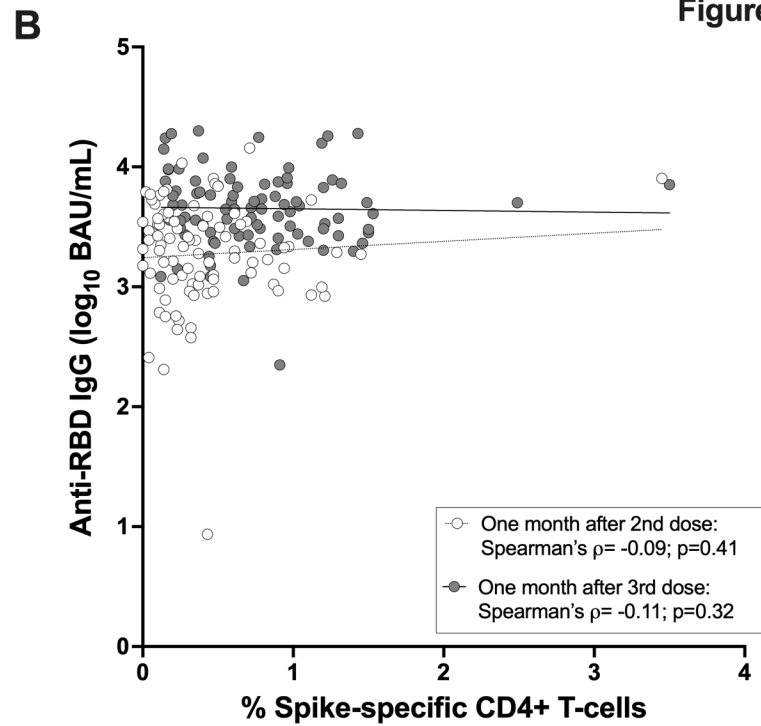
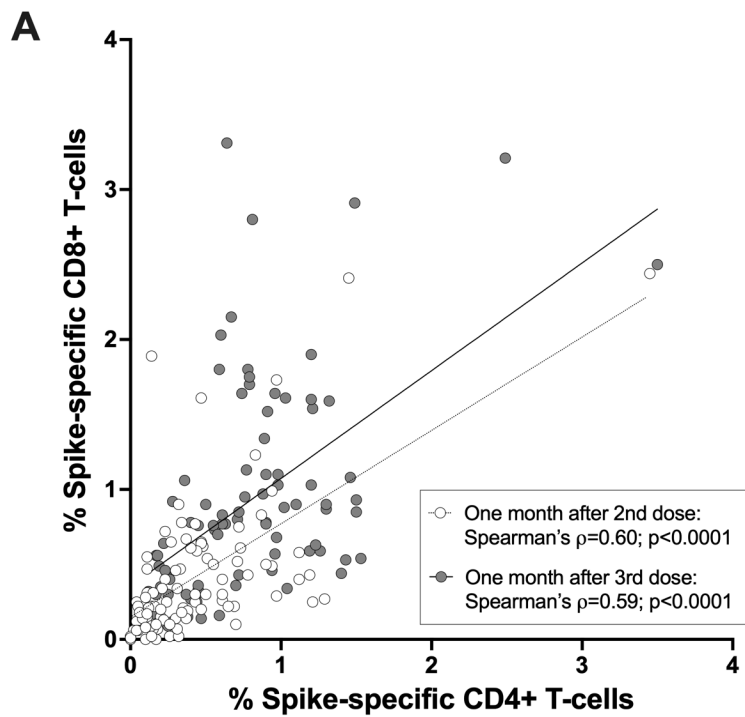
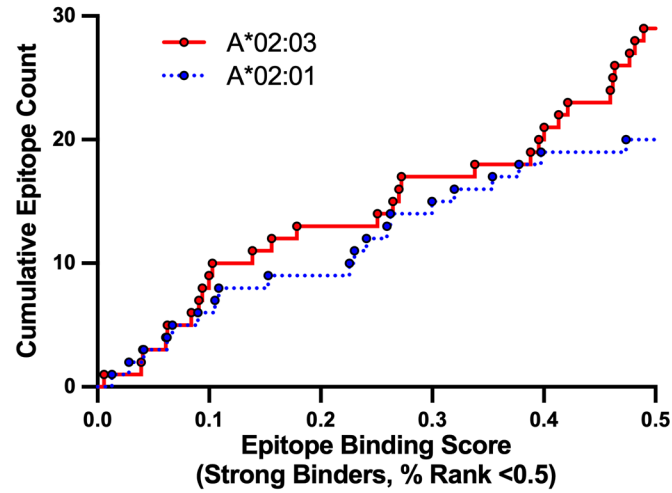


Figure 3

A



B

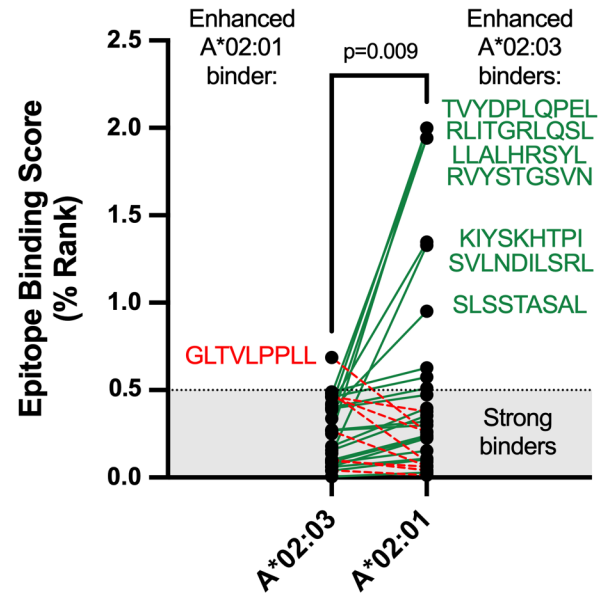


Figure 4

