

1 **Early Biological Markers of Post-Acute Sequelae of SARS-CoV-2 Infection**

2 **Onset Sentence Summary:** Early viral dynamics and the associated host immune responses
3 play a role in the pathogenesis of PASC.

4 **Authors:** Scott Lu^{1,2*}, Michael J. Peluso^{3*}, David V. Glidden², Michelle C. Davidson⁴, Kara
5 Lugtu¹, Jesus Pineda-Ramirez¹, Michel Tassetto⁵, Miguel Garcia-Knight⁵, Amethyst Zhang⁵,
6 Sarah A. Goldberg², Jessica Y. Chen², Maya Fortes-Cobby¹, Sara Park¹, Ana Martinez¹,
7 Matthew So¹, Aidan Donovan³, Badri Viswanathan², Rebecca Hoh,³ Kevin Donohue⁴, David R.
8 McIlwain⁹, Brice Gaudiliere⁹, Khamal Anglin¹, Brandon C. Yee⁶, Ahmed Chenna⁶, John W.
9 Winslow⁶, Christos Petropoulos⁶, Steven G. Deeks³, Melissa Briggs-Hagen⁷, Raul Andino⁵,
10 Claire M. Midgley⁷, Jeffrey N. Martin², Sharon Saydah^{7*}, J. Daniel Kelly^{1,2,4,8*}

11 *Indicates equal contribution

12 **Affiliations:**

13 1 Institute for Global Health Sciences, University of California, San Francisco (UCSF), San
14 Francisco, CA, USA;

15 2 Department of Epidemiology and Biostatistics, UCSF, San Francisco, CA, USA;

16 3 Division of HIV, Infectious Diseases, and Global Medicine, UCSF, San Francisco, CA, USA;

17 4 School of Medicine, UCSF, San Francisco, CA, USA;

18 5 Department of Microbiology and Immunology, UCSF, San Francisco, CA, USA;

19 6 Labcorp - Monogram Biosciences, South San Francisco, CA, USA;

20 7 Division of Respiratory Viral Pathogens, CDC;

21 8 F.I. Proctor Foundation, UCSF, San Francisco, CA, USA;

22 9 Department of Microbiology and Immunology, Stanford, CA, USA.

23 Word count:

24 “The findings and conclusions in this report are those of the authors and do not necessarily
25 represent the official position of the Centers for Disease Control and Prevention”

26

27 **Abstract:** To understand the roles of acute phase viral dynamics and host immune responses
28 in PASC, we enrolled 136 participants within 5 days of their first positive SARS-CoV-2 real-time
29 PCR. Participants self-collected nasal specimens up to 21 times within the first 28 days after
30 symptom onset; Interviewer-administered clinical questionnaires and blood samples were
31 collected at enrollment and days 9, 14, 21, 28, and month 4 and 8 post-symptom. Defining
32 PASC as the presence of any symptom new or worse since infection reported at their 4-month
33 visit, we compared viral markers (quantity and duration of viral RNA load, infectious viral load,
34 and plasma N-antigen level) and host immune markers (IL-6, IL-10, TNF- α , IFN- α , IFN- γ , MCP,
35 IP-10, and Spike IgG) over the acute period. In comparison to those who fully recovered, those
36 who developed PASC demonstrated significantly higher maximum levels of SARS-CoV-2 RNA,
37 infectious virus, and N-antigen, longer duration of viral shedding, and lower Spike-specific IgG
38 levels within the first 10 days of the acute phase of illness. No significant differences were
39 identified among a panel of host immune markers, though there was a trend toward higher initial
40 levels of certain markers (e.g., MCP-1, IFN- α , and IFN- γ) in those who went on to develop
41 PASC. Early viral dynamics and the associated host immune responses play a role in the
42 pathogenesis of PASC. These findings highlight the importance of understanding the early
43 biological markers from acute SARS-CoV-2 infection in the natural history of PASC.

44 **Introduction**

45 Post-acute sequelae of SARS-CoV-2 infection (PASC) includes ongoing symptoms in the
46 months following acute SARS-CoV-2 infection. Estimates of the occurrence of PASC can vary,
47 currently approximately 1 in 10 U.S. adults who have had COVID-19 reporting ongoing
48 symptoms (1). Despite a growing understanding of its epidemiology and natural history, the
49 pathogenesis of PASC remains incompletely understood (2). Multiple mechanisms that could
50 contribute to this condition are now under investigation (2, 3).

51 Viral antigen persistence and immune dysregulation are two mechanisms that might drive PASC
52 (4-9). For example, recent work has suggested that a high proportion of individuals with PASC
53 demonstrate detectable SARS-CoV-2 antigen in blood plasma during the post-acute phase (4,
54 6), and subgenomic RNA has been identified in widespread tissue sites at autopsy for up to 6
55 months post-COVID (5). Furthermore, studies comparing individuals with PASC with those who
56 report complete recovery from SARS-CoV-2 infection have demonstrated increased levels of
57 certain inflammatory markers including IL-6, TNF-alpha, and IL-1B, among others, for at least a
58 year following infection (7-9). However, most work on PASC to date has been limited to the
59 study of biological samples collected during the post-acute phase of infection.

60 Biological samples for predictors of PASC from the acute and early post-acute phase are more
61 limited. Most studies from early infection have focused on shorter-term outcomes in hospitalized
62 individuals (10, 11), although more recently some studies have suggested that prolonged viral
63 clearance (12) or distinct early immune signatures (13) could be associated with PASC. While
64 informative, these studies have been limited by relatively small study populations and/or less
65 frequent biospecimen collection timepoints.

66 Here, we leveraged a household-based cohort of individuals intensively sampled during the
67 acute phase of SARS-CoV-2 infection to assess the early biological determinants of PASC. We

68 hypothesized that selected biological marker activity during early infection play a role in the
69 pathogenesis of persistent symptomatology following the acute period of illness.

70 **Methods**

71 Study Population and Procedures

72 This was a longitudinal cohort study enrolling individuals acutely infected with SARS-CoV-2 and
73 their household contacts in the San Francisco Bay area between September 2020 and May
74 2022. Details on the protocol and procedures for enrollment have been described in detail
75 elsewhere (14). In brief, we enrolled participants who were recently diagnosed with nucleic acid-
76 confirmed SARS-CoV-2 infection within 5 days of symptom onset. Molecular testing results from
77 UCSF-affiliated sites were used by research staff to screen and recruit participants via in-person
78 and telephone interviews. A study field team visited participants in their areas of isolation a total
79 of 5 times during acute infection at the following timepoints: day of enrollment (ranging between
80 day 0 and day 5 following self-reported symptom onset), and day 9, 14, 21, and 28 following
81 symptom onset. At each study visit, blood and nasal specimens were collected. In addition,
82 participants self-collected swabs of the anterior nares for the first 14 days post-infection, and at
83 d17, 19, 21, and 28. Research coordinators administered phone interviews on the same day as
84 the field visit within the acute period, then at 4 and 8 (+/- 2 months) months post-infection, using
85 identical instruments developed in conjunction with a study of the post-acute phase (15).

86 Measurements

87 *Survey-based*

88 We piloted a questionnaire containing items with key sociodemographic, medical history,
89 symptomatology, quality-of-life, and later vaccination information. This instrument was
90 developed with infectious disease specialists and epidemiologists who had managed COVID-19
91 patients. The form was iteratively developed over time and continues to be developed during
92 the present study. Symptom items included a checklist of 32 selected symptoms followed by a

93 free response option. The surveys are designed to assess symptom status from the time of the
94 last interview to the current one. All symptoms reported as new, worsened or persistent since
95 SARS-CoV-2 infection were captured; presence of symptoms prior to acute COVID-19 illness
96 were assessed for exclusion from later analyses. Comorbid conditions include history of
97 autoimmune disease, cancer, diabetes, HIV/AIDS, heart disease, hypertension, lung disease,
98 and kidney disease.

99 The primary outcome of PASC was defined by the presence of any symptom reported between
100 2 to 6 months after initial illness. For participants whose first follow-up visit occurred beyond 6
101 months after initial illness, we analyzed symptom presence within the 2-6m PASC
102 ascertainment window.

103 Information on the type and number of SARS-CoV-2 vaccinations were collected at baseline
104 and updated with each interview. Fully vaccinated participants were defined as having received
105 a complete primary vaccine series at least 14 days prior to study enrollment.

106 *Virology*

107 Details of sample collection, RNA extraction, and assay methodology have been reported
108 previously (16). In short, acute viral RNA levels in nasal specimens were assessed using
109 quantitative real time reverse transcription polymerase chain reaction (PCR) using the
110 KingFisher platform to target nucleocapsid (N) and envelope (E) gene regions. A SARS-CoV-2
111 RNA-positive result was defined as having any level of RNA-positivity in N and E gene regions.
112 Presence of infectious virus (infectivity) was measured via cytopathic effect (CPE) in Vero-
113 hACE2-TMPRSS2 cells. Infectious viral titers were assessed using conventional plaque assay.
114 All samples were tested by the same two researchers (MGK and MT).

115 Collected blood specimens were also used to measure nucleocapsid antigen (N-Ag) at all
116 available time points.

117 *Host immune factors*

118 Plasma biomarker measurements were performed using the automated HD-X Simoa platform.
119 Analytes included plasma SARS-CoV-2 Spike receptor binding domain (RBD) IgG and the
120 following inflammatory markers: IL-6, IL-10, TNF- α , IFN- α , IFN- γ , IP-10, and MCP-1.

121 All assays were performed according to the manufacturer's instructions and assay performance
122 was consistent with the manufacturer's specifications.

123

124 Statistical Analysis

125 We describe distribution of virologic and host immune factors at baseline and through follow-up
126 among those with PASC compared to those without PASC. Virologic factors included the
127 following:

- 128 • RNA viral load over time
- 129 • Maximum RNA load
- 130 • Duration of RNA detection (defined as days from illness onset to last positive PCR)
- 131 • RNA decay rates (defined as linear rate of RNA decline from maximum RNA load)
- 132 • Infectious viral titer on day of max RNA
- 133 • Duration of detection of culturable virus (defined at days from illness onset to last
134 positive CPE)
- 135 • N antigen levels
- 136 • N antigen decay rates (defined as linear rate of N antigen decline).

137 Non-infectious and infectious viral shedding and viral load from PCR of nasal specimens were
138 compared using logistic regression followed by marginal effects to calculate adjusted risk ratios
139 (aRR) (17). Subgroup analyses were conducted on participants with available blood specimens
140 and included N antigen and host immune factors. Missing data among the subgroup was
141 assessed and managed using multivariate imputation by chained equations (18). After
142 imputation, we fit linear models using generalized estimating equations with a working
143 independence correlation matrix, identity linkage, and Gaussian distribution using terms for
144 PASC, time period, and interaction between them. The distribution and magnitude of difference
145 of each analyte are summarized graphically.

146 Given the nonlinear presentation of viral load and antibody results we opted to log transform
147 results for comparison. For antibody analysis we further restricted our model to unvaccinated
148 participants in order to compare antibody responses. Study data was captured using REDCap
149 electronic data capture tools. All estimates were calculated using Stata (version 16.1;
150 StataCorp, College Station, TX).

151 Human Subjects

152 The study was reviewed by the University of California, San Francisco (UCSF) Institutional
153 Review Board and given a designation of public health surveillance according to federal
154 regulations as summarized in 45 CFR 46.102(d)(1)(2). Informed consent was obtained from all
155 participants. This activity was reviewed by CDC and was conducted consistent with applicable
156 federal law and CDC policy*

157

158 *see e.g., 45 C.F.R. part 46.102(l)(2), 21 C.F.R. part 56; 42 U.S.C. §241(d); 5 U.S.C. §552a; 44 U.S.C. §3501
159 et seq..

160 **Results**

161 Study participants

162 From September 2020 to May 2022, we enrolled 136 SARS-CoV-2 infected participants during
163 the acute phase of their illness. Among these participants, 104 completed at least one post-
164 acute visit and contributed at least one nasal sample for infectious viral and RNA testing (87%
165 of participants with 10 or more nasal specimens). These participants were all enrolled during
166 their first confirmed case of COVID-19. Among these 104, 80 participants also contributed
167 blood for viral N-antigen and inflammatory marker testing.

168 Participants had a median age of 35.5 years (IQR: 27 to 44), and the cohort was diverse in
169 terms of sex and race and ethnicity (Table 1). Participants were generally healthy and most
170 (77%) did not report pre-existing comorbid medical conditions; the most common comorbidities
171 were lung disease (14%), hypertension (10%), and diabetes (5%). The majority of participants
172 (93%) were infected with pre-Omicron strains of SARS-CoV-2 and most (65%) had not received
173 a SARS-CoV-2 vaccine prior to their infection. Over the course of their acute illness, 96 of 104
174 (92%) participants reported presence of at least one symptom with a median of 9 symptoms
175 (IQR: 4 to 13). The most common acute symptoms were fatigue (76%), cough (71%), rhinorrhea
176 (71%), headache (54%), and sore throat (46%). See Supplemental Table 1 for characteristics of
177 the subgroup of participants who had viral N-antigen and cytokine testing. Participants had
178 similar characteristics as those in the overall cohort, except that all participants in the subgroup
179 were infected with a pre-Omicron variant.

180 Description of PASC

181 Among 104 SARS-CoV-2 infected participants with a post-acute follow-up visit, 31 (30%)
182 reported new, worsened or persistent symptoms since the time of SARS-CoV-2 infection,

183 consistent with PASC. We did not identify a difference between those with and without PASC in
184 terms of vaccination status (31% vs 36%). All participants with PASC had been symptomatic
185 during acute illness with a median of 12 (9 to 14); among those without PASC the median
186 number of symptoms in the acute period was 7 (3 to 12).

187 Those meeting criteria for PASC reported a median of 2 (IQR: 1 to 6) symptoms during the post-
188 acute period 2-6 months after SARS-CoV-2 infection. The most commonly reported PASC
189 symptoms were fatigue (32%), difficulty with concentration/memory (33%), rhinorrhea (29%),
190 cough (29%), and headache (26%).

191 Associations of virologic factors with PASC

192 We compared the magnitude, decay rates and duration of RNA and infectious viral shedding
193 and N-antigen levels between participants who did and did not develop PASC (**Table 2**).
194 Compared to those who did not develop PASC, those who developed PASC had higher
195 maximum RNA viral load, infectious viral load, and N-antigen levels (**Table 2; Figure 2a**). Viral
196 RNA decay rates did not significantly differ by PASC status, but decay rates of N-antigen levels
197 were faster in the first 9 days after symptom onset among those with PASC than those without
198 PASC (**Figure 2a**).

199 The development of PASC was associated with a higher proportion of RNA positivity ($p = 0.01$)
200 and infectious viral shedding ($p = 0.02$; Figure 3). Furthermore, participants who went on to
201 develop PASC had a higher median number of days of RNA and infectious viral shedding
202 compared with those who did not develop PASC, though these differences did not reach
203 statistical significance (**Table 2**).

204 Associations of immune responses with PASC

205 As expected, anti-RBD IgG levels among unvaccinated participants climbed over the 28-day
206 observation period. Notably, those who developed PASC exhibited lower levels of Spike IgG at
207 day 5 ($p=0.03$) and day 9 ($p=0.03$) post-symptom onset compared to those who did not develop
208 PASC (**Figure 2b**). These differences attenuated after day 14 and both groups had similar
209 Spike IgG levels by day 28.

210 The trajectories of inflammatory biomarkers markers followed expected declining trends during
211 the first 28 days following symptom onset (**Figure 4**). Those who developed PASC had non-
212 significant trends toward higher initial levels of MCP, IFN- α , and IFN- γ that attenuated over the
213 observation period. Overall, there were no strong associations between starting levels or
214 trajectories of inflammatory markers during the acute phase and the later development of
215 PASC.

216 Discussion

217 In this household-based cohort of outpatients followed prospectively from the time of SARS-
218 CoV-2 symptom onset through the post-acute period, we identified several early biologic
219 determinants of PASC. Specifically, we found a relationship between early viral dynamics,
220 adaptive immune responses, and the later development of PASC. These findings suggest that
221 an individual's ability to control viral replication and ongoing viral persistence may play an
222 important role in recovery from SARS-CoV-2 infection, and that the dynamics of the immune
223 responses during the acute and early post-acute phase may determine who goes on to
224 experience post-acute symptoms. Our observations also provide additional rationale for the
225 evaluation of early antiviral therapy as one potential target for mitigating the development of
226 PASC.

227 The etiology of PASC remains incompletely understood and there are no specific treatments
228 available beyond symptom management. To date, most biological assessments of PASC have
229 focused on the post-acute phase of infection (4, 6-9, 19-25). Only a few studies have assessed
230 the relationship between biomarkers in the acute phase of SARS-CoV-2 infection and the later
231 development of PASC (12, 13, 26). Such efforts have identified the presence of SARS-CoV-2
232 RNA in blood at the time of diagnosis (26) and prolonged duration of viral shedding from the
233 upper respiratory tract (12) as correlates of PASC. Overall, these efforts to understand the
234 relationship between acute phase biology and post-acute symptomatology have been limited by
235 the considerable challenges related to collecting specimens during the earliest days following
236 COVID-19 symptom onset, and as a result many studies have been limited to individuals
237 hospitalized with COVID-19, who are not representative of most individuals experiencing PASC.

238 Using orthogonal virologic assessments, we observed a relationship between the early viral
239 burden and the development of PASC. Those who went on to develop PASC had higher

240 maximum levels of SARS-CoV-2 RNA, infectious virus, and viral N-antigen protein during acute
241 infection, and demonstrated more rapid decay of N-antigen levels during the first 9 days after
242 symptom onset, suggesting that either higher antigen burden or a more robust immune
243 response in response to that burden are related to the later development of PASC. Furthermore,
244 we found that those who later developed PASC exhibited more prolonged shedding of infectious
245 virus and had a less robust humoral immune response in the first 9 days following infection,
246 potentially related to more sluggish viral clearance. Taken together, these findings suggest that
247 the total amount of virus present, the immunologic response that results in control of that virus,
248 and the efficiency of clearing infectious virus might all drive the development of post-acute
249 symptoms.

250 A number of demographic and clinical risk factors for PASC have been identified. While prior
251 SARS-CoV-2 vaccination appears to be protective against the development of PASC (27), it
252 remains unclear whether antiviral treatment during the acute phase of illness might reduce the
253 incidence of this condition. Two studies suggest a benefit among those meeting criteria for
254 antiviral therapy (28, 29), but other evaluations have not shown an effect (30, 31). Our findings
255 suggest that interventions that alter the magnitude or duration of infectious virus and the
256 associated immune response during the acute phase might have the potential to affect the
257 development of PASC. These might include antivirals (e.g., protease or RNA polymerase
258 inhibitors) to reduce viral replication and/or monoclonal antibodies or therapeutic vaccination to
259 enhance the immune response needed to neutralize the virus. Assessment of the impact of
260 these interventions during the acute phase of infection is warranted, although we note that most
261 of the cohort included in this analysis was enrolled prior to the availability of SARS-CoV-2
262 vaccines and that preexisting immunity related to prior vaccination or infection might alter these
263 mechanisms.

264 Acute COVID-19 is a highly inflammatory condition (10, 11). While prior cross-sectional and
265 longitudinal analyses in the post-acute phase have demonstrated that PASC is associated with
266 differences in markers of immune activation (7-9, 19, 21, 26), we did not identify significant
267 differences in levels of these markers during the acute phase between those who did and did
268 not go on to develop PASC. There are several possible explanations for this. First, our cohort
269 was likely to be more homogeneous in terms of disease severity, with a lower proportion of
270 those with severe enough acute illness to be unable to complete the study's arduous
271 questionnaire and specimen collection schedule and none who were hospitalized, than those
272 included in other studies. Second, the number of individuals developing PASC was relatively
273 small, limiting our statistical power to observe clear differences even when trends were present.
274 Third, it is possible that these differences develop over time during the post-acute phase, in
275 response to ongoing immunologic activity, and for that reason may not be present during the
276 acute and early post-acute timepoints in this analysis.

277 Strengths of our study include the high degree of adherence to the biospecimen collection
278 protocol and the collection of biospecimens in close proximity to initial symptom onset in a
279 cohort of outpatients, who comprise the vast majority of individuals with PASC. The inclusion of
280 a large proportion of individuals from earlier waves of the pandemic, prior to the widespread
281 availability of vaccination, SARS-CoV-2 treatment, or reinfection allowed us to study the natural
282 history of this condition in the absence of these confounding factors. However, this analysis has
283 several limitations. First, due to relatively small cohort size, we were unable to evaluate
284 whether early markers were associated with specific symptomatic phenotypes of PASC, each of
285 which may be driven by different biology. Second, we defined PASC as the presence of any
286 symptom new or worse since SARS-CoV-2 infection present during the post-acute period,
287 without requiring that the same symptom be present during the acute period; it is possible that
288 this could result in misattribution of some unrelated symptoms to SARS-CoV-2 infection. This is

289 mitigated somewhat by specific training for study staff to interrogate for presence of any
290 reported symptom prior to SARS-CoV-2 infection. Third, we applied a relatively broad time
291 window in which PASC could be defined (2 to 6 months), which although consistent with
292 accepted case definitions might be subject to variability by time since infection (either waxing
293 and waning or resolving symptoms). Future assessment of individuals during later timepoints
294 (e.g., 6 months or beyond) following infection may be warranted. Fourth, the current analysis
295 focuses on the binary presence or absence of symptoms and does not include consideration of
296 symptom severity or impact. Such assessment could lead to further insight into whether different
297 viral titers and immune responses can impact the severity of symptoms rather than simply their
298 presence or absence. Finally, although mitigated through use of multiple imputation, missing
299 data from declined blood sample collection could be a source of error.

300 In summary, viral load and timing of antibody development may be important factors in the
301 pathogenesis of PASC. These early biological markers may be part of a larger cascade of
302 events during the earliest days of SARS-CoV-2 infection that warrant consideration in the larger
303 efforts to develop a mechanistic understanding of this condition. Further research during the
304 acute phase of SARS-CoV-2 infection is required to elucidate causal mechanisms of PASC,
305 which can eventually lead to the development of therapeutics to prevent or treat this condition.

306 **References and Notes**

- 307 1. Bureau NCfHSUSC. Household Pulse Survey, 2022–2023. Long COVID. 2023
308 [Available from: <https://www.cdc.gov/nchs/covid19/pulse/long-covid.htm>.
309 2. Peluso MJ, Deeks SG. Early clues regarding the pathogenesis of long-COVID. Trends
310 Immunol. 2022;43(4):268-70.
311 3. Davis HE, McCorkell L, Vogel JM, Topol EJ. Long COVID: major findings, mechanisms
312 and recommendations. Nat Rev Microbiol. 2023:1-14.
313 4. Swank Z, Senussi Y, Manickas-Hill Z, Yu XG, Li JZ, Alter G, et al. Persistent circulating
314 SARS-CoV-2 spike is associated with post-acute COVID-19 sequelae. Clin Infect Dis. 2022.
315 5. Stein SR, Ramelli SC, Grazioli A, Chung J-Y, Singh M, Yinda CK, et al. SARS-CoV-2
316 infection and persistence in the human body and brain at autopsy. Nature. 2022;612(7941):758-
317 63.
318 6. Peluso MJ, Deeks SG, Mustapic M, Kapogiannis D, Henrich TJ, Lu S, et al. SARS-CoV-
319 2 and Mitochondrial Proteins in Neural-Derived Exosomes of COVID-19. Ann Neurol. 2022.
320 7. Peluso MJ, Lu S, Tang AF, Durstenfeld MS, Ho H-E, Goldberg SA, et al. Markers of
321 Immune Activation and Inflammation in Individuals With Postacute Sequelae of Severe Acute
322 Respiratory Syndrome Coronavirus 2 Infection. J Infect Dis. 2021.
323 8. Phetsouphanh C, Darley DR, Wilson DB, Howe A, Munier CML, Patel SK, et al.
324 Immunological dysfunction persists for 8 months following initial mild-to-moderate SARS-CoV-2
325 infection. Nat Immunol. 2022:1-7.
326 9. Schultheiß C, Willscher E, Paschold L, Gottschick C, Klee B, Henkes S-S, et al. The IL-
327 1β, IL-6, and TNF cytokine triad is associated with post-acute sequelae of COVID-19. Cell Rep
328 Med. 2022;3(6):100663.
329 10. Lucas C, Wong P, Klein J, Castro TBR, Silva J, Sundaram M, et al. Longitudinal
330 analyses reveal immunological misfiring in severe COVID-19. Nature. 2020;584(7821):463-9.
331 11. Del Valle DM, Kim-Schulze S, Huang H-H, Beckmann ND, Nirenberg S, Wang B, et al.
332 An inflammatory cytokine signature predicts COVID-19 severity and survival. Nat Med.
333 2020;26(10):1636-43.
334 12. Antar AAR, Yu T, Demko ZO, Hu C, Tornheim JA, Blair PW, et al. Long COVID brain fog
335 and muscle pain are associated with longer time to clearance of SARS-CoV-2 RNA from the
336 upper respiratory tract during acute infection. medRxiv. 2023.
337 13. Thompson RC, Simons NW, Wilkins L, Cheng E, Del Valle DM, Hoffman GE, et al.
338 Molecular states during acute COVID-19 reveal distinct etiologies of long-term sequelae. Nat
339 Med. 2022:1-11.
340 14. Kelly JD, Lu S, Anglin K, Garcia-Knight M, Pineda-Ramirez J, Goldberg SA, et al.
341 Magnitude and Determinants of Severe Acute Respiratory Syndrome Coronavirus 2 (SARS-
342 CoV-2) Household Transmission: A Longitudinal Cohort Study. Clin Infect Dis. 2022;75(Suppl
343 2):S193-S204.
344 15. Peluso MJ, Kelly JD, Lu S, Goldberg SA, Davidson MC, Mathur S, et al. Persistence,
345 Magnitude, and Patterns of Postacute Symptoms and Quality of Life Following Onset of SARS-
346 CoV-2 Infection: Cohort Description and Approaches for Measurement. Open Forum Infect Dis.
347 2022;9(2):ofab640.
348 16. Garcia-Knight M, Anglin K, Tassetto M, Lu S, Zhang A, Goldberg SA, et al. Infectious
349 viral shedding of SARS-CoV-2 Delta following vaccination: A longitudinal cohort study. PLoS
350 Pathog. 2022;18(9):e1010802.
351 17. Norton EC, Miller MM, Kleinman LC. Computing Adjusted Risk Ratios and Risk
352 Differences in Stata. The Stata Journal. 2013;13(3):492-509.
353 18. White IR, Royston P, Wood AM. Multiple imputation using chained equations: Issues
354 and guidance for practice. Statistics in Medicine. 2011;30(4):377-99.

- 355 19. Peluso MJ, Sans HM, Forman CA, Nylander AN, Ho H-E, Lu S, et al. Plasma Markers of
356 Neurologic Injury and Inflammation in People With Self-Reported Neurologic Postacute
357 Sequelae of SARS-CoV-2 Infection. *Neurol Neuroimmunol Neuroinflamm*. 2022;9(5).
- 358 20. Durstenfeld MS, Peluso MJ, Kelly JD, Win S, Swaminathan S, Li D, et al. Role of
359 antibodies, inflammatory markers, and echocardiographic findings in postacute cardiopulmonary
360 symptoms after SARS-CoV-2 infection. *JCI Insight*. 2022;7(10).
- 361 21. Klein J, Wood J, Jaycox J, Lu P, Dhodapkar RM, Gehlhausen JR, et al. Distinguishing
362 features of Long COVID identified through immune profiling. *medRxiv*. 2022.
- 363 22. Son K, Jamil R, Chowdhury A, Mukherjee M, Venegas C, Miyasaki K, et al. Circulating
364 anti-nuclear autoantibodies in COVID-19 survivors predict long-COVID symptoms. *Eur Respir J*.
365 2022.
- 366 23. Jia X, Cao S, Lee AS, Manohar M, Sindher SB, Ahuja N, et al. Anti-nucleocapsid
367 antibody levels and pulmonary comorbid conditions are linked to post-COVID-19 syndrome. *JCI*
368 *Insight*. 2022;7(13).
- 369 24. Giron LB, Peluso MJ, Ding J, Kenny G, Zilberstein NF, Koshy J, et al. Markers of fungal
370 translocation are elevated during post-acute sequelae of SARS-CoV-2 and induce NF- κ B
371 signaling. *JCI Insight*. 2022;7(18).
- 372 25. Pretorius E, Venter C, Laubscher GJ, Kotze MJ, Oladejo SO, Watson LR, et al.
373 Prevalence of symptoms, comorbidities, fibrin amyloid microclots and platelet pathology in
374 individuals with Long COVID/Post-Acute Sequelae of COVID-19 (PASC). *Cardiovasc Diabetol*.
375 2022;21(1):148.
- 376 26. Su Y, Yuan D, Chen DG, Ng RH, Wang K, Choi J, et al. Multiple Early Factors Anticipate
377 Post-Acute COVID-19 Sequelae. *Cell*. 2022;0(0).
- 378 27. Al-Aly Z, Bowe B, Xie Y. Long COVID after breakthrough SARS-CoV-2 infection. *Nat*
379 *Med*. 2022:1-7.
- 380 28. Xie Y, Choi T, Al-Aly Z. Association of Treatment With Nirmatrelvir and the Risk of Post-
381 COVID-19 Condition. *JAMA Intern Med*. 2023.
- 382 29. Xie Y, Choi T, Al-Aly Z. Molnupiravir and risk of post-acute sequelae of covid-19: cohort
383 study. *BMJ*. 2023;381:e074572.
- 384 30. Durstenfeld MS, Peluso MJ, Lin F, Peyser ND, Isasi C, Carton TW, et al. Association of
385 nirmatrelvir/ritonavir treatment with Long COVID symptoms in an online cohort of non-
386 hospitalized individuals experiencing breakthrough SARS-CoV-2 infection in the omicron era.
387 *medRxiv*. 2023.
- 388 31. Bajema KL, Berry K, Streja E, Rajeevan N, Li Y, Yan L, et al. Effectiveness of COVID-19
389 treatment with nirmatrelvir-ritonavir or molnupiravir among U.S. Veterans: target trial emulation
390 studies with one-month and six-month outcomes. *medRxiv*. 2022.

393

394 **Acknowledgements**

395 We are grateful to the study participants. We would like to acknowledge Jeremy Lambert and
396 Quanterix Inc for providing SARS-CoV2 N-antigen and anti-RBD IgG assay kits.

397

398 **Funding**

399 This study was funded by the Centers for Disease Control and Prevention Broad
400 Agency Announcement (contract 75D30120C08009). The National Institute of Allergy
401 and Infectious Diseases also supported JDK during this study (K23 grant number
402 AI146268). These funding sources had no role in the content of the manuscript nor the
403 decision for publication.

404

405

406 **Author contributions**

407 SL, MJP, JDK, SS, and KNM designed the study supported by funding to JDK. SL,
408 MCD, KL, JPR, SAG, JYC, MFC, SP, AM, KA, and JDK collected clinical data and
409 biospecimens. MT, MGK, AZ, DRM, BG, BCY, AC, JWW, and CP were responsible for
410 biospecimen processing and laboratory testing. SL, DVG, and JDK performed and/or
411 interpreted the statistical analysis. SL, MJP, and JDK drafted the initial manuscript and
412 edited the

413 **Competing Interests**

414 No authors report and competing interests.

415 **Data and Material Availability**

416 All data associated with this study are present in the paper. Patient data can only be
417 shared upon request to JDK.

418 **Table 1.** Baseline characteristics of the cohort.

	Total
	N=104
Age, years (median [IQR])	35.5 (27-43.5)
Sex, n (%)	
Female	53 (51%)
Male	51 (49%)
Race/Ethnicity, n (%)	
Hispanic or Latino Ethnicity	21 (21%)
White	59 (58%)
Black or African American	4 (4%)
Asian	14 (14%)
Prefer not to answer	4 (4%)
Vaccination status, n (%)	
Unvaccinated	68 (65%)
Fully vaccinated ^a	36 (35%)
BMI, n (%)	
<25	51 (51%)
25 to 29.9	27 (27%)
>30	22 (22%)
Education, n (%)	
Less than HS	6 (7%)
At least some HS	9 (11%)
At least some college	42 (49%)
At least some graduate school	28 (33%)
Variant ^b , n (%)	
Pre-Delta	61 (59%)
Delta	36 (35%)
Omicron	7 (7%)
Any comorbidity ^c , n (%)	
No	80 (77%)
Yes	24 (23%)
Number of symptoms in acute illness, n (median [IQR])	9 (4 to 13)
Maximum RNA viral load ^d (N viral target), n (median [IQR])	9.2 (7.0 to 10.5)
Maximum RNA viral load (E viral target), n (median [IQR])	8.7 (6.8 to 10.0)
Duration of RNA viral shedding, days (median [IQR])	9 (6 to 12)
Maximum infectious viral load (plaque-forming units), n (median [IQR]) ^e	8.2 (6.0 to 9.8)
Duration of infectious viral shedding, days (median [IQR])	5 (0 to 7)

Abbreviations: BMI: body mass index; HS: high school.

^aFully vaccinated was defined as completion of primary vaccination series greater

than 2 weeks before enrollment.

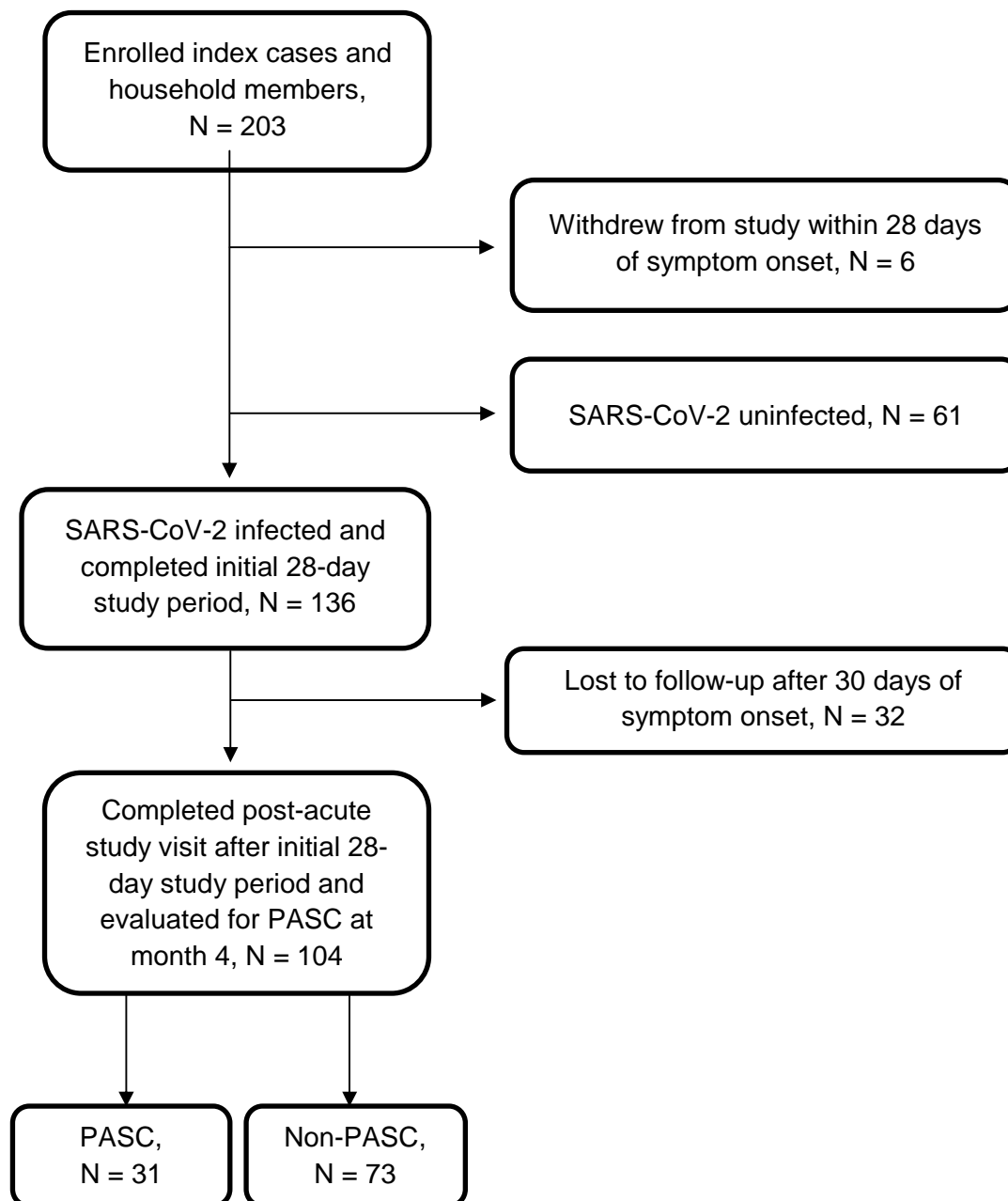
^bVariant status was defined by viral sequencing result for 70 (67%) participants and by calendar time for the remaining 34 (33%) participants.

^cAny comorbidity was defined from the following list: history of autoimmune disease, cancer in the past 2 years, diabetes, HIV/AIDS heart disease, hypertension, lung disease, or kidney disease

^dRNA viral load measurements reported as log-transformed copies/mL.

^eAmong participants with a viral measurement, there were 52 (50%) who had maximum infectious viral load assessed.

420 **Figure 1.** Flow diagram of participants evaluated for post-acute sequelae of SARS-CoV-2
421 infection (PASC) at month 4.
422
423



424 **Table 2.** Association of virologic factors with post-acute sequelae of SARS-CoV-2 infection
 425 (PASC) (N=104).

	Non-PASC N=73	PASC N=31	Adjusted Risk Ratios ^c (95% CI)
Maximum RNA N viral load ^a , n (median [IQR])	8.4 (6.7 to 10.1)	10.0 (8.9 to 10.9)	1.30 (1.03 to 1.66)
Maximum RNA E viral load, n (median [IQR])	8.2 (6.6 to 9.8)	9.1 (8.4 to 10.4)	1.26 (0.99 to 1.61)
Rate of RNA N viral decay	-0.3 (-0.6 to -0.1)	-0.4 (-0.5 to -0.2)	0.59 (0.18 to 1.96)
Rate of RNA E viral decay	-0.4 (-0.6 to -0.2)	-0.5 (-0.7 to -0.3)	0.69 (0.31 to 1.52)
Duration of RNA viral shedding, days (median [IQR])	9 (6 to 11)	10.5 (8 to 13)	1.47 (0.80 to 2.70)
Maximum infectious viral load, n (median [IQR]) ^b	6.9 (5.4 to 9.5)	9.0 (8.4 to 10.3)	1.35 (1.07 to 1.70)
Duration of infectious viral shedding, days (median [IQR])	5 (0 to 7)	6 (2 to 8)	1.08 (0.98 to 1.20)
^a RNA viral load measurements were log-transformed copies/mL.			
^b Among 104 participants with a viral measurement, there were 94 (90%) who had maximum infectious viral load assessed.			
^c Adjusted risk ratios calculated with delta-method standard errors.			

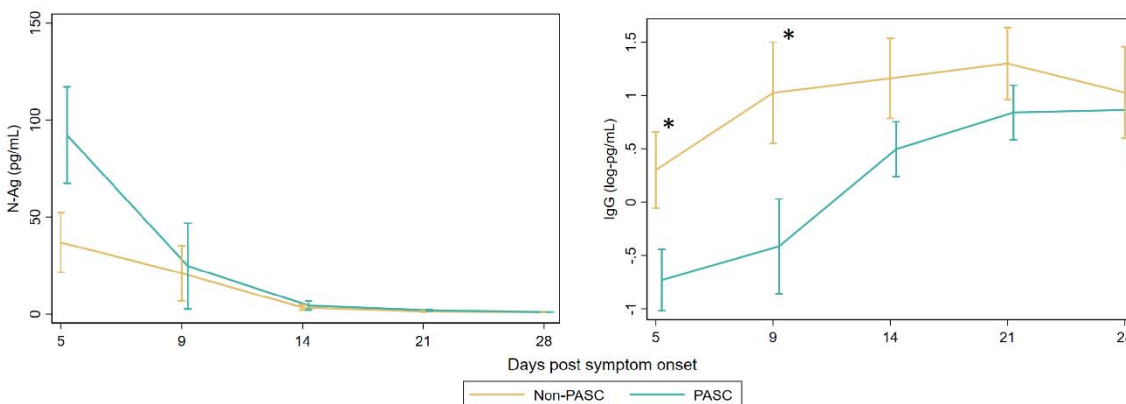
426

427

428 **Figure 2.** Comparison of N-antigen and IgG Spike antibody levels among those with and
429 without post-acute sequelae of SARS-CoV-2 (PASC) over a 28-day period after symptom onset.
430 Figure 2a shows N antigen levels. Figure 2b shows IgG Spike antibody levels among
431 unvaccinated participants.

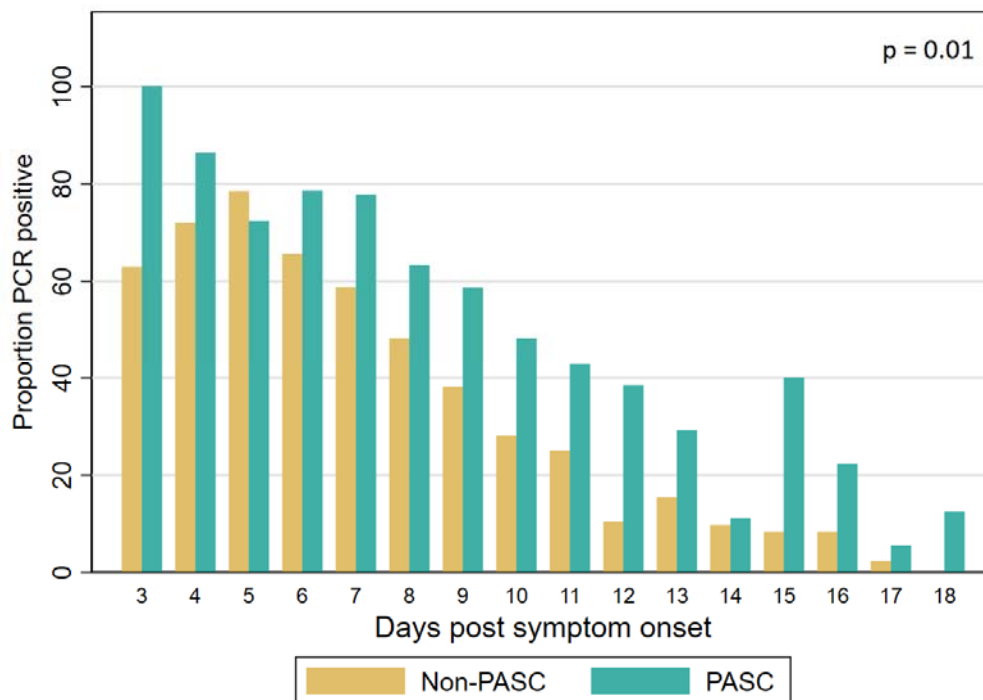
432 **Figure 2a.**

Figure 2b.

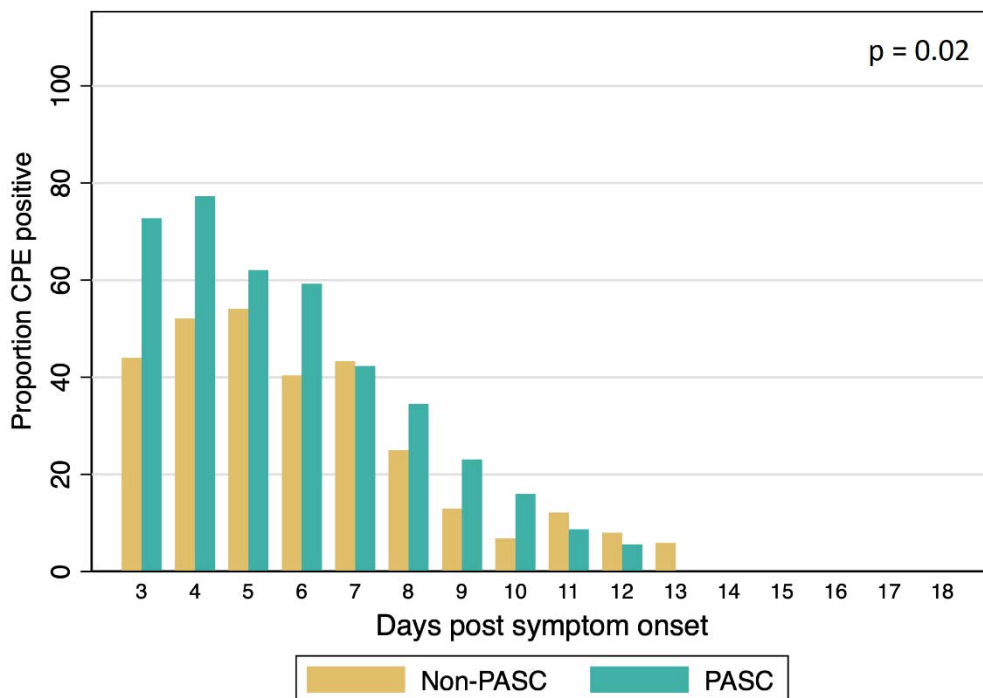


434
435 Estimated mean values and 95% confidence intervals are plotted for PASC and non-PASC groups using generalized
436 estimating equations fit with independent correlation, identity linkage, and normal distribution. Asterisks denote
437 statistically significant ($p < 0.05$) distributions at individual time points.
438

439 **Figure 3.** Proportion of RNA and infectious viral shedding for each day after symptom onset
440 among those with and without PASC. Figure 3a depicts RNA viral shedding while Figure 3b
441 describes infectious viral shedding over an 18-day period.
442

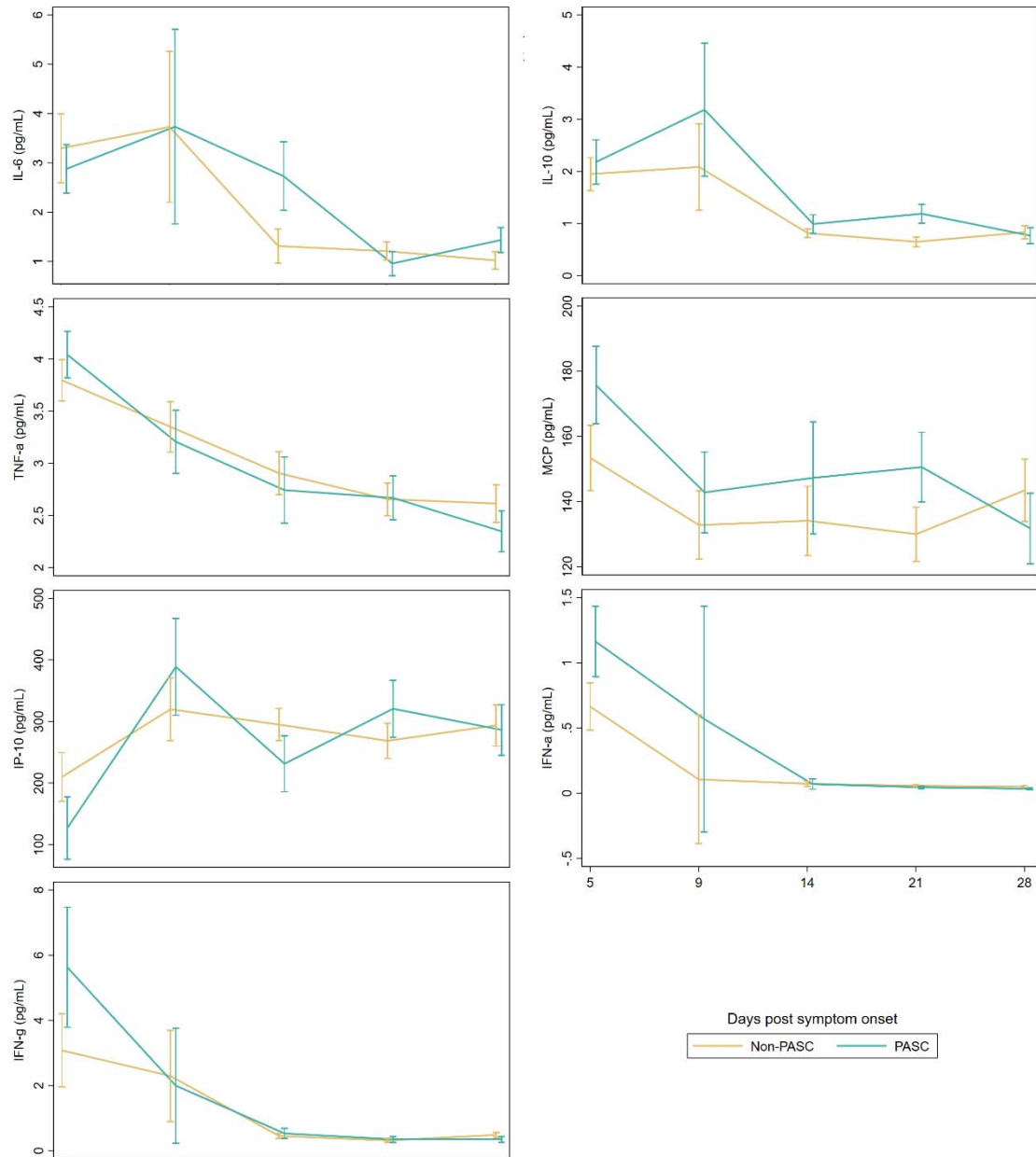


443
444 Figure 3b. Infectious viral shedding



445

446 **Figure 4.** Inflammatory marker levels among those with and without post-acute sequelae of
447 SARS-CoV-2 infection (PASC) over a 28-day period after symptom onset.



448
449 Estimated mean values and 95% confidence intervals are plotted for PASC and non-PASC groups using generalized
450 estimating equations fit with independent correlation, identity linkage, and normal distribution. No statistically
451 significant differences in estimated values were found when comparing PASC vs. non-PASC at each time point.
452
453

454 **Supplementary Material**

455 **Supplemental Table 1: Participant characteristics by outcome status.**

	Non-PASC	PASC	Total
	N=73	N=31	N=104
Age, years (median [IQR])	32 (24-41)	39 (32-51)	35.5 (27-43.5)
Sex, n (%)			
Female	37 (51%)	16 (52%)	53 (51%)
Male	36 (49%)	15 (48%)	51 (49%)
Race/Ethnicity, n (%)			
Hispanic or Latino Ethnicity	16 (23%)	5 (16%)	21 (21%)
White	40 (56%)	19 (61%)	59 (58%)
Black or African American	3 (4%)	1 (3%)	4 (4%)
Asian	10 (14%)	4 (13%)	14 (14%)
Prefer not to answer	2 (3%)	2 (6%)	4 (4%)
Vaccination status, n (%)			
Unvaccinated	47 (64%)	21 (68%)	68 (65%)
Fully vaccinated ^a	26 (36%)	10 (32%)	36 (35%)
BMI, n (%)			
<25 kg/m ²	40 (58%)	11 (35%)	51 (51%)
25 to 29.9	20 (29%)	7 (23%)	27 (27%)
>30	9 (13%)	13 (42%)	22 (22%)
Education, n (%)			
Less than HS	4 (7%)	2 (7%)	6 (7%)
At least some HS	6 (11%)	3 (10%)	9 (11%)
At least some college	29 (53%)	13 (43%)	42 (49%)
At least some graduate school	16 (29%)	12 (40%)	28 (33%)
Variant ^b , n (%)			
Pre-Delta	41 (56%)	20 (65%)	61 (59%)
Delta	26 (36%)	10 (32%)	36 (35%)
Omicron	6 (8%)	1 (3%)	7 (7%)
Any comorbidity ^c , n (%)			
No	58 (79%)	22 (71%)	80 (77%)
Yes	15 (21%)	9 (29%)	24 (23%)
Number of symptoms in acute illness	7 (3 to 12)	12 (9 to 14)	9 (4 to 13)

Abbreviations: BMI: body mass index; HS: high school.

^aFully vaccinated was defined as completion of primary vaccination series with 2 week window prior to symptom onset.

^bVariant status was defined by viral sequencing result for 70 (67%) participants and by calendar time for the remaining 34 (33%) participants.

^cAny comorbidity was defined from the following list: history of autoimmune disease, cancer in the past 2 years, diabetes, heart disease, hypertension, lung disease, or kidney disease

456

457

458

459 **Supplemental Table 2:** Participant characteristics by outcome status, restricted to those who
 460 received a blood draw.

	No PASC	PASC	Total
	N=52	N=28	N=80
Age, years (median [IQR])	37 (29-44)	39.5 (32.5-48.5)	38 (30-45)
Sex, n (%)			
Female	28 (54)	13 (46)	41 (51)
Male	24 (46)	15 (54)	39 (49)
Race/Ethnicity, n (%)			
Hispanic or Latino Ethnicity	10 (20)	5 (18)	15 (19)
White	27 (54)	17 (61)	44 (56)
Black or African American	2 (4)	1 (4)	3 (4)
Asian	9 (18)	3 (11)	12 (15)
Prefer not to answer	2 (4)	2 (7)	4 (5)
Vaccination status, n (%)			
Unvaccinated	30 (58)	20 (71)	50 (63)
Fully vaccinated ^a	22 (42)	8 (29)	30 (38)
BMI, n (%)			
<25	23 (47)	11 (39)	34 (44)
25 to 29.9	18 (37)	6 (21)	24 (31)
>30	8 (16)	11 (39)	19 (25)
Education, n (%)			
Less than HS	3 (6)	2 (7)	5 (6)
At least some HS	6 (12)	3 (11)	9 (12)
At least some college	27 (53)	11 (41)	38 (49)
At least some graduate school	15 (29)	11 (41)	26 (33)
Variant ^b , n (%)			
Pre-Delta	31 (60)	19 (68)	50 (63)
Delta	21 (40)	9 (32)	30 (38)
Omicron	0 (0)	0 (0)	0 (0)
Any comorbidity ^c , n (%)			
No	38 (73)	20 (71)	58 (73)
Yes	14 (27)	8 (29)	22 (28)
Number of symptoms in acute illness	9 (4.5 to 14)	12 (10 to 14.5)	11 (6 to 14)

Abbreviations: BMI: body mass index; HS: high school.

^aFully vaccinated was defined as completion of primary vaccination series with 2 week window prior to symptom onset.

^bVariant status was defined by viral sequencing result for 70 (67%) participants and by calendar time for the remaining 34 (33%) participants.

^cAny comorbidity was defined from the following list: history of autoimmune disease, cancer in the past 2 years, diabetes, heart disease, hypertension, lung disease, or kidney disease

461

462