

1 **Type of Article:** Original Article

2 **Title:** Platelet hyperactivity in patients of vascular dementia

3 **Running Title:** Platelet hyperactivity in VaD patients

4 **Name & Address of authors and their Institution:**

5 1) Priya Dev, PhD Scholar, Department of Neurology, Institute of Medical Sciences,  
6 Banaras Hindu University, Varanasi-221005, Uttar Pradesh, India. Email:  
7 [priyadev8090@gmail.com](mailto:priyadev8090@gmail.com)

8 2) Mohammad Ekhlak, PhD Scholar, Center for Advanced Research on Platelet  
9 Signaling and Thrombosis Biology, Department of Biochemistry, Institute of Medical  
10 Sciences, Banaras Hindu University, Varanasi, Uttar Pradesh, India. Email:  
11 [mohammadekhlakh02@gmail.com](mailto:mohammadekhlakh02@gmail.com)

12 3) Ashish Yadav, Assistant Professor, Department of Biostatistics, Institute of Medical  
13 Sciences, Banaras Hindu University; Varanasi-221005, Uttar Pradesh, India. Email:  
14 [ashstatbhu@gmail.com](mailto:ashstatbhu@gmail.com)

15 4) Debabrata Dash. M.D., D. Sc., Professor, Center for Advanced Research on Platelet  
16 Signaling and Thrombosis Biology, Department of Biochemistry, Institute of Medical  
17 Sciences, Banaras Hindu University; Varanasi-221005, Uttar Pradesh, India. Email:  
18 [ddash.biochem@gmail.com](mailto:ddash.biochem@gmail.com)

19 5) Abhishek Pathak, M.D., D.M., Associate Professor, Department of Neurology,  
20 Institute of Medical Sciences, Banaras Hindu University, Varanasi-221005, Uttar  
21 Pradesh, India. Email: [abhishekipathakaiims@gmail.com](mailto:abhishekipathakaiims@gmail.com)

22  
23 **Disclaimer:** Priya Dev and Mohammad Ekhlak will be sharing 1<sup>st</sup> authorship.

24 **Corresponding Author:**

25 Dr. Abhishek Pathak, M.D., D.M.,

26 Associate Professor, Department of Neurology,

27 Institute of Medical Science, Banaras Hindu University,

28 Varanasi-221005, UP [INDIA]

29 **Email:**[abhishekpathakaiims@gmail.com](mailto:abhishekpathakaiims@gmail.com)

30 **Phone no.** +91 8948512666

31 **Word count: Abstract: 176, Main text: 2846**

32 **Tables: 3, Figure: 2**

33 **Supplementary Tables:2**

34 **Supplementary Figure:2**

35

36 **Abstract:**

37 **Background:** Platelet-monocyte (PMA) and platelet-neutrophil aggregations (PNA) are  
38 critical in causing acute inflammatory reactions favoring vascular dysfunction. However, the  
39 precise pathophysiological link between Platelet-leukocyte aggregates and Vascular  
40 Dementia (VaD) remains undetermined. Our study aimed to investigate whether platelet  
41 hyperresponsiveness is independently associated with a predictor of VaD.

42 **Methods:** Platelet from 19 VaD patients and 18 age-matched healthy controls were subjected  
43 to different investigations.

44 **Result:** PMA, PNA, P-selectin externalization, and intracellular free  $Ca^{+2}$  ( $[Ca^{+2}]_i$ ) flux were  
45 evaluated either in whole blood or in platelet-rich plasma. The result revealed that PMA,  
46 PNA, P-selectin, and  $[Ca^{+2}]_i$  were found to be significantly outnumbered in the VaD group  
47 (4.1, 2.8, 2.7, and 2.5 times higher) compared to the control group with p-value <0.001,  
48 <0.001, <0.001, and 0.001 at 95% CI = 31.164 to 54.855, 8.653 to 22.793, 35.064 to 94.369  
49 and 8747.015 to 28829.618 respectively.

50 **Conclusion:** Patients with Vascular Dementia have increased platelet leucocyte interaction,  
51 and PMA has the most significant prediction of vascular dementia than in subjects of healthy  
52 control. Thus, platelets in VaD patients switch to a ‘hyperactive’ phenotype.

53 **Keywords:** Platelet-monocyte aggregations, Platelet-neutrophil aggregations, P-selectin,  
54 Vascular dementia, Platelet hyper-responsiveness

55

56

57

58

59 **INTRODUCTION:**

60 Vascular dementia (VaD) is a type of dementia marked by significant cognitive impairment  
61 caused by an ischemic or haemorrhagic stroke or hypoperfusion of brain areas involved in  
62 memory, cognition, and behaviour. The following lesions are the most common causes of  
63 vascular dementia: ischemic lesions affecting large or small vessels (such as single strategic  
64 strokes, multi-infarct dementia, small-vessel disease, lacunas, and venous occlusions); or  
65 hypoperfusion lesions (including global or selective ischemia, border-zone infarcts, and  
66 partial white matter ischemia).[1] VaD is the second most prevalent subtype of dementia after  
67 Alzheimer's disease (AD), contributing to around 15% to 20% of dementia cases in North  
68 America and Europe, with slightly higher estimates of over 30% in Asia and developing  
69 nations.[2-4] The overall risk of dementia following stroke varies greatly, ranging from 7% in  
70 population-based studies of first-ever stroke in previously non-demented people to over 40%  
71 in hospital-based studies of recurrent stroke with pre-stroke dementia.[5]  
72 Stroke is still a well-known cause of dementia, increasing the risk by nearly two-fold.[6,7]  
73 Stroke features, particularly severity and location, contribute to a significant portion of the  
74 variability in dementia risk following a stroke.[8-11] Depending on education and premorbid  
75 cognitive performance, pre-existing medial temporal lobe atrophy, family history of  
76 dementia, and comorbidities, patients may resist mental deterioration even after severe  
77 strokes.[5,8] Although dementia following a stroke is highest in the subacute period, it  
78 continues for several years afterward, implying either a role for cognitive reserve or standard  
79 etiological variables, such as cerebral small vessel disease. As previously stated, a closer  
80 examination of the brain in old age frequently reveals a variety of pathologies, ranging from  
81 vascular pathologies such as macroscopic infarcts, microbleeds, micro infarcts, and amyloid  
82 angiopathy to parenchymal amyloid and tau deposits, TDP (TAR DNA-binding protein)-43,  
83 hippocampal sclerosis, and - synucleinopathies.[12-14] With a typical age of onset of

84 dementia in the community of over 80 years, nearly every patient coming to a non-  
85 specialized memory clinic is likely to have a multifactorial aetiology of cognitive loss.[15]

86

87 Progressive VaD often culminates in acute thrombotic events. Crosstalk between platelets  
88 and leukocytes influences primary and acute inflammatory reactions, favouring secondary  
89 thrombosis at embolization locations. Leukocytes influence the inflammatory response as  
90 well as vascular dysfunction. Platelet-leukocyte interaction contributes to the various phases  
91 of ischemic stroke. Increased circulating levels of platelet neutrophil aggregates (PNAs) and  
92 platelet monocyte aggregates (PMAs) are linked to direct cellular contacts between platelets  
93 and innate leukocytes during the acute phase of stroke.[16] PNAs rise in the first three days  
94 following an ischemic event, while PMAs are mostly observable on day two.[17]  
95 Interestingly, platelet sequestration requires neutrophil adherence, suggesting that platelet  
96 dysfunction is not the primary cause of post-ischemic vascular dysfunction.[18] The  
97 interaction between platelets and leukocytes is thought to promote inflammatory processes  
98 and tissue damage by increasing leukocyte activation and recruitment.[19] Platelet-leukocyte  
99 interactions are mediated by P-selectin (CD62P) and CD40L-CD40, which are elevated in  
100 platelets of patients with acute stroke or transient ischemic attack;[20] enhance brain damage  
101 by facilitating leukocyte activation recruitment, increasing BBB permeability, and increasing  
102 the infarct volume.[18,21]

103 The precise pathophysiological link between Platelet-leukocyte aggregates and VaD yet  
104 remains undetermined. Although platelet-leukocyte interactions have been studied in ADs  
105 patients, the study in VaD will help us in differential diagnosis with a more precise subtype  
106 diagnosis beyond a coarse clinical cognitive phenotype. This study aims to study the  
107 association of PMA, PNA, P-selectin, and calcium levels as a part of platelet function in  
108 vascular dementia patients compared to healthy control. This study will guide us towards a

109 better approach in treatment decisions depending upon pathways implicated in VaD patients,  
110 notably those of vascular origin. So, we aim to study the crosstalk between platelet and  
111 leukocytes in VaD patients.

## 112 **METHODOLOGY:**

### 113 **Patient selection**

114 Vascular dementia was diagnosed based on the National Institute of Neurological Disorders  
115 and Stroke-Association Internationale pour la recherche et l'Enseignement en Neurosciences  
116 (NINDS AIREN) Criteria; Cognitive functions were assessed by MMSE, and a complex  
117 cognitive function was evaluated. All consecutive patients with vascular dementia who were  
118 admitted or visited the outpatient department were enrolled in the study. General  
119 inclusion/exclusion criteria were as follows:

### 120 **Inclusion criteria**

121 (1) Control subjects: these individuals were fully independent in the activities of daily living  
122 (ADL), and instrumental activities of daily living (IADLs); (2) Probable VaD: meet the  
123 National Institute of Neurological Disorders and Stroke- Association Internationale pour la  
124 Recherche et l'Enseignement en Neurosciences (NINDS AIREN) Criteria; (Diagnosis of type  
125 2 diabetes (DM) was based on American Diabetes Association criteria such as fasting plasma  
126 glucose of 7.0mmol/L, current treatment with a hypoglycaemic agent, casual glucose of  
127 11.1mmol/L. For the controls or the patients with impaired fasting glucose DM was  
128 diagnosed if a 2-hour post-glucose level after an approx. 75-g oral glucose tolerance test  
129 11.1mmol/L. Hypertension was diagnosed if systolic blood pressure >140mmHg and  
130 Diastolic pressure >90mmHg, or as antihypertensive treatment. Two readings were taken  
131 with a 5-minute interval between measurements. The mean of the two readings was recorded.  
132 CAD (coronary athero- sclerotic heart disease) was defined as the occurrence of a non-fatal

133 myocardial infarction, percutaneous coronary angioplasty, or other forms of acute or chronic  
134 ischemic heart disease.

135 The diagnostic evaluation included: Non-Contrast Computed Tomography (NCCT) or  
136 Brain Magnetic resonance imaging (MRI), hemogram, biochemical tests, electrocardiogram,  
137 transoesophageal echocardiography, vascular imaging (intra- and extra-cranial vessels),  
138 assessment of prothrombic state. The patient also underwent 24 h Holter monitoring to rule  
139 out any atrial fibrillation.

#### 140 **Exclusion criteria**

141 Exclusion criteria for this study included other psychiatric diseases, chronic alcoholism,  
142 tumour, infection, haematological disorders, atrial fibrillation, chronic liver and kidney  
143 diseases, abnormal vitamin B12 or thyroid function tests, depression (as indicated by a score  
144 of 410 on the Geriatric Depression Scale), Parkinson's disease, therapeutic use of  
145 anticoagulant for various medical conditions and dementia treatment.

146

#### 147 **Sample preparation**

148 Blood from patients diagnosed with VaD (n=19) was collected within seven days of VaD  
149 onset from the forearm venepuncture with minimal stasis to avoid platelet stimulation.  
150 Sample from age-matched healthy control (n=18) with no history of a relevant disease or  
151 medication within a year was collected after obtaining written informed consent, strictly as  
152 per recommendations and approved by the Institutional Ethical Committee of the Institute of  
153 Medical Sciences, Banaras Hindu University. The study methodologies conformed to the  
154 standards set by the Declaration of Helsinki. Blood was processed within 20 min of  
155 collection. Whole blood was employed for the platelet-leucocyte interaction experiment.

156 Blood was centrifuged at 100×g for 20 min at room temperature to obtain platelet-rich  
157 plasma (PRP), used for P-selectin externalization and intracellular calcium measurement  
158 studies.[22]

### 159 **Platelet monocyte and neutrophil aggregation**

160 Fresh human blood (20 µl) was added to a cocktail containing 10 µl each from APC-  
161 anti-CD41a (platelet-specific) (Hu CD41a APC HIP8; Cat no.: 559777) and FITC-anti-CD14  
162 (leukocyte-specific) antibodies (Hu CD14 FITC M5E2; Cat no.:555397) and mixed gently.  
163 RBCs were lysed with 800 µl FACS lysis solution (1X, BD Biosciences) (BD FACS Lysing  
164 Solution 10X 100ML IVD; Cat no.: 349202) for 10 min at RT. Leucocyte-platelet interaction  
165 was analysed on a flow cytometer (FACS Calibur, BD Biosciences) within 30 min. Side  
166 scatter voltage was set at 350 with a threshold of 52 V, and amorphous gates were drawn to  
167 encompass neutrophils and monocytes separate from noise. A dot plot of side scatters (SSC)  
168 versus log FITC-CD14 fluorescence was created in the CellQuest Pro software. Amorphous  
169 gates were drawn for monocyte (high fluorescence and low SSC) and neutrophil (low  
170 fluorescence and high SSC) populations. All fluorescence data were collected using 4-  
171 quadrant logarithmic amplification for 1000 events in either neutrophil or monocyte gate  
172 from each sample and analysed using CellQuest Pro Software.

173

### 174 **Secretion from platelet $\alpha$ -granules**

175 Secretion from platelet  $\alpha$ -granules in response to a stimulus was quantified by surface  
176 expression of P-selectin (CD62P). Briefly, 50 µl PRP were taken, and cells were stained with  
177 FITC-labelled anti-CD62P antibody (Hu/NHP CD62P PE AC1.2; Cat no.: 550561) (5 % v/v)  
178 for 30 min at room temperature in the dark. Samples were suspended in sheath fluid and



179 subjected to flow cytometry. The acquisition was performed on a constant number of  
180 particles (10,000 events), and the results were expressed as the mean of positive platelets.

181

182

### 183 **Measurement of intracellular free calcium ( $[Ca^{+2}]_i$ )**

184 PRP (5  $\mu$ l) was diluted in 495  $\mu$ l buffer B (20 mM HEPES, 138 mM NaCl, 2.9 mM  
185 KCl, 1 mM  $MgCl_2$ , 0.36 mM  $NaH_2PO_4$ , supplemented with 5 mM glucose, pH 7.4). Fluo-  
186 4/AM was added to each tube and was incubated for 30 min at room temperature. After  
187 appropriate gating of platelets using a flow cytometer (Becton Dickinson, model Accuri C6),  
188 events were analysed in the FL1 channel within the time-lapse of 1.5–4.0 min (in the upper  
189 right quadrant) following the addition of reagents. Baseline calcium levels were recorded for  
190 60 s, followed by the addition of 1 mM  $CaCO_3$  and five  $\mu$ M TRAP using gel-loading pipette  
191 tips as described by Mallick et al., 2015.[23]

192

### 193 **Flow cytometry acquisition and interpretation of data**

194 Flow cytometry was performed using a FACS Calibur instrument with CELLQuest software  
195 (Becton Dickinson Immunocytometry Systems). Forward and side scatter measurements were  
196 made with gain settings in linear mode to analyse platelet-monocyte or platelet-neutrophil  
197 interactions. The monocyte and the neutrophil populations were thus easily distinguished  
198 (Figure 1A, 1B). A minimum of 2000 monocytes and 5000 neutrophils were acquired for  
199 each determination. A three-color analysis was used for the simultaneous detection of  
200 platelet-leukocyte aggregates and platelet-leukocyte activation. Monocytes and neutrophils  
201 were further gated into a CD41a-positive platelet-bound population, gate two, and a CD41a-  
202 negative platelet-free population, gate three (FL1 versus FL4, Figure 1A, 1B). Unbound

203 platelets were measured with forwarding and side scatter signals in logarithmic mode. Ten  
204 thousand events were acquired with a live gate on FSC versus SSC. Results were compared  
205 to antibody-matched controls and expressed as positive percentage cells or mean fluorescence  
206 intensity (MFI) after subtracting the control antibodies.

207

#### 208 **Ethical Statement:**

209 The Institutional ethical committee of the Institute of Medical Sciences, Banaras Hindu  
210 University, UP, India, received approval for a study protocol. All participants, before  
211 enrolment, read the study protocol and signed informed consent to have been included in the  
212 study. The study was conducted by the Declaration of Institutional ethics committee.

213

#### 214 **Statistical Evaluation:**

215 The statistical analysis was performed with the SPSS v16. The obtained data were expressed  
216 as mean and standard deviation. The student's t-test was performed to determine statistical  
217 significance. The level of  $p < 0.05$  was considered the threshold for statistical significance.  
218 ROC curve was drawn in a post hoc analysis to determine the cut-off value of the platelet-  
219 leukocyte experiment variables for the diseased and control group. Further, principal  
220 component analysis (PCA) to select the explanatory variable for the logistic regression  
221 model.

222

#### 223 **Results:**

224 The study involved 19 VaD patients (with a mean age of  $63.63 \pm 12.35$  years) and 18 age and  
225 gender-matched healthy control subjects (with a mean age of  $60.22 \pm 14.17$  years). Their  
226 demographic data is represented in table 1.

227 Out of 19 VaD patients, 79% were male; all had a history of ischemic stroke; 17 patients had  
228 partial anterior circulation infarct (PACI) and two patients had Lacunar infarct (LACI); 10  
229 patients were Small vessel disease (SVD), seven were cardioembolic, and 2 were cryptogenic  
230 stroke in origin in TOAST classification; 52.6% had a history of hypertension, and 26.3%  
231 patients had periventricular white matter (PWM) changes with Fazekas grade 3. (Table 1)

232

233 An independent sample t-test was used to analyse the PMA, PNA, P-selectin, and  $[Ca^{+2}]_i$   
234 level between VaD patients and control subjects. The result revealed that PMA (fig 1A), PNA  
235 (fig 1B), P-selectin (fig 2A), and  $[Ca^{+2}]_i$  (fig 2B) were found to be significantly higher in the  
236 VaD group (4.1, 2.8, 2.7, and 2.5 times higher) compared to the control group with p-value  
237  $<0.001$ ,  $<0.001$ ,  $<0.001$ , and  $0.001$  at 95% CI = 31.164 to 54.855, 8.653 to 22.793, 35.064 to  
238 94.369 and 8747.015 to 28829.618 respectively. (Table 1) (Fig 1 and 2)

239

240 The post hoc analysis was used to draw a ROC curve to determine the cut-off value for PMA  
241 (with the area under the ROC curve (AUC)= 0.988), PNA (AUC=0.944), p-selectin  
242 (AUC=0.819) and  $[Ca^{+2}]_i$  (AUC=0.871) variables for discrimination VaD from the control  
243 group. Thus, the cut-off value was determined as 22.35% (sensitivity=94.7% and  
244 specificity=100%), 17.00% (sensitivity=78.9% and specificity=100%), 61.37 MFI  
245 (sensitivity=78.9% and specificity=78%), and 18778.5 MFI (sensitivity=78.9% and  
246 specificity=78%) for PMA, PNA, P-selectin and  $[Ca^{+2}]_i$  variables respectively. (Table 2)

247

248 The predictor variables PMA, PNA, P-selectin, and  $[Ca^{+2}]_i$  were highly correlated the value  
249 of the Pearson correlation coefficient lies in the range from 0.65 to 0.84. The problem of  
250 collinearity was addressed using a multivariate approach called principal component analysis  
251 (PCA). PCA results suggest that the first component, i.e., PMA had the highest eigenvalues

252 and then is PNA's value. But in supplementary table 1, we can observe that in the control  
253 group there is a significant ( $P=0.0014$ ) association ( $r=0.69$ ) between PMA and PNA, and rest  
254 of the covariates are not correlated. One can observe a circular representation of a scatter plot  
255 from Supplementary Figure 1 representing a weak correlation. Similarly, we can observe that  
256 in the diseased group, except for P-selectin and PNA rest, all the covariates are significantly  
257 associated with each other (Supplementary Table 2). The exact inference can be observed in  
258 Supplementary Figure 2, where a positive linear trend is observed between the covariates.

259 Thus, finally, a logistic regression model with the group as outcome variables (PNA, P-  
260 selectin, and  $[Ca^{+2}]_i$ ), as an explanatory variable was developed however, the models suggest  
261 that out of them, only PNA as an explanatory variable was statistically significant. (Table 3)  
262 Table 3 shows that PNA is a significant predictor variable in explaining VaD disease and  
263 alone can explain 38% of the variation.

264

## 265 **Discussion:**

266 Our result shows that all the platelet functions, namely, PMA, PNA, p-selectin, and  $[Ca^{+2}]_i$ ,  
267 are significantly increased in VaD compared to control. The post- hoc analysis concluded that  
268 PMA had the eigenvalue in Vascular Dementia compared to the control. This is the first study  
269 with the above-mentioned parameters looking into the platelet activity in Vascular dementia  
270 vis-a-vis age and sex-matched control patients. The increased platelet activity has been  
271 implicated in the development of Alzheimer's Disease but their role in the development of  
272 Vascular Dementia has not been studied adequately. Vascular Dementia has been implicated  
273 to have an underlying inflammatory cascade. The role of platelets during the inflammatory  
274 state interacts with leucocytes via various soluble mediators and direct cell-based  
275 interactions. Platelet has the highest affinity for macrophages and monocytes, followed by  
276 neutrophils. Cell-based interaction includes activation of CXCL4, which prevents monocyte



301 patient was purely of Vascular dementia, and none of the patients with mixed dementia were  
302 included.

303 Our present study had a few major limitations. Firstly, the sample size of the patients was  
304 very small. Secondly, the other types of dementia could also have been chosen as a control,  
305 namely FTD, AD, and DLBD. Thirdly whether increased platelet interaction is the cause or  
306 the effect cannot be proven by the present study. To prove its causality, a prospective study  
307 with intermittent platelet activity with a larger population of patients with vascular risk  
308 factors developing into Vascular dementia should be studied.

309 However, this study indicates that drugs that would inhibit platelet leucocyte interaction may  
310 have the potential for therapeutic importance in patients with vascular dementia.

311

312 **Conclusion:** Patients with Vascular Dementia have increased platelet leucocyte interaction,  
313 and PMA has the most significant prediction of vascular dementia than in subjects of healthy  
314 control. Inhibiting this platelet leucocyte interaction may have a therapeutic advantage.  
315 However, larger prospective studies with a larger population of vascular dementia are  
316 required to prove the present hypothesis.

317

### 318 **Acknowledgements**

319 I would like to thank BHU and Sir Sunder Lal Hospital for their infrastructural support.

### 320 **Sources of Funding:**

321 This research was supported by Institution of Eminence (IOE) grant BHU (grant number  
322 42872) received by A. Pathak.

323 **Conflict-of-interest disclosure:** The Author(s) declare(s) that there is no conflict of interest

324 **Statement of Ethics:**

325 **-Study approval statement:** This study protocol was reviewed and approved by Institutional  
326 Ethics Committee, Institute of Medical Sciences, Banaras Hindu University, Varanasi, India,  
327 and Reference number [Dean/2020/EC/2155]

328 **-Consent to participate statement:** WRITTEN informed consent was obtained from  
329 participants or legal guardian to participate in the study.

330 **Funding sources:** This research was supported by IOE (Institution of Eminence) Banaras  
331 Hindu University. IOE Grant number: 42872.

332 **Data Availability Statement:** All data generated or analysed during this study are included  
333 in this article and its supplementary material file.

334 **Authors agreement:** All authors have viewed and agreed to the submission

335 **Consent for publication:** Not applicable

336 **Consent for publication:** Not applicable

337 **Author Contributions:** PD: Experiments, paper writing and editing; ME: experiments; AY:  
338 Statistical analysis; DD: provided instruments facility for Experiments; AP:  
339 conceptualization, paper editing, writing

340

341 **References:**

- 342 1. Gustavo C. Román, in *Neurology and Clinical Neuroscience*, 2007
- 343 2. Jhoo J H, Kim KW, Huh Y, Lee S B, Park J H, Lee J J and others (2008).
- 344 Prevalence of dementia and its subtypes in an elderly urban korean population:
- 345 results from the Korean Longitudinal Study on Health And Aging (KLoSHA).
- 346 *Dementia and geriatric cognitive disorders*, 26(3), 270–276.
- 347 <https://doi.org/10.1159/000160960>
- 348 3. Chan K Y, Wang W, Wu J J, Liu L, Theodoratou E, Car J, and others (2013).
- 349 Epidemiology of Alzheimer's disease and other forms of dementia in China, 1990-
- 350 2010: a systematic review and analysis. *Lancet (London, England)*, 381(9882),
- 351 2016–2023. [https://doi.org/10.1016/S0140-6736\(13\)60221-4](https://doi.org/10.1016/S0140-6736(13)60221-4)
- 352 4. Kalaria RN, Maestre GE, Arizaga R, Friedland RP, Galasko D, Hall K and others
- 353 (2008). Alzheimer's disease and vascular dementia in developing countries:
- 354 prevalence, management, and risk factors. *The Lancet. Neurology*, 7(9), 812–826.
- 355 [https://doi.org/10.1016/S1474-4422\(08\)70169-8](https://doi.org/10.1016/S1474-4422(08)70169-8)
- 356 5. Pendlebury ST and Rothwell PM (2009). Prevalence, incidence, and factors
- 357 associated with pre-stroke and post-stroke dementia: a systematic review and meta-
- 358 analysis. *The Lancet. Neurology*, 8(11), 1006–1018. [https://doi.org/10.1016/S1474-](https://doi.org/10.1016/S1474-4422(09)70236-4)
- 359 [4422\(09\)70236-4](https://doi.org/10.1016/S1474-4422(09)70236-4)
- 360 6. Wolters FJ and Ikram MA (2018). Epidemiology of Dementia: The Burden on
- 361 Society, the Challenges for Research. *Methods in molecular biology (Clifton, N.J.)*,
- 362 1750, 3–14. [https://doi.org/10.1007/978-1-4939-7704-8\\_1](https://doi.org/10.1007/978-1-4939-7704-8_1)
- 363 7. Kuźma E, Lourida I, Moore SF, Levine DA, Ukoumunne OC, Llewellyn DJ (2018).
- 364 Stroke and dementia risk: A systematic review and meta-analysis. *Alzheimer's &*



- 365            *dementia : the journal of the Alzheimer's Association*, 14(11), 1416–1426.
- 366            <https://doi.org/10.1016/j.jalz.2018.06.3061>
- 367            8. Pendlebury ST, Rothwell PM, Oxford Vascular Study (2019). Incidence and
- 368            prevalence of dementia associated with transient ischaemic attack and stroke:
- 369            analysis of the population-based Oxford Vascular Study. *The Lancet. Neurology*,
- 370            18(3), 248–258. [https://doi.org/10.1016/S1474-4422\(18\)30442-3](https://doi.org/10.1016/S1474-4422(18)30442-3)
- 371            9. Munsch F, Sagnier S, Asselineau J, Bigourdan A, Guttmann CR, Debruxelles S,
- 372            (2016). Stroke Location Is an Independent Predictor of Cognitive Outcome. *Stroke*,
- 373            47(1), 66–73. <https://doi.org/10.1161/STROKEAHA.115.011242>
- 374            10. Tatemichi TK, Desmond DW, Prohovnik I, Cross DT, Gropen T I, Mohr J P
- 375            (1992). Confusion and memory loss from capsular genu infarction: a
- 376            thalamocortical disconnection syndrome?. *Neurology*, 42(10), 1966–1979.
- 377            <https://doi.org/10.1212/wnl.42.10.1966>
- 378            11. Mok VC, Lam B Y, Wong A, Ko H, Markus HS, Wong LK (2017). Early-onset and
- 379            delayed-onset poststroke dementia - revisiting the mechanisms. *Nature reviews.*
- 380            *Neurology*, 13(3), 148–159. <https://doi.org/10.1038/nrneurol.2017.16>
- 381            12. Portegies ML, Wolters FJ, Hofman A, Ikram MK, Koudstaal PJ, Ikram MA (2016).
- 382            Prestroke Vascular Pathology and the Risk of Recurrent Stroke and Poststroke
- 383            Dementia. *Stroke*, 47(8), 2119–2122.
- 384            <https://doi.org/10.1161/STROKEAHA.116.014094>
- 385            13. Boyle P A, Yu L, Wilson RS, Leurgans SE, Schneider J A, Bennett DA (2018).
- 386            Person-specific contribution of neuropathologies to cognitive loss in old age.
- 387            *Annals of neurology*, 83(1), 74–83. <https://doi.org/10.1002/ana.25123>
- 388            14. Stephan BC, Matthews FE, Ma B, Muniz G, Hunter S, Davis D and others (2012).
- 389            Alzheimer and vascular neuropathological changes associated with different

- 390 cognitive States in a non-demented sample. *Journal of Alzheimer's disease : JAD*,  
391 29(2), 309–318. <https://doi.org/10.3233/JAD-2011-110518>
- 392 15. Wolters FJ, van der Lee SJ, Koudstaal PJ, van Duijn CM, Hofman A, Ikram MK,  
393 and others (2017). Parental family history of dementia in relation to subclinical  
394 brain disease and dementia risk. *Neurology*, 88(17), 1642–1649.  
395 <https://doi.org/10.1212/WNL.0000000000003871>
- 396 16. Ishikawa T, Shimizu M, Kohara S, Takizawa S, Kitagawa Y, Takagi, S. (2012).  
397 Appearance of WBC-platelet complex in acute ischemic stroke, predominantly in  
398 atherothrombotic infarction. *Journal of atherosclerosis and thrombosis*, 19(5), 494–  
399 501. <https://doi.org/10.5551/jat.10637>
- 400 17. Marquardt L, Anders C, Buggle F, Palm F, Hellstern P, Grau AJ (2009). Leukocyte-  
401 platelet aggregates in acute and subacute ischemic stroke. *Cerebrovascular diseases*  
402 (*Basel, Switzerland*), 28(3), 276–282. <https://doi.org/10.1159/000228710>
- 403 18. Ishikawa M, Cooper D, Arumugam TV, Zhang J H, Nanda A, Granger DN (2004).  
404 Platelet-leukocyte-endothelial cell interactions after middle cerebral artery  
405 occlusion and reperfusion. *Journal of cerebral blood flow and metabolism: official*  
406 *journal of the International Society of Cerebral Blood Flow and Metabolism*, 24(8),  
407 907–915. <https://doi.org/10.1097/01.WCB.0000132690.96836.7F>
- 408 19. Htun P, Fateh-Moghadam S, Tomandl B, Handschu R, Klinger K, Stellos K,  
409 Garlich C, and others (2006). Course of platelet activation and platelet-leukocyte  
410 interaction in cerebrovascular ischemia. *Stroke*, 37(9), 2283–2287.  
411 <https://doi.org/10.1161/01.STR.0000236638.75591.61>
- 412 20. Lukasik M, Dworacki G, Michalak S, Kufel-Grabowska J, Watala C, Kozubski W  
413 (2012). Chronic hyper-reactivity of platelets resulting in enhanced monocyte

- 414 recruitment in patients after ischaemic stroke. *Platelets*, 23(2), 132–142.
- 415 <https://doi.org/10.3109/09537104.2011.597528>
- 416 21. Ishikawa M, Vowinkel T, Stokes KY, Arumugam TV, Yilmaz G, Nanda A and  
417 others (2005). CD40/CD40 ligand signaling in mouse cerebral microvasculature  
418 after focal ischemia/reperfusion. *Circulation*, 111(13), 1690–1696.  
419 <https://doi.org/10.1161/01.CIR.0000160349.42665.0C>
- 420 22. Wiśniewski A, Filipka, K. (2020). The Phenomenon of Clopidogrel High On-  
421 Treatment Platelet Reactivity in Ischemic Stroke Subjects: A Comprehensive  
422 Review. *International journal of molecular sciences*, 21(17), 6408.  
423 <https://doi.org/10.3390/ijms21176408>
- 424 23. Mallick RL, Kumari S, Singh N, Sonkar VK, Dash D (2015). Prion protein  
425 fragment (106-126) induces prothrombotic state by raising platelet intracellular  
426 calcium and microparticle release. *Cell calcium*, 57(4), 300–311.  
427 <https://doi.org/10.1016/j.ceca.2015.02.002>
- 428

429

**Tables**

430 **Table 1: Baseline demographic and clinical data of VaD patients and Control**

Sl. No.	Variables	VaD (N=19)	Control (N=18) (Mean±SD)	P-Value	95% CI	
					Lower	Upper
1	Age (mean ± SD)	63.63±12.35	60.22 14.17	0.4400	-5.447	12.266
2	NIHSS	16.42±5.83				
3	GCS (Out of 15)	12± 2.91				
4	PMA (%)	57.5	14.1	0.0000	31.164	54.855
5	PNA (%)	24.5	8.8	0.0001	8.653	22.793
6	P-sel (MFI)	103.140± 54.971	38.423± 29.334	0.0001	35.064	94.369
7	Ca <sup>++</sup>	30948.595± 20014.593	12160.278±436.038	0.0006	8747.015	28829.618
8	Male (%)	15(78.9)	16(88.9)	0.412		
9	History of Stroke (%)	19(100)				
10	Location of the stroke (%)					
	PACI	17(89.5)				
	LACI	2(10.52)				
11	TOAST classification (%)					
	SVD	10(52.6)				
	Cardioembolic	7(36.8)				
	Cryptogenic	2(10.5)				
12	History of comorbidities (%)					
	HTN (Yes)	10(52.6)	0	0.000		
	DM(Yes)	2(10.5)	0	0.213		
	Dyslipidemia	1	0	0.324		
13	Fazekas (%)					
	0					
	1	5(26.3)				
	2	9(47.4)				
	3	5(26.3)				
14	Hemisphere (%)					
	Right	2(10.6)				

	Left	3(15.8)				
	Bilateral	14(73.7)				
15	MRS (%)					
	3	2(10.5)				
	4	5(26.3)				
	5	11(57.9)				
	6	1(0.3)				
16	MRS Follow-up (%)					
	2	1(5.3)				
	3	4(21.1)				
	4	5(26.3)				
	5	3(15.8)				
	6	6(31.6)				

431

432

433 **Table 2: Area under the curve (ROC table)**

Variables	Area	Standard-Error	P-Value	95% CI	
				UPPER	LOWER
PMA	0.988	0.013	0.000	0.962	1.015
PNA	0.944	0.034	0.000	0.878	1.011
P-Selectin	0.819	0.071	0.001	0.680	0.958
Ca <sup>++</sup>	0.817	0.061	0.000	0.752	0.990

434

435 **Table 3: Factor correlation and Logistic Regression analysis**

Variables	Factor correlation	Logistic Regression			
		Eigen's value	$\beta$ -coefficient	95% CI	
				UPPER	LOWER
PMA	0.988				
PNA	0.944	0.3822	0.028	0.042	
P-Selectin	0.819	-0.0022	0.913	-0.042	
Ca <sup>++</sup>	0.817	0.0002	0.093	-0.000	

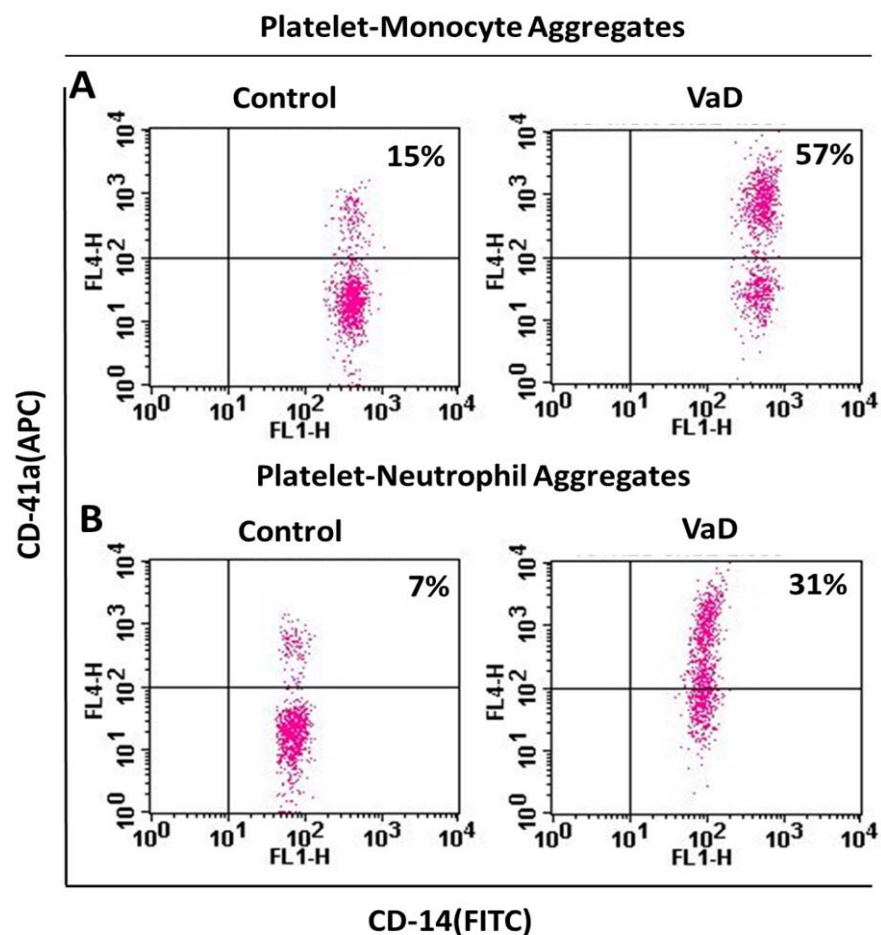
436

437

438 Figure Legends

439 • **Figure 1: Detection of platelet-monocyte and platelet-neutrophil aggregates in**  
440 **circulation:** A and B, flow cytometric analysis of monocyte-platelet and neutrophil-  
441 platelet aggregates, respectively, in whole blood stained with platelet-specific marker,  
442 anti-CD41a-APC and neutrophil/monocyte-specific marker, anti-CD14-FITC.  
443 Samples were obtained from control and different vascular dementia (VaD) groups as  
444 indicated. Amorphous gates were drawn for monocyte (high fluorescence and low  
445 SSC) and neutrophil (low fluorescence and high SSC) populations. Numbers in right  
446 upper quadrant represent percent of aggregates. C and D, corresponding scatter plot  
447 bar diagrams representing mean percent of PMA and PNA, respectively.

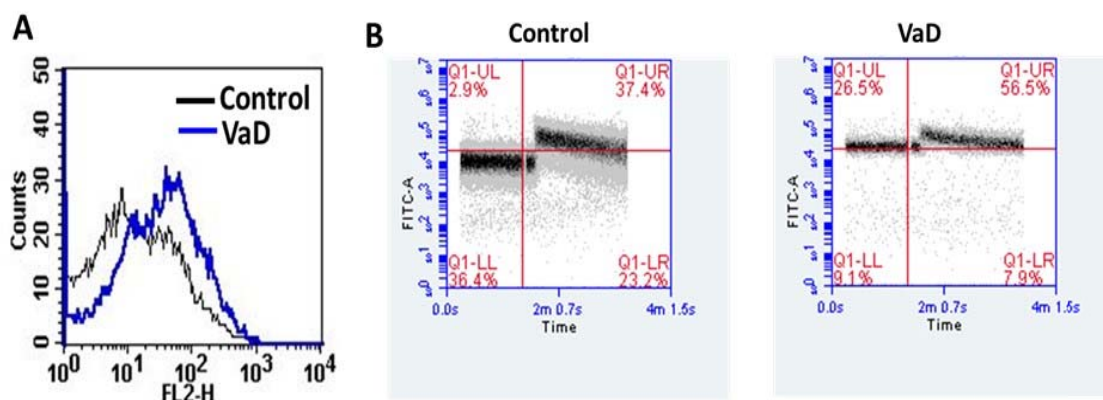
**Figure 1**



449

450 • **Figure 2. Exposure of P-selectin on surface of unstimulated platelets and**  
451 **determination of platelet population with raised intracellular calcium::** A, flow  
452 cytometric analysis of binding of anti-P-selectin antibody to surface of unstimulated  
453 platelets from VaD group and control group as indicated (representing mean  
454 fluorescence intensity). B, flow cytometry of Fluo-4-labeled platelets representing cell  
455 population with high fluorescence intensity in control (n=18), and VaD (n=19)  
456 groups, respectively, (representing mean fluorescence intensity over 1.5 min of a  
457 population before TRAP addition).

**Figure 2**



458

459

460

461

462

463

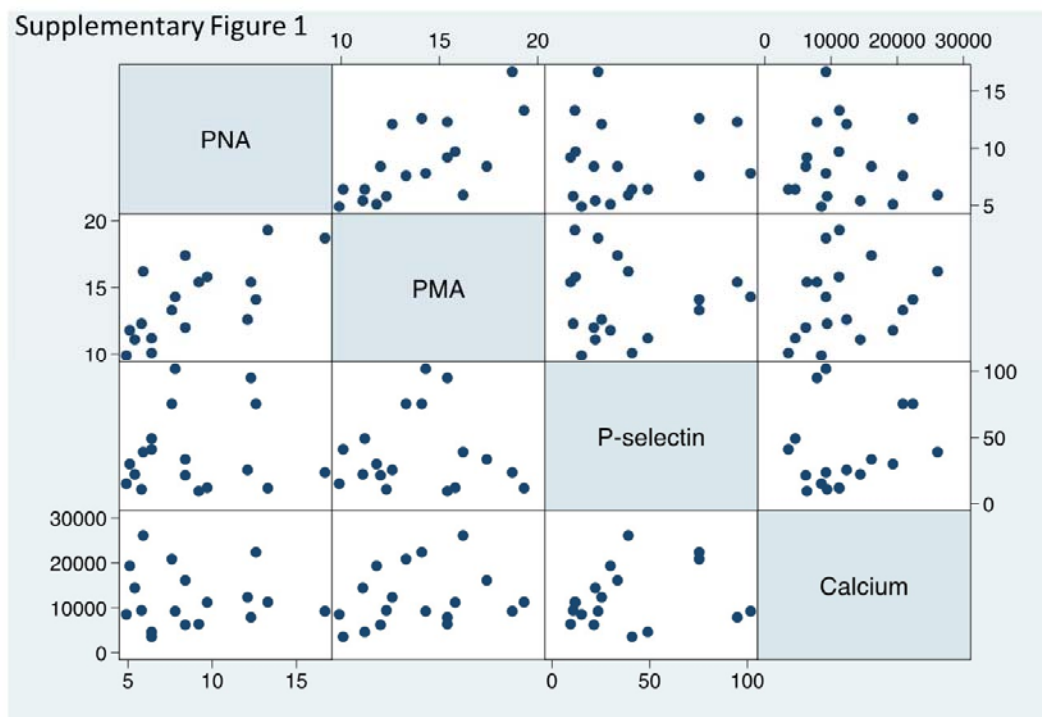
464

465

466

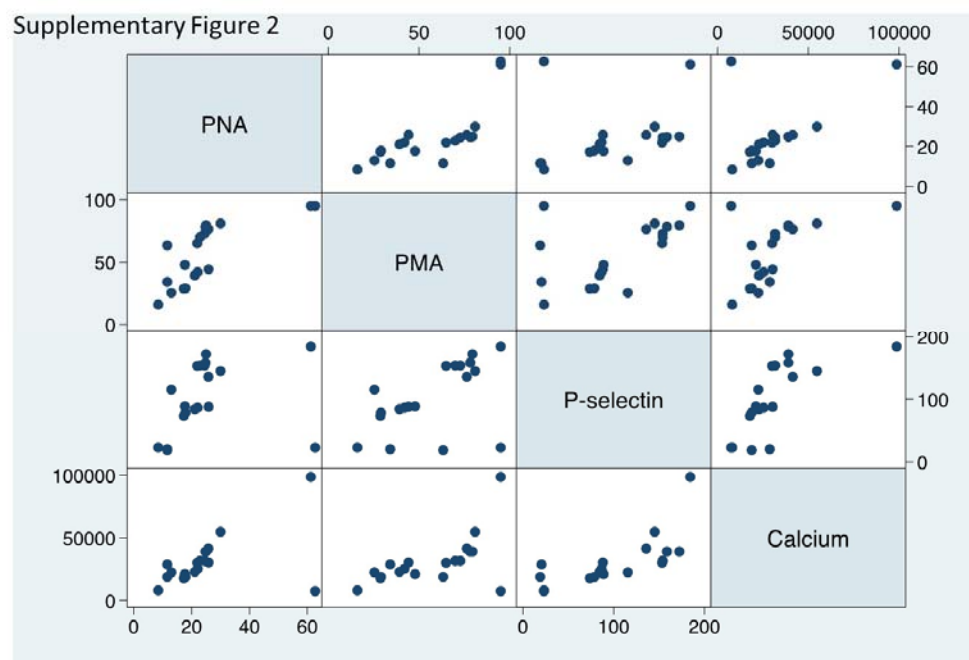
467

- 468 • **Supplementary Figure 1:** Scattered plot showing correlation between predictor  
469 variables in control group



470

- 471 • **Supplementary Figure 2:** Scattered plot showing predictor variable in diseased  
472 group



473



474 **Supplementary Tables**

475 **Supplementary Table 1: Correlation between Predictors for Control group**

	PNA	PMA	P-selectin	[Ca <sup>+2</sup> ] <sub>i</sub>
PNA	1.0000			
PMA (p-value)	0.6936 <b>(0.0014)</b>	1.0000		
P-selectin (p-value)	0.0896 (0.7237)	-0.0124 (0.9610)	1.0000	
[Ca <sup>+2</sup> ] <sub>i</sub> (p-value)	-0.0708 (0.7802)	0.2172 (0.3866)	0.1808 (0.4727)	1.0000

476

477 **Supplementary Table 2:-Correlation between Predictors for Case group**

	PNA	PMA	P-selectin	[Ca <sup>+2</sup> ] <sub>i</sub>
PNA	1.0000			
PMA (p-value)	0.7447 <b>(0.0003)</b>	1.0000		
P-selectin (p-value)	0.2724 (0.2592)	0.5214 <b>(0.0192)</b>	1.0000	
[Ca <sup>+2</sup> ] <sub>i</sub> (p-value)	0.5154 <b>(0.0239)</b>	0.5689 <b>(0.0110)</b>	0.6952 <b>(0.0010)</b>	1.0000

478

479

**Figure 1**

**Platelet-Monocyte Aggregates**

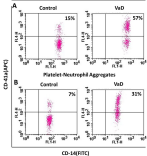


Figure 3

