

1 **Full title:** Carbapenem-resistant *Acinetobacter baumannii* at a hospital in Botswana: Detecting a
2 protracted outbreak using whole genome sequencing

3 **Short title:** Carbapenem-resistant *Acinetobacter baumannii* at a hospital in Botswana

4 **Authors:** Jonathan Strysko^{2,3,4}, Tefelo Thela⁵, Andries Feder³, Janet Thubuka⁵, Tichaona
5 Machiya⁵, Jack Mkubwa⁵, Kagiso Mochankana^{2,5}, Celda Tiroyakgosi⁶, Kgomotso Kgomanyane⁵,
6 Tlhalefo Dudu Ntereke⁴, Tshiamo Zankere⁴, Kwana Lechiile^{1,4}, Teresia Gatonye⁴, Chimwemwe
7 Viola Tembo⁴, Moses Vurayai¹, Naledi Mannathoko¹, Margaret Mokomane¹, Ahmed M
8 Moustafa^{3,7}, David M Goldfarb⁶, Melissa Richard-Greenblatt^{10,11} Carolyn McGann^{3,7}, Susan E
9 Coffin^{3,7}, Corrado Cancedda^{4,7}, Ebbing Lautenbach⁷, Dineo Bogoshi⁸, Anthony M Smith^{8,9}, Paul J
10 Planet^{3,7}

11
12 Faculties of Medicine & Health Sciences, University of Botswana, Gaborone, Botswana

13 ¹Department of Medical Laboratory Sciences

14 ²Department of Paediatric & Adolescent Health

15 ³Children's Hospital of Philadelphia, Philadelphia, Pennsylvania U.S.A.

16 ⁴Botswana-University of Pennsylvania Partnership, Gaborone, Botswana

17 ⁵Ministry of Health and Wellness, Gaborone, Botswana

18 ⁶Department of Pathology and Laboratory Medicine, University of British Columbia, Vancouver,
19 British Columbia, Canada

20 ⁷Perelman School of Medicine, University of Pennsylvania, Philadelphia, Pennsylvania U.S.A.

21 ⁸National Institute for Communicable Diseases, Johannesburg, South Africa

22 ⁹Department of Medical Microbiology, Faculty of Health Sciences, University of Pretoria,
23 Pretoria, South Africa

24 ¹⁰Public Health Ontario, Toronto, Ontario, Canada

25 ¹¹Department of Laboratory Medicine and Pathobiology, University of Toronto, Toronto, Canada

26 **Abstract**

27 Carbapenem-resistant *Acinetobacter baumannii* (CRAb) has emerged as a major and often fatal
28 cause of bloodstream infections among hospitalized patients in low- and middle-income countries
29 (LMICs). CRAb outbreaks are hypothesized to arise from reservoirs in the hospital environment,
30 but outbreak investigations in LMICs are seldom able to incorporate whole genome sequencing
31 (WGS) due to resource limitations. We performed WGS at the National Institute for
32 Communicable Diseases (Johannesburg, South Africa) on stored *A. baumannii* isolates (n=43)
33 collected during 2021–2022 from a 530-bed referral hospital in Gaborone, Botswana where CRAb
34 infection incidence was noted to be rising. This included blood culture isolates from patients (aged
35 2 days – 69 years), and environmental isolates collected at the hospital's 33-bed neonatal unit.
36 Multilocus sequence typing (MLST), antimicrobial/biocide resistance gene identification, and
37 phylogenetic analyses were performed using publicly accessible analysis pipelines. Single
38 nucleotide polymorphism (SNP) matrices were used to assess clonal lineage. MLST revealed
39 79% of isolates were sequence type 1 (ST1), including all 19 healthcare-associated blood isolates
40 and three out of five environmental isolates. Genes encoding for carbapenemases (*bla*_{NDM-1},
41 *bla*_{OXA-23}) and biocide resistance (*qacE*) were present in all 22 ST1 isolates. Phylogenetic analysis
42 of the ST1 clade demonstrated spatial clustering by hospital unit. Nearly identical isolates
43 spanned wide ranges in time (>1 year), suggesting ongoing transmission from environmental
44 sources. One highly similar clade (average difference of 2.3 SNPs) contained all eight neonatal
45 blood isolates and three environmental isolates from the neonatal unit. These results were critical
46 in identifying environmental reservoirs (e.g. sinks) and developing remediation strategies. Using
47 a phylogenetically informed approach, we also identified diagnostic genes useful for future
48 tracking of outbreak clones without the need for WGS. This work highlights the power of South-
49 South and South-North partnerships in building public health laboratory capacity in LMICs to
50 detect and contain the spread of antimicrobial resistance.

51 Introduction

52 Antimicrobial resistance (AMR) disproportionately affects low- and middle-income countries
53 (LMICs), with sub-Saharan Africa bearing the highest burden.(1) Carbapenem antibiotics are
54 considered last-line agents for infections with multidrug-resistant Gram-negative organisms, but
55 the prevalence of carbapenem resistance is now rapidly increasing globally.(2) In 2019,
56 carbapenem-resistant *Acinetobacter baumannii* (CRAb) was estimated to be the fourth leading
57 pathogen responsible for AMR-attributable mortality and the World Health Organisation has
58 named it a priority-one pathogen for research and development of new antibiotics.(1, 3)

59 CRAb has been closely linked with healthcare settings, owing to its unique ability to evade killing
60 by disinfectants and antimicrobials and to withstand desiccation on wet and dry surfaces.(4)
61 Intensive care units (ICU) in resource-limited settings can be epicenters of environmental CRAb
62 proliferation due to limited infection prevention and control (IPC) capacity to interrupt transmission
63 among patients who may be immunocompromised and have indwelling medical devices.(5)

64 Surveillance data from LMICs demonstrate a pattern of CRAb disproportionately affecting
65 neonates and infants. According to 2017-2019 laboratory-based sentinel surveillance data from
66 South Africa, infants made up the highest proportion of *A. baumannii* infections, the majority of
67 which were carbapenem-resistant.(6) A recent review of neonatal sepsis in seven LMICs in sub-
68 Saharan Africa and south Asia reported that *A. baumannii* was among the top five etiologies in all
69 countries surveyed.(7) Similarly, CRAb is now one of the top three causes of neonatal sepsis
70 among hospitalized neonates in India and South Africa.(8-10) At the tertiary referral hospital in
71 Botswana where this study was carried out, bloodstream infection surveillance records indicated
72 that, between 2012 and 2021, the proportion of *A. baumannii*-attributable neonatal sepsis rose
73 from 1% to 16% and was associated with a case fatality rate of 56%. (11, 12).

74 Molecular analyses have been used to detect protracted outbreaks of CRAB in settings where it
75 has become hyperendemic and have helped to shed light on transmission pathways.(13-16)
76 Whole genome sequencing (WGS), once considered cost-prohibitive, is proving to be a promising
77 tool for outbreak detection in LMICs when traditional epidemiologic approaches fall short. WGS
78 enables a range of analytic tools to characterize strain relatedness and identify relevant gene
79 mutations encoding for antimicrobial and biocide resistance. Genes encoding for
80 carbapenemases (β -lactamases (*bla*) including oxallase (OXA), and metallo- β -lactamases like
81 *bla*_{NDM-1}) are increasingly common among hospital CRAB isolates; the *bla*_{OXA-23} gene is the most
82 predominant gene encoding for carbapenemase in CRAB, and is carried on various mobile
83 elements including transposons, plasmids, and resistance islands.(17) Resistance to commonly-
84 used biocides like quaternary ammonium compounds (qAC) may contribute to environmental
85 persistence CRAB.(18)

86 In this study, we aimed to conduct WGS analysis on clinical and environmental *A. baumannii*
87 isolates collected from a tertiary referral hospital in Botswana where anecdotal reports of CRAB
88 infections were noted to be rising. We also present a set of diagnostic genes that can be used to
89 track the clones identified here without the need for WGS.

90 **Materials and Methods**

91 We performed WGS on all viable stored *A. baumannii* isolates collected from 1 March 2021 to 31
92 August 2022 at a 530-bed public tertiary referral hospital in Botswana with an 8-bed ICU and a
93 33-bed neonatal intensive care unit (NICU). During this period, *A. baumannii* isolate storage was
94 coordinated by a laboratory-based surveillance program which had undergone ethical review and
95 approval by the Health Research and Development Committee at Botswana's Ministry of Health
96 and Wellness and the Institutional Review Boards (IRB) at University of Botswana, University of
97 Pennsylvania, and the healthcare facility where this study was carried. Isolates were abstracted

98 on 1 September 2022 (authors did not have access to identifiable data) and were submitted to
99 the National Institute for Communicable Diseases (Johannesburg, South Africa), for WGS. We
100 obtained a waiver of written patient consent by the IRBs due to this being a retrospective
101 abstraction of surveillance data. The entire process, from sample collection to genomic analyses,
102 is illustrated in Figure 1.

103 **Figure 1. Sequence of events: From specimen collection to genomic analysis**

104 ***Clinical isolates:*** Blood cultures were collected by hospital staff following appropriate skin
105 antiseptics from patients when clinically indicated. These were then incubated at the hospital
106 microbiology laboratory using an automated system (BACT/ALERT®, BioMérieux). Isolate
107 identification was performed manually using Gram stain and colony morphology, followed by sub-
108 culturing and analytical profile index strip testing or a combination of motility, indole, hydrogen
109 sulphide, citrate, urease, and lysine testing. Blood cultures were classified as healthcare-
110 associated if they were collected more than 72 hours after hospitalization or, in the case of
111 neonates born at and never having left this healthcare facility, after the first day of life. All available
112 stored blood culture isolates previously identified as *A. baumannii* were sub-cultured prior to
113 submission for sequencing.

114 ***Environmental isolates:*** Isolates presumptively identified as *Acinetobacter* spp. from banked
115 environmental specimens collected as part of point prevalence surveys in this hospital's NICU
116 from April to June, 2021 were also revived and submitted for sequencing. Sites sampled included
117 high-touch surfaces, water, equipment, and hands of caregivers and healthcare workers. Samples
118 were collected using sterile nylon flocked swabs from sites without regard to epidemiologic links
119 to patients with infection. Samples were transported in sterile water and individually inoculated
120 onto chromogenic media within 24 hours for the selection and differentiation of extended-

121 spectrum β -lactamase-producing organisms (CHROMagar™ ESBL, Paris, France). Colonies
122 were identified using visual inspection of chromogenic media only.

123 **Whole Genome Sequencing:** Following initial phenotypic identification by the hospital's clinical
124 microbiology laboratories, all isolates were stored at -80° C until shipment of isolates to NICD
125 laboratories. At NICD, genomic DNA was extracted from bacteria using an Invitrogen PureLink
126 Microbiome DNA Purification Kit (Invitrogen, USA). WGS (Illumina NextSeq, USA) was performed
127 and DNA libraries were prepared using a Nextera DNA Flex Library Preparation Kit (Illumina),
128 followed by 2 x 150 base pair paired-end sequencing runs with ~80 times coverage. All WGS
129 methodologies were performed using the protocols and standard operating procedures as
130 prescribed by the manufacturers of the kits and equipment.

131 **Genome and Phylogenetic Analysis:** Taxonomic assignment, MLST, antimicrobial resistance
132 gene identification, and phylogenetic analyses were performed using publicly accessible analysis
133 pipelines at NICD and at the University of Pennsylvania / Children's Hospital of Philadelphia
134 Microbiome Center. A maximum likelihood tree was built using the Cladebreaker pipeline and
135 included the genomes from our collection plus 16 additional assembled genomes available on
136 GenBank,(19) chosen using the topgenome (-t) feature of WhatsGNU with 3 top genomes
137 specified.(20) A WhatsGNU database for *A. baumannii* was constructed from 14,627 publicly
138 available genomes downloaded using National Center for Biotechnology Information genome
139 download.(21) Bootstrap values, referring to the number of times the phylogenetic branching point
140 is re-observed after repeated sampling of the data with replacement, were assigned after 100
141 repetitions of sampling from nonparametric pseudoreplicates.(22) SNP matrices were used to
142 assess clonal lineage. There are no universal thresholds for determining whether any two CRAb
143 strains are part of the same outbreak, but SNP differences of less than three have been used to
144 conservatively define isolates as unequivocally part of an intra-hospital outbreak. (23) Genome-

145 wide association studies were conducted using a script which performs case/control allele scoring
146 based on WhatsGNU reports.(20) A full list of analysis pipelines used in genomic analysis is
147 included in S Table 1.

148 **Results**

149 Of 54 blood culture isolates identified as *A. baumannii* during the surveillance period at this
150 hospital, a total of 23 isolates were available for sequencing. Cultures had been taken from
151 patients aged 2 days to 69 years, and most (82%; 19/23) were healthcare-associated. All 23 blood
152 culture isolates were confirmed to be *A. baumannii* by WGS. Out of 20 environmental isolates
153 identified as *A. baumannii* using chromogenic media, only 5 were confirmed as *A. baumaannii*.
154 The remaining environmental isolates were identified as other *Acinetobacter* spp. (n=3), *Serratia*
155 spp. (n=6), *Pseudomonas* spp. (n=3), *Exiguobacterium* spp. (n=1), *Microbacterium* spp. (n=1),
156 and an unclassified organism.

157 **Sequence typing and characterization:** MLST analysis revealed 79% (22/28) of *A. baumannii*
158 isolates to be sequence type 1 (ST1), including all 19 healthcare-associated blood isolates and
159 60% (3/5) of the environmental isolates, and phylogenetic analysis confirmed the monophyly of
160 these genomes (S Figure 1). None of the 4 community-associated blood isolates were identified
161 as ST1 and were unrelated to each other (ST976, ST193, and two unidentified MLST). Genes
162 encoding for carbapenemases (*bla*_{NDM-1}, *bla*_{OXA-23}) and biocide resistance (*qacE*) were present in
163 all 22 ST1 isolates; mutations associated with colistin resistance were not identified.

164 **Phylogenetic analysis:** Phylogenetic analysis of the ST1 clade demonstrated spatial clustering
165 by hospital unit. Very closely related isolates spanned wide ranges in time (>1 year), suggesting
166 ongoing transmission from environmental sources (Figure 2). A neonatal clade (average
167 difference 2.3, range 0-5 SNPs) containing all eight neonatal blood isolates were closely
168 associated with three environmental isolates from the neonatal unit: a sink drain, bed rail, and a

169 healthcare worker's hand. Three isolates from one adult patient, from 3 separate blood cultures
170 sent on the same day, were also included in this clade, however there was no clear epidemiologic
171 link identified among the neonatal patients. The tree also suggested the existence of a local clade
172 that contains both the neonatal clade as well as other isolates from the same hospital
173 (average difference 13.8, range 0-30 SNPs).

174 **Figure 2. Phylogenetic tree (left) with branch points labelled with bootstrap values (0-100)**
175 **and single nucleotide polymorphism differences (right) of sequence type 1 (ST1) clinical**
176 **and environmental carbapenem-resistant *Acinetobacter baumannii* (CRAb) isolates**
177 **collected from April 2021 – August 2022**

178 **Diagnostic Alleles:** Using the program WhatsGNU,(20) we interrogated our whole genome
179 datasets for diagnostic protein alleles that defined each of the clades in our tree. We required
180 each allele to have 100% specificity and 100% sensitivity for the genomes in each clade, and a
181 GNU score of 0 indicating that this allele is never seen in the *Acinetobacter baumannii* whole
182 genome database. The neonatal clade was characterized by 11 protein alleles with various
183 predicted functions, and the local ST1 clade that includes the neonatal clade was characterized
184 by 10 protein alleles most of which had no predicted function (S2 Figure). Nucleotide and amino
185 acid sequences for each of these genes is included as supplementary data (S3 Appendix).

186 **Discussion**

187 We detected a protracted hospital CRAb outbreak with transmission spanning at least 18 months
188 using WGS. All healthcare-associated strains shared the same clonal lineage and many occurred
189 in newborns who had never left the hospital, suggesting that ongoing transmission was facilitated
190 by the presence of reservoirs in the hospital environment. Although only five environmental *A.*
191 *baumannii* isolates were available for analysis, three shared the same clonal, extremely similar

192 lineage as the healthcare-associated isolates and suggested that sink drains were likely
193 reservoirs and hands of healthcare workers may have served as transmission vehicles.

194 Although the isolates sequenced generally clustered spatially by ward, their shared clonal lineage
195 (ST1) and the case of an adult patient closely related to the “neonatal” clade raises questions
196 around shared exposures across wards and reservoirs yet to be identified. These exposures could
197 include: healthcare workers cross-covering wards, shared cleaning equipment (e.g. mops and
198 buckets), or shared plumbing. Of note, no *A. baumannii* was isolated from fresh tap water samples
199 obtained from water taps serving the NICU sinks during the environmental point prevalence
200 surveys from which this analysis drew its environmental isolates.(24) This finding lends credence
201 to the hypothesis that contamination arising from the sink is likely due to retrograde splashing of
202 water from the sink drain onto either a patient or healthcare worker rather than from intrinsically
203 contaminated municipal tap water; backsplash is a likely source of contamination of washbasins,
204 tap handles, hands, and environment immediately surrounding a sink. Our study is amongst the
205 first in an LMIC setting to utilize temporal sequencing of clinical and sink drainage isolates to
206 demonstrate that the sink drains are a likely reservoir.(25)

207 Sinks, although important for hand hygiene, are often used for other purposes, and can harbor
208 robust biofilms and serve as a reservoir for multidrug-resistant organisms.(26-28) These difficult-
209 to-dislodge biofilms necessitate reservoir remediation strategies, especially for hospitals in
210 resource-limited settings. Some evidence supports radical measures to eliminate water-related
211 reservoirs including “water-free patient care” (i.e. complete removal of sinks from patient care
212 areas).(29) However, these interventions have not been well-tested in high-resource settings, and
213 their feasibility in resource-limited settings is unclear; sink re-design and remediation strategies
214 (e.g. plumbing trap stop valves, boiling water, splashguards) may be more easily implemented in
215 these settings.(30, 31)

216 Aside from reservoir remediation, there is a general need for rapid adaptation of IPC protocols
217 appropriate for resource-limited settings. Use of invasive medical devices in LMICs has outpaced
218 the IPC measures needed to maintain and safely reprocess them. Additionally, the global
219 healthcare worker shortage has resulted in too few staff to implement IPC measures.(32)
220 Multimodal IPC bundles are needed which deploy a combination of optimization of hand hygiene,
221 colonization-based patient screening, environmental sampling, and enhanced terminal and non-
222 terminal cleaning and disinfection.(33) Novel strategies to task shift some cleaning and
223 disinfection activities to caregivers may also be worth consideration.

224 This study was conducted during the height of the COVID-19 pandemic and the extent to which
225 the rise in CRAb incidence at this facility was related to the pandemic is unclear. Several regions
226 in both high-income settings and LMICs reported an increase in CRAb incidence in 2020-2021,
227 presumably as a result of the surge in ICU admissions during the COVID-19 pandemic.(34-36)
228 Of note, the environmental point prevalence surveys referenced to in this study were conducted
229 early in 2021 and, over the course of the six-month study, a temporal increase in *Acinetobacter*
230 spp. recovery was observed, corresponding with both an increase in clinical CRAb infection and
231 COVID-19 incidence hospital-wide.(24) The high prevalence of the *qacE* gene among CRAb
232 isolates in this analysis also raise questions about the unintended consequences caused by the
233 selective pressure of excess biocide use, particularly during the COVID-19 pandemic.(37) The
234 lack of strain diversity over an extended period may suggest that *Acinetobacter* spp. is capable
235 of persisting in the hospital environmental reservoirs at no fitness cost despite competition from
236 other organisms or use of disinfectants.

237 This analysis highlights the power of WGS to solve complex public health problems in LMICs
238 bearing the highest burden of AMR. As WGS technologies become cheaper and open-source
239 analytic tools more accessible, broad support for the adaptation of WGS in public health
240 laboratories in LMICs is needed.(38) South-South and North-South collaborations like these will

241 be pivotal in supporting technical development and in ensuring sustainable implementation of
242 WGS into national action plans to combat AMR.

243 Even as LMICs welcome WGS technology into the public health laboratory ecosystem,
244 alternative, low-cost strategies are needed for molecular tracking in the midst of outbreaks like
245 these. Identification of diagnostic alleles for clade typing described here, is an emerging field
246 promising a low-cost method of tracking outbreak strains.(39) There are two major benefits to this
247 diagnostic approach. First, new isolates can be screened for inclusion in each clade without full-
248 scale phylogenetic analysis. Second, amplification of these genes and sequencing by standard
249 Sanger sequencing can be done at a fraction of the cost of WGS. PCR primers could also be
250 designed to amplify these genes directly from clinical samples without the need for culture. It may
251 also be the case that the alleles detected here may have biological significance that would inform
252 future studies about the fitness and biological properties of outbreak strains.

253 **Limitations:** This study was limited by the small number of environmental *A. baumannii* isolates
254 available for sequencing. Identifying genetically linked isolates from patient and environmental
255 samples does not prove the sampled site is the definitive point-source. Because this clonal type
256 was recovered from multiple environmental sites, it is likely that there may have been additional
257 reservoirs and vehicles not identified because of the limited nature of the environmental sampling,
258 thus obscuring the full spectrum of transmission. Future investigations would incorporate more
259 samples and would prioritize sites epidemiologically linked to patients with confirmed infection.
260 Additionally, the use of chromogenic media to screen for *A. baumannii* in environmental samples
261 had low specificity; future studies would take advantage of media designed specifically for *A.*
262 *baumannii* recovery, as well as automated identification of environmental isolates prior to
263 sequencing.

264 **Conclusions**

265 This report demonstrates the power of WGS to detect outbreaks when traditional epidemiologic
266 approaches fall short. Additionally, our work makes a case for public health laboratories in LMICs
267 to be equipped with sequencing technologies so WGS can be leveraged in the regions bearing
268 the highest burden of AMR. South-South and North-South partnerships, like the ones described
269 in this manuscript, are critical in building public health laboratory infrastructure to detect and
270 contain health threats caused by AMR. This work also highlights the importance of environmental
271 sampling to identify and remediate reservoirs (e.g. sink drains) and vehicles (e.g. hands,
272 equipment) within the healthcare environment and is a call-to-action for broader support for IPC
273 teams in resource-limited settings.

274 **Acknowledgments**

275 Whole-genome sequencing of bacterial isolates was made possible by the SEQAFRICA project
276 supported by the Department of Health and Social Care's Fleming Fund using UK aid. The
277 views expressed in this publication are those of the authors and not necessarily those of the UK
278 Department of Health and Social Care or its Management Agent, Mott MacDonald.

279 **References**

- 280 1. Antimicrobial Resistance C. Global burden of bacterial antimicrobial resistance in 2019:
281 a systematic analysis. *Lancet*. 2022;399(10325):629-55.
- 282 2. Manenzhe RI, Zar HJ, Nicol MP, Kaba M. The spread of carbapenemase-producing
283 bacteria in Africa: a systematic review. *J Antimicrob Chemother*. 2015;70(1):23-40.
- 284 3. WHO. Prioritization of pathogens to guide discovery, research and development of
285 new antibiotics for drug-resistant bacterial infections, including tuberculosis. Geneva: World
286 Health Organization; 2017(WHO/EMP/IAU/2017.12). 2017.
- 287 4. Green ER, Fakhoury JN, Monteith AJ, Pi H, Giedroc DP, Skaar EP. Bacterial
288 hydrophilins promote pathogen desiccation tolerance. *Cell Host Microbe*. 2022;30(7):975-87 e7.
- 289 5. Garnacho-Montero J, Dimopoulos G, Poulakou G, Akova M, Cisneros JM, De Waele J,
290 et al. Task force on management and prevention of *Acinetobacter baumannii* infections in the
291 ICU. *Intensive Care Med*. 2015;41(12):2057-75.
- 292 6. Perovic O, Duse A, Chibabhai V, Black M, Said M, Prentice E, et al. *Acinetobacter*
293 *baumannii* complex, national laboratory-based surveillance in South Africa, 2017 to 2019. *PLoS*
294 *One*. 2022;17(8):e0271355.
- 295 7. Milton R, Gillespie D, Dyer C, Taiyari K, Carvalho MJ, Thomson K, et al. Neonatal sepsis
296 and mortality in low-income and middle-income countries from a facility-based birth cohort: an
297 international multisite prospective observational study. *Lancet Glob Health*. 2022;10(5):e661-
298 e72.

- 299 8. Pillay D, Naidoo L, Swe Swe-Han K, Mahabeer Y. Neonatal sepsis in a tertiary unit in
300 South Africa. *BMC Infect Dis.* 2021;21(1):225.
- 301 9. Shah MH, McAleese S, Kadam S, Parikh T, Vaidya U, Sanghavi S, et al. Emerging
302 Antibiotic Resistance Patterns in a Neonatal Intensive Care Unit in Pune, India: A 2-Year
303 Retrospective Study. *Front Pediatr.* 2022;10:864115.
- 304 10. Thomas R O-EC, Motsoaledi N, Sharland M, Clements M and Velaphi S. Incidence and
305 All-Cause Mortality Rates in Neonates Infected With Carbapenem Resistant Organisms. *Front*
306 *Trop Dis* 2022;3:832011. doi: 10.3389/fitd.2022.832011.
- 307 11. Mudzikati L. DA. Neonatal septicaemia: prevalence and antimicrobial susceptibility
308 patterns of common pathogens at Princess Marina Hospital, Botswana. *S Afr J Infect Dis.*
309 2015;30:108-33.
- 310 12. Strysko J, Machiya T, Lechiile K, et al. Carbapenem-resistant *Acinetobacter baumannii*
311 at a tertiary-care hospital in Botswana: Focus on perinatal environmental exposures. (2022).
312 *Antimicrobial Stewardship & Healthcare Epidemiology*, 2(S1), S79-S79.
313 doi:10.1017/ash.2022.206.
- 314 13. Huber CA, Sartor AL, McOdimba F, Shah R, Shivachi P, Sidjabat HE, et al. Outbreaks of
315 multidrug-resistant *Acinetobacter baumannii* strains in a Kenyan teaching hospital. *J Glob*
316 *Antimicrob Resist.* 2014;2(3):190-3.
- 317 14. Makke G, Bitar I, Salloum T, Panossian B, Alousi S, Arabaghian H, et al. Whole-
318 Genome-Sequence-Based Characterization of Extensively Drug-Resistant *Acinetobacter*
319 *baumannii* Hospital Outbreak. *mSphere.* 2020;5(1).
- 320 15. Brito BP, Koong J, Wozniak A, Opazo-Capurro A, To J, Garcia P, et al. Genomic
321 Analysis of Carbapenem-Resistant *Acinetobacter baumannii* Strains Recovered from Chilean
322 Hospitals Reveals Lineages Specific to South America and Multiple Routes for Acquisition of
323 Antibiotic Resistance Genes. *Microbiol Spectr.* 2022;10(5):e0246322.
- 324 16. Gramatiece A, Silamikelis I, Zahare I, Urtans V, Zahare I, Dimina E, et al. Control of
325 *Acinetobacter baumannii* outbreak in the neonatal intensive care unit in Latvia: whole-genome
326 sequencing powered investigation and closure of the ward. *Antimicrob Resist Infect Control.*
327 2019;8:84.
- 328 17. Mugnier PD, Poirel L, Naas T, Nordmann P. Worldwide dissemination of the blaOXA-23
329 carbapenemase gene of *Acinetobacter baumannii*. *Emerg Infect Dis.* 2010;16(1):35-40.
- 330 18. Gomaa FAM, Helal ZH, Khan MI. High Prevalence of bla(NDM-1), bla(VIM), qacE, and
331 qacEDelta1 Genes and Their Association with Decreased Susceptibility to Antibiotics and
332 Common Hospital Biocides in Clinical Isolates of *Acinetobacter baumannii*. *Microorganisms.*
333 2017;5(2).
- 334 19. Sayers EW, Cavanaugh M, Clark K, Pruitt KD, Schoch CL, Sherry ST, et al. GenBank.
335 *Nucleic Acids Res.* 2021;49(D1):D92-D6.
- 336 20. Moustafa AM, Planet PJ. WhatsGNU: a tool for identifying proteomic novelty. *Genome*
337 *Biol.* 2020;21(1):58.
- 338 21. Blin K. NCBI-genome-download Github [Available from: [https://github.com/kblin/ncbi-](https://github.com/kblin/ncbi-genome-download)
339 [genome-download](https://github.com/kblin/ncbi-genome-download)].
- 340 22. Felsenstein J. Confidence Limits on Phylogenies: An Approach Using the Bootstrap.
341 *Evolution.* 1985;39(4):783-91.
- 342 23. Fitzpatrick MA, Ozer EA, Hauser AR. Utility of Whole-Genome Sequencing in
343 Characterizing *Acinetobacter* Epidemiology and Analyzing Hospital Outbreaks. *J Clin Microbiol.*
344 2016;54(3):593-612.
- 345 24. Vurayai M, Strysko J, Kgomanyane K, Bayani O, Mokomane M, Machiya T, et al.
346 Characterizing the bioburden of ESBL-producing organisms in a neonatal unit using
347 chromogenic culture media: a feasible and efficient environmental sampling method. *Antimicrob*
348 *Resist Infect Control.* 2022;11(1):14.

- 349 25. Volling C, Thomas S, Johnstone J, Maltezou HC, Mertz D, Stuart R, et al. Development
350 of a tool to assess evidence for causality in studies implicating sink drains as a reservoir for
351 hospital-acquired gammaproteobacterial infection. *J Hosp Infect.* 2020;106(3):454-64.
- 352 26. Grabowski M LJ, Gunnell B, Enfield K, Carpenter R, Barnes L, Mathers AJ.
353 Characterizations of handwashing sink activities in a single hospital medical intensive care unit.
354 *J Hosp Infect.* 2018;100(3):e115-e22.
- 355 27. Roux D, Aubier B, Cochard H, Quentin R, van der Mee-Marquet N, Centre
356 HAIPGotRdHd. Contaminated sinks in intensive care units: an underestimated source of
357 extended-spectrum beta-lactamase-producing Enterobacteriaceae in the patient environment. *J*
358 *Hosp Infect.* 2013;85(2):106-11.
- 359 28. Voigt AM, Faerber HA, Wilbring G, Skutlarek D, Felder C, Mahn R, et al. The occurrence
360 of antimicrobial substances in toilet, sink and shower drainpipes of clinical units: A neglected
361 source of antibiotic residues. *Int J Hyg Environ Health.* 2019;222(3):455-67.
- 362 29. De-Las-Casas-Camara G, Collados-Arroyo V, Garcia-Torrejon MC, Munoz-Egea MC,
363 Martin-Rios MD. Impact of sink removal from intensive care unit rooms on the consumption of
364 antibiotics and on results of Zero Resistance Project. *Med Clin (Barc).* 2022;158(1):1-6.
- 365 30. Volling C, Ahangari N, Bartoszko JJ, Coleman BL, Garcia-Jeldes F, Jamal AJ, et al. Are
366 Sink Drainage Systems a Reservoir for Hospital-Acquired Gammaproteobacteria Colonization
367 and Infection? A Systematic Review. *Open Forum Infect Dis.* 2021;8(2):ofaa590.
- 368 31. Ofstead CL, Hopkins KM, Daniels FE, Smart AG, Wetzler HP. Splash generation and
369 droplet dispersal in a well-designed, centralized high-level disinfection unit. *Am J Infect Control.*
370 2022.
- 371 32. Boniol M, Kunjumen T, Nair TS, Siyam A, Campbell J, Diallo K. The global health
372 workforce stock and distribution in 2020 and 2030: a threat to equity and 'universal' health
373 coverage? *BMJ Glob Health.* 2022;7(6).
- 374 33. Meschiari M, Lopez-Lozano JM, Di Pilato V, Gimenez-Esparza C, Vecchi E, Bacca E, et
375 al. A five-component infection control bundle to permanently eliminate a carbapenem-resistant
376 *Acinetobacter baumannii* spreading in an intensive care unit. *Antimicrob Resist Infect Control.*
377 2021;10(1):123.
- 378 34. Boral J, Genc Z, Pinarlik F, Ekinci G, Kuskucu MA, Irkoren P, et al. The association
379 between *Acinetobacter baumannii* infections and the COVID-19 pandemic in an intensive care
380 unit. *Sci Rep.* 2022;12(1):20808.
- 381 35. Gottesman T, Fedorowsky R, Yerushalmi R, Lellouche J, Nutman A. An outbreak of
382 carbapenem-resistant *Acinetobacter baumannii* in a COVID-19 dedicated hospital. *Infect Prev*
383 *Pract.* 2021;3(1):100113.
- 384 36. Perez S, Innes GK, Walters MS, Mehr J, Arias J, Greeley R, et al. Increase in Hospital-
385 Acquired Carbapenem-Resistant *Acinetobacter baumannii* Infection and Colonization in an
386 Acute Care Hospital During a Surge in COVID-19 Admissions - New Jersey, February-July
387 2020. *MMWR Morb Mortal Wkly Rep.* 2020;69(48):1827-31.
- 388 37. Chen B, Han J, Dai H, Jia P. Biocide-tolerance and antibiotic-resistance in community
389 environments and risk of direct transfers to humans: Unintended consequences of community-
390 wide surface disinfecting during COVID-19? *Environ Pollut.* 2021;283:117074.
- 391 38. AMR NGRUoGSo. Whole-genome sequencing as part of national and international
392 surveillance programmes for antimicrobial resistance: a roadmap. *BMJ Glob Health.* 2020;5(11).
- 393 39. Carolus H, Jacobs S, Lobo Romero C, Deparis Q, Cuomo CA, Meis JF, et al. Diagnostic
394 Allele-Specific PCR for the Identification of *Candida auris* Clades. *J Fungi (Basel).* 2021;7(9).
- 395



Blood cultures collected from patients and swab samples collected from the hospital environment are cultured and phenotypically identified

Cultured bacterial isolates are preserved prior to DNA extraction

Extracted DNA is reassembled and sequenced using next-generation sequencing technology

Sequences are compared with global database of sequences to confirm taxonomy and determine lineage (MLST)

Sequences are scanned to identify genes known to confer resistance to antimicrobial agents and biocides

Sequences are compared to determine strain-to-strain relatedness through construction of a phylogenetic tree

Figure 1: Sequence of events: From specimen collection to genomics

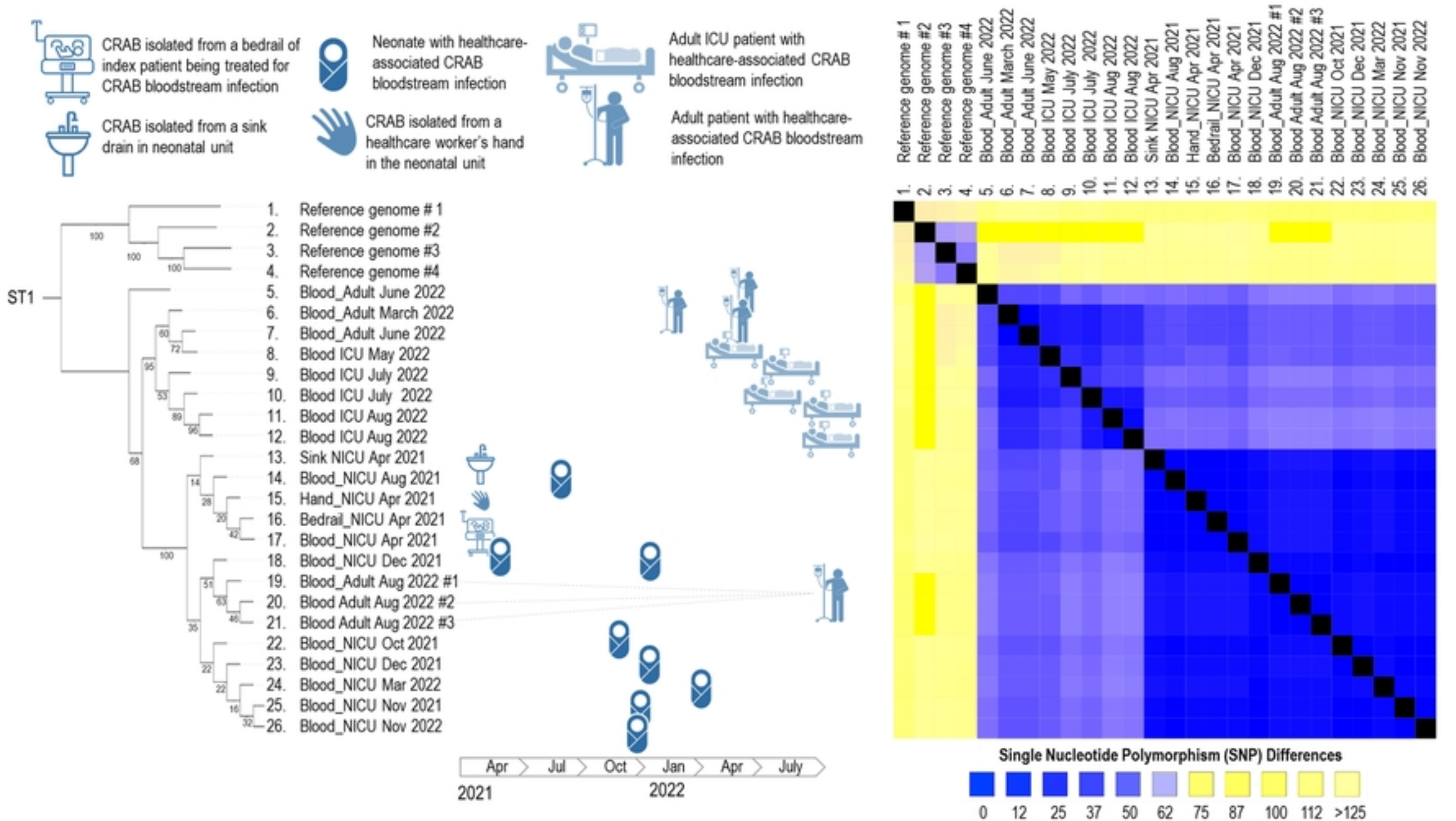


Figure 2. Phylogenetic tree with branch points labelled with boot