

1 **Association Between Preoperative Myocardial Perfusion Imaging and Cardiac Events**  
2 **after Elective Noncardiac Surgery**

3

4

5 Seong-Bong Wee, MD,<sup>1</sup> Cheol Hyun Lee, MD,<sup>2</sup> Tae Joon Jun, PhD,<sup>3</sup> Jung-Min Ahn, MD,<sup>1</sup>  
6 Jeong Hwan Yook, MD,<sup>4</sup> Jae-Sik Nam, MD,<sup>5</sup> In-Cheol Choi, MD,<sup>5</sup> Dae Hyuk Moon, MD,<sup>6</sup>  
7 Sangwon Han, MD,<sup>6</sup> Hoyun Kim, MD,<sup>1</sup> Yeonwoo Choi, MD,<sup>1</sup> Jinho Lee, MD,<sup>1</sup> Sangyong  
8 Cho, MD,<sup>1</sup> Tae Oh Kim, MD,<sup>1</sup> Do-Yoon Kang, MD,<sup>1</sup> Pil Hyung Lee, MD,<sup>1</sup> Duk-Woo Park,  
9 MD,<sup>1</sup> Soo-Jin Kang, MD,<sup>1</sup> Seung-Whan Lee, MD,<sup>1</sup> Young-Hak Kim, MD,<sup>1</sup> Cheol Whan Lee,  
10 MD,<sup>1</sup> Seong-Wook Park, MD,<sup>1</sup> David J Cohen, MD,<sup>7</sup> and Seung-Jung Park, MD.<sup>1</sup>

11

12 <sup>1</sup>Division of Cardiology, Heart Institute, Asan Medical Center, University of Ulsan, Seoul,  
13 Korea; <sup>2</sup>Division of Cardiology, Department of Internal Medicine, Keimyung University  
14 Dongsan Hospital, Daegu, Korea; <sup>3</sup>Big Data Research Center, Asan Institute for Life  
15 Sciences, Asan Medical Center, Seoul, Korea; <sup>4</sup>Department of Surgery, Asan Medical Center,  
16 University of Ulsan College of Medicine, Seoul, Korea; <sup>5</sup>Department of Anesthesiology and  
17 Pain Medicine, Asan Medical Center, University of Ulsan College of Medicine, Seoul, Korea;  
18 <sup>6</sup>Department of Nuclear Medicine, Asan Medical Center, University of Ulsan, College of  
19 Medicine, Seoul, Korea; <sup>7</sup>Department of Cardiology, Saint Francis Hospital and  
20 Cardiovascular Research Foundation, NY, NY 10019, USA.

21

22 The first two authors (SB Wee and CH Lee) equally contributed to this paper.

23

24 Abstract Word Count: 290

25 Main Text Word Count: 2942

26

27 ***Address for correspondence:***

28 Jung-Min Ahn, MD

29 Department of Cardiology, Asan Medical Center, University of Ulsan College of Medicine,

30 88, Olympic-ro 43-gil, Songpa-gu, Seoul, 05505, Korea

31 Telephone: +82-2-3010-5904

32 Fax: +82-2-487-5918

33 E-mail: [drjmahn@gmail.com](mailto:drjmahn@gmail.com)

34

## Abstract

35 **Background** There remains a lack of robust evidence regarding the prognostic value of  
36 myocardial perfusion imaging (MPI) before noncardiac surgery in large and diverse patient  
37 populations.

38 **Methods** This retrospective observational cohort study from single, tertiary, high surgical  
39 volume center in South Korea included 82,441 patients aged >40 years who underwent MPI  
40 using pharmacologic stress single photon emission computed tomography within 6 months  
41 before elective noncardiac surgery from January 2000 to December 2021. Results of MPI  
42 were classified as abnormal (any fixed or reversible perfusion defect) vs normal MPI before  
43 noncardiac surgery. The primary outcome was a composite of cardiac death or myocardial  
44 infarction within 30 days.

45 **Results** Among the 82441 patients (mean±standard deviation age, 65.7±9.6 years; 47417  
46 [57.5%] men), 184 (0.2%) experienced cardiac death or myocardial infarction within 30 days  
47 after noncardiac surgery. MPI were abnormal in 5603 patients (6.8%). Compared with a  
48 normal MPI, an abnormal MPI had a higher risk of the primary outcome (crude incidence,  
49 1.2% vs 0.1%; adjusted odds ratio, 4.64; 95% confidence interval, 3.29-6.50;  $P<.001$ ). The  
50 presence of an abnormal MPI improved discrimination for the primary outcome (area under  
51 the receiver operating characteristic curve with MPI vs without MPI (0.77 vs 0.73;  $P<0.001$ ))  
52 and significantly increased net reclassification improvement (0.26; 95% confidence interval,  
53 0.11-0.40;  $P<.001$ ). Among patients with an abnormal MPI, 378 (6.7%) underwent pre-  
54 operative coronary revascularization; however, this was not associated with a lower risk of  
55 the primary outcome ( $P=.56$ ).

56 **Conclusion** An abnormal myocardial perfusion imaging appeared to be an important risk

57 factor for adverse postoperative events and provided additional prognostic value for patients  
58 undergoing noncardiac surgery. Nevertheless, preoperative MPI was limited by its low  
59 positive predictive value for postoperative cardiac events, leading to potentially unnecessary  
60 coronary revascularization procedures with unproven prognostic value.

61 **Clinical Perspectives**

62 **What is new?**

- 63       • This study included the largest population to date and included a broad spectrum of  
64       patient and surgical procedures compared with previous studies limited by relatively  
65       small sample sizes and low event rates.
- 66       • Preoperative abnormal MPI results were significantly associated with the  
67       postoperative risk of cardiac death and myocardial infarction in patients undergoing  
68       noncardiac surgery, and provided incremental prognostic value beyond clinical  
69       assessment only.

70

71 **What are the clinical implications?**

- 72       • Our study suggested that MPI appears warranted, particularly for patients with a  
73       considerable surgical risk.
- 74       • However, its low positive predictive value, and unproven prognostic value of  
75       coronary revascularization triggered by MPI should be taken into account in the  
76       clinical practice.

77 **Introduction**

78 Every year,  $\geq 200$  million adults undergo major noncardiac surgery and its number is still  
79 increasing.<sup>1,2</sup> Despite the overall safety of contemporary noncardiac surgery, approximately  
80 10% of these patients experience post-operative complications.<sup>3</sup> Cardiovascular  
81 complications remain the leading cause of death within 30 days of noncardiac surgery.<sup>4</sup>  
82 Therefore, identification of patients at high cardiovascular risk during preoperative  
83 consultation is important.

84 Previous studies have revealed that abnormal features upon myocardial perfusion  
85 imaging (MPI) indicate an increased risk of perioperative cardiac complications.<sup>5</sup> Current  
86 practice guidelines recommend stress MPI prior to non-cardiac surgery for patients with both  
87 elevated risk of major adverse cardiac events and poor functional capacity especially if  
88 testing impacts decision-making or perioperative care.<sup>4</sup> The uncertain value of pre-operative  
89 MPI derives from its low diagnostic yield, the unclear clinical benefit of preoperative  
90 revascularization triggered by its results, and the potential for unnecessary delays of surgical  
91 treatment.<sup>6,7</sup> Notably, previous studies on preoperative MPI were limited by their small  
92 samples and numbers of events.<sup>8</sup> Most studies were performed on the highest-risk patients  
93 (eg, those undergoing vascular surgery) decades ago, and the application of those results in  
94 today's practice is unclear, given advances in both surgery and perioperative care. In addition,  
95 the predictive discrimination associated with MPI has not been adequately compared with  
96 those derived from preoperative risk calculators alone.<sup>9</sup> Nevertheless, preoperative MPI and  
97 subsequent revascularization are frequently performed in real-world practice to evaluate  
98 cardiac risk in an effort to prevent perioperative cardiac complications.<sup>10-12</sup>

99 To address these gaps in contemporary evidence, we performed a retrospective, real-

100 world study: (1) determine the prognostic value of preoperative MPI to predict cardiac events  
101 after elective noncardiac surgery; and (2) examine the clinical benefit of selective coronary  
102 angiography and revascularization in response to abnormal MPI.

103

## 104 **Methods**

### 105 **Study Design and Study Population**

106 This was a single-center, retrospective observational cohort study, and was conducted using  
107 data from the Asan Biomedical Research Environment (ABLE), which is a de-identified  
108 clinical database of Asan Medical Center, a 2700-bed tertiary hospital in Seoul, South Korea.  
109 This data warehouse contains all medical records of our center, including electronic medical  
110 records, international classification of disease codes, laboratory findings, imaging data, and  
111 medications in an anonymized form.<sup>13</sup>

112 The study population was drawn from all patients who underwent MPI in the 6 months  
113 prior to elective noncardiac surgery under general anesthesia between January 2000 and  
114 December 2021. Patients were excluded if they met any of the following criteria: younger  
115 than 40 years of age; undergoing an emergency operation; experiencing acute myocardial  
116 infarction in the month before surgery; undergoing cardiac surgery; undergoing nonsurgical  
117 procedures (eg, bronchoscopy, endoscopy, cystoscopy, and percutaneous vascular or  
118 nonvascular procedures); undergoing minor surgery with minimal sedation or local  
119 anesthesia, such as skin, dental, and ophthalmologic procedures. Only the index procedure of  
120 patients undergoing multiple eligible procedures during the study period was used for  
121 analyses. Additional inclusion and exclusion criteria are summarized in the Supplement  
122 Appendix.

123           This study conformed to the ethical guidelines of the Declaration of Helsinki and was  
124 approved by the institutional review board of Asan Medical Center. The need for written  
125 informed consent was waived. No industry was involved in the design, conduct, or analysis  
126 of the study.

127

## 128 **Data Extraction and Collection**

129 Patient demographics, comorbidities, prescriptions, laboratory data, types of surgeries, and  
130 outcomes were obtained via the ABLE system by researchers who were blinded to the  
131 process of data analysis. Comorbidities diagnosed prior to the date of noncardiac surgery  
132 were electronically obtained using the Korean Standard Classification of Diseases and Causes  
133 of Death (KCD-7), which was developed based on the International Classification of  
134 Diseases, 10th revision (Supplement).<sup>14</sup> In addition, the revised cardiac risk index (RCRI),  
135 which consists of six identifiable predictive factors (high-risk surgery [intraoperative,  
136 intrathoracic, and suprainguinal vascular surgery], ischemic heart disease, congestive heart  
137 failure, cerebrovascular disease, diabetes mellitus controlled with insulin therapy, and renal  
138 dysfunction [serum creatinine concentration >2.0 mg/dL]), was calculated. All 1436 types of  
139 surgeries performed in the study population were reviewed and classified as low- or high-risk  
140 surgeries based on prior expert consensus (Supplement Appendix).<sup>15,16</sup>

141

## 142 **Myocardial Perfusion Imaging**

143 Single photon emission computed tomography with thallium-201 (Tl-201) was used to  
144 acquire myocardial perfusion images via a standardized protocol, as previously described.<sup>17</sup>  
145 Pharmacologic stress was induced with intravenous infusion of either adenosine (0.14



146 mg/kg/min for 6 min) or dipyridamole (0.56 mg/kg/min for 4 min). At peak stress, a 44.4–  
147 148.0-MBq dose of <sup>201</sup>Tl was intravenously injected, depending on the patient’s body  
148 weight and the type of gamma camera used. Post-stress and redistribution MPIs were  
149 acquired with one of the following camera systems equipped with a conventional Anger  
150 camera or cadmium-zinc-telluride detectors: Triad 88 or XLT (Trionix Research Laboratory,  
151 Twinsberg, OH, USA); ADAC or Precedence 16 (Philips Healthcare, Best, The Netherlands);  
152 E.Cam, Symbia T2, or Evo Excel (Siemens Healthineers, Erlangen, Germany); Infinia,  
153 Ventri, Discovery NM830, or NM530c (GE Healthcare, Waukesha, WI, USA). Specific  
154 acquisition parameters depended on the type of camera.

155 MPI was primarily analyzed qualitatively by experienced nuclear medicine physicians  
156 (D.H.M. and S.W.H) as a normal or abnormal.<sup>17</sup> Subsequently, abnormal results were further  
157 classified into fixed perfusion defects only or any reversible perfusion defect. In addition,  
158 semi-quantitative analysis, performed using a 20-segment model and a five-point scale, was  
159 used to calculate the summed stress score, summed rest score, and summed difference score  
160 (SDS). The SDS was converted into a percentage of total myocardium by dividing it by the  
161 maximum potential score ( $4 \times 20$ ) to assess the ischemic burden (% ischemic  
162 myocardium).<sup>18,19</sup>

163

#### 164 **Study Outcomes and Follow-up**

165 The primary outcome in this study was the composite of cardiac death or myocardial  
166 infarction within 30 days after elective noncardiac surgery. Cardiac death was defined as  
167 sudden death or death secondary to a proximate cardiac cause, including cardiac arrest,  
168 myocardial infarction, low-output failure, or fatal arrhythmia. Myocardial infarction was

169 defined as an elevation of cardiac enzymes with associated signs and symptoms of ischemia  
170 felt to be caused by coronary atherothrombosis. The secondary outcomes were cardiac death,  
171 all-cause death, and myocardial infarction within 30 days after elective noncardiac surgery.  
172 The mortality data was confirmed by cross-referencing with the Korean National Health  
173 Insurance Service, which is a single-payer program of a universal health coverage system and  
174 mandatory health care in Korea.<sup>20</sup> In addition, all medical records and other source  
175 documents were carefully reviewed, by two physicians (S.B.W. and C.H.L), blinded to MPI  
176 results, to validate the diagnosis of cardiac death and myocardial infarction. Myocardial  
177 injury after noncardiac surgery (MINS) was defined as a postoperative cardiac troponin  
178 concentration above the 99<sup>th</sup> percentile of the upper reference limit of the assay without  
179 evidence of nonischemic etiology among patients who underwent a routine troponin test after  
180 noncardiac surgery.<sup>21</sup> Definitions of the study outcomes are provided in the Supplement  
181 Appendix.

182

### 183 **Statistical Analysis**

184 Baseline characteristics of the patients are reported as frequencies and percentages for  
185 categorical variables and means with standard deviations for continuous variables. Survival  
186 was assessed using the Kaplan–Meier method and compared using the log-rank test. We  
187 compared the primary and secondary outcomes according to the MPI results by using logistic  
188 regression models, and the final multivariable models included age, sex, the RCRI, and MPI  
189 results. These covariates were selected a priori based on previous evidence.<sup>22</sup> Odds ratios  
190 (ORs) and corresponding 95% confidence intervals (CIs) were reported. We assessed the risk  
191 prediction and stratification performance of MPI by calculating the area under the time-

192 dependent receiver operating characteristic (ROC) curve and the continuous net  
193 reclassification improvement (NRI). Because of the potential for type I error due to multiple  
194 comparisons, for which we did not adjust for the *P* values, results of analyses for secondary  
195 outcomes should be interpreted as exploratory. All reported *P* values are two-sided. A *P* value  
196  $<.05$  was considered statistically significant. Analyses were performed using R software,  
197 version 4.2.1 (R Foundation for Statistical Computing, Vienna, Austria).

198

## 199 **Results**

### 200 **Characteristics of the Population**

201 From January 2000 to December 2021, 82,441 patients who underwent MPI for preoperative  
202 cardiac risk assessment before elective noncardiac surgery were included in this study, of  
203 whom 5603 (6.8%) had an abnormal MPI (Figure 1). The patients' mean age was  $65.7\pm 9.6$   
204 years, 57.5% were men, 50.2% underwent high-risk surgery, and 12.2% had an RCRI score  
205  $\geq 2$  (Table 1). Compared with patients with normal MPI, patients with abnormal MPI were  
206 more likely to have comorbidities. The frequency of abnormal MPI increased as the RCRI  
207 score increased, ranging from 2.4% among patients with an RCRI 0 to 50.3% in patients with  
208 RCRI  $\geq 4$  (Figure 2).

209

### 210 **Primary and Secondary Outcomes**

211 At 30 days, 82388 (99.9%) of patients were completed clinical follow-up. The primary  
212 outcomes (the composite of cardiac death or myocardial infarction) occurred in 184 patients  
213 (97 cardiac deaths and 100 myocardial infarctions) within 30 days of elective noncardiac  
214 surgery. The causes of death are summarized in eTable 1. Figure 3 demonstrates that the

215 cumulative incidences of the primary and secondary outcomes were all significantly higher  
216 among patients with abnormal MPI results than among those with normal results. As  
217 summarized in Table 2, the risk of the primary outcome was significantly higher in patients  
218 with abnormal MPI than in those with normal results (crude incidence, 1.2% vs 0.1%;  
219 adjusted OR, 4.64; 95% CI, 3.29 to 6.50;  $P<.001$ ). Similarly, cardiac death (0.5% vs 0.1%;  
220 adjusted OR, 3.11; 95% CI, 1.86 to 5.07;  $P<.001$ ), death from any cause (1.0% vs 0.5%;  
221 adjusted OR, 1.41; 95% CI, 1.03 to 1.89;  $P=.026$ ), and myocardial infarction (0.9% vs 0.1%;  
222 adjusted OR, 8.19; 95% CI, 5.21 to 12.87;  $P<.001$ ) were more frequent in patients with  
223 abnormal MPI. Among 23934 patients who underwent routine troponin testing after  
224 noncardiac surgery, the risk of MINS was also significantly higher in patients with abnormal  
225 MPI (16.5% vs 13.2%; adjusted OR, 1.37; 95% CI, 1.23 to 1.52;  $P<.001$ ), as indicated in  
226 Table 2 and eFigure 1.

227 When abnormal MPI findings were classified as fixed only or reversible, the primary  
228 outcome more frequently occurred among patients with a fixed defect only (adjusted OR,  
229 3.42; 95% CI, 1.94 to 5.69;  $P<.001$ ) and those with a reversible perfusion defect (adjusted  
230 OR, 5.26; 95% CI, 3.62 to 7.57;  $P<.001$ ) than it did among patients with normal MPI, as  
231 demonstrated in eFigure 2A and eTable 2. In addition, the risk of the primary outcome  
232 increased according to the extent of ischemia. Compared with <5% ischemic burden  
233 (reference category), the adjusted OR for 5-10% ischemic burden was 1.47 (95% CI, 0.94 to  
234 2.23;  $P=0.080$ ), while >10% ischemic burden was associated with an adjusted OR of 3.52  
235 (95% CI, 2.07 to 5.70;  $P<.001$ ) (eFigure 2B and eTable 2).

236

### 237 **Subgroup Analysis**

238 Figure 4 demonstrates the incidence of the primary and secondary outcomes according to the  
239 RCRI score. The risk of cardiac death or MI increased with increasing RCRI score. The  
240 prognostic impact of an abnormal MPI on the risk of cardiac death or MI was more  
241 prominent in patients with low RCRI risk category ( $P$  for interaction  $<.001$ ). Nevertheless,  
242 even among the highest risk group (patients with  $RCRI \geq 2$  and abnormal MPI), the absolute  
243 risk of cardiac death or MI was only 1.5% at 30 days. Additional subgroup analyses  
244 according to the clinical subgroup and types of surgery, which consistently showed the higher  
245 risk of primary outcome in patients with abnormal MPI, were summarized in eFigure 3 and  
246 eFigure 4.

247

#### 248 **Prognostic Performance of MPI before Noncardiac Surgery**

249 The presence of an abnormal MPI improved discrimination for the primary outcome (AUC  
250 with MPI vs without MPI [0.77 vs 0.73;  $P<0.001$ ]) and significantly increased NRI (0.26,  
251 95% CI, 0.11-0.40;  $P<0.001$ ). These significant improvements were driven mainly by  
252 improved discrimination for myocardial infarction. The model including adjustment for  
253 abnormal MPI results yielded good discrimination performance for myocardial infarction  
254 (AUC=0.83).

255

#### 256 **Coronary Angiography and Revascularization before Noncardiac Surgery**

257 Among patients with abnormal MPI results ( $n=5603$ ), 1743 underwent coronary  
258 angiography, and subsequently, 378 underwent coronary revascularization (260 percutaneous  
259 coronary interventions and 118 coronary artery bypass graft surgeries) before elective  
260 noncardiac surgery. Among patients with abnormal MPI, patient who underwent coronary

261 angiography or revascularization were not significantly associated with the lower risk of the  
262 primary outcome within 30 days of noncardiac surgery (Figure 5).

263

## 264 **Discussion**

265 This large, observational study identified a significant association between an abnormal  
266 preoperative MPI and the composite of cardiac death or myocardial infarction within 30 days  
267 of noncardiac surgery—an association that increased progressively according to the extent of  
268 myocardial ischemia. When compared with standard clinical risk factors, the use of  
269 preoperative MPI testing led to a significant improvement in discrimination as well as  
270 substantial reclassification of risk as assessed by the net reclassification index. Nonetheless,  
271 given the low overall incidence of post-operative cardiac events in the study population, the  
272 positive predictive value of an abnormal MPI study to predict postoperative cardiac event  
273 was low (1.2%), leading to potentially unnecessary coronary angiography and  
274 revascularization procedures with unproven prognostic value.

275 Previous studies have examined a role for MPI in stratification of perioperative cardiac  
276 risk, but the results have been mixed.<sup>5,23-25</sup> A meta-analysis of nine studies including 1,179  
277 patients undergoing noncardiac vascular surgery revealed that reversible defects in  $\geq 20\%$  of  
278 myocardial segments were significantly associated with perioperative complications.<sup>5</sup>  
279 Another study suggested that incorporation of MPI may improve perioperative risk  
280 assessment of patients with obstructive disease upon coronary computed tomography  
281 angiography.<sup>23</sup> However, other studies have shown that routine use of MPI before abdominal  
282 aortic surgery did not predict the risk of cardiac complications<sup>26,27</sup> and did not improve  
283 patient risk classification beyond essential assessment using age, RCRI, and surgical

284 priority.<sup>28</sup> However, These previous studies were limited by relatively small sample sizes and  
285 low event rates, inclusion of mainly patients undergoing relatively high-risk vascular surgery,  
286 and the use of outdated perfusion imaging techniques and perioperative management.<sup>15,29</sup> In  
287 contrast, our study included the largest population to date and included a broad spectrum of  
288 patients and surgical procedures across the full risk spectrum, thus demonstrating the  
289 consistent prognostic utility of MPI for predicting perioperative cardiac risk in contemporary  
290 practice.

291 Current clinical guidelines do not support the routine use of MPI in preoperative risk  
292 assessment and rather recommend a subjective assessment of functional capacity as an initial  
293 step for preoperative cardiac risk assessment.<sup>9,30</sup> Typically, preoperative MPI is recommended  
294 only for patients with both elevated risk of major adverse cardiac events and poor exercise  
295 capacity. However, a recent prospective cohort study has revealed that subjective assessments  
296 of functional capacity are neither an accurate predictors of exercise capacity based on formal  
297 cardiopulmonary testing nor associated with the risk of post-operative cardiac events.<sup>22</sup>  
298 Moreover, recent studies suggested that the prevalence of poor functional capacity is  
299 relatively low in clinical practice, and the most patients who experience postoperative  
300 cardiac complications had satisfactory preoperative functional capacities.<sup>31-33</sup> Therefore, our  
301 study suggested that more liberal use of MPI, ungated by functional capacity, is seemingly  
302 warranted, particularly in patients with a considerable surgical risk.

303 Prior to our study, there was little information on the value of preoperative non-  
304 invasive stress testing in low-risk patients.<sup>24,29</sup> Our study, which included 32498 patients with  
305 RCRI 0, demonstrated that even among low-risk patients, an abnormal MPI study was  
306 significantly associated with an increased risk of post-operative cardiac events. In addition,

307 the prognostic impact of abnormal MPI was more prominent in patients with low cardiac risk.  
308 Nonetheless, given that the incidence of an abnormal MPI in low-risk patients (RCRI 0) was  
309 only 2.4% and the incidence of cardiac death or MI among these individuals was only 1.0%,  
310 the value of routine preoperative MPI testing in low-risk population should be interpreted in  
311 the context of the appropriate use of medical resources and cost-effectiveness in real practice.

312 The original justification for preoperative MPI was to identify patients with significant  
313 myocardial ischemia who would potentially benefit from coronary revascularization prior to  
314 noncardiac surgery. However, this hypothesis was refuted by the randomized trials which  
315 demonstrated no clinical benefit of coronary revascularization before noncardiac surgery<sup>34-37</sup>  
316 – results that are reinforced by our observational data. Therefore, our study suggested that  
317 preoperative MPI should not be the sole indication for preoperative invasive coronary  
318 angiography and subsequent coronary revascularization in stable elective surgical candidates,  
319 which is supported by recent randomized trial in patients with stable ischemic heart disease.<sup>38</sup>  
320 Nonetheless, previous observational study has suggested an association between performing  
321 preoperative MPI and reduced rate of perioperative mortality after noncardiac surgery.<sup>29</sup>  
322 These findings suggest that clinical benefits associated with preoperative MPI may be  
323 explained by mechanisms other than coronary revascularization such as careful  
324 anesthesiologic care, meticulous perioperative medical surveillance and management,  
325 changes in surgical technique, mostly towards a less invasive approach, or even deferring  
326 surgery in some very high risk patients. Further prospective study is necessary to evaluate  
327 whether performing preoperative MPI and subsequent changes in surgical and medical  
328 management of patient would improve postoperative cardiac outcomes.

329 Our study has several limitations. First, it was a retrospective observational study.



330 Therefore, the possibility of residual confounding in the associations cannot be eliminated  
331 despite the statistical adjustments we made for several key clinical characteristics. Second,  
332 our data sources did not capture information on exercise tolerance. Third, biomarkers for  
333 perioperative myocardial necrosis were not obtained for all patients. Fourth, the attending  
334 physicians and surgeons were not blinded to the MPI results, which might have affected the  
335 clinical outcomes. Fifth, this study was performed in a tertiary hospital with high surgical  
336 volumes, thus limiting its generalizability to lower-volume surgical centers.

337 In conclusion, among patients undergoing elective noncardiac surgery and referred for  
338 preoperative MPI testing, an abnormal MPI study was associated with an increased risk of  
339 30-day cardiac death or MI—a result that was independent of age, sex, and clinical risk  
340 factors. However, the value of routine preoperative MPI testing appears to be limited given  
341 its low positive predictive value and the fact that coronary angiography or revascularization  
342 triggered by an abnormal MPI result was not associated with improved outcomes.

343

#### 344 **Sources of Funding**

345 This research was supported by a grant of the Korea Health Technology R&D Project through  
346 the Korea Health Industry Development Institute (KHIDI), funded by the Ministry of Health  
347 & Welfare, Republic of Korea (grant number: HC19C0022).

348

#### 349 **Role of the funding source**

350 The funder of the study had no role in study design, data collection, data analysis, data  
351 interpretation, or writing of the report.

352

353 **Disclosures**

354 The authors have no conflicts to declare.

## 355 **References**

- 356 1. Weiser TG, Regenbogen SE, Thompson KD, Haynes AB, Lipsitz SR, Berry WR, Gawande AA.  
357 An estimation of the global volume of surgery: a modelling strategy based on available  
358 data. *Lancet*. 2008;372:139-144. doi: 10.1016/S0140-6736(08)60878-8
- 359 2. Weiser TG, Haynes AB, Molina G, Lipsitz SR, Esquivel MM, Uribe-Leitz T, Fu R, Azad T, Chao  
360 TE, Berry WR, et al. Estimate of the global volume of surgery in 2012: an assessment  
361 supporting improved health outcomes. *Lancet*. 2015;385 Suppl 2:S11. doi: 10.1016/s0140-  
362 6736(15)60806-6
- 363 3. Spence J, LeManach Y, Chan MTV, Wang CY, Sigamani A, Xavier D, Pearse R, Alonso-Coello  
364 P, Garutti I, Srinathan SK, et al. Association between complications and death within 30  
365 days after noncardiac surgery. *Cmaj*. 2019;191:E830-e837. doi: 10.1503/cmaj.190221
- 366 4. Halvorsen S, Mehilli J, Cassese S, Hall TS, Abdelhamid M, Barbato E, De Hert S, de Laval I,  
367 Geisler T, Hinterbuchner L, et al. 2022 ESC Guidelines on cardiovascular assessment and  
368 management of patients undergoing non-cardiac surgery. *Eur Heart J*. 2022;43:3826-3924.  
369 doi: 10.1093/eurheartj/ehac270
- 370 5. Etchells E, Meade M, Tomlinson G, Cook D. Semiquantitative dipyridamole myocardial  
371 stress perfusion imaging for cardiac risk assessment before noncardiac vascular surgery: a  
372 meta-analysis. *J Vasc Surg*. 2002;36:534-540. doi: 10.1067/mva.2002.126563
- 373 6. Kristensen SD, Knuuti J, Saraste A, Anker S, Botker HE, Hert SD, Ford I, Gonzalez-Juanatey  
374 JR, Gorenek B, Heyndrickx GR, et al. 2014 ESC/ESA Guidelines on non-cardiac surgery:  
375 cardiovascular assessment and management: The Joint Task Force on non-cardiac surgery:  
376 cardiovascular assessment and management of the European Society of Cardiology (ESC)  
377 and the European Society of Anaesthesiology (ESA). *Eur Heart J*. 2014;35:2383-2431. doi:  
378 10.1093/eurheartj/ehu282
- 379 7. Fleisher LA, Fleischmann KE, Auerbach AD, Barnason SA, Beckman JA, Bozkurt B, Davila-  
380 Roman VG, Gerhard-Herman MD, Holly TA, Kane GC, et al. 2014 ACC/AHA guideline on  
381 perioperative cardiovascular evaluation and management of patients undergoing  
382 noncardiac surgery: a report of the American College of Cardiology/American Heart  
383 Association Task Force on practice guidelines. *J Am Coll Cardiol*. 2014;64:e77-137. doi:  
384 10.1016/j.jacc.2014.07.944
- 385 8. Devereaux PJ, Sessler DI. Cardiac Complications in Patients Undergoing Major Noncardiac  
386 Surgery. *N Engl J Med*. 2015;373:2258-2269. doi: 10.1056/NEJMra1502824
- 387 9. Smilowitz NR, Berger JS. Perioperative Cardiovascular Risk Assessment and Management  
388 for Noncardiac Surgery: A Review. *JAMA*. 2020;324:279-290. doi: 10.1001/jama.2020.7840
- 389 10. Wijeyesundera DN, Beattie WS, Austin PC, Hux JE, Laupacis A. Non-invasive cardiac stress  
390 testing before elective major non-cardiac surgery: population based cohort study. *Bmj*.

- 391 2010;340:b5526. doi: 10.1136/bmj.b5526
- 392 11. Schulman-Marcus J, Feldman DN, Rao SV, Prasad A, McCoy L, Garratt K, Kim LK, Minutello  
393 RM, Wong SC, Vora AN, et al. Characteristics of Patients Undergoing Cardiac  
394 Catheterization Before Noncardiac Surgery: A Report From the National Cardiovascular  
395 Data Registry CathPCI Registry. *JAMA Intern Med.* 2016;176:611-618. doi:  
396 10.1001/jamainternmed.2016.0259
- 397 12. Chan K, Abou-Zamzam AM, Woo K. Preoperative Cardiac Stress Testing in the Southern  
398 California Vascular Outcomes Improvement Collaborative. *Ann Vasc Surg.* 2018;49:234-240.  
399 doi: 10.1016/j.avsg.2017.11.028
- 400 13. Shin SY, Lyu Y, Shin Y, Choi HJ, Park J, Kim WS, Lee JH. Lessons Learned from Development  
401 of De-identification System for Biomedical Research in a Korean Tertiary Hospital. *Healthc  
402 Inform Res.* 2013;19:102-109. doi: 10.4258/hir.2013.19.2.102
- 403 14. Korean standard classification of diseases and causes of death (KCD-7).  
404 [https://kssc.kostat.go.kr:8443/ksscNew\\_web/ekssc/main/main.do](https://kssc.kostat.go.kr:8443/ksscNew_web/ekssc/main/main.do). Accessed 1 Apr 2016.
- 405 15. Smilowitz NR, Gupta N, Ramakrishna H, Guo Y, Berger JS, Bangalore S. Perioperative Major  
406 Adverse Cardiovascular and Cerebrovascular Events Associated With Noncardiac Surgery.  
407 *JAMA Cardiol.* 2017;2:181-187. doi: 10.1001/jamacardio.2016.4792
- 408 16. Halvorsen S, Mehilli J, Cassese S, Hall TS, Abdelhamid M, Barbato E, De Hert S, de Laval I,  
409 Geisler T, Hinterbuchner L, et al. 2022 ESC Guidelines on cardiovascular assessment and  
410 management of patients undergoing non-cardiac surgery: Developed by the task force for  
411 cardiovascular assessment and management of patients undergoing non-cardiac surgery  
412 of the European Society of Cardiology (ESC) Endorsed by the European Society of  
413 Anaesthesiology and Intensive Care (ESAIC). *European Heart Journal.* 2022;43:3826-3924.  
414 doi: 10.1093/eurheartj/ehac270
- 415 17. Kim YH, Ahn JM, Park DW, Song HG, Lee JY, Kim WJ, Yun SC, Kang SJ, Lee SW, Lee CW, et  
416 al. Impact of ischemia-guided revascularization with myocardial perfusion imaging for  
417 patients with multivessel coronary disease. *J Am Coll Cardiol.* 2012;60:181-190. doi:  
418 10.1016/j.jacc.2012.02.061
- 419 18. Hachamovitch R, Rozanski A, Shaw LJ, Stone GW, Thomson LE, Friedman JD, Hayes SW,  
420 Cohen I, Germano G, Berman DS. Impact of ischaemia and scar on the therapeutic benefit  
421 derived from myocardial revascularization vs. medical therapy among patients undergoing  
422 stress-rest myocardial perfusion scintigraphy. *Eur Heart J.* 2011;32:1012-1024. doi:  
423 10.1093/eurheartj/ehq500
- 424 19. Dorbala S, Ananthasubramaniam K, Armstrong IS, Chareonthaitawee P, DePuey EG, Einstein  
425 AJ, Gropler RJ, Holly TA, Mahmarian JJ, Park MA, et al. Single Photon Emission Computed  
426 Tomography (SPECT) Myocardial Perfusion Imaging Guidelines: Instrumentation,  
427 Acquisition, Processing, and Interpretation. *J Nucl Cardiol.* 2018;25:1784-1846. doi:

- 428 10.1007/s12350-018-1283-y
- 429 20. Son JS, Choi S, Kim K, Kim SM, Choi D, Lee G, Jeong SM, Park SY, Kim YY, Yun JM, et al.  
430 Association of Blood Pressure Classification in Korean Young Adults According to the 2017  
431 American College of Cardiology/American Heart Association Guidelines With Subsequent  
432 Cardiovascular Disease Events. *Jama*. 2018;320:1783-1792. doi: 10.1001/jama.2018.16501
- 433 21. Ruetzler K, Smilowitz NR, Berger JS, Devereaux PJ, Maron BA, Newby LK, de Jesus Perez V,  
434 Sessler DI, Wijeyesundera DN. Diagnosis and Management of Patients With Myocardial  
435 Injury After Noncardiac Surgery: A Scientific Statement From the American Heart  
436 Association. *Circulation*. 2021;144:e287-e305. doi: 10.1161/CIR.0000000000001024
- 437 22. Wijeyesundera DN, Pearse RM, Shulman MA, Abbott TEF, Torres E, Ambosta A, Croal BL,  
438 Granton JT, Thorpe KE, Grocott MPW, et al. Assessment of functional capacity before major  
439 non-cardiac surgery: an international, prospective cohort study. *The Lancet*.  
440 2018;391:2631-2640. doi: 10.1016/s0140-6736(18)31131-0
- 441 23. Dowsley TF, Sheth T, Chow BJW. Complementary pre-operative risk assessment using  
442 coronary computed tomography angiography and nuclear myocardial perfusion imaging  
443 in non-cardiac surgery: A VISION-CTA sub-study. *J Nucl Cardiol*. 2020;27:1331-1337. doi:  
444 10.1007/s12350-019-01779-9
- 445 24. Hashimoto J, Nakahara T, Bai J, Kitamura N, Kasamatsu T, Kubo A. Preoperative risk  
446 stratification with myocardial perfusion imaging in intermediate and low-risk non-cardiac  
447 surgery. *Circ J*. 2007;71:1395-1400. doi: 10.1253/circj.71.1395
- 448 25. Metz LD, Beattie M, Hom R, Redberg RF, Grady D, Fleischmann KE. The prognostic value of  
449 normal exercise myocardial perfusion imaging and exercise echocardiography: a meta-  
450 analysis. *J Am Coll Cardiol*. 2007;49:227-237. doi: 10.1016/j.jacc.2006.08.048
- 451 26. Baron JF, Mundler O, Bertrand M, Vicaut E, Barré E, Godet G, Samama CM, Coriat P, Kieffer  
452 E, Viars P. Dipyridamole-thallium scintigraphy and gated radionuclide angiography to  
453 assess cardiac risk before abdominal aortic surgery. *N Engl J Med*. 1994;330:663-669. doi:  
454 10.1056/nejm199403103301002
- 455 27. Shin S, Kwon TW, Cho YP, Lee JY, Park H, Han Y. Preoperative cardiac evaluation by  
456 dipyridamole thallium-201 myocardial perfusion scan provides no benefit in patients with  
457 abdominal aortic aneurysm. *World J Surg*. 2013;37:2965-2971. doi: 10.1007/s00268-013-  
458 2200-9
- 459 28. Yao Y, Quirk T, French M, Dharmalingam A, Collins N. Myocardial perfusion imaging failed  
460 to improve patient risk classification compared with the revised cardiac risk index for early  
461 cardiac complications after major non-cardiac surgery. *Intern Med J*. 2022;52:1203-1214.  
462 doi: 10.1111/imj.15662
- 463 29. Weinstein H, Steingart R. Myocardial perfusion imaging for preoperative risk stratification.  
464 *J Nucl Med*. 2011;52:750-760. doi: 10.2967/jnumed.110.076158

- 465 30. Halvorsen S, Mehilli J, Cassese S, Hall TS, Abdelhamid M, Barbato E, De Hert S, de Laval I,  
466 Geisler T, Hinterbuchner L, et al. 2022 ESC Guidelines on cardiovascular assessment and  
467 management of patients undergoing non-cardiac surgery. *Eur Heart J*. 2022;43:3826-3924.  
468 doi: 10.1093/eurheartj/ehac270
- 469 31. Gupta PK, Gupta H, Sundaram A, Kaushik M, Fang X, Miller WJ, Esterbrooks DJ, Hunter CB,  
470 Pipinos II, Johanning JM, et al. Development and validation of a risk calculator for  
471 prediction of cardiac risk after surgery. *Circulation*. 2011;124:381-387. doi:  
472 10.1161/circulationaha.110.015701
- 473 32. Biccard B. Proposed research plan for the derivation of a new Cardiac Risk Index. *Anesth*  
474 *Analg*. 2015;120:543-553. doi: 10.1213/ane.0000000000000598
- 475 33. Biccard BM. The clinical utility of preoperative functional assessment. *Lancet*.  
476 2018;391:2580-2581. doi: 10.1016/s0140-6736(18)31375-8
- 477 34. McFalls EO, Ward HB, Moritz TE, Goldman S, Krupski WC, Littooy F, Pierpont G, Santilli S,  
478 Rapp J, Hattler B, et al. Coronary-artery revascularization before elective major vascular  
479 surgery. *N Engl J Med*. 2004;351:2795-2804. doi: 10.1056/NEJMoa041905
- 480 35. Hawn MT, Graham LA, Richman JS, Itani KM, Henderson WG, Maddox TM. Risk of major  
481 adverse cardiac events following noncardiac surgery in patients with coronary stents. *Jama*.  
482 2013;310:1462-1472. doi: 10.1001/jama.2013.278787
- 483 36. Poldermans D, Schouten O, Vidakovic R, Bax JJ, Thomson IR, Hoeks SE, Feringa HH,  
484 Dunkelgrün M, de Jaegere P, Maat A, et al. A clinical randomized trial to evaluate the  
485 safety of a noninvasive approach in high-risk patients undergoing major vascular surgery:  
486 the DECREASE-V Pilot Study. *J Am Coll Cardiol*. 2007;49:1763-1769. doi:  
487 10.1016/j.jacc.2006.11.052
- 488 37. Muthappan P, Smith D, Aronow HD, Eagle K, Wohns D, Fox J, Share D, Gurm HS. The  
489 epidemiology and outcomes of percutaneous coronary intervention before high-risk  
490 noncardiac surgery in contemporary practice: insights from the Blue Cross Blue Shield of  
491 Michigan Cardiovascular Consortium (BMC2) Registry. *J Am Heart Assoc*. 2014;3:e000388.  
492 doi: 10.1161/jaha.113.000388
- 493 38. Maron DJ, Hochman JS, Reynolds HR, Bangalore S, O'Brien SM, Boden WE, Chaitman BR,  
494 Senior R, López-Sendón J, Alexander KP, et al. Initial Invasive or Conservative Strategy for  
495 Stable Coronary Disease. *N Engl J Med*. 2020;382:1395-1407. doi: 10.1056/NEJMoa1915922

496

497 **Figure legends**

498 **Figure 1. Flow Diagram of Participants in the Study**

499 MPI, myocardial perfusion imaging.

500 **Figure 2. Frequency of Abnormal MPI According to the Revised Cardiac Risk Index**

501 MPI, myocardial perfusion imaging.

502 **Figure 3. Primary and Secondary Outcomes**

503 The cumulative incidences of the primary outcome of the composite of cardiac death and  
504 myocardial infarction (A) and the secondary outcomes of cardiac death (B), all-cause death  
505 (C), and myocardial infarction (D) within 30 days of noncardiac surgery. The *P* value was  
506 calculated by means of the log-rank test.

507 **Figure 4. Primary and Secondary Outcomes According to Revised Cardiac Risk Index**

508 **Score**

509 Subgroup analyses by revised cardiac risk index score for primary and secondary outcomes,  
510 classified into three groups (score of 0, 1, and  $\geq 2$ ). The crude incidence of the outcomes is  
511 marked on the bars. *P* value for interaction is also shown.

512 **Figure 5. Primary Outcome According to Preoperative Coronary Angiography and**

513 **Revascularization among Patients with Abnormal MPI Results**

514 Cumulative incidences of the primary outcome of the composite of cardiac death and  
515 myocardial infarction within 30 days after noncardiac surgery. CAG, coronary angiography;  
516 MPI, myocardial perfusion imaging.

517 **Table 1. Baseline Characteristics**

Characteristics	All patients (N = 82441)	Myocardial perfusion imaging		P value
		Abnormal (n = 5603)	Normal (n = 76838)	
Age, mean (SD), years	65.7 (9.6)	67.5 (9.1)	65.5 (9.6)	<.001
≥75 years	14581 (17.7)	1254 (22.4)	13327 (17.3)	<.001
≥65 years	47926 (58.1)	3685 (65.8)	44241 (57.6)	<.001
Sex (male)	47417 (57.5)	4500 (80.3)	42917 (55.9)	<.001
BMI, mean (SD), kg/m <sup>2</sup>	24.4 (3.4)	24.5 (3.4)	24.4 (3.5)	<.001
Not available	2302 (2.8)	202 (3.6)	2100 (2.7)	
Hypertension	42570 (51.6)	3580 (63.9)	38990 (50.7)	<.001
Diabetes	22295 (27.0)	2291 (40.9)	20004 (26.0)	<.001
Insulin usage	3968 (4.8)	545 (9.7)	3423 (4.5)	<.001
Hyperlipidemia	5407 (6.6)	670 (12.0)	4737 (6.2)	<.001
Chronic kidney disease	4646 (5.6)	564 (10.1)	4082 (5.3)	<.001
Creatinine >2.0 mg/dL	3696 (4.5)	394 (7.0)	3302 (4.3)	<.001
Chronic heart failure	1462 (1.8)	373 (6.7)	1089 (1.4)	<.001
Cerebrovascular disease	3248 (3.9)	491 (8.8)	2757 (3.6)	<.001
Ischemic heart disease	8218 (10.0)	3360 (60.0)	4858 (6.3)	<.001
High-risk surgery	41396 (50.2)	2775 (49.5)	38621 (50.3)	.29
Type of surgery				<.001
General	33652 (40.8)	2380 (42.5)	31272 (40.7)	
Thoracic	5959 (7.2)	387 (6.9)	5572 (7.3)	
Transplant	5566 (6.8)	207 (3.7)	5359 (7.0)	
Vascular	2345 (2.8)	451 (8.0)	1894 (2.5)	
Urologic	7779 (9.4)	758 (13.5)	7021 (9.1)	
Breast and endocrine	947 (1.1)	67 (1.2)	880 (1.1)	
Neurosurgery	11106 (13.5)	427 (7.6)	10679 (13.9)	
Obstetrics and gynecology	2361 (2.9)	57 (1.0)	2304 (3.0)	
Orthopedic	10849 (13.2)	674 (12.0)	10175 (13.2)	
Otolaryngology	1492 (1.8)	136 (2.4)	1356 (1.8)	
Plastic	385 (0.5)	59 (1.1)	326 (0.4)	
Left ventricular ejection fraction				
≤ 40%	712 (0.9)	349 (6.2)	363 (0.5)	<.001
Not available	7342 (8.9)	218 (3.9)	7124 (9.3)	
Revised cardiac risk index				<.001
0	32498 (39.4)	785 (14.0)	31713 (41.3)	
1	39837 (48.3)	2453 (43.8)	37384 (48.7)	
2	8445 (10.2)	1752 (31.3)	6693 (8.7)	
≥3	1661 (2.0)	613 (10.9)	1048 (1.4)	
Medication history*				
Beta blocker	16591 (20.1)	2862 (51.1)	13729 (17.9)	<.001
Calcium channel blocker	38279 (46.4)	3693 (65.9)	34586 (45.0)	<.001
ACEi or ARB	23904 (29.0)	2608 (46.5)	21296 (27.7)	<.001



---

Statin	19981 (24.2)	3208 (57.3)	16773 (21.8)	<.001
Aspirin	9594 (11.6)	2684 (47.9)	6910 (9.0)	<.001
Clopidogrel	4896 (5.9)	1662 (29.7)	3234 (4.2)	<.001

---

518 Data are presented as no. (%) of individuals unless otherwise indicated.

519 \*Medications at the time of admission for surgery.

520 Abbreviations: ACEi, angiotensin-converting enzyme inhibitor; ARB, angiotensin II receptor

521 blocker; SD, standard deviation.

522 **Table 2. Thirty-day Outcomes, stratified by MPI Results**

	Myocardial perfusion imaging <sup>a</sup>		Unadjusted		Adjusted <sup>b</sup>	
	Abnormal n=5598	Normal n=76790	OR [95% CI]	<i>P</i> value	OR [95% CI]	<i>P</i> value
Primary outcome						
Cardiac death or MI	69 (1.2) <sup>a</sup>	115 (0.1)	8.32 [6.14-11.19]	<.001	4.64 [3.29-6.50]	<.001
Secondary outcomes						
Cardiac death	26 (0.5)	71 (0.1)	5.04 [3.16-7.80]	<.001	3.11 [1.86-5.07]	<.001
All-cause death	58 (1.0)	352 (0.5)	2.27 [1.70-2.98]	<.001	1.41 [1.03-1.89]	.026
MI	52 (0.9)	48 (0.1)	15.0 [10.11-22.26]	<.001	8.19 [5.21-12.87]	<.001
Patients undergoing troponin test <sup>c</sup>						
Cardiac death and MINS	548 (16.7)	2741 (13.3)	1.31 [1.18-1.45]	<.001	1.38 [1.24-1.53]	<.001
MINS	542 (16.5)	2729 (13.2)	1.30 [1.17-1.44]	<.001	1.37 [1.23-1.52]	<.001

523 Abbreviations: CI, confidence interval; OR, odds ratio; MI, myocardial infarction; MINS, myocardial injury after noncardiac surgery.

524 <sup>a</sup>Crude incidence within 30 days, no. of events (%).

525 <sup>b</sup>Adjusted variables were age, sex, revised cardiac risk index, and myocardial perfusion imaging result.

526 <sup>c</sup>Cardiac troponin test was conducted within 30 days after noncardiac surgery in 23934 patients, and 15 patients of them had missing data.

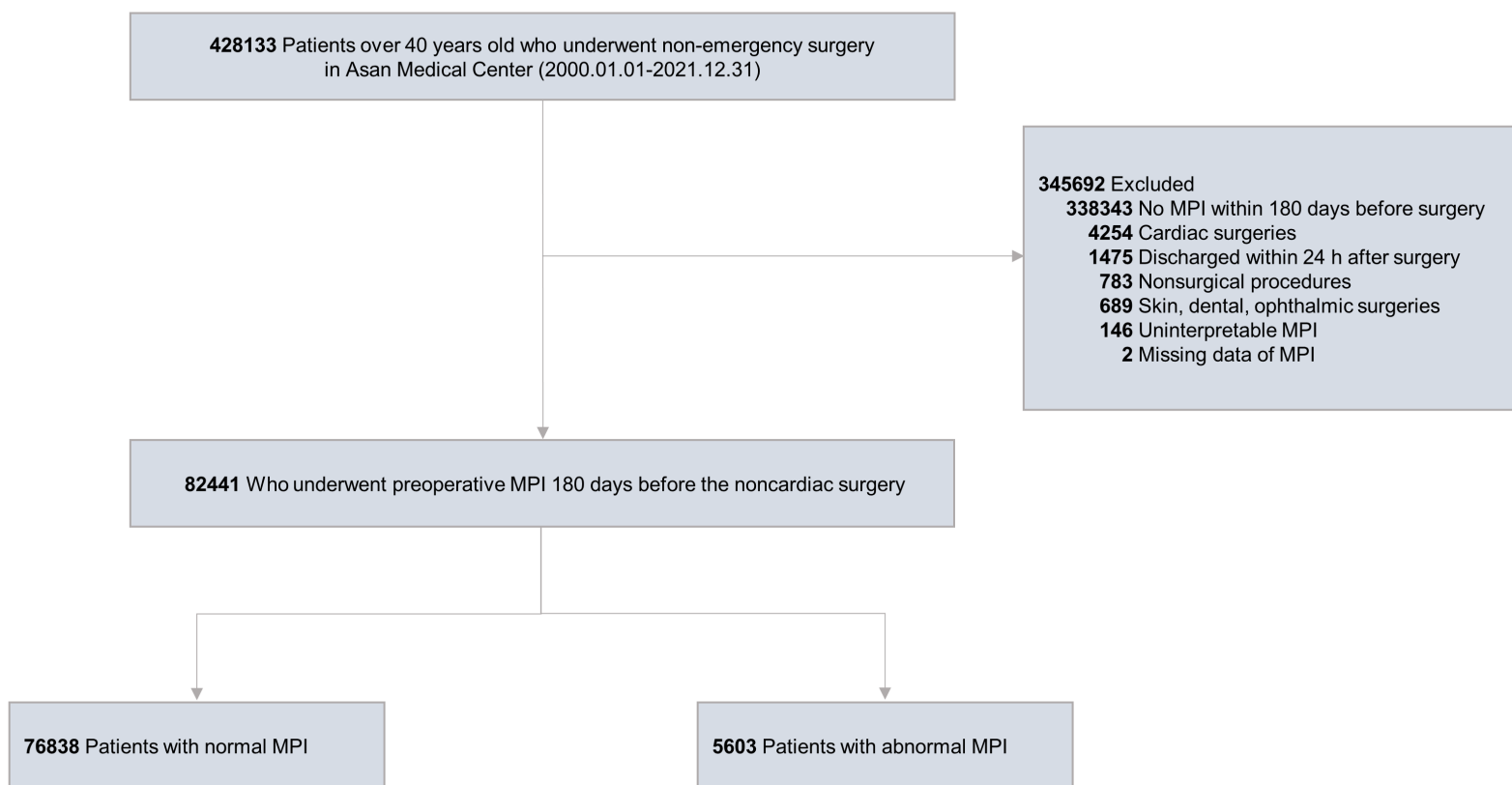
527 **Table 3. Predictive Performance of Myocardial Perfusion Imaging before Noncardiac Surgery**

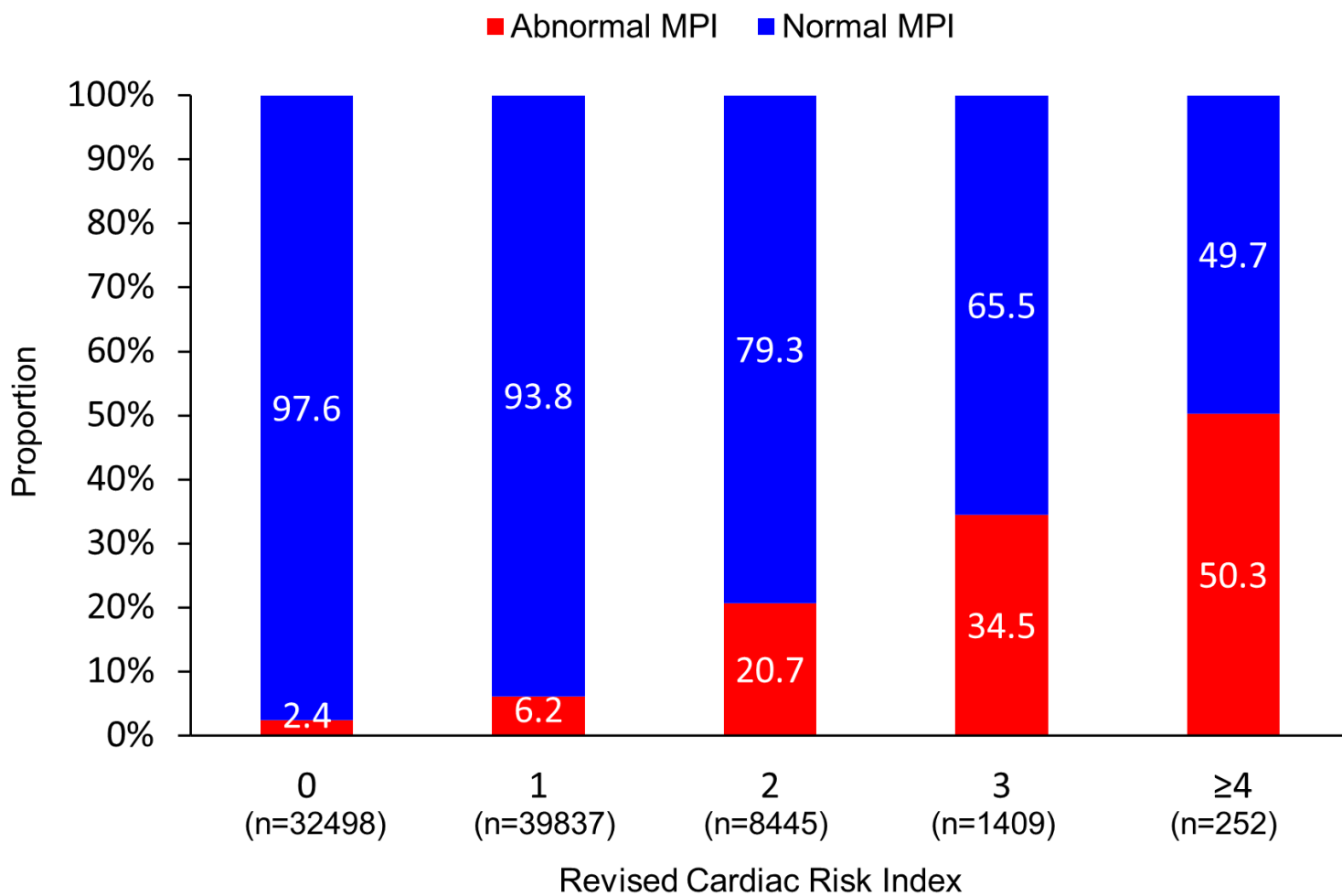
	AUC <sup>a</sup>	<i>P</i> value	Net reclassification improvement			
			Events	Non-events	Overall [95% CI]	<i>P</i> value
Cardiac death and MI						
Baseline model <sup>b</sup>	0.73					
Plus MPI result	0.77	<.001	-0.12	0.38	0.26 [0.11-0.40]	<.001
Cardiac death						
Baseline model <sup>b</sup>	0.70					
Plus MPI result	0.73	.048	-0.26	0.35	0.09 [-0.10-0.28]	.360
All cause death						
Baseline model <sup>b</sup>	0.65					
Plus MPI result	0.65	.110	-0.42	0.30	-0.12 [-0.21-0.03]	.007
Myocardial infarction						
Baseline model <sup>b</sup>	0.76					
Plus MPI result	0.83	<.001	0.10	0.49	0.59 [0.39-0.79]	<.001

528 Abbreviations: AUC, area under the receiver-operating-characteristic curve; CI, confidence interval; MPI, myocardial perfusion imaging.

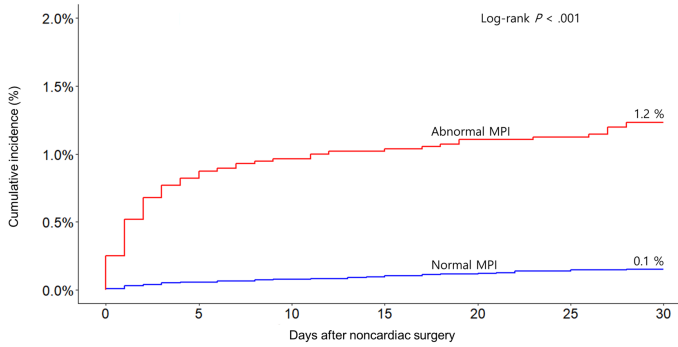
529 <sup>a</sup>AUC for the relevant logistic regression model.

530 <sup>b</sup>Covariates in the baseline model were age, sex, and the revised cardiac risk index score.



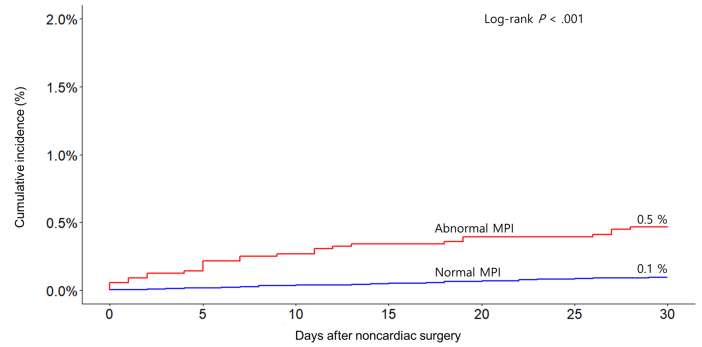


**A** Cardiac death or myocardial infarction



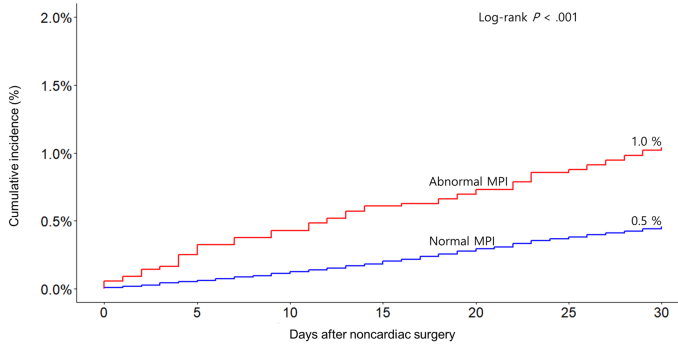
No. at risk	0	5	10	15	20	25	30
Normal MPI	76838	76768	76715	76642	76551	76467	76409
Abnormal MPI	5603	5551	5540	5529	5521	5509	5498

**B** Cardiac death



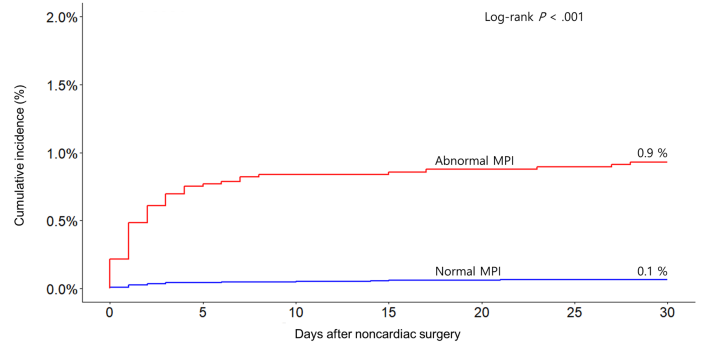
No. at risk	0	5	10	15	20	25	30
Normal MPI	76838	76799	76747	76680	76592	76511	76453
Abnormal MPI	5603	5589	5579	5567	5561	5550	5541

**C** All-cause death



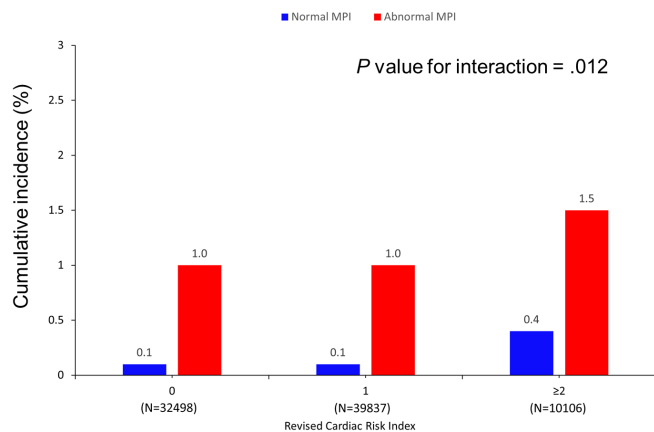
No. at risk	0	5	10	15	20	25	30
Normal MPI	76838	76799	76747	76680	76592	76511	76453
Abnormal MPI	5603	5589	5579	5567	5561	5550	5541

**D** Myocardial infarction

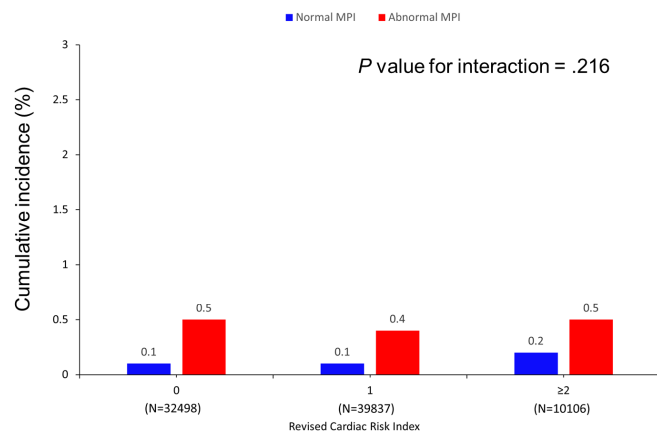


No. at risk	0	5	10	15	20	25	30
Normal MPI	76838	76768	76715	76642	76551	76467	76409
Abnormal MPI	5603	5551	5540	5529	5521	5509	5498

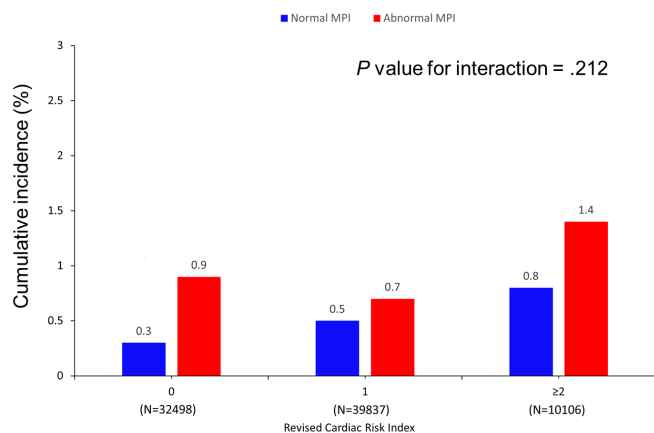
**A** Cardiac death or MI within 30 days after noncardiac surgery



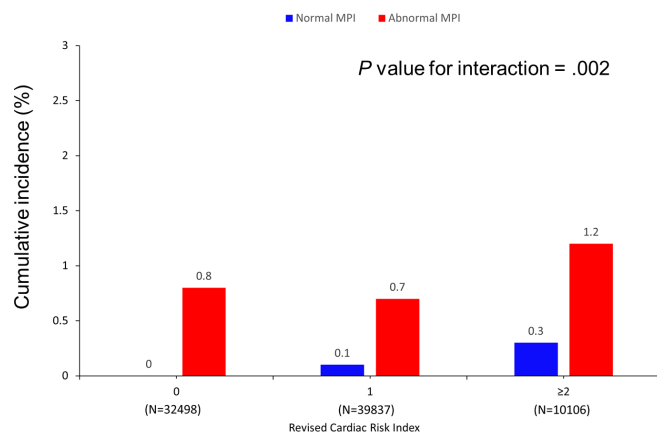
**B** Cardiac death within 30 days after noncardiac surgery

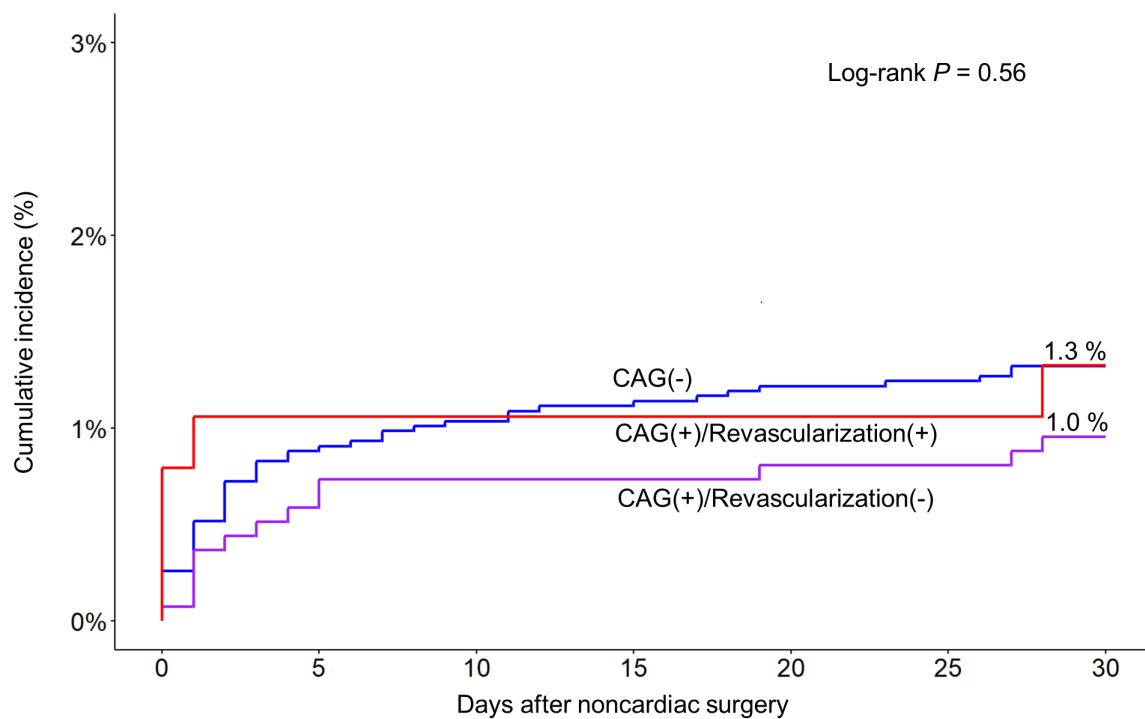


**C** All cause death within 30 days after noncardiac surgery



**D** Myocardial infarction within 30 days after noncardiac surgery





No. at risk		0	5	10	15	20	25	30
	CAG(-)	3860	3822	3816	3809	3803	3795	3788
	CAG(+)/Revascularization(-)	1365	1357	1352	1349	1347	1345	1342
	CAG(+)/Revascularization(+)	378	372	372	371	371	369	368