

A Randomized Comparison of Radial Artery Intimal Hyperplasia Following Distal vs. Proximal Transradial Access for Coronary Angiography: PRESERVE RADIAL Trial.

Authors: Behnam N. Tehrani, MD^a, Matthew W. Sherwood, MD, MHS^a, Abdulla A. Damluji, MD^{a,b}, PhD^a, Kelly C. Epps, MD^a, Hooman Bakhshi, MD^{a,b}, Lindsey Cilia, MD^a, Isuru Dassanayake, PhD^c, Moemen Eltebaney, MD^a, Raghav Gattani, MD^a, Edward Howard, MD^a, David Kepplinger, PhD^c, Araba Ofosu-Somuah, MD^a, Wayne B. Batchelor, MD, MHS¹.

^a Inova Heart and Vascular Institute, Falls Church, Virginia.

^b Johns Hopkins University, Baltimore, Maryland

^c George Mason University, Fairfax, Virginia

Short Title: Vascular Injury and Healing Following Distal Transradial Access

Word Count: 5998 (including references, figures, legends and tables):

Figures: 4

Tables: 4

Corresponding Authors (No reprints will be ordered)

Behnam N. Tehrani, MD

Cardiac Catheterization Laboratories

Inova Heart and Vascular Institute

3300 Gallows Road

Falls Church, Virginia 22042

Email: behnam.tehrani@Inova.org

AND

Wayne B. Batchelor, MD, MHS

Director, Interventional Cardiology, Inova Health System

Associate Director, Inova Heart and Vascular Institute

3300 Gallows Road

Falls Church, VA 22042

Email: wayne.batchelor@Inova.org

ABSTRACT

Background: Distal transradial access (dTRA) is an alternative to conventional forearm transradial access (fTRA) for coronary angiography (CAG). Differences in healing of the radial artery in the forearm (FRA) have not been evaluated between these 2 access strategies. We sought to compare FRA intimal-medial thickening (IMT) in patients randomized to dTRA vs. fTRA for CAG.

Methods and Results: Sixty-four consecutive patients undergoing non-emergent CAG were randomized (1:1) to dTRA vs. fTRA. Ultrahigh resolution (55 MHz) vascular ultrasound of the FRA and distal RA was performed pre-CAG and at 90 days. Primary endpoint was 90-day FRA IMT. Secondary endpoints included procedural characteristics, vascular injury, RA occlusion and ipsilateral hand pain and function. Baseline demographics and clinical characteristics, mean FRA IMT, time to RA access, procedure time, and radiation exposure were similar between the dTRA and fTRA cohorts. There were no between group differences in 90-day FRA IMT (0.37 mm vs 0.38 mm, respectively; $p=0.73$). No RA occlusions or signs of major vascular injury were observed at 90 days. Ipsilateral hand pain and function (Borg pain scale: 12 vs 11, $p=0.24$; DASH scores: 6 vs 8, $p=0.46$) were comparable.

Conclusions: In this single center randomized clinical trial, similar patterns of FRA vascular healing at 90 days, procedural results as well as hand pain and function were observed following dTRA vs. fTRA for CAG. Further investigation is warranted to better understand the mechanistic and predictors of RA healing and to identify strategies aimed at preserving RA integrity for future procedures.

Key Words: Transradial Coronary Angiography; Distal Transradial Access; Intimal Medial Thickening; Vascular Healing

Abbreviations:

CAG	=	Coronary angiography;
dTRA	=	Distal transradial access;
FRA	=	Forearm radial artery;
fTRA	=	Forearm transradial access;
IMT	=	Intimal medial thickening;
PCI	=	Percutaneous coronary intervention;
RA	=	Radial artery;
RAO	=	Radial artery occlusion;
TRA	=	Transradial access

What is New?

- DTRA has been proposed as an alternative to traditional fTRA in the wrist for CAG and PCI because of ergonomic and post-procedural recovery benefits to the patient, as well as potential reductions in occlusion of the FRA.
- There are gaps in knowledge, however, regarding potential differences in remodeling of the FRA in patients undergoing dTRA versus fTRA.
- In this randomized clinical trial, there were no differences in IMT and patterns of vascular injury and healing, using ultrahigh resolution (55 MHz) ultrasound, at 90 days in patients randomized to dTRA or fTRA for elective and non-emergent CAG and PCI.

What Are the Clinical Implications:

- Our findings highlight the need for further inquiry through large multicenter randomized clinical trials to better understand the mechanics and predictors of IMT and to identify strategies to mitigate the adverse effects of vessel remodeling in patients undergoing TRA across the entire severity spectrum of cardiovascular disease.

INTRODUCTION

Transradial access (TRA) reduces the risk of bleeding and vascular complications after percutaneous coronary intervention (PCI) compared with femoral access.¹ However, following TRA, the radial artery (RA) is subjected to acute injury, dissection, vasospasm, thrombosis, intimal-medial thickening (IMT) and radial artery occlusion (RAO), which may compromise its use as a conduit for future heart catheterization, coronary artery bypass graft surgery, and hemodialysis.^{2,3} Recently, distal transradial access (dTRA) in the “anatomic snuffbox” has been proposed as an alternative RA cannulation site for CAG and PCI.⁴ A recent meta-analysis suggested that dTRA was associated with a lower risk of forearm RAO.⁵ While it is plausible that puncturing the RA more distally might result in less forearm RA IMT, vascular healing following dTRA vs. conventional forearm transradial access (fTRA) has not been compared.

The purpose of the PRESERVE RADIAL Trial (A PRospEctive Randomized Clinical Study Comparing Radial ArTERy Intimal Hyperplasia Following Distal Vs. ForEarm TrandRADIAL Arterial Access for Coronary Angiography) was to determine if dTRA is associated with less ipsilateral forearm RA (FRA) IMT at 90 days compared to fTRA in patients undergoing CAG. Secondly, we aimed to compare other endpoints that reflect procedural ease/success, vascular access site healing, and patient reported ipsilateral upper extremity pain and motor strength.^{6,7}

METHODS

Subjects, Study Design

The study was approved by the Inova Health System's institutional review board, registered at clinicaltrials.gov (Registration number: NCT04801901) and supported by an investigator-initiated research grant from Boston Scientific Corporation (Maple Grove, MN). The study authors were solely responsible for the design and conduct of this study and drafting and editing of the manuscript. Statistical analysis was provided by the George Mason University Department of Biostatistics. The study sample was drawn from consecutive patients undergoing elective and non-emergent CAG and/or PCI at Inova Fairfax Medical Campus. Eligibility criteria included: age \geq 18 years, non-emergent CAG and/or PCI in the setting of symptomatic ischemic heart disease (stable angina, unstable angina, and non-ST segment elevation myocardial infarction). Study subjects had to agree to return for 90-day post-procedural RA ultrasound and completion of BORG and DASH questionnaires for hand pain and functional assessments.^{6,7} Exclusion criteria included: confirmed pregnancy, uncorrected bleeding disorders, inability to take antiplatelet therapy, prior cannulation of both RA's, acute ST-segment myocardial infarction, cardiogenic shock, and known hypersensitivity to stainless steel, platinum, chromium, nickel, molybdenum, or everolimus. In patients with prior RA cannulation, the contralateral vessel was accessed. Patients were randomized 1:1 to dTRA or fTRA using sequentially numbered, opaque sealed envelopes. Permuted block randomization was used to stratify for patient sex to ensure equal distribution of women in each group.⁸ Patient study flow is shown in Figure 1.

Ultrahigh Resolution Ultrasound Imaging Technique

Use of the right or left RA for was left to physician discretion. Distal and FRA segments were evaluated at baseline and 90 days using FUJIFILM VisualSonics 55-MHz ultrahigh

resolution duplex ultrasound. With spatial and lateral resolutions of $<40\ \mu\text{m}$ and $<80\ \mu\text{m}$, respectively, this device distinguishes between the anatomic layers of the RA.⁹ In patients without contraindications, nitroglycerine (0.4 mg) was administered 3-5 minutes prior to ultrasound to provide optimal arterial vasodilation.¹⁰ Patients underwent ultrasound imaging of both the distal and FRA segments at baseline and 90 days. RA IMT was measured using a technique that has been previously reported.¹⁰ For assessment of the FRA, the ultrasound probe was placed over the FRA with imaging beginning at the distal end of the radius bone and progressing proximally. To measure the average IMT over an appropriate length of the vessel, a 3 cm length of the FRA was assessed, starting from centering the probe over the distal radius and moving proximally. Three successive IMT measurements were recorded within each of 3 one centimeter long segments. The numerical mean of all measurements was recorded as the final IMT. For assessment of the dTRA segment, the ultrasound probe was positioned over the triangular depression on the dorsum of the hand bordered by the extensor pollicis brevis and the abductor pollicis longus tendons laterally and by the extensor pollicis longus tendon medially. In a similar manner, three 1 cm segments of vessel were also acquired and the IMT recorded as the numerical mean of all measurements. The IMT was measured as the distance between the intima and media-adventitia interfaces (Figure 2). Final measurements of IMT were validated by an interventional cardiologist (WB) blinded to treatment allocation. Other measurements recorded included RA cross-sectional vessel and lumen diameters. Vessel diameter (i.e., inter-adventitial diameter) was measured as the distance between the media-adventitia interfaces of the anterior and posterior walls of the RA. Lumen diameter was measured as the cross-sectional distance between the anterior and posterior intima. We also assessed for signs of vessel trauma, including

limited access site intimal tears, medial dissections, and RA thrombosis, occlusion and/or pseudoaneurysms.¹⁰

Coronary Angiography and PCI Technique

In patients undergoing dTRA, the right or left hand was positioned with the thumb flexed underneath the other four digits, and the hand positioned above the right groin. After sterile preparation and administration of 2% lidocaine subcutaneously, arterial puncture was performed under ultrasound guidance using a single anterior wall puncture technique. Once access was confirmed, a 0.014”x190 cm hydrophilic Hi-Torque Whisper MS guidewire (Abbott®, Chicago, IL) was advanced under fluoroscopic guidance to the level of the elbow, at which time the access needle was removed, and the coronary wire served as a rail for sheath insertion. insertion of a 6/7 Fr Glidesheath Slender. In patients undergoing fTRA, the hand was supinated and positioned on an arm board directly adjacent to the patient’s ipsilateral hip. Arterial access was obtained using ultrasound guidance and either a single or double-wall puncture (according to physician preference). A 6/7 Fr Glidesheath Slender (Terumo®, Somerset, NJ) was used in both cohorts given its hydrophilic coating and large inner diameter, allowing for advancement of 6 or 7 Fr guide catheters for PCI. All patients received a RA antispasmodic cocktail consisting of 5.0 mg verapamil, 200 mcg nitroglycerine and 5000 units of unfractionated heparin administered through the sheath.¹¹ If PCI was performed, additional I.V. heparin was administered to achieve an activated clotting time (ACT) of 250-300 seconds, or 200-250 seconds if a glycoprotein IIb-IIIa inhibitor was given. Patients undergoing PCI were considered for a SYNERGY or Promus Elite (Boston Scientific, Maple Grove, MN) drug eluting stent; however final stent selection was according to physician discretion. All patients undergoing PCI received dual antiplatelet therapy

with oral aspirin (81 mg) and a P2Y12 platelet inhibitor bolus (600 mg clopidogrel, 60 mg prasugrel or 180 mg ticagrelor).

Radial Artery Hemostasis Protocol

Following CAG and/or PCI, RA hemostasis was achieved using a standardized patent hemostasis protocol.¹¹ In the fTRA cohort, a trained cardiac catheterization laboratory cardiovascular technician or nurse applied a TR Band radial compression device (Terumo®, Somerset, NJ) to the wrist over the access site with the green box on the band placed proximal to the arteriotomy. As the sheath was slowly withdrawn, 15 mL of air was injected into the one-way valve on the TR band, a pulse oximeter placed over the thumb and the plethysmography waveform observed. While performing manual occlusion of the ipsilateral ulnar artery, the hemoband was tightened until the plethysmography waveform was obliterated. The TR band was then loosened 1 mL at a time until the waveform first returned and was maintained, thus confirming patent hemostasis. In the dTRA cohort, a Safeguard Compression Device (Merit Medical®, Jordan, UT) 1-2 mm was applied proximal to the arteriotomy, and 3 mL of air was inflated into the pillow compartment while the sheath was withdrawn. In both patient cohorts, hemostasis was maintained for at least 2 hours following diagnostic CAG and at least 4 hours following PCI.

Statistical Analyses

The primary study endpoint was ipsilateral forearm IMT measured at 90 days. We also compared the change in FRA IMT at 90 days vs. baseline between the dTRA and fTRA cohorts. An intention to treat analysis was used and testing for superiority between the two groups. The null hypothesis assumed no between group difference in FRA IMT at 90 days. From previous studies, we anticipated that 90-day FRA IMT would be approximately 0.34 ± 0.08 mm for the

control group (fTRA).¹⁰ Assuming similar standard deviation and a two-sided test with type 1 error of 0.05, we estimated that a sample size of 56 would provide 90% power to detect a 0.07 mm (20%) difference in 90 day IMT.¹⁰ To account for 10% patient drop-out or lost to follow-up, an additional 3 patients per group would be required. Summary statistics were presented as a mean \pm standard deviation (SD), or frequency and percent, where deemed appropriate. Comparisons were made via Student's *t* test for continuous variables and *chi*-square, or Fisher's exact for discrete variables. Statistical significance was defined as a *p*-value < 0.05 using two-sided tests. Multivariable regression analysis was performed to examine for a relationship between baseline clinical demographics and 90-day FRA IMT. Variables included in the model were those historically associated with incidence of RAO: age, female gender, tobacco use, diabetes, and chronic renal insufficiency.^{11,12} All analyses were performed using R (4.0.2) software for statistical computing.

Secondary Endpoints

Clinical and procedural data were recorded. Secondary endpoints included: number of cannulation attempts to obtain access, TRA failure necessitating cross-over to either an alternative RA or femoral arterial access, total procedure time, radiation exposure (cumulative air kerma and fluoroscopy time), contrast utilization, duration of hemostasis, and incidence of \geq Class III hematomas, as defined by the EASY criteria (Early Discharge after Transradial Stenting of Coronary Arteries Study).¹³ In patients undergoing PCI, procedural outcomes and complications were also recorded, including successful PCI (defined as $<30\%$ residual stenosis with TIMI 3 flow), coronary perforation, in-hospital death, myocardial infarction and urgent revascularization within 24 hours.¹⁴ Other secondary endpoints included patient perceived pain

and function of the ipsilateral hand at 90 days using the Borg and DASH (Disabilities of the Arm, Shoulders, and Hand) scales, respectively^{6,7}. The study consort flow diagram is shown in Figure 1.

RESULTS

Patient and Procedural Characteristics

From October 1, 2021, to March 31, 2022, 64 consecutive patients were randomized: 33 in the dTRA group and 31 in the fTRA cohort. Two patients in the dTRA and 4 in the fTRA cohort were lost-to-follow up. Baseline clinical and procedural characteristics are shown in Tables 1 and 2 and patient study flow in Figure 1. For the overall sample, mean age was 67.5 years, 70% were male, 83% were white, 36% diabetic and 7% had chronic renal failure. There were no differences in baseline clinical characteristics between the dTRA and fTRA cohorts (Table 1). Mean baseline left ventricular ejection fraction was 57%, 80% of patients presented with stable ischemic heart disease and 25% had undergone prior PCI. Seventy two percent of all patients (n=46) underwent right arm TRA. No between group differences were noted in the number of cannulation attempts required for RA access (1.2 vs 1.0, respectively; $p=0.11$), incidence of RA spasm (0% vs 6.5%; $p=0.23$), access site cross-over (3.0% vs 0%; $p=1.0$), radiation exposure (0.6 Gy vs 0.5 Gy; $p=0.48$), contrast utilization (79 cc vs 93 cc; $p=0.34$), and post-procedural hemostasis time (157 mins vs 161 mins; $p=0.86$). Thirty-four percent of all patients (n=22) underwent PCI (33% of dTRA patients vs. 36% of fTRA patients; $p=1.0$), and 19% had adjunctive atherectomy performed (26% of dTRA PCIs vs. 11% of fTRA PCIs; $p=0.41$). All PCIs were successful with no coronary dissections, perforations, or acute stent thromboses. There were no post-procedural RA access site hematomas (EASY Class ≥ 3) in either group.

Baseline Ultrahigh Resolution Ultrasound Results

Baseline RA ultrasound measurements are shown in Table 3. There were no differences in baseline distal RA vessel diameter (2.80 mm vs. 2.92mm, respectively; $p=0.18$), distal RA luminal diameter (2.03 mm vs 2.19 mm; $p=0.08$) and distal RA IMT (0.31 mm vs. 0.31 mm; $p=0.99$). Similarly, there were no differences in baseline forearm RA vessel diameter (3.31 mm vs. 3.35 mm; $p=0.73$), forearm RA luminal diameter, 2.56 vs. 2.64 mm; $p=0.47$) and forearm RA IMT (0.31 mm vs 0.31 mm; $p=0.97$).

90 Day Ultrahigh Resolution Ultrasound and Functional Assessments

Ninety-day ultrasound findings, and Borg and DASH scale assessments are shown in Table 4. Complete data were available for the 58 patients (31 dTRA cohort and 27 fTRA) who completed 90-day ultrasound measurements. There were no differences in 90-day FRA IMT (0.37 mm vs 0.38 mm; $p=0.73$), change in IMT (+0.07 mm vs +0.07 mm; $p=0.61$), vessel diameter (3.04 vs. 2.95 mm; $p=0.48$), change in vessel diameter (-0.29 mm vs. -0.39 mm; $p=0.13$), luminal diameter (2.32 mm vs. 2.34 mm; $p=0.85$), and change in luminal diameter (-0.25 mm vs -0.32 mm, $p=0.27$) (Figure 3). No access site intimal tears, dissections, RA occlusions or RA pseudoaneurysms were noted at 90 days and there were no differences in 90-day Borg pain scale (12 vs 11; $p=0.24$) or DASH scores (6 vs 8; $p=0.46$).

Ultrasound of the distal RA showed significant differences between groups. At 90 days, patients in the dTRA group showed greater distal RA IMT (0.38 mm vs 0.31 mm; $p < 0.001$), larger increase in dTRA IMT (+0.07 vs. 0.00; $p<0.001$), smaller distal RA vessel diameter (2.47mm vs. 2.87mm; $p<0.001$), greater reduction in distal RA vessel diameter (-0.33 mm vs. -

0.03 mm; $p < 0.001$), smaller distal RA luminal diameter (1.77 mm vs 2.20 mm; $p < 0.001$) and greater reduction in distal RA luminal diameter (-0.26 mm vs. 0.00 mm; $p < 0.001$) compared to those undergoing fTRA. Multivariable regression analysis identified age and diabetes mellitus as the only independent predictors of 90-day forearm IMT. With every 1-year increase in age, there was a 1.5×10^{-3} mm increase in forearm RA IMT at 90 days (95% CI: 0.78×10^{-3} to 0.28×10^{-2} ; $p < 0.01$). Similarly, diabetes mellitus was associated with a 2.3×10^{-2} mm increase in forearm RA IMT at 90 days (95% CI: 0.13×10^{-2} to 0.55×10^{-1} ; $p = 0.04$).

DISCUSSION

The PRESERVE-RADIAL Trial is the first to compare RA access site healing in patients undergoing dTRA vs. fTRA for CAG and PCI. We found that, compared to conventional fTRA, dTRA was associated with (1) no significant difference in 90-day FRA IMT; (2) no significant change in FRA vessel or luminal diameter at 90 days; (3) increased 90-day distal RA IMT; (4) favorable patterns of vascular healing; and (5) no significant difference in 90-day ipsilateral upper extremity pain and motor strength (Figure 4).

While prior studies have demonstrated the feasibility of dTRA for CAG, little is known about differences in vessel healing compared to conventional fTRA^{11,15}. In addition to potential ergonomic benefits and post-procedural comfort for the patient, dTRA has been reported to be associated with less FRA occlusion, perhaps due to collateral networks between the distal radial and ulnar arteries by way of the superficial and deep palmar arches¹⁶. We hypothesized that more distal RA puncture would be associated with less FRA IMT. This was not the case,

suggesting that RA remodeling may result not only from direct vessel puncture, but also advancement of the sheath into the more proximal segment.

Several studies have compared the risk of RAO between dTRA and fTRA. A recent contemporary meta-analysis of 14 randomized controlled trials (n=6,208 patients) comparing dTRA vs. fTRA for CAG noted a nearly 2/3 reduction in the risk of in-hospital and 60-day RAO with dTRA.⁵ DTRA was also associated with fewer EASY \geq II hematomas, but more time for RA cannulation, more puncture attempts, and higher access site crossover. This contrasts with our findings which may be due to the increased operator experience and adoption of standardized vascular access and patent hemostasis protocols in our center. These are similar findings to those noted in the DISCO RADIAL (Distal vs Conventional Radial Access) trial, in which the incidence of RAO with both dTRA and fTRA was <1%.¹⁷

RA remodeling, a process that occurs over weeks to months following TRA, is triggered by acute vessel wall trauma at the time of sheath insertion and subsequent inflammatory processes that signal medial smooth muscle cells to migrate into the intima and deposit extracellular matrix.¹⁸ These events ultimately translate into a nearly 20% reduction in RA diameter.¹⁰ Using a similar technique to our study, the PRAGMATIC Trial also described changes in IMT and vascular trauma following TRA.¹⁰ Although the degree of IMT (0.07mm) noted in our study is comparable to that reported in PRAGMATIC, we observed less arterial shrinkage (10-12% vs. 20%).¹⁰ We postulate that this may be due to our study's use of a "frictionless" hydrophilic RA sheath, however, this remains speculative. Using 40 MHz ultrasound, the Rotterdam Radial Artery Research Study showed frequent signs of vascular injury with nearly 90% of cases showing evidence of RA dissection, 74% showing intramural hematomas and there was a 45% increase in RA IMT.¹⁹ Other imaging techniques, including

intravascular ultrasound and optical coherence tomography, have also shown neo-intimal thickening, vessel shrinkage, loss of vasomotor function, and reduced long-term RA patency.^{2,3,20-22} It has been proposed that the factors associated with Virchow's triad are implicated in RAO, namely endothelial injury, stasis of blood, and hypercoagulability.¹¹ We also believe that RA trauma induced by vessel puncture and sheath advancement and the degree to which RA flow is maintained after sheath removal contribute to the risk of RAO especially with using ulnar artery compression. Still, an improved understanding of RA remodeling, in particular intimal hyperplasia, is necessary to fully understand these dynamics and mitigate against the pathologic changes that may compromise the RA for future access.

A substantial number of patients require repeat TRA heart catheterization, due to complications following the index PCI or to facilitate staged revascularization.²³ While the safety and feasibility of repeat ipsilateral TRA has been demonstrated, procedural failure due to RAO occurs in nearly 6% of patients undergoing a second procedure, and in 13% requiring a third.^{23,24} When the RA has been previously cannulated for CAG, patients undergoing coronary artery bypass graft surgery with the RA as a conduit show a higher rate of RA graft occlusion within 30 days.²⁰ Intimal hyperplasia, adventitial inflammation and periarterial tissue necrosis have been thought to contribute to reduced RA graft patency in this setting.^{20,25} Although we hypothesized that dTRA might provide an advantage to fTRA by reducing FRA intimal hyperplasia, our study results did not confirm this. RA intimal hyperplasia and adverse remodeling were not governed by the location of access site puncture, but instead by other factors, such as age and diabetes mellitus.

Increased age and diabetes mellitus predicted IMT in our study. Both are known to increase inflammatory cytokines, decrease nitric oxide synthetase, and impair endothelial function.²⁶ Previous studies have shown that other patient characteristics (female sex, low body mass index, diabetes and South Asian ethnicity), and procedural factors (multiple puncture attempts, insufficient anticoagulation, sheath-to-artery ratio > 1 and prolonged hemostasis) may also contribute to the risk of RA occlusion.^{11,19,27-29} Further investigation is required to better understand the clinical and procedural factors that contribute to adverse RA remodeling.

Limitations:

The sample size of our trial was relatively small. However, we had > 90% power to detect a 20% change in IMT at 90 days. Still, the lack of differences in secondary endpoints may have been due to Type 2 error. While we believe that our study was representative of real-world clinical practice, the findings may not be fully generalizable to centers that do not use standardized TRA access and hemostasis protocols. Finally, we excluded patients with ST-segment elevation myocardial infarction and/or cardiogenic shock who have greater degrees of inflammation, vasoconstriction, and risk of thrombosis.^{30,31}

Conclusion:

In this single-center study of patients undergoing elective TRA for CAG, we observed no difference in 90-day FRA IMT between dTRA and FTRA. The two access strategies shared similar procedural outcomes, vascular healing patterns and pain/functional outcomes. Age and diabetes independently predicted IMT. Further investigation is warranted to better understand the

dynamics of RA healing and to identify strategies aimed at preserving RA integrity for future access.

Acknowledgements:

The authors would like to acknowledge the Dudley Family for their continued contributions and support of the Inova Dudley Family Center for Cardiovascular Innovation. Graphic design support was provided by Ms. Devon Stuart under the guidance and direction of the authors.

Sources for Funding:

This study was supported by an investigator-initiated research grant from Boston Scientific Corporation (Maple Grove, MN)

Disclosures:

Dr. Tehrani serves on the advisory board for Abbott and he has received research grants from Boston Scientific. He also served as a consultant for Boston Scientific. Dr. Damluji receives research funding from the Pepper Scholars Program of the Johns Hopkins University Claude D. Pepper Older Americans Independence Center funded by the National Institute on Aging P30-AG021334 and mentored patient-oriented research career development award from the National Heart, Lung, and Blood Institute K23-HL153771-01. Dr. Batchelor serves as consultant for Boston Scientific, Abbott, Edwards, Medtronic and V-Wave. All other authors report no disclosures or conflicts of interest relevant to this manuscript.

REFERENCES

1. Valgimigli M, Frigoli E, Leonardi S, Vranckx P, Rothenbühler M, Tebaldi M, Varbella F, Calabrò P, Garducci S, Rubartelli P, et al. Radial versus femoral access and bivalirudin versus unfractionated heparin in invasively managed patients with acute coronary syndrome (MATRIX): final 1-year results of a multicentre, randomised controlled trial. *Lancet*. 2018;392:835-848. doi: 10.1016/s0140-6736(18)31714-8
2. Wakeyama T, Ogawa H, Iida H, Takaki A, Iwami T, Mochizuki M, Tanaka T. Intima-media thickening of the radial artery after transradial intervention: An intravascular ultrasound study. *Journal of the American College of Cardiology*. 2003;41:1109-1114. doi: [https://doi.org/10.1016/S0735-1097\(03\)00089-5](https://doi.org/10.1016/S0735-1097(03)00089-5)
3. Yonetsu T, Kakuta T, Lee T, Takayama K, Kakita K, Iwamoto T, Kawaguchi N, Takahashi K, Yamamoto G, Iesaka Y, et al. Assessment of acute injuries and chronic intimal thickening of the radial artery after transradial coronary intervention by optical coherence tomography. *Eur Heart J*. 2010;31:1608-1615. doi: 10.1093/eurheartj/ehq102
4. Ferdinand K. Left distal transradial access in the anatomical snuffbox for coronary angiography (ldTRA) and interventions (ldTRI). *EuroIntervention*. 2017;13:851-857.
5. Ferrante G, Condello F, Rao SV, Maurina M, Jolly S, Stefanini GG, Reimers B, Condorelli G, Lefèvre T, Pancholy SB, et al. Distal vs Conventional Radial Access for Coronary Angiography and/or Intervention. *JACC: Cardiovascular Interventions*. 2022;15:2297-2311. doi: doi:10.1016/j.jcin.2022.09.006
6. Jester A, Harth A, Wind G, Germann G, Sauerbier M. Disabilities of the arm, shoulder and hand (DASH) questionnaire: Determining functional activity profiles in patients with

- upper extremity disorders. *J Hand Surg Br.* 2005;30:23-28. doi: 10.1016/j.jhsb.2004.08.008
7. Williams N. The Borg Rating of Perceived Exertion (RPE) scale. *Occupational Medicine.* 2017;67:404-405. doi: 10.1093/occmed/kqx063
 8. Kim Y, Ahn Y, Kim MC, Sim DS, Hong YJ, Kim JH, Jeong MH. Gender differences in the distal radial artery diameter for the snuffbox approach. *Cardiol J.* 2018;25:639-641. doi: 10.5603/cj.2018.0128
 9. Foster FS, Mehi J, Lukacs M, Hirson D, White C, Chaggares C, Needles A. A new 15-50 MHz array-based micro-ultrasound scanner for preclinical imaging. *Ultrasound Med Biol.* 2009;35:1700-1708. doi: 10.1016/j.ultrasmedbio.2009.04.012
 10. Batchelor W, Dahya V, McGee D, Katopodis J, Dixon W, Campbell J, Meredith A, Knap P, Parkin M, Noel T. Ultrahigh-resolution ultrasound characterization of access site trauma and intimal hyperplasia following use of a 7F sheathless guide versus 6F sheath/guide combination for transradial artery PCI: Results of the PRAGMATIC trial. *Am Heart J.* 2018;198:75-83. doi: 10.1016/j.ahj.2017.11.017
 11. Bernat I, Aminian A, Pancholy S, Mamas M, Gaudino M, Nolan J, Gilchrist IC, Saito S, Hahalis GN, Ziakas A, et al. Best Practices for the Prevention of Radial Artery Occlusion After Transradial Diagnostic Angiography and Intervention: An International Consensus Paper. *JACC Cardiovasc Interv.* 2019;12:2235-2246. doi: 10.1016/j.jcin.2019.07.043
 12. Avdikos G, Karatasakis A, Tsoumeleas A, Lazaris E, Ziakas A, Koutouzis M. Radial artery occlusion after transradial coronary catheterization. *Cardiovasc Diagn Ther.* 2017;7:305-316. doi: 10.21037/cdt.2017.03.14

13. Bertrand OF, Larochelière RD, Rodés-Cabau J, Proulx G, Gleeton O, Nguyen CM, Déry J-P, Barbeau G, Noël B, Larose É, et al. A Randomized Study Comparing Same-Day Home Discharge and Abciximab Bolus Only to Overnight Hospitalization and Abciximab Bolus and Infusion After Transradial Coronary Stent Implantation. *Circulation*. 2006;114:2636-2643. doi: doi:10.1161/CIRCULATIONAHA.106.638627
14. Chun Chin C, Norihiro K, Yoshinobu O, Robert AB, Davide C, Stephan W, Marie-Angèle M, Donald EC, Mitchell WK, Gregg WS, et al. Defining device success for percutaneous coronary intervention trials: a position statement from the European Association of Percutaneous Cardiovascular Interventions of the European Society of Cardiology. *EuroIntervention*. 2020;15:1190-1198.
15. Kiemeneij F. Left distal transradial access in the anatomical snuffbox for coronary angiography (ldTRA) and interventions (ldTRI). *EuroIntervention*. 2017;13:851-857. doi: 10.4244/eij-d-17-00079
16. Sgueglia GA, Di Giorgio A, Gaspardone A, Babunashvili A. Anatomic Basis and Physiological Rationale of Distal Radial Artery Access for Percutaneous Coronary and Endovascular Procedures. *JACC Cardiovasc Interv*. 2018;11:2113-2119. doi: 10.1016/j.jcin.2018.04.045
17. Aminian A, Sgueglia GA, Wiemer M, Kefer J, Gasparini GL, Ruzsa Z, van Leeuwen MAH, Ungureanu C, Leibundgut G, Vandeloos B, et al. Distal Versus Conventional Radial Access for Coronary Angiography and Intervention: The DISCO RADIAL Trial. *JACC Cardiovasc Interv*. 2022;15:1191-1201. doi: 10.1016/j.jcin.2022.04.032

18. Mamas MA, Fraser DG, Ratib K, Fath-Ordoubadi F, El-Omar M, Nolan J, Neyses L. Minimising radial injury: prevention is better than cure. *EuroIntervention*. 2014;10:824-832. doi: 10.4244/eijv10i7a142
19. Costa F, Leeuwen MAHv, Daemen J, Diletti R, Kauer F, Geuns R-Jv, Ligthart J, Witberg K, Zijlstra F, Valgimigli M, et al. The Rotterdam Radial Access Research. *Circulation: Cardiovascular Interventions*. 2016;9:e003129. doi: doi:10.1161/CIRCINTERVENTIONS.115.003129
20. Kamiya H, Ushijima T, Kanamori T, Ikeda C, Nakagaki C, Ueyama K, Watanabe G. Use of the radial artery graft after transradial catheterization: is it suitable as a bypass conduit? *Ann Thorac Surg*. 2003;76:1505-1509. doi: 10.1016/s0003-4975(03)01018-x
21. Burstein JM, Gidrewicz D, Hutchison SJ, Holmes K, Jolly S, Cantor WJ. Impact of radial artery cannulation for coronary angiography and angioplasty on radial artery function. *Am J Cardiol*. 2007;99:457-459. doi: 10.1016/j.amjcard.2006.08.055
22. Ijaz N, Buta B, Xue Q-L, Mohess DT, Bushan A, Tran H, Batchelor W, deFilippi CR, Walston JD, Bandeen-Roche K, et al. Interventions for Frailty Among Older Adults With Cardiovascular Disease. *Journal of the American College of Cardiology*. 2022;79:482-503. doi: doi:10.1016/j.jacc.2021.11.029
23. Barria Perez AE, Costerousse O, Cieza T, Barbeau G, Déry JP, Maes F, Rimac G, Plourde G, Poirier Y, Carrier MA, et al. Feasibility and Safety of Early Repeat Transradial Access Within 30 Days of Previous Coronary Angiography and Intervention. *Am J Cardiol*. 2017;120:1267-1271. doi: 10.1016/j.amjcard.2017.07.009

24. Charalambous MA, Constantinides SS, Talias MA, Soteriades ES, Christou CP. Repeated transradial catheterization: feasibility, efficacy, and safety. *Tex Heart Inst J*. 2014;41:575-578. doi: 10.14503/thij-13-4000
25. Staniloae CS, Mody KP, Sanghvi K, Mindrescu C, Coppola JT, Antonescu CR, Shah S, Patel T. Histopathologic changes of the radial artery wall secondary to transradial catheterization. *Vasc Health Risk Manag*. 2009;5:527-532. doi: 10.2147/vhrm.s5468
26. Assar ME, Angulo J, Rodríguez-Mañas L. Diabetes and ageing-induced vascular inflammation. *J Physiol*. 2016;594:2125-2146. doi: 10.1113/jp270841
27. Kotowycz MA, Johnston KW, Ivanov J, Asif N, Almoghairi AM, Choudhury A, Nagy CD, Sibbald M, Chan W, Seidelin PH, et al. Predictors of Radial Artery Size in Patients Undergoing Cardiac Catheterization: Insights From the Good Radial Artery Size Prediction (GRASP) Study. *Canadian Journal of Cardiology*. 2014;30:211-216. doi: <https://doi.org/10.1016/j.cjca.2013.11.021>
28. Pancholy S, Coppola J, Patel T, Roke-Thomas M. Prevention of radial artery occlusion-patent hemostasis evaluation trial (PROPHET study): a randomized comparison of traditional versus patency documented hemostasis after transradial catheterization. *Catheter Cardiovasc Interv*. 2008;72:335-340. doi: 10.1002/ccd.21639
29. Aminian A, Saito S, Takahashi A, Bernat I, Jobe RL, Kajiya T, Gilchrist IC, Louvard Y, Kiemeneij F, van Royen N, et al. Impact of sheath size and hemostasis time on radial artery patency after transradial coronary angiography and intervention in Japanese and non-Japanese patients: A substudy from RAP and BEAT (Radial Artery Patency and Bleeding, Efficacy, Adverse event) randomized multicenter trial. *Catheter Cardiovasc Interv*. 2018;92:844-851. doi: 10.1002/ccd.27526

30. Jolly SS, Yusuf S, Cairns J, Niemelä K, Xavier D, Widimsky P, Budaj A, Niemelä M, Valentin V, Lewis BS, et al. Radial versus femoral access for coronary angiography and intervention in patients with acute coronary syndromes (RIVAL): a randomised, parallel group, multicentre trial. *Lancet*. 2011;377:1409-1420. doi: 10.1016/s0140-6736(11)60404-2
31. Tehrani BN, Damluji AA, Sherwood MW, Rosner C, Truesdell AG, Epps KC, Howard E, Barnett SD, Raja A, deFilippi CR, et al. Transradial access in acute myocardial infarction complicated by cardiogenic shock: Stratified analysis by shock severity. *Catheter Cardiovasc Interv*. 2021;97:1354-1366. doi: 10.1002/ccd.29098

Figure Legends

Figure 1. PRESERVE Radial Consort Flow Diagram and Study Design.

Abbreviations: dTRA = distal transradial access; FRA = forearm radial artery; fTRA= Forearm transradial access; IMT = intimal medial thickness; US = ultrasound.

Figure 2. Two-dimensional ultrahigh resolution ultrasound of radial arterial intimal medial thickness (IMT) using a 55 MHz probe. IMT was measured as the distance from the intima to the outer edge of the media.

Figure 3. Box and whisker plots depicting the change in forearm radial artery intimal medial thickness from baseline to 90 days.

Figure 4. PRESERVE Radial Study Main Findings. Using ultrahigh resolution ultrasound, no differences were noted in forearm radial artery IMT at 90 days in patients randomized to dTRA vs. fTRA for coronary angiography. Number of cannulation attempts, time to RA access, procedure time, radiation exposure, access site hematomas, and patient reported hand pain and functional endpoints were similar between the groups.

Table 1: Baseline Clinical Characteristics

	dTRA (N=33)	fTRA (N=31)	Total (N=64)	p value
Age (years)	66.4 ± 11.4	68.7 ± 13.6	67.5 ± 12.4	0.46
Sex				1.00
Male	23 (69.7%)	22 (71.0%)	45 (70.3%)	
Female	10 (30.3%)	9 (29.0%)	19 (29.7%)	
Race				0.53
White	26 (78.8%)	27 (87.1%)	53 (82.8%)	
Black	4 (12.1%)	2 (6.5%)	6 (9.4%)	
Asian	0 (0.0%)	1 (3.2%)	1 (1.6%)	
Other	3 (9.1%)	1 (3.2%)	4 (6.2%)	
Ethnicity				0.61
Hispanic	1 (3.0%)	2 (6.5%)	3 (4.7%)	
Other	32 (97.0%)	29 (93.5%)	61 (95.3%)	
Median BMI	32.6 (6.8)	31.3 (7.2)	32.0 (7.0)	0.47
Hypertension	17 (51.5%)	14 (45.2%)	31 (48.4%)	0.63
Diabetes	12 (36.4%)	11 (35.5%)	23 (35.9%)	1.00
Chronic renal failure	3 (9.4%)	1 (3.3%)	4 (6.5%)	0.61
Atrial fibrillation	8 (25.8%)	3 (10.0%)	11 (18.0%)	0.18
Peripheral Vascular Disease	3 (9.1%)	6 (19.4%)	9 (14.1%)	0.30
Prior PCI	9 (27.3%)	7 (22.6%)	16 (25.0%)	0.78
LV Ejection Fraction	58.6 (10.6)	55.7 (11.9)	57.2 (11.2)	0.32
Clinical presentation				0.49
Stable ischemic heart disease	28 (84.8%)	22 (71.0%)	50 (78.1%)	
NSTEMI	4 (12.1%)	5 (16.1%)	9 (14.1%)	
Unstable angina	1 (3.0%)	2 (6.5%)	3 (4.7%)	
Cardiomyopathy	0 (0.0%)	2 (6.5%)	2 (3.1%)	
ASA	22 (66.7%)	19 (61.3%)	41 (64.1%)	0.80
Clopidogrel	10 (30.3%)	7 (22.6%)	17 (26.6%)	0.58
Prasugrel	0 (0.0%)	1 (3.2%)	1 (1.6%)	0.48
Ticagrelor	0 (0.0%)	1 (3.2%)	1 (1.6%)	0.48
Oral anticoagulation	3 (9.1%)	0 (0.0%)	3 (4.7%)	0.24
Beta-blocker	21 (63.6%)	23 (74.2%)	44 (68.8%)	0.43
ACE-i/ARB	18 (54.5%)	12 (38.7%)	30 (46.9%)	0.22
ARNI	1 (3.0%)	4 (12.9%)	5 (7.8%)	0.19
MRA	0 (0.0%)	1 (3.2%)	1 (1.6%)	0.48
Statin	25 (75.8%)	29 (93.5%)	54 (84.4%)	0.08
Nitrate	4 (12.1%)	2 (6.5%)	6 (9.4%)	0.67

Abbreviation: ASA = aspirin; ACE-I = angiotensin converting enzyme inhibitor; ARB = angiotensin receptor blocker; ARNI = angiotensin receptor neprilysin inhibitor; BMI = body mass index; dTRA = distal transradial access; fTRA = forearm transradial access; LV = left ventricle; MI = myocardial infarction; MRA = mineralocorticoid receptor antagonist; NSTEMI = non-ST segment myocardial infarction; PCI = percutaneous coronary intervention.

Table 2: Procedural Characteristics

	dTRA (N=33)	fTRA (N=31)	Total (N=64)	p value
Arm accessed				1.00
Left	9 (27.3%)	9 (29.0%)	18 (28.1%)	
Right	24 (72.7%)	22 (71.0%)	46 (71.9%)	
No. of cannulation attempts	1.2 (0.4)	1.0 (0.2)	1.1 (0.3)	0.11
RA access time (seconds)	55.5 (40.4)	42.4 (13.2)	49.1 (30.9)	0.09
Antispasmodic cocktail				
Heparin	33 (100.0%)	31 (100.0%)	64 (100.0%)	1.00
Verapamil	33 (100.0%)	31 (100.0%)	64 (100.0%)	1.00
Nitroglycerine	33 (100.0%)	31 (100.0%)	64 (100.0%)	1.00
RA spasm	0 (0.0%)	2 (6.5%)	2 (3.1%)	0.23
Access site cross over	1 (3.0%)	0 (0.0%)	1 (1.6%)	1.00
Single wall puncture	33 (100.0%)	24 (77.4%)	57 (89.1%)	0.00
Diagnostic angiogram only	19 (57.6%)	18 (58.1%)	37 (57.8%)	1.00
Atherectomy	5 (26.3%)	2 (11.1%)	7 (18.9%)	0.41
Number of diagnostic catheters	1.5 (0.8)	1.8 (0.7)	1.7 (0.8)	0.09
Number of PCI guide catheters	0.5 (0.6)	0.5 (0.6)	0.5 (0.6)	0.98
Cumulative air kerma (Gy)	0.6 (0.6)	0.5 (0.5)	0.5 (0.5)	0.48
Total contrast utilization (mL)	79.2 (48.0)	93.0 (64.1)	85.8 (56.2)	0.34
Total hemostasis time (minutes)	157.4 (77.3)	160.9 (86.2)	159.1 (81.1)	0.86
Same day discharge	25 (78.1%)	20 (64.5%)	45 (71.4%)	0.27
Hospital duration (days)	0.7 (1.1)	1.1 (1.5)	0.9 (1.3)	0.21
PCI performed	11 (33.3%)	11 (35.5%)	22 (34.4%)	1.00
Successful PCI	11 (100.0%)	11 (100.0%)	22 (100.0%)	1.00
Coronary dissection/perforation	0 (0.0%)	0 (0.0%)	0 (0.0%)	1.00
Acute stent thrombosis	0 (0.0%)	0 (0.0%)	0 (0.0%)	1.00
Hematoma (EASY Class \geq III)	0 (0.0%)	0 (0.0%)	0 (0.0%)	1.00

Abbreviations: dTRA = distal transradial access; EASY = Early Discharge after Transradial Stenting of Coronary Arteries Study; fTRA= forearm transradial access; GY = Gray units; PCI = percutaneous coronary intervention; RA = radial artery.

Table 3: Baseline Ultrasound RA Measurements

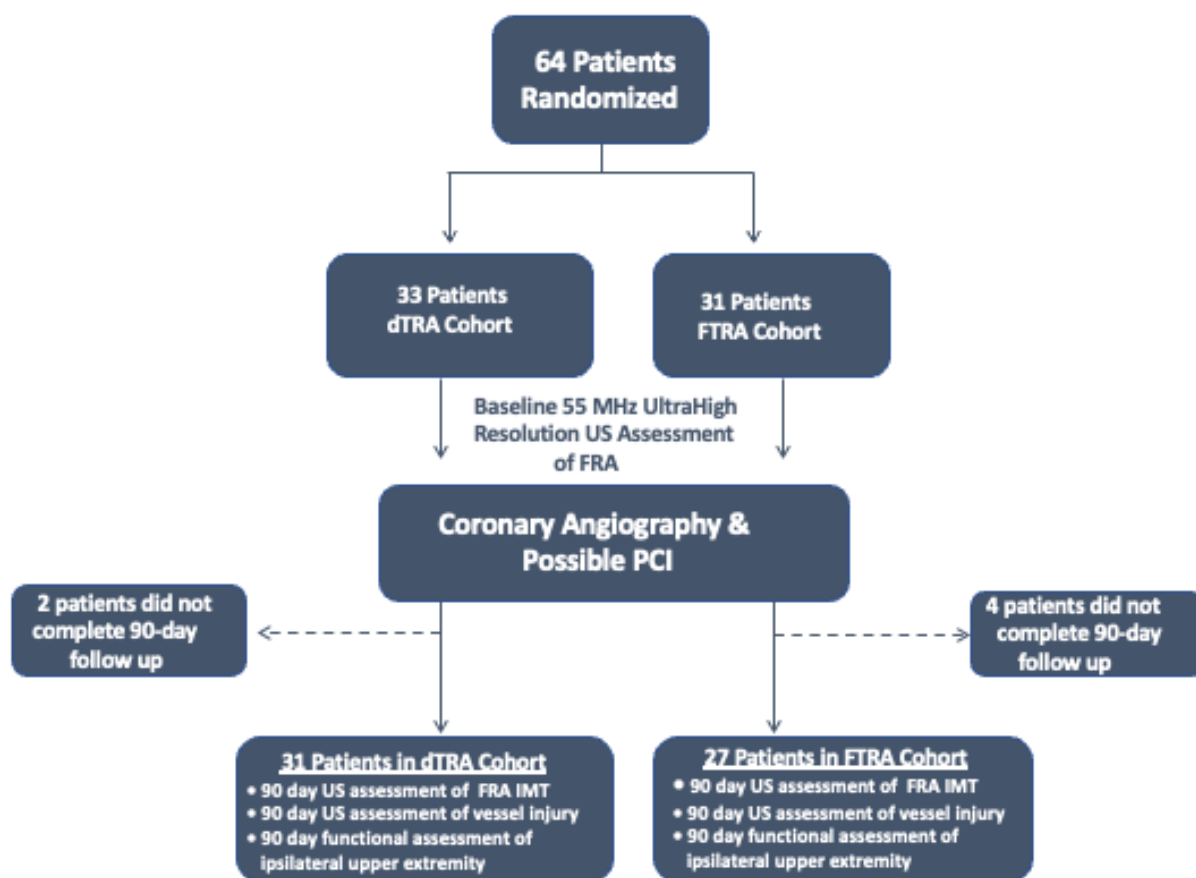
	dTRA (N=33)	fTRA (N=31)	Total (N=64)	p value
dRA vessel diameter (mm)	2.80 (0.39)	2.92 (0.34)	2.86 (0.37)	0.18
dRA luminal diameter (mm)	2.03 (0.39)	2.19 (0.32)	2.11 (0.36)	0.08
dRA IMT (mm)	0.31 (0.06)	0.31 (0.05)	0.31 (0.05)	0.99
FRA vessel diameter (mm)	3.31 (0.53)	3.35 (0.42)	3.33 (0.48)	0.73
FRA luminal diameter (mm)	2.56 (0.47)	2.64 (0.43)	2.60 (0.45)	0.47
FRA IMT (mm)	0.31 (0.05)	0.31 (0.05)	0.31 (0.05)	0.97

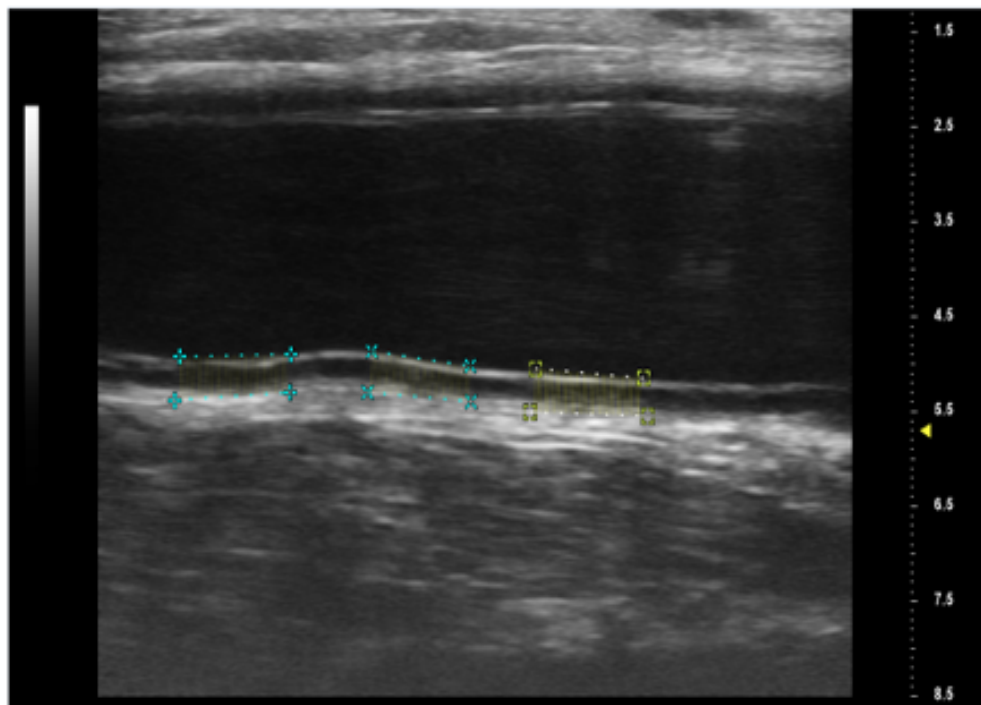
Abbreviations: dRA = distal radial artery (“snuffbox”); fRA = forearm radial artery; IMT = intimal medial thickness.

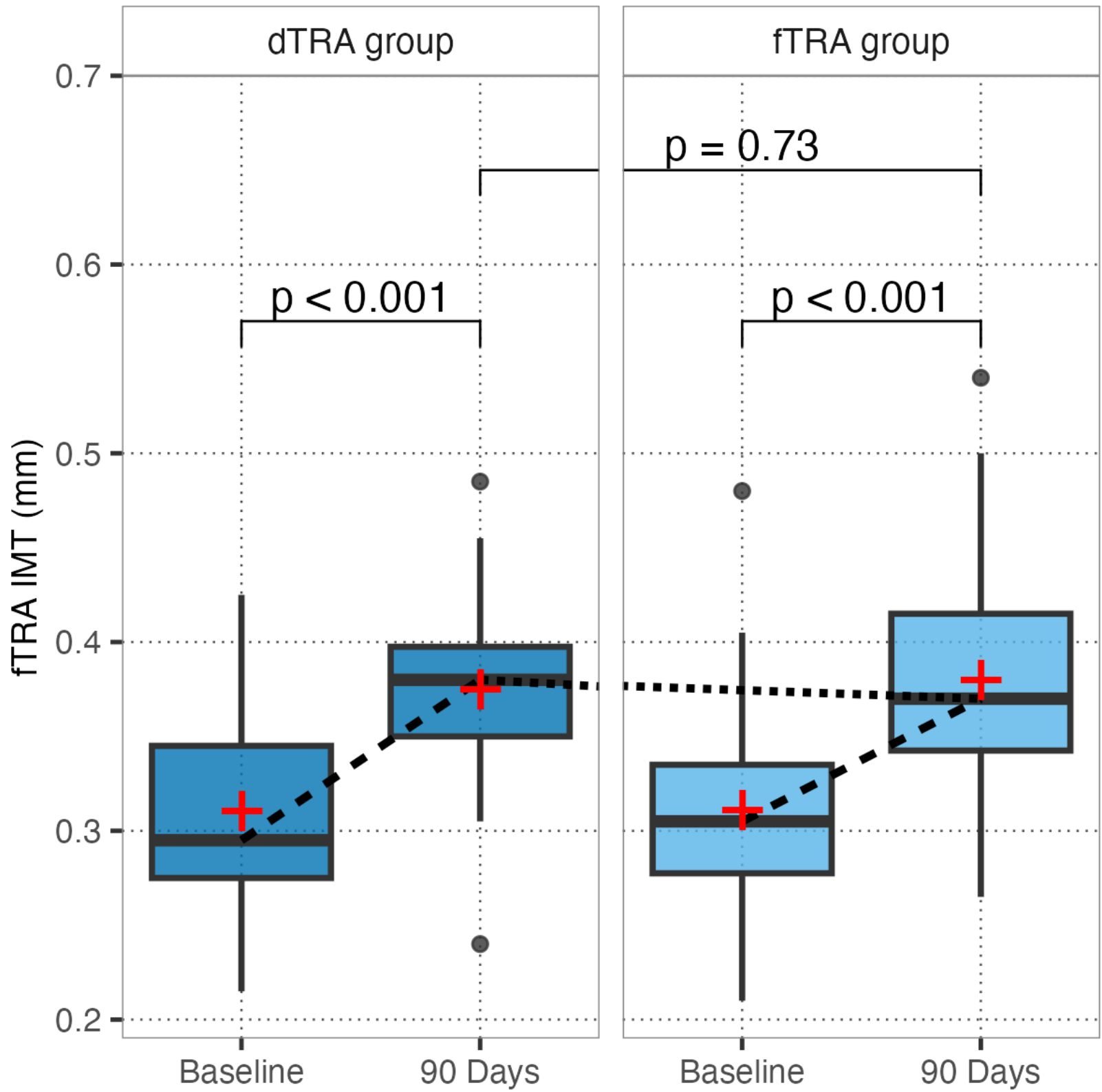
Table 4: 90-day Ultrasound Findings and Functional Assessments

	dTRA (N=31)	fTRA (N=27)	Total (N=58)	p value
90 Day Forearm RA Measurements				
FRA IMT (mm)	0.37 (0.05)	0.38 (0.06)	0.38 (0.05)	0.73
FRA IMT change from baseline (mm)	0.07 (0.05)	0.07 (0.04)	0.07 (0.04)	0.61
FRA vessel diameter (mm)	3.04 (0.54)	2.95 (0.40)	3.00 (0.48)	0.48
FRA change in vessel diameter (mm)	-0.29 (0.25)	-0.39 (0.27)	-0.34 (0.260)	0.13
FRA luminal diameter (mm)	2.32 (0.53)	2.34 (0.47)	2.33 (0.49)	0.85
FRA change in luminal diameter (mm)	-0.25 (0.25)	-0.32 (0.24)	-0.28 (0.25)	0.27
90 Day Distal RA Measurements				
dRA IMT (mm)	0.38 (0.06)	0.31 (0.05)	0.35 (0.06)	< 0.001
dRA IMT change from baseline (mm)	0.07 (0.04)	0.00 (0.02)	0.04 (0.04)	< 0.001
dRA vessel diameter (mm)	2.47 (0.38)	2.87 (0.27)	2.66 (0.39)	< 0.001
dRA change in vessel diameter (mm)	-0.33 (0.25)	-0.03 (0.16)	-0.19 (0.26)	< 0.001
dRA luminal diameter (mm)	1.77 (0.37)	2.20 (0.31)	1.97 (0.40)	< 0.001
dRA change in luminal diameter (mm)	-0.26 (0.25)	0.00 (0.12)	-0.14 (0.24)	< 0.001
Other 90 Day Findings				
Limited Access Site Intimal Tears	0 (0.0%)	0 (0.0%)	0 (0.0%)	1.00
Dissection	0 (0.0%)	0 (0.0%)	0 (0.0%)	1.00
RA occlusion	0 (0.0%)	0 (0.0%)	0 (0.0%)	1.00
RA pseudoaneurysm	0 (0.0%)	0 (0.0%)	0 (0.0%)	1.00
Borg Scale Pain	11.5 (3.4)	10.56 (2.6)	11.1 (3.1)	0.24
DASH Score	5.7 (10.2)	8.0 (12.9)	6.8 (11.5)	0.46

Abbreviation: dRA = distal radial artery; dTRA = distal transradial arterial access; FRA = forearm radial artery; fTRA = forearm transradial arterial access; IMT = intimal medial thickness; RA = radial artery; DASH = Disabilities of Arm, Shoulder, and Hand Scale.

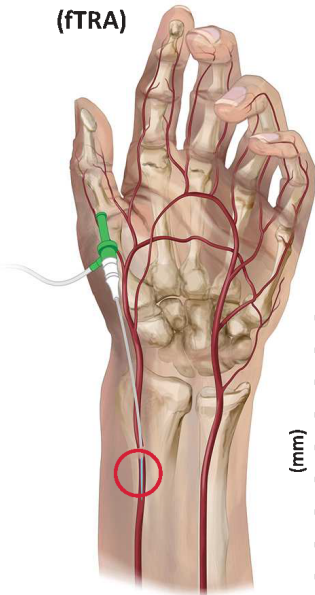




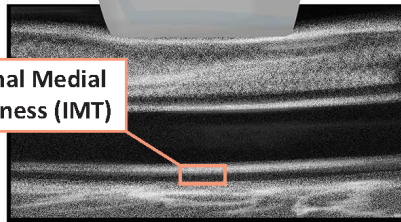


PRESERVE Radial Trial Main Findings

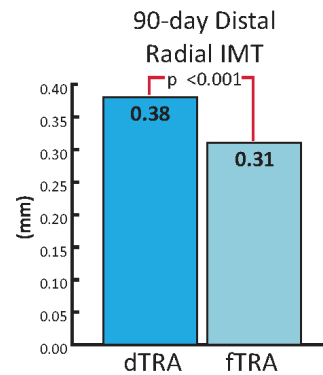
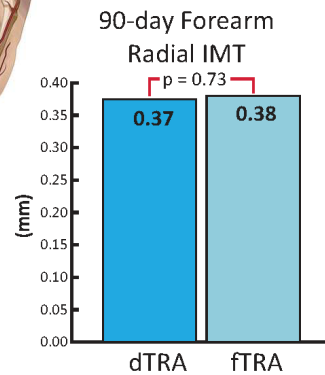
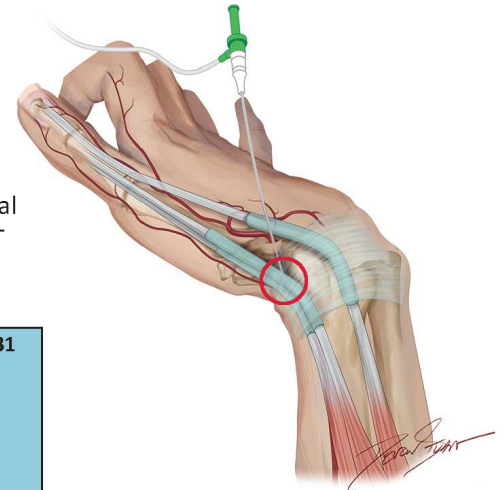
Standard Forearm
Transradial Access
(fTRA)



Intimal Medial
Thickness (IMT)



Snuffbox Distal
Radial Access
(dTRA)



Secondary Findings

