

Post-birth exposure contrasts for children during the Household Air Pollution Intervention Network randomized controlled trial

Ajay Pillarisetti (co-first)^{1*}, Wenlu Ye (co-first)¹, Kalpana Balakrishnan², Ghislaine Rosa³, Anaité Díaz-Artiga⁴, Lindsay J. Underhill⁵, Kyle Steenland⁶, Jennifer L. Peel⁷, Miles A. Kirby⁸, John McCracken⁹, Lance Waller¹⁰, Howard Chang¹⁰, Jiantong Wang¹⁰, Ephrem Dusabimana¹¹, Florian Ndagijimana¹¹, Sankar Sambandam², Krishnendu Mukhopadhyay², Katherine A. Kearns⁹, Devan Campbell⁹, Jacob Kremer⁹, Joshua Rosenthal¹², Ahana Ghosh¹³, Maggie Clark⁷, William Checkley¹⁴, Thomas Clasen⁶, Luke Naeher⁹, Ricardo Piedrahita¹³, Michael Johnson^{13*}, and on behalf of the Household Air Pollution Intervention Network (HAPIN) trial Investigators[†]

¹Division of Environmental Health Sciences, School of Public Health, University of California, Berkeley, CA, USA

²Department of Environmental Health Engineering, ICMR Center for Advanced Research on Air Quality, Climate and Health, Sri Ramachandra Institute for Higher Education and Research (Deemed University), Chennai, India

³Clean Air (Africa) Global Health Research Group, University of Liverpool, Liverpool, UK

⁴Center for Health Studies, Universidad del Valle de Guatemala, Guatemala City, Guatemala

⁵Cardiovascular Division, Washington University School of Medicine, St Louis, MO, USA

⁶Gangarosa Department of Environmental Health, Emory University, Atlanta, GA, USA

⁷Department of Environmental and Radiological Health Sciences, Colorado State University, Fort Collins, CO, USA

⁸Department of Global Health and Population, Harvard T H Chan School of Public Health, Harvard University, Boston, MA, USA

⁹Department of Environmental Health Sciences, University of Georgia, Athens, GA, USA

¹⁰Department of Biostatistics and Bioinformatics, Emory University, Atlanta, GA, USA

¹¹Eagle Research Centre, Kigali, Rwanda

¹²Division of Epidemiology and Population Studies, Fogarty International Center, National Institutes of Health, Bethesda, MD, USA

¹³Berkeley Air Monitoring Group, Berkeley, CA, USA

¹⁴Division of Pulmonary and Critical Care, School of Medicine and Center for Global Non-Communicable Disease Research and Training, Johns Hopkins University, Baltimore, MD, USA

*Corresponding authors: ajayp@berkeley.edu, 2121 Berkeley Way West, Berkeley, CA 94720; mjohnson@berkeleyair.com, 1935 Addison St, Suite A, Berkeley CA 94704

Keywords

particulate matter, carbon monoxide, children/infant exposure, household energy, biomass, LPG, clean fuel

Synopsis

Household air pollution (HAP) exposure assessment rarely includes estimates for infants and young children. We contrast HAP exposures between children in households with a clean fuel intervention and those using biomass-fueled stoves.

Abstract

Exposure to household air pollution is a leading cause of ill-health globally. The Household Air Pollution Intervention Network (HAPIN) randomized controlled trial evaluated the impact of a free liquefied petroleum gas stove and fuel intervention on birth outcomes and maternal and child health. As part of HAPIN, an extensive exposure assessment was conducted. Here, we report on PM_{2.5} and CO exposures of young children (≤ 15 months old) reconstructed using a Bluetooth-beacon based time-activity monitoring system coupled with microenvironmental pollutant monitors. Median (IQR) exposures to PM_{2.5} were 65.1 (33 – 128.2) $\mu\text{g}/\text{m}^3$ in the control group and 22.9 (17.2 – 35.3) $\mu\text{g}/\text{m}^3$ in the intervention group; for CO, median (IQR) exposures were 1.1 (0.3 – 2.9) ppm and 0.2 (0 – 0.7) ppm for control and intervention group, respectively. Exposure reductions were stable over time and consistent with previous findings for the children's mothers. In the intervention group, 75% of children's reconstructed exposures were below the WHO interim target guideline value of 35 $\mu\text{g}/\text{m}^3$, while 26% were below the standard in the control group. Our findings suggest that an LPG fuel and stove intervention can substantially reduce children's exposure to household air pollution.

Introduction

Between 3 and 4 billion people cook with solid fuels (coal, wood, dung, or crop residues)^{1,2}, resulting in high exposures to household air pollution (HAP), including particulate matter with an aerodynamic diameter of 2.5 μm or less (PM_{2.5}), carbon monoxide (CO), and black carbon (BC), among others. In 2019, 2.3 million deaths were attributed to HAP exposure, approximately 460,000 of which occurred in children under the age of 5.³

HAP-reducing interventions – including improved or advanced biomass stoves and clean fuel stoves – have had varying exposure reduction effectiveness to date.^{4–6} Trials evaluating the impact of interventions on health have often insufficiently measured changes in exposures⁷ or failed to reduce exposure to levels expected to result in improved health.^{8,9} Among those that do measure exposure, many have reported little or no change in exposure, arguably due to mixed use of intervention and traditional stoves or poor-performing interventions that do not reduce exposure in real-world settings.^{10,11}

The multi-country Household Air Pollution Intervention Network (HAPIN) clean stove and fuel randomized controlled trial (RCT) sought to address these shortcomings. First, it provided a liquefied petroleum gas LPG stove and continuous clean fuel supply to pregnant women, with behavioral reinforcement, leading to high fidelity and adherence to the intervention during pregnancy¹² and after childbirth.¹³ Second, we performed extensive personal exposure assessments among participants throughout the trial. Among expectant mothers, we found significantly lower exposures to HAP among the intervention group than in the control group: PM_{2.5} exposures were 66% lower (23.9 vs. 70.7 $\mu\text{g}/\text{m}^3$), BC exposures were 71% lower (2.8 vs. 9.6 $\mu\text{g}/\text{m}^3$), and CO exposures were 83% lower (0.2 vs. 1.1 ppm).¹⁴

Exposures are often measured for primary cooks, typically women; less is known about exposures to infants and young children,¹⁵ despite evidence from the ambient air pollution literature that early-in-life exposure can have respiratory¹⁶ and cardiovascular^{17,18} impacts that may set health trajectories into adulthood. The scarcity of exposure data on children is due partly to challenges of wearability, compliance, and induced behavior change; alternatively, exposures can be reconstructed using microenvironmental measurements coupled with time-activity data either from sensors^{19,20} or self-reported questionnaires.²¹ Here, we report the impact of HAPIN's LPG intervention on estimated PM_{2.5} and CO exposures for HAPIN children using indirect exposure reconstruction methods validated during HAPIN's formative phase.²⁰

Materials and Methods

Study population. The HAPIN RCT of an LPG fuel and stove intervention occurred in Guatemala, India, Peru, and Rwanda. The approach and sites have been described in detail.^{22–24} Briefly, we selected rural sites in each country with low background air pollution concentrations, few additional air pollution sources, and where most households used biomass stoves for cooking.^{14,25,26} The trial assessed intervention health effects among pregnant women ($n \sim 3200$), their resulting newborn children ($n \sim 3200$), and non-pregnant adult women living in the same household ($n \sim 418$), split evenly between intervention and control arms. Primary health outcomes

are birth weight,^{27,28} incidence of severe pediatric pneumonia,²⁹ stunted growth in the children,²² and blood pressure in the non-pregnant adult women.²²

The study protocol has been reviewed and approved by institutional review boards (IRBs) and Ethics Committees at Emory University (00089799), Johns Hopkins University (00007403), Sri Ramachandra Institute of Higher Education and Research (IEC-N1/16/JUL/54/49), the Indian Council of Medical Research – Health Ministry Screening Committee (5/8/4-30/(Env)/Indo-US/2016-NCD-I), Universidad del Valle de Guatemala (146-08-2016), Guatemalan Ministry of Health National Ethics Committee (11-2016), Asociación Benefica PRISMA (CE2981.17), the London School of Hygiene and Tropical Medicine (11664-5), the Rwandan National Ethics Committee (No.357/RNEC/2018), and Washington University in St. Louis (201611159). The study has been registered with ClinicalTrials.gov (Identifier NCT02944682).

Recruitment. Pregnant women were identified and enrolled through partnerships with local clinics and community health workers. Eligible women were aged 18-35 years old at 9 to <20 weeks' gestation, with a viable singleton pregnancy (confirmed by ultrasound); used primarily biomass fuel for cooking; and agreed to participate via informed consent. Exclusion criteria included tobacco use, plans to move outside the study area, and plans to switch to primary use of clean fuels.

Intervention. Participants were randomly assigned (one-to-one) to receive an LPG stove, continuous fuel delivery, and regular behavioral messaging versus continued use of a biomass-burning stove. In India and Peru, stratified randomization was used to ensure balance between distinct geographical regions within each country. No additional stratification was used in Rwanda and Guatemala, where the study areas were deemed homogenous.

The HAPIN intervention was refined during formative research and described in detail previously.²² Stoves and fuel were procured at each IRC based on local cooking practices and equipment and fuel availability. The exact stove deployed varied by country; all stoves had at least two burners and included additional components for preparation of traditional foods (e.g., a flat griddle for cooking tortillas in Guatemala; a roasting device in Rwanda). Intervention households received the stove and a continuous supply of LPG at no cost throughout follow-up. Behavioral support included (i) a pledge by intervention homes to use the LPG stove for all cooking throughout the trial, (ii) safety training, (iii) tailored messaging to encourage exclusive use of LPG and discourage use of traditional stoves, and (iv) behavioral reinforcements upon detection of traditional stove use.

Monitoring plan and microenvironmental PM_{2.5} and CO measurements. We attempted collection of three 24-hour PM_{2.5} and CO measurements in children in the first year of life (<3 months, ~6 months, and ~12 months). We used a validated indirect approach to assess the exposure of children; using standard personal exposure monitors is impractical due to their size and participant preferences.²² This approach pairs microenvironmental pollutant sampling and participant proximity sensing.²³ Details of the indirect exposure assessment process and approach are described below. Microenvironmental PM_{2.5} concentrations were measured using the Enhanced Children's MicroPEM (ECM, RTI International, Durham, NC USA), the same device used for personal PM_{2.5} exposure monitoring in the HAPIN trial. The ECM measures PM_{2.5} concentrations every 10 seconds using a nephelometer and simultaneously collects integrated gravimetric samples on 15 mm polytetrafluoroethylene filters (Measurement Technology Laboratories).²³ Gravimetrically corrected nephelometric PM_{2.5} concentrations are used in infants' indirect PM_{2.5} exposure estimates. Continuous microenvironmental CO concentrations at 1-minute intervals were logged using the Lascar EL-USB-300 (Lascar Electronics), a large pen-sized device with a sensing range between 0 and 300 ppm. Details on instrumentation, sampling strategy, sample analysis, data process, and quality have been described previously.^{14,23}

Indirect exposure measurements. Infants' exposure is estimated using an indirect microenvironmental approach linking objectively determined locations (microenvironments) and assessed PM_{2.5}/CO concentrations in these same areas at the times when the infant was deemed present in the microenvironment with the monitor. We used a Bluetooth[®]-based beacon system for time-location monitoring among infants. The beacon system consists of 1) emitters (Model O, Roximity Inc. Denver, CO, USA or EM Microelectronic, La Tène, Neuchâtel, Switzerland) and 2) loggers (Berkeley Air Monitoring Group, Berkeley, CA, USA) to monitor the location of infants within a home. Monitored microenvironments include the most commonly occupied rooms (i.e., the main living/sleeping areas, the kitchen), and mothers who consented to be a mobile microenvironment and wore an exposure monitor and beacon logger.²³

The emitter (hereafter referred to as a beacon) is a coin-size device that constantly emits Bluetooth signals.²⁰ Infants wore two Beacons each on their clothing during the sampling period. The Beacon logger is a smartphone-sized device that receives and logs Bluetooth signals emitted from the Beacon.²⁰ The beacon logger records the beacon's unique media access control (MAC) address and the received signal strength indicator (RSSI) every 20 seconds. The RSSI value is proportional to the distance between the Beacon and the Beacon logger and is thus used to determine the infant's microenvironmental location.²⁰

In each microenvironment, we co-located a fixed-position logger with a PM_{2.5} and a CO monitor. The time-microenvironment and corresponding area concentrations are assigned at 5-minute intervals as the Beacon logger recorded the strongest average RSSI from the two Beacons worn by infants.²⁰ Reconstructed personal PM_{2.5}/CO exposures for infants were estimated by integrating corresponding microenvironmental concentrations with time spent in the respective locations within the 24-hour monitoring period.

Statistical analysis. All analyses were performed in R (version 4). We calculated descriptive statistics for valid infant indirect PM_{2.5} and CO exposures by study group (control vs. intervention), study visit (<3 months, ~6 months, and ~12 months), and IRC. We evaluated the overall and stove/fuel stratified Spearman's correlations 1) of measurements of the same pollutants collected at each visit and 2) between PM_{2.5} and CO exposure at each measurement point. We assessed the differences in PM_{2.5} and CO exposures between the controls and interventions by study visit (at <3 months, ~6 months, and ~12 months) using non-parametric tests (Wilcoxon Rank Sum, Kruskal-Wallis, and Dunn's tests). Moreover, we evaluated the proportion of children's exposures that were less than or equal to the WHO Annual Interim Target 1 (WHO IT-1) level of 35 µg/m³ for PM_{2.5} and the WHO 24-hour guideline value of 4 mg/m³ (~3.5 ppm) for CO. Additionally, we visually examined the trends in PM_{2.5} and CO exposures by plotting exposures against the age of infants.

Since each child had up to three exposure measurements, we used mixed-effects models to assess the impact of the intervention on personal exposures. We included a random intercept to account for correlations among repeated measurements on the same child. Exposures are natural log-transformed in the models given their right-skewed distribution. As secondary analyses, we also modeled non-transformed exposures to assess the absolute changes in exposures. The model (**Eq. 1**) assesses the difference in mean PM_{2.5}/CO exposures between the control and intervention groups during the first year of life.

$$\log(y_{ij}) = \beta_0 + \beta_1 StudyArm_i + \beta_2 X_1 + \dots + \beta_{11} X_{10} + b_i + \varepsilon_{ij} \quad \text{Eq. 1}$$

where y_{ij} is the PM_{2.5} or CO exposure for child i at visit j (<3 months, ~6 months, or ~12 months visit), $StudyArm_i$ is the child's assigned study group (reference: control), X_1 through X_{10} are indicator variables for the study sites within which the randomization took place (1 in Guatemala, 2 in India, 6 in Peru, and 1 in Rwanda), b_i is the random intercept for child i , ε_{ij} represents the model residual, assumed to be normally distributed. The parameter of interest (Study Arm) was exponentiated, subtracted from one, and multiplied by 100 to obtain the percent reduction in personal exposure due to intervention. In addition, we calculated the intraclass correlation coefficient (ICC) using mixed-effects models with a random intercept for each child to evaluate the within and between individual variability.

Results and Discussion

Household characteristics. 3195 pregnant women randomized to the control (N = 1605) or intervention (N = 1590) groups yielded 3061 live births (control: 1525; intervention: 1536). Among those, 75 exited the study post-birth, and 2986 children remained in the trial (control: 1489; intervention: 1497). **Table 1** summarizes selected baseline household and child characteristics by study group and IRC. The household characteristics of children who remained in the trial were similar between the control and intervention groups at baseline trial-wide and within each IRC. About 80% of households had access to electricity at home, which was also reported as the primary light source across the four IRCs. The primary fuel type varied in each IRC, with wood being predominant in Guatemala and India. Cow dung was reported as the primary fuel in Peru. In Rwanda, most households used wood, but a quarter reported charcoal as the primary household energy source. Overall, 47% of the households owned only one stove (mainly in India and Rwanda), and 48% used two stoves (mainly in Guatemala and Peru). Trial-wide only 10% of the households reported having one or more active smokers at home, mainly from India (34%). The mean (SD) gestational age at delivery was 39.3 (1.5) weeks for the control group and 39.4 (1.5) weeks for the intervention group. 4.8% (N = 71) and 5.1% (N = 77) of the births were classified as preterm (defined as gestational age at birth < 37 weeks) in the control and intervention groups, respectively.

Indirect exposure measurements, data completeness, compliance, and quality assurance and control. HAPIN field staff made 7227 exposure monitoring visits for 2986 children during their first year of life. 61% and 63% of the children had at least one valid indirect PM_{2.5} and CO exposure sample, respectively. The proportion of (a) enrolled children with valid indirect measurements and (b) exposure visits with valid indirect measurements vary by study visit and IRC (**Table S1-S4**). Generally, the percentage of valid samples went down over time; the <3 month visit had the most valid samples, and the ~12 month visit had the least. The moderate to low percentage of valid samples is partially due to increased equipment failure as time passed, field measurements interrupted by the COVID-19 pandemic lockdown, and the challenge and complexity of successfully merging multiple real-time data sources in the indirect microenvironmental approach.

Child exposure summary. 24-hour child indirect exposures to PM_{2.5} and CO are summarized by study arm and visit in **Table 2** and in **Figure 1**. Exposure visits occurred as planned, with the first visit occurring on average 3.2 (SD 0.43) months after birth, the second visit occurring on average 6.3 (SD 0.48) months after birth, and the final visit occurring 12.1 (0.49) months after birth (**SI Figure S1**).

Trial-wide and within IRCs, we observed stable reductions in PM_{2.5} between post-birth measurement rounds. The overall median (IQR) child PM_{2.5} and CO exposures are 65.1 (33.0 — 128.2) $\mu\text{g}/\text{m}^3$ and 1.1 (0.3 — 2.9) ppm for the control group, and 22.9 (17.2 — 35.3) $\mu\text{g}/\text{m}^3$ and 0.2 (0.0 — 0.7) ppm for the intervention group. Median child exposures to PM_{2.5} in the intervention arm were 65% lower than in the control arm during the <3 months visit (67 vs. 23 $\mu\text{g}/\text{m}^3$), 62% lower at the ~6 months visit (60 vs. 23 $\mu\text{g}/\text{m}^3$), and 69% lower at the ~12 months visit (72 vs. 22 $\mu\text{g}/\text{m}^3$). CO exposures were similarly reduced: 85% at <3 months (1.1 vs. 0.2 ppm), 82% at ~6 months (1.1 vs. 0.2 ppm), and 88% at ~12 months (1.0 vs 0.1 ppm). Across all rounds, 26% of control samples and 75% of intervention samples were below the WHO-IT1 target guideline value of 35 $\mu\text{g}/\text{m}^3$. Similarly, 95% of intervention samples and 79% of control samples were below the WHO annual guideline value for CO (3.5 ppm). Both descriptive statistics of PM_{2.5} and CO exposures and the proportion of measurements below the WHO guidelines were similar across the three post-birth visits.

Exposures over time. We plotted children's exposures to PM_{2.5} by age (the number of days between the exposure measurement date and the child's birthday, **Figure 2**). We observe consistent and distinct separation of exposures between the control and intervention children in the first year of life. Control and intervention samples were significantly different at each round for each pollutant ($p < 0.001$). For control households, there was no significant difference between PM_{2.5} or CO exposures by study visits. Exposures were 109 (SD 125), 112 (SD 147), and 124 (SD 162) for <3 months, ~6 months, and ~12 months visits. Similar trends were

observed for CO: 2.4 (SD 4.0), 2.6 (SD 4.6), and 2.7 (SD 5.1) ppm at < 3 months, ~6 months, and ~ 12 months. There were no significant differences between PM_{2.5} or CO exposures by study round for intervention households. Exposures were 39 (SD 120), 35 (SD 69), and 39 (SD 88) for visits at <3 months, ~6 months, and ~12 months. Similar trends were observed for CO: 0.8 (SD 2.3), 0.7 (SD 1.5), and 0.9 (SD 2.6) ppm at <3 months, ~6 months, and ~12 months.

Correlations between pollutants and between study rounds. Correlations between pollutants were moderate for the control arm (Spearman's ρ 0.45) and poor for the intervention arm (Spearman's ρ 0.08). Overall correlations between study rounds (depicted in **SI Figure S2**) were weak for CO (Spearman's ρ 0.37) and were moderate for PM (Spearman's ρ 0.58); for both pollutants, they were stronger in the control arm than in the intervention arm.

Modeling the effect of the LPG stove and fuel intervention on personal exposures. Modeled impacts of the HAPIN LPG fuel and stove intervention on children's exposure indicated significant reductions for PM_{2.5} and CO (**Figure 3**) of 62% (95% CI 59, 64) and 80 (95% CI 77, 83), respectively. In models with untransformed outcomes, these percent reductions translate to predicted absolute reductions of 79.9 $\mu\text{g}/\text{m}^3$ (95% CI 69.7, 90.1) and 1.8 ppm (95% CI 1.5, 2.1) for PM_{2.5} and CO, respectively.

Discussion

Our findings add to evidence of the effectiveness of a well-used and highly adhered to LPG intervention for lowering exposures to household air pollution, measured here as PM_{2.5} and CO.^{12,13} Our findings are consistent with previous work done as part of the HAPIN trial to characterize exposures during pregnancy; among the same households, we find remarkable consistency between exposure reductions during pregnancy and for young children, as reported here. As we reported previously for pregnant women, these exposures are, to the best of our knowledge, among the most substantial for a household energy intervention to date. Our findings of reduced exposures are consistent and stable across our four low- and middle-income settings.

Comparisons with measurements made during HAPIN are especially relevant, as they provide evidence of stable reductions throughout different phases and measurement regimens of the trial. Prior to the birth of the child, maternal exposure to HAP was measured once at baseline, prior to randomization, and at most twice during pregnancy. Findings from those initial measurements of the intervention's effectiveness indicated similar reductions in PM_{2.5} and CO exposures (61% and 81%, respectively, as compared to 62% and 80% in the current study, **Figure 4**). Taken in total, these findings suggest the HAPIN intervention reduced exposures in a significant and consistent pattern throughout pregnancy and the child's first year of life.

Several studies have measured personal exposure to HAP among children under five. Early studies in Guatemala,^{30,31} Gambia,³²⁻³⁴ and South Africa³⁵ measured CO using passive diffusion tubes attached to children's clothing. Recent studies used personal monitors to measure children's exposures to PM_{2.5} in Malawi,³⁶ the United States,³⁷ Rwanda,³⁸ Ghana,³⁹ Vietnam,⁴⁰ and CO in Ghana,^{8,17} Peru,⁴¹ Rwanda,⁴² or both Uganda and Ethiopia.⁴³ Among identified studies, four measured PM_{2.5}/CO exposures using personal monitors in children under 1-year old. In these studies, sampling instruments were all attached to the customized clothing of the caregiver.^{8,17,36,41,42} Several direct measurements were conducted among children between ages 1 and 5 with lightweight personal monitors in a backpack/shoulder bag or a vest pocket.^{37,38,40} Studies also used microenvironment measurements plus time-activity logs and statistical modeling to estimate the exposures of children.^{32,39,43}

Despite these different approaches, reported values are uniformly high among LMIC households using solid fuels. Kirby et al. (2019) reported high child PM_{2.5} exposure in Rwanda, where the median (IQR) exposure was 154 (85–267) $\mu\text{g}/\text{m}^3$ in the intervention households using an improved biomass stove and 161 (91–285) $\mu\text{g}/\text{m}^3$ in control households.³⁸ In Malawi, the geometric mean (GM) (95% CI) of PM_{2.5} exposure among children at six months was 53.9 (49.4 - 58.7) in a cleaner-burning biomass-fueled cookstove intervention group and 49.0 (45.0 - 53.3) in the control group using open fires.³⁶ Similarly, the GM (GSD) of young infants'

exposure to PM_{2.5} in households using biomass was 80.2 (1.34) and 97.0 (1.89) in Uganda and Ethiopia, respectively.⁴³ Clean fuels resulted in lower exposures; in Vietnam, the reported mean (SD) child exposure was 36 (24) µg/m³ in households using electricity for cooking and 44 (38) µg/m³ in homes using LPG.⁴⁰

Personal CO exposure of children under five old followed a similar pattern. The 48-hour median (IQR) personal exposure observed in Ghana was 1) 0.48 (0.17–1.23) ppm in traditional cookstove households, 2) 0.51 (0.17–1.10) ppm in improved biomass cookstove households, and 3) 0.39 (0.12–0.94) ppm in LPG stove households.⁸ In Rwanda, the estimated child CO exposure from burning solid fuels was much higher, with a 24-hour mean of 6.8 ppm.⁴² The reported 24-hour GM was 1.4 in Peru,⁴¹ 0.64 in Uganda, and 2.4 in Ethiopia.⁴³

Our study has a number of strengths. It contributes to this growing body of evidence of HAP exposures among young children. It is among a small number that has used sensor-based measurements to assess microenvironmental locations and coupled this time-activity data with microenvironmental PM_{2.5} and CO measures, enabling exposure reconstruction. We also acknowledge a number of limitations. While we highlight the reduced exposures for both expecting mothers and their young children resulting from the HAPIN intervention, we acknowledge fairly large, unexplained residual exposures. Future work should focus on identifying the drivers of this residual exposure, which may include outdoor exposures from trash burning, from unmonitored biomass stoves, or from other household energy sources (animal food preparation, heating water for bathing, etc). Second, we acknowledge the unique circumstances of the trial, in which LPG was supplied for free, and during which households were provided behavioral nudges to continue its use, neither of which will continue post-trial. Third, despite the scale of the exposure assessment exercise reported here, we only reconstructed periodic snapshots of exposure that may not represent the ‘true’ participant experience. However, we note the remarkable stability of both the control arm and intervention exposures post-randomization (**Figure 4**) for mothers and children. Next, microenvironmental reconstructions required the use of numerous data streams linked by unique beacons, beacon loggers, and household IDs. Loss of any single data stream – from data processing errors, file naming errors, or mis-entry during digital record taking while deploying samples – resulted in lost samples. Future work will describe efforts to model both mother and children’s exposure using limited subsets of the data collected during HAPIN and leveraging repeat measurements in the same household, where available. Finally, we acknowledge that the study children’s behavioral patterns at the three measurement timepoints likely are not representative of each other nor of later periods of childhood and adolescence. Nonetheless, the findings provide evidence (and rationale) for these types of measurements and for further investigation of exposures during critical periods of child development.

While the HAPIN study is an efficacy trial under which LPG was provided continuously and for free, our findings, coupled with previous findings for pregnant women¹⁴ and forthcoming findings for non-pregnant adult women from the same households (*in preparation*), provide evidence that adoption and sustained, near-exclusive use of clean fuels can reduce exposure to household air pollution for multiple household members, including vulnerable young children. Given the potentially deleterious impacts of exposure across the lifespan, additional measurements are warranted for children and other household members whose experience of pollution is not currently well characterized.

Acknowledgements

The HAPIN trial is funded by the U.S. National Institutes of Health (cooperative agreement [1UM1HL134590](#)) in collaboration with the Bill & Melinda Gates Foundation [OPP1131279].

The investigators would like to thank the members of the advisory committee - Patrick Breyse, Donna Spiegelman, and Joel Kaufman - for their valuable insight and guidance throughout the implementation of the trial. We also wish to acknowledge all research staff and study participants for their dedication to and participation in this important trial.

A multidisciplinary, independent Data and Safety Monitoring Board (DSMB) appointed by the National Heart, Lung, and Blood Institute (NHLBI) monitors the quality of the data and protects the safety of patients enrolled in the HAPIN trial. NHLBI DSMB: Nancy R. Cook, Stephen Hecht, Catherine Karr (Chair), Joseph Millum, Nalini Sathikumar, Paul K. Whelton, and Gail Weinmann and Thomas Croxton (Executive

Secretaries). Program Coordination: Gail Rodgers, Bill & Melinda Gates Foundation; Claudia L. Thompson, National Institute of Environmental Health Sciences; Mark J. Parascandola, National Cancer Institute; Marion Koso-Thomas, Eunice Kennedy Shriver National Institute of Child Health and Human Development; Joshua P. Rosenthal, Fogarty International Center; Concepcion R. Nierras, NIH Office of Strategic Coordination Common Fund; Katherine Kavounis, Dong- Yun Kim, Antonello Punturieri, and Barry S. Schmetter, NHLBI.

The findings and conclusions in this report are those of the authors and do not necessarily represent the official position of the US National Institutes of Health or Department of Health and Human Services.

REFERENCES

- (1) Health Effects Institute. *The State of Global Air 2020 (Special Report)*; Boston, MA-Health Effects Institute, 2020.
- (2) Stoner, O.; Lewis, J.; Martínez, I. L.; Gumy, S.; Economou, T.; Adair-Rohani, H. Household Cooking Fuel Estimates at Global and Country Level for 1990 to 2030. *Nature Communications* **2021**, *12* (1), 5793. <https://doi.org/10.1038/s41467-021-26036-x>.
- (3) Murray, C. J. L.; Aravkin, A. Y.; Zheng, P.; Abbafati, C.; Abbas, K. M.; Abbasi-Kangevari, M.; Abd-Allah, F.; Abdelalim, A.; Abdollahi, M.; Abdollahpour, I.; Abegaz, K. H.; Abolhassani, H.; Aboyans, V.; Abreu, L. G.; Abrigo, M. R. M.; Abualhasan, A.; Abu-Raddad, L. J.; Abushouk, A. I.; Adabi, M.; Adekanmbi, V.; Adeoye, A. M.; Adetokunboh, O. O.; Adham, D.; Advani, S. M.; Agarwal, G.; Aghamir, S. M. K.; Agrawal, A.; Ahmad, T.; Ahmadi, K.; Ahmadi, M.; Ahmadi, H.; Ahmed, M. B.; Akalu, T. Y.; Akinyemi, R. O.; Akinyemiju, T.; Akombi, B.; Akunna, C. J.; Alahdab, F.; Al-Aly, Z.; Alam, K.; Alam, S.; Alam, T.; Alanezi, F. M.; Alanzi, T. M.; Alemu, B. wassihun; Alhabib, K. F.; Ali, M.; Ali, S.; Alicandro, G.; Alinia, C.; Alipour, V.; Alizade, H.; Aljunid, S. M.; Alla, F.; Allebeck, P.; Almasi-Hashiani, A.; Al-Mekhlafi, H. M.; Alonso, J.; Altirkawi, K. A.; Amini-Rarani, M.; Amiri, F.; Amugsi, D. A.; Ancuceanu, R.; Anderlini, D.; Anderson, J. A.; Andrei, C. L.; Andrei, T.; Angus, C.; Anjomshoa, M.; Ansari, F.; Ansari-Moghaddam, A.; Antonazzo, I. C.; Antonio, C. A. T.; Antony, C. M.; Antriyandarti, E.; Anvari, D.; Anwer, R.; Appiah, S. C. Y.; Arabloo, J.; Arab-Zozani, M.; Ariani, F.; Armoon, B.; Ärnlöv, J.; Arzani, A.; Asadi-Aliabadi, M.; Asadi-Pooya, A. A.; Ashbaugh, C.; Assmus, M.; Atafar, Z.; Atnafu, D. D.; Atout, M. M. W.; Ausloos, F.; Ausloos, M.; Quintanilla, B. P. A.; Ayano, G.; Ayanore, M. A.; Azari, S.; Azarian, G.; Azene, Z. N.; Badawi, A.; Badiye, A. D.; Bahrami, M. A.; Bakhshaei, M. H.; Bakhtiari, A.; Bakkannavar, S. M.; Baldasseroni, A.; Ball, K.; Ballew, S. H.; Balzi, D.; Banach, M.; Banerjee, S. K.; Bante, A. B.; Baraki, A. G.; Barker-Collo, S. L.; Bärnighausen, T. W.; Barrero, L. H.; Barthelemy, C. M.; Barua, L.; Basu, S.; Baune, B. T.; Bayati, M.; Becker, J. S.; Bedi, N.; Beghi, E.; Béjot, Y.; Bell, M. L.; Bennitt, F. B.; Bensenor, I. M.; Berhe, K.; Berman, A. E.; Bhagavathula, A. S.; Bhageerathy, R.; Bhala, N.; Bhandari, D.; Bhattacharyya, K.; Bhutta, Z. A.; Bijani, A.; Bikbov, B.; Sayeed, M. S. B.; Biondi, A.; Birihaane, B. M.; Bisignano, C.; Biswas, R. K.; Bitew, H.; Bohlouli, S.; Bohluli, M.; Boon-Dooley, A. S.; Borges, G.; Borzi, A. M.; Borzouei, S.; Bosetti, C.; Boufous, S.; Braithwaite, D.; Breitborde, N. J. K.; Breitner, S.; Brenner, H.; Briant, P. S.; Briko, A. N.; Briko, N. I.; Britton, G. B.; Bryazka, D.; Bumgarner, B. R.; Burkart, K.; Burnett, R. T.; Nagaraja, S. B.; Butt, Z. A.; Santos, F. L. C. dos; Cahill, L. E.; Cámara, L. L. A.; Campos-Nonato, I. R.; Cárdenas, R.; Carreras, G.; Carrero, J. J.; Carvalho, F.; Castaldelli-Maia, J. M.; Castañeda-Orjuela, C. A.; Castelpietra, G.; Castro, F.; Causey, K.; Cederroth, C. R.; Cercy, K. M.; Cerin, E.; Chandan, J. S.; Chang, K.-L.; Charlson, F. J.; Chattu, V. K.; Chaturvedi, S.; Cherbuin, N.; Chimed-Ochir, O.; Cho, D. Y.; Choi, J.-Y. J.; Christensen, H.; Chu, D.-T.; Chung, M. T.; Chung, S.-C.; Cicuttini, F. M.; Ciobanu, L. G.; Cirillo, M.; Classen, T. K. D.; Cohen, A. J.; Compton, K.; Cooper, O. R.; Costa, V. M.; Cousin, E.; Cowden, R. G.; Cross, D. H.; Cruz, J. A.; Dahlawi, S. M. A.; Damasceno, A. A. M.; Damiani, G.; Dandona, L.; Dandona, R.; Dangel, W. J.; Danielsson, A.-K.; Dargan, P. I.; Darwesh, A. M.; Daryani, A.; Das, J. K.; Gupta, R. D.; Neves, J. das; Dávila-Cervantes, C. A.; Davitoiu, D. V.; Leo, D. D.; Degenhardt, L.; DeLang, M.; Dellavalle, R. P.; Demeke, F. M.; Demoz, G. T.; Demsie, D. G.; Denova-Gutiérrez, E.; Derveniz, N.; Dhungana, G. P.; Dianatinasab, M.; Silva, D. D. da; Diaz, D.; Forooshani, Z. S. D.; Djalalinia, S.; Do, H. T.; Dokova, K.; Dorostkar, F.; Doshmangir, L.; Driscoll, T. R.; Duncan, B. B.; Duraes, A. R.; Eagan, A. W.; Edvardsson, D.; Nahas, N. E.; Sayed, I. E.; Tantawi, M. E.; Elbarazi, I.; Elgendy, I. Y.; El-Jaafary, S. I.; Elyazar, I. R.; Emmons-Bell, S.; Erskine, H. E.; Eskandarieh, S.; Esmailnejad, S.; Esteghamati, A.; Estep, K.; Etemadi, A.; Etillo, A. E.; Fanzo, J.; Farahmand, M.; Fareed, M.; Faridnia, R.; Farioli, A.; Faro, A.; Faruque, M.; Farzadfar, F.; Fattahi, N.; Fazlzadeh, M.; Feigin, V. L.; Feldman, R.; Fereshtehnejad, S.-M.; Fernandes, E.; Ferrara, G.; Ferrari, A. J.; Ferreira, M. L.; Filip, I.; Fischer, F.; Fisher, J. L.; Flor, L. S.; Foigt, N. A.; Folyan, M. O.; Fomenkov, A. A.; Force, L. M.; Foroutan, M.; Franklin, R. C.; Freitas, M.; Fu, W.; Fukumoto, T.; Furtado, J. M.; Gad, M. M.; Gakidou, E.; Gallus, S.; Garcia-Basteiro, A. L.; Gardner, W. M.; Geberemariam, B. S.; Gebreslassie, A. A. A.; Geremew, A.; Hayoon, A. G.; Gething, P. W.; Ghadimi, M.; Ghadiri, K.; Ghaffarifar, F.; Ghafourifard, M.; Ghamari, F.; Ghashghaee, A.; Ghiasvand, H.; Ghith, N.; Gholamian, A.; Ghosh, R.; Gill, P. S.; Ginindza, T. G. G.; Giussani, G.; Gnedovskaya, E. V.; Goharinezhad, S.; Gopalani, S. V.; Gorini, G.; Goudarzi, H.; Goulart, A. C.; Greaves, F.; Grivna, M.; Grosso, G.; Gubari, M. I. M.; Gughani, H. C.; Guimarães, R. A.; Guled, R. A.; Guo, G.; Guo, Y.; Gupta, R.; Gupta, T.; Haddock, B.; Hafezi-Nejad, N.; Hafiz, A.; Haj-Mirzaian, A.; Haj-Mirzaian, A.; Hall, B. J.; Halvaei, I.; Hamadeh, R. R.; Hamidi, S.; Hammer, M. S.; Hankey, G. J.; Haririan, H.; Haro, J. M.; Hasaballah, A. I.;

Hasan, M. M.; Hasanpoor, E.; Hashi, A.; Hassanipour, S.; Hassankhani, H.; Havmoeller, R. J.; Hay, S. I.; Hayat, K.; Heidari, G.; Heidari-Soureshjani, R.; Henrikson, H. J.; Herbert, M. E.; Herteliu, C.; Heydarpour, F.; Hird, T. R.; Hoek, H. W.; Holla, R.; Hoogar, P.; Hosgood, H. D.; Hossain, N.; Hosseini, M.; Hosseinzadeh, M.; Hostiuc, M.; Hostiuc, S.; Househ, M.; Hsairi, M.; Hsieh, V. C.; Hu, G.; Hu, K.; Huda, T. M.; Humayun, A.; Huynh, C. K.; Hwang, B.-F.; Iannucci, V. C.; Ibitoye, S. E.; Ikeda, N.; Ikuta, K. S.; Ilesanmi, O. S.; Ilic, I. M.; Ilic, M. D.; Inbaraj, L. R.; Ippolito, H.; Iqbal, U.; Irvani, S. S. N.; Irvine, C. M. S.; Islam, M. M.; Islam, S. M. S.; Iso, H.; Ivers, R. Q.; Iwu, C. C. D.; Iwu, C. J.; Iyamu, I. O.; Jaafari, J.; Jacobsen, K. H.; Jafari, H.; Jafarinaia, M.; Jahani, M. A.; Jakovljevic, M.; Jalilian, F.; James, S. L.; Janjani, H.; Javaheri, T.; Javidnia, J.; Jeemon, P.; Jenabi, E.; Jha, R. P.; Jha, V.; Ji, J. S.; Johansson, L.; John, O.; John-Akinola, Y. O.; Johnson, C. O.; Jonas, J. B.; Joukar, F.; Jozwiak, J. J.; Jürisson, M.; Kabir, A.; Kabir, Z.; Kalani, H.; Kalani, R.; Kalankesh, L. R.; Kalhor, R.; Kanchan, T.; Kapoor, N.; Matin, B. K.; Karch, A.; Karim, M. A.; Kassa, G. M.; Katikireddi, S. V.; Kayode, G. A.; Karyani, A. K.; Keiyoro, P. N.; Keller, C.; Kemmer, L.; Kendrick, P. J.; Khalid, N.; Khammarnia, M.; Khan, E. A.; Khan, M.; Khatab, K.; Khater, M. M.; Khatib, M. N.; Khayamzadeh, M.; Khazaei, S.; Kieling, C.; Kim, Y. J.; Kimokoti, R. W.; Kisa, A.; Kisa, S.; Kivimäki, M.; Knibbs, L. D.; Knudsen, A. K. S.; Kocarnik, J. M.; Kochhar, S.; Kopec, J. A.; Korshunov, V. A.; Koul, P. A.; Koyanagi, A.; Kraemer, M. U. G.; Krishan, K.; Krohn, K. J.; Kromhout, H.; Defo, B. K.; Kumar, G. A.; Kumar, V.; Kurmi, O. P.; Kusuma, D.; Vecchia, C. L.; Lacey, B.; Lal, D. K.; Laloo, R.; Lallukka, T.; Lami, F. H.; Landires, I.; Lang, J. J.; Langan, S. M.; Larsson, A. O.; Lasrado, S.; Lauriola, P.; Lazarus, J. V.; Lee, P. H.; Lee, S. W. H.; LeGrand, K. E.; Leigh, J.; Leonardi, M.; Lescinsky, H.; Leung, J.; Levi, M.; Li, S.; Lim, L.-L.; Linn, S.; Liu, S.; Liu, S.; Liu, Y.; Lo, J.; Lopez, A. D.; Lopez, J. C. F.; Lopukhov, P. D.; Lorkowski, S.; Lotufo, P. A.; Lu, A.; Lugo, A.; Maddison, E. R.; Mahasha, P. W.; Mahdavi, M. M.; Mahmoudi, M.; Majeed, A.; Maleki, A.; Maleki, S.; Malekzadeh, R.; Malta, D. C.; Mamun, A. A.; Manda, A. L.; Manguerra, H.; Mansour-Ghanaei, F.; Mansouri, B.; Mansournia, M. A.; Herrera, A. M. M.; Maravilla, J. C.; Marks, A.; Martin, R. V.; Martini, S.; Martins-Melo, F. R.; Masaka, A.; Masoumi, S. Z.; Mathur, M. R.; Matsushita, K.; Maulik, P. K.; McAlinden, C.; McGrath, J. J.; McKee, M.; Mehndiratta, M. M.; Mehri, F.; Mehta, K. M.; Memish, Z. A.; Mendoza, W.; Menezes, R. G.; Mengesha, E. W.; Mereke, A.; Mereta, S. T.; Meretoja, A.; Meretoja, T. J.; Mestrovic, T.; Miazgowski, B.; Miazgowski, T.; Michalek, I. M.; Miller, T. R.; Mills, E. J.; Mini, G. K.; Miri, M.; Mirica, A.; Mirzakhimov, E. M.; Mirzaei, H.; Mirzaei, M.; Mirzaei, R.; Mirzaei-Alavijeh, M.; Misganaw, A. T.; Mithra, P.; Moazen, B.; Mohammad, D. K.; Mohammad, Y.; Mezerji, N. M. G.; Mohammadian-Hafshejani, A.; Mohammadifard, N.; Mohammadpourhodki, R.; Mohammed, A. S.; Mohammed, H.; Mohammed, J. A.; Mohammed, S.; Mokdad, A. H.; Molokhia, M.; Monasta, L.; Mooney, M. D.; Moradi, G.; Moradi, M.; Moradi-Lakeh, M.; Moradzadeh, R.; Moraga, P.; Morawska, L.; Morgado-da-Costa, J.; Morrison, S. D.; Mosapour, A.; Mosser, J. F.; Mouodi, S.; Mousavi, S. M.; Khaneghah, A. M.; Mueller, U. O.; Mukhopadhyay, S.; Mullany, E. C.; Musa, K. I.; Muthupandian, S.; Nabhan, A. F.; Naderi, M.; Nagarajan, A. J.; Nagel, G.; Naghavi, M.; Naghshtabrizi, B.; Naimzada, M. D.; Najafi, F.; Nangia, V.; Nansseu, J. R.; Naserbakht, M.; Nayak, V. C.; Negoii, I.; Ngunjiri, J. W.; Nguyen, C. T.; Nguyen, H. L. T.; Nguyen, M.; Nigatu, Y. T.; Nikbakhsh, R.; Nixon, M. R.; Nnaji, C. A.; Nomura, S.; Norrving, B.; Noubiap, J. J.; Nowak, C.; Nunez-Samudio, V.; Ofoju, A.; Oancea, B.; Odell, C. M.; Ogbo, F. A.; Oh, I.-H.; Okunga, E. W.; Oladnabi, M.; Olagunju, A. T.; Olusanya, B. O.; Olusanya, J. O.; Omer, M. O.; Ong, K. L.; Onwujekwe, O. E.; Orpana, H. M.; Ortiz, A.; Osarenotor, O.; Osei, F. B.; Ostroff, S. M.; Otstavnov, N.; Otstavnov, S. S.; Øverland, S.; Owolabi, M. O.; A, M. P.; Padubidri, J. R.; Palladino, R.; Panda-Jonas, S.; Pandey, A.; Parry, C. D. H.; Pasovic, M.; Pasupula, D. K.; Patel, S. K.; Pathak, M.; Patten, S. B.; Patton, G. C.; Toroudi, H. P.; Peden, A. E.; Pennini, A.; Pepito, V. C. F.; Peprah, E. K.; Pereira, D. M.; Pesudovs, K.; Pham, H. Q.; Phillips, M. R.; Piccinelli, C.; Pilz, T. M.; Piradov, M. A.; Pirsahab, M.; Plass, D.; Polinder, S.; Polkinghorne, K. R.; Pond, C. D.; Postma, M. J.; Pourjafar, H.; Pourmalek, F.; Poznańska, A.; Prada, S. I.; Prakash, V.; Pribadi, D. R. A.; Pupillo, E.; Syed, Z. Q.; Rabiee, M.; Rabiee, N.; Radfar, A.; Rafiee, A.; Raggi, A.; Rahman, M. A.; Rajabpour-Sanati, A.; Rajati, F.; Rakovac, I.; Ram, P.; Ramezanzadeh, K.; Ranabhat, C. L.; Rao, P. C.; Rao, S. J.; Rashedi, V.; Rathi, P.; Rawaf, D. L.; Rawaf, S.; Rawal, L.; Rawassizadeh, R.; Rawat, R.; Razo, C.; Redford, S. B.; Reiner, R. C.; Reitsma, M. B.; Remuzzi, G.; Renjith, V.; Renzaho, A. M. N.; Resnikoff, S.; Rezaei, N.; Rezaei, N.; Rezapour, A.; Rhinehart, P.-A.; Riahi, S. M.; Ribeiro, D. C.; Ribeiro, D.; Rickard, J.; Rivera, J. A.; Roberts, N. L. S.; Rodríguez-Ramírez, S.; Roeber, L.; Ronfani, L.; Room, R.; Roshandel, G.; Roth, G. A.; Rothenbacher, D.; Rubagotti, E.; Rweggerera, G. M.; Sabour, S.; Sachdev, P. S.; Saddik, B.; Sadeghi, E.; Sadeghi, M.; Saeedi, R.; Moghaddam, S. S.; Safari, Y.; Safi, S.; Safiri, S.; Sagar, R.; Sahebkar, A.; Sajadi, S. M.; Salam, N.; Salamati, P.; Salem, H.; Salem, M. R. R.; Salimzadeh, H.; Salman, O. M.; Salomon, J. A.; Samad, Z.; Kafil, H. S.; Sambala, E. Z.; Samy, A. M.; Sanabria, J.; Sánchez-Pimienta, T.

- G.; Santomauro, D. F.; Santos, I. S.; Santos, J. V.; Santric-Milicevic, M. M.; Saraswathy, S. Y. I.; Sarmiento-Suárez, R.; Sarrafzadegan, N.; Sartorius, B.; Sarveazad, A.; Sathian, B.; Sathish, T.; Sattin, D.; Saxena, S.; Schaeffer, L. E.; Schiavolin, S.; Schlaich, M. P.; Schmidt, M. I.; Schutte, A. E.; Schwebel, D. C.; Schwendicke, F.; Senbeta, A. M.; Senthilkumaran, S.; Sepanlou, S. G.; Serdar, B.; Serre, M. L.; Shadid, J.; Shafaat, O.; Shahabi, S.; Shaheen, A. A.; Shaikh, M. A.; Shalash, A. S.; Shams-Beyranvand, M.; Shamsizadeh, M.; Sharafi, K.; Sheikh, A.; Sheikhtaheri, A.; Shibuya, K.; Shield, K. D.; Shigematsu, M.; Shin, J. I.; Shin, M.-J.; Shiri, R.; Shirkoobi, R.; Shuval, K.; Siabani, S.; Sierpinski, R.; Sigfusdottir, I. D.; Sigurvinsdottir, R.; Silva, J. P.; Simpson, K. E.; Singh, J. A.; Singh, P.; Skiadaresi, E.; Skou, S. T. S.; Skryabin, V. Y.; Smith, E. U. R.; Soheili, A.; Soltani, S.; Soofi, M.; Sorensen, R. J. D.; Soriano, J. B.; Sorrie, M. B.; Soshnikov, S.; Soyiri, I. N.; Spencer, C. N.; Spotin, A.; Sreeramareddy, C. T.; Srinivasan, V.; Stanaway, J. D.; Stein, C.; Stein, D. J.; Steiner, C.; Stockfelt, L.; Stokes, M. A.; Straif, K.; Stubbs, J. L.; Sufiyan, M. B.; Suleria, H. A. R.; Abdulkader, R. S.; Sulo, G.; Sultan, I.; Szumowski, Ł.; Tabarés-Seisdedos, R.; Tabb, K. M.; Tabuchi, T.; Taherkhani, A.; Tajdini, M.; Takahashi, K.; Takala, J. S.; Tamiru, A. T.; Taveira, N.; Tehrani-Banihashemi, A.; Temsah, M.-H.; Tesema, G. A.; Tessema, Z. T.; Thurston, G. D.; Titova, M. V.; Tohidinik, H. R.; Tonelli, M.; Topor-Madry, R.; Topouzis, F.; Torre, A. E.; Touvier, M.; Tovani-Palone, M. R. R.; Tran, B. X.; Travillian, R.; Tsatsakis, A.; Car, L. T.; Tyrovolas, S.; Uddin, R.; Umeokonkwo, C. D.; Unnikrishnan, B.; Upadhyay, E.; Vacante, M.; Valdez, P. R.; Donkelaar, A. van; Vasankari, T. J.; Vasseghian, Y.; Veisani, Y.; Venketasubramanian, N.; Violante, F. S.; Vlassov, V.; Vollset, S. E.; Vos, T.; Vukovic, R.; Waheed, Y.; Wallin, M. T.; Wang, Y.; Wang, Y.-P.; Watson, A.; Wei, J.; Wei, M. Y. W.; Weintraub, R. G.; Weiss, J.; Werdecker, A.; West, J. J.; Westerman, R.; Whisnant, J. L.; Whiteford, H. A.; Wiens, K. E.; Wolfe, C. D. A.; Wozniak, S. S.; Wu, A.-M.; Wu, J.; Hanson, S. W.; Xu, G.; Xu, R.; Yadgir, S.; Jabbari, S. H. Y.; Yamagishi, K.; Yaminfirooz, M.; Yano, Y.; Yaya, S.; Yazdi-Feyzabadi, V.; Yeheyis, T. Y.; Yilgwan, C. S.; Yilma, M. T.; Yip, P.; Yonemoto, N.; Younis, M. Z.; Younker, T. P.; Yousefi, B.; Yousefi, Z.; Yousefinezhadi, T.; Yousuf, A. Y.; Yu, C.; Yusefzadeh, H.; Moghadam, T. Z.; Zamani, M.; Zamanian, M.; Zandian, H.; Zastrozhin, M. S.; Zhang, Y.; Zhang, Z.-J.; Zhao, J. T.; Zhao, X.-J. G.; Zhao, Y.; Zhou, M.; Ziapour, A.; Zimsen, S. R. M.; Brauer, M.; Afshin, A.; Lim, S. S. Global Burden of 87 Risk Factors in 204 Countries and Territories, 1990–2019: A Systematic Analysis for the Global Burden of Disease Study 2019. *The Lancet* **2020**, 396 (10258), 1223–1249. [https://doi.org/10.1016/S0140-6736\(20\)30752-2](https://doi.org/10.1016/S0140-6736(20)30752-2).
- (4) Quansah, R.; Semple, S.; Ochieng, C. A.; Juvekar, S.; Armah, F. A.; Luginaah, I.; Emina, J. Effectiveness of Interventions to Reduce Household Air Pollution and/or Improve Health in Homes Using Solid Fuel in Low-and-Middle Income Countries: A Systematic Review and Meta-Analysis. *Environment International* **2017**, 103, 73–90. <https://doi.org/10.1016/j.envint.2017.03.010>.
- (5) Pope, D.; Bruce, N.; Dherani, M.; Jagoe, K.; Rehfuess, E. Real-Life Effectiveness of ‘Improved’ Stoves and Clean Fuels in Reducing PM_{2.5} and CO: Systematic Review and Meta-Analysis. *Environment International* **2017**, 101, 7–18. <https://doi.org/10.1016/j.envint.2017.01.012>.
- (6) Woolley, K.; Bartington, S. E.; Pope, F. D.; Price, M. J.; Thomas, G. N.; Kabera, T. Biomass Cooking Carbon Monoxide Levels in Commercial Canteens in Kigali, Rwanda. *Archives of Environmental & Occupational Health* **2020**, 0 (0), 1–11. <https://doi.org/10.1080/19338244.2020.1761279>.
- (7) Bartington, S. E.; Bakolis, I.; Devakumar, D.; Kurmi, O. P.; Gulliver, J.; Chaube, G.; Manandhar, D. S.; Saville, N. M.; Costello, A.; Osrin, D.; Hansell, A. L.; Ayres, J. G. Patterns of Domestic Exposure to Carbon Monoxide and Particulate Matter in Households Using Biomass Fuel in Janakpur, Nepal. *Environ Pollut* **2017**, 220 (Pt A), 38–45. <https://doi.org/10.1016/j.envpol.2016.08.074>.
- (8) Chillrud, S. N.; Ae-Ngibise, K. A.; Gould, C. F.; Owusu-Agyei, S.; Mujtaba, M.; Manu, G.; Burkart, K.; Kinney, P. L.; Quinn, A.; Jack, D. W.; Asante, K. P. The Effect of Clean Cooking Interventions on Mother and Child Personal Exposure to Air Pollution: Results from the Ghana Randomized Air Pollution and Health Study (GRAPHS). *J Expo Sci Environ Epidemiol* **2021**, 31 (4), 683–698. <https://doi.org/10.1038/s41370-021-00309-5>.
- (9) Mortimer, K.; Lesosky, M.; Semple, S.; Malava, J.; Katundu, C.; Crampin, A.; Wang, D.; Weston, W.; Pope, D.; Havens, D.; Gordon, S. B.; Balmes, J. Pneumonia and Exposure to Household Air Pollution in Children Under the Age of 5 Years in Rural Malawi: Findings From the Cooking and Pneumonia Study. *Chest* **2020**, 158 (2), 501–511. <https://doi.org/10.1016/j.chest.2020.03.064>.
- (10) Woolley, K. E.; Dickinson-Craig, E.; Lawson, H. L.; Sheikh, J.; Day, R.; Pope, F. D.; Greenfield, S. M.; Bartington, S. E.; Warburton, D.; Manaseki-Holland, S.; Price, M. J.; Moore, D. J.; Thomas, G. N. Effectiveness of Interventions to Reduce Household Air Pollution from Solid Biomass Fuels and Improve

- Maternal and Child Health Outcomes in Low- and Middle-Income Countries: A Systematic Review and Meta-Analysis. *Indoor Air* **2022**, 32 (1), e12958. <https://doi.org/10.1111/ina.12958>.
- (11) Pope, D.; Johnson, M.; Fleeman, N.; Jagoe, K.; Duarte, R.; Maden, M.; Ludolph, R.; Bruce, N.; Shupler, M.; Adair-Rohani, H.; Lewis, J. Are Cleaner Cooking Solutions Clean Enough? A Systematic Review and Meta-Analysis of Particulate and Carbon Monoxide Concentrations and Exposures. *Environ. Res. Lett.* **2021**, 16 (8), 083002. <https://doi.org/10.1088/1748-9326/ac13ec>.
- (12) Quinn, A. K.; Williams, K. N.; Thompson, L. M.; Harvey, S. A.; Piedrahita, R.; Wang, J.; Quinn, C.; Pillarisetti, A.; McCracken, J. P.; Rosenthal, J. P.; Kirby, M. A.; Diaz Artiga, A.; Thangavel, G.; Rosa, G.; Miranda, J. J.; Checkley, W.; Peel, J. L.; Clasen, T. F. Fidelity and Adherence to a Liquefied Petroleum Gas Stove and Fuel Intervention during Gestation: The Multi-Country Household Air Pollution Intervention Network (HAPIN) Randomized Controlled Trial. *IJERPH* **2021**, 18 (23), 12592. <https://doi.org/10.3390/ijerph182312592>.
- (13) Williams, K. N.; Quinn, A.; North, H.; Wang, J.; Pillarisetti, A.; Thompson, L. M.; Díaz-Artiga, A.; Balakrishnan, K.; Thangavel, G.; Rosa, G.; Ndagijimana, F.; Underhill, L. J.; Kirby, M. A.; Puzzolo, E.; Hossen, S.; Waller, L. A.; Peel, J. L.; Rosenthal, J. P.; Clasen, T. F.; Harvey, S. A.; Checkley, W.; Investigators, the H. Fidelity and Adherence to a Liquefied Petroleum Gas Stove and Fuel Intervention: The Multi-Country Household Air Pollution Intervention Network (HAPIN) Trial. medRxiv June 27, 2023, p 2023.06.20.23291670. <https://doi.org/10.1101/2023.06.20.23291670>.
- (14) Johnson, M.; Pillarisetti, A.; Piedrahita, R.; Balakrishnan, K.; Peel, J. L.; Steenland, K.; Underhill, L. J.; Rosa, G.; Kirby, M. A.; Díaz-Artiga, A.; McCracken, J.; Clark, M. L.; Waller, L.; Chang, H. H.; Wang, J.; Dusabimana, E.; Ndagijimana, F.; Sambandam, S.; Mukhopadhyay, K.; Kearns, K. A.; Campbell, D.; Kremer, J.; Rosenthal, J. P.; Checkley, W.; Clasen, T.; Naeher, L.; the Household Air Pollution Intervention Network (HAPIN) Trial Investigators. Exposure Contrasts of Pregnant Women during the Household Air Pollution Intervention Network Randomized Controlled Trial. *Environ Health Perspect* **2022**, 130 (9), 97005. <https://doi.org/10.1289/EHP10295>.
- (15) Zhu, K.; Kawyn, M. N.; Kordas, K.; Mu, L.; Yoo, E.-H.; Seibert, R.; Smith, L. E. Assessing Exposure to Household Air Pollution in Children under Five: A Scoping Review. *Environmental Pollution* **2022**, 311, 119917. <https://doi.org/10.1016/j.envpol.2022.119917>.
- (16) Zhang, Y.; Yin, Z.; Zhou, P.; Zhang, L.; Zhao, Z.; Norbäck, D.; Zhang, X.; Lu, C.; Yu, W.; Wang, T.; Zheng, X.; Zhang, L.; Zhang, Y. Early-Life Exposure to PM_{2.5} Constituents and Childhood Asthma and Wheezing: Findings from China, Children, Homes, Health Study. *Environment International* **2022**, 165, 107297. <https://doi.org/10.1016/j.envint.2022.107297>.
- (17) Boamah-Kaali, E.; Jack, D. W.; Ae-Ngibise, K. A.; Quinn, A.; Kaali, S.; Dubowski, K.; Oppong, F. B.; Wylie, B. J.; Mujtaba, M. N.; Gould, C. F.; Gyaase, S.; Chillrud, S.; Owusu-Agyei, S.; Kinney, P. L.; Asante, K. P.; Lee, A. G. Prenatal and Postnatal Household Air Pollution Exposure and Infant Growth Trajectories: Evidence from a Rural Ghanaian Pregnancy Cohort. *Environ Health Perspect* **2021**, 129 (11), 117009. <https://doi.org/10.1289/EHP8109>.
- (18) Kaali, S.; Jack, D. W.; Prah, R. K. D.; Chillrud, S. N.; Mujtaba, M. N.; Kinney, P. L.; Tawiah, T.; Yang, Q.; Oppong, F. B.; Gould, C. F.; Osei, M.; Wylie, B. J.; Agyei, O.; Perzanowski, M. S.; Asante, K. P.; Lee, A. G. Poor Early Childhood Growth Is Associated with Impaired Lung Function: Evidence from a Ghanaian Pregnancy Cohort. *Pediatric Pulmonology* **2022**, 57 (9), 2136–2146. <https://doi.org/10.1002/ppul.26015>.
- (19) Allen-Piccolo, G.; Rogers, J. V.; Edwards, R.; Clark, M. C.; Allen, T. T.; Ruiz-Mercado, I.; Shields, K. N.; Canuz, E.; Smith, K. R. An Ultrasound Personal Locator for Time-Activity Assessment. *Int J Occup Environ Health* **2009**, 15 (2), 122–132. <https://doi.org/10.1179/oeht.2009.15.2.122>.
- (20) Liao, J.; McCracken, J. P.; Piedrahita, R.; Thompson, L.; Mollinedo, E.; Canuz, E.; De León, O.; Díaz-Artiga, A.; Johnson, M.; Clark, M.; Pillarisetti, A.; Kearns, K.; Naeher, L.; Steenland, K.; Checkley, W.; Peel, J.; Clasen, T. F.; Hapin Investigators. The Use of Bluetooth Low Energy Beacon Systems to Estimate Indirect Personal Exposure to Household Air Pollution. *J Expo Sci Environ Epidemiol* **2019**. <https://doi.org/10.1038/s41370-019-0172-z>.
- (21) Balakrishnan, K.; Sambandam, S.; Ramaswamy, P.; Mehta, S.; Smith, K. R. Exposure Assessment for Respirable Particulates Associated with Household Fuel Use in Rural Districts of Andhra Pradesh, India. *J Expo Anal Environ Epidemiol* **2004**, 14 Suppl 1, S14-25. <https://doi.org/10.1038/sj.jea.7500354>.
- (22) Clasen, T.; Checkley, W.; Peel, J. L.; Balakrishnan, K.; McCracken, J. P.; Rosa, G.; Thompson, L. M.; Barr, D. B.; Clark, M. L.; Johnson, M. A.; Waller, L. A.; Jaacks, L. M.; Steenland, K.; Miranda, J. J.; Chang, H. H.; Kim, D.-Y.; McCollum, E. D.; Davila-Roman, V. G.; Papageorgiou, A.; Rosenthal, J. P.; HAPIN Investigators. Design and Rationale of the HAPIN Study: A Multicountry Randomized Controlled

- Trial to Assess the Effect of Liquefied Petroleum Gas Stove and Continuous Fuel Distribution. *Environ Health Perspect* **2020**, 128 (4), 47008. <https://doi.org/10.1289/EHP6407>.
- (23) Johnson, M. A.; Steenland, K.; Piedrahita, R.; Clark, M. L.; Pillarisetti, A.; Balakrishnan, K.; Peel, J. L.; Naeher, L. P.; Liao, J.; Wilson, D.; Sarnat, J.; Underhill, L. J.; Burrowes, V.; McCracken, J. P.; Rosa, G.; Rosenthal, J.; Sambandam, S.; de Leon, O.; Kirby, M. A.; Kearns, K.; Checkley, W.; Clasen, T.; HAPIN Investigators. Air Pollutant Exposure and Stove Use Assessment Methods for the Household Air Pollution Intervention Network (HAPIN) Trial. *Environ Health Perspect* **2020**, 128 (4), 047009. <https://doi.org/10.1289/EHP6422>.
- (24) Barr, D. B.; Puttaswamy, N.; Jaacks, L. M.; Steenland, K.; Rajkumar, S.; Gupton, S.; Ryan, P. B.; Balakrishnan, K.; Peel, J. L.; Checkley, W.; Clasen, T.; Clark, M. L.; (HAPIN Investigative Team). Design and Rationale of the Biomarker Center of the Household Air Pollution Intervention Network (HAPIN) Trial. *Environ Health Perspect* **2020**, 128 (4), 047010. <https://doi.org/10.1289/EHP5751>.
- (25) Liao, J.; Kirby, M. A.; Pillarisetti, A.; Piedrahita, R.; Balakrishnan, K.; Sambandam, S.; Mukhopadhyay, K.; Ye, W.; Rosa, G.; Majorin, F.; Dusabimana, E.; Ndagijimana, F.; McCracken, J. P.; Mollinedo, E.; de Leon, O.; Díaz-Artiga, A.; Thompson, L. M.; Kearns, K. A.; Naeher, L.; Rosenthal, J.; Clark, M. L.; Steenland, K.; Waller, L. A.; Checkley, W.; Peel, J. L.; Clasen, T.; Johnson, M.; Aravindalochanan, V.; Bankundiye, G.; Barr, D. B.; Bussalleu, A.; Canuz, E.; Castañaza, A.; Chen, Y.; Chiang, M.; Craik, R.; Davila-Roman, V. G.; de las Fuentes, L.; Elon, L.; Espinoza, J. G.; Garg, S.; Hamid, S.; Hartinger, S.; Harvey, S. A.; Hengstermann, M.; Hennessee, I.; Herrera, P. M.; Hossen, S.; Howards, P. P.; Jaacks, L.; Jabbarzadeh, S.; Lenzen, P.; Lovvorn, A. E.; Mbabazi, J.; McCollum, E.; Meyers, R.; Moulton, L.; Mukeshimana, A.; Mutariyani, B.; Natesan, D.; Nizam, A.; Ntivuguruzwa, J. de D.; Papageorghiou, A.; Puttaswamy, N.; Puzzolo, E.; Quinn, A.; Rajamani, K. D.; Ramakrishnan, U.; Ramasami, R.; Ramirez, A.; Ryan, P. B.; Saidam, S.; Sarnat, J. A.; Simkovich, S.; Sinharoy, S. S.; Smith, K. R.; Swearing, D.; Thangavel, G.; Toenjes, A.; Valdes, V.; Williams, K. N.; Ye, W.; Young, B. N. LPG Stove and Fuel Intervention among Pregnant Women Reduce Fine Particle Air Pollution Exposures in Three Countries: Pilot Results from the HAPIN Trial. *Environmental Pollution* **2021**, 291, 118198. <https://doi.org/10.1016/j.envpol.2021.118198>.
- (26) Sambandam, S.; Mukhopadhyay, K.; Sendhil, S.; Ye, W.; Pillarisetti, A.; Thangavel, G.; Natesan, D.; Ramasamy, R.; Natarajan, A.; Aravindalochanan, V.; Vinayagamoorthi, A.; Sivavadivel, S.; Uma Maheswari, R.; Balakrishnan, L.; Gayatri, S.; Nargunanathan, S.; Madhavan, S.; Puttaswamy, N.; Garg, S. S.; Quinn, A.; Rosenthal, J.; Johnson, M.; Liao, J.; Steenland, K.; Piedrahita, R.; Peel, J.; Checkley, W.; Clasen, T.; Balakrishnan, K. Exposure Contrasts Associated with a Liquefied Petroleum Gas (LPG) Intervention at Potential Field Sites for the Multi-Country Household Air Pollution Intervention Network (HAPIN) Trial in India: Results from Pilot Phase Activities in Rural Tamil Nadu. *BMC Public Health* **2020**, 20 (1), 1799. <https://doi.org/10.1186/s12889-020-09865-1>.
- (27) Balakrishnan, K.; Steenland, K.; Clasen, T.; Chang, H.; Johnson, M.; Pillarisetti, A.; Ye, W.; Naeher, L. P.; Diaz-Artiga, A.; McCracken, J. P.; Thompson, L. M.; Rosa, G.; Kirby, M. A.; Thangavel, G.; Sambandam, S.; Mukhopadhyay, K.; Puttaswamy, N.; Aravindalochanan, V.; Garg, S.; Ndagijimana, F.; Hartinger, S.; Underhill, L.; Kearns, K. A.; Campbell, D.; Kremer, J.; Waller, L.; Jabbarzadeh, S.; Wang, J.; Chen, Y.; Rosenthal, J.; Quinn, A.; Papageorghiou, A. T.; Ramakrishnan, U.; Howards, P. P.; Checkley, W.; Peel, J. L.; HAPIN Investigators. *Exposure–Response Relationships for Personal Exposure to Fine Particulate Matter (PM_{2.5}), Carbon Monoxide, and Black Carbon and Birthweight: Results from the Multi-Country Household Air Pollution Intervention Network (HAPIN) Trial*; preprint; Public and Global Health, 2022. <https://doi.org/10.1101/2022.08.06.22278373>.
- (28) Clasen, T. F.; Chang, H. H.; Thompson, L. M.; Kirby, M. A.; Balakrishnan, K.; Díaz-Artiga, A.; McCracken, J. P.; Rosa, G.; Steenland, K.; Younger, A.; Aravindalochanan, V.; Barr, D. B.; Castañaza, A.; Chen, Y.; Chiang, M.; Clark, M. L.; Garg, S.; Hartinger, S.; Jabbarzadeh, S.; Johnson, M. A.; Kim, D.-Y.; Lovvorn, A. E.; McCollum, E. D.; Monroy, L.; Moulton, L. H.; Mukeshimana, A.; Mukhopadhyay, K.; Naeher, L. P.; Ndagijimana, F.; Papageorghiou, A.; Piedrahita, R.; Pillarisetti, A.; Puttaswamy, N.; Quinn, A.; Ramakrishnan, U.; Sambandam, S.; Sinharoy, S. S.; Thangavel, G.; Underhill, L. J.; Waller, L. A.; Wang, J.; Williams, K. N.; Rosenthal, J. P.; Checkley, W.; Peel, J. L. Liquefied Petroleum Gas or Biomass for Cooking and Effects on Birth Weight. *N Engl J Med* **2022**, NEJMoa2206734. <https://doi.org/10.1056/NEJMoa2206734>.
- (29) Simkovich, S. M.; Underhill, L. J.; Kirby, M. A.; Goodman, D.; Crocker, M. E.; Hossen, S.; McCracken, J. P.; de León, O.; Thompson, L. M.; Garg, S. S.; Balakrishnan, K.; Thangavel, G.; Rosa, G.; Peel, J. L.; Clasen, T. F.; McCollum, E. D.; Checkley, W. Design and Conduct of Facility-Based Surveillance for

- Severe Childhood Pneumonia in the Household Air Pollution Intervention Network (HAPIN) Trial. *ERJ Open Res* **2020**, 6 (1), 00308–02019. <https://doi.org/10.1183/23120541.00308-2019>.
- (30) Bruce, N.; McCracken, J.; Albalak, R.; Scheid, M.; Smith, K. R.; Lopez, V.; West, C. Impact of Improved Stoves, House Construction and Child Location on Levels of Indoor Air Pollution Exposure in Young Guatemalan Children. *J Expo Sci Environ Epidemiol* **2004**, 14 (1), S26–S33. <https://doi.org/10.1038/sj.jea.7500355>.
- (31) Smith, K. R.; Mccracken, J. P.; Thompson, L.; Edwards, R.; Shields, K. N.; Canuz, E.; Bruce, N. Personal Child and Mother Carbon Monoxide Exposures and Kitchen Levels: Methods and Results from a Randomized Trial of Woodfired Chimney Cookstoves in Guatemala (RESPIRE). *J Expo Sci Environ Epidemiol* **2010**, 20 (5), 406–416. <https://doi.org/10.1038/jes.2009.30>.
- (32) Dionisio, K. L.; Howie, S. R. C.; Dominici, F.; Fornace, K. M.; Spengler, J. D.; Adegbola, R. A.; Ezzati, M. Household Concentrations and Exposure of Children to Particulate Matter from Biomass Fuels in The Gambia. *Environ. Sci. Technol.* **2012**, 46 (6), 3519–3527. <https://doi.org/10.1021/es203047e>.
- (33) Dionisio, K. L.; Howie, S. R. C.; Dominici, F.; Fornace, K. M.; Spengler, J. D.; Donkor, S.; Chimah, O.; Oluwalana, C.; Ideh, R. C.; Ebruke, B.; Adegbola, R. A.; Ezzati, M. The Exposure of Infants and Children to Carbon Monoxide from Biomass Fuels in The Gambia: A Measurement and Modeling Study. *J Expo Sci Environ Epidemiol* **2012**, 22 (2), 173–181. <https://doi.org/10.1038/jes.2011.47>.
- (34) Howie, S. R. C.; Schellenberg, J.; Chimah, O.; Ideh, R. C.; Ebruke, B. E.; Oluwalana, C.; Mackenzie, G.; Jallow, M.; Njie, M.; Donkor, S.; Dionisio, K. L.; Goldberg, G.; Fornace, K.; Bottomley, C.; Hill, P. C.; Grant, C. C.; Corrah, T.; Prentice, A. M.; Ezzati, M.; Greenwood, B. M.; Smith, P. G.; Adegbola, R. A.; Mulholland, K. Childhood Pneumonia and Crowding, Bed-Sharing and Nutrition: A Case-Control Study from The Gambia. *The International Journal of Tuberculosis and Lung Disease* **2016**, 20 (10), 1405–1415. <https://doi.org/10.5588/ijtld.15.0993>.
- (35) Barnes, B.; Mathee, A.; Thomas, E. The Impact of Health Behaviour Change Intervention on Indoor Air Pollution Indicators in the Rural North West Province, South Africa. *J. energy South. Afr.* **2011**, 22 (3), 35–44. <https://doi.org/10.17159/2413-3051/2011/v22i3a3220>.
- (36) Dherani, M. K.; Pope, D.; Tafatatha, T.; Heinsbroek, E.; Chartier, R.; Mwalukomo, T.; Crampin, A.; Mitsi, E.; German, E. L.; Nikolaou, E.; Solórzano, C.; Ferreira, D. M.; Swarthout, T. D.; Hinds, J.; Mortimer, K.; Gordon, S. B.; French, N.; Bruce, N. G. Association between Household Air Pollution and Nasopharyngeal Pneumococcal Carriage in Malawian Infants (MSCAPE): A Nested, Prospective, Observational Study. *The Lancet Global Health* **2022**, 10 (2), e246–e256. [https://doi.org/10.1016/S2214-109X\(21\)00405-8](https://doi.org/10.1016/S2214-109X(21)00405-8).
- (37) Thornburg, J.; Halchenko, Y.; McCombs, M.; Siripanichgon, N.; Dowell, E.; Cho, S.-H.; Egner, J.; Sayarath, V.; Karagas, M. R. Children’s Particulate Matter Exposure Characterization as Part of the New Hampshire Birth Cohort Study. *Int J Environ Res Public Health* **2021**, 18 (22), 12109. <https://doi.org/10.3390/ijerph182212109>.
- (38) Kirby, M. A.; Nagel, C. L.; Rosa, G.; Zambrano, L. D.; Musafiri, S.; Ngirabega, J. de D.; Thomas, E. A.; Clasen, T. Effects of a Large-Scale Distribution of Water Filters and Natural Draft Rocket-Style Cookstoves on Diarrhea and Acute Respiratory Infection: A Cluster-Randomized Controlled Trial in Western Province, Rwanda. *PLoS Med* **2019**, 16 (6), e1002812. <https://doi.org/10.1371/journal.pmed.1002812>.
- (39) Daouda, M.; Mujtaba, M. N.; Yang, Q.; Seyram, K.; Lee, A. G.; Tawiah, T.; Ae-Ngibise, K. A.; Chillrud, S. N.; Jack, D.; Asante, K. P. Prediction of Personal Exposure to PM_{2.5} in Mother-Child Pairs in Rural Ghana. *J Expo Sci Environ Epidemiol* **2022**, 32 (4), 629–636. <https://doi.org/10.1038/s41370-022-00420-1>.
- (40) Blount, R. J.; Phan, H.; Trinh, T.; Dang, H.; Merrifield, C.; Zavala, M.; Zabner, J.; Comellas, A. P.; Stapleton, E. M.; Segal, M. R.; Balmes, J.; Nhung, N. V.; Nahid, P. Indoor Air Pollution and Susceptibility to Tuberculosis Infection in Urban Vietnamese Children. *Am J Respir Crit Care Med* **2021**, 204 (10), 1211–1221. <https://doi.org/10.1164/rccm.202101-0136OC>.
- (41) Hartinger, S. M.; Nuño, N.; Hattendorf, J.; Verastegui, H.; Karlen, W.; Ortiz, M.; Mäusezahl, D. A Factorial Cluster-Randomised Controlled Trial Combining Home-Environmental and Early Child Development Interventions to Improve Child Health and Development: Rationale, Trial Design and Baseline Findings. *BMC Medical Research Methodology* **2020**, 20 (1), 73. <https://doi.org/10.1186/s12874-020-00950-y>.
- (42) Das, I.; Pedit, J.; Handa, S.; Jagger, P. Household Air Pollution (HAP), Microenvironment and Child Health: Strategies for Mitigating HAP Exposure in Urban Rwanda. *Environ. Res. Lett.* **2018**, 13 (4), 045011. <https://doi.org/10.1088/1748-9326/aab047>.

- (43) Okello, G.; Devereux, G.; Semple, S. Women and Girls in Resource Poor Countries Experience Much Greater Exposure to Household Air Pollutants than Men: Results from Uganda and Ethiopia. *Environment International* **2018**, *119*, 429–437. <https://doi.org/10.1016/j.envint.2018.07.002>.

Table 1. Household and other adult women participant characteristics at baseline, by IRC and study arm.

Variable	Guatemala		India		Peru		Rwanda		Trial-wide	
	Control (n = 378)	Intervention (n = 376)	Control (n = 380)	Intervention (n = 381)	Control (n = 347)	Intervention (n = 375)	Control (n = 384)	Intervention (n = 365)	Control (n = 1489)	Intervention (n = 1497)
<i>Household and kitchen characteristics</i>										
Household Size										
Mean (SD)	5.1 (2.6)	5.2 (2.6)	3.8 (1.5)	3.8 (1.6)	4.6 (1.7)	4.5 (1.8)	3.5 (1.5)	3.5 (1.5)	4.3 (2)	4.3 (2)
Range	2-18	2-13	2-9	1-10	2-10	2-11	1-10	1-10	1-18	1-13
Access to electricity, n (%)										
No	35 (9.3)	42 (11.2)	15 (3.9)	12 (3.1)	20 (5.8)	20 (5.3)	259 (67.4)	202 (55.3)	329 (22.1)	276 (18.4)
Yes	342 (90.7)	334 (88.8)	365 (96.1)	369 (96.9)	327 (94.2)	355 (94.7)	99 (25.8)	142 (38.9)	1134 (76.2)	1200 (80.2)
Missing	0	0	0	0	0	0	26 (6.8)	21 (5.8)	26 (1.7)	21 (1.4)
Kitchen volume (m3)										
Mean (SD)	33.3 (16.2)	34.1 (17.4)	20.5 (13.8)	22 (16.1)	19.9 (12.7)	18.9 (11.7)	11.7 (6.3)	13.2 (7.1)	22.2 (15.3)	23.0 (16.1)
Range	7.1-99.9	6.9-125	0.4-86.2	0.6-135	1.8-117	0.1-83	0.2-41.5	0.2-52.5	0.2-117	0.1-135
Missing, n (%)	21 (5.6)	21 (5.6)	12 (3.2)	8 (2.1)	94 (27.1)	95 (25.3)	125 (32.6)	114 (31.2)	252 (51.4)	238 (48.6)
Roof in the kitchen, n (%)										
No	1 (0.3)	1 (0.3)	1 (0.3)	3 (0.8)	76 (21.9)	82 (21.9)	117 (30.5)	110 (30.1)	195 (13.1)	196 (13.1)
Yes	373 (98.7)	374 (99.5)	379 (99.7)	378 (99.2)	269 (77.5)	293 (78.1)	266 (69.3)	254 (69.6)	1287 (86.4)	1302 (86.8)
Missing, n (%)	4 (1.1)	1 (0.3)	0	0	2 (0.6)	0	1 (0.3)	1 (0.3)	7 (0.5)	2 (0.1)
Number of stoves, n (%)										
One	132 (34.9)	123 (32.7)	259 (68.2)	268 (70.3)	92 (26.5)	88 (23.5)	235 (61.4)	213 (58.4)	718 (48.3)	692 (46.3)
Two	216 (57.1)	219 (58.2)	118 (31.1)	107 (28.1)	245 (70.6)	276 (73.8)	129 (33.7)	136 (37.3)	708 (47.6)	738 (49.3)
Three or more	30 (7.9)	34 (9.0)	3 (0.8)	6 (1.6)	9 (2.6)	9 (2.4)	18 (4.7)	15 (4.1)	60 (4.0)	64 (4.3)
Missing	0	0	0	0	1 (0.3)	1 (0.3)	1 (0.3)	1 (0.3)	2 (0.1)	2 (0.1)
Primary stove has a chimney, n (%)										
No	294 (77.8)	296 (78.7)	378 (99.5)	379 (99.5)	216 (62.2)	237 (63.2)	363 (94.5)	353 (96.7)	1251 (84.0)	1265 (84.5)
Yes	84 (22.2)	80 (21.3)	2 (0.5)	2 (0.5)	130 (37.5)	138 (36.8)	20 (5.2)	11 (3.0)	236 (15.8)	231 (15.4)
Missing	0	0	0	0	1 (0.3)	0	1 (0.3)	1 (0.3)	2 (0.1)	1 (0.1)
Primary fuel type, n (%)										
Cow dung	0	0	0	0	303 (87.3)	328 (87.5)	0	0	303 (20.3)	328 (21.9)
Wood	3712(98.4)	375 (99.7)	380 (100%)	381 (100%)	41 (11.8)	39 (10.4)	305 (79.4)	238 (65.2)	1098 (73.7)	1033 (69.0)
Charcoal	0	0	0	0	0	0	70 (18.2)	116 (31.8)	70 (4.7)	116 (7.7)
Other	2 (0.5)	1 (0.3)	0	0	2 (0.6)	8 (2.1)	8 (2.1)	10 (2.7)	12 (0.8)	19 (1.3)
Missing	4 (1.1)	0	0	0	1 (0.3)	0	1 (0.3)	1 (0.3)	6 (0.4)	1 (0.1)
Primary stove location, n (%)										
In participant's bedroom	17 (4.5)	17 (4.5)	70 (18.4)	93 (24.4)	0	4 (1.1)	2 (0.5)	4 (1.1)	89 (6.0)	118 (7.9)

Room immediately adjacent to the participant's bedroom	189 (50.0)	173 (46.0)	140 (36.8)	115 (30.2)	27 (7.8)	22 (5.9)	9 (2.3)	14 (3.8)	365 (24.5)	324 (21.6)
Separated from the participant's bedroom but inside the house	97 (25.7)	115 (30.6)	67 (17.6)	67 (17.6)	56 (16.1)	69 (18.4)	18 (4.7)	19 (5.2)	238 (16.0)	270 (18.0)
Outside the house (outdoors)	5 (1.3)	7 (1.9)	1 (0.3)	2 (0.5)	85 (24.5)	87 (23.2)	117 (30.5)	115 (31.5)	208 (14.0)	211 (14.1)
In a separate building detached from the bedroom-main home	69 (18.3)	64 (17.0)	102 (26.8)	104 (27.3)	177 (51.0)	192 (51.2)	237 (61.7)	212 (58.1)	585 (39.3)	572 (38.2)
Other/Missing	1 (0.3)	0	0	0	2 (0.6)	1 (0.3)	1 (0.3)	1 (0.3)	4 (0.3)	2 (0.1)
Primary light source, n (%)										
Torch (battery)	5 (1.3)	5 (1.3)	4 (1.1)	7 (1.8)	4 (1.2)	7 (1.9)	84 (21.9)	79 (21.6)	97 (6.5)	98 (6.5)
Kerosene lamp	1 (0.3)	5 (1.3)	8 (2.1)	7 (1.8)	1 (0.3)	0	36 (9.4)	20 (5.5)	46 (3.1)	32 (2.1)
Solar light	0	2 (0.5)	2 (0.5)	1 (0.3)	10 (2.9)	11 (2.9)	132 (34.4)	108 (29.6)	144 (9.7)	122 (8.1)
Electricity	343 (90.7)	328 (87.2)	366 (96.3)	366 (96.1)	319 (91.9)	342 (91.2)	83 (21.6)	127 (34.8)	1111 (74.6)	1163 (77.7)
Other	29 (7.7)	36 (9.6)	0	0	12 (3.5)	15 (4.0)	48 (12.5)	30 (8.2)	89 (6.0)	81 (5.4)
Missing	0	0	0	0	1 (0.3)	0	1 (0.3)	1 (0.3)	2 (0.1)	1 (0.1)
Presence of a smoker in home, n (%)										
No	358 (94.7)	357 (94.9)	252 (66.3)	268 (70.3)	343 (98.8)	372 (99.2)	365 (95.1)	357 (97.8)	1318 (88.5)	1354 (90.4)
Yes	20 (5.3)	19 (5.1)	128 (33.7)	113 (29.7)	3 (0.9)	3 (0.8)	18 (4.7)	7 (1.9)	169 (11.3)	142 (9.5)
Missing	0	0	0	0	1 (0.3)	0	1 (0.3)	1 (0.3)	2 (0.1)	1 (0.1)
<i>Child characteristics</i>										
Child sex, n (%)										
Female	186 (49.2)	178 (47.3)	174 (45.8)	177 (46.5)	176 (50.7)	185 (49.3)	183 (47.7)	181 (49.6)	719 (48.3)	721 (48.2)
Male	192 (50.8)	198 (52.7)	206 (54.2)	204 (53.5)	171 (49.3)	190 (50.7)	201 (52.3)	184 (50.4)	770 (51.7)	776 (51.8)
Gestational age at delivery, n (%)										
Mean (SD)	39.2 (1.3)	39.2 (1.5)	38.9 (1.4)	38.9 (1.5)	39.3 (1.4)	39.4 (1.3)	40 (1.6)	39.9 (1.6)	39.3 (1.5)	39.4 (1.5)
Range	31.7-42.6	32.6-43.4	32.3-41.7	29.6-42.3	29.4-43.3	33.6-42.6	30.6-44.4	29.0-44.0	29.4-44.4	29.0-44.0
Preterm birth, n (%)										
No	356 (94.2)	355 (92.4)	358 (94.2)	355 (93.2)	336 (96.8)	357 (95.2)	368 (95.8)	353 (96.7)	1419 (95.2)	1420 (94.9)
Yes	22 (5.8)	21 (5.6)	22 (5.8)	26 (6.8)	11 (3.2)	18 (4.8)	16 (4.2)	12 (3.3)	71 (4.8)	77 (5.1)

Table 2. Summary of 24-hour child indirect exposure to PM_{2.5} and CO by study arm and visit

Visit		PM _{2.5} Exposure		CO Exposure	
		Control	Intervention	Control	Intervention
B1	N	629	554	604	620
	Mean (SD)	108.8 (125)	39.3 (119.5)	2.4 (4)	0.8 (2.3)
	Median (IQR)	66.5 (33.7 — 123.7)	23.1 (17.4 — 36.9)	1.1 (0.3 — 2.8)	0.2 (0 — 0.6)
	Range	9.6-1037.7	0.2-2294	0-43.1	0-40.9
B2	N	465	452	459	516
	Mean (SD)	111.9 (146.9)	34.6 (69.4)	2.6 (4.6)	0.7 (1.5)
	Median (IQR)	59.9 (30.8 — 122.7)	23 (17.1 — 34.7)	1.1 (0.3 — 3.1)	0.2 (0 — 0.7)
	Range	8.6-1133.2	1.1-1068.8	0-51.8	0-16.5
B4	N	358	318	341	366
	Mean (SD)	123.6 (161.6)	38.6 (87.5)	2.7 (5.1)	0.9 (2.6)
	Median (IQR)	71.8 (35.8 — 139)	22 (17 — 33.6)	1 (0.3 — 2.7)	0.1 (0 — 0.7)
	Range	9.4-1393.9	6.9-1121	0-58.2	0-31.6
Post-birth Overall	N	1452	1324	1404	1502
	Mean (SD)	113.4 (141.9)	37.5 (97.2)	2.5 (4.5)	0.8 (2.1)
	Median (IQR)	65.1 (33 — 128.2)	22.9 (17.2 — 35.3)	1.1 (0.3 — 2.9)	0.2 (0 — 0.7)
	Range	8.6-1393.9	0.2-2294	0-58.2	0-40.9
Post-birth Overall (household-average measures)	N	933	848	916	965
	Mean (SD)	109.3 (122.7)	37.8 (97.4)	2.6 (4.1)	0.9 (2)
	Median (IQR)	66 (35.2 — 132.2)	24.2 (17.8 — 36.4)	1.3 (0.4 — 3)	0.3 (0 — 0.8)
	Range	8.6-832.5	0.2-2294	0-51.8	0-31.6

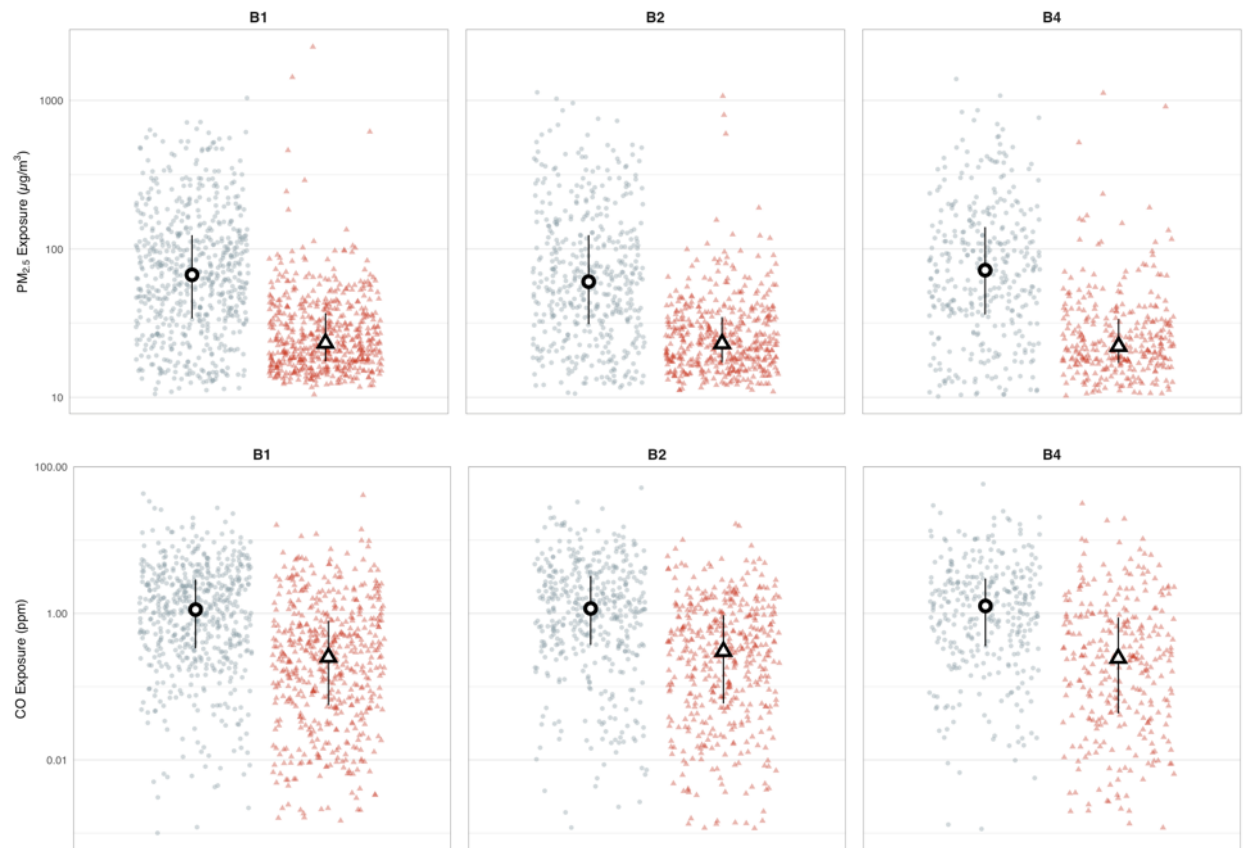


Figure 1. 24-hour child indirect $PM_{2.5}$ (upper) and CO (lower) exposures. Red (right) and blue (left) dots are study round samples in intervention and control households, respectively. Circles and triangles outlined in black are median values in control and intervention households, respectively. Lines are interquartile ranges. B1 = post-birth visit 1 (< 3 months, $N_{\text{control}} = 584$, $N_{\text{intervention}} = 531$), B2 = post-birth visit 2 (~ 6 months, $N_{\text{control}} = 441$, $N_{\text{intervention}} = 444$), B3 = post-birth visit 3 (~ 12 months, $N_{\text{control}} = 325$, $N_{\text{intervention}} = 300$)

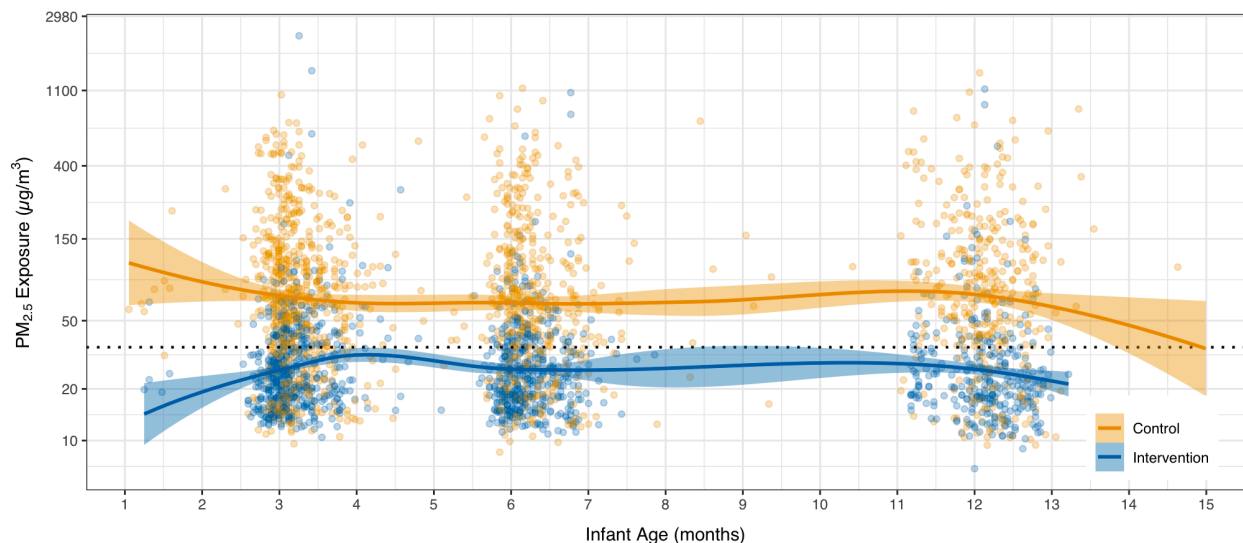


Figure 2. Trends in $PM_{2.5}$ exposure. The x-axis is the infant age in days, calculated as the number of days between the exposure measurement date and a child's birthday. Solid lines are a locally weighted smoothing (LOESS) function. Shaded areas are standard errors. Yellow (lighter) points are individual data points from control households; blue (darker) points are from intervention households.

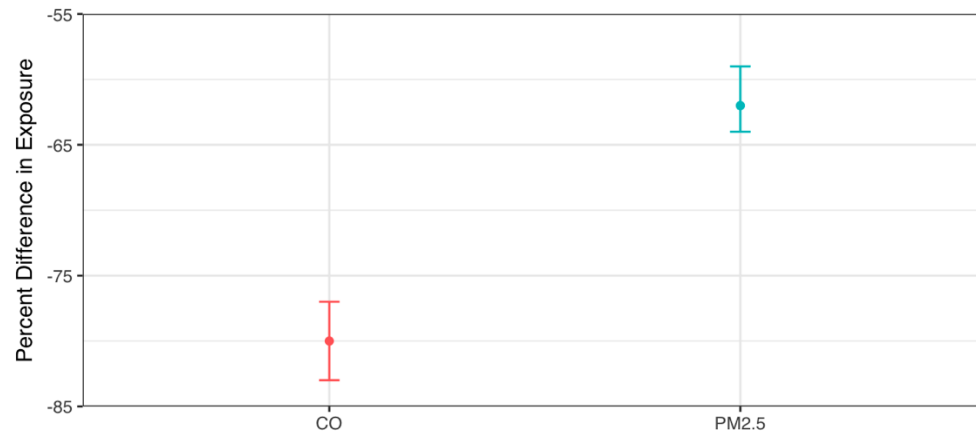


Figure 3. Modeled impacts of the HAPIN LPG intervention on child's $PM_{2.5}$ and CO exposure. Linear mixed-effects models had log-transformed pollutant exposures as the dependent variable. Whiskers are 95% confidence intervals. Data presented contrast the intervention arm with the control arm. Note: HAPIN, Household Air Pollution Intervention Network; LPG, liquefied petroleum gas; $PM_{2.5}$, particulate matter with an aerodynamic diameter less than or equal to 2.5 μm ; CO, carbon monoxide.

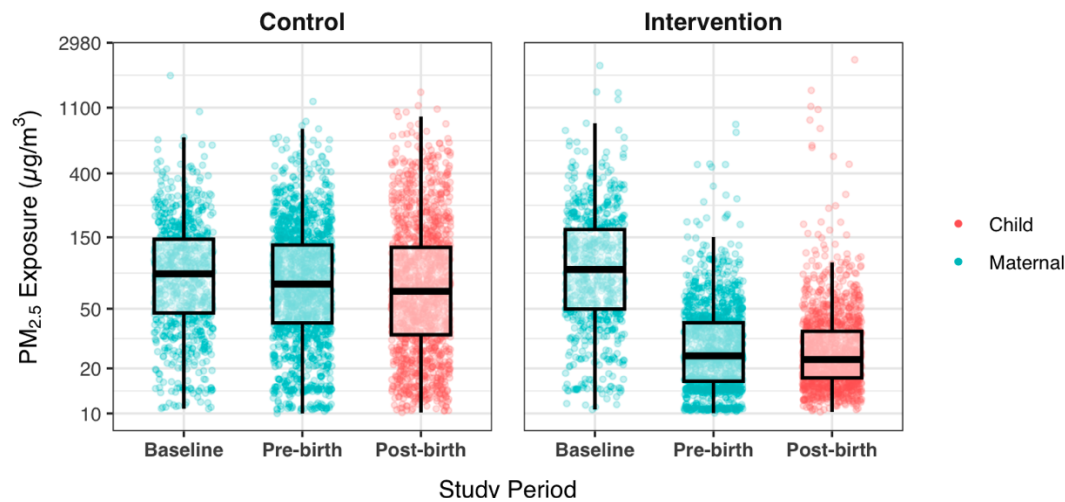


Figure 4. Comparison of $PM_{2.5}$ exposures between maternal measurements made during pregnancy and measurement reconstructed for children post-birth. The *Control* panel contains data for households randomized to continue use of biomass; data in the *Intervention* panel are from households randomized to LPG. Baseline measurements were made prior to randomization. Pre-birth measurements were made during pregnancy. Blue dots indicate maternal measurements previously reported; red dots are findings from this study. Data are presented as box plots. The lower and upper hinges correspond to the first and third quartiles (the 25th and 75th percentiles). The upper and lower whiskers extend 1.5 times the interquartile range above and below the upper and lower hinges. Data beyond the whiskers are outliers.