

1  
2  
3  
4  
5  
6  
7  
8  
9  
10  
11  
12  
13  
14  
15  
16  
17  
18  
19

# **Membrane Computing Simulation of Sexually Transmitted Bacterial Infections in Hotspots of Individuals with Various Risk Behaviors**

**Marcelino Campos<sup>a,c</sup>, Juan Carlos Galán<sup>a,b,\*</sup>, Mario Rodríguez-Dominguez<sup>a,b</sup>, José M. Sempere<sup>c</sup>, Carlos Llorens<sup>d</sup>, Fernando Baquero<sup>a,b,\*</sup>**

<sup>a</sup>Department of Microbiology, Ramón y Cajal University Hospital, IRYCIS, Madrid, Spain

<sup>b</sup>Center for Biomedical Research in Epidemiology and Public Health Network (CIBERESP) Madrid, Spain

<sup>c</sup>Valencian Research Institute for Artificial Intelligence (VRAIN), Polytechnic University of Valencia, Valencia, Spain

<sup>d</sup>Biotechvana, Valencia, Scientific Park University of Valencia, Paterna, Spain

\*Co-corresponding authors

20 **Abstract**

21 The epidemiology of sexually transmitted infections (STIs) is complex due to the coexistence  
22 of various pathogens, the variety of transmission modes derived from sexual orientations and  
23 behaviors at different ages and genders, and sexual contact hotspots resulting in network  
24 transmission. There is also a growing proportion of recreational drug users engaged in high-  
25 risk sexual activities, as well as pharmacological self-protection routines fostering non-condom  
26 practices. The frequency of asymptomatic patients makes it difficult to develop a  
27 comprehensive approach to STI epidemiology. Modeling approaches are required to deal with  
28 such complexity. Membrane computing is a natural computing methodology for virtual  
29 reproduction of epidemics under the influence of deterministic and stochastic events with an  
30 unprecedented level of granularity. The application of the LOIMOS program to STI  
31 epidemiology illustrates the possibility of using it to shape appropriate interventions. Under the  
32 conditions of our basic landscape, including sexual hotspots of individuals with various risk  
33 behaviors, an increase in condom use reduces STIs in a larger proportion of heterosexuals than  
34 in same-gender sexual contacts and is much more efficient for reducing *N. gonorrhoeae* than  
35 *Chlamydia* and lymphogranuloma venereum infections. Amelioration from diagnostic STI  
36 screening could be instrumental in reducing *N. gonorrhoeae* infections, particularly in men  
37 having sex with men (MSM), and *C. trachomatis* infections in the heterosexual population;  
38 however, screening was less effective in decreasing lymphogranuloma venereum infections in  
39 MSM. The influence of STI epidemiology of sexual contacts between different age groups (<35  
40 and  $\geq 35$  years) and in bisexual populations were also submitted for simulation.

41

42

43 **Importance (150)**

44 The epidemiology of sexually transmitted infections (STIs) is complex and significantly  
45 influences sexual and reproductive health worldwide. Gender, age, sexual orientation, sexual  
46 behavior (including recreational drug use and physical and pharmacological protection  
47 practices), the structure of sexual contact networks, and the limited application or efficiency of  
48 diagnostic screening procedures creates variable landscapes in different countries. Modeling  
49 techniques are required to deal with such complexity. We propose the use of a simulation  
50 technology based on membrane computing, mimicking *in silico* STI epidemics under various  
51 local conditions with an unprecedented level of detail. This approach allows us to evaluate the  
52 relative weight of the various epidemic drivers in various populations at risk and the possible  
53 outcomes of interventions in particular epidemiological landscapes.

54

55 **Keywords**

56 **Sexually transmitted infections, *Neisseria gonorrhoeae*, *Chlamydia trachomatis*,**  
57 **Lymphogranuloma venereum, Sexual orientation, Sexual behavior, Sexual contact**  
58 **hotspots, Chemsex, PReP, Bisexual contacts, Trans-age sexual contacts, Diagnostic**  
59 **screening procedures, Sexual health education.**

60

61

62

63

64

## 65 INTRODUCTION

66 In the first decade of the 21st century, the incidence of sexually transmitted infections (STIs)  
67 increased worldwide, with an even more marked increase in recent years. Thus, all international  
68 organizations consider STIs a current public health problem that requires a rapid and effective  
69 multidisciplinary approach. In 2020, the World Health Organization (WHO) estimated 374  
70 million new STIs, with bacterial infections caused by *Chlamydia trachomatis* and *Neisseria*  
71 *gonorrhoeae* the most frequently detected ([https://www.who.int/news-room/fact-](https://www.who.int/news-room/fact-sheets/detail/sexually-transmitted-infections)  
72 *sheets/detail/sexually-transmitted-infections*). These infections have considerable impact on the  
73 sexual and reproductive health of infected people, both symptomatic and asymptomatic (1vg).  
74 The 75th Assembly of the WHO, highly aware of the worldwide increase in STIs, redesigned  
75 the Global Health Sector Strategy from 2016-2021, including in the same program HIV,  
76 hepatitis, and STIs for the 2022-2030 period (2wh). This integrated view could be an excellent  
77 opportunity to include STIs in national surveillance programs, which have examined other  
78 diseases with a high burden and population impact. Two aspects of concern are particularly  
79 relevant: the worldwide underdiagnosis of STIs as a consequence of poor screening and low  
80 risk perception from individuals and groups prone to exposure and infection.

81 Recently, the Australian Government Department of Health, through the Kirby Institute,  
82 published their 2021 national STI incidence. In accordance with data from international  
83 organizations, they found a significant increase in gonorrhoea and a slight increase in *Chlamydia*.  
84 However, they estimate that only 20%-28% of all gonorrhoea and *Chlamydia* infections have  
85 been diagnosed (3kj). Moreover, there are large differences (around 100-fold) in the incidence  
86 of *Chlamydia* infections among various European countries, probably due to differences in the  
87 amount of chlamydia testing (4eu). Unfortunately, this situation is compounded by the fact that  
88 many infected people have no signs or symptoms of infection (5fe). In our experience, in Spain,

89 80% of *C. trachomatis* infections and 20% of LGV infections are asymptomatic (data not  
90 shown). Infected asymptomatic individuals and those who do not perceive their risk of infection  
91 are key to the maintenance of STI infections in the population.

92 Another factor influencing STI epidemiology is derived from highly interconnected sexual  
93 networks, which facilitate the rapid spread of new infections among people with high-risk  
94 sexual behaviors (e.g., multiple sexual partners, condomless sex, sex with unknown people,  
95 alcohol use, recreational drug use), revealing the excessive vulnerability to new threats, as we  
96 learned with the recent international mpox outbreak in 2022 (6hj), which is associated with  
97 sexual transmission (7ck). High connectivity is facilitated by online dating apps for recreational  
98 sex, which expand sexual networks (8hm). The increase in reported cases that are closely  
99 associated with highly interconnected networks could also be due in part to the progressive  
100 implementation of pre-exposition prophylaxis (PrEP) to prevent new HIV infections in people  
101 with high exposure and infection risk. To improve the fight against the HIV pandemic, the PrEP  
102 strategy has also generated less condom use (9aa). Since PrEP implementation, a reduction in  
103 new HIV diagnoses has coincided with an increase in STIs (10aa).

104 The overwhelming complexity of factors determining STI epidemiology, involving various  
105 microbial organisms, modes and frequencies of transmission derived from sexual orientations  
106 and behaviors at different ages, the use of chemsex (drugs facilitating or enhancing sexual  
107 activity), PrEP, the variable symptomatology along the infective process (eventually treated),  
108 and the difficulties in detecting asymptomatic cases, makes it difficult to provide an integrated  
109 view of this significant health problem, which can only be approached by using mathematical  
110 or computational modeling. Although simulation modeling to understand STI spread remains  
111 scarcely implemented, recent international public health emergencies decreed by the WHO in  
112 2022 (concerning mpox) have stimulated this approach. Its recent use in the international mpox

113 outbreaks has contributed to understanding and predicting STI evolution (11si). In this study,  
114 we simulate STI transmission patterns by membrane computing, which derives from the larger  
115 field of cellular computing (12pj, 13pa). Membrane computing offers a unique opportunity to  
116 mimic epidemiological scenarios including individuals with different susceptibility to STI  
117 exposure (due to their age, gender, sexual orientation), which are represented as individual  
118 entities defined as “membranes.” These membranes are exposed by the action of particular  
119 “objects”; for example, particular types of protective tools (condoms), drugs or, in our case,  
120 microbes involved in STIs. These individuals can interact and transmit STIs in a particular  
121 meeting location and according to specific sexual behaviors, with variable probabilities of  
122 contact and transmission, in accord with rules that can be defined in the simulation model. Such  
123 interactions occur inside larger “environmental” membranes, describing the places where  
124 sexual meetings take place. In short, membrane computing creates scenarios in which events  
125 occur according to local conditions, probabilities, and the intensity of interactions between  
126 computational entities, resulting in predictable outcomes. In practical terms, cellular membrane  
127 computing mimics reality, creating “virtual epidemics” in the model, according to variant (à la  
128 carte) parameters established by the researcher, which can be based on the observed reality.  
129 Thus, various STI-oriented interventions (single or combined) can be applied to specific  
130 scenarios as a guide to select the most efficient. Most importantly, the model can help to identify  
131 possible unknown variables or parametric data (which are frequently difficult or impossible to  
132 obtain) influencing epidemic outcomes and can include the new variable and/or refine the  
133 parameters in such a way that the model adjusts to the local observed data. We have previously  
134 explored membrane computing applications in clinical microbiology in the fields of antibiotic  
135 resistance epidemiology and in SARS CoV-2 epidemic events and their vaccination control  
136 (14mc, 15mc, 16mc, 17gg). Our simulator (which is applicable to any infectious disease) is

137 named LOIMOS, from the ancient Greek *loimos* (*λιμός*), meaning plague, pestilence, or any  
138 deadly infectious disorder. A user-friendly interface is being developed for LOIMOS, and it  
139 will be freely available. Interested readers should contact our first author, Dr. Marcelino  
140 Campos ([mcampos@dsic.upv.es](mailto:mcampos@dsic.upv.es)), for more information.

141

## 142 **METHODS: THE BASIC EPIDEMIOLOGICAL PARAMETERS OF THE MODELED** 143 **SCENARIO**

### 144 **Outlook of the model: general demographics, distribution, and mobility**

145 In this study, we modeled STIs spreading within a target population of 16,000 sexually active  
146 people (8000 males and 8000 females) of various ages seeking sexual encounter hotspots. Each  
147 gender has 2000 heterosexuals (males seeking sex with females/females seeking sex with males  
148 [MSF/FSM]; for simplicity in the text, heterosexuals are termed MSF) in each age group (<35  
149 and  $\geq 35$  years) and 2000 homosexuals (males seeking sex with males [MSM] or females  
150 seeking sex with females [FSF] in equivalent numbers) in each age group. The present model  
151 aims to reveal the hypothetical dynamics of STI transmission among sexual hotspot users.  
152 Although it is difficult to generalize gender and sexual orientation proportions, and numerical  
153 differences could bias the results for a given group of users, the model allows the researcher to  
154 modify these proportions. In this model, the population lives in 20 home residential areas  
155 (HRAs) that differ in the density of inhabitants. The target sex-seeking population moves  
156 between home and various sexual encounter hotspots or “sexual exchange hotspots” (SEHs)  
157 where they can have sexual relations, eventually resulting in potential infection and STI  
158 transmission. These SEHs are distributed across 3 SEH networks (20 zones per network),  
159 corresponding to the preferential types of sexual partners: MSM, FSF, and MSF, creating

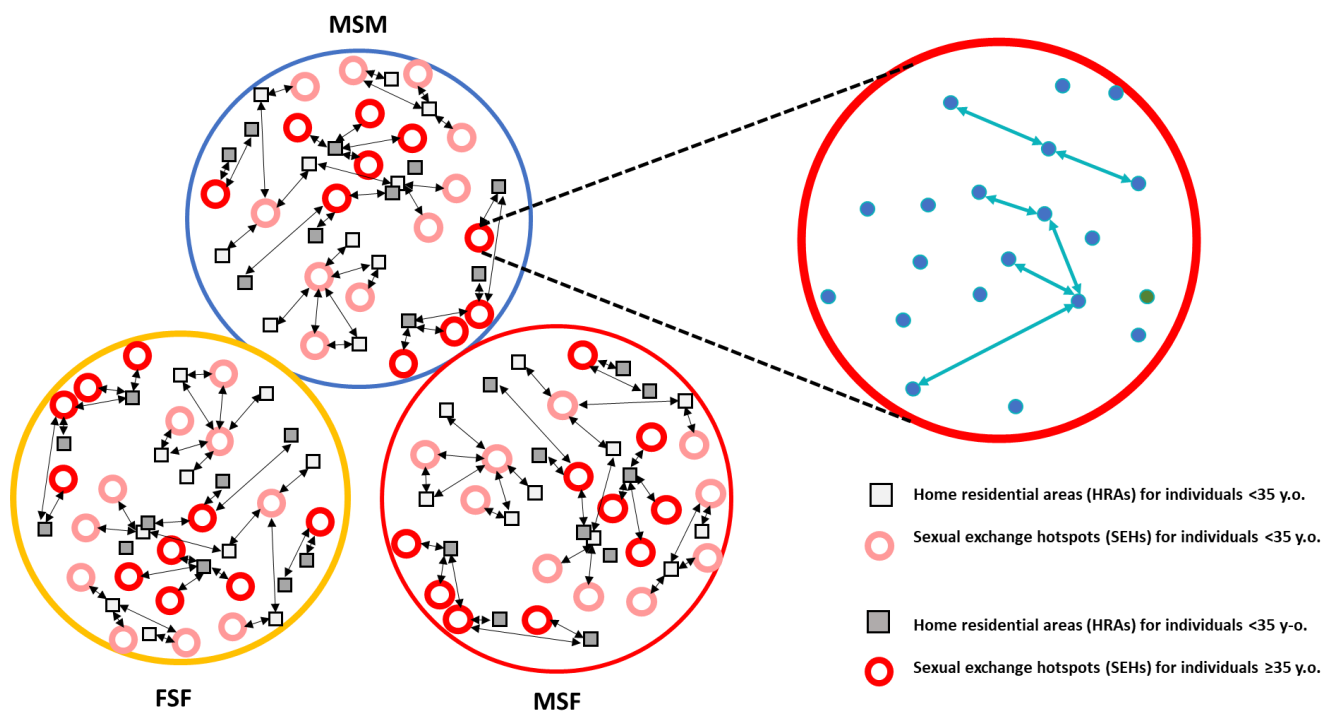
160 distinct SEH-*n* locations corresponding to these 3 networks (e.g., SEH-01-MSM, SEH-01-FSF,  
161 SEH-01-MSF; SEH-02-MSM, SEH-02-FSF, SEH-02 MSF, and so on). In the basic model, half  
162 of the SEHs in each network are predominantly visited by those <35 years of age, and the other  
163 half by older individuals. Each individual can visit from 0-3 SEHs per day. In each network,  
164 we distinguished 14 mobility patterns (MPs), expressing the probability for an individual to  
165 visit a particular SEH within their network. For instance, individuals moving according to MP-  
166 06 have a 50% probability of going to SEH-06 and a 50% probability of going to SEH-07 in  
167 his/her network. If the individual following MP-06 is an MSF, he will visit SEH-06 and SEH-  
168 07 of the MSF network with these probabilities. If he is an MSM, he will visit SEH-06-MSM  
169 and SEH-07-MSM of the MSM network with these probabilities. In one of the variants of the  
170 basic scenario presented in this study, an individual from one age group visits a SEH  
171 corresponding to younger or older individuals with a probability of 10%. In the following  
172 sections we present the epidemiological parameters used in the basic model; however, we insist  
173 that most of these values can be modified by the user to mimic specific local situations. A  
174 depiction of the theoretical model is presented in Figure 1.

175

176

177





178

179 **Figure 1. Schematic representation of the theoretical simulation's basic model.** The 3  
180 circles on the left correspond with the 3 basic sexual contact networks determined by sexual  
181 preference (MSF, males having sex with females; MSM, males having sex with males; and  
182 FSF, females having sex with females). Black arrows indicate the movements from residential  
183 areas (HRAs) to sexual exchange hotspots (SEHs). On the right, a detail of a particular SEH  
184 (corresponding to MSM  $\geq 35$ ) with the individuals represented in blue dots, and their sexual  
185 interactions in green arrows.

186

187 **Epidemiological parameters for *C. trachomatis* infection and lymphogranuloma**  
188 **venereum used in the basic model**

189 **In individuals of <35 years of age**, in *symptomatic patients* (having symptoms during the  
190 infection period), there is an incubation period of approximately 10 days; during this period,  
191 the patient does not transmit the infection to other partners. Next, the patient has 4 pre-  
192 symptomatic days (days 10-14 after contagion), followed by mild symptoms lasting for 12 days,  
193 during which the infected person can transmit the microorganism; then comes a period of  
194 moderate-severe symptomatology lasting for 15 days, during which sexual activity is

195 substantially decreased or discontinued and contagion does not take place. When the patient is  
196 under therapy (30 days for *C. trachomatis* or lymphogranuloma venereum [LGV]) and in the  
197 post-therapy period (10 days) we do not consider any possibility of contagion to other  
198 individuals. Globally, we estimate that in patients aged <35 years there is a 40% probability of  
199 having an asymptomatic disease (19pc). In these *asymptomatic patients*, the non-contagious  
200 phase of incubation is also 10 days, followed by 75 days during which, because of the absence  
201 of symptoms, contagion is possible. The natural disappearance of contagion occurs within the  
202 following 10 days.

203 **In individuals  $\geq 35$  years of age**, there is a 40% probability of asymptomatic infection. In the  
204 *symptomatic patients*, after a 10-day non-contagious incubation period, the individual enters in  
205 a pre-symptomatic period for 5 days (days 10-15), followed by a phase with mild symptoms  
206 lasting for 15 days, during which the patient can potentially transmit the *C. trachomatis*  
207 infection. Then, there is a period of moderate-severe symptomatology lasting for 20 days,  
208 during which sexual activity is substantially decreased or suspended, and contagion to other  
209 individuals does not take place. When the patient is diagnosed and receives therapy (30 days,  
210 see above), and in the post-therapy period (10 days) there is no contagion. *In asymptomatic*  
211 *patients*, the early non-contagious phase (incubation period) is also 10 days, followed by 100  
212 days during which patients are unaware of their infection and contagion is possible. Within the  
213 successive 10 days, when the infection naturally disappears, the individual becomes non-  
214 contagious.

215 Parameter ranges consider the European STI epidemiology (18gm), which is based on  
216 diagnosed cases; the number of asymptomatic cases can only be estimated. These data indicate  
217 higher peak *C. trachomatis* infections among women <35 (approximately 340/100,000) than in  
218 males of this age group (approximately 160/100,000). In Europe, LGV cases, caused by

219 invasive *C. trachomatis* serotypes, are almost exclusively detected in MSM (approximately  
220 35/100,000, slightly more in those  $\geq 35$  than in younger individuals). For the purposes of this  
221 study, our basic model is focused on the *C. trachomatis* STI in the group of MSF  $< 35$ , whereas  
222 LGV is considered associated with the MSM population  $\geq 35$ .

### 223 **Epidemiological parameters for *N. gonorrhoeae* infection used in the basic model**

224 In the case of *N. gonorrhoeae* infections, we distinguish epidemiological parameters between  
225 individuals  $< 35$  and those  $\geq 35$ , male and female, and considering their sexual orientation. As  
226 in the former case of *C. trachomatis* infections, a critical point in the epidemiology is the  
227 proportion of symptomatic versus asymptomatic cases.

228 **In the male population aged  $< 35$**  infected by *N. gonorrhoeae*, we considered in our basic  
229 model that asymptomatic cases account for 20% of MSF, 40% of bisexual MSF/MSM, and  
230 55% of MSM. In these asymptomatic patients, and after the 3-day incubation period, the patient  
231 is contagious for the next 38 days. Contagion does not occur from 10 days following the  
232 spontaneous cure of the infection.

233 *Symptomatic cases* have a 3-day incubation period, 4 pre-symptomatic non-contagious days,  
234 then 4 days during which symptoms are mild and contagion could take place. During the next  
235 period, with typical symptomatology lasting for 4 days, the infected person does not transmit  
236 the infection because of the suspension of sexual activity. Standard therapy consists of a single  
237 intramuscular administration of cephalosporin. During the period in which antibiotic exposure  
238 reduces the symptomatology of the infection (11 days) sexual activity might occur; however,  
239 during this time and in the next post-antibiotic period (10 days), the patient is not considered  
240 contagious.

241 **In the male population  $\geq 35$  years of age**, the proportion of asymptomatic cases for the various  
242 sexual orientations is the same as in the population  $< 35$  (see above). *Symptomatic cases*,  
243 following a 3-day incubation period, enter into a contagious period encompassing 5 pre-  
244 symptomatic days and subsequently a 5-day mildly symptomatic phase. When typical  
245 symptoms appear, and during the next 5 days, contagion drops because of a strong reduction of  
246 sexual activity. Under the antibiotic effect influencing the evolution of the infection (next 2  
247 weeks), and for the following 10 days, the patient is not considered contagious. In  
248 *asymptomatic cases*, after 3 days of incubation, contagion from the patient to other individuals  
249 can occur during the next 50 days. Within 10 days after the natural resolution of the infection,  
250 the individual becomes non-contagious.

251 **In the female population  $< 35$  years of age**, we consider a high (80%) frequency of  
252 asymptomatic infection. *Symptomatic patients* have a 10-day incubation period, followed by 7  
253 days of early-phase, pre-symptomatic infection during which transmission can occur. During  
254 the following 7 days of mild symptomatology the patient is also contagious; when signs and  
255 symptoms are evident, and for 11 days, sexual activity is strongly reduced or suspended and  
256 transmission does not take place. During the period of antibiotic effect (14 days), and in the  
257 following 10 days, the patient is not considered contagious. *In asymptomatic patients*, after 10  
258 days of incubation time and during the following 45 days we consider that contagion to other  
259 individuals can take place; contagion ceases 10 days after spontaneous local clearance of the  
260 infection.

261 **In the female population  $\geq 35$  years of age**, as in the  $< 35$  group, there is an 80% probability  
262 of asymptomatic infection. In *symptomatic patients*, after a 10-day incubation period, the  
263 infected individual enters an 8-day pre-symptomatic phase and then an 8-day mildly  
264 symptomatic period; during these 16 days the patient is contagious. When typical symptoms

265 appear, sex is discontinued for 14 days; thus, the probability of transmission is near 0%. During  
266 antibiotic therapy (14 days) and 10 days after therapy there is no risk of contagion. In the  
267 *asymptomatic patients*, after the 10 days of incubation there is a prolonged period (60 days)  
268 during which the patient could transmit the infection, ending with the local clearance of *N.*  
269 *gonorrhoeae*; this non-contagious period begins within 10 days following infection clearance.  
270 Epidemiological parameter ranges consider the European STI epidemiology, based on  
271 diagnosed *N. gonorrhoeae* infection cases; the number of asymptomatic cases can only be  
272 estimated. Considering sexual orientation, we estimated a prevalence of infection among the  
273 male population <35 years of 170/100,000; in males  $\geq 35$  of 70/100,000; in females <35 of  
274 70/100,000; and in females  $\geq 35$  of 20/100,000. In our basic model, we focus on heterosexual  
275 individuals <35 and MSM <35.

#### 276 **STI co-occurrence in the model scenario**

277 In our current model, for simplicity, we consider that a patient who has acquired an STI (*C.*  
278 *trachomatis* or *N. gonorrhoeae*) cannot be infected again by the same microorganism during  
279 the simulation period. However, this possibility exists in the clinical setting (different *C.*  
280 *trachomatis* clones) and could be considered in further versions of our membrane computing  
281 models. In the present version, we consider that for a given STI in a symptomatic patient, the  
282 sexual interactions are suppressed and therefore they cannot acquire any new STIs.

#### 283 **Populations with protected sex, chemsex, and/or PrEP in the STI model scenario**

284 Protected sex refers to sexual activity during which a condom is used to protect against STIs.  
285 In our model, there is protected sex if either of the 2 sexual partners use condoms by their own  
286 initiative. We have explored 3 levels of protected sex: high-level usage (95% of sexual  
287 encounters), medium-level usage (50%), and low-level usage (5%). The probability of STI

288 contagion without protection was estimated for both genders at 22% for *C. trachomatis* and  
289 LGV. In *N. gonorrhoeae*, these probabilities are 55% for males and 38.5% for females. For  
290 both infections, the probability of contagion while using protection was always 5%.

291 Chemsex is the consumption of recreational drugs to facilitate or enhance sexual activity, such  
292 as methamphetamine, paramethoxyamphetamine, ketamine, mephedrone, gamma-  
293 hydroxybutyrate, cocaine, ecstasy, amyl-nitrite, and other compounds. PrEP consists of drugs  
294 taken to prevent HIV infection (most frequently tenofovir disoproxil-fumarate, lamivudine, and  
295 emtricitabine), which is associated with decreased condom use. In our model scenario, the  
296 proportion of only chemsex users is 23.6%; of daily PrEP 3%; of punctual (only in particular  
297 occasions) PrEP 1%; of PrEP plus chemsex 4.3% (1.7% if punctual PrEP); and the rest, non-  
298 users of either PrEP or chemsex 66.4%. In summary, the total proportion of chemsex users was  
299 29.6%, and of PrEP 10%.

300 Visiting a SEH is frequently associated with the decision to use chemsex and/or PrEP. We  
301 considered in the simulation model that such usage would increase the possibility of acquiring  
302 an STI by 25% in chemsex consumers, with or without PrEP, and approximately 20% in  
303 punctual PrEP users, without chemsex. Among individuals not using PrEP or chemsex, high-  
304 medium-low protection frequency was estimated to occur in 40%, 30%, and 30%, respectively.  
305 In the case of individuals with early infection belonging to the bisexual, continuous PrEP user,  
306 and chemsex user groups, the high-medium-low sexual protection levels were 30%, 30%, and  
307 40%, respectively. Considering the entire population, the high-medium-low protection user rate  
308 was 36.60%, 29.93%, and 33.48%, respectively (mean data from various parallel simulations).  
309 Integrating all modeled values for each sexual encounter, there was an expected possibility of  
310 using protection in 76.4% of cases, and having sex without protection in 23.6%.

311 The reduction in the infected population by protection depends on the STI and gender of the  
312 infected patient. For *C. trachomatis* infection, the contagion probability with protection is 5%  
313 of sexual encounters; without protection, 22% in both males and females. For *N. gonorrhoeae*  
314 infection, in males the contagion probability with and without protection is 5% and 55%,  
315 respectively; in females, the corresponding figures are 5% and 38.5%, respectively. Note that  
316 sexual encounters outside sexual hotspots have an estimated risk for STI infection of 0.001%  
317 between partners of the same age group and 0.0000001% between individuals belonging to  
318 different age groups. Individuals not visiting sexual hotspots were not considered in this study.

### 319 **Individual host mobilities for visiting sexual encounter hotspots in the STI model scenario**

320 In our simulation we differentiated 4 out-of-home mobility patterns (groups) for hosts seeking  
321 sex, according to the relative proportion of individuals and the daily possibility of such mobility  
322 during the week, considering a choice of 3 possible mobilities (with sexual contacts) per day.  
323 Group 1 (30% of the individuals) had a 40% possibility of mobility from Monday to Thursday,  
324 80% on Friday, and 80% over the weekend; group 2 (50% of individuals) had a 20%, 60%, and  
325 60% probability, respectively; group 3 (10% of individuals) a 0%, 0%, and 10% probability,  
326 respectively; and group 4 (10% of individuals) a 60%, 20%, and 20% probability, respectively.  
327 Chemsex users had an additional 20% possibility of visiting a SEH. In other words, we  
328 considered in the model that each host had 3 daily attempts to leave the home to seek sex. For  
329 instance, an individual belonging to group 3 had a 10% probability during the weekend of  
330 leaving home to seek sex on the first day and a 10% probability of doing so on the second or  
331 third occasion on the same day; thus, if this host succeeded at each attempt they had a  
332 probability of 30% to accomplish *at least* one move seeking out-of-home sex over the week-  
333 end.

334 Our simulated population is located in 20 various HRAs, differing in the density of individuals  
335 visiting sexual hotspots. Therefore, the target sex-seeking population can leave home to visit  
336 60 different sexual encounter hotspots or SEHs where they can have sexual contact, possibly  
337 resulting in STI transmission. From each of the HRAs the individual can, according to their  
338 sexual orientation, attend a particular SEH (any of the 20) constituting a network for  
339 heterosexuals, 20 for male and 20 for female same gender sexual behavior). The probability of  
340 visiting a particular SEH is the product of 2 consecutive decisions: first, to attend a SEH;  
341 second, which to select, depending on sexual orientation (see Table 1). We consider in the  
342 model a total of 20 SEHs in each of the networks defined by the preferential type of sexual  
343 partner. Of these, the first half are mostly visited by hosts  $<35$  and the second half by those  $\geq 35$ .  
344 We can include cross-mobility among zones, defined by 2 main patterns: 1) 10% of the time,  
345 those  $<35$  visit older individuals' zones; and 2) 10% of the time, those  $\geq 35$  visit younger  
346 individuals' zones. Such variation was not included in the basic model, only in a particular  
347 variant of it (see the specific section below). Each of these patterns was studied in 3 separate  
348 networks, corresponding to heterosexuals and same-gender sex males and females (Figure 1).  
349 In Table S1 (Supplementary Material) we show 14 mobility patterns (MPs), representing the  
350 probabilities that a given individual from a given residency area will access a particular SEH in  
351 20 different residencies in town (HRAs). We considered in the model that individuals sharing  
352 the same HRA would have similar mobility patterns (MPs) to neighbor SEHs. Conversely,  
353 contagion between neighbors of the same residency area (out of SEHs) occurs with much less  
354 probability. For example, in MP5, the individual in this residency area has a 25% probability  
355 of visiting SEH 4, 50% probability of visiting SEH 5, and 25% probability of visiting SEH 6.  
356 The simulated number and shared profiles of hosts from each residency (mobility pattern,  
357 residential area, sexual orientation, gender, and age group) are detailed in Table S2. For



358 instance, for *C. trachomatis* infection, we started in HRA-20 (MSF) with 10 infected  
359 individuals <35, 5 males and 5 females; for LGV, HRA-1 (MSM) had 10 infected individuals  
360  $\geq 35$ ; for *N. gonorrhoeae*, HRA-11 (MSM) had 10 infected individuals <35; and in HRA-14  
361 (MSF), there were 10 MSFs, with both genders equally represented.

362

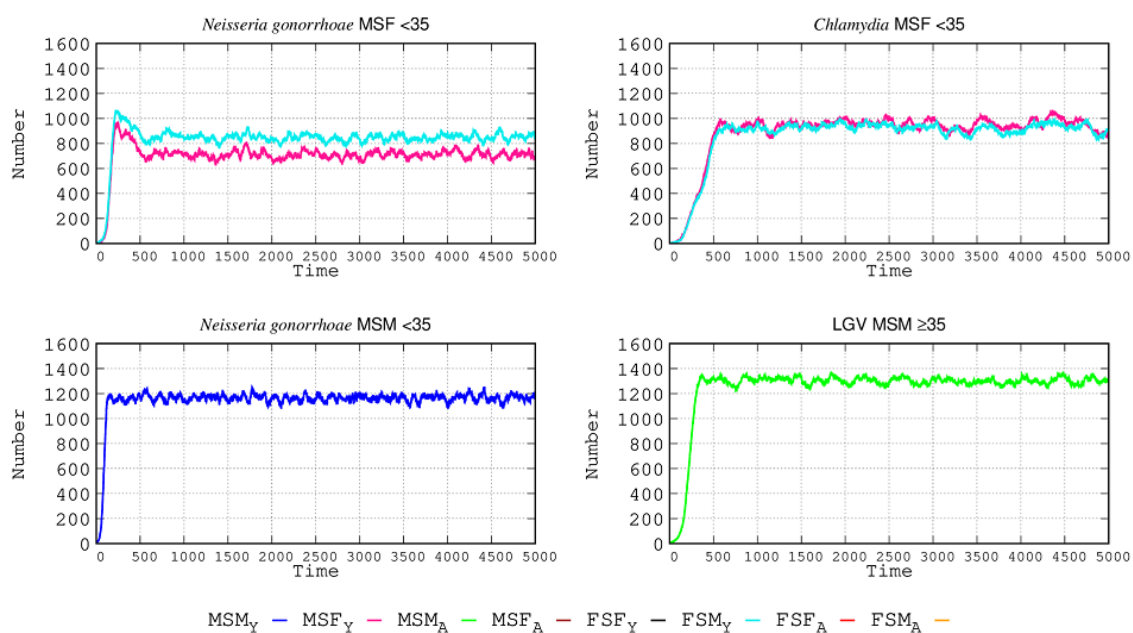
## 363 RESULTS

### 364 Evolution of STI numbers after introduction of infected people in sexual networks: basic 365 scenario

366 Figure 2 shows the evolution of contagion numbers over time for the 3 types of sexual networks  
367 as determined by sexual preference (MSM, FSF, and MSF), which are also subdivided  
368 according to age. In the graphs, each day is represented by 3 steps in the abscissa, so that 90  
369 steps correspond roughly to 1 month, and 1095 to a year. In total, 5000 steps are represented,  
370 approximately 4.5 years. The sexual behavior group with the highest number of cases is, as  
371 expected, the MSM <35 group (1300 cases for LGV, 1200 for *N. gonorrhoeae*, and 900 for *C.*  
372 *trachomatis*).

373 Given that the sexual networks were separated by age in our simulation, there was no cross  
374 contagion. The increase in contagion occurs more rapidly in *N. gonorrhoeae* than in *C.*  
375 *trachomatis*. In the MSF population <35, the frequency of infected females <35 (light blue  
376 line) surpasses that of the males <35 (red line), which can be attributed to more frequent sub-  
377 symptomatic infection, and also the increased length of infection in comparison with males,  
378 both symptomatic and asymptomatic. The initial peak in *N. gonorrhoeae* is reduced once *C.*  
379 *trachomatis* infections reach a maximum number, which is higher than in *N. gonorrhoeae*;

380 patients with gonorrhea who acquire *C. trachomatis* reduce their sexual activity and become  
 381 less frequently infected. This is because, even if females have a higher proportion of  
 382 asymptomatic cases, it is compensated for by males who more frequently have sex without  
 383 protection. The frequency of gonorrheal disease among MSM <35 is much higher (58%) than  
 384 in the case of MSF <35. In the case of LGV, the number of infected individuals (all MSM  $\geq 35$ )  
 385 was even higher than the number of those with gonorrheal disease in MSM <35, and the slope  
 386 of the epidemic curve was steeper than for *C. trachomatis* infection in the MSF <35 population.  
 387 Once a maximum number of cases was reached, the number of infections leveled off over time.  
 388 Given that the MSF <35 group was exposed to 2 STIs (*N. gonorrhoeae* and *Chlamydia*), the  
 389 number of infected patients for each of the STIs is lower than that in the MSM <35 and MSM  
 390  $\geq 35$  groups.

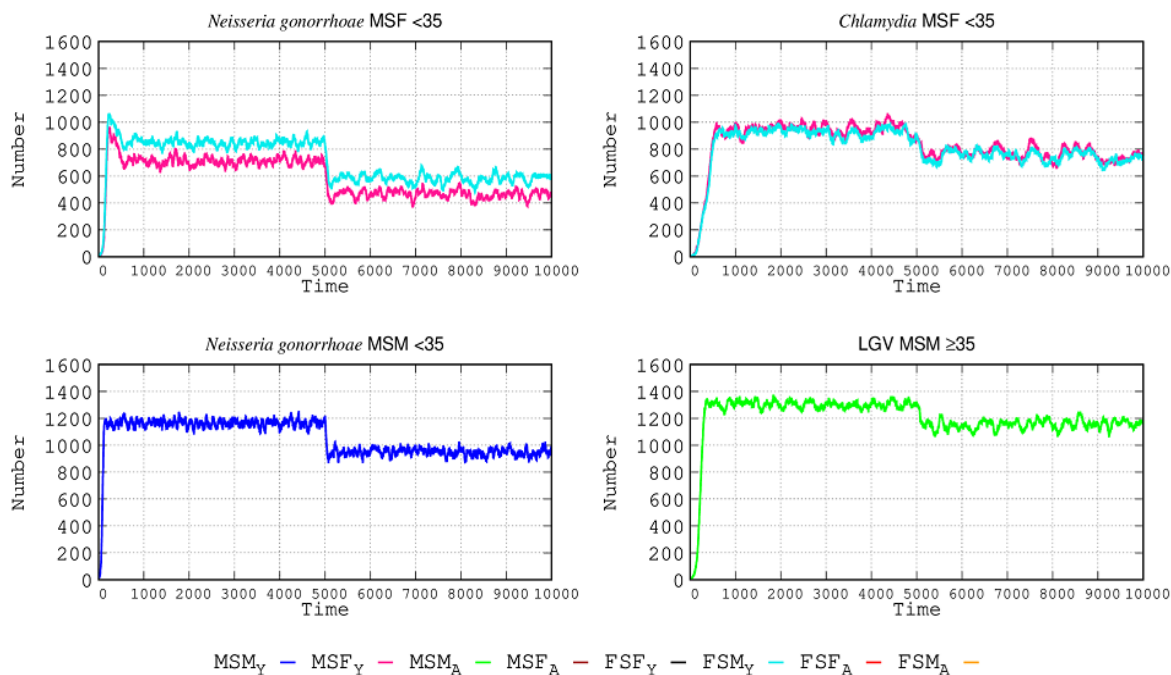


**Figure 2. STI epidemiology in the simulated populations.** Top panels: in the MSF group, males are represented in by the red line and females by the light blue line. Lower panels: in the MSM group the dark blue line corresponds to men <35 and green line to men  $\geq 35$ . Only the groups having infected cases are represented.

397

### 398 **The effect of increased STI protection tools**

399 In this new scenario, we increased the proportion of individuals using STI protection tools (such  
400 as condoms). High-level usage increased from 36.60% to 56.40%, medium-level usage was  
401 reduced from 29.93% to 19.92%, and low-level usage decreased from 33.48% to 23.68%.  
402 Considering all values, in this new scenario there is an 87.55% probability per sexual encounter  
403 of using protection (12.45% non-using). The effect of protection changes with the various STIs  
404 and sexual behaviors is shown in Figure 3, where the effect of the increase in protection tools  
405 at step 5000 is represented. In MSF interactions this increase reduces the *N. gonorrhoeae*-  
406 infected patients by 35% in females and 43% in males <35. Reduction in the MSM population  
407 <35 was lower, at 21%. For *C. trachomatis* infection, in sexual relations among MSFs <35, the  
408 reduction is much lower than in the case of *N. gonorrhoeae*, at only 20%. The number of  
409 lymphogranuloma cases in males  $\geq 35$  was only reduced by 10% after the increase in protective  
410 tools. For both types of *Chlamydia* infections, the reduction in the number of cases after an  
411 intervention with higher protection takes longer to occur than in the case of *N. gonorrhoeae*,  
412 due to the higher transmission rate of *N. gonorrhoeae*: the higher the transmission rate, the  
413 greater the effectiveness of protection.



414

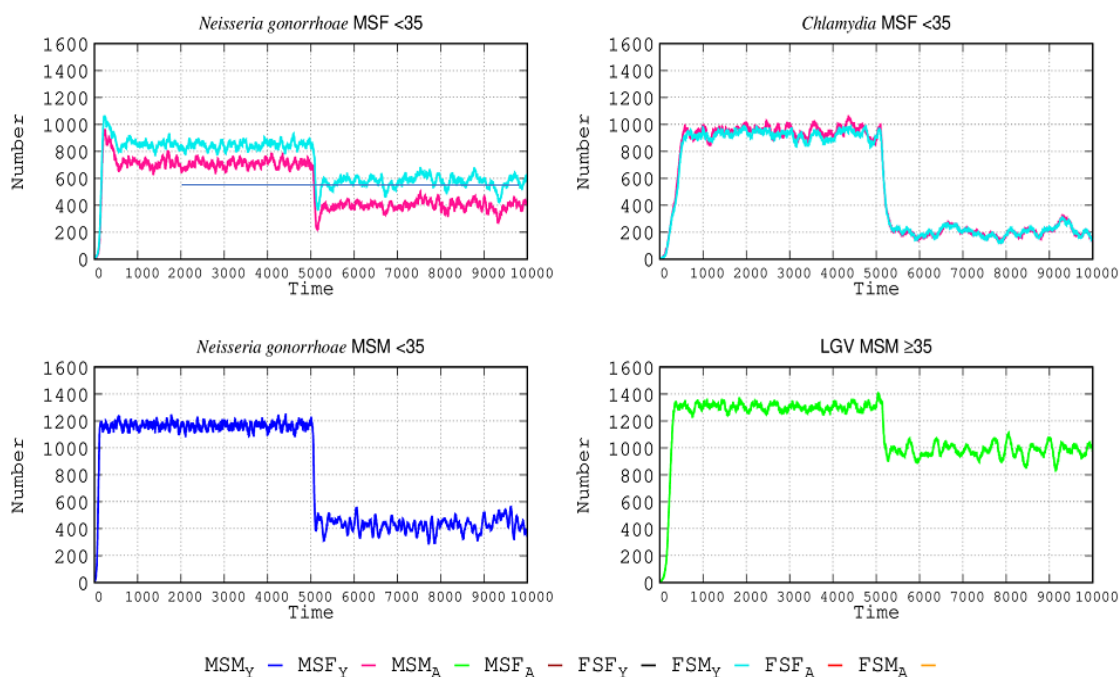
415 **Figure 3: Effect of protective tool use in STI epidemiology.** The use of protective tools  
 416 (such as condoms) was increased (see text for details) in the simulated populations at step  
 417 5000, producing a drop in the number of infected cases, of varying intensities for the different  
 418 STIs. Color lines should be interpreted as in Figure 2.

419

420 **The effect of asymptomatic cases in STI epidemiology: the need for a more efficient**  
 421 **diagnosis**

422 The most useful epidemiological interventions are based on rapid detection of infection. One  
 423 of the most significant problems in controlling the transmission of STIs is the high frequency  
 424 of subclinical (but transmissible) infections, given that the absence of symptomatology impedes  
 425 interrupting sexual contacts and seeking the etiological agent and specific therapy.  
 426 Consequently, STIs continue spreading among individuals visiting SEHs. To quantify this  
 427 effect, we considered the hypothetical case of full diagnosis (no asymptomatic cases), the  
 428 results of which are shown in Figure 4. For the case of *N. gonorrhoeae*, full awareness of the  
 429 infection was expected to reduce the number of cases in MSF-FSM <35 by 42% in males and

430 27% in females. The decrease in number of *N. gonorrhoeae*-infected individuals in the MSM  
 431 population was much higher at 66%. For *C. trachomatis* infection, the MSF-FSM-infected  
 432 population <35 could be reduced by 90%, given that this STI is frequently asymptomatic. For  
 433 LGV in the MSM population  $\geq 35$ , the number of cases could be reduced by 26%. The reason  
 434 is that the higher the proportion of asymptomatic cases in a given STI, the more potentially  
 435 efficacious is the implementation of the diagnosis. With a full diagnosis, the number of  
 436 *Chlamydia* infections decreases more than the number of LGV cases. This decrease can be  
 437 explained because *Chlamydia* and *N. gonorrhoeae* infections are both present in the MSF <35  
 438 group; when asymptomatic patients are detected, these patients suppress their sexual activity,  
 439 reducing the number of infections more than in groups exposed to a single STI.



**Figure 4. The weight of asymptomatic cases in STI epidemiology.** At step 5000, a hypothetical intervention making the detection of asymptomatic cases possible is implemented. In each curve, the left side corresponds to the number of cases with the various STIs in the baseline model study; the right side corresponds to the number of cases if a full diagnosis of

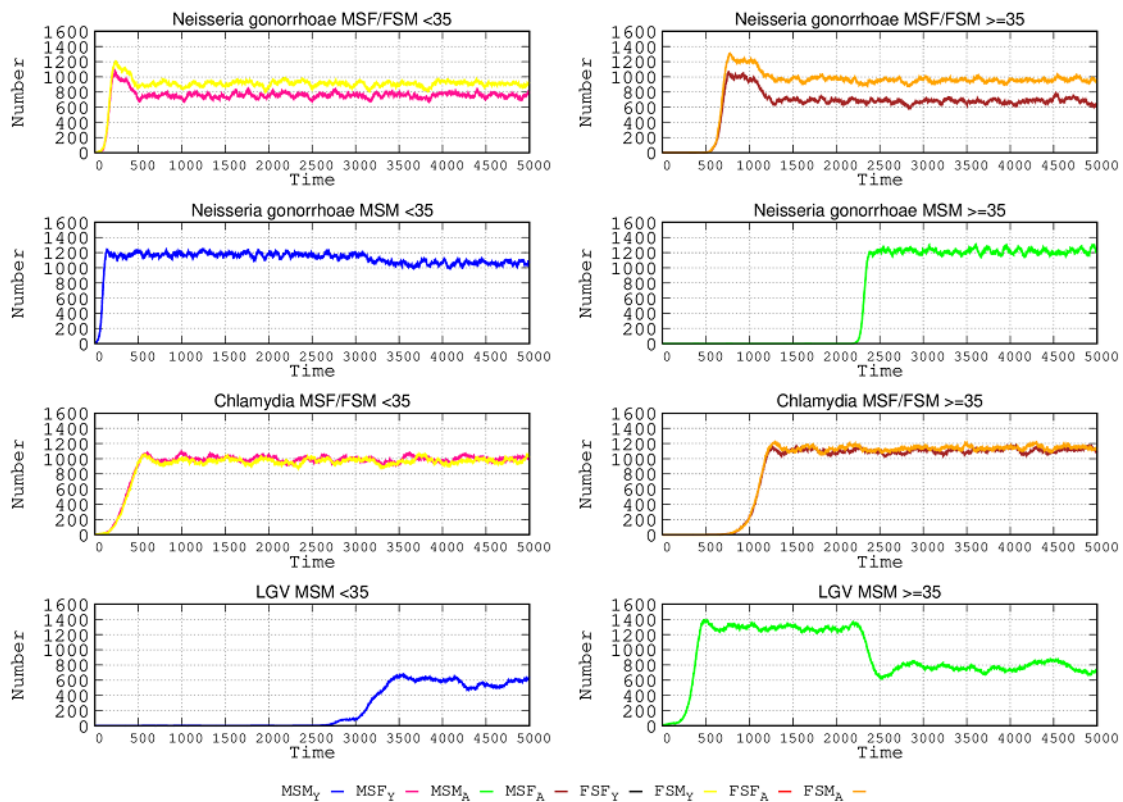
446 infections were possible, detecting and removing asymptomatic cases. Color lines should be  
447 interpreted as in Figure 2.

448

### 449 **The effect of sexual contact between populations of different ages in the SEHs**

450

451 In this variant from the basic scenario, individuals aged  $<35$  and  $\geq 35$  years enter into sexual  
452 exchanges, with some people  $<35$  having contact with those  $\geq 35$  and vice-versa. In this case,  
453 each SEH might constitute meeting points for individuals of different ages, contributing to the  
454 STI contagion between them. The frequency of trans-age contact is 10% of the movements for  
455 those both  $<35$  and  $\geq 35$ , including equal numbers of MSF, MSM, and FSF. The number of  
456 trans-age acting individuals is in fact very scarce in the model, with a total of 8 individuals (4  
457 males and 4 females), and for each gender the 4 types of individuals are represented: MSM or  
458 FSF  $<35$ ; MSM or FSF  $\geq 35$ ; MSF  $<35$ ; and MSF  $\geq 35$ . The results are shown in Figure 5. In  
459 these trans-age exchanges, individuals from certain groups introduce STIs to other groups,  
460 mostly MSF and MSM  $<35$  disseminating *N. gonorrhoeae*; MSF ( $<35$ ) causing *Chlamydia*  
461 contagion; and LGV spreading by those  $\geq 35$ . We can observe that when 2 different STIs are  
462 acquired by individuals of different ages, due to the more promiscuous exchange the absolute  
463 number of contagions for a given STI might decrease. The reason is that when in a given age  
464 group a new STI is acquired, the number of STIs compete for the same hosts, so that the absolute  
465 number of each STI decreases, not the total number of STIs. For instance, when LGV strains  
466 enter the MSM  $<35$  population (blue line) after contact with MSM  $<35$  in the  $\geq 35$  individuals'  
467 SEH network, the number of *N. gonorrhoeae* infections decreases; similarly, when *N.*  
468 *gonorrhoeae* enters the MSM  $\geq 35$  population, LGV contagions decrease (green lines).



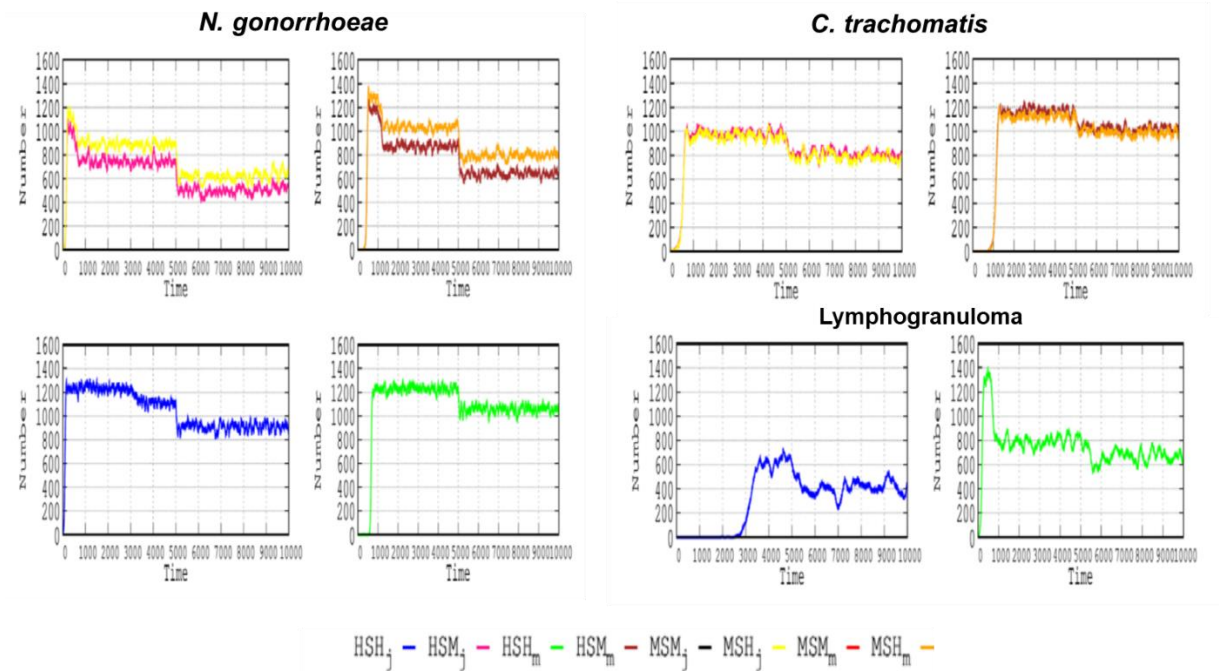
469

470 **Figure 5. Influence of sexual contact between different age groups in SEHs.** Left column:  
 471 individuals <35; right column, individuals  $\geq 35$ , visiting SEHs corresponding to  $\geq 35$  and <35,  
 472 respectively. In each row, either the left or the right panel is the group that starts the infection.  
 473 The groups initiating the infection in the other age group are, in these examples, for *N.*  
 474 *gonorrhoeae*, the groups MSF <35 and MSM <35; for *C. trachomatis*, MSF <35; and for LGV,  
 475 MSM  $\geq 35$ .

476

477

478 How do protective measures (such as condoms) influence the spread of STIs in this open  
 479 scenario, in which individuals belonging to different age groups visit the SEHs that correspond  
 480 to the other ages? As in the specific section (see above) about the effects of protection in the  
 481 basic scenario, the model considers a protective probability per sexual encounter of 87.55%  
 482 when using protection. Results are presented in Figure 6.



483

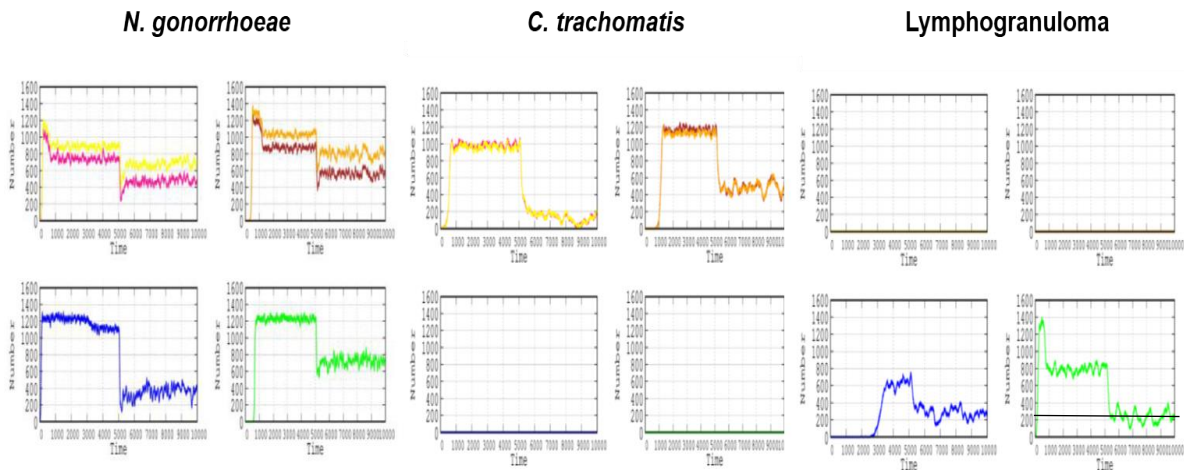
484 **Figure 6. Effect of protection measures in a scenario where individuals in different age**  
 485 **groups have sexual relations in SEHs.** In each box, the first 5000 steps correspond to the  
 486 scenario where inter-age interactions are allowed and protection is not applied; during the  
 487 second steps, protection measures are enhanced. For each STI, the left and right boxes  
 488 correspond to the populations aged <35 and  $\geq 35$ .

489

490 In this trans-age contact landscape, for the case of *N. gonorrhoeae*, in the <35 MSF population,  
 491 the decrease of infections associated with protective measures accounted for 44% in males and  
 492 33% in females; the protective effect was lower in those  $\geq 35$ , 40% in males and 26% in females.  
 493 In the MSM population, protection leads to a lower reduction, a 17% decrease in the number of  
 494 cases in individuals <35, and of only 14% among those  $\geq 35$ . For *C. trachomatis* in the MSF  
 495 population <35, infections were reduced by 19% in both males and females; in the  $\geq 35$  group,  
 496 the reduction was lower, 13% for both genders. In the case of LGV involving MSM, protection  
 497 provided a reduction of 36% in the <35 group and 13% in the  $\geq 35$  group. As noted in a previous  
 498 section, the benefit of using protective measures is higher in the more transmissible STIs (such  
 499 as *N. gonorrhoeae*).



500 The next question to analyze in this scenario of inter-age relations in SEHs is how the complete  
501 diagnosis, eliminating non-detected asymptomatic individuals, could affect the number of STI  
502 cases. The results of our simulation are presented in Figure 7.



503

504 **Figure 7. Effect of efficient diagnostic procedures in a scenario in which individuals in**  
505 **different age groups have sexual relations in SEHs.** For each STI, the left and right columns  
506 correspond respectively to the  $<35$  and  $\geq 35$  populations and the MSF (first row) and MSM  
507 (second row) populations. Improvement in the efficacy of diagnosing asymptomatic cases is  
508 applied at step 5000.

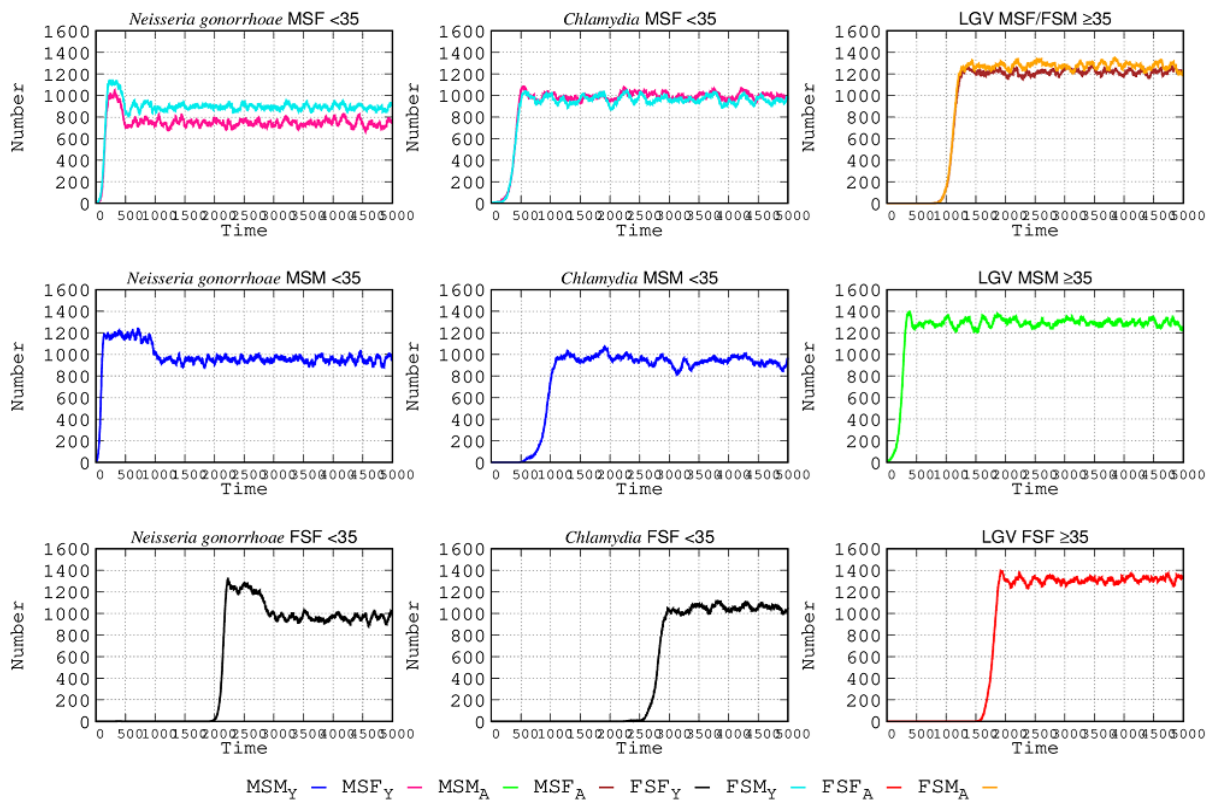
509

510 Improved diagnosis of *N. gonorrhoeae* infections has an important but lesser effect than  
511 protective tools in MSF populations, potentially reducing the number of cases in 33% and 28%  
512 of males and females  $<35$ , respectively. In the groups aged  $\geq 35$ , the reduction is lower: 24%  
513 for both males and females. Much more important is the effect of diagnosis in MSM  
514 populations, in which the expected reduction is 66% and 52% for the  $<35$  and  $\geq 35$  groups,  
515 respectively. Our simulation clearly shows that the benefit of detection of asymptomatic  
516 patients by applying efficient diagnostic tools could substantially reduce the number of *C.*  
517 *trachomatis* infections, much more than protective measures do. In the MSF population, the  
518 number of cases could be reduced 92% for both genders, and to a lesser extent, 58%-56% (males  
519 and females) in the  $<35$  and  $\geq 35$  age groups, respectively. Lastly, for LGV, precise diagnosis

520 of asymptomatic cases could also be highly beneficial in the MSM population, reducing the  
521 number of cases by 52% and 62% in the <35 and  $\geq 35$  age groups, respectively. As was shown  
522 in the basic scenario, the effect of full diagnosis, eliminating non-detected asymptomatic  
523 individuals, is more visible in infections with high rates of asymptomatic cases. Moreover,  
524 inter-age movements have increased the number of individuals with more than one STI, and  
525 therefore a full diagnosis is more effective.

### 526 **The role of the bisexual population**

527 In this simulation, a bisexual male is an MSM-MSF with 50% of his movements visiting MSF  
528 or MSM hotspots. For example, visiting hotspots where MSM dominate, and thus able to  
529 propagate STIs from MSF or MSM hotspots to other MSF and MSM encounter zones. A  
530 bisexual female is an FSF-FSM potentially attending all SEH types, including those where MSF  
531 or FSF are more prevalent, and thus able to propagate the STI from MSF and MSM hotspots to  
532 MSF and FSF zones. In the simulation presented here, these bisexual persons have an MP-2  
533 movement pattern.



534

535 **Figure 8. Effect of bisexual shuttlers in STI epidemiology.** At the start of the simulation,  
 536 bisexual individuals primarily belonging to the MSF and MSM <35 population serve to transmit  
 537 *N. gonorrhoeae*; the MSF population <35 propagates *Chlamydia*; and bisexual MSM  $\geq 35$   
 538 contribute to LGV contagion.

539

540 The changes in the present scenario with respect to the basic model (Figure 2) are because STIs  
 541 cannot be transmitted directly from MSM and FSF populations in the basic model, requiring  
 542 contagion through the MSF heterosexual population. For instance, in Figure 8, the  
 543 lymphogranuloma infection originating in MSM enters the MSM-FSM circuit, and from there  
 544 to the FSF group of individuals. Progressively, STIs start to produce combined contagions in  
 545 the same type of populations (because of the bridge provided by bisexuals); for instance, *N.*  
 546 *gonorrhoeae* and *C. trachomatis* originally infecting the MSF population <35 propagate  
 547 successively to MSM <35 and later to FSF. In *N. gonorrhoeae*, the introduction of bisexuals in

548 fact increases the number of infections in the MSF group by 8% in females and 10% in males  
549 when compared with the basic scenario (Figure 2). Something similar occurs for *C. trachomatis*  
550 infection, with increases of 2% in females and 10% in males. No detectable increase in the  
551 number of cases occurs among MSM either for *C. trachomatis* or LGV. The most important  
552 consequence of the introduction of bisexuals in the SEHs is the contagion of groups that were  
553 spared in our basic simulation, such as females in MSF  $\geq 35$ , and particularly in the  $<35$  FSF  
554 circuit, reaching high numbers of infected individuals, particularly by LGV, followed by *C.*  
555 *trachomatis* and *N. gonorrhoeae* (Figure 8).

556

## 557 **DISCUSSION**

558

559 Social change and its consequent effects on human behavior is a critical factor in the  
560 epidemiology of infectious diseases. In our society, the exponential growth of hosts' mobility  
561 is an essential factor contributing to the spread of infectious diseases (20so, 21mk). During the  
562 last century, but particularly in recent decades, there might be no better illustration of social  
563 change than the sexual revolution (22gj, 23ms). This revolution mostly spread in Western  
564 countries, probably grounded in fundamental economic development and consumerism,  
565 changes in traditional sexual morality, and its replacement by rights derived from sexual  
566 citizenship (the recognition of the individual right to sexual self-determination, also applied to  
567 others). All this has been facilitated by the massive and transcultural use of mass media favoring  
568 sexual encounters and use of sexual activity enhancers (chemsex), as well as by "security"  
569 advances in prevention (PrEP) and STI therapies (24mj, 25bd, 26pr, 27bj, 28fa), as well as the  
570 development of hormonal contraception. In our simulation, we have shown how breaking

571 sexual exchange barriers between age groups and regarding sexual behaviors, as in the case of  
572 bisexuals, greatly facilitates the spread of STIs in those visiting SEHs.

573 Progressive societal atomization, based on the reduction of traditional social connections, has  
574 been compensated for by the proliferation of multicultural public spaces providing the  
575 possibility to enjoy the space with multiple people (29lj). This enhanced mobility strongly  
576 facilitates the spread of collective sex and sexual interactions between multiple configurations  
577 of gender and age. The cultural expansion of sexual limits is also an expansion in the limits of  
578 microbial transmission, and a cause for the dissemination of infectious diseases (30bf).

579 Our simulation allows us to analyze with an unprecedented level of detail the epidemiological  
580 dynamics of STIs when various SEHs are available. It should be noted that the results presented  
581 were obtained in a particular “simulation space,” under parameters that can be changed by the  
582 program’s user at will. Consequently, the model does not pretend to reflect the general  
583 quantitative reality of STIs, but it provides useful information about the relative burden of the  
584 various bacterial infections in the different populations of the various sexual orientations  
585 visiting SEHs, and regarding the outcomes of adopting interventions. In essence, there are a  
586 number of factors that decrease the number of STIs in all studied populations.

587 First, increasing use of protective measures, such as condoms. This intervention is effective in  
588 reducing *N. gonorrhoeae* infection by approximately 35% and 44% in males and females,  
589 respectively, in the <35 MSF population. Such reduction is lower (21%) in the MSM population  
590 of the same age group. The efficacy in decreasing *C. trachomatis* infections is much lower,  
591 decreasing *N. gonorrhoeae* infections in MSF <35 by only 20%. Protection is also limited in  
592 reducing the number of cases of LGV in males  $\geq 35$ , by only 10%. In addition, for both types of  
593 *Chlamydia* infections, the application of increased protection takes longer to show an effect

594 than in the case of *N. gonorrhoeae*. Easy availability of protective measures and creating an  
595 extended culture of condom use are indeed useful interventions. When MSFs visit a different  
596 age-related SEH the protective effect for *N. gonorrhoeae* is increased by 22% and 32% in  
597 females and males, respectively, in MSF <35. Similarly, protection lowers the number of cases  
598 in the MSM  $\geq 35$  population by 11%. In the case of *C. trachomatis* in the MSF population <35,  
599 the reduction in number of cases was only 12%, and for those  $\geq 35$  only 8%. Lastly, for LGV  
600 infection, the number of cases in MSM  $\geq 35$  was only reduced by 10% after the increase in  
601 protective tools. Low rates of reduction could be associated with more frequent STI circulation  
602 with possible reinfections in this particular population. A significant proportion of female LGV  
603 infections are oropharyngeal and thus less controllable by condom protection.

604 Second, improvements in diagnostic screening. The number of STIs is proportional to the  
605 number of asymptomatic cases, given that these cases do not reduce or interrupt their sexual  
606 contacts since they are unaware of their illness. If we were able to detect all *N. gonorrhoeae*  
607 infections early, educating, and treating the patients, the number of cases would be reduced in  
608 the <35 MSF population by 42% in males and 27% in females. The decrease in the number of  
609 *N. gonorrhoeae*-infected individuals in the MSM population was much higher, at 66%. For *C.*  
610 *trachomatis* infection, cases in MSF <35 could be reduced by 90%, given that this STI is  
611 frequently asymptomatic. For LGV in MSM  $\geq 35$ , the reduction in the number of cases could  
612 be decreased by 26%, a proportion compatible with that found by universal testing of rectal  
613 *Chlamydia* in MSM (31hy). Recent advances in visualization and rapid procedures for detection  
614 (less than 1 hour) of the *ompA* and *orf1* genes of *C. trachomatis* and *N. gonorrhoeae*,  
615 respectively, are promising to detect infection without need for sophisticated equipment (32cx).  
616 Decentralization of screening procedures resulting from the organization of community points  
617 of care could be a useful strategy to implement such diagnostic needs.

618 Third, the possible future protective role of vaccination and antibiotic prevention therapy  
619 (33hb). Although the possibility of delivering a multi-pathogen vaccine against STIs could be  
620 a promising approach, it is much more developed for viruses than for bacteria. Recent findings  
621 suggest that *N. gonorrhoeae* infection might be prevented with meningococcal B vaccine  
622 (34bk). In *C. trachomatis* vaccination, using antigens (most probably MOMP, and/or Pmps,  
623 CPAF, and Pgp3), perhaps in combination with adjuvants, might reduce transmission (35dl,  
624 36as). The possible effect of vaccination can be easily tested in our membrane computing  
625 model, as we previously did with SARS-CoV-2 (16). Single postexposure dosing of oral  
626 antimicrobials, such as doxycycline (and probably macrolides and fluoroquinolones), in high-  
627 risk encounters could decrease STI incidence (37mj). However, the benefits versus the risk of  
628 antibiotic resistance developing if such a practice is frequently applied should be evaluated.  
629 Again, our simulation model could help to assess the appropriateness of such interventions.

630 Fourth, the role of education to reduce STIs, both for self protection and as a support for the  
631 health of the community. Indeed, the all the above-mentioned interventions directed to decrease  
632 STIs are fully dependent on greater awareness of the benefits of preventing *N. gonorrhoeae* and  
633 *C. trachomatis* infections, which might result, if untreated, in severe complications, including  
634 ectopic pregnancy and infertility, fetal infection, and premature delivery (38fc). Certainly,  
635 increasing awareness and achieving a change in habits is difficult. Sexual behaviors interact  
636 with psychological factors; thus, their modification requires psychosocial interventions (39fu).  
637 The possibility that each individual (at least in those visiting SEHs) could have a personal on-  
638 line “risk score” (based on behavioral profile, clinical symptoms, and laboratory tests), such as  
639 in the form of an interactive computer counseling tool, might be useful (40ms). Such an  
640 approach might be combined with “sexual risk behavior scales” (41fe). A condition for the  
641 success of such strategies the “risk score” becoming part of social norms (42ka), collectively

642 demanded and accepted by sexual partners and SEH communities at large (43mc). In pursuing  
643 such an objective, trends provided by membrane computing simulation, such as those presented  
644 in this work, can provide invaluable contributions, including providing material for  
645 extracurricular sexual education (44rm).

646 Lastly, we should be aware that STIs have deeply infiltrated our society, frequently as  
647 asymptomatic, hidden, or unsuspected diseases. All health services providing care to the  
648 population should recall here the concept of “missed opportunities,” coined by Fauci and  
649 Marston when examining the possibilities of controlling sexually transmitted HIV infection  
650 (45fa). These opportunities refer to the many encounters between patients with STIs and the  
651 health services for any reason (such as in emergency departments) that do not result in a  
652 diagnosis (46mz). Knowledge provides opportunities for action. Such knowledge might feed  
653 models simulating endo-epidemics in defined landscapes, which could predict the usefulness  
654 of targeted interventions.

655 There are few available mathematical modeling approaches to deal with the complex problem  
656 of STI epidemiology (a complex epidemiology involving various pathogens), considering the  
657 roles of the various sexual orientations and behaviors among genders and age groups, the  
658 hotspots for sexual exchanges and the individual frequentation, the role of asymptomatic  
659 patients, the influence of chemsex and PRePs, and the use of protective measures. The standard  
660 susceptible-infected-susceptible (SIS) mathematical model was used in the few existing studies  
661 (47gg). In fact, the compatibility of competitive exclusion and coexistence of different STIs,  
662 also shown in our model, had been proposed long ago using SIS modeling (48cg). Recently,  
663 SIS models have incorporated stochastic networks to include asymptomatic individuals and  
664 some of the above-mentioned variables, and, as in our model, personal sexual initiatives; the  
665 general conclusions are primarily consistent with ours, particularly on the benefits of diagnostic



666 screening and protective measures (49fk). Other modeling studies have used non-linear  
667 fractional derivatives with the aim of projecting into the future the possible “maximum peak”  
668 of *Chlamydia* epidemics on the basis of cumulative available data in the United States (50vm).  
669 However, most of these studies do not reach level of detail of the model presented in this work,  
670 showing the possibilities of modeling by membrane computing to allow advances and evaluate  
671 interventions in this field.

672

### 673 **ACKNOWLEDGMENTS**

674 In the case of FB, this study was partially funded by the Fundación del Conocimiento Madri+d  
675 from the Madrid Autonomous Community through research contracts (AVATAR-EPAMEC)  
676 within the Health Start Plus Program of the European Union. For JCG, he was supported by  
677 the Instituto de Salud Carlos III (ISCIII), PI20/01397, co-funded by the European Union; and  
678 also by the Spanish Network CIBERESP (CB06/02/0053).

679

680

### 681 **REFERENCES**

682

- 683 1. Van Gerwen OT, Muzny CA, Marrazzo JM. 2012. Sexually transmitted infections and  
684 female reproductive health. *Nat Microbiol* 7:1116-1126.
- 685 2. World Health Organization. 2022. Global health sector strategies on, respectively,  
686 HIV, viral hepatitis and sexually transmitted infections for the period 2022-2030.  
687 Geneva: World Health Organization. Licence: CC BY-NC-SA 3.0 IGO.
- 688 3. King, J, McManus, H, Kwon, A, Gray, R, McGregor, S. 2022. HIV, viral hepatitis and  
689 sexually transmissible infections in Australia: Annual surveillance report 2022, The  
690 Kirby Institute, UNSW Sydney, Sydney, Australia.
- 691 4. European Centre for Disease Prevention and Control. Chlamydia infection. 2022. In:  
692 ECDC. Annual epidemiological report for 2019. Stockholm.

- 693 5. Farfour E, Dimi S, Chassany O, Fouéré S, Valin N, Timsit J, Ghosn J, Duvivier C,  
694 Duracinsky M, Zucman D DRIVER study group. 2021. Trends in asymptomatic STI  
695 among HIV-positive MSM and lessons for systematic screening. *PLoS One*.  
696 16:e0250557.
- 697 6. Hornhill JP, Barkati S, Walmsley S, Rockstroh J, Antinori A, Harrison LB, Palich R,  
698 Nori A, Reeves I, Habibi MS, Apea V, Boesecke C, Vandekerckhove L, Yakubovsky  
699 M, Sendagorta E, Blanco JL, Florence E, Moschese D, Maltez FM, Goorhuis A,  
700 Pourcher V, Migaud P, Noe S, Pintado C, Maggi F, Hansen AE, Hoffmann C, Lezama  
701 JI, Mussini C, Cattelan A, Makofane K, Tan D, Nozza S, Nemeth J, Klein MB, Orkin  
702 CM. 2022. SHARE-net Clinical Group. Monkeypox virus infection in humans across  
703 16 Countries - *N Engl J Med*. 387:679-691.
- 704 7. Curran KG, Eberly K, Russell OO, Snyder RE, Phillips EK, Tang EC, Peters PJ,  
705 Sanchez MA, Hsu L, Cohen SE, Sey EK, Yin S, Foo C, Still W, Mangla A, Saafir-  
706 Callaway B, Barrineau-Vejjajiva L, Meza C, Burkhardt E, Smith ME, Murphy PA,  
707 Kelly NK, Spencer H, Tabidze I, Pacilli M, Swain CA, Bogucki K, DelBarba C,  
708 Rajulu DT, Dailey A, Ricaldi J, Mena LA, Daskalakis D, Bachmann LH, Brooks JT,  
709 Oster AM; Monkeypox, HIV, and STI Team. 2022. HIV and sexually transmitted  
710 infections among persons with monkeypox - eight U.S. Jurisdictions. *MMWR Morb*  
711 *Mortal Wkly Rep* 71:1141-1147.
- 712 8. Hoenigl M, Little SJ, Grelotti D, Skaathun B, Wagner GA, Weibel N, Stockman JK,  
713 Smith DM. 2020. Grindr users take more risks, but are more open to human  
714 immunodeficiency virus (HIV) pre-exposure prophylaxis: could this dating app  
715 provide a platform for hiv prevention outreach? *Clin Infect Dis* 71:e135-e140.
- 716 9. Algarin AB, Shrader CH, Hackworth BT, Ibanez GE. 2022. Condom use likelihood  
717 within the context of PrEP and TasP among men who have sex with men in Florida: a  
718 short report. *AIDS Care*. 34:294-300.
- 719 10. Ayerdi Aguirrebengoa O, Vera García M, Arias Ramírez D, Gil García N, Puerta  
720 López T, Clavo Escribano P, Ballesteros Martín J, Lejarraga Cañas C, Fernandez  
721 Piñeiro N, Fuentes Ferrer ME, García Lotero M, Hurtado Gallegos E, Raposo Utrilla  
722 M, Estrada Pérez V, Del Romero Guerrero J, Rodríguez Martín C. 2021. Low use of  
723 condom and high STI incidence among men who have sex with men in PrEP  
724 programs. *PLoS One* 16:e0245935.
- 725 11. Spicknall IH, Pollock ED, Clay PA, Oster AM, Charniga K, Masters N, Nakazawa YJ,  
726 Rainisch G, Gundlapalli AV, Gift TL. 2022. Modeling the impact of sexual networks  
727 in the transmission of monkeypox virus among gay, bisexual, and other men who have  
728 sex with men - United States, 2022. *MMWR Morb Mortal Wkly Rep* 71:1131-1135.
- 729 12. Pérez-Jimenez MJ, Romero-Jiménez A, Sancho-Caparrini F. 2003. Complexity classes  
730 in models of cellular computing with membranes. *Natur Comput* 2:265–285
- 731 13. Păun G, Rozenberg G, Salomaa A (ed.). 2010. *The Oxford Handbook of Membrane*  
732 *Computing*. Oxford University Press, Oxford, UK.

- 733 14. Campos M, Capilla R, Naya F, Futami R, Coque T, Moya A, Fernandez-Lanza V,  
734 Cantón, R, Sempere JM, Llorens C, Baquero F. 2019. Simulating multilevel dynamics  
735 of antimicrobial resistance in a membrane computing model. *mBio* 10: e02460-18.
- 736 15. Campos M, Sempere JM, Galán JC, Moya A, Llorens C, de-Los-Angeles C, Baquero-  
737 Artigao F, Cantón R, Baquero F. 2021. Simulating the impact of non-pharmaceutical  
738 interventions limiting transmission in COVID-19 epidemics using a membrane  
739 computing model. *microLife* 2.
- 740 16. Campos M, Sempere JM, Galán JC, Moya A, Cantón R, Llorens C., Baquero, F. 2022.  
741 Simulating the efficacy of vaccines on the epidemiological dynamics of SARS-CoV-2  
742 in a membrane computing model. *microLife* 3.
- 743 17. Gil-Gil T, Ochoa-Sánchez LE, Baquero F, Martínez JL. 2021. Antibiotic resistance:  
744 time of synthesis in a post-genomic age. *Comput Struct Biotech J* 19: 3110-3124.
- 745 18. Geretti AM, Mardh O, de Vries HJ, Winter A, McSorley J, Seguy N, Vuylsteke B,  
746 Gokengin D. 2022. Sexual transmission of infections across Europe: appraising the  
747 present, scoping the future. *Sex Transm Infect* 98, 451-457.
- 748 19. Patel CG, Trivedi S, Tao G. 2018. the proportion of young women tested for  
749 *Chlamydia* who had urogenital symptoms in physician offices. *Sex Transm Dis.*  
750 45:e72-e74.
- 751 20. Saucedo O, Tiene JH. 2022. Host mobility, transmission hotspots, and vector-borne  
752 disease dynamics on spatial networks. *Infect Dis Model* 7: 742-760.
- 753 21. Manlove K, Wilber M, White L, Bastille-Rousseau G, Yang A, Gilbertson MLJ, Craft  
754 M E, Cross PC, Wittemyer G, Pepin KM. 2022. Defining an epidemiological  
755 landscape that connects movement ecology to pathogen transmission and pace-of-  
756 life. *Ecol Lett* 25: 1760–1782.
- 757 22. Greenwood J, Guner N. 2010. Social change: The sexual revolution. *Intern Econom*  
758 *Rev* 51:893-923
- 759 23. Malhotra S. 2008. Impact of the sexual revolution: consequences of risky sexual  
760 behaviors. *J Am Phys Surg* 13: 88.
- 761 24. Martin JL 1996. Structuring the sexual revolution. *Theor Soc* 25:105-151
- 762 25. Bell D. 1995. Pleasure and danger: the paradoxical spaces of sexual citizenship. *Polit*  
763 *Geogr* 14:139-153.
- 764 26. Parker R. 2009. Sexuality, culture and society: shifting paradigms in sexuality  
765 research. *Cult Health Sex* 11:251-266).
- 766 27. Brown JD. 2002. Mass media influences on sexuality, *J Sex Res* 39:42-45
- 767 28. Flores Anato JL, Panagiotoglou D, Greenwald ZR, Blanchette M, Trottier C, Vaziri  
768 M, Charest L, Szabo J, Thomas R., Maheu-Giroux M. 2022. Chemsex and incidence

- 769 of sexually transmitted infections among Canadian pre-exposure prophylaxis (PrEP)  
770 users in the l'Actuel PrEP Cohort (2013-2020). *Sex Transm Infect* 98:549–556.
- 771 29. Liu J, Kim S. 2021. Space design guide for public areas in a multicultural  
772 environment: based on the theory of social atomism. *Arch Design Res* 34: 21-31.
- 773 30. Baquero F. 2020. Causality in biological transmission: forces and energies. p. 17-31.  
774 *In: Microbial Transmission*. Baquero F, Bouza E, Gutiérrez-Fuentes J., Coque TM.  
775 (Ed). ASM Press, Washington, DC.
- 776 31. Hughes Y, Chen MY, Fairley CK, Hocking JS, Williamson D, Ong JJ, De Petra V,  
777 Chow EPF. 2022. Universal lymphogranuloma venereum (LGV) testing of rectal  
778 chlamydia in men who have sex with men and detection of asymptomatic LGV. *Sex*  
779 *Transm Infect* 98:582–585.
- 780 32. Chen X, Zhou Q, Yuan W, Shi Y, Dong S, Luo X. 2023. Visual and rapid  
781 identification of *Chlamydia trachomatis* and *Neisseria gonorrhoeae* using multiplex  
782 loop-mediated isothermal amplification and a gold nanoparticle-based lateral flow  
783 biosensor. *Front Cell Infect Microbiol* 13:200.
- 784 33. Holt BY, Hemmerling A, Moore S, Yang K. 2023. Expanding the pipeline for  
785 multipurpose prevention technologies: compounds with potential activity to prevent or  
786 treat HIV and other STIs. *Sex Transm Infect* 99:203-207.
- 787 34. Bruxvoort KJ, Lewnard JA, Chen LH, Tseng HF, Chang J, Veltman J, Marazzo J,  
788 Qian L. 2023. Prevention of *Neisseria gonorrhoeae* with meningococcal B vaccine: a  
789 matched cohort study in Southern California. *Clin Infect Dis* 76:e1341-e1349.
- 790 35. de la Maza LM, Darville TL, Pal S. 2021. *Chlamydia trachomatis* vaccines for genital  
791 infections: where are we and how far is there to go? *Expert Rev Vaccines* 20:421-435.
- 792 36. Abraham S, Juel HB, Bang P, Cheeseman HM, Dohn RB, Cole T, Kristiansen MP,  
793 Korsholm KS, Lewis D, Olsen AW, McFarlane LR, Day S, Knudsen S, Moen K,  
794 Ruhwald M, Kromann I, Andersen P, Shattock RJ, Follmann F. 2019. Safety and  
795 immunogenicity of the chlamydia vaccine candidate CTH522 adjuvanted with CAF01  
796 liposomes or aluminium hydroxide: a first-in-human, randomized, double-blind,  
797 placebo-controlled, phase 1 trial. *Lancet Infect Dis* 19:1091–100.
- 798 37. Molina JM, Charreau I, Chidiac C, Pialoux G, Cua E, Delaugerre C, Capitant C,  
799 Rojas-Castro D, Fonsart J, Bercot B, Bébéar C, Cotte L, Robineau O, Raffi F,  
800 Charbonneau P, Aslan A, Chas J, Niedbalski L, Spire B, Sagaon-Teyssier L, Carette  
801 D, Le Mestre S, Doré V, Meyer L, Lorente M. 2018. Post-exposure prophylaxis with  
802 doxycycline to prevent sexually transmitted infections in men who have sex with men:  
803 an open-label randomised substudy of the ANRS IPERGAY trial. *Lancet Infect Dis*  
804 18:308-317.
- 805 38. Foschi C, Zagarrigo M, Belletti M, Marangoni A, Re MC, Gaspari V. 2020. Genital  
806 and extra-genital *Chlamydia trachomatis* and *Neisseria gonorrhoeae* infections in

- 807 young women attending a sexually transmitted infections (STI) clinic. *New Microbiol*  
808 43:115–120.
- 809 39. Ferrer-Urbina R, Mena-Chamorro P, Halty M, Sepúlveda-Páez G. 2022. Psychological  
810 factors and sexual risk behaviors: A multidimensional model based on the Chilean  
811 population. *Int J Environ Res Pub Health* 19: 9293.
- 812 40. Mackenzie SL, Kurth AE, Spielberg F, Severynen A, Malotte CK, Lawrence JS,  
813 Fortenberry JD. 2007. Patient and staff perspectives on the use of a computer  
814 counseling tool for HIV and sexually transmitted infection risk reduction. *J Adol*  
815 *Health* 40: 572-e9.
- 816 41. Fino E, Jaspal R, Lopes B, Wignall L, Bloxson C. (2021) The Sexual Risk Behaviors  
817 Scale (SRBS): development and validation in a university student sample in the  
818 UK. *Eval Health Prof*, 44:152-160.
- 819 42. Kinzig AP, Ehrlich PR, Alston LJ, Arrow K, Barrett S, Buchman TG, Daily GC,  
820 Levin, B, Levin S, Oppenheimer M, Ostrom E, Saari D. 2013. Social norms and  
821 global environmental challenges: the complex interaction of behaviors, values, and  
822 policy. *Bioscience* 63:164–175.
- 823 43. Masaro CL, Dahinten VS, Johnson J, Ogilvie G, Patrick DM. 2008. Perceptions of  
824 sexual partner safety. *Sex Transm Disease*, 35:566-571.
- 825 44. Reinholz M, Nellessen T, Wei E, Zippel S, Fuchs C, Kaemmerer T, Clanner-  
826 Engelshofen BM, Frommherz LH, Rummel M, French LE, Stadler PC. 2023. The  
827 effectiveness of an extra-curricular lecture for STI prevention and sexual education.  
828 *Epidemiol Infect* 151: e35.
- 829 45. Fauci AS, Marston HD. 2015. Focusing to achieve a world without  
830 AIDS. *JAMA*, 313, 357-358.
- 831 46. Most ZM, Warraich GJ, James L, Costello K, Dietz S, Lamb GS, Evans AS. 2021.  
832 Missed opportunity encounters for early diagnosis of HIV infection in  
833 adolescents. *Ped Infect Dis J*, 40: e106-e110.
- 834 47. Garnett GP. 2002. An introduction to mathematical models in sexually transmitted  
835 disease epidemiology. *Sex Transm Infect* 78: 7-12.
- 836 48. Castillo-Chavez C, Huang W, Li J. 1999. Competitive exclusion and coexistence of  
837 multiple strains in an SIS STD model. *SIAM J Appl Math* 59:1790–1811.
- 838 49. Frieswijk K, Zino L, Cao M. 2023. A time-varying network model for sexually  
839 transmitted infections accounting for behavior and control actions. *Int J Rob Nonl*  
840 *Contr*, 33:4784-4807.
- 841 50. Vellappandi M, Kumar P, Govindaraj V. 2023. Role of fractional derivatives in the  
842 mathematical modeling of the transmission of *Chlamydia* in the United States from  
843 1989 to 2019. *Nonl Dynam* 111:4915-4929.

844

845

846 **SUPPLEMENTARY MATERIALS**

847

848 **Table S1. Mobility probability patterns (14 MPs, in columns) to visit sexual exchange**  
 849 **hotspots (20 SEHs, in rows) corresponding to the various home residential areas (20**  
 850 **HRAs)**

<b>MPs</b>	<b>1</b>	<b>2</b>	<b>3</b>	<b>4</b>	<b>5</b>	<b>6</b>	<b>7</b>	<b>8</b>	<b>9</b>	<b>10</b>	<b>11</b>	<b>12</b>	<b>13</b>	<b>14</b>
<b>SEHs</b>														
<b>1</b>			<b>0.75</b>											
<b>2</b>			<b>0.25</b>	<b>0.5</b>										
<b>3</b>				<b>0.25</b>										
<b>4</b>				<b>0.25</b>	<b>0.25</b>									
<b>5</b>					<b>0.5</b>	<b>0.5</b>								
<b>6</b>					<b>0.25</b>	<b>0.5</b>	<b>0.5</b>							
<b>7</b>							<b>0.5</b>	<b>0.1</b>						
<b>8</b>								<b>0.4</b>						
<b>9</b>								<b>0.4</b>						
<b>10</b>	<b>0.9</b>	<b>0.1</b>						<b>0.1</b>						
<b>11</b>	<b>0.1</b>	<b>0.9</b>							<b>0.1</b>					
<b>12</b>									<b>0.4</b>					
<b>13</b>									<b>0.4</b>					
<b>14</b>									<b>0.1</b>	<b>0.5</b>				
<b>15</b>										<b>0.5</b>	<b>0.5</b>	<b>0.25</b>		
<b>16</b>											<b>0.5</b>	<b>0.5</b>		

17												0.25	0.25	
18													0.25	
19													0.5	0.25
20														0.75

851

852

853 **Table S2. Number of individuals from each of 20 home residential areas (HRAs) visiting**  
 854 **20 sexual hotspots accordingly with 14 mobility patterns (MPs)**

855

856 Example: In the first line of HRA01, MP03(Y) means that in HRA01 there are 5 MSF, 5  
 857 FSM, 60 MSM, and 30 FSF, all of them <35 years of age (Y), and all of them following the  
 858 mobility pattern 3 (MP3)

859

		<b>HRA01</b>			
		MSF-FSM		MSM-FSF	
		M	F	M	F
MP03(Y)		5	5	60	30
MP04(Y)		5	5	40	20
MP13(A)		5	5	120	60
MP14(A)		5	5	80	40
		<b>HRA02</b>			
		MSF-FSM		MSM-FSF	
		M	F	M	F
MP03(Y)		30	30	4	4
MP04(Y)		70	70	6	6
MP13(A)		80	80	6	6
MP14(A)		20	20	4	4
		<b>HRA03</b>			
		MSF-FSM		MSM-FSF	
		M	F	M	F
MP04(Y)		50	50	10	10
MP05(Y)		50	50	10	10
MP12(A)		50	50	10	10
MP13(A)		50	50	10	10
		<b>HRA04</b>			
		MSF-FSM		MSM-FSF	
		M	F	M	F
MP04(Y)		5	5	120	0
MP05(Y)		5	5	80	5
MP12(A)		5	5	120	0
MP13(A)		5	5	80	5

<b>HRA05</b>					
	MSF-FSM			MSM-FSF	
	M	F		M	F
MP05(Y)	5	5		0	150
MP06(Y)	5	5		5	50
MP11(A)	5	5		5	150
MP12(A)	5	5		0	50
<b>HRA06</b>					
	MSF-FSM			MSM-FSF	
	M	F		M	F
MP05(Y)	10	10		5	0
MP06(Y)	40	40		0	5
MP11(A)	40	40		5	0
MP12(A)	10	10		0	5
<b>HRA07</b>					
	MSF-FSM			MSM-FSF	
	M	F		M	F
MP06(Y)	100	100		10	10
MP07(Y)	100	100		10	10
MP10(A)	100	100		10	10
MP11(A)	100	100		10	10
<b>HRA08</b>					
	MSF-FSM			MSM-FSF	
	M	F		M	F
MP07(Y)	75	75		200	30
MP08(Y)	25	25		100	70
MP09(A)	75	75		200	40
MP10(A)	25	25		100	60
<b>HRA09</b>					
	MSF-FSM			MSM-FSF	
	M	F		M	F
MP07(Y)	50	50		50	200
MP08(Y)	50	50		50	100
MP09(A)	50	50		50	200
MP10(A)	50	50		50	100
<b>HRA10</b>					
	MSF-FSM			MSM-FSF	
	M	F		M	F
MP03(Y)	80	80		60	60
MP05(Y)	20	20		40	40
MP12(A)	80	80		60	60
MP14(A)	20	20		40	40
<b>HRA11</b>					
	MSF-FSM			MSM-FSF	
	M	F		M	F
MP03(Y)	140	60		140	50
MP05(Y)	60	40		60	50
MP12(A)	140	60		140	50



MP14(A)	60	40	60	50
			<b>HRA12</b>	
		MSF-FSM		MSM-FSF
	M	F	M	F
MP04(Y)	25	100	25	100
MP06(Y)	25	100	25	100
MP11(A)	25	100	25	100
MP13(A)	25	100	25	100
			<b>HRA13</b>	
		MSF-FSM		MSM-FSF
	M	F	M	F
MP04(Y)	25	25	10	10
MP06(Y)	75	75	10	10
MP11(A)	30	30	10	10
MP13(A)	70	70	10	10
			<b>HRA14</b>	
		MSF-FSM		MSM-FSF
	M	F	M	F
MP05(Y)	55	60	15	5
MP07(Y)	45	40	5	15
MP10(A)	45	45	15	15
MP12(A)	55	55	5	5
			<b>HRA15</b>	
		MSF-FSM		MSM-FSF
	M	F	M	F
MP05(Y)	5	5	180	5
MP06(Y)	5	5	20	0
MP10(A)	5	5	180	5
MP12(A)	5	5	20	0
			<b>HRA16</b>	
		MSF-FSM		MSM-FSF
	M	F	M	F
MP04(Y)	5	5	5	120
MP05(Y)	5	5	0	80
MP12(A)	5	5	5	120
MP13(A)	5	5	0	80
			<b>HRA17</b>	
		MSF-FSM		MSM-FSF
	M	F	M	F
MP04(Y)	5	5	100	5
MP05(Y)	5	5	100	0
MP12(A)	5	5	100	5
MP13(A)	5	5	100	0
			<b>HRA18</b>	
		MSF-FSM		MSM-FSF
	M	F	M	F
MP05(Y)	5	5	5	110
MP06(Y)	5	5	0	90

MP11(A)	5	5	5	110
MP12(A)	5	5	0	90
			<b>HRA19</b>	
		<b>MSF-FSM</b>		<b>MSM-FSF</b>
	<b>M</b>	<b>F</b>	<b>M</b>	<b>F</b>
MP04(Y)	0	0	200	100
MP05(Y)	100	100	100	200
MP06(Y)	100	100	100	100
MP11(A)	100	100	120	80
MP12(A)	100	100	120	80
MP13(A)	0	0	60	140
			<b>HRA20</b>	
		<b>MSF-FSM</b>		<b>MSM-FSF</b>
	<b>M</b>	<b>F</b>	<b>M</b>	<b>F</b>
MP03(Y)	300	280	0	0
MP05(Y)	130	100	20	15
MP07(Y)	100	100	20	25
MP10(A)	300	280	20	45
MP12(A)	130	100	20	45
MP14(A)	100	100	0	0

860

861

862

863