

1 **A quantitative systems pharmacology workflow towards op-** 2 **timal design and biomarker stratification of atopic dermatitis** 3 **clinical trials**

4 Natacha Go (PhD)¹, Simon Arsène (PhD)¹, Igor Faddeenkov (MSc)¹, Théo Galland (MSc)¹, Shiny Martis B. (PhD)¹,
5 Diane Lefaudeux (MSc)¹, Yishu Wang (PhD)¹, Loic Etheve (PhD)¹, Evgueni Jacob (MSc)¹, Claudio Monteiro (PhD)¹,
6 Jim Bosley (PhD)¹, Caterina Sansone (PharmD)², Christian Pasquali (PhD)², Lorenz Lehr (PhD)², and Alexander
7 Kulesza (PhD)¹

8 ¹Novartis, Lyon, France

9 ²OM Pharma, Meyrin, Switzerland

10 **Funding:** Novartis and OM Pharma funded this study.

11 **Abstract:**

12 *Background.* The development of atopic dermatitis (AD) drugs is confronted by many disease phenotypes
13 and trial design options, which are hard to explore experimentally.

14 *Objective.* Optimize AD trial design using simulations.

15 *Methods.* We constructed a quantitative systems pharmacology (QSP) model of AD and standard of care
16 (SoC) treatments and generated a phenotypically diverse virtual population whose parameter distribution is
17 a) derived from known relationships between AD biomarkers and disease severity and b) calibrated using
18 disease severity evolution under SoC regimens.

19 *Results.* We applied this workflow to the immunomodulator OM-85, currently being investigated for its
20 potential use in AD, and calibrated investigational treatment model with the efficacy profile of an existing trial
21 (thereby enriching it with plausible marker levels and dynamics). We assessed the sensitivity of trial outcomes
22 to trial protocol and found that for this particular example, a) the choice of endpoint is more important than
23 the choice of dosing-regimen and b) patient selection by model-based responder enrichment could increase
24 the expected effect size. A global sensitivity analysis reveals that only a limited subset of baseline biomarkers
25 is needed to predict the drug response of the full virtual population

26 *Conclusion.* This AD QSP workflow built around knowledge of marker-severity relationships as well as SoC
27 efficacy can be tailored to specific development cases so as to optimize several trial protocol parameters and
28 biomarker-stratification and therefore holds promise to become a powerful model-informed drug development
29 tool.

30 **Key Messages:**

- 31 • Disease and treatment models can quantify pre-existing knowledge about complex immune diseases
- 32 such as atopic dermatitis and drug's efficacy data under one common umbrella.
- 33 • Embedding QSP models into trial simulation setup can give insight into clinical trial optimization.
- 34 • Complex QSP models can help with patient selection and biomarker identification.

35 **Capsule Summary:** This study shows the relevance of QSP model and computer simulations in assisting
36 clinical development in the field of atopic dermatitis by assessing the impact of trial protocol on treatment
37 effect and guiding biomarker programs.

38 **Keywords:** Atopic dermatitis, Trial design, Trial optimization, Mathematical modeling, Biomarkers, Best
39 responder, In silico approaches, Immunomodulation, Bacterial lysates

40 **Abbreviations:**

41 AD Atopic dermatitis

42 SoC Standard of care

43 TCS Topical corticosteroids

44 ODE Ordinary differential equation

45 QSP Quantitative systems pharmacology

46 PBPK Physiologically based pharmacokinetic

47 PD Pharmacodynamics

48 AB Absolute benefit

49 SCORAD Scoring atopic dermatitis

50 EASI Eczema area and severity index

1 Introduction

Atopic dermatitis (AD) is a chronic inflammatory condition of the skin characterized by recurrent eczematous lesions and intense itch which can profoundly impair quality of life¹⁻⁶. The pathophysiology of AD is complex and involves local and systemic immune dysregulation, genetic susceptibility, environmental factors and microbiome effects^{7;8}. AD is not a homogeneous disease encompasses a variety of endotypes and phenotypes in the different age, ethnic, etc. groups (see the work cited in Facheris et al.⁹). The road to novel therapeutics¹⁰ is tortuous, due a combination of two factors:

- a) a partial understanding of the molecular and cellular mechanisms driving disease severity and treatment effect in individual patients^{11;12}, making it difficult to translate preclinical results into the clinic and even more so to estimate the quantitative effect in a given population.
- b) the complex clinical management of AD^{13;14} which opens many up many potential choices in trial design such as rules for rescue treatment or definition of induction or washout periods¹⁵.

Despite advancement in our understanding of epidemiology, biomarkers, endotypes, prevention, and comorbidities¹⁶ as well as *in vitro*, *in vivo* and *in silico* approaches developed for the investigation of human AD pathogenesis¹⁷, the precise relationships between intrinsic immunological features, extrinsic factors, disease severity and heterogeneous treatment effect remains to be established. *In silico* approaches based on mechanistic models can be powerful tools to explore trial design options^{18;19} in a context, such as AD, where high heterogeneity makes that, in addition to questions on protocol and dosing-regimen, the strategies involving patient selection, involving for example local or systemic biomarkers, are of utmost importance²⁰. There are several existing mathematical models for AD¹⁷, notably highlighting the importance of temporality in skin barrier function, immune responses, and impact of environmental stressors²¹ as well as the identification of effective biologic drugs combination for single-drug non-responders²². These studies have demonstrated that a systems modeling approach can help resolving mechanistic questions in AD drug development. Still, the question of how to quantitatively translate these insights into model-informed clinical

77 trial design remains open. Within model-informed drug development, QSP models are being
78 increasingly considered, both for internal and regulatory decision making²³. QSP - including within
79 a trial simulation paradigm - has produced numerous published examples and regulatory grade
80 evidence across disease areas where protocols and in particular the dosing-regimen aspects have
81 been informed^{23;24}, but the use of QSP for informing predictive biomarker programs have been
82 mostly limited to generating plausible dynamics of important biomarkers in different tissues and did
83 not yield quantitative and actionable information on clinical applications such as e.g. a biomarker
84 identification trial. This gap motivated us to combine a QSP modeling approach for an investigational
85 treatment in AD with a trial simulation strategy aiming at both, quantifying the relationship between
86 trial design options and the expected efficacy profiles while taking into account the patients' immune
87 profiles and thereby addressing biomarker related trial design choices.

88 In this work, we consider the investigational treatment OM-85 as a use-case. The oral im-
89 munomodulator OM-85 is a bacterial lysate which modulates the immune system notably by
90 restoring the Th1/Th2 balance²⁵ and is thus being investigated for various atopic conditions²⁶.
91 OM-85 is approved in several countries for the prevention of respiratory tract infections²⁷ and has
92 shown some promising results in pediatric AD as add-on treatment²⁸. It is now being tested for early
93 moderate AD in an ongoing trial (NCT05222516) where the immune heterogeneity of the included
94 population can represent a challenge. We developed a novel mechanistic model of skin immune
95 dysregulation in AD including the mechanisms of action of emollients and topical corticosteroids
96 (TCS), combined with a previously developed model of the administration, pharmacokinetics, and
97 mechanism of action of OM-85 (originally applied in combination with a multiscale respiratory tract
98 infection disease model²⁹). We calibrated this QSP model with quantitative relationships in skin
99 biomarkers³⁰⁻³⁵, clinical data for standard of care (SoC)^{22;36-39} and OM-85 treatment efficacy²⁸.
100 As a plausible application example, we used this QSP model to run trial simulations for virtual AD
101 populations in order to obtain both patient- and trial protocol-specific predictions of drug efficacy
102 profiles. We found that trial efficacy is expected to be insensitive to the exact dosing regimen but
103 can display sensitivity with respect to choice of severity endpoint (relative vs absolute), which thus

104 appears to be an option for further trial optimization. We then show how a dimensionality reduction
105 approach can be used to inform a biomarker-based stratification strategy: global sensitivity analysis
106 identifies a reduced number of baseline biomarkers in the virtual population, that reproduce the
107 reference data well, and thus can be used to select patients based on their predicted treatment effect.
108 We finally show that in the chosen use case, both protocol design and patient selection with results
109 of the model do show optimization potential and therefore may ultimately support decisions about
110 clinical (predictive) biomarker programs.

111 **2 Methods**

112 **2.1 QSP workflow: combining systems immunology and trial simulations**

113 Our QSP workflow (modeling and simulation approach) is based on a knowledge and mechanism-
114 driven mathematical model focusing on the immunology of AD, built on the back of a system of
115 ordinary differential equations (ODEs) and used in a setup to simulate clinical trials (also referred
116 to as a quantitative disease-drug-trial model⁴⁰ or *in silico* clinical trials). A virtual population
117 approach captures between-patient variability, where model parameters are described by statistical
118 (co)distributions rather than scalar values.

119 **2.2 QSP model description**

120 The QSP model (Fig. 1) can be broken down into three components: a) the disease model describing
121 the skin barrier integrity and the immune system and linking baseline biomarkers levels to AD sever-
122 ity scores, b) the SoC treatment models accounting for the administration and mechanisms of action
123 of emollients and TCS, and c) the investigational treatment model describing the administration,
124 pharmacokinetics, and mechanism of action of OM-85. The disease model focuses on selected
125 quantitative aspects of skin immune dysregulation in patients with AD while not taking into account
126 pathogenesis or natural evolution of AD. This allowed us to consider that, without treatment, the
127 disease state of a given patient with a given AD severity can be characterized by stationary dynamics
128 of the biological entities. Under treatment however, the stationary immune dynamics of the disease
129 model (*i.e.* at baseline) are perturbed and the AD severity evolves. The calibration of the QSP
130 model was performed following the core approach for complex disease-treatment-trial models with
131 heterogeneous data as described in Palgen et al.⁴¹.

132 **2.2.1 Atopic dermatitis disease model**

133 The disease model covers the main mechanisms at the cellular scale involved in the modulation of the
134 skin barrier integrity and immune dysregulation in response to environmental stressors. In particular,

135 it captures the mechanisms driving the dynamics of the major biomarkers of AD lesional skin
 136 including filaggrin, *S. aureus* in the skin microbiome, and major soluble immune biomarkers (mainly
 137 cytokines and chemokines characterizing the type-1, 2, 17, 22, and regulatory responses). While
 138 for typical pharmacometrics analyses, the principle of parsimony guides the selection of the model
 139 structure⁴², our mechanistic model is complex and combines a heterogenous set of information from
 140 different sources. Its architecture consists of a system of ODEs representing the dynamics of 21
 141 variables and involves 139 parameters (Fig. 1, Supplementary Information S1.1).

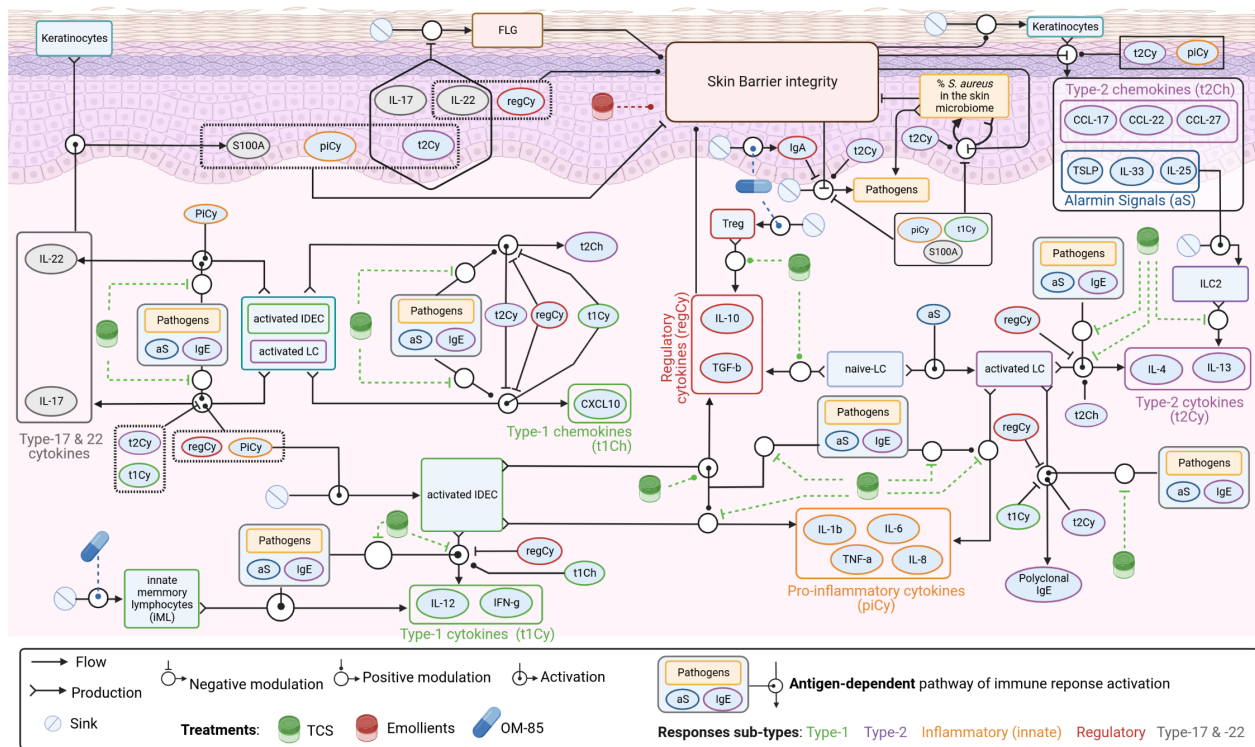


Figure 1. QSP model schematic. Exhaustive representation of the interplay between the skin barrier and the skin immune system as formalized in the AD disease model, mechanisms of actions of SoC treatments (TCS and emollients) and the investigational treatment OM-85.

142 The main mechanisms included in the disease model can be summarized as follows. The skin
 143 barrier integrity is modulated by filaggrin levels⁴³, harmful *S. aureus* colonization^{6;44}, and skin
 144 immune dysregulation^{6;44-49}. In return, conjointly with immune dysregulation, skin barrier integrity
 145 modulates the level of pathogen infiltration⁵⁰⁻⁵² and determines the production of alarmins (TSLP,
 146 IL-25, IL-33). Alarmins activate the innate immune response, notably Langerhans cells (LC) and

147 inflammatory epidermal dendritic cells (IDEC),^{47;52–54} both in antigen-independent and -dependent
148 pathways (via alarmins or specific IgE, respectively)^{55;56}. Both LC and IDEC synthesize innate
149 pro-inflammatory factors (IL-1 β , IL-6, TNF- α , IL-8)^{53;56} as well as type-17/22 immunity proteins
150 (IL-17, IL-22, and S100A)^{43–45;48;57}. Activated LCs – in context of AD⁵³ – induce the polarization
151 of the adaptive response towards type-2 (represented by IL-4, IL-13 and IgE) through the production
152 of type-2 chemokines (CCL-17, CCL-27 and CCL-22), while IDEC polarize it towards type-1
153 (represented by IL-12 and IFN- γ) through the production of type-1 chemokines (CXCL-10)⁵⁶. The
154 interconnected feedback loops of the type-1 vs type-2 response converge to an overall type-2 skewing
155 in AD, which in return is mixed with growing type-1 response with increasing AD severity^{53;56;57}. In
156 AD context, regulatory cytokines (IL-10 and TGF- β) are produced by regulatory T cells (Treg) and
157 dendritic cells (naive LC and activated IDEC with high level of Fc ϵ RI on their cell surface)^{47;53;56;58}
158 and limit the innate inflammation as well as type-1 and type-2 responses^{44;58;59}. AD severity
159 (evaluated with SCORAD⁶⁰ and EASI⁶¹) is phenomenologically linked to the level of skin barrier
160 integrity and pathogen infiltration²².

161 We make the fundamental assumption that, without treatment, the disease model represents
162 the skin immune system at equilibrium ([Supplementary Information S1.2.1](#)). By computing and
163 applying the mathematical conditions for equilibrium, we are able to derive a large number of
164 parameters (reducing the set of free parameters from 113 to 23, [Supplementary Information S1.2.1](#),
165 [Supplementary Information Table S7](#)). We can therefore inform the steady-state values of the
166 thirteen biomarkers included in the model as a function of AD severity for individual patients based
167 on a collection of datasets from the literature ([Supplementary Information S1.2.2](#), [Supplementary](#)
168 [Information Table 4](#)). Note that the entire dynamic system is still underinformed meaning that there
169 are still parameters for which several values satisfy the conditions for equilibrium. For this reason
170 it is important to also constrain the dynamical behavior upon perturbation of the equilibrium, i.e.
171 under treatment (where target engagement and pathway modulation will drive this system out of
172 equilibrium) as described in what follows.

173 **2.2.2 Standard of care treatment model**

174 The SoC treatment comprises a combination of emollients and different TCS (Fig. 1). The appli-
175 cation of emollient ameliorates the skin barrier integrity^{3;62;63} while TCS inhibit type-1, type-2
176 and pro-inflammatory responses and amplify the regulatory response by modulating respective
177 cytokines^{64–68}. We disregarded topical drug pharmacokinetics by considering a standardized
178 bioavailable concentration throughout a day of treatment regardless of duration of application,
179 dosage and intra-daily frequency. We also neglected the potential systemic effects given the very low
180 systemic absorption of modern TCS^{69;70}. We calibrated the SoC treatments against an aggregated
181 dataset of 5 studies accounting for various combinations and potencies ([Supplementary Informa-](#)
182 [tion S1.2.3, Supplementary Information Table S6](#)). The set of calibrated parameters include those
183 driving SoC mechanisms of action but also those controlling AD pathophysiology left undetermined
184 after applying equilibrium constraints ([Supplementary Information Table S7](#)). Finally, we used
185 the placebo arm (only emollients + TCS) reported in our reference dataset for the investigational
186 treatment (Bodemer et al.²⁸) to assess the robustness of model prediction for SoC treatments.

187 **2.2.3 Investigational treatment (OM-85) model**

188 For OM-85 administration and effect, we re-used the model reported in Arsène et al.²⁹ where, as
189 described in the context of respiratory tract infections prophylaxis, the oral administration of OM-85
190 triggers the activation and proliferation in the intestinal Peyers Patches of reprogrammed type-1 in-
191 nate memory like cells^{71–73}, regulatory T-cells^{74–76} and polyclonal IgA producing plasmablasts^{77;78},
192 which further disseminate via the systemic circulation into the inflamed lung tissues, due to the
193 presence of chemokines and homing receptors. In the context of AD, the fundamental hypothesis is
194 that that similar cells infiltrate the inflamed skin tissues (the gut-skin axis as a central mechanistic
195 hypothesis), which is backed up notably by many reports of co-expression of gut, skin and lung
196 tissue homing markers^{52;58;79;80} and is consistent with the reported effect of OM-85 in AD²⁸. To
197 take this hypothesis into account, the model reported in Arsène et al.²⁹ is supplemented with a layer
198 describing skin-homing of activated immune effectors (Fig. 1, [Supplementary Information Figure](#)

199 S1).

200 **2.3 Analyses**

201 **2.3.1 Treatment effect**

202 The treatment effect can be quantified *in silico* by the individual absolute benefit (AB, see Boissel
203 et al.⁸¹) which is defined as the difference of SCORAD at 6 months for a specific virtual patient
204 with placebo vs when treated (in our idealized clinical setting each virtual patient can be its own
205 control).

206 **2.3.2 Average treatment effect**

207 The average treatment effect is the group equivalent of treatment effect, defined as the difference of
208 the mean severity score at 6 months in the placebo vs treatment arm (\overline{AB} , see e.g. Bodemer et al.²⁸).
209 We obtain confidence intervals around predicted values by using a bootstrapped approach (using 100
210 samples, each with 85 virtual patients for the placebo and for the treatment arms). For the sensitivity
211 assessment of the trial results with respect to the choice of main endpoint, we used four alternative
212 definitions for the average treatment effect, either based on SCORAD, EASI, relative SCORAD
213 or relative EASI. For relative SCORAD or EASI, the difference in severity scores at 6 months is
214 normalized by the mean severity score at 6 months in the placebo arm.

215 **2.3.3 Power and sample size**

216 We compute empirical statistical power through bootstrapping⁸² using Students t-test (alpha risk
217 = 0.05) for various sample sizes. This allows us to estimate the required sample size to reach a
218 statistical power of 0.80([Supplementary Information S.1.4](#)).

219 **2.3.4 Recruitment effort**

220 We define recruitment effort as the total number of patients to be screened given selection criterion:
221 we compute it by dividing the estimated sample size for the corresponding selection criteria by the

222 percentage of virtual patients matching the selection criteria in the reference virtual population, for
223 which the distribution of patient characteristics is assumed to be realistic.

224 3 Results

225 3.1 Reproduction of a placebo-controlled clinical trial

226 In order to quantitatively align our QSP model with a specific clinical development case, we adapted a
 227 simulation and analysis protocol to represent an existing trial (Bodemer et al.²⁸ [NCT05222516]) and
 228 used the reported efficacy profiles to calibrate the remaining undetermined parameters (controlling
 229 the effect of OM-85). This simulation protocol corresponds to a placebo-controlled parallel two-arm
 230 AD trial for a virtual population of pediatric subjects treated with OM-85 for 9 months and assessing
 231 AD severity (SCORAD) during the study (Table 1). In order to match the longitudinal efficacy data
 232 for OM-85, we calibrated the three parameters controlling the effects of immune effectors activated
 233 by OM-85 against the average evolution of disease severity in the treatment arm (all the other model
 234 parameters being already calibrated: see SoC treatment and Arsène et al.²⁹). As illustrated in Fig. 2,
 235 average value and variability of disease severity evolution in absolute and in relative values, and
 236 value at 6 months (Fig. 2 A-B, C-D, E-F respectively) are well reproduced, for both placebo and
 237 treatment arms.

Virtual population	Age	$\ln(\text{Age}) \sim \mathcal{N}(0.3, 1.8) \text{ \& } 0.6 \leq \text{Age} \leq 8$			
	Gender	$\sim \mathcal{B}(0.5)$			
	SCORAD	$\ln(\text{SCORAD}) \sim \mathcal{N}(3.7, 0.27) \text{ \& } 15 \leq \text{SCORAD} \leq 95$			
	Biomarkers	function*(SCORAD) + $\mathcal{N}(\text{mean}^*, \text{sd}^*)$			
Administration regimen		Week 0 – 1	Week 1 – 2	Week 2 – 3	Week 4 – 36
	Emollients	Every 1 day			
	TCS	Every 1 day	Every 2 days	Every 3 days	Every 3 days (*)
	OM-85	Every 1 day			
Arms	Placebo	Emollients + TCS			
	Treatment	Emollients + TCS + OM-85			
Measurements		Baseline (day 0)		Follow-up: month 1, 3, 6, 9	
	Data ²⁸	SCORAD, flares			
	Model	SCORAD, EASI, biomarkers		SCORAD, EASI	

Table 1. Simulation protocol for in silico clinical trials mimicking the randomized reference clinical trial in Bodemer et al.²⁸ [NCT05222516]. Virtual population (2000 patients / arm), administration regimen, arms, and measurements. * Calibrated.

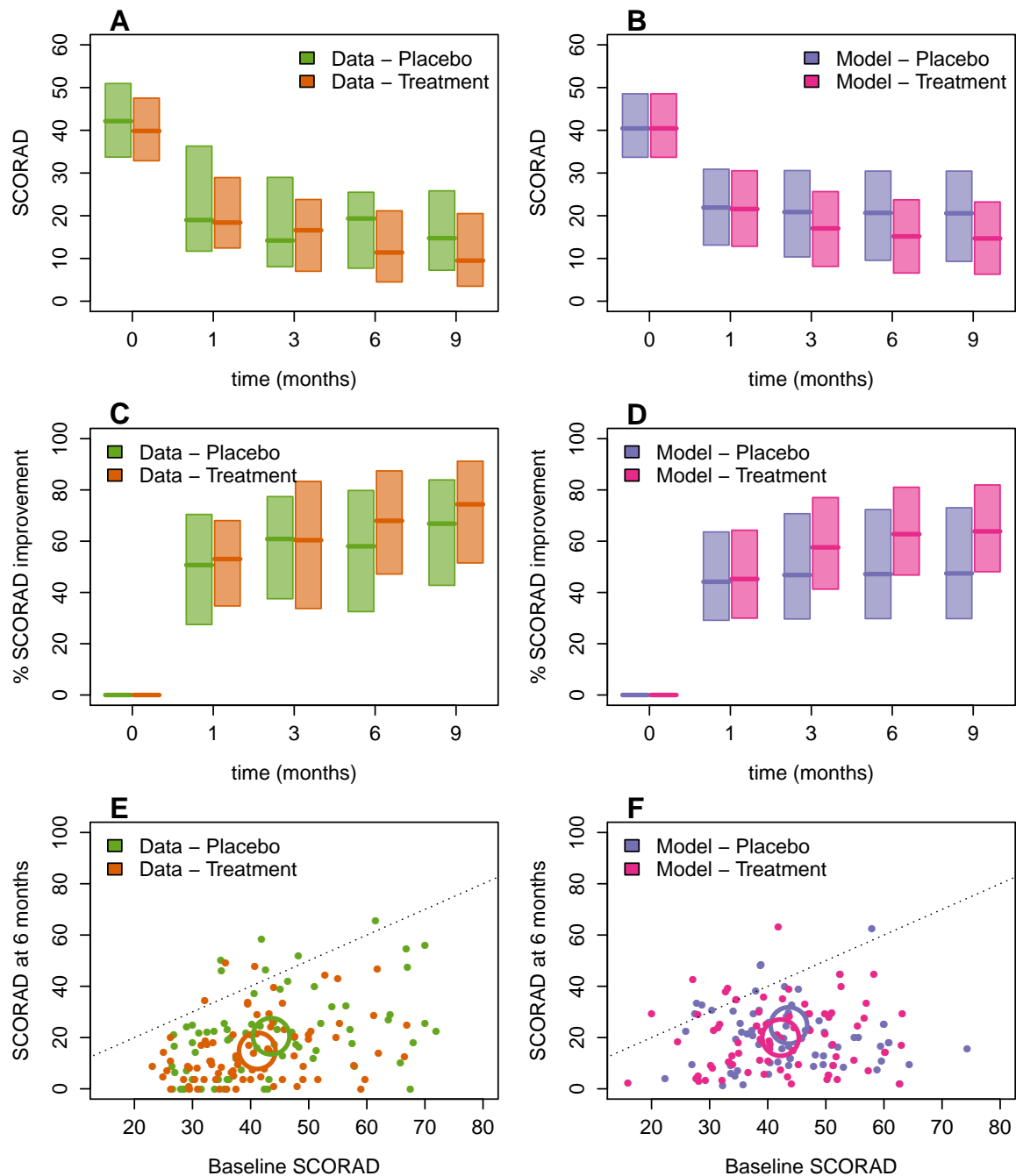


Figure 2. Reproduction of a randomized placebo-controlled clinical trial. A – B: Evolution of AD severity (SCORAD, median: line, quartiles: box) of treatment vs placebo arms from the real trial (Bodemer et al. ²⁸) (A) and virtual population (B) at observation time points. C – D. Evolution of percentage improvement of AD severity (SCORAD, median: line, quartiles: box) of treatment vs placebo arms from the real trial (Bodemer et al. ²⁸) (C) and virtual population (D) at observation time points. E – F: Individual (points) and average (circles) treatment effect represented by the SCORAD at 6 months compared with baseline SCORAD from the real trial (Bodemer et al. ²⁸) (E) and randomly sampled virtual patients matching the baseline SCORAD for placebo and treatment arms (F).

238 In particular, SCORAD at 6 months for data vs model are Q1: 7.7 vs 10.2 median: 19.4 vs 21
239 Q3: 25.5 vs 31. The average calibration error in median SCORAD for the placebo arm is 4.1 (range:
240 1.7 7.1), and 3.2 (range: 0.6 5.8) for the treatment arm. These results show that a predicted impact
241 of protocol changes to SCORAD higher than 5 points can be considered to exceed the efficacy
242 prediction error of our QSP model.

243 **3.2 Assessment of trial results sensitivity to the trial protocol**

244 Trial protocols are complex and contain a high number of degrees of freedom. As such, their impact
245 on efficacy are typically difficult to assess empirically. To address this difficulty, we intend to show
246 that *in silico* trials based on our QSP model can allow clinicians to systematically test variations
247 in trial protocol and conclude on possible trial outcomes. We therefore explored potential design
248 alternatives for the trial reproduced in Section 3.1 (see also Table 1) in order to identify the trial
249 protocol parameters to which the average treatment effect is most sensitive. We report the average
250 treatment effect and sample size estimated for given power in Fig. 3. Overall, the average treatment
251 effect shows a clear sensitivity to variations in dosing regimen of OM-85 administration (Fig. 3A-D)
252 or in the choice of the endpoint (Fig. 3E-H) whereas the impact of SoC treatments parameters
253 (duration of the TCS induction phase, TCS potency, and TCS administration frequency) appear to
254 be negligible ([Supplementary Information S2.1](#)).

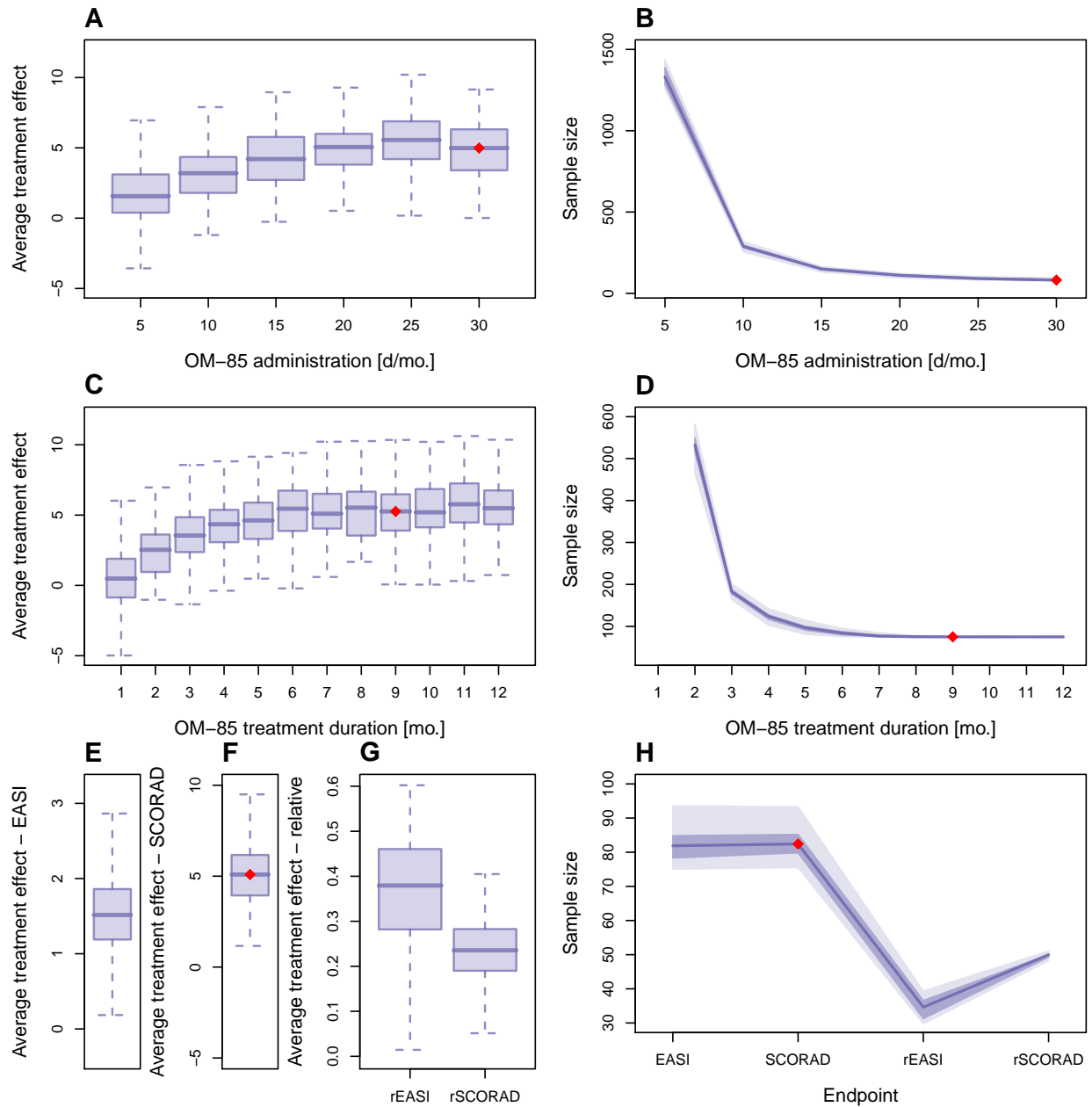


Figure 3. Sensitivity of trial results to trial protocol. Impact of (A – B) OM-85 administration frequency, from 5 to 30 days / month with a 5-day incremental step; (C – D) OM-85 treatment duration, from 1 to 12 months with a 1-month incremental step; (E – H) Endpoint: EASI, SCORAD, relative (*i.e.* normalized by the baseline severity) EASI (rEASI) and SCORAD (rSCORAD). The red dot represents the clinical trial settings of the study of Bodemer et al. ²⁸.

255 The average treatment effect increases with the frequency of OM-85 administration with the best
 256 performance (Fig. 3 A: average treatment effect: 5, B. sample size: 83) being reached with a daily
 257 OM-85 administration as in Bodemer et al. ²⁸. Compared with 5 days of OM-85 administration per

258 month, the average treatment effect is 2 fold higher and the sample size 17 fold smaller. The efficacy
259 also increases with the treatment duration until 6 months of treatment before reaching a plateau
260 (Fig. 3 C: plateau average treatment effect 5.4, D: plateau average sample size 77). Compared with a
261 single month of treatment, the average treatment effect is 10 fold higher and the sample size 6 fold
262 smaller. Finally, our results indicate that the best endpoint is the relative EASI (Fig. 3E-G) for which
263 the power (Fig. 3H) and sample size (Fig. 3I) are minimal: 34 patients are required compared with
264 83 when using absolute SCORAD. Note that average treatment effect appears to be more sensitive
265 to the choice of an absolute vs relative endpoint than to the choice of scoring system (SCORAD or
266 EASI, Fig. 3E).

267 **3.3 QSP model-assisted early biomarker identification**

268 In this section, we showcase how our QSP model can support a biomarker program early in clinical
269 development with the aim of tailoring the target population by inclusion/exclusion criteria. This
270 strategy is relatively common in AD: for example, focusing on higher disease severity strata can
271 reduce population heterogeneity and potentially increase measured clinical benefit (explained e.g.
272 by a larger need for treatment) but at the expense of targeting a more narrow subpopulation of
273 AD patients¹. Selection by phenotype and/or biomarkers may also help with treatment effect
274 stratification and development of companion diagnostics already had success in other disease areas,
275 e.g. in targeted cancer therapy⁸³. However in the context of AD, the identification of predictive
276 biomarkers seems to be difficult and to date, stratification by phenotypes (or associated markers)
277 was not yet successful in stratifying treatment effect⁸⁴ and only a handful of treatment-specific
278 molecular biomarkers have been suggested so far with targeted therapies (see⁸⁵). In part, this is due
279 to the fact that identification of biomarkers predictive of the treatment effect requires the existence
280 of rich datasets which include treatment effect and a panel of marker candidates. In the absence of
281 such data, QSP models, acknowledged by regulatory bodies⁸⁶ (especially in pediatric populations),
282 have been suggested as promising tools to guide biomarker identification because they can leverage
283 knowledge about the involved pathophysiological mechanisms thereby encoding information on

284 how disease pathways respond to biomarker change.

285 **3.3.1 Enriched synthetic trial data generation**

286 We make use of the following two capabilities of the disease model: a) the uncorrelated random
287 variations in the 13 immune biomarker dimensions ([Supplementary Information Table S4](#)) in the
288 virtual population which are in line with known marker variability and correspond to a broad diversity
289 of AD phenotypes b) the alignment of the in silico clinical trial with historical trial data (Section [3.1](#)).
290 This allowed us to predict hypothetical, but biologically plausible, individual treatment effect for
291 each virtual patient after OM-85 treatment including detailed immune cellular and soluble marker
292 dynamics. This procedure augmented the existing demographics and disease severity data into a
293 synthetic but highly immunologically enriched individual patient data set (Fig. [2](#)). In the following
294 sections, we then used this synthetic data to investigate various possible biomarker strategies for
295 treatment effect stratification. Theoretically, there exists a range of options: from the use of disease
296 severity strata to the use of thresholds on baseline markers levels (e.g. informed by a classifier
297 based on linear or logistic regression and receiver operating curve validation) or of entire panels of
298 quantitative marker levels (e.g. using treatment effect predicted from a model). This last strategy is
299 known from other disease areas: for example, many metabolic disease trials employed stratification
300 by insuline resistance as defined by HOMA-IR which uses fasting insulin and glucose levels and
301 which was originally formulated as a rather complex non-linear ODE model⁸⁷.

302 **3.3.2 Disease severity shows only limited potential for treatment effect stratification**

303 In line with the common practice of selecting AD trial populations by severity, we investigated
304 if baseline severity was a good predictor for the OM-85 effect in the reproduced and enriched
305 reference trial data. As a first simple test, we performed a linear regression of the OM-85 effect
306 with respect to virtual patient's baseline disease severity, which resulted in a poor fit ($R^2 = 0.29$).
307 In order to exclude that the too simplistic picture of a linear regression confounds a severity
308 stratification effect, we also employed our QSP model, but using a simplified virtual population

309 where only individual baseline disease severity is varied ([Supplementary Information S2.2](#)). To
310 better explain this approach, an analogy to mixed effect modeling⁸⁸ is useful: in the reference
311 virtual population, severity would be a random effect while all biomarkers would be mixed (with
312 a severity-dependent mean and a random component). In the simplified severity-only population,
313 all biomarkers' fixed effects are kept but the random components are discarded. This approach
314 performs poorly in comparison to the treatment effect values from our synthetic reference data (R^2
315 = 0.35, [Supplementary Information Figure S8.A](#)), similarly to the linear regression. In line with that
316 result, selecting a more severe patient subpopulation in our synthetic reference data is associated with
317 slightly increased mean average treatment effect ([Supplementary Information Figure S8.C1](#)) as well
318 as a predicted smaller sample size ([Supplementary Information Figure S8.C2](#)), but the restriction
319 of the eligible patient fraction grows exponentially with the selection criteria ([Supplementary](#)
320 [Information Figure S8.C3](#)). Selecting patients by baseline disease severity is therefore not the most
321 promising avenue to responder enrichment in this example. This interpretation, however, has to be
322 considered with caution since even though restricting the target population might be acceptable in
323 some cases, clinical management aspects may become limiting for patient selection and more severe
324 AD may have distinct pathophysiological mechanisms.

325 **3.3.3 Workflow for using our QSP model for low-dimensionality biomarker strategy**

326 Consequently, in view of the unsatisfactory results of stratification by disease severity we therefore
327 proceeded to take into account the coupled and non-linear nature of biomarker dynamics imple-
328 mented into our QSP model. While in principle one could use the QSP model to predict treatment
329 effect (and other output variables) using all biomarkers as inputs, this strategy may not be realistic in
330 practice. Indeed, the need of comprehensive data to provide a value for all inputs is in contrast with
331 the ethical burden of taking patient samples as well as economical considerations (e.g. extensive
332 proteomic analyses⁸⁹). Furthermore, the decision of committing to such a large data acquisition
333 plan is difficult to take without some confidence in the fact that these data could efficiently stratify
334 the patient population. Specific parts of our treatment-agnostic model may be less important for the

335 effect of a specific treatment (such as OM-85, which acts via increase of the regulatory response,
336 notably). Therefore, we sought a more parsimonious approach.

337 A preliminary investigation using typical model reduction technique fitting a series of generalized
338 linear models ($R^2=0.2$, [Supplementary Information S2.3](#) and [Supplementary Information Figure](#)
339 [S9.A](#)) did not show promising trade-off between simplification potential and accuracy when simplify-
340 ing the QSP model structure. We therefore aspired to develop a workflow where not the QSP model,
341 but the overall in silico trial approach is simplified. For this, we reduced the virtual population by
342 replacing some biomarker values by reference values (which depends on disease severity) with the
343 idea of not drastically altering treatment effect, the primary outcome. Again, with a mixed effect
344 modeling paradigm in mind, this amounts to removing as many random effects as possible without
345 degrading the model's goodness of fit. Such dimensional reduction approach has several advantages:
346 a) it increases the chances for validation with experimental data and b) it enables the integration with
347 a biomarker identification program in a realistic clinical setting with a limited number of biomarkers
348 per test. This strategy is similar to feature selection techniques that have been suggested earlier to
349 interface machine learning with QSP⁹⁰.

350 Using the example of OM-85 versus placebo as add-on therapy on top of TCS and emollients,
351 we therefore analyzed the contribution of the set of inputs in treatment effect variability. The result
352 of this is the ranked list of markers that need to be supplied to the model (either from clinical data or
353 the virtual population as a plausible theoretical counterpart of such data) in order to predict treatment
354 effect. In practice, we performed an ANOVA-based global sensitivity analysis^{91:92} of treatment
355 effect to baseline biomarkers using a virtual population of 2000 patients characterized by a unique
356 baseline SCORAD ([Supplementary Information Figure S11](#)), which allowed to quantify the main
357 effect of each biomarker and the effects of up to between four biomarker interactions. Ordering
358 the biomarkers by their total effect (biomarker alone and sum of the interactions with any other
359 biomarker) shows that each of the top four - alarmins, IL-22 cytokines, regulatory cytokines, and
360 type-2 cytokines - explains more than 20% of the variance (and 83% in total) (Fig. 4B). Based on
361 their main effect only (and not higher order interactions), they also exhibit the highest influence

362 (8 to 15% each, 46% in total [Supplementary Information](#) Figure S12.A). We thus selected these
363 lead biomarkers to predict treatment effect in the reduced input dimensionality approach. We then
364 evaluated how this input dimensionality reduction approach performs, by confronting treatment
365 effect values predicted with the reduced-variability vs the reference virtual population (Fig. 4A).
366 While this approach leads to slight overestimation of treatment effect (Fig. 4C), the accuracy of the
367 predictions is satisfactory (Fig. 4D, RMSE = 2.6, $R^2 = 0.63$). Indeed, the prediction error (limited
368 vs. full approach) is lower than 5 (SCORAD) for 94% of the virtual patients and the average error
369 is 1.1 (min: 0.0002, Q1: 0.45, Q3: 2.23, max: 24.5). This prediction error is notably lower than
370 measurement errors typically reported (normally distributed with a SD of 5⁹³).

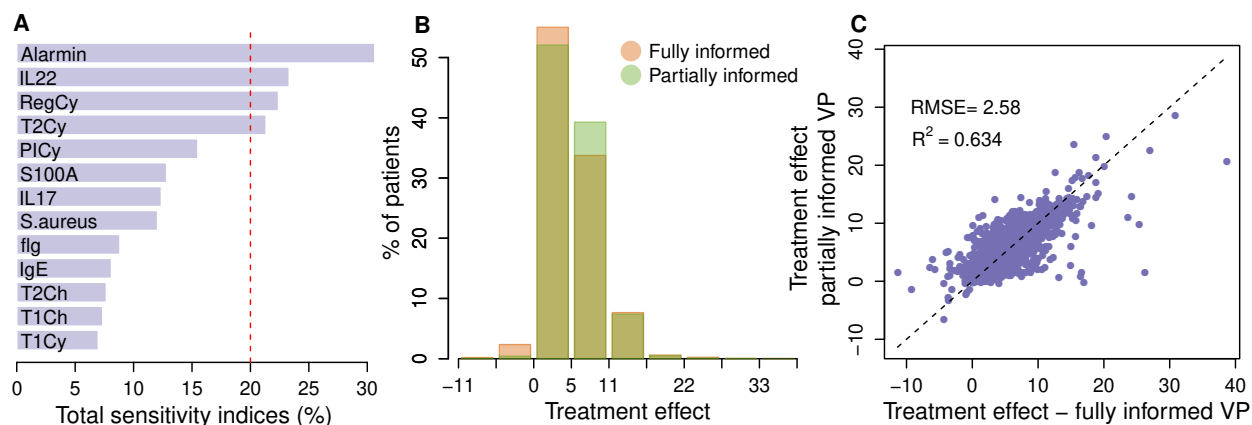


Figure 4. Low-dimensionality biomarker strategy. A. Global sensitivity analysis quantifying the (total: main + interactions) influence of baseline biomarkers on the treatment effect variance; selected key biomarkers have a sensitivity index above the red dashed line (20 %). B. Treatment effect distribution from the fully vs partially informed virtual population. C. Performance of the dimensionality reduction approach: comparison of treatment effect predicted by the fully vs partially informed virtual population.

371 We finally assessed the potential of using the biomarkers identified with the input dimensionality
372 reduction approach for trial protocol optimization. In particular, we tested the effect of selecting
373 virtual patients with required increasingly high treatment effect (predicted upon baseline marker
374 selection); and we constructed subpopulations (including all patients – without selection – to the
375 top 5% responders in incremental steps of 5%). For assessing this strategy's performance, we report
376 three indicators in Fig. 5: average treatment effect, sample size and statistical power. Selecting the
377 top 50% responders results in 50% improvement of the average treatment effect (Fig. 5A), 50%

378 reduction of the average sample size (Fig. 5B), and 31% improvement of the average chance of
379 success of the trial (Fig. 5C). The maximal improvement for the average treatment effect (with
380 respect to reference trial, enrolling only the top 5% predicted responders) is roughly 150% (Fig. 5A),
381 the maximal reduction of the average sample size is 75% (Fig. 5B), and the maximal improvement of
382 the average chance of success 33% (Fig. 5C). We also evaluated the impact of patient selection on the
383 recruitment effort, defined as the total number of patients to be screened (Fig. 5D). The recruitment
384 effort can be seen as a metric of the optimal selection criteria, as in the clinics, part of the cost would
385 scale with the number of patients to screen. Our results suggest the optimal selection criterion lies
386 between 25% and 60% of best responders, where the recruitment effort is the lowest, with a 19%
387 average decrease compared to no selection. The recruitment effort exponentially increases with
388 the selection stringency when selecting the top patients up to the top 60%, representing up to 300
389 patients to be screened for the top 5% selection criterion, *i.e.* 275% more than without selection.

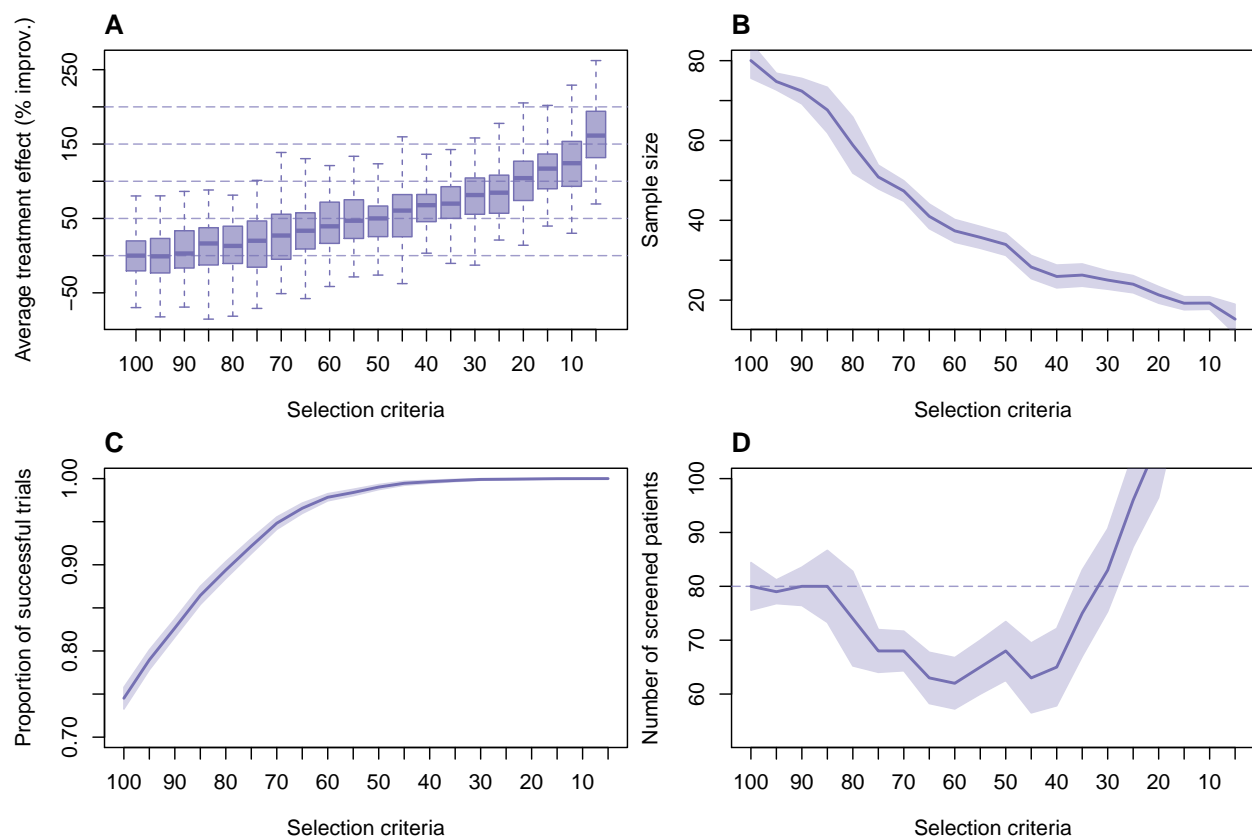


Figure 5. Clinical trial optimization based on predicted responders selection. A. Average treatment effect improvement (in %) vs increasingly strict selection criteria (top % responders): median (line), interquartile range (box), whisker (dashed line). B. Sample size distribution (obtained by bootstrapping over 100 samples) vs increasingly strict selection criteria: mean (line) and standard deviation (colored area). C. Statistical power (*i.e.* proportion of successful trials) distribution (obtained by bootstrapping over 100 samples) vs increasingly strict selection criteria : mean (line) and standard deviation (colored area). D. Recruitment effort (total number of patients to be screened during the recruitment process) distribution) vs increasingly strict selection criteria: mean (line) and standard deviation (colored area). Note that the y-axes have been reduced to highlight the optimum area, on average, 305 patients are to be screened for the selection of the top 5% best responders.

4 Discussion

4.1 Opportunities and challenges of combining complex QSP models and trial simulation

PBPK and PD models, QSP models, exposure response modeling and trial simulations are often regarded as distinct modeling paradigms under the umbrella of model-informed drug development⁹⁴. There exist to date only few integrated modeling frameworks which couple QSP models and trial simulations^{18;95–97}, most probably because they are complex to set up, multiscale by design, require a multi-stakeholder engagement and considerable effort for verification and validation^{98;99}. One of the main hurdles for complex models (e.g. in QSP) is the high-dimensional parameter space which needs to be informed or calibrated. High complexity can be a necessary feature¹⁰⁰ of the model and can also increase its robustness: different biological contexts can be covered and thus heterogeneous data from multiple sources can be used for calibration. On the other hand, high-dimensional models are prone to identifiability issues and parameter estimation suffers from non-convex and multi-modal objective functions with gradients that are computationally expensive to evaluate¹⁰¹. To add to this complexity, there is no consensus on the best method, and performance of such methods are model-specific¹⁰¹. We have therefore chosen an approach that minimized the number of parameters to calibrate. We have coupled our disease model, our SoC treatments models, and the treatment model of the immunomodulator OM-85²⁹ into a QSP model. Central to the disease model setup has been the choice of an equilibrium assumption (i.e. defining the system in terms of stationary dynamics), which allowed for calculating rather than calibrating a large fraction of the free parameters. In this way, from the set of 139 parameters present in the final QSP model, 70 could be constrained by the equilibrium approach; with 46 others being fixed with information from the literature, effectively leaving only 23 unknown parameters for calibration (i.e. with SoC data). The drawback of this method is that the pathogenesis, natural evolution and resolution of the disease are not described and that the used datasets (here skin proteomics in pediatric patients) convey context specificity (e.g. the model would need to be re-informed for adults and serum biomarkers).

416 While such a QSP model can resolve several questions around patient profiles and dosing-
417 regimen, simulation studies of entire clinical trials needs a dedicated workflow. We therefore set up
418 a virtual population of AD patients to reproduce the between-patient variability of our reference
419 clinical trial²⁸. We used arm designs (intervention, dosing-regimen), eligibility criteria and trial
420 duration to perform trial simulations to predict drug efficacy according to a variety of trial protocols,
421 therefore covering a wide spectrum of potential variables for trial design. Classically, in trial
422 simulation used for statistical design, efficacy is considered as a constant by aggregating efficacy
423 across all considered historical trials. However, when data exhibit heterogeneous treatment effects,
424 uncertainty needs to be acknowledged and variability assessed by meta-regression and model-based
425 meta-analysis. In fact, our QSP workflow can be considered as a corner case of model-based
426 meta-analysis where several inputs from patient characteristics and posology are translated through
427 mechanistic relationships into modulation of the efficacy. By using Monte-Carlo trial simulations
428 (sometimes termed microsimulations) for several protocols and by assessing resulting simulation
429 data for sample and effect size, we found a reduced sensitivity of efficacy optimization to dosing
430 regimen (meaning that the dosing scheme from the reference trial is probably already optimal)
431 compared to the choice of a relative severity endpoint over an absolute one which seems to harbor
432 more potential for trial design optimization. In addition, this framework can be readily used for
433 follow-up investigations like recruitment or cost-effectiveness considerations. One of the drawbacks
434 of such trial simulation method (as compared to Monte Carlo simulation with a constant drug effect)
435 is the high computational cost (per virtual patient) and the large storage and memory requirements
436 when simulating many virtual patients.

437 **4.2 Towards the holy grail of model-informed predictive biomarker explo-** 438 **ration**

439 Adjusting the dose and the treatment to each patient's individual characteristics are the guiding
440 principles of personalized medicine. Yet, today the gold standard for the approval of new drugs
441 by regulatory agencies are placebo-controlled randomized clinical trials that report efficacy of

442 entire populations of patients (see our discussion in Courcelles et al.¹⁰² from a health technology
443 assessment perspective). A way to better individualize drug development could be to use patient
444 stratification and subgroup analysis, optimally performed on the basis of easily measurable biomark-
445 ers as objective (and ideally validated) predictors of treatment effect (predictive biomarkers). In fact,
446 trials using biomarkers have an almost doubled overall probability of success compared to trials
447 without biomarkers, notably in Phase I and II according to an analysis of Wong et al.¹⁰³, but the use
448 of biomarkers outside of oncology is not very frequent¹⁰³. To be implemented early-on, exploration
449 of potential biomarkers has to be started prior to Phase I trials so that validation and qualification
450 of biomarkers can be tackled during clinical development¹⁰⁴. While in targeted oncology, markers
451 (*i.e.* mutations) indicating the diseases vulnerability to treatment modulation are straightforward in
452 their interpretation, inflammatory diseases often involve an intricate network of immune signaling
453 and cellular pathways so that the search for biomarkers signatures is like a needle in the haystack⁸⁵.
454 In AD, progress has been made to identify biomarkers of severity such as systemic levels of the
455 chemokine C-C motif ligand 17/thymus, an activation-regulated chemokine and chemoattractant
456 of Th2 cells, which shows robust correlation with AD clinical severity, at both baseline and during
457 therapy and thus could be used an objective surrogate for treatment effect¹⁰⁵, but if such biomarker
458 can also predict treatment effect for a specific investigational drug of interest is still an open question.

459 The motivation behind this study was to use our QSP workflow to map the body of evidence of the
460 relationships between biomarker levels and disease severity, in line with the immune dysregulation
461 system involved in AD, onto a reference trial so that synthetic trial data is enriched with such
462 biologically plausible information. As a proof of concept and to increase the practical applicability
463 of our workflow, we tested several approaches to identify biomarkers predictive of treatment effect.
464 We identified that neither a linearized surrogate model approach nor subgroup analysis by severity
465 only lead to sufficient stratification potential, which a) plausibly underlines the difficulty to find
466 predictive biomarkers in the context of AD (clinical data are in fact often analyzed using these
467 statistical techniques), and b) emphasizes the need for methods which take into account non-linear
468 effects for this purpose. Only an input dimensionality reduction approach, based on global sensitivity

469 analysis proved accurate enough for identification of the skin biomarkers most predictive of OM-85
470 treatment effect. We did not intend to oversimplify the structural model (e.g. by lumping techniques)
471 in view of the anticipated unbiased exploratory nature of the model. As linearization of the model was
472 unsuccessful, the only viable option for simplification was to reduce the number of predictive input
473 baseline biomarkers characterizing each virtual patient by replacing variability by fixed reference
474 values. Quantification of how the input dimensionality reduction approach performs for predicting
475 individual treatment effect makes us confident that embedding it within the *in silico* clinical trial
476 framework can yield a treatment-specific tool that captures the state-of-the-art knowledge about how
477 skin biomarkers are involved in the mechanism of action. As a perspective, this could a) inform the
478 inclusion into the sample collection and analysis plan of e.g. Phase II trials, b) be prospectively
479 validated through comparison with the generated clinical data and c) once qualified could support the
480 clinical evidence by enrichment in sparsely sampled regions of biomarker space. For the use-case of
481 OM-85, we found a subset of four skin biomarkers (alarmins, IL-22, type-2 and regulatory cytokines)
482 predictive of treatment effect and we simulated that patient selection based on this subset may lead
483 to larger effect size. In line with our results and among the skin biomarkers the model identified
484 to be predictive of OM-85 effect, IL-22 and IL-13 expression levels in the skin tissues have been
485 previously identified to strongly and significantly correlate with clinical therapeutic effect in AD¹⁰⁵.
486 Development of such computational approaches goes well in hand with promoting clinical trials
487 designed to validate or reject the predictions made by the model and which could then either be
488 used to improve subsequent (e.g. Phase IIb and III) clinical trial designs or in a learn and confirm
489 paradigm to refine our model¹⁰⁵.

490 **Competing interests statement**

491 N.G., S.A., I.F., T.G., S.M.B., D.L., Y.W., L.E., E.J., C.M., J.B., and A.K. are employees of
492 Novadiscovery. C.S., C.P., and L.L are employees of OM Pharma. Novadiscovery and OM Pharma
493 funded the study.

494 **Acknowledgments**

495 We acknowledge Valentin Vierge and Daniel Šmít for contributing to model building and calibration,
496 Germà Gómez for statistical support, and Louis Philippe for technical support.

497 **Authors contributions**

498 A.K., S.A., L.L., C.P and C.S. supervised the study. N.G., S.A. and A.K. designed the model. N.G,
499 S.A, I.F., T.G., S.M.B., D.L., Y.W., L.E. developed the model. N.G. performed the simulations
500 and analyzed the results. N.G., S.A. and A.K wrote the manuscript. All authors contributed to the
501 discussion of the results and reviewed the manuscript.

502 **Code and data availability**

503 All information needed to reproduce the simulations are described in the references of this manuscript,
504 and the supplementary information. Access to the computational model code, documentation and
505 simulation results are available on Jinko.ai platform upon request to the corresponding author. R
506 scripts developed for analysis of simulation results and producing the figures are also available upon
507 reasonable request.

508 **Supplementary Information**

509 The Supplementary File contains: (S1) Supplementary Methods where the (S1.1) Model, (S1.2)
510 Calibration, (S1.3 Biomarker selection, and (S1.4) Bootstrapping procedure are described in details;
511 (S2) Supplementary Results for (S2.1) Assessment of the efficacy sensitivity to the TCS related
512 trial protocol settings, (S2.2) Performance baseline AD severity as a marker of treatment effect, and
513 (S2.3) Identification of predictive biomarkers using a surrogate model approach; (S3) Supplementary
514 Figures and (S4) Supplementary Tables.

References

- [1] S. Barbarot, S. Auziere, A. Gadkari, G. Girolomoni, L. Puig, E. L. Simpson, D. J. Margolis, M. Bruin-Weller, and L. Eckert. Epidemiology of atopic dermatitis in adults: Results from an international survey. *Allergy*, 73(6):1284–1293, February 2018. doi: 10.1111/all.13401.
- [2] Jonathan I. Silverberg, Joel M. Gelfand, David J. Margolis, Mark Boguniewicz, Luz Fonacier, Mitchell H. Grayson, Eric L. Simpson, Peck Y. Ong, and Zelma C. Chiesa Fuxench. Patient burden and quality of life in atopic dermatitis in US adults. *Annals of Allergy, Asthma & Immunology*, 121(3):340–347, September 2018. doi: 10.1016/j.anai.2018.07.006.
- [3] Eric L. Simpson, Thomas Bieber, Laurent Eckert, Richard Wu, Marius Ardeleanu, Neil M.H. Graham, Gianluca Pirozzi, and Vera Mastey. Patient burden of moderate to severe atopic dermatitis (AD): Insights from a phase 2b clinical trial of dupilumab in adults. *Journal of the American Academy of Dermatology*, 74(3):491–498, March 2016. doi: 10.1016/j.jaad.2015.10.043.
- [4] Torsten Zuberbier, Seth J. Orlow, Amy S. Paller, Alain Taïeb, Roger Allen, José M. Hernanz-Hermosa, Jorge Ocampo-Candiani, Margaret Cox, Joanne Langeraar, and Jan C. Simon. Patient perspectives on the management of atopic dermatitis. *Journal of Allergy and Clinical Immunology*, 118(1):226–232, July 2006. doi: 10.1016/j.jaci.2006.02.031.
- [5] Daniel C. Butler, Eric Simpson, Emma Guttman-Yassky, Lawrence F. Eichenfield, Alexandra K. Golant, John Y. M. Koo, April W. Armstrong, Andrew F. Alexis, Peter A. Lio, Justin W. Marson, and Mark Lebwohl. The atopic dermatitis spectrum disorder. recognizing the clinical heterogeneity in patients with atopic related skin conditions in order to improve therapeutic decision-making and outcomes: an expert panel consensus statement. *Journal of Dermatological Treatment*, 33(4):2397–2399, August 2021. doi: 10.1080/09546634.2021.1966356.
- [6] Sinéad M Langan, Alan D Irvine, and Stephan Weidinger. Atopic dermatitis. *The Lancet*, 396(10247):345–360, August 2020. doi: 10.1016/s0140-6736(20)31286-1.
- [7] Kunal Malik, Kerry D. Heitmiller, and Tali Czarnowicki. An update on the pathophysiology of atopic dermatitis. *Dermatologic Clinics*, 35(3):317–326, July 2017. doi: 10.1016/j.det.

542 2017.02.006.

543 [8] Thomas Bieber. Atopic dermatitis: an expanding therapeutic pipeline for a complex
544 disease. *Nature Reviews Drug Discovery*, 21(1):21–40, August 2021. doi: 10.1038/
545 s41573-021-00266-6.

546 [9] Paola Facheris, Jane Jeffery, Ester Del Duca, and Emma Guttman-Yassky. The translational
547 revolution in atopic dermatitis: the paradigm shift from pathogenesis to treatment. *Cellular*
548 *& Molecular Immunology*, March 2023. doi: 10.1038/s41423-023-00992-4. URL <https://doi.org/10.1038/s41423-023-00992-4>.
549

550 [10] Quinn Thibodeaux, Mary Patricia Smith, Karen Ly, Kristen Beck, Wilson Liao, and Tina
551 Bhutani. A review of dupilumab in the treatment of atopic diseases. *Human Vaccines &*
552 *Immunotherapeutics*, 15(9):2129–2139, March 2019. doi: 10.1080/21645515.2019.1582403.

553 [11] Thomas Bieber, Claudia Traidl-Hoffmann, Georg Schäppi, Roger Lauener, Cezmi Akdis,
554 and Peter Schmid-Grendlmeier. Unraveling the complexity of atopic dermatitis: The CK-
555 CARE approach toward precision medicine. *Allergy*, 75(11):2936–2938, February 2020. doi:
556 10.1111/all.14194.

557 [12] Th. Bieber. Atopic dermatitis 2.0: from the clinical phenotype to the molecular taxonomy
558 and stratified medicine. *Allergy*, pages n/a–n/a, October 2012. doi: 10.1111/all.12049.

559 [13] S. E. Baron, S. N. Cohen, and C. B. Archer and. Guidance on the diagnosis and clinical
560 management of atopic eczema. *Clinical and Experimental Dermatology*, 37:7–12, April 2012.
561 doi: 10.1111/j.1365-2230.2012.04336.x.

562 [14] Peter A. Lio, Margaret Lee, Jennifer LeBovidge, Karol G. Timmons, and Lynda Schneider.
563 Clinical management of atopic dermatitis: Practical highlights and updates from the atopic
564 dermatitis practice parameter 2012. *The Journal of Allergy and Clinical Immunology: In*
565 *Practice*, 2(4):361–369, July 2014. doi: 10.1016/j.jaip.2014.02.015.

566 [15] Jonathan I. Silverberg, Eric L. Simpson, April W. Armstrong, Marjolein S. de Bruin-Weller,
567 Alan D. Irvine, and Kristian Reich. Expert perspectives on key parameters that impact interpre-
568 tation of randomized clinical trials in moderate-to-severe atopic dermatitis. *American Journal*

- 569 *of Clinical Dermatology*, 23(1):1–11, October 2021. doi: 10.1007/s40257-021-00639-y.
- 570 [16] Charles F. Schuler, Allison C. Billi, Emanuel Maverakis, Lam C. Tsoi, and Johann E.
571 Gudjonsson. Novel insights into atopic dermatitis. *Journal of Allergy and Clinical*
572 *Immunology*, 151(5):1145–1154, May 2023. doi: 10.1016/j.jaci.2022.10.023. URL
573 <https://doi.org/10.1016/j.jaci.2022.10.023>.
- 574 [17] Kilian Eyerich, Sara J Brown, Bethany E Perez White, Reiko J Tanaka, Robert Bissonette,
575 Sandipan Dhar, Thomas Bieber, Dirk J Hijnen, Emma Guttman-Yassky, Alan Irvine, et al.
576 Human and computational models of atopic dermatitis: A review and perspectives by an
577 expert panel of the international eczema council. *Journal of Allergy and Clinical Immunology*,
578 143(1):36–45, 2019. doi: 10.1016/j.jaci.2018.10.033.
- 579 [18] Marco Viceconti, Adriano Henney, and Edwin Morley-Fletcher. In silico clinical trials: how
580 computer simulation will transform the biomedical industry. *International Journal of Clinical*
581 *Trials*, 3(2):37, May 2016. doi: 10.18203/2349-3259.ijct20161408.
- 582 [19] Leia Wedlund and Joseph Kvedar. Simulated trials: in silico approach adds depth and
583 nuance to the RCT gold-standard. *npj Digital Medicine*, 4(1), August 2021. doi: 10.1038/
584 s41746-021-00492-7.
- 585 [20] Vincent Lemaire, David Bassen, Mike Reed, Roy Song, Samira Khalili, Yi Ting (Kayla) Lien,
586 Lu Huang, Aman P. Singh, Spyros Stamatelos, Dean Bottino, and Fei Hua. From cold to
587 hot: Changing perceptions and future opportunities for quantitative systems pharmacology
588 modeling in cancer immunotherapy. *Clinical Pharmacology & Therapeutics*, 113(5):963–972,
589 November 2022. doi: 10.1002/cpt.2770. URL [https://doi.org/10.1002/cpt.](https://doi.org/10.1002/cpt.2770)
590 [2770](https://doi.org/10.1002/cpt.2770).
- 591 [21] Elisa Domínguez-Hüttinger, Panayiotis Christodoulides, Kosuke Miyauchi, Alan D Irvine,
592 Mariko Okada-Hatakeyama, Masato Kubo, and Reiko J Tanaka. Mathematical model-
593 ing of atopic dermatitis reveals double-switch mechanisms underlying 4 common disease
594 phenotypes. *Journal of Allergy and Clinical Immunology*, 139(6):1861–1872, 2017. doi:
595 10.1016/j.jaci.2016.10.026.

- 596 [22] Takuya Miyano, Alan D Irvine, and Reiko J Tanaka. A mathematical model to identify
597 optimal combinations of drug targets for dupilumab poor responders in atopic dermatitis.
598 *Allergy*, 77(2):582–594, 2022. doi: 10.1101/2021.02.08.21251317.
- 599 [23] Jane P. F. Bai, Justin C. Earp, Jeffry Florian, Rajanikanth Madabushi, David G. Strauss,
600 Yaning Wang, and Hao Zhu. Quantitative systems pharmacology: Landscape analysis of
601 regulatory submissions to the US food and drug administration. *CPT: Pharmacometrics &*
602 *Systems Pharmacology*, 10(12):1479–1484, November 2021. doi: 10.1002/psp4.12709. URL
603 <https://doi.org/10.1002/psp4.12709>.
- 604 [24] Takuya Miyano, Alan D. Irvine, and Reiko J. Tanaka. Model-based meta-analysis to optimize
605 staphylococcus aureustargeted therapies for atopic dermatitis. *JID Innovations*, 2(3):100110,
606 May 2022. doi: 10.1016/j.xjidi.2022.100110. URL [https://doi.org/10.1016/j.](https://doi.org/10.1016/j.xjidi.2022.100110)
607 [xjidi.2022.100110](https://doi.org/10.1016/j.xjidi.2022.100110).
- 608 [25] M Huber, H Mossmann, and W G Bessler. Th1-orientated immunological properties of the
609 bacterial extract OM-85-BV. *Eur. J. Med. Res.*, 10(5):209–217, May 2005.
- 610 [26] Agnieszka Kaczynska, Martyna Klosinska, Kamil Janeczek, Michał Zarobkiewicz, and
611 Andrzej Emeryk. Promising immunomodulatory effects of bacterial lysates in allergic
612 diseases. *Frontiers in Immunology*, 13, June 2022. doi: 10.3389/fimmu.2022.907149.
- 613 [27] Urs B. Schaad. OM-85 BV, an immunostimulant in pediatric recurrent respiratory tract
614 infections: a systematic review. *World Journal of Pediatrics*, 6(1):5–12, February 2010. doi:
615 10.1007/s12519-010-0001-x.
- 616 [28] Christine Bodemer, Gerard Guillet, Frederic Cambazard, Franck Boralevi, Stefania Bal-
617 larini, Christian Milliet, Paola Bertuccio, Carlo La Vecchia, Jean-Francois Bach, and
618 Yves de Prost. Adjuvant treatment with the bacterial lysate (om-85) improves manage-
619 ment of atopic dermatitis: A randomized study. *PLoS One*, 12(3):e0161555, 2017. doi:
620 10.1371/journal.pone.0161555.
- 621 [29] Simon Arsène, Claire Couty, Igor Faddeenkov, Natacha Go, Solène Granjeon-Noriot, Daniel
622 Šmít, Riad Kahoul, Ben Illigens, Jean-Pierre Boissel, Aude Chevalier, Lorenz Lehr, Christian

- 623 Pasquali, and Alexander Kulesza. Modeling the disruption of respiratory disease clinical
624 trials by non-pharmaceutical COVID-19 interventions. *Nature Communications*, 13(1), April
625 2022. doi: 10.1038/s41467-022-29534-8.
- 626 [30] Magdalena Trzeciak, Monika Sakowicz-Burkiewicz, Martyna Wesserling, Daria
627 Dobaczewska, Jolanta Glen, Roman Nowicki, and Tadeusz Pawelczyk. Expression of corni-
628 fied envelope proteins in skin and its relationship with atopic dermatitis phenotype. *Acta*
629 *dermato-venereologica*, 97(1):36–41, 2017. doi: 10.2340/00015555-2482.
- 630 [31] Zheng Sun, Shi Huang, Pengfei Zhu, Feng Yue, Helen Zhao, Ming Yang, Yueqing Niu,
631 Gongchao Jing, Xiaoquan Su, Huiying Li, et al. A microbiome-based index for assessing
632 skin health and treatment effects for atopic dermatitis in children. *Msystems*, 4(4):e00293–19,
633 2019. doi: 10.1128/mSystems.00293-19.
- 634 [32] Donald Y. M. Leung, Agustin Calatroni, Livia S. Zaramela, Petra K. LeBeau, Nathan Dyjack,
635 Kanwaljit Brar, Gloria David, Keli Johnson, Susan Leung, Marco Ramirez-Gama, Bo Liang,
636 Cydney Rios, Michael T. Montgomery, Brittany N. Richers, Clifton F. Hall, Kathryn A.
637 Norquest, John Jung, Irina Bronova, Simion Kreimer, C. Conover Talbot, Debra Crumrine,
638 Robert N. Cole, Peter Elias, Karsten Zengler, Max A. Seibold, Evgeny Berdyshev, and Elena
639 Goleva. The nonlesional skin surface distinguishes atopic dermatitis with food allergy as a
640 unique endotype. *Science Translational Medicine*, 11(480):eaav2685, February 2019. doi:
641 10.1126/scitranslmed.aav2685.
- 642 [33] Taras Lyubchenko, Hannah K. Collins, Elena Goleva, and Donald Y.M. Leung. Skin tape
643 sampling technique identifies proinflammatory cytokines in atopic dermatitis skin. *Annals of*
644 *Allergy, Asthma & Immunology*, 126(1):46–53.e2, January 2020. doi: 10.1016/j.anai.2020.08.
645 397.
- 646 [34] E. Guttman-Yassky, A. Diaz, A. B. Pavel, M. Fernandes, R. Lefferdink, T. Erickson, T. Canter,
647 S. Rangel, X. Peng, R. Li, Y. Estrada, H. Xu, J. G. Krueger, and A. S. Paller. Use of
648 Tape Strips to Detect Immune and Barrier Abnormalities in the Skin of Children With
649 Early-Onset Atopic Dermatitis. *JAMA Dermatol*, 155(12):1358–1370, Dec 2019. doi:

- 650 10.1001/jamadermatol.2019.2983.
- 651 [35] Helen He, Robert Bissonnette, Gianni Wu, Aisleen Diaz, Etienne Saint-Cyr Proulx, Catherine
652 Maari, Carolyn Jack, Maudeline Louis, Yeriel Estrada, James G. Krueger, Ning Zhang, Ana B.
653 Pavel, and Emma Guttman-Yassky. Tape strips detect distinct immune and barrier profiles in
654 atopic dermatitis and psoriasis. *Journal of Allergy and Clinical Immunology*, 147(1):199–212,
655 January 2021. doi: 10.1016/j.jaci.2020.05.048.
- 656 [36] Annalisa Patrizi, Bruno Capitanio, Iria Neri, Federica Giacomini, Jo L. Sinagra, Beatrice
657 Raone, and Enzo Berardesca. A double-blind, randomized, vehicle-controlled clinical
658 study to evaluate the efficacy and safety of MAS063dp (ATOPICLAIR™) in the man-
659 agement of atopic dermatitis in paediatric patients. *Pediatric Allergy and Immunology*, 0(0):
660 080220191244231–???, February 2008. doi: 10.1111/j.1399-3038.2008.00724.x.
- 661 [37] Jolanta Szczepanowska, Adam Reich, and Jacek C. Szepietowski. Emollients improve
662 treatment results with topical corticosteroids in childhood atopic dermatitis: a randomized
663 comparative study. *Pediatric Allergy and Immunology*, 19(7):614–618, January 2008. doi:
664 10.1111/j.1399-3038.2007.00706.x.
- 665 [38] Brian S. Kim, Michael D. Howell, Kang Sun, Kim Papp, Adnan Nasir, and Michael E.
666 Kuligowski. Treatment of atopic dermatitis with ruxolitinib cream (JAK1/JAK2 inhibitor) or
667 triamcinolone cream. *Journal of Allergy and Clinical Immunology*, 145(2):572–582, February
668 2020. doi: 10.1016/j.jaci.2019.08.042.
- 669 [39] TA Luger, M Lahfa, R Fölster-Holst, WP Gulliver, R Allen, S Molloy, N Barbier, C Paul,
670 and JD Bos. Long-term safety and tolerability of pimecrolimus cream 1% and topical
671 corticosteroids in adults with moderate to severe atopic dermatitis. *Journal of Dermatological*
672 *Treatment*, 15(3):169–178, June 2004. doi: 10.1080/09546630410033781.
- 673 [40] Jogarao V.S. Gobburu and Lawrence J. Lesko. Quantitative disease, drug, and trial models.
674 *Annual Review of Pharmacology and Toxicology*, 49(1):291–301, February 2009. doi: 10.
675 1146/annurev.pharmtox.011008.145613.
- 676 [41] Jean-Louis Palgen, Angélique Perrillat-Mercerot, Nicoletta Ceres, Emmanuel Peyronnet,

- 677 Matthieu Coudron, Elliott Tixier, Ben M. W. Illigens, Jim Bosley, Adèle L'Hostis, and Claudio
678 Monteiro. Integration of heterogeneous biological data in multiscale mechanistic model
679 calibration: Application to lung adenocarcinoma. *Acta Biotheoretica*, 70(3), July 2022. doi:
680 10.1007/s10441-022-09445-3.
- 681 [42] Peter L. Bonate. *Pharmacokinetic-Pharmacodynamic Modeling and Simulation*. Springer
682 US, 2011. doi: 10.1007/978-1-4419-9485-1.
- 683 [43] Kilian Eyerich and Stefanie Eyerich. Th22 cells in allergic disease. *Allergo journal interna-*
684 *tional*, 24(1):1–7, 2015. doi: 10.1007/s40629-015-0039-3.
- 685 [44] Jung Eun Kim, Jong Sic Kim, Dae Ho Cho, and Hyun Jeong Park. Molecular mechanisms
686 of cutaneous inflammatory disorder: atopic dermatitis. *International journal of molecular*
687 *sciences*, 17(8):1234, 2016. doi: 10.3390/ijms17081234.
- 688 [45] Gregory F Sonnenberg, Lynette A Fouser, and David Artis. Border patrol: regulation
689 of immunity, inflammation and tissue homeostasis at barrier surfaces by il-22. *Nature*
690 *immunology*, 12(5):383–390, 2011. doi: 10.1038/ni.2025.
- 691 [46] A Konur, U Schulz, G Eissner, Reinhard Andreesen, and E Holler. Interferon (ifn)- γ is a
692 main mediator of keratinocyte (hacat) apoptosis and contributes to autocrine ifn- γ and tumour
693 necrosis factor- α production. *British Journal of Dermatology*, 152(6):1134–1142, 2005. doi:
694 10.1111/j.1365-2133.2005.06508.x.
- 695 [47] Takashi Nomura, Tetsuya Honda, and Kenji Kabashima. Multipolarity of cytokine axes in the
696 pathogenesis of atopic dermatitis in terms of age, race, species, disease stage and biomarkers.
697 *International immunology*, 30(9):419–428, 2018. doi: 10.1093/intimm/dxy015.
- 698 [48] Patrick M. Brunner, Emma Guttman-Yassky, and Donald Y.M. Leung. The immunology of
699 atopic dermatitis and its reversibility with broad-spectrum and targeted therapies. *Journal of*
700 *Allergy and Clinical Immunology*, 139(4):S65–S76, April 2017. doi: 10.1016/j.jaci.2017.01.
701 011.
- 702 [49] A Halawi, O Abbas, and M Mahalingam. S100 proteins and the skin: a review. *Journal*
703 *of the European Academy of Dermatology and Venereology*, 28(4):405–414, 2014. doi:

- 704 10.1111/jdv.12237.
- 705 [50] Robert Kantor and Jonathan I Silverberg. Environmental risk factors and their role in the
706 management of atopic dermatitis. *Expert review of clinical immunology*, 13(1):15–26, 2017.
707 doi: 10.1080/1744666x.2016.1212660.
- 708 [51] Joshua L Owen, Paras P Vakharia, and Jonathan I Silverberg. The role and diagnosis of
709 allergic contact dermatitis in patients with atopic dermatitis. *American journal of clinical
710 dermatology*, 19(3):293–302, 2018. doi: 10.1007/s40257-017-0340-7.
- 711 [52] Wendy F. Davidson, Donald Y.M. Leung, Lisa A. Beck, Cecilia M. Berin, Mark Bogu-
712 niewicz, William W. Busse, Talal A. Chatila, Raif S. Geha, James E. Gern, Emma Guttman-
713 Yassky, Alan D. Irvine, Brian S. Kim, Heidi H. Kong, Gideon Lack, Kari C. Nadeau, Julie
714 Schwaninger, Angela Simpson, Eric L. Simpson, Jonathan M. Spergel, Alkis Togias, Ulrich
715 Wahn, Robert A. Wood, Judith A. Woodfolk, Steven F. Ziegler, and Marshall Plaut. Report
716 from the national institute of allergy and infectious diseases workshop on “atopic dermatitis
717 and the atopic march: Mechanisms and interventions”. *Journal of Allergy and Clinical
718 Immunology*, 143(3):894–913, March 2019. doi: 10.1016/j.jaci.2019.01.003.
- 719 [53] Natalija Novak and Thomas Bieber. The role of dendritic cell subtypes in the pathophysiology
720 of atopic dermatitis. *Journal of the American Academy of Dermatology*, 53(2):S171–S176,
721 2005. doi: 10.1016/j.jaad.2005.04.060.
- 722 [54] Pawinee Rerknimitr, Atsushi Otsuka, Chisa Nakashima, and Kenji Kabashima. The etiopatho-
723 genesis of atopic dermatitis: barrier disruption, immunological derangement, and pruritus.
724 *Inflammation and regeneration*, 37(1):1–15, 2017. doi: 10.1186/s41232-017-0044-7.
- 725 [55] Peck Y Ong. New insights in the pathogenesis of atopic dermatitis. *Pediatric research*, 75(1):
726 171–175, 2014. doi: 10.1038/pr.2013.196.
- 727 [56] Thomas Bieber. The pro-and anti-inflammatory properties of human antigen-presenting cells
728 expressing the high affinity receptor for ige (fc ϵ ri). *Immunobiology*, 212(6):499–503, 2007.
729 doi: 10.1016/j.imbio.2007.03.001.
- 730 [57] Sakeen W Kashem, Muzlifah Haniffa, and Daniel H Kaplan. Antigen-presenting

- 731 cells in the skin. *Annu Rev Immunol*, 35(1):469–499, 2017. doi: 10.1146/
732 annurev-immunol-051116-052215.
- 733 [58] Rachana Agrawal, Julia A Wisniewski, and Judith A Woodfolk. The role of regulatory t cells
734 in atopic dermatitis. *Pathogenesis and Management of Atopic Dermatitis*, 41:112–124, 2011.
735 doi: 10.1159/000323305.
- 736 [59] J Thyssen, M Rinnov, and C Vestergaard. Disease mechanisms in atopic dermatitis: A
737 review of aetiological factors. *Acta Dermato Venereologica*, 100(12):adv00162, 2020. doi:
738 10.2340/00015555-3512.
- 739 [60] KU Schallreuter, Ch Levenig, J Berger, J Umbert, RK Winkelmann, L Wegener, O Correia,
740 O Chosidow, Ph Saiag, S Bastuji-Garin, et al. Severity scoring of atopic dermatitis: the
741 SCORAD index. *Dermatology*, 186(1):23–31, 1993. doi: 10.1159/000247298.
- 742 [61] J. M. Hanifin, M. Thurston, M. Omoto, R. Cherill, S. J. Tofte, M. Graeber, and The
743 Easi Evaluator Group. The eczema area and severity index (EASI): assessment of relia-
744 bility in atopic dermatitis. *Experimental Dermatology*, 10(1):11–18, February 2001. doi:
745 10.1034/j.1600-0625.2001.100102.x.
- 746 [62] Stephan Weidinger and Natalija Novak. Atopic dermatitis. *The Lancet*, 387(10023):
747 1109–1122, March 2016. doi: 10.1016/s0140-6736(15)00149-x.
- 748 [63] Lawrence F. Eichenfield, Wynniss L. Tom, Timothy G. Berger, Alfons Krol, Amy S. Paller,
749 Kathryn Schwarzenberger, James N. Bergman, Sarah L. Chamlin, David E. Cohen, Kevin D.
750 Cooper, Kelly M. Cordoro, Dawn M. Davis, Steven R. Feldman, Jon M. Hanifin, David J.
751 Margolis, Robert A. Silverman, Eric L. Simpson, Hywel C. Williams, Craig A. Elmets, Julie
752 Block, Christopher G. Harrod, Wendy Smith Begolka, and Robert Sidbury. Guidelines of care
753 for the management of atopic dermatitis. *Journal of the American Academy of Dermatology*,
754 71(1):116–132, July 2014. doi: 10.1016/j.jaad.2014.03.023.
- 755 [64] Peter J. Barnes. Anti-inflammatory actions of glucocorticoids: Molecular mechanisms.
756 *Clinical Science*, 94(6):557–572, June 1998. doi: 10.1042/cs0940557.
- 757 [65] N. J. Reynolds and W. I. Al-Daraji. Calcineurin inhibitors and sirolimus: mechanisms of

- 758 action and applications in dermatology. *Clinical and Experimental Dermatology*, 27(7):
759 555–561, October 2002. doi: 10.1046/j.1365-2230.2002.01148.x.
- 760 [66] A. Alomar, J. Berth-Jones, J.D. Bos, A. Giannetti, S. Reitamo, T. Ruzicka, J-F. Stalder, and
761 K. Thestrup-Pedersen and. The role of topical calcineurin inhibitors in atopic dermatitis:.
762 *British Journal of Dermatology*, 151(s70):3–27, December 2004. doi: 10.1111/j.1365-2133.
763 2004.06269.x.
- 764 [67] Luís Uva, Diana Miguel, Catarina Pinheiro, Joana Antunes, Diogo Cruz, João Ferreira, and
765 Paulo Filipe. Mechanisms of action of topical corticosteroids in psoriasis. *International*
766 *Journal of Endocrinology*, 2012:1–16, 2012. doi: 10.1155/2012/561018.
- 767 [68] Gagandeep Kwatra and Sandip Mukhopadhyay. Topical corticosteroids: Pharmacology. In *A*
768 *Treatise on Topical Corticosteroids in Dermatology*, pages 11–22. Springer Singapore, May
769 2017. doi: 10.1007/978-981-10-4609-4_2.
- 770 [69] Thomas Hultsch, Alexander Kapp, and Jonathan Spergel. Immunomodulation and safety of
771 topical calcineurin inhibitors for the treatment of atopic dermatitis. *Dermatology*, 211(2):
772 174–187, 2005. doi: 10.1159/000086739.
- 773 [70] Sandipan Dhar, Joly Seth, and Deepak Parikh. Systemic side-effects of topical corticosteroids.
774 *Indian Journal of Dermatology*, 59(5):460, 2014. doi: 10.4103/0019-5154.139874.
- 775 [71] Sean Christopher Kearney, Marcin Dziekiewicz, and Wojciech Feleszko. Immunoregulatory
776 and immunostimulatory responses of bacterial lysates in respiratory infections and asthma.
777 *Annals of Allergy, Asthma & Immunology*, 114(5):364–369, 2015. doi: 10.1016/j.anai.2015.
778 02.008.
- 779 [72] Clark D. Russell, Stefan A. Unger, Marc Walton, and Jürgen Schwarze. The human immune
780 response to respiratory syncytial virus infection. *Clinical Microbiology Reviews*, 30(2):
781 481–502, April 2017. doi: 10.1128/cmr.00090-16.
- 782 [73] Xianwei Wang, Hui Peng, and Zhigang Tian. Innate lymphoid cell memory. *Cellular &*
783 *Molecular Immunology*, 16(5):423–429, February 2019. doi: 10.1038/s41423-019-0212-6.
- 784 [74] S Navarro, G Cossalter, C Chiavaroli, A Kanda, S Fleury, A Lazzari, J Cazareth, T Sparwasser,

- 785 D Dombrowicz, N Glaichenhaus, and V Julia. The oral administration of bacterial extracts
786 prevents asthma via the recruitment of regulatory t cells to the airways. *Mucosal Immunology*,
787 4(1):53–65, January 2011. doi: 10.1038/mi.2010.51.
- 788 [75] D H Strickland, S Judd, J A Thomas, A N Larcombe, P D Sly, and P G Holt. Boosting airway
789 t-regulatory cells by gastrointestinal stimulation as a strategy for asthma control. *Mucosal*
790 *Immunology*, 4(1):43–52, January 2011. doi: 10.1038/mi.2010.43.
- 791 [76] Ran Fu, Jian Li, Hua Zhong, Dehong Yu, Xianping Zeng, Mengxia Deng, Yueqi Sun, Weiping
792 Wen, and Huabin Li. Broncho-vaxom attenuates allergic airway inflammation by restoring
793 GSK3 β -related t regulatory cell insufficiency. *PLoS ONE*, 9(3):e92912, March 2014. doi:
794 10.1371/journal.pone.0092912.
- 795 [77] B. Emmerich, K. Pachmann, D. Milatovic, and H.P. Emslander. Influence of OM-85 BV
796 on different humoral and cellular immune defense mechanisms of the respiratory tract.
797 *Respiration*, 59(3):19–23, 1992. doi: 10.1159/000196126.
- 798 [78] Mirco Lusuardi, Armando Capelli, Sonia Carli, Elisa L. Spada, Alberto Spinazzi, and Clau-
799 dio F. Donner. Local airways immune modifications induced by oral bacterial extracts in
800 chronic bronchitis. *Chest*, 103(6):1783–1791, June 1993. doi: 10.1378/chest.103.6.1783.
- 801 [79] J R Mora and U H von Andrian. Differentiation and homing of IgA-secreting cells. *Mucosal*
802 *Immunology*, 1(2):96–109, March 2008. doi: 10.1038/mi.2007.14.
- 803 [80] So-Yeon Lee, Eun Lee, Yoon Mee Park, and Soo-Jong Hong. Microbiome in the gut-skin
804 axis in atopic dermatitis. *Allergy, Asthma & Immunology Research*, 10(4):354, 2018. doi:
805 10.4168/aair.2018.10.4.354.
- 806 [81] J P Boissel, M Cucherat, W Li, G Chatellier, F Gueyffier, M Buyse, F Boutitie, P Nony,
807 M Haugh, and G Mignot. The problem of therapeutic efficacy indices. 3. comparison of the
808 indices and their use. *Therapie*, 54(4):405–411, 1999.
- 809 [82] Zuozhen Wang. Comparison of sample size by bootstrap and by formulas based on normal
810 distribution assumption. *Therapeutic Innovation & Regulatory Science*, 53(2):170–175,
811 March 2019. doi: 10.1177/2168479018778280.

- 812 [83] Cynthia Huber, Tim Friede, Julia Stingl, and Norbert Benda. Classification of companion
813 diagnostics: A new framework for biomarker-driven patient selection. *Therapeutic Innovation*
814 *& Regulatory Science*, 56(2):244–254, November 2021. doi: 10.1007/s43441-021-00352-2.
815 URL <https://doi.org/10.1007/s43441-021-00352-2>.
- 816 [84] Daphne Bakker, Marjolein de Bruin-Weller, Julia Drylewicz, Femke van Wijk, and Judith
817 Thijs. Biomarkers in atopic dermatitis. *Journal of Allergy and Clinical Immunology*, February
818 2023. doi: 10.1016/j.jaci.2023.01.019. URL [https://doi.org/10.1016/j.jaci.](https://doi.org/10.1016/j.jaci.2023.01.019)
819 [2023.01.019](https://doi.org/10.1016/j.jaci.2023.01.019).
- 820 [85] Styliani Mastrafitsi, Georgia Vrioni, Michail Bakakis, Electra Nicolaidou, Dimitrios Rigopou-
821 los, Alexander J. Stratigos, and Stamatios Gregoriou. Atopic dermatitis: Striving for
822 reliable biomarkers. *Journal of Clinical Medicine*, 11(16):4639, August 2022. doi:
823 10.3390/jcm11164639. URL <https://doi.org/10.3390/jcm11164639>.
- 824 [86] Ich guideline e11a on pediatric extrapolation ema/chmp/ich/205218/2022. URL
825 [https://www.ema.europa.eu/en/documents/scientific-guideline/](https://www.ema.europa.eu/en/documents/scientific-guideline/draft-ich-guideline-e11a-pediatric-extrapolation-step-2b_en.pdf)
826 [draft-ich-guideline-e11a-pediatric-extrapolation-step-2b_en.](https://www.ema.europa.eu/en/documents/scientific-guideline/draft-ich-guideline-e11a-pediatric-extrapolation-step-2b_en.pdf)
827 [pdf](https://www.ema.europa.eu/en/documents/scientific-guideline/draft-ich-guideline-e11a-pediatric-extrapolation-step-2b_en.pdf).
- 828 [87] D. R. Matthews, J. P. Hosker, A. S. Rudenski, B. A. Naylor, D. F. Treacher, and R. C. Turner.
829 Homeostasis model assessment: insulin resistance and β -cell function from fasting plasma
830 glucose and insulin concentrations in man. *Diabetologia*, 28(7):412–419, July 1985. doi:
831 10.1007/bf00280883. URL <https://doi.org/10.1007/bf00280883>.
- 832 [88] Peter L. Bonate, Amit Desai, Ahsan Rizwan, Zheng Lu, and Stacey Tannenbaum.
833 Nonlinear mixed effects modeling in systems pharmacology. In *Systems Pharma-*
834 *cology and Pharmacodynamics*, pages 255–276. Springer International Publishing,
835 2016. doi: 10.1007/978-3-319-44534-2_12. URL [https://doi.org/10.1007/](https://doi.org/10.1007/978-3-319-44534-2_12)
836 [978-3-319-44534-2_12](https://doi.org/10.1007/978-3-319-44534-2_12).
- 837 [89] Wei Chang Colin Tan, Sanjna Nilesh Nerurkar, Hai Yun Cai, Harry Ho Man Ng, Duoduo
838 Wu, Yu Ting Felicia Wee, Jeffrey Chun Tatt Lim, Joe Yeong, and Tony Kiat Hon Lim.

- 839 Overview of multiplex immunohistochemistry/immunofluorescence techniques in the era
840 of cancer immunotherapy. *Cancer Communications*, 40(4):135–153, April 2020. doi:
841 10.1002/cac2.12023.
- 842 [90] Tongli Zhang, Ioannis P. Androulakis, Peter Bonate, Limei Cheng, Tomáš Helikar, Jaimit
843 Parikh, Christopher Rackauckas, Kalyanasundaram Subramanian, Carolyn R. Cho, Ioan-
844 nis P. Androulakis, Peter Bonate, Ivan Borisov, Gordon Broderick, Limei Cheng, Valeriu
845 Damian, Rafael Dariolli, Oleg Demin, Nicholas Ellinwood, Dirk Fey, Abhishek Gulati, Tomas
846 Helikar, Eric Jordie, Cynthia Musante, Jaimit Parikh, Christopher Rackauckas, Julio Saez-
847 Rodriguez, Eric Sobie, Kalyanasundaram Subramanian, and Carolyn R. Cho and. Two heads
848 are better than one: current landscape of integrating QSP and machine learning. *Journal*
849 *of Pharmacokinetics and Pharmacodynamics*, 49(1):5–18, February 2022. doi: 10.1007/
850 s10928-022-09805-z. URL <https://doi.org/10.1007/s10928-022-09805-z>.
- 851 [91] A Saltelli. Sensitivity analysis; saltelli a, chan k, scott m, editors, 2000.
- 852 [92] I.M Sobol'. Global sensitivity indices for nonlinear mathematical models and their monte
853 carlo estimates. *Mathematics and Computers in Simulation*, 55(1-3):271–280, February 2001.
854 doi: 10.1016/s0378-4754(00)00270-6.
- 855 [93] Agnieszka Bożek and Adam Reich. Assessment of intra- and inter-rater reliability of three
856 methods for measuring atopic dermatitis severity: EASI, objective SCORAD, and IGA.
857 *Dermatology*, 233(1):16–22, 2017. doi: 10.1159/000472711.
- 858 [94] Rajanikanth Madabushi, Paul Seo, Liang Zhao, Million Tegenge, and Hao Zhu. Review: Role
859 of model-informed drug development approaches in the lifecycle of drug development and
860 regulatory decision-making. *Pharmaceutical Research*, 39(8):1669–1680, May 2022. doi:
861 10.1007/s11095-022-03288-w.
- 862 [95] José Ramón Gutiérrez-Casares, Javier Quintero, Guillem Jorba, Valentin Junet, Vicente
863 Martínez, Tamara Pozo-Rubio, Baldomero Oliva, Xavier Daura, José Manuel Mas, and
864 Carmen Montoto. Methods to develop an in silico clinical trial: Computational head-to-head
865 comparison of lisdexamfetamine and methylphenidate. *Frontiers in Psychiatry*, 12, November

- 866 2021. doi: 10.3389/fpsyt.2021.741170.
- 867 [96] Francesco Pappalardo, Giulia Russo, Flora Musuamba Tshinanu, and Marco Viceconti.
868 In silico clinical trials: concepts and early adoptions. *Briefings in Bioinformatics*, 20(5):
869 1699–1708, June 2018. doi: 10.1093/bib/bby043.
- 870 [97] A. Carlier, A. Vasilevich, M. Marechal, J. de Boer, and L. Geris. In silico clini-
871 cal trials for pediatric orphan diseases. *Scientific Reports*, 8(1), February 2018. doi:
872 10.1038/s41598-018-20737-y.
- 873 [98] Marco Viceconti, Francesco Pappalardo, Blanca Rodriguez, Marc Horner, Jeff Bischoff,
874 and Flora Musuamba Tshinanu. In silico trials: Verification, validation and uncertainty
875 quantification of predictive models used in the regulatory evaluation of biomedical products.
876 *Methods*, 185:120–127, January 2021. doi: 10.1016/j.ymeth.2020.01.011.
- 877 [99] Flora T. Musuamba, Ine Skottheim Rusten, Raphaëlle Lesage, Giulia Russo, Roberta Bursi,
878 Luca Emili, Gaby Wangorsch, Efthymios Manolis, Kristin E. Karlsson, Alexander Kulesza,
879 Eulalie Courcelles, Jean-Pierre Boissel, Cécile F. Rousseau, Emmanuelle M. Voisin, Rossana
880 Alessandrello, Nuno Curado, Enrico Dall’ara, Blanca Rodriguez, Francesco Pappalardo, and
881 Liesbet Geris. Scientific and regulatory evaluation of mechanistic in silico drug and disease
882 models in drug development: Building model credibility. *CPT: Pharmacometrics & Systems
883 Pharmacology*, 10(8):804–825, July 2021. doi: 10.1002/psp4.12669.
- 884 [100] B Ribba, HP Grimm, B Agoram, MR Davies, K Gadkar, S Niederer, N van Riel, J Timmis,
885 and PH van der Graaf. Methodologies for quantitative systems pharmacology (QSP) models:
886 Design and estimation. *CPT: Pharmacometrics & Systems Pharmacology*, 6(8):496–498,
887 July 2017. doi: 10.1002/psp4.12206.
- 888 [101] Eva-Maria Kapfer, Paul Stapor, and Jan Hasenauer. Challenges in the calibration of large-
889 scale ordinary differential equation models. *IFAC-PapersOnLine*, 52(26):58–64, 2019. doi:
890 10.1016/j.ifacol.2019.12.236.
- 891 [102] Eulalie Courcelles, Jean-Pierre Boissel, Jacques Massol, Ingrid Klingmann, Riad Kahoul,
892 Marc Hommel, Emmanuel Pham, and Alexander Kulesza. Solving the evidence interpretabil-

- 893 ity crisis in health technology assessment: A role for mechanistic models? *Frontiers in*
894 *Medical Technology*, 4, February 2022. doi: 10.3389/fmedt.2022.810315.
- 895 [103] Chi Heem Wong, Kien Wei Siah, and Andrew W Lo. Estimation of clinical trial success
896 rates and related parameters. *Biostatistics*, 20(2):273–286, January 2018. doi: 10.1093/
897 biostatistics/kxx069.
- 898 [104] Daniel S. W. Tan, George V. Thomas, Michelle D. Garrett, Udai Banerji, Johann S. de Bono,
899 Stan B. Kaye, and Paul Workman. Biomarker-driven early clinical trials in oncology. *The*
900 *Cancer Journal*, 15(5):406–420, September 2009. doi: 10.1097/ppo.0b013e3181bd0445.
- 901 [105] Yael Renert-Yuval, Jacob P. Thyssen, Robert Bissonnette, Thomas Bieber, Kenji Kabashima,
902 DirkJan Hijnen, and Emma Guttman-Yassky. Biomarkers in atopic dermatitis—a review on
903 behalf of the international eczema council. *Journal of Allergy and Clinical Immunology*, 147
904 (4):1174–1190.e1, April 2021. doi: 10.1016/j.jaci.2021.01.013.