

1 Environmental predictors of malaria infection in Sussundenga, Mozambique

2

3 Alexa Steiber<sup>1</sup>, João L. Ferrão<sup>2</sup>, Albino B. Francisco<sup>3</sup>, Valy Muhiro<sup>4</sup>, Anísio Novela<sup>4</sup>, Dominique E.

4 Earland<sup>1</sup>, Kelly M. Searle<sup>1</sup>

5

6 <sup>1</sup> University of Minnesota School of Public Health, Division of Epidemiology and Community

7 Health

8 <sup>2</sup> Consultores Associados de Manica

9 <sup>3</sup> Escola Secundária de Sussundenga

10 <sup>4</sup> Sussundenge-Sede Centro de Saude Rural.

11

12 \*Corresponding Author: Alexa Steiber, [steib015@umn.edu](mailto:steib015@umn.edu)

13 **Abstract**

14

15 Malaria is highly sensitive to environmental conditions, including climate variability and land  
16 use practices. Ecologically, Sussundenga district has a significantly lower elevation compared to  
17 the Zimbabwe border and a more tropical climate compared to southern and northern  
18 Mozambique due to high seasonal rainfall. We aimed to evaluate the effects of climate and  
19 environmental factors at the household level on rapid diagnostic test results for Malaria in  
20 Sussundenga, Mozambique. To understand this association, we collected publicly available  
21 United States Geological Survey satellite data on elevation, vegetation, and land use cover.  
22 Additionally, we collected satellite data on day and night land surface temperatures and  
23 evapotranspiration which we assessed at 1- and 2-week lags. We spatially and temporally  
24 joined these data with malaria infection data at the household level. Using this database, we  
25 assessed whether these environmental factors were good predictors for having a positive rapid  
26 diagnostic test result using spatio-temporal models that accounted for the underlying  
27 correlation structure. Risk factor surveillance is an important tool for controlling the spread of  
28 infectious diseases. The results from modeling of the ecological predictors of malaria infection  
29 and spatial maps provided in this study could aid in developing frameworks to mitigate malaria  
30 transmission and predict future malaria transmission in this region. Understanding how  
31 environmental changes impacts malaria transmission and infection at the household level may  
32 have important implications for vector control and disease surveillance strategies utilized by  
33 the district.

34

## 35 Introduction

36

37 Malaria is a life-threatening disease that is transmitted to humans through the bite of  
38 *Anopheles spp.* mosquitoes infected with *Plasmodium spp.* parasites. In 2021, Mozambique had  
39 a cumulative incidence of 32% and was among the four countries that accounted for almost  
40 half of all malaria cases globally (the other three being Nigeria, Democratic Republic of the  
41 Congo, and Uganda)(1). Malaria is endemic in Mozambique, with seasonal peaks ranging from  
42 December through April depending on the ecological zone and length of the rainy season.

43

44 Malaria transmission is influenced by numerous environmental and ecological conditions.  
45 Variation in climatic conditions, such as temperature, rainfall patterns, and humidity, have a  
46 profound effect on the longevity and fecundity of the mosquito vectors and on the  
47 development of *Plasmodium falciparum* parasites in the mosquito vectors, which is why  
48 increases in malaria incidence, prevalence, and distribution have been identified as potential  
49 consequences of climate change(2). The Notre Dame Global Adaptation Initiative (ND-GAIN)  
50 summarizes countries' vulnerability to climate change by assessing their economic, social, and  
51 governance readiness, their potential for exposure to climate change, the degree to which they  
52 depend on sectors that are impacted by climate change, and their adaptive capacity(3). In 2020,  
53 based on the aforementioned factors, ND-GAIN ranked Mozambique as the 48<sup>th</sup> out of 182  
54 most vulnerable to, and the 21<sup>st</sup> out of 192 least ready to address the effects of climate  
55 change(3).

56

57 Despite the burden of malaria in Mozambique, and its vulnerability to climate change, the use  
58 of spatio-temporal models to examine the association between malaria risk and environmental  
59 factors has been relatively underutilized. One study conducted in Sussundenga Village,  
60 Mozambique which aimed to develop malaria risk maps as a function of environmental  
61 conditions found that precipitation, slope, and land cover were related to malaria risk.(4) In  
62 addition to environmental variables, a systematic review conducted in 2015 found that  
63 improved housing features are associated with a lower risk of epidemiological outcomes,  
64 including malaria infection.(5) Manica Province in central Mozambique has the second highest  
65 malaria incidence in the country and Sussundenga village is one of the most affected areas in  
66 this province.<sup>4</sup> The objective of this study was to integrate individual level, household level, and  
67 environmental level data, across space and time, in order to evaluate the impacts of  
68 environmental factors and housing structure on malaria infection measured by rapid diagnostic  
69 test (RDT) in Sussundenga Village.

70

## 71 **Materials and Methods**

72

### 73 *Study area*

74

75 Sussundenga village is an agrarian community located in Sussundenga District, Manica Province,  
76 Mozambique. It is a rural area located 42 km from Chimoio, the capital of Manica Province, and  
77 is approximately 40km from the Zimbabwe border.

78

79 **[Figure 1: Study area in Sussundenga District, Mozambique]**

80

81 Sussundenga has an estimated population of 31,429 individuals. Males and females comprise  
82 47% and 53% of the population, respectively, and the majority of individuals are 15 years or  
83 older (50.6%).<sup>4</sup>

84

85 Ecologically, Sussundenga District has a significantly lower elevation compared to the  
86 Zimbabwe border and a more tropical climate compared to southern and northern  
87 Mozambique due to high seasonal rainfall.<sup>5</sup>(6) The rainy season occurs from November to April.  
88 The annual precipitation is 1200mm and the average temperature is 21.2 °C.<sup>5</sup>

89

90 *Data collection*

91

92 Publicly available climate data was collected from the United States Geological Survey's (USGS)  
93 Moderate Resolution Imaging Spectroradiometer (MODIS) and the NASA Digital Elevation  
94 Model (NASADEM) on day and night land surface temperature, evapotranspiration, normalized  
95 difference vegetation index (NDVI), land cover, and elevation.

96

- 97
- Land Surface Temperature (LST): The MOD11A2 Version 6 product provides an 8-day  
98 per-pixel Land Surface Temperature (day and night) with a 1-kilometer spatial resolution  
99 in a 1200 by 1200 km grid. Each pixel value in the MOD11A2 is a simple average of all  
100 the corresponding MOD11A2 LST pixels collected within that 8-day period.

- 101       ● Evapotranspiration (ET): The MOD16A2 Version 6 ET product is an 8-day composite  
102       dataset produced at 500-meter pixel resolution. The algorithm used for the MOD16 data  
103       product collection is based on the logic of the Penman-Monteith equation, which  
104       includes inputs of daily meteorological reanalysis data along with MODIS remotely  
105       sensed data products such as vegetation property dynamics, albedo, and land cover  
106       (USGS MOD16A2 v006).(7) The pixel values for the ET layer is the sum of all eight days  
107       within the composite period.
- 108       ● Vegetation (NDVI): The MOD13A1 Version 6 product provides NDVI values at a per pixel  
109       basis at 500-meter spatial resolution. MODIS vegetation indices, produced on 16-day  
110       intervals, provide consistent spatial and temporal comparisons of vegetation canopy  
111       greenness, a composite property of leaf area, chlorophyll and canopy structure.
- 112       ● Land Cover (LC): The MCD12Q1 Version 6 data product provides global land cover types  
113       at yearly intervals, derived from six different classification schemes. The classifications  
114       are derived through a supervised decision-tree classification method and undergo  
115       additional post-processing that incorporate prior knowledge and ancillary information  
116       to further refine specific classes. The primary land cover scheme identifies 17 classes  
117       defined by the International Geosphere-Biosphere Programme (IGBP), including 11  
118       natural vegetation classes, three human-altered classes, and three non-vegetated  
119       classes.
- 120       ● Elevation: Elevation data were obtained from NASADEM Version 1 dataset housed on  
121       the USGS Earth Explorer platform. NASADEM provides global elevation data at 1 arc  
122       second spacing.

123  
124 Epidemiological data on individual characteristics and malaria infection status was obtained  
125 from a cross-sectional community survey conducted in Sussundenga village from December  
126 2019-February 2020. Households were randomly selected for screening from satellite imagery  
127 after which data collectors used GPS coordinates to approach the selected households for  
128 participation. The data collectors enrolled 100 households, recorded the household GPS  
129 coordinates, and administered an electronic survey to all eligible participants (any full-time  
130 resident older than 3 months with parents providing responses for children aged 3 months to  
131 12 years). Individual and household-level demographic information and housing structure  
132 information was collected via the electronic survey. Additionally, a study nurse collected a  
133 finger prick blood sample and administered an RDT [Right Sign Malaria Pf (Biotest, Hangzhou  
134 Biotest Biotech Co, China)]. All data were collected and stored using the REDCap® server hosted  
135 at University of Minnesota School of Public Health and was treated confidentially.(8)

136  
137 *Data analysis*

138  
139 All data analyses were performed using Stata (StataCorp LLC, version 16.1). All data were  
140 deidentified prior to analysis. The environmental and epidemiological data were spatially and  
141 temporally joined at the household level using QGIS (Matera, version 7.8.0). A binary variable  
142 was used to represent the dependent variable, malaria infection by RDT. Pearson Chi square  
143 tests for categorical variables and t-tests for independent variables were used to compare the

144 following socio-demographic characteristics between RDT positive and negative individuals  
145 without adjusting for covariates:

- 146
- 147 ● Individual level: Age, sex, ITN use the previous night
  - 148 ● Household level: Head of household occupation, head of household type of employment  
149 (full-time, part-time, seasonal), head of household highest education level, wall, floor,  
150 and roof material, whether the house had holes in the walls, whether the eaves were  
151 open, whether the windows closed (completely, partially, or not at all), and the vector  
152 control measure used (drains water around the house, cuts the grass/keeps the lawn  
153 clean, burns oils or mosquito coils, uses insecticides outside of the house, or none)
  - 154 ● Environment level: Landcover, elevation, ET, day LST, night LST, and NDVI

155

156 Univariate analyses on all explanatory variables were conducted. Day and night LSTs and ET  
157 were assessed at both 1- and 2-week lags. Only one of the time lagged variables for each factor  
158 (day and night LST, and ET)-the one that appeared to be the best predictor for malaria based on  
159 the effect size and statistical significance-was included in the final models. Interactions between  
160 the environmental predictors were assessed, however none were statistically significant and  
161 thus were not included in the final models. Forward selection was used to build the final  
162 generalized estimating equation (GEE) models that account for the underlying correlation  
163 structure (independent) in order to examine the association between each environmental  
164 factor and having a positive RDT. Household structural factors were assessed as effect modifiers  
165 in each of these models.



166

167 *Ethics Statement*

168 Ethical review and approval for this study was completed by the Institutional Review Board  
169 (IRB) at the University of Minnesota [STUDY00007184] and from A Comissão Nacional de  
170 Bioética em Saúde (CNBS) at the Ministry of Health of Mozambique [IRB00002657]. Data  
171 collectors obtained verbal informed consent along with a written signature or thumb print (for  
172 record keeping purposes) for all adult residents and parent/guardian permission for children  
173 between 3 months and 12 years old and assent for minors between 13 and 17 years old.

174

175 **Results**

176

177 *Demographic Characteristics*

178

179 Of the 303 individuals tested, 94 (31%) were found to be positive for malaria by RDT at the time  
180 of the survey (Table 1). The median age of participants that tested positive was 12 and the  
181 median age of participants that tested negative was 20. Based on the 95% CIs, there was not a  
182 statistically significant difference regarding the proportion of males and females across malaria  
183 status groups; among those who tested positive, 46.7% were male and 53.3% were female and  
184 among those who tested negative, 43.9% were male and 56.1% were female. There was also  
185 not a statistically significant difference between those who had a positive RDT and a negative  
186 RDT in regard to whether they slept under an ITN the previous night.

187

188 Table 1: Demographic characteristics of participants

189

Characteristic	RDT POS (Just report medians and percentages )	IQR/CI	RDT NEG (Just report medians and percentage s)	IQR/CI
	<i>n</i> = 94		<i>n</i> = 209	
<b>Individual Level</b>				
Age, years, median	12	7-19	20	11-31
Male gender, %	46.7	0.36-0.57	43.9	0.37-0.51
Female gender, %	53.3	0.43-0.64	56.1	0.46-0.67
Slept under ITN previous night, <i>n</i> (%)	55.3	0.45-0.66	68.3	0.62-0.75
<b>Household Level</b>				
Head of household occupation, <i>n</i> (%)				
<i>Farmer</i>	52.1	0.42-0.63	38	0.31-0.45
<i>Teacher</i>	11.7	0.06-0.20	15.9	0.11-0.22
<i>Healthcare worker</i>	3.2	0.01-0.09	6.7	0.04-0.11
<i>Shopkeeper</i>	0	0-0.04	1.9	0.01-0.05
<i>Other</i>	33	0.24-0.43	37.5	0.31-0.44
Head of household type of employment, <i>n</i> (%)				
<i>Full time</i>	48.9	0.39-0.60	69.9	0.63-0.76
<i>Seasonally or Part time</i>	51.1	0.41-0.62	30.1	0.24-0.37
Head of household highest education level, <i>n</i> (%)				

<i>Primary school 1 and 2</i>	41.5	0.31-0.52	29.6	0.24-0.36
<i>Secondary school 1</i>	20.2	0.13-0.30	24.9	0.20-0.31
<i>Technical school or university</i>	25.6	0.17-0.36	35.4	0.29-0.42
<i>No school</i>	10.6	0.05-0.19	10.1	0.06-0.15
<i>Do not know</i>	2.1	0.003-0.08	0	0-0.02
Wall material, <i>n</i> (%)				
<i>Natural (i.e., no walls, straw)</i>	4.3	0.01-0.11	7.3	0.04-0.12
<i>Rudimentary (i.e., bamboo, zinc sheet)</i>	41.4	0.31-0.52	27.2	0.21-0.34
<i>Modern (i.e., cement blocks, bricks)</i>	54.3	0.44-0.65	65.5	0.59-0.72
House has holes in the wall, <i>n</i> (%)	46.2	0.35-0.56	34	0.28-0.41
Floor material, <i>n</i> (%)				
<i>Natural (i.e., ground, clay floor)</i>	58.5	0.48-0.69	38.3	0.32-0.45
<i>Rudimentary (i.e., wood)</i>	0	0-0.04	1.4	0.003-0.04
<i>Modern (i.e., cement, brick, tile)</i>	41.5	0.31-0.52	60.3	0.53-0.67
Roof material, <i>n</i> (%)				
<i>Natural (i.e., grass, leaves, or no roof)</i>	8.5	0.04-0.16	4.8	0.02-0.09
<i>Rudimentary (i.e., wood, bamboo)</i>	6.4	0.02-0.13	3.3	0.01-0.07
<i>Modern (i.e., zinc, asbestos)</i>	85.1	0.76-0.92	91.9	0.87-0.95
Eave open, <i>n</i> (%)	42.6	0.32-0.53	33.7	0.27-0.40
Do windows close, <i>n</i> (%)				
<i>No</i>	40.45	0.30-0.51	25.8	0.20-0.32
<i>Yes – totally closed</i>	22.3	0.14-0.32	20.1	0.15-0.26
<i>Yes – partially closed</i>	37.2	0.27-0.48	54.1	0.47-0.61
Vector control measure used, <i>n</i> (%)				

<i>Drains water around the house</i>	17	0.10-0.26	19.6	0.14-0.26
<i>Cuts the grass, keeps lawn clean</i>	84	0.75-0.91	86.6	0.81-0.91
<i>Burns oils or mosquito coils</i>	16	0.09-0.25	14.8	0.10-0.20
<i>Uses insecticides outside of the house</i>	7.4	0.03-0.15	10	0.06-0.15
<i>Nothing</i>	6.4	0.02-0.13	4.3	0.02-0.08
<b>Environment Level</b>				
Landcover, <i>n</i> (%)				
<i>Woody Savannas (8)</i>	37.2	0.27-0.48	36.4	0.30-0.43
<i>Savannas (9)</i>	29.8	0.21-0.41	39.2	0.33-0.46
<i>Grasslands (10)</i>	33	0.24-0.43	22	0.17-0.28
<i>Croplands (12)</i>	0	0-0.04	2.4	0.008-0.6
Elevation (meters), median	588	566-601	586	575-599
Evapotranspiration at 1-week lag (kg/m <sup>2</sup> /8day), median	219	189-245	202	174-268
Evapotranspiration at 2-week lag (kg/m <sup>2</sup> /8day), median	137	119-184	137	95-202
Land Surface Temp Day at 1-week lag (Celsius), median	35.63	35.01-37.4	35.27	34.87-37.01
Land Surface Temp Day at 2-week lag (Celsius), median	32.81	32.47-32.91	32.89	32.47-34.43
Land Surface Temp Night at 2-week lag (Celsius), median	22.73	22.57-22.99	22.79	22.49-22.99
NDVI, median	0.53	0.50-0.54	0.51	0.49-0.54
Land surface temp night (Celsius), 1- and 2-week lag, median	22.11	21.94-22.19	22.13	22.05-22.19

191 The most common head of household occupation across malaria status groups was Farmer  
192 (52.1% among individuals who had a positive RDT and 38% among individuals that had a  
193 negative RDT). The most common highest education level for the head of household among  
194 individuals that had a positive RDT result was Primary school 1 and 2 (41.5%), whereas among  
195 individuals that had a negative RDT result the most common highest education level for the  
196 head of household was Technical School or University (35.4%). Based on the 95% CIs, there is a  
197 statistically significant difference between RDT result groups with regard to the percentage of  
198 individuals that lived in a house with natural or modern floor material.

199

#### 200 *Association between environmental factors and malaria infection*

201

202 Based on the results of the univariate analyses, the following variables were included as  
203 confounders in the final models assessing the association between environmental factors and  
204 malaria infection (Table 2): head of household occupation, time of occupation, head of  
205 household highest level of education, whether the walls had holes, floor material, whether the  
206 windows close, age, and whether they slept under an ITN the previous night. Interactions  
207 between the environmental predictors were assessed, however none were statistically  
208 significant and thus were not included in the final models. Whether there were holes in the wall  
209 was found to be an effect modifier for the relationship between landcover and a positive rapid  
210 diagnostic test result and thus was included in the final model for landcover as an interaction  
211 term.

212

213 Table 2: Univariate analyses of individual, household, and environmental level variables

214

Variable	Odds Ratio	95% CI
INDIVIDUAL LEVEL		
Age	0.97	0.95-0.99
Sex	0.94	0.57-1.54
Slept under ITN the previous night	0.59	0.35-0.96
HOUSEHOLD LEVEL		
Head of household occupation <sup>1</sup>		
Outdoor	1.65	1.01-2.69
Occupation Time <sup>2</sup>		
Full-time	0.41	0.25-0.68
Education <sup>3</sup>		
Primary School 2 <sup>nd</sup> Level	0.18	0.07-0.50
Secondary School 1 <sup>st</sup> Level	0.34	0.17-0.70
Secondary School 2 <sup>nd</sup> Level	0.25	0.12-0.52
Technical School or University	0.60	0.21-1.74
Never attended school	0.45	0.18-1.10
Wall material <sup>4</sup>		
Rudimentary	2.61	0.81-8.47
Modern	1.36	0.19-1.33
Walls have holes	1.74	1.06-2.88
Floor material <sup>5</sup>		

Modern	0.43	0.26-0.71
Roof material <sup>6</sup>		
Rudimentary	1.07	0.26-4.49
Modern	0.51	0.19-1.33
Eaves open	1.52	0.92-2.51
Do windows close <sup>7</sup>		
Yes, completely	0.71	0.36-1.39
Yes, partially	0.42	0.24-0.73
Vector control measure used		
Drains water around the house	0.86	0.46-1.63
Cuts the grass, keeps lawn clean	0.79	0.40-1.57
Burns oils or mosquito coils	1.12	0.57-2.20
Uses insecticides outside of the house	0.74	0.30-1.80
Nothing	1.55	0.54-4.50
ENVIRONMENT LEVEL		
Landcover <sup>8</sup>		
Grassy savannas	1.35	0.75-2.43
Grasslands or croplands	1.78	0.96-3.31
Elevation	0.99	0.98-1.01
Evapotranspiration (1-week lag)	1	0.99-1.0
Evapotranspiration (2-week lag)	1	0.99-0.99
Land Surface Temperature,	1	1.00-1.01

day (1-week lag)		
Land Surface Temperature, day (2-week lag)	1	0.99-1.00
Land Surface Temperature, night (2-week lag)	1	0.98-1.01
NDVI	1	0.99-1.0

215 <sup>1</sup>Compared to indoor occupations; <sup>2</sup>compared to seasonal or part-time; <sup>3</sup>compared to lowest level of  
 216 education; <sup>4</sup>compared to natural materials; <sup>5</sup>compared to natural materials, nobody reported using  
 217 rudimentary materials; <sup>6</sup>compared to natural materials; <sup>7</sup>compared to not at all; <sup>8</sup>compared to savannas  
 218  
 219 Of the environmental variables assessed, only landcover was found to be strongly associated  
 220 with having a positive RDT result for malaria (Table 3). Individuals that lived in grassy savannas  
 221 had 1.55 times the odds of having a positive rapid diagnostic test result compared to individuals  
 222 who lived in other savannas (OR = 1.55, 95%CI: 0.7-3.7). This result was not statistically  
 223 significant. The estimated effect of living in grasslands or croplands was found to vary  
 224 depending on whether the house had holes in the wall (Table 4). Individuals who lived in  
 225 grasslands or croplands and who had holes in their walls had 5.52 times the odds of having a  
 226 positive RDT result compared to individuals who did not live in these conditions (OR = 5.52, p-  
 227 value = 0.035). This result was statistically significant.

228  
 229 Table 3: Final environmental models adjusted for individual and household level characteristics

Variable	Odds Ratio	P-value	95% CI
Landcover			
grassy savannas	1.55	0.316	0.7-3.7
grasslands or croplands	1.27	0.568	0.6-2.9



Elevation	0.985	0.127	0.97-1.0
Evapotranspiration (1-week lag)	1	0.465	0.999-1.0
Evapotranspiration (2-week lag)	1	0.085	0.9999-1.0
Land Surface Temperature, day (1-week lag)	1	0.058	0.9999-1.0
Land Surface Temperature, day (2-week lag)	1	0.318	0.995-1.0
Land Surface Temperature, night (2-week lag)	1.01	0.502	0.99-1.0
NDVI	1	0.019	1.0-1.0

231

232 Table 4: Landcover Model with Holes in Walls Included as Interaction Term

233

Variable	Odds Ratio	P-value	95% CI
Landcover			
Grasslands or croplands:: holes in walls	5.52	0.035	1.13-26.9

234

## 235 Discussion

236

237 Risk factor surveillance is an important tool for controlling the spread of infectious diseases and  
 238 in the case of malaria, transmission is greatly influenced by environmental factors. Overall,

239 environmental aspects have not received much attention from malaria control programs.  
240 However, understanding how environmental changes impact malaria transmission and  
241 infection at the household level could enable local governments to better allocate their  
242 resources and optimize disease surveillance and control strategies. We aimed to evaluate the  
243 effects of climate and environmental factors on malaria risk at the household level in  
244 Sussundenga District, Mozambique. The results from these spatio-temporal models provide  
245 information on local characteristics of transmission that can be used to develop frameworks for  
246 mitigating malaria transmission that are tailored to this region.  
247  
248 Of the environmental factors that were investigated in this study, landcover was found to be  
249 most strongly associated with malaria risk. Moreover, we found that the estimated effect of  
250 grassland or cropland landcover on malaria risk varies depending on whether the house has  
251 holes in the wall. Thus, housing improvements that could help reduce malaria transmission may  
252 include sealing holes in the walls, particularly when the house is located in a grassland or  
253 cropland area. This intervention could have a long-term direct benefit that may even go beyond  
254 preventing malaria transmission and also affect the transmission of dengue, chikungunya, and  
255 other vector-borne diseases. Studies looking at environmental risk factors of malaria infection  
256 have found significant associations between infection and temperature and humidity.(9, 10) We  
257 did not find an association between malaria infection and evapotranspiration (proxy for  
258 humidity) nor land surface temperature day/night at the district level, which may suggest that  
259 malaria-environment relationships are contingent on the scale of analysis.  
260

261 There were some limitations to this study. The MODIS satellite is an optical sensor which means  
262 that it cannot observe the surface when cloud cover is present. As a result, there were gaps in  
263 the night surface land surface temperature data that we were able to obtain, which is why we  
264 ultimately could not assess this variable at a 1-week lag. Additionally, pixels that are partially  
265 covered or contaminated by clouds may still have been present in the data which could have  
266 affected the study results. This limitation could be addressed in future studies by integrating  
267 locally collected environmental data with the satellite data. Lastly, the short time period of the  
268 study is a limitation as we could not assess the association between these environmental  
269 factors and malaria status across seasons.

270

## 271 **Conclusion**

272

273 This study reinforces the applicability of the use of remote-sensing data which is available at  
274 appropriate spatial and temporal resolution for risk mapping of malaria in areas where weather  
275 data is not reliable and readily available. Using remote-sensing data, we assessed the  
276 association between key environmental variables and malaria infection at the household level  
277 in Sussundenga District, Mozambique. Landcover was found to be most strongly associated  
278 with malaria risk, and this association varied depending on whether the house had holes in the  
279 wall. These results can be used to develop frameworks for mitigating malaria transmission that  
280 are tailored to this region, such as focusing on housing improvements, particularly in grassland  
281 and cropland communities.

282

283 **Conflict of Interest**

284

285 The authors declare that the research was conducted in the absence of any commercial or  
286 financial relationships that could be construed as a potential conflict of interest.

287

288 **Author Contributions**

289

290 AS conducted the sourcing of the environmental data, the merging of this data with the  
291 epidemiological data, conducted the statistical analyses, and drafted the manuscript. JLF  
292 trained and supervised data collection and implementation of the study. ABF, VM, and AN  
293 conducted data collection and management as well as community engagement. DEE assisted in  
294 the design of study tools, sample selection, and data management. KMS designed the study,  
295 implemented the survey used to collect the epidemiological data, and edited and revised the  
296 manuscript.

297

298 **Funding**

299

300 This study was funded by a SEED grant from the University of Minnesota Center for Global  
301 Health and Social Responsibility.

302

303 **Acknowledgements**

304

305 The authors acknowledge the generous funding from the Center for Global Health and Social  
306 Responsibility to complete this study. We also thank the cooperation from the Sussundenga  
307 District Health Office, the Manica Provincial Health Office, and the Mozambique Ministry of  
308 Health for their collaboration on the study. We also thank the community of Sussundenga  
309 village and all study participants for their time and participation in this work.

310

### 311 **Data Availability Statement**

312

313 Deidentified data will be made available upon request to the corresponding author.

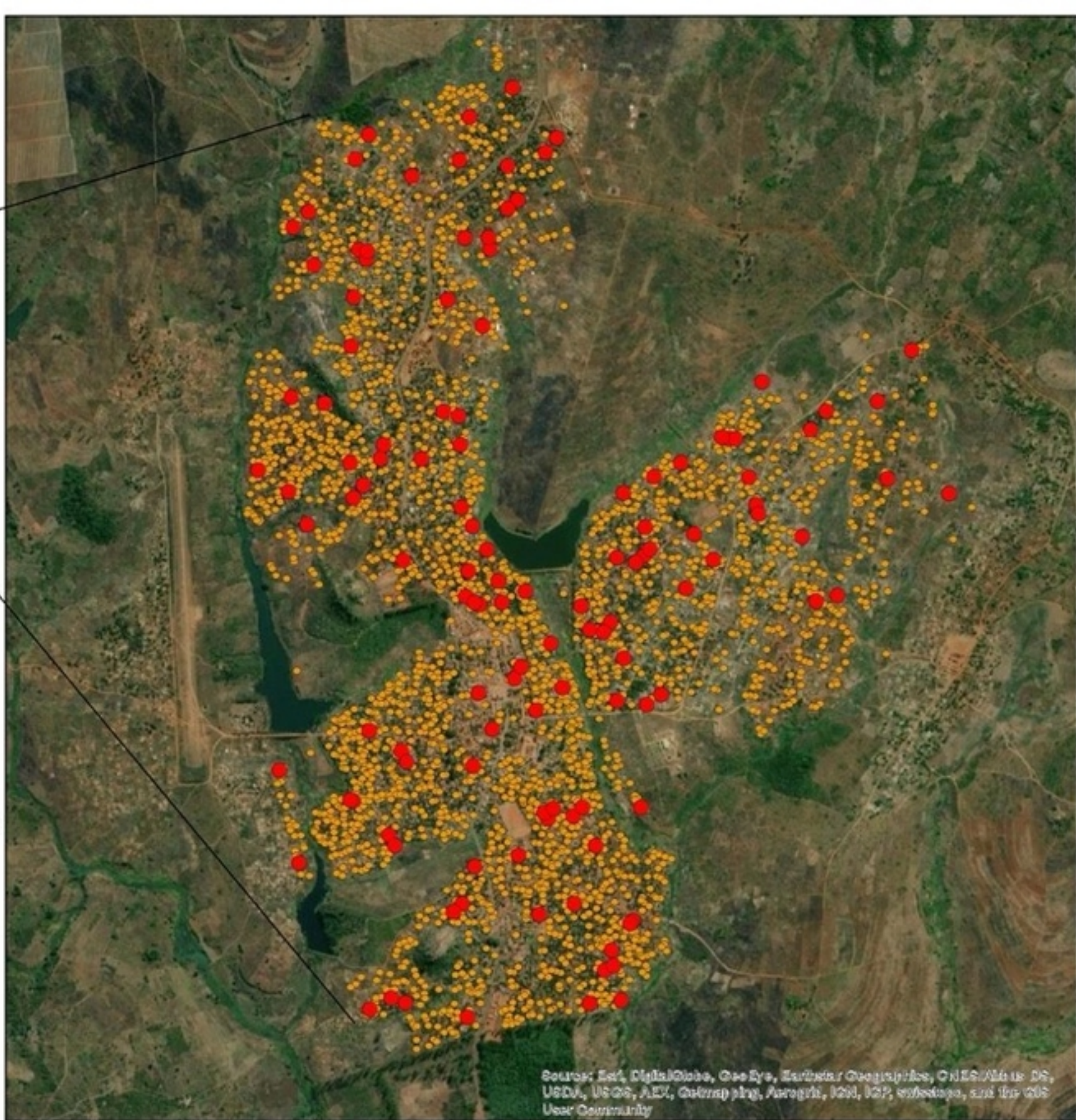
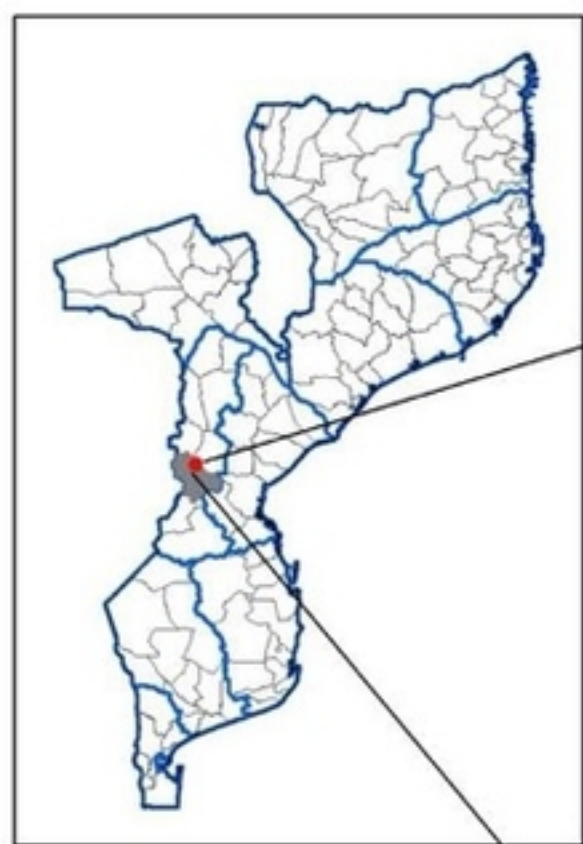
314

### 315 **References**

316

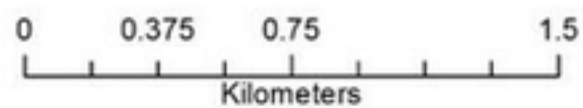
- 317 1. World Malaria Report 2022. Geneva: World Health Organization; 2022. Contract No.:  
318 978 92 4 006489 8.
- 319 2. Hoshen MB, Morse AP. A weather-driven model of malaria transmission. *Malar J*.  
320 2004;3:32.
- 321 3. Notre Dame Global Adaptation Initiative: Country Index. University of Notre Dame;  
322 2020.
- 323 4. Ferrao J, Earland D, Novela A, Mendes R, Ballat M, Tungadza A, et al. Modelling  
324 sociodemographic factors that affect malaria prevalence in Sussundenga, Mozambique: a cross-  
325 sectional study. *F1000Res*. 2022;11:185.

- 326 5. Tusting LS, Ippolito MM, Willey BA, Kleinschmidt I, Dorsey G, Gosling RD, et al. The  
327 evidence for improving housing to reduce malaria: a systematic review and meta-analysis.  
328 Malar J. 2015;14:209.
- 329 6. Ferrão JL, Earland D, Novela A, Mendes R, Tungadza A, Searle KM. Malaria Temporal  
330 Variation and Modelling Using Time-Series in Sussundenga District, Mozambique. Int J Environ  
331 Res Public Health. 2021;18(11).
- 332 7. Running S. MOD16A2v006: MODIS/Terra Net Evapotranspiration 8-day L4 Global 500m  
333 SIN Grid [Available from: <https://lpdaac.usgs.gov/products/mod16a2v006/>].
- 334 8. Earland DE, Bibe AF, Novela A, Ferrão J, Searle KM. Plasmodium falciparum community  
335 prevalence and health-seeking behaviours in rural Sussundenga District, Mozambique. Malar J.  
336 2022;21(1):305.
- 337 9. Colón-González FJ, Sewe MO, Tompkins AM, Sjödin H, Casallas A, Rocklöv J, et al.  
338 Projecting the risk of mosquito-borne diseases in a warmer and more populated world: a multi-  
339 model, multi-scenario intercomparison modelling study. Lancet Planet Health. 2021;5(7):e404-  
340 e14.
- 341 10. Endo N, Eltahir EAB. Environmental Determinants of Malaria Transmission Around the  
342 Koka Reservoir in Ethiopia. Geohealth. 2018;2(3):104-15.
- 343



## Legend

- Selected households
- Enumerated households



Source: Esri, DigitalGlobe, GeoEye, Earthstar Geographics, CNES/Airbus DS, USDA, USGS, AeroGRID, IGN, IGP, swisstopo, and the GIS User Community

## Study Area