

1            **Comparing reactions to COVID-19 and influenza vaccinations: data from patient self-**  
2                            **reporting, smartwatches and electronic health records**  
3

4            Matan Yechezkel, MS<sup>1</sup>, Gary Qian, MS<sup>2</sup>, Yosi Levi, MS<sup>1</sup>, Nadav Davidovitch, PhD<sup>3</sup>, Erez  
5                            Shmueli, PhD<sup>1,4\*</sup>, Dan Yamin, PhD<sup>1,5\*</sup>, Margaret L. Brandeau, PhD<sup>2\*</sup>  
6

7                            June 23, 2023  
8

9            <sup>1</sup>Department of Industrial Engineering, Tel Aviv University, Tel Aviv, Israel

10           <sup>2</sup>Department of Management Science and Engineering, Stanford University, Stanford,  
11           California, United States of America

12           <sup>3</sup>School of Public Health, Faculty of Health Sciences, Ben Gurion University of the Negev,  
13           Beersheva 84105, Israel

14           <sup>4</sup>MIT Media Lab, Cambridge, MA, USA.

15           <sup>5</sup>Center for Combatting Pandemics, Tel Aviv University, Tel Aviv, Israel.  
16

17           \*Contributed equally  
18

19           **Address correspondence to:** Matan Yechezkel, [matany92@gmail.com](mailto:matany92@gmail.com)

20  
21           **Keywords:** COVID-19 vaccine, COVID-19 booster vaccine, BNT162b2, adverse effects,  
22           wearable sensors, influenza vaccine, seasonal influenza, vaccine reactions  
23

24  
25  
26  
27

## 28 **SUMMARY**

29 **Background** Public reluctance to receive COVID-19 vaccination is due in large part to safety  
30 concerns. We compare the safety profile of the BNT162b2 COVID-19 booster vaccine to that of  
31 the seasonal influenza vaccine, which has been administered for decades with a solid safety  
32 record and a high level of public acceptance.

33 **Methods** We study a prospective cohort of 5,079 participants in Israel (the PerMed study) and a  
34 retrospective cohort of 250,000 members of Maccabi Healthcare Services. We examine reactions  
35 to BNT162b2 (Pfizer-BioNTech) mRNA COVID-19 booster vaccinations and to influenza  
36 vaccination. All prospective cohort participants wore a Garmin Vivosmart 4 smartwatch and  
37 completed a daily questionnaire via smartphone. For the prospective cohort, we compare pre-  
38 vaccination (baseline) and post-vaccination smartwatch heart rate data and a stress measure  
39 based on heart rate variability, and we examine symptom severity from patient self-reports. For  
40 the retrospective cohort, we examine electronic health records (EHRs) for the existence of 28  
41 potential adverse events during the 28-day period before and after each vaccination.

42 **Findings** In the prospective cohort, 1,905 participants received COVID-19 vaccination; 899  
43 received influenza vaccination. Focusing on those who received both vaccines yielded a total of  
44 689 participants in the prospective cohort and 31,297 members in the retrospective  
45 cohort. *Questionnaire analysis:* For the COVID-19 vaccine, 39.7% [95% CI 36.4%–42.9%] of  
46 individuals reported no systemic reaction vs. 66.9% [95% CI 63.4%–70.3%] for the influenza  
47 vaccine. Individuals reporting a more severe reaction after influenza vaccination tended to  
48 likewise report a more severe reaction after COVID-19 vaccination ( $r=0.185$ ,  $p<0.001$ ).  
49 *Smartwatch analysis:* A statistically significant increase in heart rate and stress measure occurred  
50 during the first 3 days after COVID-19 vaccination, peaking 22 hours after vaccination with a

51 mean increase of 4.48 (95% CI 3.94–5.01) beats per minute and 9.34 (95% CI 8.31–10.37) units  
52 in the stress measure compared to baseline. For influenza vaccination, we observed no changes  
53 in heart rate or stress measures. In paired analysis, the increase in both heart rate and stress  
54 measure for each participant was higher (p-value < 0.001) for COVID-19 vaccination than for  
55 influenza vaccination in the first 2 days after vaccination. On the second day after vaccination,  
56 participants had 1.5 (95% CI 0.68–2.20) more heartbeats per minute and 3.8 (95% CI 2.27–5.22)  
57 units higher stress measure, compared to their baseline. These differences disappeared by the  
58 third day after vaccination. *EHR analysis:* We found no elevated risk of non-COVID-19 or -  
59 influenza hospitalization following either vaccine. COVID-19 vaccination was not associated  
60 with an increased risk of any of the adverse events examined. Influenza vaccination was  
61 associated with an increased risk of Bell’s palsy (1.3 [95% CI 0.3–2.6] additional events per  
62 10,000 people).

63 **Interpretation** The more pronounced side effects after COVID-19 vaccination compared to  
64 influenza vaccination may explain the greater concern regarding COVID-19 vaccines.  
65 Nevertheless, our findings support the safety profile of both vaccines, as the reported side effects  
66 and physiological reactions measured by the smartwatches faded shortly after inoculation, and no  
67 substantial increase in adverse events was detected in the retrospective cohort.

68 **Funding** This work was supported by the European Research Council, project #949850, and a  
69 Koret Foundation gift for Smart Cities and Digital Living.

70

71

## 72 **RESEARCH IN CONTEXT**

### 73 **Evidence before this study**

74 The unprecedented global impact of COVID-19 led to the rapid development and deployment of  
75 vaccines against the virus, including vaccines using novel mRNA technology. Despite the  
76 promising effectiveness of mRNA vaccines in preventing severe outcomes of COVID-19,  
77 concerns have been raised regarding the safety profile of these new vaccines. These concerns led  
78 to a notable global public reluctance to become vaccinated. By contrast, the seasonal influenza  
79 vaccine has been administered for decades with a well-established safety record and a high level  
80 of public acceptance. We searched Google Scholar, PubMed, and preprint services (including  
81 medRxiv, bioRxiv, and SSRN) for studies comparing the safety profile of the two vaccines  
82 between March 1, 2023 (our study’s launch) and May 30, 2023, with no language restrictions,  
83 using the terms “safety of” AND (“COVID-19” OR “SARS-CoV-2”) AND (“vaccine” OR  
84 “BNT162b2 (Pfizer–BioNTech) mRNA vaccine”) AND “compared to” AND (“Influenza” OR  
85 “seasonal influenza” OR “flu”) AND “vaccine”. We found a study that compared the safety  
86 profile of the mRNA COVID-19 vaccine among 18,755 recipients with 27,895 recipients of the  
87 seasonal influenza vaccine using the WHO international database. The authors found a different  
88 safety pattern between the two vaccines with more systematic reactions following inoculation of  
89 the COVID-19 vaccine. Additionally, COVID-19 vaccines were associated with a higher risk of  
90 cardiovascular adverse events, while the influenza vaccine was associated with a higher risk of  
91 neurological adverse events. The remaining studies identified in our search compared the  
92 simultaneous administration of both vaccines to the administration of only COVID-19 vaccines.  
93 None of the studies conducted a paired analysis that compared reactions post-influenza  
94 vaccination and post-COVID-19 vaccination for the same individual; none examined the extent

95 of physiological reaction (in terms of heart rate and heart rate variability) following the  
96 administration of COVID-19 or seasonal influenza vaccines; and none examined a cohort of  
97 individuals with data from before and after vaccination episodes or presented a comprehensive  
98 analysis to address concerns regarding the existence of potential rare adverse events following  
99 vaccination.

#### 100 **Added value of this study**

101 We studied a prospective cohort of 5,079 participants in Israel (the PerMed study) from October  
102 31, 2020 to September 30, 2022 and a retrospective cohort of 250,000 members of Maccabi  
103 Healthcare Services from July 31, 2021 and March 1, 2023. We examined reactions to  
104 BNT162b2 (Pfizer-BioNTech) mRNA COVID-19 vaccination (third or fourth shot) and to  
105 influenza vaccination. We compared the extent of reactions at the individual level, among  
106 individuals who received both vaccines separately. While the self-reported data and the  
107 continuous physiological measures from smartwatches revealed a higher rate of reactions  
108 following COVID-19 vaccination, these reactions faded soon after inoculation. We found no  
109 increase in risk of rare adverse events for either vaccine. We found a weak, albeit significant,  
110 correlation in the severity of the symptoms for the two vaccines ( $r=0.185$ ,  $p<0.001$ ): individuals  
111 who reported a more severe reaction after influenza vaccination tended to likewise report a more  
112 severe reaction after COVID-19 vaccination. We found no elevated risk of non-COVID-19 or -  
113 influenza hospitalization following the administration of either vaccine. COVID-19 vaccination  
114 was not associated with increased risk of any of the adverse events examined. Influenza  
115 vaccination was associated with an increased risk of Bell's palsy (1.3 [95% CI 0.3–2.6]  
116 additional events per 10,000 people).

#### 117 **Implications of all the available evidence**

118 Our study demonstrates the importance of accounting for continuous and objective surveillance  
119 of vaccines in both the clinical trial phase and the post-marketing phase, as it can aid in  
120 evaluating the safety profile of clinical trials and reduce vaccine hesitancy. The more pronounced  
121 side effects after COVID-19 vaccination compared to influenza vaccination may explain the  
122 greater concern regarding COVID-19 vaccines. Nevertheless, our findings support the safety  
123 profile of both vaccines, as the reported side effects and physiological reactions measured by the  
124 smartwatches faded shortly after inoculation, and no substantial increase in adverse events was  
125 detected in the retrospective cohort.  
126

## 127 INTRODUCTION

128 The unprecedented global impact of COVID-19 led to the rapid development and  
129 deployment of vaccines against the virus, including vaccines using novel mRNA technology.  
130 However, despite the promising safety profile and effectiveness of mRNA vaccines in preventing  
131 severe outcomes of COVID-19, there has been a notable global public reluctance to be  
132 vaccinated.<sup>1, 2</sup> For example, in the United States nearly 20% of the population has received no  
133 COVID-19 vaccine doses.<sup>3</sup> A key reason for COVID-19 vaccine hesitancy is concerns about the  
134 safety of the vaccine.<sup>4, 5</sup>

135 One strategy to address such concerns is by comparing the side effects of the mRNA  
136 vaccines to the side effects of the seasonal influenza vaccine, which has been administered for  
137 decades with a solid safety record and a high level of public acceptance. Hundreds of millions of  
138 vaccines for seasonal influenza and COVID-19 have been administered to date<sup>6, 7</sup> but  
139 information comparing the safety of these vaccines is limited.

140 Currently, information on vaccine side effects is primarily collected through self-  
141 reporting methods, but these methods may be subject to bias and underreporting. To address this  
142 issue and provide a more comprehensive assessment of vaccine safety, extensive, continuous,  
143 and detailed monitoring of physiological changes in vaccinated individuals is necessary.  
144 Wearable devices, such as smartwatches, offer a promising solution. They enable continuous,  
145 detailed monitoring of physiological changes in vaccinated individuals, which can help identify  
146 vaccine-associated adverse events more effectively than self-reporting alone.

147 Wearable sensors have been shown to detect subtle medical conditions, such as atrial  
148 fibrillation, based on irregular heartbeats.<sup>8</sup> Several studies have shown that heart metrics,  
149 including heart rate, heart rate variability, and resting heart rate, can indicate COVID-19

150 infection in the pre-symptomatic stage and thus can be used for real-time detection.<sup>9-11</sup> These  
151 heart metrics have been previously reported to correlate with subjective symptoms after the  
152 COVID-19 vaccine.<sup>12, 13</sup> In the context of COVID-19 vaccination, a number of studies using  
153 wearables have observed short-term changes in heart metrics following vaccination, even when  
154 such changes were not apparent to patients when self-reporting effects of vaccination.<sup>14-18</sup>

155 In this study, our goal is to evaluate the safety of mRNA COVID-19 booster vaccines by  
156 comparing their side effects with those of seasonal influenza vaccines, using self-reported data,  
157 physiological measurements from Garmin Vivosmart 4 smartwatches, and information from  
158 electronic health records (EHRs). We examined the short-term effects (lasting up to 42 days) of  
159 the BNT162b2 (Pfizer-BioNTech) mRNA COVID-19 booster vaccine and contrasted it with the  
160 seasonal influenza vaccine, by analyzing data from a prospective cohort of 5,079 participants in  
161 an observational trial, as well as a retrospective cohort of 250,000 randomly selected members  
162 from Maccabi Healthcare Services, Israel's second-largest healthcare provider (which serves  
163 about 25% of the population).

## 164 **METHODS**

### 165 **Cohorts**

166 **Prospective cohort** We studied a cohort of 5,079 participants from a prospective  
167 observational trial of individuals in the PerMed study<sup>14-17, 19</sup> who received a third or fourth  
168 BNT162b2 mRNA COVID-19 vaccine and a seasonal influenza vaccine between July 31, 2021  
169 and September 30, 2022 (Figure S2A, appendix p 13; see study protocol , appendix pp. 2-12)  
170 Participants filled out a daily questionnaire about clinical symptoms and wore a smartwatch that  
171 measured, among other factors, heart rate and heart rate variability-based stress.



172           Upon enrollment in the study, we gathered information on the participants' sex, age, and  
173 pre-existing clinical risk factors. These underlying medical conditions included diabetes,  
174 hypertension, heart disease, chronic pulmonary conditions, weakened immune system, cancer,  
175 kidney failure, and a body mass index (BMI) greater than 30 (BMI is determined by dividing a  
176 person's weight in kilograms by the square of their height in meters).

177           We paired observations so that we could compare vaccine reactions in each individual.  
178 Among the 5,079 participants in the prospective cohort, a total of 4,334 COVID-19 vaccine  
179 doses and 2,639 influenza vaccine doses were administered. For both types of vaccines, we had  
180 hourly smartwatch data on heart rate and a Garmin-computed stress measure based on heart rate  
181 variability (heart rate: 1,877 COVID-19 vaccine doses, 901 influenza vaccine doses; stress  
182 measure: 1,845 COVID-19 vaccine doses, 878 influenza vaccine doses) (Table S2 appendix  
183 p14). From these observations we extracted paired vaccine observations; these are observations  
184 for individuals who received both the COVID-19 vaccine (first or second booster) and at least  
185 one influenza vaccine.

186           **Retrospective cohort** For the retrospective cohort, we examined anonymized EHRs of  
187 250,000 randomly selected members of Maccabi Healthcare Services (Figure S2B, appendix p  
188 13; see study protocol, appendix pp. 2-12). Eligible members were individuals 18 years and older  
189 who received both a third or fourth BNT162b2 mRNA COVID-19 vaccine and a seasonal  
190 influenza vaccine between July 31, 2021 and March 1, 2023. Individuals who were not members  
191 of Maccabi Healthcare Services throughout the entire study period were excluded.

## 192 **Study Design**

193           **Prospective cohort** For the prospective cohort, participants were asked to complete a  
194 daily survey via the PerMed mobile application.<sup>19</sup> This survey compiled self-reported clinical

195 symptoms from participants, using a predefined list of reactions observed in the BNT162b2  
196 mRNA COVID-19 vaccine trial <sup>20</sup>, while also allowing participants to freely report any  
197 additional symptoms they experienced. The survey was crafted based on potential symptoms that  
198 may follow infections with infectious diseases and respiratory illnesses, drawing on the  
199 International Classification of Diseases, Ninth Revision, and Clinical Modification (ICD-9)  
200 codes related to influenza, influenza-like illnesses, acute respiratory infections, RSV (respiratory  
201 syncytial virus), group A streptococcus, and COVID-19.

202 Throughout the study, from the moment they were recruited until the end, participants  
203 wore a Garmin Vivosmart 4 smartwatch. The smartwatch data was used to estimate the effects of  
204 vaccination on physiological measures such as heart rate and stress levels. Stress levels,  
205 computed by Garmin, range from 1 to 100 and are classified into four categories: resting (1-25),  
206 low (26-50), medium (51-75), and high (76-100).<sup>21</sup> A higher stress level correlates with lower  
207 heart rate variability.<sup>22, 23</sup> Heart rate data (beats per minute) was collected in intervals of 15  
208 seconds while stress measurements were documented every three minutes.

209 Further information regarding the recruitment procedure, choice of smartwatch data  
210 analyzed, data collection architecture, and PerMed dashboard is provided elsewhere.<sup>16</sup>

211 **Retrospective cohort** For the retrospective cohort, we examined anonymized EHRs of  
212 the patients. These records are automatically collected from various clinics and medical facilities  
213 nationwide and updated monthly in Maccabi Healthcare Services databases. The data is coded,  
214 anonymized, viewed, stored, and processed within the research room of the Maccabi Healthcare  
215 Services. Maccabi Healthcare Services uses the ICD-9 classification with procedures coded  
216 using Current Procedural Terminology codes. We obtained demographic details for each patient,  
217 along with diagnoses linked to 28 possible adverse events, as specified by ICD-9 codes.

## 218 **Outcomes and Statistical Analysis**

219 **Prospective cohort** Though the majority of participants only filled out the survey once  
220 daily, if there were multiple entries by a single participant within a day, only the final entry was  
221 considered. Since questionnaires cannot be updated after submission, participants were instructed  
222 to submit a new response in case of filing errors; we assumed that the last entry provided a more  
223 accurate representation of the participant's entire day.

224 We defined a "baseline period" for each participant using their data (self-reported  
225 questionnaire and smartwatch) 7 days prior to vaccination. A participant's "baseline" refers to  
226 the last questionnaire they submitted during the baseline period and smartwatch data for the  
227 entire baseline period. If a symptom was reported following the vaccination and was not noted  
228 during the baseline period, we interpreted this to be a side effect of the vaccine. Participants who  
229 did not complete the questionnaire during the baseline period were omitted from our analysis  
230 because we could not determine whether their symptoms existed prior to vaccination. We  
231 compared the baseline period to 7 and 14 days after vaccination inclusive of vaccination day  
232 ("post-vaccination" period), for discrete and continuous metrics, respectively. Since the U.S.  
233 Centers for Disease Control and Prevention (CDC) advises that vaccine side effects typically  
234 disappear after a few days, our analysis concentrates on the first 72 hours post-vaccination.<sup>24</sup>

235 We included participants who (1) submitted the questionnaire at least once during the  
236 baseline period, (2) completed the questionnaire at least once within 72 hours after vaccination,  
237 (3) provided wearable device measurements during the same day-of-week and time-of-day  
238 during their post-vaccination and baseline periods, and (4) received both the seasonal influenza  
239 and COVID-19 vaccine.

240 We excluded participants who provided data for only one day (either during the baseline  
241 or post-vaccination periods), with an exception if the participant provided data for the same  
242 hours-of-day and days-of-week during the baseline and post-vaccination periods.

243 We differentiated participants based on their self-reported intensity of symptoms as  
244 recorded in a questionnaire during the 72 hours following each vaccination. Participants were  
245 grouped into “No Reaction,” “Mild Reaction,” or “Severe Reaction” categories, based on their  
246 most severe symptom reported in the 72 hours following each vaccination. Consequently, if a  
247 participant experienced a single severe symptom for a day, and mild symptoms for the remaining  
248 three days post-vaccination, they were designated as having a severe reaction. The severity  
249 categorization could vary for participants after each administered vaccine dose.

250 In alignment with the CDC<sup>25</sup> and the Pfizer clinical trial<sup>20</sup>, we categorized symptoms as  
251 follows:

- 252 • Mild symptoms: abdominal pain, feeling hot, back or neck pain, feeling cold, muscle  
253 pain, weakness, headache, dizziness, vomiting, sore throat, diarrhea, cough, leg pain, ear  
254 pain, loss of taste and smell, swelling of the lymph nodes, fast heartbeat, and  
255 hypertension;
- 256 • Severe symptoms: chest pain, dyspnea (shortness of breath), fever, confusion, and chills.

257 For participants who reported feeling hot and recorded their temperature, we divided them into  
258 two categories: above 38.9° C (fever) or below 38.9° C (feeling hot); in cases where the  
259 participant did not record their temperature, we assumed it to be below 38.9° C.

260 From the questionnaire data, we computed the proportion and corresponding 95%  
261 confidence interval (CI) of participants who reported experiencing each side effect in the post-  
262 vaccination period. The 95% CI for each side effect was calculated using a binomial distribution

263 Binom( $n,p$ ), where  $p$  = the proportion of participants reporting the symptom, and  $n$  = number of  
264 participants eligible to be included in the self-reported questionnaire analysis. In cases where  
265 participants received more than one dose of the COVID-19 or the seasonal influenza vaccine  
266 during the study period, and were eligible to be included for both inoculations, each self-reported  
267 event (i.e., specific symptoms or no symptoms) was considered as  $\frac{1}{\text{number of vaccine episodes}}$  event  
268 to avoid over counting.

269 For the continuous Garmin smartwatch data, we compared measurements from the post-  
270 vaccination period to the corresponding day-of-week and hour-of-day measurement from the  
271 baseline period at the individual level. For example, we compare a participant's Wednesday  
272 average 9 am heart rate with their previous Wednesday 9 am heart rate. If these data were not  
273 recorded (e.g., if a participant did not wear the smartwatch in the same period before and after  
274 vaccination), we excluded the participant from this analysis. Then, we aggregated each hour's  
275 differences divided by all participants to calculate a mean difference and the associated 95% CI.  
276 We present this analysis starting a week before and after vaccination. In cases where participants  
277 received more than one dose of the COVID-19 or the seasonal influenza vaccines during the  
278 study period, and were eligible to be included for both inoculations, we calculated the average  
279 differences over all inoculations.

280 We also compared the difference of physiological changes between COVID-19  
281 vaccination and seasonal influenza vaccination among individuals who received both vaccines.  
282 For each participant, we first calculated the daily mean changes in heart rate between the post-  
283 vaccination period and the baseline period. We did this separately for the mRNA COVID-19  
284 booster vaccine and the seasonal influenza vaccine. Then we calculated the difference between

285 these two mean values for each participant and each of the 7 days after inoculation. This is  
286 equivalent to a two-sided Welch's t-test, which does not assume equal population variance.

287 **Retrospective cohort** For each individual in the retrospective cohort who received both  
288 vaccines, we noted the existence in the EHR of 28 potential adverse events (Table S1, appendix  
289 pp 10-11) during the 28-day period before and after each vaccination. This set of adverse events  
290 was composed based on a previous large-scale study that examined the safety of the first and  
291 second (primary series) COVID-19 vaccine dose.<sup>26</sup>

292 We calculated the number of adverse events shown in patients' EHRs before and after  
293 each vaccine. Consistent with a previous study<sup>27</sup>, we chose a time interval of 28 days to evaluate  
294 the potential short-term effects of each of the vaccines separately. Similar to large cohort  
295 studies,<sup>16, 28</sup> we evaluated the risk differences using a self-as-control method that compared  
296 adverse events in the same patient in two periods: a baseline period of 28 days (from 35-8 days  
297 before vaccination) and a post-vaccination period of 28 days (0-27 days after vaccination). We  
298 used a 7-day buffer period between the baseline and post-vaccination periods in accordance with  
299 the guidelines of the Israeli Ministry of Health,<sup>29</sup> which recommend that an individual should not  
300 receive inoculation if suffering from any apparent infection with severe symptoms, including a  
301 fever higher than 38°C. This 7-day buffer period was also consistent with the assumption made  
302 by a large-scale safety study in which non-vaccinated individuals were not eligible to serve as  
303 controls if the person experienced any health event in the week before the follow-up period.<sup>26</sup>

304 During outpatient visits in Maccabi's clinics, past diagnoses also appear as part of the  
305 current visit's diagnoses. Thus, in line with the previous study, for each adverse event we  
306 omitted individuals who were previously diagnosed with the same event in the year prior to the  
307 baseline period.<sup>26</sup>

308 We conducted a pairwise comparison for each individual, calculating the risk difference  
309 between pre- and post-vaccination values, which we denote  $Y_{diff}^{i,j}$  for person  $i$  and event  $j$ . If an  
310 adverse event was recorded in the individual's medical records in the post-vaccination period  
311 (i.e., 0-27 days post-vaccination) but not in the pre-vaccination period (35-8 days pre-  
312 vaccination), then the event is potentially associated with the vaccine or a random event, and we  
313 set  $Y_{diff}^{i,j} = 1$ . If the converse was true and an adverse event appeared before vaccination but not  
314 after vaccination, the event is potentially a random event, and we set  $Y_{diff}^{i,j} = -1$ . If a specific  
315 event was reported in both the pre- and post-vaccination periods, we assumed the event is not  
316 associated with the vaccine and we set  $Y_{diff}^{i,j} = 0$ , and thus the individual was excluded from the  
317 analysis of event  $j$ . If an individual was found to be positive for COVID-19 during the post-  
318 vaccination period, we compared only the events recorded in the period between the inoculation  
319 and the recorded time of death and matched this period with the same time interval in the  
320 baseline period.

321 The risk difference for event  $j$  is the mean value of  $\bar{Y}_{diff}^{i,j}$  calculated over all vaccinated  
322 individuals. This approach mirrors the standard estimation of risk differences in exposed and  
323 unexposed groups<sup>30</sup>, while taking into account the paired nature of the samples. To calculate the  
324 95% CI for the difference without imposing any unknown distribution, we applied a non-  
325 parametric percentile bootstrap method with 10,000 repetitions, similar to previous safety  
326 studies<sup>26, 28</sup>. In case an individual received more than one inoculation of COVID-19 vaccine or  
327 more than one inoculation of the seasonal influenza vaccine, for each repetition we chose  
328 randomly one of inoculations for each vaccine type.

## 329 **Ethical Approval**

330           The prospective study was approved by MHS’ Helsinki institutional review board,  
331 protocol number 0122-20-MHS. All participants gave written informed consent to participate in  
332 the study and were advised both orally and in writing of the nature of the study. This study is part  
333 of a larger study (an observational clinical trial funded by a European Research Council grant)  
334 and is in accordance with the European Union General Data Protection Regulation: a cohort of  
335 5,000 participants are recruited, download a dedicated mobile application, receive smartwatches,  
336 grant access to their medical records, and are followed for two years. Since the retrospective data  
337 was pseudonymized, the Helsinki institutional review board approved the use of this cohort data  
338 without requiring specific consent from Maccabi Healthcare Services members (protocol number  
339 0122-20-MHS).

#### 340 **Role of the Funding Source**

341           The sponsor of the study had no role in the study’s design, data collection, data analysis  
342 and data interpretation, or in the writing of the report.



## 343 **RESULTS**

### 344 **Prospective Cohort**

#### 345 **Cohort characteristics**

346 A total of 2115 participants received either the COVID-19 vaccine or the influenza  
347 vaccine during the study period (Table 1). Among these participants, 1905 received the COVID-  
348 19 vaccine, while 899 received the influenza vaccine. In the paired sample of 689 participants  
349 receiving both vaccines, 355 (51.5%) were female, and age ranged from 20-85 years, with a  
350 median of 58. This is significantly higher than the median age in Israel, which is 30.5 years.<sup>31</sup>  
351 Among the 689 participants, 357 (51.8%) reported that they had an underlying medical condition  
352 and 177 (25.7%) had a BMI of 30 or greater.

353 When we paired observations for individuals who received both COVID-19 and  
354 influenza vaccines, we obtained 799 paired COVID-19 vaccine doses and 692 paired influenza  
355 vaccine doses for heart rate; and 779 paired COVID-19 vaccine doses and 672 paired influenza  
356 vaccine doses for the stress measure (Table S2, appendix p 14). These numbers are  
357 representative of 577 and 544 individuals with heart rate and stress data, respectively, who  
358 received both vaccines. Similarly, we had 881 paired daily self-reports on symptoms for 7 days  
359 pre- and post-COVID-19 vaccination and 727 pre- and post-influenza vaccination paired self-  
360 reports, corresponding to 621 individuals.

361 **Questionnaire analysis** For the COVID-19 vaccine, 39.7% [95% CI 36.4%–42.9%] of  
362 individuals reported no systemic reaction; for the influenza vaccine, this fraction was 66.9%  
363 [95% CI 63.4%–70.3%] (Figure 1). The most common reactions reported for the COVID-19  
364 vaccine were weakness (16.1% [95% CI 13.6%–18.5%] of vaccinated individuals), headache  
365 (13.1% [95% CI 10.9%–15.3%]), muscle pain (12.1% [95% CI 10.0%–14.3%]), fever (7.0%

366 [95% CI 5.3%–8.7%]), and chills (5.7% [95% CI 4.2%–7.3%]). The most common reactions  
367 reported for the influenza vaccine were weakness (7.3% [95% CI 5.5%–9.2%]), headache (5.3%  
368 [95% CI 3.7%–7.0%]), muscle pain (3.6% [95% CI 2.3%–5.1%]), feeling cold (3.5% [95% CI  
369 2.2%–5.0%]), and sore throat (3.0% [95% CI 1.8%–4.3%]).

370         We compared severity of symptoms for the 621 individuals who received both a COVID-  
371 19 and influenza vaccine and who self-reported symptoms for both (Figure S3, appendix p 16).  
372 Using Spearman’s rank correlation test we found a weak, albeit significant, correlation in the  
373 severity of the symptoms for the two vaccines ( $r=0.185$ ,  $p<0.001$ ). Specifically, individuals who  
374 reported a more severe reaction after influenza vaccination tended to likewise report a more  
375 severe reaction after COVID-19 vaccination. Of the 621 individuals, 278 (44.8%) reported no  
376 reaction to either vaccine, 173 (27.8%) reported no reaction to the influenza vaccine and a mild  
377 reaction to the COVID-19 vaccine, and 36 (5.8%) reported no reaction to the influenza vaccine  
378 and a severe reaction to the COVID-19 vaccine. Similarly, 58 individuals (9.3%) reported a mild  
379 reaction to both vaccines, 38 individuals (6.1%) reported a mild reaction to the influenza vaccine  
380 and no reaction to the COVID-19 vaccine, and 25 individuals (4.0%) reported a mild reaction to  
381 the influenza vaccine and a severe reaction to the COVID-19 vaccine. Only 5 individuals (0.8%)  
382 reported a severe reaction to both vaccines. Of the 621 individuals, 321 (54.9%) reported the  
383 same level of symptom severity for both vaccines, and 259 (41.7%) reported a higher level of  
384 symptom severity for the COVID-19 vaccine than for the influenza vaccine. Only 46 individuals  
385 (7.4%) reported a lower level of symptom severity for the COVID-19 vaccine than for the  
386 influenza vaccine.

387         **Wearables analysis** We examined mean pre- and post-vaccination differences in hourly  
388 heart rate and stress data for participants who received either the COVID-19 or influenza vaccine

389 (Figure 2). Following the administration of the COVID-19 vaccine, we identified a statistically  
390 significant increase in heart rate during the first three days compared to the baseline period. This  
391 increase peaked 22 hours after vaccination, with a mean difference of 4.48 (95% CI 3.94–5.01)  
392 more beats per minute compared to baseline. By the sixth day post-inoculation, heart rate levels  
393 returned to baseline. A similar trend was observed for stress data: the increase in stress measure  
394 was statistically significant with a peak 22 hours after vaccination and a mean increase of 9.34  
395 (95% CI 8.31–10.37) units in the stress measure. For influenza vaccination, no statistically  
396 significant changes in heart rate or the stress measure were observed.

397 To directly compare effects of the two vaccines we conducted a pairwise comparative  
398 analysis in which we examined daily mean changes in heart rate and the stress measure for  
399 individuals receiving both vaccines (Figure 3). For each such participant, we calculated the mean  
400 change in the indicator (either heart rate or stress) associated with COVID-19 vaccination  
401 compared to an individual's baseline levels minus the mean change in the indicator associated  
402 with influenza vaccination compared to the individual's baseline. Figure 3 shows that the  
403 increase in both heart rate and the stress measure for each participant was higher for COVID-19  
404 vaccination than for influenza vaccination in the first two days after vaccination, and that this  
405 increase is statistically significant ( $p$ -value  $< 0.001$ ). However, these differences were small: for  
406 example, in the second day after vaccination, mean heart rate was 1.5 (95% CI 0.68–2.20) beats  
407 per minute higher after COVID-19 vaccination than after influenza vaccination, compared to an  
408 individual's baseline, and mean stress was 3.8 (95% CI 2.27–5.22) units higher. Moreover, these  
409 differences disappeared by the third day after vaccination: for the third through seventh days  
410 after vaccination there were no statistically significant differences in changes in these two  
411 indicators for the COVID-19 vaccine compared to the influenza vaccine.

## 412 **Retrospective Cohort**

413 **Cohort characteristics** The retrospective cohort included 31,297 Maccabi members who  
414 received both vaccines during the study period. Of these individuals, 16,956 (54.2%) were  
415 female (Table 1). Age ranged from 12-103 years, with a median of 59. An underlying medical  
416 condition was listed in the medical record for 14,437 (45.8%) individuals, and 5,069 (16.2%) had  
417 a BMI of 30 or greater.

418 **EHR analysis** We found no elevated risk of non-COVID-19 or -influenza  
419 hospitalizations following the administration of either vaccine (Table 2). Among the 31,297  
420 individuals receiving both vaccines, 37 non-COVID-19 or -influenza hospitalizations occurred in  
421 the post-vaccination period compared to 51 in the baseline period for the COVID-19 vaccine  
422 and 32 non-COVID-19 or -influenza hospitalizations in the post-vaccination period compared to  
423 30 in the baseline period for the influenza vaccine, corresponding to risk differences of -4.5  
424 (95% CI: -10.2–1.3) and -0.6 (95% CI: -5.8–4.2) events per 10,000 vaccinated individuals,  
425 respectively.

426 We found no statistically significant increase in risk of the examined adverse events for  
427 COVID-19 vaccination (Table 2). Influenza vaccination was associated with an increased risk of  
428 Bell's palsy (1.3 [95% CI 0.3–2.6] additional events per 10,000 people), but was not associated  
429 with any other increase in risk of the examined adverse events.

## 430 **DISCUSSION**

431 Our analyses of data from patient questionnaires and smartwatches (in a prospective  
432 study) and from EHRs (in a retrospective study) comparing side effects of COVID-19 booster  
433 vaccination and seasonal influenza vaccination further support the safety of the first and second  
434 BNT162b2 booster vaccinations in eligible populations. In the patient questionnaires, more

435 individuals reported mild or severe effects after the COVID-19 vaccine than after the influenza  
436 vaccine (60.3% vs. 33.1%). We found a weak but significant positive correlation in the severity  
437 of the symptoms for the two vaccines. From the smartwatch data we identified a small but  
438 statistically significant increase in heart rate and the stress measure in the three days after  
439 COVID-19 vaccination, with levels returning to normal within six days after vaccination. For  
440 influenza vaccination, no statistically significant changes in these measures were observed.  
441 Although our paired analysis of reactions to COVID-19 and influenza vaccination suggested that  
442 the differences are significant, they were small and do not indicate lack of safety. Importantly,  
443 for the retrospective cohort, our analysis of EHRs – which are based on diagnoses of physicians  
444 in clinics and hospitals – identified no significant change in risk of adverse events after either  
445 vaccine, except for an elevated risk of Bell’s palsy after the influenza vaccine, a rare event. This  
446 finding is in line with a recent large-scale study that also found this positive association.<sup>32</sup>  
447 Despite this finding, the benefits of influenza vaccination in preventing severe outcomes far  
448 exceed this risk.

449         At both the aggregate level where we compared average changes in smartwatch measures  
450 pre- and post-vaccination for COVID-19 versus influenza vaccination, and at the individual level  
451 where we compared each patient’s changes in these measures, we found an increase in heart rate:  
452 4.48 (95% CI 3.94–5.01) beats per minute higher at the aggregate level, and 1.5 (95% CI 0.68–  
453 2.20) beats per minute higher 22 hours after vaccination when we performed a pairwise  
454 comparison. Previous studies have found that even small long-lasting increases in heart rate are  
455 associated with an increased risk of death.<sup>33, 34</sup> However, we found that the increases in heart rate  
456 disappeared within six days after vaccination. We also found increases in the heart rate  
457 variability-based stress measure. Some details are available on how the Garmin stress measure is

458 calculated,<sup>35, 36</sup> but the exact algorithm is proprietary and is not fully disclosed. Although the  
459 stress measures returned to baseline within six days after vaccination, the clinical significance of  
460 the short-term increases in the stress measure is unknown.

461 Our analysis has several limitations. First, we considered only BNT162b2 (Pfizer-  
462 BioNTech) mRNA vaccines. Second, median cohort age was greater than the median age in  
463 Israel, reflecting the fact that older individuals are more likely to receive both influenza  
464 vaccination and a COVID-19 booster shot than younger individuals. It is possible that younger  
465 individuals might have a different side effects profile than found in our cohorts. Third, the  
466 Garmin smartwatches are not medical-grade wearable devices, although previous studies have  
467 demonstrated the accuracy of smartwatches in measuring heart rates<sup>37, 38</sup> and our analysis  
468 considers relative heart rate values pre- and post-vaccination rather than absolute heart rate  
469 values.

470 Our analysis demonstrates the power of examining patient data from multiple sources.  
471 Although more individuals experienced side effects after COVID-19 vaccination than after  
472 influenza vaccination, as reflected both in patient self-reports and in smartwatch data, the  
473 differences in examined side effects detected by the smartwatches were small, the differences  
474 disappeared by three days after vaccination, and heart measures returned to their pre-vaccination  
475 baseline within six days after vaccination. Moreover, no statistically significant increase in the  
476 risk of adverse events, as reflected in EHRs, was associated with COVID-19 vaccination. Taken  
477 together, these findings support the safety of the first and second BNT162b2 (Pfizer-BioNTech)  
478 mRNA COVID-19 booster shots.

479

480

481 **Acknowledgments**

482 This work was supported by the European Research Council, project #949850, and a Koret  
483 Foundation gift for Smart Cities and Digital Living.

484

#### 485 **Authors' contributions**

486 Conception and design: DY, MY, ES and MLB. Collection and assembly of data: DY, MY, YL,  
487 and ES had access to the raw data and were responsible for verifying the data. Analysis and  
488 interpretation of the data: MY, DY, ES, YL, GQ, and MLB. Statistical analysis: MY, DY, ES  
489 and MLB. Drafting the article: MY, DY, ES, GQ and MLB. Critical revision of the article for  
490 important intellectual content: MY, DY, ES, GQ, ND and MLB. Final approval of the article: All  
491 authors. Obtaining funding: DY, ES, and MLB.

#### 492 **Declaration of Interests**

493 All authors declare no competing interests.

494

495 **Data sharing statements** According to this study's MHS's Helsinki and data utilization  
496 committees' guidelines, no patient-level data is to be shared outside the permitted researchers.  
497 Statistical analysis code will be available upon publication.

498 **References**

- 499 1. Dror AA, Eisenbach N, Taiber S, et al. Vaccine hesitancy: the next challenge in the fight  
500 against COVID-19. *Eur J Epidemiol.* Aug 2020;35(8):775-779.
- 501 2. Sallam M. COVID-19 vaccine hesitancy worldwide: a concise systematic review of  
502 vaccine acceptance rates. *Vaccines (Basel).* Feb 16 2021;9(2)
- 503 3. Johns Hopkins University Coronavirus Resource Center. Understanding vaccination  
504 progress. <https://coronavirus.jhu.edu/vaccines/international>
- 505 4. Machingaidze S, Wiysonge CS. Understanding COVID-19 vaccine hesitancy. *Nat Med.*  
506 Aug 2021;27(8):1338-1339.
- 507 5. Troiano G, Nardi A. Vaccine hesitancy in the era of COVID-19. *Public Health.* May  
508 2021;194:245-251.
- 509 6. International Federation of Pharmaceutical Manufacturers and Associations. Influenza.  
510 <https://ifpma.org/areas-of-work/improving-health-security/influenza/>
- 511 7. Bloomberg News. More than 12.7 billion shots given: COVID tracker.  
512 <https://www.bloomberg.com/graphics/covid-vaccine-tracker-global-distribution/>
- 513 8. Perez MV, Mahaffey KW, Hedlin H, et al. Large-scale assessment of a smartwatch to  
514 identify atrial fibrillation. *N Engl J Med.* Nov 14 2019;381(20):1909-1917.
- 515 9. Alavi A, Bogu GK, Wang M, et al. Real-time alerting system for COVID-19 and other  
516 stress events using wearable data. *Nat Med.* Jan 2022;28(1):175-184.
- 517 10. Mishra T, Wang M, Metwally AA, et al. Pre-symptomatic detection of COVID-19 from  
518 smartwatch data. *Nat Biomed Eng.* Dec 2020;4(12):1208-1220.
- 519 11. Zhu T, Watkinson P, Clifton DA. Smartwatch data help detect COVID-19. *Nat Biomed*  
520 *Eng.* Dec 2020;4(12):1125-1127.
- 521 12. Chapin-Bardales J, Gee J, Myers T. Reactogenicity following receipt of mRNA-based  
522 COVID-19 vaccines. *JAMA.* Jun 1 2021;325(21):2201-2202.
- 523 13. Mathioudakis AG, Ghrew M, Ustianowski A, et al. Self-reported real-world safety and  
524 reactogenicity of COVID-19 vaccines: a vaccine recipient survey. *Life (Basel).* Mar 17  
525 2021;11(3)
- 526 14. Gepner Y, Mofaz M, Oved S, et al. Utilizing wearable sensors for continuous and highly-  
527 sensitive monitoring of reactions to the BNT162b2 mRNA COVID-19 vaccine. *Commun*  
528 *Med.* 2022;2(1):27.



- 529 15. Mofaz M, Yechezkel M, Guan G, et al. Self-reported and physiological reactions to the  
530 third BNT162b2 mRNA COVID-19 (booster) vaccine dose. *Emerg Infect Dis*.  
531 2022;28(7):1375-1383.
- 532 16. Yechezkel M, Mofaz M, Painsky A, et al. Safety of the fourth COVID-19 BNT162b2  
533 mRNA (second booster) vaccine: a prospective and retrospective cohort study. *Lancet*  
534 *Respir Med*. Feb 2023;11(2):139-150.
- 535 17. Guan G, Mofaz M, Qian G, et al. Higher sensitivity monitoring of reactions to COVID-19  
536 vaccination using smartwatches. *NPJ Digit Med*. Sep 9 2022;5(1):140.
- 537 18. Quer G, Gadaleta M, Radin JM, et al. Inter-individual variation in objective measure of  
538 reactogenicity following COVID-19 vaccination via smartwatches and fitness bands. *NPJ*  
539 *Digit Med*. Apr 19 2022;5(1):49.
- 540 19. Oved S, Mofaz M, Lan A, et al. Differential effects of COVID-19 lockdowns on well-  
541 being: interaction between age, gender and chronotype. *J R Soc Interface*. Jun  
542 2021;18(179):20210078.
- 543 20. Polack FP, Thomas SJ, Kitchin N, et al. Safety and efficacy of the BNT162b2 mRNA  
544 Covid-19 vaccine. *N Engl J Med*. Dec 31 2020;383(27):2603-2615.
- 545 21. Garmin Support Center. What is the stress level feature on my Garmin watch? Jul 27, 2021.  
546 Accessed Jul 27, 2021. [https://support.garmin.com/en-](https://support.garmin.com/en-US/?faq=WT9BmhjacO4ZpxbCc0EKn9)  
547 [US/?faq=WT9BmhjacO4ZpxbCc0EKn9](https://support.garmin.com/en-US/?faq=WT9BmhjacO4ZpxbCc0EKn9)
- 548 22. Kim HG, Cheon EJ, Bai DS, Lee YH, Koo BH. Stress and heart rate variability: a meta-  
549 analysis and review of the literature. *Psychiatry Investig*. Mar 2018;15(3):235-245.
- 550 23. Pereira T, Almeida PR, Cunha JPS, Aguiar A. Heart rate variability metrics for fine-  
551 grained stress level assessment. *Comput Methods Programs Biomed*. Sep 2017;148:71-80.
- 552 24. Centers for Disease Control and Prevention. Possible side effects after getting a COVID-19  
553 vaccine. Accessed May 9, 2022. [https://www.cdc.gov/coronavirus/2019-](https://www.cdc.gov/coronavirus/2019-ncov/vaccines/expect/after.html)  
554 [ncov/vaccines/expect/after.html](https://www.cdc.gov/coronavirus/2019-ncov/vaccines/expect/after.html)
- 555 25. Centers for Disease Control and Prevention. Pfizer-BioNTech COVID-19 vaccine  
556 overview and safety. Accessed Jul 14, 2021. [https://www.cdc.gov/coronavirus/2019-](https://www.cdc.gov/coronavirus/2019-ncov/vaccines/different-vaccines/Pfizer-BioNTech.html)  
557 [ncov/vaccines/different-vaccines/Pfizer-BioNTech.html](https://www.cdc.gov/coronavirus/2019-ncov/vaccines/different-vaccines/Pfizer-BioNTech.html)
- 558 26. Barda N, Dagan N, Ben-Shlomo Y, et al. Safety of the BNT162b2 mRNA Covid-19  
559 vaccine in a nationwide setting. *N Engl J Med*. Sep 16 2021;385(12):1078-1090.
- 560 27. Patone M, Mei XW, Handunnetthi L, et al. Risks of myocarditis, pericarditis, and cardiac  
561 arrhythmias associated with COVID-19 vaccination or SARS-CoV-2 infection. *Nat Med*.  
562 Feb 2022;28(2):410-422.

- 563 28. Yamin D, Yechezkel M, Arbel R, et al. Safety of monovalent and bivalent BNT162b2  
564 mRNA COVID-19 vaccine boosters in at-risk populations in Israel: a large-scale,  
565 retrospective, self-controlled case series study. *Lancet Infect Dis*. Jun 20 2023;Epub ahead  
566 of print
- 567 29. Israeli Ministry of Health. Coronavirus (COVID-19) vaccines guidelines. Jan 1, 2023 (in  
568 Hebrew). Accessed Jan 17, 2023.  
569 [https://www.health.gov.il/UnitsOffice/HD/PH/epidemiology/td/docs/365\\_Corona.pdf](https://www.health.gov.il/UnitsOffice/HD/PH/epidemiology/td/docs/365_Corona.pdf)
- 570 30. Rothman KJ. *Epidemiology*: An Introduction. 2nd ed. Oxford University Press; 2012.
- 571 31. Worldometer. Israel Population. Accessed 2 May, 2023.  
572 <https://www.worldometers.info/world-population/israel-population/>
- 573 32. Hu C, Wei KC, Wang WH, Chang YC, Huang YT. Association of influenza vaccination  
574 with risk of Bell palsy among older adults in Taiwan. *JAMA Otolaryngol Head Neck Surg*.  
575 Jun 22 2023;
- 576 33. Chen XJ, Barywani SB, Hansson PO, et al. Impact of changes in heart rate with age on all-  
577 cause death and cardiovascular events in 50-year-old men from the general population.  
578 *Open Heart*. 2019;6(1):e000856.
- 579 34. Raisi-Estabragh Z, Cooper J, Judge R, et al. Age, sex and disease-specific associations  
580 between resting heart rate and cardiovascular mortality in the UK BIOBANK. *PLoS One*.  
581 2020;15(5):e0233898.
- 582 35. Firstbeat Technologies Ltd. Stress and recovery analysis method based on 24-hour heart  
583 rate variability. Accessed May 24, 2023.  
584 [https://assets.firstbeat.com/firstbeat/uploads/2015/11/Stress-and-](https://assets.firstbeat.com/firstbeat/uploads/2015/11/Stress-and-recovery_whitepaper_20145.pdf)  
585 [recovery\\_whitepaper\\_20145.pdf](https://assets.firstbeat.com/firstbeat/uploads/2015/11/Stress-and-recovery_whitepaper_20145.pdf)
- 586 36. Google Patents. Procedure for detection of stress by segmentation and analyzing a heart  
587 beat signal. Patent number US20050256414A1. Accessed May 24, 2023.  
588 <https://patents.google.com/patent/US20050256414A1/en>
- 589 37. Bent B, Goldstein BA, Kibbe WA, Dunn JP. Investigating sources of inaccuracy in  
590 wearable optical heart rate sensors. *NPJ Digit Med*. 2020;3:18.
- 591 38. Reddy RK, Pooni R, Zaharieva DP, et al. Accuracy of wrist-worn activity monitors during  
592 common daily physical activities and types of structured exercise: evaluation study. *JMIR*  
593 *Mhealth Uhealth*. Dec 10 2018;6(12):e10338.

594

595

596 **Table 1.** Description of cohort participants and self-reported reaction severity after COVID-19  
597 booster vaccination and influenza vaccination for individuals receiving both vaccines

	Prospective Cohort			Retrospective cohort
	COVID-19 Vaccine	Influenza Vaccine	COVID-19 and Influenza Vaccine	COVID-19 and Influenza Vaccine
Total (%)	1905 (100%)	899 (100%)	689 (100%)	31,297 (100%)
Sex				
Female (%)	964 (50.6%)	460 (51.2%)	355 (51.5%)	16,956 (54.2%)
Male (%)	940 (49.4%)	439 (48.8%)	334 (48.5%)	14,341 (45.8%)
Age (years)				
Mean	49.4	53	55.35	55.89
Std	15.50	15.19	14.71	19.05
Range	19-85	20 - 85	20 - 85	12-103
Median	52	55	58	59
Age range				
12-55 (%)	1116 (58.6%)	456 (50.7%)	293 (42.5%)	13,609 (43.5%)
>55 (%)	789 (41.4%)	443 (49.3%)	396 (57.5%)	17,688 (56.5%)
Underlying medical condition				
Yes (%)	765 (40.2%)	441 (49.1%)	357 (51.8%)	14,347 (45.8%)
No (%)	1092 (57.3%)	427 (47.5%)	305 (44.3%)	16,950 (54.2%)
Not reported	48 (2.5%)	31 (3.4%)	27 (3.9%)	NA
BMI				
≥30	413 (21.7%)	212 (23.6%)	177 (25.7%)	5,069 (16.2%)
<30	1485 (78.0%)	684 (76.1%)	509 (73.9%)	10,971 (35.1%)
Not reported	7 (0.3%)	3 (0.3%)	3 (0.4%)	15,257 (48.7%)
Population sector				
General Jewish	1848 (97.0%)	878 (97.7%)	671 (97.4%)	29,443 (94.1%)
Ultra-Orthodox Jewish	38 (2.0%)	15 (1.6%)	12 (1.7%)	1,006 (3.2%)
Arab	19 (1.0%)	6 (0.7%)	6 (0.9%)	847 (2.7%)

598  
599

**Table 2.** Adverse-events noted in the electronic health record during the 28-day period before and after each vaccination for the retrospective cohort

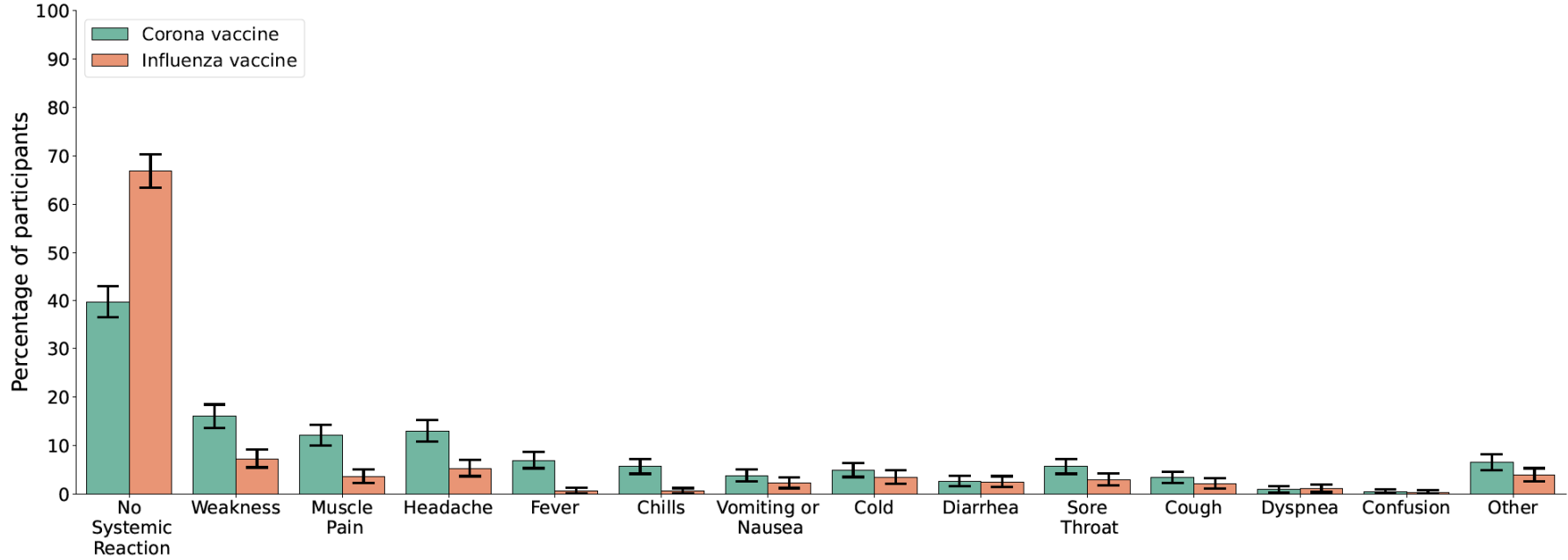
Event	COVID-19 Vaccine				Influenza Vaccine			
	Cohort <sup>*</sup>	Event before <sup>**</sup>	Event after <sup>**</sup>	Risk difference <sup>†</sup>	Cohort <sup>*</sup>	Event before <sup>**</sup>	Event after <sup>**</sup>	Risk difference <sup>†</sup>
	<i>No. of persons</i>	<i>No. of events</i>	<i>No. of events</i>	<i>No. of events/10,000 persons</i>	<i>No. of persons</i>	<i>No. of events</i>	<i>No. of events</i>	<i>No. of events/10,000 persons</i>
<b>Non-COVID-19 or -influenza hospitalizations</b>	31,286	51	37	-4.5 (-10.2 – 1.3)	31,287	32	30	-0.6 (-5.8 – 4.2)
<b>Adverse events</b>								
Acute kidney injury	31,212	7	7	0.0 (-2.2 – 2.2)	31,193	13	8	-1.6 (-4.5 – 1.3)
Anemia	29,636	165	118	-15.9 (-27.0 – -4.7)	29,230	151	155	1.4 (-10.3 – 13.0)
Appendicitis	31,261	5	3	-0.6 (-2.6 – 1.0)	31,257	8	4	-1.3 (-3.5 – 1.0)
Arrhythmia	30,189	91	69	-7.3 (-15.6 – 1.0)	30,037	73	76	-1.0 (-6.7 – 9.0)
Arthritis or arthropathy	31,060	20	9	-3.5 (-7.1 – 0.0)	31,038	19	24	1.6 (-2.6 – 5.8)
Bell's palsy	31,229	6	3	-1.0 (-2.9 – 1.0)	31,220	0	4	1.3 (0.3 – 2.6)
Cerebral venous sinus thrombosis	31,287	0	1	0.3 (0.0 – 1.0)	31,286	0	0	..
Deep vein thrombosis	31,158	8	7	-0.3 (-2.9 – 2.2)	31,151	14	16	0.6 (-2.9 – 4.2)
Guillain-Barré syndrome	31,283	0	0	..	31,283	0	1	0.3 (0.0 – 1.0)
Heart failure	31,004	37	19	-5.8 (-10.6 – 1.3)	30,939	20	22	0.6 (-3.6 – 4.8)
Herpes simplex virus infection	31,131	22	15	-2.2 (-6.1 – 1.6)	31,109	22	16	-1.9 (-5.8 – 1.9)
Herpes zoster virus infection	31,046	31	18	-4.2 (-8.7 – 0.0)	30,965	35	17	-5.8 (-10.3 – -1.3)
Intracranial hemorrhage	31,253	3	3	-0.0 (-1.6 – 1.6)	31,243	4	4	0.0 (-1.9 – 1.6)
Ischemic stroke	31,009	31	15	-5.2 (-9.4 – 1.0)	30,955	10	18	2.6 (-0.6 – 5.8)

Event	COVID-19 Vaccine				Influenza Vaccine			
	Cohort <sup>*</sup>	Event before <sup>**</sup>	Event after <sup>**</sup>	Risk difference <sup>†</sup>	Cohort <sup>*</sup>	Event before <sup>**</sup>	Event after <sup>**</sup>	Risk difference <sup>†</sup>
	<i>No. of persons</i>	<i>No. of events</i>	<i>No. of events</i>	<i>No. of events/ 10,000 persons</i>	<i>No. of persons</i>	<i>No. of events</i>	<i>No. of events</i>	<i>No. of events/ 10,000 persons</i>
Lymphadenopathy	31,034	25	39	4.5 (-0.6 – 9.7)	31,004	36	24	-3.9 (-8.7 – 1.0)
Lymphopenia	31,287	0	0	..	31,287	0	0	..
Myocardial infarction	31,169	15	13	-0.6 (-3.8 – 2.6)	31,141	9	14	1.6 (-1.3 – 4.8)
Myocarditis	31,282	1	1	-0.0 (-1.0 – 1.0)	31,278	1	0	-0.3 (1.0 – 0.0)
Neutropenia	31,210	13	11	-0.6 (-3.8 – 2.6)	31,193	14	7	-2.2 (-5.1 – 0.6)
Other thrombosis	31,257	5	3	-0.6 (-2.6 – 1.0)	31,256	3	5	0.6 (-1.0 – 2.6)
Paresthesia	30,752	77	51	-8.5 (-15.6 – -1.3)	30,639	68	67	-0.3 (-7.8 – 7.2)
Pericarditis	31,264	1	4	1.0 (-0.3 – 2.6)	31,257	2	1	-0.3 (-1.3 – 0.6)
Pulmonary embolus	31,227	3	0	-1.0 (-2.2 – 0.0)	31,217	2	5	1.0 (-0.6 – 2.6)
Seizures	31,262	5	5	0.0 (-1.9 – 1.9)	31,244	1	2	0.3 (-0.6 – 1.6)
Syncope	30,989	39	39	0.0 (-5.5 – 5.5)	30,928	49	36	-4.2 (-10.0 – 1.6)
Thrombocytopenia	31,205	12	10	-0.6 (-3.5 – 2.2)	31,195	5	11	1.9 (-0.6 – 4.5)
Uveitis	31,231	5	2	-1.0 (-2.6 – 0.6)	31,224	5	4	-0.3 (-2.2 – 1.6)
Vertigo	29,874	182	145	-12.4 (-24.4 – -0.7)	29,540	158	144	-4.7 (-16.2 – 6.8)

600 \* Individuals without previous diagnosis of the event before vaccination.

601 \*\* 28-day period before vaccination and after vaccination.

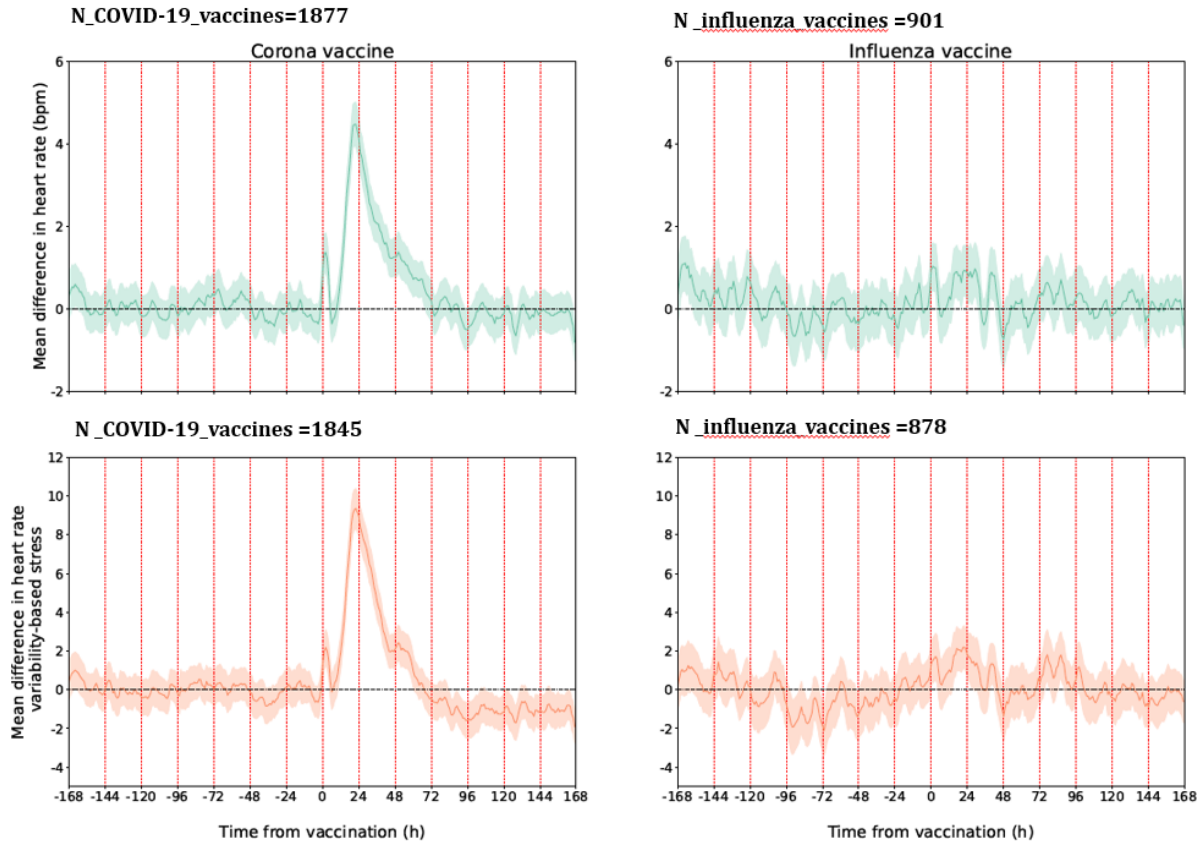
602 † The risk difference and confidence interval were estimated for each individual in a paired fashion with the use of a percentile bootstrap method  
603 with 10,000 repetitions.



604  
605

606 **Figure 1.** Reported symptoms following COVID-19 and influenza vaccination. Error bars represent 95% confidence intervals based on a  
607 binomial distribution.

608  
609

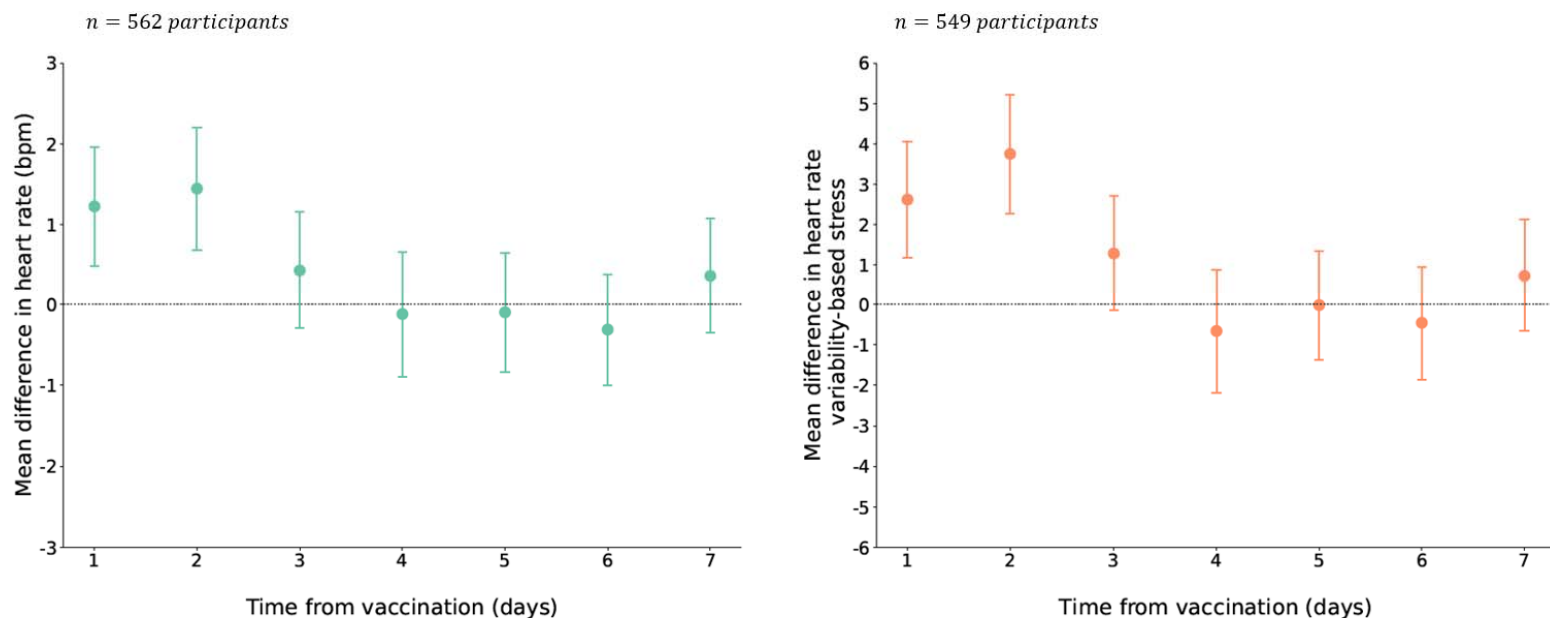


610  
611

612 **Figure 2.** Mean difference in heart rate (in beats per minute) and stress measure (in points)  
613 between the post-vaccination and baseline periods after COVID-19 and influenza vaccinations.  
614 Shaded regions represent 95% confidence intervals.

615  
616

617



618  
619

620 **Figure 3.** Paired analysis: daily mean changes in the smartwatch indicators for heart rate and the stress measure. For each participant, this  
621 was calculated as the mean change in the indicator (either heart rate or the stress measure) associated with COVID-19 vaccination  
622 compared to an individual's baseline minus the mean change in the indicator associated with influenza vaccination. Error bars represent  
623 95% confidence intervals.

624



625  
626 **Supplementary Materials for:**  
627 **Comparing reactions to COVID-19 and influenza vaccinations: data from**  
628 **patient self-reporting, smartwatches and electronic health records**

628 Matan Yechezkel, MS<sup>1</sup>, Gary Qian, MS<sup>2</sup>, Yosi Levi, MS<sup>1</sup>, Nadav Davidovitch, PhD<sup>3</sup>, Erez Shmueli, PhD<sup>1,4\*</sup>, Dan  
629 Yamin, PhD<sup>1,5\*</sup>, Margaret L. Brandeau, PhD<sup>2\*</sup>

630 <sup>1</sup>Department of Industrial Engineering, Tel Aviv University, Tel Aviv, Israel

631 <sup>2</sup>Department of Management Science and Engineering, Stanford University, Stanford, California, United States of  
632 America

633 <sup>3</sup>School of Public Health, Faculty of Health Sciences, Ben Gurion University of the Negev, Beersheva 84105, Israel

634 <sup>4</sup>MIT Media Lab, Cambridge, MA, USA.

635 <sup>5</sup>Center for Combatting Pandemics, Tel Aviv University, Tel Aviv, Israel.

636 \*Contributed equally

637 **Address correspondence to:** Matan Yechezkel, [matany92@gmail.com](mailto:matany92@gmail.com)

638  
639 **Keywords:** COVID-19 vaccine, COVID-19 booster vaccine, BNT162b2, adverse effects,  
640 wearable sensors, influenza vaccine, seasonal influenza, vaccine reactions

641  
642 **Table of Contents**

643	<b>Appendix A – Study protocol.....</b>	<b>2</b>
644	Prospective part .....	2
645	Retrospective part.....	6
646	<b>Appendix B – Data collection platform and data access.....</b>	<b>9</b>
647	1.1 Architecture .....	9
648	1.2 The PerMed Dashboard .....	10
649	1.3 The Type of Data Collected and data access .....	10
650	<b>Appendix C – Prospective study participants’ adherence.....</b>	<b>10</b>
651	<b>Appendix D – Study design scheme.....</b>	<b>11</b>
652	<b>Appendix E – Additional results.....</b>	<b>13</b>
653	<b>References .....</b>	<b>14</b>

654  
655

## 656 **Appendix A – Study protocol**

### 657 **Prospective part**

658

#### 659 *Study Design*

660 In this study we will analyze data that were already collected and will be collected as part of the PerMed study <sup>1</sup>.  
661 Participants in the PerMed study are recruited for a period of two years, during which they are equipped with a  
662 Garmin Vivosmart 4 smartwatches and are asked to wear them as much as they could. In addition, participants  
663 install two applications on their mobile phones: an application that passively collects data from the smartwatch and a  
664 dedicated mobile application which allows participants to fill a daily questionnaire and to report their vaccine date  
665 and specific hour. In this study, we will consider for each participant, the 7-days period prior to any vaccination dose  
666 as the baseline period.  
667

#### 668 *Participants*

669 The inclusion criteria for the PerMed study includes those aged > 18 years. Individuals who are not eligible to give  
670 and sign a consent form of their free are excluded. In this study, we will analyze the data of participants aged 18  
671 years and above, who reported receiving at least one dose of the BNT162b2 mRNA COVID-19 booster vaccine or  
672 seasonal influenza vaccine after joining the PerMed study. To recruit participants and ensure they complete all the  
673 study's requirements, we will hire a professional survey company. Potential participants will be recruited through  
674 advertisements in social media, online banners, and word-of-mouth. The survey company is responsible for  
675 guaranteeing the participants meet the study's requirements, in particular, that the questionnaires are filled daily,  
676 ensuring the smartwatches are charged constantly and worn properly, and assisting participants resolve technical  
677 problems.

678

#### 679 *Study procedures*

680 Before participation in the study, all participants will be advised orally and in writing about the nature of the  
681 experiments and give written, informed consent. At this time, participants will be asked to complete an enrollment  
682 questionnaire that includes demographic information and health status. In addition, participants will be asked to  
683 install two applications on their mobile phones: an application that passively collects data from the smartwatch and  
684 the PerMed application, which allows participants to fill in the daily questionnaires. Participants will be given  
685 instructions regarding the self-reported symptoms questionnaires and how to operate the smartwatch, which they  
686 will wear as much as they can.

687

#### 688 *Enrollment questionnaire*

689 All participants will fill a one-time enrollment questionnaire that includes demographic questions and questions  
690 about the participant's health condition in general. Specifically, the questionnaire will include the following: age,  
691 gender, height, weight and underlying medical conditions (Listed in Table 1, main text). Other questions such as  
692 name, address, phone and email will be recorded and used by the survey company to contact the participants. The  
693 answers will be filled-in directly by the survey company to the study's secured dashboard.

694

#### 695 *Monitoring device*

696 Participants will be equipped with Garmin Vivosmart 4 smart fitness trackers. Among other features, the smartwatch  
697 provides all-day heart rate and heart rate variability and during-night blood oxygen saturation level tracking  
698 capabilities <sup>2</sup>.

699

700 The optical wrist heart rate (HR) monitor of the smartwatch is designed to continuously monitor a user's heart rate.  
701 The frequency at which heart rate is measured varies and may depend on the level of activity of the user: when the  
702 user starts an activity, the optical HR monitor's measurement frequency increases.  
703

704 Since heart rate variability (HRV) is not easily accessible through Garmin’s application programming interface  
705 (API), we use Garmin’s stress level instead, which is calculated based on HRV. Specifically, the device uses heart  
706 rate data to determine the interval between each heartbeat. The variable length of time between each heartbeat is  
707 regulated by the body’s autonomic nervous system. Less variability between beats correlates with higher stress  
708 levels, whereas an increase in variability indicates less stress<sup>3</sup>. A similar relationship between HRV and stress was  
709 also seen in<sup>4,5</sup>.

710  
711 The Pulse Ox monitor of the smartwatch uses a combination of red and infrared lights with sensors on the back of  
712 the device to estimate the percentage of oxygenated blood (peripheral oxygen saturation, SpO2%). The Pulse Ox  
713 monitor is activated each day at a fixed time for a period of four hours (the default is 2AM-6AM).

714  
715 Examining the data collected in our study, we identified an HR sample roughly every 15 seconds, an HRV sample  
716 every 180 seconds, and an SpO2 sample every 60 seconds.

717  
718 While the Garmin smartwatch provides state-of-the-art wrist monitoring, it is not a medical-grade device, and some  
719 readings may be inaccurate under certain circumstances, depending on factors such as the fit of the device and the  
720 type and intensity of the activity undertaken by a participant<sup>6-8</sup>.

721

### 722 *Vaccination questionnaire*

723 The vaccination questionnaire we will use includes the following question:

724

COVID-19 vaccination – date, time and dose number. [note, this is for  
validation as vaccination data are reported in the EMR]

725

726

727

728

729

730

731

732

### 733 *Daily questionnaires*

734 All participants will complete the daily self-reported questionnaire in a dedicated application (the PerMed mobile  
735 application). The daily questionnaire we will use includes the following questions:

How is your mood today? • Awful (-2) • Bad (-1) • OK (0) • Good (1) • Excellent (2)

How would you describe the level of your stress during the last day? • Very Low (-2) •  
Low (-1) • Medium (0) • High (1) • Very high (2)

How would you define your last night sleep quality? • Awful (-2) • Bad (-1) • OK (0) •  
Good (1) • Excellent (2)

Try to remember how many minutes of sports activity you performed on the last day?

Have you experienced one or more of the following symptoms in the last 24 hours?•  
My general feeling is good, and I have no symptoms• Heat measured above 37.5•  
Cough• Sore throat• Runny nose• Headache• Shortness of breath• Muscle aches•  
Weakness / fatigue• Diarrhea• Nausea / vomiting• Chills• Confusion• Loss of  
sense of taste / smell• Another symptom.

736

737

738

### 739 ***Data Storage***

740 Data collected from the mobile phone application and from the smartwatches will be stored on a secure server  
741 within Tel Aviv University facilities. The server runs a CentOS operating system and is located in Software  
742 Engineering Building at Tel Aviv University. This server is protected behind the university's firewall and is not  
743 connected to external networks. In addition, a secure connection through an SSL protocol and a trusted certificate  
744 will be obtained for the transfer of information from the mobile phone application into the secured server.

745

746 Access will be restricted to investigators in the study. The information from the mobile application will be stored in  
747 a structured manner on the secured server without any explicitly identifying information (name, ID number, email).  
748 Each participant will be assigned a coded participant number that will be used to identify the subject in the database.  
749 The code with the identified information will be stored in an encrypted form on a separate secured server that only  
750 the research manager will have access to. Access to all servers is restricted with username and password.

751

752 All (non-digital) questionnaires and signed informed consent documents will be stored in a secured cabinet in Tel  
753 Aviv University, to which only the research manager and the principal investigators will have access. No data  
754 collected as part of the study will be added to individuals' medical charts.

755

### 756 ***Data processing***

757 We will perform several preprocessing steps. Concerning the daily questionnaires, in cases where participants will  
758 fill in the daily questionnaire more than once on a given day, only the last entry for that day will be considered, as it  
759 is reasoned that the last one likely best represented the entire day. Self-reported symptoms that are entered as the  
760 free text will be manually categorized. With regard to the smartwatch physiological indicators, data will first be  
761 aggregated per hour (by taking the mean value). Then, to impute missing values, we will perform a linear  
762 interpolation. Finally, data will be smoothed by calculating the moving average value using a five-hour sliding  
763 window.

764

### 765 ***Data Analysis and inclusion criteria***

766 The questionnaire data will be preprocessed by manually categorizing any self-reported symptom entered as free  
767 text. If participants filled out the questionnaire more than once in one day, the last entry from that day was used in  
768 the analysis as it is likely more representative of the past day. Smartwatch data will be preprocessed as follows.  
769 First, we will compute the mean value of each hour of data. We will then perform a linear interpolation to impute  
770 missing hourly means. Lastly, we will smooth the data by calculating the five-hour moving average.

771

772 For each participant and each of the vaccines, we define the 7-day period prior to vaccination as the baseline period.  
773 For the analyses involving self-reported questionnaires, we will include participants who submitted at least one  
774 questionnaire during the baseline period and at least one questionnaire during the seven days post-vaccination. The  
775 two questionnaires are required to understand the appearance of new reactions following vaccination. For the

776 analyses involving smartwatch indicators, we will include participants who had at least one overlapping period of  
777 data (i.e., same day of the week and same hour during the day) during their baseline and post vaccination periods.  
778 The overlapping periods are required for computing the change in indicator values between the baseline and post-  
779 vaccination periods.

780  
781 To compare the changes in specific smartwatch indicators (heart rate, HRV-based stress, resting heart rate, and step  
782 counts) over the 0-42 days post vaccination, with those of the baseline period, we will perform the following steps.  
783 First, for each participant and each hour during the seven days post-vaccination, we will calculate the difference  
784 between that hour's indicator value and that of the corresponding hour in the baseline period (keeping the same day  
785 of the week and same hour during the day). Then, we will aggregate each hour's differences over all participants to  
786 calculate a mean difference and the associated 95% confidence interval, which is analogous to a one-sided t-test  
787 with a significance level of 0.05. To determine the statistical significance of daily differences between the baseline  
788 and post vaccination period, we will calculate the mean daily difference for each participant and then used a one-  
789 sample t-test for each day. To compare the difference of physiological changes between COVID-19 vaccination and  
790 seasonal influenza vaccination among individuals who received both vaccines. For each participant, we will first  
791 calculate the daily mean changes in heart rate between the post-vaccination period and the baseline period. We will  
792 do this separately for the mRNA COVID-19 booster vaccine and the seasonal influenza vaccine. Then we will  
793 calculate the difference between these two mean values for each participant and each of the 7 days after inoculation.  
794 This is equivalent to a two-sided Welch's t-test, which does not assume equal population variance.

795  
796 To understand the extent of new reactions, post vaccination, we will first note any pre-existing signs and symptoms  
797 reported in the last completed questionnaire during the baseline period. Next, we will calculate the percentage of  
798 participants who reported new (i.e., not pre-existing) systemic reactions in the 7-day period after vaccination from  
799 the following list: fatigue, headache, muscle pain, cold, fever, sore throat, cough, chills, vomiting or nausea,  
800 diarrhoea, dyspnoea, confusion, loss of taste and smell, Shortness of breath. Participants could also report any other  
801 symptoms using free text. For each reaction we use a binomial distribution to determine a 95% confidence interval.  
802

### 803 ***Potential Risks & Risk management***

804 No specific risks arising from the smartwatches are expected, as the device is already commercialized with no  
805 known adverse reactions. The main risk in this study is the leakage of private data which we intend to manage as we  
806 describe in the following section.

807

### 808 ***Privacy/Confidentiality***

809 Results from this study will be handled at an aggregated level. Individual data records will remain confidential and  
810 will not be published or shared with any third party. Signed and dated informed consent forms, as well as data  
811 recording sheets (e.g., case report forms) will be stored in locked cabinets during the study and following its  
812 completion. A file containing the personal details of the participants will be coded to help preserve confidentiality  
813 and will be separated from all other data collected throughout the study. This file will be kept by the principal  
814 investigator. Data will be stored on computers in password-protected files.

815 The data obtained from the smartwatch used in this study will be linked to a coded participant number. The  
816 smartwatch does not include a GPS. The data collected by the PerMed application will arrive directly to PerMed  
817 back-end servers and will be stored securely.

818

819

## 820 **Retrospective part**

### 821 *Description of the data*

822 Data will be extracted from the Maccabi Healthcare Services (MHS) database. MHS is a nationwide health plan  
823 (payer-provider) representing a quarter of the population in Israel. The MHS database contains longitudinal data on  
824 a stable population of 2.2 million people since 1993 (with <1%/year moving out). Data are automatically collected  
825 and includes comprehensive laboratory data from a single central lab, full pharmacy prescription and purchase data,  
826 and extensive demographic data on each patient. MHS uses the International Classification of Diseases, Ninth  
827 Revision, Clinical Modification (ICD-9-CM) coding systems as well as self-developed coding systems to provide  
828 more granular diagnostic information beyond the ICD codes. Medications are coded according to the Israeli coding  
829 system with translations to anatomical therapeutic chemical (ATC) classification system wherever available.  
830 Procedures are coded using Current Procedural Terminology (CPT) codes. We will access to the following data for  
831 each patient:

- 832 ➤ Socio-demographics
  - 833 • Sex (binary)
  - 834 • Age (year of birth)
  - 835 • Socioeconomic status by address and according clinic when address is missing) ( scale 1-20)
  - 836 • Supplementary insurance status ( type of insurance structured 1-5)
  - 837 • Country of birth (coalesced into regions when necessary) and immigration date
  - 838 • Sector (clinic level data - Arab / Jewish/ ultra-orthodox Jewish)
  - 839 • Affiliation by district, sub-district (out of 2750 regions)
- 840 ➤ Comorbidities
  - 841 • Charlson co-morbidity index (scale)
  - 842 • Chronic diseases (binary classification)
    - 843 ○ History of malignancies and active malignancy
    - 844 ○ Cardiovascular diseases (ischaemic heart disease, cerebrovascular disease/ all cardio
    - 845 sub registries ).
    - 846 ○ Diabetes (taken from CRI registry)
    - 847 ○ Hypertension (taken from CRI registry)
    - 848 ○ Asthma
    - 849 ○ Chronic Lung Disease
    - 850 ○ Rheumatologic diseases
    - 851 ○ Chronic Kidney Disease
    - 852 ○ Immunocompromised Status
    - 853 ○ Chronic Liver Disease
    - 854 ○ Additional Chronic Diseases
  - 855 ➤ Acute and Chronic Medications ( group of medications)
  - 856 ➤ Vaccination records
  - 857 ➤ Laboratory test results ( binary classification for existence of infectious diseases)
  - 858 ➤ Prescription drugs ( { type, dosage number }
  - 859 ➤ Hospitalization history ( { admission data, primary service, duration } )
  - 860 ➤ Outpatient history (admission data, primary service, ICD diagnosis code)
  - 861 ➤ BMI ( {date ,value } }
  - 862 ➤ Smoking status {date, yes/no }

863

### 864 *Data collection and storage*

865 We will receive access to the data from the medical records of 250,000 random members of Maccabi and the 5,000  
866 participants from the prospective cohort. MHS is a nationwide health plan (payer-provider) representing a quarter of  
867 the population in Israel. The MHS database contains longitudinal data on a stable population of 2.2 million people  
868 since 1993 (with <1%/year moving out). Data are automatically collected and includes comprehensive laboratory  
869 data from a single central lab, full pharmacy prescription and purchase data, and extensive demographic data on  
870 each patient. MHS uses the International Classification of Diseases, Ninth Revision, Clinical Modification (ICD-9-  
871 CM) coding systems as well as self-developed coding systems to provide more granular diagnostic information

872 beyond the ICD codes. Medications are coded according to the Israeli coding system with translations to anatomical  
 873 therapeutic chemical (ATC) classification system wherever available. Procedures are coded using Current  
 874 Procedural Terminology (CPT) codes.

875 As for the medical data, we will receive access to the EMR data after the following pseudonymisation  
 876 procedures:

- 877 1. Healthcare identification number of the members will be coded.
- 878 2. Only year of birth is provided
- 879 3. Free text is removed. This means any text that was types/recorded/scanned manually by healthcare  
 880 staff, and is not structured in the electronic system. This includes any documented conversations  
 881 between healthcare staff and patient or summary of from meetings.
- 882 4. No audio, photos including scanned text, or video contents are provided.
- 883 5. The address of the members is not detailed, and only the statistical area is provided (Israel is stratified  
 884 into 2733 statistical areas with around 2500-5000 individuals per region).

885  
 886 The data access of the retrospective part will be conducted at the MHS. The data are coded, viewed, stored and  
 887 process only within the Maccabi research room. The researchers will connect to the research room via MD Clone  
 888 platform, which is approved by the Ministry of Health. The user connects through a secure connection using  
 889 Lightweight Directory Access Protocol and two factor authentication system.

### 890 *Potential adverse events*

891 We will examine 28 potential adverse events (Table S1) that were previously investigated in the context of COVID-  
 892 19 vaccination<sup>9,10</sup>.

893 **Table S1.** ICD-9 codes of the examined potential adverse events in the retrospective cohort

Event	ICD-9 Code
Acute kidney injury	584.[5-9] <sup>*</sup>
Anemia	28[0,1,3,4,5] <sup>*</sup>
Appendicitis	54[0-2] <sup>*</sup> , 47 <sup>*</sup>
Arrhythmia	427 <sup>*</sup> , 426 <sup>*</sup>
Arthritis or arthropathy	713 <sup>*</sup> , 714.9 <sup>*</sup> , 716.[4-9] <sup>*</sup> , 718.9, 719.[0,1,6,8,9] <sup>*</sup>
Bell's palsy	351.0 <sup>*</sup>
Cerebral venous sinus thrombosis	325
Deep vein thrombosis	451, 451.[1-9] <sup>*</sup> , 453.[1,4] <sup>*</sup> , 453.8[0,2,3,4,5,6,7,8,9], 671.[3,4] <sup>*</sup>
Guillain-Barré syndrome	357.0
Heart failure	428 <sup>*</sup>
Herpes simplex virus infection	054 <sup>*</sup>
Herpes zoster virus infection	053 <sup>*</sup>
Intracranial hemorrhage	43[0,1,2] <sup>*</sup>
Ischemic stroke	433, 433.[0,1,2,3,8,9], 433.[0,1,2,3,8,9]1, 434 <sup>*</sup> , 362.3[1-3], 436 <sup>*</sup>
Lymphadenopathy	785.6 <sup>*</sup> , 683 <sup>*</sup> , 289.[2,3] <sup>*</sup>
Lymphopenia	288.5 <sup>*</sup>
Myocardial infarction	410 <sup>*</sup>
Myocarditis	422 <sup>*</sup> , 429.0 <sup>*</sup> , 398.0 <sup>*</sup> , 391.2 <sup>*</sup>
Neutropenia	288.0, 288.0[0,3,4,9]
Other thrombosis	444 <sup>*</sup> , 557.[0,9] <sup>*</sup> , 557, 452 <sup>*</sup> , 453, 453.[0,1,2,3,4,9] <sup>*</sup> , 453.[7,8], 453.[7,8][2-9], 437.6 <sup>*</sup>
Paresthesia	782.0 <sup>*</sup>

Pericarditis	420*
Pulmonary embolus	415.1*, 673.[2,8]*
Seizures	345.[2,3]*, 780.3, 780.39
Syncope	780.2*, 992.1*
Thrombocytopenia	287.2*, 287.3, 287.3[0,1,3,9], 287.5
Uveitis	360.12, 362.18, 363.0*, 363.2[0,1,2], 363.1*, 364.[0,1,2,3]*, 053.22, 054.44, 091.5*, 098.41, 115.92
Vertigo	780.4*, 78.81, 386.1[0,1,9], 386.2, 438.85

894 \* Any of the possible ICD-9 combinations with a match  
895



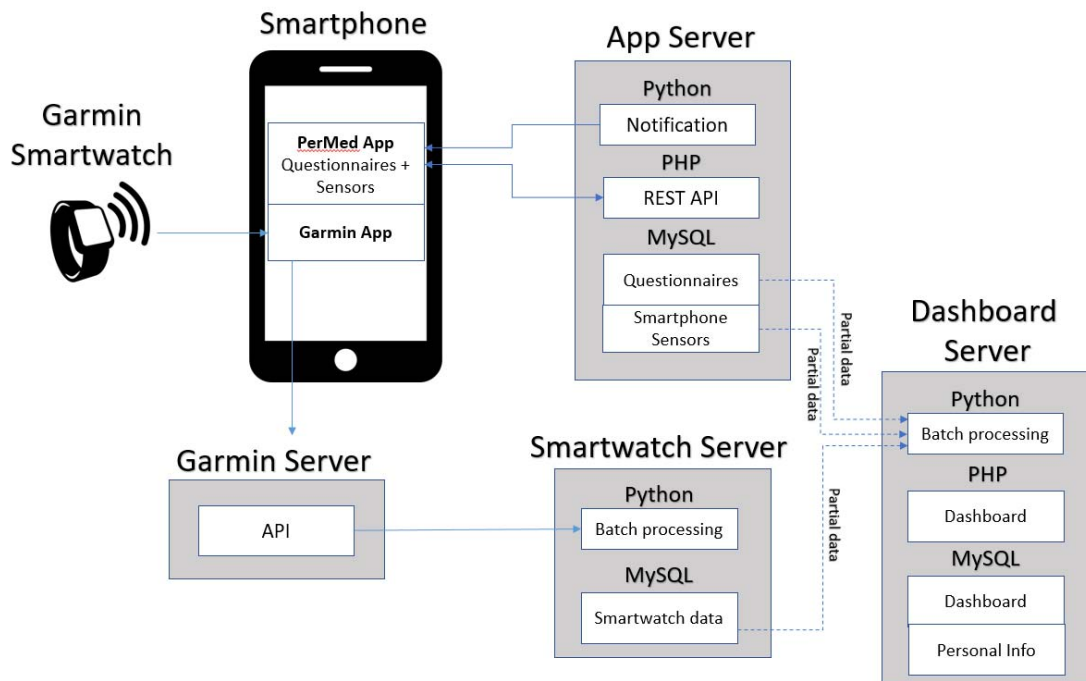
896 **Appendix B – Data collection platform and data access**

897

898 Architecture

899 The data collection platform contains several components that interact with each other (see Figure 2):

- 900 • **The PerMed application** – This application is installed on each participant’s phone to collect sensors  
901 data and the self-reported daily questionnaires. It also handles the smartwatch pairing. The current  
902 version of the application supports both Android and iOS devices.
- 903 • **The smartwatch** - send the data to the Garmin Connect app on the smartphone, which then sends these  
904 data to Garmin’s server.
- 905 • **The smartwatch application** – This application (currently Garmin) receives information from the  
906 smartwatch via Bluetooth and transmits it to the company's server. In addition, it provides a convenient  
907 interface for displaying the participant's smartwatch information.
- 908 • **The app server** – The webserver handles the database connectivity using REST API pages. It enables  
909 the server to authenticate users as they launch the application and write records to the database. A  
910 MySQL server stores the sensors' raw data and the answers to the daily questionnaires. At last, there is a  
911 batch processes running on the server that sends app notifications (daily reminder to fill the  
912 questionnaire).
- 913 • **The dashboard server** - hosts the dashboard pages, which assist in monitoring the quality of the  
914 information and controlling the experiment. The dashboard has access to participant information and  
915 signals indicating whether questionnaires were completed and the smart watch was worn without seeing  
916 its content directly. A batch process is responsible for aggregating raw data for dashboard statistics.
- 917 • **The smartwatch server** - A MySQL server stores the smartwatch data. A batch process is responsible  
918 for collecting the data from the Garmin server.



**Figure S1.** The high-level architecture of the PerMed’s data collection platform.

919

920

## 921 The PerMed Dashboard

922 Participants will be recruited by a qualified external recruitment team headed by Tel Aviv University  
923 personal. The team receive limited information essential control the experiment. Thus, we developed a  
924 dedicated dashboard for monitoring the quality of the information and control the experiment. This  
925 dashboard aims to identify data collection issues such as participants who did not fill the daily  
926 questionnaires or participants who did not charge the battery of their smartwatches. The dashboard also  
927 helps us identify problems that were not related to participants' cooperation, such as bugs in the mobileapp.  
928 This identification allow us to respond faster and provide timely solutions.

## 929 The Type of Data Collected and data access

930 Data collected by the platform arrive from four primary sources:

- 931  **Enrolment questionnaire** - data were collected from a one-time enrollment  
932 questionnaire that includes basic personal characteristics such as socio-demographic  
933 information (e.g., age, gender,height, weight), general habits, health status, and a short  
934 Big Five personality questionnaire.
- 935  **Daily questionnaire** – consists of questions on 1) wellbeing, 2) general health condition,  
936 3) symptoms observed, 4) test results to diagnose infectious diseases, 4) vaccination or  
937 medicationconsumption (if relevant to the study question).
- 938  **Smartphone sensor data** – consist of location, Wi-Fi, Bluetooth, screen, and activity.
- 939  **Smartwatch data** - consist of heart rate data, accelerometer and gyroscope information and  
940 measures based on these data including active minutes, steps, distance, calories, and sleep  
941 level classification, including light, deep, REM, and awake periods.

942 The current research, aims to explore the safety of vaccination, is part of a larger study. Raw accelerometer  
943 data, mobile activity and GPS locations are generally considered sensitive information. In accordance with the  
944 data minimization principle, we did not extract these type of data for this vaccination safety research.

945

## 946 Appendix C – Prospective study participants' adherence

947 We employed a professional survey company to recruit participants and ensure they adhere to the study  
948 requirements. Participant recruitment was performed via advertisements on social media and word-of-mouth. Each  
949 participant signed an informed consent form after receiving a comprehensive explanation on the study. Then,  
950 participants completed a one-time enrollment questionnaire, were equipped with Garmin Vivosmart 4 smartwatches,  
951 and installed two applications on their mobile phones: (1) the PerMed application<sup>1,11,12</sup>, which collects daily self-  
952 reported questionnaires, and (2) an application that passively records smartwatch data. Participants were asked to  
953 wear their smartwatches as much as possible. The survey company ensured that participants' questionnaires were  
954 filled at least twice a week, that their smartwatches were charged and properly worn, and that any technical  
955 problems with the mobile applications or smartwatch were resolved. Participants were monitored through the mobile  
956 application and smartwatches for a period of at least 49 days, starting seven days before vaccination. Participants  
957 also granted full access to their EMR data.

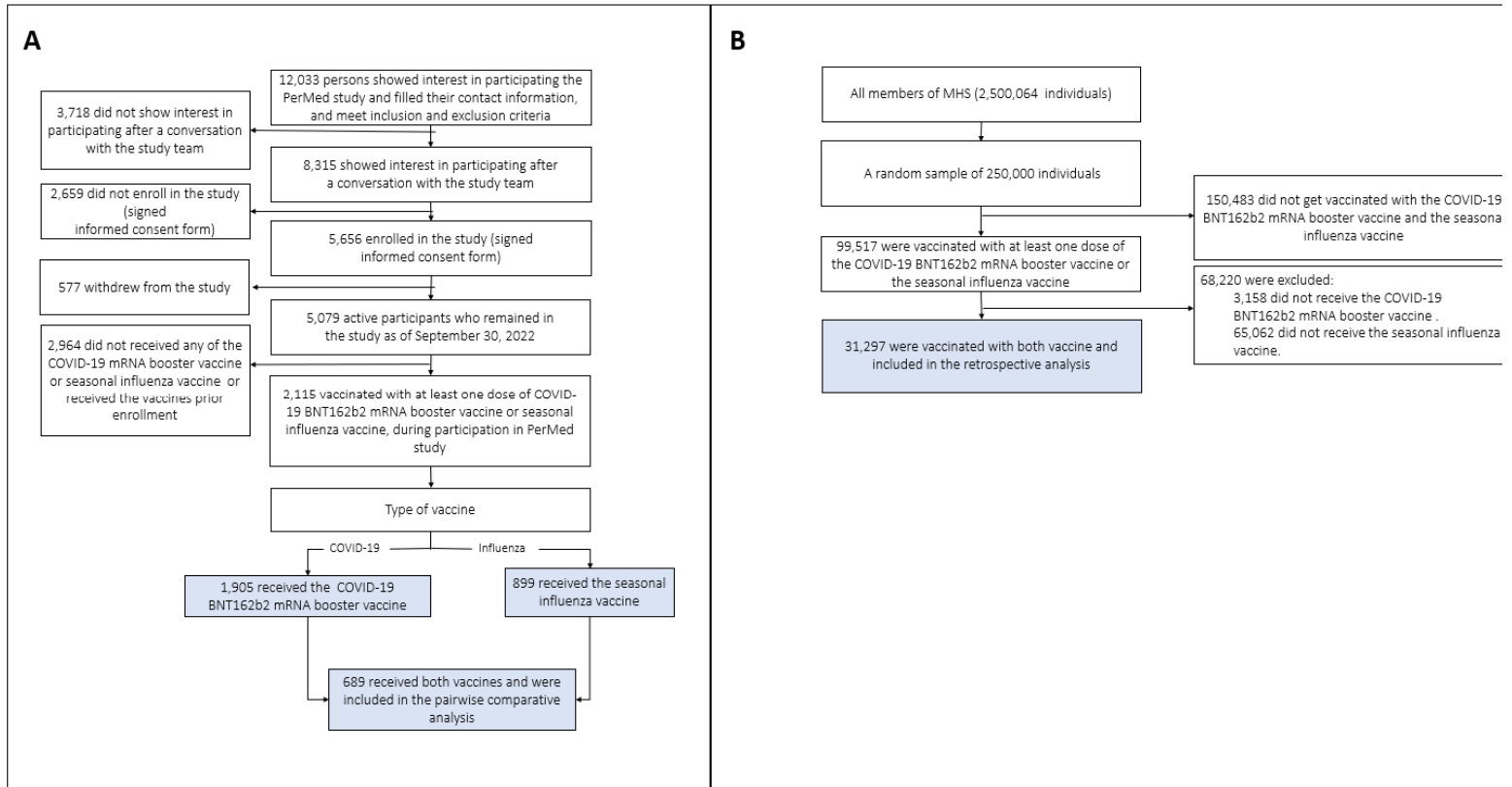
958

959 We implemented several preventive measures to minimize participant attrition and discomfort as a means to  
960 improve the quality, continuity and reliability of the collected data. First, each day, participants who did not fill their  
961 daily questionnaire by 7 pm received a reminder notification through the PerMed application. Second, we developed  
962 a dedicated dashboard that allowed the survey company to identify participants who repeatedly neglected to  
963 complete the daily questionnaire or did not wear their smartwatch for extended periods of time; these participants  
964 were contacted by the survey company (either by text message or phone call) and encouraged to better adhere to the  
965 study protocol. Third, to strengthen participants' engagement, a weekly personalized summary report was generated  
966 for each participant, which was available inside the PerMed application. Similarly, a monthly newsletter with recent  
967 findings from the study and useful tips regarding the smartwatch's capabilities was sent to the participants. At the  
968 end of the study, participants will receive all personal insights that were obtained and can keep the smartwatch as a  
969 gift.

970  
971  
972

973 **Appendix D – Study design scheme**

974  
975



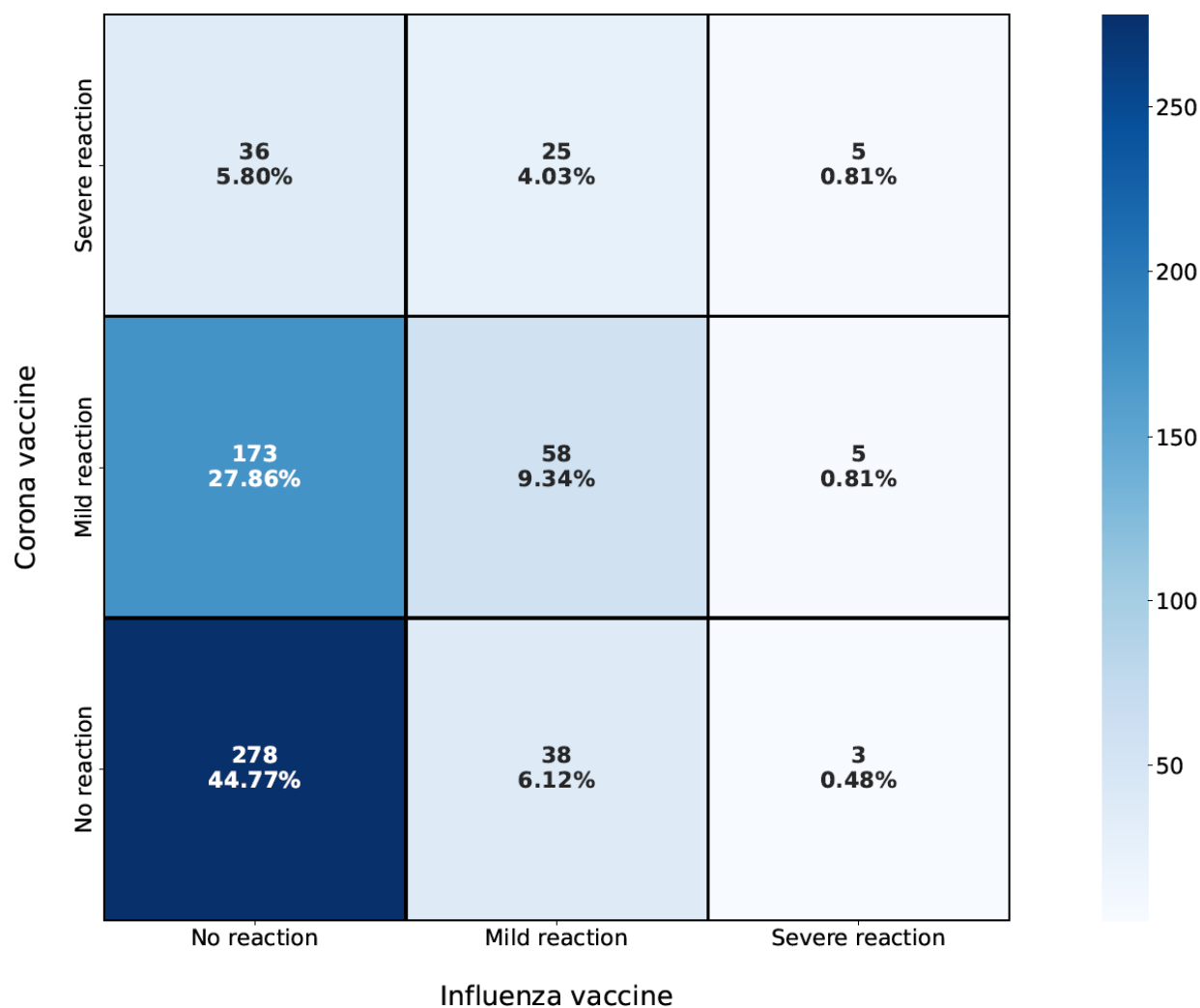
**Figure S2. Trail profile. (A) prospective study, (B) retrospective study**

976 **Table S2.** Number of prospective vaccine cohort observations\*

Vaccine type	No. vaccines	Hourly smartwatch data differences following vaccination				Daily smartwatch data differences following vaccination				Reported symptoms 7 days following vaccination	
		Heart Rate (Smoothed)		Heart Rate Variability (Smoothed)		Heart Rate (Smoothed)		Heart Rate Variability (Smoothed)			
		No. observations	No. paired observations	No. observations	No. paired observations	No. observations	No. paired observations	No. observations	No. paired observations	No. observations	No. paired observations
COVID-19 (3 <sup>rd</sup> and/or 4 <sup>th</sup> dose)	4334	1877	799	1845	779	1888	804	1858	784	2165	881
Influenza	2639	901	692	878	672	905	698	881	677	959	727
Number of participants vaccinated with both vaccines		577		544		562		549		621	

977 \*Observations represent time series data following vaccination. Paired observations are those for which the individual received both a COVID-19 vaccination (3<sup>rd</sup>  
 978 or 4<sup>th</sup> dose) and an influenza vaccination.

979 **Appendix E – Additional results**  
 980



981 **Figure S1.** Comparison of self-reported reaction severity for COVID-19 vaccination and influenza vaccination  
 982 among 621 individuals receiving both vaccines: number and percent of individuals reporting various combinations  
 983 of no reaction, mild reaction, and severe reaction to the COVID-19 vaccine and influenza vaccine  
 984  
 985  
 986

987 **References**

- 988 1 Oved S, Mofaz M, Lan A, *et al.* Differential effects of COVID-19 lockdowns on well-being: interaction  
989 between age, gender and chronotype. 2021 DOI:10.21203/RS.3.RS-137929/V1.
- 990 2 VÍVOSMART ® 4 Owner’s Manual. 2018.
- 991 3 What Is the Stress Level Feature on My Garmin Watch? | Garmin Support. [https://support.garmin.com/en-](https://support.garmin.com/en-US/?faq=WT9BmhjacO4ZpxbCc0EKn9)  
992 [US/?faq=WT9BmhjacO4ZpxbCc0EKn9](https://support.garmin.com/en-US/?faq=WT9BmhjacO4ZpxbCc0EKn9) (accessed Aug 24, 2021).
- 993 4 Kim H-G, Cheon E-J, Bai D-S, Lee YH, Koo B-H. Stress and Heart Rate Variability: A Meta-Analysis and  
994 Review of the Literature. *Psychiatry Investigation* 2018; **15**: 235.
- 995 5 Pereira T, Almeida PR, Cunha JPS, Aguiar A. Heart rate variability metrics for fine-grained stress level  
996 assessment. *Computer Methods and Programs in Biomedicine* 2017; **148**: 71–80.
- 997 6 RK R, R P, DP Z, *et al.* Accuracy of Wrist-Worn Activity Monitors During Common Daily Physical  
998 Activities and Types of Structured Exercise: Evaluation Study. *JMIR mHealth and uHealth* 2018; **6**.  
999 DOI:10.2196/10338.
- 1000 7 Bent B, Goldstein BA, Kibbe WA, Dunn JP. Investigating sources of inaccuracy in wearable optical heart  
1001 rate sensors. *npj Digital Medicine* 2020 3:1 2020; **3**: 1–9.
- 1002 8 Accuracy | Garmin. <https://www.garmin.com/en-US/legal/atdisclaimer/> (accessed Aug 22, 2021).
- 1003 9 Barda N, Dagan N, Ben-Shlomo Y, *et al.* Safety of the BNT162b2 mRNA Covid-19 Vaccine in a  
1004 Nationwide Setting. *New England Journal of Medicine* 2021; **385**: 1078–90.
- 1005 10 Yechezkel M, Mofaz M, Painsky A, *et al.* Safety of the fourth COVID-19 BNT162b2 mRNA (second  
1006 booster) vaccine: a prospective and retrospective cohort study. *Lancet Respir Med* 2022; **0**.  
1007 DOI:10.1016/S2213-2600(22)00407-6.
- 1008 11 Mofaz M, Yechezkel M, Guan G, *et al.* Self-Reported and Physiologic Reactions to Third BNT162b2  
1009 mRNA COVID-19 (Booster) Vaccine Dose. *Emerging Infectious Diseases* 2022; **28**: 1375.
- 1010 12 Gepner Y, Mofaz M, Oved S, *et al.* Utilizing wearable sensors for continuous and highly-sensitive  
1011 monitoring of reactions to the BNT162b2 mRNA COVID-19 vaccine. *Communications Medicine* 2022 2:1  
1012 2022; **2**: 1–8.

1013

1014

1015

1016

1017