

1 **Full Title:**

2 History of incarceration and age-related cognitive impairment: Testing models of genetic and
3 environmental risk in longitudinal panel study of older adults.

4

5 **Short Title:**

6 History of incarceration and cognitive impairment in later life.

7

8 **Authors:**

9 Peter T. Tanksley^{1,2}

10 Matthew W. Logan³

11 J.C. Barnes⁴

12

13 **Affiliations:**

14 ¹Population Research Center, University of Texas at Austin, Austin, TX, USA

15 ²Department of Psychology, University of Texas at Austin, Austin, TX, USA

16 ³School of Criminal Justice and Criminology, Texas State University, San Marcos, TX, USA

17 ⁴School of Criminal Justice, University of Cincinnati, Cincinnati, OH, USA

18 **Abstract (204/300)**

19 History of incarceration is associated with an excess of morbidity and mortality. While the
20 incarceration experience itself comes with substantive health risks (e.g., injury, psychological
21 stress, exposure to infectious disease), most inmates eventually return to the general population
22 where they will be diagnosed with the same age-related conditions that drive mortality in the
23 non-incarcerated population but at exaggerated rates. However, the interplay between history of
24 incarceration as a risk factor and more traditional risk factors for age-related diseases (e.g.,
25 genetic risk factors) has not been studied. Here, we focus on cognitive impairment, a hallmark of
26 neurodegenerative conditions like Alzheimer’s disease, as an age-related state that may be
27 uniquely impacted by the confluence of environmental stressors (e.g., incarceration) and genetic
28 risk factors. Using data from the Health and Retirement Study, we found that incarceration and
29 *APOE-ε4* genotype (i.e., the chief genetic risk factor for Alzheimer’s disease) both constituted
30 substantive risk factors for cognitive impairment in terms of overall risk and earlier onset. The
31 observed effects were mutually independent, however, suggesting that the risk conveyed by
32 incarceration and *APOE-ε4* genotype operate across different risk pathways. Our results have
33 implications for the study of criminal justice contact as a public health risk factor for age-related,
34 neurodegenerative conditions.

35 **Introduction**

36 The effects of incarceration are insidious, pervasive, and correspond with a litany of
37 physical and mental health afflictions among offenders.(1-7) Although the causal mechanisms
38 underlying these relationships are nuanced, there is considerable evidence to suggest that
39 imprisonment exacerbates pre-existing medical conditions and other risk factors due to high rates
40 of exposure to environmental stressors, such as prison violence and victimization, and low rates
41 of identification and treatment during the intake process. Research also indicates that the effects
42 of incarceration are durable and extend into the communities to which individuals return,
43 negatively impacting their quality of life and expectancy.(8)

44 Of particular importance to practitioners and policymakers is the influence of the
45 incarceration experience on acute and chronic causes of early mortality. In the time period
46 around their release, people leaving prison are more likely to die from opioid use disorders
47 (OUDs), overdose, suicide, and homicide.(9-17) One large-scale review on incarceration and
48 health found that most post-release mortality studies focus on short-term effects and indicate that
49 the period immediately following release represented a high-risk time for early mortality among
50 former inmates due to acute causes.(18)

51 The long-term impact of incarceration on mortality (i.e., via chronic health conditions) is
52 less well understood. Most former inmates survive the high-mortality period immediately
53 following release and eventually succumb to the same chronic conditions that drive mortality for
54 the general population such as cancer, cardiovascular disease, and neurodegenerative diseases
55 such as Alzheimer’s Disease and Related Dementias (ADRDs).(19-23) Our focus here is on the
56 latter affliction; specifically, the potential long-term effects of incarceration on the onset and
57 progression of neurodegeneration as indicated by cognitive impairment.

58 Relative to other chronic conditions, neurodegenerative diseases and their potential link
59 with incarceration history have received less attention(24) (but see (25-27)). Still, existing
60 research generally finds that age-related cognitive impairments (i.e., the chief indicator of
61 neurodegeneration) are more prevalent among those who have been incarcerated at some point in
62 their lives compared to the general population.(19, 20, 22) This is unsurprising, as former
63 inmates are subject to a constellation of risk factors including acute stressors (e.g., traumatic
64 brain injury, high infectious disease burden), chronic stressors (e.g., disenfranchisement,
65 unemployment), and lack of social integration (e.g., difficulty maintaining familial connections,
66 homelessness).(18, 28) Together, incarceration and its collateral consequences have been
67 identified as powerful environmental risk factors for the development and progression of
68 neurodegenerative conditions. However, it is not well-understood if/how the risks associated
69 with the incarceration experience interact with the other main source of risk for
70 neurodegeneration: genetic risk factors.

71 Neurodegenerative diseases possess complex genetic etiologies. Alzheimer’s disease
72 (AD), for example, is oligogenic, meaning it is primarily influenced by a small number of
73 genetic variants. For instance, apolipoprotein E (*APOE*) is a gene that codes for proteins that
74 bind and transport low-density lipids and contribute to cholesterol clearance from the
75 bloodstream.(29) Variation in this gene can impact cholesterol metabolism and may lead to
76 increased risk for stroke, cardiovascular disease, and diagnosis of AD.(30) The *APOE* genotype
77 is determined by two variants (rs7412 and rs429358), resulting in three main isoforms of protein
78 *apoE*: E2, E3, and E4 encoded by the ϵ 2, ϵ 3, and ϵ 4 alleles, respectively. The *APOE- ϵ 4* allele has
79 been linked with substantial increases in the risk of developing late-onset Alzheimer’s disease.
80 Possession of one copy of the *APOE- ϵ 4* allele confers a 3-fold increase in risk while two copies

81 confer a 15-fold increase, making *APOE-ε4* status the strongest genetic predictor of Alzheimer’s
82 disease risk.(31) Recent genome-wide association studies have begun to illuminate polygenic
83 variation that contributes to AD(32), but highly impactful genes like *APOE* still loom large in the
84 landscape of genetic risk.

85 Despite their strong genetic basis, neurodegenerative diseases are also affected by
86 environmental risk factors. The 2020 Lancet Commission report on dementia prevention,
87 intervention, and care identified 12 modifiable risk factors that, together, accounted for 40% of
88 dementias world-wide.(33) These included education, hearing loss, traumatic brain injury,
89 hypertension, alcohol intake, obesity, smoking, depression, social isolation, physical inactivity,
90 diabetes, and air pollution. Minoritized groups, particularly African Americans in the US, also
91 bear increased risk for neurodegeneration.(34) Considering these environmental risk factors and
92 overrepresentation of minoritized groups in the correctional system, it is unsurprising that recent
93 research has found that neurodegenerative diseases are more prevalent in the current/former
94 members of the carceral population than among the general population.(35)

95 Here, we draw these two lines of research together to examine how incarceration history
96 and *APOE-ε4* genotype combine to produce risk for neurodegeneration as indicated by cognitive
97 impairment. We posit four possible scenarios (**Figure 1**): (1) genetic risks dominate prediction of
98 cognitive impairment (“genetic risk model”); (2) environmental risks dominate prediction of
99 cognitive impairment (“environmental risk model”), (3) genetic and environmental risks
100 independently predict cognitive impairment (“G+E model”), and (4) genetic and environmental
101 risks interact to produce multiplicative risk for cognitive impairment (“G×E model”). We test for
102 evidence of these four scenarios in terms of both overall risk (i.e., ever developing cognitive
103 impairment) and progression of cognitive impairment (i.e., age of onset).

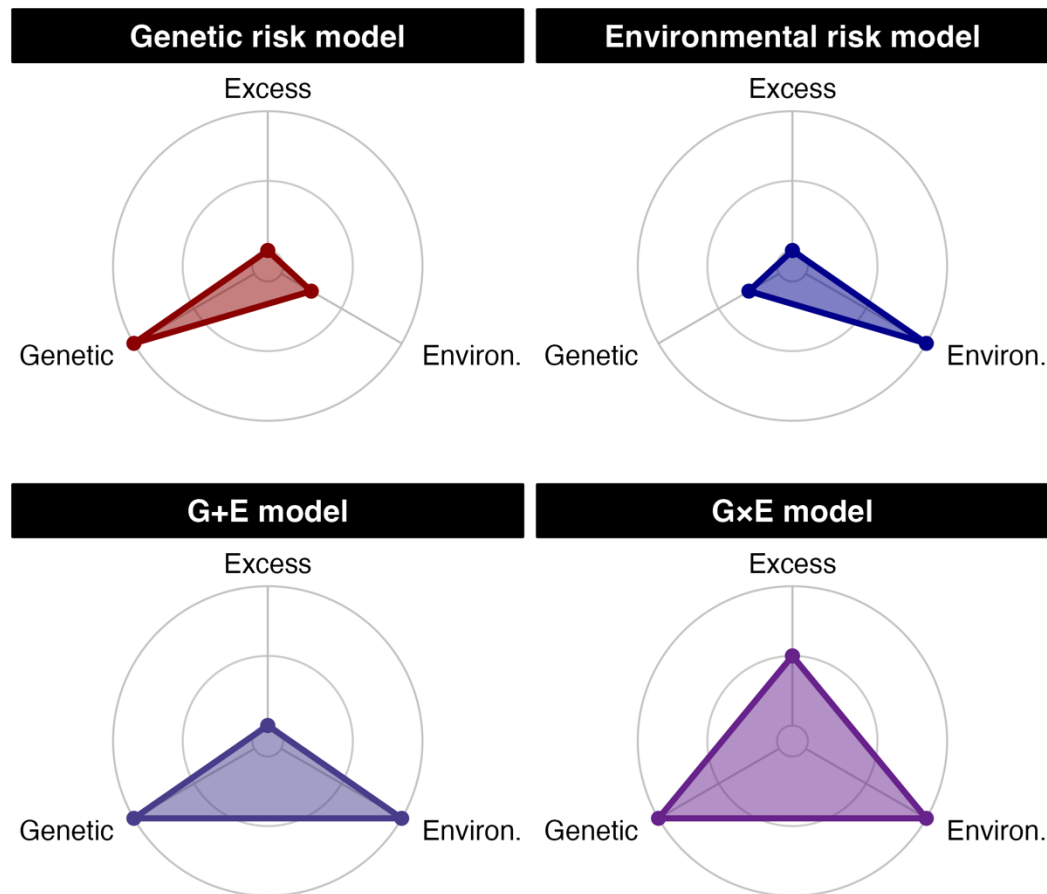


Figure 1. Radar plots showing the theoretical models of prediction sources (genetic, environmental, excess) explored in the current study. Distance from the origin of each plot represents the increasing magnitude of each risk factor’s predictive power. Note: “Excess” refers to the additional prediction achieved by a model containing an interaction term.

104

105

Methods

106 **Data**

107 Data come from the Health and Retirement Study (HRS), a nationally representative
108 cohort study of elderly Americans aged ≥ 50 .(36) The HRS collects information from
109 participants on a biennial basis on social, demographic, economic, behavioral, and health
110 conditions. In addition to the main survey, the HRS randomly selected half the sample to receive
111 enhanced face-to-face interviews starting in 2006 and alternating to the other half of the sample
112 with each wave of data collection. Enhanced interviews included physical performance

113 measurements, blood and saliva samples, and a leave-behind psychosocial questionnaire. The
114 current study relies on deidentified participant data on cognitive impairment from the main
115 study, as well as *APOE-ε4* genotype and information on lifetime incarceration drawn from the
116 enhanced interviews. The analytic sample with complete data included $N=6,949$ cases with
117 $N=55,345$ observations (see **Figure S1** information on missingness).

118 **Measures**

119 *Cognitive impairment.* We assessed cognitive status of HRS participants using the
120 classification scheme developed for the HRS. All participants were administered the Telephone
121 Interview for Cognitive Status (TICS), a telephone-based instrument that probed cognitive
122 functioning along seven domains: memory, mental status, abstract reasoning, fluid reasoning,
123 vocabulary, dementia, and numeracy. In 2009, a methodology was developed for using TICS
124 scores to classify respondents as “normal”, “cognitively impaired non-dementia”, and
125 “demented”. The classification system was validated by a team of dementia experts by
126 comparing TICS scores to the Aging, Demographic, and Memory Study (ADAMS), a subsample
127 of the HRS who received a more extensive psychological battery.(37) For the current analysis,
128 we used repeated measures of the Langa-Weir Cognitive Status classifications for assessment
129 years 1998-2020 from the HRS user contributed data set. To avoid small cell counts, we
130 combined both non-normal cognitive states into one “impaired” category, resulting in a
131 dichotomous *cognitive impairment* variable.

132 *Lifetime Incarceration.* HRS participants were asked about adverse experiences in
133 adulthood including “Have you ever been an inmate in a jail, prison, juvenile detention center, or
134 other correctional facility?”. Respondents received a score of 1 if they answered “Yes” and a
135 score of 0 if they answered “No”. This question was asked in 2012/2014 and answers were coded

136 so that if an individual answered “Yes” to either wave they received a score of 1 on the *Lifetime*
137 *Incarceration* measure. Cases were only categorized as “missing” if they did not provide
138 responses on both waves of data collection. The resulting variable indicated that approximately
139 10% of the analytic samples had some history of incarceration (**Table 1**). These observed rates of
140 incarceration align with other national estimates.(38)

141 *APOE-ε4 genotype*. We assess monogenic risk for neurodegeneration by classifying HRS
142 participants according to the number of *APOE-ε4* alleles they carry as the ε4 allele has been
143 linked with large increases in risk for stroke and heart disease and is the leading genetic risk
144 factor for Alzheimer’s disease. *APOE* genotype was assessed in the HRS using two methods.
145 The primary method relied on direct genotyping using TaqMan allelic discrimination SNP assays
146 and saliva samples collected from consenting HRS participants during years 2006, 2008, 2010,
147 and 2012.(39) Among individuals for whom direct genotyping was not conducted, *APOE*
148 genotype was classified using imputed genotype array data. Following Ware and colleagues(40),
149 we removed samples with imputed *APOE* genotypes with INFO Scores of <99%. We coded
150 *APOE-ε4* genotype according to the number of ε4 alleles contained in each participants’
151 genotype, ranging from 0-2, with more alleles representing greater risk.

152 *Covariates*. Each model was adjusted for age, self-reported race/ethnicity, self-reported
153 sex, history of ever smoking, history of stroke (ever had/doctor suspected stroke=1), high school
154 completion, social origins index (i.e., childhood financial hardship)(41), and HRS birth cohort.

Table 1. Individual and observation-level descriptive statistics of the Health and Retirement Study sample.

Variable	Overall, N = 6,949 ¹	Ever incarcerated?		p-value ²
		No, N = 6,244 ¹	Yes, N = 705 ¹	
Individuals (N = 6,949)				
HRS cohort				<0.001
AHEAD	511 (7.4%)	491 (7.9%)	20 (2.8%)	
CODA	656 (9.4%)	638 (10%)	18 (2.6%)	
WB	1,318 (19%)	1,226 (20%)	92 (13%)	
EBB	2,289 (33%)	2,008 (32%)	281 (40%)	
MBB	2,175 (31%)	1,881 (30%)	294 (42%)	
Self-reported sex				<0.001
Female	4,099 (59%)	3,912 (63%)	187 (27%)	
Male	2,850 (41%)	2,332 (37%)	518 (73%)	
Race/Ethnicity				<0.001
White	4,592 (66%)	4,243 (68%)	349 (50%)	
Black	1,229 (18%)	996 (16%)	233 (33%)	
Hispanic	903 (13%)	799 (13%)	104 (15%)	
Other	225 (3.2%)	206 (3.3%)	19 (2.7%)	
Years in study	14.2 (5.2)	14.4 (5.2)	12.0 (4.8)	<0.001
HS completion				<0.001
High school or more	5,880 (85%)	5,361 (86%)	519 (74%)	
Less than high school	1,069 (15%)	883 (14%)	186 (26%)	
Ever smoker				<0.001
Yes	3,723 (54%)	3,164 (51%)	559 (79%)	
No	3,226 (46%)	3,080 (49%)	146 (21%)	
APOE-ε4 count				0.088
Zero copies	5,202 (75%)	4,697 (75%)	505 (72%)	
One copy	1,603 (23%)	1,417 (23%)	186 (26%)	
Two copies	144 (2.1%)	130 (2.1%)	14 (2.0%)	
Social origins index	0.91 (1.17)	0.87 (1.14)	1.26 (1.33)	<0.001
Observations (N = 55,345)				
Age (mean) ³	64.63 (9.83)	64.94 (9.96)	61.43 (7.62)	<0.001
Cognitive function				<0.001
Impaired	8,275 (15%)	7,199 (14%)	1,076 (22%)	
Normal	47,070 (85%)	43,288 (86%)	3,782 (78%)	
History of stroke				0.228
Yes	3,329 (6.0%)	2,962 (5.9%)	367 (7.6%)	
No	52,016 (94%)	47,525 (94%)	4,491 (92%)	
Study year				<0.001
1998	2,278 (4.1%)	2,167 (4.3%)	111 (2.3%)	
2000	2,287 (4.1%)	2,178 (4.3%)	109 (2.2%)	
2002	2,345 (4.2%)	2,230 (4.4%)	115 (2.4%)	
2004	3,971 (7.2%)	3,678 (7.3%)	293 (6.0%)	
2006	3,982 (7.2%)	3,696 (7.3%)	286 (5.9%)	
2008	4,020 (7.3%)	3,726 (7.4%)	294 (6.1%)	
2010	6,812 (12%)	6,127 (12%)	685 (14%)	
2012	6,886 (12%)	6,187 (12%)	699 (14%)	
2014	6,702 (12%)	6,022 (12%)	680 (14%)	
2016	6,024 (11%)	5,420 (11%)	604 (12%)	
2018	5,183 (9.4%)	4,667 (9.2%)	516 (11%)	
2020	4,855 (8.8%)	4,389 (8.7%)	466 (9.6%)	

¹ n (%); Mean (SD)

² Pearson's Chi-squared test (categorical); Wilcoxon rank sum test (continuous); repeated measures logistic regression with random intercept at the individual level (cognitive function, history of stroke).

³Age was averaged across observations and tested for differences across incarceration groups using the Wilcoxon rank sum test.

156 **Analytic strategy**

157 We estimated the overall risk for cognitive impairment in the HRS as a function of
158 lifetime incarceration and *APOE-ε4* genotype using a generalized mixed linear modeling
159 framework. We estimated incidence rate ratios (IRRs) of cognitive impairment using Poisson
160 regression models with a random intercept at the individual level to account for non-
161 independence due to multiple observations. This approach removes interrelatedness among
162 observations from the same individual, allowing for the interpretation of results as if they were
163 drawn from a cross-sectional sample of unrelated individuals. Next, we estimated the hazard for
164 onset of cognitive impairment using two time-to-event methods. First, using nonparametric
165 Kaplan-Meier survival curves, we compared the unadjusted differences between strata of interest
166 (e.g., incarcerated vs. never-incarcerated; *APOE-ε4* allele counts of zero vs. one. vs. two) using
167 log-rank tests. Next, covariate adjustment was accomplished using Cox proportional hazard
168 models. Time-varying covariates (e.g., stroke) were accommodated by creating panel datasets
169 with one row per individual per observation. Both survival methods used chronological age as
170 the time-scale, an alternative to the time-on-study approach, because it is recommended for
171 analyses in elderly cohorts with age-dependent outcomes.(42, 43) According to
172 recommendations for age-scale survival models(44), we addressed possible calendar effects by
173 stratifying Cox models by HRS cohort (i.e., allowing each birth cohort to have a different
174 baseline risk). Additionally, as the age-based time-scale effectively accounts for age, we did not
175 include age as a covariate in the Cox models. The proportionality assumption was confirmed for
176 all Cox models by examining Schoenfeld residuals.

177 **Results**

178 **Do genetic risk factors predict cognitive impairment in older adults?**

179 We found that *APOE-ε4 genotype* was associated with an increased risk of impaired
 180 cognitive function during the study period (**Table 2**). Consistent with prior research, we
 181 observed that, relative to those with no *APOE-ε4* alleles, risk for cognitive impairment increased
 182 as *APOE-ε4* allele count increased from one allele (IRR=1.12, 95% CI [1.01-1.23], P=0.025) to
 183 two (IRR=1.48, 95% CI [1.12-1.95], P=0.006) (**Model 2.1**). When estimated in the same model
 184 as *Lifetime incarceration* (**Model 2.3**) the results were essentially unchanged, suggesting that the
 185 monogenic risk for cognitive impairment conferred by *APOE-ε4 genotype* is independent of
 186 *Lifetime incarceration*.

Table 2. Mixed effect Poisson regression of cognitive status on *APOE-ε4* genotype and lifetime incarceration

Variable ¹	Model 2.1		Model 2.2		Model 2.3		Model 2.4	
	IRR ^{2,3}	95% CI ³	IRR ^{2,3}	95% CI ³	IRR ^{2,3}	95% CI ³	IRR ^{2,3}	95% CI ³
<i>APOE-ε4</i> allele count								
Zero copies	—		—		—		—	
One copy	1.12*	[1.01, 1.23]			1.11*	[1.01, 1.23]	1.09	[0.98, 1.21]
Two copies	1.48**	[1.12, 1.95]			1.49**	[1.13, 1.96]	1.49**	[1.11, 1.99]
Lifetime incarceration			1.49***	[1.30, 1.70]	1.49***	[1.30, 1.70]	1.42***	[1.21, 1.66]
Lifetime Incarceration								
× One copy							1.18	[0.89, 1.56]
× Two copies							0.99	[0.42, 2.34]

¹ All models also adjusted for age, sex, race/ethnicity, high school completion, smoking history, stroke history, social origins index, and HRS cohort.

² *p<0.05; **p<0.01; ***p<0.001

³ IRR = Incidence Rate Ratio, CI = Confidence Interval

187

188 **Is lifetime incarceration a risk factor for cognitive impairment in older adults?**

189 We found that *Lifetime incarceration* conferred a substantive increase in the risk of
 190 cognitive impairment (**Table 2**). HRS participants with a history of incarceration were 1.5 times
 191 as likely to be cognitively impaired than their non-incarcerated peers (IRR=1.49, 95% CI=[1.30,

192 1.70], $P < 0.001$) (**Model 2.2**)—a level of risk equal to that for individuals with two *APOE-ε4*
193 alleles. As before, we found that association between *Lifetime Incarceration* and *Cognitive*
194 *Impairment* were virtually unchanged when *APOE-ε4 genotype* was included in the model
195 (**Model 2.3**) suggesting independent influences on impairment in the sample.

196 These findings support the interpretation that *APOE-ε4 genotype* and *Lifetime*
197 *incarceration* operate as independent risk factors for *Cognitive impairment* in later adulthood.
198 The possibility remains, however, that these genetic and environmental sources of risk, when
199 brought together, will go beyond their additive effects to inflict a multiplicative increase in risk
200 for impairment. We test this possibility in the next section.

201 **Does the incarceration experience amplify genetic risk factors for cognitive impairment in** 202 **older adults?**

203 We did not find evidence that *Lifetime incarceration* interacts with *APOE-ε4 genotype* to
204 produce excess risk for cognitive impairment. We entered multiplicative interaction terms for
205 *Lifetime incarceration* and *APOE-ε4 genotype* into our analysis (**Model 2.4**) and found that
206 neither term predicted excess risk of cognitive impairment that was distinguishable from the
207 additive effects. Re-estimating **Model 2.4** as a linear model under a linear probability framework
208 produced the same null results, suggesting the lack of interaction was not due to the scale of the
209 interaction (i.e., multiplicative vs. additive).⁽⁴⁵⁾ This finding supports the interpretation that
210 *Lifetime incarceration* and *APOE-ε4 genotype* convey their risk for later life cognitive
211 impairment in a fashion that is independent and additive in nature.

212 **Do genetic risk factors for AD predict earlier cognitive impairment?**

213 In addition to conferring more risk for cognitive impairment at any point (reported
214 above), we found that *APOE-ε4 genotype* was associated with risk for earlier onset as well. We

215 estimated univariate Kaplan-Meier survival curves using age at first indication of cognitive
216 impairment and found statistically significant differences across *APOE-ε4* genotype according to
217 a log-rank test ($\chi^2(2)=45.3$, $P<0.001$) (**Figure 2A**). The ages of median survival probability
218 across *APOE-ε4* genotypes were 79 (zero copies of *APOE-ε4*), 74 (one copy of *APOE-ε4*), and
219 72 (two copies of *APOE-ε4*). We adjusted for covariates with a Cox proportional hazard model
220 using panel datasets to accommodate time-dependent covariates (e.g., stroke history). We
221 observed that possession of one (HR=1.19, 95% CI [1.08-1.31], $P<0.001$) or two copies
222 (HR=1.56, 95% CI [1.20-2.02], $P<0.001$) of *APOE-ε4* resulted in significantly greater hazard for
223 developing cognitive impairment in later life (**Table S1, Model S1.1**).

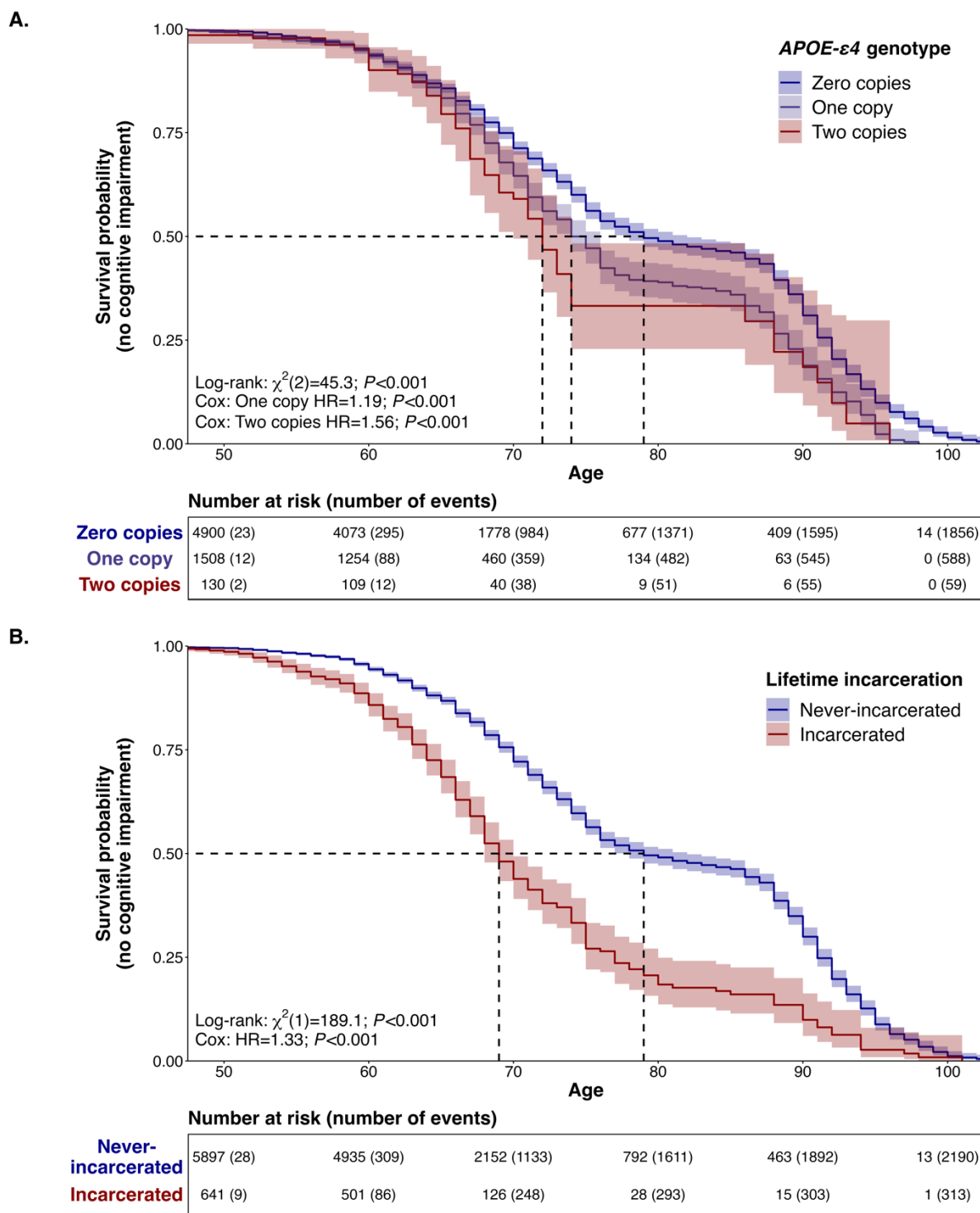


Figure 2. Non-parametric Kaplan-Meier survival curves and risk tables for onset of cognitive impairment, stratified by *APOE-ε4* genotype (**Panel A**) and lifetime incarceration (**Panel B**), respectively. Time-scale corresponds to chronological age. Dashed lines indicate age at median survival probability per stratum. Number of events (i.e., first designation of cognitive impairment) are cumulative. Note: individuals were considered censored for any non-event status (e.g., death, non-participation); x-axis used a floor of age 50 for clarity.

224

225 **Does lifetime incarceration predict earlier cognitive impairment?**

226 We found evidence that HRS participants with a history of incarceration were at risk for
227 earlier cognitive impairment compared to those without. Comparing Kaplan-Meier survival
228 curves, we found that individuals with a history of incarceration tended to develop cognitive
229 impairment earlier than their never-incarcerated peers (log-rank $\chi^2(1)=189.1$, $P<0.001$) (**Figure**
230 **2B**). Strikingly, there was a decade difference between the groups in terms of median survival
231 probability (69 vs. 79). That is, the age at which half of HRS participants were estimated to have
232 experienced cognitive impairment came a decade earlier for the group with a history of
233 incarceration compared to those without such history.

234 A Cox proportional hazard model confirmed that lifetime incarceration was associated
235 with earlier cognitive impairment independent of covariates (HR=1.33, 95% CI [1.17-1.51],
236 $P<0.001$) (**Table S1, Model S1.2**). When *APOE-ε4* genotype and lifetime incarceration were
237 entered into the same model, their effect sizes did not change indicating independent risk
238 pathways (**Model S1.3**). Similarly, the addition of multiplicative terms did not indicate the
239 presence of unexplained excess risk for participants who experienced incarceration and had one
240 or more *APOE-ε4* alleles (**Model S1.4**).

241 **Discussion**

242 Cognitive decline is a hallmark of aging and a prerequisite for neurodegenerative diseases
243 like Alzheimer's disease. The progression toward cognitive impairment and eventually dementia
244 can be exacerbated by factors both genetic and environmental. Here, we examined two such risk
245 factors—one well-known (*APOE-ε4* genotype) and one less well-known (incarceration history)—
246 and sought to determine the form of their interplay. We observed that *APOE-ε4* genotype and

247 lifetime incarceration were independently related with an increased risk for cognitive impairment
248 among HRS participants (i.e., a “G+E model” of risk).

249 Surprisingly, when estimating overall risk for cognitive impairment, the effect size for
250 lifetime incarceration was identical to that for carrying two copies of the *APOE-ε4* allele,
251 considered to be the strongest genetic risk factor for Alzheimer’s disease.(46) We found that
252 people with a history of incarceration developed cognitive impairment a full decade earlier than
253 people who do not have a history of incarceration. These findings position lifetime incarceration
254 as an environmental risk factor for cognitive impairment that is comparable to *APOE-ε4*
255 genotype, the leading genetic risk factor for Alzheimer’s disease.

256 The above comparison of risks/hazards between *APOE-ε4* genotype and lifetime
257 incarceration should be interpreted with caution as *APOE-ε4* genotype is a single, precisely
258 measured risk factor and past incarceration is likely a proxy (i.e., not causal) for the many
259 exposures that go along with a criminal lifestyle. Nonetheless, we believe that criminal justice
260 contact, particularly at the level of incarceration, is an important indicator to consider in
261 population health research for three reasons. First, past incarceration identifies a segment of the
262 population that is disproportionately poor, low in academic achievement, and hailing from
263 minoritized groups(47-51) all risk factors for neurodegenerative diseases. Even if treated merely
264 as an indicator of the concentration of risk, past incarceration would be valuable information for
265 research aiming to characterize the health burden in a population. Second, there is evidence that
266 past incarceration is not merely an indicator of the underlying risk of the (highly selected)
267 carceral population, but also causally contributes to the health burden of inmates via direct (i.e.,
268 exposures during their sentence) or indirect means (i.e., incarceration-related exposures
269 experienced after release), though this line of research is still nascent.(28, 52, 53) Third,

270 incarceration may exacerbate underlying risks (e.g., genetic risk factors) in a multiplicative
271 fashion, going beyond the mere additive effects. The current study did not find evidence for the
272 latter possibility (i.e., no statistical interaction between past incarceration and *APOE-ε4* genotype
273 was observed) but we believe that such a scenario is worth examining in the case of other
274 outcomes, especially age-related conditions with different genetic profiles (e.g., polygenic
275 instead of oligogenic).

276 The current study relied on participants in a population health survey. This approach is
277 imperfect as it assumes that the population of interest (i.e., those affected by the incarceration
278 experience) are likely to participate in population health surveys after their return to the general
279 population. To understand the impact of incarceration on cognitive outcomes more fully (and the
280 progression of age-related conditions more generally) we suggest that researchers move their
281 attention to variation occurring during the incarceration experience itself. Our results comport
282 with a litany of studies underscoring the necessity of risk assessment and classification for
283 offenders during the intake process (i.e., right before they enter prison). Traditional assessments,
284 such as the Level of Service Inventory-Revised (LSI-R), typically focus on indicators of
285 criminogenic risk including antisocial cognitions and personality patterns and have been
286 empirically validated over time and space for both males and females.(54-56) More recently,
287 scholars have emphasized the importance of embedding indicators of psychiatric and medical
288 afflictions into these tools as a means of improving service provision.(57, 58) There have also
289 been calls to provide in-depth assessments and evaluations of the aging process within prisons
290 (59) to many issues posed by members of the “graying” prison population and the “accelerated
291 aging” that happens behind bars.

292 According to the United States Census Bureau, the threshold for elderly status among
293 community samples is approximately 65 years old; by contrast, it is, on average, much lower
294 among correctional populations and, according to the National Institute of Corrections, generally
295 includes anyone over the age of 50.(60, 61) Scholarship indicates that incarcerated offenders
296 over the age of 50 maintain health profiles equivalent to persons outside of prison who are 65
297 and older.(62) Given the results of the current study, administrators might consider specialized or
298 alternative placements for individuals with higher levels of genetic risk on the *APOE-ε4*
299 genotype as a means of anticipating some of the financial and logistical encumbrances (e.g.,
300 healthcare spending and facility layout/design) that accompany the management of elderly
301 offenders.(63) In addition to identifying individuals based on genetic risk, prison officials may
302 also consider administering a battery of validated cognitive tests, such as the Montreal Cognitive
303 Assessment, to offenders during the intake process to determine baseline levels of functioning
304 and permit tracking over time to inform future decisions (such as compassionate release). This is
305 particularly important because manifestations of genetic risk do not remain static over time;
306 rather, they can be curbed or exacerbated, depending on the prison experience and are crucial to
307 the establishment of causal ordering/temporality when examining the incarceration-cognitive
308 impairment nexus. Consider, for example, individuals suffering from traumatic brain injury
309 (TBI). TBIs vary in their severity and include “mild,” “moderate,” and “severe” classifications;
310 yet an individual who enters prison with a mild TBI could end up in the severe category if (s)he
311 is exposed to any number of prison stressors, including violence. Of course, such considerations
312 must be balanced against other indicators of risk, including the history of and propensity for
313 violence(64), as well as the ability to maintain and provide safety and security to others.

314 Disentangling the incarceration-neurodegeneration nexus will become of critical
315 importance in the coming decades, as both the number of individuals living with ADRDs in the
316 community and the “graying” of the prison population are projected to increase substantially. For
317 example, recent estimates indicate that approximately 6 million individuals in the U.S. are
318 currently living with ADRDs; by 2060, this figure will have more than doubled and directly
319 impact nearly 14 million people. By the same token, as of 2020, approximately 20% of the U.S.
320 prison population met the age threshold to be considered “elderly” (≥ 50 years old); by 2030, this
321 figure will rise to approximately 33%.(21, 48) The results of the current study and
322 aforementioned projections comport with suggestions made recently by Testa *et al*(24) who
323 emphasized the necessity of studying the nexus between incarceration and ADRDs throughout
324 the life course because of its potential impact on (1) the reentry and reintegration of affected
325 individuals, noting that it may increase social and economic disparities which independently
326 correlate with general wellbeing; (2) the efficacy of treatment from caregivers and community
327 service providers after an individual’s release; and (3) our understanding of the causal ordering
328 associated with incarceration, ADRDs, and life expectancy (i.e., causation vs. selection and
329 reverse causality).(65, 66) In their call for research, they emphasize the importance of analyzing
330 high-quality data sources. In the current study, we heeded Testa and colleagues’ (2023) call by
331 examining data from the Health and Retirement Study (HRS), with an explicit focus on the
332 enduring effects of imprisonment (i.e., beyond the post-incarceration mortality spike).

333 The results and limitations of the current study offer several avenues for future research,
334 including issues identified by Testa *et al*.(24) First, the HRS did not collect information
335 regarding the timing of incarceration, which prevented us from establishing temporal order. The
336 lack of temporal order precludes our ability to examine many relevant aspects of the association

337 between incarceration and cognitive decline. For instance, it is impossible to establish whether a
338 third variable, like drug use, acts as a mediator or a confounder. To this end, the data do not
339 permit use to test for reverse causality, and specifically the extent to which cognitive reserves
340 and impairment affect the probability of incarceration. As Testa *et al.* note, metrics of
341 impulsivity, intelligence, and brain injury independently correlate with incarceration as well as
342 cognitive decline. Future research should therefore consider these and other relevant factors
343 when studying the incarceration-cognitive impairment nexus to parse out causal pathways.
344 Second, the measurement of lifetime incarceration in the HRS combines many different forms of
345 incarceration into a single indicator, likely concealing a large degree of heterogeneity in the
346 carceral experience. The incarceration experience (i.e., the “dose”)(24) varies across many
347 dimensions including but not limited to the period, age of onset, duration, chronicity, security
348 level, and subjective experience. It should therefore be a public health priority to understand
349 which dimensions impart the greatest risk for cognitive decline, thus allowing more targeted
350 policy conversations. Finally, participants of population health studies such as the HRS are not
351 always representative specific sub-populations of interest to researchers (e.g., the formerly
352 incarcerated population). It is possible that the current results were affected by this form of
353 ascertainment bias, especially if those with incarceration experience and *APOE-ε4* risk alleles
354 were disproportionately less likely to participate in the study. We do not believe this specific
355 limitation to have greatly impacted our results, however, given that no difference in rates of
356 *APOE-ε4* genotype between incarcerated/non-incarcerated groups were present in our analytic
357 sample (**Table 1**).

358 **Conclusion**

359 Incarceration is a heterogenous exposure with many downstream consequences for later
360 life, some of which put former inmates at increased risk for cognitive decline. We found that
361 incarceration imparted risk for cognitive impairment in later life that was independent of and
362 comparable to the leading genetic risk factors. As a risk factor, past incarceration is potent but
363 also opaque. More exploration of the mechanistic processes underlying the incarceration-
364 cognitive impairment nexus may contribute to the amelioration of population-wide disparities in
365 age-related conditions.

References

- 366
367
- 368 1. Blitz CL, Wolff N, Shi J. Physical victimization in prison: The role of mental illness.
369 *International journal of law and psychiatry*. 2008;31(5):385-93.
- 370 2. Felson RB, Silver E, Remster B. Mental disorder and offending in prison. *Criminal*
371 *Justice and Behavior*. 2012;39(2):125-43.
- 372 3. Listwan SJ, Daigle LE, Hartman JL, Guastaferrero WP. Poly-victimization risk in prison:
373 The influence of individual and institutional factors. *Journal of interpersonal violence*.
374 2014;29(13):2458-81.
- 375 4. Pare P-P, Logan MW. Risks of minor and serious violent victimization in prison: The
376 impact of inmates' mental disorders, physical disabilities, and physical size. *Society and Mental*
377 *Health*. 2011;1(2):106-23.
- 378 5. Steiner B, Ellison JM, Butler HD, Cain CM. The impact of inmate and prison
379 characteristics on prisoner victimization. *Trauma, Violence, & Abuse*. 2017;18(1):17-36.
- 380 6. Wooldredge J, Steiner B. Violent victimization among state prison inmates. *Violence and*
381 *victims*. 2013;28(3):531-51.
- 382 7. Wooldredge JD. Inmate lifestyles and opportunities for victimization. *Journal of research*
383 *in crime and delinquency*. 1998;35(4):480-502.
- 384 8. Fazel S, Hayes AJ, Bartellas K, Clerici M, Trestman R. Mental health of prisoners:
385 prevalence, adverse outcomes, and interventions. *The Lancet Psychiatry*. 2016;3(9):871-81.
- 386 9. Binswanger IA, Stern MF, Deyo RA, Heagerty PJ, Cheadle A, Elmore JG, et al. Release
387 from prison—a high risk of death for former inmates. *New England Journal of Medicine*.
388 2007;356(2):157-65.
- 389 10. Binswanger IA, Stern MF, Yamashita TE, Mueller SR, Baggett TP, Blatchford PJ.
390 Clinical risk factors for death after release from prison in Washington State: A nested case-
391 control study. *Addiction*. 2016;111(3):499-510.
- 392 11. Martin RA, Alexander-Scott N, Berk J, Carpenter RW, Kang A, Hoadley A, et al. Post-
393 incarceration outcomes of a comprehensive statewide correctional MOUD program: A
394 retrospective cohort study. *The Lancet Regional Health-Americas*. 2023;18:100419.
- 395 12. Merrall EL, Kariminia A, Binswanger IA, Hobbs MS, Farrell M, Marsden J, et al.
396 Meta-analysis of drug-related deaths soon after release from prison. *Addiction*.
397 2010;105(9):1545-54.
- 398 13. Haglund A, Tidemalm D, Jokinen J, Långström N, Lichtenstein P, Fazel S, et al. Suicide
399 after release from prison: a population-based cohort study from Sweden. *The Journal of clinical*
400 *psychiatry*. 2014;75(10):20451.

- 401 14. Kariminia A, Law MG, Butler TG, Corben SP, Levy MH, Kaldor JM, et al. Factors
402 associated with mortality in a cohort of Australian prisoners. *European journal of epidemiology*.
403 2007;22:417-28.
- 404 15. Kariminia A, Law MG, Butler TG, Levy MH, Corben SP, Kaldor JM, et al. Suicide risk
405 among recently released prisoners in New South Wales, Australia. *Medical journal of Australia*.
406 2007;187(7):387-90.
- 407 16. Pratt D, Appleby L, Piper M, Webb R, Shaw J. Suicide in recently released prisoners: a
408 case-control study. *Psychological medicine*. 2010;40(5):827-35.
- 409 17. Spittal MJ, Forsyth S, Pirkis J, Alati R, Kinner SA. Suicide in adults released from prison
410 in Queensland, Australia: a cohort study. *J Epidemiol Community Health*. 2014;68(10):993-8.
- 411 18. Massoglia M, Pridemore WA. Incarceration and health. *Annual review of sociology*.
412 2015;41:291-310.
- 413 19. Ahalt C, Stijacic-Cenzer I, Miller BL, Rosen HJ, Barnes DE, Williams BA. Cognition
414 and incarceration: Cognitive impairment and its associated outcomes in older adults in jail.
415 *Journal of the American Geriatrics Society*. 2018;66(11):2065-71.
- 416 20. Cox RJ, Wallace RB. The role of incarceration as a risk factor for cognitive impairment.
417 *The Journals of Gerontology: Series B*. 2022;77(12):e247-e62.
- 418 21. Kuffel RL, Byers AL, Williams B, Fortinsky R, Li Y, Ruderman MA, et al. Prevalence of
419 dementia and mild cognitive impairment before incarceration. *Journal of the American Geriatrics*
420 *Society*. 2022;70(6):1792-9.
- 421 22. Spaulding AC, Seals RM, McCallum VA, Perez SD, Brzozowski AK, Steenland NK.
422 Prisoner survival inside and outside of the institution: implications for health-care planning.
423 *American journal of epidemiology*. 2011;173(5):479-87.
- 424 23. Garcia-Grossman IR, Cenzer I, Steinman MA, Williams BA. History of Incarceration and
425 Its Association With Geriatric and Chronic Health Outcomes in Older Adulthood. *JAMA*
426 *Network Open*. 2023;6(1):e2249785-e.
- 427 24. Testa A, Jackson DB, Kaufmann CN, Spira AP, Thorpe Jr RJ. Mass incarceration and
428 cognitive impairment in older adults: Setting a research agenda. *Journal of the American*
429 *Geriatrics Society*. 2023.
- 430 25. Brooke J, Jackson D. An exploration of the support provided by prison staff, education,
431 health and social care professionals, and prisoners for prisoners with dementia. *The Journal of*
432 *Forensic Psychiatry & Psychology*. 2019;30(5):807-23.
- 433 26. Cipriani G, Danti S, Carlesi C, Di Fiorino M. Old and dangerous: Prison and dementia.
434 *Journal of forensic and legal medicine*. 2017;51:40-4.

- 435 27. Maschi T, Sutfin SL, O'Connell B. Aging, mental health, and the criminal justice system:
436 A content analysis of the literature. *Journal of Forensic Social Work*. 2012;2(2-3):162-85.
- 437 28. Massoglia M, Remster B. Linkages between incarceration and health. *Public Health*
438 *Reports*. 2019;134(1_suppl):8S-14S.
- 439 29. Mahley RW. Apolipoprotein E: cholesterol transport protein with expanding role in cell
440 biology. *Science*. 1988;240(4852):622-30.
- 441 30. Huang Y, Mahley RW. Apolipoprotein E: structure and function in lipid metabolism,
442 neurobiology, and Alzheimer's diseases. *Neurobiology of disease*. 2014;72:3-12.
- 443 31. Liu C-C, Kanekiyo T, Xu H, Bu G. Apolipoprotein E and Alzheimer disease: risk,
444 mechanisms and therapy. *Nature Reviews Neurology*. 2013;9(2):106-18.
- 445 32. Kunkle BW, Grenier-Boley B, Sims R, Bis JC, Damotte V, Naj AC, et al. Genetic meta-
446 analysis of diagnosed Alzheimer's disease identifies new risk loci and implicates A β , tau,
447 immunity and lipid processing. *Nature genetics*. 2019;51(3):414-30.
- 448 33. Livingston G, Huntley J, Sommerlad A, Ames D, Ballard C, Banerjee S, et al. Dementia
449 prevention, intervention, and care: 2020 report of the Lancet Commission. *The Lancet*.
450 2020;396(10248):413-46.
- 451 34. Mehta KM, Yeo GW. Systematic review of dementia prevalence and incidence in United
452 States race/ethnic populations. *Alzheimer's & Dementia*. 2017;13(1):72-83.
- 453 35. Miller MC, Salgado G, Nasrallah N, Bronson J, Sabatino CP, Mintzer J. Dementia in the
454 incarcerated population: a retrospective study using the South Carolina Alzheimer's disease
455 registry, USA. *International Journal of Prisoner Health*. 2023;19(1):109-24.
- 456 36. Sonnega A, Faul JD, Ofstedal MB, Langa KM, Phillips JW, Weir DR. Cohort profile: the
457 health and retirement study (HRS). *International journal of epidemiology*. 2014;43(2):576-85.
- 458 37. Langa KM, Weir DR, Kabeto M, Sonnega A. Langa-Weir classification of cognitive
459 function (1995-2020) (user contributed dataset). Ann Arbor, MI: Survey Research Center,
460 Institute of Social Research, University of Michigan; 2023.
- 461 38. Bonczar TP. Prevalence of Imprisonment in the US Population, 1974-2001: Good Press;
462 2019.
- 463 39. Faul J, Collins S, Smith J, Zhao W, Kardia S, Weir D. APOE and Serotonin Transporter
464 Alleles—Early release. Ann Arbor, MI: Survey Research Center, Institute for Social Research,
465 University of Michigan; 2021.
- 466 40. Ware EB, Faul JD, Mitchell CM, Bakulski KM. Considering the APOE locus in
467 Alzheimer's disease polygenic scores in the Health and Retirement Study: a longitudinal panel
468 study. *BMC medical genomics*. 2020;13(1):1-13.

- 469 41. Belsky DW, Domingue BW, Wedow R, Arseneault L, Boardman JD, Caspi A, et al.
470 Genetic analysis of social-class mobility in five longitudinal studies. *Proceedings of the National*
471 *Academy of Sciences*. 2018;115(31):E7275-E84.
- 472 42. Vyas MV, Fang J, Kapral MK, Austin PC. Choice of time-scale in time-to-event analysis:
473 evaluating age-dependent associations. *Annals of Epidemiology*. 2021;62:69-76.
- 474 43. Thiébaud AC, Bénichou J. Choice of time-scale in Cox's model analysis of epidemiologic
475 cohort data: a simulation study. *Statistics in medicine*. 2004;23(24):3803-20.
- 476 44. Kom EL, Graubard BI, Midthune D. Time-to-event analysis of longitudinal follow-up of
477 a survey: choice of the time-scale. *American journal of epidemiology*. 1997;145(1):72-80.
- 478 45. VanderWeele TJ, Knol MJ. A tutorial on interaction. *Epidemiologic methods*.
479 2014;3(1):33-72.
- 480 46. Ward A, Crean S, Mercaldi CJ, Collins JM, Boyd D, Cook MN, et al. Prevalence of
481 apolipoprotein E4 genotype and homozygotes (APOE e4/e4) among patients diagnosed with
482 Alzheimer's disease: a systematic review and meta-analysis. *Neuroepidemiology*. 2012;38(1):1-
483 17.
- 484 47. Minton TD, Zeng Z. Jail inmates in 2020—statistical tables. *NCJ*. 2021;303308.
- 485 48. Carson EA. Prisoners in 2020—Statistical tables. *NCJ*. 2021;302776:1-50.
- 486 49. Pettit B, Western B. Mass imprisonment and the life course: Race and class inequality in
487 US incarceration. *American sociological review*. 2004;69(2):151-69.
- 488 50. Western B, Pettit B. Incarceration & social inequality. *Daedalus*. 2010;139(3):8-19.
- 489 51. Western B. Poverty, criminal justice, and social justice. *IRP Focus*. 2019;35(3):3-13.
- 490 52. Bačák V, Andersen LH, Schnittker J. The effect of timing of incarceration on mental
491 health: Evidence from a natural experiment. *Social Forces*. 2019;98(1):303-28.
- 492 53. Nosrati E, Kang-Brown J, Ash M, McKee M, Marmot M, King LP. Incarceration and
493 mortality in the United States. *SSM-Population Health*. 2021;15:100827.
- 494 54. Dahle K-P. Strengths and limitations of actuarial prediction of criminal reoffense in a
495 German prison sample: A comparative study of LSI-R, HCR-20 and PCL-R. *International*
496 *journal of law and psychiatry*. 2006;29(5):431-42.
- 497 55. Manchak SM, Skeem JL, Douglas KS. Utility of the Revised Level of Service Inventory
498 (LSI-R) in predicting recidivism after long-term incarceration. *Law and human behavior*.
499 2008;32:477-88.
- 500 56. Smith P, Cullen FT, Latessa EJ. Can 14,737 women be wrong? A meta-analysis of the
501 LSI-R and recidivism for female offenders. *Criminology & Public Policy*. 2009;8(1):183-208.

- 502 57. Allely C. Prevalence and assessment of traumatic brain injury in prison inmates: A
503 systematic PRISMA review. *Brain injury*. 2016;30(10):1161-80.
- 504 58. Dulisse BC, Logan MW, Hazlewood AR. Evaluating the use of PTSD Assessment Tools
505 Within the US Prison Setting: An Exploratory Analysis. *The Prison Journal*.
506 2023;00328855231173144.
- 507 59. Stoliker BE, Varanese J. Spending the golden years behind bars: Predictors of mental
508 health issues among geriatric prisoners. *Victims & Offenders*. 2017;12(5):718-40.
- 509 60. Duckett N, Fox TA, Harsha TC, Vish J. Issues in Maryland sentencing: The aging
510 Maryland prison population. College Park: Maryland State Commission on Criminal Sentencing
511 Policy Retrieved from National Institute of Corrections website on January. 2001;14:2006.
- 512 61. Falter RG. Elderly inmates: An emerging correctional population. *Correctional Health*
513 *Journal*. 2006;1(3):52-69.
- 514 62. Aday RH. Aging prisoners: Crisis in American corrections. 2003.
- 515 63. Dulisse BC, Fitch CH, Logan M. No silver lining: Evaluating the need for consistent and
516 appropriate functionality assessments among the increasing and incarcerated elderly population.
517 *Criminal Justice Review*. 2020;45(4):484-501.
- 518 64. Logan MW, Long J, DeLisi M, Hazelwood AR. Serious, Violent, and Chronic Prison
519 Misconduct: Are the Predictors the Same for Women and Men? *The Prison Journal*.
520 2023;103(1):23-44.
- 521 65. Barenboim I. Crime and inequality: reverse causality. Harvard University, 2007. Working
522 paper; 2007.
- 523 66. Butsang T, McLuhan A, Keown LA, Fung K, Matheson FI. Sex differences in pre-
524 incarceration mental illness, substance use, injury and sexually transmitted infections and health
525 service utilization: a longitudinal linkage study of people serving federal sentences in Ontario.
526 *Health & Justice*. 2023;11(1):1-11.
- 527 67. Tierney N, Cook D. Expanding tidy data principles to facilitate missing data exploration,
528 visualization and assessment of imputations. *Journal of Statistical Software*. 2023;105:1-31.
529

Supplemental material

Table S1. Cox proportional hazard model of lifetime incarceration and *APOE-ε4* genotype on first cognitive impairment.

Variable ¹	Model S1.1		Model S1.2		Model S1.3		Model S1.4	
	HR ^{2,3}	95% CI ³	HR ^{2,3}	95% CI ³	HR ^{2,3}	95% CI ³	HR ^{2,3}	95% CI ³
<i>APOE-ε4</i>								
allele count								
One copy	1.19***	[1.08, 1.31]			1.19***	[1.08, 1.31]	1.20***	[1.08, 1.33]
Two copies	1.56***	[1.20, 2.02]			1.57***	[1.21, 2.04]	1.58**	[1.20, 2.08]
Lifetime incarceration			1.33***	[1.17, 1.51]	1.33***	[1.17, 1.51]	1.36***	[1.17, 1.57]
Lifetime Incarceration								
× One copy							0.94	[0.72, 1.22]
× Two copies							0.97	[0.41, 2.29]

¹ All models adjusted for sex, race/ethnicity, high school completion, smoking history, stroke history, and social origins index. All models were stratified by HRS cohort.

² *p<0.05; **p<0.01; ***p<0.001

³ HR = Hazard Ratio, CI = Confidence Interval

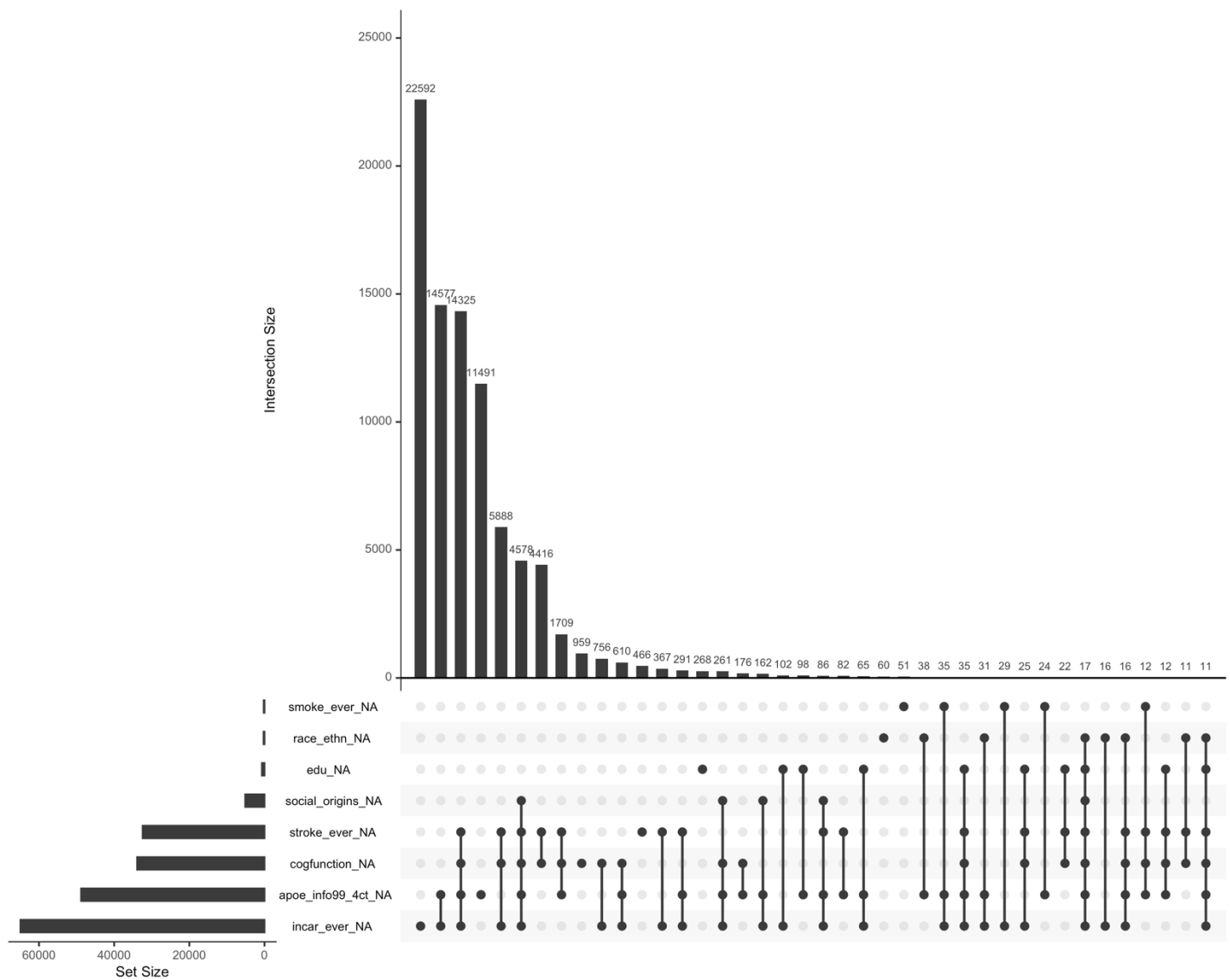


Figure S1. Patterns of missingness across study variables. Missing data counts refer to observations, not cases. Prior to listwise deletion, the sample included $N=23,797$ cases and $N=141,392$ observations. After restriction to complete cases, the analytic sample contained $N=6,949$ cases and $N=55,345$ observations. Note: only variables with missing values are displayed; HRS participants from the HRS and LBB cohorts were not included in the current analysis due to small case counts (5 for HRS) and recruitment after 2012/2014 (LBB) when incarceration variables were administered. Upset plot was created using the R package *maniar*.(67)