

SARS-CoV-2 testing in the Slovak Republic from March 2020 to September 2022 – summary of the pandemic trends

1 **Nikola Janostiakova**^{1*}, **Andrej Gnip**², **Dominik Kodada**¹, **Rami Saade**¹, **Gabriela Blandova**¹,
2 **Emilia Mikova**², **Elena Tibenska**², **Vanda Repiska**¹ and **Gabriel Minarik**³

3 ¹Comenius University in Bratislava Faculty of Medicine, Department of Clinical Biology, Genetics
4 and Clinical Genetics, Bratislava, Slovakia

5 ²Medirex, a.s., Pezinok, Slovakia

6 ³ Medirex Group Academy n.p.o., Nitra, Slovakia

7 *** Correspondence:**

8 Nikola Janostiakova
9 nyariova1@uniba.sk

10 **Keywords: COVID-19, pandemic, Slovakia, statistics, RT-qPCR, Ct value, age groups**

11 **Abstract**

12 The COVID-19 pandemic has been part of Slovakia since March 2020. Intensive laboratory testing
13 ended in October 2022, when the number of tests dropped significantly, but the state of the pandemic
14 continues to this day. For the management of COVID-19, it is important to find an indicator that can
15 predict pandemic changes in the community. The average daily/weekly Ct value with a certain time
16 delay can predict changes in the number of cases of SARS-CoV-2 infection, which can be a useful
17 indicator for the healthcare system. The study analyzed the results of 1,420,572 RT-qPCR tests
18 provided by one accredited laboratory during the ongoing pandemic in Slovakia from March 2020 to
19 September 2022. The total positivity of the analyzed tests was 24.64%. The average Ct values found
20 were the highest in the age group of 3-5 years, equal to the number 30.75; the lowest were in the age
21 group > 65 years, equal to the number 27. The average weekly Ct values ranged from 22.33 (pandemic
22 wave week) to 30.12 (summer week). We have summarized the results of SARS-CoV-2 diagnostic
23 testing in Slovakia with the scope defined by the rate and positivity of tests carried out at Medirex a.s.
24 laboratories.

25 **1 Introduction**

26 The COVID-19 pandemic in Slovakia is part of the global pandemic of the disease COVID-19 caused
27 by the SARS-CoV-2 virus. The first case was confirmed in Slovakia on March 6, 2020 [1]. The first
28 measures against the pandemic were also adopted on March 6, 2020 [2]. A state of emergency was first
29 declared on March 12, 2020 [3]. The state of the pandemic continues worldwide to this day [4].

30 Strict rules and measures adopted in Slovakia at the beginning of the pandemic kept the number of
31 infected people relatively under control. The next wave of the pandemic during the winter of 2020/2021
32 brought a significant worsening of the situation [5]. Due to the appearance of a new alpha mutation
33 (B.1.1.7), this deterioration was even beyond the expectations of experts [6]. In February 2021,
34 Slovakia became the worst in the world in the number of deaths and hospitalized cases per capita [7].
35 The inability to predict the rate of change in the SARS-CoV-2 infection hindered the ability to
36 effectively respond to the crisis not only in Slovakia, but also in the world. The possible way how to

37 monitor disease spread and estimate the evolution of pandemic waves is to perform large scale
38 laboratory as well as home-based testing for the SARS-CoV-2 infection in the population and this was
39 adopted in our region. The most widely used laboratory test method for detecting the presence of the
40 SARS-CoV-2 virus in a sample is RT-qPCR (Quantitative Real-Time Reverse Transcription
41 Polymerase Chain Reaction). At November 22, 2022, Slovakia recorded a total of 1,855,129 positive
42 cases of coronavirus from 7,348,616 RT-qPCR tests performed (1,345,853 tests per 1 million
43 inhabitants) [8].

44 RT-qPCR detects and quantifies the monitored section of DNA in real time reaction. Amplification
45 monitoring is based on the principle of fluorescence using probes (fluorescent substances) that bind
46 specifically or non-specifically to the amplified DNA. An amplification curve is created for each
47 examined sample based on the measured fluorescence signals [9]. For each amplification curve is then
48 determined a threshold value, referred as the Ct (threshold cycle), that is the intersection between an
49 amplification curve and a threshold line and determines the positivity of the test. The Ct value
50 represents the number of PCR cycles required for the fluorescence signal generated by the
51 incorporation of fluorescent dyes into the PCR product to exceed the background fluorescence level
52 [10]. It is a relative measure of the concentration of target in the PCR reaction. Low Ct values indicate
53 a high viral load and a potentially high level of infectivity. High Ct values indicate a very early or late
54 stage of infection, and therefore a potentially low level of infectivity [11].

55 For the surveillance of COVID-19, it is important to find a good indicator that can predict the trends
56 of the pandemic in the community. The results of several studies indicate that the average daily/weekly
57 Ct value with a certain time delay can predict the increase in the number of positive confirmed cases
58 of COVID-19, which can be a useful indicator for the healthcare system [12, 13]. It is extremely
59 important in diseases, which have a high potential to significantly increase the demand for
60 hospitalization and cause an overcrowding of hospital capacities, threatening a standardly functioning
61 healthcare system

62 For a more effective and sustainable management of the pandemic, it is necessary to predict the
63 improvement/deterioration of the epidemiological situation and prevent its deterioration by following
64 a set of epidemiological criteria at the regional, national, and international level, so that measures are
65 tightened and loosened based on objective criteria [14]. The aim of the work was to summarize the
66 results of SARS-CoV-2 diagnostic testing in Slovakia at the regional level with the scope defined by
67 the rate of tests carried out in Medirex a.s. laboratories and with reference to the course of the pandemic
68 evaluated at the national level. The number of this study data is robust, representing more than 1.4
69 million evaluated RT-qPCR tests. We made sure that the selection of the date period included the entire
70 timeline of the massive national testing of positivity/negativity of Covid-19 within the Slovak
71 Republic. We were particularly interested in individual parameters in terms of differences in viral load
72 over time and between characterized age subgroups (estimated using Ct values). Our findings regarding
73 the trends of the pandemic in the Slovak population can be used for a more effective setting of either
74 diagnostics or the logistics of measures in possible future epidemics/pandemics.

75 **2 Article type**

76 Original Research

77 **3 Manuscript Formatting**

78 **3.1 Materials and methods**

79 The study analyzed data provided by the accredited laboratory Medirex. The data represent the results
80 of RT-qPCR tests of patients and general population. Samples were evaluated from March 2020 to
81 September 2022 and tests were performed in the Central Laboratories in Bratislava, Kosice and Nitra.
82 During this period, the laboratories analyzed 1,420,572 tests. The samples were collected from 74
83 (93.7%) districts of Slovakia. The representation of the districts in the study is connected with the
84 location of the sample collection points created during the SARS-CoV-2 pandemic testing and the
85 location of the diagnostic laboratories Medirex, a.s. In the case that the sample collection points of
86 certain districts of Slovakia were contracted another diagnostic laboratory, we did not have samples
87 from this district.

88 Laboratory Medirex, a.s. carried out tests for the general population and for patients based on a request
89 from a doctor as one of the state-contracted diagnostic laboratories in Slovakia. On the website
90 www.korona.gov.sk, citizens had the opportunity to request a SARS-CoV-2 detection test. The
91 Ministry of Health of the Slovak Republic recommended to use the possibility of testing with PCR
92 tests in case of suspicion of the disease COVID-19. If symptoms of infection were entered (e. g.
93 temperature above 38 degrees, dry cough, joint and muscle pain, shivering, coughing or loss of smell
94 or taste) or contact with a positively tested person, this testing was fully covered by public health
95 insurance. Based on the assessment of clinical symptoms, citizens were automatically assigned the
96 nearest possible testing date in the closest possible vicinity of the address they entered in the
97 application. A positive antigen test of citizen was another possibility to be tested similarly with the
98 PCR test - citizens could also verify positivity of antigen test by subsequently performing a PCR test,
99 which in this case was also covered by public health insurance. In addition to free testing in case of
100 symptoms of the SARS-CoV-2 infection, citizens had the opportunity to be tested free of charge with
101 PCR tests during pre-operative examinations or before planned hospitalization [15]. Finally,
102 individuals could undergo the PCR examination also as self-payers, in this case no selection of
103 individuals (assessment of the presence of symptoms, etc.) was necessary to perform the test. The
104 presence of SARS-CoV-2 was determined from nasopharyngeal swabs and saliva samples, since the
105 collection sites in Slovakia provided these two options for collecting genetic material. Automated
106 extraction of nucleic acid (DNA/RNA) on magnetic particles was performed using the Sera-Xtracta
107 Virus/Pathogen Kit (Cytiva) and the Zybio Nucleic Acid Extraction Kit (Zybio) using the
108 KingFisher™ Flex Purification System (Thermo Scientific) and Zybio EXM 3000 Nucleic Acid
109 Isolation System (Zybio) / Zybio EXM 6000 Nucleic Acid Isolation System (Zybio), respectively.
110 Testing was performed by RT-qPCR using the COVID-19 Real Time Multiplex RT-PCR Kit (Lab-
111 systems Diagnostics), SARS-CoV-2 Nucleic Acid Detection Kit (Zybio) and Novel Coronavirus
112 (2019-nCoV) Real Time Multiplex RT-PCR Kit (Liferiver) on qPCR platforms ABI 7500 (Fast) Re-
113 al-Time PCR System, QuantStudio 5 and QuantStudio 6 Real-Time PCR System (Applied Bio-
114 systems). Data obtained for each test included daily sample number, collection date, patient ID, age,
115 sex, location of sample collection, test result and, in the case of a positive result, the Ct value of the
116 viral gene E – diagnostic value up to 40 (for the SARS-CoV-2 Nucleic kit Acid Detection Kit (Zybio))
117 or 41 (for COVID-19 Real Time Multiplex RT-PCR Kit (Labsystems Diagnostics) and Novel
118 Coronavirus (2019-nCoV) Real Time Multiplex RT-PCR Kit (Liferiver)) – that mean 39 or 40 of
119 amplification cycles is needed to reach the threshold at which a molecular diagnostic test can be
120 detected with positive signal. Ct values have been reported and archived for a positive result since
121 2020-12-03 - therefore, results for Ct values include the date range December 2020 - September 2022.

122 Data were categorized into nine groups by age/level of school attended: newborns and toddlers (0-2
123 years); children of preschool age (3-5 years); children from primary school I (6-8 years old); children
124 of primary school II (9-13 years); children of primary school III (14-15 years); youth I/secondary
125 schools (16-19 years); youth II/university (20-26 years); adults (27-65 years) and sen-iors (66 years

126 and older). For the purposes of demographic analysis, the data were also categorized into individual
127 districts/regions of Slovakia. Population data were obtained from census done by Statistical Office of
128 the Slovak Republic in 2021 [16].

129 Various statistical tests were used to compare categories of data, check for correlations and data
130 characteristics. Fisher's exact test was used to compare values of positivity and Welch's t-test was used
131 to compare Ct values between different groups. Hartigans' dip test was used to check for unimodality
132 of data and Spearman's rank correlation coefficient was used to address possible correlations. Together
133 133 statistical tests were performed and Bonferroni correction was used to adjust the threshold of
134 significance for p-value. Thus $3.76E-4$ was used as the threshold instead of 0.05.

135 **3.2 Results**

136 From March 2020 to September 2022, the laboratory performed a total of 1,420,572 tests for diagnostic
137 purposes, which for the given period represents more than 19% of the total number of RT-qPCR tests
138 in Slovakia. To estimate how the representation of RT-qPCR tests in our study changed over time, we
139 determined the percentage representation of Medirex tests in relation to the total number of RT-qPCR
140 tests in Slovakia on the last day of each month - the representation of tests evaluated in Medirex, a.s.
141 ranged from 8.72% (2022-08-31) to 57.34% (2021-01-31). The population source of the studied
142 population divided into the districts of Slovakia is shown in Figure 1. The color scale shows the number
143 of tests performed and positivity in individual districts. The total positivity of the analyzed tests was
144 24.64% (350,067 tests), while the highest rate of positivity (over 30%) was achieved by the age
145 categories: 6-8 years, 9-13 years, 14-15 years, 16-19 years. The age distribution of the tested patients
146 of the study, together with the frequency of positive/negative PCR tests and the corresponding rate of
147 positivity for individual age categories, is shown in Table 1.

148 The most PCR tests were performed in the Bratislava district, their total number was 612,427, which
149 is more than 6 times more compared to the Kosice district (2nd most numerous in tests performed -
150 100,838 RT-qPCR tests) (Fig. 1A). The rate of the number of tests per population reached 130% in the
151 Bratislava district (Fig. 1C). The highest total positivity (more than 40%) was achieved by the
152 following districts: Sabinov (45.9%), Trencin (49.25%), Komarno (47.01%), Kosice-okolie (45.16%)
153 (Fig. 1B). A more objective view of the rate of positivity in individual districts is represented by the
154 recalculation of the number of positive RT-qPCR tests per district population. In this case, only the
155 district of Stropkov (42.615%) achieved positivity above 40%. (Figure 1D).

156 The map in Figure 2A visualizes the geographical division of Slovakia into 8 regions - Bratislava,
157 Trnava, Nitra, Trencin, Zilina, Banska Bystrica, Kosice and Presov. The graph of Figure 2B shows the
158 differences in Ct values of positive PCR tests between individual regions. Differences in positivity
159 between all pairs of regions were found to be significant based on the Fisher exact test (p -value $<$
160 $3.76E-4$). A significant difference in Ct values was demonstrated on the basis of the independent
161 samples t-test between all pairs of regions, except for the pairs: BA-TT (p -value 0.99), BA-ZA (p -
162 value 0.14), BA-KE (p -value 0.44), TT-ZA (p -value 0.14), TT-KE (p -value 0.57), NR-ZA (p -value
163 0.7), NR-BB (p -value 0.04), TN-ZA (p -value 0.8), ZA-BB (p -value 0.56), ZA-KE (p -value 0.15), ZA-
164 PO (p -value 0.46), BB-PO (p -value 0.14). The average Ct values of individual regions were equal to
165 values from 26.57 to 27.72.

166 The number of tests performed per day with the corresponding number of positive tests is shown in
167 Figure 3. The curve of test frequency and positivity in daily intervals is shown in Figure 3A. For
168 comparison with our data, a similar distribution of frequency and positivity of all performed diagnostic
169 tests within the national testing in Slovakia is shown in Figure 3B. Figure 4 shows the proportion of

170 positivity of tests carried out within the study (4A) and, for comparison, the proportion of positivity of
171 all tests carried out in Slovakia within the framework of national testing (4B). In Figure 4B, the data
172 from March 2020 to September 2022 are plotted with vertical yellow lines. The curves of the graphs
173 show that the positivity rate followed the pandemic waves in Slovakia, which is also represented by
174 the number of tests performed over time (Figure 3, 4).

175 Figure 5 shows the age distribution of tested individuals and positive individuals (5A), respectively the
176 age distribution of tested and positive individuals depending on gender – male/female (5B). Based on
177 the Fisher exact test, the difference between the positivity of men (23.72%) and women (25.54%) was
178 significant (p-value 1.36E-139). The most tested individuals were aged 43 (30,895 individuals). Based
179 on the performed Hartigans' dip test, the distribution of Ct values of positively tested individuals is
180 probably not unimodal, while the average median of Ct values is equal to 27.9 (5C). The detected Ct
181 values ranged from 9.5 to 41. Based on the independent samples t-test, significant differences in the
182 average Ct values between men and women were demonstrated (p-value 5,88E-27) (5C). The highest
183 average Ct values were achieved in the age group of 3-5 years, equal to the number 30.75, the lowest
184 average Ct values were achieved in the age group > 65 years and represented the number 27 (5D).

185 The average weekly Ct of our data reached values from 22.33 (week starting 01/28/2021 - pandemic
186 wave) to 30.12 (week starting 06/30/2022 - pandemic on the wane) (6A). However, the correlation
187 between the change in the number of positives with a one-week delay and the average Ct values based
188 on Spearman's rank correlation coefficient was not confirmed (p-value 0.52).

189 Figure 7 shows the distribution of Ct/total positivity values depending on the age of the individuals.
190 The violin chart demonstrates a gradual decrease in the median Ct values along with the increasing age
191 of the categorized study groups. The highest value of the median Ct was found in the age group of 3-5
192 yrs, equal to the number 30.75. The lowest median Ct value was found in the 20-26 yrs and 27-65 yrs
193 groups, equal to the number 26.7 (7A). Overall positivity above 30% was noted in patients aged 7-19
194 yrs (7B). A significant difference in positivity between age categories was recorded on the basis of the
195 Fisher exact test between all pairs, with the exception of pairs: 3-5 yrs (positivity 25.09%) and 20-26
196 yrs (positivity 24.27%) (p-value 0.5); 6-8 yrs (positivity 33.61%) and 16-19 yrs (positivity 33.41%) (p-
197 value 19.88). Significant differences in the average value of Ct within the age categories were
198 demonstrated on the basis of the independent samples t-test in almost all pairs with the exception of: 0-
199 2 yrs and 6-8 yrs (p-value 7.04), 14-15 yrs and 16-19 yrs (p-value 0.2), 20-26 yrs and 27-65 yrs (p-
200 value 33.61), 20-26 y and > 65 yrs (p-value 9.86), 27-65 yrs and > 65 yrs (p-value 6.25).

201 **3.3 Discussion**

202 The COVID-19 pandemic has affected many areas of medicine and healthcare around the world. Its
203 further development is very difficult to predict. The situation is complicated by the fact that the virus
204 is able to constantly evolve and generate new mutations, which in a specific constellation can lead to
205 the emergence of new variants that can have different manifestations (infectivity, mortality). The
206 inability to predict increases or decreases in cases of SARS-CoV-2 infection has significantly affected
207 the ability of public health officials to respond to this crisis and take the necessary measures. Early
208 detection of the SARS-CoV-2 virus using diagnostic methods is therefore still crucial. The optimal
209 method continues to be the RT-qPCR method, which provides a high diagnostic potential thanks to the
210 currently well-developed laboratory infrastructure.

211 In our study, we analyzed whether and how average weekly Ct values from RT-qPCR tests correlate
212 with the occurrence of SARS-CoV-2 infection in a subpopulation of Slovak residents tested in one
213 accredited laboratory, the tested individuals were classified into age groups. The actual local

214 prevalence and the number of tests performed affect the value of the positivity rate. In general, as more
215 tests are deployed, the positivity rate will approach the true prevalence [19]. The analyzed tests of this
216 study represent > 19% of all diagnostic PCR tests in Slovakia (for the given date interval) from > 93%
217 of the districts of the Slovak Republic, so they should be representative of the population, which is also
218 shown by comparing the frequency and positivity curves of the tests in our study with the curves of the
219 data of the national Slovakia's Covid-19 PCR testing. Although the data showed that children in
220 primary and secondary schools (6-19 years old) had the highest positivity rate (Table 1, Figure 7B),
221 this phenomenon is probably related to the lower frequency of tests in the given age subgroup. In
222 addition, children had schools closed during much of the pandemic [20] and were not required to
223 undergo regular PCR testing (e.g. mandatory for some groups of employees in the workplace).
224 Therefore, children with symptoms of the disease apparently requested PCR diagnosis of SARS-CoV-
225 2 as a priority, which could also have contributed to a higher rate of overall positivity in their age
226 subgroup.

227 The number of performed RT-qPCR tests in Slovakia was largely influenced by changes in the
228 availability of a free RT-qPCR test. From May 2022, a referral from a doctor (general practitioner or
229 specialist) is required to perform a free RT-qPCR test. The exception is patients over 60 years of age,
230 who can continue to request a free RT-qPCR examination through the state portal [21] in case of
231 symptoms of the disease. In the aforementioned study, a lower frequency of performed tests is detected
232 in the time interval April/May 2022. From mid-May 2022 until the end date of the analyzed data of the
233 study, which is September 28, 2022, a significantly reduced frequency of tests was subsequently
234 detected (Figure 3A). A possible limitation in the geographical (districts of Slovakia) classification of
235 performed and positively evaluated PCR tests could be the migration of residents (e.g. due to
236 employment) within districts without updating the permanent residence of citizens. In the result of our
237 study, this was confirmed by recalculating the number of tests performed in the Bratislava district to
238 the official number of inhabitants of this district - probably for this reason, the ratio of the number of
239 tests to the number of inhabitants of the Bratislava district reached up to 130%.

240 The results of several studies show that the distributions of Ct values in SARS-CoV-2 screening cases
241 are typically bimodal [22, 23]. There is an assumption that a lower maximum Ct value corresponds to
242 patients with high infectivity and a higher maximum Ct value corresponds to patients with low
243 infectivity [23]. A bimodal distribution is also typical for other viral infections, with the lowest Ct
244 values indicating the proportion of individuals with a high viral load in the acute phase of infection,
245 and higher Ct values being typical for the early phase of infection or convalescence [11, 24, 25]. This
246 assumption could explain why the distribution of average Ct values of our data is not unimodal.

247 There are also currently several studies determining the ability of Ct values to predict future cases of
248 COVID-19 in terms of outcomes [26, 27, 28]. Although in several published studies, summary analyzes
249 of the distribution of Ct values revealed that the average weekly Ct values fluctuated during the
250 pandemic and that a gradual decrease in the average weekly Ct values indicated a future increase in the
251 occurrence of positive samples [29], this trend was not confirmed by the results of the analysis on our
252 data. Most relevant potential reasons for this difference may be the chaotic organization of the
253 screening and diagnostics in Slovakia performed by the laboratories and relatively unspecific and
254 broadly described criteria regarding the public testing. As in our dataset no specific selection of samples
255 was done, e.g. positive for specific symptoms or based on origin related to specific organizations
256 indicating the test (hospitals, ambulances, selected collection points) the data could be not able to be
257 used for such evaluation and potential prognostic use.

258 Next, we focused on the distribution of Ct values in different age groups to determine which groups
259 may contribute the most to the spread of infection. Biomedical research today relies on p-values as a
260 deterministic measure for data-driven decision making, where a single p-value is calculated from
261 samples of data to determine statistically significant differences between groups of observations.
262 Because the estimated p-value tends to decrease with increasing sample size, applying this
263 methodology to data sets with large sample sizes leads to a higher probability of rejecting the null
264 hypothesis [30], which was also reflected in our data (more than 1.4 million RT-qPCR tests). This fact
265 probably contributed to the demonstration of significant differences in the average Ct values between
266 almost all categorized age groups and also between the regions of Slovakia. This assumption is also
267 confirmed by the fact that the differences between the average Ct values of the Zilina region, which
268 has the smallest number of samples (95 RT-qPCR tests), and the remaining regions were not significant
269 in any case. However, this does not mean that the observed significance is not real. On the contrary,
270 low p-values are present with large sample sizes because the robustness of data means that even a small
271 difference is more likely to reflect a real underlying difference between two datasets. We observe many
272 significant differences between various groups of patients and it can be explained by high complexity
273 of the pandemic. Although there were general trends followed by most patient groups, too many
274 variables participated in the outcome. Examples include infection outbreaks being present in different
275 locations at different times or high variability of measures for suppressing the pandemic.

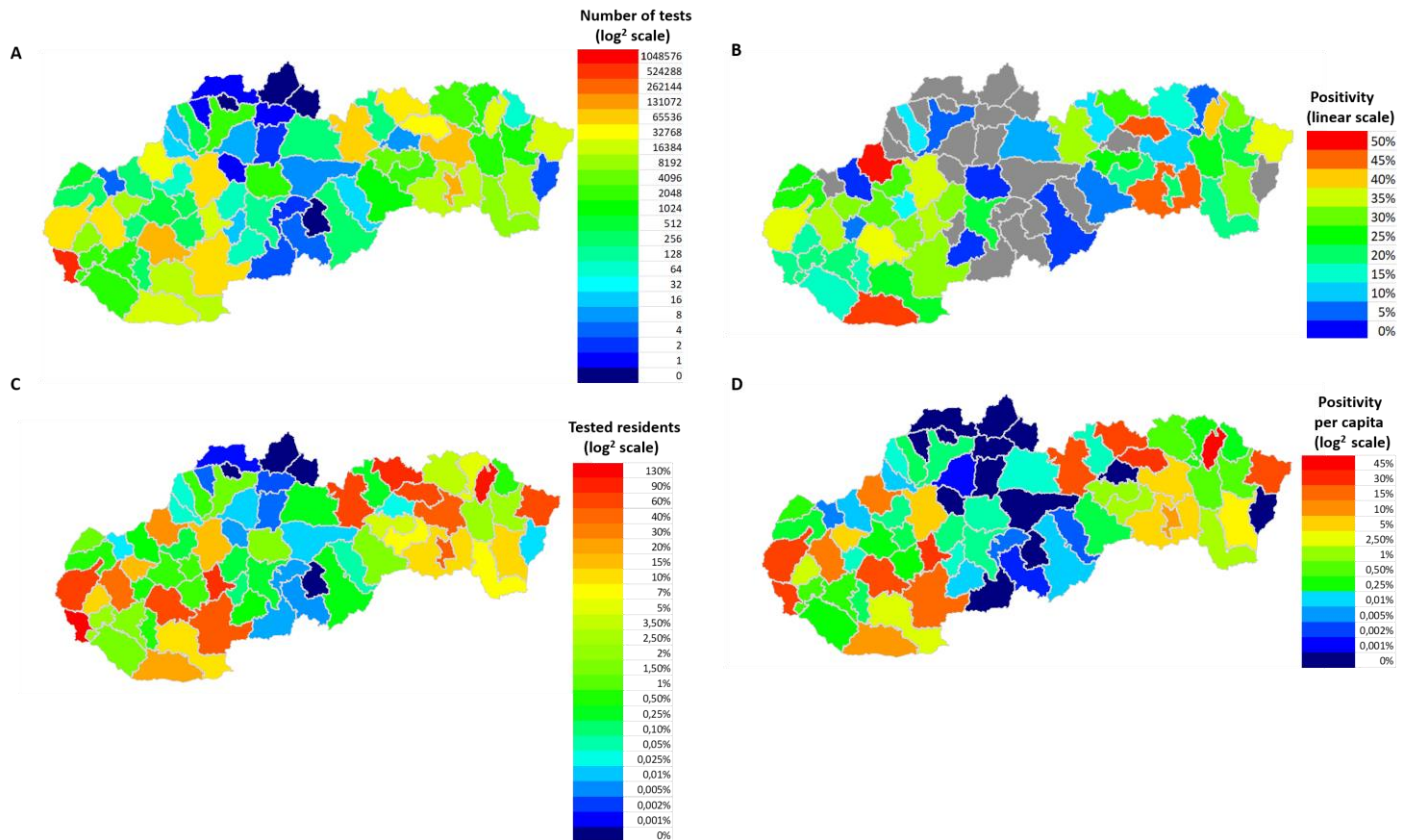
276 However, the graph in Figure 7A demonstrates that the decrease in mean Ct values was consistent with
277 increasing age of individuals in age-related subgroups. This observation is consistent with the statement
278 that children with SARS-CoV-2 infection are often asymptomatic or mildly symptomatic and are rarely
279 the index case in household transmission chains [31]. There are several factors that can potentially
280 affect the detected Ct values, including the type of sample (e.g. nasopharyngeal, anterior nasal mucosa,
281 saliva, sputum) or the efficiency of sampling, (non-intensive sampling can lead to inaccuracies of the
282 results) [32]. The detection of lower Ct values in children may be related to the quality of sampling, as
283 it is necessary to introduce the sampling rod into the nasopharynx [33]. Saliva sampling was put into
284 practice precisely because of the complications of sampling from the nasopharynx in certain groups of
285 individuals - significant pain during nasopharyngeal swabs was described by 58% of young people
286 compared to none during saliva sampling, while 90% of children prefer saliva sampling [34]. The
287 results of the articles demonstrate that detection from saliva samples performs as well or better than
288 nasopharyngeal swabs in hospital, emergency care and mass screening settings for SARS-CoV-2
289 testing by RT-qPCR [35-38]. However, the average Ct value in saliva can be higher compared to the
290 average Ct value from nasopharyngeal swabs [39]. Therefore, a combined nasal and throat swab is
291 usually recommended as a more suitable sample for RT-qPCR diagnosis [32]. As we wanted to include
292 in this study all samples from March 2020 - September 2022 provided by the Medirex laboratory with
293 a positive/negative result detected, the data includes both nasopharyngeal swabs and saliva samples.
294 However, the results representing the detection of SARS-CoV-2 from saliva samples represent less
295 than 5% of all samples and therefore we do not assume that this fact could affect the overall informative
296 value of the average Ct values for the data of this study.

297 **3.4 Conclusions**

298 The age of patients was the most relevant individual parameter when it comes to differences in the
299 viral load as clinically relevant and patient cohort characteristics. The lower age was associated with
300 higher Ct values, and so with lower viral load, and decreased with the age increase. This finding
301 could be used in the public services or lockdown planning during pandemic, e.g. to let the schools
302 open could be less risky when it comes to disease spread in comparison to other public services.
303 However, it is important to noted that the decision to introduce, adapt or cancel public health and

304 social measures should be based primarily on a situational assessment of the intensity of
305 transmission, the vaccination rate of the population and the ability of the health system to respond to
306 a pandemic.

307 3.5 Figures

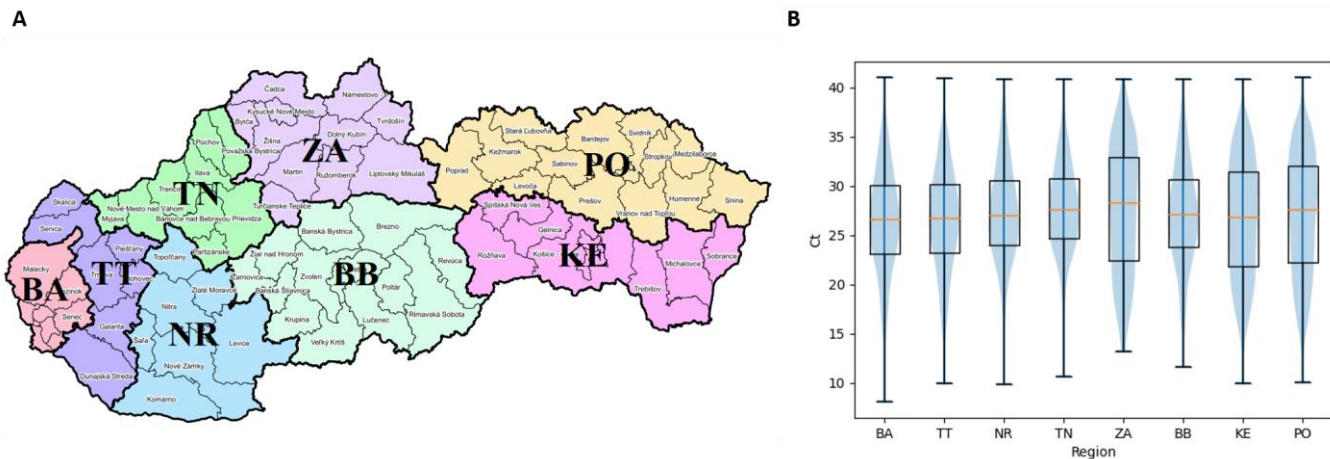


308 **Figure 1:** Geographical classification of the examined and positively tested population according to
309 the districts of Slovakia. (A) On the map, each district has a colored representation (log₂ scale)
310 corresponding to the number of tests performed. For each color of the scale, the number of tests
311 corresponding to each color is indicated. (B) Each district has a colored representation (linear scale)
312 on the map that corresponds to the total positivity of the district. For each color of the scale, the
313 positivity rate (%) corresponding to the individual colors is given. Non-representative districts with
314 insufficient sample representation (less than 50 samples) to calculate total positivity are shown in gray.
315 (C) Each district has a color representation on the map (log₂ scale) that corresponds to the rate of tests
316 performed per district population. For each color of the scale, the rate of frequency (%) corresponding
317 to individual colors is given. (D) Each district has a representation on the map (log₂ scale)
318 corresponding to the rate of positive tests for the population of individual districts of Slovakia. For
319 each color of the scale, the positivity rate (%) corresponding to the individual colors is given

320

321

322



323 **Figure 2:** (A) Geographical visualization of individual regions of the Slovak Republic. Explanations:
324 BA - Bratislava region, TT - Tnava region, NR - Nitra region, TN-Trencin region, ZA - Zilina
325 region, BB – Banska Bystrica region, KE - Kosice region, PO - Presov region [17]. (B) Distribution
326 of Ct values of positive diagnostic tests of individual regions of Slovakia shown as boxplots,
327 supplemented by median Ct values (red lines).

328

329

330

331

332

333

334

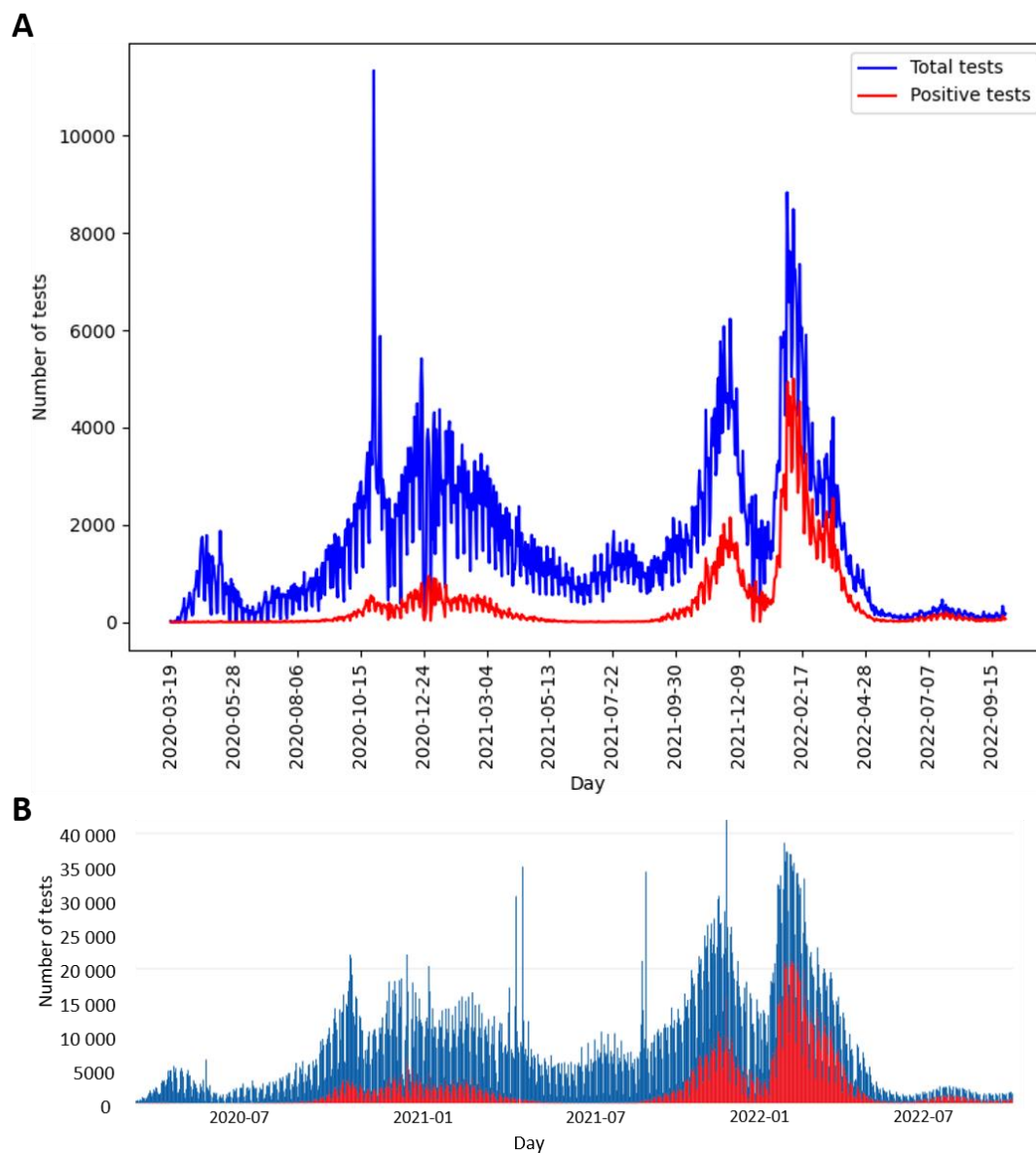
335

336

337

338

339



340 **Figure 3:** (A) Distribution of study PCR diagnostic tests performed per day (blue curve), corresponding
341 number of positive study tests per day (red curve), compared with (B) distribution of all diagnostic
342 tests performed per day within the Slovakian PCR testing (blue curve), corresponding number of
343 positive tests within the Slovakian PCR testing (red curve) [5]. (A, B) graphs show the date range 2020-
344 03-19 to 2022-09-29.

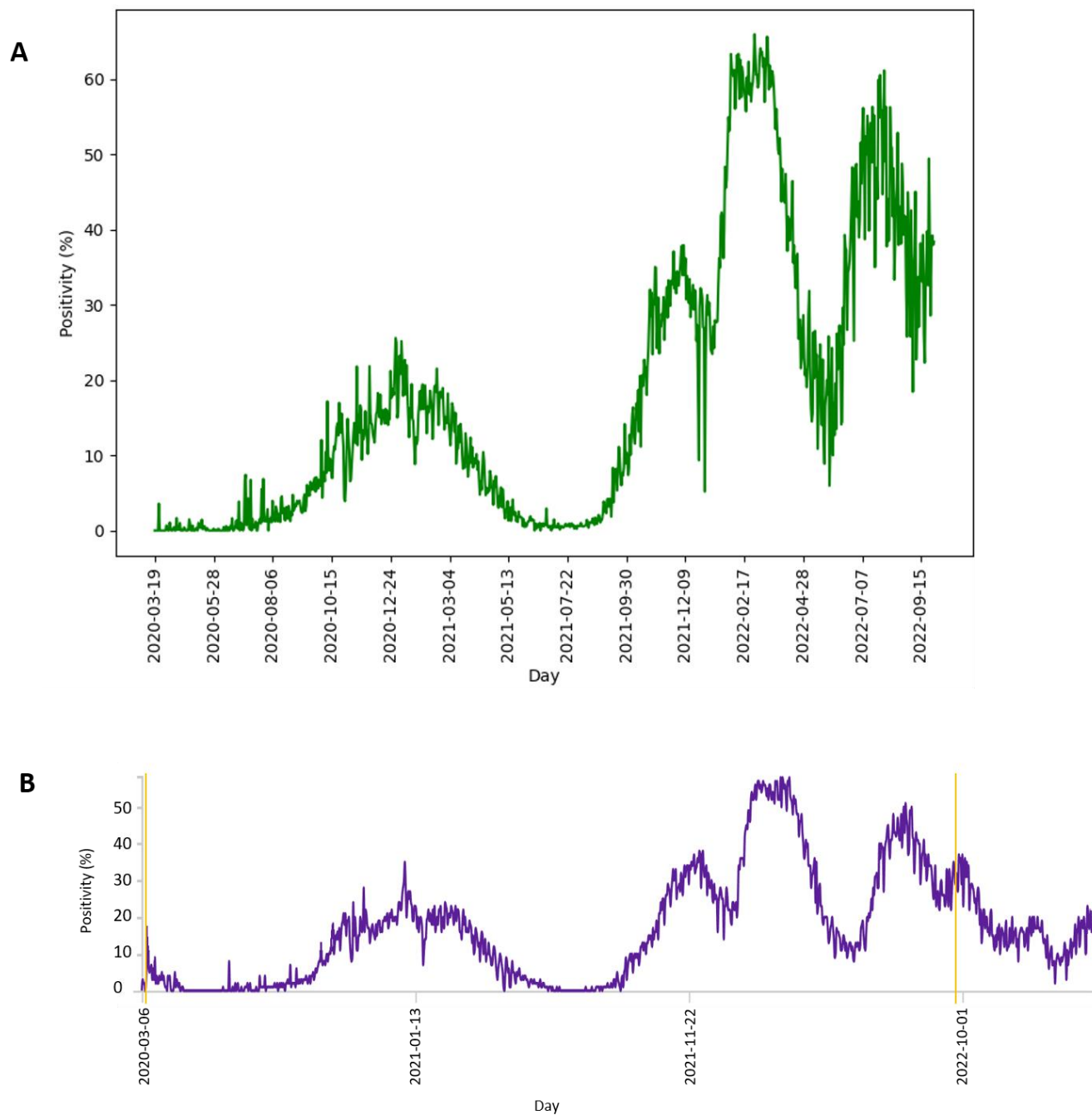
345

346

347

348

349



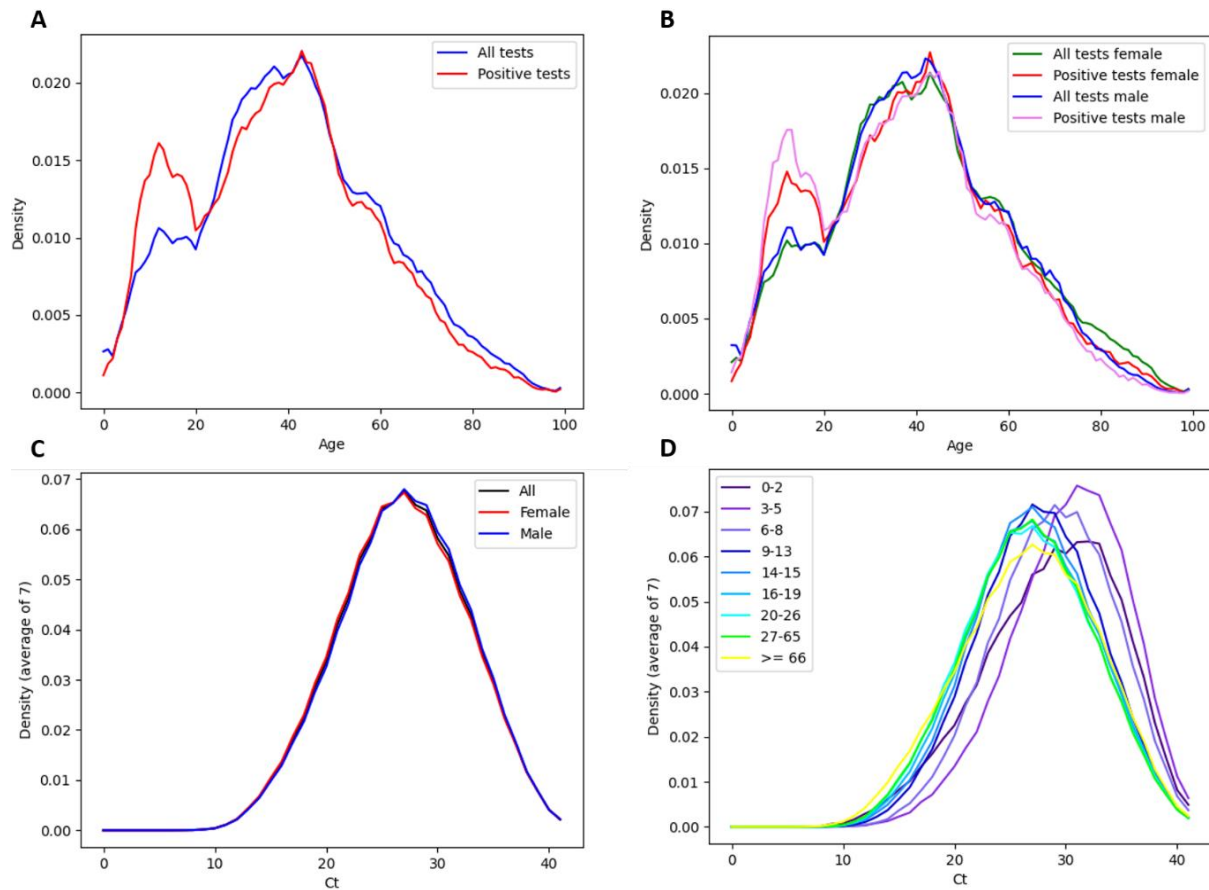
350 **Figure 4:** (A) Distribution of proportion of positive diagnostic tests of study performed per day,
351 compared with (B) distribution of proportion of all positive tests per day within the Slovakian PCR
352 testing [18]. Parallel yellow lines (B) define the period from 2020-03-19 to 2022-09-28.

353

354

355

356



357 **Figure 5:** (A) Age distribution of all tested individuals (blue curve), positively tested individuals (red
358 red curve). (B) Age distribution of all tested women (green curve), positive tested women (red curve), all
359 tested men (blue curve), positive tested men (pink curve). (C) Ct distribution of all diagnostic tests
360 (black curve), tests performed in females (red curve) tests performed in males (blue curve). (D) Ct
361 distribution of all diagnostic tests. The data is broken down by the age of the individuals.

362

363

364

365

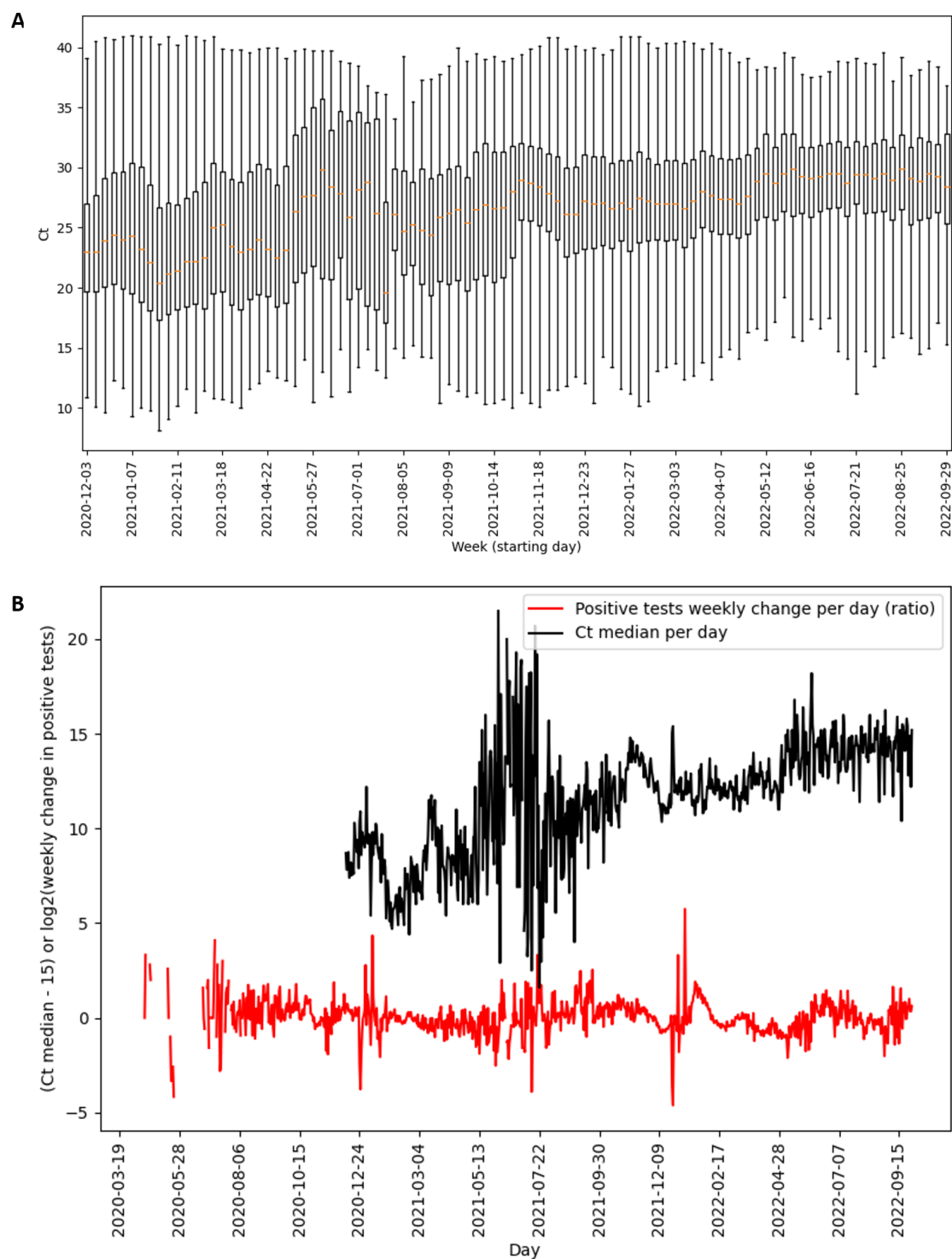
366

367

368

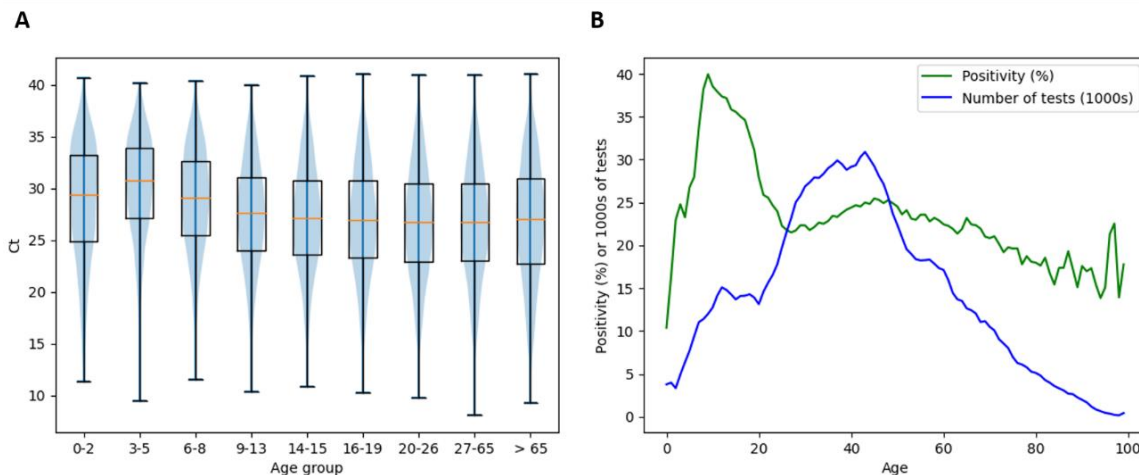
369

370



371 **Figure 6:** (A) Ct distributions of positive diagnostic tests shown as boxplots, supplemented by Ct
372 median values (orange segments). (B) Time course of median Ct per day (black curve) and change of
373 ratio positive tests per day with one week delay (red curve). (A, B) Gaps in the graphs reconstruct
374 pandemic days/ weeks with an insufficient number of samples (less than 50 performed PCR tests) non-
375 representative results not included in the evaluation.

376



377 **Figure 7: (A)** Distribution of Ct positive diagnostic tests in different age groups. Data are displayed as
 378 violin charts and notched boxplots supplemented with Ct median values (orange segments). **(B)**
 379 Distribution of positivity rate by age of individuals (green curve) and distribution of number of tests
 380 by age of individuals (blue curve).

381 3.6 Tables

382 Table 1: Number of positive/negative tests and total positivity of tests for individual age categories.
 383 Age distribution of the tested individuals along with the corresponding positivity rate, calculation of
 384 the total positivity of the study tests.

Age group	Positive	Negative	Total	Positivity (%)
0-2	1,806	9,273	11,079	16.30%
3-5	4,757	14,201	18,958	25.09%
6-8	10,689	21,112	31,801	33.61%
9-13	26,193	42,544	68,737	38.11%
14-15	9,983	17,968	27,951	35.72%
16-19	18,839	37,543	56,382	33.41%
20-26	28,861	90,078	118,939	24.27%
27-65	216,104	703,904	920,008	23.49%
>65	32,835	133,882	166,717	19.70%
Total	350,067	1,070,505	1,420,572	24.64%

385

386 4 References

387 [1] **Ministerstvo zdravotnictva SR. Available online:**
 388 <https://www.health.gov.sk/Clanok?koronavirus-pripad-prvy-opatrenia> (accessed on 23rd
 389 November [22]).

390 [2] **Ministerstvo zdravotnictva SR. Available online:**
 391 <https://www.health.gov.sk/Clanok?koronavirus-krizovy-stab-opatrenia> (accessed on 23rd
 392 November 2022).

- 393 [3] **Ministerstvo zdravotníctva SR. Available online:**
394 <https://www.health.gov.sk/Clanok?koronavirus-opatrenia-sprisenene> (accessed on 23rd
395 November 2022).
- 396 [4] WHO. **Available online:** [https://www.who.int/news/item/30-01-2023-statement-on-the-](https://www.who.int/news/item/30-01-2023-statement-on-the-fourteenth-meeting-of-the-international-health-regulations-(2005)-emergency-committee-regarding-the-coronavirus-disease-(covid-19)-pandemic)
397 [fourteenth-meeting-of-the-international-health-regulations-\(2005\)-emergency-committee-](https://www.who.int/news/item/30-01-2023-statement-on-the-fourteenth-meeting-of-the-international-health-regulations-(2005)-emergency-committee-regarding-the-coronavirus-disease-(covid-19)-pandemic)
398 [regarding-the-coronavirus-disease-\(covid-19\)-pandemic](https://www.who.int/news/item/30-01-2023-statement-on-the-fourteenth-meeting-of-the-international-health-regulations-(2005)-emergency-committee-regarding-the-coronavirus-disease-(covid-19)-pandemic) (accessed on 3rd March 2023).
- 399 [5] NCZI. Available online: <https://covid-19.nczisk.sk/sk> (accessed on 7th March 2023).
- 400 [6] UVZSR. Available online:
401 [https://www.uvzsr.sk/index.php?option=com_content&view=article&id=4590:britska-mutacia-](https://www.uvzsr.sk/index.php?option=com_content&view=article&id=4590:britska-mutacia-bola-na-slovensku-u-v-novembri-v-trenine-mohla-pred-sviatkami-dominova&catid=250:koronavirus-2019-ncov&Itemid=153)
402 [bola-na-slovensku-u-v-novembri-v-trenine-mohla-pred-sviatkami-](https://www.uvzsr.sk/index.php?option=com_content&view=article&id=4590:britska-mutacia-bola-na-slovensku-u-v-novembri-v-trenine-mohla-pred-sviatkami-dominova&catid=250:koronavirus-2019-ncov&Itemid=153)
403 [dominova&catid=250:koronavirus-2019-ncov&Itemid=153](https://www.uvzsr.sk/index.php?option=com_content&view=article&id=4590:britska-mutacia-bola-na-slovensku-u-v-novembri-v-trenine-mohla-pred-sviatkami-dominova&catid=250:koronavirus-2019-ncov&Itemid=153) (accessed on 23rd November 2022).
- 404 [7] Our world in data. Available online: [https://ourworldindata.org/explorers/coronavirus-data-](https://ourworldindata.org/explorers/coronavirus-data-explorer?zoomToSelection=true&time=2021-02-11&facet=none&pickerSort=desc&pickerMetric=location&hideControls=true&Metric=Confirmed+deaths&Interval=7-day+rolling+average&Relative+to+Population=true&Color+by+test+positivity=false&country=GBR~CZE~SVK~USA~LTU~MCO)
405 [explorer?zoomToSelection=true&time=2021-02-](https://ourworldindata.org/explorers/coronavirus-data-explorer?zoomToSelection=true&time=2021-02-11&facet=none&pickerSort=desc&pickerMetric=location&hideControls=true&Metric=Confirmed+deaths&Interval=7-day+rolling+average&Relative+to+Population=true&Color+by+test+positivity=false&country=GBR~CZE~SVK~USA~LTU~MCO)
406 [11&facet=none&pickerSort=desc&pickerMetric=location&hideControls=true&Metric=Confir](https://ourworldindata.org/explorers/coronavirus-data-explorer?zoomToSelection=true&time=2021-02-11&facet=none&pickerSort=desc&pickerMetric=location&hideControls=true&Metric=Confirmed+deaths&Interval=7-day+rolling+average&Relative+to+Population=true&Color+by+test+positivity=false&country=GBR~CZE~SVK~USA~LTU~MCO)
407 [med+deaths&Interval=7-](https://ourworldindata.org/explorers/coronavirus-data-explorer?zoomToSelection=true&time=2021-02-11&facet=none&pickerSort=desc&pickerMetric=location&hideControls=true&Metric=Confirmed+deaths&Interval=7-day+rolling+average&Relative+to+Population=true&Color+by+test+positivity=false&country=GBR~CZE~SVK~USA~LTU~MCO)
408 [day+rolling+average&Relative+to+Population=true&Color+by+test+positivity=false&country=](https://ourworldindata.org/explorers/coronavirus-data-explorer?zoomToSelection=true&time=2021-02-11&facet=none&pickerSort=desc&pickerMetric=location&hideControls=true&Metric=Confirmed+deaths&Interval=7-day+rolling+average&Relative+to+Population=true&Color+by+test+positivity=false&country=GBR~CZE~SVK~USA~LTU~MCO)
409 [GBR~CZE~SVK~USA~LTU~MCO](https://ourworldindata.org/explorers/coronavirus-data-explorer?zoomToSelection=true&time=2021-02-11&facet=none&pickerSort=desc&pickerMetric=location&hideControls=true&Metric=Confirmed+deaths&Interval=7-day+rolling+average&Relative+to+Population=true&Color+by+test+positivity=false&country=GBR~CZE~SVK~USA~LTU~MCO) (accessed on 23rd November 2022).
- 410 [8] Covid2019. Available online: [https://www.covid2019.sk/koronavirus-v-europe/koronavirus-v-](https://www.covid2019.sk/koronavirus-v-europe/koronavirus-v-slovenskej-republike/)
411 [slovenskej-republike/](https://www.covid2019.sk/koronavirus-v-europe/koronavirus-v-slovenskej-republike/) (accessed on 23rd November 2022).
- 412 [9] Mackay, I.M. Real-time PCR in the microbiology laboratory. *Clin Microbiol Infect.* 2004,
413 10(3):190-212.
- 414 [10] Rao, S.N.; Manissero D.; Steele V.R.; Pareja J. A Systematic Review of the Clinical Utility of
415 Cycle Threshold Values in the Context of COVID-19. *Infect Dis Ther* 2020, 9(3): 573-586.
- 416 [11] Tom, M.R.; Mina, M.J. To Interpret the SARS-CoV-2 Test, Consider the Cycle Threshold Value.
417 *Clin Infect Dis.* 2020, 71(16): 2252-4.
- 418 [12] Dehesh, P.; Baradaran, H.R.; Eshrati, B.; Motevalian, S.A.; Salehi, M.; Donyavi, T. The
419 Relationship Between Population-Level SARS-CoV-2 Cycle Threshold Values and Trend of
420 COVID-19 Infection: Longitudinal Study. *JMIR Public Health Surveill.* 2022, 8;8(11): e36424.
- 421 [13] Hay, J.A.; Kennedy-Shaffer, L.; Kanjilal, S.; Lennon, N.J.; Gabriel, S.B.; Lipsitch, M.; Mina,
422 M.J. Estimating epidemiologic dynamics from cross-sectional viral load distributions. *Science*
423 2021, 16;373(6552): eabh0635.
- 424 [14] MIRRI. Available online: [https://korona.gov.sk/wp-](https://korona.gov.sk/wp-content/uploads/2021/11/covid_automat_signalizacny_system_4v3.pdf)
425 [content/uploads/2021/11/covid_automat_signalizacny_system_4v3.pdf](https://korona.gov.sk/wp-content/uploads/2021/11/covid_automat_signalizacny_system_4v3.pdf) (accessed on 5th April
426 2023).
- 427 [15] Ministerstvo zdravotníctva SR. Available online: [https://www.health.gov.sk/Clanok?test-pcr-](https://www.health.gov.sk/Clanok?test-pcr-ochorenie)
428 [ochorenie](https://www.health.gov.sk/Clanok?test-pcr-ochorenie) (accessed on 5th April 2023).
- 429 [16] Štatistický úrad Slovenskej republiky. Available online: <https://www.scitanie.sk/> (accessed on
430 5th April 2023).
- 431 [17] Wikipedia. Available online:
432 [https://sk.wikipedia.org/wiki/Okres_%28Slovensko%29#/media/S%C3%BAbor:Okresy97_Slov](https://sk.wikipedia.org/wiki/Okres_%28Slovensko%29#/media/S%C3%BAbor:Okresy97_Slovakia.svg)
433 [akia.svg](https://sk.wikipedia.org/wiki/Okres_%28Slovensko%29#/media/S%C3%BAbor:Okresy97_Slovakia.svg) (accessed on 5th April 2023).
- 434 [18] Bot.Media. Available online: <https://mapa.covid.chat/> (accessed on 7th March 2023).

- 435 [19] Montesinos-López, J.C.; Daza-Torres, M.L.; García, Y.E.; Barboza, L.A.; Sanchez, F.; Schmidt,
436 A.J.; Pollock, B.H.; Nuño, M. The Role of SARS-CoV-2 Testing on Hospitalizations in
437 California. *Life* 2021, 11, 1336.
- 438 [20] Ministerstvo zdravotníctva SR. Available online:
439 <https://www.health.gov.sk/Clanok?koronavirus-opatrenia-mimoriadne> (accessed on 23rd
440 November 2022).
- 441 [21] Dóvera. Available online: [https://www.dovera.sk/aktuality/4897-na-pcr-test-uz-treba-vymenny-](https://www.dovera.sk/aktuality/4897-na-pcr-test-uz-treba-vymenny-listok)
442 [listok](https://www.dovera.sk/aktuality/4897-na-pcr-test-uz-treba-vymenny-listok) (accessed on 19th December 2022).
- 443 [22] Humphreys, D.P.; Gavin, K.M.; Olds, K.M.; Bonaca, M.P.; Bauer, T.A. At-home sample
444 collection is an effective strategy for diagnosis and management of symptomatic and
445 asymptomatic SARS-CoV-2 carriers. *BMC Infectious Diseases*. 2022, 22(1), 1–10.
- 446 [23] Mokhtar, K.M. Improved RT-PCR SARS-Cov2 results interpretation by indirect determination
447 of cut-off cycle threshold value. *MedRxiv*, 2020.
- 448 [24] Piubelli, C.; Deiana, M.; Pomari, E.; Silva, R.; Bisoffi, Z.; Formenti, F.; Perandin, F.; Gobbi, F.;
449 Buonfrate, D. Overall decrease in SARS-CoV-2 viral load and reduction in clinical burden: the
450 experience of a hospital in northern Italy. *Clin Microbiol Infec*. 2021, 27(1).
- 451 [25] Jones, T.C.; Biele, G.; Muhlemann, B.; Veith, T.; Schneider, J.; Beheim-Schwarzbach, J.;
452 Bleicker, T.; Tesch, J.; Schmidt, M.L.; Sander, L.E.; Kurth, F.; Menzel, P.; Schwarzer, R.;
453 Zuchowski, M.; Hofmann, J.; Krumbholz, A.; Stein, A.; Edelmann, A.; Corman, V.M.; Drosten,
454 C. Estimating infectiousness throughout SARS-CoV-2 infection course. *Science* 2021,
455 373(6551).
- 456 [26] Walker A.S.; Pritchard E.; House T.; Robotham, J.V.; Birrell, P.J.; Bell, I.; Bell, J.I.; Newton,
457 J.N.; Farrar, J.; Diamond, I.; Studley, R.; Hay, J.; Vihta, K. D.; Peto, T. E.; Stoesser, N.; Matthews,
458 P. C.; Eyre, D. W.; Pouwels, K. B.; COVID-19 Infection Survey team. Ct threshold values, a
459 proxy for viral load in community SARS-CoV-2 cases, demonstrate wide variation across
460 populations and over time. *Elife* 2021,12;10: e64683.
- 461 [27] Yin, N.; Dellicour, S.; Daubie, V.; Franco, N.; Wautier, M.; Faes, C.; Van Cauteren, D.; Nymark,
462 L.; Hens, N.; Gilbert, M.; Hallin, M.; Vandenberg, O. Leveraging of SARS-CoV-2 PCR cycle
463 thresholds values to forecast COVID-19 trends. *Front. Med. (Lausanne)* 2021, 1;8: 743988.
- 464 [28] Tso, C.F.; Garikipati, A.; Green-Saxena, A.; Mao, Q.; Das, R. Correlation of population SARS-
465 CoV-2 cycle threshold values to local disease dynamics: exploratory observational study. *JMIR*
466 *Public Health Surveill*. 2021, 7(6): e28265.
- 467 [29] Musalkova, D.; Piherova, L.; Kwasny O.; Dindova Z.; Stancik L.; Hartmannova H.; Slama O.;
468 Peckova P.; Pargac J.; Minarik G.; Zima T.; Bleyer A. J.; Radina M.; Pohludka M.; Kmoch S.
469 Trends in SARS-CoV-2 Cycle Threshold Values in the Czech Republic from April 2020 to April
470 2022. *Sci. Rep.* 2023, 13(1):6156.
- 471 [30] Gómez-de-Mariscal, E., Guerrero, V., Sneider, A.; Jayatilaka, H.; Phillip, J.M.; Wirtz, D.;
472 Muñoz-Barrutia, A. Use of the p-values as a size-dependent function to address practical
473 differences when analyzing large datasets. *Sci Rep*, 2021, 11, 20942.
- 474 [31] Zhu, Y.S.; Bloxham, C.J.; Hulme, K.D.; Sinclair, J.E.; Tong, Z.W.M; Steele, L.E.; Noye, E.C.;
475 Lu, J.H.; Xia, Y.; Chew, K.Y.; Pickering, J.; Gilks, C.; Bowen, A.C.; Short, K.R.A Meta-analysis
476 on the Role of Children in Severe Acute Respiratory Syndrome Coronavirus 2 in Household
477 Transmission Clusters. *Clin. Infect. Dis.* 2021, 72(12): E1146-E53.
- 478 [32] Yoo, H.M.; Kim, I.H.; Kim, S. Nucleic Acid Testing of SARS-CoV-2. *Int. J. Mol. Sci.* 2021, 22,
479 6150.

- 480 [33] AACC. Available online: <https://www.aacc.org/science-and-research/covid-19->
481 [resources/statements-on-covid-19-testing/aacc-recommendation-for-reporting-sars-cov-2-cycle-](https://www.aacc.org/science-and-research/covid-19-resources/statements-on-covid-19-testing/aacc-recommendation-for-reporting-sars-cov-2-cycle-threshold-ct-values)
482 [threshold-ct-values](https://www.aacc.org/science-and-research/covid-19-resources/statements-on-covid-19-testing/aacc-recommendation-for-reporting-sars-cov-2-cycle-threshold-ct-values) (accessed on 24th March 2023).
- 483 [34] Gagnon, F., Bhatt, M., Zemek, R., Webster, R. J., Johnson-Obaseki, S., Harman, S.
484 Nasopharyngeal swabs vs. saliva sampling for SARS-CoV-2 detection: A cross-sectional survey
485 of acceptability for caregivers and children after experiencing both methods. *PloS one*, 2020,
486 7(7), e0270929.
- 487 [35] Huang C., Wang Y., Li X., Zhao J., Hu Y., Zhang L., et al. Clinical features of patients infected
488 with 2019 novel coronavirus in Wuhan, China. *Lancet*, 2020, 395(10223):497-506.
- 489 [36] Ponti G., Maccaferri M., Ruini C., Tomasi A., Ozben T. Biomarker associated with COVID-19
490 disease progression. *Crit Rev Clin Lab Sci*, 2020:1–11.
- 491 [37] Zaninotto M., Mion M., Cosma C., Rinaldi D., Plebani M. Presepsin in risk stratification of
492 SARS-CoV-2 patients. *Clin Chim Acta*, 2020, 507:161–3.
- 493 [38] Hansen C.B., Bayarri-Olmos R., Kristensen M.K., Pilely K., Hellemann D., Garred P.
494 Complement related pattern recognition molecules as markers of short-term mortality in intensive
495 care patients. *J Infect*, 2020, 80(4):378–87.
- 496 [39] Torres, M., Collins, K., Corbit, M., Ramirez, M., Winters, C. R., Katz, L., Ross, M., Relkin, N.,
497 Zhou, W. Comparison of saliva and nasopharyngeal swab SARS-CoV-2 RT-qPCR testing in a
498 community setting. *J infect.*, 2021, 82(4):84-123.
- 499

500 **5 Ethics statement**

501 The study was conducted in accordance with the Declaration of Helsinki, and approved by the Ethical
502 committee of Bratislava Self-Governing District under the identifier 03228/2021/HF from January 12,
503 2021. All patients have filled the questionnaires with relevant information regarding their health status
504 in relation to COVID-19 and signed informed consent.

505 **6 Conflict of Interest**

506 Andrej Gnip and Gabriel Minarik are employees of Medirex Group Academy n.p.o., Nitra, Slovakia.
507 Emilia Mikova and Elena Tibenska are employees of Medirex, a.s., Pezinok, Slovakia. Other authors
508 declare that the research was conducted in the absence of any commercial or financial relationships
509 that could be construed as a potential conflict of interest.

510 **7 Author Contributions**

511 Conceptualization, GM and VR; methodology, GM, AG and NJ; software, AG; validation, GM and
512 NJ; formal analysis, AG; investigation, DK, GB and RS; resources, EM and ET; data curation, EM and
513 ET; writing—original draft preparation, NJ; writing—review and editing, GM; visualization, NJ, GM
514 and AG; supervision, GM; project administration, GM; funding acquisition, GM and VR. All authors
515 have read and agreed to the published version of the manuscript. All authors contributed to the article
516 and approved the submitted version.

517 **8 Funding**

518 This work was supported by the OPII program as the project - Research on COVID-19 progressive
519 diagnostic methods and biomarkers useful in early detection of individuals at increased risk of severe
520 disease, ITMS: 313011ATA2, co-financed by the ERDF.

521 **9 Acknowledgments**

522 The authors thank the laboratory Medirex, a.s. for providing data for the study.

523 **10 Supplementary Material**

524 The following supporting information - table with all samples and laboratory information included in
525 the analysis can be downloaded at:

526 **11 Data Availability Statement**

527 NA.