

1           **Long-term outcomes of hospitalized SARS-CoV-2/COVID-19 patients with and without**  
2                           **neurological involvement: 3-year follow-up assessment**

3  
4           **Short title: Long-term outcomes of COVID-19 patients with neurological involvement**

5  
6  
7       Anna Eligulashvili<sup>1</sup>, Moshe Gordon<sup>1</sup>, Jimmy S Lee<sup>1</sup>, Jeylin Lee<sup>1</sup>, Shiv Mehrotra-Varma<sup>1</sup>, Jai Mehrotra-  
8       Varma<sup>1</sup>, Kevin Hsu <sup>2</sup>, Imanyah Hilliard<sup>1</sup>, Kristen Lee<sup>1</sup>, Arleen Li<sup>1</sup>, Muhammed Amir Essibayi<sup>3</sup>, Judy  
9       Yee<sup>1</sup>, David J Altschul<sup>3</sup>, Emad Eskandar<sup>3</sup>, Mark F. Mehler<sup>4</sup>, and Tim Q. Duong<sup>1,\*</sup>

10  
11       <sup>1</sup>Department of Radiology, Montefiore Health System and Albert Einstein College of Medicine, Bronx, New York

12       <sup>2</sup>Department of Radiology, New York University Grossman School of Medicine, New York, New York

13       <sup>3</sup>Department of Neurological Surgery, Montefiore Health System and Albert Einstein College of Medicine, Bronx,  
14                           New York

15       <sup>4</sup>Department of Neurology, Montefiore Health System and Albert Einstein College of Medicine, Bronx, New York

16  
17       \* Corresponding Author: Tim Duong, PhD, Department of Radiology, Albert Einstein College of  
18       Medicine, 1300 Morris Park Avenue, Bronx, NY 10461, [tim.duong@einsteinmed.edu](mailto:tim.duong@einsteinmed.edu)

19  
20       **Key words:** long covid, post-acute sequelae SARS-CoV-2 infection (PASC), brain imaging, MRI,  
21       computed tomography

22 **ABBREVIATIONS**

- 23 ALT: alanine aminotransferase  
24 ARDS: acute respiratory distress syndrome  
25 AST: aspartate transaminase  
26 BNP: brain natriuretic peptide  
27 BUN: blood urea nitrogen  
28 CDM: Common Data Model  
29 CHF: congestive heart failure  
30 CI: confidence interval  
31 CKD: chronic kidney disease  
32 CNS: central nervous system  
33 COPD: chronic obstructive pulmonary disease  
34 CRP: C-reaction protein  
35 CT: computed tomography  
36 Cr: creatinine  
37 DDIM: D-dimer  
38 EMR: electronic medical record  
39 HI: hyperintensity  
40 HR: hazard ratio  
41 INR: international normalized ratio  
42 LDH: lactate dehydrogenase  
43 Lymph: lymphocyte count  
44 MACE: major adverse cardiovascular events  
45 MAP: mean arterial pressure  
46 MRI: magnetic resonance imaging  
47 MVD: microvascular disease  
48 OHDSI: Observational Health Data Sciences and Information  
49 OMOP: Observational Medical Outcomes Partnership  
50 OR: odds ratio  
51 SBP: systolic blood pressure  
52 SNF: skilled nursing facility  
53 TNT: troponin-T  
54 WBC: white blood cell count  
55 WM: white matter

56 **ABSTRACT**

57 Background and Objectives: Acute neurological manifestations are a common complication of acute  
58 COVID-19 disease. This study investigated the 3-year outcomes of patients with and without significant  
59 neurological manifestations during initial COVID-19 hospitalization.

60  
61 Methods: Patients infected by SARS-CoV-2 between March 1 and April 16, 2020 and hospitalized in the  
62 Montefiore Health System in the Bronx, an epicenter of the early pandemic, were included. Follow-up  
63 data was captured up to January 23, 2023 (3 years post COVID-19). This cohort consisted of 414  
64 COVID-19 patients with significant neurological manifestations and 1199 propensity-matched COVID-  
65 19 patients without neurological manifestations. Primary outcomes were mortality, stroke, heart attack,  
66 major adverse cardiovascular events (MACE), reinfection, and hospital readmission post-discharge.  
67 Secondary outcomes were clinical neuroimaging findings (hemorrhage, active stroke, prior stroke, mass  
68 effect, and microhemorrhage, white-matter changes, microvascular disease, and volume loss). Predictive  
69 models were used to identify risk factors of mortality post-discharge.

70  
71 Results: More patients in the neurological cohort were discharged to acute rehabilitation (10.54% vs  
72 3.68%,  $p<0.0001$ ), skilled nursing facilities (30.67% vs 20.78%,  $p=0.0002$ ) and fewer to home (55.27%  
73 vs 70.21%,  $p<0.0001$ ) compared to the matched controls. Incidence of readmission for any medical  
74 reason (65.70% vs 60.72%,  $p=0.036$ ), stroke (6.28% vs 2.34%,  $p<0.0001$ ), and MACE (20.53% vs  
75 16.51%,  $p=0.032$ ) was higher in the neurological cohort post-discharge. Neurological patients were more  
76 likely to die post-discharge (58 (14.01%) vs 94 (7.84%),  $p=0.0001$ ) compared to controls (HR=2.346,  
77 95% CI=(1.586, 3.470),  $p<0.0001$ ). The major causes of death post-discharge were heart disease  
78 (14.47%), sepsis (13.82%), influenza and pneumonia (11.18%), COVID-19 (8.55%) and acute respiratory  
79 distress syndrome (7.89%). Factors associated with mortality after leaving the hospital were belonging to  
80 the neurological cohort (OR=1.802 (1.237, 2.608),  $p=0.002$ ), discharge disposition (OR=1.508, 95%  
81 CI=(1.276, 1.775),  $p<0.0001$ ), congestive heart failure (OR=2.281 (1.429, 3.593),  $p=0.0004$ ), higher

82 COVID-19 severity score (OR=1.177 (1.062, 1.304), p=0.002), and older age (OR=1.027 (1.010, 1.044),  
83 p=0.002). There were no group differences in gross radiological findings, except the neurological cohort  
84 showed significantly more age-adjusted brain volume loss (p<0.05) compared to controls.

85

86 Discussion: COVID-19 patients with neurological manifestations have worse long-term outcomes  
87 compared to matched controls. These findings raise awareness and the need for closer monitoring and  
88 timely interventions for COVID-19 patients with neurological manifestations.

## 89 INTRODUCTION

90 Severe acute neurological events – such as ischemic stroke, seizure, intracranial hemorrhage and  
91 thrombosis, and encephalopathy – have been reported in COVID-19 patients(1-8). The causes of these  
92 central nervous system (CNS) manifestations are multifactorial. There is conflicting evidence whether  
93 SARS-CoV-2 infects neuronal cells, with some studies reporting neuronal invasion(9), while others report  
94 no evidence of direct infection(10, 11). Additional studies suggest that a diffuse microvasculopathy may  
95 ensue with endothelial compromise, micro-infarctions, subsequent micro-hemorrhages, and microglial  
96 conglomerates with innate immune activation. Nonetheless, CNS manifestations could also arise from  
97 secondary effects, such as from respiratory distress, cardiovascular stress, sepsis, hypercoagulation, and  
98 host-mediated immune responses triggered by SARS-CoV-2 infection. Patients with neurological  
99 complications have been shown to have worse *acute* COVID-19 outcomes compared to propensity-  
100 matched controls(12). However, the long-term outcomes of COVID-19 survivors with CNS  
101 manifestations are unknown.

102 The goal of this study was to evaluate the 3-year outcomes of COVID-19 patients with significant  
103 neurological complaints that warranted neuroimaging during COVID-19 when compared with propensity-  
104 matched controls without significant neurological complaints. Improved understanding of the long-term  
105 outcomes of COVID-19 patients with CNS manifestations could help to identify at-risk patients and  
106 enable timely interventions to address the potentially high burden of care among these COVID-19  
107 survivors.

108

## 109 METHODS

110

### 111 *Data sources*

112 This observational study followed the STROBE guideline. This is a follow-up retrospective study  
113 of a previously reported retrospective cohort study of adult patients(12) admitted to the Montefiore Health  
114 System due to COVID-19 between March 01 and April 16, 2020 with confirmed SARS-CoV-2 infection

115 by real-time reverse transcriptase PCR-positive assay testing. Follow-up data was captured up to January  
116 23, 2023 (3 years follow-up).

117 The original neurological cohort consisted of 636 hospitalized COVID-19 patients who  
118 experienced various neurological signs and symptoms that warranted neuroimaging during COVID-19  
119 hospitalization. Neurological involvement included acute stroke (confirmed by imaging), new or  
120 recrudescence seizures, anatomic brain lesions (subdural hematoma, brain tumor, chronic infarction, or  
121 nonspecific lesions), presence of altered mentation with evidence for impaired cognition or arousal, and  
122 neuro-COVID-19 complex (headache, anosmia, ageusia, chemesthesis, vertigo, presyncope, paresthesias,  
123 cranial nerve abnormalities, ataxia, dysautonomia, and skeletal muscle injury with normal orientation and  
124 arousal signs). The original control group consisted of 1743 hospitalized COVID-19 patients by 3:1  
125 propensity-matching for age and COVID-19 severity score who did not have significant neurological  
126 issues during hospitalization. After excluding patients who died during hospitalization or were missing  
127 from our database, the neurological cohort and control cohort had sample sizes of 414 and 1199 patients,  
128 respectively. Note that the samples differed slightly from the original paper because a few additional  
129 patients were found to meet the inclusion/exclusion criteria.

130

### 131 ***Data abstraction***

132 Health data were extracted automatically from the electronic medical records as described  
133 previously(13-18). De-identified health data were obtained for research after standardization to the  
134 Observational Medical Outcomes Partnership (OMOP) Common Data Model (CDM) version 6. OMOP  
135 CDM represents healthcare data from diverse sources, which are stored in standard vocabulary  
136 concepts(19), allowing for the systematic analysis of disparate observational databases, including data  
137 from the electronic medical record (EMR), administrative claims, and disease classifications systems  
138 (e.g., ICD-10, SNOWMED, LOINC, etc.). ATLAS, a web-based tool developed by the Observational  
139 Health Data Sciences and Informatics (OHDSI) community that enables navigation of patient-level,  
140 observational data in the CDM format, was used to search vocabulary concepts and facilitate cohort

141 building. Data were subsequently exported and queried as SQLite database files using the DB Browser for  
142 SQLite (version 3.12.0). To ensure data accuracy, our team performed extensive cross validation of all  
143 major variables extracted by manual chart reviews on subsets of patients(13-18).

144

145 Discharge dispositions: Discharge disposition of survivors from COVID-19 hospitalization were  
146 categorized as home (with or without home care), hospice, acute rehabilitation, skilled nursing facility  
147 (SNF), and others (i.e., custodial care, supportive care, and psychiatric care).

148

149 Data abstraction: Age, gender, race, ethnicity, comorbidities, and laboratory test data were extracted  
150 from electronic medical records at follow-up extending to January 23, 2023. Incidence of stroke, heart  
151 attack, major adverse cardiac events (MACE, defined as the composite of cardiovascular death, nonfatal  
152 stroke, nonfatal myocardial infarction, new-onset nonfatal heart failure, thromboembolism and nonfatal  
153 cardiogenic shock(20, 21)), reinfection, and readmission after COVID-19 discharge for any reason were  
154 tabulated at 3-year follow-up. For non-survivors, the cause of death was ascertained via chart review and  
155 categorized using the primary reason for death as reported on the death certificate.

156 Preexisting comorbidities included chronic obstructive pulmonary disease (COPD) and asthma,  
157 diabetes, congestive heart failure (CHF), and chronic kidney disease (CKD). Vital signs and laboratory  
158 data included temperature, systolic blood pressure (SBP), arterial pressure, D-dimer (DDIM),  
159 international normalized ratio (INR), blood urea nitrogen (BUN), creatinine (Cr), sodium, glucose,  
160 aspartate transaminase (AST), alanine aminotransferase (ALT), white blood cell count (WBC),  
161 lymphocyte count (Lymph) ferritin (FERR), C-reactive protein (CRP), procalcitonin, lactate  
162 dehydrogenase (LDH), brain natriuretic peptide (BNP), troponin-T (TNT), and arterial oxygen saturation.  
163 Laboratory data for COVID-19 admission and at follow-up (most recent) were obtained.

164

165 COVID-19 disease severity score: In-hospital COVID-19 disease severity scores(12) were the sum of five  
166 components that range from 0 to 10 points, on admission: (1) age by decile (age greater than 60, 70, and

167 80 earned 1, 2, and 3 points, respectively), (2) mean arterial pressure (MAP) indicating hypotension  
168 (MAP below 80, 70, and 60 earned 1, 2, and 3 points), (3) oxygen saturation below 94% indicating  
169 impaired pulmonary function (1 point), (4) BUN greater than 30 indicating impaired renal function (1  
170 point), and (5) INR greater than 1.2 and CRP greater than 10, indicating coagulopathy and inflammatory  
171 response. Scores ranged from 0 to 10 with higher score reflecting worse COVID-19 disease severity.

172  
173 Imaging assessment: Head computed tomography (CT) and brain magnetic resonance imaging  
174 (MRI) examinations were assessed at three different time points: those obtained before their COVID-19  
175 hospitalization (most recent), during COVID-19 hospitalization, or after COVID-19 hospitalization (most  
176 recent) if available. Images were assessed by board-certified radiologists (K.H., J.L., each with at least 10  
177 years of experience) and radiology residents (I.H., K.L., A.L.) under the supervision of the board-certified  
178 radiologists, blinded to the patient cohort designation. To establish assessment criteria and the scoring  
179 system, our board-certified radiologists and residents worked together to reach consensus by evaluating  
180 over a dozen images. Two residents scored each image and at least one board-certified radiologist  
181 reviewed and adjudicated. Major findings on both CT and MRI, documented for their absence or presence  
182 of hemorrhage, active stroke, prior stroke, mass effect, and microhemorrhage (on MRI only). In addition,  
183 white-matter (WM) change, microvascular disease (MVD), and volume loss on CT and MRI were graded  
184 as 0 for normal or not present, 1 for mild, 2 for moderate, and 3 for severe, taking account the *age* of  
185 patient. MRIs were additionally graded for extent of WM lesions or hyperintensities (HI) using the same  
186 grading scale. Findings were tabulated for pre-, during and post COVID-19. In cases where patients had  
187 both CT and MRI at a specific timepoint, MRI was used.

188 Finally, changes in imaging findings before and after COVID-19, if available, were assessed  
189 using the grading scale of 0: no change,  $\pm 1$ : mild change,  $\pm 2$ : moderate change, and  $\pm 3$  severe change,  
190 with positive changes indicating worsening and negative indicating improvement between the two time  
191 points. Pre-COVID-19 images were used as a baseline if both pre- and during COVID-19 images were  
192 available.



193

194 *Primary outcomes:* Primary outcomes were mortality, stroke, heart attack, MACE, reinfection, and  
195 hospital readmission post discharge January 23, 2023 (3 years post COVID-19). Secondary outcomes  
196 were qualitative and score-based clinical neuroimaging findings, which included the absence or presence  
197 of hemorrhage, active stroke, prior stroke, mass effect, and microhemorrhage, as well as scores of WM  
198 changes, MVD, and volume loss.

199 Associative models using logistic regression were employed to identify variables associated with  
200 mortality after discharge. Input for age was a continuous variable. Input for discharge disposition status  
201 was a single variable. Input for COVID-19 severity scores was a continuous variable. The rest of the  
202 variables used in the model were categorical variables. Odds ratios (OR) and 95% confidential interval  
203 (CI) were computed. In addition, Kaplan-Meier curves were constructed and analyzed using GraphPad  
204 Prism, with the outcome event being classified as dead (death date) or alive (most recent patient  
205 encounter). The survival curves of the neurological and control cohorts were compared with the logrank  
206 test (Mantel-Cox) method, resulting in a log rank hazard ratio (HR), 95% CI, and p-value.

207

### 208 *Statistical Analysis*

209 Analysis of group differences of demographic and clinical variables employed  $\chi^2$  tests for  
210 categorical variables and two-tailed t-tests for continuous variables via the statistical library in RStudio.  
211 Analysis of associative variables was performed in RStudio using a logistic regression model. Statistical  
212 comparison of imaging scores and changes of scores from baseline (pre or during COVID-19  
213 hospitalization) to follow-up (post-COVID-19 hospitalization) employed unpaired t-test.  $P < 0.05$  was  
214 considered statistically significant unless otherwise specified. Statistics were not adjusted for multiple  
215 comparison due to the exploratory nature of the study.

216

### 217 *Standard Protocol Approvals, Registrations, and Patient Consents*

218 This retrospective study using real world data was approved by our Institutional Review Board  
219 (#2021-13658) with a waiver of informed consent. All methods were performed in accordance with  
220 relevant guidelines and regulations pertaining to human subjects.

221

### 222 ***Data Availability Statement***

223 Reasonable request of data is available by contacting the corresponding author.

224

## 225 **RESULTS**

226 Of the original neurological cohort of 636 patients, 414 were discharged alive and 371 returned to  
227 our health system. Of the original control cohort of 1743, 1199 were discharged alive and 1071 returned  
228 to our health system. The overall attrition rate was 10.60%.

229

### 230 ***Discharge disposition***

231 **Figure 1** shows the discharge dispositions of the neurological and control cohorts stratified by  
232 COVID-19 severity score. Patients with high severity scores were less likely to be discharged home and  
233 more likely to be discharged to a SNF or hospice in both groups. However, there were relatively more  
234 patients disposed to SNF and relatively fewer patients disposed to home in the neurological cohort  
235 compared to the control cohort.

236

### 237 ***Primary outcomes of neurological vs control cohort***

238 **Table 1** shows the profiles of the survivors at discharge grouped by neurological and control  
239 cohorts. There were no significant group differences in age ( $69.71 \pm 15.80$  vs  $70.26 \pm 15.14$ ,  $p > 0.05$ ),  
240 female gender composition (44.93% vs 48.21%,  $p > 0.05$ ), all major comorbidities ( $p > 0.05$ ) and race and  
241 ethnicity ( $p > 0.05$ ), except Black non-Hispanic (42.51% vs 36.03%,  $p = 0.009$ ), and Hispanic (33.57% vs  
242 38.20%,  $p = 0.047$ ). More patients in the neurological cohort were discharged to acute rehabilitation  
243 (10.54% vs 3.68%,  $p < 0.0001$ ) and SNF (30.67% vs 20.78%,  $p = 0.0002$ ) and fewer survivors in the

244 neurological cohort were discharged to home (55.27% vs 70.21%,  $p<0.0001$ ) compared to the control  
245 cohort. With respect to laboratory data, there were few group differences between those at admission and  
246 at follow-up, as well as between groups (**Supplemental Table 1**). Some laboratory data at admission  
247 were worse than those at follow-up and laboratory data of the neurological cohort was worse than those of  
248 the control cohort.

249 Incidence of readmission (65.70% vs 60.72%,  $p=0.036$ ), stroke (6.28% vs 2.34%,  $p<0.0001$ ), and  
250 MACE (20.53% vs 16.51%,  $p=0.032$ ) were significantly higher in the neurological cohort than the control  
251 cohort. There were however no significant group differences in heart attack and reinfection after  
252 discharge (all  $p>0.05$ ). Mortality rates were also higher in the neurological cohort compared to the control  
253 cohort at 0.5 years (7.73% vs 3.67%,  $p=0.0004$ ), 1 year (9.18% vs 4.92%,  $p=0.0009$ ), and 3 years  
254 (14.01% vs 7.84%,  $p=0.0001$ ). Kaplan-Meier survival analysis (**Figure 2**) showed that the neurological  
255 cohort had a significantly lower survival probability than the control cohort at all timepoints (HR=2.346,  
256 95% CI=(1.586, 3.470),  $p<0.0001$ ).

257

### 258 Outcomes versus COVID-19 severity scores

259 **Supplemental Figure 1A** shows the distribution of COVID-19 severity scores in each cohort,  
260 confirming proper propensity matching by severity score among survivors after COVID-19  
261 hospitalization discharge. Primary outcomes were analyzed with respect to COVID-19 severity score for  
262 survivors and non-survivors post discharge (**Figure 1B-F**). Readmission for any medical reasons were  
263 similar among all severity scores for both cohorts. Incidence of stroke was high for all severity scores in  
264 the neurological cohort but was generally lower for matching scores in the control cohort. Incidence of  
265 heart attack also appeared to be trending upwards as severity score increased for both cohorts. The  
266 percent of patients who had MACE was distributed over a range of scores for both cohorts, with a higher  
267 COVID-19 severity scores showing a slightly higher percentage of patients with MACE at follow-up.  
268 Non-survivors at follow-up had higher COVID-19 severity score compared to survivors.

269

270 Cause of death post COVID-19 discharge

271 There were no group differences in cause of death between patients belonging to neurological and  
272 control cohorts ( $p>0.05$ ). Beside the unknown cause of death (30.92%), the major causes of death after  
273 discharge were heart disease (13.79% neurological, 15.38% control), sepsis (8.62%, 17.58%), influenza  
274 and pneumonia (13.79%, 9.89%), COVID-19 (10.34%, 7.69%) and acute respiratory distress syndrome  
275 (ARDS) (10.34%, 6.59%) (**Table 2**).

276

277 Survivors and non-survivors post discharge

278 **Table 3A** compared the profiles of survivors and non-survivors in the neurological and control  
279 cohorts post discharge. There are few differences of survivors and non-survivors between cohorts. Both  
280 within the neurological and control cohorts, non-survivors were significantly older and had higher  
281 COVID-19 severity score compared to survivors. Although no differences in comorbidities were observed  
282 in the neurological cohort, control non-survivors had higher incidence of hypertension, diabetes, CHF,  
283 and CKD. Both neurological and control non-survivors were less likely to be discharged home and more  
284 likely to be discharged to SNF.

285

286 Risk factors for mortality after discharge

287 A logistic regression model found 5 significant variables associated with mortality post discharge  
288 (**Table 3B**). These variables were belonging to the neurological cohort (OR=1.802 (1.237, 2.608),  
289  $p=0.002$ ), discharge disposition (OR=1.508, 95% CI=(1.276, 1.775),  $p<0.0001$ ), congestive heart failure  
290 (OR=2.281 (1.429, 3.593),  $p=0.0004$ ), COVID-19 severity score (OR=1.177 (1.062, 1.304),  $p=0.002$ ),  
291 and age (OR=1.027 (1.010, 1.044),  $p=0.002$ ). Male gender (OR=1.387 (0.963, 2.004),  $p=0.08$ ) was  
292 trending significance.

293

294 Imaging findings

295 **Table 4A** summarizes the pre-, intra-, and post- COVID-19 neuroradiological findings. The  
296 numbers of pre-, intra-, and post- COVID-19 patients with imaging studies varied. Of those with imaging,  
297 about 20% were MRI and 80% were CT. For qualitative assessment, 30-40% of patients had prior strokes  
298 for all three time points, whereas the presence of hemorrhage, active stroke and/or mass effect were  
299 relatively low (0-10% with most around 5%). There were, however, no group differences in these  
300 qualitative findings for all three time points ( $p>0.05$ ).

301 For score-based assessment, the average scores for age-appropriate WM change and MVD were  
302 about 1 (mild abnormality), and the average scores for age-appropriate volume loss and WM lesions were  
303 about 0.5 (no to mild abnormality). Distribution of scores were similar between groups. There were no  
304 differences in scores between groups, except for volume loss post COVID-19 (average score:  $0.72\pm 0.71$   
305 neurological vs  $0.57\pm 0.69$  control,  $p=0.045$ ; and score of 0: 42.36% neurological vs. 53.78%,  $p=0.037$ ).

306 **Table 4B** shows the changes in imaging findings between baseline (pre- or intra-COVID-19) and  
307 follow-up (post-COVID-19). There were significant increases in the incidence of active stroke  
308 (neurological: 6.25%,  $p=0.021$ ; control: 3.82%,  $p=0.039$ ), prior stroke (12.5%,  $p=0.0003$ ; 9.55%,  
309  $p=0.002$ ), and microhemorrhage (7.14%,  $p=0.012$ ; 6.37%,  $p=0.004$ ) between the two time points,  
310 indicative of age-related effects. There were, however, no group differences ( $p>0.05$  for all).

311 WM changes (neurological:  $0.12\pm 0.44$ ,  $p=0.006$ ; control:  $0.18\pm 0.46$ ,  $p<0.0001$ ), MVD  
312 ( $0.15\pm 0.41$ ,  $p=0.0001$ ;  $0.18\pm 0.46$ ,  $p<0.0001$ ) and volume loss ( $0.15\pm 0.41$ ,  $p=0.0001$ ;  $0.17\pm 0.42$ ,  
313  $p<0.00101$ ) were higher (worsening) post-COVID compared to baseline for both neurological and control  
314 cohorts. There were, however, also no group differences ( $p>0.05$  for all).

315

## 316 DISCUSSION

317 This study investigated the 3-year outcomes of hospitalized COVID-19 patients with and without  
318 major neurological issues. The major findings are: i) COVID-19 patients with significant neurological  
319 issues that warranted neuroimaging were more likely to be discharged to acute rehabilitation and skilled  
320 nursing facilities compared to matched controls, ii) the neurological cohort had higher mortality rates

321 after discharge (HR=2.346,  $p<0.0001$ ) compared to controls, iii) the incidence of readmission, stroke, and  
322 MACE, but not heart attack or reinfection, were higher in the neurological cohort at 3 years follow-up, iv)  
323 the primary causes of death after discharge for both cohorts were heart failure, sepsis, influenza and  
324 pneumonia, COVID-19 and ARDS, v) patients who died post-discharge were significantly older, more  
325 likely to be male, had higher COVID-19 severity score, and those were sent to skilled nursing facilities at  
326 discharge compared to survivors, vi) there were no group differences in gross radiological findings with  
327 respect to hemorrhage and stroke, except the neurological cohort showed significantly more age-  
328 appropriate volume loss than the control cohort.

329

330 *Disposition:* Approximately half of the neurological patients and one-thirds of the control patients were  
331 discharged to SNF, acute rehabilitation, or hospice. These findings indicated that many COVID-19  
332 patients were not functionally independent after discharge(22-24), especially those in the neurological  
333 cohort. Few studies today have reported home, SNF, and acute rehabilitation discharge rates after  
334 COVID-19 hospitalization(22-26). These findings suggest that patients in the neurological cohort likely  
335 needed more follow-up medical care at discharge.

336

337 *Primary outcomes:* The majority (60-65%) of all neurological and control patients were readmitted to our  
338 health system for medical reasons over 3 years. This is not surprising for our cohort due to advanced age  
339 and high prevalence of comorbidities, although it is higher than reported in some studies(27-30).

340 Readmission could be due to age-related illness or medical conditions exacerbated by COVID-19. The  
341 neurological cohort had a higher readmission rate than the control cohort, suggesting that a higher burden  
342 of disease during COVID-19 hospitalization may be associated with a higher probability of re-  
343 hospitalization.

344 The incidence of stroke was 2-6% and of heart attack was 4-5% in both groups. The incidence of  
345 MACE after discharge (16-20%) was higher than other reported previously in COVID-19 who did not  
346 have neurological issues(18). A few studies have suggested COVID-19 exerts long-term cardiovascular

347 effects(16, 31-33), consistent with a disease that affects the cardiovascular system and thus can result in  
348 MACE after severe infection warranting hospitalization. Approximately 4-5% of both cohorts  
349 experienced COVID-19 re-infection. This rate of re-infection is slightly higher than what is reported  
350 elsewhere(34, 35). The higher rate of re-infection may be attributed to the urban setting of congested  
351 environs, high rates of comorbidities and healthcare disparities associated with lower socioeconomic  
352 status(36).

353         Of those who died post-discharge, more than half died within the first 0.5 years in both groups,  
354 suggesting that most of these deaths were likely COVID-19 related. The cumulative mortality rates of the  
355 neurological and control cohorts at 3 years post-discharge were 14% and 8%, respectively. The marked  
356 mortality rate differences between groups are highlighted by the Kaplan-Meier analysis. Those who died  
357 at follow-up in both groups were 8 years older and more likely to be male as compared to survivors.  
358 Elderly patients may be more prone to exhibiting early neurologic symptoms because of limited cognitive  
359 reserve. This is widely seen in other medical conditions such as urosepsis. Patients presenting with early  
360 neurologic compromise could be a harbinger of susceptibility for higher mortality across other disease  
361 states. Male gender has been previously reported to have worse acute in-hospital outcomes, including  
362 higher rate of multi-organ injury, critical care illness, and in-hospital mortality(37-40). Here we reported  
363 male gender also had worse long-term outcomes post COVID-19 discharge.

364         Logistic regression model identified discharge disposition to be the top risk factor for post-  
365 discharge mortality, followed by CHF, COVID-19 severity score, belonging to the neurological cohort,  
366 and age. CHF was the only comorbidity that was significantly associated with post-discharge mortality.  
367 Patients who had more severe COVID-19 disease were also more likely to die post discharge. Belonging  
368 to the neurological cohort was also independent risk factor for post-discharge mortality. It is not  
369 surprising that advanced age is associated with higher post-discharge mortality, but advanced age ranked  
370 lower than other variables mentioned above. Note that OR for male gender was trending significance and  
371 we predicted that large sample sizes could result in significant findings. Taken together, these findings

372 underscore the independent risk factors that contributed to post discharge mortality and notably belonging  
373 to the neurological cohort is a significant independent risk factor.

374  
375 Cause of Death: The causes of death were similar between neurological and control cohorts, consistent  
376 with findings using logistic regression in which belonging to neurological cohort was an important but not  
377 the most important associative variable of post COVID-19 discharge mortality. The primary known  
378 causes of death in both the neurological and control cohorts were heart disease, sepsis, influenza and  
379 pneumonia, COVID-19, and ARDS. Sepsis, pneumonia, and ARDS might be related to or be triggered by  
380 COVID-19, although they could also be a result of other medical events. It is possible that COVID-19 as  
381 a cause of death was underestimated as a result of imprecise categorization in the death certificates. Note  
382 that about one-third of the causes of death were specified as unknown on the death certificates. It is  
383 possible that some patients died of senescence and no primary cause of death was noted.

384  
385 Imaging Findings: Age of patient was taken into consideration when assessing neuroradiological  
386 findings. Imaging findings of control and neurological patients displayed differential profiles of  
387 abnormalities that were consistent with age and comorbidities in this population. The differences in  
388 radiological findings between baseline and follow-up showed age-related effects. However, there were  
389 generally no group differences in qualitative nor score-based findings, except that the neurological cohort  
390 showing higher volume loss post-COVID-19 compared to controls.

391 Several case reports and few cohort studies have identified reduction in grey-matter thickness,  
392 ischemic stroke, decrease in global brain size, cerebral microstructural changes, and persistent WM  
393 changes associated with COVID-19(41-47). There is likely some reporting bias in case or case-series  
394 studies as positive clinical imaging findings associated with COVID-19 are more likely to be reported.  
395 Most of these studies do not compare findings to baseline, which makes it difficult to discern whether  
396 imaging abnormalities were pre-existing or a consequence of COVID-19 disease. None of these studies  
397 employ a scoring system to accentuate the degree of abnormality. Our study is novel because of its large



398 and diverse patient population, long follow-up times, the use of a scoring system, and comparison  
399 between baseline and follow-up studies to 3 years post-discharge. It is possible that COVID-19 related  
400 changes in the brain anatomy and structure could take time to manifest, and we predict that some COVID-  
401 19 patients will likely experience accelerated aging and high incidence of age-related disorders. Brain  
402 imaging is important because it could provide neural correlates of post-COVID-19 neurological sequela,  
403 which include, but is not limited to, neurological symptoms, neurocognitive symptoms, fatigue, memory  
404 loss, anxiety, depression, and post-traumatic stress disorder(8, 48-50).

405

406         Taken together these current observations contribute new insights concerning our understanding  
407 of the longitudinal effects of neurological involvement in long COVID. In terms of nervous system  
408 involvement, persistence and evolution, there are likely bidirectional interactions between the nervous and  
409 the immune systems that orchestrate a composite pro-inflammatory, hypercoagulable, hypoxemic, and  
410 immune dysregulated state(7). In addition, these dynamic processes could contribute to accelerated brain  
411 aging, stress pathway-mediated neural injury responses, features of traumatic encephalopathy,  
412 demyelination, neurodegeneration, and accompanying preferential cortical atrophy as we have identified  
413 in this study. Moreover, multiple communication routes between the central and peripheral nervous  
414 systems and the body in long COVID create systemic organ system, tissue and cellular interfaces that  
415 impair organismal homeostasis to give rise to persistent deregulated regenerative and plasticity responses.  
416 These pathological processes promote chronic multi-organ dysfunction and can lead to a spectrum of  
417 stressor states that predispose to organ fibrosis, tissue degeneration and even dysplastic and neoplastic  
418 conditions with associated metabolic derangement, immune dysregulation, inflammatory processes, and  
419 additional features of SARS-CoV-2/COVID-19-mediated dyshomeostasis syndrome, including  
420 proteotoxicity and protean epigenetic derangements. Such biological contingencies suggest that the  
421 multifactorial nature of the neurological manifestations of COVID-19 may put patients at higher risk of  
422 long-term functional disabilities and death as we have currently observed. Importantly, our increasing  
423 understanding of the nature of the deregulation of dynamic nervous system-systemic crosstalk displayed

424 in response to SARS-CoV-2 may allow us to devise innovative and interdisciplinary mitigation strategies  
425 to alleviate the long-term sequelae preferentially caused by early neurological involvement in COVID-19.

426

### 427 ***Limitations***

428 This is one of the largest cohort studies of imaging findings and one of the longest follow-up  
429 studies of COVID-19 survivors. This study however has several limitations. Our patient cohort was  
430 limited to patients infected with COVID-19 during the first wave of the pandemic, when hospitals were  
431 overburdened, COVID-19 vaccines were not yet available, and COVID-19 treatments were limited. The  
432 patient profiles (i.e., age composition) might differ from those of subsequent waves. Additionally, the  
433 selection of patients was subjective and may have introduced selection bias. In building the control  
434 cohort, propensity scoring only factored in age and COVID-19 severity to remain consistent with the  
435 index study.

436 Although the attrition is low (10%), patients who did not return to our health system could not be  
437 studied. While it is possible that returning patients were more likely to have more severe COVID-19, our  
438 patient data consisted of those who returned for any medical reasons, including regular checkups. On the  
439 other hand, those who did not return might have expired. Our current study was not powered to address  
440 differences due to race and ethnicity because our cohort consisted of large proportions of Blacks and  
441 Hispanics but low proportions of other race and ethnic groups. Imaging sample sizes were small because  
442 not all patients had imaging performed at all three time points. The mixture of MRI and CT, which may  
443 have different sensitivities for various accompanying pathologies. More sophisticated imaging methods  
444 are warranted. Future studies should compare results with those of the general population without SARS-  
445 CoV-2 infection. Other factors such as reinfection, COVID-19 vaccination status, and influenza  
446 vaccination status could affect long-term outcomes. As with any retrospective study, there could be other  
447 unintended patient selection biases and unaccounted for confounders.

448

### 449 **Conclusions**

450 Patients with significant neurological findings during COVID-19 hospitalization were more likely  
451 to have worse outcomes at 3-year follow-up compared to propensity matched controls. Improved  
452 understanding of the long-term outcomes of COVID-19 patients with neurological involvement could  
453 help to develop effective screening methods and innovative interventions to address the potentially high  
454 burden of care among these COVID-19 survivors.

455 **Acknowledgments**

456 None

457 **Study Funding**

458 No targeted funding reported.

## 459 REFERENCES

- 460 1. Zhao YM, Shang YM, Song WB, Li QQ, Xie H, Xu QF, et al. Follow-up study of the pulmonary  
461 function and related physiological characteristics of COVID-19 survivors three months after recovery.  
462 *EClinicalMedicine*. 2020;25:100463.
- 463 2. Carvalho-Schneider C, Laurent E, Lemaigen A, Beaufile E, Bourbao-Tournois C, Laribi S, et al.  
464 Follow-up of adults with noncritical COVID-19 two months after symptom onset. *Clin Microbiol Infect*.  
465 2020.
- 466 3. Rubin R. As Their Numbers Grow, COVID-19 "Long Haulers" Stump Experts. *JAMA*. 2020.
- 467 4. Tenforde MW, Kim SS, Lindsell CJ, Billig Rose E, Shapiro NI, Files DC, et al. Symptom  
468 Duration and Risk Factors for Delayed Return to Usual Health Among Outpatients with COVID-19 in a  
469 Multistate Health Care Systems Network - United States, March-June 2020. *MMWR Morb Mortal Wkly*  
470 *Rep*. 2020;69(30):993-8.
- 471 5. Carfi A, Bernabei R, Landi F, Gemelli Against C-P-ACSG. Persistent Symptoms in Patients  
472 After Acute COVID-19. *JAMA*. 2020;324(6):603-5.
- 473 6. Davis HE, Assaf GS, McCorkell L, Wei H, Low RJ, Re'em Y, et al. Characterizing long COVID  
474 in an international cohort: 7 months of symptoms and their impact. *EClinicalMedicine*. 2021;38:101019.
- 475 7. Anand H, Ende V, Singh G, Qureshi I, Duong TQ, Mehler MF. Nervous System-Systemic  
476 Crosstalk in SARS-CoV-2/COVID-19: A Unique Dyshomeostasis Syndrome. *Front Neurosci*.  
477 2021;15:727060.
- 478 8. Iosifescu AL, Hoogenboom WS, Buczek AJ, Fleysher R, Duong TQ. New-onset and persistent  
479 neurological and psychiatric sequelae of COVID-19 compared to influenza: A retrospective cohort study  
480 in a large New York City healthcare network. *Int J Methods Psychiatr Res*. 2022;31(3):e1914.
- 481 9. Song E ZC, Israelow B, Lu-Culligan A, Prado AV, Skriabine S, Lu P, Weizman OE, Liu F, Dai  
482 Y, Szigeti-Buck K, Yasumoto Y, Wang G, Castaldi C, Heltke J, Ng E, Wheeler J, Alfajaro MM,  
483 Levavasseur E, Fontes B, Ravindra NG, Van Dijk D, Mane S, Gunel M, Ring A, Kazmi SAJ, Zhang K,  
484 Wilen CB, Horvath TL, Plu I, Haik S, Thomas JL, Louvi A, Farhadian SF, Huttner A, Seilhean D, Renier  
485 N, Bilguvar K, Iwasaki A. Neuroinvasion of SARS-CoV-2 in human and mouse brain. *J Exp Med*.  
486 2021;218(3):e20202135.
- 487 10. Brann DH TT, Weinreb C, Lipovsek M, Van den Berge K, Gong B, Chance R, Macaulay IC,  
488 Chou HJ, Fletcher RB, Das D, Street K, de Bezieux HR, Choi YG, Risso D, Dudoit S, Purdom E, Mill J,  
489 Hachem RA, Matsunami H, Logan DW, Goldstein BJ, Grubb MS, Ngai J, Datta SR. Non-neuronal  
490 expression of SARS-CoV-2 entry genes in the olfactory system suggests mechanisms underlying  
491 COVID-19-associated anosmia. *Sci Adv*. 2020;6(31):eabc5801.
- 492 11. Camargo-Martínez W L-MI, Escobar-Collazos A, Navarro-Coronado A, Moscote-Salazar L,  
493 Pacheco-Hernández A, Janjua T, Bosque-Varela P. Post-COVID 19 neurological syndrome: Implications  
494 for sequelae's treatment. *J Clin Neurosci*. 2021;88:219-25.
- 495 12. Eskandar EN, Altschul DJ, de la Garza Ramos R, Cezayirli P, Unda SR, Benton J, et al.  
496 Neurologic Syndromes Predict Higher In-Hospital Mortality in COVID-19. *Neurology*.  
497 2021;96(11):e1527-e38.
- 498 13. Hoogenboom WS, Pham A, Anand H, Fleysher R, Buczek A, Soby S, et al. Clinical  
499 characteristics of the first and second COVID-19 waves in the Bronx, New York: A retrospective cohort  
500 study. *Lancet Reg Health Am*. 2021;3:100041.
- 501 14. Hoogenboom WS, Fleysher R, Soby S, Mirhaji P, Mitchell WB, Morrone KA, et al. Individuals  
502 with sickle cell disease and sickle cell trait demonstrate no increase in mortality or critical illness from  
503 COVID-19 - A fifteen hospital observational study in the Bronx, New York. *Haematologica*.  
504 2021;106(11):3014-6.
- 505 15. Lu JY, Ho SL, Buczek A, Fleysher R, Hou W, Chacko K, et al. Clinical predictors of recovery of  
506 COVID-19 associated-abnormal liver function test 2 months after hospital discharge. *Sci Rep*.  
507 2022;12(1):17972.

- 508 16. Lu JY, Wilson J, Hou W, Fleysher R, Herold BC, Herold KC, et al. Incidence of new-onset in-  
509 hospital and persistent diabetes in COVID-19 patients: comparison with influenza. *EBioMedicine*.  
510 2023;90:104487.
- 511 17. Lu JY, Hou W, Duong TQ. Longitudinal prediction of hospital-acquired acute kidney injury in  
512 COVID-19: a two-center study. *Infection*. 2022;50(1):109-19.
- 513 18. Lu JY, Boparai MS, Shi C, Henninger EM, Rangareddy M, Veeraraghavan S, et al. Long-term  
514 outcomes of COVID-19 survivors with hospital AKI: association with time to recovery from AKI.  
515 *Nephrol Dial Transplant*. 2023.
- 516 19. Hripcsak G, Duke JD, Shah NH, Reich CG, Huser V, Schuemie MJ, et al. Observational Health  
517 Data Sciences and Informatics (OHDSI): Opportunities for Observational Researchers. *Stud Health*  
518 *Technol Inform*. 2015;216:574-8.
- 519 20. Rao A, Ranka S, Ayers C, Hendren N, Rosenblatt A, Alger HM, et al. Association of Kidney  
520 Disease With Outcomes in COVID-19: Results From the American Heart Association COVID-19  
521 Cardiovascular Disease Registry. *J Am Heart Assoc*. 2021;10(12):e020910.
- 522 21. Ye X, Ma T, Blais JE, Yan VKC, Kang W, Chui CSL, et al. Association between BNT162b2 or  
523 CoronaVac COVID-19 vaccines and major adverse cardiovascular events among individuals with  
524 cardiovascular disease. *Cardiovasc Res*. 2022;118(10):2329-38.
- 525 22. Musheyev B, Janowicz R, Borg L, Matarlo M, Boyle H, Hou W, et al. Characterizing non-  
526 critically ill COVID-19 survivors with and without in-hospital rehabilitation. *Sci Rep*. 2021;11(1):21039.
- 527 23. Musheyev B, Borg L, Janowicz R, Matarlo M, Boyle H, Singh G, et al. Functional status of  
528 mechanically ventilated COVID-19 survivors at ICU and hospital discharge. *J Intensive Care*.  
529 2021;9(1):31.
- 530 24. Musheyev B, Boparai MS, Kimura R, Janowicz R, Pampanye S, Hou W, et al. Longitudinal  
531 medical subspecialty follow-up of critically and non-critically ill hospitalized COVID-19 survivors up to  
532 24 months after discharge. *Intern Emerg Med*. 2023:1-10.
- 533 25. Lavery AM PL, Ko JY, Chevinsky JR, DeSisto CL, Pennington AF, Kompaniyets L, Datta SD,  
534 Click ES, Golden T, Goodman AB, Mac Kenzie WR, Boehmer TK, Gundlapalli AV. Characteristics of  
535 Hospitalized COVID-19 Patients Discharged and Experiencing Same-Hospital Readmission - United  
536 States, March-August 2020. *MMWR Morb Mortal Wkly Rep*. 2020;69(45):1695-9.
- 537 26. Patel S TG, Rajan A, Creech Z, Walters R, Ng I, Destache C, Vivekanandan R, Tierney M,  
538 Velagapudi M. Discharge Disposition and Clinical Outcomes of Patients Hospitalized with COVID-19.  
539 *Int J Infect Dis*. 2023:S1201-9712(23)00040-1.
- 540 27. Ayoubkhani D KK, Nafilyan V, Maddox T, Humberstone B, Diamond I, Banerjee A. Post-covid  
541 syndrome in individuals admitted to hospital with covid-19: retrospective cohort study. *BMJ Open*.  
542 2021;372.
- 543 28. Sotoodeh Ghorbani S TN, Bayat S, Ghajari H, Mohseni P, Hashemi Nazari SS. Epidemiologic  
544 characteristics of cases with reinfection, recurrence, and hospital readmission due to COVID-19: A  
545 systematic review and meta-analysis. *J Med Virol*. 2022;94(1):44-53.
- 546 29. Alanli R KM, Yalcin KS. Readmission rates of patients with COVID-19 after hospital discharge.  
547 *Rev Assoc Med Bras (1992)*. 2021;67(11):1610-5.
- 548 30. Freire MP OM, Magri MMC, Tavares BM, Marinho I, Natri ACSS, Filho GB; HCFMUSP  
549 COVID-19 Study Group; Levin AS. Frequency and factors associated with hospital readmission after  
550 COVID-19 hospitalization: the importance of post-COVID diarrhea. *Clinics (Sao Paulo)*.  
551 2022;77:100061.
- 552 31. Tobler DL PA, Naderi S, Ambrosy AP, Slade JJ. Long-Term Cardiovascular Effects of COVID-  
553 19: Emerging Data Relevant to the Cardiovascular Clinician. *Curr Atheroscler Rep*. 2022;24(7):563-70.
- 554 32. Silva Andrade B SS, de Assis Soares WR, de Souza Rangel F, Santos NO, Dos Santos Freitas A,  
555 Ribeiro da Silveira P, Tiwari S, Alzahrani KJ, Góes-Neto A, Azevedo V, Ghosh P, Barh D. Long-COVID  
556 and Post-COVID Health Complications: An Up-to-Date Review on Clinical Conditions and Their  
557 Possible Molecular Mechanisms. *Viruses*. 2021;13(4):700.

- 558 33. Mohammad KO LA, Rodriguez JBC. Cardiac Manifestations of Post-Acute COVID-19 Infection.  
559 *Curr Cardiol Rep.* 2022;24(12):1775-83.
- 560 34. Lawandi A WS, Sun J, Demirkale CY, Danner RL, Klompas M, Gundlapalli A, Datta D, Harris  
561 AM, Morris SB, Natarajan P, Kadri SS. Suspected Severe Acute Respiratory Syndrome Coronavirus 2  
562 (SARS-COV-2) Reinfections: Incidence, Predictors, and Healthcare Use Among Patients at 238 US  
563 Healthcare Facilities, 1 June 2020 to 28 February 2021. *Clin Infect Dis.* 2022;74(8):1489-92.
- 564 35. Slezak J BK, Fischer H, Broder B, Ackerson B, Tartof S. Rate and severity of suspected SARS-  
565 Cov-2 reinfection in a cohort of PCR-positive COVID-19 patients. *Clin Microbiol Infect.*  
566 2021;27(12):1860.e7-.e10.
- 567 36. Khanijahani A IS, Gholipour K, Azami-Aghdash S, Naghibi D. A systematic review of  
568 racial/ethnic and socioeconomic disparities in COVID-19. *Int J Equity Health.* 2021;20(1):248.
- 569 37. Haitao T VJ, Abeykoon J, Ghamrawi R, Gunaratne M, Jayachandran M, Narang K, Parashuram  
570 S, Suvakov S, Garovic VD. COVID-19 and Sex Differences: Mechanisms and Biomarkers. *Mayo Clin*  
571 *Proc.* 2020;95(10):2189-203.
- 572 38. Fabião J SB, Pedrollo EF, Gerchman F, Kramer CK, Leitão CB, Pinto LC. Why do men have  
573 worse COVID-19-related outcomes? A systematic review and meta-analysis with sex adjusted for age.  
574 *Braz J Med Biol Res.* 2022;55:e11711.
- 575 39. Attaway AH SR, Bhimraj A, Biehl M, Hatipoğlu U. Severe covid-19 pneumonia: pathogenesis  
576 and clinical management. *BMJ Open.* 2021;372:n436.
- 577 40. Gao YD DM, Dong X, Zhang JJ, Kursat Azkur A, Azkur D, Gan H, Sun YL, Fu W, Li W, Liang  
578 HL, Cao YY, Yan Q, Cao C, Gao HY, Brüggem MC, van de Veen W, Sokolowska M, Akdis M, Akdis  
579 CA. Risk factors for severe and critically ill COVID-19 patients: A review. *Allergy.* 2021;76(2):428-55.
- 580 41. Douaud G LS, Alfaro-Almagro F, Arthofer C, Wang C, McCarthy P, Lange F, Andersson JLR,  
581 Griffanti L, Duff E, Jbabdi S, Taschler B, Keating P, Winkler AM, Collins R, Matthews PM, Allen N,  
582 Miller KL, Nichols TE, Smith SM. SARS-CoV-2 is associated with changes in brain structure in UK  
583 Biobank. *Nature.* 2022;604(7907):697-707.
- 584 42. Lu Y LX, Geng D, Mei N, Wu PY, Huang CC, Jia T, Zhao Y, Wang D, Xiao A, Yin B. Cerebral  
585 Micro-Structural Changes in COVID-19 Patients - An MRI-based 3-month Follow-up Study.  
586 *EClinicalMedicine.* 2020;25:100484.
- 587 43. Hellgren L BTU, Samuelsson K, Levi R, Divanoglou A, Blystad I. Brain MRI and  
588 neuropsychological findings at long-term follow-up after COVID-19 hospitalisation: an observational  
589 cohort study. *BMJ Open.* 2021;11(10).
- 590 44. Huang S ZZ, Yang D, Zhao W, Zeng M, Xie X, Du Y, Jiang Y, Zhou X, Yang W, Guo H, Sun H,  
591 Liu P, Liu J, Luo H, Liu J. Persistent white matter changes in recovered COVID-19 patients at the 1-year  
592 follow-up. 2022;145(5):1830-8.
- 593 45. Lu Y, Li X, Geng D, Mei N, Wu PY, Huang CC, et al. Cerebral Micro-Structural Changes in  
594 COVID-19 Patients - An MRI-based 3-month Follow-up Study. *EClinicalMedicine.* 2020;25:100484.
- 595 46. Hellgren L, Birberg Thornberg U, Samuelsson K, Levi R, Divanoglou A, Blystad I. Brain MRI  
596 and neuropsychological findings at long-term follow-up after COVID-19 hospitalisation: an observational  
597 cohort study. *BMJ Open.* 2021;11(10):e055164.
- 598 47. Huang S ZZ, Yang D, et al. Persistent white matter changes in recovered COVID-19 patients at  
599 the 1-year follow-up. *Brain.* 2022;145(5):1830-8.
- 600 48. Moghimi N, Di Napoli, M., Biller, J., Siegler, J. E., Shekhar, R., McCullough, L. D., Harkins, M.  
601 S., Hong, E., Alaouieh, D. A., Mansueto, G., & Divani, A. A. The Neurological Manifestations of Post-  
602 Acute Sequelae of SARS-CoV-2 infection. *Curr Neurol Neurosci Rep.* 2021;21(9).
- 603 49. Graham EL CJ, Orban ZS, Lim PH, Szymanski AL, Taylor C, DiBiase RM, Jia DT, Balabanov  
604 R, Ho SU, Batra A, Liotta EM, Korálnik IJ. Persistent neurologic symptoms and cognitive dysfunction in  
605 non-hospitalized Covid-19 "long haulers". *Ann Clin Transl Neurol.* 2021;8(5):1073-85.
- 606 50. Wang F KR, Stefano GB. Long-Term Respiratory and Neurological Sequelae of COVID-19. *Med*  
607 *Sci Monit.* 2020;26:e928996.



609 **Table 1.** Demographics, comorbidities, and outcomes of survivor patients in the neurological and control  
 610 cohorts. Mean±SD or n (%). \* p<0.05, \*\* p<0.01, \*\*\* p<0.001 between the neurological and control  
 611 cohorts.  
 612

	Neurologic Cohort (N=414)	Control Cohort (N=1199)
<b>Patient Characteristics</b>		
Age, years old (at admission)	69.71±15.80	70.26±15.14
Female (%)	186 (44.93%)	578 (48.21%)
<b>Combined Race and Ethnicity</b>		
White, not Hispanic	27 (6.52%)	94 (7.84%)
Black, not Hispanic	176 (42.51%)	432 (36.03%)*
Hispanic	139 (33.57%)	458 (38.20%)*
Other	62 (14.98%)	169 (14.10%)
<b>Comorbidities (at admission)</b>		
Hypertension	186 (44.93%)	523 (43.62%)
COPD/Asthma	42 (10.14%)	144 (12.01%)
Diabetes	126 (30.43%)	343 (28.61%)
CHF	49 (11.84%)	118 (9.84%)
CKD	90 (21.74%)	223 (18.60%)
<b>Discharge Disposition</b>		
Home	208 (50.24%)	799 (66.64%)*
Acute Rehab	43 (10.39%)	40 (3.34%)*
SNF	148 (35.75%)	304 (25.35%)*
Hospice	6 (1.45%)	15 (1.25%)
Other	9 (2.17%)	41 (3.42%)
<b>Outcomes (Jan 10, 2023)</b>		
Hospital Readmission	272 (65.70%)	728 (60.72%)*
Stroke	26 (6.28%)	28 (2.34%)*
Heart Attack	22 (5.31%)	50 (4.17%)
MACE	85 (20.53%)	198 (16.51%)*
<b>Mortality after discharge</b>		
0.5 years	32 (7.73%)	44 (3.67%)*
1.0 years	38 (9.18%)	59 (4.92%)*
3.0 years	58 (14.01%)	94 (7.84%)*
SARS-CoV-2 reinfection	18 (4.35%)	55 (4.59%)

613

614 **Table 2.** Primary cause of death of patients who died after discharge. \* p<0.05, \*\* p<0.01, \*\*\* p<0.001  
615 between the neurological and control cohorts.  
616  
617

<b>Cause of Death</b>	<b>Neurological (N=58)</b>	<b>Control (N=94)</b>
Unknown	16 (27.59%)	31 (34.07%)
Heart Disease	8 (13.79%)	14 (15.38%)
Sepsis	5 (8.62%)	16 (17.58%)
Influenza and Pneumonia	8 (13.79%)	9 (9.89%)
COVID-19	6 (10.34%)	7 (7.69%)
ARDS, Hypoxia	6 (10.34%)	6 (6.59%)
Other (GI Bleed, Pancreatitis, ICH, Acute Liver Failure)	3 (5.17%)	6 (6.59%)
Cancer	2 (3.45%)	2 (2.20%)
Nephritis, Nephrotic Syndrome, and Nephrosis	2 (3.45%)	1 (1.10%)
Stroke (Cerebrovascular Diseases)	1 (1.72%)	1 (1.10%)
Accidents (Unintentional Injuries)	1 (1.72%)	1 (1.10%)

618



619 **Table 3.** (A) Demographics and comorbidities of patients who died versus survived after discharge in the  
 620 neurological and control cohorts. Patients lost to follow up were excluded. Mean±SD or n (%). \* p<0.05,  
 621 \*\* p<0.01, \*\*\* p<0.001 between survivors or non-survivors in the neurological and control cohorts. ^  
 622 p<0.05, ^^ p<0.01, ^^ ^ p<0.001 between survivors and non-survivors in the same cohort. (B) Odds ratios  
 623 of mortality post discharge.

(A)	Neurological Cohort (N=371)		Control Cohort (N=1043)	
	Survivors N=313 (84.37%)	Non-survivors N=58 (15.63%)	Survivors N=949 (90.99%)	Non-survivors N=94 (9.01%)
<b>Patient Characteristics</b>				
Age, year old (at admission)	67.85±15.85	76.40±11.71***	69.20±14.95	76.56±11.23***
Female	147 (46.96%)	22 (37.93%)	480 (50.58%)	43 (45.74%)
<b>Combined Race and Ethnicity</b>				
White, non-Hispanic	23 (7.35%)	3 (5.17%)	68 (7.17%)	9 (9.57%)
Black, non-Hispanic	129 (41.21%)	28 (48.28%)	350 (36.88%)	42 (44.68%)
Hispanic	106 (33.87%)	19 (32.76%)	383 (40.36%)	39 (41.49%)
Other	47 (12.02%)	5 (8.62%)	139 (14.65%)	3 (3.19%)***
COVID-19 Severity Score	3.32±2.02	4.40±1.79	3.36±2.06^	4.74±2.05***, ^^
<b>Comorbidities (at admission)</b>				
Hypertension	151 (48.24%)	31 (53.45%)	456 (48.05%)	54 (57.45%)*
COPD/Asthma	35 (11.18%)	6 (10.34%)	128 (13.49%)	17 (18.09%)
Diabetes	100 (31.95%)	21 (36.21%)	298 (31.40%)	39 (41.49%)*
Congestive heart failure	38 (12.14%)	11 (18.97%)	83 (8.75%)	31 (32.98%)***, ^
Chronic kidney disease	75 (23.96%)	14 (24.14%)	185 (19.49%)	36 (38.30%)***
<b>Discharge Disposition</b>				
Home	173 (55.27%)	17 (29.31%)***	686 (72.29%)^^	38 (40.43%)***
Acute Rehab	33 (10.54%)	7 (12.07%)	36 (3.79%)^^	4 (4.26%)
SNF	96 (30.67%)	32 (55.17%)***	203 (21.39%)^^	39 (41.49%)***
Hospice	2 (0.64%)	2 (3.45%)	1 (0.11%)	4 (4.26%)***
Other	9 (2.88%)	0 (0.00%)	23 (2.42%)	9 (9.57%)***

624

(B)	OR	95% CI	p-val
Belonging to Neurological Cohort	1.802	(1.237, 2.608)	<b>0.002</b>
Discharge disposition	1.508	(1.276, 1.775)	<b>&lt;0.0001</b>
Congestive heart failure	2.281	(1.429, 3.593)	<b>0.0004</b>
COVID-19 Severity Score	1.177	(1.062, 1.304)	<b>0.002</b>
Age	1.027	(1.010, 1.044)	<b>0.002</b>
Male	1.387	(0.963, 2.004)	0.080
Chronic kidney disease	1.321	(0.849, 2.039)	0.213
Diabetes	1.131	(0.744, 1.710)	0.561
COPD/Asthma	1.130	(0.651, 1.892)	0.652
Hypertension	0.985	(0.649, 1.492)	0.942

626 **Table 4.** Imaging findings pre, during, and post-COVID-19 infection. The neurological cohort had pre-  
 627 and post-COVID-19 imaging at 456±729 days and 335±274 days before and after hospitalization,  
 628 respectively. The control cohort had pre- and post-COVID-19 imaging at 828±974 and 432±300 days  
 629 before and after hospitalization, respectively. Patients who died during COVID-19 hospitalization are  
 630 excluded. Studies were scored as 0 (normal or no abnormality), 1 (mild abnormality), 2 (moderate  
 631 abnormality), and 3 (severe abnormality).

	Pre COVID-19			During COVID-19			Post COVID-19		
	Neurological	Control	p-val	Neurological	Control	p-val	Neurological	Control	p-val
Total Patients	94	143		65	32		144	251	
MRI	21 (22.34%)	32 (22.38%)	1.000	6 (9.23%)	6 (18.75%)	0.312	32 (21.92%)	67 (26.69%)	0.386
CT	73 (77.66%)	111 (77.62%)	1.000	59 (90.77%)	26 (81.25%)	0.312	112 (76.71%)	184 (73.31%)	0.386
<b>Qualitative Findings</b>									
Hemorrhage	4 (4.26%)	3 (2.10%)	0.570	5 (7.69%)	0 (0%)	0.262	7 (4.86%)	7 (2.79%)	0.430
Active Stroke	6 (6.38%)	7 (4.90%)	0.841	7 (10.77%)	2 (6.25%)	0.727	11 (7.64%)	12 (4.78%)	0.345
Prior Stroke	35 (37.23%)	43 (30.07%)	0.314	23 (35.38%)	11 (34.38%)	1.000	58 (40.28%)	76 (30.28%)	0.056
Mass Effect	2 (2.13%)	7 (4.90%)	0.457	6 (9.23%)	2 (6.25%)	0.913	10 (6.94%)	14 (5.58%)	0.743
Microhemorrhage	5 (5.32%)	8 (5.59%)	1.000	5 (4.62%)	0 (0%)	0.262	9 (6.25%)	17 (6.77%)	1.000
<b>Scoring Findings</b>									
White Matter Change	0.99±0.81	0.93±0.75	0.572	0.97±0.78	1.13±0.89	0.411	1.06±0.86	1.05±0.84	0.942
0	27 (28.72%)	41 (28.67%)	1.000	18 (27.69%)	7 (21.88%)	0.712	39 (27.08%)	66 (26.69%)	0.958
1	45 (47.87%)	76 (53.15%)	0.508	34 (52.31%)	18 (56.25%)	0.881	67 (46.53%)	122 (48.61%)	0.769
2	18 (19.15%)	21 (14.69%)	0.467	10 (15.38%)	3 (9.38%)	0.617	28 (19.44%)	47 (18.73%)	0.966
3	4 (4.26%)	5 (3.50%)	1.000	3 (4.62%)	4 (12.50%)	0.320	10 (6.94%)	16 (6.37%)	0.993
Microvascular Disease	0.95±0.78	0.89±0.75	0.566	0.94±0.80	1.16±0.87	0.246	1.05±0.84	1.04±0.83	0.922
0	28 (29.79%)	45 (31.47%)	0.896	20 (30.77%)	6 (18.75%)	0.311	39 (27.08%)	67 (26.69%)	1.000
1	46 (48.94%)	73 (51.05%)	0.853	32 (49.23%)	19 (59.38%)	0.469	68 (47.22%)	123 (49.00%)	0.813
2	17 (18.09%)	21 (14.69%)	0.605	10 (15.38%)	3 (9.38%)	0.617	28 (19.44%)	46 (18.33%)	0.889
3	3 (3.19%)	4 (2.80%)	1.000	3 (4.62%)	4 (12.50%)	0.320	9 (6.25%)	15 (5.98%)	1.000
Volume Loss	0.55±0.68	0.48±0.59	0.412	0.63±0.67	0.66±0.77	0.876	0.72±0.71	0.57±0.69	<b>0.045</b>
0	51 (54.26%)	81 (56.64%)	0.819	31 (47.69%)	16 (50.00%)	1.000	61 (42.36%)	135 (53.78%)	<b>0.037</b>
1	35 (37.23%)	55 (38.46%)	0.957	27 (41.54%)	12 (37.50%)	0.872	63 (43.75%)	89 (35.46%)	0.128
2	7 (7.45%)	7 (4.90%)	0.594	7 (10.77%)	3 (9.38%)	1.000	19 (13.19%)	26 (10.36%)	0.491
3	1 (1.06%)	0 (0%)	0.832	0 (0%)	1 (3.13%)	0.716	1 (0.69%)	1 (0.40%)	1.000
White Matter Hyperintensity/Lesion	0.62±0.50	0.38±0.28	0.338	1±0.38	0.33±0.24	0.645	0.41±0.39	0.49±0.43	0.333
0	13 (13.83%)	20 (13.99%)	1.000	2 (3.08%)	4 (12.50%)	0.173	23 (15.97%)	41 (16.33%)	1.000
1	4 (4.26%)	12 (8.39%)	0.329	2 (3.08%)	2 (6.25%)	0.845	6 (4.17%)	21 (8.37%)	0.166
2	3 (3.19%)	0 (0%)	0.120	2 (3.08%)	0 (0%)	0.808	2 (1.39%)	3 (1.20%)	1.000
3	1 (1.06%)	0 (0%)	0.832	0 (0%)	0 (0%)	NA	1 (0.69%)	2 (0.80%)	1.000

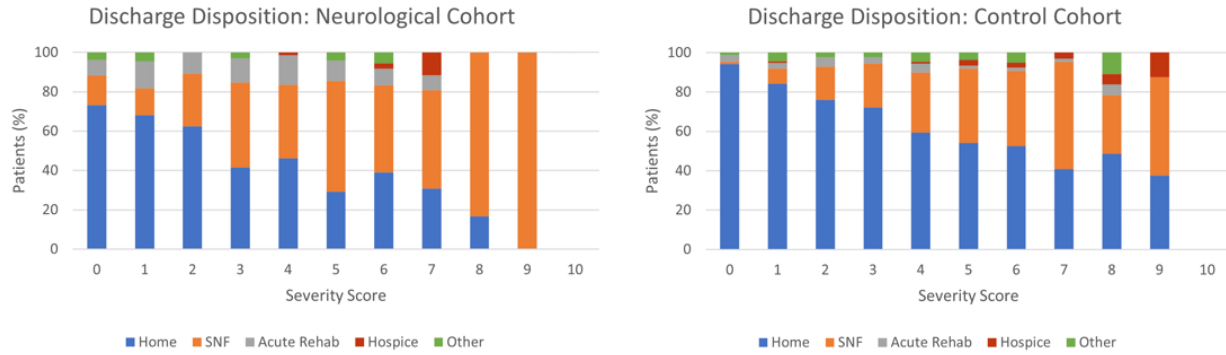
632

633 **Table 4B.** Changes in imaging findings between baseline (pre or during COVID-19 hospitalization) and  
 634 follow-up (post-COVID-19 hospitalization). Only patients with both a baseline and follow-up scan were  
 635 included. Studies were scored as 0 (normal or no abnormality), 1 (mild abnormality), 2 (moderate  
 636 abnormality), and 3 (severe abnormality).

	Neurological (N=112)		Control (N=157)		p-val (neurological vs control)
		p-val		p-val	
<b>Changes in incidence for</b>					
Hemorrhage	3 (2.68%)	0.245	3 (1.91%)	0.246	0.999
Active Stroke	7 (6.25%)	<b>0.021</b>	6 (3.82%)	<b>0.039</b>	0.531
Prior Stroke	14	<b>0.0003</b>	15 (9.55%)	<b>0.0002</b>	0.570
Mass Effect	5 (4.46%)	0.070	4 (2.55%)	0.131	0.605
Microhemorrhage	8 (7.14%)	<b>0.012</b>	10 (6.37%)	<b>0.004</b>	0.998
<b>Changes in scores for</b>					
White Matter Change	0.12±0.44	<b>0.006</b>	0.18±0.46	<b>&lt;0.0001</b>	0.219
Microvascular Disease	0.15±0.41	<b>0.0001</b>	0.18±0.46	<b>&lt;0.0001</b>	0.538
Volume Loss	0.15±0.41	<b>0.0001</b>	0.17±0.42	<b>&lt;0.0001</b>	0.787
White Matter Hyperintensity/Lesion	-0.04±0.63	0.459	0.03±0.42	0.452	0.310

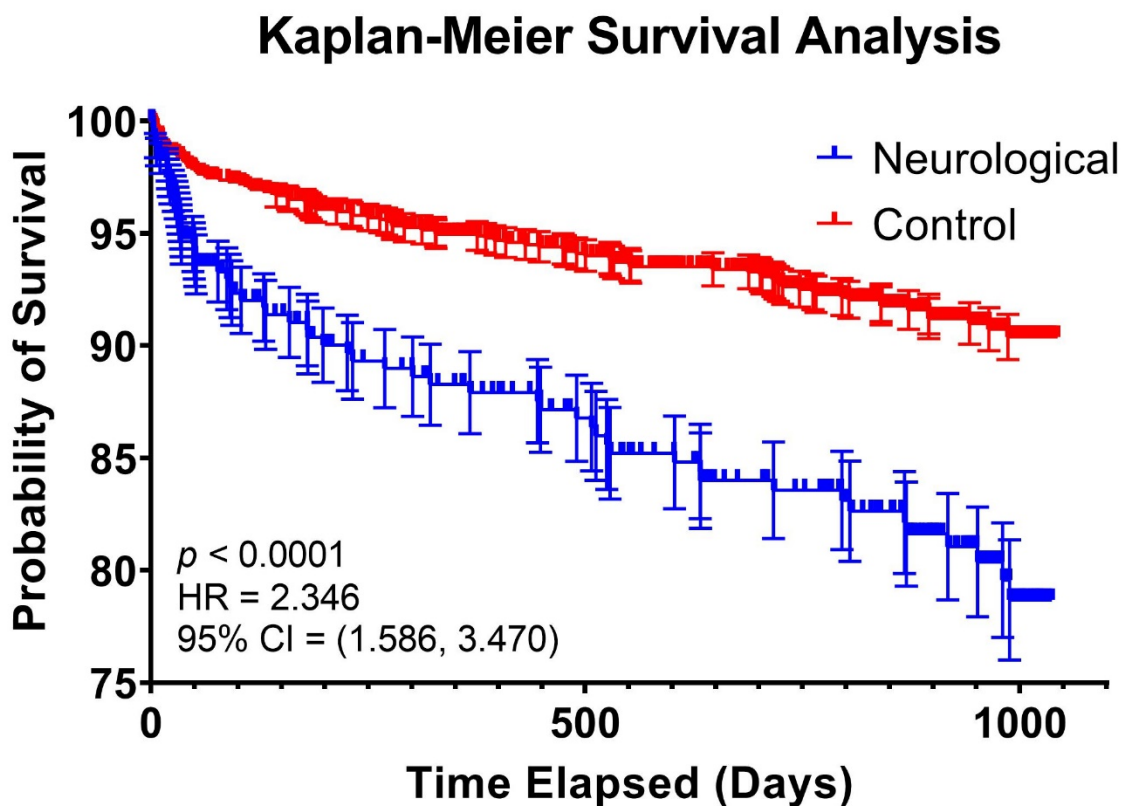
637

638 **Figure 1.** Percent of patients in the neurological and control cohorts discharged to home, acute  
639 rehabilitation, skilled nursing facility (SNF), hospice, and others for different COVID-19 severity score.  
640



641

643 **Figure 2.** Kaplan-Meier Survival Curve analyzing the probability of survival after discharge from  
644 COVID-19 hospitalization in the neurological cohort versus the control cohort. HR = 2.346, 95%  
645 CI=(1.586, 3.470), p-value<0.0001.



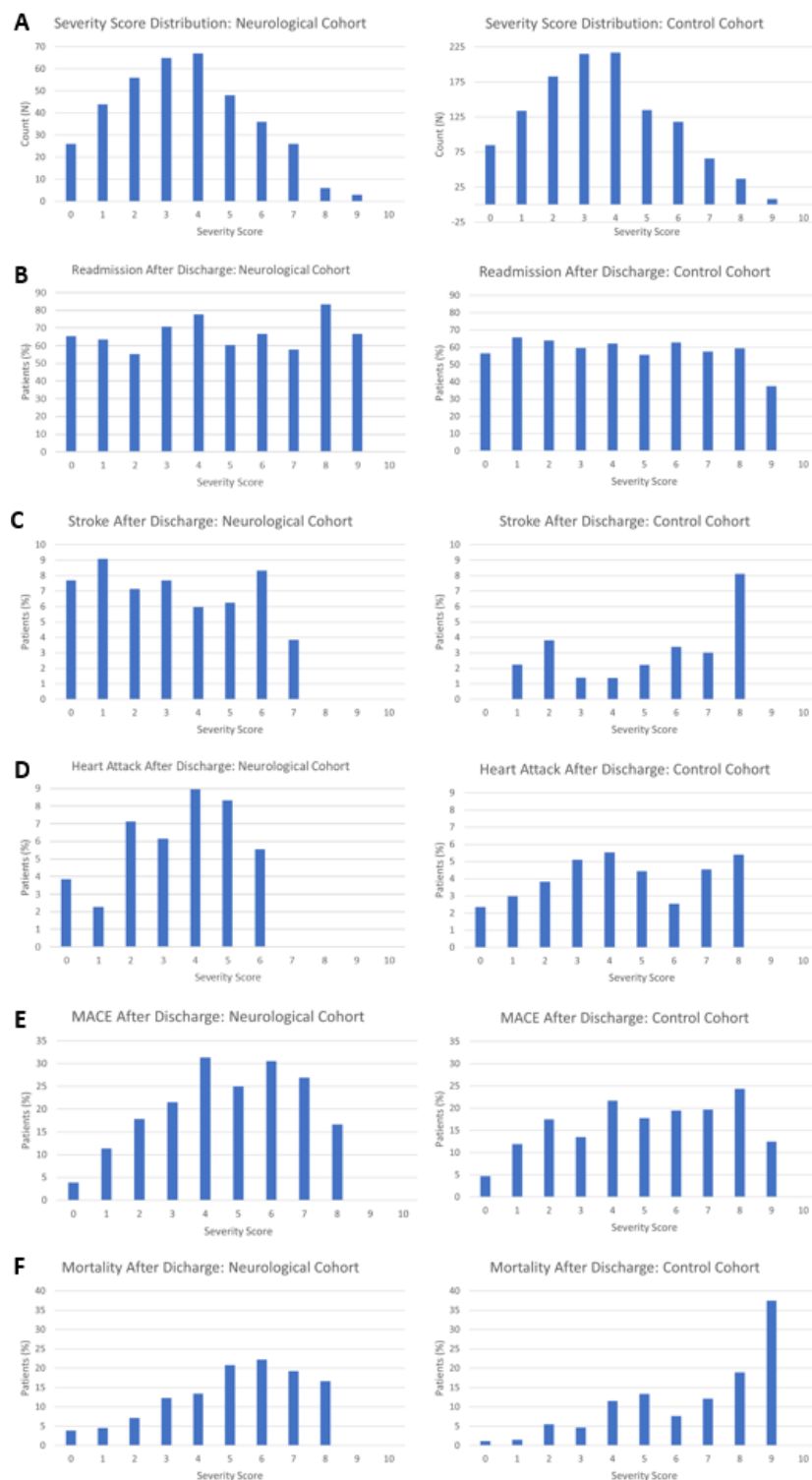
646

648 **Supplemental Table 1.** Laboratory values of neurological and control patients at COVID-19  
 649 hospitalization admission and most recent follow-up. Mean±SD or n (%). \* p<0.05, \*\* p<0.01, \*\*\*  
 650 p<0.001 between the neurological and control cohorts. ^ p<0.05, ^^ p<0.01, ^^ p<0.001 between  
 651 admission and follow-up lab values within the same cohort.  
 652

Lab Values	Neurologic Cohort (N=414)		Control Cohort (N=1199)	
	Admission	Follow-Up	Admission	Follow-Up
Temperature [°F]	98.86±1.22^^^	98.22±0.74	99.05±1.33^^^**	98.11±2.05
SBP [mmHg]	133.64±27.46^^^	124.19±24.44	135.09±25.25^^^	127.24±22.49*
Mean arterial pressure [mmHg]	122.38±83.16	116.77±61.21	103.33±65.24^^^***	111.56±63.52
DDIM [ug/mL FEU]	4.27±5.57^^^	3.17±4.42	3.46±4.84**	3.05±14.05
INR [seconds]	15.75±7.00	15.48±4.48	15.32±6.82	15.38±4.99
BUN [mg/dL]	35.35±35.08^^^	26.26±24.06	29.94±28.38^^^**	22.64±20.52**
Cr [mg/dL]	2.15±2.74^	1.79±2.27	1.90±2.43^^^	1.57±1.90*
Sodium	138.58±8.07	139.18±4.85	137.75±7.48^^^	139.10±4.30
Glucose [mg/dL]	190.21±179.35^^^	136.47±74.92	172.68±135.56^^^*	130.12±62.67
AST [U/L]	48.76±53.08	61.20±257.39	56.87±105.55*	52.89±361.85
ALT [U/L]	33.8544.55	51.74±267.41	38.82±71.60*	36.96±102.81
WBC [k/uL]	8.13±4.67	7.95±3.99	8.47±7.31^^	7.91±3.66
Lymph [k/uL]	1.16±0.76^^^	1.67±0.93	1.38±4.94^^	1.74±1.09
FERR [ng/mL]	1251.76±1550.73^	964.16±2385.43	1261.31±2092.20^^^	948.88±1532.12
CRP [mg/L]	9.61±9.33^^^	5.91±6.94	11.10±9.66^^^**	5.54±6.27
Procalcitonin [ug/L]	1.99±6.17	2.23±7.15	1.25±4.82*	1.43±6.10*
LDH [U/L]	411.72±300.88^^^	345.73±156.67	404.41±231.39^^^	341.15±267.74
BNP [pg/mL]	2519.11±4491.13^^^	1642.03±3577.47	1825.85±3716.69^^^*.*	1242.17±2948.39*
TNT [ug/L]	0.06±0.19^	0.26±2.13	0.04±0.09^^^*	0.18±1.53
Pulse Oximetry [% Oxygenation]	95.20±5.51^^^	97.10±6.31	93.80±7.15^^^***	97.12±5.56

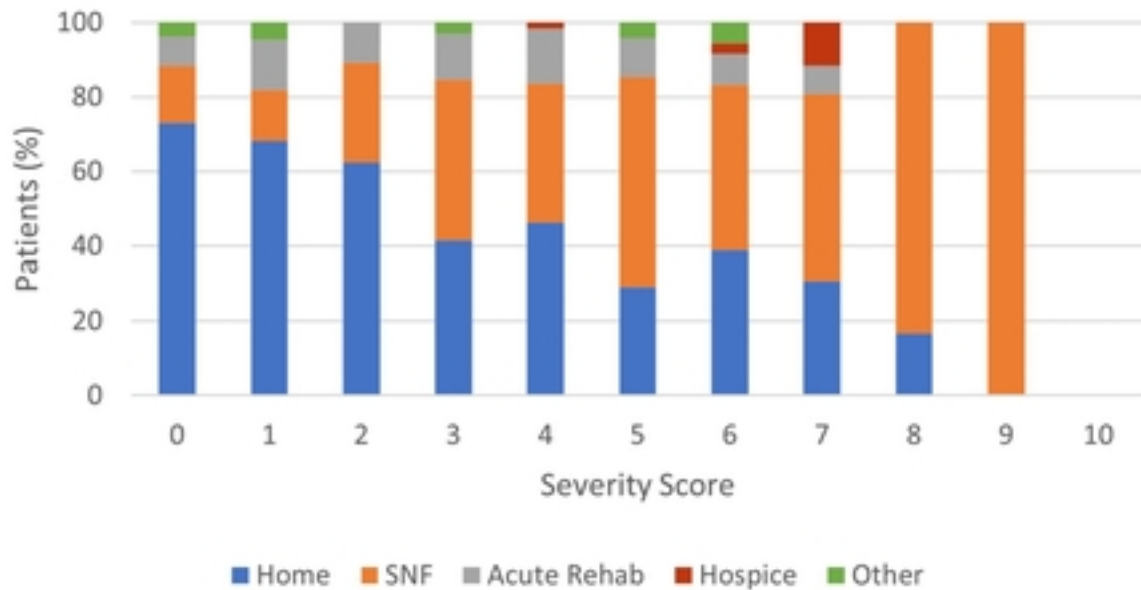
653

654 **Supplemental Figure 1.** (A) Distribution of COVID-19 severity score in the neurological and control  
 655 cohorts (survivors after COVID-19 hospitalization discharge). Percent of patients in the neurological and  
 656 control cohorts who (B) were readmitted, (C) had stroke, (D) had heart attack, (E) had MACE, and (F)  
 657 died after discharge from COVID-19 hospitalization.



658

Discharge Disposition: Neurological Cohort



Discharge Disposition: Control Cohort

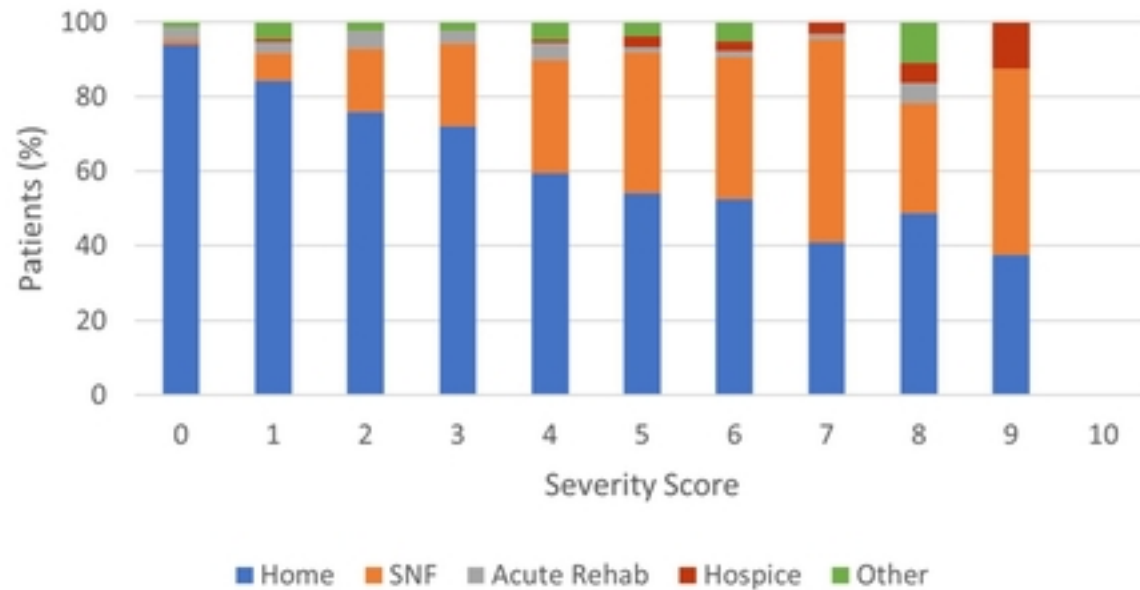


Figure 1



# Kaplan-Meier Survival Analysis

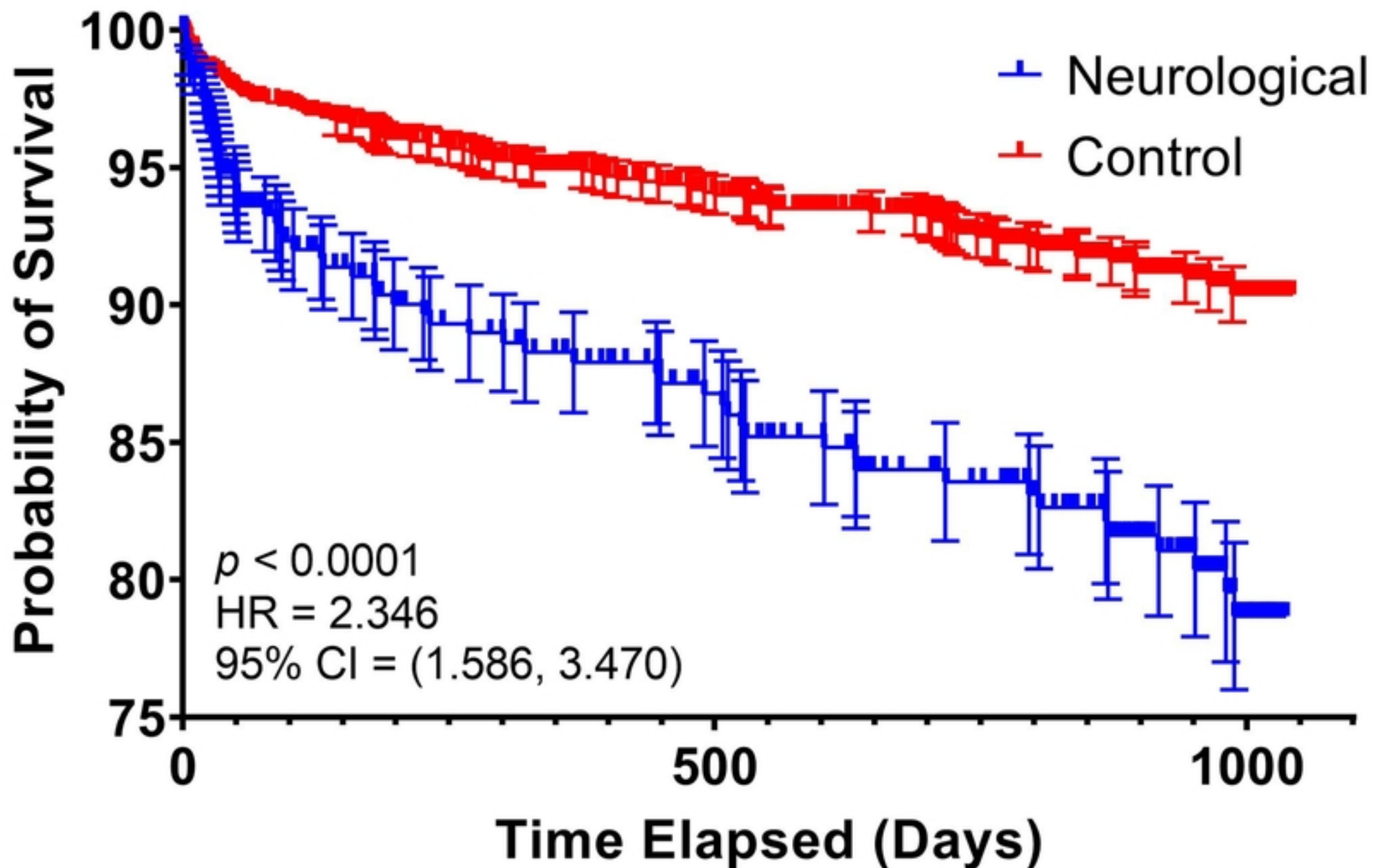
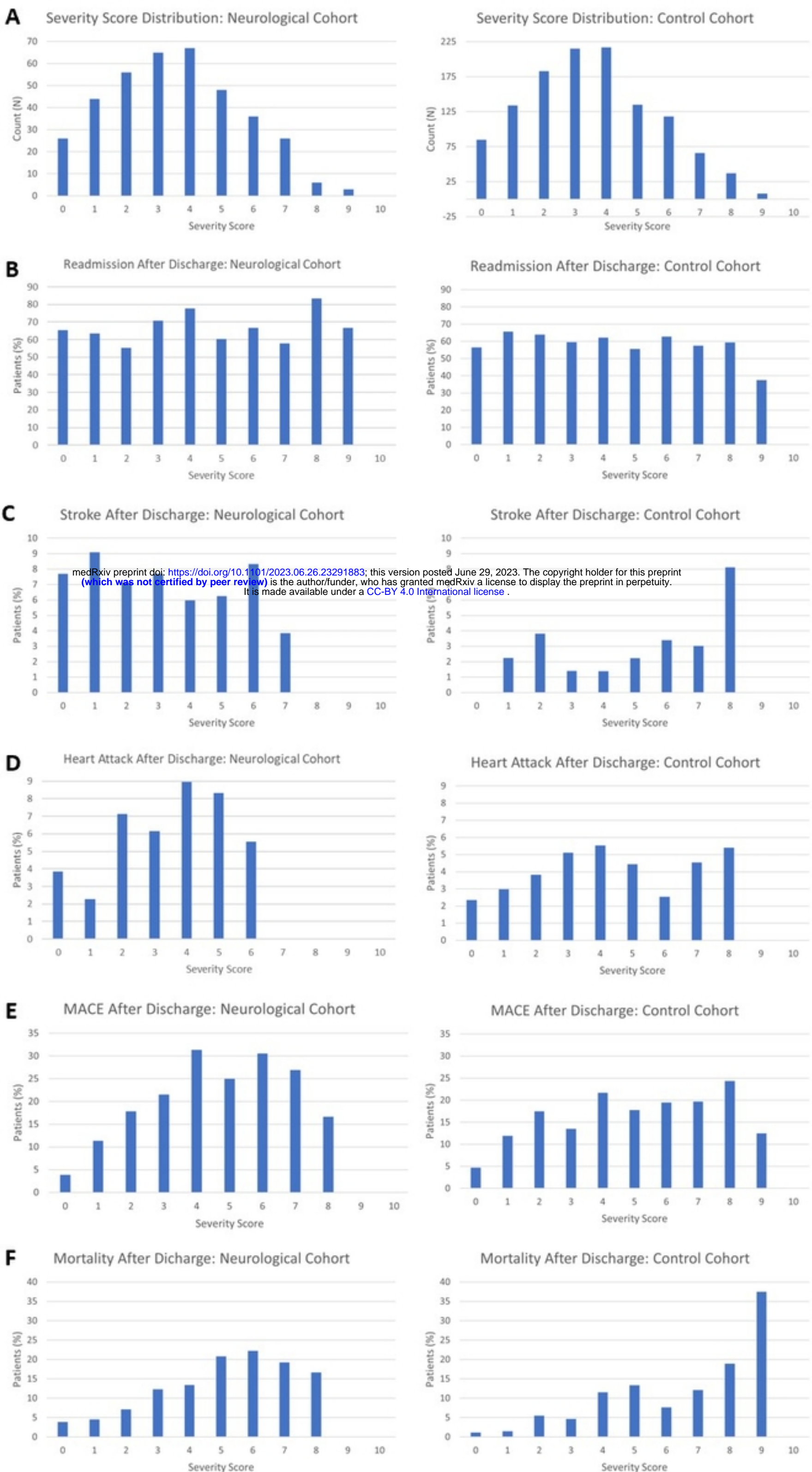


Figure 2



Supplemental Figure 1