

1 **Saliva as an alternative sample type for detection of pneumococcal carriage in young children**

2

3 Anne L. Wyllie^{1,2#}, Nynke Y. Rots³, Alienke J. Wijmenga-Monsuur³, Marlies A. van Houten⁴, Elisabeth
4 A.M. Sanders^{1,3}, and Krzysztof Trzciński^{1*}

5

6 ¹Paediatric Immunology and Infectious Diseases, Wilhelmina Children's Hospital, University Medical
7 Center Utrecht, Utrecht, the Netherlands; ²Epidemiology of Microbial Diseases, Yale School of Public
8 Health, New Haven, Connecticut, USA; ³Centre for Infectious Disease Control, National Institute for
9 Public Health and the Environment (RIVM), Bilthoven, the Netherlands; ⁴Spaarne Gasthuis Academie,
10 Spaarne Gasthuis, Hoofddorp, the Netherlands.

11

12 [#]corresponding author

13 Yale School of Public Health

14 60 College St

15 New Haven

16 CT 06511

17 USA

18 Phone: +1-203-781-6942

19 e-mail: anne.wyllie@yale.edu

20

21 **Keywords:** *Streptococcus pneumoniae*, streptococci, carriage, diagnostic detection, saliva

22

23

24 **ABSTRACT (267 words)**

25 In children, the gold standard for the detection of pneumococcal carriage is conventional culture of a
26 nasopharyngeal swab. Saliva, however, has a history as one of the most sensitive methods for
27 surveillances on pneumococcal colonisation and has recently been shown to improve carriage
28 detection in older age groups. Here, we compared the sensitivity of nasopharyngeal and saliva
29 samples from PCV7-vaccinated 24-month-old children for pneumococcal carriage detection using
30 conventional and molecular diagnostic methods.

31

32 Nasopharyngeal and saliva samples were collected from 288 24-month-old children during the
33 autumn/winter, 2012/2013. All samples were first processed by conventional diagnostic techniques.

34 Next, DNA extracted from all plate growth was tested by qPCR for the presence of pneumococcal
35 genes *piaB* and *lytA* and a subset of serotypes.

36

37 By culture, 164/288 (57%) nasopharyngeal swabs tested positive for pneumococcus, but detection
38 was not possible from saliva due to abundant polymicrobial growth on culture-plates. Molecular
39 methods increased the number of children pneumococci-positive to 172/288 (60%) when testing
40 culture-enriched saliva and to 212/288 (73%) when testing nasopharyngeal samples. Altogether, by
41 molecular methods 239/288 (83%) infants were positive, with qPCR-based carriage detection of
42 culture-enriched nasopharyngeal swabs significantly detecting more carriers compared to either
43 conventional culture ($p<0.001$) or qPCR-detection of saliva ($p<0.001$). However, 27/240 (11%)
44 carriers were positive only in saliva, significantly contributing to the overall number of carriers
45 detected ($p<0.01$).

46

47 While testing nasopharyngeal swabs with qPCR proved most sensitive for pneumococcal detection in
48 infants, saliva sampling could be considered as complementary to provide additional information on
49 carriage and serotypes which may not be detected in the nasopharynx and may be particularly useful
50 in longitudinal studies, requiring repeated sampling events.

51

52 **INTRODUCTION (399 words, total 2,011)**

53 The human nasopharynx is considered the primary niche of *Streptococcus pneumoniae*, with
54 colonisation occasionally progressing to pneumococcal disease. Disease manifestations include
55 respiratory infections such as otitis media or pneumonia, or invasive pneumococcal disease (IPD)
56 such as bacteraemia or sepsis with or without meningitis¹. Current vaccination strategies are targeted
57 towards the polysaccharide capsule, which is considered the primary pneumococcal virulence factor².
58 With over 100 known capsular types (serotypes)³, current vaccination coverage is limited to either a
59 maximum of 20 serotypes included in the conjugated polysaccharide vaccines (PCVs) or 23
60 serotypes for the polysaccharide vaccine (PPSV23). PCV-vaccination of children (the key transmitters
61 of pneumococcus) not only protects against vaccine-serotype (VT) disease, but also against carriage
62 of VT strains. Moreover, PCVs lead to herd protection in other age groups, most importantly, by
63 reducing VT-disease in older adults^{1,4-12}. However, the gap left after VT-eradication from carriage in
64 children has been almost completely filled by emerging non-vaccine serotypes (NVTs)¹²⁻¹⁴. This
65 serotype replacement¹⁰, is eroding the benefits of vaccination to various extents across all age
66 groups, especially in older adults with increasing serotype replacement in diseases like pneumonia
67 and IPD^{6,15,16}.

68

69 For any strategy aiming to prevent pneumococcal disease, knowledge on pneumococcus reservoirs in
70 the population is essential and surveillance of carriage can provide data on vaccine effects before any
71 impact can be observed in disease¹⁷. Pneumococcal carriage detection has been instrumental in
72 monitoring the impact of vaccination against pneumococcal disease. The gold standard method for
73 carriage detection is conventional culture of a nasopharyngeal swab with an additional oropharyngeal
74 swab recommended to improve the sensitivity of detection in adults¹⁸. Historical records from the pre-
75 antibiotic era however, reported high carriage rates ranging between 39% and 54% across all ages,
76 when oral (saliva) samples were tested with sensitive animal inoculation method¹⁹⁻²¹. This suggested
77 to us that sampling of the oral niche might increase carriage detection²². In line with this, we and
78 others have demonstrated the potential of molecular methods for increased pneumococcal detection
79 in older age groups when oropharyngeal swabs²³⁻²⁶ or saliva samples were tested alongside
80 nasopharyngeal swabs^{22,23}.

81

82 Since young children are typically the focus of surveillance on pneumococcal carriage prior to or
83 following updated vaccination strategies, we explored the sensitivity of culture and molecular methods
84 for pneumococcal carriage detection in nasopharyngeal swabs and saliva samples collected from 24-
85 month-olds to investigate whether nasopharyngeal sampling was also under detecting carriage
86 prevalence in this population.

87

88 **METHODS AND MATERIALS**

89 **Study design.** Nasopharyngeal swabs were collected in a prospective cross-sectional study
90 conducted in the Netherlands during the autumn/winter season of 2012/2013 from 330 PCV7-
91 vaccinated 24-month-old children^{14,27}. Detailed descriptions of the study population and primary
92 results for pneumococcal carriage detection in these nasopharyngeal samples were reported on
93 previously^{14,27} and in the current study, were analysed together with saliva samples which were also
94 collected, as described below.

95

96 The study was approved by METC Noord-Holland (NL40288.094.12)¹⁴ and conducted in accordance
97 with the European Statements for Good Clinical Practice and the declaration of Helsinki of the World
98 Health Medical Association. Written informed consent was obtained from all parents.

99

100 **Collection of saliva samples.** At time of nasopharyngeal sample collection¹⁴, a saliva sample was
101 also collected from each PCV7-vaccinated 24-month-old child. Prior to sample collection, informed
102 consent was obtained from both parents/caregivers, with saliva collection also approved by METC
103 Noord-Holland (NL40288.094.12)¹⁴. Briefly, a saliva collection sponge (Oracol®, Malvern Medical
104 Developments, Worcester, United Kingdom) was placed in the front part of the child's mouth for
105 approximately one minute until saturated with saliva²⁸. The wet sponge was then placed into a 5 ml
106 syringe and the stick was withdrawn through the narrow opening, leaving only the sponge inside the
107 syringe. Using the plunger, the sponge was compressed, and the saliva was transferred to 2 ml
108 cryovials prefilled with 0.1 ml of 50% glycerol water solution. Samples were transported to the
109 diagnostic lab on dry ice, stored at -80°C, thawed in batches and 100 µl of saliva cultured on
110 Columbia agar with 7% defibrinated sheep blood and gentamicin 5 mg/l, the medium selective for
111 pneumococcus, as previously described^{14,23}. All bacterial growth was harvested from all culture-plates

112 into Brain Heart Infusion Broth (Oxoid, Badhoevedorp, the Netherlands) supplemented with 10%
113 glycerol and stored frozen at -80°C^{22} . These samples were considered culture-enriched for
114 pneumococcus. Later, DNA was extracted from 200 μl of culture-enriched saliva samples as
115 previously described²².

116

117 **Pneumococcal carriage and serotype detection.** DNA templates from culture-enriched saliva were
118 first tested for the presence of two pneumococcal-specific genes *piaB*^{24,27} and *lytA*²⁹. Samples were
119 classified as positive for pneumococcus when C_T values for both targeted genes were $<40^{22,23,25,26}$.

120

121 Regardless of outcome of *piaB* and *lytA* qPCR-testing, all saliva samples from children were tested in
122 qPCR for the presence of sequences specific for pneumococcal serotypes/serogroups 1, 3, 6A/B/C/D,
123 7A/F, 8, 9A/N/V, 10A/B, 12A/B/F, 14, 15A/B/C, 19A, 20, 23F, 33A/F/37³⁰, 11A/D, 16F, 18B/C and
124 19F³¹. Samples were classified as positive for pneumococcal serotype/serogroup when C_T values for
125 targeted genes were <40 .

126

127 **Statistics.** Statistical analyses were conducted using GraphPad Prism v5.0 (GraphPad Software, San
128 Diego, CA, USA). Differences in pneumococcal serotype carriage and serotype detection were tested
129 for using two-way Fisher's exact tests for 2×2 , or Chi-square for 3×2 contingency tables. An estimate
130 was considered statistically significant at $p < 0.05$.

131

132 **RESULTS**

133 From the 293 24-month-old children previously reported on²⁷ for pneumococcal carriage detection in
134 their nasopharyngeal samples, 288 (98%) matching saliva samples were available for inclusion in the
135 current study. Results summarised in Table 1 depict differences in pneumococcal carriage detection
136 between the two sample types and diagnostic methods (culture vs. molecular). Here, we report on the
137 sensitivity of each method, defined as the number of carriage events detected by each method, over
138 the total number of carriage events detected by all methods combined.

139

140 **Pneumococcal carriage detected by culture**

141 Overall, culture-detected carriage rates were in line with contemporary rates reported by others^{14,32,33},
142 with a relatively high sensitivity of nasopharyngeal carriage detection (0.74). Isolation of live
143 pneumococci from saliva at the initial culture step was virtually impossible due to abundant
144 polymicrobial growth on plates selective for pneumococcus^{22,23}, thus the sensitivity of pneumococcal
145 carriage detection by culturing saliva at the primary diagnostic step was null.

146

147 **Pneumococcal carriage detected in culture-enriched samples by qPCR**

148 Testing culture-enriched samples with qPCR significantly increased pneumococcal detection as
149 compared with culture detection. Testing culture-enriched nasopharyngeal samples by the molecular
150 method was the most sensitive method of carriage detection (0.85) and identified significantly more
151 carriers than testing culture-enriched saliva samples with qPCR (187/288, 65% versus 155/288, 54%;
152 $p<0.001$). Nonetheless, saliva significantly contributed to the overall carriage rate detected compared
153 to testing nasopharyngeal swabs alone (219 versus 187, $p<0.005$). Importantly, there was no
154 difference between the prevalence of carriage detected by testing saliva by qPCR compared with the
155 gold standard culture of nasopharyngeal swabs (155 versus 161, $p=0.68$).

156

157 Overall, 219/288 (76%) children were positive for pneumococcus when results of all methods applied
158 were combined.

159

160 **Effect of sample type and testing method on pneumococcal serotype detection**

161 Since we report here for the first time on pneumococcal carriage detection using saliva of children, we
162 compared this data to the previously described nasopharyngeal serotype carriage data²⁷, detected by
163 either the recommended culture-based approach or by testing culture-enriched nasopharyngeal
164 samples using molecular methods (Table S1).

165

166 As compared to culture-based pneumococcal detection in nasopharyngeal samples, application of
167 molecular methods to saliva detected significantly more carriers of serotypes 11A/D (19/161, 12%
168 versus 33/155, 21%; $p=0.033$), 19A (25/161, 16% versus 39/155, 25%; $p=0.036$) and PCV13-VTs
169 overall (35/161, 22% versus 50/155, 32%; $p=0.042$) (Figure 1A). However, when both sample types
170 were tested by qPCR, there were no differences in the carriage frequencies of serotypes between

171 nasopharyngeal or saliva samples (Figure 1B). Moreover, there was a strong correlation between the
172 frequency of a serotype detected in nasopharyngeal samples by culture and its frequency of detection
173 in saliva by qPCR ($\rho=0.845$; $p<0.001$), which was even stronger when results of carriage detection
174 with molecular methods for nasopharyngeal and saliva samples were compared ($\rho=0.849$,
175 $p<0.0001$).

176

177 With similar rates of overall pneumococcal carriage detection in both nasopharyngeal and saliva
178 samples collected from children, we were interested in the benefit of each sample type for its
179 contribution to serotype detection. Therefore, to investigate the additive effect of samples obtained
180 from different niches on serotype detection in children, we re-analysed the serotyping data, excluding
181 children who were positive for the same serotype in both niches. As compared to culture detection in
182 nasopharyngeal samples, testing saliva with qPCR detected significantly higher carriage of serotypes
183 16F (0/161, 0% versus 5/155, 3%; $p=0.027$) and 19A (5/161, 3% versus 16/155, 29%; $p=0.012$;
184 respectively) (Figure 2A). When both sample types were tested by qPCR, there were no significant
185 differences in additional serotypes detected by either sample type (Figure 2B).

186

187 **DISCUSSION**

188 The current culture-based recommendation for detecting pneumococcal carriage is becoming more
189 frequently challenged^{18,23–25,34–36}. While culture-independent methods improve the sensitivity of
190 carriage detection in nasopharyngeal samples from both children^{30,37,38} and adults^{23–26,39}, we have
191 also demonstrated improved sensitivity when these methods are applied to alternative respiratory
192 samples from adults^{23–25}. Therefore, in the current study, we conducted a direct comparison of
193 nasopharyngeal swab and saliva samples collected from 24-month-old children, for their sensitivity for
194 pneumococcal detection when processed by culture and molecular methods; nasopharyngeal
195 sampling proved superior in children.

196

197 While nasopharyngeal swabs were optimal for overall detection of pneumococcal carriage in children,
198 saliva significantly contributed to the overall carriage rate (219 total carriers detected versus 187
199 carriers detected by nasopharyngeal swabs alone, $p<0.005$, and 155 by saliva alone). For serotype
200 carriage detection however, neither nasopharyngeal nor saliva samples were superior when all

201 samples were processed by the molecular method. This suggests to us that results for serotype
202 distribution generated using saliva are equally representative to results generated with the current
203 gold standard method of conventional culture of nasopharyngeal swabs in children. It should be noted
204 that culture-enrichment can enhance carriage detection in low density carriers or of secondary (or
205 lesser) serotypes co-carried in a sample when serotype surveillance is being considered. The
206 differences between serotypes detected in saliva compared to serotypes cultured from
207 nasopharyngeal swabs were likely due to failure of colony picking during culture to detect co-carriage
208 of less abundant strain(s)⁴⁰. Importantly, overall serotype detection in saliva samples correlated well
209 with qPCR-detection in nasopharyngeal swabs. Hence, molecular testing of saliva samples holds
210 potential for improving surveillance of pneumococcal carriage, providing additional insight into
211 pneumococcal carriage compared to sampling the nasopharynx alone or providing a means to reduce
212 the burden of study protocols through simplified sample collection. Additionally, with little-to-no
213 discomfort from non-intrusive collection, saliva sampling is generally better tolerated compared to
214 nasopharyngeal swabbing encouraging greater adherence to sampling routines²³, while reducing the
215 number of participants or samples lost due to testing aversion and refusing of sample collection²³.
216 This makes saliva particularly suitable for longitudinal studies.

217

218 The vast majority of epidemiological surveillance studies of pneumococcal carriage are descriptive,
219 based on qualitative results of carriage detection and focus on serotype distribution. They are usually
220 solely aimed at monitoring the disappearance of VTs and the emergence of NVTs. Future vaccines
221 may transcend pneumococcal serotypes, with vaccines protecting against all pneumococci,
222 independent of capsular polysaccharide expressed. In this instance, while determining serotype-
223 specific carriage may be only a secondary interest, accurate measures of overall pneumococcus in its
224 ecological niche (the presence and density of all serotypes combined) will remain essential for
225 monitoring vaccine effects and establishing study endpoints. More complex studies, with repeated
226 sampling events, are required for better understanding of carriage dynamics (rates of acquisition and
227 clearance, episode length) in both carriage and disease and in children versus adult populations.

228

229 With the increasing availability of more sensitive detection methods, it is again being reported that as
230 in the early studies, pneumococcal carriage can be long-lasting, and that co-carriage of multiple

231 serotypes is common. Longitudinal carriage of serotypes increases the risk of transmission, but also
232 provides opportunities for intra- and inter-species genetic recombination. While findings from this and
233 previous studies suggest to us that no single sample type should be considered as universally
234 superior for pneumococcal carriage detection across all age groups, collecting saliva from children –
235 whether alone or in addition to nasopharyngeal swabs - could be considered as a quick, non-invasive
236 option for enhanced detection with greater serotype carriage. If strain isolation is not of critical
237 importance, the two sample types could be merged and tested as one. Moreover, sampling saliva
238 may have an even greater benefit in broader studies for its potential to also be tested for other upper
239 respiratory tract commensals or pathogens, such as meningococci^{41,42}, as well as for antibody
240 responses.

241

242

243 **DECLARATIONS**

244 **Conflict of Interest.** ALW has received consulting and/or advisory board fees from Pfizer, RADx,
245 Diasorin, PPS Health, Co-Diagnostics, Filtration Group, and Global Diagnostic Systems for work
246 unrelated to this project, and is Principal Investigator on research grants with Pfizer, Merck, Flambeau
247 Diagnostics, Tempus Labs, and The Rockefeller Foundation to Yale University. MAVH declares to
248 have received research grants from Pfizer. EAMS declares to have received research grants from
249 Pfizer and GSK and fees paid to the institution for advisory boards and participation in independent
250 data monitoring committees for Pfizer and GSK. KT declares to have received research grants from
251 Pfizer and GSK and fees for advisory boards for Pfizer, all paid to the home institution. All other
252 authors report no potential conflicts.

253

254 **Funding.** The work was funded by the Dutch Ministry of Health. Unrestricted grant support for
255 molecular microbiology was provided by Pfizer (the Netherlands), through investigator-initiated
256 research grants (WS2312079 and WS2312119 to EAMS and KT).

257

258 **Acknowledgements.** We gratefully acknowledge the participating families for their time and
259 commitment to the study. We thank all members of the research team of the Spaarne Gasthuis, the
260 laboratory staff of Regional Laboratory of Public Health, Haarlem, the Netherlands and the

261 cooperating institutes for their dedication and work which made this project possible. In particular, we
262 would like to thank Astrid Bosch for assistance with sample collection and Lidewij Rümke and Jody
263 van Engelsdorp Gastelaars for laboratory assistance.

264

265 **Authors' contributions.** ALW, NR, EAMS and KT had the idea and initiated the study. AJWM, NR,
266 EAMS and KT wrote the study protocols. ALW, AJWM and MAVH managed the study and collected
267 the data. ALW was responsible for and performed the assays. ALW and KT analysed and interpreted
268 the data. ALW, EAMS and KT drafted the manuscript. All authors amended and commented on the
269 final manuscript.

270

271 REFERENCES

- 272 1. Simell, B. *et al.* The fundamental link between pneumococcal carriage and disease. *Expert review of*
273 *vaccines* **11**, 841–855 (2012).
- 274 2. Mitchell, A. M. & Mitchell, T. J. Streptococcus pneumoniae: virulence factors and variation. *Clinical*
275 *Microbiology and Infection* **16**, 411–418 (2010).
- 276 3. Ganaie, F. *et al.* A new pneumococcal capsule type, 10D, is the 100th serotype and has a large cps
277 fragment from an oral streptococcus. *MBio* **11**, (2020).
- 278 4. Whitney, C. G. *et al.* Decline in Invasive Pneumococcal Disease after the Introduction of Protein–
279 Polysaccharide Conjugate Vaccine. *New England Journal of Medicine* **348**, 1737–1746 (2003).
- 280 5. Lexau, C. A. *et al.* Changing epidemiology of invasive pneumococcal disease among older adults in
281 the era of pediatric pneumococcal conjugate vaccine. *JAMA* **294**, 2043–2051 (2005).
- 282 6. Wagenvoort, G. H. J. *et al.* Invasive pneumococcal disease: Clinical outcomes and patient
283 characteristics 2–6 years after introduction of 7-valent pneumococcal conjugate vaccine compared to
284 the pre-vaccine period, the Netherlands. *Vaccine* **34**, 1077–1085 (2016).
- 285 7. Flasche, S. *et al.* Effect of pneumococcal conjugate vaccination on serotype-specific carriage and
286 invasive disease in England: a cross-sectional study. *PLoS medicine* **8**, e1001017 (2011).
- 287 8. Reinert, R., Jacobs, M. R. & Kaplan, S. L. Pneumococcal disease caused by serotype 19A: review of
288 the literature and implications for future vaccine development. *Vaccine* **28**, 4249–4259 (2010).
- 289 9. Knol, M. J. M. J. *et al.* Invasive pneumococcal disease 3 years after introduction of 10-valent
290 pneumococcal conjugate vaccine, the Netherlands. *Emerging Infectious Diseases* **21**, 2040–2044
291 (2015).
- 292 10. Lipsitch, M. Vaccination against colonizing bacteria with multiple serotypes. *Proceedings of the*
293 *National Academy of Sciences of the United States of America* **94**, 6571–6576 (1997).
- 294 11. Zhou, J., Enright, M. C. & Spratt, B. G. Identification of the major Spanish clones of penicillin-resistant
295 pneumococci via the Internet using multilocus sequence typing. *Journal of clinical microbiology* **38**,
296 977–986 (2000).
- 297 12. Weinberger, D. M., Malley, R. & Lipsitch, M. Serotype replacement in disease after pneumococcal
298 vaccination. *Lancet* **378**, 1962–1973 (2011).

- 299 13. Hanage, W. P. *et al.* Evidence that pneumococcal serotype replacement in Massachusetts following
300 conjugate vaccination is now complete. *Epidemics* **2**, 80–84 (2010).
- 301 14. Bosch, A. A. T. M. *et al.* Nasopharyngeal carriage of *Streptococcus pneumoniae* and other bacteria in
302 the 7th year after implementation of the pneumococcal conjugate vaccine in the Netherlands. *Vaccine*
303 **34**, 1–9 (2015).
- 304 15. van Deursen, A. M. M. *et al.* Invasive pneumococcal disease and 7-valent pneumococcal conjugate
305 vaccine, the Netherlands. *Emerging infectious diseases* **18**, 1729–1737 (2012).
- 306 16. Scott, J. R. *et al.* Impact of more than a decade of pneumococcal conjugate vaccine use on carriage
307 and invasive potential in Native American communities. *J. Infect. Dis.* **205**, 280–288 (2012).
- 308 17. Weinberger, D. M. *et al.* Relating Pneumococcal Carriage Among Children to Disease Rates Among
309 Adults Before and After the Introduction of Conjugate Vaccines. *American Journal of Epidemiology*
310 **183**, 1055–1062 (2016).
- 311 18. Satzke, C. *et al.* Standard method for detecting upper respiratory carriage of *Streptococcus*
312 *pneumoniae*: Updated recommendations from the World Health Organization Pneumococcal Carriage
313 Working Group. *Vaccine* **32**, 165–179 (2013).
- 314 19. Heffron, R. Epidemiology. in *Pneumonia with special reference to pneumococcus lobar pneumonia*
315 Epidemiology 258-394 (Oxford University Press, 1939).
- 316 20. Krone, C. L., van de Groep, K., Trzciński, K., Sanders, E. A. M. & Bogaert, D. Immunosenescence and
317 pneumococcal disease: an imbalance in host–pathogen interactions. *The Lancet Respiratory Medicine*
318 **2600**, 1–13 (2013).
- 319 21. Webster, L. T. & Hughes, T. P. The epidemiology of pneumococcus infection: the incidence and
320 spread of pneumococci in the nasal passages and throats of healthy persons. *The Journal of*
321 *Experimental Medicine* **53**, 535–552 (1931).
- 322 22. Wyllie, A. L. *et al.* *Streptococcus pneumoniae* in saliva of Dutch primary school children. *PLoS One* **9**,
323 e102045 (2014).
- 324 23. Krone, C. L. *et al.* Carriage of *Streptococcus pneumoniae* in Aged Adults with Influenza-Like-Illness.
325 *PLoS One* **10**, e0119875 (2015).
- 326 24. Trzciński, K. *et al.* Superiority of trans-oral over trans-nasal sampling in detecting *Streptococcus*
327 *pneumoniae* colonization in adults. *PLoS One* **8**, e60520 (2013).
- 328 25. Wyllie, A. L. *et al.* Molecular surveillance on *Streptococcus pneumoniae* carriage in non-elderly adults;
329 little evidence for pneumococcal circulation independent from the reservoir in children. *Sci. Rep.* **6**,
330 34888 (2016).
- 331 26. Branche, A. R. *et al.* Effect of prior vaccination on carriage rates of *Streptococcus pneumoniae* in older
332 adults: A longitudinal surveillance study. *Vaccine* **36**, 4304–4310 (2018).
- 333 27. Wyllie, A. L. *et al.* Molecular surveillance of nasopharyngeal carriage of *Streptococcus pneumoniae* in
334 children vaccinated with conjugated polysaccharide pneumococcal vaccines. *Sci. Rep.* **6**, 23809
335 (2016).
- 336 28. Bogaert, D. *et al.* Pneumococcal conjugate vaccination does not induce a persisting mucosal IgA
337 response in children with recurrent acute otitis media. *Vaccine* **23**, 2607–2613 (2005).
- 338 29. Carvalho, M. da G. S. *et al.* Evaluation and improvement of real-time PCR assays targeting *lytA*, *ply*,
339 and *psaA* genes for detection of pneumococcal DNA. *J. Clin. Microbiol.* **45**, 2460–2466 (2007).

- 340 30. Azzari, C. *et al.* Realtime PCR is more sensitive than multiplex PCR for diagnosis and serotyping in
341 children with culture negative pneumococcal invasive disease. *PloS one* **5**, e9282 (2010).
- 342 31. Pimenta, F. C. *et al.* Sequential Triplex Real-Time PCR Assay for Detecting 21 Pneumococcal
343 Capsular Serotypes That Account for a High Global Disease Burden. *Journal of Clinical Microbiology*
344 **51**, 647–652 (2013).
- 345 32. Regev-Yochay, G. *et al.* Nasopharyngeal carriage of *Streptococcus pneumoniae* by adults and
346 children in community and family settings. *Clinical infectious diseases : an official publication of the*
347 *Infectious Diseases Society of America* **38**, 632–639 (2004).
- 348 33. Hamaluba, M. *et al.* A cross-sectional observational study of pneumococcal carriage in children, their
349 parents, and older adults following the introduction of the 7-valent pneumococcal conjugate vaccine.
350 *Medicine* **94**, e335 (2015).
- 351 34. Satzke, C. *et al.* The PneuCarriage project: a multi-centre comparative study to identify the best
352 serotyping methods for examining pneumococcal carriage in vaccine evaluation studies. *PLoS Med.*
353 **12**, e1001903 (2015).
- 354 35. Adler, H. *et al.* Pneumococcal colonization in healthy adult research participants in the conjugate
355 vaccine era, United Kingdom, 2010–2017. *The Journal of Infectious Diseases* (2019)
356 doi:10.1093/infdis/jiz034.
- 357 36. Miellet, W. R., Almeida, S. T., Trzciński, K. & Sá-Leão, R. *Streptococcus pneumoniae* carriage studies
358 in adults: Importance, challenges, and key issues to consider when using quantitative PCR-based
359 approaches. *Front. Microbiol.* **14**, 1122276 (2023).
- 360 37. Carvalho, M. D. G. *et al.* Revisiting Pneumococcal Carriage by Use of Broth Enrichment and PCR
361 Techniques for Enhanced Detection of Carriage and Serotypes. *Journal of Clinical Microbiology* **48**,
362 1611–1618 (2010).
- 363 38. van den Bergh, M. R. *et al.* Effects of the 10-valent pneumococcal nontypeable *Haemophilus*
364 *influenzae* protein D-conjugate vaccine on nasopharyngeal bacterial colonization in young children: a
365 randomized controlled trial. *Clinical infectious diseases : an official publication of the Infectious*
366 *Diseases Society of America* **56**, e30-9 (2013).
- 367 39. Ansaldi, F. *et al.* Carriage of *Streptococcus pneumoniae* in healthy adults aged 60 years or over in a
368 population with very high and long-lasting pneumococcal conjugate vaccine coverage in children:
369 rationale and perspectives for PCV13 implementation. *Hum. Vaccin. Immunother.* **9**, 614–620 (2013).
- 370 40. Huebner, R. E., Dagan, R., Porath, N., Wasas, A. D. & Klugman, K. P. Lack of Utility of Serotyping
371 Multiple Colonies for Detection of Simultaneous Nasopharyngeal Carriage of Different Pneumococcal
372 Serotypes. *The pediatric infectious disease journal* **19**, 1017–1020 (2000).
- 373 41. Rodrigues, F. *et al.* Viable *Neisseria meningitidis* is commonly present in saliva in healthy young
374 adults: Non-invasive sampling and enhanced sensitivity of detection in a follow-up carriage study in
375 Portuguese students. *PLOS ONE* **14**, e0209905 (2019).
- 376 42. Miellet, W. R. *et al.* Detection of *Neisseria meningitidis* in saliva and oropharyngeal samples from
377 college students. *Sci. Rep.* **11**, 23138 (2021).
- 378

379 Table 1. Sensitivity of pneumococcal carriage detection in nasopharyngeal and saliva samples
380 collected from PCV7-vaccinated 24-month-old children using conventional and molecular diagnostic
381 methods.

24-month-olds (n=288)²⁷		
Detection method	Carriage	Sensitivity
Culture		
Nasopharyngeal	161 (60%)	0.74
Saliva	ND ^a	0
qPCR		
Nasopharyngeal	187 (65%) [#]	0.85*
Saliva	155 (54%)	0.71
Overall	219 (76%)^{##}	1

382 ^aND, not detectable by culture due to abundant polymicrobial growth on culture-plate

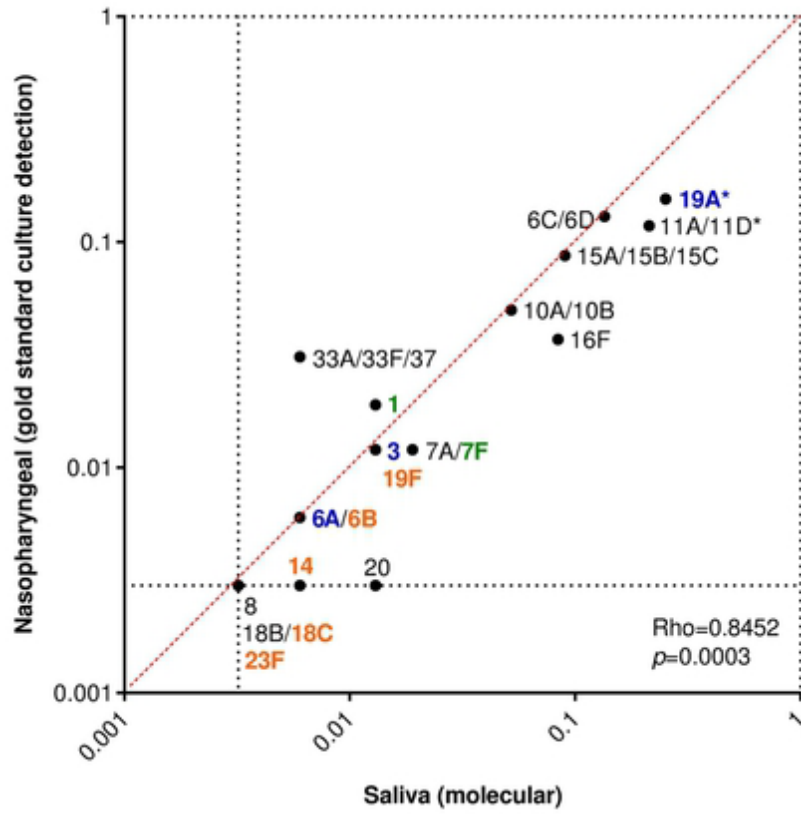
383 [#]p<0.05, ^{##}p<0.001 (Fisher's exact test), significantly more carriers detected by this approach as
384 compared to the gold standard method of culture of nasopharyngeal swab (top row)

385 *method significantly more sensitive in carriage detection (p<0.05) than any other tested in the
386 particular study group

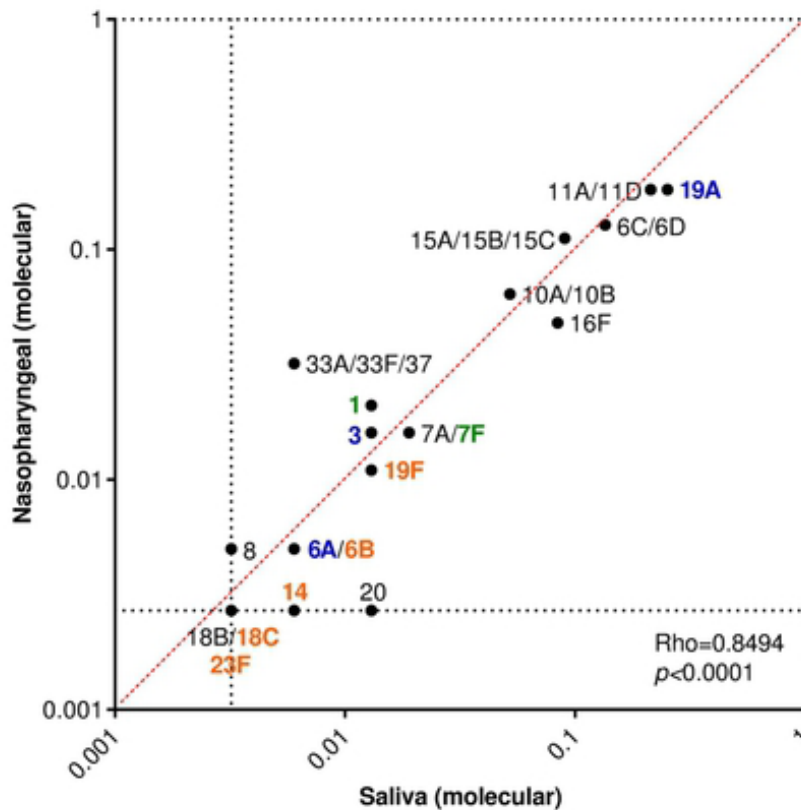
387

388 **FIGURES**

389



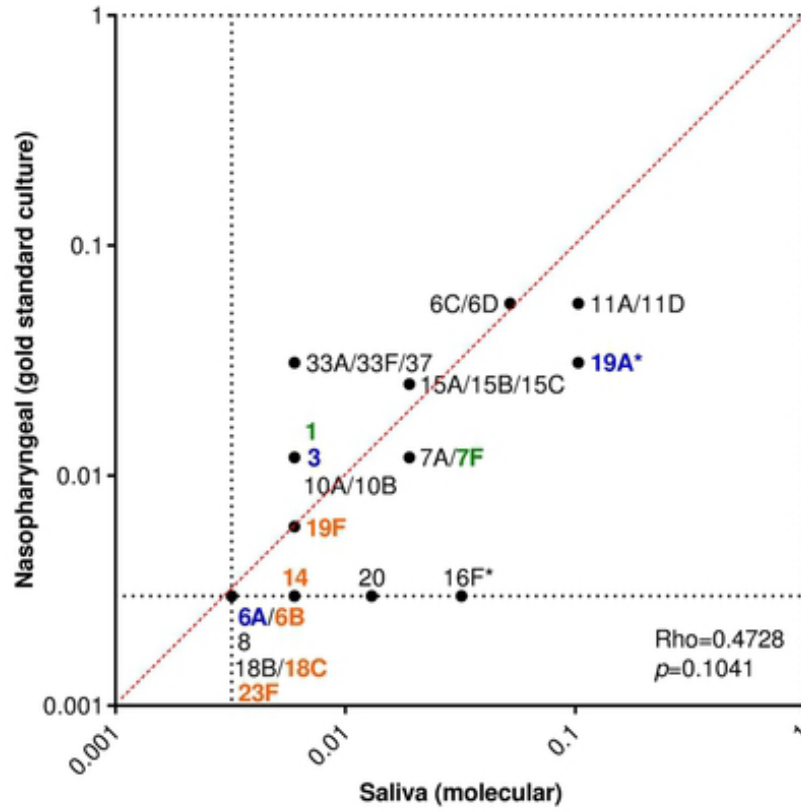
390 (A)



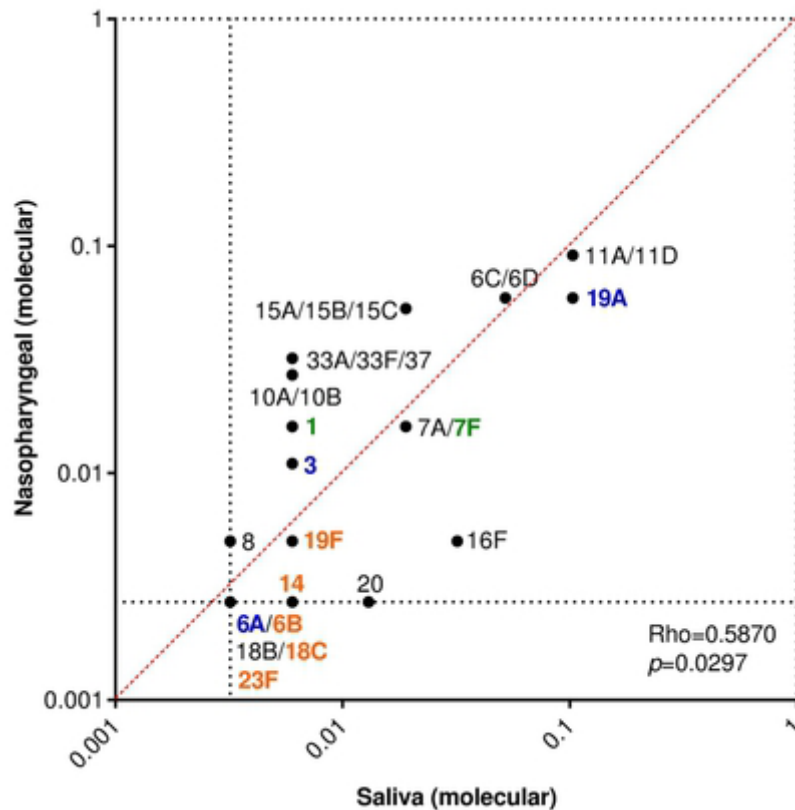
391 (B)

392 **Figure 1. Carriage frequency of pneumococcal serotypes detected in nasopharyngeal and**
 393 **saliva samples from 24-month-old children, when tested by conventional culture or molecular**
 394 **methods.** Graphs depict the correlation between the overall carriage frequency of serotypes (from the
 395 subset targeted by qPCR), as detected by (A) culture or (B) molecular methods applied to
 396 nasopharyngeal swabs compared to the overall carriage frequency of the corresponding serotype
 397 when saliva samples were tested by qPCR. The frequency of carriage was calculated for each
 398 serotype by the total number of samples testing positive for particular serotype by either the Quellung
 399 or molecular methods, over the total number of pneumococcal carriers detected for each study group.
 400 Serotypes not detected by only one of the methods were assigned a value of 0.5 x the fraction
 401 representing a single carrier. Serotypes not detected by both methods were excluded from correlation
 402 calculations. Font colour indicates serotypes targeted by PCV7 (orange), PCV10 (green), PCV13
 403 (blue) or NVTs (black). Asterisks depict serotypes which differed significantly ($p < 0.05$) in frequency of
 404 carriage between sample types.

405



406 (A)



407 (B)

408 **Figure 2. Investigating the additive effect of testing samples obtained from different niches on**
409 **the frequency of pneumococcal serotypes detected in 24-month-old children.** Graphs depict
410 serotype carriage frequency in pneumococcal carriers who tested positive for a specific serotype in
411 only one sample type; individuals who were positive for the same serotype in both sample types were
412 excluded from analysis. The frequency of carriage was calculated for each serotype by the total
413 number of samples testing positive for that particular serotype by either the Quellung or molecular
414 methods, over the total number of pneumococcal carriers detected by that method. When a serotype
415 was detected by only one of the methods, for the method it was not detected by, it was assigned a
416 value of 0.5 x the fraction representing a single carrier. Serotypes not detected by both methods were
417 excluded from correlation calculations. While (A) significantly higher carriage frequencies of serotypes
418 16F and 19A were detected when saliva was tested by qPCR as compared to the gold standard
419 culture-based method ($p < 0.05$), (B) no serotype was detected more frequently by either sample type
420 when samples were tested by qPCR. Font colour indicates serotypes targeted by PCV7 (orange),
421 PCV10 (green), PCV13 (blue) or NVTs (black). Asterisks depict serotypes which differed significantly
422 ($p < 0.05$) in frequency of carriage between sample types.