

1 **Full Title:** A Descriptive Study of a Clinical Pharmacist’s Role in the Outpatient Pulmonary  
2 Hypertension Clinic in the United States (CliPR-PH)

3 **Authors:** Vienica Funtanilla, PharmD<sup>1</sup>, Dylan Lee<sup>2</sup>, Eric Kim<sup>2</sup>, Crystal Zhou, PharmD, APh, AHSCP,  
4 BCACP<sup>3</sup>

5 <sup>1</sup>University of California, San Francisco Department of Clinical Pharmacy and Janssen Scientific  
6 Affairs, <sup>2</sup>University of California, San Francisco School of Pharmacy, <sup>3</sup>University of California, San  
7 Francisco School of Pharmacy and Department of Clinical Pharmacy

8 **Short Title:** CliPR-PH Study

9 **Corresponding author:**

10 Vienica Funtanilla ([vienicafuntanilla@gmail.com](mailto:vienicafuntanilla@gmail.com))

11 521 Parnassus Avenue, Rm 3304, UCSF Box 0622

12 San Francisco, CA 94143

13 **Total word count:** 3272

14 **Abstract**

15 BACKGROUND: Pulmonary arterial hypertension (PAH) is a rare disease affecting the heart and  
16 lungs. Median survival was 2.8 years historically, but prognosis improved with the advances of  
17 PAH therapy. It is currently not standard of care for clinical pharmacists to be a part of the  
18 interdisciplinary care team in outpatient PH clinics to help manage patients' drug regimens, and  
19 there is limited literature that has explored the impact of clinical pharmacists on patient-related  
20 processes and outcomes. The goal of the CliPR-PH study is to characterize the activities of the  
21 clinical pharmacist as a member of the interdisciplinary team.

22 METHODS: CliPR-PH was a retrospective, descriptive, single-center cohort study of patients  $\geq 18$   
23 years, diagnosed with pulmonary hypertension, and managed by a clinical pharmacist practicing  
24 under a collaborative practice agreement between January 1, 2018 and July 31, 2020. Patients  
25 were excluded from the study if they were not on any PAH medications at the time of  
26 pharmacist encounter.

27 RESULTS: Sixty patients were included in the analysis and 331 clinical pharmacist interventions  
28 were documented over the study period. Interventions were regarding selexipag [88 (26.6%)],  
29 sildenafil [74 (22.4%)], tadalafil [46 (13.9%)], prior authorization (PA) completions [127 (38.4%)],  
30 PA troubleshooting [43 (13.0%)], and 'Other' [49 (14.8%)].

31 CONCLUSION: Clinical pharmacists can play an important role in closely monitoring patients  
32 during the medication titration phase and ensure prior authorizations are approved in a timely  
33 manner as part of the interdisciplinary team in the outpatient PH clinic setting using a  
34 collaborative practice model approach.

35 **Key Words:** collaborative practice, selexipag, titration, managing side effects

36 **Clinical Perspective (required by Circulation, in 2-3 bullet points and 100 words max per**  
37 **answer)**

38 What is new?

- 39 • There are currently no studies in the United States that assess a clinical pharmacist's role  
40 on the interdisciplinary team as part of a collaborative practice agreement in the  
41 outpatient pulmonary hypertension (PH) clinic.

42 What are the clinical implications?

- 43 • Integrating a clinical pharmacist on the medical team in an outpatient PH clinic setting  
44 allows them to closely monitor patients who are titrating selexipag, manage adverse  
45 events (AEs) that occur during the titration phase, and ensure medications requiring  
46 prior authorizations are approved in a timely manner.

## 47 **INTRODUCTION**

48 Pulmonary hypertension (PH) is a disease that affects the heart and lungs and is classified into 5  
49 groups. The approved drugs for PH are indicated for World Health Organization (WHO) Group 1,  
50 pulmonary arterial hypertension (PAH).<sup>1</sup> PAH is a rare disease with an estimated prevalence of  
51 48 to 55 cases per million adults based on registry data from economically developed  
52 countries.<sup>1</sup> It is characterized by elevated pulmonary arterial pressure and assessed via right  
53 heart catheterization. Before targeted PAH therapy was available, the prognosis for PH was  
54 poor with a median survival of 2.8 years and estimated 1-year, 3-year, and 5-year survival rates

55 of 68%, 48%, and 34%, respectively, according to the NIH registry. The prognosis improved after  
56 advances in PAH therapy in the 1990s, with 1-year, 3-year, 5-year, and 7-year survival rates of  
57 85%, 68%, 57%, and 49%, respectively, according to patients enrolled in the REVEAL registry  
58 between 2006 and 2009.<sup>2</sup>

59 Treatment regimens for PAH tend to be complex, in part because there are five classes of  
60 medications that are approved to treat PAH and they are frequently used in combination.<sup>3</sup> In  
61 patients without cardiopulmonary comorbidities, the 2022 ESC/ERS Guidelines for the  
62 treatment of PH recommend initial oral combination therapy in patients who are at low or  
63 intermediate risk of death at 1 year and initial triple therapy with a parenteral agent in patients  
64 at high risk of death at 1 year.<sup>1</sup> In addition to targeted therapy, supportive therapy such as oral  
65 anticoagulation, diuretics, digoxin, and management of anemia may also be warranted in  
66 patients who experience other cardiovascular complications due to PAH.<sup>1,4</sup>

67 Due to the complexity of medication treatment in PAH patients, clinical pharmacists can play a  
68 vital role as part of the interdisciplinary team. The different roles that clinical pharmacists can  
69 play in the treatment of patients with PAH include formulary management, medication safety  
70 such as the creation of medication order sets to lower chances of medication error, regulatory  
71 compliance, patient and care provider support, medication access, side effect management,  
72 drug interaction assessment, and transitions of care support.<sup>4,5</sup> It is currently not standard of  
73 care for clinical pharmacists to be a part of the interdisciplinary care team in outpatient PH  
74 clinics to help manage patients' drug regimens, and there is limited literature that has explored  
75 the impact of clinical pharmacists on patient-related processes and outcomes. The goal of the

76 CliPR-PH study is to further characterize the activities of the clinical pharmacist as a member of  
77 the interdisciplinary team.

### 78 ***Study design***

79 CliPR-PH was a retrospective, descriptive, single-center cohort study of patients  $\geq 18$  years,  
80 diagnosed with PH, and managed by an interdisciplinary team that included a clinical  
81 pharmacist between January 1, 2018 and July 31, 2020. The first date of encounter by the  
82 clinical pharmacist was identified as the index date.

### 83 ***Methods***

84 Patients  $\geq 18$  years of age with an established diagnosis of PH at the date of the first  
85 pharmacist's encounter, who had at least one clinic visit between January 1, 2018, to July 31,  
86 2020, were included in the study (Figure 1). To identify the study cohort, a list of patients was  
87 obtained from the University of California San Francisco (UCSF) Medical Center Information  
88 Technology Services for patients seen between this time period, with PH or PAH (ICD-9 codes:  
89 416.8, 747.83, 416.0, 416.8; ICD-10 codes: I27.20, P29.30, I27.2, I27.0, I27.24, I27.29, I27.21,  
90 I27.23, I27.22), and who interacted with a clinical pharmacist at the UCSF outpatient PH center.  
91 An encrypted spreadsheet was created that censored patient identifier information (medical  
92 record number and name) to collect patient information and pharmacist interventions.  
93 Interventions that were collected included medication changes (dose increase, switching  
94 therapy, or discontinuation), prior authorizations, enrollment in patient assistance programs,  
95 and side effect management. Patients were excluded from the study if they were not on any  
96 PAH medications at the time of their pharmacist encounter. Chart review was conducted by DL,

97 EK, and SC and VF and CZ verified for accuracy. Descriptive statistics were conducted using  
98 Microsoft Excel. This study was reviewed and approved by the WCG Institutional Review Board  
99 (IRB# 21-35283) as an exempt study under 45 CFR 46.104(d)(4).

## 100 **RESULTS**

### 101 ***Study population and characteristics***

102 Sixty patients met the inclusion criteria and were included in the analysis. Among the 60  
103 patients, there were 331 documented clinical pharmacist interventions over the study period.  
104 The study population at baseline consisted of patients with a mean age of 54 years, a higher  
105 number of females (60%), and predominantly WHO FC II and III (Table 1).

### 106 ***Pharmacist Interventions***

107 The clinical pharmacist supported a diverse range of medications and medication issues. Out of  
108 331 interventions, 88 (26.6%) interventions were regarding selexipag, 74 (22.4%) interventions  
109 were regarding sildenafil, and 46 (13.9%) interventions were regarding tadalafil [Figure 2]. One-  
110 hundred twenty-seven (38.4%) pharmacist interventions were prior authorization (PA)  
111 completions, 43 (13.0%) pharmacist interventions were PA troubleshooting, and 49 (14.8%)  
112 pharmacist interventions were 'Other', [Figure 3]. 'Other' consisted of a variety of pharmacist  
113 interventions including medication reconciliation, medication access troubleshooting not  
114 related to insurance (i.e., bubble packs), phone calls to patients for lab reminders and to  
115 pharmacies for medication approval verification, blood pressure check, and blood pressure  
116 machine troubleshooting.

## 117 **DISCUSSION**

118 The CliPR-PH study is the first study that examines clinical pharmacist work through a  
119 collaborative practice agreement supporting PH patients in the United States. In France, Roustit  
120 et al conducted a prospective, multicenter randomized controlled study that assessed the  
121 impact of clinical pharmacists in the collaborative care of patients diagnosed with PH and were  
122 on initial PH-specific (i.e., endothelin receptor antagonist, phosphodiesterase-5 inhibitors,  
123 prostacyclin analogs, or a combination of these drugs) and non-specific (i.e., diuretics and  
124 anticoagulants) therapy between March 2010 and August 2012. Drug-related problems (DRP)  
125 were more frequently resolved in the collaborative care group with a clinical pharmacist versus  
126 the standard of care group (86.5% vs 66.7%,  $p=0.01$ ). Resolution of DRPs also translated into  
127 reduced costs associated with DRP-related hospitalization. However, there was no  
128 demonstrated difference in adherence, satisfaction with medication, and health-related quality  
129 of life between groups.<sup>6</sup> Since the enrollment of patients between 2010 and 2012 in the Roustit  
130 et al study, new treatments in PH emerged, specifically selexipag's approval in 2015. Selexipag  
131 is a prostacyclin receptor agonist with a starting dose of 200 mcg twice daily and titrated to the  
132 highest tolerated dose, up to 1600 mcg twice daily.<sup>7</sup> With the approval of selexipag, the role of  
133 the clinical pharmacist has evolved. Selexipag requires dosing titration and clinical pharmacists  
134 have the expertise to closely monitor patients, perform dose titration strategies, and manage  
135 AEs during the titration phase. Selexipag is also recommended as an add-on therapy to the  
136 initial combination therapy per the 2022 ERS/ESC Guidelines, suggesting that patients on  
137 selexipag have more severe disease and are on more complex regimens.

138 Registry data shows that patients with PAH have a high chance of having a comorbid condition  
139 along with their PAH diagnosis. In the SPHERE registry of patients who initiated selexipag in the  
140 United States, 98.8% of 500 patients had at least one comorbidity and 55% were receiving  
141 combination therapy. Most patients at baseline were also WHO FC II (31%) and III (49.6%).<sup>8</sup> In  
142 our study, the most common medication that was involved the pharmacist's interventions was  
143 selexipag and 46.7% of patients at baseline were WHO FC III, suggesting that the population of  
144 patients encountered by the pharmacist had more severe disease and a more complex  
145 medication regimen. Additionally in UCSF's collaborative practice agreement, patients are  
146 referred to the pharmacist by the physician and usually, patients requiring referrals are those  
147 with more severe disease and whose treatments are more complex. Patients with more  
148 complex medication regimens provide an opportunity for pharmacists to utilize their  
149 knowledge in multiple disease states and play a role in identifying drug interactions and  
150 minimizing polypharmacy.

151 In patients who are initiating oral selexipag, there is a role for clinical pharmacists in the  
152 outpatient setting to help with dose titration and manage AEs. Since the recommended starting  
153 dose of selexipag is 200 mcg twice daily and patients titrate usually at weekly intervals of 200  
154 mcg twice daily to the highest tolerated dose up to 1600 mcg twice daily, it would take at least  
155 7 weeks for a patient to reach the highest tolerated dose. The dose can also be reduced if  
156 patients are not able to tolerate the titrated dose, which can take longer to reach the highest  
157 tolerated dose.<sup>7</sup> In a retrospective study conducted by Palevsky et al of specialty pharmacy data  
158 examining real-world dosing patterns of selexipag, 79% of 523 patients who had history of prior  
159 prostacyclin use and 87.1% of 3,408 patients who have no history of prior prostacyclin use



160 titrated slower than weekly intervals (>8 days/200 mcg twice daily).<sup>9</sup> This suggests that titration  
161 of selexipag is personalized per patient and clinical pharmacists as part of the interdisciplinary  
162 medical team can closely monitor these patients to ensure they are titrating at an appropriate  
163 speed to reach their individual maintenance doses. In a real-world study conducted by Chang et  
164 al of 113 Korean patients with PAH who initiated selexipag and were followed up for 24 weeks,  
165 it was found that AEs occurred more often in the titration phase and that recovery rates were  
166 65-77% with a median time to recovery of 15-70 days (range, 2-233 days). The median time to  
167 resolution of an AE was 15 days for nausea/vomiting and about 2 months for diarrhea, myalgia,  
168 and headache.<sup>10</sup> As highlighted by this data, the AEs associated with selexipag occur more often  
169 in the titration phase and takes a few weeks to recover. Patients may not be willing to continue  
170 taking a medication with AEs especially if they are not aware of what to expect. Clinical  
171 pharmacists can closely monitor patients on selexipag as they titrate to their maintenance dose  
172 and help manage AEs.

173 In addition to closely monitoring patients during selexipag titration, the clinical pharmacist in  
174 our study played an essential role in improving medication access for patients through  
175 facilitating insurance approval. Pharmacists are knowledgeable with the insurance approval  
176 process and can use best practice for prior authorization approvals so that patients receive  
177 their medications in a timely manner. In a retrospective, single-center study on patients  
178 diagnosed with PAH, Shah et al evaluated patients' adherence to phosphodiesterase-5 inhibitor  
179 therapy within an integrated pharmacy practice model at an outpatient pulmonary clinic at an  
180 academic institution. The pulmonary clinic collaborated with a specialty pharmacy and  
181 incorporated a clinical pharmacist and pharmacy technician as part of the healthcare team. In

182 the integrated care model, clinical pharmacists provided comprehensive medication  
183 management, patient education, ongoing treatment monitoring, and assistance with transitions  
184 of care. Shah et al found that for the 131 patients in their analysis, the mean proportion days  
185 covered (PDC) was 96% (SD= 0.092), which is above the study's defined adherence threshold of  
186 80% PDC.<sup>11</sup> The responsibilities of the pharmacist in this model are similar to the type of  
187 interventions performed by the pharmacist in our study. The models slightly differ as our study  
188 used collaborative practice agreement between the physician and clinical pharmacist rather  
189 than specialty pharmacy. The pharmacist's role differs between a specialty pharmacy model  
190 and a collaborative care practice model. In a collaborative care practice model, such as our  
191 study, the clinical pharmacist played a role in managing dosing titration and closely monitoring  
192 patients to ensure they tolerated the titration well. Collaborative care practice pharmacists can  
193 also work closely with physicians regarding recommendations and send prescriptions directly to  
194 the pharmacy. This suggests that there could be a benefit to integrating pharmacists in the  
195 outpatient PH clinic as they can improve dose titration tolerability, medication access, and  
196 higher touch points of care in patients with PAH.

197 Clinical pharmacists can play an important role as part of the interdisciplinary team in the  
198 outpatient PH clinic setting using a collaborative care practice model approach. They can  
199 manage titration of medication and adverse events in complex patients who may have more  
200 severe PH and ensure prior authorizations are approved in a timely manner. Further research is  
201 warranted to measure how clinical pharmacists' interventions lead to better outcomes, such as  
202 medication adherence, patient persistence rates, and time and money saved as part of the  
203 interdisciplinary team. Future research can also closely measure titration strategies and

204 duration by a clinical pharmacist compared to the standard of care without a clinical pharmacist  
205 on the interdisciplinary medical team and assess how that impacts patient outcomes.

### 206 ***Limitations***

207 Limitations include the study design as a retrospective chart review, a small sample size from a  
208 single-center institution, descriptive data, and utilization of some baseline data that may not  
209 have aligned with the index pharmacy visit date. While the results of our study may not be able  
210 to be generalized to all patients diagnosed with PAH at other centers, we hope the  
211 interventions of clinical pharmacists at our center can help inform program development in  
212 other institutions.

### 213 ***Conclusions***

214 Clinical pharmacists can play an important role in closely monitoring patients during the  
215 medication titration phase and ensure prior authorizations are approved in a timely manner as  
216 part of the interdisciplinary team in the outpatient PH clinic setting using a collaborative  
217 practice model approach.

### 218 ***Acknowledgements***

219 The authors would like to thank Sylvia Choi, for helping with chart reviews; Jennifer Cocohoba,  
220 PharmD, for helping to review the manuscript; and the UCSF IT team for generating an initial list  
221 of patients to begin chart reviews.

### 222 ***Sources of Funding***

223 WCG IRB submission was funded by University of California, San Francisco, in which the authors  
224 were affiliated with at the time of analysis and writing of the study.

## 225 **Author Disclosures**

226 VF was a Post-Doctoral Fellow with Janssen Pharmaceuticals and UCSF at the time of analysis  
227 and writing of this study.

## 228 **References**

- 229 1. Humbert M, Kovacs G, Hoeper M, et al. 2022 ESC/ERS Guidelines for the diagnosis and  
230 treatment of pulmonary hypertension. *Eur Heart J*. 2022;00:1-114.
- 231 2. Lau EM, Giannoulatou E, Celermajer D, et al. Epidemiology and Treatment of  
232 Pulmonary Arterial Hypertension. *Nat Rev Cardiol*. 2017;14(10)Oct:603-614.
- 233 3. Lai Y, Potoka K, Champion H, et al. Pulmonary Arterial Hypertension. *Circ Res*. 2014; 115  
234 (1): 115-130. doi: 10.1161/CIRCRESAHA.115.301146.
- 235 4. Macaulay TE, Covell MB, Pogue KT. An Update on the Management of Pulmonary  
236 Arterial Hypertension and the Pharmacist's Role. *J Pharm Pract*. 2015;29(1):67-76.  
237 doi:10.1177/0897190015615902.
- 238 5. Shane, R, Waldthausen, E, Kyle, J. Pharmacist's Role in Managing Pulmonary  
239 Hypertension. *US Pharm*. 2023;48(2):HS-2-HS-5.
- 240 6. Roustit, M, Chaumais, M, Chapuis, C, Gairard Dory, A, et al. Evaluation of a collaborative  
241 care program for pulmonary hypertension patients: a multicenter randomized trial. *Int J*  
242 *Clin Pharm*. 2020;42(4), 1128-1138.
- 243 7. UPTRAVI® (selexipag) full Prescribing Information. Actelion Pharmaceuticals US, Inc.

- 244 8. Kim NH, Hemnes AR, Chakinala MM, et al. Patient and disease characteristics of the first  
245 500 patients with pulmonary arterial hypertension treated with selexipag in real-world  
246 settings from SPHERE. *J Heart Lung Transplant*. 2021;40(4):279-288.
- 247 9. Palevsky H, Pruett J, Ogbomo A, et al. Examining dosing patterns for selexipag in real-  
248 world practice using US specialty pharmacy data. Poster presented at: Academy of  
249 Managed Care Pharmacy (AMCP); April 21-24, 2020; Houston, TX.
- 250 10. Chang SA, Lee SH, Choi JH, et al. Real-world practice patterns and characteristics of  
251 adverse events with selexipag in Korean patients with pulmonary arterial hypertension.  
252 *Expert Opin Drug Saf*. 2022. doi: 10.1080/14740338.2022.2069750. Epub.
- 253 11. Shah, N, Mitchell, R, Proctor, ST, Choi, L, et al. High rates of medication adherence in  
254 patients with pulmonary arterial hypertension: An integrated specialty pharmacy  
255 approach. *PLoS One*. 2019;14(6). doi:10.1371/journal.pone.0217798.

256 **Table 1. Baseline characteristics**

Characteristic	Patients (N = 60)
Sex	
Female, n (%)	36 (60.0)
Male, n (%)	24 (40.0)
Age	
Mean $\pm$ SD	54.0 $\pm$ 14.89
Distribution – n (%)	

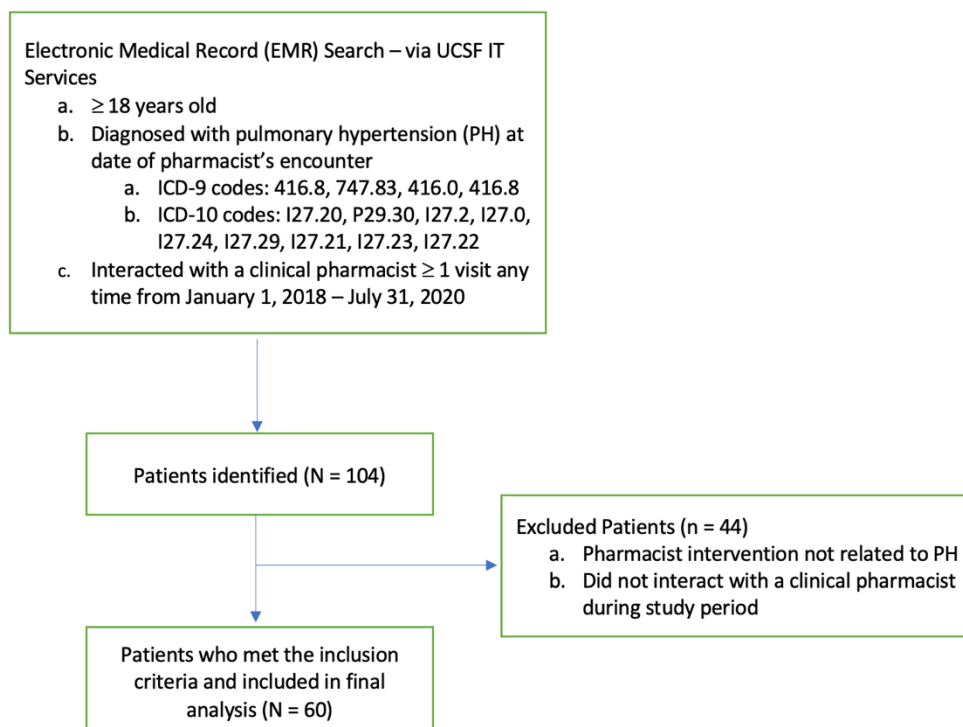
< 65 years	45 (75.0)
≥ 65 years	15 (25.0)
BMI, kg/m <sup>2</sup>	28.7 ± 5.89
SBP, mmHg	122.9 ± 19.44
DBP, mmHg	71.9 ± 12.29
HR, beats per minute	82.3 ± 14.43
RR, breaths per minute	17.7 ± 2.01
eGFR <sup>†</sup> (N=59), mL/min	78.5 ± 26.03
BNP <sup>†</sup> (N=59), ng/L, median (range)	80 (5 – 1950)
Insurance <sup>†</sup> (N=58), n (%)	
Federal Insurance (Medi-Cal/Medicare)	45 (77.6)
Private Insurance	13 (22.4)
Pericardial Effusion <sup>†</sup> (N=52), n (%)	9 (17.3)
Predicted DLCO <sup>†</sup> (N=35), n (%)	
≤ 40%	11 (31.4)
> 40%	24 (68.6)
mRAP <sup>†</sup> (N=52), n (%)	
> 20 mmHg	0 (0.0)
≤ 20 mmHg	52 (100.0)
PVR <sup>†</sup> (N=52), n (%)	
< 5 WU	12 (23.0)

≥ 5 WU	40 (77.0)
WHO Functional Class, n (%)	
I	1 (1.7)
II	25 (41.7)
III	28 (46.7)
IV	6 (10.0)
Comorbidities, n (%)	
Hypertension	28 (46.7)
T2DM <sup>†</sup> (N=42)	10 (23.8)
Thyroid disorder <sup>†</sup> (N=59)	10 (16.9)
COPD	10 (16.7)
Depression	9 (15.0)
Sleep Apnea	17 (28.3)
Family History – n (%)	
Heart disease <sup>†</sup> (N=27)	25 (92.6)
Pulmonary hypertension <sup>†</sup> (N=57)	5 (8.8)
<p><b>Notes:</b> *Data is presented as mean ± SD unless otherwise indicated. Percentages may not equal to 100% due to rounding. †Total N does not equal to 60 due to missing data.</p> <p><b>Abbreviations:</b> BMI=body mass index; SBP=systolic blood pressure; DBP=diastolic blood pressure; HR=heart rate; RR=respiratory rate; eGFR=estimated glomerular filtration rate; BNP=B-type natriuretic peptide; DLCO=diffusing capacity for carbon monoxide; mRAP=mean</p>	

right atrial pressure; PVR=pulmonary vascular resistance; WHO=World Health Organization;  
T2DM=type II diabetes; COPD=chronic obstructive pulmonary disease; PH=pulmonary  
hypertension; WU=Wood units.

257

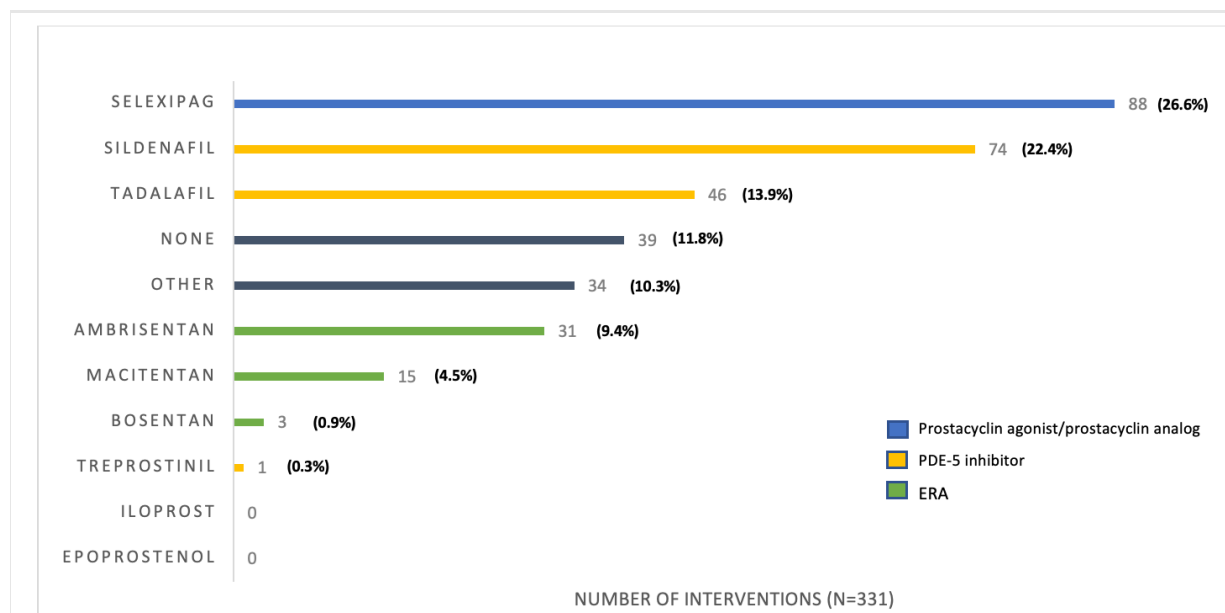
258 **Figure 1. Inclusion/Exclusion Criteria**



259

260 **Figure 2. Medications involved in pharmacist interventions**





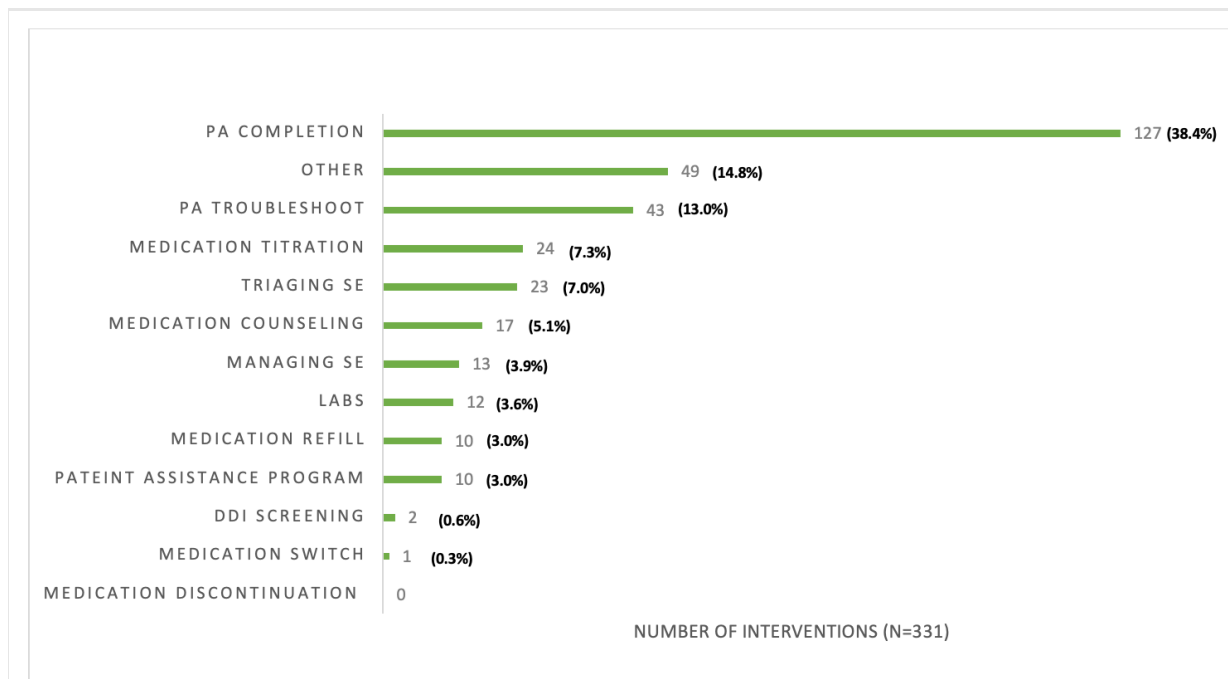
**Figure 2. Medications involved in pharmacist interventions**

**Notes:** None indicates that no medication was associated with the pharmacist intervention (i.e., Intervention was regarding medication reconciliation, lab reminders, etc.). Other indicates medication that were not PAH-targeted therapies.

\*Selexipag is a prostacyclin receptor agonist. Treprostnil, iloprost, and epoprostenol are prostacyclin analogs.

**Abbreviations:** ERA=endothelin receptor antagonist; PDE-5=phosphodiesterase-5.

262 **Figure 3. Pharmacist interventions**



**Figure 3. Pharmacist interventions**

**Note:** “Other” interventions included medication reconciliation, medication access troubleshooting not related to insurance (i.e., bubble packs), call reminders to patients, calls to pharmacies and insurance companies to verify medication approvals, blood pressure check, and blood pressure machine troubleshooting.

**Abbreviations:** DDI=drug-drug interaction; PA=prior authorization; SE=side effect.

263