

ETIOLOGY OF PRIMARY CEREBELLAR INTRACEREBRAL HEMORRHAGE BASED ON TOPOGRAPHIC LOCALIZATION

Diego Incontri, MD^{1,2}, Sarah Marchina, PhD¹, Alexander Andreev, MD¹, Mitchell Wilson, MD¹,
Jia-Yi Wang, MD¹, David Lin, BA¹, Elizabeth C. Heistand, BA¹, Filipa Carvalho, BA¹, Magdy Selim,
MD, PhD¹, Vasileios-Arsenios Lioutas, MD¹

¹ Department of Neurology, Stroke Division, Beth Israel Deaconess Medical Center and Harvard Medical School, Boston, Massachusetts, USA

² Centro de Investigación en Ciencias de la Salud (CICSA), FCS, Universidad Anáhuac México Campus Norte, Av. Universidad Anáhuac No. 46, Col. Lomas Anáhuac, Huixquilucan, CP 52786, Edo. de México, México

Short title: Etiology of primary cerebellar hemorrhage

Corresponding author:

- Diego Incontri, MD
- Email address: dincontr@bidmc.harvard.edu
- Address: Department of Neurology, Stroke Division, Beth Israel Deaconess Medical Center and Harvard Medical School, 330 Brookline Avenue, Boston, MA 02215, USA

Word count: 3,846

Abstract

Background: Cerebellar intracerebral hemorrhage (cICH) is often attributed to hypertension or cerebral amyloid angiopathy (CAA). However, deciphering the exact etiology can be challenging. A recent study reported a topographic etiologic relationship with superficial cICH secondary to CAA. We aimed to re-examine this relationship between topography and etiology in a separate cohort of patients and using the most recent Boston criteria version 2.0.

Methods: Retrospective analysis of consecutive patients with primary cICH admitted to a tertiary academic center between 2000-2022. cICH location on brain CT/MRI scan(s) was divided into strictly superficial (cortex, surrounding white matter, vermis), vs deep (cerebellar nuclei, deep white matter) or mixed (both regions). MRIs were rated for markers of cerebral small vessel disease. We assigned possible/probable vs absent CAA using Boston criteria 2.0.

Results: We included 197 patients; 106 (53.8%) females, median age 74 (63-82) years. Fifty-six (28%) patients had superficial cICH and 141 (72%) deep/mixed cICH. MRI was available for 112 (57%) patients [30(26.8%) with superficial and 82(73.2%) with deep/mixed cICH]. Superficial cICH patients were more likely to have possible/probable CAA (48.3% vs 8.6%; OR 11.43, 95%CI 3.26-40.05; $p<0.001$), strictly lobar cerebral microbleeds (CMBs) (51.7% vs 6.2%; OR 14.18, 95%CI 3.98-50.50; $p<0.001$), and cortical superficial siderosis (13.8% vs 1.2%; OR 7.70, 95%CI 0.73-80.49; $p=0.08$). Patients with deep/mixed cICH patients were more likely to have deep/mixed CMBs (59.2% vs 3.4%; OR 41.39, 95% CI 5.01-341.68; $p=0.001$), lacunes

(54.9% vs 17.2%; OR 6.14, 95% CI 1.89-19.91; p=0.002), severe basal ganglia enlarged perivascular spaces (36.6% vs 7.1%; OR 7.63, 95% CI 1.58-36.73; p=0.01), hypertension (84.4% vs 62.5%; OR 3.43, 95% CI 1.61,-7.30; p=0.001), and higher admission systolic blood pressure (172 [146-200] vs 146 [124-158] mmHg, p<0.001).

Conclusions: Our results suggest that superficial cICH is strongly associated with CAA whereas deep/mixed cICH is almost exclusively linked to hypertensive arteriopathy.

Keywords: cerebellar hemorrhage; cerebral small vessel disease; cerebral amyloid angiopathy.

Introduction:

Spontaneous ICH accounts for 10-15% of all strokes,¹ with the subgroup of patients with cerebellar ICH (cICH) accounting for approximately 10% of all ICHs and 1.5% of all strokes.²

In adults over 55 years of age, cerebral small vessel disease (cSVD) is the most common cause of spontaneous ICH.³ cSVD presents with two main etiologic subtypes: 1) arteriolosclerosis due to hypertensive arteriopathy; and 2) cerebral amyloid angiopathy (CAA).⁴ These two underlying processes are associated with distinct topographic localization of ICH⁵⁻⁷ and distribution patterns of cSVD markers.⁸⁻¹³ Patients with a lobar ICH and strictly lobar cSVD markers are more likely to have CAA as the predominant microangiopathy, while those with a deep ICH (basal ganglia, thalamus, deep white matter, and pons) and predominantly deep cSVD markers are more likely to have arteriolosclerosis as the predominant microangiopathy.

While the above associations are relatively well-established for supratentorial and brainstem primary ICH, the understanding of the etiology and underlying pathology of spontaneous cICH, as well as the significance of its topographic localization, is less well-established. Previous studies have linked spontaneous cICH to hypertension,^{14, 15} particularly when it occurs near the cerebellar nuclei and surrounding deep white matter.¹⁶ Studies exploring pathological and radiological findings of CAA did not examine cerebellar involvement¹⁷ and have not capitalized on recent advances in neuroimaging markers of cSVD. Neuropathological studies suggest that a subgroup of cICH might be related to CAA, particularly

when located in the superficial region of the cerebellum, including the cerebellar cortex and vermis.^{18, 19} Additionally, recent radiological studies have indicated that superficial cICH is associated with magnetic resonance imaging (MRI) markers of CAA, such as strictly lobar cerebral microbleeds.²⁰ Therefore, the purpose of this study was twofold: to validate previous results in an external cohort and to use MRI markers of cSVD to determine whether superficial cICH is associated with CAA according to the most recent version of the Boston criteria 2.0.

Methods:

We performed a retrospective analysis of consecutive patients with primary cICH admitted to a tertiary academic center between October 2000 and February 2022. We excluded patients with a secondary cause of cICH, such as those with antecedent head trauma, hemorrhagic transformation of ischemic infarct, arteriovenous malformation, cavernoma, hemorrhagic tumor/metastasis, and central nervous system vasculitis. We collected the following baseline characteristics: age, gender, vascular risk factors, blood pressure and serum glucose on presentation, the National Institutes of Health Stroke Scale (NIHSS) score, ICH score,²¹ presence of intraventricular hemorrhage (IVH); and anticoagulation, antiplatelet or statin use. The study was approved by the local institutional review board and ethics committee.

Imaging assessments and rating

Admission computed tomography (CT) scan and/or MRI were used to categorize cICH location into superficial (cerebellar cortex, surrounding white matter, and vermis), deep (cerebellar nuclei and deep white matter), or mixed (both regions) (*Figure 1 & 2*). We divided the patients into two groups: 1) deep/mixed cICH; and 2) superficial cICH.

In those patients who had an MRI done during the admission period, cSVD markers were rated according to the STRIVE consensus.²² Specifically, we rated MRIs for supratentorial cerebral microbleeds (CMBs), cortical superficial siderosis (cSS), lacunes, enlarged perivascular spaces (EPVS) in both the basal ganglia and centrum semiovale, both periventricular and deep white matter hyperintensities (WMH) using the Fazekas score, and WMH in a multispot pattern. Supratentorial CMBs were categorized based on their distribution into strictly lobar or strictly deep/mixed.²⁰ EPVS were dichotomized into severe (score > 20) or non-severe (score ≤ 20).²³ The multispot WMH pattern was defined as the presence of more than 10 small circular or ovoid T2-weighted FLAIR hyperintense lesions in the bilateral subcortical white matter.²⁴

The cSVD rating was conducted by 3 raters (DI, SM, and FC) prior to the commencement of this project as part of our prospective ICH registry which includes all ICH (both supra- and infratentorial) and preceded the present project conception by several months. Interrater agreement for various markers was assessed on a sample of 30 randomly selected brain MRIs. Cronbach's alpha was 0.79 for presence of CMBs, 0.73 for presence of lacunes, 0.87 for EPVS in basal ganglia rating, 0.73 for EPVS in centrum semiovale rating, 0.87 for deep WMH Fazekas

score, and 0.86 for periventricular WMH Fazekas score. cICH localization was performed by 2 raters, VL and DI, both blinded to the cSVD rating.

Based on the most recent Boston criteria version 2.0,²⁵ patients aged ≥ 50 years presenting with spontaneous ICH (cICH for this study) and at least two of the following strictly lobar T2*-weighted MRI markers were assigned a diagnosis of probable CAA: ICH, CMBs, cSS or convexity subarachnoid hemorrhage. If only one of these latter MRI markers was present, and in the absence of a secondary cause of ICH, a diagnosis of possible CAA was made. To avoid self-selection of patients who met the CAA criteria, we did not use the second section of the probable and possible CAA criteria, as cICH was not counted as a lobar or deep hemorrhagic lesion in this section. Finally, based on this most recent version of the Boston criteria, we compared the association between deep/mixed cICH and superficial cICH with the diagnosis of possible or probable CAA. The diagnoses of definite or probable CAA with supporting pathology were not given due to lack of pathology samples.

Statistical analysis

We used the Chi-square and Fisher's exact test to compare demographic, clinical, and neuroimaging characteristics between deep/mixed cICH and superficial cICH. Categorical variables were reported as absolute counts and percentages of the total available data. Continuous variables were reported as means (\pm standard deviation) or median (interquartile range). We used the Student's t-test for normally distributed continuous variables and the

Mann–Whitney U test for not normally distributed continuous variables. The Shapiro–Wilk test was used to assess the normality of the distribution for continuous variables.

We first examined univariable associations between predictive variables of interest (cSVD markers) and our outcome of interest (ciCH location). Subsequently, age, gender, and variables with a p value < 0.1 in univariate analysis were entered in a multivariable logistic regression model. We report Odds Ratios and 95% confidence intervals. Bonferroni correction was used, given multiple testing, and the significance level was determined at a 2-sided p-value of 0.005. All analyses were performed using STATA.17 (StataCorp, College Station, TX, USA).

Results:

We identified 197 patients with primary ciCH. The median age was 74 (63-82) years, and 106 (53.8%) patients were females. One hundred and forty-one (72%) patients had deep/mixed and 56 (28%) had superficial ciCH. *Table 1* shows the differences in baseline characteristics between both groups. Patients with deep/mixed ciCH were more likely to have a history of HTN (84.4% vs 62.5%, p=0.001) (OR 3.43, 95% CI 1.61,-7.30; p=0.001), prior ischemic stroke (22% vs 8.9%, p=0.03), presence of IVH (39.7% vs 17.9%, p=0.003), and higher systolic blood pressure (172 [146-200] vs 146 [124-158] mmHg, p<0.001) and mean arterial pressure (113.3 [99.3-130.7] vs 97 [86-114] mmHg, p<0.001) on admission when compared to those with superficial ciCH. Patients with superficial ciCH were more likely to have a medical history of coronary artery disease when compared to those with deep/mixed ciCH (30.4% vs 13.5%, p=0.006). We

did not find a statistically significant difference in the use of antiplatelet agents (38.2% vs 34.8, $p=0.65$) or anticoagulants (40% vs 32.9, $p=0.34$) between patients with superficial or deep/mixed cICH.

Of the 197 patients with primary cICH, 112 underwent MRI during admission. Of those, 82 (73.2%) had deep/mixed, and 30 (26.8%) had superficial cICH. *Table 2* shows the differences in MRI markers of cSVD between both groups. Univariate analysis showed that patients with superficial cICH were more likely to have a diagnosis of possible or probable CAA according to the Boston criteria version 2.0 (48.3% vs 8.6%, $p< 0.001$). In addition, patients with superficial cICH were more likely to have strictly lobar CMBs (51.7% vs 6.2%, $p<0.001$), cSS (13.8% vs 1.2%, $p=0.02$), and WMH in a multispot pattern (30% vs 12.4%, $p=0.03$) when compared to those with deep/mixed cICH. On the other hand, patients with deep/mixed cICH were more likely to have deep/mixed CMBs (59.2% vs 3.4%, $p<0.001$), lacunes (54.9% vs 17.2%, $p=0.001$), and severe EPVS in the basal ganglia (36.6% vs 7.1%, $p=0.005$).

In the multivariable logistic regression model (*Table 3*), presence of strictly lobar CMBs (OR 14.18, 95% CI 3.98-50.50; $p<0.001$) and a diagnosis of possible or probable CAA (OR 11.43, 95% CI 3.26-40.05; $p<0.001$) were associated with superficial cICH. Conversely, presence of deep/mixed CMBs (OR 41.39, 95% CI 5.01-341.68; $p=0.001$) or lacunes (OR 6.14, 95% CI 1.89-19.91; $p=0.002$), were associated with deep/mixed cICH. The OR for severe EPVS in the basal ganglia was 7.63 (95% CI 1.58-36.73), but did not reach statistical significance after Bonferroni correction ($p=0.01$).

Discussion:

We found that superficial cICH localization is associated with higher prevalence of MRI markers of CAA, such as strictly lobar CMBs, cSS, and WMH in a multispot pattern, and possible/probable CAA based on the Boston criteria 2.0. Conversely, deep/mixed cICH was associated with history of hypertension, prior ischemic stroke, higher systolic blood pressure and mean arterial pressure on admission, and MRI markers of hypertensive arteriopathy, such as deep/mixed CMBs, lacunes, and severe EPVS in the basal ganglia.

Our present work is in agreement with prior studies^{15, 20, 23} suggesting that the topographic localization of the hemorrhage within the cerebellum mirrors that of the cerebral cortex and subcortical regions, and signifies different pathophysiological mechanisms of cSVD. Interestingly, our findings correlate with the study of Duvernoy et al.,²⁶ indicating that intracortical cerebellar vessels closely resemble those of the cerebral cortex; and that vascular amyloid deposition involving the cerebellum is usually confined to cerebellar cortical and leptomeningeal vessels,^{18, 27, 28} a finding analogous to what occurs in the supratentorial region. Conversely, our study also showed that patients with deep/mixed cICH are more likely to have hypertensive arteriopathy as the primary etiology. This finding is likewise analogous to what occurs in the supratentorial region, where both deep^{4, 5} and mixed²⁹ ICH are driven mostly by hypertension.

Our findings provide external validation of previous studies showing that the location of cICH largely mirrors that of supratentorial brain regions. Furthermore, our study has several additional strengths. First, we used MRI markers of cSVD and the latest version of the Boston criteria 2.0 to affirm the association between CAA diagnosis and superficial cICH and further enhance the precision of the results. Second, our overall sample size and available MRI studies exceed those in previous similar studies.²⁰ Our findings have implications for both research and clinical practice. They could be employed to assess patients' eligibility for clinical trials targeting CAA and treatment decisions that may be location-dependent. However, our study has some limitations. The most significant is the lack of pathology samples to confirm a definite diagnosis of CAA based on the Boston criteria 2.0. Nevertheless, our findings are consistent with previous pathological^{16, 18, 19} and imaging²⁰ evidence suggesting that CAA is the primary etiology of superficial cICH and HTN the one of deep cICH. Another limitation is that MRI was not obtained in all patients included in this analysis, which might have introduced bias. *Table S1* shows the differences in baseline characteristics between patients with cerebellar ICH with and without MRI during admission. Although the results of this single-center study may not be generalizable to other cICH populations, they are largely in line with previous research. Overall, our results are exploratory and should be considered hypothesis-generating for future studies.

Conclusions:

Our results suggest that topographic localization within the cerebellum might be associated with different underlying pathophysiologic processes, with superficial cICH more

likely to be associated with CAA, whereas deep/mixed cICH is almost exclusively linked to hypertensive arteriopathy.

Sources of Funding

Drs. Lioutas and Selim receive grant funding from the NIH (U01NS102289, UF1NS120871, R01NS01795).

Disclosures

None.

References:

1. Sheth KN. Spontaneous intracerebral hemorrhage. *N Engl J Med*. 2022;387:1589-1596
2. Hemphill JC, 3rd, Amin-Hanjani S. Cerebellar intracerebral hemorrhage: Time for evidence-based treatment. *JAMA*. 2019;322:1355-1356
3. Gurol ME, Sacco RL, McCullough LD. Multiple faces of cerebral small vessel diseases. *Stroke*. 2020;51:9-11
4. Pasi M, Cordonnier C. Clinical relevance of cerebral small vessel diseases. *Stroke*. 2020;51:47-53
5. Fisher CM. Pathological observations in hypertensive cerebral hemorrhage. *J Neuropathol Exp Neurol*. 1971;30:536-550

6. Okazaki H, Reagan TJ, Campbell RJ. Clinicopathologic studies of primary cerebral amyloid angiopathy. *Mayo Clin Proc.* 1979;54:22-31
7. Knudsen KA, Rosand J, Karluk D, Greenberg SM. Clinical diagnosis of cerebral amyloid angiopathy: Validation of the boston criteria. *Neurology.* 2001;56:537-539
8. Martinez-Ramirez S, Romero JR, Shoamanesh A, McKee AC, Van Etten E, Pontes-Neto O, et al. Diagnostic value of lobar microbleeds in individuals without intracerebral hemorrhage. *Alzheimers Dement.* 2015;11:1480-1488
9. van Etten ES, Auriel E, Haley KE, Ayres AM, Vashkevich A, Schwab KM, et al. Incidence of symptomatic hemorrhage in patients with lobar microbleeds. *Stroke.* 2014;45:2280-2285
10. Greenberg SM, Vernooij MW, Cordonnier C, Viswanathan A, Al-Shahi Salman R, Warach S, et al. Cerebral microbleeds: A guide to detection and interpretation. *Lancet Neurol.* 2009;8:165-174
11. Charidimou A, Boulouis G, Pasi M, Auriel E, van Etten ES, Haley K, et al. Mri-visible perivascular spaces in cerebral amyloid angiopathy and hypertensive arteriopathy. *Neurology.* 2017;88:1157-1164
12. Pasi M, Boulouis G, Fotiadis P, Auriel E, Charidimou A, Haley K, et al. Distribution of lacunes in cerebral amyloid angiopathy and hypertensive small vessel disease. *Neurology.* 2017;88:2162-2168
13. Charidimou A, Linn J, Vernooij MW, Opherck C, Akoudad S, Baron JC, et al. Cortical superficial siderosis: Detection and clinical significance in cerebral amyloid angiopathy and related conditions. *Brain.* 2015;138:2126-2139

14. Heros RC. Cerebellar hemorrhage and infarction. *Stroke*. 1982;13:106-109
15. Pasi M, Charidimou A, Boulouis G, Fotiadis P, Morotti A, Xiong L, et al. Cerebral small vessel disease in patients with spontaneous cerebellar hemorrhage. *J Neurol*. 2019;266:625-630
16. Dinsdale HB. Spontaneous hemorrhage in the posterior fossa. A study of primary cerebellar and pontine hemorrhages with observations on their pathogenesis. *Arch Neurol*. 1964;10:200-217
17. Gavriiliuc P, Molad J, Yaghmour N, Honig A, Gomori JM, Cohen JE, et al. Cerebellar hemorrhages in patients with cerebral amyloid angiopathy. *J Neurol Sci*. 2019;405:116418
18. Itoh Y, Yamada M, Hayakawa M, Otomo E, Miyatake T. Cerebral amyloid angiopathy: A significant cause of cerebellar as well as lobar cerebral hemorrhage in the elderly. *J Neurol Sci*. 1993;116:135-141
19. Cuny E, Loiseau H, Rivel J, Vital C, Castel JP. Amyloid angiopathy-related cerebellar hemorrhage. *Surg Neurol*. 1996;46:235-239
20. Pasi M, Marini S, Morotti A, Boulouis G, Xiong L, Charidimou A, et al. Cerebellar hematoma location: Implications for the underlying microangiopathy. *Stroke*. 2018;49:207-210
21. Hemphill JC, 3rd, Bonovich DC, Besmertis L, Manley GT, Johnston SC. The ich score: A simple, reliable grading scale for intracerebral hemorrhage. *Stroke*. 2001;32:891-897

22. Wardlaw JM, Smith EE, Biessels GJ, Cordonnier C, Fazekas F, Frayne R, et al. Neuroimaging standards for research into small vessel disease and its contribution to ageing and neurodegeneration. *Lancet Neurol.* 2013;12:822-838
23. Pasi M, Pongpitakmetha T, Charidimou A, Singh SD, Tsai HH, Xiong L, et al. Cerebellar microbleed distribution patterns and cerebral amyloid angiopathy. *Stroke.* 2019;50:1727-1733
24. Charidimou A, Boulouis G, Haley K, Auriel E, van Etten ES, Fotiadis P, et al. White matter hyperintensity patterns in cerebral amyloid angiopathy and hypertensive arteriopathy. *Neurology.* 2016;86:505-511
25. Charidimou A, Boulouis G, Frosch MP, Baron JC, Pasi M, Albuchoer JF, et al. The boston criteria version 2.0 for cerebral amyloid angiopathy: A multicentre, retrospective, mri-neuropathology diagnostic accuracy study. *Lancet Neurol.* 2022;21:714-725
26. Duvernoy H, Delon S, Vannson JL. The vascularization of the human cerebellar cortex. *Brain Res Bull.* 1983;11:419-480
27. Yamada M, Tsukagoshi H, Otomo E, Hayakawa M. Cerebral amyloid angiopathy in the aged. *J Neurol.* 1987;234:371-376
28. Gilbert JJ, Vinters HV. Cerebral amyloid angiopathy: Incidence and complications in the aging brain. I. Cerebral hemorrhage. *Stroke.* 1983;14:915-923
29. Pasi M, Charidimou A, Boulouis G, Auriel E, Ayres A, Schwab KM, et al. Mixed-location cerebral hemorrhage/microbleeds: Underlying microangiopathy and recurrence risk. *Neurology.* 2018;90:e119-e126

Table 1. Differences in baseline characteristics between patients with deep/mixed cerebellar ICH and superficial cerebellar ICH.

Variable	Deep/Mixed Cerebellar ICH (n=141)	Superficial Cerebellar ICH (n=56)	p value
Age, median(IQR)	75 (64-82)	74 (62-83)	0.71
Females, n(%)	77 (54.6)	29 (51.8)	0.72
Comorbidities on admission			
Active smoking, n(%)	14 (10.4) ⁺	7 (12.7) ⁺⁺	0.63
Active alcohol use, n(%)	17 (12.6) ⁺	10 (18.2) ⁺⁺	0.31
Atrial fibrillation, n(%)	43 (30.5)	15 (26.8)	0.60
Hypertension, n(%)	119 (84.4)	35 (62.5)	0.001
DM type 2, n(%)	29 (20.6)	15 (26.8)	0.34
Hyperlipidemia, n(%)	58 (41.1)	23 (41.1)	0.99
CAD, n(%)	19 (13.5)	17 (30.4)	0.006
Prior ICH, n(%)	5 (3.5)	3 (5.4)	0.56
Prior ischemic stroke, n(%)	31 (22)	5 (8.9)	0.03
Cognitive impairment, n(%)	15 (10.6)	9 (16.1)	0.29
Coagulopathy (INR > 1.4 or platelets < 100,000), n(%)	33 (23.4)	20 (35.7)	0.07
Medications on admission			
Anticoagulation, n(%)	46 (32.9) ⁺⁺	22 (40) ⁺⁺	0.34
Antiplatelet, n(%)	48 (34.8) ⁺⁺⁺	21 (38.2) ⁺⁺	0.65
Statin, n(%)	58 (42) ⁺⁺⁺	22 (40) ⁺⁺	0.79
Clinical characteristics on admission			
SBP, median(IQR)	172 mmHg (146-200) ⁺⁺⁺⁺	146 mmHg (124-158) ⁺	< 0.001
DBP, median(IQR)	85.5 mmHg (74-98) ⁺⁺⁺⁺	78 mmHg (67-92) ⁺⁺⁺⁺	0.02
MAP, median(IQR)	113.3 mmHg (99.3-130.7) ⁺⁺⁺⁺	97 mmHg (86-114) ⁺⁺⁺⁺	< 0.001
NIHSS, median(IQR)	4 (2-16.5) ⁺⁺⁺⁺	2 (1-11) ⁺	0.06
ICH score, median(IQR)	2 (1-3)	2 (1-3)	0.08
Presence of IVH, n(%)	56 (39.7)	10 (17.9)	0.003

Glucose, median(IQR)	152 mg/dl (127-179) ⁺⁺⁺⁺⁺	144 mg/dl (117-166) ⁺⁺⁺⁺⁺	0.12
----------------------	---	---	------

ICH: intracerebral hemorrhage; IQR: interquartile range; DM: diabetes mellitus; CAD: coronary artery disease; INR: international normalized ratio; SBP: systolic blood pressure; DBP: diastolic blood pressure; MAP: mean arterial pressure; NIHSS: national institutes of health stroke scale; IVH: intraventricular hemorrhage.

*Six missing values

** One missing value

*** Three missing values

**** Seven missing values

***** Eleven missing values

***** Thirteen missing values

***** Two missing values

Table 2. Differences in MRI markers of cSVD between patients with deep/mixed cerebellar ICH and superficial cerebellar ICH.

Variable	Deep/Mixed Cerebellar ICH (n=82)	Superficial Cerebellar ICH (n=30)	OR (95% CI)*	p value
Possible or probable CAA, n(%)**	7 (8.6) ⁺	14 (48.3) ⁺	9.86 (3.40-28.58)	< 0.001
Lobar CMBs, n(%)	5 (6.2) ⁺	15 (51.7) ⁺	16.28 (5.09-52.03)	< 0.001
Deep/Mixed CMBs, n(%)	48 (59.2) ⁺	1 (3.4) ⁺	40.72 (5.27-314.25)	< 0.001
cSS, n(%)	1 (1.2) ⁺	4 (13.8) ⁺	12.8 (1.36-119.85)	0.02
Presence of lacunes, n(%)	45 (54.9)	5 (17.2) ⁺	5.83 (2.02-16.80)	0.001
Severe EPVS in BG, n(%)	26 (36.6) ⁺⁺⁺	2 (7.1) ⁺⁺	8.71 (1.93-39.29)	0.005
Severe EPVS in CSO, n(%)	19 (26.8) ⁺⁺⁺	11 (39.3) ⁺⁺	1.77 (0.70-4.45)	0.22
PV WMH Fazekas 2-3, n(%)	65 (80.2) ⁺	20 (66.7)	2.03 (0.79-5.17)	0.13
Deep WMH Fazekas 2-3, n(%)	45 (55.6) ⁺	13 (43.33)	1.63 (0.70-3.80)	0.25
Multispot WMH pattern, n(%)	10 (12.4) ⁺	9 (30)	3.04 (1.09-8.46)	0.03

MRI: magnetic resonance imaging; cSVD: cerebral small vessel disease; ICH: intracerebral hemorrhage; OR: odds ratio; CI: confidence interval; CAA: cerebral amyloid angiopathy; CMBs: cerebral microbleeds; cSS: cortical superficial siderosis; EPVS: enlarged perivascular spaces; BG: basal ganglia; CSO: centrum semiovale; PV: periventricular; WMH: white matter hyperintensities.

*Unadjusted analysis

**By Boston criteria version 2.0

* One missing value

** Two missing values

*** Eleven missing values

Table 3. Multivariable adjusted analysis exploring the association between MRI markers of cSVD and deep/mixed cerebellar ICH or superficial cerebellar ICH.

Variable	Deep/Mixed Cerebellar ICH (n=82)	Superficial Cerebellar ICH (n=30)	OR (95% CI)*	p value
Possible or probable CAA, n(%)**	7 (8.6) ⁺	14 (48.3) ⁺	11.43 (3.26-40.05)	< 0.001
Lobar CMBs, n(%)	5 (6.2) ⁺	15 (51.7) ⁺	14.18 (3.98-50.50)	< 0.001
Deep/Mixed CMBs, n(%)	48 (59.2) ⁺	1 (3.4) ⁺	41.39 (5.01-341.68)	0.001
cSS, n(%)	1 (1.2) ⁺	4 (13.8) ⁺	7.70 (0.73-80.49)	0.08
Presence of lacunes, n(%)	45 (54.9)	5 (17.2) ⁺	6.14 (1.89-19.91)	0.002
Severe EPVS in BG, n(%)	26 (36.6) ⁺⁺⁺	2 (7.1) ⁺⁺	7.63 (1.58-36.73)	0.01
Severe EPVS in CSO, n(%)	19 (26.8) ⁺⁺⁺	11 (39.3) ⁺⁺	1.78 (0.63-4.97)	0.26
PV WMH Fazekas 2-3, n(%)	65 (80.2) ⁺	20 (66.7)	1.77 (0.58-5.39)	0.31
Deep WMH Fazekas 2-3, n(%)	45 (55.6) ⁺	13 (43.33)	1.50 (0.57-3.98)	0.40
Multispot WMH pattern, n(%)	10 (12.4) ⁺	9 (30)	2.19 (0.71-6.71)	0.17

MRI: magnetic resonance imaging; cSVD: cerebral small vessel disease; ICH: intracerebral hemorrhage; OR: odds ratio; CI: confidence interval; CAA: cerebral amyloid angiopathy; CMBs: cerebral microbleeds; cSS: cortical superficial siderosis; EPVS: enlarged perivascular spaces; BG: basal ganglia; CSO: centrum semiovale; PV: periventricular; WMH: white matter hyperintensities.

*Multivariable adjusted analysis

**By Boston criteria version 2.0

⁺ One missing value

⁺⁺ Two missing values

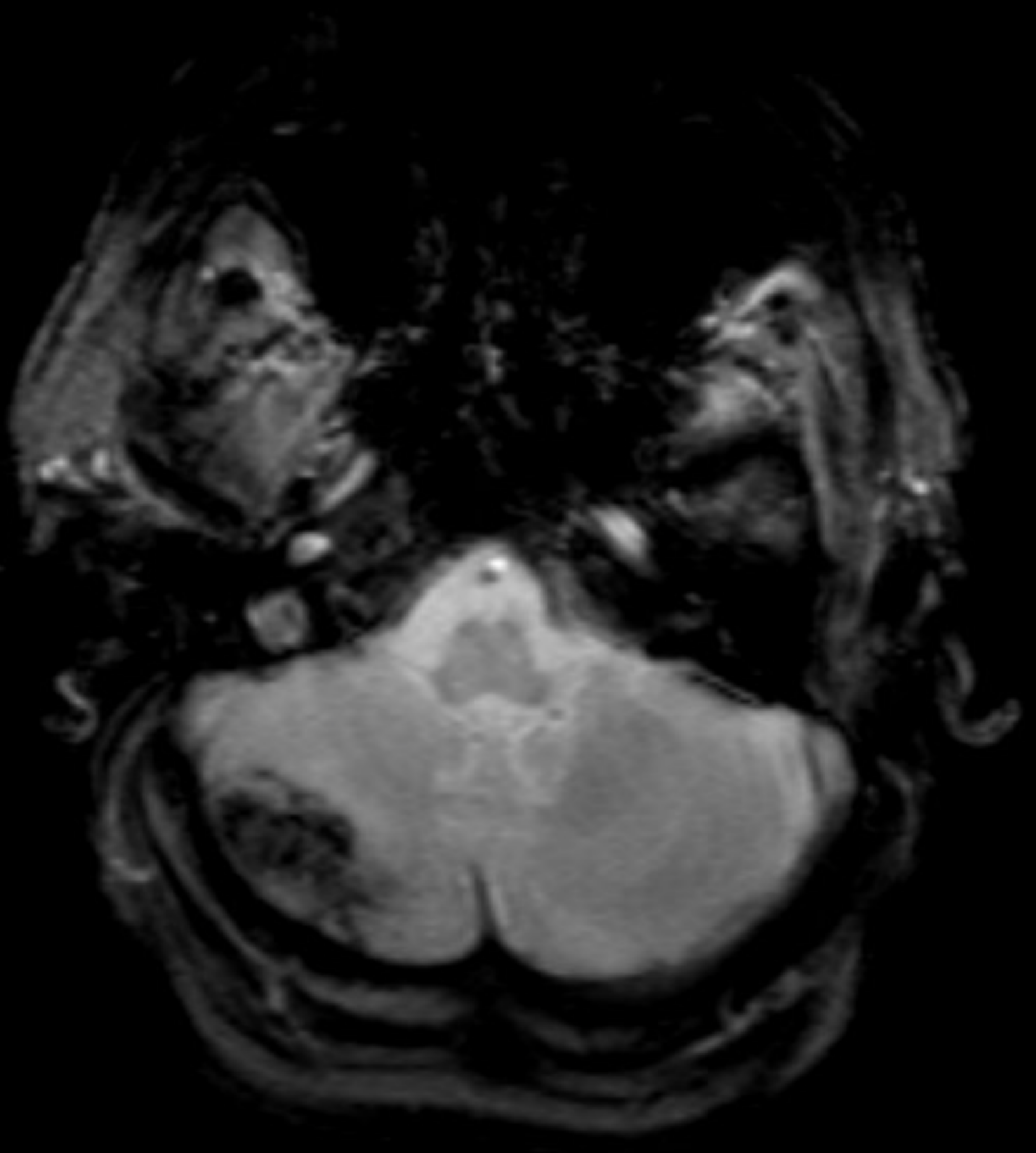
⁺⁺⁺ Eleven missing values

Figure Legends

Figure 1. Superficial cerebellar hemorrhage on T2*-weighted gradient-recalled echo (GRE), representative image. The superficial region of the cerebellum corresponds to the cerebellar cortex, surrounding white matter, and vermis.

Figure 2. Deep cerebellar hemorrhage on T2*-weighted gradient-recalled echo (GRE), representative image. The deep region of the cerebellum corresponds to the cerebellar nuclei and deep white matter.

AS



A

