

1 **Maternal B-vitamin and vitamin D status before, during and after pregnancy, and the**
2 **influence of supplementation preconception and during pregnancy: NiPPeR double-blind**
3 **randomized controlled trial (197/200)**

4 Keith M GODFREY ^{1,2}; Philip TITCOMBE ¹; Sarah EL-HEIS ^{1,2}; Benjamin B ALBERT ³; Elizabeth
5 Huiwen THAM ⁴; Sheila J BARTON ¹; Timothy KENEALY ³; Mary Foong-Fong CHONG ^{4,5}; Heidi
6 NIELD ¹; Yap Seng CHONG ^{4,6,7}; Shiao-Yng CHAN* ^{4,6,7}; Wayne S CUTFIELD* ^{3,8}; NiPPeR Study Group#

7 *Joint senior authors

8 #Members of the NiPPeR Study Group authors for the Medline citation are listed in the
9 Acknowledgements

10 ¹ MRC Lifecourse Epidemiology Centre, University of Southampton, University Hospital
11 Southampton, Southampton, UK.

12 ² NIHR Southampton Biomedical Research Centre, University of Southampton and University
13 Hospital Southampton, NHS Foundation Trust, Southampton, UK.

14 ³ Liggins Institute, University of Auckland, Auckland, New Zealand.

15 ⁴ Singapore Institute for Clinical Sciences, Agency for Science, Technology and Research,
16 Singapore.

17 ⁵ Saw Swee Hock School of Public Health, National University of Singapore and National
18 University Health System

19 ⁶ Department of Obstetrics and Gynaecology, Yong Loo Lin School of Medicine, National
20 University of Singapore, National University Health System, Singapore.

21 ⁷ Department of Obstetrics and Gynaecology, National University Hospital, Singapore

22 ⁸ A Better Start, New Zealand National Science Challenge, Auckland, New Zealand.

NOTE: This preprint reports new research that has not been certified by peer review and should not be used to guide clinical practice.

23 **Corresponding author:**

24 Professor Keith Godfrey, MRC Lifecourse Epidemiology Centre, University Hospital
25 Southampton Mailpoint 95, Southampton, UK.

26 Tel: +44 80777624; E-mail: kmg@mrc.soton.ac.uk

27 **Source of Funding**

28 Public good funding for this investigator-led study is through the UK Medical Research
29 Council (as part of an MRC award to the MRC Lifecourse Epidemiology Unit
30 (MC_UU_12011/4)); the Singapore National Research Foundation, National Medical
31 Research Council (NMRC, NMRC/TCR/012-NUHS/2014); the National University of
32 Singapore (NUS) and the Agency of Science, Technology and Research (as part of the Growth,
33 Development and Metabolism Programme of the Singapore Institute for Clinical Sciences
34 (SICS) (H17/01/a0/005); and as part of Gravida, a New Zealand Government Centre of
35 Research Excellence. Funding for provision of the intervention and control drinks and to cover
36 aspects of the fieldwork for the study has been provided by Société Des Produits Nestlé S.A
37 under a Research Agreement with the University of Southampton, Auckland UniServices Ltd,
38 SICS, National University Hospital Singapore PTE Ltd and NUS. KMG is supported by the
39 National Institute for Health Research (NIHR Senior Investigator (NF-SI-0515-10042), NIHR
40 Southampton 1000DaysPlus Global Nutrition Research Group (17/63/154) and NIHR
41 Southampton Biomedical Research Center (IS-BRC-1215-20004)), British Heart Foundation
42 (RG/15/17/3174) and the European Union (Erasmus+ Programme ImpENSA 598488-EPP-1-
43 2018-1-DE-EPPKA2-CBHE-JP). SYC is supported by a Singapore NMRC Clinician Scientist
44 Awards (NMRC/CSA-INV/0010/2016; MOH-CSAINV19nov-0002). The funders had no role
45 in the data collection and analysis, and the decision to submit for publication. For the purpose
46 of Open Access, the author has applied a Creative Commons Attribution (CC BY) license to any
47 Author Accepted Manuscript version arising from this submission.

48 **Short title** Maternal vitamin and vitamer status preconception to post-partum (65/70 chars)

49 **Abbreviations list**

50 AA: anthranilic acid

51 BMI: body mass index

52 CI: confidence interval

53 HAA: hydroxyanthranilic acid

54 HIV: human immunodeficiency virus

55 HK: 3-hydroxykynurenine

56 KA: kynurenic acid

57 LC-MS/MS: Liquid chromatography with tandem mass spectrometry

58 NiPPeR Trial: Nutritional Intervention Preconception and During Pregnancy to Maintain
59 Healthy Glucose Metabolism and Offspring Health trial

60 NRES: National Research Ethics Service

61 SDS: standard deviation score

62 UK: United Kingdom

63 US: United States

64 XA: 3- xanthurenic acid

65

66 **Clinical trial registration**

67 1) Date of registration: 15th July 2015

68 2) Date of initial participant enrollment: 3rd August 2015

69 3) Clinical trial identification number: NCT02509988; U1111-1171-8056

70 4) URL of the registration site: <https://www.clinicaltrials.gov/ct2/show/NCT02509988>

71 5) Data sharing information: Individual participant data may be shared upon reasonable
72 requests and are subject to approval by the trial management group and the trial consultative
73 panel. Application can be made through the corresponding author.

74 Word count: Abstract – 498 words; Main text – 5571 words

75 **Abstract**

76 *Background:* Maternal vitamin status preconception and during pregnancy have important
77 consequences for pregnancy outcome and offspring development. Changes in status from
78 preconception to early and late pregnancy and postpartum have been inferred from cross-
79 sectional data, with lower pregnancy concentrations often ascribed to plasma volume
80 expansion, but without truly longitudinal data from preconception through pregnancy and post-
81 delivery, and sparse data on the influence of supplementation. This study characterized
82 longitudinal patterns of maternal vitamin status from preconception, through early and late
83 pregnancy, to 6-months post-delivery, and determined the influence of supplementation.

84 *Methods and Findings:* Between 2015-2017, 1729 UK, Singapore and New Zealand women
85 aged 18-38 years planning conception were recruited from the community to a double-blind
86 controlled trial and randomized to a standard (control) or an intervention supplement
87 preconception and throughout pregnancy. Vitamins common to both supplements were folic
88 acid and β -carotene, with the intervention additionally including riboflavin, vitamins B6, B12
89 and D in amounts available in over-the-counter supplements, alongside iron, calcium and
90 iodine (control and intervention) and myo-inositol, probiotics and zinc (intervention only).
91 We measured maternal plasma concentrations of B-vitamins, vitamin D and
92 insufficiency/deficiency markers (homocysteine, hydroxykynurenine-ratio, methylmalonic
93 acid), at recruitment and 1-month after commencing intervention preconception, in early and
94 late pregnancy, and post-delivery (6-months after supplement discontinuation). From all
95 timepoint data, we derived standard deviation scores (SDS) to characterize longitudinal
96 changes in controls and differences between control and intervention participants. At
97 recruitment preconception, significant proportions had marginal or low plasma status for
98 folate (29.2% <13.6 nmol/L), riboflavin (7.5% <5 nmol/L, 82.0% \leq 26.5 nmol/L), vitamin
99 B12 (9.1% <221 pmol/L) and vitamin D (48.7% <50 nmol/L). Among controls, plasma

100 concentrations showed differing longitudinal patterns from preconception; riboflavin fell
101 through early/late pregnancy, 25-hydroxyvitamin D was unchanged in early pregnancy, and
102 vitamin B6 and B12 concentrations declined through pregnancy, becoming >1 SDS lower
103 than baseline by 28 weeks gestation, with 54.2% developing a low late pregnancy vitamin B6
104 (pyridoxal 5-phosphate <20 nmol/L). Preconception, the control/intervention groups had
105 similar baseline vitamin concentrations; 1-month after supplement commencement, plasma
106 concentrations became substantially higher in intervention participants; riboflavin by 0.77
107 SDS (95%CI 0.68-0.87), vitamin B6 1.07 (0.99-1.14), vitamin B12 0.55 (0.46-0.64) and
108 vitamin D 0.51 (0.43-0.60), with the higher levels maintained during pregnancy and marked
109 reduction in insufficiency/deficiency markers (lower homocysteine, hydroxykynurenine-ratio,
110 methylmalonic acid) and the late pregnancy prevalence of vitamin D <50 nmol/L reduced
111 from 35.1% to 8.5%. Plasma vitamin B12 was still higher in the intervention group 6-months
112 post-delivery.

113 *Conclusion:* Significant proportions of preconception women have marginal or low status of
114 folate, riboflavin, vitamin B12 and vitamin D, and many develop markers of vitamin B6
115 deficiency in late pregnancy. In the absence of supplementation, maternal plasma vitamin
116 concentrations show differing longitudinal patterns from preconception to early and late
117 pregnancy, suggesting plasma volume expansion does not wholly account for lower
118 gestational concentrations. Preconception/pregnancy supplementation in amounts available in
119 over-the-counter supplements substantially reduces the prevalence of deficiency/depletion
120 markers before and during pregnancy, and a higher maternal plasma vitamin B12 was
121 maintained during the recommended lactational period.

122 **Keywords:** (5-10) micronutrient; supplementation; preconception; pregnancy; postpartum;
123 vitamin B12; vitamin D; B-vitamin; vitamins.

124 **Introduction**

125 There is an increasing consensus that multiple micronutrient supplementation of pregnant
126 women living in low-middle income countries is beneficial for pregnancy outcomes (1). In
127 high income countries there are few large-scale trials of gestational micronutrient
128 supplementation, resulting in less consensus about the need for individual or multiple
129 micronutrient supplements to be taken. The principal exception relates to preconception and
130 early pregnancy folic acid supplementation and fortification programs, underpinned by the
131 landmark Medical Research Council trial (2). Vitamin D supplementation is also generally
132 recommended, in part based on the recent MAVIDOS trial (3); MAVIDOS used a higher dose
133 of vitamin D than is recommended in many settings (25 µg of cholecalciferol daily from early
134 pregnancy until delivery, vs 10 µg daily recommended in countries such as the UK (4)), which
135 reduced the incidence of infantile atopic eczema in the offspring (5) and improved measures of
136 bone health in the children at age 4 years (6).

137 Recent evidence from animal studies demonstrates that maternal nutritional status prior to
138 conception can have lasting effects on the offspring. This highlights a critical knowledge gap
139 with regards to the importance of maternal micronutrient status before and during human
140 pregnancy (7). Evidence from human studies supporting a role for preconception micronutrient
141 status is largely observational, but does point to important implications for pregnancy outcomes
142 and long-term offspring health (8). Examples include the associations of suboptimal vitamin
143 B12 and B6 status with an increased risk of preterm birth (9), and of maternal preconception
144 iodine deficiency with lower child IQ (10).

145 To date, maternal micronutrient status preconception has largely been inferred from pregnancy
146 data, and truly longitudinal studies describing changes from preconception to early and late
147 pregnancy and postpartum have not previously been conducted. The ongoing significant

148 prevalence of micronutrient insufficiencies among adolescent girls and women of reproductive
149 age in high income countries highlights the importance of documenting such changes (11).
150 Moreover, lower pregnancy concentrations are often ascribed to plasma volume expansion (12,
151 13), without consideration of the longitudinal pattern or measurement of
152 insufficiency/deficiency markers.

153 Human trials of micronutrient supplementation commencing before pregnancy remain
154 relatively few in number; while they have not always shown benefits for maternal and offspring
155 outcomes (14), a recent small trial did, however, report that maternal vitamin B12
156 supplementation from preconception until delivery improved offspring neurodevelopment at
157 age 2 years (15). Development of evidence-based guidelines for micronutrient intake
158 before/during pregnancy is additionally hindered by the paucity of randomized trial data on the
159 change in maternal micronutrient status resulting from preconception and pregnancy
160 supplementation using amounts available in over-the-counter supplements.

161 The NiPPeR trial (16) is a multicenter, double-blind, randomized controlled trial of a nutritional
162 supplement containing micronutrients, myo-inositol and probiotics, whose primary outcome
163 was the maintenance of euglycemia during pregnancy. The trial found no difference in
164 gestational glycemia between study arms, but there was a significant reduction in preterm
165 delivery, preterm pre-labor rupture of membranes and major post-partum hemorrhage with the
166 intervention compared with controls, who received a standard micronutrient supplement (17).

167 Longitudinal blood sampling in the NiPPeR trial provided an opportunity to determine the
168 changes in maternal plasma concentrations of B-vitamins, vitamin D and
169 insufficiency/deficiency markers (homocysteine, hydroxykynurenine-ratio, methylmalonic
170 acid) from preconception, through early and late pregnancy and to 6 months postpartum
171 (notably in the control group), and to examine the influence of maternal supplementation

172 preconception and during pregnancy on mean concentrations and markers of low vitamin
173 status.

174 **Subjects and Methods**

175 *Trial study design*

176 The study protocol has been previously published (16). Briefly, women planning a pregnancy
177 were recruited from the community across 3 study sites in the UK, Singapore and New Zealand,
178 between 2015-2017. Trial exclusion criteria were pregnancy/lactation at recruitment, assisted
179 conception (apart from taking clomiphene or letrozole alone), serious food allergy, pre-existing
180 diabetes mellitus, use of hormonal contraception or taking metformin, systemic steroids,
181 anticonvulsants or treatment for HIV, Hepatitis B or C in the past month. With stratification by
182 site and ethnicity to ensure balanced allocation, 1729 women were randomly assigned by an
183 electronic database to receive intervention (n=870) or control (n=859) nutritional supplements
184 from preconception until delivery. Maternal blood samples were collected from 870
185 intervention and 857 control women at preconception (at recruitment and one month after
186 commencing supplementation), and then in early and late pregnancy, and six months post-
187 delivery in those who became pregnant. Singleton pregnancies fulfilling the study criteria and
188 reaching 28 weeks' gestation with data on plasma vitamins at baseline and in late pregnancy
189 were achieved in 580 women (Consort diagram shown in Supplementary Figure 1), with 512
190 followed up at 6 months post-delivery.

191 Intervention and control supplements with similar sensory characteristics and packaged as a
192 powder in sachets were stored at 2-6°C until made up in 250 ml water and taken twice daily.
193 Ingredients common to control and intervention formulations were folic acid 400 µg/day, iron
194 12 mg/day, calcium 150 mg/day, iodine 150 µg/day and β-carotene 720 µg/day; the
195 intervention additionally included riboflavin 1.8 mg/day, vitamin B6 2.6 mg/day, vitamin B12

196 5.2 µg/day, vitamin D 10 µg/day, zinc 10 mg/day myo-inositol 4 g/day and probiotics
197 (*Lactobacillus rhamnosus* and *Bifidobacterium animalis sp. lactis*). Quantities were either UK
198 recommended daily allowances for pregnant women (vitamin D, zinc, folic acid, iodine),
199 minimal amounts for micronutrients linked with potential detrimental effects at higher doses
200 (iron, β-carotene, calcium), or amounts enhanced above those typical in over-the-counter
201 products (vitamins B6, B12, riboflavin) or used in previous trials (myo-inositol, probiotics)
202 (18, 19). Supplements were consumed from preconception following randomization until
203 delivery of the baby. Participants and all study personnel remained blinded to treatment
204 allocation until all pregnancy, delivery and neonatal data had been collected, and analysis of
205 the primary outcome completed. At enrolment, sociodemographic characteristics, menstrual,
206 obstetric and health histories and lifestyle habits were collected via interviewer-administered
207 questionnaires. Weight and height were measured to derive body mass index (BMI). Adherence
208 to the trial formulation ascertained by sachet counting was similar in the control and
209 intervention groups; overall, 80.6% had 80-100% adherence averaged from recruitment to
210 delivery, 15.8% had 60-80% adherence, and only 3.1% adherence below 60%. Women were
211 recommended to refrain from taking other supplements unless advised by their healthcare
212 practitioner (e.g. significant iron deficiency anemia).

213 The trial was approved by the United Kingdom, Singapore and New Zealand research ethics
214 services (Southampton: Health Research Authority NRES Committee South Central Research
215 Ethics Committee, reference 15/SC/01421; Singapore: the National Healthcare Group Domain
216 Specific Review Board, reference 2015/00205; New Zealand: the Health and Disability Ethics
217 Committee, reference 15/NTA/21). The relevant regulatory authorities confirmed that the
218 formulation was not an investigational medicinal product. All participants gave written
219 informed consent. Trial oversight and monitoring were provided by an independent data and

220 safety monitoring committee. This trial was prospectively registered at ClinicalTrials.gov
221 NCT02509988, UTN U1111-1171-8056.

222 *Vitamin, vitamer and metabolite measurements and status markers*

223 EDTA plasma was obtained by centrifugation of peripheral venous blood samples at 1600 g at
224 4°C for 10 minutes and stored at -80°C for later analyses. Aliquots were available for
225 measurement of plasma vitamins and related vitamers/metabolites at the following five time-
226 points: preconception at recruitment (n=1721) and 1 month after commencing intervention
227 (n=1454), in early (7-11 weeks' gestation, n=634) and late pregnancy (around 28 weeks'
228 gestation, n=580), and post-delivery, 6 months after discontinuation of supplementation
229 (n=512). Using a targeted method based on liquid chromatography-tandem mass spectrometry
230 (Bevital, Bergen, Norway)(20), we measured plasma concentrations of vitamins present in the
231 control and intervention groups, related vitamers and metabolites that reflect vitamin status:
232 homocysteine (reflecting 1-carbon status and an indicator of folate and B-vitamin deficiency),
233 riboflavin, flavin mononucleotide (reflecting riboflavin status), pyridoxal 5-phosphate (vitamin
234 B6), 3-hydroxykynurenine (HK), kynurenic acid (KA), anthranilic acid (AA), 3- xanthurenic
235 acid (XA), hydroxyanthranilic acid (HAA), cystathionine, cysteine, methylmalonic acid and
236 25-hydroxyvitamin D3. Plasma folate and cobalamin (vitamin B12) were measured by
237 microbiological assay, using a microtiter plate format on a robotic workstation employing a
238 chloramphenicol-resistant strain of *Lactobacillus casei* (folate) and a colistin sulphate-resistant
239 strain of *Lactobacillus leichmannii* (cobalamin)(Bevital, Bergen, Norway). Detailed quality
240 control data for all analytes has been described previously, documenting coefficients of
241 variation <10% (21). Values below the assay limit of detection were set to half the limit of
242 detection value. Any hemolysis was visually graded from zero to 4+; anthranilic acid, 3-
243 hydroxyanthranilic acid and 3-hydroxykynurenine values were set to missing for samples with
244 a hemolysis score ≥ 2 (approximately equivalent to Hb 250 mg/dL), and those for folate set to

245 missing for samples with 4+ hemolysis (approximately equivalent to Hb 1000 mg/dL). Each
246 analyte was checked for outliers (both statistically and clinically), and implausible values were
247 set to missing.

248

249 As functional markers of vitamin B6 status, we calculated the plasma 3'-hydroxykynurenine
250 ratio (HK ratio [HK:KA+AA+XA+HAA], a higher ratio reflecting effects of vitamin B6
251 insufficiency on tryptophan catabolism), along with the cystathionine/cysteine ratio (a higher
252 ratio reflecting effects of vitamin B6 insufficiency on transsulfuration pathway regulation)
253 (22). There is inconsistency in the literature regarding thresholds for vitamin deficiency or
254 insufficiency markers based on plasma measurements: for this study we used plasma folate
255 13.6 nmol/L to define “marginal folate status” (23); homocysteine ≥ 15 $\mu\text{mol/L}$ to define “high
256 plasma homocysteine” (24); riboflavin < 5 nmol/L (the lower limit of the reference range for
257 the laboratory) and ≤ 26.5 nmol/L (the change-point of plasma riboflavin with erythrocyte
258 glutathione reductase activation coefficient (25)) to define low riboflavin and “marginal
259 riboflavin status”, respectively; pyridoxal 5-phosphate < 20 nmol/L to define low B6 status;
260 cobalamin < 148 and < 221 pmol/L to define B12 “deficiency” and “depletion”, respectively
261 (26); and plasma 25-hydroxyvitamin D3 < 50 and < 75 nmol/L to define “deficiency” and
262 “insufficiency”, respectively (27).

263

264 *Statistics*

265 The sample size was based on the trial primary outcome of gestational glycemia, as described
266 previously (17). Following \log_e (natural logarithm) transformation where necessary,
267 standardization was applied to all values of each analyte (i.e. ~4902 samples) to derive standard
268 deviation scores (SDS) before being split into separate variables by time-point/visit; the

269 advantage of this approach is that for each analyte the effect sizes are comparable between
270 time-points.

271 For each of the vitamins and related vitamers and metabolites analyses focused on: i) describing
272 the longitudinal changes in maternal concentrations from preconception through pregnancy and
273 to 6 months post-delivery in the control group, ii) the pattern of longitudinal change in the
274 intervention group, and iii) differences in concentration and in sufficiency markers between the
275 control and intervention groups at different time-points, including differences in proportions
276 analyzed using chi-squared tests. Longitudinal plots are shown as means and 95% confidence
277 intervals (CI) in SDS by intervention group on y-axis and time-point/visit on x-axis, with
278 statistical significance considered when the 95%CI did not overlap (two-tailed $P < 0.05$).
279 Differences given in the text are statistically significant unless otherwise stated. Plots and
280 differences in SDS between time-points are based on all available data at each time-point unless
281 otherwise specified. Sensitivity analyses were used to determine whether differences between
282 time-points reflected differences between those who did and did not become pregnant
283 (resulting in differing numbers of participants with preconception, pregnancy and post-delivery
284 measurements), and linear and logistic regression analyses were used to ascertain whether the
285 patterns of longitudinal and control vs intervention group differences were robust to adjustment
286 for site and ethnicity (trial randomization stratification factors) and parity (not fully balanced
287 across control and intervention groups and potentially influential on status measurements).
288 Analyses were performed using Stata software v15.1 (StataCorp, College Station, TX, USA).

289

290 **Results**

291 Characteristics of the participants with preconception data ($n=1727$), and of those who had
292 baseline analyte data and were followed up at late pregnancy ($n=580$) are shown in Table 1.
293 Characteristics were balanced across the control and intervention groups, except for somewhat

294 more nulliparity among controls; characteristics for those followed up post-delivery (n=512)
295 were similar to those with preconception data.

296 Table 2 shows median and interquartile range values for the maternal plasma vitamins and
297 related vitamers/metabolites in their original units at each time-point for each of the control
298 and intervention groups, and Table 3 the percentages of participants below vitamin and
299 vitamer deficiency/insufficiency marker thresholds according to time-point and
300 control/intervention group. The longitudinal changes in maternal concentrations expressed in
301 SDS and proportions with marginal or low status, depletion, deficiency and insufficiency are
302 shown graphically in Figures 1-5. Among all participants at recruitment preconception,
303 significant proportions had marginal or low plasma status for folate (29.2% <13.6 nmol/L),
304 riboflavin (7.5% <5 nmol/L, 82.0% ≤26.5 nmol/L), vitamin B12 (9.1% <221 pmol/L) and
305 vitamin D (48.7% <50 nmol/L); only 1.3% had a low pyridoxal 5-phosphate (<20 nmol/L).

306 *Plasma folate and homocysteine*

307 In the control group (who received 400 µg/day folic acid, as in the intervention group), from
308 preconception baseline to 1-month after supplementation commencement mean maternal
309 plasma folate increased by 0.74 SDS, followed by a further 0.37 SDS increase in early
310 pregnancy, and then declined 0.45 SDS from early to late pregnancy and 0.85 SDS from late
311 pregnancy to 6-months post-delivery, resulting in a post-delivery concentration lower than at
312 preconception baseline (Figure 1a); marginal folate status (<13.6 nmol/L) was present in 28.1%
313 of control group participants at preconception baseline, falling to 4.1% 1-month after
314 supplementation commencement and 1.0% in early pregnancy, before rising to 6.1% in late
315 pregnancy and 31.8% 6-months post-delivery (Figure 1b). The intervention group showed a
316 similar longitudinal pattern for plasma folate.

317 Plasma homocysteine concentrations, an indicator of folate and B-vitamin deficiency, in the
318 control group decreased by 0.13 SDS from preconception baseline to 1-month after
319 supplementation commencement, followed by further 0.76 and 0.65 SDS falls in early and late
320 pregnancy, respectively, and then a 1.66 SDS increase 6-months post-delivery, resulting in
321 post-delivery concentration marginally higher than at recruitment (Figure 1c); a high plasma
322 homocysteine ≥ 15 $\mu\text{mol/L}$ was present in 0.9% of participants at preconception baseline,
323 falling to 0% in early pregnancy and late pregnancy, and 0.4% 6 months post-delivery. The
324 intervention group showed a similar longitudinal pattern, but plasma homocysteine
325 concentrations were 0.24, 0.41 and 0.40 SDS lower than in the control group 1-month after
326 supplementation commencement and in early and late pregnancy, respectively.

327

328 *Plasma riboflavin and flavin mononucleotide*

329 Among control group participants (taking a supplement without riboflavin), as expected plasma
330 riboflavin was similar at preconception baseline and 1-month after supplementation
331 commencement, then decreased by 0.24 SDS in early pregnancy, with a further 0.17 SDS
332 decrease in late pregnancy, followed by an increase of 0.43 SDS at 6-months post-delivery,
333 returning to levels similar to those at preconception (Figure 2a). Marginal riboflavin status
334 (≤ 26.5 nmol/L) was present in 81.1% of control participants at preconception baseline and
335 80.3% 1-month after supplementation commencement, increasing to 85.6% and 92.4% in early
336 and late pregnancy, respectively, before returning to 82.5% 6-months post-delivery
337 (Supplementary Figure 2). Low riboflavin status (< 5 nmol/L) in the control group showed a
338 similar longitudinal pattern at the expected lower prevalence (7.3%, 6.2%, 12.5%, 12.8% and
339 4.0%, across the five time-points)(Figure 2b). Compared with the control group, plasma
340 riboflavin concentrations in the intervention group 1-month after supplementation
341 commencement, in early pregnancy and in late pregnancy were higher (by 0.77, 0.76 and 0.65

342 SDS, respectively), with lower prevalences of marginal (56.1%, 66.9% and 81.9%,
343 respectively) and low (0.4%, 0.9% and 2.7%, respectively) riboflavin status.

344 Plasma flavin mononucleotide, a marker of riboflavin sufficiency, in the control group showed
345 a similar longitudinal pattern to plasma riboflavin but increased by 0.21 SDS from
346 preconception baseline to 1-month after supplementation commencement, before showing a
347 similar decline during pregnancy (Figure 2c). Plasma flavin mononucleotide concentrations
348 were 0.36, 0.47 and 0.33 SDS higher in the intervention vs the control group 1-month after
349 supplementation commencement, in early pregnancy and in late pregnancy, respectively.

350

351 *Plasma vitamin B6 and B6 insufficiency markers*

352 In the control group (taking a supplement without vitamin B6), plasma pyridoxal 5-phosphate
353 was similar at preconception baseline and 1-month after supplementation commencement, then
354 decreased by 0.25 SDS between 1-month after supplementation commencement and early
355 pregnancy, before a substantial further decrease of 1.11 SDS from early pregnancy to late
356 pregnancy, followed by a return to preconception concentrations 6-months post-delivery
357 (Figure 3a); preconception, low pyridoxal 5-phosphate (<20 nmol/L) was present in 0.8% of
358 participants at baseline and 0.1% 1-month after supplementation commencement, increasing
359 to 2.6% in early pregnancy and a steep rise to 54.2% in late pregnancy, before returning to
360 1.2% 6-months post-delivery (Figure 3b). Compared with the control group, the intervention
361 group had higher plasma pyridoxal 5-phosphate concentrations at 1-month after
362 supplementation commencement, and in early and late pregnancy, by 1.07, 0.95 and 0.84 SDS,
363 respectively.

364 Among control participants, the plasma HK ratio was unchanged from the preconception
365 baseline through 1-month after supplementation commencement and in early pregnancy, but
366 then rose sharply by 1.03 SDS between early and late pregnancy, reflecting reduced activity of

367 vitamin B6 dependent pathways; between late pregnancy and 6-months post-delivery the HK
368 ratio fell by 0.67 SDS, to a level that was higher than the preconception baseline (Figure 3c).
369 Compared with the control group, in the intervention group plasma HK ratio was lower at 1-
370 month after supplementation commencement, in early pregnancy and in late pregnancy, by
371 0.51, 0.63 and 0.29 SDS, respectively. In the control group, the plasma cystathionine/cysteine
372 ratio increased from preconception baseline to 1-month after supplementation commencement,
373 decreasing to a level slightly lower than baseline in early pregnancy, followed by a 1.36 SDS
374 rise between early and late pregnancy, and then a fall 6-months post-delivery to a level higher
375 than the preconception baseline (Supplementary Figure 2). Similar to the HK ratio, compared
376 with the control group, the plasma cystathionine/cysteine ratio was lower in the intervention
377 group 1-month after supplementation commencement, in early pregnancy and in late
378 pregnancy, by 0.35, 0.37 and 0.23 SDS, respectively.

379

380 *Plasma vitamin B12 and methylmalonic acid*

381 In the control group (taking a supplement without vitamin B12), plasma cobalamin was similar
382 at preconception baseline and 1-month after supplementation commencement, then decreased
383 by 0.41 SDS in early pregnancy, further decreased by 0.88 SDS in late pregnancy, then
384 returning to baseline preconception concentrations 6-months post-delivery (Figure 4a);
385 preconception, vitamin B12 deficiency (<148 pmol/L) was present in 0.6% of participants at
386 baseline and 1-month after supplementation commencement, increasing to 1.6% and 11.1% in
387 early and late pregnancy, respectively, before returning to 0.8% 6-months post-delivery
388 (Supplementary Figure 4). Vitamin B12 depletion (<221 pmol/L) in the control group showed
389 a similar longitudinal pattern at the expected higher prevalence (7.5%, 7.0%, 18.1%, 55.2%
390 and 12.4%, across the five time-points) (Figure 4b). Compared with the control group, in the
391 intervention group plasma cobalamin concentrations 1-month after supplementation

392 commencement, in early pregnancy and in late pregnancy were higher (by 0.55, 0.75 and 0.79
393 SDS, respectively), with lower prevalences of vitamin B12 deficiency (0%, 0.3% and 4.8%,
394 respectively), and of vitamin B12 depletion (2.4%, 3.7% and 16.7%, respectively). Notably,
395 plasma vitamin B12 was 0.3 SDS higher in the intervention group than the control group 6-
396 months post-delivery, with a lower prevalence of vitamin B12 depletion (5.4% vs 12.4%).
397 Plasma methylmalonic acid, a metabolic indicator of vitamin B12 insufficiency, in the control
398 group increased by 0.29 SDS from preconception baseline to 1-month after supplementation
399 commencement, then decreasing by 0.45 SDS in early pregnancy before increasing 0.39 SDS
400 in late pregnancy and staying at a similar level 6-months post-delivery, 0.31 SDS above the
401 original preconception baseline value (Figure 2c). Plasma methylmalonic acid concentrations
402 in the intervention group were similar to those in the control group 1-month after
403 supplementation commencement, but 0.21 and 0.49 SDS lower in early pregnancy and in late
404 pregnancy, respectively; 6-months post-delivery there was a 0.17 SDS lower concentration in
405 the intervention group (P=0.05).

406

407 *Plasma 25-hydroxyvitamin D*

408 In the control group, plasma 25-hydroxyvitamin D changed little from preconception baseline
409 to 1-month after supplementation commencement and early pregnancy, then increased by 0.28
410 SDS between early and late pregnancy, remaining similar to late pregnancy concentrations 6-
411 months post-delivery (Figure 5a). Vitamin D deficiency <50 nmol/L in the control group
412 showed a similar longitudinal pattern, with high prevalences at preconception baseline, 1-
413 month after supplementation commencement and in early pregnancy (47.7%, 47.5% and
414 43.0%, respectively), and rather lower prevalences in late pregnancy (35.1%) and 6-months
415 post-delivery (30.7%)(Figure 5b); vitamin D insufficiency <75 nmol/L showed a similar
416 longitudinal pattern at high prevalence levels (85.7%, 85.1%, 82.3%, 64.6%, and 70.5%, across

417 the five time-points)(Figure 5c). Compared with the control group, in the intervention group
418 plasma 25-hydroxyvitamin D concentrations 1-month after supplementation commencement,
419 in early pregnancy and in late pregnancy were higher (by 0.51, 0.63 and 0.89 SDS,
420 respectively), with prevalences of vitamin D deficiency (22.0%, 12.2% and 8.5%, respectively)
421 and insufficiency (78.2%, 65.7% and 27.3%, respectively) that were substantially lower than
422 the control group; 6-months post-delivery plasma 25-hydroxyvitamin D concentrations were
423 similar in the intervention and control groups (Figures 5b, 5c).

424

425 *Sensitivity analyses*

426 In sensitivity analyses of participants with complete preconception, pregnancy and post-
427 delivery data the patterns described above for each of the vitamins and vitamers/metabolites
428 were confirmed as little different, with no substantive differences from the analyses of all
429 participants with measurements at any time-point (Supplementary Table 1). Further sensitivity
430 analyses showed that the patterns of longitudinal and control vs intervention group differences
431 were robust to adjustment for site, ethnicity and parity.

432

433 **Discussion**

434 Among UK, Singapore and New Zealand women attempting to become pregnant in this multi-
435 center randomized controlled trial, significant proportions had marginal or low status of folate,
436 riboflavin, vitamin B12 and vitamin D at recruitment preconception, and a high proportion
437 developed markers of functional vitamin B6 deficiency in late pregnancy despite a small
438 proportion having a low vitamin B6 status preconception. Plasma concentrations for the above
439 vitamins, related vitamers and metabolic insufficiency markers showed differing patterns of
440 change from preconception to pregnancy and 6-months post-delivery. A formulation enriched
441 with micronutrients in amounts available in over-the-counter supplements commenced

442 preconception and continued throughout pregnancy substantially increased plasma folate,
443 riboflavin and vitamins B6, B12 and D concentrations and reduced the prevalence of their
444 deficiency/depletion markers before and during pregnancy, with a persisting benefit of higher
445 plasma vitamin B12 to 6-months post-delivery.

446 As routinely recommended for preconception and pregnancy, supplementation with 400 µg
447 folic acid daily in both the control and intervention groups raised plasma folate by >1 SDS
448 from baseline to early pregnancy and reduced the prevalence of marginal folate status from
449 28.1% at baseline to 1.0% in early pregnancy. Our findings show that even with 400 µg, the
450 lowest commonly marketed dose, there are appreciable improvements in folate status after 1
451 month and continued improvement into pregnancy. Plasma homocysteine in the control group
452 fell substantially from preconception baseline to early pregnancy and again from early to late
453 pregnancy, with greater falls in plasma homocysteine in the intervention group taking a
454 supplement containing other micronutrients. While some have proposed that vitamin B6,
455 riboflavin and zinc might reduce homocysteine, there are data pointing away from this (28, 29).
456 One previous review concluded that dietary folic acid reduced homocysteine levels by 25%
457 and vitamin B12 produced an additional 7% reduction in blood homocysteine levels, whereas
458 vitamin B6 had no significant additive effect (30). Our findings support effects of both the folic
459 acid and the other micronutrients in the intervention group acting to improve 1-carbon status
460 and reduce plasma homocysteine, with potential benefit for pregnancy and offspring outcomes
461 (31).

462

463 In the control group, plasma riboflavin and flavin mononucleotide showed modest falls from
464 preconception to early pregnancy, and again from early to late pregnancy. We considered
465 measuring the gold standard erythrocyte glutathione reductase activation coefficient as a
466 specific riboflavin deficiency marker, but resource to support this could not be secured.

467 Detailed studies have identified ≤ 26.5 nmol/L as the change-point of plasma riboflavin below
468 which the erythrocyte glutathione reductase activation coefficient becomes elevated (25).
469 Using this 26.5 nmol/L threshold, 82.0% of participants had a “marginal riboflavin status” at
470 baseline, with 7.5% having a riboflavin concentration < 5 nmol/L. In the intervention group,
471 supplementation with 1.8 mg/day riboflavin, as in many prenatal supplements, substantially
472 raised plasma riboflavin and reduced the prevalences of marginal and low riboflavin status
473 before and during pregnancy. The implications of marginal or low riboflavin status before and
474 during pregnancy have rarely been studied, but in a large cohort of pregnant women in Ireland
475 and Northern Ireland biomarker analysis showed that 68% had low or deficient riboflavin
476 status, which was associated with a higher risk of anaemia during pregnancy (32).

477 Plasma pyridoxal 5-phosphate in the control group showed a modest fall from preconception
478 to early pregnancy, but then a substantial fall from early to late pregnancy, accompanied by a
479 sharp rise in plasma HK and cystathionine:cysteine ratios, reflecting impairment of vitamin B6
480 dependent pathways in late pregnancy. For vitamin B6, pyridoxal 5-phosphate is the most
481 commonly used status marker (33); the HK ratio, composed of HK and the four kynurenines
482 that are products of the pyridoxal 5-phosphate dependent enzymes, kynurenine transaminase
483 and kynureninase has been developed as a marker of tryptophan catabolism regulation by
484 vitamin B6 that rises in B6 deficiency (33, 34). Evaluation has also found that the ratio of
485 cystathionine:cysteine (transsulfuration pathway regulation) has merit as a B6 intake marker,
486 while being more subject to other influences than the HK ratio (22). The marked late gestation
487 rises in HK ratio is consistent with evidence of kynurenine pathway enzyme inhibition by the
488 more than 10-fold physiological increase in estrogen with advancing gestation from mid to late
489 pregnancy (35, 36). This late gestation inhibition of the kynurenine pathway may be partly
490 physiological but nonetheless has implications for B6 nutrient supply to the fetus and potential
491 impacts on later offspring health. Notably, there is increasing evidence linking childhood

492 kynurenine pathway perturbations with metabolic health risk (37). In our study, the
493 intervention, providing 2.6 mg vitamin B6 daily, substantially increased plasma pyridoxal 5-
494 phosphate levels and lowered the plasma HK ratio in late pregnancy, with a lowering of the
495 cystathionine:cysteine ratio also supporting a lesser impairment of vitamin B6 dependent
496 pathways. While the US Institute of Medicine Recommended Dietary Allowance for vitamin
497 B6 in pregnancy is 1.9 mg/day (38), European Community recommendations for pregnancy
498 are that vitamin B6 supplements of 2.5-4 mg/day are required to maintain the plasma
499 concentration of vitamin B6 at pre-pregnancy levels (39).

500

501 In the control group plasma vitamin B12 showed modest falls from preconception to early
502 pregnancy, and a larger fall from early to late pregnancy, accompanied by increases in the late
503 pregnancy prevalences of vitamin B12 deficiency and depletion (11.1% and 55.2%,
504 respectively) and a rise in plasma methylmalonic acid as a marker of vitamin B12 insufficiency;
505 this is in keeping with previous reports of raised vitamin B12 deficiency markers in late
506 pregnancy (40). Supplementation with 5.2 µg/day vitamin B12 led to higher plasma cobalamin
507 and lower methylmalonic acid during pregnancy in the intervention group. Recommended
508 daily allowance amounts for vitamin B12 vary internationally. Meta-analysis of randomised
509 trials in non-pregnant individuals concluded that a doubling of vitamin B12 intake increases
510 vitamin B12 concentrations by 14%, with a consistent benefit of amounts similar to the 5.2
511 µg/day used in this trial (41), whereas smaller amounts are less consistent in their effect on B12
512 status (42). Systematic review has linked lower maternal vitamin B12 status with a variety of
513 adverse pregnancy outcomes, including a higher risk of neural tube defects, recurrent
514 pregnancy losses, gestational diabetes, pre-eclampsia, and lower birth weight (43), and meta-
515 analysis has shown that lower plasma concentrations associate with a higher risk of preterm
516 delivery (44). Lower maternal concentrations are also associated with adverse cardiometabolic

517 and neurocognitive outcomes in the offspring (43, 45). While randomised trials of vitamin B12
518 supplementation in pregnancy have been inconclusive in relation to an effect on birth weight
519 they support a beneficial effect on offspring neurocognitive development (43). In our study
520 maternal plasma cobalamin was still higher in the intervention group post-delivery, 6-months
521 after discontinuation of supplementation, most likely reflecting repletion of hepatic stores. It is
522 likely this would increase breast milk vitamin B12 supply to the infant given the strong
523 correlation between maternal plasma and breast milk concentrations (46). This is potentially of
524 importance as post-delivery maternal vitamin B12 supplementation with the low doses found
525 in most over-the-counter supplements (1 to 10 µg/day) are widely thought to result in only
526 modest increases in human milk levels (47).

527 Plasma 25-hydroxyvitamin D in the control group taking a supplement without vitamin D was
528 remarkably unchanged from preconception baseline to early pregnancy, then increased
529 modestly between early and late pregnancy, with high prevalences of vitamin D deficiency and
530 insufficiency at baseline preconception (47.7% and 85.7%, respectively) and through
531 pregnancy. Supplementation with 10 µg of vitamin D in the intervention group led to
532 progressive increases in plasma 25-hydroxyvitamin D and a substantial reduction in the
533 prevalences of vitamin D deficiency and insufficiency during pregnancy (e.g. 8.5% and 27.3%
534 in late pregnancy, respectively vs 35.1% and 64.6% in the control group). The dose of vitamin
535 D recommended for routine use in pregnancy varies internationally, with some advocating 100
536 µg daily or higher (48), while the World Health Organization/Food and Agriculture
537 Organization of the United Nations recommends 5 µg daily (49); in the UK it is recommended
538 that pregnant women should consider taking a supplement containing 10 µg between
539 September and March (4). In the MAVIDOS randomised trial supplementation 25 µg of
540 vitamin D daily from 14 weeks gestation until delivery lowered the incidence of infantile atopic
541 eczema (5) and increased childhood areal bone mineral density in the offspring (6). Vitamin D

542 is stored in adipose tissue and our trial suggests that low dose (10 µg) supplementation over a
543 long period starting preconception can support improved gestational vitamin D status.

544 The finding of significant prevalences of vitamin insufficiencies in women living in high
545 income countries who are attempting to become pregnant is a serious concern. This is
546 particularly the case given increasing advocacy to reduce meat and dairy intakes to achieve
547 “net-zero” carbon emissions, as these foods are micronutrient dense and support nutritional
548 adequacy (50, 51). The high prevalence of vitamin insufficiencies and increasing move towards
549 plant-based diets, which lack vitamin B12 and are low in other micronutrients, is likely to result
550 in more women resorting to over-the-counter supplements. Currently, over-the-counter
551 supplements intended for preconception and pregnancy show considerable variation in which
552 micronutrients they include and in the amounts of those included. As the amounts incorporated
553 into the intervention supplement were comparable to those available in over-the-counter
554 supplements, the effects we report on vitamin status before and during pregnancy are
555 generalizable and fill an important gap in the literature.

556 To date changes in vitamin status from preconception to early and late pregnancy and
557 postpartum have largely been inferred from cross-sectional data, with lower concentrations
558 during pregnancy often ascribed to plasma volume expansion (12, 13). Our findings show
559 however that the magnitude and pattern of change varies between nutrients, inconsistent with
560 an effect wholly due to physiological hemodilution, and that markers of functional B6 (HK
561 ratio) and B12 (methylmalonic acid) insufficiency increase during pregnancy. Variations
562 between individual vitamins in maternal metabolism, intake, renal loss and fetoplacental
563 demands during pregnancy may all contribute to these varying patterns. Our randomized trial
564 has shown for the first time that preconception and pregnancy supplementation including
565 riboflavin, folic acid and vitamins B6, B12 and D in amounts available in over-the-counter

566 supplements can contribute to the reduction in vitamin insufficiencies during the
567 preconception, pregnancy and lactational periods. The potential benefits for pregnancy
568 outcome and offspring health remain to be characterized.

569 *Strengths and Limitations*

570 Strengths of our study include longitudinal plasma samples from preconception through
571 pregnancy to 6-months post-delivery, an interventional component, a relatively large sample
572 size and inclusion of multiple ethnic groups. The robust conduct of this double-blind RCT,
573 which included prospectively collected data and minimization of residual confounding through
574 randomization, with external oversight by an independent data monitoring and trial steering
575 committee, is a strength. Over 96% of women showed good adherence defined *a priori* as
576 supplement intake greater than 60% averaged from recruitment to delivery. Even though
577 recruitment occurred across three different countries with inclusion of multiple ethnicities,
578 generalizability to the global population is limited by the lack of African and Amerindian
579 women in particular. The recruited population were generally healthy and well-nourished, yet
580 evidence recognized as indicating micronutrient insufficiency was widespread; whether some
581 changes represent a normal physiological change in pregnancy or a true insufficiency awaits
582 characterization of relations with pregnancy and offspring outcomes. Another strength is the
583 use of an accredited clinical laboratory for analyses of clinical biomarkers. In this study the
584 entire sample set was analyzed for tryptophan and kynurenine metabolites in a single laboratory
585 by a targeted LC-MS/MS method including authentic labelled internal standards for each
586 analyte providing high analytical precision. The analyses were carried out in continuous sample
587 batches, with small variability between each batch. Finally, standardized scores were used in
588 the regression models so that the strength of associations were comparable.

589 *Conclusions*

590 Significant proportions of preconception women living in high income countries have marginal
591 or low status of folate, riboflavin, vitamin B12 and vitamin D, and many develop markers of
592 vitamin B6 deficiency in late pregnancy. In the absence of the intervention supplement,
593 maternal plasma concentrations show differing longitudinal patterns between vitamins from
594 preconception to early and late pregnancy, inconsistent with plasma volume expansion wholly
595 accounting for lower gestational concentrations, and markers of functional B6 and B12
596 insufficiency increase during pregnancy. Preconception and pregnancy supplementation in
597 amounts available in over-the-counter supplements substantially reduced the prevalence of
598 deficiency/depletion markers before and during pregnancy, and a higher maternal plasma
599 vitamin B12 was maintained during the recommended lactational period. In the setting of
600 increasing advocacy for more diets that are likely to be less nutrient dense, the findings suggest
601 a need to reappraise dietary recommendations for preconception and pregnancy and to consider
602 further the role of multiple micronutrient supplements in women living in higher income
603 countries.

604 **Author Contributions:**

605 **Keith M Godfrey:** Conceptualization, Methodology, Investigation, Writing review and
606 editing, Supervision, Project administration, Funding acquisition. **Philip Titcombe:**
607 Validation, Analysis, Data curation, Writing original draft, Visualization; **Sarah El-Heis:**
608 Methodology, Investigation, Writing review and editing; **Benjamin Albert:** Investigation,
609 Writing review and editing; **Elizabeth Tham:** Investigation, Writing review and editing;
610 **Sheila Barton:** Methodology, Validation, Analysis, Resources, Data curation, Writing review
611 and editing; **Timothy Kenealy:** Investigation, Writing review and editing; **Heidi Nield:**
612 Resources, Project administration, Writing review and editing; **Mary Foong-Fong Chong:**
613 Writing review and editing; **Yap Seng Chong:** Conceptualization, Methodology, Writing
614 review and editing, Supervision, Funding acquisition; **Shiao-Yng Chan:** Conceptualization,

615 Methodology, Validation, Analysis, Investigation, Writing original draft, Visualization,
616 Supervision, Project administration; **Wayne Cutfield:** Methodology, Investigation, Writing
617 review and editing, Supervision, Project administration;

618

619 **Acknowledgements**

620 The NiPPeR Study Group authors for the Medline citation comprises the following:

621 *National University Hospital, Singapore:* Julie Ann Guiao Castro (julie_castro@nuhs.edu.sg),

622 Wendy Sim (sin_nie_sim@nuhs.edu.sg), Gladys Woon (gladys_woon@nuhs.edu.sg), Hsin

623 Fang Chang (hsin_fang_chang@nuhs.edu.sg)

624 *Singapore Institute for Clinical Sciences, Agency for Science, Technology and Research,*

625 *Singapore:* Gernalia Satianegara (gernalia_satianegara@sics.a-star.edu.sg), Karen ML Tan

626 (karen_tan@sics.a-star.edu.sg), Vicky Tay (Vicky_tay@sics.a-star.edu.sg), Jui-Tsung Wong

627 (csd3589@yahoo.com)

628 *MRC Lifecourse Epidemiology Centre, University of Southampton, UK:* Paula Costello

629 (pc@mrc.soton.ac.uk), Vanessa Cox (vac@mrc.soton.ac.uk), Nicholas C Harvey

630 (neh@mrc.soton.ac.uk), Sevasti Galani (sevasti.galani@ucl.ac.uk)

631 *Liggins Institute, University of Auckland, New Zealand:* Mary Cavanagh

632 (m.cavanagh@auckland.ac.nz), Judith Hammond (j.hammond@auckland.ac.nz), Mark H.

633 Vickers (m.vickers@auckland.ac.nz)

634 *Soci t  Des Produits Nestl  S.A.:* Aristeia Binea (aristeia.binia@rdls.nestle.com), Irma Silva-

635 Zolezzi(Irma.SilvaZolezzi@nestle.com), Chiara Nembrini

636 (Chiara.Nembrini@rdls.nestle.com)

637 We thank the participants and their families for their enthusiastic involvement in the study; the

638 study research staff and hospital clinical staff at participating centers, and operational support

639 staff for their contributions to the trial; and the members of the Independent Data Monitoring
640 and Safety Committee for their contributions and oversight of the conduct of the trial.

641 **Conflicts of Interest**

642 SC, PNB, YSC, WC and KG report grants from Société Des Produits Nestlé S.A. during the
643 conduct of the study, and are co-inventors on patent filings by Nestlé S.A. relating to the
644 NiPPeR intervention or its components. SC, SB, PT, WC and KG are part of an academic
645 consortium that has received grants from Abbott Nutrition, Nestlé S.A., Danone and
646 Benevolent AI Bio Ltd outside the submitted work. SC has received reimbursement and
647 honoraria into her research funds from Nestlé S.A. for speaking at a conference. KG has
648 received reimbursement for speaking at conferences sponsored by companies selling
649 nutritional products. All other authors declare no competing interests.

650 References

- 651 1. Keats EC, Haider BA, Tam E, Bhutta ZA. Multiple-micronutrient supplementation for
652 women during pregnancy. The Cochrane database of systematic reviews. 2019;3(3):Cd004905.
- 653 2. Prevention of neural tube defects: results of the Medical Research Council Vitamin
654 Study. MRC Vitamin Study Research Group. Lancet (London, England). 1991;338(8760):131-
655 7.
- 656 3. Cooper C, Harvey NC, Bishop NJ, Kennedy S, Papageorgiou AT, Schoenmakers I, et
657 al. Maternal gestational vitamin D supplementation and offspring bone health (MAVIDOS): a
658 multicentre, double-blind, randomised placebo-controlled trial. The lancet Diabetes &
659 endocrinology. 2016;4(5):393-402.
- 660 4. NHS. [Available from: [https://www.nhs.uk/pregnancy/keeping-well/vitamins-
661 supplements-and-nutrition/](https://www.nhs.uk/pregnancy/keeping-well/vitamins-supplements-and-nutrition/).
- 662 5. El-Heis S, D'Angelo S, Curtis EM, Healy E, Moon RJ, Crozier SR, et al. Maternal
663 antenatal vitamin D supplementation and offspring risk of atopic eczema in the first 4 years of
664 life: evidence from a randomized controlled trial. The British journal of dermatology.
665 2022;187(5):659-66.
- 666 6. Curtis EM, Moon RJ, D'Angelo S, Crozier SR, Bishop NJ, Gopal-Kothandapani JS, et
667 al. Pregnancy Vitamin D Supplementation and Childhood Bone Mass at Age 4 Years: Findings
668 From the Maternal Vitamin D Osteoporosis Study (MAVIDOS) Randomized Controlled Trial.
669 JBMR plus. 2022;6(7):e10651.
- 670 7. Fleming TP, Watkins AJ, Velazquez MA, Mathers JC, Prentice AM, Stephenson J, et
671 al. Origins of lifetime health around the time of conception: causes and consequences. Lancet
672 (London, England). 2018;391(10132):1842-52.
- 673 8. Stephenson J, Heslehurst N, Hall J, Schoenaker D, Hutchinson J, Cade JE, et al. Before
674 the beginning: nutrition and lifestyle in the preconception period and its importance for future
675 health. Lancet (London, England). 2018;391(10132):1830-41.
- 676 9. Ronnenberg AG, Goldman MB, Chen D, Aitken IW, Willett WC, Selhub J, et al.
677 Preconception homocysteine and B vitamin status and birth outcomes in Chinese women. Am
678 J Clin Nutr. 2002;76(6):1385-91.
- 679 10. Robinson SM, Crozier SR, Miles EA, Gale CR, Calder PC, Cooper C, et al.
680 Preconception Maternal Iodine Status Is Positively Associated with IQ but Not with Measures
681 of Executive Function in Childhood. The Journal of nutrition. 2018;148(6):959-66.
- 682 11. Sukumar N, Adaikalakoteswari A, Venkataraman H, Maheswaran H, Saravanan P.
683 Vitamin B₁₂ status in women of childbearing age in the UK and its
684 relationship with national nutrient intake guidelines: results from two National Diet and
685 Nutrition Surveys. BMJ Open. 2016;6(8):e011247.
- 686 12. Aguree S, Gernand AD. Plasma volume expansion across healthy pregnancy: a
687 systematic review and meta-analysis of longitudinal studies. BMC pregnancy and childbirth.
688 2019;19(1):508.
- 689 13. Hall MH, Pirani BB, Campbell D. The cause of the fall in serum folate in normal
690 pregnancy. British journal of obstetrics and gynaecology. 1976;83(2):132-6.
- 691 14. Sahariah SA, Gandhi M, Chopra H, Kehoe SH, Johnson MJ, di Gravio C, et al. Body
692 Composition and Cardiometabolic Risk Markers in Children of Women who Took Part in a
693 Randomized Controlled Trial of a Preconceptional Nutritional Intervention in Mumbai, India.
694 The Journal of nutrition. 2022;152(4):1070-81.
- 695 15. D'Souza N, Behere RV, Patni B, Deshpande M, Bhat D, Bhalerao A, et al. Pre-
696 conceptional Maternal Vitamin B12 Supplementation Improves Offspring Neurodevelopment
697 at 2 Years of Age: PRIYA Trial. Frontiers in pediatrics. 2021;9:755977.

- 698 16. Godfrey KM, Cutfield W, Chan SY, Baker PN, Chong YS, NiPPeR Study Group.
699 Nutritional Intervention Preconception and During Pregnancy to Maintain Healthy Glucose
700 Metabolism and Offspring Health ("NiPPeR"): study protocol for a randomised controlled trial.
701 *Trials*. 2017;18(1):131.
- 702 17. Godfrey KM, Barton SJ, El-Heis S, Kenealy T, Nield H, Baker PN, et al. Myo-Inositol,
703 Probiotics, and Micronutrient Supplementation From Preconception for Glycemia in
704 Pregnancy: NiPPeR International Multicenter Double-Blind Randomized Controlled Trial.
705 *Diabetes care*. 2021;44(5):1091-9.
- 706 18. Zhang H, Lv Y, Li Z, Sun L, Guo W. The efficacy of myo-inositol supplementation to
707 prevent gestational diabetes onset: a meta-analysis of randomized controlled trials. *The journal*
708 *of maternal-fetal & neonatal medicine : the official journal of the European Association of*
709 *Perinatal Medicine, the Federation of Asia and Oceania Perinatal Societies, the International*
710 *Society of Perinatal Obstet*. 2019;32(13):2249-55.
- 711 19. Laitinen K, Poussa T, Isolauri E. Probiotics and dietary counselling contribute to
712 glucose regulation during and after pregnancy: a randomised controlled trial. *The British*
713 *journal of nutrition*. 2009;101(11):1679-87.
- 714 20. Midttun Ø, Hustad S, Ueland PM. Quantitative profiling of biomarkers related to B-
715 vitamin status, tryptophan metabolism and inflammation in human plasma by liquid
716 chromatography/tandem mass spectrometry. *Rapid communications in mass spectrometry :*
717 *RCM*. 2009;23(9):1371-9.
- 718 21. Ulvik A, McCann A, Midttun Ø, Meyer K, Godfrey KM, Ueland PM. Quantifying
719 Precision Loss in Targeted Metabolomics Based on Mass Spectrometry and Nonmatching
720 Internal Standards. *Analytical chemistry*. 2021;93(21):7616-24.
- 721 22. Clasen JL, Heath AK, Van Puyvelde H, Huybrechts I, Park JY, Ferrari P, et al. A
722 comparison of complementary measures of vitamin B6 status, function, and metabolism in the
723 European Prospective Investigation into Cancer and Nutrition (EPIC) study. *Am J Clin Nutr*.
724 2021;114(1):338-47.
- 725 23. Oner N, Vatansever U, Karasalihoğlu S, Ekuklu G, Celtik C, Biner B. The prevalence
726 of folic acid deficiency among adolescent girls living in Edirne, Turkey. *The Journal of*
727 *adolescent health : official publication of the Society for Adolescent Medicine*.
728 2006;38(5):599-606.
- 729 24. Moretti R, Caruso P. The Controversial Role of Homocysteine in Neurology: From
730 Labs to Clinical Practice. *International journal of molecular sciences*. 2019;20(1).
- 731 25. Tan A, Zubair M, Ho C-I, McAnena L, McNulty H, Ward M, et al. Plasma riboflavin
732 concentration as novel indicator for vitamin-B2 status assessment: suggested cutoffs and its
733 association with vitamin-B6 status in women. *Proceedings of the Nutrition Society*.
734 2020;79(OCE2):E658.
- 735 26. Simpson JL, Bailey LB, Pietrzik K, Shane B, Holzgreve W. Micronutrients and women
736 of reproductive potential: required dietary intake and consequences of dietary deficiency or
737 excess. Part I--Folate, Vitamin B12, Vitamin B6. *The journal of maternal-fetal & neonatal*
738 *medicine : the official journal of the European Association of Perinatal Medicine, the*
739 *Federation of Asia and Oceania Perinatal Societies, the International Society of Perinatal*
740 *Obstet*. 2010;23(12):1323-43.
- 741 27. Loo EXL, Tham EH, Phang KW, Goh A, Teoh OH, Chong YS, et al. Associations
742 between maternal vitamin D levels during pregnancy and allergic outcomes in the offspring in
743 the first 5 years of life. *Pediatric allergy and immunology : official publication of the European*
744 *Society of Pediatric Allergy and Immunology*. 2019;30(1):117-22.
- 745 28. Ducker GS, Rabinowitz JD. One-Carbon Metabolism in Health and Disease. *Cell*
746 *metabolism*. 2017;25(1):27-42.

- 747 29. Ducros V, Andriollo-Sanchez M, Arnaud J, Meunier N, Laporte F, Hininger-Favier I,
748 et al. Zinc supplementation does not alter plasma homocysteine, vitamin B12 and red blood
749 cell folate concentrations in French elderly subjects. *Journal of trace elements in medicine and*
750 *biology : organ of the Society for Minerals and Trace Elements (GMS)*. 2009;23(1):15-20.
- 751 30. Clarke R, Armitage J. Vitamin supplements and cardiovascular risk: review of the
752 randomized trials of homocysteine-lowering vitamin supplements. *Seminars in thrombosis and*
753 *hemostasis*. 2000;26(3):341-8.
- 754 31. Rojas-Gómez A, Solé-Navais P, Cavallé-Busquets P, Ormosa-Martin G, Grifoll C,
755 Ramos-Rodriguez C, et al. Pregnancy homocysteine and cobalamin status predict childhood
756 metabolic health in the offspring. *Pediatric research*. 2022.
- 757 32. Duffy B, Pentieva K, Ward M, Psara E, O'Sullivan E, Horrigan G, et al. Impact of
758 riboflavin status on haemoglobin and risk of anaemia in pregnancy. *Proceedings of the*
759 *Nutrition Society*. 2021;80(OCE1):E45.
- 760 33. Ueland PM, Ulvik A, Rios-Avila L, Midttun Ø, Gregory JF. Direct and Functional
761 Biomarkers of Vitamin B6 Status. *Annual review of nutrition*. 2015;35:33-70.
- 762 34. Ulvik A, Midttun Ø, McCann A, Meyer K, Tell G, Nygård O, et al. Tryptophan
763 catabolites as metabolic markers of vitamin B-6 status evaluated in cohorts of healthy adults
764 and cardiovascular patients. *Am J Clin Nutr*. 2020;111(1):178-86.
- 765 35. Jayawickrama GS, Nematollahi A, Sun G, Gorrell MD, Church WB. Inhibition of
766 human kynurenine aminotransferase isozymes by estrogen and its derivatives. *Sci Rep*.
767 2017;7(1):17559.
- 768 36. Abbassi-Ghanavati M, Greer LG, Cunningham FG. Pregnancy and laboratory studies:
769 a reference table for clinicians. *Obstetrics and gynecology*. 2009;114(6):1326-31.
- 770 37. Tan KM, Tint MT, Kothandaraman N, Yap F, Godfrey KM, Lee YS, et al. Association
771 of plasma kynurenine pathway metabolite concentrations with metabolic health risk in
772 prepubertal Asian children. *International journal of obesity (2005)*. 2022;46(6):1128-37.
- 773 38. Institute of Medicine Standing Committee on the Scientific Evaluation of Dietary
774 Reference I, its Panel on Folate OBV, Choline. *The National Academies Collection: Reports*
775 *funded by National Institutes of Health. Dietary Reference Intakes for Thiamin, Riboflavin,*
776 *Niacin, Vitamin B(6), Folate, Vitamin B(12), Pantothenic Acid, Biotin, and Choline.*
777 *Washington (DC): National Academies Press (US)*
778 *Copyright © 1998, National Academy of Sciences.; 1998.*
- 779 39. Proposed nutrient and energy intakes for the European community: a report of the
780 Scientific Committee for Food of the European community. *Nutrition reviews*.
781 1993;51(7):209-12.
- 782 40. Greibe E, Andreassen BH, Lildballe DL, Morkbak AL, Hvas AM, Nexø E. Uptake of
783 cobalamin and markers of cobalamin status: a longitudinal study of healthy pregnant women.
784 *Clinical chemistry and laboratory medicine*. 2011;49(11):1877-82.
- 785 41. Dullemeijer C, Souverein OW, Doets EL, van der Voet H, van Wijngaarden JP, de Boer
786 WJ, et al. Systematic review with dose-response meta-analyses between vitamin B-12 intake
787 and European Micronutrient Recommendations Aligned's prioritized biomarkers of vitamin B-
788 12 including randomized controlled trials and observational studies in adults and elderly
789 persons. *Am J Clin Nutr*. 2013;97(2):390-402.
- 790 42. Sanchez H, Albala C, Lera L, Dangour AD, Uauy R. Effectiveness of the National
791 Program of Complementary Feeding for older adults in Chile on vitamin B12 status in older
792 adults; secondary outcome analysis from the CENEX Study (ISRCTN48153354). *Nutrition*
793 *journal*. 2013;12:124.
- 794 43. Behere RV, Deshmukh AS, Oti S, Gupte MD, Yajnik CS. Maternal Vitamin B12
795 Status During Pregnancy and Its Association With Outcomes of Pregnancy and Health of the

- 796 Offspring: A Systematic Review and Implications for Policy in India. *Frontiers in*
797 *endocrinology*. 2021;12:619176.
- 798 44. Rogne T, Tielemans MJ, Chong MF, Yajnik CS, Krishnaveni GV, Poston L, et al.
799 Associations of Maternal Vitamin B12 Concentration in Pregnancy With the Risks of Preterm
800 Birth and Low Birth Weight: A Systematic Review and Meta-Analysis of Individual
801 Participant Data. *American journal of epidemiology*. 2017;185(3):212-23.
- 802 45. Lai JS, Mohamad Ayob MN, Cai S, Quah PL, Gluckman PD, Shek LP, et al. Maternal
803 plasma vitamin B12 concentrations during pregnancy and infant cognitive outcomes at 2 years
804 of age. *The British journal of nutrition*. 2019;121(11):1303-12.
- 805 46. Bae S, West AA, Yan J, Jiang X, Perry CA, Malysheva O, et al. Vitamin B-12 Status
806 Differs among Pregnant, Lactating, and Control Women with Equivalent Nutrient Intakes. *The*
807 *Journal of nutrition*. 2015;145(7):1507-14.
- 808 47. Allen LH, Hampel D, Shahab-Ferdows S, York ER, Adair LS, Flax VL, et al.
809 Antiretroviral therapy provided to HIV-infected Malawian women in a randomized trial
810 diminishes the positive effects of lipid-based nutrient supplements on breast-milk B vitamins.
811 *Am J Clin Nutr*. 2015;102(6):1468-74.
- 812 48. Pérez-López FR, Pilz S, Chedraui P. Vitamin D supplementation during pregnancy: an
813 overview. *Current Opinion in Obstetrics and Gynecology*. 2020;32(5):316-21.
- 814 49. Organization WH. Food and agriculture organization of the United Nations. Vitamin
815 and mineral requirements in human nutrition. 2004;2:17-299.
- 816 50. Neufingerl N, Eilander A. Nutrient Intake and Status in Adults Consuming Plant-Based
817 Diets Compared to Meat-Eaters: A Systematic Review. *Nutrients*. 2021;14(1).
- 818 51. Hobbs DA, Durrant C, Elliott J, Givens DI, Lovegrove JA. Diets containing the highest
819 levels of dairy products are associated with greater eutrophication potential but higher nutrient
820 intakes and lower financial cost in the United Kingdom. *European journal of nutrition*.
821 2020;59(3):895-908.

823 **Table 1. Participant characteristics**

Characteristic		Preconception		Baseline and late pregnancy ⁺	
		Control (n=857)	Intervention (n=870)	Control (n=287)	Intervention (n=293)
<i>Sociodemographic</i>					
Study site	UK	229 (26.7%)	232 (26.7%)	92 (32.1%)	97 (33.1%)
	Singapore	328 (38.3%)	332 (38.2%)	82 (28.6%)	84 (28.7%)
	New Zealand	300 (35.0%)	306 (35.2%)	113 (39.4%)	112 (38.2%)
Age, years	Mean (SD)	30.6 (3.7)	30.6 (3.7)	30.2 (3.3)	30.5 (3.4)
Ethnicity	White	396 (46.2%)	413 (47.5%)	165 (57.5%)	179 (61.1%)
	Chinese	220 (25.7%)	238 (27.4%)	73 (25.4%)	72 (24.6%)
	South Asian	60 (7.0%)	61 (7.0%)	15 (5.2%)	15 (5.1%)
	Malay	85 (9.9%)	80 (9.2%)	12 (4.2%)	11 (3.8%)
	Other	96 (11.2%)	78 (9.0%)	22 (7.7%)	16 (5.5%)
Household income [#]	Low income	74 (9.3%)	76 (9.4%)	11 (4.0%)	12 (4.3%)
	Middle income	344 (43.2%)	354 (43.7%)	114 (41.2%)	114 (40.9%)
	High income	378 (47.5%)	380 (46.9%)	152 (54.9%)	153 (54.8%)
<i>Gynecological</i>					
Parity	Nulliparous	593 (69.2%)	578 (66.4%)	196 (68.3%)	169 (57.7%)
	Parous	264 (30.8%)	292 (33.6%)	91 (31.7%)	124 (42.3%)
<i>Lifestyle</i>					
Alcohol intake (per week)	None	271 (31.6%)	265 (30.5%)	61 (21.3%)	65 (22.2%)
	>0 to ≤2.5 units	312 (36.4%)	301 (34.6%)	115 (40.1%)	109 (37.2%)
	>2.5 units	274 (32.0%)	304 (34.9%)	111 (38.7%)	119 (40.6%)
Smoking status	Never	664 (77.7%)	662 (76.3%)	225 (78.7%)	237 (80.9%)
	Previous	131 (15.3%)	136 (15.7%)	49 (17.1%)	44 (15.0%)
	Active	60 (7.0%)	70 (8.1%)	12 (4.2%)	12 (4.1%)
Instances of moderate /vigorous physical activity in past 7 days	Median (IQR)	3 (2, 5)	3 (1, 5)	4 (2, 6)	3 (2, 5)
Body mass index (BMI) category ^{##}	Not overweight or obese	400 (46.7%)	432 (49.8%)	158 (55.1%)	163 (55.8%)
	Overweight	240 (28.0%)	224 (25.8%)	69 (24.0%)	89 (30.5%)
	Obese	216 (25.2%)	212 (24.4%)	60 (20.9%)	40 (13.7%)
Days between preconception baseline and post-supplementation sampling	Median (IQR)	28 (23, 31)	28 (23, 32)	27 (22, 31)	28 (23, 31)

824 Data presented as number (%) unless otherwise stated. Sample sizes do not always equal to
825 857/251 for control group and 870/261 for intervention group due to missing values; ⁺ based
826 on all available data for individuals with any analyte at both baseline and late pregnancy
827 [#]Low 1st-3rd decile, Middle 4th-7th decile, High 8th-10th decile; ^{##}BMI categories - Not
828 overweight or obese, Overweight and Obese <25, 25-<30 and ≥30 kg/m², respectively
829 Abbreviations: IQR, interquartile range; SD, standard deviation

830 **Table 2: Median (IQR) values in original units according to control or intervention group at each time-point**

	Preconception baseline		Preconception 1-month post supplementation		Early pregnancy (7-11 weeks gestation)		Late pregnancy (28 weeks gestation)		6 months post-delivery	
	Controls	Intervention	Controls	Intervention	Controls	Intervention	Controls	Intervention	Controls	Intervention
Folate (nmol/L)	22.5 (12.7, 41.3)	20.5 (12.1, 41.3)	41.9 (29.3, 55.0)	40.3 (29.0, 52.8)	49.8 (40.5, 60.0)	52.2 (43.2, 63.0)	41.5 (30.6, 51.6)	44.1 (34.3, 54.5)	19.2 (11.9, 32.7)	18.9 (12.3, 32.2)
Homocysteine (µmol/L)	7.0 (6.1, 8.4)	7.1 (6.1, 8.5)	6.9 (6.0, 8.0)	6.4 (5.6, 7.4)	5.5 (4.8, 6.4)	4.9 (4.2, 5.6)	4.6 (3.9, 5.2)	3.9 (3.5, 4.6)	7.4 (6.4, 9.0)	7.2 (6.1, 8.5)
Riboflavin (nmol/L)	12.7 (7.7, 21.7)	12.0 (7.6, 21.2)	12.7 (8.3, 22.3)	24.7 (16.7, 36.8)	10.7 (6.8, 18.0)	20.0 (13.0, 30.3)	10.3 (6.6, 15.1)	16.9 (12.2, 23.3)	12.9 (8.8, 21.1)	12.7 (8.4, 22.6)
FMN (nmol/L)	14.4 (11.5, 18.7)	14.6 (11.9, 18.7)	15.6 (12.4, 20.1)	18.4 (15.0, 23.4)	14.5 (11.4, 18.2)	17.2 (14.3, 21.6)	10.1 (8.4, 12.0)	11.5 (9.8, 13.4)	14.2 (11.8, 17.0)	14.4 (11.2, 18.7)
Pyridoxal 5-phosphate (nmol/L)	55.8 (40.3, 88.4)	57.1 (41.1, 84.3)	56.9 (43.0, 80.1)	140.0 (102.0, 184.0)	47.6 (34.3, 64.1)	106.0 (76.0, 139.0)	19.1 (14.7, 28.1)	41.9 (30.3, 56.4)	56.3 (40.0, 88.2)	56.1 (40.5, 86.6)
HK ratio (no units)	0.35 (0.29, 0.43)	0.36 (0.29, 0.42)	0.35 (0.29, 0.42)	0.29 (0.24, 0.35)	0.35 (0.28, 0.43)	0.29 (0.24, 0.33)	0.51 (0.41, 0.60)	0.44 (0.37, 0.54)	0.40 (0.32, 0.49)	0.39 (0.32, 0.47)
Cobalamin (pmol/L)	355.2 (283.1, 434.1)	350.9 (278.8, 437.7)	358.9 (284.0, 449.3)	438.2 (353.3, 552.1)	307.4 (240.2, 384.0)	411.1 (332.0, 509.3)	214.6 (177.3, 270.0)	298.7 (247.9, 379.5)	340.4 (264.5, 437.8)	385.6 (312.3, 465.7)
MMA (µmol/L)	0.13 (0.11, 0.17)	0.13 (0.11, 0.17)	0.15 (0.12, 0.19)	0.15 (0.12, 0.19)	0.12 (0.10, 0.15)	0.11 (0.10, 0.14)	0.14 (0.11, 0.20)	0.12 (0.10, 0.15)	0.15 (0.12, 0.20)	0.14 (0.12, 0.17)
Vitamin D3 (nmol/L)	51.0 (36.0, 65.3)	50.1 (36.1, 65.8)	51.7 (37.0, 65.5)	61.1 (51.1, 73.3)	53.3 (41.8, 69.5)	69.6 (57.3, 81.2)	62.9 (41.0, 87.5)	92.8 (73.0, 106.9)	62.5 (45.3, 77.6)	64.6 (48.5, 77.6)

831

832 HK ratio – 3'-hydroxykynurenine ratio, FMN – flavin mononucleotide, MMA – methylmalonic acid

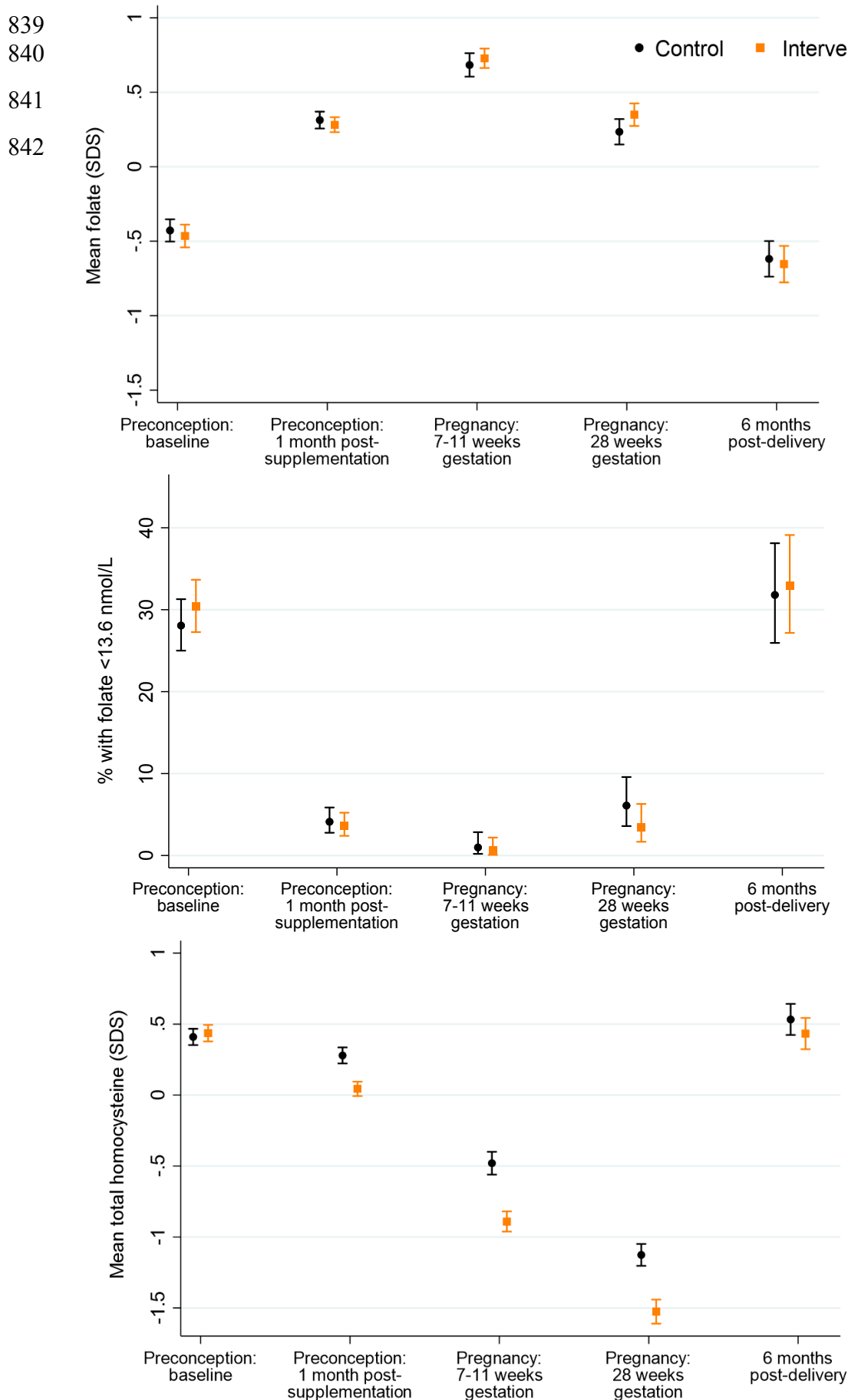
833 **Table 3: Percentages of participants meeting vitamin/vitamer deficiency/insufficiency thresholds according to time-point and control/**
 834 **intervention group.** Values in parentheses are 95% confidence intervals. *Chi-squared P<0.05 for intervention vs control difference at that time point

	Preconception baseline		Preconception 1-month post supplementation		Early pregnancy (7-11 weeks gestation)		Late pregnancy (28 weeks gestation)		6 months post-delivery	
	Controls	Intervention	Controls	Intervention	Controls	Intervention	Controls	Intervention	Controls	Intervention
Folate <13.6 nmol/L	28.1% [25.0, 31.3]	30.4% [27.3, 33.7]	4.1% [2.8, 5.9]	3.6% [2.4, 5.2]	1.0% [0.2, 2.8]	0.6% [0.1, 2.2]	6.1% [3.6, 9.6]	3.5% [1.7, 6.3]	31.8% [25.9, 38.1]	32.9% [27.2, 39.1]
Homocysteine ≥15 μmol/L	0.9% [0.4, 1.8]	0.8% [0.3, 1.7]	0.7% [0.2, 1.6]	0.1% [0.0, 0.7]	0.0% [0.0, 1.2]	0.0% [0.0, 1.1]	0.0% [0.0, 1.3]	0.0% [0.0, 1.3]	0.4% [0.0, 2.2]	2.3% [0.8, 4.9]
Riboflavin <5 nmol/L	7.3% [5.6, 9.2]	7.7% [6.0, 9.7]	6.2% [4.6, 8.3]	0.4%* [0.1, 1.2]	12.5% [9.0, 16.7]	0.9%* [0.2, 2.6]	12.8% [9.2, 17.3]	2.7%* [1.2, 5.3]	4.0% [1.9, 7.2]	3.4% [1.6, 6.4]
Riboflavin ≤26.5 nmol/L	81.1% [78.4, 83.7]	82.8% [80.1, 85.3]	80.3% [77.2, 83.2]	56.1%* [52.4, 59.7]	85.6% [81.1, 89.3]	66.9%* [61.5, 71.9]	92.4% [88.7, 95.2]	81.9%* [77.0, 86.1]	82.5% [77.2, 87.0]	82.8% [77.6, 87.1]
Pyridoxal 5-phosphate <20 nmol/L	0.8% [0.3, 1.7]	1.8% [1.1, 3.0]	0.1% [0.0, 0.8]	0.4% [0.1, 1.2]	2.6% [1.1, 5.1]	0.0%* [0.0, 1.1]	54.2% [48.2, 60.0]	10.2%* [7.0, 14.3]	1.2% [0.2, 3.5]	0.8% [0.1, 2.7]
Cobalamin <148 pmol/L	0.6% [0.2, 1.4]	0.5% [0.1, 1.2]	0.6% [0.2, 1.4]	0.0% [0.0, 0.5]	1.6% [0.5, 3.8]	0.3% [0.0, 1.7]	11.1% [7.7, 15.3]	4.8%* [2.6, 7.9]	0.8% [0.1, 2.9]	0.4% [0.0, 2.1]
Cobalamin <221 pmol/L	7.5% [5.8, 9.5]	10.8%* [8.8, 13.0]	7.0% [5.2, 9.1]	2.4%* [1.4, 3.8]	18.1% [13.9, 22.9]	3.7%* [1.9, 6.3]	55.2% [49.3, 61.0]	16.7%* [12.6, 21.5]	12.4% [8.6, 17.1]	5.4%* [3.0, 8.8]
MMA >0.26 μmol/L	6.2% [4.7, 8.0]	8.7% [6.9, 10.7]	8.5% [6.5, 10.8]	8.6% [6.7, 10.8]	7.5% [4.8, 11.1]	3.6%* [1.9, 6.3]	11.8% [8.3, 16.1]	5.8%* [3.4, 9.1]	10.0% [6.5, 14.4]	5.4% [3.0, 8.8]
Vitamin D3 <50 nmol/L	47.7% [44.3, 51.1]	49.7% [46.3, 53.1]	47.5% [43.8, 51.3]	22.0%* [19.0, 25.1]	43.0% [37.3, 48.7]	12.2%* [8.8, 16.2]	35.1% [29.6, 40.9]	8.5%* [5.6, 12.3]	30.7% [25.0, 36.8]	27.2% [21.9, 33.0]
Vitamin D3 <75 nmol/L	85.7% [83.2, 88.0]	85.0% [82.5, 87.3]	85.1% [82.3, 87.7]	78.2%* [75.0, 81.1]	82.3% [77.5, 86.4]	65.7%* [60.2, 70.8]	64.6% [58.8, 70.1]	27.3%* [22.3, 32.8]	70.5% [64.5, 76.1]	70.5% [64.6, 76.0]

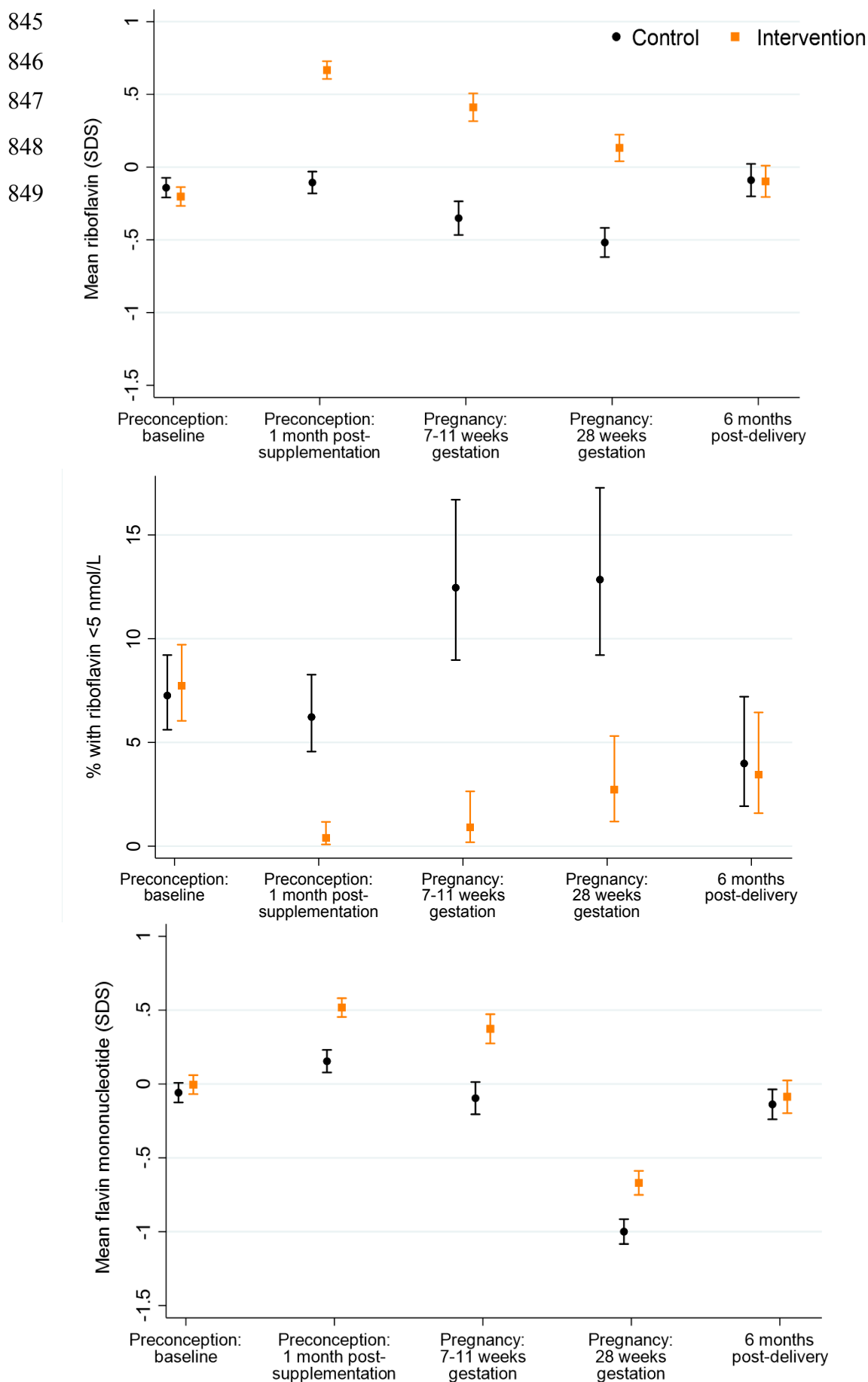
835

836 MMA - methylmalonic acid

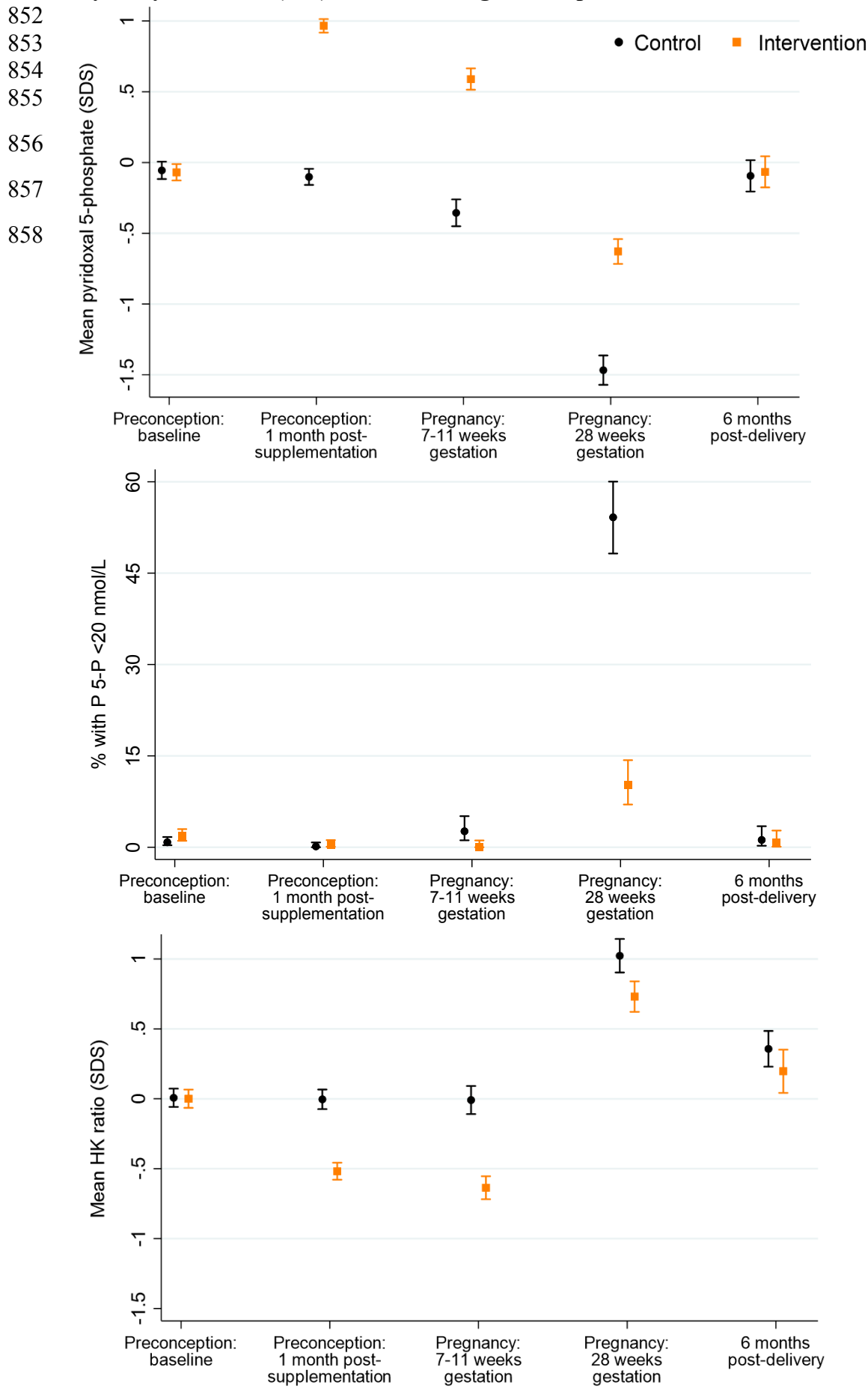
837 **Figure 1: Plasma folate, marginal folate status and plasma homocysteine according to**
838 **time-point and control vs intervention group**



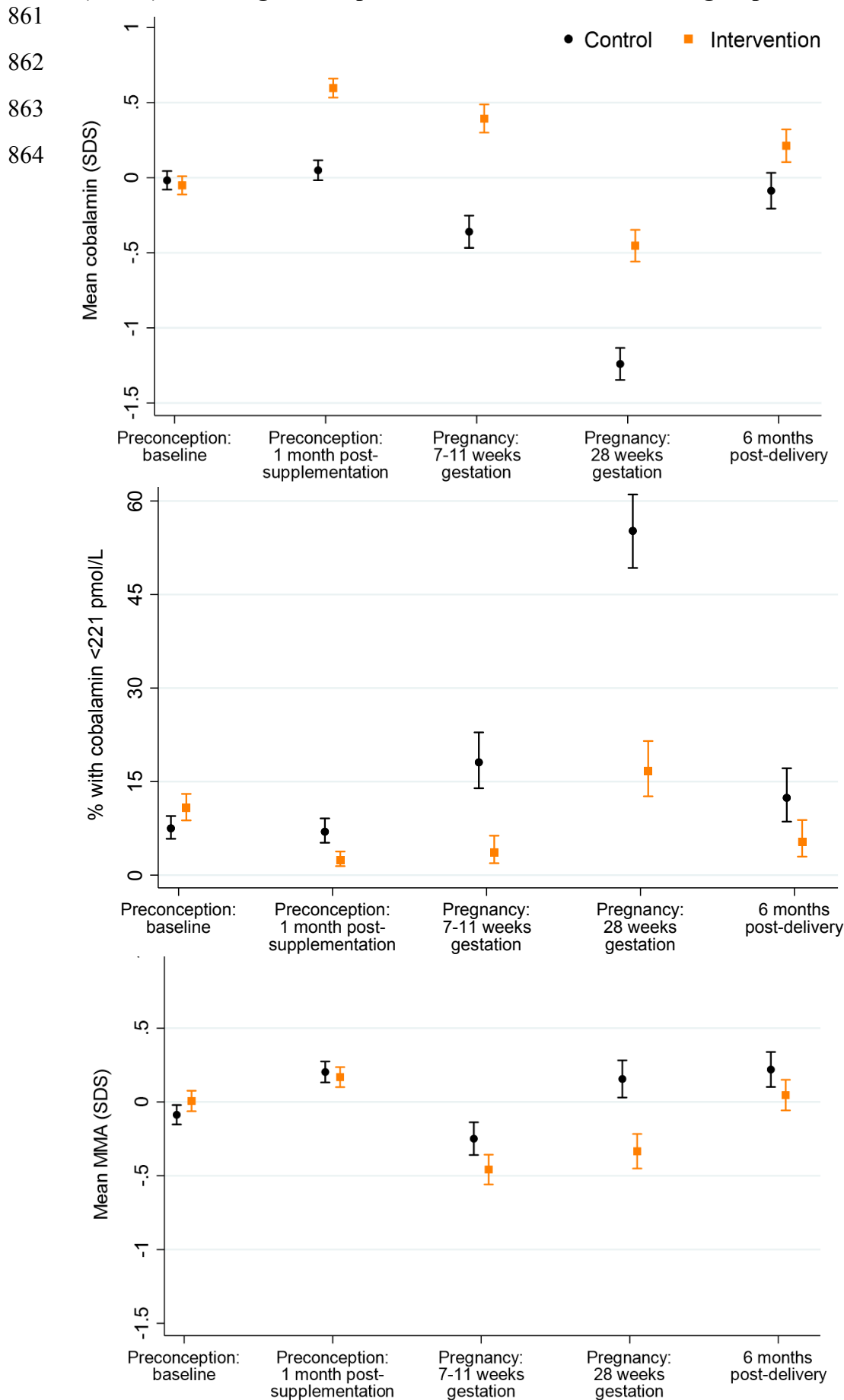
843 **Figure 2: Plasma riboflavin, low riboflavin and plasma flavin mononucleotide according**
844 **to time-point and control vs intervention group**



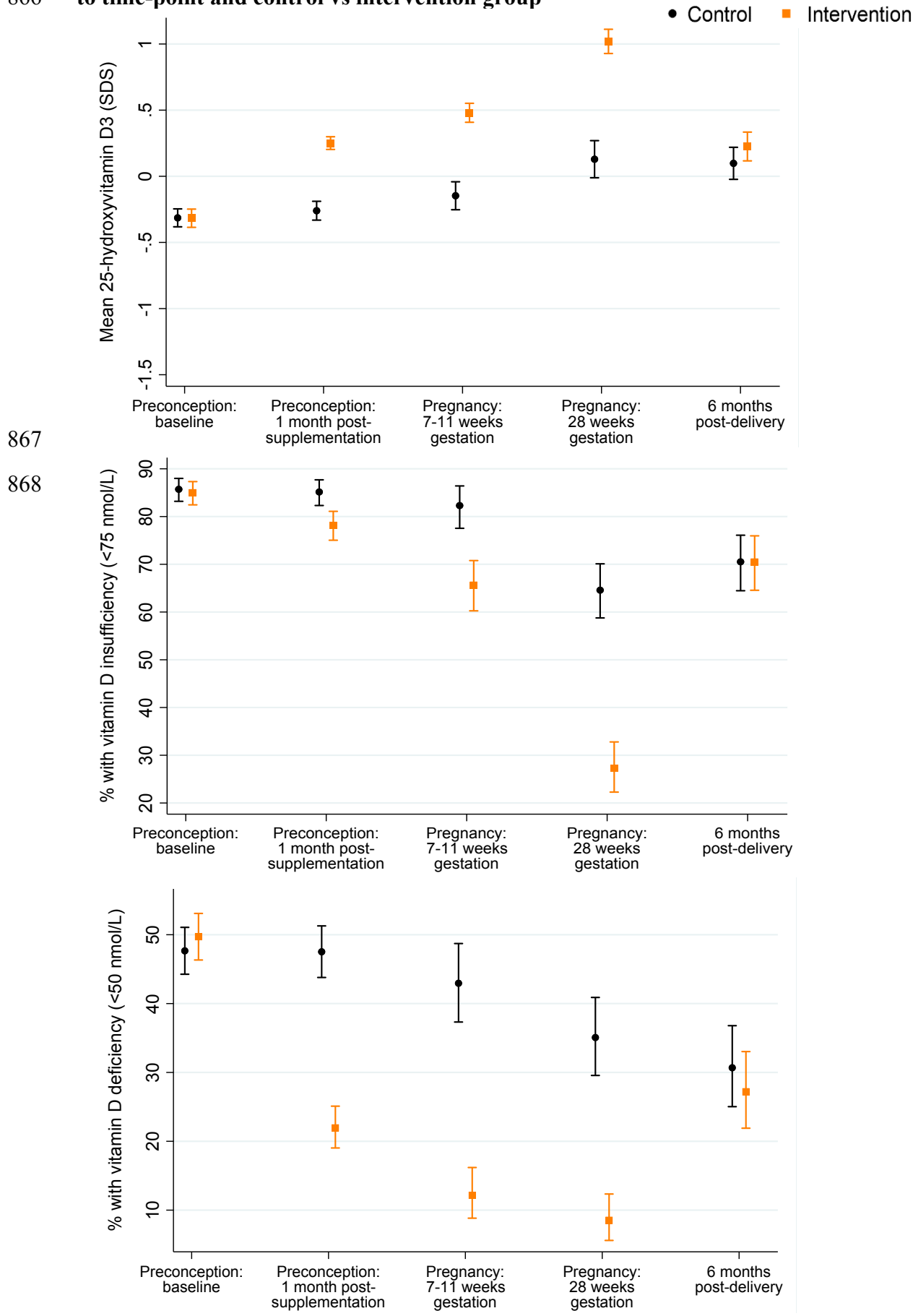
850 **Fig. 3: Plasma pyridoxal 5-phosphate (P 5-P), low pyridoxal 5-phosphate and plasma 3-**
851 **hydroxyknurenine (HK) ratio according to time-point and control vs intervention group**



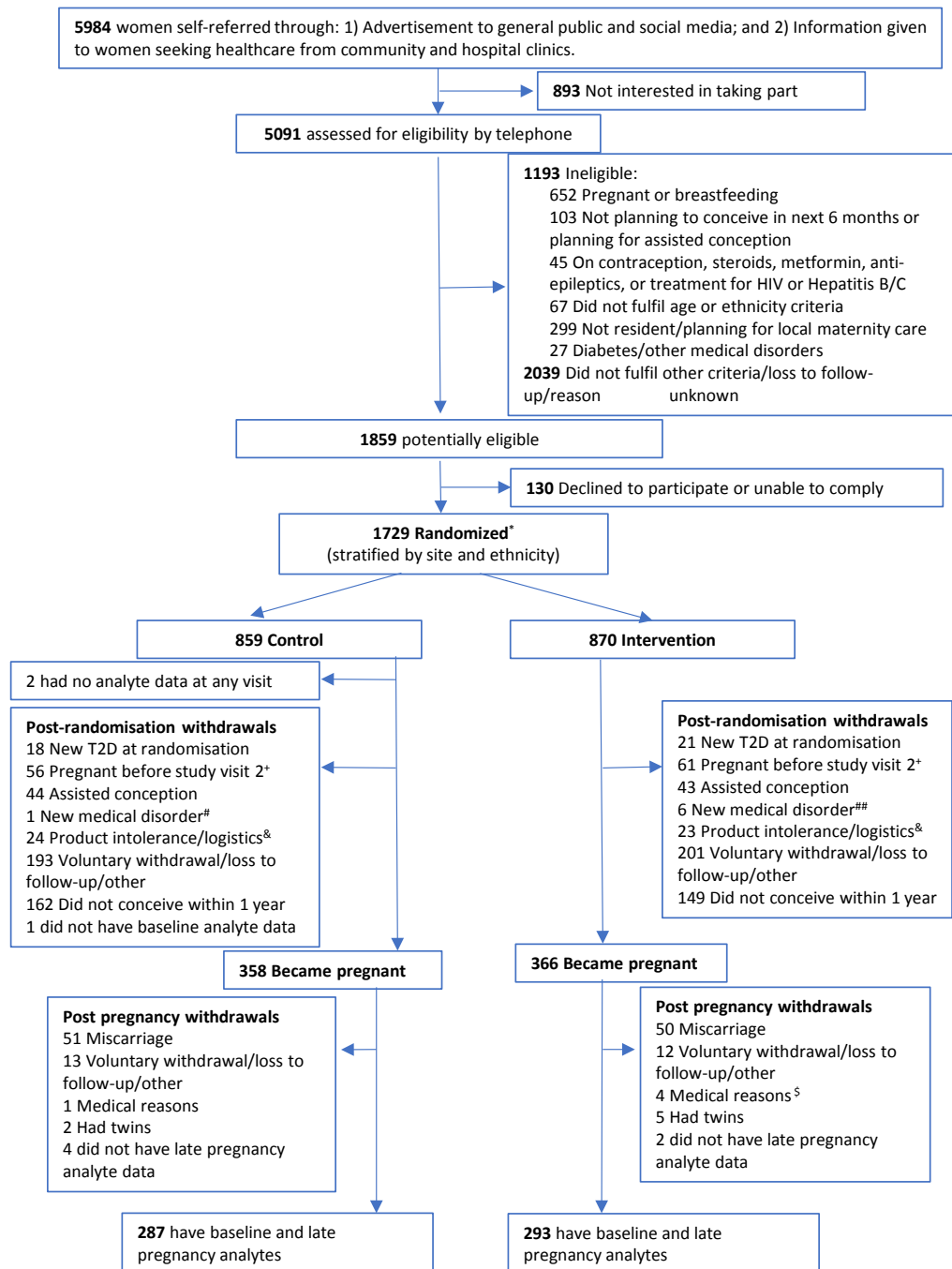
859 **Figure 4: Plasma cobalamin, cobalamin depletion and plasma methylmalonic acid**
860 **(MMA) according to time-point and control vs intervention group**



865 **Figure 5: Plasma 25-hydroxyvitamin D, vitamin deficiency and insufficiency according**
 866 **to time-point and control vs intervention group**



869 **Supplementary Figure 1. Flowchart of study participants** from assessment of eligibility,
 870 through randomization, conception, pregnancy and post-delivery. Abbreviation: Cesarean,
 871 cesarean section delivery.



*Randomised - 607 New Zealand, 661 Singapore, 461 United Kingdom

*Pregnancies before study visit 2 which occurred 3-6 weeks after recruitment were excluded as the intervention was postulated to have inadequate time to have the desired effect for the pregnancy.

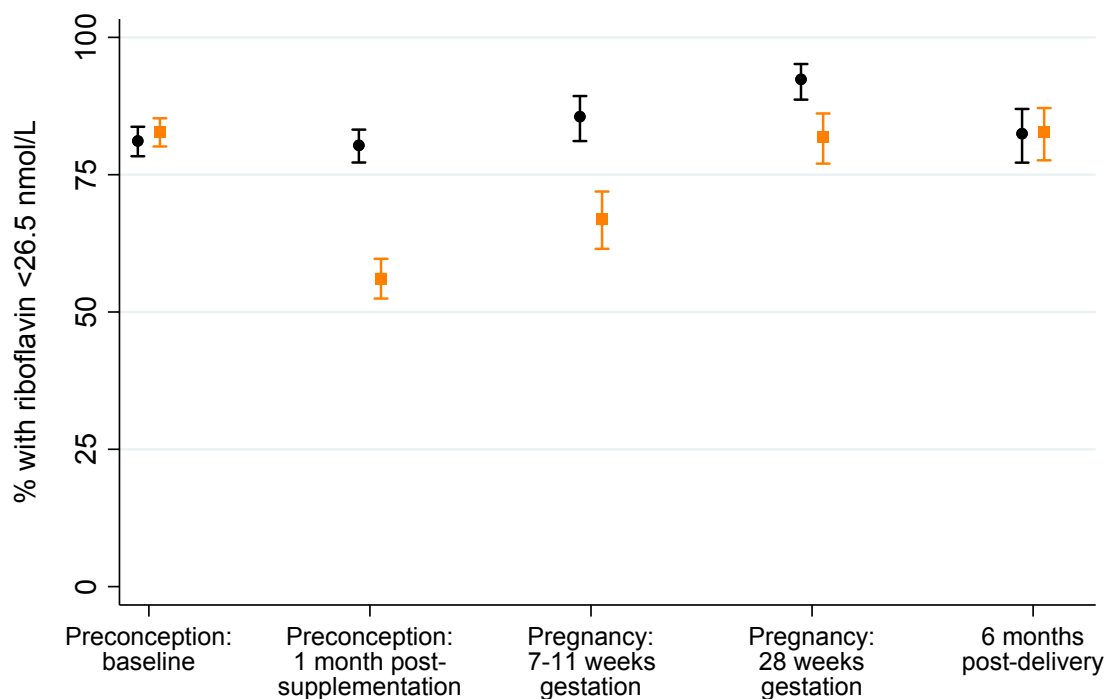
#Premature ovarian failure; ## new onset Graves' disease, hemoglobinopathy with iron overload, prolactinoma, endometrial polyp, endometrial atypia, breast cancer.

& Withdrew as product may contain animal remnants, no storage space, participant perception of product-related symptoms.

⁵Includes one neonatal death

872

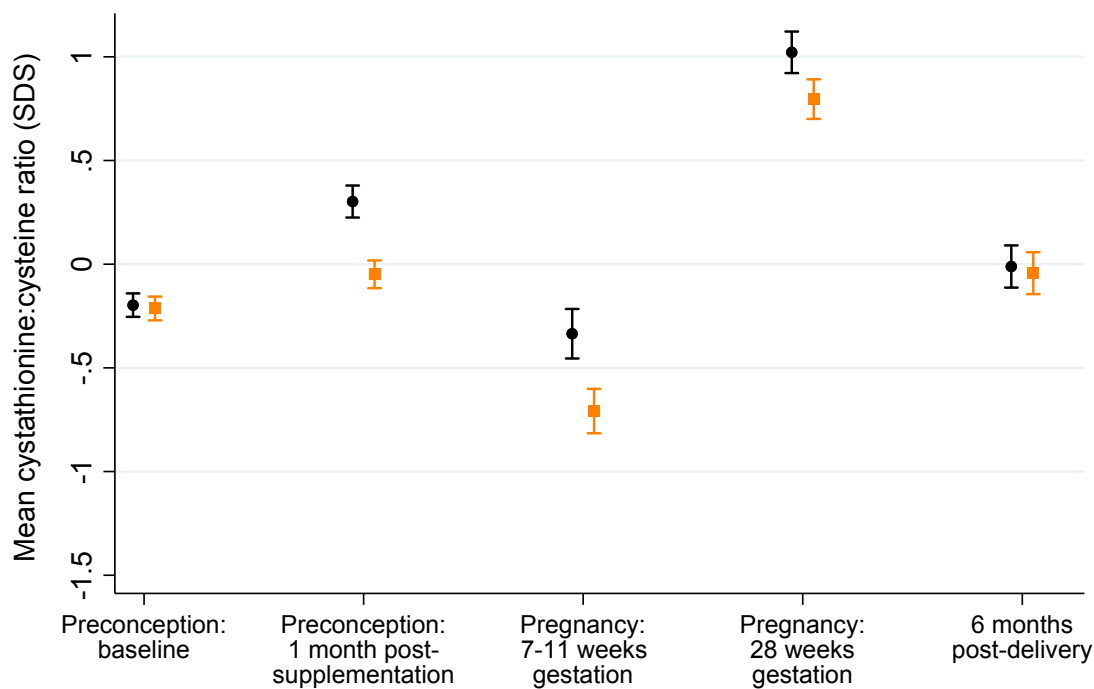
873 **Supplementary Figure 2. Marginal riboflavin status (plasma riboflavin ≤ 26.5 nmol/L)**



874

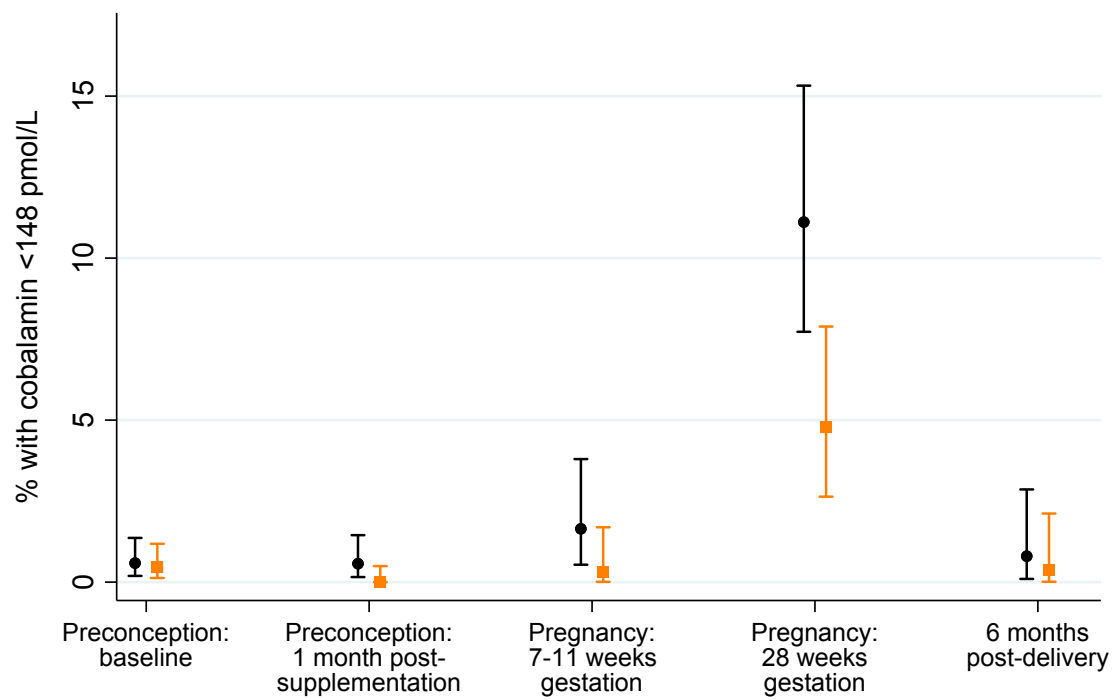
875

876 **Supplementary Figure 3. Plasma cystathionine/cysteine ratio**



877

878 **Supplementary Figure 4. Vitamin B12 deficiency (<148 pmol/L)**



879

880 **Supplementary Table 1: Median (IQR) values in original units according to control or intervention group at each time-point, for**
 881 **participants with measurements at each of preconception baseline and late pregnancy**

	Preconception baseline		Preconception 1-month post supplementation		Early pregnancy (7-11 weeks gestation)		Late pregnancy (28 weeks gestation)		6 months post-delivery	
	Controls (n=287)	Intervention (n=293)	Controls (n=286)	Intervention (n=292)	Controls (n=276)	Intervention (n=289)	Controls (n=287)	Intervention (n=293)	Controls (n=247)	Intervention (n=260)
Folate (nmol/L)	23.1 (13.5, 41.3)	23.8 (13.6, 42.6)	44.4 (30.9, 56.3)	42.9 (31.4, 54.2)	49.9 (40.6, 60.2)	52.2 (43.7, 63.0)	41.5 (30.6, 51.4)	44.1 (34.3, 54.5)	19.3 (11.9, 33.2)	19.0 (12.4, 32.4)
Homocysteine (µmol/L)	7.0 (6.1, 8.3)	7.1 (6.0, 8.4)	6.8 (6.0, 7.9)	6.3 (5.5, 7.3)	5.5 (4.8, 6.4)	4.8 (4.2, 5.5)	4.6 (3.9, 5.2)	3.9 (3.5, 4.6)	7.4 (6.4, 9.0)	7.2 (6.1, 8.5)
Riboflavin (nmol/L)	12.7 (7.5, 19.6)	13.7 (8.6, 21.3)	12.6 (8.4, 21.5)	25.1 (16.8, 38.0)	10.8 (6.7, 18.4)	19.7 (13.0, 29.8)	10.2 (6.6, 15.1)	16.9 (12.2, 23.3)	13.0 (8.9, 21.1)	12.8 (8.4, 22.6)
FMN (nmol/L)	14.7 (11.4, 18.7)	15.0 (12.0, 19.6)	15.6 (12.7, 19.5)	19.0 (15.1, 25.1)	14.3 (11.4, 18.3)	17.4 (14.2, 21.6)	10.1 (8.4, 12.0)	11.5 (9.8, 13.4)	14.2 (11.8, 17.0)	14.4 (11.2, 18.7)
Pyridoxal 5-phosphate (nmol/L)	59.4 (42.4, 92.1)	61.0 (44.9, 99.0)	57.2 (44.7, 79.3)	144 (107, 187)	47.6 (34.7, 64.2)	104.0 (75.8, 138.0)	19.2 (14.6, 28.3)	41.9 (30.3, 56.4)	55.9 (40.0, 88.1)	56.4 (40.5, 86.8)
HK ratio (no units)	0.35 (0.30, 0.43)	0.36 (0.30, 0.41)	0.36 (0.29, 0.42)	0.29 (0.26, 0.34)	0.35 (0.28, 0.42)	0.29 (0.24, 0.33)	0.51 (0.41,0.61)	0.44 (0.37,0.54)	0.40 (0.32, 0.49)	0.39 (0.32, 0.47)
Cobalamin (pmol/L)	355 (276, 444)	354 (278, 434)	355 (278, 449)	447 (357, 553)	307 (240, 385)	411 (332, 511)	214 (176, 270)	299 (248, 380)	342 (265, 438)	386 (312, 466)
MMA (µmol/L)	0.13 (0.11, 0.17)	0.14 (0.11, 0.18)	0.15 (0.12, 0.21)	0.15 (0.12, 0.19)	0.12 (0.10, 0.15)	0.11 (0.10, 0.14)	0.14 (0.11,0.20)	0.12 (0.10,0.15)	0.15 (0.12, 0.20)	0.14 (0.12, 0.17)
Vitamin D3 (nmol/L)	53.5 (40.3, 68.0)	54.4 (39.6, 70.0)	54.4 (40.5, 69.4)	64.8 (54.5, 76.4)	52.8 (41.5, 69.4)	70.0 (57.6, 81.8)	62.9 (41.0, 87.5)	92.8 (73.0,106.9)	62.3 (45.3, 77.6)	65.1 (48.4, 78.2)

882 HK ratio – 3'-hydroxykynurenine ratio, FMN – flavin mononucleotide, MMA - methylmalonic acid