

Prognostic Impact of Preoperative Atrial Fibrillation in Patients Undergoing Heart Surgery in Cardiogenic Shock.

Running head: **-Atrial Fibrillation and Cardiogenic Shock-**

Mariusz Kowalewski^{1,2,14*}; Giuseppe M. Raffa^{3,14*}; Michał Pasierski^{1,14}; Michalina Kołodziejczak^{4,14}; Radosław Litwinowicz^{5,14}; Wojciech Wańha^{6,14}; Wojciech Wojakowski⁶; Jan Rogowski⁷; Marek Jasiński⁸; Kazimierz Widenka⁹; Tomasz Hirnle¹⁰; Marek Deja^{11,12}; Krzysztof Bartus⁵; Roberto Lorusso²; Zdzisław Tobota¹³; Bohdan Maruszewski¹³ and Piotr Suwalski^{1,14} on behalf of KROK Investigators

KROK Investigators:

Lech Anisimowicz MD, PhD (Bydgoszcz); Krzysztof Bartus MD, PhD (Kraków); Andrzej Biederman MD, PhD (Warszawa); Dariusz Borkowski MD (Radom); Mirosław Brykczyński MD, PhD (Szczecin); Paweł Bugajski MD, PhD (Poznań); Marian Burysz (Grudziądz) Paweł Cholewiński (Radom); Romuald Cichoń MD, PhD (Warszawa); Marek Cisowski MD, PhD (Bielsko-Biała); Marek Deja MD, PhD (Katowice); Antoni Działkowiak MD, PhD (Kraków); Tadeusz Gburek MD (Zamość); Witold Gerber MD (Bielsko-Biała); Leszek Gryczko MD (Warszawa); Ireneusz Haponiuk MD (Gdańsk); Piotr Hendzel MD, PhD (Warszawa); Tomasz Hirnle MD, PhD (Białystok); Stanisław Jabłonka MD, PhD (Lublin); Krzysztof Jarmoszewicz MD (Wejherowo); Jarosław Jasiński MD (Zielona Góra); Marek Jasiński MD, PhD (Wrocław); Ryszard Jaszewski MD, PhD (Łódź); Marek Jemielity MD, PhD (Poznań); Ryszard Kalawski MD, PhD (Poznań); Bogusław Kapelak MD, PhD (Kraków); Maciej A. Karolczak MD, PhD (Warszawa); Jacek Kaperczak MD (Opole); Piotr Knapik MD, PhD (Zabrze); Michał Krejca MD, PhD (Łódź); Wojciech Kustrzycki MD, PhD (Wrocław); Mariusz Kuśmierczyk MD, PhD (Warszawa); Paweł Kwinecki MD (Wrocław); Leszek Markuszewski MD, PhD (Łódź); Bohdan Maruszewski (Warszawa); Maurycy Missima MD (Bydgoszcz); Jacek J Moll MD, PhD (Łódź); Wojciech Ogorzeja MD (Grudziądz); Jacek Pająk MD (Katowice); Michał Pasierski (Warszawa); Wojciech Pawliszak MD (Bydgoszcz); Edward Pietrzyk MD (Kielce); Grzegorz Religa MD (Łódź); Jan Rogowski MD, PhD (Gdańsk); Jacek Różański MD, PhD (Warszawa); Jerzy Sadowski MD, PhD (Kraków); Girish Sharma MD (Wrocław); Janusz Skalski MD, PhD (Kraków); Jacek Skiba MD (Wrocław); Ryszard Stanisławski MD (Nowa Sól); Janusz Stążka MD, PhD (Lublin); Sebastian Stec MD, PhD (Warsaw); Piotr Stępiński MD (Nowa Sól); Grzegorz Suwalski MD (Warszawa); Kazimierz Suwalski MD, PhD (Warszawa); Piotr Suwalski MD, PhD (Warszawa); Łukasz Tułeczki MD (Zamość); Kazimierz Widenka MD, PhD (Rzeszów); Waldemar Wierzbica MD (Warszawa); Michał Wojtalik MD, PhD (Poznań); Stanisław Woś MD, PhD (Katowice); Michał Oskar Zembala MD, PhD (Zabrze) and Piotr Żelazny MD (Olsztyn).

1. Department of Cardiac Surgery and Transplantology, Central Clinical Hospital of the Ministry of Interior, Centre of Postgraduate Medical Education, Warsaw, Poland;
2. Cardio-Thoracic Surgery Department, Heart and Vascular Centre, Maastricht University Medical Centre, Maastricht, the Netherlands;
3. Department for the Treatment and Study of Cardiothoracic Diseases and Cardiothoracic Transplantation, IRCCS-ISMETT, Palermo, Italy;
4. Department of Anaesthesiology and Intensive Care, Ludwik Rydygier Collegium Medicum, Nicolaus Copernicus University, Antoni Jurasz University Hospital No. 1, Bydgoszcz, Poland;

5. Department of Cardiovascular Surgery and Transplantology, Jagiellonian University Medical College, John Paul II Hospital, Krakow, Poland;
6. Department of Cardiac Surgery, Medical University of Silesia, School of Medicine in Katowice, Katowice, Poland;
7. Department of Cardiac and Vascular Surgery, Medical University of Gdansk, Gdansk, Poland;
8. Department and Clinic of Cardiac Surgery, Wroclaw Medical University, Wroclaw, Poland;
9. Clinical Department of Cardiac Surgery, District Hospital No. 2, University of Rzeszów, Rzeszów, Poland;
10. Department of Cardiosurgery, Medical University of Bialystok, Bialystok, Poland;
11. Department of Cardiac Surgery, Upper-Silesian Heart Center, Katowice, Poland;
12. Department of Cardiology and Structural Heart Diseases, Medical University of Silesia, Katowice, Poland;
13. Department of Pediatric Cardiothoracic Surgery, The Children's Memorial Health Institute, Warsaw, Poland;
14. Thoracic Research Centre, Collegium Medicum Nicolaus Copernicus University, Innovative Medical Forum, Bydgoszcz, Poland.

Correspondence: Mariusz Kowalewski, MD, PhD
Clinical Department of Cardiac Surgery,
Central Clinical Hospital of the Ministry of Interior and Administration
Warsaw, Poland
Wołoska 137 Str, 02-507 Warsaw, PL
phone: 0048 502269240
e-mail: kowalewskimariusz@gazeta.pl

Wordcount: 3,314

Conflict of interest statement: authors have no conflicts to disclose

*equal contribution

Abstract

Background: Surgical intervention in the setting of cardiogenic shock (CS) is burdened with high mortality. Due to acute condition, detailed diagnoses and risk assessment is often precluded. Atrial fibrillation (AF) is a risk factor for perioperative complications and worse survival but little is known about AF patients operated in CS. Current analysis aimed to determine prognostic impact of preoperative AF in patients undergoing heart surgery in CS.

Methods: We analyzed data from the Polish National Registry of Cardiac Surgery (KROK) Procedures. Between 2012 and 2021, 4,852 patients presented with CS and were referred for cardiac surgery in 37 centers. Total of 624 (13%) patients had AF history. Cox proportional hazards models were used for computations. Propensity score (nearest neighbor) matching for the comparison of patients with and without AF was performed.

Results: Median follow-up was 4.6 years (max.10.0), mean age was 62 (\pm 15) years and 68% patients were men. Thirty-day mortality was 36%. The origin of CS included acute myocardial infarction (36%), acute aortic dissection (22%) and valvular dysfunction (13%). In an unadjusted analysis, patients with underlying AF had almost 20% higher mortality risk (HR 1.19, 95% CIs 1.06-1.34; P=0.004). Propensity score matching returned 597 pairs with similar baseline characteristics; AF remained a significant prognostic factor for worse survival (HR 1.19, 95% CI 1.00-1.40; P=0.045).

Conclusions: Among patients with CS referred for cardiac surgery, history of AF was a significant risk factor for mortality. Role of concomitant AF ablation and/or left atrial appendage occlusion should be addressed in the future.

Keywords: Cardiogenic Shock, Heart surgery, Atrial fibrillation, Mortality, CABG

Introduction

Cardiogenic shock (CS)-related condition at the time of cardiac surgery procedures is a common cause of mortality and its management remains a major challenge despite advances in therapeutic options including mechanical cardiovascular support (MCS)[1-3]. Some of the reversible causes of cardiogenic shock can be successfully managed surgically, provided they are diagnosed quickly before damage to the myocardium is permanent and recovery unlikely [4-6]. Regardless, cardiac surgery in patients with cardiogenic shock is often burdened with excessive risk [7-9], for the following reasons: 1) detailed diagnostic process might have been not performed due to extremely compromised patient hemodynamic condition; 2) surgery tends to focus on the main objective which is to reverse the CS with borderline coronary lesions or moderate valve insufficiencies seldom addressed; 3) risk of postoperative complications is much higher due to end-organ hypoperfusion and dysfunction at baseline; and finally; 4) postcardiotomy shock from low cardiac output syndrome (LCOS) is more likely to develop in these patients and postoperative MCS such as veno-arterial extracorporeal membrane oxygenation (V-A ECMO) or ventricle assist device (VAD) may be necessary alongside pharmacological support to stabilize the patients in this critical condition [10].

Atrial fibrillation (AF) is the most common arrhythmia worldwide and its prevalence is higher in patients with coronary artery- (CAD) or valve disease [11]. The effect of untreated AF on long-term prognosis, both in patients who need cardiac surgery and in patients who do not, is well known [12-14]. On the other hand, the available evidence on whether and how pre-existing AF is complicating cardiogenic shock is limited to acute myocardial infarction (AMI) induced CS (AMI-CS) [15-17] but poorly investigated in surgically treated CS patients. This is the first report to address the burden of AF in patients undergoing heart surgery for CS.

Methods

Data were collected in a retrospective fashion from the KROK (Polish National Registry of Cardiac Surgery Procedures) registry (available at: www.krok.csioz.gov.pl). The registry is an ongoing, nationwide, multi-institutional registry of heart surgery procedures in Poland; the details on registry conception and design were described previously [18-20]. Study was approved by Institutional Board of CSK MSWiA and adheres to Helsinki Declaration as revised in 2013. Due to anonymization of registry data, patient consent was waived.

Study population

The registry included all adult patients undergoing heart surgery between and 1st Jan 2012 and 31st Dec 2021 and presenting with cardiogenic shock due to all causes. Only patients undergoing heart surgery for isolated pericardial effusion were excluded. Cardiogenic shock in the KROK registry was defined as per SHOCK trial criteria [21] 1) systolic blood pressure (SBP) <90 mm Hg for >30 min or vasopressor support to maintain SBP >90 mm Hg or 2) evidence of end-organ damage (urine output [UO] <30 mL/h or cool extremities) or 3) hemodynamic criteria: cardiac index (CI) <2.2 and pulmonary capillary wedge pressure (PCWP) >15 mm Hg; until 2016; from then on, European Society of Cardiology Heart Failure guidelines [22] criteria were imposed and CS defined as 1) SBP <90 mm Hg with appropriate fluid resuscitation with clinical and laboratory evidence of end-organ damage or 2) clinical criteria: cold extremities, oliguria, altered mental status, narrow pulse pressure and 3) laboratory criteria: metabolic acidosis, elevated serum lactate, elevated serum creatinine. Diagnosis of cardiogenic shock was left to discretion of treating physician. We divided the study cohort into patients with documented history of AF before the index surgery, and patients without documentation of AF. Post-operative AF was not recorded and therefore not considered. The study flow chart of the present analysis is shown in Figure 1.

Clinical variables and endpoints

For patients undergoing heart surgery, we considered and reported 3 categories of variables: (1) baseline demographics: age, gender, EuroSCORE II [23] and its single components; (2) extent of coronary artery disease (CAD) and/or valvular and/or aortic disease and (3) surgical variables: urgency, operative technique (e.g. on-pump vs off-pump coronary artery bypass grafting [CABG] surgery). The primary endpoint was death from any cause reported at 30 days and longest available follow-up for the comparison of AF and non-AF patients. In-hospital outcomes and lengths of stays in the intensive care unit (ICU) and hospital (HLoS) are reported and compared as well. Baseline clinical-, procedural- and outcome data at follow-up were entered into prespecified electronic case report forms. Follow-up status with respect to all-cause mortality is validated by Polish National Health Fund and incorporated into the KROK registry.

Statistical analysis

Registry records with >5% of missing data were not considered; in those with <5%, missing data were input by artificial neural networks [24]. Continuous variables were summarized as mean \pm standard deviation if normally distributed; non-normal distributions were summarized as median and interquartile range (IQR) and compared with the Mann–Whitney U test or standard t test as appropriate. Categorical variables (number [%]) were compared with the Fisher’s exact test. Risk ratios (RRs) were used primarily for 30-day/in-hospital outcomes. Univariable and multivariable analyses to determine predictors of mortality were conducted. Similarly, we carried out univariable and multivariable analyses to identify the factors associated with the prevalence of AF. We built a non-parsimonious model including variables identified in multivariable analyses [25] for propensity score matching (PSM); a 1 to 1 nearest

neighbor matching was performed with replacement (caliper 0.2); the overall long-term mortality was assessed with Kaplan-Meier curves fitted before (unadjusted model) and after propensity score matching. Cox regression was used to determine long-term hazard ratio (HR) for all-cause mortality as stratified by AF and non-AF patients. As a further sensitivity analysis to assess the survival in AF and non-AF subsets, we further stratified patients according to pre-defined subgroups. STATA MP v13.0 software (StataCorp, College Station, TX USA) and the packages “psmatch2”, “robust”, “optmatch”, “matchIt” and “CRTgeeDR” in R Core Team 2013 were used.

Results

Baseline demographics

Preoperative AF was documented in 624 of 4,852 (12.8%) patients, the mean age was 62 years and 68% patients were men. Baseline characteristics of unadjusted group of patients are further available as Supplementary Table 1. Presence of underlying atrial fibrillation was associated with age ($P<0.001$), repeat surgery ($P<0.001$); diabetes ($P<0.001$); hypertension ($P=0.002$); chronic kidney and pulmonary disease ($P=0.026$ and 0.005 respectively) as well as mitral valve disease ($P<0.001$); patients presenting with coronary disease ($P=0.005$) and acute aortic dissection ($P=0.021$) less frequently had underlying AF in multivariable analysis (Supplementary Table 2). The origin of CS included acute myocardial infarction (36%) acute aortic dissection (22%) and valvular dysfunction (13%). Other etiologies of CS are shown in Figure 2 and Supplementary Table 3. Acute MI mechanical complications (free wall rupture, papillary muscle rupture, ventricular septal defect and left ventricle aneurysm) constituted 6.9% of cardiogenic shock causes (Figure 2).

Mechanical circulatory support was used preoperatively in 920 (21.4%) patients, and most commonly included intra-aortic balloon pump in 876 (18.1%) patients; followed by ECMO in 78 (3.0%) patients and VAD in 97 (2.0%).

Coronary artery bypass grafting was most commonly performed procedure [1,594 pts (32.9%)] followed by aortic dissection repair in 957 (19.7%); aortic, mitral and tricuspid valve repair or replacement surgery was performed in 727 (15.0%), 551 (11.4%) and 140 (2.9%) cases respectively. Fifty-eight (1.2%) patients underwent orthotopic heart transplantation while 101 (2.1%) underwent VAD implantation. Median ICU length of stay was 101.5 hours [Interquartile range (IQR): 47.3-213.6] and HLoS among those who survived to discharge 9.2 days (IQR: 5.7-16.6). Surgical data are reported in Supplementary Table 4.

Thirty-day mortality was 35.6%. In-hospital complications are available as Supplementary Table 5. In multivariable analysis, age ($P<0.001$); repeat surgery ($P=0.012$); hypertension ($P=0.001$); chronic kidney disease ($P<0.001$); peripheral artery disease ($P<0.001$); mechanical ventilation ($P<0.001$) and surgical urgency ($P<0.001$) were associated with long-term mortality (Supplementary Table 6). In an unadjusted analysis, patients with AF had almost 20% higher mortality risk (HR 1.19, 95% CIs 1.06-1.34; $P=0.004$) (Supplementary Figure 1).

PS-matched analysis

We performed a propensity score analysis after the exclusion of orthotopic heart transplantation patients. After the PS-matching 597 pairs were identified (Figure 1). Baseline characteristics of the study cohort are summarized in Table 1. Patients with AF had more previous percutaneous coronary artery intervention (13.7% vs 18.9%; $P=0.01$), whereas no other significant differences regarding the prevalence of cardiovascular risk factors and comorbidities were seen (Table 1, Supplementary Figure 2 - SMD figure Love plot, Supplementary Figure 3 - PS distribution plot). Principal causes of cardiogenic shock are

listed in Table 2. We observed no marked differences between AF and no AF patients in terms of CS origin. Little less than 30% of patients in both groups were operated on shortly after MI (6.5% had mechanical AMI complications). In 15% of patients in both groups acute aortic dissection was the indication for emergent surgery, while pulmonary embolism and infective endocarditis accounted for around 10% in each group.

Surgical data are listed in Table 3. There was a trend towards higher prevalence of hemodynamic instability, defined as the use of iv inotropes (65.3% versus 70.4%; $P=0.072$) in the AF group. Coronary artery bypass grafting (23.5 %) and mitral valve procedure (21.6%) were the most commonly performed procedures without significant differences between AF and no-AF patients. In the AF group, the tricuspid valve procedures (4% versus 7.2%; $P=0.023$) and surgical pulmonary embolectomy rates (1% versus 3%; $P=0.021$) were higher. Among patients with AF concomitant cardiac ablation was performed in 6 patients (1%) and left atrial appendage (LAA) closure in 12 (2%).

The use of mechanical circulatory support (pre-operative ventricular assist device (2% versus 2%; $P=1.000$) and extracorporeal membrane oxygenation (1.7% versus 3.2%; $P=0.131$) was similar in both groups.

In hospital outcomes are reported in Table 4. The major postoperative outcomes: severe bleeding requiring re-thoracotomy, respiratory failure, neurological and gastrointestinal complications; superficial and deep sternal wound infection and the use of ECMO and intra-aortic balloon pump was similar in both groups. In the PS-matched analysis, total 30-day mortality was 33.6% and was numerically higher in AF group (34.7 vs 32.5%; $P=0.462$) with incidence rates varying across type of surgical procedures; AAD repair had highest (41.8%), followed by AVR/r (38.9%), CABG+valve (38.6%), TVR/r 36.8%, multivalve surgery 36.2% and mitral valve procedures (35.3%), without significant differences between AF and No AF groups but CABG group (42.7 vs 26.9%; $P=0.005$) in favor of no AF (Figure 3). Median

follow-up was 4.6 years (max.10.0 years) and it was 100% complete for the mortality outcome; AF remained associated with worse survival (HR 1.19, 95% CI 1.00-1.40; P=0.045) (Figure 4) at long term.

Proportional hazard assumption was not violated (P=0.439) as also graphically assessed (Supplementary Figure 4 and 5). In the subgroup analysis, the harmful effect of AF on long-term mortality was seen in patients initially presenting with unstable coronary artery disease (P=0.024) and valvular disease (P=0.030), in particular IE (P=0.007). Supplementary Figure 6.

Discussion

To the best of our knowledge, this is the first study from a large national inpatient database to analyze the prognostic impact of underlying AF in various setting of CS requiring heart surgery. As major findings, history of AF strongly impacts 1) the survival at 30 days driven by reduction of mortality in patients undergoing CABG surgery and 2) and is associated with higher long-term mortality regardless of the etiology of CS. 3) postoperative complications were similar in patients with and without documented AF during index hospital stay; furthermore, 4) concomitant ablation of AF and closure of left atrial appendage are rarely performed during cardiac procedure for CS.

Atrial fibrillation is the most common cardiac arrhythmia in the general population and a lifetime risk of > 20% after the age of 55 [11,26]. Its prevalence is estimated to at least double with ageing population [11]. Stroke is the most feared complication in patients with AF, however it also impacts on clinical outcome in specific clinical conditions such as AMI and heart failure or following cardiac surgery procedure [13-17, 27]. As many as 28% of the patients admitted for heart surgery procedure present with AF with increasing rates depending on the presence of valvular dysfunction and extent of the cardiac disease [28]. AF is a well-

known marker of high-risk patients and a predictor of postoperative complications including mortality, postoperative stroke, renal failure, prolonged ventilation, reoperation, and deep sternal wound infection [13]. Patients with preoperative diagnosis of AF also experience a higher adjusted long-term risk of all-cause death and of a cumulative risk of stroke and systemic embolism compared to those without [13].

AF and CS post AMI

The prognostic impact of AF in the setting of CS complicating AMI has mostly been reported after percutaneous procedures. From the IABP-SHOCK II trial (600 patients enrolled, 169 with AF versus 431 without), there were no significant differences with respect to mortality at 30 days and 12 months between patients with and without AF [29]. Similarly, the rates of recurrent MI, repeat revascularization, and stroke did not differ between groups. The authors did not observe any interaction between the impact of IABP on clinical outcome and the prevalence of AF. Reflecting the above were the findings reported in a sub-analysis of the Culprit Lesion Only PCI versus Multivessel PCI in Cardiogenic Shock trial [15]. The study included 686 patients (142 with AF history on admission, or newly detected AF during index hospitalization) and AF was not a significant predictor of 30-day and 1-year all-cause mortality. However, patients with AF already on admission (90 of 142), showed higher all-cause mortality at 30 days (58% versus 37%; $P=0.02$) and 1 year (63% versus 39%; $P=0.004$) compared with patients with newly detected AF during hospital stay. Furthermore, AF was associated with longer time to hemodynamic stabilization (4 versus 3 days; $P=0.04$) at 30 days. In another PS-matched study from NIS registry including 840 patients (420 with AF) who underwent PCI while on percutaneous VAD (Impella[®]) because of CS complicating AMI, all-cause in-hospital mortality rates between the two groups were similar (40.5% vs 36.7%, $p=0.245$). However, the AF group experienced a significantly higher rate of

postprocedural respiratory complications (9.5% vs 4.8%; $P=0,007$), fewer routine discharges (13.1% vs 30.2%; $P<0.001$) and more frequent transfers to other healthcare facilities (27.3% vs 17.8%; $P<0.001$). The mean LOS (12 vs 9 days; $P<0.001$) and hospital charges (\$308,478 vs \$277,982; $P=0,008$) were higher in the AF group [16].

AF and CS - surgical strategy

The impact of preoperative AF in patients requiring heart surgery for CS is poorly investigated and reported. In our study, CAD remains the major cause of CS and CABG remains the most common surgical treatment, respectively. The current guidelines do not exclude a role for emergency CABG that is usually regarded as the last resource and only in a very limited percentage of patients [30]. Patients undergoing isolated CABG for CS suffer up to 20% higher mortality rates comparing to those without and this occurs also with milder degrees of CS [31,32]. In one recent analysis from the STS database, of the 5,259 patients with AMI complicated by CS who underwent CABG during the study period, 665 (12.6%) patients had AF which in a multivariable logistic regression analysis was associated with increased operative mortality (HR 1.44, 95% CI [1.18–1.77]; $P<0.001$) [33].

Recent reports on surgery for mitral papillary muscle rupture and CS from the Japan cardiovascular surgery database (196 patients, 140 CS) and STS database (1,342 patients, 759 CS) do not address this issue (the former) or describe no impact of preoperative arrhythmias as predictors of operative mortality in multivariable logistic regression model (the latter) [34, 35]. Sagakuchi et al. identified 1,397 patients undergoing surgical repair of post-MI VSD (61.5% CS) from the national Japanese database and concluded that preoperative AF was not a significant prognostic factor (HR 0.79, 95% CI [0.50-1.23]; $P=0.29$ in the multivariable analysis) [supplementary reference 1]. Similarly, no relationship was observed between the prevalence of the AF and survival in the UK National Adult Cardiac Surgery Audit of post-

infarct ventricular septal defect repair (5.0% among survivors, 5.9% among non-survivors; $P=0.6$) [supplementary reference 2]. Correspondingly, in our study, we did not observe differences in survival in the MI mechanical complications subgroup. However, we noted a significant relationship among patients with different CS etiology, particularly CAD and valvular disease.

One interesting finding of the current analysis is the low utilization rate of MCS devices in patients with CS in anticipation of surgical treatment. In the setting of CS, temporary MCS can help to stabilize patients and grant time for decision-making about the definitive management [31]. In a recent STS report, AF occurrence in patients with AMI and CS undergoing CABG was higher in the MCS group suggesting a further negative hemodynamic impact of this arrhythmia [31]. In our analysis only 19.0% patients received MCS, and these most commonly included IABP (18.1%); followed by ECMO in 78 (3.0%) patients and VAD in 97 (2.0%). What is reflected in the present analysis is the approach to rush the patient to the OR and stabilize the condition with CPB in most cases rather than stabilize the patient first in the ICU.

“Anti-AF” approaches

This study shows that ablation of AF or LAAO during heart surgery for patients in CS is very seldom performed. From the 2020 STS report, only 18 patients among 1342 (1.3%) that underwent mitral valve surgery for ischemic papillary muscle rupture received ablation and in three major randomized trial on LAA closure (LAOS I – III) non-elective surgical cases were excluded by the study design [supplementary references 2-5] . Conditions related to CS requiring surgery are demanding and challenging operations and it is perfectly understandable that management of the cause of CS should be the priority. The current analysis could not address AF surgical management; yet, because of lower mortality in the no-AF matched, it

may suggest there is a potential to reduce both early and long-term mortality when AF is addressed as well. Indeed, previous observational studies suggested similarly lower risk of long-term mortality in patients undergoing surgical ablation concomitant to CABG w/wo valvular procedure in patients in critical condition, with pre-op IABP and on pharmacological inotropic support [20].

Limitations

There are certain limitations to the current retrospective study that need to be acknowledged; firstly, the registry did not collect, at the time of conception, the data regarding long-term outcomes other than all-cause mortality e.g. long-term stroke, rehospitalization for heart failure, repeat revascularization, re-do surgery and other procedures e.g. catheter ablation or PCI; these could further enhance the registry and might have influenced the remote outcome as well. Secondly, certain detailed baseline and operative data such as AF type and duration were not collected by the registry; information on the timing of interventions, delay to surgery, duration of pre-op IABP, doses of inotropes and certain characteristics of mechanical ventilation and other ICU variables are missing. Finally, while PSM accounted for the variables included in the EuroSCORE II and other surgically relevant characteristics minimizing selection bias in an attempt to even baseline patients' characteristics, unmeasured biases and confounders may remain, in particular in the setting of cardiogenic shock, making the association between AF and higher mortality in cardiogenic shock valid only to the extent an analysis of a non-RCTs study allows. On the other hand, multivariable analyses fully support the concept of AF as a hallmark of worse baseline condition and higher risk independently associated with worse prognosis both at early and long-term follow-up. The optimal timing of surgical intervention in patients with CS that could benefit of preoperative MCS is a matter of further debate not addressed by this study.

Conclusions

Among patients with CS referred for cardiac surgery, history of AF was a significant risk factor for both early and long-term mortality. Addressing AF by concomitant ablation and/or left atrial appendage closure at the time of surgery may be considered to reduce thromboembolic risk and worsening of heart failure even in these highest risk patients. However, additional and dedicated studies investigating patients in CS and affected by preoperative AF should be undertaken to carefully analyze the actual impact and related therapeutic treatment to abolish such a cardiac arrhythmia in this peculiar hemodynamic setting.

Clinical Perspectives

Core clinical competencies

The current work is the first to address underlying atrial fibrillation in cardiogenic shock patients undergoing cardiac surgery. After adjusting for baseline variables, AF remains significantly linked to mortality even in this highest surgical risk group.

Translational outlook implications

Up to 10% of patients undergoing heart surgery present with underlying AF. Those undergoing elective procedures, have surgical ablation and/or left atrial appendage occluded to a degree depending on the type of surgery and local reimbursement policy. Patients operated in cardiogenic shock, have their AF seldom addressed. Future studies should look at anti-AF and anti-thrombotic strategies in this particular population.

Acknowledgement

We acknowledge the contribution of late Professor Doctor Marian Zembala (1950-2022), pioneer in cardiac surgery, Head of Silesian Centre for Heart Diseases in Zabrze and the Minister of Health, in the conception and design of the KROK registry.

KROK investigators are listed in the supplement.

Work by Thoracic Research Centre (www.trc.org.pl)

Funding statement

The research received no additional funding

Conflict of interest statement

None declared

Author contribution statement

Conceptualization: MK, GMR; data curation: MK, GMR, MP; formal analysis: MK, MP; funding acquisition: NA; investigation: all authors; methodology: all authors; project administration: MK,PS; resources: MK, PS; software: MK; supervision: MK, PS; validation: all authors; visualization: MK, MP; writing-original draft: all authors; writing-review and editing: all authors. Other: registry administration: ZT.

Data availability statement

The datasets generated during and/or analyzed during the current study are available from the corresponding author on reasonable request.

Figure legend:

Figure 1. Study flow-chart. AF, atrial fibrillation; PS, propensity score; OHT, orthotopic heart transplantation.

Figure 2. Causes of cardiogenic shock. AF, atrial fibrillation; MI, myocardial infarction.

Figure 3. 30-day mortality in AF and no AF groups according to the type of surgery. CABG, Coronary Artery Bypass Grafting; AVR, aortic valve replacement; MVR, mitral valve replacement; TVR/r, tricuspid valve replacement/repair.

Figure 4. Adjusted Kaplan–Meier curve displaying survival according to presence or absence of AF. AF, atrial fibrillation; HR, hazard ratio; CI, Confidence Intervals.

Table 1. Preoperative characteristics after PS-matching

Variable	PS-matched patients		P _{value}
	No AF (597)	AF (597)	
<i>Baseline characteristics</i>			
Age (years)	68 [60-76]	67 [60-75]	0.410
Female gender	214 (35.8)	217 (36.3)	0.904
EUROSCORE II (median [IQR])	20.37 [8.47-39.98]	23.06 [10.32-41.18]	0.096
Diabetes	214 (35.8)	231 (38.7)	0.338
Smoking	324 (54.3)	356 (59.6)	0.070
Hypertension	471 (78.9)	465 (77.9)	0.725
Hyperlipidemia	293 (49.1)	306 (51.3)	0.487
BMI (median [IQR])	27.3 [24.4-30.5]	27.5 [24.6-30.9]	0.474
Renal impairment	276 (46.2)	283 (47.4)	0.728
Dialysis	30 (5.0)	31 (5.2)	1.000
Pulmonary hypertension	222 (37.2)	224 (37.5)	0.952
PVD	207 (34.7)	208 (34.8)	1.000
Carotid disease	51 (8.5)	68 (11.4)	0.122
Previous Stroke	38 (6.4)	54 (9.0)	0.103
Asthma/COPD	113 (18.9)	121 (20.3)	0.610
LVEF	40 [30-50]	40 [30-50]	0.651
CAD	189 (31.7)	189 (31.7)	1.000
LM disease	50 (8.4)	50 (8.4)	1.000
Previous MI	174 (29.1)	198 (33.2)	0.151
Previous PCI	82 (13.7)	113 (18.9)	0.019

PS, propensity score; IQR, interquartile range; BMI, body mass index; PVD, Peripheral Vascular Disease; COPD, chronic obstructive lung disease; LVEF, left ventricle ejection fraction; CAD, coronary artery disease; LM, left main; MI, myocardial infarction; PCI, percutaneous intervention.

Table 2. Principal causes of cardiogenic shock

	PS-matched patients		
	No AF (597)	AF (597)	P _{value}
<i>Cause of Cardiogenic Shock</i>			
Acute MI	178 (29.8)	174 (29.1)	0.849
MI Mech Complications	39 (6.5)	39 (6.5)	1.000
<i>VSD</i>	23 (3.9)	30 (5.0)	0.399
<i>PM rupture</i>	7 (1.2)	6 (1.0)	1.000
<i>Free wall rupture</i>	4 (0.7)	2 (0.3)	0.687
<i>Ventricular aneurysm</i>	12 (2.0)	6 (1.0)	0.234
Unstable Angina	39 (6.5)	20 (3.4)	0.016
PE	56 (9.4)	69 (11.6)	0.257
Valvular disease	144 (24.1)	144 (24.1)	1.000
Infective Endocarditis	69 (11.6)	70 (11.7)	1.000
AAD	88 (14.7)	78 (13.1)	0.452
Trauma	29 (4.9)	30 (5.0)	1.000
Other	109 (18.3)	140 (23.5)	0.033

PS, propensity score; MI, myocardial infarction, VSD, ventricular septum defect; PM, papillary muscle; PE, pulmonary embolism; AAD, acute aortic dissection

Table 3. Operative characteristics after PS-matching

Variable	PS-matched patients		
	No AF (597)	AF (597)	P _{value}
<i>Procedural characteristics</i>			
iv. inotropes	390 (65.3)	420 (70.4)	0.072
iv. nitrates	228 (38.2)	231 (38.7)	0.905
IABP	96 (16.1)	95 (15.9)	1.000
VAD pre-op	12 (2.0)	12 (2.0)	1.000
ECMO	10 (1.7)	19 (3.2)	0.131
Mechanical ventilation	223 (37.4)	225 (37.7)	0.952
<i>Urgency</i>			
Urgent	158 (26.5)	185 (31.0)	0.096
Emergent	287 (48.1)	273 (45.7)	0.451
Salvage	152 (25.5)	139 (23.3)	0.419
<i>Surgery</i>			
CPB time* (median [IQR])	131 [95-189]	131 [95-182]	0.712
X-clamp time* (median [IQR])	80 [51-106]	79 [53-112]	0.726
Redo surgery	63 (10.6)	103 (17.3)	0.001
MVR	123 (20.6)	135 (22.6)	0.439
AVR	106 (17.8)	97 (16.2)	0.538
TVPR	24 (4.0)	43 (7.2)	0.023
CABG	150 (25.1)	134 (22.4)	0.308
Post inf VSD	15 (2.5)	26 (4.4)	0.111
Aorta repair	110 (18.4)	101 (16.9)	0.544
ECMO (central cannulation)	30 (5.0)	36 (5.7)	0.527
VAD implantation	7 (1.2)	21 (3.5)	0.012
Trauma	29 (4.9)	30 (5.0)	1.000
Tumor	2 (0.3)	2 (0.3)	1.000
Embolectomy	6 (1.0)	18 (3.0)	0.021
Other	107 (17.9)	129 (21.6)	0.127

*missing data

PS, propensity score; IABP, intra-aortic balloon pump; iv., intravenous; OPCAB, Off-Pump Coronary Artery Bypass; CPB, cardiopulmonary bypass; LAAO, left atrial appendage occlusion; VSD, ventricular septal defect; SD, Standard Deviation.

Table 4. In-hospital outcomes after PS-matching

<i>Variable</i>	PS-matched patients		
	No AF (597)	AF (597)	P_{value}
30-day mortality	194 (32.5)	207 (34.7)	0.462
Cardiac tamponade and/or rethoracotomy for bleeding	71 (11.9)	82 (13.7)	0.387
Respiratory failure	95 (15.9)	117 (19.6)	0.112
Neurologic complications	45 (7.5)	46 (7.7)	1.000
Multiorgan failure	132 (22.1)	127 (21.3)	0.779
Gastrointestinal complications	14 (2.3)	21 (3.5)	0.303
Acute kidney failure and/or dialysis	74 (12.4)	85 (14.2)	0.394
Superficial sternal wound infection	9 (1.5)	10 (1.7)	1.000
Deep sternal wound infection	4 (0.7)	7 (1.2)	0.547
PPI	3 (0.5)	5 (0.8)	0.726
ECMO	48 (8.0)	61 (10.2)	0.228
ECMO days	5 [1, 7]	5 [3, 13]	0.261
IABP	71 (11.9)	74 (12.4)	0.859

PS, propensity score; AF, atrial fibrillation; PPI, permanent pacemaker implantation; ECMO, extracorporeal membrane oxygenation; IABP, intra-aortic balloon pump.

References

1. Hollenberg SM, Kavinsky CJ, Parrillo JE. Cardiogenic shock. *Ann Intern Med* 1999;131:47-59. doi: 10.7326/0003-4819-131-1-199907060-00010
2. Gong FF, Vaitenas I, Malaisrie SC, Maganti K. Mechanical Complications of Acute Myocardial Infarction: A Review. *JAMA Cardiol* 2021;6:341-349. doi: 10.1001/jamacardio.2020.3690
3. Khorsandi M, Dougherty S, Bouamra O, Pai V, Curry P, Tsui S et al. Extra-corporeal membrane oxygenation for refractory cardiogenic shock after adult cardiac surgery: a systematic review and meta-analysis. *J Cardiothorac Surg* 2017;12:55. doi: 10.1186/s13019-017-0618-0
4. Desch S. Revascularization strategies in cardiogenic shock after acute myocardial infarction. *Curr Opin Crit Care* 2019;25:379-383. doi: 10.1097/MCC.0000000000000623
5. Ibrahim M, Spelde AE, Gutsche JT, Cevasco M, Bermudez CA, Desai ND et al. Coronary Artery Bypass Grafting in Cardiogenic Shock: Decision-Making, Management Options, and Outcomes. *J Cardiothorac Vasc Anesth* 2021;35:2144-2154. doi: 10.1053/j.jvca.2020.09.108
6. Akodad M, Schurtz G, Adda J, Leclercq F, Roubille F. Management of valvulopathies with acute severe heart failure and cardiogenic shock. *Arch Cardiovasc Dis* 2019;112:773-780. doi: 10.1016/j.acvd.2019.06.009
7. Samsky MD, Morrow DA, Proudfoot AG, Hochman JS, Thiele H, Rao SV. Cardiogenic Shock After Acute Myocardial Infarction: A Review. *JAMA* 2021;326:1840-1850. doi: 10.1001/jama.2021.18323

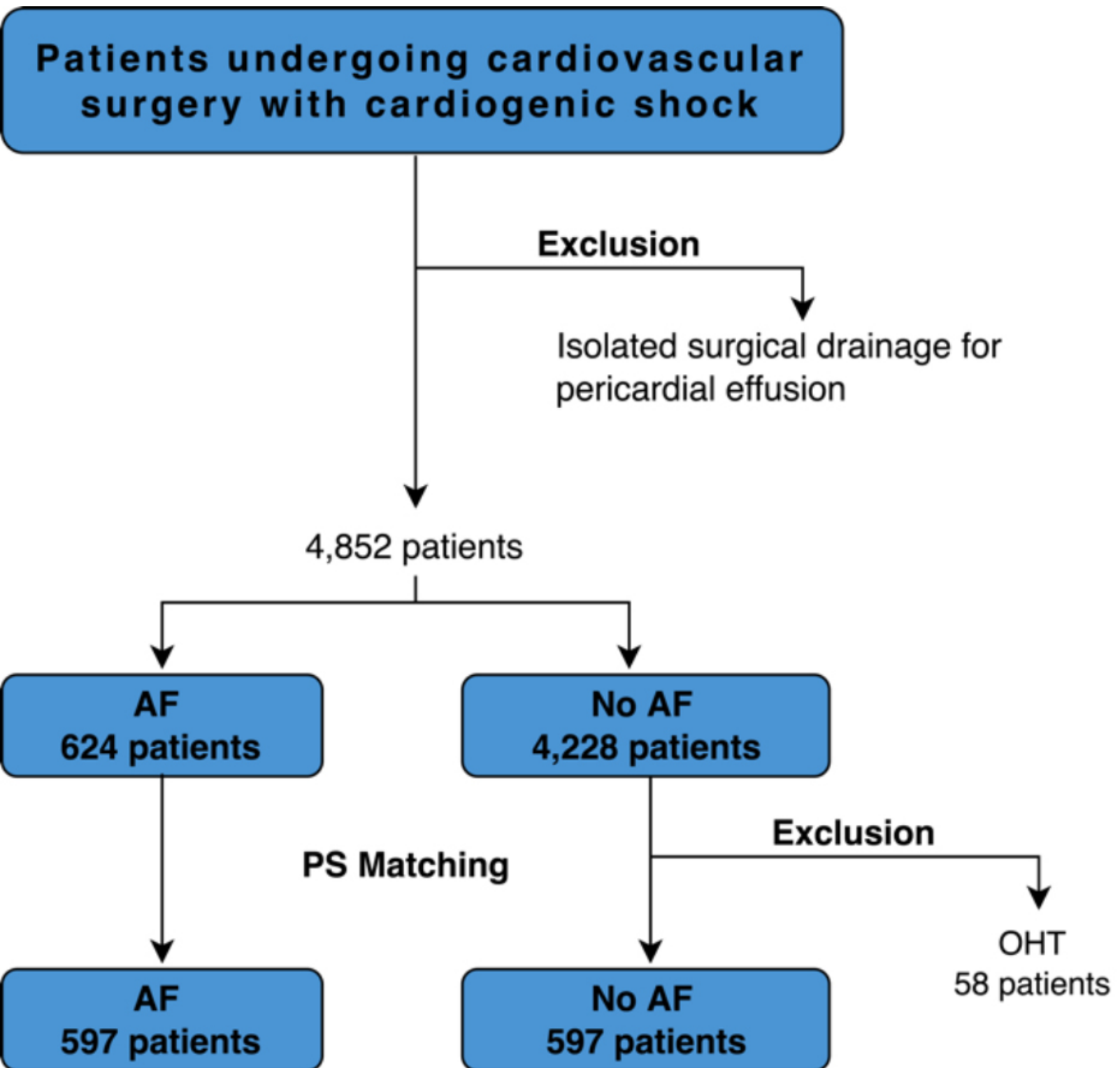
8. Pöss J, Köster J, Fuernau G, Eitel I, de Waha S, Ouarrak T, et al. Risk Stratification for Patients in Cardiogenic Shock After Acute Myocardial Infarction. *J Am Coll Cardiol* 2017;69:1913-1920. doi: 10.1016/j.jacc.2017.02.027
9. Beer BN, Jentzer JC, Weimann J, Dabboura S, Yan I, Sundermeyer J, et al. Early risk stratification in patients with cardiogenic shock irrespective of the underlying cause - the Cardiogenic Shock Score. *Eur J Heart Fail* 2022;24:657-667. doi: 10.1002/ejhf.2449
10. Rao P, Khalpey Z, Smith R, Burkhoff D, Kociol RD. Venoarterial Extracorporeal Membrane Oxygenation for Cardiogenic Shock and Cardiac Arrest. *Circ Heart Fail* 2018;11:e004905. doi: 10.1161/CIRCHEARTFAILURE.118.004905
11. Morin DP, Bernard ML, Madias C, Rogers PA, Thihalolipavan S, Estes NA 3rd. The State of the Art: Atrial Fibrillation Epidemiology, Prevention, and Treatment. *Mayo Clin Proc* 2016;91:1778-1810. doi: 10.1016/j.mayocp.2016.08.022
12. Gammie JS, Haddad M, Milford-Beland S, Welke KF, Ferguson TB, Jr., O'Brien SM et al. Atrial fibrillation correction surgery: Lessons from the society of thoracic surgeons national cardiac database. *Ann Thorac Surg* 2008;85:909-914. doi: 10.1016/j.athoracsur.2007.10.097
13. Malaisrie SC, McCarthy PM, Kruse J, Matsouaka R, Andrei AC, Grau-Sepulveda MV et al. Burden of preoperative atrial fibrillation in patients undergoing coronary artery bypass grafting. *J Thorac Cardiovasc Surg* 2018;155:2358-2367. doi: 10.1016/j.jtcvs.2018.01.069
14. Saxena A, Virk SA, Bowman S, Bannon PG. Systematic review and meta-analysis on the impact of preoperative atrial fibrillation on short- and long-term outcomes after aortic valve replacement. *J Cardiovasc Surg (Torino)* 2017;58:943-950 doi:10.23736/S0021-9509.17.09814-7

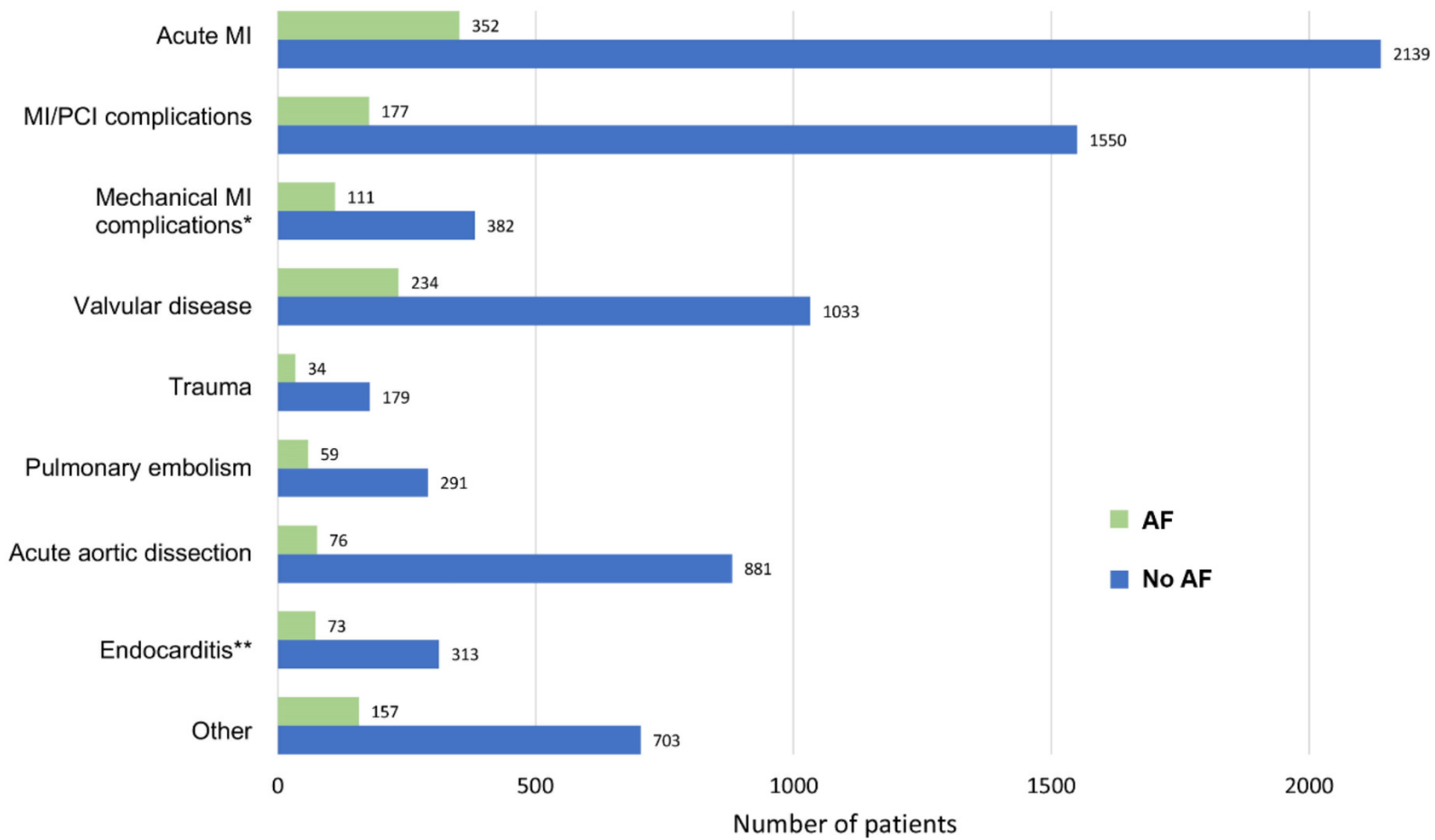
15. Feistritzer HJ, Desch S, Zeymer U, Fuernau G, de Waha-Thiele S, Dudek D et al. Prognostic Impact of Atrial Fibrillation in Acute Myocardial Infarction and Cardiogenic Shock. *Circ Cardiovasc Interv* 2019;12:e007661. doi: 10.1161/CIRCINTERVENTIONS.118.007661
16. Sonu G, Rupak D, Bishoy H, Abhishek D, Gautam K, Rajesh S et al. The Impact of Atrial Fibrillation on In-Hospital Outcomes in Patients With Acute Myocardial Infarction Complicated by Cardiogenic Shock Undergoing Coronary Revascularization with Percutaneous Ventricular Assist Device Support. *J Atr Fibrillation*. 2020;12:2179. doi: 10.4022/jafib.2179
17. Vallabhajosyula S, Patlolla SH, Verghese D, Ya'Qoub L, Kumar V, Subramaniam AV et al. Burden of Arrhythmias in Acute Myocardial Infarction Complicated by Cardiogenic Shock. *Am J Cardiol* 2020;125:1774-1781. doi: 10.1016/j.amjcard.2020.03.015
18. Kowalewski M, Jasiński M, Staromłyński J, Zembala M, Widenka K, Brykczyński M et al. KROK Investigators. On-Pump vs Off-Pump coronary artery bypass surgery in atrial fibrillation. Analysis from the polish national registry of cardiac surgery procedures (KROK). *PLoS On*. 2020;15:e0231950. doi: 10.1371/journal.pone.0231950
19. Suwalski P, Kowalewski M, Jasiński M, Staromłyński J, Zembala M, Widenka K et al. KROK Investigators. Survival after surgical ablation for atrial fibrillation in mitral valve surgery: Analysis from the Polish National Registry of Cardiac Surgery Procedures (KROK). *J Thorac Cardiovasc Surg* 2019;157:1007-1018.e4. doi: 10.1016/j.jtcvs.2018.07.099

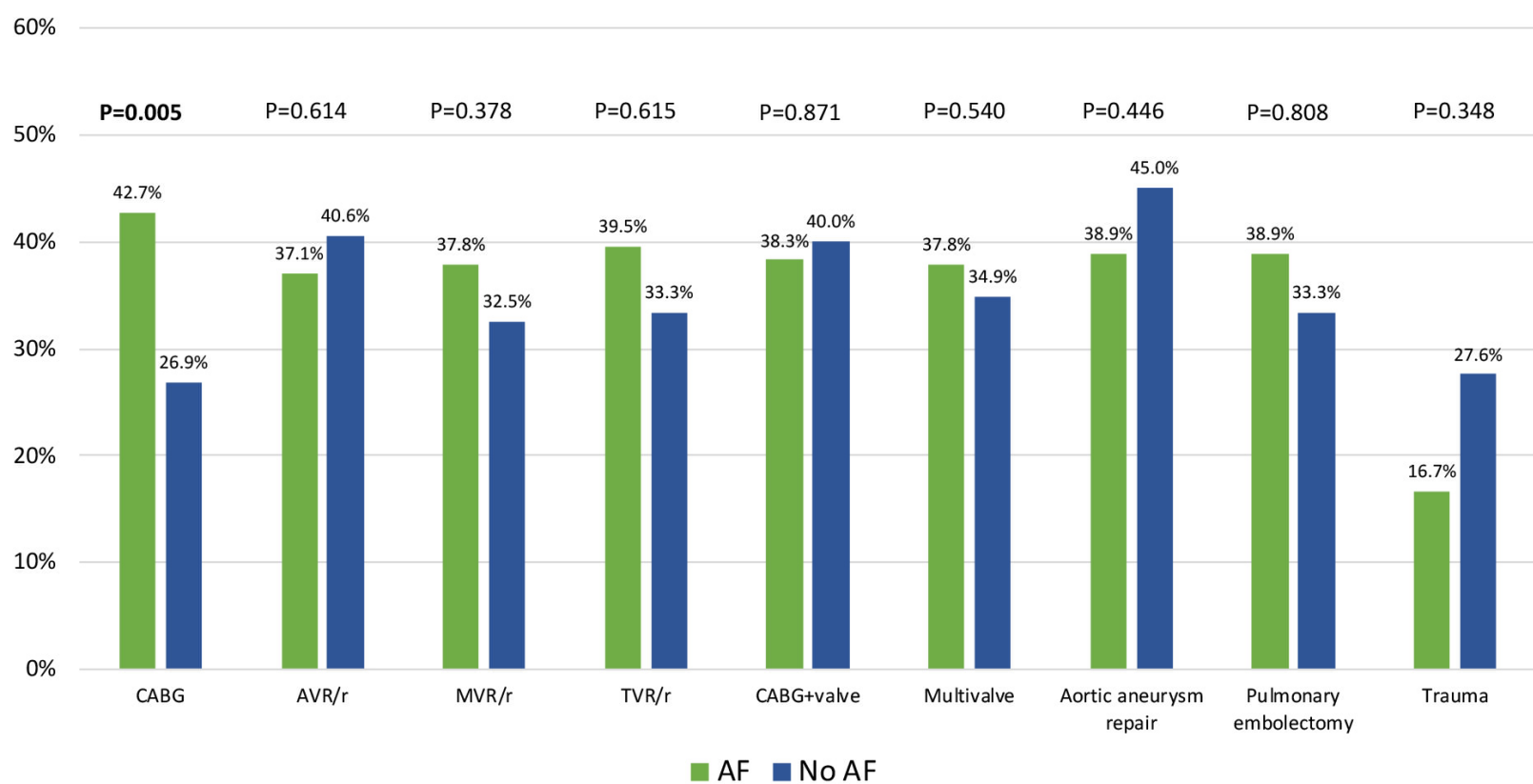
20. Suwalski P, Kowalewski M, Jasiński M, Staromłyński J, Zembala M, Widenka K et al. Surgical ablation for atrial fibrillation during isolated coronary artery bypass surgery. *Eur J Cardiothorac Surg* 2020;57:691-700. doi: 10.1093/ejcts/ezz298
21. Hochman JS, Sleeper LA, Webb JG, Sanborn TA, White HD, Talley JD et al. Early revascularization in acute myocardial infarction complicated by cardiogenic shock. SHOCK Investigators. Should We Emergently Revascularize Occluded Coronaries for Cardiogenic Shock. *N Engl J Med* 1999;341:625-34. doi: 10.1056/NEJM199908263410901
22. Ponikowski P, Voors AA, Anker SD, Bueno H, Cleland JGF, Coats AJS et al. ESC Scientific Document Group. 2016 ESC Guidelines for the diagnosis and treatment of acute and chronic heart failure: The Task Force for the diagnosis and treatment of acute and chronic heart failure of the European Society of Cardiology (ESC) Developed with the special contribution of the Heart Failure Association (HFA) of the ESC. *Eur Heart J* 2016;37:2129-2200. doi: 10.1093/eurheartj/ehw128
23. Nashef SA, Roques F, Sharples LD, Nilsson J, Smith C, Goldstone AR et al. EuroSCORE II. *Eur J Cardiothorac Surg* 2012;41:734-44; discussion 744-5. doi: 10.1093/ejcts/ezs043
24. Spinelli I, Scardapane S, Uncini A. Missing data imputation with adversarially-trained graph convolutional networks. *Neural Netw* 2020;129:249-260. doi: 10.1016/j.neunet.2020.06.005
25. Okoli GN, Sanders RD, Myles P. Demystifying propensity scores. *Br J Anaesth* 2014;112:13-5. doi: 10.1093/bja/aet290
26. Heeringa J, van der Kuip DA, Hofman A, Kors JA, van Herpen G, Stricker BH, et al. Prevalence, incidence and lifetime risk of atrial fibrillation: the Rotterdam study. *Eur Heart J* 2006;27:949-53. doi: 10.1093/eurheartj/ehi825

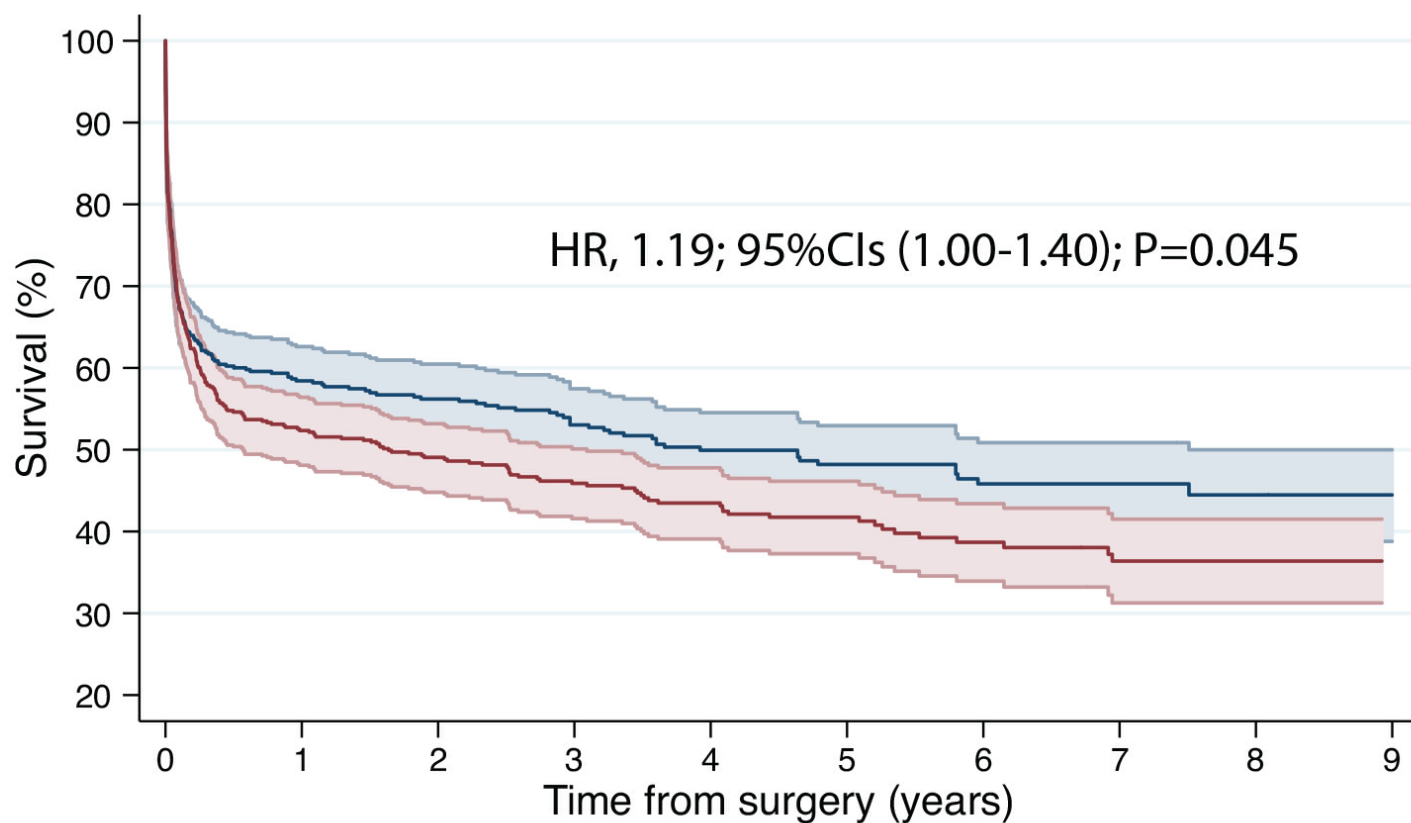
27. Ruddox V, Sandven I, Munkhaugen J, Skattebu J, Edvardsen T, Otterstad JE. Atrial fibrillation and the risk for myocardial infarction, all-cause mortality and heart failure: A systematic review and meta-analysis. *Eur J Prev Cardiol* 2017;24:1555-1566. doi: 10.1177/2047487317715769
28. McCarthy PM, Davidson CJ, Kruse J, Lerner DJ, Braid-Forbes MJ, McCrea MM, et al. Prevalence of atrial fibrillation before cardiac surgery and factors associated with concomitant ablation. *J Thorac Cardiovasc Surg* 2020;159:2245-2253.e15. doi: 10.1016/j.jtcvs.2019.06.062
29. de Waha S, Schoene K, Fuernau G, Desch S, Eitel I, Pöss J, et al. Prognostic impact of atrial fibrillation in cardiogenic shock complicating acute myocardial infarction: a substudy of the IABP-SHOCK II trial. *Clin Res Cardiol* 2018;107:233-240. doi: 10.1007/s00392-017-1175-1
30. Gaudino M, Glineur D, Mazza A, Papadatos S, Farina P, Etienne PY, et al. Long-Term Survival and Quality of Life of Patients Undergoing Emergency Coronary Artery Bypass Grafting for Postinfarction Cardiogenic Shock. *Ann Thorac Surg* 2016;101:960-966. doi: 10.1016/j.athoracsur.2015.08.066
31. Acharya D, Gulack BC, Loyaga-Rendon RY, Davies JE, He X, Brennan JM, et al. Clinical Characteristics and Outcomes of Patients With Myocardial Infarction and Cardiogenic Shock Undergoing Coronary Artery Bypass Surgery: Data From The Society of Thoracic Surgeons National Database. *Ann Thorac Surg*. 2016;101:558-566. doi: 10.1016/j.athoracsur.2015.10.051
32. Khaladj N, Bobylev D, Peterss S, Guenther S, Pichlmaier M, Bagaev E, et al. Immediate surgical coronary revascularisation in patients presenting with acute myocardial infarction. *J Cardiothorac Surg* 2013;8:167. doi: 10.1186/1749-8090-8-167

33. Cox ML, Gulack BC, Thibault DP, He X, Williams ML, Thourani VH, et al.
Outcomes after coronary artery bypass grafting in patients with myocardial infarction, cardiogenic shock and unresponsive neurological state: analysis of the Society of Thoracic Surgeons Database. *Eur J Cardiothorac Surg* 2018;54:710-716. doi: 10.1093/ejcts/ezy114
34. Fujita T, Yamamoto H, Kobayashi J, Fukushima S, Miyata H, Yamashita K, et al.
Mitral valve surgery for ischemic papillary muscle rupture: outcomes from the Japan cardiovascular surgery database. *Gen Thorac Cardiovasc Surg* 2020;68:1439-1446. doi: 10.1007/s11748-020-01418-y
35. Kilic A, Sultan I, Chu D, Wang Y, Gleason TG. Mitral Valve Surgery for Papillary Muscle Rupture: Outcomes in 1342 Patients From The Society of Thoracic Surgeons Database. *Ann Thorac Surg* 2020;110:1975-1981. doi: 10.1016/j.athoracsur.2020.03.097









Number at risk

No AF	597	248	216	173	128	103	72	45	26	10
AF	597	269	219	165	133	89	64	42	23	11

— No AF 95% CI — AF 95% CI