

1 **Imprecision nutrition? Duplicate meals result in unreliable individual**
2 **glycemic responses measured by continuous glucose monitors**
3 **across three dietary patterns in adults without diabetes**

4
5 *Aaron Hengist¹, Juen Guo¹, Kevin D Hall^{1*}*

6
7 ¹National Institute of Diabetes and Digestive and Kidney Diseases, NIH, Bethesda, MD,
8 USA

9 *Corresponding Author: Kevin D Hall, kevin.hall@nih.gov

10
11 Supported by the Intramural Research Program of the National Institutes of Health,
12 National Institute of Diabetes & Digestive & Kidney Diseases.

13
14 Abbreviations: CGM, continuous glucose monitor, ICC, intra-class correlation coefficient

15 **Abstract**

16 **Background:** Continuous glucose monitors (CGMs) are being used to characterize
17 postprandial glycemc responses and thereby provide personalized dietary advice to
18 minimize glycemc excursions. However, the efficacy of such advice depends on reliable
19 CGM responses.

20 **Objective:** To explore within-subject variability of CGM responses to duplicate meals in
21 an inpatient setting.

22 **Methods:** CGM data were collected in two controlled feeding studies (NCT03407053
23 and NCT03878108) in 30 participants without diabetes capturing 948 meal responses in
24 duplicate ~1 week apart from three dietary patterns. One study used two different CGMs
25 (Abbott Freestyle Libre Pro and Dexcom G4 Platinum) whereas the other study used
26 only Dexcom. We calculated the incremental area under the curve (iAUC) for each 2-h
27 post-meal period and compared within-subject iAUCs using the same CGM for the
28 duplicate meals using linear correlations, intra-class correlation coefficients (ICC),
29 Bland-Altman analyses, and compared individual variability of glycemc responses to
30 duplicate meals versus different meals using standard deviations (SDs).

31 **Results:** There were weak to moderate positive linear correlations between within-
32 subject iAUCs for duplicate meals (Abbott $r=0.47$, $p<0.0001$, Dexcom $r=0.40$, $p<0.0001$),
33 with low within-participant reliability indicated by ICC (Abbott 0.31, Dexcom 0.16).
34 Bland-Altman analyses indicated wide limits of agreement (Abbott -31.4 to 31.5 mg/dL,
35 Dexcom -32.3 to 31.6 mg/dL) but no significant bias of mean iAUCs for duplicate meals
36 (Abbott 0.1 mg/dL, Dexcom -0.3 mg/dL). Individual variability of glycemc responses to
37 duplicate meals was similar to that of different meals evaluated each diet week for both

38 Abbott ($SD_{\text{duplicate}} = 10.7$ mg/dL , $SD_{\text{week 1}} = 12.4$ mg/dL, $SD_{\text{week 2}} = 11.6$ mg/dL, $p=0.38$)
39 and Dexcom ($SD_{\text{duplicate}} = 11.8$ mg/dL, $SD_{\text{week 1}} = 12.2$ mg/dL, $SD_{\text{week 2}} = 12.4$ mg/dL,
40 $p=0.80$).

41 **Conclusions:** Individual postprandial CGM responses to duplicate meals were
42 unreliable in adults without diabetes. Personalized diet advice based on CGM
43 measurements in adults without diabetes requires more reliable methods involving
44 aggregated repeated measurements.

45

46 This secondary analysis contains data from two trials registered at clinicaltrials.gov
47 (NCT03407053 and NCT03878108).

48

49 **Keywords:** continuous glucose monitor, CGM, glycemia, glucose variability,
50 personalized nutrition, precision nutrition

51 **Introduction**

52 Postprandial glycemc responses to different foods as measured by continuous glucose
53 monitors (CGM) are highly variable between individuals, with some people exhibiting
54 large glycemc excursions in response to one food compared to another whereas a
55 different person might experience the opposite results (1, 2). Such observations provide
56 the rationale for personalizing diet advice to minimize glycemc excursions by
57 attempting to identify the foods that result in reliably low postprandial glucose in each
58 person (2, 3). The fundamental assumption of such precision dietary advice is that
59 repeated glycemc responses to the same meal within an individual are much less
60 variable than their responses to different meals. However, this assumption has not been
61 rigorously tested.

62
63 We investigated the reliability of within-subject postprandial CGM responses to
64 duplicate ad libitum meals consumed ~1 week apart by 15 participants residing at the
65 NIH Clinical Center Metabolic Clinical Research Unit during two inpatient controlled
66 feeding studies whose primary results have been reported elsewhere (4, 5). Study
67 participants were presented with three daily meals from 7-day rotating menus for two
68 weeks each such that each meal was provided in duplicate. Participants experienced
69 three dietary patterns with one being a minimally processed plant-based, low-fat diet
70 and the other two patterns had moderate macronutrient compositions but either high in
71 ultra-processed or unprocessed foods. We excluded data from a very low carbohydrate
72 ketogenic dietary pattern because CGM responses during this diet were minimal (5).

73 **Methods**

74 We performed an exploratory analysis of data from two clinical research protocols
75 approved by the institutional review board of the National Institute of Diabetes and
76 Digestive and Kidney Diseases and are registered at clinicaltrials.gov (NCT03407053
77 and NCT03878108). Participants provided written informed consent and eligibility
78 criteria for both studies were (1) ages 18–50 years; (2) body mass index >18.5 kg/m²;
79 and (3) weight stable ($<5\%$ change in past 6 months). Both studies were within-subject,
80 random-order crossover designs where participants were exposed to two diets for 14
81 days each on 7-day rotating menus, consuming each meal twice (once during week 1
82 and once during week 2). After excluding data from the very low carbohydrate ketogenic
83 dietary pattern, this enabled comparison of up to 21 repeated meals within each of the 3
84 dietary patterns. The daily menus had three meals (breakfast, lunch, and dinner), where
85 the order within day was always fixed and the time of day when each meal was
86 consumed was similar between the first and second week. Furthermore, the sequence
87 of the daily menu was the same on the first and second week except in cases when the
88 respiratory chamber day (whose menu was fixed within each diet pattern) had to be
89 scheduled on a different day due to availability.

90
91 Meals were provided to participants alone in their inpatient rooms and photographs of
92 the meals have been published previously alongside the primary outcomes (4, 5).
93 Participants were instructed eat as much or as little food as they wanted and asked to
94 not intentionally change their weight throughout the study. All foods were weighed to the
95 nearest 0.1 g before and after consumption, and energy intake was calculated using

96 ProNutra software (v.3.4, Viocare). A limitation of these studies with respect to our
97 analyses of post-meal glycemc responses is that they included bottled water and
98 snacks available throughout the day, but the timing of their consumption was not
99 recorded.

100
101 Interstitial glucose concentrations were obtained from two brands of monitor: Abbott
102 Freestyle Libre Pro (Abbott) and Dexcom G4 Platinum (Dexcom). In NCT03407053,
103 some participants wore both Abbott and Dexcom, and in NCT03878108 study
104 participants wore Dexcom. The Abbott device records glucose every 15 minutes and the
105 Dexcom every 5 minutes. For accurate postprandial analysis, only duplicate meals with
106 measured start time and sufficient data availability were included. For Abbott the mean
107 (range) of duplicate meals within-participant was 28 (11 to 34) from 14 participants
108 providing 392 total comparisons and for Dexcom the mean (range) of duplicate meals
109 within-participant was 19 (2 to 38) from 30 participants providing 556 total comparisons.
110 Data were aligned to the nearest 15-minute (Abbott) or 5-minute (Dexcom) CGM
111 reading for calculation of post-meal responses. Baseline was assigned as the first time-
112 point after the meal was provided. The 2-hour postprandial glucose incremental area
113 under the curve (iAUC) was calculated for each meal using the trapezoid method, with
114 dips below baseline assigned a negative value for iAUC (i.e., netAUC from (6)). Values
115 of iAUC were reported as time-averaged glucose concentrations across the 2-h
116 postprandial period.

117

118 Statistical analyses and data visualization were performed in R (v4.2.3) and GraphPad
119 Prism (v9.5.0). Major axis regression was used to plot trends between meal 1 and meal
120 2 using lmodel2 in R. Simple linear correlation was calculated using Pearson's
121 correlation coefficient (r), with <0.4 interpreted as weak, 0.4 to 0.8 interpreted as
122 moderate, and >0.8 interpreted as strong correlation. Repeatability was estimated by
123 calculating the intra-class correlation coefficient (ICC) for glucose iAUCs. ICC was
124 calculated using the following formula: ICC = participant variance / (participant variance
125 + residual variance), which was generated from a linear mixed effects model with
126 participant and residual error as random effects and meal and eating occasion as fixed
127 effects (7). ICC values below 0.5 are considered as indicating poor reliability between
128 measures (8).

129
130 To examine individual glycemic variability in response to duplicate meals as compared
131 with different meals, we partitioned the total iAUC variance between diet pattern, meal
132 type (breakfast, lunch, dinner), menu day, and duplicate meals between successive
133 weeks to compute the standard deviation (SD) of duplicate iAUC responses as follows:

$$134 \quad SD_{duplicate} = \sqrt{\left[\frac{\sum_{diet} \sum_{meal} \sum_{menu} \sum_{duplicate} (iAUC_{diet,meal,menu,duplicate} - \langle iAUC_{diet,meal,menu} \rangle)^2}{df} \right]}, \text{ where}$$

135 df is the degrees of freedom and $\langle iAUC_{diet,meal,menu} \rangle$ is the average iAUC over duplicate
136 meals. Similarly, we computed individual SDs of the iAUC responses to different meals
137 on each week of 7-day rotating menus as follows:

$$138 \quad SD_{week} = \sqrt{\left[\frac{\sum_{diet} \sum_{meal} \sum_{menu} (iAUC_{diet,meal,menu} - \langle iAUC_{diet,meal} \rangle)^2}{df} \right]}$$

139 where df is the degrees of freedom and $\langle iAUC_{\text{diet,meal}} \rangle$ is the average $iAUC$ over the 7-
140 day week of menus. One-way ANOVA with Bonferroni correction was used to compare
141 SDs of week 1, week 2, and duplicate meal responses. Energy intake of meals in week
142 1 and week 2 were compared using a paired t-test. Significance was accepted as
143 $p \leq 0.05$.

144

145 **Results**

146 **Glycemic responses to the same meals eaten on separate occasions are not well-** 147 **matched**

148 We investigated 30 participants whose characteristics are shown in **Table 1** who were
149 presented with duplicate meals on two consecutive weeks exactly 7 days apart for 85%
150 of Abbott measurements and 72% of Dexcom measurements. **Figure 1A** plots the $iAUC$
151 responses to meals consumed on week 2 versus the duplicate meals on week 1
152 measured in the same participants using the Abbott device. **Figure 1B** plots analogous
153 data obtained using the Dexcom device. Regardless of CGM, there were weak to
154 moderate positive linear correlations between the within-subject $iAUC$ responses to
155 duplicate meals across all dietary patterns (Abbott $r=0.47$, $p<0.0001$, Dexcom $r=0.40$,
156 $p<0.0001$). Linear correlations were similar when meals were split into breakfast, lunch,
157 and dinner (Abbott breakfast $r=0.41$, lunch $r=0.55$, dinner $r=0.44$; Dexcom breakfast
158 $r=0.40$, lunch $r=0.41$, dinner $r=0.35$, all $p<0.0001$).

159

160 Intra-class correlation coefficients (ICCs) were 0.31 for Abbott and 0.16 for Dexcom,
161 indicating that there was a low tendency for glucose responses to be similar in duplicate

162 meals in the same participant. Across all duplicate meals and subjects, Bland-Altman
163 plots are shown in **Figures 1C** and **1D** indicating a low mean bias between iAUC
164 responses to duplicate meals (Abbott 0.1 mg/dL, Dexcom -0.3 mg/dL), but there was a
165 large variability indicated by the wide 95% limits of agreement (LoA) for both CGMs
166 (Abbott -31.4 to 31.5 mg/dL, Dexcom -32.3 to 31.6 mg/dL).

167
168 **Figures 2A** and **2B** plot the differences in glycemic responses to duplicate meals for
169 each individual participant using the Abbott and Dexcom devices, respectively, and
170 show highly variable glycemic responses when the same participant consumed
171 duplicate meals on separate weeks, regardless of the CGM device. However, the iAUC
172 bias was relatively low for most participants when averaged across different duplicate
173 meals. **Figures 2C** and **2D** plot the same data separated by individual duplicate meals
174 as measured using the Abbott and Dexcom devices, respectively, and indicate highly
175 variable individual glycemic responses to duplicate meals, regardless of the CGM
176 device. Nevertheless, the iAUC bias was relatively low for most meals when averaged
177 across participants.

178
179 **Similar individual glycemic response variability to duplicate versus different**
180 **meals**

181 Surprisingly, we found that everyone's glycemic response variability to duplicate meals
182 was similar to the variability in their glycemic responses to different meals. **Figure 3A**
183 plots the SD of the glycemic responses in each individual participant to different meals
184 eaten in either week 1 or week 2 along with the SD of their glycemic responses to

185 duplicate meals for the Abbott device. **Figure 3B** plots analogous data from the Dexcom
186 device. Regardless of device, the variability in the glycemic response to duplicate meals
187 was similar to each participant's glycemic response variability to duplicate meals
188 (Abbott: $SD_{\text{week 1}} = 12.4$ mg/dL, $SD_{\text{week 2}} = 11.6$ mg/dL, $SD_{\text{duplicate}} = 10.7$ mg/dL, $p=0.38$;
189 Dexcom: $SD_{\text{week 1}} = 12.2$ mg/dL, $SD_{\text{week 2}} = 12.4$ mg/dL, $SD_{\text{duplicate}} = 11.8$ mg/dL, $p=0.80$).

190

191 **Potential factors affecting variability in glycemic response to duplicate meals**

192 We explored numerous factors relating to the study design and behavior that might
193 contribute to explaining the glycemic response variability to duplicate meals. Firstly,
194 there was a moderate positive linear correlation between differences in baseline
195 glucose and differences in iAUC (Abbott $r=0.42$ $p<0.0001$, Dexcom $r=0.50$ $p<0.0001$),
196 suggesting baseline glucose concentrations may have contributed to the low
197 repeatability of glucose iAUC.

198

199 Because food intake was ad libitum in our studies, we investigated whether differences
200 in meal energy intake between duplicate meal weeks affected our findings. For Abbott,
201 mean (95% CI) meal energy intake was 777 (746 to 808) kcal in week 1 and 744 (712 to
202 777) kcal in week 2 ($p=0.0007$). For Dexcom, mean (95% CI) meal energy intake was
203 784 (752 to 816) kcal in week 1 and 763 (733 to 793) kcal in week 2 ($p=0.02$). Energy
204 intake between duplicate meals was strongly positively correlated (Abbott $r=0.83$
205 $p<0.0001$, Dexcom $r=0.85$ $p<0.0001$) and there was a weak positive correlation
206 between differences in energy intake and differences in glucose iAUC (Abbott $r=0.24$
207 $p<0.0001$, Dexcom $r=0.13$ $p=0.002$). However, repeating our analyses using only

208 duplicate meals where energy intake was within 100 kcal between meals did not
209 materially affect our results regarding the iAUC correlations (Abbott $n=201$, $r=0.43$
210 $p<0.0001$, Dexcom $n=277$, $r=0.44$ $p<0.0001$) or ICC (Abbott 0.29, Dexcom 0.17) or
211 Bland-Altman analyses (Abbott bias -0.5 mg/dL, LoA -32.0 to 31.0 mg/dL
212 Dexcom bias -0.8 mg/dL, LoA -32.4 to 30.8 mg/dL).

213
214 In addition to the three daily meals provided, participants were also given snacks that
215 could be consumed at any time of day. To examine whether our results may have been
216 affected by differences in snack intake between days with duplicate meals, we filtered
217 the data such that snack intake was <200 kcal on both duplicate meal days resulting in
218 136 duplicate meals available for Abbott and 207 for Dexcom. For Abbott, mean (95%
219 CI) meal energy intake was 791 (738 to 845) kcal in week 1 and 748 (694 to 802) kcal in
220 week 2 ($p=0.008$) and mean (95%) snack intake was 39 (28 to 50) kcal/d in week 1 and
221 32 (23 to 40) kcal/d in week 2 ($p=0.31$). For Dexcom, mean (95% CI) meal energy
222 intake was 707 (658 to 757) kcal in week 1 and 703 (657 to 749) kcal in week 2
223 ($p=0.72$) and mean (95%) snack intake was 29 (22 to 37) kcal/d in week 1 and 20 (15 to
224 26) kcal/d in week 2 ($p=0.05$). Repeating our analyses using only meals where snack
225 intake was less than 200 kcal did not materially affect our results regarding the iAUC
226 correlations (Abbott $r=0.51$ $p<0.0001$, Dexcom $r=0.44$ $p<0.0001$), ICC (Abbott 0.34,
227 Dexcom 0.22), or Bland-Altman analyses (Abbott bias 0.4 mg/dL, LoA -27.4 to 28.2
228 mg/dL; Dexcom bias 1.7 mg/dL, LoA -29.2 to 33.4 mg/dL).

229

230 Discussion

231 CGM devices are becoming widely used in people without diabetes as part of
232 commercial precision nutrition programs that provide personalized diet advice (9),
233 however CGM responses need to be precise and accurate to be useful (10). We
234 recently demonstrated that postprandial glycemic responses using two different brands
235 of CGMs simultaneously worn on different anatomical locations resulted in only
236 moderate correlations of within-subject postprandial responses to simultaneously
237 measured multicomponent meals ($r=0.68$) and modest concordance of the meal
238 rankings by iAUC (Kendal rank correlation = 0.43) (11). A subsequent study using
239 simple test meals (i.e., muffins, milkshakes, and energy bars) formulated to have
240 substantial differences in glycemic load confirmed that simultaneous within-subject
241 postprandial iAUCs measured using different CGM devices were only moderately
242 correlated ($r=0.61$) but the rank order of these simple meals according to iAUC was
243 more concordant (Kendall rank correlation = 0.68) than the rankings of multicomponent
244 meals in our previous study (12). Interestingly, using identical CGMs resulted in much
245 better agreement ($r=0.97$; Kendall rank correlation = 0.87) suggesting that a given CGM
246 device provides valid measures of postprandial glycemic responses to simple test meals
247 on a single occasion (12). However, this does not address the reliability of within-subject
248 responses to repeated multicomponent meals.

249
250 The fundamental assumption of personalized or “precision” nutrition is that an
251 individual’s responses to repeated meals are less variable than their responses to
252 different meals. Otherwise, it would be impossible to provide reliable advice to avoid
253 meals that result in poor responses. Previous work found relatively reliable postprandial

254 CGM responses to a small number of duplicate simple meals like bread (2) or muffins
255 (1), but such meals are not representative of multicomponent meals that are the focus
256 of personalized dietary advice in the real-world. Surprisingly, our study found that the
257 reliability of postprandial CGM responses to many duplicate multicomponent meals was
258 poor and that the within-subject variability to duplicate meals was similar to the
259 variability across different meals. Perhaps this is why recent randomized trials
260 comparing personalized nutrition interventions focused on glycemic responses
261 observed small effects for mean glucose (within 7 mg/dL, 0.39 mmol/L) and HbA1c
262 (within 0.14%) (13), or no differences in glycemic variability and HbA1c (14) as
263 compared to general diet advice.

264
265 The low within-subject reliability of postprandial CGM responses to duplicate
266 multicomponent meals in our study occurred under highly controlled metabolic ward
267 conditions where meal order within each day was standardized and was typically
268 preceded by a previous standardized day. Whilst less reflective of free-living conditions,
269 such inpatient controlled feeding studies reduce the amount of variability explained by
270 behavioral factors, enabling better understanding of the amount of glycemic variability
271 that can be explained by ingestion of meals, providing a better indication of
272 measurement error (15, 16). However, despite the strengths of our inpatient controlled
273 feeding design, our study had several limitations. First, the primary aims of the original
274 studies were to measure ad libitum energy intake differences between dietary patterns
275 and therefore duplicate meals were not necessarily consumed in identical amounts,
276 although energy intake of duplicate meals was highly correlated and repeating the

277 analyses using only meals within 100 kcal of each other did not change interpretation.
278 Furthermore, despite the regimented meal order and timing achieved with
279 implementation of the 7-day rotating menus, snacks were available for consumption at -
280 any time of day which may have differentially affected meal responses. Re-analysis
281 using only duplicate meals on days when snack intake was within 200 kcal or when the
282 energy intake difference between duplicate meals was <100 kcal did not materially
283 affect our results.

284
285 Due to the inpatient setting, our study has limited generalizability to free-living people.
286 However, free-living behaviors will likely further increase the within-subject variability of
287 CGM responses to similar meals. A plethora of modifiable behavioral factors can also
288 influence postprandial glycemic responses to the same meal within an individual and
289 the reasons for the variable responses to repeated meals in our study are presently
290 unknown. In our study, meals were ad libitum, but participants tended to eat similar
291 amounts of the repeated meals and differences in energy intake did not seem to
292 account for the differences in glycemic response, as the variability was similar when
293 only analyzing meals with similar energy intake within 100 kcal (data not shown).
294 However, variations in the sequence of foods consumed within the repeated
295 multicomponent ad libitum meals may have contributed to the variability because food
296 sequence has been previously shown to result in varying glycemic responses in people
297 with and without type 2 diabetes (17-20). Physical activity differences may have also
298 played a role, as previous studies have shown that breaking up prolonged sitting with
299 small amounts of physical activity during the postprandial period reduces postprandial

300 glycemia (21-23), and even leg fidgeting may have an effect (24). Sleep quality and
301 bedtime has recently been associated with changes in CGM-derived measures of
302 postprandial glucose (25), so variations in sleep quality may have contributed to
303 differences in the studies presented. Importantly, if such behavioral factors are indeed
304 important contributors to meal glyceemic responses, then an enormous amount of data
305 may be required to capture these behavioral determinants and reliably predict an
306 individual's glucose excursions and thereby provide personalized "precision" diet
307 advice.

308
309 Intriguingly, we found a low mean bias of within-subject iAUCs in response to multiple
310 duplicate meals suggesting that it may be possible to reliably estimate within-subject
311 postprandial responses to the same meals provided that enough repeated
312 measurements are made. How many repeated postprandial CGM measurements in
313 response to the same meals are required within each individual to provide reliable
314 personalized estimates is a critical question for future research, but our results suggest
315 that two measurements are too few even under highly standardized metabolic ward
316 conditions.

317
318 In conclusion, our data suggest that personalized diet advice is unlikely to be reliable if it
319 is based primarily on postprandial CGM measurements obtained using very few
320 repeated measurements in adults without diabetes. Instead, precision nutrition requires
321 more reliable methods involving aggregated repeated measurements.

322 **Acknowledgements**

323 This work was supported by the Intramural Research Program of the NIH, National
324 Institute of Diabetes & Digestive & Kidney Diseases under award number
325 1ZIADK013037. We thank the nursing and nutrition staff at the NIH Metabolic Clinical
326 Research Unit for their invaluable assistance with this study. We thank the study
327 participants for their invaluable contribution.

328

329 **Author contributions**

330 JG and KDH conceptualized and designed the research, AH, JG, and KDH analyzed
331 and interpreted the data, and critically reviewed, drafted, and approved the final
332 manuscript.

333

334 **Conflict of interest**

335 The authors report no conflicts of interest.

336 **Tables**

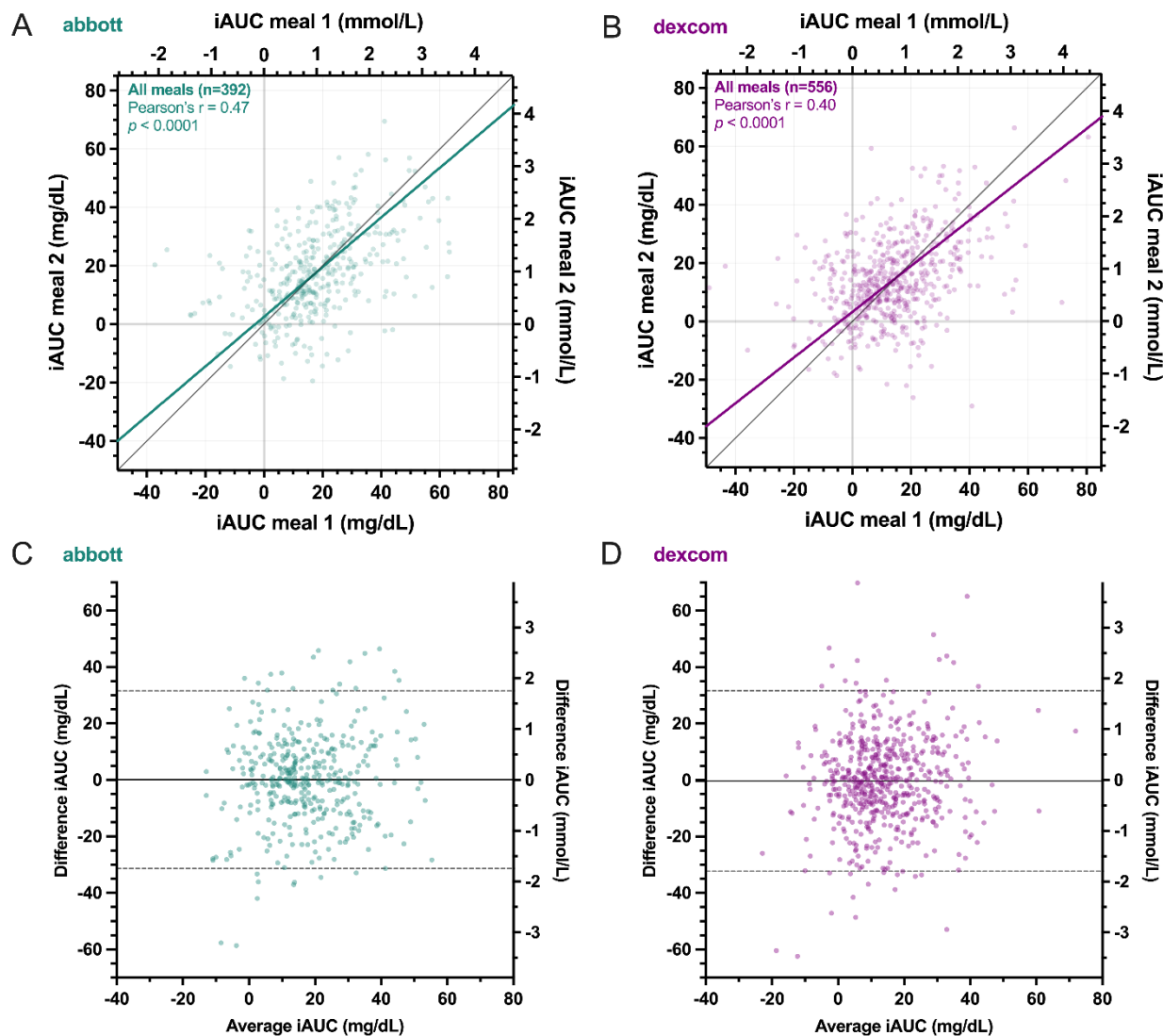
337 **Table 1.** Baseline characteristics of participants included in analyses. Data mean \pm SD.

	Abbott (n=14)	Dexcom (n=30)
Sex (F,M)	F=8, M=6	F=15, M=15
Age (y)	31 \pm 8	30 \pm 7
Body mass (kg)	73.0 \pm 13.3	80.6 \pm 19.4
Body mass index (kg/m ²)	25.5 \pm 5.2	27.6 \pm 6.3
Body fat (%)	28.9 \pm 11.1	31.9 \pm 9.9

338

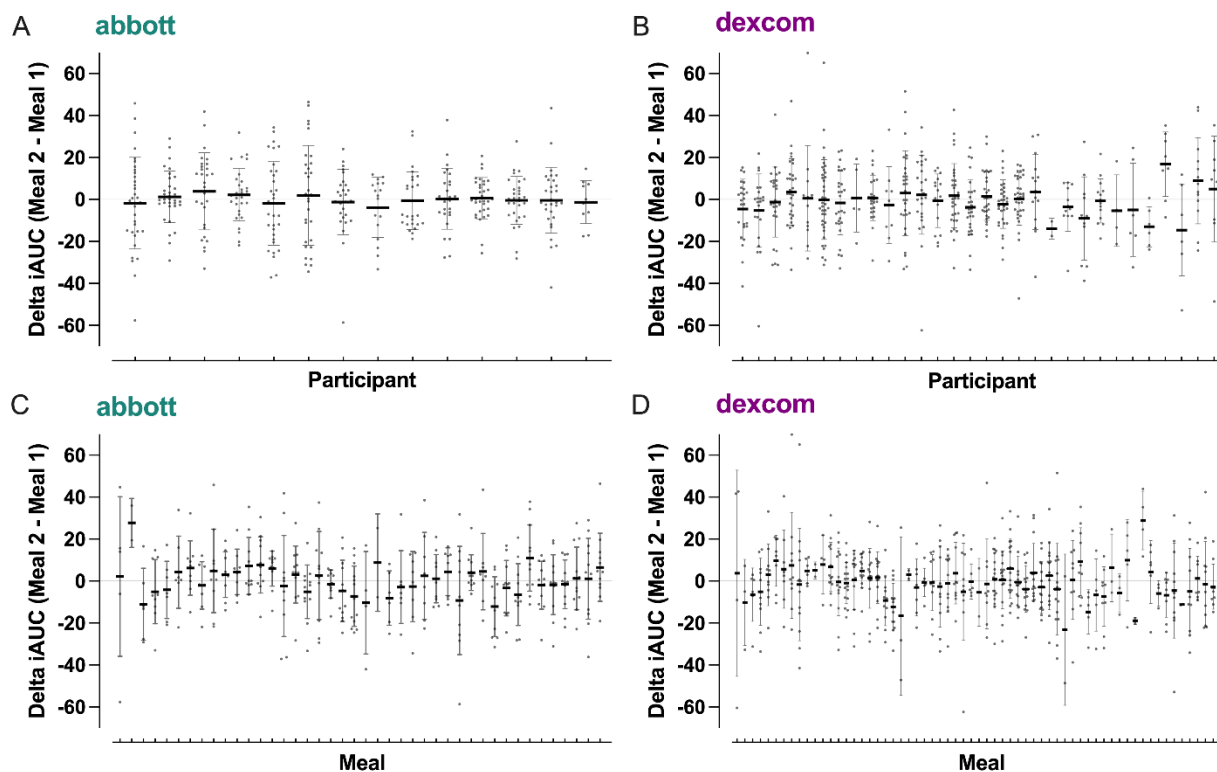
339 **Figures**

340
341 **Figure 1.** Comparison of incremental area under the curve (iAUC) of postprandial
342 glucose responses to duplicate meals using A) Abbott and B) Dexcom continuous
343 glucose monitors. Trendline is major axis regression. Bland-Altman plots of the iAUC
344 differences between duplicate meals versus the average of both measurements using
345 C) Abbott and D) Dexcom devices. Solid line indicates mean bias and dashed lines
346 indicate 95% limits of agreement.
347



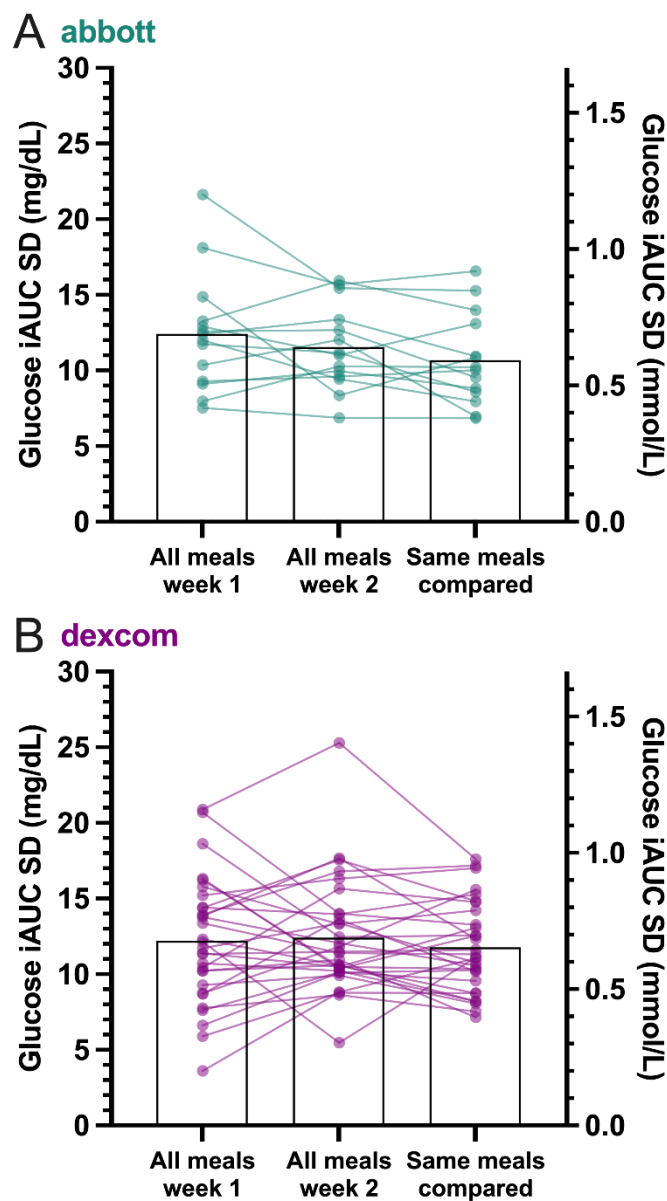
348 **Figure 2.** Mean \pm SD difference and individual comparisons of duplicate meals
349 organized by participant using A) Abbott and B) Dexcom devices. Each data point is the
350 within-participant iAUC difference between duplicate meals. Mean \pm SD and individual
351 comparisons of duplicate meals ordered by meal pairing (across all participants) using
352 C) Abbott and D) Dexcom CGMs. Each data point is a duplicate meal eaten in week 2
353 minus the same meal eaten in week 1 with data from all participants who consumed that
354 meal (abbott has 42 total meals for comparison across the 14 days of rotating menu, 14
355 days x 3 meals; dexcom has 63 total meals for comparison across 21 days of rotating
356 menu, 21 days x 3 meals).

357
358



359

360 **Figure 3.** Mean and individual participant standard deviations (SD) of postprandial
361 glucose responses between different meals across week 1, different meals across week
362 2, and duplicate meals between weeks using A) Abbott and B) Dexcom devices.



363 References

- 364 1. Berry SE, Valdes AM, Drew DA, Asnicar F, Mazidi M, Wolf J, et al. Human
365 postprandial responses to food and potential for precision nutrition. *Nat Med.*
366 2020;26(6):964-73. doi: 10.1038/s41591-020-0934-0.
- 367 2. Zeevi D, Korem T, Zmora N, Israeli D, Rothschild D, Weinberger A, et al. Personalized
368 Nutrition by Prediction of Glycemic Responses. *Cell.* 2015;163(5):1079-94. doi:
369 10.1016/j.cell.2015.11.001.
- 370 3. Mendes-Soares H, Raveh-Sadka T, Azulay S, Edens K, Ben-Shlomo Y, Cohen Y, et al.
371 Assessment of a Personalized Approach to Predicting Postprandial Glycemic Responses
372 to Food Among Individuals Without Diabetes. *JAMA Netw Open.* 2019;2(2):e188102.
373 doi: 10.1001/jamanetworkopen.2018.8102.
- 374 4. Hall KD, Ayuketah A, Brychta R, Cai HY, Cassimatis T, Chen KY, et al. Ultra-
375 Processed Diets Cause Excess Calorie Intake and Weight Gain: An Inpatient Randomized
376 Controlled Trial of Ad Libitum Food Intake (vol 30, pg 67, 2019). *Cell Metabolism.*
377 2019;30(1):226-. doi: 10.1016/j.cmet.2019.05.020.
- 378 5. Hall KD, Guo J, Courville AB, Boring J, Brychta R, Chen KY, et al. Effect of a plant-
379 based, low-fat diet versus an animal-based, ketogenic diet on ad libitum energy intake.
380 *Nat Med.* 2021;27(2):344-53. doi: 10.1038/s41591-020-01209-1.
- 381 6. Wolever TM. Effect of blood sampling schedule and method of calculating the area under
382 the curve on validity and precision of glycaemic index values. *The British journal of*
383 *nutrition.* 2004;91(2):295-301. doi: 10.1079/bjn20031054.
- 384 7. Bates D, Machler M, Bolker BM, Walker SC. Fitting Linear Mixed-Effects Models
385 Using lme4. *J Stat Softw.* 2015;67(1):1-48. doi: DOI 10.18637/jss.v067.i01.
- 386 8. Koo TK, Li MY. A Guideline of Selecting and Reporting Intraclass Correlation
387 Coefficients for Reliability Research. *J Chiropr Med.* 2016;15(2):155-63. doi:
388 10.1016/j.jcm.2016.02.012.
- 389 9. Jaklevic MC. Start-ups Tout Continuous Glucose Monitoring for People Without
390 Diabetes. *JAMA.* 2021;325(21):2140-2. doi: 10.1001/jama.2021.3789.
- 391 10. Betts JA, Gonzalez JT. Personalised nutrition: What makes you so special? *Nutr Bull.*
392 2016;41(4):353-9. doi: 10.1111/nbu.12238.
- 393 11. Howard R, Guo J, Hall KD. Imprecision nutrition? Different simultaneous continuous
394 glucose monitors provide discordant meal rankings for incremental postprandial glucose
395 in subjects without diabetes. *Am J Clin Nutr.* 2020;112(4):1114-9. doi:
396 10.1093/ajcn/nqaa198.
- 397 12. Merino J, Linenberg I, Bermingham KM, Ganesh S, Bakker E, Delahanty LM, et al.
398 Validity of continuous glucose monitoring for categorizing glycemic responses to diet:
399 implications for use in personalized nutrition. *Am J Clin Nutr.* 2022;115(6):1569-76. doi:
400 10.1093/ajcn/nqac026.
- 401 13. Ben-Yacov O, Godneva A, Rein M, Shilo S, Kolobkov D, Koren N, et al. Personalized
402 Postprandial Glucose Response-Targeting Diet Versus Mediterranean Diet for Glycemic
403 Control in Prediabetes. *Diabetes care.* 2021;44(9):1980-91. doi: 10.2337/dc21-0162.
- 404 14. Kharmats AY, Popp C, Hu L, Berube L, Curran M, Wang C, et al. A randomized clinical
405 trial comparing low-fat with precision nutrition-based diets for weight loss: impact on
406 glycemic variability and HbA1c. *Am J Clin Nutr.* 2023. doi:
407 10.1016/j.ajcnut.2023.05.026.

- 408 15. Hall KD. Challenges of human nutrition research. *Science*. 2020;367(6484):1298-300.
409 doi: 10.1126/science.aba3807.
- 410 16. Hall KD, Heymsfield SB, Kemnitz JW, Klein S, Schoeller DA, Speakman JR. Energy
411 balance and its components: implications for body weight regulation. *Am J Clin Nutr*.
412 2012;95(4):989-94. doi: 10.3945/ajcn.112.036350.
- 413 17. Shukla AP, Andono J, Touhamy SH, Casper A, Iliescu RG, Mauer E, Shan Zhu Y,
414 Ludwig DS, Aronne LJ. Carbohydrate-last meal pattern lowers postprandial glucose and
415 insulin excursions in type 2 diabetes. *BMJ Open Diabetes Res Care*. 2017;5(1):e000440.
416 doi: 10.1136/bmjdr-2017-000440.
- 417 18. Shukla AP, Dickison M, Coughlin N, Karan A, Mauer E, Truong W, et al. The impact of
418 food order on postprandial glycaemic excursions in prediabetes. *Diabetes Obes Metab*.
419 2019;21(2):377-81. doi: 10.1111/dom.13503.
- 420 19. Shukla AP, Iliescu RG, Thomas CE, Aronne LJ. Food Order Has a Significant Impact on
421 Postprandial Glucose and Insulin Levels. *Diabetes care*. 2015;38(7):e98-e9. doi:
422 10.2337/dc15-0429.
- 423 20. Trico D, Filice E, Trifiro S, Natali A. Manipulating the sequence of food ingestion
424 improves glycemic control in type 2 diabetic patients under free-living conditions. *Nutr*
425 *Diabetes*. 2016;6(8):e226. doi: 10.1038/nutd.2016.33.
- 426 21. Chen YC, Betts JA, Walhin JP, Thompson D. Adipose Tissue Responses to Breaking
427 Sitting in Men and Women with Central Adiposity. *Medicine and science in sports and*
428 *exercise*. 2018;50(10):2049-57. doi: 10.1249/MSS.0000000000001654.
- 429 22. Dunstan DW, Kingwell BA, Larsen R, Healy GN, Cerin E, Hamilton MT, et al. Breaking
430 up prolonged sitting reduces postprandial glucose and insulin responses. *Diabetes care*.
431 2012;35(5):976-83. doi: 10.2337/dc11-1931.
- 432 23. Peddie MC, Bone JL, Rehrer NJ, Skeaff CM, Gray AR, Perry TL. Breaking prolonged
433 sitting reduces postprandial glycemia in healthy, normal-weight adults: a randomized
434 crossover trial. *Am J Clin Nutr*. 2013;98(2):358-66. doi: 10.3945/ajcn.112.051763.
- 435 24. Pettit-Mee RJ, Ready ST, Padilla J, Kanaley JA. Leg Fidgeting During Prolonged Sitting
436 Improves Postprandial Glycemic Control in People with Obesity. *Obesity*.
437 2021;29(7):1146-54. doi: 10.1002/oby.23173.
- 438 25. Tsereteli N, Vallat R, Fernandez-Tajes J, Delahanty LM, Ordovas JM, Drew DA, et al.
439 Impact of insufficient sleep on dysregulated blood glucose control under standardised
440 meal conditions. *Diabetologia*. 2022;65(2):356-65. doi: 10.1007/s00125-021-05608-y.
- 441