

Page

Title: Individual healthcare-seeking pathways for tuberculosis in Nigeria's private sector during the COVID-19 pandemic

Authors:

Charity Oga-Omenka^{1,2}, Lauren Rosapep³, Lavanya Huria^{2,4}, Nathaly Aguilera Vasquez², Bolanle Olusola-Faleye³, Mohammad Abdullah Heel Kafi², Angelina Sassi^{2,4}, Chimdi Nwosu⁵, Benjamin Johns³, Abdu Adamu³, Obioma Chijioke-Akaniro⁶, Chukwuma Anyaike⁶, Madhukar Pai^{2,3}

Affiliations:

1. School of Public Health Sciences, University of Waterloo, Ontario, Canada
2. McGill International TB Centre, Montreal, Canada
3. Sustaining Health Outcomes through the Private Sector (SHOPS) Plus/Abt Associates
4. Department of Epidemiology, Biostatistics and Occupational Health, McGill University, Montreal, Canada
5. VizSight Analytics Inc, British Columbia, Canada
6. National Tuberculosis and Leprosy Control Program, Nigeria

Acknowledgments

We would like to thank the Abts Associates team, particularly Elaine Baruwa and all the field staff and providers that participated in this survey. We thank the COVET study team and the McGill International TB centre, particularly Caroline Vadnais, for sustained support throughout the process of this study. The authors also thank Guy Stallworthy, Sameer Gupta and Kayla Laserson of the Bill and Melinda Gates Foundation for their support.

Funding:

This work was supported by the Bill and Melinda Gates Foundation (COVID Impact on Private Health Markets Grant INV-022420 to MP and JD). The study was implemented by the USAID-funded SHOPS Plus Project in Nigeria (Contract #: AID-OAA-A-15- 00067, <https://www.usaid.gov/>). EB, LR, BOF, AA and BJ were affiliated with the SHOPS Plus project and not direct recipients of a USAID contract. None of the co-authors are employees of the funding agency. The funders provided inputs on the study design, but had no role in data collection and analysis, decision to publish, or preparation of the manuscript.

1 **Abstract**

2

3 **Background:** Pre-COVID-19, individuals with TB in Nigeria were often underdiagnosed and
4 untreated. Care for TB was mostly in the public sector while only 15% of new cases in 2019
5 were from the private sector. Reports highlighted challenges in accessing care in the private
6 sector, which accounted for 67% of all initial care-seeking. Our study examined patients' health
7 seeking pathways for TB in Nigeria's private sector, and explored any changes to care pathways
8 during COVID, based on patients' perspectives.

9

10 **Design/Methods:** We conducted 180 cross-sectional surveys and 20 in-depth interviews with
11 individuals having chest symptoms attending 18 high volume private clinics and hospitals in
12 Kano and Lagos States. Questions focused on sociodemographic characteristics, health-seeking
13 behavior and pathways to care during the COVID-19 periods. All surveys and interviews were
14 conducted in May 2021.

15

16 **Results:** Most participants were male (n=111, 62%), with average age of 37. Half (n=96, 53.4%)
17 sought healthcare within a week of symptoms, while few (n=20, 11.1%) waited over 2 months.
18 TB positive individuals had more health-seeking delays, and TB negative had more provider
19 delays. On average, participants visited 2 providers in Kano and 1.69 in Lagos, with 61 (75%) in
20 Kano and 48 (59%) in Lagos visiting other providers before the recruitment facility. Private
21 providers were the initial encounters for most participants (n=60 or 66.7% in Kano, n=83 or
22 92.3% in Lagos). Most respondents (164 or 91%) experienced short-lived pandemic-related
23 restrictions, particularly during the lockdowns, affecting access to transportation, and closed
24 facilities.

25

26 **Conclusions:** This study showed a few challenges in accessing TB healthcare in Nigeria,
27 necessitating continued investment in healthcare infrastructure and resources, particularly in
28 the private sector. Understanding the different care pathways and delays in care provides
29 opportunities for targeted interventions to improve deployment of services closer to where
30 patients first seek care.

31

32 Background

33

34 Before the COVID-19 pandemic, tuberculosis (TB) was the leading cause of infectious disease
35 deaths globally [1]. Of the 10.6 million estimated cases in 2021 worldwide, only 6.4 million (60%)
36 were diagnosed and notified [1]. Since the COVID-19 pandemic, global TB notifications and
37 treatment have dropped, and deaths increased, erasing progress made in the last two decades
38 [1]. This decline suggests increases in community transmission and infections.

39

40 Globally, several high burden TB countries reported that the COVID-19 pandemic and control
41 measures significantly impacted case notifications, treatment, and other services for TB [1-3].
42 The End TB Strategies calls for early diagnosis and treatment of TB [4], yet delays are persistent
43 in many high burden countries, including Nigeria, particularly in the private sector [5-8]. Extended
44 delays are associated with increased risks of transmission, morbidity, and mortality [9-12].

45

46 Patient pathways analyses are useful approaches to understanding patients' care seeking
47 patterns and how they access available services [13, 14]. Individual patient pathway analyses
48 can provide insights on the number of attempts individuals make to find TB care, and the
49 missed opportunities for appropriate TB care. This information is necessary to surmount the
50 problem of poor access to high quality TB care and is key to finding the missing millions of TB
51 cases that go undiagnosed globally every year [1, 13, 15]. Pathway analyses have been used to
52 highlight misalignment between demand and available resources at the macro level [14], or
53 show the different care-seeking decisions at the micro level, as well as the types and numbers
54 of providers that patients seek care with before getting diagnosed and treated [16, 17]. Several
55 aspects of care pathways have been highlighted in literature, including time delays between
56 symptom recognition, health seeking, diagnosis and treatment, as well as the number of
57 healthcare encounters, type and sector of providers encountered, and point of diagnosis [14,
58 17, 18].

59

60 Nigeria, a high burden TB country, had an estimated 467,000 incident cases in 2021[1]. Case
61 notification for TB in Nigeria has come mainly from the public sector. Only 15% of new TB cases
62 in 2019 were reported from the private sector, even though it accounts for approximately 67%
63 of initial TB care-seeking [19]. Nigeria recorded 88,388 confirmed cases of COVID-19 in 2020,
64 with over 266,000 cases as of December 2022 [20]. During the initial lockdowns in March-April
65 2020, there were several reports indicating significant disruptions to TB services [21-24]. Nigeria
66 and other high burden TB countries reported delays in care-seeking for respiratory symptoms
67 due to fear of COVID-19 diagnosis [23, 25-28]. However, TB case finding began to rebound in
68 June 2020 and by the second wave in December 2020 to March 2021, TB notifications had fully
69 recovered to pre-pandemic levels [24]. This made Nigeria an outlier for pandemic recovery
70 among other high-burden countries [1]. Private sector notifications significantly increased,
71 contributing to the overall rise in TB notifications since 2020 [1, 29]. It remains unclear if there
72 are long-lasting impacts of COVID-19 on healthcare seeking for chest symptoms in Nigeria's
73 private healthcare sector.

74

75 The USAID-funded *Strengthening Health Outcomes through the Private Sector (SHOPS) Plus*
76 Nigeria project aimed to strengthen the private sector's capacity to detect and treat TB in
77 alignment with international standards and the national TB control plan. By training and
78 supporting over 2,900 private providers, including clinical providers, laboratories, community
79 pharmacists and proprietary patent medicine vendors (PPMVs) in Lagos and Kano States, the
80 project contributed to substantial increases in private sector TB notifications between 2017 and
81 2020 [30]. Our study utilized cross sectional surveys and qualitative interviews with individuals
82 with diagnosed and presumptive TB within the SHOPS Plus network in Kano and Lagos, to assess
83 how healthcare seeking and pathways may have changed in the private sector. This study aimed
84 to examine in Nigeria whether there were any long-lasting impacts of COVID on care-seeking
85 given that the apparent disruptions in care were relatively short-lived.

86

87 *Conceptual framework*

88 Our conceptual framework (*Fig 1*) is derived from existing literature [17, 31-33] and highlights
89 two main types of delays along pathways to TB care: health-seeking and health system delays.
90 Health-seeking delays refer to the time it takes from symptom onset to patients recognizing
91 their symptoms and seeking care from a healthcare provider. Health-seeking is influenced by
92 lack of TB knowledge, stigma, cost of seeking care, amongst other factors. Health system delays
93 occur once patients have sought care and can be further divided into provider delays and
94 treatment delays. Provider delays occur healthcare providers delay diagnosis due to low index
95 of suspicion of TB, limited diagnostic tools, misdiagnosis, or delays in making referrals,
96 conducting tests or transmitting results. Treatment delays occur when patients are diagnosed
97 with TB, but there is a delay in initiating treatment, due to a lack of medication or equipment,
98 insufficient staff, or poor communication between providers and patients. Diagnostic delays
99 refer to the time it takes from the onset of symptoms (individual-level) to the confirmation of
100 TB diagnosis (health-system level). Lack of knowledge of TB (symptoms, diagnosis and
101 treatment) is a common factor contributing to diagnostic delay [5].

102

103 There is some consensus that delays should not exceed 2-4 weeks from onset of symptoms to
104 seek care, 3-7 days for testing (provider delay) using the current WHO-recommended TB
105 diagnostics, and 1-2 days for treatment initiation to optimise patient outcomes [34-36]. The
106 WHO considers as unethical any delay in treatment initiation in the presence of a positive
107 diagnosis or a strong presumption of TB [35].

108

109 Previous studies conducted in Lagos [5] and rural Nigeria [7] found that health-seeking delays
110 were more common than provider delays, contributing more to overall total delay. The factors
111 associated with these delays can be categorized as individual-level (knowledge, attitudes, and
112 behaviours), or structural-level (relating to healthcare facilities, providers, doctors, etc.).

113

114 These delays can lead to 3 major gaps or missed opportunities in accessing TB care: Gap 1
115 includes those who never access TB testing, Gap 2 are those who access testing but are not
116 diagnosed, and Gap 3 includes those diagnosed but not treated. These gaps result in prolonged
117 illness, disease transmission, increased risk of drug-resistant TB, and death [1, 32, 33]. Studies

118 done in Nigeria before the pandemic identified Gap 1 as the biggest challenge in TB control,
119 followed by Gap 2 [6, 32, 37, 38].

120

121 **Methods**

122 *Study design, population and sampling*

123 We conducted pathway analyses using mixed methods, to survey 180 individuals and conduct
124 20 in-depth interviews during the second COVID-19 wave in May 2021 (*Appendix 1*). This study
125 was part of a larger research project in 3 high burden countries. We previously published the
126 timelines of the COVID epi-curve, TB notifications and the timing of our data collection in
127 Nigeria [24]. Our study took place among individuals seeking TB care in 18 private facilities in
128 Kano and Lagos, the states with the highest TB burden and levels of private sector activity [30],
129 and with estimated population of 14.7 million and 13 million respectively in 2021 [39]. We
130 sampled active providers within the SHOPS Plus program network, 1,084 in Kano and 1,317 in
131 Lagos, out of which were 217 and 472 clinical facilities respectively.

132

133 To ensure even geographic distribution of recruitment facilities within the states, we used a non-
134 probabilistic quota sampling to select 18 high volume TB clinical facilities within the SHOPS Plus
135 network (*Appendix 2*). We prioritized higher volume facilities to minimize overall facility and
136 network burden and increase recruitment efficiency. We included the three highest volume
137 facilities (by total TB notifications) in each senatorial zone, ensuring only one facility per local
138 government areas (LGA), resulting in a total of nine facilities per state.

139

140 We visited each consenting recruitment facility and developed a list of eligible patients from the
141 facility's National TB program mandated presumptive and treatment registers, from which
142 participants were randomly selected. Two types of patients were recruited – patients confirmed
143 to be negative for TB (negative sputum test result in the register); and patients recently
144 diagnosed (positive sputum test result for TB) receiving or scheduled for TB treatment within the
145 same facility. All recruited patients were over 18 years old, HIV negative, and had confirmed
146 results between January and May 2021 (to minimize survey recall bias). We excluded previously
147 confirmed COVID-19 cases, individuals unable to provide a sputum sample, patients initiating
148 treatment at another facility, and those with missing sputum results or a history of anti-TB
149 treatment in the past 6 months. Within each recruitment facility, we surveyed ten participants
150 and conducted additional in-depth interviews 1-2 participants.

151

152 Eligible individuals were contacted by facility staff to explain the study's purpose and assess
153 their initial willingness to participate. A date, time and place (the clinical facility, patient's
154 home, or place of work) were agreed upon for the survey and interviews.

155

156 *Data collection*

157 Our study instruments focused on various aspects, including the onset of symptoms and care-
158 seeking pathway, interactions with healthcare providers from initial encounters to TB diagnosis
159 and treatment initiation, healthcare decision-making and use during COVID-19, perspectives on
160 the pandemic, and the impact of COVID-19 on patient care.

161

162 To ensure accuracy, the study tools were translated into local languages (Yoruba and Hausa),
163 back translated to English, pretested and piloted. Survey instruments were programmed into
164 SurveyCTO and field officers were trained for each survey, and only those who performed
165 satisfactorily were deployed. Precautionary measures against COVID-19 were implemented
166 prior to survey implementation, and verbal informed consent was obtained before interviews.
167 Transport costs were reimbursed for participants who preferred interviews in the facility.
168 Completed tools were uploaded to the SurveyCTO server. We maximally varied interview
169 participants by location, TB status, and gender.

170

171 Interviews, which lasted 24 to 55 minutes on average, were conducted in English, with
172 respondents encouraged to request translation into or respond in Nigerian Pidgin, Yoruba or
173 Hausa if needed. All interviews were audio-recorded and transcribed, with translations from
174 Yoruba and Hausa languages by fluent translators.

175

176 ***Data analysis and pathway construction***

177 Our analysis involved descriptive statistics, construction of care pathways and logistic
178 regressions. We weighted the data to address non-response and ensure the similarity between
179 responders and non-responders in terms of background characteristics [40, 41]. We used
180 logistic regression with covariates to calculate non-response weight, and predictive
181 probabilities of survey response were calculated derived. Unweighted mean of probabilities
182 matched the 70% unweighted response rate in dataset. [3]. The non-response weight was
183 determined by inverting the predictive probabilities [41], resulting in a sum equal to the sample
184 size.

185

186 We used descriptive statistics to analyze demographic characteristics of non-responders,
187 considering both weighted and unweighted data. Univariate Pearson's chi-square (X²) tests
188 assessed associations between individual characteristics, TB status, private sector TB care
189 delivery, impact of COVID, using weighted and unweighted cases.

190

191 We constructed individual patient-level pathways using stacked bar charts, which depict the
192 chronological order in which individuals encountered various types of healthcare providers
193 leading up to diagnosis and treatment. To create these sequencing charts, we accounted for
194 points of diagnosis (including laboratories, community outreaches and traditional healers) even
195 where the participants themselves did not acknowledge these as unique provider encounters.

196

197 Logistic regressions (weighted) were utilized to examine the relationship between patients'
198 characteristics and symptoms with their utilisation of private providers as the initial point of
199 seeking healthcare, the number of provider encounters, as well as the use of multiple
200 providers. We reported the odds ratio with 95% confidence intervals, considering a p-value
201 of < 0.05 as statistically significant.

202

203 Statistical analysis was performed using the open-source programming language R (version
204 4.0.3) and R Studio (version 1.4.1106). Transcripts were coded inductively and deductively by
205 two coauthors, CO and LH, using the Quirkos software (version 1.61), with an initial codebook
206 developed from 2 transcripts. Codes and themes were double-checked by CO, and the thematic
207 analysis reviewed by the research team for alignment with study objectives.

208

209 ***Ethical considerations***

210 Our study received ethical approval from the McGill University Health Centre (MUHC) Research
211 Ethics Board (REB), with approval number Covid BMGF / 2021-7197. We also obtained approval
212 from the health research ethics committee (HREC) in both States, including from the Lagos
213 State University Teaching Hospital (LASUTH) and Kano State Ministry of Health (MoH). We also
214 obtained letters of introduction from Abt Associates to the MoH, National Association of Patent
215 and Proprietary Medicines (NAPPMED), Association of Community Pharmacists in Nigeria
216 (ACPN), and heads of the target facilities. All survey and interview participants gave written or
217 verbal consent.

218

219 **Results**

220 ***Characteristics of participants and non-response***

221 Out of 337 patients contacted (*Appendix 3*), 180 participants completed the survey and 20
222 participated in the in-depth interviews. Higher non-response rates were observed among
223 participants from Kano State (62.5%) and those who tested negative for TB (54%). Gender and
224 age distributions were similar for both surveyed and non-surveyed participants, except for the
225 55+ age group, where non-surveyed rate was higher (18.8% vs 12.2%).

226

227 The participants (*Table 1*) were predominantly male (62%), married (53%) especially in Kano
228 State (58 vs 49% in Lagos), with an average age of 37 years. Participants had in Kano had more
229 dependent relatives on average (6) than in Lagos (3). Larger proportions were self-employed
230 (43%), had a secondary school education (34%). More participants lived within a 2km radius
231 from a public facility (48%), or a private facility (54%).

232

233

234 ***Health-seeking and health system delays***

235 Half of the 180 participants (n=96, 53.4%) sought care with a provider within a week of noticing
236 their symptoms, with 17.8% seeking care within the first 2 days (*Table 2*). Only very few
237 patients (n=20, 11.1%) waited for 2 months and above before seeking care.

238

239 Health-seeking and provider delays were experienced more by participants diagnosed with TB
240 (38% and 43% *Fig 2a*), with 14% of them experiencing treatment delays. Participants from
241 Lagos (29%, *Fig 2b*) experienced more health-seeking delays. Provider and treatment delays
242 were more in Kano (40% and 10%) compared to in Lagos (28% and 4%).

243

244 Out of 180 participants, (n=71, 39%) had their sole provider encounter at the study recruitment
245 facilities (private clinics or hospitals), which included 3 individuals who had previously been
246 diagnosed at community outreaches (*Table 2*). *Fig 2c* presents the number of participants and

247 the varying time delays at each provider encounter. Among 109 participants who visited other
248 providers before the recruitment facility, 55 had their initial encounter within a week, 25
249 waited 1-4 weeks, and 29 waited over a month. Out of the 33 who consulted two additional
250 providers, 8 waited 1-7 days from the first encounter, 16 waited 1-4 weeks, and 9 waited for
251 over a month. Among 8 who visited 3 providers, 4 waited 1-7 days following the second
252 encounter, 1 waited 1-4 weeks, and 3 waited for more than a month. Of the 2 who visited 4
253 providers, 1 waited 1-7 days, and the other waited 1-2 months.

254
255 At the recruitment facility, 96 of 180 participants waited 1-7 days, 38 waited 1-4 weeks and 46
256 waited more than 1 month. Of those who waited more than a month, the majority were
257 individuals who had visited other providers. Delays between encounters increase with each
258 additional provider encounter, particularly with the 3rd and 4th encounters. Most TB patients
259 were initiated on treatment within 2 days of diagnosis (n=34, 75% in Kano; n=32, 73% in Lagos).

260
261 From the qualitative interviews, many participants, regardless of TB status, reported health-
262 seeking delays as they waited until their symptoms became prolonged. Symptom minimisation
263 was a very common theme as most participants did not take coughing to be a serious health
264 issue, at first (*Fig 3*). Participants assumed that the cough would subside, and participants self-
265 medicated. Some participants mentioned that they were also afraid of getting infected with or
266 being diagnosed with COVID-19. Provider delays were mostly due to misdiagnosis and delayed
267 referral to TB testing sites. All TB patients interviewed in Kano and Lagos were initiated on
268 treatment within 2 days of diagnosis.

269 270 **Individual patient pathways**

271 On average, participants had 2 provider encounters in Kano, and 1.69 in Lagos, with a median of
272 2 in both States before visiting the recruitment facility (*Appendix 4*). Participants who visited the
273 network of private hospitals and clinics had the fewest average encounters (mean of 1.10)
274 compared to other providers (pharmacies or vendors = 2.35, public clinic = 3.00, traditional
275 healers = 3.00, private clinic=3.33). Our survey revealed that the majority (n=109, 61%) patients
276 sought care from multiple providers. Twenty-five percent of participants in Kano, and 41% in
277 Lagos sought care only in the recruitment facility.

278
279 Our pathway sequencing charts (*Fig 4a and 4b*) identified 31 and 16 different patterns in Kano
280 and Lagos, respectively, of progressive provider encounters. Participants in Kano, irrespective of
281 their diagnosis, had more encounters and more variation in health-seeking than in Lagos. The
282 largest share of participants in Kano used one additional provider (n=42, 46.6%) while for Lagos,
283 the majority (n=42, 46.6%) used the recruitment facility (RF) exclusively.

284
285 *Fig 4c* showed 53 different sequencing patterns for all 180 survey participants, and included
286 points of diagnosis, as well as the proportions who ended up with a negative diagnosis. The
287 majority of participants (n=165, 91.6%) were diagnosed (with or without TB) at the recruitment
288 facilities. All diagnosis points were clinical facilities (private or public). All TB positive
289 participants (n=90) were initiated on treatment in the private hospitals or private clinics that
290 were our recruitment facilities.

291
292 The qualitative data (*Fig 3, Appendix 5*) shows many participants used a private provider first,
293 because these providers were more accessible and convenient, and public hospitals were
294 congested. In terms of choice of provider, this was either because of proximity, prior
295 relationship with provider, cost considerations or due to referral or contact tracing from
296 someone the participant knew. Several of those with more than one encounter said that the
297 medicine store was their first port of call. Many participants visited multiple providers as their
298 symptoms worsened, particularly those with TB. For participants diagnosed, once they were
299 told they had TB, several said they were placed on treatment on the same or next day.
300 Although the pathways to diagnosis were cumbersome for many, they expressed satisfaction
301 with the care they received afterwards. The majority of themes regarding treatment were
302 positive experiences after diagnosis.

303 304 ***Impact of COVID-19***

305 At the time of our survey, 74 (41%) participants said it was easier to access healthcare, while 46
306 (26%) said it was still difficult. Most respondents (164 or 91%) experienced lockdowns or other
307 pandemic-related restrictions, which affected transportation to seek care for 41 (23%), closed
308 facilities for 27 (15%) and longer waiting times for 27 (15%) of them. However, at the time of the
309 survey, most respondents said they were more willing (118 or 66%) to seek healthcare, compared
310 to before the pandemic.

311
312 From the in-depth interviews, early on in the pandemic, participants were concerned about the
313 rising deaths due to COVID-19, which discouraged them from going to a clinic or hospital.
314 Participants didn't want to get infected, but more importantly, they didn't want to be forced to
315 take a diagnostic test for COVID-19, test positive, then have to quarantine, which was the
316 practice in many public hospitals at the time. A few participants said transport challenges
317 during the lockdown period hampered their access to care. Participants also mentioned
318 provider attitudes during the early phase of the pandemic as being fearful or unhelpful.

319 320 ***Determinants and factors influencing private sector use and number of encounters***

321 We looked at predictors for two outcome variables – 1) Choosing to use a private facility as their
322 first healthcare contact 2) Using more than one provider from symptom onset. We also present
323 the adjusted regression coefficient for the number of provider encounters.

324
325 When we looked at the predictors for participants choosing to use a private facility as their first
326 healthcare contact (*Fig 5a*), we found that participants in Lagos State were more likely (OR =
327 8.97, 95% CI: 2.90 – 27.65). Those who were self-employed (OR = 0.22, 95% CI: 0.06 – 0.76), and
328 those presenting with rashes and allergies (OR = 0.16, 95% CI: 0.03 – 0.79), were less likely to
329 use private providers first. No other variables, including age, gender, TB status or symptoms
330 were significant. The only statistically significant determinant of using more than one provider
331 (*Fig 5b*) was having difficulty in breathing as a symptom (OR = 4.69, 95% CI: 1.42 – 15.51).

332 333 **Discussion**

334 In our study of patient pathways within the private sector in two Nigerian states, we found that
335 individuals with chest symptoms experienced relatively short pathways. The study was
336 conducted in a unique context, differing from the typical urban areas in Nigeria. The sampled
337 providers belonged within the SHOPS Plus network, which provided extensive support to
338 private sector facilities, ensuring efficient referral systems, availability of laboratory equipment
339 and medications, and community engagement for case identification. Even within this context,
340 patients faced some health-seeking and provider delays.

341

342 ***Health-seeking and health system delays***

343 Our investigation showed several challenges associated with health-seeking and provider
344 delays. However, once individuals with TB were identified and given a definitive diagnosis, their
345 experience with the healthcare provider was much more positive and timelier than their
346 experience before diagnosis, agreeing with several studies in Nigeria and other high burden
347 settings [32, 38, 42]. Of the 90 TB positive participants, majority (n=66, 73%) and all of the
348 qualitative interview participants were treated within 2 days of diagnosis, contributing to their
349 feelings of relief or gratitude, because they finally felt, ‘seen’ by the healthcare system.

350

351 ***Individual pathways and private sector use***

352 Among the 180 participants and excluding the 71 who sought care first at the recruitment
353 facility, the majority (74 out of 109) initially sought care in private facilities. Some studies in
354 Nigeria and in similar high burden TB countries have found that patients seek care first in drug
355 stores or with traditional healers before clinics or hospitals [5, 7, 43-45], particularly if they
356 were ‘only’ coughing [44, 46].

357

358 In our sample of networked providers, pharmacies and medicine vendors had higher rates of
359 providing or referring patients for TB testing and treatment, while the private hospitals and
360 clinics provided appropriate care for every patient who visited them. This was due to the
361 support this network of providers received, and the fact that most of the drug stores in our
362 sample were located close to the private clinics and hospitals in the same network. Few studies
363 have looked at the differences in referrals between different types of private providers;
364 however, studies in Nigeria and in similar settings show that case notifications and referrals for
365 TB care from the private sector has been historically very low and in need of intervention [42-
366 44, 47-49]. The SHOPS Plus project, in collaboration with other stakeholders in Nigeria, have
367 implemented several strategies to strengthen linkages between the private sector and the
368 public TB delivery system [50].

369

370 Several studies found that individuals with chest symptoms are very likely to minimise symptoms
371 like cough or fever [38, 51-53]. Similar results have been reported in other high-burden TB
372 settings where symptoms like weight loss were associated with faster care-seeking, in
373 comparison to cough and fever which were perceived to be ‘normal’ [7, 51, 52, 54]. In some
374 settings, fever or headaches have been found to shorten delays [55-57].

375

376 In charting patient pathways, our results show that all the patients who chose a private hospital
377 (including recruitment facility) as their first or second provider did not use an additional

378 provider. This was likely influenced by the fact that our recruitment facilities, which were
379 supported sites, represented the first facility for 71 (40%) of all participants. We also found a
380 similar pattern among patients who used a private hospital as second provider - of not going to
381 another provider. These findings agree with studies from several high burden TB countries,
382 where hospitals, in public and private sector, missed diagnosing TB patients [49, 58-60]. A pre-
383 covid study in Nigeria found patients having up to 5 pre-NTP provider visits [61]

384
385 Qualitative themes related to misdiagnosis, lack of TB testing or referrals to other facilities were
386 also common. Congestion and waiting times in health facilities also discouraged participants
387 from seeking care, but that finding might have been a result of our purposive sampling in high-
388 volume facilities.

389
390 While Nigeria has shown remarkable increases in number of annual case notifications [1], there
391 are still approximately 208,000 missing cases estimated annually. Our findings are in
392 concordance with several studies on TB care cascade showing that access to diagnostic services,
393 or Gap 1, is the largest gap in the care cascade [32, 33, 42, 62]. Participants faced several
394 barriers in accessing diagnostic services, especially during the start of the COVID-19 pandemic,
395 and yet the responsibility for being diagnosed rests mostly on the patient, just like before the
396 pandemic [38]. Our findings agree with other studies showing TB positive participants face
397 longer diagnostic delays [32, 33, 38, 63, 64], often due to lack of access to a diagnostic test [32].

398 399 ***Determinants of private sector use and numbers of providers***

400 Our logistic regressions identified factors influencing private sector use and total number of
401 providers encountered within the context of our study. Our participants were all recruited
402 within a network of dedicated private providers in Kano and Lagos, making them distinct from
403 the general population in terms of their inclination and capacity to utilize private healthcare.
404 Participants in Lagos State were more likely to use the private sector first (93%) before going to
405 the public sector, compared to 67% in Kano. This might be because self-employed individuals
406 might be more flexible with the time required to seek, and the lower cost of public healthcare.
407 Two studies in India found young age, females, higher level of education and income group
408 associated with private sector use [65, 66]. Several studies in Nigeria and other countries have
409 suggested that patients are reluctant to use the public sector because of longer waiting times,
410 lower quality of care, or poor provider attitudes, while on the contrary, private facilities have a
411 reputation of better quality at a higher cost [38, 67, 68].

412
413 Patients who had difficulty in breathing as a symptom were more likely to use more than one
414 provider. Several studies have shown that patients with chest symptoms delay care-seeking for
415 a variety of reasons and also contact several private providers before diagnosis [69-72]. This is
416 likely because of the symptom minimization observed in several countries, where patients do
417 not immediately seek hospital care for cough until symptoms deteriorate, preferring to self-
418 medicate, or visit informal providers [38, 46, 72-74]. The use of more than one provider has also
419 been shown to be partly responsible for prolonged delays in TB diagnosis and treatment [5, 75-
420 77].

421

422 ***Impact of COVID-19***

423 Participants in our study reported that the impact of COVID-19 on care-seeking was mostly felt
424 during the lockdown periods, with a subsequent recovery to pre-pandemic levels. This finding
425 aligns with the quick recovery of TB case notification in Nigeria compared to other countries [1].
426 Disruptions to TB services have been widely documented in many high-burden settings [28, 78,
427 79]. Lockdown and the movement restrictions posed barriers to accessing care, leading to
428 delayed care seeking due to difficulties in finding affordable transportation. Other concerns
429 included the affordability of hospital care during the lockdown, fear of being diagnosed with
430 COVID-19 or overburdened public hospitals. Some participants perceived their symptoms to be
431 minor, further contributing to delayed care-seeking. Some participants narrated fearful
432 healthcare workers' attitudes towards them, particularly during the early days of the pandemic.

433
434 From the survey responses, most participants indicated that COVID did not affect their care-
435 seeking beyond the lockdown period. However, the qualitative data showed fear of COVID was
436 a predominant theme resulting in delayed care-seeking, albeit short-lived.

437 438 ***Limitations***

439 Our study has a few limitations. First, we were unable to calculate total provider delays across all
440 provider encounters as our time measure were categorical and not exact dates. We also did not
441 capture data on the total visits for each provider, as this would have provided a greater
442 understanding of the total number of times participants sought care for their symptoms. Our
443 analysis is limited by non-random purposive sampling for selecting facilities and patients and
444 selection bias. We cannot say whether a study including patients diagnosed in the public sector
445 or outside of the network of providers supported by the SHOPS Plus program will show similar
446 results. There was also no way to determine exactly if our sampled facilities were representative
447 of the distribution of all facilities in Kano and Lagos. Finally, as patients were asked to recall
448 events that had happened earlier, there might have been some recall bias in the responses. We
449 attempted to mitigate this effect by only selecting recently tested patients, with encounters with
450 the facilities dating back no further than January of 2021, or 5 months before our data collection.

451 452 ***Conclusion***

453 Our patient pathway study in two major cities in Nigeria showed relative shorter individual
454 pathways to care, given the unique context. It emphasizes the importance of involving lower
455 cadres in case identification and referral efforts, irrespective of the sector. Despite well-funded
456 initiatives, delays persist, albeit potentially more manageable. Our study suggests that COVID-
457 19 does not pose a lasting hurdle for the National TB control efforts among patients who are
458 willing and able to utilise private healthcare. More patient education on the importance of
459 getting tested with prolonged coughing, as well as improving referral systems and provider
460 training within the private and public healthcare sectors are needed in our study settings. The
461 WHO calls for multisectoral and intersectoral engagement in the fight against TB, and our
462 findings support evidence from other high-burden settings that private sector provider
463 engagement is critical.

Tables and Figures

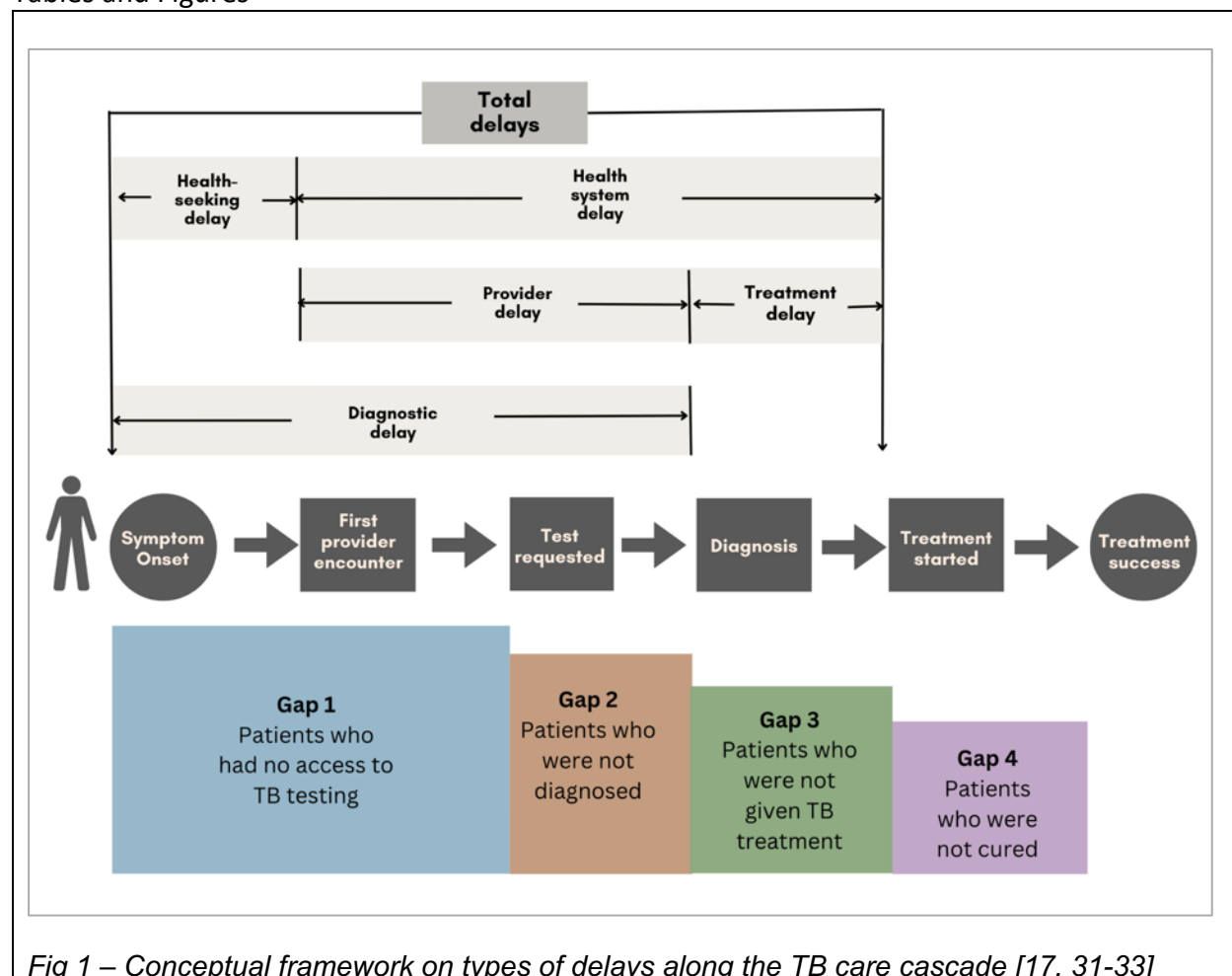


Fig 1 – Conceptual framework on types of delays along the TB care cascade [17, 31-33]

Table 1: Characteristics of surveyed participants by States [N = 180]

	KANO	LAGOS
Gender		
Male	60 (66.7%)	51 (56.7%)
Female	30 (33.3%)	39 (43.3%)
Age		
Mean (SD)	35.9 (13.8)	38.5 (12.9)
TB status		
TB negative	45 (50.0%)	46 (51.1%)
TB positive	45 (50.0%)	44 (48.9%)
Marital status		
Married	52 (57.8%)	44 (48.9%)
Single	33 (36.7%)	36 (40.0%)

Widowed	2 (2.2%)	6 (6.7%)
Separated	0 (0%)	4 (4.4%)
Divorced	3 (3.3%)	0 (0%)
Number of dependent relatives		
Mean (SD)	5.77 (4.49)	2.77 (2.02)
Median [Min, Max]	5.00 [0, 28.0]	3.00 [0, 11.0]
Highest education		
Senior secondary	29 (32.2%)	32 (35.6%)
Primary 6 or lower	9 (10.0%)	20 (22.2%)
Bachelor's or higher	7 (7.8%)	15 (16.7%)
OND/HND*	12 (13.3%)	5 (5.6%)
Junior secondary	3 (3.3%)	8 (8.9%)
Trade or vocational	2 (2.2%)	4 (4.4%)
Missing	28 (31.1%)	6 (6.7%)
Current employment		
Self-employed	45 (50.0%)	33 (36.7%)
Employee	19 (21.1%)	41 (45.6%)
Not working	26 (28.9%)	16 (17.8%)
Nearest public facility		
Less than 2 km	55 (61.1%)	31 (34.4%)
Between 2-10 km	32 (35.6%)	27 (30.0%)
Don't know/not sure	1 (1.1%)	19 (21.1%)
Over 10km	2 (2.2%)	13 (14.4%)

*OND/HND Ordinary National Diploma/Higher National Diploma (representing 2-3 years post-secondary education)

Table 2 – Delays, care pathway, missed opportunities and the impact of COVID-19

	Unweighted		Weighted		p-value
	KANO	LAGOS	KANO	LAGOS	
Delay between symptom onset and first provider encounter					
1 or 2 days	12 (13.3%)	20 (22.2%)	12.8 (13.5)	18.9 (22.6)	0.102
3 to 7 days	37 (41.1%)	27 (30.0%)	39.5 (41.6)	25.4 (30.3)	
1 to 4 weeks	21 (23.3%)	17 (18.9%)	22.0 (23.2)	15.8 (18.9)	
1 to 2 months	10 (11.1%)	16 (17.8%)	10.2 (10.8)	14.7 (17.57)	
2 to 3 months	5 (5.6%)	1 (1.1%)	5.2 (5.5)	0.9 (1.12)	
Over 3 months	5 (5.6%)	9 (10.0%)	5.2 (5.5)	8.0 (9.58)	
Sought care at more than one facility					
Yes	61 (67.8%)	48 (53.3%)	63.8 (67.3%)	44.0 (52.6%)	0.048
No	29 (32.2%)	42 (46.7%)	31.1 (32.7%)	39.7 (47.4%)	
Number of encounters +					
Mean (SD)	2 (0.936)	1.69 (0.76)	2.0 (0.9)	1.7 (0.75)	0.015
Median [Min, Max]	2 [1, 5]	2 [1, 4]	2 [1, 5]	2 [1, 4]	
Number of providers encountered +					
Only at recruitment facility	29 (25%)	42 (41%)	31.1 (32.7%)	39.7 (47.4%)	0.183
Two provider encounters	58 (50%)	46 (45%)	63.8 (67.3%)	44.0 (52.6%)	
Three provider encounters	21 (18%)	12 (12%)	21.7 (22.9%)	10.8 (12.9%)	
Four provider encounters	6 (5%)	2 (2%)	6.1 (6.4%)	1.8 (2.1%)	
Five provider encounters	2 (2%)	0 (0%)	2.0 (2.1%)	0	
First provider contacted after symptoms					
Private provider	60 (66.7%)	83 (92.3%)	63.3 (66.7%)	77.5 (92.5%)	0.001
Public provider	27 (30.0%)	5 (5.5%)	28.2 (29.4%)	4.5 (5.4%)	

Informal provider	22 (33.3%)	2 (42.2%)	3.3 (3.5%)	0.9 (1.1%)	
Testing with first provider contacted					
Provider did not discuss COVID	55 (61.1%)	40 (44.4%)	57.3 (60.4%)	36.8 (44.0%)	0.208
Provider did not discuss TB*	39 (43.3%)	32 (35.6%)	40.4 (42.6%)	29.4 (35.1%)	0.154
Provider said lab test was needed*	36 (40.0%)	22 (24.4%)	37.7 (39.7%)	20.1 (23.9%)	0.055
Provider recommended sputum test*	25 (27.8%)	14 (15.6%)	26.7 (28.1%)	12.8 (15.3%)	0.067
Time from TB diagnosis to treatment start					
Same day or within 2 days	34 (37.8%)	32 (35.6%)	34.1 (60.4%)	28.8 (32.0%)	0.075
3-7 days	3 (3.3%)	10 (11.1%)	3.2 (3.5%)	9.1 (10.1%)	
8- 30 days	4 (4.4%)	2 (2.2%)	4.1 (4.6%)	1.9 (2.1%)	
1- 2 months	2 (2.2%)	0 (0%)	1.9 (2.1%)	0 (0%)	
Over 2 months	2 (2.2%)	0 (0%)	2.2 (2.4%)	0 (0%)	
Negative for TB	45 (50.0%)	46 (51.1%)	49.4 (54.9%)	43.9 (48.8%)	
Impact of COVID-19 the health facility most frequented (multichoice)					
New infection control measures	46 (51.1%)	54 (60.0%)	48.7 (51.3%)	50.6 (60.4%)	0.222
Reduced hours	16 (17.8%)	3 (3.3%)	16.9 (17.8%)	2.69 (3.2%)	0.001
Screening for COVID-19	8 (8.9%)	4 (4.4%)	8.5 (8.9%)	3.63 (4.3%)	0.213
Closed	3 (3.3%)	2 (2.2%)	3.2 (3.4%)	1.81 (2.2%)	0.617
Since the pandemic in March 2020, has there been any time when you needed health care but did not receive it?					
No/ Cannot remember	84 (93.3%)	88 (97.8%)	88.4 (93.1%)	81.87 (97.8%)	0.130
Yes	6 (6.7%)	2 (2.2%)	6.5 (6.9%)	1.81 (2.2%)	
How COVID-related restrictions affected access to healthcare since March 2020 (multichoice)					
There has been no change for me.	57 (63.3%)	57 (63.3%)	59.8 (63.0%)	52.79 (63.1%)	0.996
Unable to leave the house to seek care because of movement/transport restrictions	20 (22.2%)	21 (23.3%)	21.1 (22.2%)	19.97 (23.9%)	0.792
Unable to reach a doctor because facilities were closed	15 (16.7%)	12 (13.3%)	15.7 (16.5%)	11.28 (13.5%)	0.574
Waiting times at facilities were longer than normal/expected	15 (16.7%)	12 (13.3%)	16.3 (17.1%)	11.35 (13.6%)	0.513
Unable to receive my medications because drug stores were closed	9 (10.0%)	6 (6.7%)	9.6 (10.1%)	5.72 (6.8%)	0.439
Sought care from a different facility than typical/preferred facility	8 (8.9%)	3 (3.3%)	8.5 (8.9%)	2.85 (3.4%)	0.130
How has COVID and/or current/past COVID-related restrictions affected <u>your willingness</u> to seek healthcare?					
I am more willing to seek care	52 (57.8%)	66 (73.3%)	55.0 (57.9%)	61.02 (72.9%)	0.001
No effect	38 (42.2%)	18 (20%)	39.9 (42.0%)	17.13 (20.5%)	
Don't know/Not sure	2 (2.2%)	1 (1.1%)			
I am less willing to seek care	0 (0%)	6 (6.7%)	0	5.54 (6.6%)	

* These rates are calculated across as they form part of Yes or No questions in the survey tool. Participants who answered 'Yes' to the question are shown in the table, as a fraction of total respondents to that question.

+ The number of encounters used in the tables and regression were self-reported by the participants

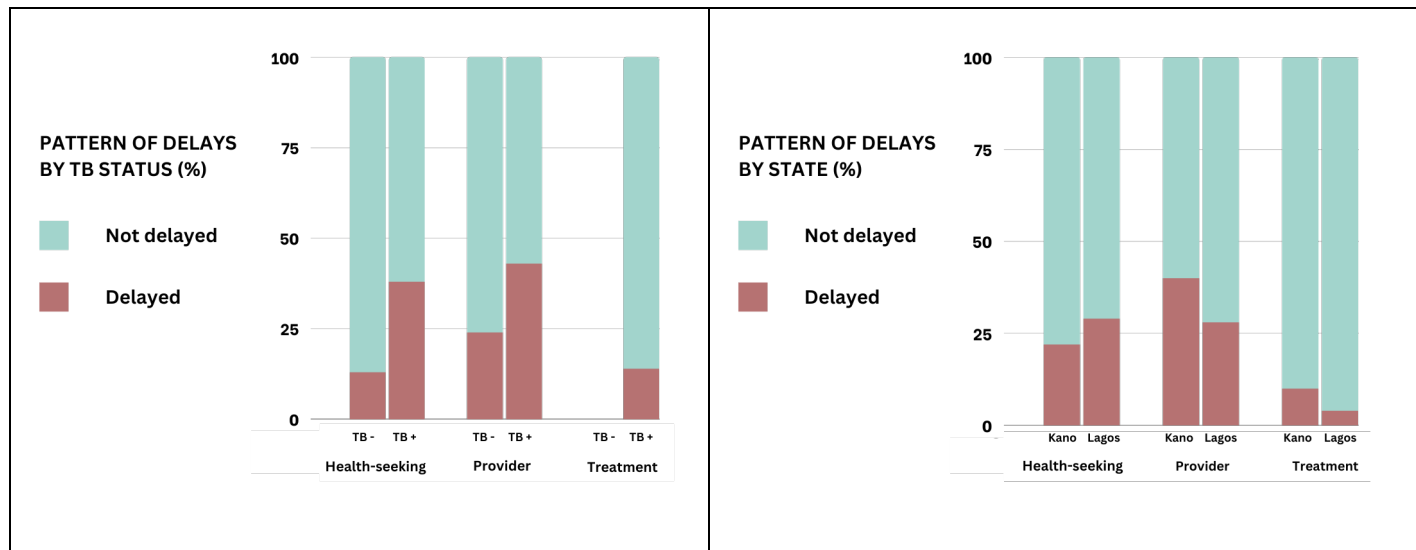


Figure 2 - The proportion of participants experiencing different types of delays (a) by TB status and (b) by State

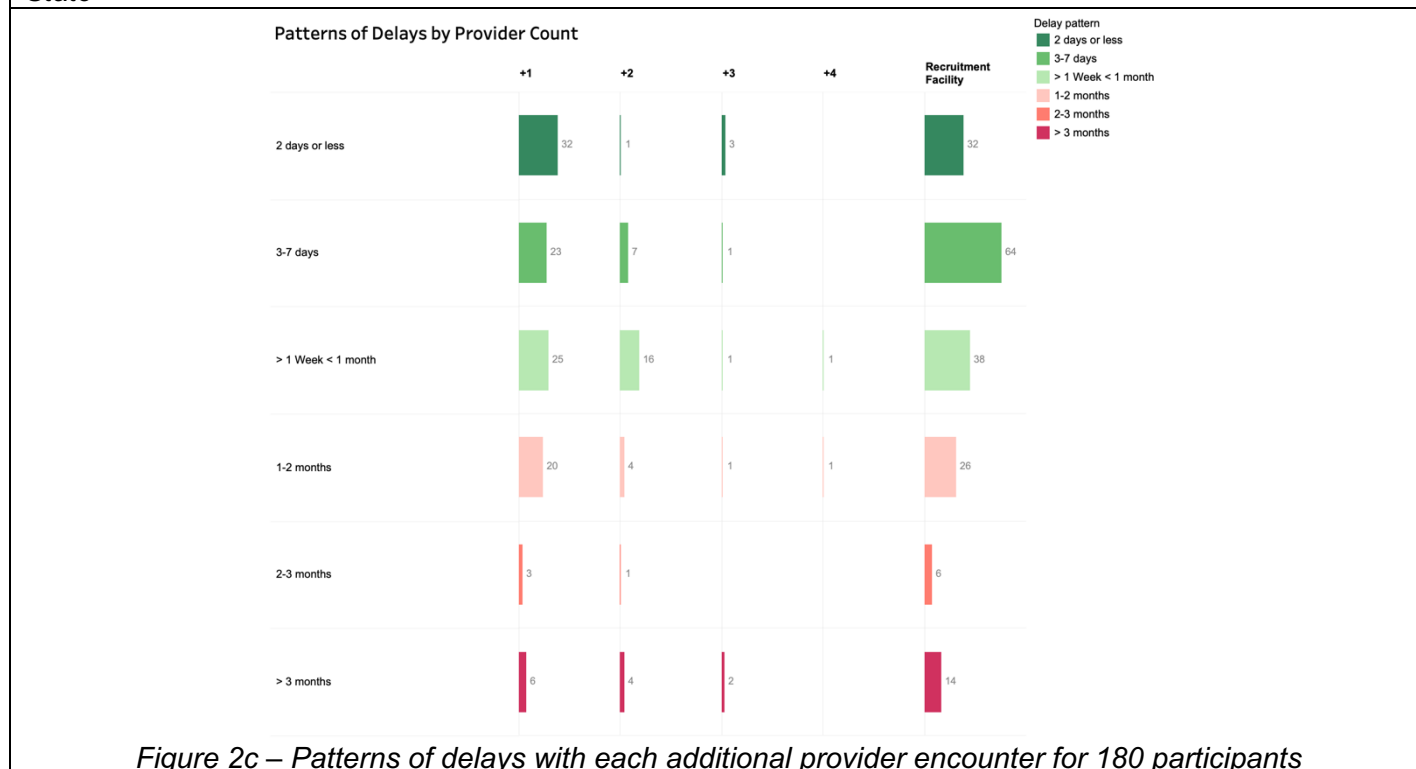


Figure 2c – Patterns of delays with each additional provider encounter for 180 participants

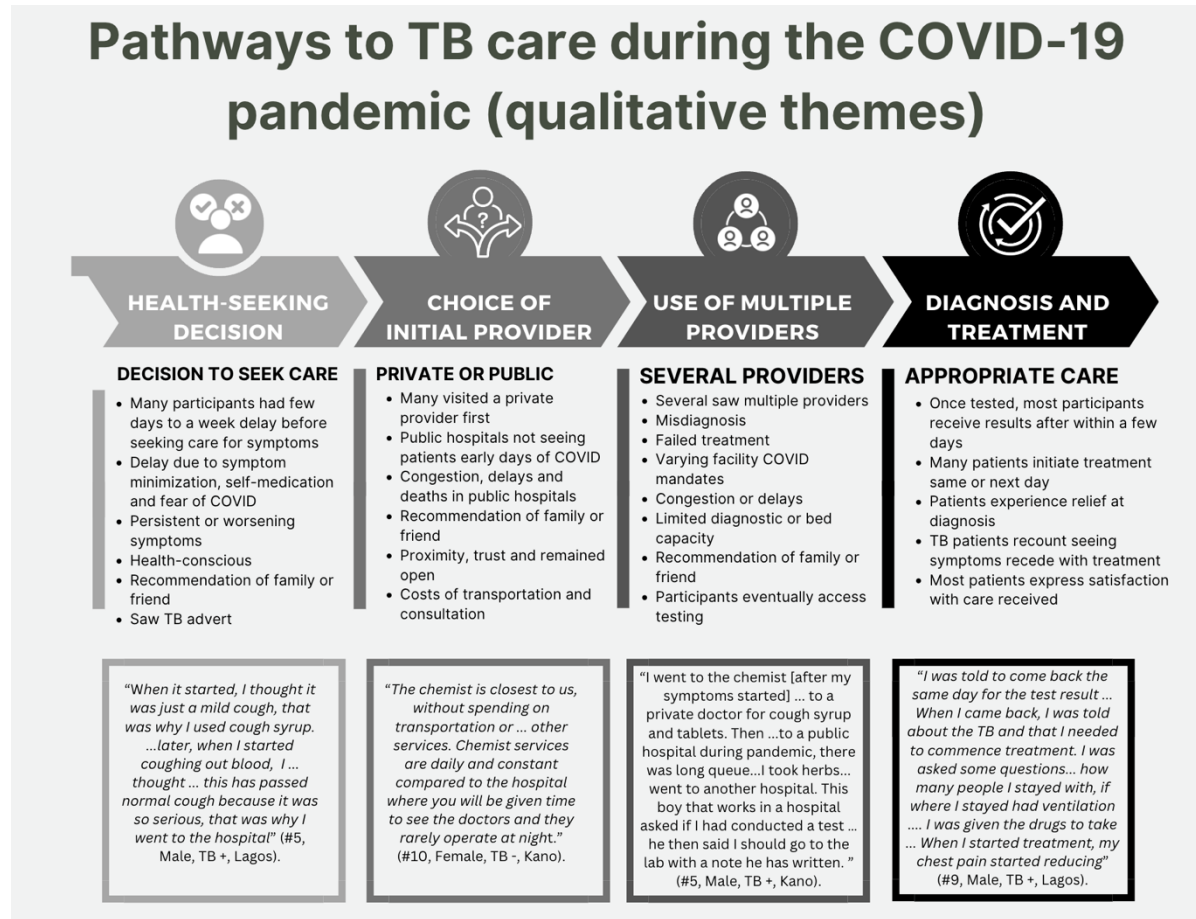


Figure 3 – Qualitative themes on pathways to TB care

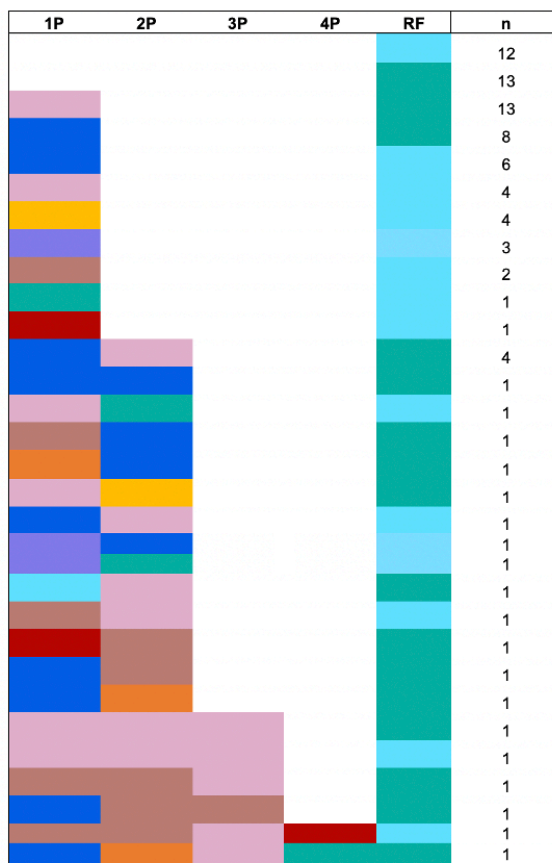


Fig 4a: Pathway sequencing for 90 individuals in Kano State

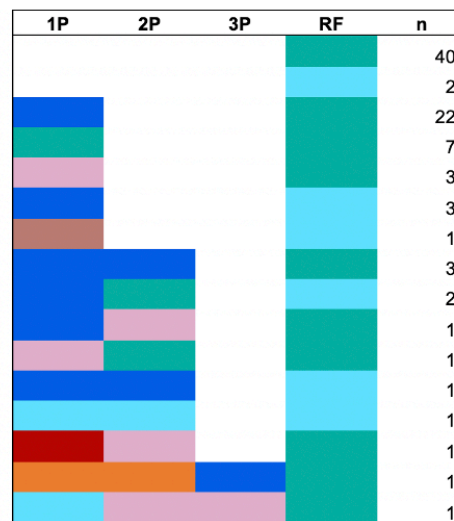
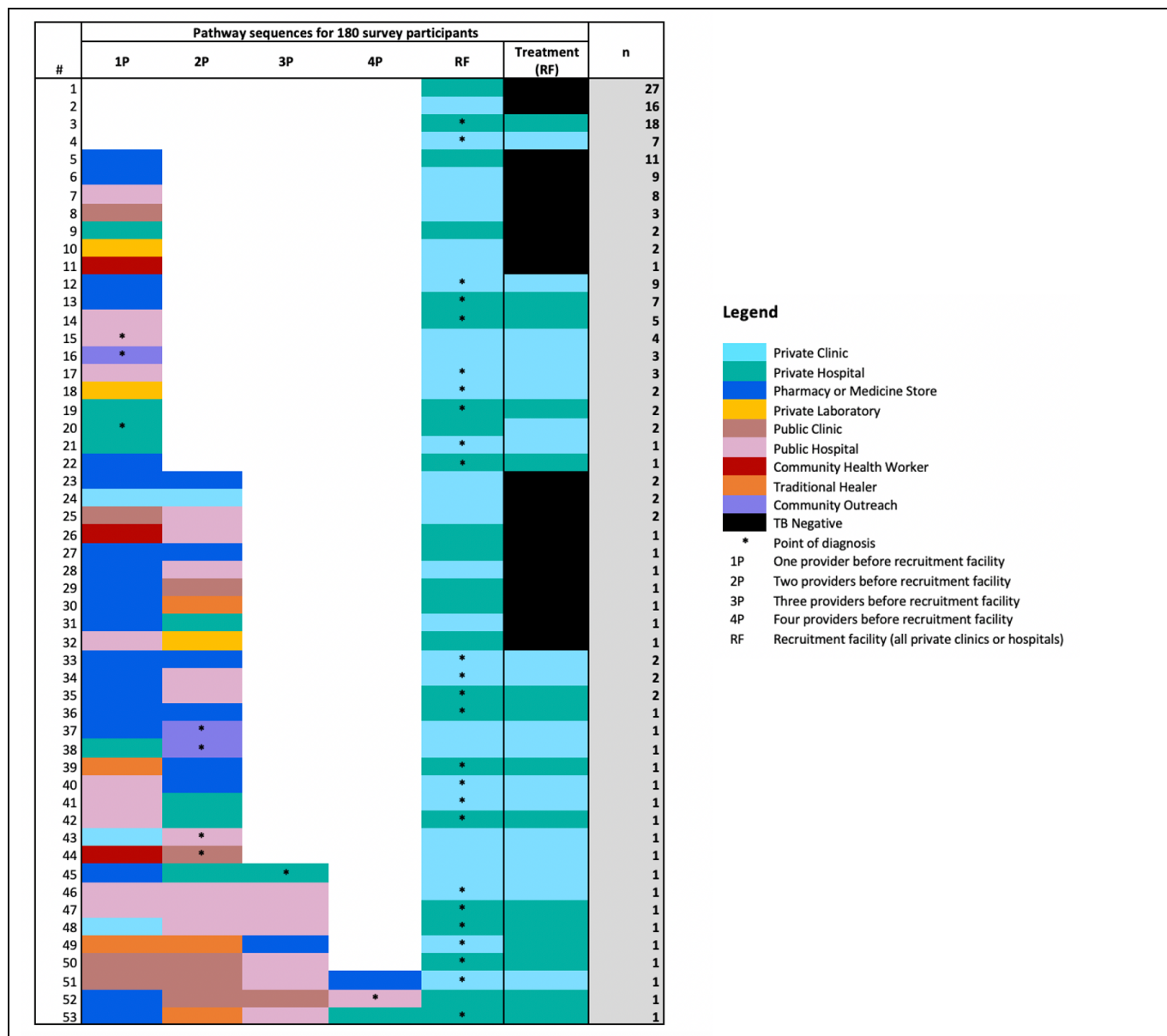


Fig 4b: Pathway sequencing for 90 individuals in Lagos State

Legend

- Private Clinic
- Private Hospital
- Pharmacy or Medicine Store
- Private Laboratory
- Public Clinic
- Public Hospital
- Community Health Worker
- Traditional Healer
- Community Outreach
- TB Negative
- 1P One provider before recruitment facility
- 2P Two providers before recruitment facility
- 3P Three providers before recruitment facility
- 4P Four providers before recruitment facility
- RF Recruitment facility (all private clinics or hospitals)

Fig 4a and 4b: Pathway sequences for all survey participants and those in each state



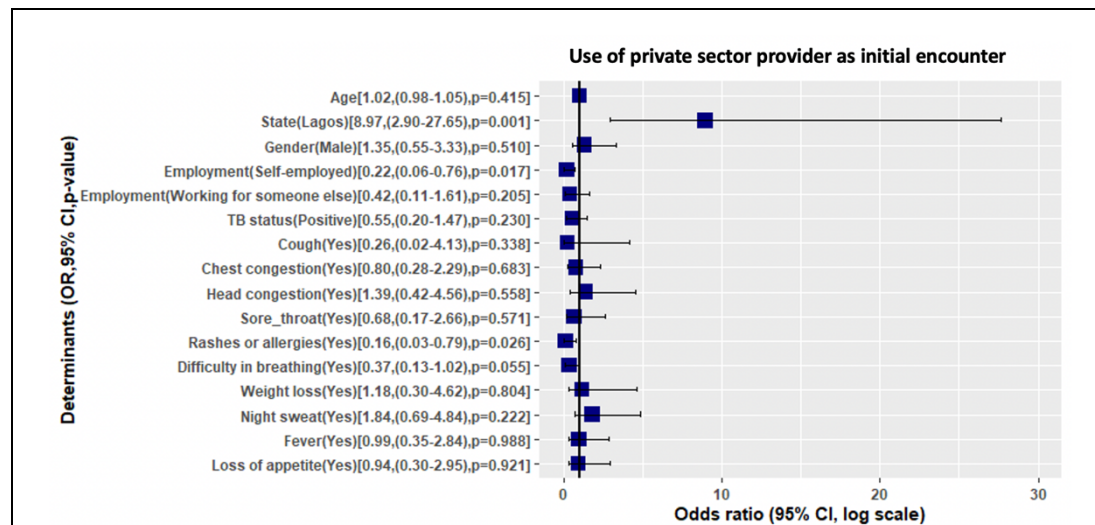


Figure 5a. Determinants of using the private sector as first provider contact

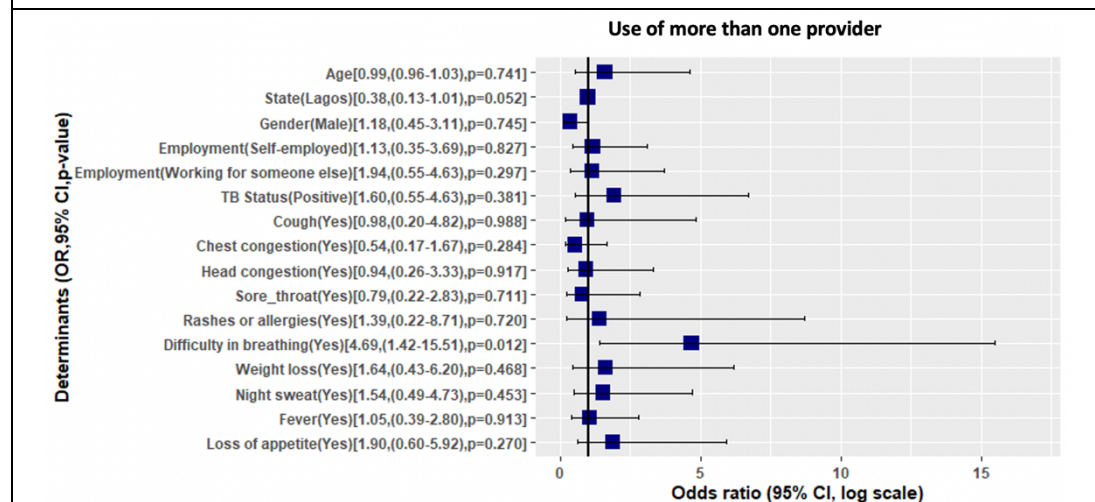


Figure 5b: Determinants of using more than one provider after symptoms

Appendix

Appendix 1: Concurrent mixed methods and participant recruitment flow chart

Facility selection	Sampling of recruitment facilities (n=18)	
	<ol style="list-style-type: none"> 1. Divided Lagos and Kano into 3 each by senatorial zones (n=6) 2. Selected 3 highest volume facilities based on notifications in the last 3 months from each senatorial zone, ensuring different local government locations (n =18) 	
Participant recruitment	Participant recruitment (337)	
	<ol style="list-style-type: none"> 1. TB client registers were reviewed starting from the most recent listings (within 6 months) 2. Clients over 18 years old and HIV negative with confirmed TB negative (presumptive) and TB positive (confirmed) sputum test results were included 3. Out of 337 patients contacted, 212 (63%) consented for the quantitative surveys, and 46 (14%) consented for qualitative interviews, and 77 (23%) were unreachable. Response rate = 77%. 4. Surveys were scheduled and conducted until quota (180 surveys) was reached. 	
Data collection 10 th - 28 th May 2021	Quantitative survey (n=180)	Qualitative interviews (n=20)
	<ol style="list-style-type: none"> 1. In each state - 90 surveys (45 presumptive and 45 confirmed TB) 2. Questions on delays and pathways to TB testing and treatment and impact of COVID 	<ol style="list-style-type: none"> 1. In each state - 10 in-depth interviews 2. Questions explored facilitators and barriers to TB care initiation and impact of COVID
Data analysis	Descriptive statistics and logistic regression	Thematic coding
Results	Integration of mixed methods results	
	<ol style="list-style-type: none"> 1. Statistically significant results were compared with qualitative themes 2. Mixed methods results were compared for complementarity and discordance 	

Appendix 2: Quota sample distribution by site

State	Senatorial Zone	Facility Name	LGA	# of network facilities	Facility Type	Facility registers Jan – May 2021		Surveyed Jun 2021	
						TB negative	TB positive	TB negative	TB positive
Kano	Kano Central	Zakirai Nursing Home & Maternity	Dala	61	Hospital	187	56	5	5
	Kano Central	Kura Surgery and Maternity Clinic	Kura	14	Hospital	168	52	5	5
	Kano Central	International Hospital	Fagge	122	Hospital	447	50	5	5
	Kano Central	Al-Nouri Hospital	Tarauni	115	Hospital	515	31	5	5
	Kano North	Yakubu Dannonno Memorial Hospital	Tofa	11	Hospital	318	39	5	5
	Kano North	Dawanau Clinic & Maternity	Dawakin Tofa	7	Hospital	152	3	5	5*
	Kano South	Al-Hilal Nursing & Maternity Home	Wudil	48	Nursing Home	244	69	5	5
	Kano South	AHIP FHC Clinic	Garko	29	Hospital	566	81	5	5

	Kano South	H. Nasiha Clinic and Maternity Centre	Gaya	45	Hospital	449	103	5	5
Lagos	Lagos Central	St. Lukes Hospital	Lagos Mainland	37	Hospital	75	14	5	5
	Lagos Central	Fenhitola Royal Consult	Lagos Island	63	Hospital	156	14	5	5
	Lagos Central	St. Kizito Clinic Lekki	Eti-Osa	30	Hospital	591	84	5	5
	Lagos East	Eloka Nursing Home	Ikorodu	72	Nursing Home	100	24	5	5
	Lagos East	Al Sadiq Hospital	Kosofe	46	Hospital	71	18	5	5
	Lagos East	R-Jolad Hospital	Shomolu	27	Hospital	179	12	5	5
	Lagos West	St. Theresa Hospital	Ajeromi-Ifelodun	113	Hospital	517	89	5	5
	Lagos West	Medservice Hospital	Alimosho	335	Hospital	58	23	5	5
	Lagos West	St Catherine Med.	Oshodi-Isolo	70	Hospital	115	19	5	5
* Sampled patients included 2 patients who were diagnosed within recruitment period earlier to complete quota									

Appendix 3: Characteristics of respondents and non-respondents

		Patient that consented N=180	Patient that declined N=80	Overall N=260
State	Kano	90 (50.0%)	50 (62.5%)	140 (53.8%)
	Lagos	90 (50.0%)	30 (37.5%)	120 (46.2%)
Gender	Female	70 (38.9%)	30 (37.5%)	100 (38.5%)
	Male	110 (61.1%)	50 (62.5%)	160 (61.5%)
Age Group	18-24	24 (13.3%)	12 (15.0%)	36 (13.8%)
	25-34	63 (35.0%)	24 (30.0%)	87 (33.5%)
	35-44	50 (27.8%)	22 (27.5%)	72 (27.7%)
	45-54	21 (11.7%)	7 (8.8%)	28 (10.8%)
	55+	22 (12.2%)	15 (18.8%)	37 (14.2%)
TB Status	TB negative	90 (50.0%)	43 (53.8%)	133 (51.2%)
	TB positive	90 (50.0%)	33 (41.2%)	123 (47.3%)
	Missing	0 (0%)	4 (5.0%)	4 (1.5%)

Appendix 4 – Average number of encounters by type of provider seen first

Initial Provider contact	Total number of individuals	Mean Number of Encounters (SD)	Median (Min, Max)
Private hospital or nursing home	79	1.10 (0.304)	1.00 [1.00, 2.00]
Community Pharmacy or Medicine Vendor	57	2.35 (0.612)	2.00 [2.00, 5.00]
Public Hospital	26	2.31 (0.618)	2.00 [2.00, 4.00]

Public outpatient clinic	6	3.00 (1.265)	2.50 [2.00, 5.00]
Private laboratory	4	2.00 (0.00)	2.00 [2.00, 2.00]
Community Health Worker/CHEW	3	2.67 (0.577)	3.00 [2.00, 3.00]
Private outpatient clinic, health centre, or dispensary	3	3.33 (0.577)	3.00 [3.00, 4.00]
Traditional healers	1	3.00 (NA)	3.00 [3.00, 3.00]
Other, specify	1	4.00 (NA)	4.00 [4.00, 4.00]
TOTAL	180	1.84 (0.864)	2.00 [1.00, 5.00]

Appendix 5 - Selected qualitative themes and example quotes

Theme #	Theme Description	Codes	Sample Quote
1	Delays	Self-medication	<i>"Yes, it was up to a year, it was a gradual thing. I treated typhoid and malaria because that has always been the major sickness I usually have and when I treat, it subsides, and I'll think I'm okay until it crawls back again,"</i> (#6, Female, TB +, Lagos).
		Self-medication/ Symptom minimization	<i>"I just thought it's the normal cough caused by [cold] and which makes me to be taking different cough syrups to be better, but it didn't work"</i> (#10, Female, TB -, Kano).
		Symptom minimization	<i>"...for instance, you can't just get up and visit the doctor in a haste because of headache. It is just like one going to the farm and feeling the hot sun but knowing that in a matter of time you will feel relief from the effect of the sun. And that was why I spent some few days before visiting the chemist."</i> (#5, Male, TB +, Kano).
		Symptom minimization /Misdiagnosis	<i>"I was coughing blood. I didn't take it seriously ... when I came home, my dad asked me to take herbs ... it persisted, so my mum took me to the chemist who gave me drugs to take for 10 days. I felt if I completed the 10 days it would stop. After completing it, it didn't stop,"</i> (Male, TB Positive, Lagos). (#9, Male, TB +, Lagos).
		Misdiagnosis	<i>"...Then we didn't know what the sickness was, we didn't know what type of cough it was. I went to chemist, I was tested and given some drugs for catarrh and I felt relieve after taking it but whenever the medicine is finished the cough will be back"</i> (Female, TB Positive, Kano). (#7, Female, TB +, Kano).

		Same day treatment	<i>"I was diagnosed at that time ... in the hospital when we came back ...it was all done here, after the test and checking, drugs was given to us on the same day. ..."</i> (Female, TB Positive, Kano). (#4, Female, TB +, Kano).
		Same day treatment	<i>"I was told to come back the same day for the test result ... When I came back, I was told about the TB and that I needed to commence treatment. I was asked some questions... how many people I stayed with, if where I stayed had ventilation I was given the drugs to take ... When I started treatment, my chest pain started reducing"</i> (#9, Male, TB +, Lagos). (#9, Male, TB +, Lagos).
2	Pathways	Symptoms progressing/ misdiagnosis	<i>"when it started, I thought, it was just a mild cough, that was why I used cough syrup. It was later, when I started coughing out blood, that I now thought that this has passed normal cough because it was so serious, that was why I went to the hospital, they now referred me [from one public hospital to another] and from there, we know came here [private hospital]"</i> (Male, TB positive, Lagos). (#5, Male, TB +, Lagos).
		Symptoms progressing	<i>"...it was excessive coughing that had been disturbing me; and I use to go and collect drugs ... but that didn't change anything, so I took drugs for a long time"</i> (Male, TB positive, Kano). (#2, Male, TB +, Kano).
3	Choice of initial provider	Proximity and convenience	<i>"The chemist is closest to us, without spending on transportation or ... other services. Chemist services are daily and constant compared to the hospital where you will be given time to see the doctors and they rarely operate at night."</i> (#10, Female, TB -, Kano). (#10, Female, TB -, Kano).
		Recommendations of family/friend	<i>"The whole process took long because there was no sign of cough just that it was eating me ... So, ... when I travelled home, a matron from my family ... asked me if I'd gone for test. I told her I had gone for series of tests and she told me to go for TB test which made me laugh and I told her ...I clearly wasn't coughing. ... she told me it doesn't matter because TB has a way of manifesting by eating one up internally When I got back to Lagos, someone else told me the same thing which made me go for test at the Lab... Not until when I came here and the doctor prescribed 3 tests which I did and that was when I started coughing which was increasing gradually ... up to a week and at a point I started coughing out blood".</i> (#6, Female, TB +, Lagos).

4	Use of multiple providers	Misdiagnosis, recommendation of friend	<p><i>"I went to the chemist [after my symptoms started] ... to a private doctor for cough syrup and tablets. Then ...to a public hospital during pandemic, there was long queue...I took herbs... went to another hospital. This boy that works in a hospital asked if I had conducted a test ... he then said I should go to the lab with a note he has written. "</i> (#5, Male, TB +, Kano). (#5, Male, TB +, Kano).</p>
		Misdiagnosis, recommendation of friend	<p><i>"It has been the long I had the symptoms. My mum, we were thinking that it was malaria or fever, so I've been using malaria drugs since February, because our family nurse told us that it was malaria, so she was just giving me injections, and drugs and I did not like it. We went to the hospital by March and they told me that it was fever, so I was also given injections, and drugs ... I told them that I was coughing and having chest pain, but the drugs they gave me... were just for malaria. I was complaining to the doctor ...that I was coughing. I did blood tests too but the drugs they were giving me, it was actually not relieving, so I told my doctor in our church... It was him that referred me to ... to go for a x-ray...because my mum once had TB, maybe it could be TB, he guessed... I went for x-ray...and it was TB and the sputum test came out too, it was TB".</i> (#1, Female, TB +, Lagos).</p>
5	Impact of COVID	Fear of diagnosis	<p><i>I will be thinking that if I have this malaria, it's better I go to the chemist to buy the anti-malaria drug than going to the hospital where I will be told that I have COVID-19 just because I have malaria symptoms.</i> (Female TB positive, Lagos) (#1, Female, TB +, Lagos).</p>
		Provider attitude, overburdened facilities, and infection control mandates	<p><i>"Actually, there are a lot of differences you will notice. During the COVID-19 period, the doctors around will be harassing people without considering their condition. ... And those COVID-19 protocols are some of the serious challenges we faced. At that time, they will tell you to use face mask, use hand sanitizer and social distancing... And there was congestion, too much death rate. Actually COVID-19 has affected my access to health care services a lot".</i> (#10, Female, TB -, Kano).</p>
		Movement restrictions, infection control mandates, provider attitude	<p><i>"As villagers, we don't know much about COVID-19. It ... affected me during lockdown that I couldn't get access to the hospital. My major challenge was during the lockdown. I don't like that covid-19 protocols, wearing of face masks does not allow me to breath well, that social distancing. And above all even the healthcare providers are afraid to attend to us because COVID-19 and TB are communicable diseases and have similar symptoms".</i></p>

			(#9, Male, TB +, Kano).
--	--	--	-------------------------

References

1. World Health Organization, *Global tuberculosis report 2022*. 2022.
2. Kirby, T., *Global tuberculosis progress reversed by COVID-19 pandemic*. The Lancet Respiratory Medicine, 2021.
3. Wingfield, T., et al., *Tackling two pandemics: a plea on World Tuberculosis Day*. The Lancet Respiratory Medicine, 2020. **8**(6): p. 536-538.
4. Organization, W.H., *Gear up to end TB: introducing the end TB strategy*. 2015, World Health Organization.
5. Odusanya, O.O. and J.O. Babafemi, *Patterns of delays amongst pulmonary tuberculosis patients in Lagos, Nigeria*. BMC public health, 2004. **4**(1): p. 1-5.
6. Oga-Omenka, C., et al., *Rates and timeliness of treatment initiation among drug-resistant tuberculosis patients in Nigeria-A retrospective cohort study*. PloS one, 2019. **14**(4): p. e0215542.
7. Ukwaja, K.N., et al., *Healthcare-seeking behavior, treatment delays and its determinants among pulmonary tuberculosis patients in rural Nigeria: a cross-sectional study*. BMC health services research, 2013. **13**(1): p. 1-9.
8. Getnet, F., et al., *Delay in diagnosis of pulmonary tuberculosis in low-and middle-income settings: systematic review and meta-analysis*. BMC pulmonary medicine, 2017. **17**(1): p. 1-15.
9. Bajehson, M., et al., *Determinants of mortality among patients with drug-resistant tuberculosis in northern Nigeria*. PloS one, 2019. **14**(11): p. e0225165.
10. Lin, X., et al., *Dose-response relationship between treatment delay of smear-positive tuberculosis patients and intra-household transmission: a cross-sectional study*. Transactions of the Royal Society of Tropical Medicine and Hygiene, 2008. **102**(8): p. 797-804.
11. Tedla, K., et al., *Delay in treatment initiation and its association with clinical severity and infectiousness among new adult pulmonary tuberculosis patients in Tigray, northern Ethiopia*. BMC Infectious Diseases, 2020. **20**(1): p. 1-10.
12. Virenfeltdt, J., et al., *Treatment delay affects clinical severity of tuberculosis: a longitudinal cohort study*. BMJ open, 2014. **4**(6): p. e004818.
13. Hanson, C., et al., *Finding the missing patients with tuberculosis: lessons learned from patient-pathway analyses in 5 countries*. The Journal of infectious diseases, 2017. **216**(suppl_7): p. S686-S695.
14. Ku, C.-C., et al., *Patient pathways of tuberculosis care-seeking and treatment: an individual-level analysis of National Health Insurance data in Taiwan*. BMJ global health, 2020. **5**(6): p. e002187.
15. World Health Organization, *The End TB Strategy*. 2015.
16. Mistry, N., et al., *Pulmonary tuberculosis in Patna, India: Durations, delays, and health care seeking behaviour among patients identified through household surveys*. Journal of epidemiology and global health, 2017. **7**(4): p. 241-248.

17. Lestari, B.W., et al., *Patient pathways and delays to diagnosis and treatment of tuberculosis in an urban setting in Indonesia*. The Lancet Regional Health-Western Pacific, 2020. **5**: p. 100059.
18. Yellappa, V., et al., *Patients pathways to tuberculosis diagnosis and treatment in a fragmented health system: a qualitative study from a south Indian district*. BMC public health, 2017. **17**(1): p. 1-10.
19. World Health Organization, *Engaging private health care providers in TB care and prevention: a landscape analysis 2020 Update*. 2020, World Health Organization.
20. Nigeria Centre for Disease Control, *COVID-19 Situation Report Weekly Epidemiological Report 64*, M.o. Health, Editor. 2022.
21. Adewole, O., *Impact of COVID-19 on TB care: experiences of a treatment centre in Nigeria*. Int J Tuberc Lung Dis, 2020. **24**(9): p. 981-982.
22. McQuaid, C.F., et al., *The impact of COVID-19 on TB: a review of the data*. The International Journal of Tuberculosis and Lung Disease, 2021. **25**(6): p. 436-446.
23. Odume, B., et al., *Impact of COVID-19 on TB active case finding in Nigeria*. Public Health Action, 2020. **10**(4): p. 157.
24. Oga-Omenka, C., et al., *Tuberculosis service disruptions and adaptations during the first year of the COVID-19 pandemic in the private health sector of two urban settings in Nigeria—A mixed methods study*. PLOS Global Public Health, 2023. **3**(3): p. e0001618.
25. Oga-Omenka, C., et al. *Commentary: Lessons from the COVID-19 global health response to inform TB case finding*. in *Healthcare*. 2021. Elsevier.
26. Visca, D., et al., *Tuberculosis and COVID-19 interaction: a review of biological, clinical and public health effects*. Pulmonology, 2021.
27. Udawadia, Z.F., et al., *COVID-19-Tuberculosis interactions: when dark forces collide*. Indian Journal of Tuberculosis, 2020.
28. Zimmer, A.J., et al., *Tuberculosis in times of COVID-19*. J Epidemiol Community Health, 2021.
29. Chijioko-Akaniro, O., et al., *Strategic Engagement of Private Facilities to Increase Public-Private Mix (PPM) Contribution to Nigeria Tuberculosis Case Notification*. Journal of Tuberculosis Research, 2022. **10**(3): p. 99-110.
30. SHOPS Plus, *SHOPS Plus Tuberculosis Program in Nigeria*. 2021: Abuja, Nigeria.
31. Bello, S., et al., *Empirical evidence of delays in diagnosis and treatment of pulmonary tuberculosis: systematic review and meta-regression analysis*. BMC public health, 2019. **19**(1): p. 1-11.
32. Oga-Omenka, C., et al., *Understanding the gaps in DR-TB care Cascade in Nigeria: a sequential mixed-method study*. Journal of Clinical Tuberculosis and Other Mycobacterial Diseases, 2020. **21**: p. 100193.
33. Subbaraman, R., T. Jhaveri, and R.R. Nathavitharana, *Closing gaps in the tuberculosis care cascade: an action-oriented research agenda*. Journal of clinical tuberculosis and other mycobacterial diseases, 2020. **19**: p. 100144.
34. Sreeramareddy, C.T., et al., *Time delays in diagnosis of pulmonary tuberculosis: a systematic review of literature*. BMC Infectious Diseases, 2009. **9**(1): p. 91.

35. World Health Organization, *WHO Guidelines Approved by the Guidelines Review Committee*, in *WHO Treatment Guidelines for Drug-Resistant Tuberculosis, 2016 Update*. 2016, World Health Organization 2016.: Geneva.
36. Babatunde, O.I., et al., *Determinants of treatment delays among pulmonary tuberculosis patients in Enugu Metropolis, South-East, Nigeria*. *Health*, 2015. **7**(11): p. 1506.
37. Kim, J., S. Keshavjee, and R. Atun, *Health systems performance in managing tuberculosis: analysis of tuberculosis care cascades among high-burden and non-high-burden countries*. *Journal of Global Health*, 2019. **9**(1).
38. Oga-Omenka, C., et al., *Factors influencing diagnosis and treatment initiation for multidrug-resistant/rifampicin-resistant tuberculosis in six sub-Saharan African countries: a mixed-methods systematic review*. *BMJ global health*, 2020. **5**(7): p. e002280.
39. National Bureau of Statistics, *Demographic Statistics Bulletin*. 2021, National Bureau of Statistics Nigeria.
40. Groves, R.M., et al., *Survey methodology*. 2011: John Wiley & Sons.
41. Valliant, R. and J.A. Dever, *Survey weights: a step-by-step guide to calculation*. 2018: Stata Press College Station, TX.
42. Cazabon, D., et al., *Quality of tuberculosis care in high burden countries: the urgent need to address gaps in the care cascade*. *International Journal of Infectious Diseases*, 2017. **56**: p. 111-116.
43. Stallworthy, G., H.M. Dias, and M. Pai, *Quality of tuberculosis care in the private health sector*. *Journal of clinical tuberculosis and other mycobacterial diseases*, 2020. **20**: p. 100171.
44. Beyeler, N., J. Liu, and M. Sieverding, *A systematic review of the role of proprietary and patent medicine vendors in healthcare provision in Nigeria*. *PLoS One*, 2015. **10**(1): p. e0117165.
45. Konduri, N., E. Delmotte, and E. Rutta, *Engagement of the private pharmaceutical sector for TB control: rhetoric or reality?* *Journal of pharmaceutical policy and practice*, 2017. **10**(1): p. 1-13.
46. Prach, L.M., et al., *Care-seeking at patent and proprietary medicine vendors in Nigeria*. *BMC Health Services Research*, 2015. **15**(1): p. 1-12.
47. Das, J., et al., *Use of standardised patients to assess quality of tuberculosis care: a pilot, cross-sectional study*. *The Lancet infectious diseases*, 2015. **15**(11): p. 1305-1313.
48. Lönnroth, K., et al., *Public-private mix for DOTS implementation: what makes it work?* *Bulletin of the World Health Organization*, 2004. **82**: p. 580-586.
49. Pradhan, A., et al., *What 'outliers' tell us about missed opportunities for tuberculosis control: a cross-sectional study of patients in Mumbai, India*. *BMC public health*, 2010. **10**(1): p. 1-9.
50. Rosapep, L.A., et al., *Tuberculosis care quality in urban Nigeria: A cross-sectional study of adherence to screening and treatment initiation guidelines in multi-cadre networks of private health service providers*. *PLOS Global Public Health*, 2022. **2**(1): p. e0000150.
51. Oga-Omenka, C., et al., *Ease and equity of access to free DR-TB services in Nigeria-a qualitative analysis of policies, structures and processes*. *International Journal for Equity in Health*, 2020. **19**(1): p. 1-13.

52. Almeida, C.P.B.d., E.C. Skupien, and D.R. Silva, *Health care seeking behavior and patient delay in tuberculosis diagnosis*. *Cadernos de saude publica*, 2015. **31**: p. 321-330.
53. Meintjes, G., et al., *Patient and provider delay in tuberculosis suspects from communities with a high HIV prevalence in South Africa: a cross-sectional study*. *BMC infectious diseases*, 2008. **8**(1): p. 1-8.
54. Van der Werf, M., et al., *Health care seeking behaviour for tuberculosis symptoms in Kiev City, Ukraine*. *The international journal of tuberculosis and lung disease*, 2006. **10**(4): p. 390-395.
55. Meyssonier, V., et al., *Factors associated with delayed tuberculosis diagnosis in China*. *The European Journal of Public Health*, 2013. **23**(2): p. 253-257.
56. Tattevin, P., et al., *Factors associated with patient and health care system delay in the diagnosis of tuberculosis in France*. *The international journal of tuberculosis and lung disease*, 2012. **16**(4): p. 510-515.
57. He, Y., et al., *Total delay in treatment among tuberculous meningitis patients in China: a retrospective cohort study*. *BMC infectious diseases*, 2017. **17**(1): p. 1-5.
58. Field, N., et al., *Missed opportunities in TB diagnosis: a TB process-based performance review tool to evaluate and improve clinical care*. *BMC Public Health*, 2011. **11**(1): p. 1-7.
59. Sendagire, I., et al., *Long delays and missed opportunities in diagnosing smear-positive pulmonary tuberculosis in Kampala, Uganda: a cross-sectional study*. *PLOS one*, 2010. **5**(12): p. e14459.
60. Divala, T.H., et al., *Missed opportunities for diagnosis and treatment in patients with tuberculosis symptoms: a systematic review*. 2020.
61. Abimbola, S., et al., *Transaction costs of access to health care: Implications of the care-seeking pathways of tuberculosis patients for health system governance in Nigeria*. *Global Public Health*, 2015. **10**(9): p. 1060-1077.
62. Subbaraman, R., et al., *Constructing care cascades for active tuberculosis: a strategy for program monitoring and identifying gaps in quality of care*. *PLoS medicine*, 2019. **16**(2): p. e1002754.
63. Millen, S.J., et al., *The effect of diagnostic delays on the drop-out rate and the total delay to diagnosis of tuberculosis*. *PloS one*, 2008. **3**(4): p. e1933.
64. Teo, A.K.J., et al., *Determinants of delayed diagnosis and treatment of tuberculosis in Cambodia: a mixed-methods study*. *Infectious diseases of poverty*, 2020. **9**: p. 1-12.
65. Hazarika, I., *Role of private sector in providing tuberculosis care: evidence from a population-based survey in India*. *Journal of global infectious diseases*, 2011. **3**(1): p. 19.
66. Pardeshi, G., et al., *Tuberculosis patients not covered by treatment in public health services: findings from India's National Family Health Survey 2015–16*. *Tropical Medicine & International Health*, 2018. **23**(8): p. 886-895.
67. Johansson, E., et al., *Gender and tuberculosis control: perspectives on health seeking behaviour among men and women in Vietnam*. *Health policy*, 2000. **52**(1): p. 33-51.
68. Onyeonoro, U.U., et al., *Evaluation of patient satisfaction with tuberculosis Services in Southern Nigeria*. *Health services insights*, 2015. **8**: p. HSI. S27177.
69. Rintiswati, N., et al., *Journeys to tuberculosis treatment: a qualitative study of patients, families and communities in Jogjakarta, Indonesia*. *BMC Public Health*, 2009. **9**(1): p. 1-10.

70. Sadiq, H. and A. Muynck, *Health care seeking behaviour of pulmonary tuberculosis patients visiting TB Center Rawalpindi*. JOURNAL-PAKISTAN MEDICAL ASSOCIATION, 2001. **51**(1): p. 10-15.
71. Sreeramareddy, C.T., et al., *Delays in diagnosis and treatment of pulmonary tuberculosis in India: a systematic review*. The International Journal of Tuberculosis and Lung Disease, 2014. **18**(3): p. 255-266.
72. Needham, D.M., et al., *Patient care seeking barriers and tuberculosis programme reform: a qualitative study*. Health Policy, 2004. **67**(1): p. 93-106.
73. Fochsen, G., et al., *Health care seeking among individuals with cough and tuberculosis: a population-based study from rural India*. The international journal of tuberculosis and lung disease, 2006. **10**(9): p. 995-1000.
74. Senkoro, M., et al., *Health care-seeking behaviour among people with cough in Tanzania: findings from a tuberculosis prevalence survey*. The international journal of tuberculosis and lung disease, 2015. **19**(6): p. 640-646.
75. Needham, D.M., et al., *Socio-economic, gender and health services factors affecting diagnostic delay for tuberculosis patients in urban Zambia*. Tropical Medicine & International Health, 2001. **6**(4): p. 256-259.
76. Storla, D.G., S. Yimer, and G.A. Bjune, *A systematic review of delay in the diagnosis and treatment of tuberculosis*. BMC public health, 2008. **8**(1): p. 1-9.
77. Bronner Murrison, L., et al., *How do patients access the private sector in Chennai, India? An evaluation of delays in tuberculosis diagnosis*. The International Journal of Tuberculosis and Lung Disease, 2016. **20**(4): p. 544-551.
78. Klinton, J.S., C. Oga-Omenka, and P. Heitkamp, *TB and COVID–Public and private health sectors adapt to a new reality*. 2020, Elsevier. p. 100199.
79. Migliori, G.B., et al., *Worldwide effects of coronavirus disease pandemic on tuberculosis services, January–April 2020*. Emerging infectious diseases, 2020. **26**(11): p. 2709.