

Associations of hypertension and antenatal care-seeking with perinatal mortality: A nested case-control study in rural Bangladesh

Allyson P. Bear^{1,#a,*}, Wendy L. Bennett², Joanne Katz¹, Kyu Han Lee¹, Atique Iqbal Chowdhury³, Sanwarul Bari³, Shams El Arifeen³, Emily S. Gurley¹

¹ Department of International Health, Johns Hopkins Bloomberg School of Public Health, Baltimore, Maryland, USA

² Division of General Internal Medicine, Department of Medicine, Johns Hopkins School of Medicine, Baltimore, Maryland, USA

³ Division of Maternal and Child Health, International Centre for Diarrheal Disease Research, Bangladesh, Dhaka, Bangladesh

^{#a} Current address: International Development Division, Abt Associates, Rockville, Maryland, USA

*Corresponding Author

Email: allyson_bear@abtassoc.com (APB)

1 **Abstract**

2 Maternal hypertension may be an underrecognized but important risk factor for perinatal death in low
3 resource settings. We investigated the association of maternal hypertension and perinatal mortality in
4 rural Bangladesh.

5 This nested, matched case-control study used data from a 2019 cross-sectional survey and demographic
6 surveillance database in Baliakandi, Bangladesh. We randomly matched each pregnancy ending in
7 perinatal death with five pregnancies in which the neonate survived beyond seven days based on
8 maternal age, education, and wealth quintile. We estimated associations of antenatal care-seeking and
9 self-reported hypertension with perinatal mortality using conditional logistic regression and used
10 median and interquartile ranges to assess the mediation of antenatal care by timing or frequency.

11 Among 191 cases and 934 matched controls, hypertension prevalence was 14.1% among cases and 7.7%
12 among controls. Compared with no diagnosis, the probability of perinatal death was significantly higher
13 among women with a pre-gestational hypertension diagnosis (OR 2.90, 95% CI 1.29, 6.57), but not
14 among women with diagnosis during pregnancy (OR 1.68, 95% CI 0.98, 2.98). We found no association
15 between the number of antenatal care contacts and perinatal death ($p=0.66$). Among women with
16 pre-gestational hypertension who experienced a perinatal death, 78% had their first antenatal contact in
17 the sixth or seventh month of gestation.

18 Hypertension was more common among rural women who experience a perinatal death. Greater effort
19 to prevent hypertension prior to conception and provide early maternity care to women with
20 hypertension could improve perinatal outcomes in rural Bangladesh.

21 **Introduction**

22 Hypertensive disorders of pregnancy include maternal chronic hypertension, pregnancy-induced
23 hypertension, pre-eclampsia, and eclampsia. Globally, these conditions are estimated to complicate 5–
24 10% of all pregnancies and are responsible for 16% of the estimated 2.6 million stillbirths and 50% of the
25 estimated 2.9 million neonatal deaths each year.^{1–6} In 2010, an estimated 224 million women of
26 reproductive age across the world had chronic hypertension.⁷

27 Between 2011 and 2018, the prevalence of hypertension in Bangladeshi women over the age of 35
28 increased from 32% to 45%.^{8,9} In 2018, the prevalence of hypertension in women aged 18–34 was
29 12.5%.⁸ The burden of pregnancy-induced or chronic hypertension in pregnancy is less well understood
30 in the Bangladesh context, as is its impact on the fetus or neonate. In 2018, neonatal mortality in
31 Bangladesh accounted for two-thirds of child mortality (3% of live births). Perinatal mortality, or death
32 occurring from 28 weeks’ gestation through the seventh day of life, occurred in 4.8% of pregnancies in
33 Bangladesh, of which 52% were stillbirths.^{8,9}

34 Women are encouraged to seek early and regular antenatal care from a medically qualified provider to
35 ensure a healthy pregnancy and safe birth.¹⁰ In Bangladesh, between 2014 and 2018, the percentage of
36 women receiving any antenatal care from a medically qualified provider increased from 64% to 82%.^{8,11}
37 In 2018, 42% of women in rural areas received four or more antenatal care contacts during pregnancy,
38 although this increase in care seeking has not corresponded with a reduction in perinatal mortality.^{8,12}

39 The objective of this study was to investigate the association between maternal hypertension and the
40 risk of perinatal mortality in rural Bangladesh, and whether that association was mediated by antenatal
41 care.

42 **Methods**

43 **Study Setting and Study Design**

44 This nested, matched case-control study was a sub-study of the Child Health and Mortality Prevention
45 Surveillance (CHAMPS) project site in the Baliakandi sub-district of Bangladesh. CHAMPS Bangladesh
46 began active population-based demographic surveillance in September 2017 in Baliakandi on a
47 population of approximately 220,000. The details of CHAMPS methods have been published
48 elsewhere.^{13,14} Ethical approval for the study was provided by the Ethical Review Committee of the
49 International Centre for Diarrhoeal Disease Research, Bangladesh.

50 **Cross sectional survey**

51 From April to August 2019, we conducted a single survey among married women of reproductive age in
52 the CHAMPS Baliakandi demographic surveillance system. The survey tool was based on the
53 Demographic and Health Survey (DHS) Program and the WHO STEPwise approach to surveillance
54 surveys.^{15,16} The questions were translated into Bengali and validated through prior national
55 surveys.^{8,9,11,17} All married women of reproductive age living in households with a child (living or dead)
56 under five years of age, or a woman currently pregnant or pregnant within the previous 12 months,
57 were eligible to participate. One week prior to the start of data collection in each block of the
58 demographic surveillance system, a listing of households meeting the eligibility criteria was generated
59 using CHAMPS data. Data collectors conducted face-to-face interviews after taking written informed
60 consent from the woman. If the woman was under 18 years of age, informed assent was taken and
61 witnessed by a guardian from the household. Data collectors conducted up to nine follow-up visits to
62 complete the data collection, with women self-reporting previous screenings, diagnoses of diabetes and
63 hypertension and timing of any diagnoses, the numbers of antenatal care contacts they had during
64 current and recent pregnancies, and the location, type of health care provider, and services rendered.

65 No medical records were available to confirm the self-reported information.

66 Demographic surveillance databases from parent cohort study

67 We used the CHAMPS demographic surveillance database dated February 26, 2020 to identify all
68 singleton pregnancy outcomes among survey respondents to include those outcomes which took place
69 up to one year before or 14 days after the date of the survey. We only considered singleton pregnancies
70 for this analysis, as multiparity is an independent risk factor for perinatal death.^{12,18} We extracted
71 demographic, socio-economic and pregnancy history information for each woman with an eligible
72 pregnancy from the CHAMPS demographic surveillance database by linking unique identification
73 numbers.

74 Outcome: Perinatal Death

75 Perinatal death was defined as a pregnancy ending in the death of the offspring between the completion
76 of 28 weeks gestation and seven days following delivery.¹⁹ Deaths occurring after 28 weeks of
77 pregnancy, but before or during birth were classified as a stillbirth; those occurring between 0 and 7
78 completed days after birth were classified as early neonatal deaths.¹⁹

79 Exposure: Hypertension

- 80 • Any hypertension: Any self-reported diagnosis of hypertension, regardless of timing.
- 81 • Presumed pre-gestational (chronic) hypertension: Self-reported diagnosis of hypertension at any
82 time prior to the index pregnancy.
- 83 • Presumed gestational hypertension: Self-reported diagnosis of hypertension during or after the
84 index pregnancy, in the absence of any self-reported previous diagnosis of hypertension. We
85 assumed that hypertension diagnosed post-partum was likely due to unresolved hypertension
86 that was present during pregnancy.

87 **Data Analysis**

88 **Selection of Cases and Controls**

89 Cases of pregnancies ending in a perinatal death were identified by comparing the date of pregnancy
90 outcome and date of the woman's last menstrual period preceding the pregnancy. Eligibility to serve as
91 a matched control was defined as a pregnancy ending in a live birth in which the neonate survived
92 beyond seven days, such a pregnancy being identified by the absence of a reported death within the
93 first seven days of life in the CHAMPS demographic surveillance system. Among cases and eligible
94 controls, we excluded pregnancies in women who reported no previous screening for hypertension and
95 pregnancies for which we had no antenatal care information. For women who had more than one
96 eligible pregnancy, we selected the pregnancy with an outcome closest to the survey date.

97 **Matching**

98 Based on a literature review of confounders for the relationship between hypertensive disorders of
99 pregnancy and perinatal mortality we matched on the following characteristics: age group (<20, 20–24,
100 25–29, 30–34, 35–39, 40+), wealth quintile, and educational attainment (none, primary, secondary,
101 post-secondary).^{8,20–25} The wealth quintile was constructed using the DHS wealth index score.^{26,27} We
102 randomly matched, without replacement, each case with up to five controls. For cases with fewer than
103 five matched controls, we conducted the analysis with the controls as matched.
104 Using summary statistics and chi-squared tests, we examined the differences in demographic,
105 hypertension, and pregnancy characteristics between cases and controls. We then used conditional
106 logistic regression in the matched case-control groups to estimate probability ratios for perinatal death
107 by any hypertension diagnosis, nature of hypertension, and number of antenatal care contacts with a
108 qualified provider (0, <4, 4+) for the index pregnancy. Looking at median and interquartile ranges for

109 antenatal care timing and frequency, we explored the relationship between antenatal care-seeking, the
110 type of hypertension, and perinatal death. $P < 0.05$ was considered statistically significant for all analyses.

111 **Results**

112 A total of 4,550 pregnancies met the eligibility criteria for inclusion in the study, including 201 perinatal
113 deaths (Fig 1). The overall perinatal mortality rate was 44 per 1,000 pregnancies (4.4%), which was
114 consistent with national surveys.^{8,11} Among women with eligible pregnancies, 97.5% reported screening
115 for hypertension at least once in their lifetimes. Of those screened, 415 (9.4%) reported a diagnosis of
116 hypertension. A total of 216 (4.7%) pregnancies met exclusion criteria, leaving 4,333 unique women with
117 pregnancies eligible for matching, including 191 cases of perinatal death (Fig 1). After matching, 10 cases
118 had greater than one but fewer than five matched controls. The final analysis included 191 cases and
119 934 matched controls (Fig 1). There were no cases of perinatal death among 19 pregnancies in women
120 over 40 years of age. This age group was dropped from the analysis.

121 Fig 1. Sample selection of women, nested case-control study, hypertension and perinatal mortality in
122 Baliakandi, Bangladesh, 2019

123 Among women who experienced a perinatal death, 79% (151/191) were under 30 years of age, and over
124 two-thirds (69%, 131/191) had completed secondary education or higher (Table 1). There were fewer
125 cases of perinatal death among women in the highest wealth quintile (12.6%) compared with lower
126 wealth quintiles. Slightly more than half (56%) of perinatal deaths were classified as stillbirths (Table 1).
127 Women who experienced a perinatal death were more likely to report being diagnosed with
128 hypertension compared with controls (14.1% vs. 7.7%, $p < 0.01$), and to have pre-gestational high blood
129 pressure (5.2% vs. 2.0%, $p = 0.01$). The proportion of women who had no contact with a qualified health
130 care provider during pregnancy was similar between cases (18.5%) and controls (20.1%) (Table 1).

131 Table 1. Comparisons of socio-economic characteristics, health history, and care seeking in pregnancy
 132 between cases and matched controls, Baliakandi, Bangladesh, 2019

Characteristic	Cases of perinatal death (n = 191)	Matched Controls (n = 934)	P value
Mean maternal age in years at the time of birth	23.6	23.8	0.75
Maternal Age in Years			1.00
<20	55 (28.8)	271 (29.0)	
20–24	64 (33.5)	318 (34.0)	
25–29	32 (16.7)	154 (16.5)	
30–34	28 (14.7)	138 (14.8)	
35–39	12 (6.3)	53 (5.7)	
Education Completed			1.00
None	13 (6.8)	53 (5.7)	
Primary	47 (24.6)	226 (24.2)	
Secondary	91 (47.6)	455 (48.7)	
Post-Secondary	40 (20.9)	200 (21.4)	
Household Wealth Quintile			1.00
Lowest	42 (22.0)	208 (22.3)	
Second	38 (20.0)	186(19.9)	
Middle	47 (24.6)	222 (23.8)	
Fourth	40 (20.9)	198 (21.2)	
Highest	24 (12.6)	120 (12.8)	
Timing of Perinatal Death			
Stillbirth	108 (56.5)	NA	
Early Neonatal Death	83 (43.5)	NA	
Any Hypertension Diagnosis	27 (14.1)	72 (7.7)	<0.01*
Nature of Hypertension			<0.01*
None	164 (85.9)	862 (92.3)	
Presumed pre-gestational hypertension	10 (5.2)	19 (2.0)	
Presumed gestational hypertension	17 (8.9)	53(5.7)	
Antenatal Care Contacts with a Qualified Provider			0.80
None	36 (18.5)	192 (20.1)	
<4	115 (60.2)	562 (60.2)	
4 or more	40 (20.9)	180 (19.3)	

133 * denotes significance at the p<0.05 level

134

135 **Hypertension and Perinatal Death**

136 Women who reported any hypertension diagnosis were more likely to experience perinatal death, and
137 risk of perinatal death differed by timing of hypertension diagnosis. Women with pre-gestational
138 hypertension experienced a 2.9-fold greater risk of perinatal death (OR 2.90, 95% CI 1.29, 6.57) than
139 women who reported no diagnosis. Women with presumed gestational hypertension experienced a 68%
140 increased probability of perinatal death (OR 1.68, 95% CI 0.98, 2.98) than women who reported no
141 diagnosis, but this was not statistically significant.

142 Table 2. Conditional logistic regression estimating univariate associations of hypertension status and
143 antenatal care with perinatal death, matched on age group, educational attainment, and wealth
144 quintile, Baliakandi, Bangladesh, 2019

Characteristic	Matched Odds Ratio (95% CI)
Any Hypertension Diagnosis	1.97 (1.23,3.19)*
Nature of Hypertension	
None	Ref
Presumed pre-gestational hypertension	2.90 (1.29,6.57)*
Presumed gestational hypertension	1.68 (0.95,2.98)
Antenatal Care Contacts with a Qualified Provider	
None	Ref
<4	1.11 (0.73,1.67)
4 or more	1.22 (0.73,2.02)

145 * denotes significance at the $p < 0.05$ level

146

147 **Antenatal Care Service Contacts**

148 We found no association between the number of antenatal care contacts with a qualified provider and
149 perinatal death (Table 2). Among women who experienced a perinatal death, 81% sought antenatal care
150 at least once from a medically qualified provider. We evaluated the frequency and timing of antenatal

151 care among women with any hypertension diagnosis by perinatal outcome (Fig 2). Across all categories
152 of perinatal outcome and hypertension status, the total number of contacts with qualified health care
153 providers in each pregnancy was below both the national standard of four and the WHO
154 recommendation of eight antenatal care visits.¹⁰ Women with presumed gestational hypertension had a
155 higher median number of contacts with medically qualified providers (median 3, IQR 1,4) than women
156 with presumed pre-gestational hypertension (median 2, IQR 1,3) and women never diagnosed with
157 hypertension (median 2, IQR 1,3), and this difference was statistically significant ($p=0.02$). The median
158 number of contacts with a qualified health care provider did not differ significantly by perinatal outcome
159 within hypertension groups ($p=0.66$).

160 Fig 2. Number of antenatal service contacts by nature of hypertension and pregnancy outcome,
161 Baliakandi, Bangladesh, 2019 (n=1,125)

162 Among women who sought any care during pregnancy, 33% (339/1,023) obtained their first antenatal
163 service from a non-qualified provider. Most of these service contacts (90%, 306/339) took place at home
164 in median month four (IQR 2,5) or at a satellite clinic close to home at median month three (IQR 3,5).
165 Among women who sought care with a medically qualified provider, the median first antenatal care
166 contact was in the second trimester of pregnancy in all groups (Fig 3). We found no difference in median
167 timing of first contact with a medically qualified provider by pregnancy outcome among women with no
168 history of hypertension ($p=0.42$) (Fig 3). Women with presumed pre-gestational hypertension who
169 experienced a perinatal death had their median first contact with a qualified provider later than any
170 other group, in the sixth month of gestation (IQR 6, 8) (Fig 3), and 89% of these women sought this care
171 in a health care facility (clinic or hospital). There was high variation in timing of first antenatal service
172 contact within almost all groups, the exception being the group of women with presumed
173 pre-gestational hypertension who experienced a perinatal death, 78% (7 out of 9) of which had their
174 first antenatal service contact with a qualified care provider in the sixth or seventh month of pregnancy.

175 Fig 3. Month of first contact with a medically qualified provider during pregnancy, by nature of
176 hypertension and pregnancy outcome, Baliakandi, Bangladesh, 2019 (n=897)

177 Discussion

178 This retrospective case-control study of 1,125 women found that any pre-pregnancy history of
179 hypertension was a significant risk factor for perinatal death in Baliakandi sub-district, Bangladesh.
180 Antenatal care was suboptimal in timing and frequency among all groups of women regardless of
181 hypertension status or pregnancy outcome, and the frequency of antenatal care-seeking was not
182 associated with fetal or newborn survival.

183 Chronic hypertension in younger women has not been well studied in Bangladesh. The first national
184 hypertension prevalence survey of women 18–34 years of age was published in 2020.⁸ Pre-eclampsia is a
185 well-recognized complication of pregnancy in Bangladesh, and previous studies have found that
186 pre-eclampsia contributes to 24% of maternal mortality, 7% of stillbirths, and 2.9% of neonatal
187 deaths.^{12,28,29} Khanam et. al found that probable pregnancy-induced hypertension was a significant risk
188 factor for stillbirth (IRR = 1.8, 95% CI 1.3–2.5) in Sylhet, Bangladesh.³⁰ This study suggests that underlying
189 chronic high blood pressure may be contributing more significantly to perinatal death than has been
190 previously recognized in Bangladesh. Future studies looking at the etiology of perinatal death should
191 attempt to better differentiate between underlying chronic disease and pregnancy-induced disease in
192 order to inform the development of effective public health and medical interventions for preventing
193 adverse pregnancy outcomes.

194 In all rural areas of Bangladesh, 21% of women seek no antenatal care in pregnancy, and only 20% are
195 seen four or more times by a qualified health care provider.⁸ Our study found similar antenatal
196 care-seeking patterns among women in Baliakandi.⁸ Baliakandi women in our study who experienced a

197 perinatal death had the same median number of antenatal care visits (three) from a qualified antenatal
198 care provider as rural women elsewhere in Bangladesh, with the median timing of first contact with a
199 qualified health care provider taking place in the fourth month of pregnancy.²⁹ Our study suggests that
200 this timing and frequency of antenatal care is insufficient to prevent adverse perinatal outcomes.
201 Additional research is needed to understand why this contact with the health care system did not have a
202 protective effect. Possible explanations could be related to poor quality of care by the health care
203 provider, late onset of care-seeking, or weak referral systems once complications were identified.^{31–34}
204 Women with a history of hypertension predating pregnancy and who experienced a perinatal death
205 sought care late in their pregnancies, possibly spurred by the onset of hypertension-induced
206 complications. Further qualitative research is needed to understand why women with pregnancies
207 complicated by hypertension, including women with a known history of disease, did not have more
208 frequent contact, as per national guidelines, with the health care system in order to effectively manage
209 their high-risk pregnancy.³⁵ Focused efforts to identify women with a history of disease and encourage
210 them to seek early and regular antenatal care from a hospital-level facility equipped to treat high-risk
211 pregnancies could be an effective intervention for improving outcomes in this high-risk group, but only if
212 those facilities are equipped with the personnel, equipment, supplies, and essential medicines to
213 effectively manage hypertension in pregnancy.^{2,6,34}
214 A limitation of this study is the potential for misclassification due to the absence of direct measurement
215 or medical records to confirm self-reported information on hypertension diagnosis and antenatal
216 care-seeking. We posit that a woman’s ability to correctly recall a pre-pregnancy diagnosis of
217 hypertension is independent of perinatal outcome, in which case misclassification would result in our
218 findings being an underestimate of the true magnitude of the association between hypertension and
219 perinatal death. It is possible, in the effort to understand the causes of adverse events, that women who
220 experienced a perinatal death were more likely to be correctly identified as hypertensive than those

221 with a healthy outcome, leading to differential misclassification by outcome and an overestimate of the
222 association between hypertension diagnosis, either during or after pregnancy, and perinatal death. The
223 marginal association between presumed gestational hypertension and perinatal death (OR 1.68, 95% CI
224 0.98, 2.98) suggests a clear association that would have been statistically significant with a larger sample
225 size. These data provide a baseline for future longitudinal research to both investigate the temporality
226 of hypertension and further elucidate how hypertension affects pregnancy outcomes throughout a
227 woman's childbearing years in rural, resource-constrained settings.

228 The Government of Bangladesh is committed to reducing the neonatal mortality rate to 18 deaths per
229 1,000 live births by 2022.³⁶ In order to achieve both this goal and that of similar reductions in stillbirths,
230 greater emphasis should be placed on identification of women with a history of hypertension and
231 improving their access to and utilization of skilled antenatal and delivery care. Consistent with national
232 guidelines, antenatal care for women with pre-gestational hypertension should be early, frequent, and
233 take place in hospital settings with the trained personnel, equipment, supplies, and medicines necessary
234 for effective management of complicated pregnancies.³⁵ Raising community awareness of the dangers
235 of hypertension in pregnancy, especially when there is a diagnosis of hypertension prior to pregnancy,
236 should be included in any programs introduced to address low care-seeking among these high-risk
237 women.³⁵

238 **References**

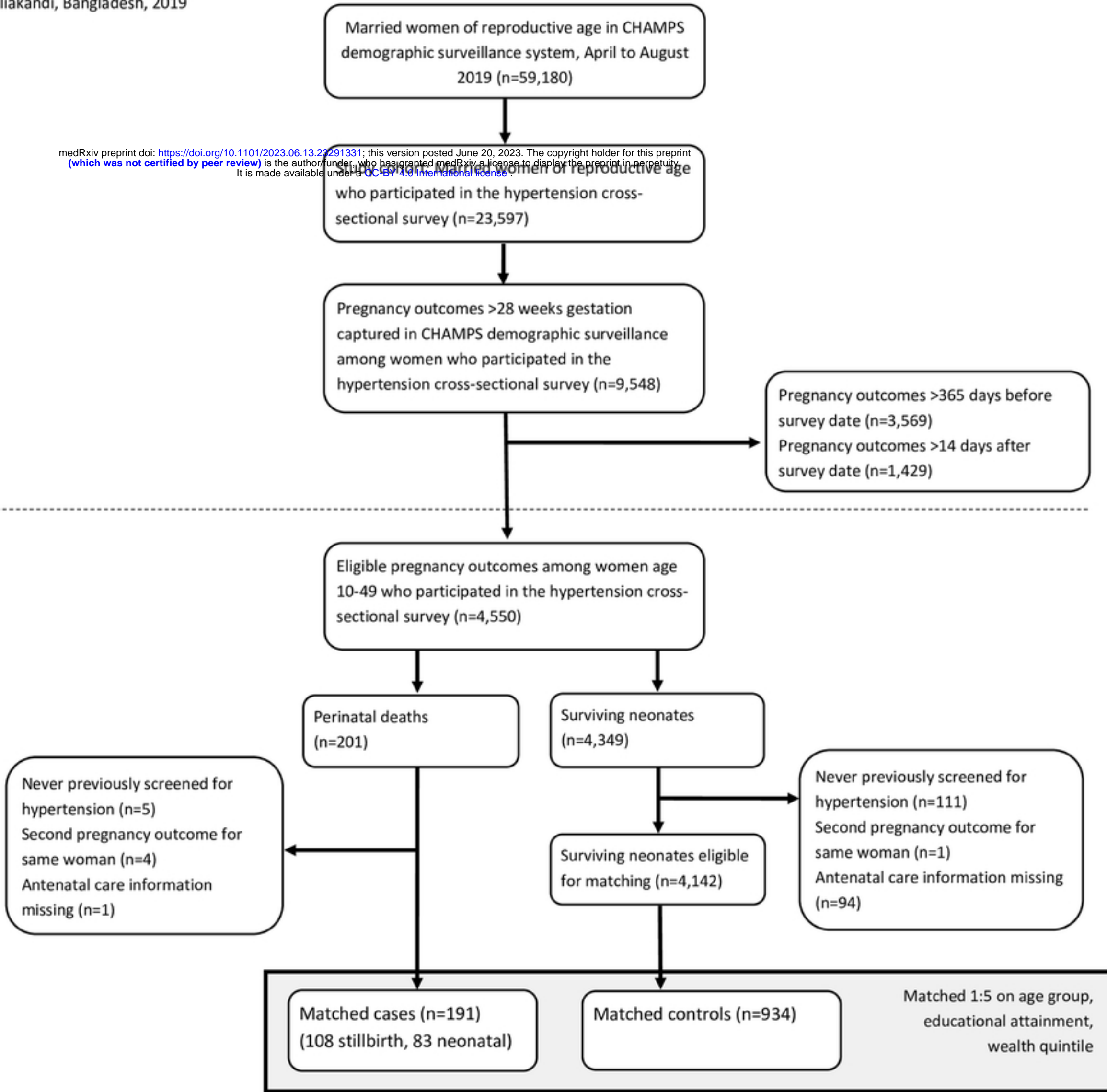
- 239 1. Hutcheon JA, Fellow PD, Lisonkova S, Joseph KS. Epidemiology of pre-eclampsia and the other
240 hypertensive disorders of pregnancy. *Best Pract Res Clin Obstet Gynaecol*. 2011 Aug 1;25(4):391–
241 403.
- 242 2. Magee LA, Pels A, Helewa M, Rey E, von Dadelszen P, Audibert F, et al. Diagnosis, evaluation, and
243 management of the hypertensive disorders of pregnancy. *Pregnancy Hypertension: An*
244 *International Journal of Women's Cardiovascular Health*. 2014 Apr 1;4(2):105–45.
- 245 3. Lawn JE, Blencowe H, Oza S, You D, Lee AC, Waiswa P, et al. Every Newborn: progress, priorities,
246 and potential beyond survival. *The Lancet*. 2014 Jul;384(9938):189–205.

- 247 4. Lawn JE, Blencowe H, Waiswa P, Amouzou A, Mathers C, Hogan D, et al. Stillbirths: rates, risk
248 factors, and acceleration towards 2030. *Lancet*. 2016;387:587–603.
- 249 5. Vogel JP, Souza JP, Mori R, Morisaki N, Lumbiganon P, Laopaiboon M, et al. Maternal
250 complications and perinatal mortality: findings of the World Health Organization Multicountry
251 Survey on Maternal and Newborn Health. *BJOG*. 2014 Mar;121:76–88.
- 252 6. von Dadelszen P, Magee LA. Preventing deaths due to the hypertensive disorders of pregnancy.
253 *Best Pract Res Clin Obstet Gynaecol*. 2016 Oct 1;36:83–102.
- 254 7. Mills KT, Bundy JD, Kelly TN, Reed JE, Kearney PM, Reynolds K, et al. Global disparities of
255 hypertension prevalence and control. *Circulation*. 2016 Aug 9;134(6):441–50.
- 256 8. National Institute of Population Research and Training (NIPORT), Mitra and Associates and II.
257 Bangladesh Demographic and Health Survey 2017-18: Key Indicators. Dhaka, Bangladesh, and
258 Rockville, Maryland, USA; 2019.
- 259 9. National Institute of Population Research and Training (NIPORT), Mitra and Associates and II.
260 Bangladesh Demographic and Health Survey 2011. Dhaka, Bangladesh, and Rockville, Maryland;
261 2013.
- 262 10. World Health Organization. Standards for maternal and neonatal care. World Health
263 Organization; 2019.
- 264 11. National Institute of Population Research and Training (NIPORT), Mitra and Associates and
265 International. Bangladesh Demographic and Health Survey 2014. Dhaka, Bangladesh, and
266 Rockville, Maryland, USA; 2016.
- 267 12. Owais A, Faruque ASG, Das SK, Ahmed S, Rahman S, Stein AD. Maternal and Antenatal Risk
268 Factors for Stillbirths and Neonatal Mortality in Rural Bangladesh: A Case-Control Study.
269 Moormann AM, editor. *PLoS ONE*. 2013 Nov 7;8(11):e80164.
- 270 13. Cunningham SA, Shaikh NI, Nhalo A, Raghunathan PL, Kotloff K, Naser AM, et al. Health and
271 Demographic Surveillance Systems Within the Child Health and Mortality Prevention Surveillance
272 Network. *Clin Infect Dis*. 2019 Oct 9;69(4):S274–9.
- 273 14. Salzberg NT, Sivalogan K, Bassat Q, Taylor AW, Adedini S, El Arifeen S, et al. Mortality Surveillance
274 Methods to Identify and Characterize Deaths in Child Health and Mortality Prevention
275 Surveillance Network Sites. *Clin Infect Dis*. 2019 Oct 9;69(4):S262–73.
- 276 15. Riley L, Guthold R, Cowan M, Savin S, Bhatti L, Armstrong T, et al. The World Health Organization
277 STEPwise Approach to Noncommunicable Disease Risk-Factor Surveillance: Methods, Challenges,
278 and Opportunities. *Am J Public Health*. 2016 Jan;106(1):74–8.
- 279 16. ICF. DHS Model Questionnaire - Phase 7. Rockville, Maryland; 2015.
- 280 17. World Health Organization. Non-Communicable Disease Risk Factor Survey Bangladesh 2010.
281 Dhaka, Bangladesh: World Health Organization, South-East Asia Regional Office; 2011.
- 282 18. Ganchimeg T, Mori R, Ota E, Koyanagi A, Gilmour S, Shibuya K, et al. Maternal and perinatal
283 outcomes among nulliparous adolescents in low- and middle-income countries: a multi-country
284 study. *BJOG: An International Journal of Obstetrics & Gynaecology*. 2013 Dec 1;120(13):1622–30.
- 285 19. Perinatal mortality rate [Internet]. Family Planning and Reproductive Health Indicators Database.
286 2020 [cited 2021 Jan 18]. Available from:
287 https://www.measureevaluation.org/prh/rh_indicators/womens-health/nb/perinatal-mortality-r

- 288 ate-pmr
- 289 20. Tareque MI, Koshio A, Tiedt AD, Hasegawa T. Are the rates of hypertension and diabetes higher
290 in people from lower socioeconomic status in Bangladesh? Results from a nationally
291 representative survey. Ciccozzi M, editor. PLoS One. 2015 May 27;10(5):e0127954.
- 292 21. Fottrell E, Ahmed N, Shaha SK, Jennings H, Kuddus A, Morrison J, et al. Distribution of diabetes,
293 hypertension and non-communicable disease risk factors among adults in rural Bangladesh: a
294 cross-sectional survey. *BMJ Glob Health*. 2018;3:787.
- 295 22. Akter S, Jesmin S, Rahman MMMdM, Islam MdM, Khatun MostT, Yamaguchi N, et al. Higher
296 Gravidity and Parity Are Associated with Increased Prevalence of Metabolic Syndrome among
297 Rural Bangladeshi Women. *PLoS One*. 2013 Aug 2;8(8):e68319.
- 298 23. Bishwajit G, Yaya S, Seydou I. Diabetes mellitus and high blood pressure in relation to BMI among
299 adult non-pregnant women in Bangladesh. *Diabetes and Metabolic Syndrome: Clinical Research
300 and Reviews*. 2016 Dec 13;11:S217–21.
- 301 24. Shih YH, Scannell Bryan M, Parvez F, Uesugi KH, Shahriar M, Ahmed A, et al. Gravidity, parity,
302 blood pressure and mortality among women in Bangladesh from the HEALS cohort. *BMJ Open*.
303 2020 Aug 26;10(8).
- 304 25. Jang M, Lee Y, Choi J, Kim B, Kang J, Kim Y, et al. Association between parity and blood pressure
305 in Korean women: Korean National Health and Nutrition Examination Survey, 2010–2012. *Korean
306 J Fam Med*. 2015;36(6):341–8.
- 307 26. Rutstein SO. *The DHS Wealth Index: Approaches for Rural and Urban Areas*. Rockville, Maryland;
308 2008 Oct.
- 309 27. Rutstein SO, Johnson K. *The DHS wealth index*. DHS Comparative Reports No. 6. Calverton,
310 Maryland; 2004 Aug.
- 311 28. National Institute of Population Research and Training (NIPORT), MEASURE Evaluation, and icddr
312 b. *Bangladesh Maternal Mortality and Health Care Survey 2010*. Dhaka, Bangladesh; 2012.
- 313 29. MEASURE Evaluation, National Institute of Population Research and Training, International
314 Centre for Diarrhoeal Disease Research, Bangladesh and ME. *Bangladesh: Maternal Mortality and
315 Health Care Survey 2016: Preliminary Report*. Dhaka, Bangladesh and Chapel Hill, North Carolina,
316 USA; 2017.
- 317 30. Khanam R, Ahmed S, Creanga AA, Begum N, Koffi AK, Mahmud A, et al. Antepartum
318 complications and perinatal mortality in rural Bangladesh. *BMC Pregnancy and Childbirth*.
319 2017;17(81).
- 320 31. Shamba D, Tancred T, Hanson C, Wachira J, Manzi F. Delayed illness recognition and multiple
321 referrals: A qualitative study exploring care-seeking trajectories contributing to maternal and
322 newborn illnesses and death in southern Tanzania. *BMC Health Services Research*. 2019 Apr
323 11;19(1):225.
- 324 32. Ahmed J, Alam A, Khokhar S, Khowaja S, Kumar R, Greenow CR. Exploring women’s experience of
325 healthcare use during pregnancy and childbirth to understand factors contributing to perinatal
326 deaths in Pakistan: A qualitative study. Ornaghi S, editor. *PLOS ONE*. 2020 May 7;15(5):e0232823.
- 327 33. Edgard-Marius O, Charles SJ, Jacques S, Justine GCC, Virginie MA, Ibrahim MA, et al.
328 Determinants of Low Antenatal Care Services Utilization during the First Trimester of Pregnancy
329 in Southern Benin Rural Setting. *Universal Journal of Public Health*. 2015 Sep;3(5):220–8.

- 330 34. Jo Y, Alland K, Ali H, Mehra S, Lefevre AE, Pak S, et al. Antenatal care in rural Bangladesh: Current
331 state of costs, content and recommendations for effective service delivery. BMC Health Services
332 Research. 2019 Nov 21;19(1):861.
- 333 35. Maternal and Neonatal Health Standard Operating Procedures. Dhaka, Bangladesh; 2017.
- 334 36. Welfare M of H and F. 4th Bangladesh Health, Population and Nutrition Sector Programme,
335 January 2017-June 2022. Dhaka, Bangladesh; 2017.
- 336

Figure 1. Analytic cohort of women, nested case-control study of hypertension and the risk of perinatal mortality in a rural Bangladesh cohort, Baliakandi, Bangladesh, 2019



medRxiv preprint doi: <https://doi.org/10.1101/2023.06.13.23291331>; this version posted June 20, 2023. The copyright holder for this preprint (which was not certified by peer review) is the author/funder, who has granted medRxiv a license to display the preprint in perpetuity. It is made available under a [CC-BY 4.0 International license](https://creativecommons.org/licenses/by/4.0/).

Figure 1

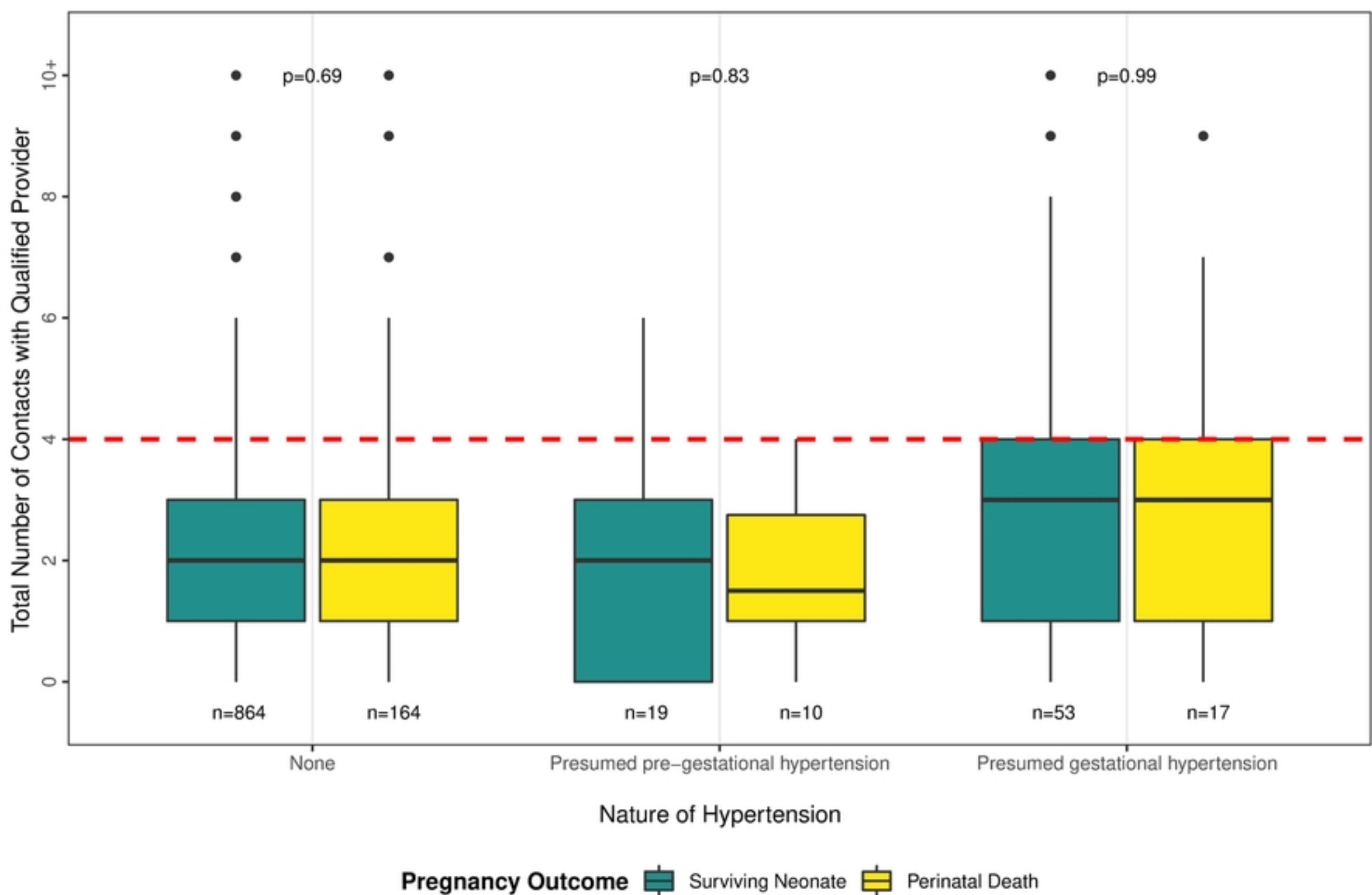


Figure 2

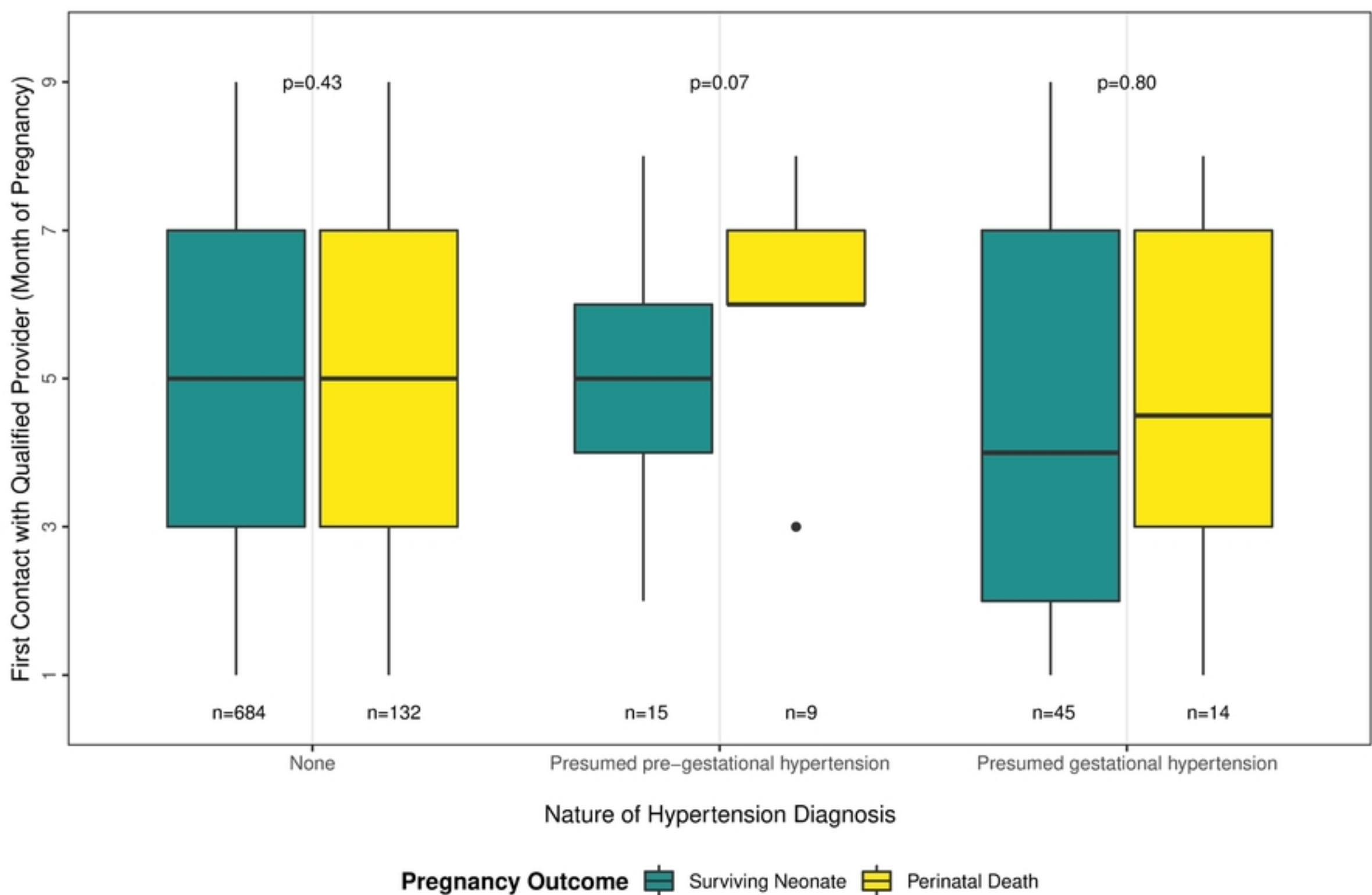


Figure 3