

# 1 Importation models for travel-related SARS-CoV-2 cases reported in 2 Newfoundland and Labrador during the COVID-19 pandemic

3 Zahra Mohammadi<sup>1</sup>, Monica Cojocar<sup>1</sup>, Julien Arino<sup>2</sup>, Amy Hurford<sup>3\*</sup>

4 <sup>1</sup>Department of Mathematics and Statistics, University of Guelph, Guelph, N1G 2W1, ON, Canada.

5 <sup>2</sup>Department of Mathematics, University of Manitoba, Winnipeg, R3T 2N2, MB, Canada.

6 <sup>3</sup>Department of Mathematics and Statistics, Biology Department, Memorial University of  
7 Newfoundland, St. John's, A1C 5S7, NL, Canada.

8 \*Corresponding author(s). E-mail(s): [ahurford@mun.ca](mailto:ahurford@mun.ca);

9 Contributing authors: [zaahra.mohammadi@gmail.com](mailto:zaahra.mohammadi@gmail.com); [mcojocar@uoguelph.ca](mailto:mcojocar@uoguelph.ca);  
10 [Julien.Arino@umanitoba.ca](mailto:Julien.Arino@umanitoba.ca);

## 11 Abstract

12 During the COVID-19 pandemic, the World Health Organization (WHO) updated guidelines advising that a  
13 risk-assessment framework considering local epidemiology and health services capacity be used to determine if  
14 travel measures should be implemented. Data, analysis, and models are needed to support these updated WHO  
15 guidelines. In 2020 and 2021, the Canadian province of Newfoundland and Labrador (NL) implemented travel  
16 measures that affected most travelers, including non-residents of NL, and NL residents that work outside the  
17 province. We used multiple data sources to estimate the total travel volume arriving in NL before and during the  
18 pandemic. We found that during the pandemic, travel to NL decreased by 82%, and the percentage of travelers  
19 arriving from given origins changed with Québec decreasing from 14 to 4%, and Alberta increasing from 7  
20 to 17%. We formulated an importation model including many epidemiological details, however, a less detailed  
21 statistical model considering the product of infection prevalence and travel volume for each Canadian province  
22 and the territories better predicted daily travel-related cases of Canadian origin ( $R^2 = 0.55$ ). We conclude that  
23 the accuracy of importation models are limited more by data availability, particularly travel-related case data,  
24 and data quality, particularly between-country differences in infection reporting, than by the complexity and  
25 details of importation models. Our results are evidence that will inform future risk-assessment frameworks to  
26 support travel measure implementation decisions during public health emergencies.

27 **Keywords:** Importation, travel measures, SARS-CoV-2, Newfoundland and Labrador, travel-related cases, COVID-19,  
28 pandemic

## 29 1 Introduction

30 On January 31, 2020, due to an outbreak of SARS-CoV-2 in Wuhan, China the World Health Organization (WHO)  
31 advised other countries to expect SARS-CoV-2 cases and be prepared for outbreak containment, but measures that

would restrict travel and trade were explicitly not recommended (Grépin et al, 2021; World Health Organization, 2020d). State Parties were to notify WHO within 48 hours of the public health rationale and justification of measures that would significantly interfere with international traffic (World Health Organization, 2020d). Despite broad consensus prior to the pandemic that during a public health emergency travel measures significantly impacting travel and trade should not be implemented, during the initial phase of the COVID-19 pandemic most countries implemented such travel measures (Grépin et al, 2021; Piccoli et al, 2022; Shoichet, 2020). The next two years saw substantial variation in the implementation and strictness of travel measures between (Piccoli et al, 2022) and within (Reddy et al, 2021; Studdert et al, 2020) countries. In July 2021, WHO provided updated recommendations stating that international travel-related measures should be ‘proportionate to the public health risk’ and adapted to a country’s ‘specific epidemiological, health system and socioeconomic context’ and recommended a risk-based approach (World Health Organization, 2021).

The unprecedented implementation of travel measures during the initial phase of the COVID-19 pandemic may have been because COVID-19 was more challenging to detect and contain than H1N1 influenza A (Anderson et al, 2020; Grépin et al, 2021). The inconsistent implementation of travel measures during the first two years of the pandemic may have been due to the low quality of evidence to support policy. Systematic reviews (Burns et al, 2021; Grépin et al, 2021) report that travel measures may have had a positive impact on infectious disease outcomes and reduced and delayed imported SARS-CoV-2 cases from Wuhan, but that overall the quality of evidence was low. Most evidence was due to modelling studies with a lack of ‘real world’ data (Burns et al, 2021), with inconsistent parameter estimates and assumptions, and that overlooked the impact of undetected cases outside of China (Grépin et al, 2021). Guidelines that recommended against the implementation of travel measures may have been made when considering travel measures in isolation, and might not be robust when considering the coordinated implementation of both travel measures and community non-pharmaceutical interventions as occurs for an elimination strategy (Grépin et al, 2023; Martignoni et al, 2023).

Several studies have combined air travel volumes, SARS-CoV-2 epidemiology, and infection prevalence at traveler’s origins to estimate importation risk. Studies found that the Wuhan and China travel ban in early 2020 decreased the number of infections amongst air travelers originating from mainland China and entering other countries (Chinazzi et al, 2020; Wells et al, 2020), and have described the early spread of infection within China (Hossain et al, 2020). Importation modelling has been used to calculate the potential for COVID-19 spread between countries (Nakamura and Managi, 2020), to identify countries expected to have a high percentage of incidence due to importations (Russell et al, 2021), and to determine the effectiveness of post-arrival travel measures (Costantino et al, 2020; Yang et al, 2021).

Given the need for data and models to support decisions to implement travel measures during a pandemic, and because there are few data and guidelines to inform travel measure implementation within countries, we analyze data recorded in Newfoundland and Labrador (NL), a province of Canada that implemented travel measures during the COVID-19 pandemic. We consider multiple sources of travel volume data to minimize the impact of the limitations of each. We validate predictions to inform the best approaches to importation modelling. Other models that have been developed either do not consider travel volumes (Godin et al, 2021; Steyn et al, 2021), do not consider travel-related cases reported at the destination (Hincapie et al, 2022; Linka et al, 2020; Menkir et al, 2021; Russell et al, 2021), or do not distinguish between travel-related and community cases at the destination (Chinazzi et al, 2020; Costantino et al, 2020; Hossain et al, 2020; Wells et al, 2020), with only Yang et al (2021) and McCrone et al (2022) having previously considered all of these data types.

## 2 Methods

### 2.1 Background

Newfoundland and Labrador (NL; population: 510,550; Statistics Canada 2021) is the second smallest Canadian province, and has few points of entry. Most non-resident travelers to NL visit the island of Newfoundland (93%, Government of Newfoundland Labrador 2018, population: 483,895 Statistics Canada 2021) and arrive by air to St. John’s International airport. From May 4, 2020–June 30, 2021, the government of NL implemented travel measures that required non-residents to complete Travel Declaration Forms (TDFs) and self-isolate for 14 days after

arrival. Rotational workers, NL residents working in other provinces, are a significant proportion of the NL workforce (Hewitt et al, 2018), and during the COVID-19 pandemic were subject to specific self-isolation requirements and testing regimes (see SI Appendix 1, Table C7).

## 2.2 Data overview

### 2.2.1 Travel volume to NL

The travel volume that we estimate is all individuals that arrive in NL from other Canadian provinces and the territories, or international origins who might spread infections to the NL community, which we refer to as the ‘total travel volume’. The total travel volume includes arrivals by air, sea, and land ports of entry, crew members, and NL residents, including rotational workers, returning from travel. We consider three data sources that report travel volumes: International Air Transit Authority (IATA) flight passenger data; TDFs completed by non-NL residents and other non-exempt individuals upon arrival to NL during the COVID-19 pandemic; and Frontier Counts (FC) (Statistics Canada, 2020-2021) completed at the Canadian border. All of these data sources provides information on travel volumes from international origins, with the IATA and TDF data also reporting travel from other Canadian provinces and territories to NL. The three sources of travel volume data have some overlap and different limitations (summarised in Table 1), and when combined with tourism surveys from the Government of Newfoundland and Labrador (2020-2021), we were able to estimate correction factors to determine the total travel volume arriving in NL from January 2019 to March 2020, and September 2020 to May 2021 (SI Appendix 1, equation A1). After estimating the total travel volume, we then stratified arriving travelers as regular travelers or rotational workers, and by travel origins (SI Appendix 1, Section A.5, equations A3-A5).

**Table 1** Limitations of travel volume data sources. International Air Transport Authority (IATA,  $s = 1$ ), Travel Declaration Forms (TDF,  $s = 2$ ), and Frontier Counts (FC,  $s = 3$ ) report an origin (either Canada or international), but report travel volumes that exclude some travelers that might spread infections to NL residents. When exclusions apply to a particular data source and origin (Canada or international), the value of the indicator variable is 1 (and 0 otherwise). The magnitude of the correction for the exclusion is given in the Supplementary Information (Table A2, see also equation A1). The travel origin in TCAR reports ( $s = 4$ ) was not reported, but the information in these reports was used to estimate the volume of travelers excluded from the reported travel volumes for the other data sources.

s	Data Source	Time frame, $t$	Pandemic	Travel Mode	$\mathbb{1}_{\text{MODES}} =$	Origin, $i \in$	Traveler exclusions	$\mathbb{1}_{\text{EXCL}} =$
1	International Air Transport Authority (IATA)	Jan 2019 - March 2020 (monthly)	before	air	1	{CA, INT}	Crew	1 if $i = \text{CA}$ 0 if $i = \text{INT}$
2	Travel Declaration Forms (TDF)	Sep 2020 - May 2021 (daily)	during	air, sea, land	0	{CA, INT}	NL residents, crew, and other exempt travelers	1
3	Frontier Counts (FC)	Jan 2019 - May 2021 (monthly)	before and during	air, sea, land	0	{INT}	None	0
4	Department of Tourism, Culture, Arts, and Recreation (TCAR)	Jan 2019 - Dec 2021 (monthly)	before and during	air, sea, land	0	Unknown	NL residents	0

### 2.2.2 The infection status of departing travelers

We estimate infection prevalence at the travelers’ origin from daily incidence in the Canadian provinces and territories as reported by the Public Health Agency of Canada (SI Appendix 1, equation B6). These estimates include adjustments for reporting delays and are multiplied by a coefficient describing under-reporting in each of these regions based on seroprevalence data reported by the COVID Immunity TaskForce. As there are no similar data available for travelers of international origin, we assume that infection prevalence and under-reporting at the traveler’s country of origin is equal to that of the United States of America, where the TDF data reported that 24-50%

106 of international traveler’s arriving in NL during the pandemic were from the United States of America (SI Appendix  
107 1, Table A3).

108 For our epidemiological model (Section 2.3.1), we assume that the exposure date of infected travelers is uniformly  
109 distributed between 0 and 13 days prior to departure. This range was selected because any traveler infected more  
110 than 13 days prior to departure is unlikely to be infectious after arrival (Ferretti et al., 2020). Date of first symptom  
111 onset and Polymerase Chain Reaction (PCR) test sensitivity depends on the number of days since exposure. We  
112 assume that a fraction of infected travelers originating from Canada and internationally, and all travelers that test  
113 positive on pre-departure tests (see SI Appendix 1, Table C7), do not travel (SI Appendix 1, equation B12).

### 114 2.2.3 Post-arrival testing in NL

115 Travelers are reported as travel-related cases only if they test positive for SARS-CoV-2 in NL. Table C7 (see SI  
116 Appendix 1) summarizes different testing requirements applying to rotational workers and regular travelers arriving  
117 in NL.

### 118 2.2.4 Travel-related cases reported in NL

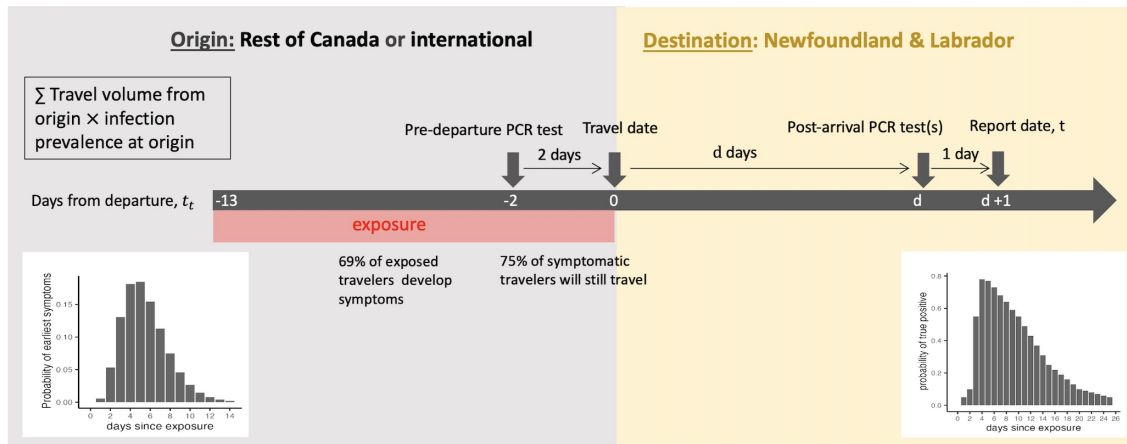
119 It is likely that a high proportion of SARS-CoV-2 infections were detected in arriving travelers due to manda-  
120 tory testing for anyone symptomatic, mandatory testing of rotational workers, intermittent requirements for some  
121 asymptomatic travelers to complete testing (SI Appendix 1, Table C8), and because there were few community  
122 outbreaks of COVID-19 in NL during this time (Hurford et al, 2021). Daily travel-related cases reported to the  
123 Newfoundland and Labrador Centre for Health Information (SI Appendix 1, Figure A1B) of Canadian and interna-  
124 tional origin are referred to as the ‘validation data’. These same data were also reported publicly in Public Service  
125 Announcements from the Newfoundland and Labrador Department of Health and Community Services.

## 126 2.3 Modelling overview

127 Changes in travel volume, and the percentage of travelers arriving from different origins, was determined by ana-  
128 lyzing the total travel volume as described in Section 2.2.1. Two main approaches to modelling importations are  
129 mechanistic models and statistical models.

### 130 2.3.1 A mechanistic epidemiological model

131 The mechanistic model that we consider incorporates all the epidemiological details and data described in Sections  
132 2.2.1-2.2.3 by considering how the processes occur, and is referred to as the ‘epidemiological model’ (summarized in  
133 Fig. 1). The epidemiological model predicts the number of travelers testing positive for SARS-CoV-2 after arrival in  
134 NL whose travel originated in Canada (SI Appendix 1, equation D22) and internationally (SI Appendix 1, equation  
135 D21; see SI Appendix 1 for the derivation of the epidemiological model). The predictions of the epidemiological  
136 model are validated against the data describing daily travel-related cases of Canadian and international origin  
137 (Section 2.2.4).



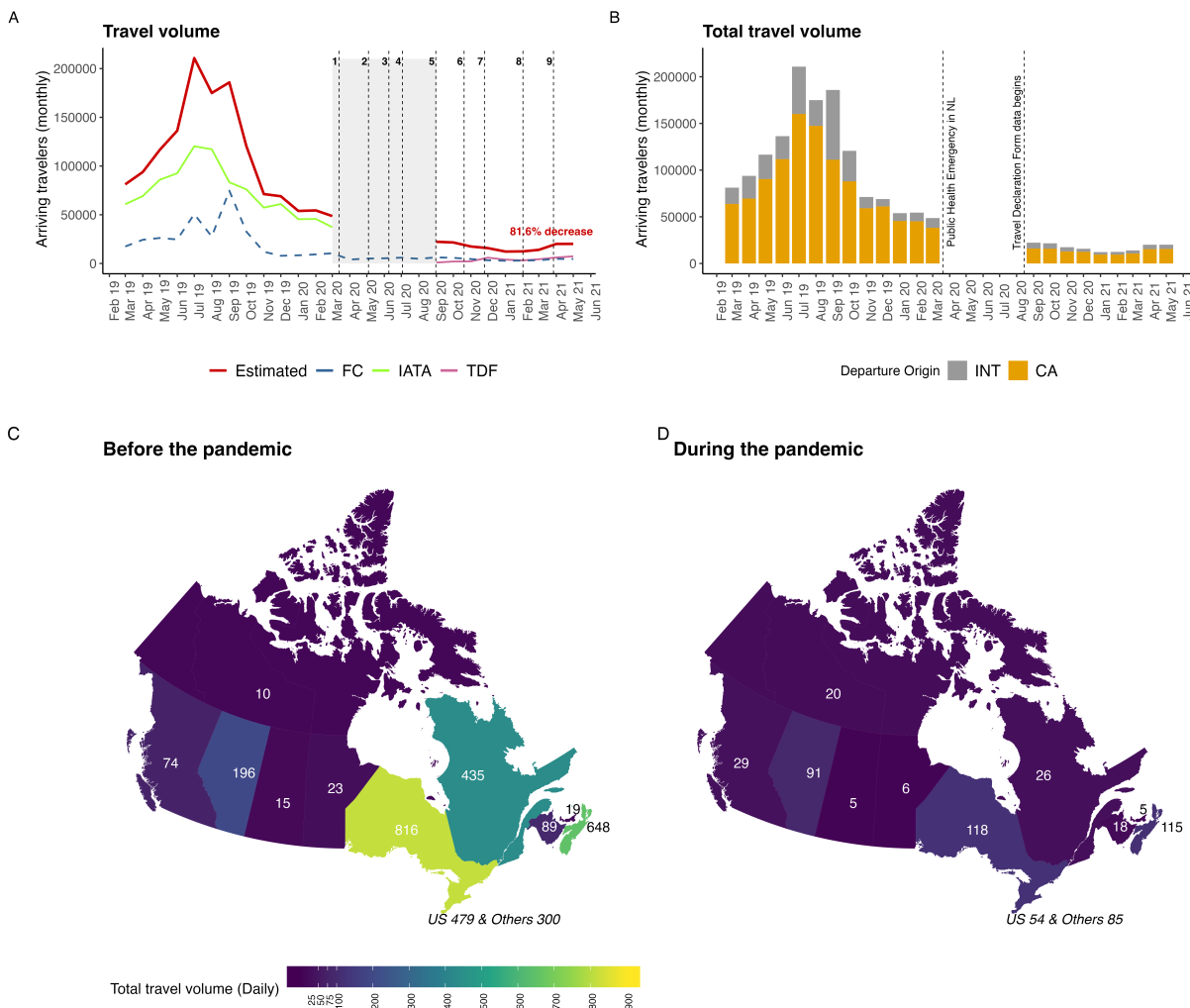
**Fig. 1** Visual overview of the epidemiological model. Travel occurs at  $t_t = 0$ . The number of days between the date of travel and the date of required testing is  $d = \{j_1, j_2, j_3, \bar{a} + t_r, t_r\}$  days after arrival. A pre-arrival test was required for travelers departing from international origins from January 7, 2021. It is assumed that infected travelers were exposed between 0 and 13 days before departure. Probability mass functions describe the timing of first symptoms, and the probability of a true positive Polymerase Chain Reaction (PCR) test as these quantities depend on the number of days since exposure.

### 138 2.3.2 Statistical models

139 The epidemiological model contains many details and precise formulations of relationships, where these details  
 140 may not all be necessary. We formulated nine statistical models that consider relatively few variables and a simple  
 141 model structure. The statistical models are general linear models where the response variable is either the daily  
 142 travel-related cases reported in NL from Canada (Table 2, Models 1-6) or from international origins (Table 2,  
 143 Models 1-3). The models we considered have explanatory variables that are daily total travel volume from an origin  
 144 (Section 2.2.1), daily infection prevalence at origin (Section 2.2.2), or the product of daily infection prevalence and  
 145 travel volume for a given origin. For models to predict daily travel-related cases of Canadian origin, we considered  
 146 stratification of all model variables for each Canadian province and the territories, and aggregation of variables for  
 147 all of Canada (Table 2, Canada: Models 4-6). We used corrected Akaike Information Criteria (AICc) to determine  
 148 which of the epidemiological model or any of the statistical models best predicted the validation data without  
 149 over-fitting.

## 150 3 Results

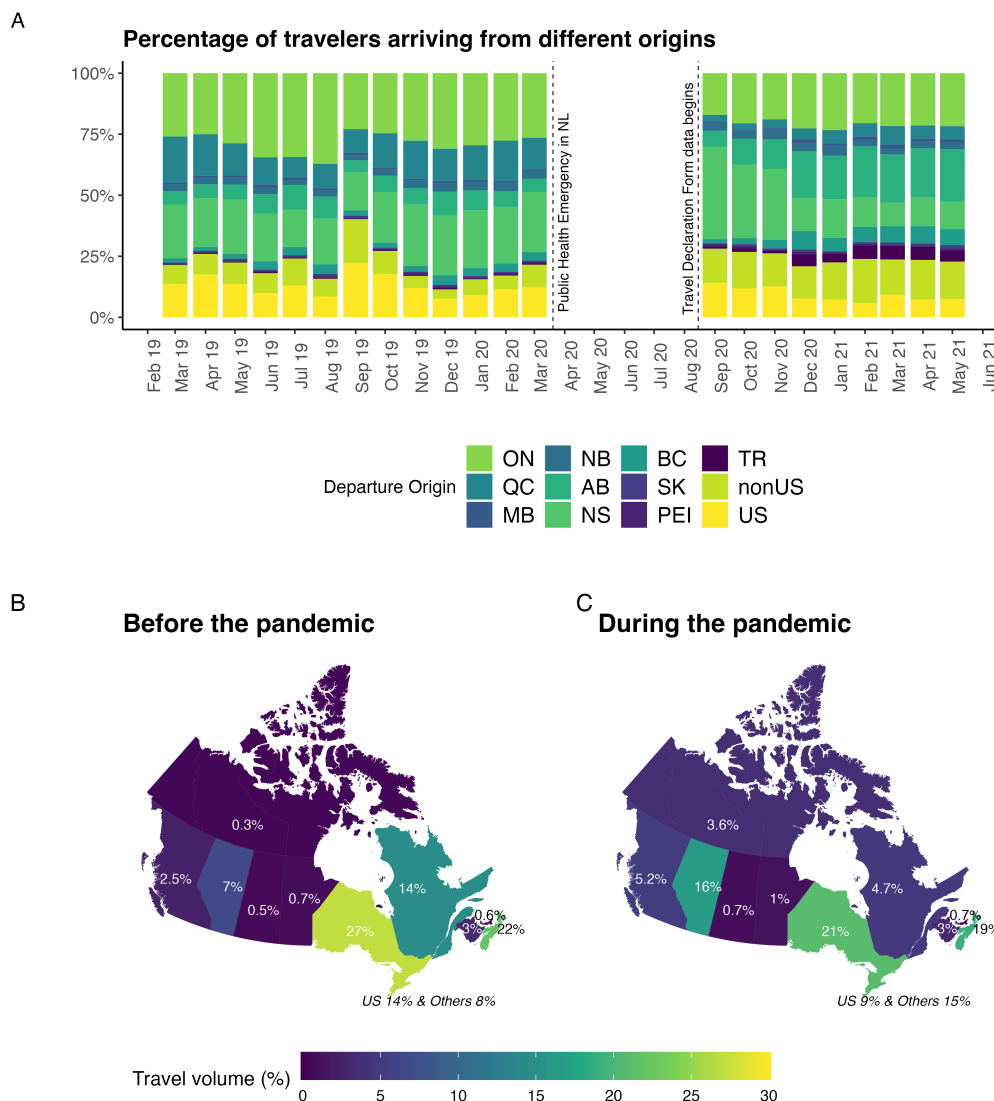
151 We found that the total travel volume arriving in NL declined by 82% during the pandemic while travel measures  
 152 were enacted (September 2020 to May 2021) compared to the same period a year prior (Fig. 2A; red line). During  
 153 the pandemic, the percentage of travelers arriving in NL from different origins also changed (Fig. 3). Relative to  
 154 the same 9 months one year prior to the pandemic, the average percentage of travelers arriving in NL increased  
 155 from British Columbia (2.5 to 5.5%), Alberta (7 to 17%), the Canadian territories (0.3 to 3.3%), and international  
 156 origins not the United States (8 to 15%; Fig. 3). The average percentage of travelers arriving in NL during the  
 157 pandemic decreased from Ontario (27 to 21%), Québec (14 to 4%), and the United States (14 to 8%; Fig. 3).



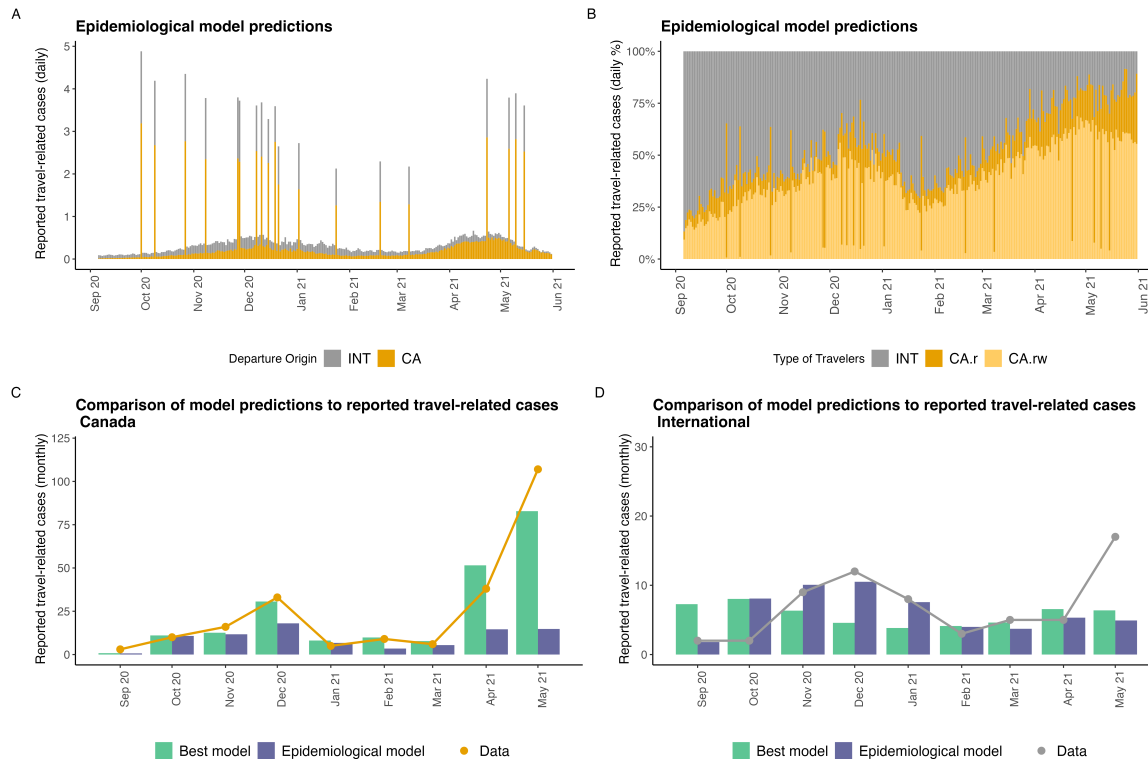
**Fig. 2** A) The total travel volume arriving in Newfoundland and Labrador before and during the pandemic (red line,  $V_{CA} + V_{INT}$ , SI Appendix 1, equation A1), and travel volumes reported by individual data sources: International Air Transport Authority (IATA, green line); Travel Declaration Forms (TDF; purple line); and Frontier Counts (FC; blue line). The numbered vertical lines correspond to travel measures implemented in NL (see SI Appendix 1, Table A1). B) Total travel volume arriving from Canadian and international origins (SI Appendix 1, equation A1). C) and D) The average number of travelers arriving daily before and during the pandemic and their region of origin, where these averages are taken over 9 months.

158 We found that travel-related cases arriving in NL from Canada were best predicted by a statistical model with  
 159 explanatory variables that were daily travel volume multiplied by daily infection prevalence where both variables  
 160 are stratified for each of the provinces of Canada and the Canadian territories (Table 2,  $R^2 = 0.551$  and Fig. 4).  
 161 Our epidemiological model was the lowest ranked model (Table 2,  $\Delta AICc = 137$ ,  $R^2 = 0.155$ ) for travel-related  
 162 cases originating in Canada. The poor performance of the epidemiological model for predicting travel-related  
 163 cases originating in Canada is due to substantial under-estimation of the number of reported travel-related cases in April  
 164 and May 2021 (Fig. 4C).

165 All of the models we considered were inadequate to predict travel-related cases arriving in NL from international  
 166 origins (Table 2,  $R^2 < 0.06$ ). This is likely because few travel-related cases of international origin were reported (less  
 167 than 20 per month, Fig. 4D, grey line), and because we assumed that the infection prevalence in all non-Canadian  
 168 countries was equal to that of the United States of America owing to inconsistent reporting of infections between  
 169 countries.



**Fig. 3** Effect of the pandemic on the percentage of travelers arriving in NL from different origins. A) The percentage of travel volume each month from each of the 9 non-NL Canadian provinces, the Canadian territories (TR is all three territories combined), the United States, and non-United States international origins. B) The average percentage of arrivals from particular origins for 9 months during the pandemic (September 2019 to March 2020, and April to May 2019) and C) this same average for the same 9 months during the pandemic (September 2020 to May 2021).



**Fig. 4** A) Prediction by the epidemiological model of daily reported travel-related cases for travelers arriving from Canadian (CA) and international (INT) origins. The ‘spikes’ coincide with the exposure notifications (see Supplementary Information, Table C8) that required travelers on particular flights to be tested. B) Prediction by the epidemiological model of the daily percentage of travel-related cases that is of Canadian origin, both regular travelers (CA.r, dark yellow) and rotational workers (CA.rw, light yellow), and from international origins (grey). Predicted reported travel-related cases arriving in NL (monthly) for the epidemiological model (blue bars) and the best model (green bars; see Table 2) for travelers originating from (C) Canadian and (D) international origins. In both, C and D monthly travel-related cases reported in NL are shown with lines. The results are shown in panels C) and D) but as predicted daily travel-related cases are shown in SI Appendix 1, Fig. E2.

**Table 2** Model selection for predicted daily travel-related cases reported in NL from Canadian and international origins. Models where variables are stratified for Canadian provinces and the territories are denoted with ‘Provinces’ in parenthesis. Models where variables are aggregated for the Canadian provinces and the territories are denoted with ‘Canada’ in parenthesis.

	Canada	<i>K</i>	AICc	$\Delta$ AICc	LL	<i>R</i> <sup>2</sup>
1	Travel volume × Infection prevalence (Provinces)	11	889.1	0.00	-433.0	0.551
2	Infection prevalence (Provinces)	11	921.2	32.09	-449.1	0.495
3	Travel volume (Provinces)	11	946.4	57.3	-461.7	0.446
4	Travel volume × Infection prevalence (Canada)	2	990.4	101.4	-493.2	0.302
5	Travel volume (Canada)	2	1005.4	116.4	-500.7	0.262
6	Infection prevalence (Canada)	2	1008.0	118.9	-502.0	0.256
7	Epidemiological model (Provinces)	1	1026.0	136.9	-512.0	0.156
International						
1	Travel volume	2	676.6	0.00	-336.3	0.056
2	Infection prevalence	2	677.9	1.28	-336.9	0.052
3	Travel volume × Infection prevalence	2	679.1	2.52	-337.6	0.048
4	Epidemiological model	1	683.5	6.8	-340.7	0.003



## 170 4 Discussion

171 In July 2021, the World Health Organization (WHO) updated guidelines for international travel ([World Health  
172 Organization, 2021](#)) to advise that local epidemiology, and public health and health system performance and  
173 capacity, should be considered to determine if travel measures are appropriate during a pandemic. Data, analysis,  
174 and models are needed to support these updated guidelines. We analyzed data from the Canadian province of  
175 Newfoundland and Labrador (NL) to estimate the impact of travel measures. We investigated the accuracy of  
176 models with different levels of detail to predict daily travel-related cases reported in NL. Our results are evidence  
177 that will inform future risk assessment frameworks to support decisions of whether travel measures should be  
178 implemented during public health emergencies. Analysis of regional data, and regionally-specific models, are needed  
179 because decisions of whether travel measures are appropriate depend on regional characteristics.

180 We estimated that travel measures (described in SI Appendix 1, Section [A.2](#)), reduced the total travel volume  
181 arriving in NL by 82% (September 2020 - May 2021) compared to the same 9 months prior to the pandemic (Figure  
182 [2A](#), red line). This finding is similar to an estimated 79% reduction in non-resident visitor volume to NL for 2020  
183 compared to 2019 ([Government of Newfoundland and Labrador, 2020](#)). In other countries, air travel is estimated  
184 to have declined, on average, 63% for May 2020 (during the pandemic) as compared to May 2019 (before the  
185 pandemic; [Russell et al 2021](#)). The more substantial reduction in travel to NL may have been due to stricter travel  
186 measures for entry to NL than for other countries and regions during the study period. Most notably, non-NL  
187 residents entering NL from other regions of Canada were required to complete Travel Declaration Forms (TDFs)  
188 and have a self-isolation plan to submit to a government representative at entry. These results help quantify the  
189 impact of travel measures implemented during a pandemic because modelling that predicts clinical cases depend  
190 on assumptions describing how travel measures affect travel volume ([Hurford et al, 2021](#)).

191 We found that during the pandemic there was a 10% increase in arrivals from Alberta, and a 10% decrease in  
192 arrivals from Québec (Fig. [3](#)) to NL. Evidence for this result can be seen in Table [A4](#) (see SI Appendix 1), where  
193 the percentages before the pandemic (January 2019 - March 2020) are calculated from the International Air Transit  
194 Authority (IATA) data, and the percentages during the pandemic (September 2020 - May 2021) are calculated  
195 from the TDF data. This shift in the percentage of travelers arriving from different provinces may be explained by  
196 the high percentage of NL's rotational workers that work in Alberta (57%) as compared to Québec (2%; Table [A4](#)  
197 in SI Appendix 1), while the travel volume of regular travelers from Québec before the pandemic is relatively high  
198 (11-26%, third highest behind Ontario and Nova Scotia, Table [A4](#) in SI Appendix 1). Rotational workers likely  
199 continued working during the pandemic, while regular travelers may have delayed or canceled trips. Importation  
200 models used during public health emergencies often consider the product of infection prevalence at the travelers'  
201 origin multiplied by the travel volume from that origin (i.e., [World Health Organization 2020c](#) and equation 1  
202 in [Nakamura and Managi 2020](#)). An implication of our findings is that the travel volume data used for these  
203 calculations needs to correspond to the period of the public health emergency, or should consider the purpose of  
204 the trip, i.e., work or vacation, as travel volumes from different origins can be reduced by different amounts due to  
205 travel measures.

206 Our results provide insights into how to formulate importation models. While one approach to importation modelling  
207 has been to include many epidemiological details, the predictions of these models ([Hincapie et al, 2022](#); [Linka et al,  
208 2020](#); [Nakamura and Managi, 2020](#); [Russell et al, 2021](#)) have not been tested against data describing the number  
209 of travel-related cases reported in a region. When validated, our epidemiological model explained only 15.6% of  
210 the variance in daily travel-related cases arriving in NL from Canada, which is quite low. We found that a very  
211 substantial amount of predictive value is added (up to  $R^2 = 0.551$ ) when the data reporting travel-related cases is  
212 considered in the modelling (Table [2](#)).

213 If travel measures are to be considered during a public health emergency, then a main finding of our analysis is that  
214 travelers should be tested for SARS-CoV-2, and daily travel-related cases need to be reported to support importation  
215 modelling. Early in the COVID-19 pandemic, WHO situation reports described transmission classifications as  
216 imported cases only, sporadic cases, clusters of cases, local transmission, and community transmission where this  
217 information was self-reported by the State Parties ([World Health Organization, 2020a,b](#)). Testing of travelers at  
218 points of entry is a core surveillance method to support early warning for change in epidemiological patterns  
219 ([World Health Organization, 2022](#)), and information on whether individuals testing positive for SARS-CoV-2 have

220 a history of travel is frequently collected (i.e., [Dunajcik et al. 2023](#)). However, it is well-established that travel-  
221 related cases make negligible contributions to epidemic spread when community outbreaks are ongoing (see, e.g.  
222 [Arino et al 2021](#)), and investigating the travel history of reported cases in such situations may be time-consuming  
223 and infeasible. Therefore, it is not necessary for all regions to report the number of cases with a travel history all  
224 the time ([Martignoni et al, 2023](#)).

225 A further finding of our analysis is that it is necessary to consider travel volume and infection prevalence data that is  
226 stratified by province as when these data are considered, an additional 25% of variance in daily travel-related cases  
227 arriving in NL from Canadian origins is explained (Table 2, Model 1 vs. Model 4). None of our models predicted  
228 the daily number of travel-related cases from international origins adequately ( $R^2 < 0.06$  for all models in Table  
229 2), but under-reporting varies substantially between countries and serology data to estimate under-reporting was  
230 unavailable for most countries. Our best model predicting daily travel-related cases from Canada performed very  
231 well, with infection prevalence in non-NL provinces and the territories being an important variable (i.e., Model 2  
232 in Table 2,  $R^2 = 0.495$ ). This suggests that if infection prevalence data were more standardized, then it is likely  
233 that the performance of importation models would improve substantially.

234 There are number of reasons why the predictions of importation models may not hold and should be validated. Data  
235 quality may not be sufficient to make accurate predictions. Many studies consider only air travel volumes ([Chinazzi  
236 et al, 2020](#); [Hincapie et al, 2022](#); [Nakamura and Managi, 2020](#); [Russell et al, 2021](#); [Wells et al, 2020](#)), although  
237 travelers are likely to arrive via other travel modes and this proportion may change seasonally. No one travel volume  
238 data source reports the epidemiologically-relevant travel volume. Travel documents completed at international  
239 borders omit travelers that originate from within the country, and not all travel between countries requires such  
240 documents to be completed (i.e., travel between countries in the European Union). Provinces may conduct surveys  
241 to understand tourist preferences, but such surveys (i.e., [Government of Newfoundland and Labrador 2020-2021](#))  
242 usually focus only on non-resident travel, while returning residents and workers are a potential source of imported  
243 infection. We combined four data sources (see SI Appendix 1, Section A) to overcome limitations of each and to  
244 estimate total travel volume; however, this was very time-consuming, and to model importations urgently during  
245 a public health emergency, it is necessary that total travel volume data is available in real time.

246 It may be difficult to accurately and consistently estimate infection prevalence reported for different regions due to  
247 differences in accessibility of testing, available resources for testing, willingness of different populations to get tested,  
248 and lack of seroprevalence data. Both travel volume and infection prevalence data may be only available for large  
249 spatial scales, which may be insufficient as it has been shown that infection prevalence can vary on the neighborhood  
250 scale ([Xia et al, 2022](#)), and aggregation at large spatial scales may impact the predictions of importation models.  
251 Modelling assumes that travelers are drawn randomly from the population at the origin, whereas in practice travelers  
252 may be of a higher income, which is associated with lower infection prevalence ([Wang et al, 2022](#)).

253 Overall, our results highlight the importance of testing travelers and reporting travel-related cases alongside travel-  
254 er characteristics, such as travel origin and reason for travel. Estimating model parameters from data describing  
255 travel-related cases improves model predictions much more substantially than formulating models with more epi-  
256 demiological realism. Importation models require real time travel volume data and quality data describing infection  
257 prevalence at travelers' origins, and both need to be reported at small spatial scales. Such improvements in  
258 data quality and availability are needed for importation models to support decision-making during public health  
259 emergencies.

260 **Acknowledgments.** We thank one anonymous reviewer for comments that greatly improved the manuscript. All  
261 authors were supported by funding from Mathematics for Public Health (560523-2020), the One Health Modelling  
262 Network for Emerging Infections (560520-2020), and by the Emerging Infectious Disease Modelling Consortium  
263 funded by the Natural Sciences and Engineering Council of Canada. AH and JA are supported by the Canadian  
264 Network for Modelling Infectious Diseases (560516-2020). We thank the Newfoundland and Labrador Centre for  
265 Health Information (NLCHI) and K. Lester for support in accessing the data.

## 266 Declarations

- 267 • **Funding.** All authors were supported by funding from Mathematics for Public Health (560523-2020), the One  
268 Health Modelling Network for Emerging Infections (560520-2020), and by the Emerging Infectious Disease Mod-  
269 elling Consortium funded by the Natural Sciences and Engineering Council of Canada. AH and JA are supported  
270 by the Canadian Network for Modelling Infectious Diseases (560516-2020).
- 271 • **Competing interests.** AH was a member of the Newfoundland and Labrador Predictive Analytics modelling  
272 team and previously received funding from the Newfoundland and Labrador Centre for Health Information.
- 273 • **Ethics approval.** Newfoundland and Labrador Health Research Ethics Board reference number 2021.013
- 274 • **Availability of data and materials.** The Newfoundland and Labrador Centre for Health Information (NLCHI)  
275 is the data custodian for the Travel Declaration Form data and Newfoundland and Labrador COVID-19 cases.
- 276 • **Code availability.** The code used for analysis is [publicly available](#).
- 277 • **Authors' contributions.** All authors conceptualized the study. ZM cleaned the data, completed the analysis,  
278 and made all the figures. ZM and AH interpreted the results and wrote the manuscript. All authors edited the  
279 manuscript.

## 280 References

- 281 Anderson RM, Heesterbeek H, Klinkenberg D, et al (2020) How will country-based mitigation measures influence  
282 the course of the COVID-19 epidemic? *The Lancet* 395(10228):931–934
- 283 Arino J, Boëlle PY, Milliken E, et al (2021) Risk of COVID-19 variant importation—How useful are travel control  
284 measures? *Infectious Disease Modelling* 6:875–897
- 285 Burns J, Movsisyan A, Stratil JM, et al (2021) International travel-related control measures to contain the COVID-  
286 19 pandemic: a rapid review. *Cochrane Database of Systematic Reviews* (3)
- 287 Chinazzi M, Davis JT, Ajelli M, et al (2020) The effect of travel restrictions on the spread of the 2019 novel  
288 coronavirus (COVID-19) outbreak. *Science* 368(6489):395–400
- 289 Costantino V, Heslop DJ, MacIntyre CR (2020) The effectiveness of full and partial travel bans against COVID-  
290 19 spread in Australia for travellers from China during and after the epidemic peak in China. *Journal of Travel*  
291 *Medicine* 27(5). <https://doi.org/10.1093/jtm/taaa081>
- 292 Dunajcik et al. (2023) Travel history among persons infected with SARS-CoV-2 variants of concern in the  
293 United States, December 2020—February 2021. *PLOS Global Public Health* URL <https://doi.org/10.1186/s12889-020-09282-44>
- 295 Ferretti et al. (2020) Quantifying SARS-CoV-2 transmission suggests epidemic control with digital contact tracing.  
296 *Science* 368:eabb6936. URL [DOI:10.1126/science.abb6936](https://doi.org/10.1126/science.abb6936)
- 297 Godin A, Xia Y, Buckeridge DL, et al (2021) The role of case importation in explaining differences in early SARS-  
298 CoV-2 transmission dynamics in Canada—A mathematical modeling study of surveillance data. *International*  
299 *Journal of Infectious Diseases* 102:254–259
- 300 Government of Newfoundland and Labrador (2020) Department of Tourism, Culture, Arts and Recreation, 2020  
301 Tourism Highlights, URL [https://www.gov.nl.ca/tcar/files/2020\\_Tourism\\_Performance\\_June2021.pdf](https://www.gov.nl.ca/tcar/files/2020_Tourism_Performance_June2021.pdf)
- 302 Government of Newfoundland and Labrador (2020-2021) Department of Tourism, Culture, Arts and Recreation,  
303 URL <https://www.gov.nl.ca/tcar/tourism-division/visitor-and-market-insights/>
- 304 Government of Newfoundland Labrador (2018) Tourism, Culture, Arts and Recreation. 2016 EXIT SUR-  
305 VEY – Result Highlights, URL [https://www.gov.nl.ca/tcar/files/2016\\_Exit\\_Survey\\_Highlights\\_Report\\_FINAL-](https://www.gov.nl.ca/tcar/files/2016_Exit_Survey_Highlights_Report_FINAL_REVISED_June.2018.pdf)  
306 [REVISED\\_June.2018.pdf](https://www.gov.nl.ca/tcar/files/2016_Exit_Survey_Highlights_Report_FINAL_REVISED_June.2018.pdf), [Updated June 2018]

- 307 Grépin KA, Ho TL, Liu Z, et al (2021) Evidence of the effectiveness of travel-related measures during the early  
308 phase of the COVID-19 pandemic: a rapid systematic review. *BMJ Global Health* 6(3):e004537
- 309 Grépin KA, Aston J, Burns J (2023) Effectiveness of international border control measures during the COVID-  
310 19 pandemic: a narrative synthesis of published systematic reviews. *Philos Trans A Math Phys Eng Sci*  
311 81(2257):20230134. URL [doi:10.1098/rsta.2023.0134](https://doi.org/10.1098/rsta.2023.0134)
- 312 Hewitt CM, Haan M, Neis B (2018) Interprovincial employees from Newfoundland and Labrador, 2005-2014.  
313 Memorial University of Newfoundland
- 314 Hincapie R, Munoz DA, Ortega N, et al (2022) Effect of flight connectivity on the introduction and evolution of  
315 the COVID-19 outbreak in Canadian provinces and territories. *Journal of Travel Medicine* 29(8):taac100
- 316 Hossain MP, Junus A, Zhu X, et al (2020) The effects of border control and quarantine measures on the spread of  
317 COVID-19. *Epidemics* 32:100397
- 318 Hurford A, Rahman P, Loredó-Osti JC (2021) Modelling the impact of travel restrictions on COVID-19 cases in  
319 Newfoundland and Labrador. *Royal Society Open Science* 8(6):202266
- 320 Linka K, Rahman P, Goriely A, et al (2020) Is it safe to lift COVID-19 travel bans? The Newfoundland story.  
321 *Computational mechanics* 66:1081–1092
- 322 Martignoni M, Arino J, Hurford A (2023) Is SARS-CoV-2 elimination or mitigation best? Regional and disease  
323 characteristics determine the recommended strategy. *MedRxiv* URL [https://www.medrxiv.org/content/10.1101/  
324 2024.02.01.24302169v1](https://www.medrxiv.org/content/10.1101/2024.02.01.24302169v1)
- 325 McCrone J, Hill V, Bajaj S, et al (2022) Context-specific emergence and growth of the SARS-CoV-2 Delta variant.  
326 *Nature* 610:154–160
- 327 Menkir TF, Chin T, Hay JA, et al (2021) Estimating internationally imported cases during the early COVID-19  
328 pandemic. *Nature Communications* 12(1):311
- 329 Nakamura H, Managi S (2020) Airport risk of importation and exportation of the COVID-19 pandemic. *Transport*  
330 *Policy* 96:40–47. <https://doi.org/https://doi.org/10.1016/j.tranpol.2020.06.018>
- 331 Piccoli L, Dzankic J, Ruedin D, et al (2022) Restricting Human Movement During the COVID-19 Pandemic:  
332 New Research Avenues in the Study of Mobility, Migration, and Citizenship. *International Migration Review* p  
333 01979183221118907
- 334 Reddy KS, Mithani SS, Wilson L, et al (2021) Canada's response to international travel during COVID-19  
335 pandemic—a media analysis. *BMC Public Health* 21(1):1–8
- 336 Russell TW, Wu JT, Clifford S, et al (2021) Effect of internationally imported cases on internal spread of COVID-19:  
337 a mathematical modelling study. *The Lancet Public Health* 6(1):e12–e20
- 338 Shoichet CE (2020) 93% of people around the world live in countries with coronavirus travel bans, URL [https://  
339 www.cnn.com/travel/article/countries-with-travel-restrictions-coronavirus/index.html](https://www.cnn.com/travel/article/countries-with-travel-restrictions-coronavirus/index.html), [Accessed: April 1, 2020]
- 340 Statistics Canada (2020-2021) Frontier counts, URL [https://www23.statcan.gc.ca/imdb/p2SV.pl?Function=  
341 getSurvey&SDDS=5005](https://www23.statcan.gc.ca/imdb/p2SV.pl?Function=getSurvey&SDDS=5005), [Updated on: March 13, 2023]
- 342 Statistics Canada (2021) Census Profile, 2021 Census of Population, URL [https://www12.statcan.gc.ca/  
343 census-recensement/2021/dp-pd/prof/index.cfm?Lang=E](https://www12.statcan.gc.ca/census-recensement/2021/dp-pd/prof/index.cfm?Lang=E), [Updated on: March 29, 2023]
- 344 Steyn N, Plank MJ, James A, et al (2021) Managing the risk of a COVID-19 outbreak from border arrivals. *Journal*  
345 *of the Royal Society Interface* 18(177):20210063

- 346 Studdert DM, Hall MA, Mello MM (2020) Partitioning the curve—interstate travel restrictions during the Covid-19  
347 pandemic. *New England Journal of Medicine* 383(13):e83
- 348 Wang L, Calzavara A, Baral S, et al (2022) Differential Patterns by Area-Level Social Determinants of Health in  
349 Coronavirus Disease 2019 (COVID-19)–Related Mortality and Non–COVID-19 Mortality: A Population-Based  
350 Study of 11.8 Million People in Ontario, Canada. *Clinical Infectious Diseases* 76(6):1110–1120. <https://doi.org/10.1093/cid/ciac850>
- 352 Wells CR, Sah P, Moghadas SM, et al (2020) Impact of international travel and border control measures on  
353 the global spread of the novel 2019 coronavirus outbreak. *Proceedings of the National Academy of Sciences*  
354 117(13):7504–7509
- 355 World Health Organization (2020a) Coronavirus disease (COVID-19) Situation Report – 157, URL <https://www.who.int/docs/default-source/coronaviruse/situation-reports/20200625-covid-19-sitrep-157.pdf>
- 357 World Health Organization (2020b) Coronavirus disease (COVID-19) Situation Report – 39, URL <https://www.who.int/docs/default-source/coronaviruse/situation-reports/20200228-sitrep-39-covid-19.pdf>
- 359 World Health Organization (2020c) Risk assessment tool to inform mitigation measures for international travel  
360 in the context of COVID-19: annex to: Considerations for implementing a risk-based approach to international  
361 travel in the context of COVID-19, 16 December 2020, URL <https://iris.who.int/handle/10665/337850>
- 362 World Health Organization (2020d) Statement on the second meeting of the International Health Regulations  
363 (2005) Emergency Committee regarding the outbreak of novel coronavirus (2019-nCoV), URL [https://www.who.int/news/item/30-01-2020-statement-on-the-second-meeting-of-the-international-health-regulations-\(2005\)-emergency-committee-regarding-the-outbreak-of-novel-coronavirus-\(2019-ncov\)](https://www.who.int/news/item/30-01-2020-statement-on-the-second-meeting-of-the-international-health-regulations-(2005)-emergency-committee-regarding-the-outbreak-of-novel-coronavirus-(2019-ncov)), [January 30, 2020]
- 366 World Health Organization (2021) Policy considerations for implementing a risk-based approach to international  
367 travel in the context of COVID-19, 2 July 2021. In: Policy considerations for implementing a risk-based approach  
368 to international travel in the context of COVID-19, 2 July 2021. URL <https://www.who.int/publications/i/item/WHO-2019-nCoV-Policy-Brief-Risk-based-international-travel-2021.1>
- 370 World Health Organization (2022) Public Health Surveillance for COVID-19. Interim Guidance. July 22., URL  
371 <https://iris.who.int/bitstream/handle/10665/360580/WHO-2019-nCoV-SurveillanceGuidance-2022.2-eng.pdf>
- 372 Xia Y, Ma H, Moloney G, et al (2022) Geographic concentration of SARS-CoV-2 cases by social determinants of  
373 health in metropolitan areas in Canada: a cross-sectional study. *CMAJ* 194(6):E195–E204. <https://doi.org/10.1503/cmaj.211249>
- 375 Yang B, Tsang TK, Wong JY, et al (2021) The differential importation risks of COVID-19 from inbound travellers  
376 and the feasibility of targeted travel controls: A case study in Hong Kong. *Lancet Regional Health - Western*  
377 *Pacific* 13:100184

## 378 Appendix A Travel volume

### 379 A.1 Pre-pandemic

380 International Air Transport Association (IATA) data reported the number of passengers traveling in all classes  
381 for flights to and from Newfoundland and Labrador from January 2019 through March 2020 ([International Air  
382 Transport Association, 2020](#)). We focus on the origin and destination that were reported for each trip (not layovers).  
383 We classify the data into three categories: inbound, outbound, and within province. In this work, we use inbound  
384 air travel volume.

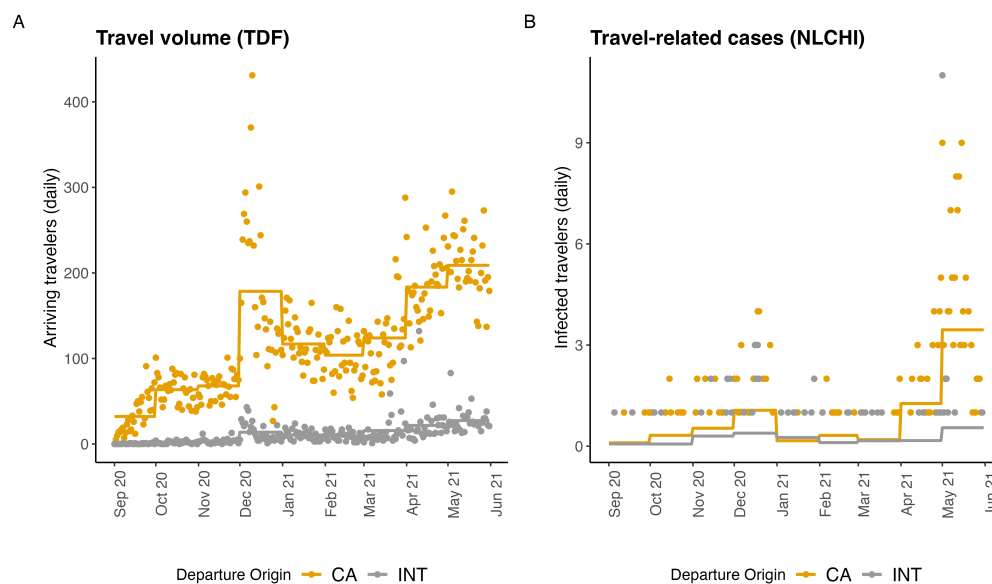
### 385 A.2 During the pandemic

386 In response to the COVID-19 pandemic in Newfoundland and Labrador, several travel measures were implemented  
387 at the federal or provincial levels. At the federal level, on March 16, 2020, entry into Canada by air was allowed only  
388 to Canadians and permanent residents of Canada, and citizens of the United States of America. Air crews, travelers  
389 arriving in Canada in transit to a third country, diplomats, or immediate family members of Canadian citizens were  
390 also exempt ([Trudeau, 2020](#)). At the provincial level, on March 20, 2020, 14-day self-isolation was ordered for all  
391 individuals entering Newfoundland and Labrador from outside the province ([Exemption Order, 2020](#)). This order  
392 included some exemptions, e.g. workers in transportation, essential workers, and rotational workers ([Exemption  
393 Order 2, 2020](#)). Further provincial travel measures were implemented on April 23, 2020 ([Amendment No. 6, 2020](#)).  
394 These measures required that all individuals arriving in Newfoundland and Labrador from outside the province must  
395 complete a Travel Declaration Form (TDF) and have a self-isolation plan to submit to a government representative  
396 upon entry. Also, all individuals arriving in the Labrador part of the province by motor vehicle from the province  
397 of Québec must immediately stop at their point of entry indicated by a representative of the Government of  
398 Newfoundland and Labrador, to submit their declaration form and their self-isolation plan ([Amendment No. 8,  
399 2020](#)).

400 Effective May 4, 2020, all individuals were prohibited from entering Newfoundland and Labrador except residents of  
401 Newfoundland and Labrador, asymptomatic workers, and individuals who received a travel exemption ([Amendment  
402 No.11, 2020; Travel Exemption Order, 2020](#)). There were limited numbers of exempted individuals who were not  
403 required to complete the TDF and submit the self-isolation plan. These were travelers who stayed in the province  
404 less than 24 hours, arrived daily or several times a day via the Labrador-Québec border, entered the province via the  
405 Labrador-Québec border for school reasons, or arrived weekly or several times a week in the province ([Declaration  
406 Exemption Order, 2020; Self-Isolation Exemption Order, 2020](#)). Submitting a TDF at the Labrador-Québec border  
407 relaxed further on June 25, 2020, especially for the residents of Labrador City, Wabush, Fermont, the Labrador  
408 Straits area, Blanc Sablon, and greater Québec Lower North Shore area ([Labrador-Quebec Border Amendments,  
409 2020](#)). Completing a TDF was required even when the Atlantic Bubble was enacted ([Atlantic Travel Amendments,  
410 2020](#)). All these travel orders were in place until the first phase of reopening. Effective on July 1, 2021, an approved  
411 reason to travel to the province, and completion of a TDF, was no longer required ([Re-Opening - Travel, 2021](#)). We  
412 use the TDF information compiled by the Newfoundland and Labrador Centre for Health Information to estimate  
413 arrival volume in the province during the pandemic.

**Table A1** Federal and provincial travel measures in Newfoundland and Labrador from September 2020 to May 2021 (Canadian Institute for Health Information, 2022). ‘Line’ corresponds to the numbering in Fig. 2A of the main text.

Line	Dates	Measure	Level
1	2020-03-13	Cruise ship season postponed	Fed
	2020-03-14	14-day self-isolation required for individuals returning from international travel	Prov
	2020-03-20	14-day self-isolation required for individuals returning from out-of-province travel	Prov
2	2020-05-04	Travel declaration forms and self-isolation plan for non-NL resident entry to NL	Prov
3	2020-06-09	Travel measures for foreign nationals with immediate family in Canada relaxed	Fed
4	2020-07-03	Travel bubble with P.E.I., N.B. and N.S. announced allowing entrance from these provinces without requirement to self-isolate	Prov
5	2020-08-31	Travel measures eased for non-Atlantic Canada residents who own a second home or cabin in Newfoundland and Labrador	Prov
6	2020-10-20	Travel measures for international students attending institutions with a COVID-19 readiness plan eased	Fed
7	2020-11-25	Travel into the province from the Atlantic bubble restricted to essential travel only	Prov
8	2021-02-01	Announced that all international passenger flights must land either at the Vancouver, Calgary, Toronto or Montréal airports	Fed
9	2021-03-27	Limited passengers on provincial ferries to essential travelers only	Prov



**Fig. A1** A. Travel volume of non-exempt travelers arriving in NL as reported by the TDF. Travel volume is a variable included in several of our models and may affect the number of travel-related cases reported in NL B. Travel-related cases reported in the NLCHI COVID-19 database (September 2020 to May 2021; Canada - yellow; international - grey). Both daily values (dots) and monthly averages (lines) are shown.

### 414 A.3 All time

415 The Frontier Counts (FC) provide counts of entries into Canada by international travelers at Canadian ports of  
 416 entry. Total travel volume includes all international travelers that were categorized as: Canadian residents returning  
 417 to Canada, United States of America residents entering Canada, residents of countries other than the United States  
 418 of America entering Canada and ‘other’ travelers which consist of foreign and resident crew members, diplomats,  
 419 military personnel, immigrants and former residents (Statistics Canada, 2020-2021). For this study, we focus on  
 420 Newfoundland and Labrador ports of entry.

421 Data reported by Frontier Counts are extracted from different data sources provided by the Canada Border Services  
 422 Agency (CBSA), i.e., Primary Inspection Kiosks (electronic systems at major airports), E311 Declaration Cards

(forms completed at Canadian international airports without electronic system), and Telephone Reporting Centre-CANPASS (an electronic system for private plane or private boat or who report a land crossing by phone) (Statistics Canada, 2020-2021).

## A.4 Estimating travel volumes not reported in the data sources

### A.4.1 Non-air travel volume from Canadian origins

Reports from the Newfoundland and Labrador Department of Tourism, Culture, Arts and Recreation (TCAR) from 2011 to 2018 indicate that air travel is the main mode of arrival for visitors to NL regardless of the season. The mean percentage of non-NL resident visitors arriving by air, auto, and cruise ships was 76%, 18%, and 6% respectively over three years 2016 to 2018 (Government of Newfoundland Labrador, 2017, 2018a).

From May to October 2016, 73% of non-NL residents arriving from Canadian origins to Newfoundland and Labrador were by air (Government of Newfoundland Labrador, 2016); for arrivals from international origins this value was 85% (Government of Newfoundland Labrador, 2018), and with the remaining non-NL resident arrivals occurring by auto/ferry. Regardless of origin, the fraction of non-NL resident visitors who are using auto/ferry in spring (27%) was more than in fall (19%; Government of Newfoundland Labrador 2017).

Using all the TCAR reports from the Government of Newfoundland and Labrador (2020-2021), we estimated a correction factor,  $\alpha_{CA,1}(t)$  (see Table A2 for notation), to calculate the total travelers (air and auto/ferry) originating from Canada from the air arrival data (IATA,  $s = 1$ ). The estimated value multiplies the travel volume by air from Canadian origins and is 1.24 for September, October, November, and March, 1.14 for winter months (December, January, and February) and 1.37 for warmer months in spring and summer (April to August). For international arrivals, this correction for arrivals by auto/ferry is not necessary owing to the Frontier Counts data ( $s = 3$ ), which reports arrivals by all travel modes.

**Table A2** Parameter values used to estimate the total travel volume arriving in Newfoundland and Labrador from Canadian ( $i = CA$ ) and international ( $i = INT$ ) origins. Data sources are: IATA ( $s = 1$ ); TDF ( $s = 2$ ); and FC ( $s = 3$ ).

Symbol	Description	Value
$Z_{i,s}(t)$	Number of travellers arriving from origin $i$ as reported by data source $s$	See Figure 2A. For the FC data ( $s = 3$ ) we just have $i = INT$ .
$\alpha_{i,s}(t)$	Correction factor to estimate travellers by modes other than air	Values vary for different time periods with complete details in Table A4. $\alpha_{CA,1}(t)$ values are between 0.14 and 0.37, which means that travel volumes increase by 14-37% when the exclusions are considered. $\alpha_{INT,1}(t)$ was determined based on the FC data ( $s = 3$ ) as this data reported arrivals for international origins for all modes.
$\lambda_{i,s}(t)$	For the IATA data ( $s = 1$ ) excluded travellers are domestic crew members. For the TDF data ( $s = 2$ ) exempt travelers are crew, NL residents, and other exempt travellers	Values vary monthly with complete details in Table A4. $\lambda_{CA,1}(t)$ is between 2,107 and 24,952, $\lambda_{CA,2}(t)$ is between 5,863 and 15,048, and $\lambda_{INT,2}(t)$ is between 1,916 and 5,620 travellers excluded each month.
$h_i^{tot}(t)$	Fraction of travellers from each Canadian province and territory	Values vary monthly with complete details in Table A4.
$h_i^{rw}$	Fraction of rotational workers from each Canadian province or territory	Assumed not to vary over time with values reported in Table A4.

### A.4.2 Crew members and exempt travelers

Monthly crew member travel volume from international origins was obtained from the Frontier Counts data source ( $s = 3$ ) both before and during the pandemic. The number of travelers per month that were crew members from Canadian origins is assumed to be 2.5 times the volume of crew members from international origins.

Travel declaration forms data ( $s = 2$ ) reported arriving travel volume each day from Canadian or international origins during the pandemic. TDF data does not consider travelers who were exempt from completing the form



(see Table 1 in the main text, and Section A.2). We were able to estimate the correction for excluded travelers for each month and assumed an equal number of excluded travelers arrived each day during that month.

To estimate the number of exempt travelers from international origins, we compared the two data sources: TDF ( $s = 2$ ) and IATA ( $s = 3$ ). Since  $Z_{INT,3}$  included all international arrivals, the difference between this data source and  $Z_{INT,2}$  is the number of international exempt travelers per month,  $\lambda_{INT,2}(t)$ .

Travelers from Canada exempt from filling out a TDF were interprovincial workers, NL residents, domestic crew members, and exempt travelers via the Labrador-Québec border (see Section A.2). The correction applied to the TDF data source, where  $\lambda_{CA,2}(t)$  accounts for the exclusion of both domestic crew members and other exempt travelers. To estimate the portion of other arriving exempt travelers (not crew), we assumed that the number of total exempt arrivals (residents and non-residents) was 2.4 times the number of exempt non-NL resident arrivals (see Aleman et al 2021 for a justification of this assumption), where the number of exempt non-NL resident arrivals from domestic origins is assumed to equal the number of exempt non-NL residents arriving from international origins per month. This value of 2.4 may be an over-estimate, but this over-estimate compensates for underestimation for other reasons such as challenges in submitting the TDF for travelers arriving by land.

## A.5 Percentage of travelers arriving from different origins

The TDF data (during the pandemic) was used to estimate the monthly percentage of travelers originating from each country (international travel volume) arriving to Newfoundland and Labrador during the pandemic (Table A3). These values show that the United States comprises most arrivals from international origins, implying that our assumption that infection prevalence for international arrivals is equal to infection prevalence in the United States is reasonable.

**Table A3:** Percentage of travel volume from international origins during the COVID-19 pandemic, September 2020 to May 2021

Origins	2020-09	2020-10	2020-11	2020-12	2021-01	2021-02	2021-03	2021-04	2021-05
Argentina	0.000	0.000	0.000	0.000	0.000	0.000	0.000	0.153	0.000
Mauritius	0.000	0.000	0.000	0.000	0.305	0.377	0.000	0.000	0.118
Mexico	0.000	7.692	0.000	2.336	1.829	2.264	0.615	1.227	1.294
Montenegro	0.000	0.000	0.000	0.000	0.000	0.000	0.000	0.153	0.000
Morocco	0.000	0.000	0.000	0.000	0.000	0.000	0.000	0.000	0.235
Moszenbeque	0.000	0.000	0.000	0.000	0.000	0.000	0.205	0.000	0.000
Mozambique	0.000	0.000	0.000	0.000	0.305	0.000	0.000	0.000	0.118
Myanmar	0.000	0.000	0.000	0.000	0.000	0.000	0.000	0.000	0.118
Namibia	0.000	0.000	0.000	0.234	0.000	0.000	0.205	0.000	0.000
Nepal	0.000	0.000	0.000	0.000	0.000	0.755	0.000	0.000	0.235
Netherlands	0.000	0.000	0.990	0.935	0.610	0.000	1.230	1.687	1.176
New Zealand	0.000	1.923	0.000	0.000	0.610	0.000	0.000	0.000	0.000
Nigeria	0.000	1.923	0.000	1.402	1.524	3.019	1.434	1.994	1.529
Norway	0.000	1.923	7.921	2.804	3.659	2.264	1.639	2.301	1.412
Oman	0.000	0.000	0.000	0.467	0.000	0.000	0.000	0.153	0.118
Pakistan	0.000	0.000	0.000	0.467	0.610	1.509	1.434	0.307	0.000
Panama	0.000	0.000	0.990	0.000	0.000	0.000	0.000	0.153	0.000
Papua New Guinea	0.000	1.923	0.000	0.000	0.000	0.755	0.000	0.000	0.000
Australia	0.000	0.000	0.000	0.701	0.305	0.377	0.410	0.767	0.588
Peru	0.000	0.000	0.000	0.000	0.000	0.000	0.000	0.000	0.353
Philippines	0.000	1.923	0.000	4.439	0.915	1.887	1.434	4.755	2.000
Poland	0.000	0.000	0.000	0.234	0.305	0.000	1.639	0.307	2.588
Portugal	0.000	0.000	0.000	0.234	0.915	0.000	0.410	0.614	0.235
Qatar	0.000	0.000	0.000	1.869	0.305	3.019	0.205	1.074	1.412
Romania	0.000	0.000	0.000	0.234	0.305	0.000	0.205	0.153	0.235
Russia	0.000	0.000	0.000	0.234	0.000	0.377	0.410	0.460	0.824
Rwanda	0.000	0.000	0.000	0.000	0.000	0.377	0.205	0.307	0.000
Saudi Arabia	0.000	1.923	0.000	1.402	1.220	1.509	0.205	0.614	0.824
Austria	0.000	0.000	0.000	0.234	0.610	0.000	0.000	0.000	0.118
Scotland	0.000	3.846	0.990	0.935	0.610	1.132	2.254	3.067	0.000
Serbia	0.000	0.000	0.000	0.000	0.000	0.000	0.205	0.153	0.118
Singapore	0.000	0.000	0.000	0.234	0.000	0.755	0.000	0.153	0.471
Sint Maarten	0.000	0.000	0.000	0.000	0.000	0.000	0.000	0.153	0.000
Slovenia	0.000	0.000	0.000	0.000	0.610	0.000	0.000	0.000	0.000
South Africa	0.000	0.000	0.000	0.000	0.000	1.132	1.025	0.460	0.235
South Korea	0.000	0.000	0.000	0.000	0.000	0.377	0.000	0.153	0.000
Azerbaijan	0.000	0.000	0.000	0.234	0.000	0.000	0.410	0.000	0.353
Spain	0.000	3.846	0.990	3.738	3.354	2.642	0.615	1.380	4.235
Srilanka	0.000	0.000	0.990	0.234	0.610	1.509	0.615	0.153	0.471
St Kitts and Nevis	0.000	0.000	0.000	0.000	0.000	0.000	0.000	0.153	0.000
Suriname	0.000	0.000	0.000	0.935	0.305	0.755	1.434	14.877	0.000
Sweden	0.000	1.923	0.000	0.234	0.000	0.000	0.000	0.460	0.235
Switzerland	0.000	0.000	0.000	0.234	0.305	0.000	0.615	0.000	0.235
Taiwan	0.000	1.923	0.000	0.234	0.000	0.377	0.000	0.000	0.235
Tanzania	0.000	0.000	0.000	0.000	0.305	1.132	0.000	0.000	0.353
Thailand	0.000	0.000	0.000	0.000	0.305	0.000	0.000	0.153	8.235
Trinidad and Tobago	0.000	0.000	0.990	0.935	2.439	2.642	1.230	2.147	1.647
Tunisia	0.000	0.000	0.000	0.000	0.000	0.000	0.000	0.000	0.118
Turkey	0.000	0.000	0.000	0.467	1.220	1.132	0.205	0.920	0.000
UAE	0.000	1.923	0.000	0.234	0.915	0.000	0.410	1.227	0.588

Continued on next page

Table A3 – continued from previous page

International Origins	2020-09	2020-10	2020-11	2020-12	2021-01	2021-02	2021-03	2021-04	2021-05
UK	16.667	13.462	16.832	10.047	9.451	7.925	3.074	2.607	11.059
Bangladesh	0.000	0.000	0.000	1.636	2.439	6.038	3.074	1.227	3.529
Ukraine	0.000	0.000	0.000	0.000	0.610	0.000	0.000	0.153	0.353
USA	50.000	44.231	48.515	36.682	32.012	24.151	39.139	30.675	32.706
Uzbekistan	0.000	0.000	0.000	0.000	0.000	0.000	0.000	0.000	0.118
Vietnam	0.000	1.923	0.000	0.000	0.610	0.000	0.000	0.000	0.118
Wales	0.000	0.000	0.000	0.000	0.000	0.000	0.410	0.000	0.000
Zambia	0.000	0.000	0.000	0.000	0.000	0.000	0.000	0.153	0.235
Zimbabwe	0.000	0.000	0.000	0.000	0.305	0.377	0.205	0.307	0.235
Barbados	0.000	0.000	0.990	0.000	0.000	0.377	0.000	0.307	0.118
Belgium	0.000	0.000	0.000	0.000	0.000	0.000	0.205	0.000	0.000
Belize	0.000	0.000	0.000	0.467	0.000	0.000	0.205	0.153	0.118
Benin	0.000	0.000	0.000	0.000	0.305	0.000	0.000	0.000	0.000
Bermuda	0.000	0.000	0.000	0.234	0.000	0.377	0.000	0.000	0.000
Bolivia	0.000	0.000	0.000	0.000	0.000	0.377	0.000	0.000	0.000
Bosnia and Herzegovina	0.000	0.000	0.000	0.000	0.000	0.000	0.000	0.153	0.000
Botswana	0.000	0.000	0.000	0.000	0.000	0.377	0.000	0.000	0.000
Brazil	8.333	0.000	0.990	1.168	2.744	1.509	1.434	1.227	0.588
Brunei	0.000	0.000	0.000	0.234	0.000	0.377	0.205	0.000	0.118
Bulgaria	0.000	0.000	0.000	0.000	0.000	0.000	0.410	0.153	0.235
Cameroon	0.000	0.000	0.000	0.000	0.000	0.377	0.410	0.000	0.235
Cape Verde	0.000	0.000	0.000	0.000	0.000	0.000	0.000	0.307	0.000
Caribbean	0.000	0.000	0.000	1.402	0.610	0.377	0.205	0.460	1.294
Chad	0.000	0.000	0.000	0.000	0.305	0.000	0.000	0.000	0.000
Chile	0.000	0.000	0.000	0.000	0.610	0.377	0.000	0.000	0.000
China	8.333	0.000	0.000	0.935	0.610	0.755	0.615	0.920	1.294
Colombia	0.000	0.000	0.000	0.000	0.610	0.000	0.000	0.153	0.118
Congo DRC	0.000	0.000	0.000	0.000	0.000	0.000	0.000	0.000	0.353
Costa Rica	0.000	0.000	0.000	0.234	0.305	0.000	0.000	0.000	0.235
Croatia	0.000	0.000	0.000	0.000	0.000	0.000	0.000	1.227	0.353
Africa	0.000	0.000	0.000	0.234	0.305	0.755	0.205	0.153	0.000
Cuba	0.000	0.000	0.000	0.234	0.305	0.000	0.000	0.000	0.000
Czech Republic	0.000	0.000	0.000	0.000	0.000	0.000	0.000	0.000	0.118
Denmark	0.000	0.000	0.990	0.467	0.610	1.509	0.410	0.307	1.059
Dominican Republic	0.000	0.000	0.000	0.467	0.305	0.000	0.000	0.000	0.235
Ecuador	0.000	0.000	0.000	0.000	0.000	0.000	0.205	0.000	0.235
Egypt	8.333	0.000	1.980	0.234	1.220	0.755	0.615	0.920	0.824
El Salvador	0.000	0.000	0.000	0.234	0.000	0.000	0.000	0.000	0.000
Albania	0.000	0.000	0.990	0.000	0.000	0.000	0.205	0.000	0.000
Ethiopia	0.000	0.000	0.000	0.000	0.000	0.000	0.000	0.614	0.000
Faroe Islands	0.000	0.000	0.000	0.000	0.000	0.377	0.205	0.000	0.471
Finland	0.000	0.000	0.000	0.234	0.000	0.377	0.205	0.000	0.118
France	0.000	1.923	1.980	1.402	2.744	0.755	13.320	1.227	0.588
Gabon	0.000	0.000	0.000	0.000	0.000	0.000	0.205	0.000	0.000
Germany	0.000	0.000	2.970	1.168	0.610	1.132	1.639	1.074	0.471
Ghana	0.000	0.000	0.000	0.234	0.610	2.264	0.410	0.614	0.235
Greece	0.000	0.000	0.990	0.234	0.000	0.000	0.205	0.153	0.118
Guatemala	0.000	0.000	0.000	0.000	0.000	0.000	0.205	0.000	0.118
Guyana	8.333	0.000	0.000	3.037	3.963	1.132	1.844	1.687	1.294
Holland	0.000	0.000	0.000	0.000	0.000	0.000	0.000	0.307	0.000
Honduras	0.000	0.000	0.000	0.000	0.000	0.000	0.000	0.153	0.000
Hong Kong	0.000	0.000	0.000	0.000	0.000	0.000	0.000	0.153	0.118
Hungary	0.000	0.000	0.000	0.234	0.000	0.000	0.000	0.153	0.118
Iceland	0.000	0.000	2.970	0.467	0.305	0.755	0.000	0.614	0.118
India	0.000	0.000	0.990	2.804	1.524	4.906	3.484	3.221	0.471
Indonesia	0.000	0.000	0.000	0.467	0.000	0.000	0.000	0.153	0.118
Amsterdam	0.000	0.000	0.000	0.234	0.000	0.000	0.000	0.000	0.000
Iran	0.000	0.000	0.000	0.935	3.963	3.019	0.205	1.074	1.176
Iraq	0.000	0.000	0.000	0.000	0.305	0.000	0.000	0.000	0.000
Ireland	0.000	0.000	1.980	2.103	1.829	1.132	0.820	0.920	1.294
Israel	0.000	0.000	0.000	0.467	0.000	0.000	0.000	0.153	0.000
Italy	0.000	5.769	0.990	0.000	0.305	1.132	0.615	0.000	0.235
Jamaica	0.000	0.000	0.990	0.467	0.305	0.000	1.434	0.614	0.588
Japan	0.000	0.000	0.000	0.000	0.305	0.000	0.000	0.614	0.706
Jordan	0.000	0.000	0.000	0.467	0.610	0.755	0.615	0.000	0.471
Kazakhstan	0.000	0.000	0.000	0.467	0.000	1.132	0.000	0.460	0.118
Kenya	0.000	0.000	0.000	0.467	0.305	0.377	0.410	0.153	0.235
Angola	0.000	0.000	0.990	1.402	0.610	0.755	1.434	0.920	0.353
Kosovo	0.000	0.000	0.000	0.000	0.000	0.377	0.000	0.000	0.000
Kuwait	0.000	0.000	0.000	0.000	1.220	0.000	0.000	0.153	0.235
Kyrgyzstan	0.000	0.000	0.000	0.000	0.000	0.000	0.000	0.000	0.118
Latin America	0.000	0.000	0.000	0.000	0.000	0.000	0.000	0.000	0.235
Latvia	0.000	0.000	0.000	0.701	0.000	0.000	0.205	0.000	0.000
Lebanon	0.000	0.000	0.000	0.000	0.305	0.000	0.205	0.153	0.118
Libya	0.000	0.000	0.000	0.000	0.000	0.000	0.000	0.000	0.118
Lithuania	0.000	0.000	0.000	0.000	0.000	0.000	0.000	0.000	0.118
Antigua & Barbuda	0.000	0.000	0.000	0.000	0.305	0.000	0.000	0.000	0.000
Luxembourg	0.000	0.000	0.000	0.000	0.000	0.000	0.000	0.000	0.118
Malaga	0.000	0.000	0.000	0.000	0.000	0.000	0.000	0.153	0.000
Malawi	0.000	0.000	0.000	0.000	0.000	0.000	0.000	0.153	0.000
Malaysia	0.000	0.000	0.000	0.234	0.000	0.755	0.000	0.000	0.471
Martinique	0.000	0.000	0.000	0.000	0.000	0.000	0.205	0.000	0.000
Mauritania	0.000	0.000	0.000	0.000	0.305	0.000	0.000	0.000	0.000

470

471 The percentage of travel volume for each province or the territories from the IATA (before the pandemic) and TDF  
 472 (during the pandemic) data was used to estimate the percentage of regular travelers arriving from each of these  
 473 origins (Table A4).

474 The percentage of NL residents that are interprovincial employees working in each Canadian province or the  
 475 territories is reported by [Hewitt et al 2018](#). In this report, the largest number of NL residents that are interprovincial

**Table A4** Values for the parameters in table A2.  $h_i^{tot}(t)$  (per month) is the fraction of Canadian travel volume that originates from each individual province or the territories.  $\alpha_{CA,1}(t)$  is the correction factor to estimate the number of travellers arriving from Canada by modes other than air before the pandemic.  $\lambda_{CA,1}(t)$  is the number of excluded travellers for data source  $s = 1$  per month (pre-pandemic) whereas  $\lambda_{CA,2}(t)$  and  $\lambda_{INT,2}(t)$  are the monthly number of Canadian and international excluded travelers from data source  $s = 2$  (during the pandemic).  $h_i^{rw}$  is the fraction of rotational workers from each Canadian province and territory.

Date	$h_i^{tot}(\%)$											$\alpha_{CA,1}(t)$	$\lambda_{CA,1}(t)$	$\lambda_{CA,2}(t)$	$\lambda_{INT,2}(t)$
	ON	QC	MB	NB	AB	NS	BC	SK	PEI	TR		CA	CA	CA	INT
2019-01	31.69	24.35	0.58	3.5	8.82	27.15	2.16	0.52	1.03	0.2		0.14	2920		
2019-02	32.05	25.84	0.68	3.79	7.52	26.88	2	0.44	0.61	0.21		0.14	2417		
2019-03	33.07	24.07	0.75	3.73	6.99	27.97	2.29	0.29	0.49	0.35		0.24	3642		
2019-04	33.8	22.96	0.72	3.97	7.72	27.03	2.09	0.6	0.75	0.36		0.37	3150		
2019-05	37.07	17.07	1.07	3.7	7.88	28.66	2.64	0.87	0.69	0.34		0.37	4750		
2019-06	42.03	13.73	1.49	3.23	9.74	23.91	4.1	0.58	0.68	0.53		0.37	5702		
2019-07	45.19	11.03	1.37	2.7	13.31	20.21	4.3	0.94	0.54	0.41		0.37	14075		
2019-08	44.14	11.81	1.17	2.83	10.7	22.29	4.67	1.22	0.73	0.45		0.37	6650		
2019-09	38.38	16.25	1.5	3.55	8.26	26.09	3.76	0.92	0.93	0.36		0.24	24952		
2019-10	33.86	19.34	1.1	3.33	9.14	28.6	2.9	0.47	0.73	0.52		0.24	9395		
2019-11	33.32	18.8	0.55	3.99	8.1	30.33	2.84	0.52	1.1	0.44		0.24	2842		
2019-12	34.95	14.93	0.9	4.05	10.99	27.68	4.4	0.59	0.8	0.7		0.14	2445		
2020-01	35.01	16.69	0.78	4.39	9.57	28.1	3.87	0.62	0.7	0.27		0.14	2107		
2020-02	33.33	19.82	0.78	4.44	7.73	28.01	4.03	0.42	0.93	0.52		0.14	2412		
2020-03	33.75	16.37	0.91	3.97	7.17	31.26	4.43	0.62	0.85	0.67		0.24	2252		
2020-09	23.78	3.72	0.72	4.45	9.31	52.64	2.38	0.52	1.24	1.24				15048	5620
2020-10	28.09	3.4	0.66	4.57	14.47	41.14	3.25	1.02	1.52	1.88				13838	4669
2020-11	25.7	4.86	0.69	5.49	16.38	39.38	4.81	0.54	0.74	1.42				10827	3399
2020-12	28.62	5.57	2.26	3.99	24.29	17.04	9.54	1.08	1.41	6.2				6941	2231
2021-01	30.1	7.17	1.16	5.27	22.84	20.55	7.01	0.69	0.61	4.61				5863	1916
2021-02	26.92	7.22	1.93	3.16	27.36	16.16	8.25	1.03	0.79	7.18				6548	2144
2021-03	28.41	10.07	1.9	3.15	25.88	12.75	8.74	1.33	0.68	7.1				6831	2238
2021-04	28.02	7.2	1.47	3.49	26.15	15.59	9.21	1.16	0.71	7				9845	3096
2021-05	28.18	6.98	1.53	3.58	27.92	14.68	8.37	1.67	1.11	5.98				9065	2841
$h_i^{rw}(\%)$	15	2	1	4	57	8	4	2	2	5					

476 employees work in Alberta (57%), followed by Ontario (15%) and Nova Scotia (8%). These values are used to  
 477 estimate the within-Canada origin of rotational workers (Table A4).

## 478 A.6 Estimating total travel volume

We estimated the total travel volume (see Section 2.2.1 of the main text for a definition) arriving in NL by considering three data sources: International Air Travel Association ( $s = 1$ ), Travel Declaration Forms ( $s = 2$ ), and Frontier Counts ( $s = 3$ ) each with limitations, and each reported for different time periods (Table 1). We estimate the total travel volume considering all travel modes, travelers and crew, from the origin  $i$  at time  $t$  by introducing indicator variables that correct for exclusions in the data sources,

$$V_{i,s}(t) = (1 + \alpha_{i,s}(t) \mathbb{1}_{\text{MODES}}) Z_{i,s}(t) + \lambda_{i,s}(t) \mathbb{1}_{\text{EXCL}}, \quad (\text{A1})$$

479 where  $Z_{i,s}(t)$  is the number of travelers arriving from origin  $i$  per day ( $s = 2$ ), or per month ( $s = 1, 3$ ) reported from  
 480 a data source,  $s$ . Possible origins are international ( $i = \text{INT}$ ) or Canada ( $i = \text{CA}$ ), but in subsequent calculations  
 481 below we will further partition  $i = \text{CA}$  into each Canadian province and the territories (where all three Canadian  
 482 territories are combined).

483 The indicator variable  $\mathbb{1}_{\text{MODES}}$  applies to data that does not report arrivals by all modes, and applies to the IATA  
 484 data ( $s = 1$ ) because this travel volume reports only arrivals by air. The correction factor,  $\alpha_{i,s}(t)$ , multiplies the  
 485 reported travel volume by air. The indicator variable  $\mathbb{1}_{\text{EXCL}}$  applies when some individuals are excluded from the  
 486 reported travel volume, and the correction is additive. This correction applies to the IATA data,  $\lambda_{i,1}(t)$ , for crew  
 487 members that are not reported, and to the TDF data,  $\lambda_{i,2}(t)$ , because arriving crew members on flights, ships,  
 488 commercial freighters, NL residents, and other exempt travelers are not reported in this data.

489 The travel volume,  $V_{i,s}(t)$ , corrected for reporting omissions, can be calculated for all data sources  $s$ ; however, in  
 490 practice the calculated values do not have a lot of overlap because the IATA data only corresponds to pre-pandemic  
 491 time periods, the TDF data only corresponds to during the pandemic, and the FC data only reports travelers of  
 492 international origin.

493 In Equation (A1),  $i$  refers to the Canadian or international origin of travel, but both the IATA and TDF data  
 494 report the Canadian province or territory of origin. Therefore, we estimate travel volume from different Canadian  
 495 provinces and the territories as,

$$v_{i,s}(t) = V_{CA,s}(t)h_i^{tot}(t), \quad (\text{A2})$$

496 where  $h_i^{tot}(t)$  is the fraction of all Canadian travelers originating from each of the different non-NL provinces or the  
 497 territories  $i \in \{BC, AB, SK, MB, ON, QC, NB, NS, PE, TR\}$  on a given date  $t$ , where Yukon, Northwest territories,  
 498 and Nunavut are combined and denoted as TR,  $s = 1$  corresponds to the IATA data when we are considering times  
 499 before the pandemic, and  $s = 2$  corresponds to the TDF data when we are considering times during the pandemic.

500 During the public health emergency in NL, different travel restrictions were applied to rotational workers. Rotational  
 501 workers are NL residents who work in other provinces. The number of rotational workers entering NL is difficult  
 502 to estimate, but [Martignoni et al \(2022\)](#) estimates that 6,000 NL residents are rotational workers. If we assume a  
 503 rotational worker has a set schedule of two weeks of work and home (alternating), then approximately 200 rotational  
 504 workers will enter NL each day. The fraction of rotational workers that work in any given province or the Canadian  
 505 territories,  $i \in \{BC, AB, SK, MB, ON, QC, NB, NS, PE, TR\}$ , is  $h_i^{rw}$ , which is estimated from [Hewitt et al \(2018\)](#)  
 506 (see table A4). Therefore, the number of rotational workers arriving in NL during the pandemic from each of the  
 507 different provinces and territories is,

$$v_i^{rw}(t) = 200h_i^{rw}. \quad (\text{A3})$$

508 The number of regular travelers (defined as all individuals that are not rotational workers) arriving from a Canadian  
 509 origin,  $i$ , during the pandemic is,

$$v_i^r(t) = v_{CA,2}(t) - v_i^{rw}, \quad (\text{A4})$$

510 where the travel volume is estimated from the TDF data ( $s = 2$ ) because this data source corresponds to during  
 511 the pandemic. The quantity  $v_i^{rw}(t)$  does not change with time, but  $v_i^r(t)$  does, so the dependence on time is written  
 512 so that the compacted notation  $v_i^k(t)$  can be used. We define

$$v_i^r(t) = v_{INT,2}(t), \quad (\text{A5})$$

513 as the volume of regular travelers arriving from international origins during the pandemic, such that  $v_i^k(t)$  is the  
 514 volume of travelers arriving during the pandemic at time,  $t$ , that are rotational workers ( $k = rw$ ,  $i = CA$ ), regular  
 515 travelers arriving from a Canadian origin ( $k = r$ ,  $i = CA$ ), or from an international origin ( $k = r$ ,  $i = INT$ ).

## 516 Appendix B Estimating the infection status of departing travelers

517 The infection status of departing travelers indicates whether travelers are infected, and if infected, the number of  
 518 days since exposure.

## 519 B.1 Infection prevalence at origin

### 520 B.1.1 Data sources - infection prevalence

521 The data source for new SARS-CoV-2 cases (incidence) was the Public Health Agency of Canada (PHAC) for the  
 522 Canadian provinces ([Public Health Infobase, 2020-2021](#)). We used the daily infection incidence in the United States  
 523 for all international travelers due to the lack of seroprevalence data for other countries. The Center for Systems  
 524 Science and Engineering (CSSE) at Johns Hopkins University was the data source for infection incidence in the  
 525 United States ([Dong et al, 2020](#)).

526 We used the method described in [Martignoni et al \(2023\)](#) to estimate the coefficient of under-reporting for COVID-  
 527 19 in region  $i$ , by considering the cumulative percentage of the population that was seropositive for SARS-CoV-2  
 528 antibodies relative to the number of reported COVID-19 cases in a region,  $i$ . We assumed the under-reporting  
 529 coefficient,  $u_i$ , for a given region did not change over time. The cumulative percentage of the population infected at  
 530 the end of September 2020 and May 2021 is determined from seroprevalence data ([Blood Donation Organizations, 2023](#);  
 531 [Centers for Disease Control and Prevention, 2020-2021](#)) and divided by the cumulative reported cases for each  
 532 region 13 days earlier because there are 9-12 days between symptom onset and seroconversion ([Lou et al, 2020](#)).  
 533 The under-reporting coefficient,  $u_i$ , is calculated as the difference in the percentage of the population infected as  
 534 estimated by the seroprevalence, divided by the difference in the percentage of the population reported as infected  
 535 (Table B5).

**Table B5** Under-reporting of COVID-19 cases.

Region $i$	Population $N_i$	Cumulative reported cases to 2020-09-17	Cumulative reported cases per capita to 2020-09-17	Cumulative reported cases to 2021-05-16	Cumulative reported cases per capita to 2021-05-16	Seropositivity to 2020-09-30	Seropositivity to 2021-05-29	Estimated unreported cases per reported case
BC	5,071,336	7,663	0.151%	139,240	2.746%	0.5%	3.099%	1.002
AB	4,371,316	16,274	0.372%	218,961	5.009%	0.69%	5.27%	0.988
SK	1,174,462	1,757	0.150%	44,531	3.792%	0.14%	4.32%	1.148
MB	1,369,465	1,500	0.110%	45,149	3.297%	1.45%	5.37%	1.230
ON	14,566,547	45,676	0.314%	509,316	3.496%	0.85%	4.1%	1.021
QC	8,484,965	66,356	0.782%	363,296	4.282%	1.23%	4.84%	1.032
NB	776,827	194	0.025%	2,063	0.266%	0.159%	0.172%	0.054
NS	971,395	1,086	0.112%	4,736	0.488%	0.16%	0.23%	0.186
PEI	156,947	57	0.036%	191	0.122%	0.142%	0.24%	1.148
TR	124,460	20	0.016%	829	0.666%	0.12%	0.29%	0.262
USA	332,660,077	6,704,918	2.016%	33,064,172	9.939%	4.9%	20.6%	1.981

### 536 B.1.2 Estimating prevalence from incidence data

537 The travel volume from an origin is combined with the point prevalence at the traveler’s origin in our epidemiological  
 538 model. To estimate point prevalence at the origin, we first estimate the incidence proportion (number of new cases  
 539 divided by the population size) at a traveler’s origin,  $f_i(t)$ , on a day  $t$ , as

$$f_i(t) = \frac{c_i(t + t_d)u_i}{N_i}, \quad (\text{B6})$$

540 where  $c_i(t)$  is the number of new cases reported on day  $t$  at the origin  $i$ ,  $t_d = 11$  days is the delay between exposure  
 541 and reporting (we note that [Hendy et al 2021](#) reports this delay can be over 2 weeks),  $N_i$ , is the population size  
 542 for each origin,  $i \in \{\text{INT, BC, AB, SK, MB, ON, QC, NB, NS, PE, TR}\}$  (based on 2021 values estimated from [Statistics Canada 2021](#) and [The United States government 2021](#)), and  $u_i$  is an origin-specific correction factor to account for  
 543 under-reporting.  
 544

**Table B6** Parameter values.

Symbol	Definition	Value	Reference
$N_i$	Population size for the travel origin, $i$ , in 2021. $i$ is each Canadian province except NL, and the Canadian territories and international origins	Table B5	Statistics Canada (2021); The United States government (2021)
$u_i$	Correction for infection under-reporting at origin $i$	Table B5	App. B
$t_d$	Delay between exposure and reporting at travellers origin	11 days	Assumed
$\lambda(a)$	Probability of first developing symptoms given exposure $a$ days ago	Eq. (B10)	Lauer et al (2020)
$t_{sens}(a)$	Probability of a true positive given exposure $a$ days ago	App. B	Hellewell et al (2021); Hurford et al (2023)
$\psi$	Fraction of travelers who travel despite having symptoms	0.75	Smith et al (2020)
$\rho$	Fraction of infections that are symptomatic	0.69	Godin et al (2021)
$t_t$	Date of arrival in NL	All dates	
$P^S$	Probability that symptomatic regular travellers get tested in NL	0.8	Assumed
$P_i^A$	Proportion of all travelers that were infected on a flight, and were tested after exposure notifications were issued (Tab. C8)	0.01	App. B
$\bar{a}$	Average number of days after arrival when symptoms first occur	1 day	See Eq. (C18). The exact value is 1.49 days
$t_e$	Number of days after arrival when an exposure notifications was issued	3 days	Assumed. Ranged between 2 and 7 days
$t_r$	Delay between requesting a post-arrival test and the test occurring (for travellers without scheduled tests)	3 days	Assumed
$t_{rep}$	Delay between testing and reporting in NL	1 day	Assumed

545 We convert from incidence proportion to prevalence proportion (the proportion of the population that have infec-  
 546 tions at time  $t$ ) because we assume that the probability a traveler has an active infection at departure is equal to  
 547 infection prevalence proportion at their origin. We assume that individuals have active infections for 14 days, and  
 548 approximate point prevalence as  $14f_i(t)$ . This calculation is not exact. Indeed, suppose prevalence is increasing  
 549 until time  $t$ . Then at time  $t$ , more new infections than recoveries are occurring, so that point prevalence is actually  
 550 more than  $14f_i(t)$ ; the situation is reversed for for decreasing incidence.

### 551 B.1.3 Infection status of departing travelers

552 In addition to the probability that a traveler is infected, we also need to know the probability that the traveler was  
 553 exposed  $a$  days ago. We assume that the distribution of days since exposure of infected travelers at departure is  
 554 uniformly distributed between 13 and 0 days ago, i.e.,

$$n_i(t, a) = \begin{cases} 14 \frac{f_i(t)}{14} = f_i(t) & \text{for } a = 0, 1, 2, \dots, 13 \\ 0 & \text{otherwise,} \end{cases} \quad (\text{B7})$$

555 where  $a$  is the number of days since exposure or the ‘age of infection’. Again, this is an approximation because  
 556 if incidence is increasing at time  $t$ , there will be more individuals with recent exposures, so that the distribution  
 557 of age of infection is right-skewed (i.e., the tail is to the right as there relatively fewer individuals exposed many  
 558 days ago). An approximation is used because estimating the distribution of the ages of infection at any time from  
 559 reported data is difficult. Indeed, whether a case is reported depends on the age of the infection: tests are requested  
 560 once symptoms develop, test results can be false negatives, and both of these processes depend on the age of  
 561 infection. Due to the development of symptoms and pre-arrival testing, not all infected travelers end up traveling.  
 562 If a pre-arrival test was required, the rate of infected travelers arriving from origin  $i$  that were exposed  $a$  days ago is

$$T_i^{k,1}(t, a) = v_i^k(t)(1 - t_{sens}(a - 2))n_i(t, a), \quad (\text{B8})$$

563 where  $v_i^k(t)$  is the travel volume from origin  $i$  of rotational workers ( $k = rw$ ) or regular travelers ( $k = r$ ) who  
 564 departed on date  $t$  (see Eqs. (A3), (A4), and (A5)),  $1 - t_{sens}(a - 2)$  is the probability of a false negative test for  
 565 individuals exposed  $a$  days ago, where the test is assumed to occur 2 days before departure, when the infection  
 566 prevalence at  $i$  is  $n_i(t, a)$ . The complete details of how we parameterized the probability of true PCR test,  $t_{sens}(a)$ ,  
 567 are provided in Appendix B.

568 It is assumed that individuals with symptoms who receive a false negative test result on a pre-departure test still  
 569 travel. When no pre-departure test is required, some travelers do not travel due to symptoms. The rate at which  
 570 infected travelers that were exposed  $a$  days ago arrive from origin  $i$  when no pre-departure test is required is

$$T_i^{k,0}(t, a) = v_i^k(t) n_i(t, a) \rho \psi \Lambda(a), \quad (\text{B9})$$

571 where travelers develop symptoms with probability  $\rho$ , travel irrespective of symptoms with probability  $\psi$ , and first  
 572 develop symptoms before departure (when their infection age is  $a$  at departure) with probability  $\Lambda(a)$ , where

$$\Lambda(a) = \sum_{\alpha=0}^a \lambda(\alpha) \quad (\text{B10})$$

573 and,

$$\lambda(a) = \Gamma(a, \text{shape} = 5.807, \text{scale} = 0.948) \Delta a. \quad (\text{B11})$$

574 This parameterization is from [Lauer et al \(2020\)](#), and corresponds to the first symptoms occurring a mean of 5.5  
 575 days after exposure with a standard deviation of 2.3 days ([Hart et al, 2021](#)). The probability density is discretized  
 576 with  $\Delta a = 1$  day because other data for our model occurs only at 1 day intervals. The cumulative mass function Eq.  
 577 (B10) is used because travelers with infection age  $a$  that decided not to depart on date  $t$  may have first developed  
 578 symptoms at any time 0 to  $a$  days after exposure.

579 In Canada, a pre-arrival test policy for international travelers was enacted on January 7, 2021. Having a negative  
 580 COVID-19 test result (72 hours prior to departure) was required for travelers departing from international ports  
 581 ([Government of Canada, 2020](#)) and from May 15, 2021, it was necessary for all travelers ([Traveler COVID-19](#)  
 582 [Testing 2021](#), see Table C7). The rate that infected travelers arrived in NL with an infection of age  $a$  is

$$T_i^k(t, a) = \mathbb{1}_{\text{PRE},i}^k(t) T_i^{k,1}(t, a) + (1 - \mathbb{1}_{\text{PRE},i}^k(t)) T_i^{k,0}(t, a), \quad (\text{B12})$$

583 where  $\mathbb{1}_{\text{PRE},i}^k(t)$  is an indicator variable that is equal to 1 if a pre-departure test is required for travelers of type  $k$ ,  
 584 departing from origin  $i$  at time  $t$ , and 0 otherwise.

## 585 Appendix C Post-arrival testing to identify travel-related cases

### 586 C.1 Testing of rotational workers

587 The final component of the epidemiological model is post-arrival testing, in order to compare our predictions with  
 588 the reported number of travel-related cases in NL. From the early stages of the pandemic, there were specific post-  
 589 arrival testing measures that applied to rotational workers (see Table C7). We define the number of rotational  
 590 workers that test positive on their first post-arrival test occurring  $j_1$  days after arrival from origin  $i$ , and that are  
 591 reported as travel-related cases on day  $t = t_t + j_1 + t_{rep}$ , as

$$R_i^{rw,1}(t_t + j_1 + t_{rep}) = \sum_{a=0}^{13} t_{sens}(a + j_1) T_i^{rw}(t_t, a), \quad (\text{C13})$$

**Table C7** COVID-19 testing requirements for travellers arriving in Newfoundland and Labrador due to border measures implemented by the Government of Canada or Special Measures Orders issued by Newfoundland and Labrador.

Dates	Test policy
2020-09-09	Asymptomatic rotational workers are exempt from the requirement to self-isolate for 14 days if received a negative test between five and seven days after their return
2020-11-25	Rotational workers required to wait until day seven of their 14 day self-isolation period to arrange COVID-19 testing
2021-01-07	Requirement for mandatory negative COVID-19 test result for air passengers entering Canada announced (Federal measure)
2021-03-12	Domestic rotational workers can cease self-isolation if testing negative (tested upon return, day 7 and on day 11,12 or 13)
2021-03-27	Updated rotational worker requirements: must isolate away from families for 14 days, cannot avail test on day 7 or modified self-isolation
2021-04-19	Essential workers entering the province required to self-isolate until they receive their 1st negative test result
2021-05-15	COVID-19 Testing order to Individuals arriving in NL (testing requirements during their 14-day self-isolation)

592 where  $t_t$  is the date of departure (assumed to be the same day as arrival in NL). To explain Eq. (C13), by the time  
 593 the post-arrival test is completed, the days since exposure  $a$  for the infected traveler at time  $t$  has advanced by  
 594  $j_1$  days from the time of departure  $t_t$ ; furthermore, test results are not reported for another  $t_{rep} = 1$  days, which  
 595 is the assumed delay between taking the test and having the result reported. The exposure date amongst travel-  
 596 related cases is not reported, so we sum across all ages of infection between 0 and 13 days prior to departure. It is  
 597 conventional to write all the time shifts on the right hand side of the equation, however, our presentation of Eq.  
 598 C13 is to make it easier to understand the ‘age of infection’ shift whereby testing occurs  $j_1$  days after arrival.

599 For positive results on the second and third post-arrival tests, occurring  $j_2$  and  $j_3$  days after arrival, but not  
 600 any post-arrival tests prior (i.e., for the third post-arrival test, not testing positive on either the first or second  
 601 post-arrival test) is,

$$R_i^{rw,2}(t_t + j_2 + t_{rep}) = \sum_{a=0}^{13} (1 - t_{sens}(a + j_1)) t_{sens}(a + j_2) T_i^{rw}(t_t, a), \quad (C14)$$

$$R_i^{rw,3}(t_t + j_3 + t_{rep}) = \sum_{a=0}^{13} (1 - t_{sens}(a + j_1)) (1 - t_{sens}(a + j_2)) t_{sens}(a + j_3) T_i^{rw}(t_t, a), \quad (C15)$$

602 where a positive result for the second and third post-arrival tests is reported at times  $t = t_t + j_2 + t_{rep}$  and  
 603  $t = t_t + j_3 + t_{rep}$ , respectively.

604 The number of positive tests for rotational workers is calculated by summing results from all tests that were  
 605 required, i.e.,

$$R_i^{rw}(t) = \sum_k R_i^{rw,k}(t). \quad (C16)$$

606 We do not consider tests for rotational workers based on developing symptoms when at least one post-arrival test  
 607 was mandatory for rotational workers.



## 608 C.2 Travelers that develop symptoms after arrival

609 During the public health emergency, regular travelers arriving in NL were required to self-isolate. Regular travelers  
 610 may have been reported as a travel-related case if they developed symptoms and requested a test. We assume that  
 611 this test occurred  $t_r$  days after symptom onset, and if positive, was reported  $t_{rep} = 1$  day later. Thus, the number  
 612 of regular traveler that are tested because they have symptoms is given by

$$R_i^{r,s}(t_t + t_{rep} + \bar{a} + t_r) = \rho P^S \sum_{a=0}^{13} T_i^r(t_t, a) t_{sens}(a + \bar{a} + t_r), \quad (\text{C17})$$

613 where  $T_i^r(t_t, a)$  is the rate that regular travelers arrive from  $i$  on day  $t_t$  with an infection of age  $a$ ,  $\rho$  is the probability  
 614 that infected travelers have symptomatic infections, and  $P^S$  is the probability that travelers with symptoms request  
 615 a test. The mean time to develop symptoms for arriving travelers is  $\bar{a}$  days after arrival, and the probability of a  
 616 true positive test result  $t_r$  days later is  $t_{sens}(a + \bar{a} + t_r)$ . The mean time to developing symptoms after arrival is  
 617 calculated as,

$$\bar{a} = \sum_{a=0}^{13} \sum_{a_t=0}^{13} a \lambda(a + a_t) p(a_t), \quad (\text{C18})$$

618 where the probability that an arriving traveler has age of infection  $a_t$  is,

$$p(a_t) = \frac{\frac{1}{14} (1 - \rho(1 - \psi) \Lambda(a))}{\sum_{a=0}^{13} \frac{1}{14} (1 - \rho(1 - \psi) \Lambda(a))}. \quad (\text{C19})$$

619 Since we only predict cases each day, and  $t_{sens}(a)$  is a discrete function defined each day,  $\bar{a}$  from Eq. (C18) is  
 620 rounded to the nearest integer before being used in Eq. (C17).

621 The probability of infections of age  $a_t$  amongst arriving travelers is calculated assuming that exposure times for  
 622 travelers are uniformly distributed as 0 to 13 days before departure, and that  $1 - \psi$  travelers that develop symptoms  
 623 before departure do not travel. The average timing of first symptoms after arrival is calculated assuming no pre-  
 624 departure test. As some travelers do not travel due to symptoms, the distribution of ages of infection in arriving  
 625 travelers is skewed right (i.e., the tail is to the right) because more arriving travelers were exposed shortly before  
 626 to departure.

627 The use of  $\bar{a}$  in Eq. (C17) is an approximation because, more exactly, a traveler arriving on day  $t_t$  with infection  
 628 age  $a$  might first show symptoms on any of the days post-arrival (14 possible days). For our model, there are 273  
 629 possible arrival days (September 1, 2020 to May 31, 2021) and 14 possible ages of infection at arrival, which means  
 630 that it is necessary to calculate 3,822 values corresponding to each arrival date and age of infection. If we consider  
 631 that travelers might first develop symptoms on any of the 14 days they are in self-isolation after arrival, then the  
 632 number of calculations necessary increases to 53,508. To reduce the number of calculations needed, we assume that  
 633 all arriving travelers first experience symptoms  $\bar{a}$  days after arrival, where the value of  $\bar{a}$  has some epidemiological  
 634 basis (see Eq. (C18)), but is assumed equal for all travelers irrespective of when they were exposed.

### 635 C.3 Asymptomatic regular travelers

636 Arriving regular travelers with asymptomatic infections could also be detected as travel-related cases because NL  
 637 public health, at times, issued exposure notifications and asked all travelers arriving on particular flights to arrange  
 638 for PCR testing (see Table C8 in Appendix C). As a consequence, such notifications mostly help detect individuals  
 639 infected on the flight rather than prior to departure (i.e., infection age  $a = 0$  at time  $t_t$ ). Therefore, the number of  
 640 arriving regular travelers detected due to exposure notifications is,

$$R_i^{r,e}(t_t + t_r + t_{rep}) = v_i^r(t_t)P_i^A t_{sens}(t_r + t_e), \quad (C20)$$

641 where  $v_i^r(t_t)$  is the volume of regular travelers arriving on day  $t_t$  from origin  $i$ , and  $P_i^A$  is the probability that  
 642 travelers are infected during a flight and comply with the request to complete testing, where it is assumed that  
 643 exposure notifications are issued  $t_e$  days after arrival and travelers are tested  $t_r$  days after requesting a test, such  
 644 that the probability of a positive test result if infected is  $t_{sens}(t_r + t_e)$ . In NL, close contacts of travelers that were  
 645 required to undergo asymptomatic testing were reported as such, and were not included in the number of cases  
 646 reported as travel-related. We consider only regular travelers in the travel volume, as for much of the public health  
 647 emergency in NL, rotational workers were required to complete post-arrival tests (Table C7). Eq. (C20) assumes that  
 648 regular travelers who were exposed on flights were not infected prior to departure. While this is an approximation  
 649 with few exposure notifications it is unlikely that our equations will result in substantial double counting of infected  
 650 individuals because we counted these individuals both as infected during a flight, and infected pre-departure.

**Table C8** Exposure notification from Public Health Advisories in NL during the COVID-19 pandemic where passengers on arriving flights were asked to arrange COVID-19 testing ([Government of Newfoundland Labrador, 2023](#)).

Date	Exposure notification to passengers	Origin	Destination
2020-09-27	WestJet Flights 306 arrived on Monday, September 21 WestJet Flights 328 arrived on Monday, September 21	Winnipeg, MB Toronto, ON	St. John's, NL St. John's, NL
2020-10-05	Air Canada Flight AC604 arrived on Wednesday, September 30 Air Canada Flight AC8876 arrived on Wednesday, September 30	Toronto, ON Halifax, NS	Halifax, NS Deer Lake, NL
2020-10-23	Air Canada Flight 7484 arrived on Monday, October 12	Toronto, ON	Deer Lake, NL
2020-11-04	Air Canada Flight 7484 arrived on Friday, October 30	Toronto, ON	Deer Lake, NL
2020-11-23	Air Canada Flight 8880 arrived on Thursday, November 19	Halifax, NS	Deer Lake, NL
2020-11-24	People who returned to NL from Nova Scotia in the last two weeks, and who visited bars in Halifax and surrounding metro communities	NS	NL
2020-12-04	WestJet Flight 3428 arrived on Thursday, November 26	Halifax, NS	St. John's, NL
2020-12-20	Several flight advisories this weekend: Air Canada Flight 8862 arrived on Monday, December 7 Air Canada Flight 690 arrived on Friday, December 11 Air Canada Flight 8862 arrived on Friday, December 11 Air Canada Flight 8862 arrived on Tuesday, December 15 Air Canada Flight 690 arrived on Tuesday, December 15 Air Canada Flight 690 arrived on Thursday, December 17	Halifax, NS Toronto, ON Halifax, NS Halifax, NS Toronto, ON Toronto, ON	Gander, NL St. John's, NL Gander, NL Gander, NL St. John's, NL St. John's, NL
2020-12-29	Air Canada Flight 8880 arrived on Tuesday, December 22	Halifax, NS	Deer Lake, NL
2021-01-20	Who traveled on the MV Blue Puttees to and from North Sydney, Nova Scotia, and Port Aux Basques between Tuesday, December 29 and Saturday, January 16	Sydney, NS	Port Aux Basques, NL
2021-02-15	Air Canada Flight 7484 arrived on Thursday, February 11,	Toronto, ON	Deer Lake, NL
2021-03-04	Air Canada Flight 8996 arrived on Thursday, February 25	Halifax, NS	St. John's, NL
2021-04-19	Air Canada Flight 8008 arrived on Monday, April 13	Toronto, ON	Deer Lake, NL
2021-05-02	Air Canada Flight 8016 arrived on Friday, April 30	Montreal, QC	St. John's, NL
2021-05-06	Air Canada Flight 7540 arrived on Tuesday, May 4	Toronto, ON	Deer Lake, NL
2021-05-11	Air Canada Flight 7542 arrived on Monday, May 10	Toronto, ON	Deer Lake, NL

## 651 Appendix D Reported travel-related cases

652 The predictions of the epidemiological model are compared with the number of travel-related cases reported as  
 653 originating from Canada or internationally. These data are also the response variables for statistical models. For  
 654 travelers from international origins,

$$R_{\text{INT}}(t) = R_{\text{INT}}^{r,e}(t) + R_{\text{INT}}^{r,s}(t), \quad (\text{D21})$$

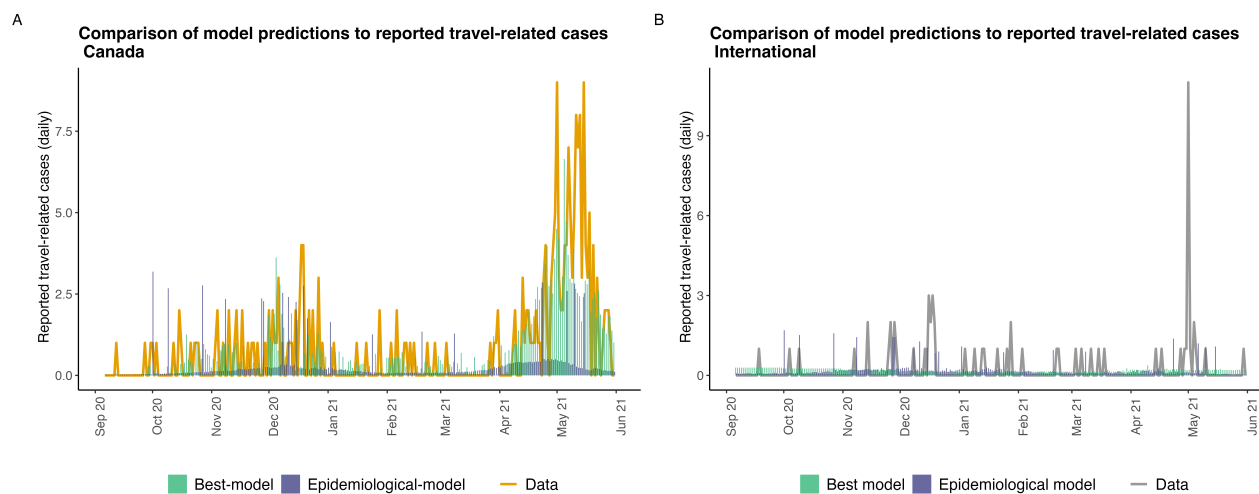
655 and for travelers from Canadian origins,

$$R_{\text{CA}}(t) = \sum_i R_i^{r,e}(t) + R_i^{rw}(t) + R_i^{r,s}(t), \quad (\text{D22})$$

656 where the sum  $i$  is across all Canadian provinces and territories. An overview of the model and summary of  
 657 parameters is given in Figure 1 and Tables B6.

## 658 Appendix E Model selection

659 Figure 4C and D show the predictions of the best models (Canada: Model 1 and International: Model 1; Table  
 660 2) and the epidemiological models (Canada: Model 7 and International: Model 4) where model predictions and  
 661 travel-related cases are shown as their monthly values. Figure E2 shows the same information using daily values.



**Fig. E2** Predicted reported travel-related cases arriving in NL (daily) for the epidemiological model (blue bars) and the best model (green bars; see Table 2) for travelers originating from (A) Canadian and (B) international origins. In both A and B, daily travel-related cases reported in NL are shown with lines.

## 662 Appendix [References]

663 Aleman DM, Tham BZ, Wagner SJ, et al (2021) How effective was Newfoundland & Labrador’s travel ban to  
 664 prevent the spread of COVID-19? An agent-based analysis. medRxiv

665 Amendment No. 6 (2020) Government of Newfoundland Labrador, Health and Community Services, URL <https://www.gov.nl.ca/covid-19/files/Special-Measures-Order-Amendment-No.-6-April-23-2020.pdf>, [April 23, 2020]  
 666

- 667 Amendment No. 8 (2020) Government of Newfoundland Labrador, Health and Community Services, URL <https://www.gov.nl.ca/covid-19/files/Special-Measures-Order-Amendment-No.-8-April-25-2020.pdf>, [April 25, 2020]  
668
- 669 Amendment No.11 (2020) Government of Newfoundland Labrador, Health and Community Services, URL <https://www.gov.nl.ca/covid-19/files/Special-Measures-Order-Amendment-No.-11-April-29-2020.pdf>, [April 29, 2020]  
670
- 671 Atlantic Travel Amendments (2020) Government of Newfoundland Labrador, Health and Community Services,  
672 URL <https://www.gov.nl.ca/covid-19/files/Special-Measures-Order-Atlantic-Travel-Amendments-July-3-2020.pdf>, [July 3, 2020]  
673
- 674 Blood Donation Organizations (2023) The COVID-19 Immunity Task Force, Seroprevalence in Canada by province  
675 over time, URL <https://www.covid19immunitytaskforce.ca/seroprevalence-in-canada/>, [Updated on: February  
676 14, 2023]
- 677 Canadian Institute for Health Information (2022) Canadian COVID-19 Intervention Timeline, URL <https://www.cihi.ca/en/canadian-covid-19-intervention-timeline>, [Updated: October 13, 2022]  
678
- 679 Centers for Disease Control and Prevention (2020-2021) Nationwide covid-19 infection- and vaccination-  
680 induced antibody seroprevalence (blood donations), URL [https://covid.cdc.gov/covid-data-tracker/  
681 #nationwide-blood-donor-seroprevalence](https://covid.cdc.gov/covid-data-tracker/#nationwide-blood-donor-seroprevalence), [Updated on: February 18, 2022]
- 682 Declaration Exemption Order (2020) Government of Newfoundland Labrador, Health and Community Services,  
683 URL <https://www.gov.nl.ca/covid-19/files/Declaration-Exemption-Order-May-16-2020.pdf>, [May 16, 2020]
- 684 Dong E, Du H, Gardner L (2020) An interactive web-based dashboard to track COVID-19 in real time. *The Lancet  
685 Infectious Diseases* 20(5):533–534
- 686 Exemption Order (2020) Government of Newfoundland Labrador, Health and Community Services, URL [https://  
687 www.gov.nl.ca/covid-19/files/Special-Measures-Order-Exemption-Order-March-20-2020.pdf](https://www.gov.nl.ca/covid-19/files/Special-Measures-Order-Exemption-Order-March-20-2020.pdf), [March 20, 2020]
- 688 Exemption Order 2 (2020) Government of Newfoundland Labrador, Health and Community Services, URL [https://  
689 www.gov.nl.ca/covid-19/files/Exemption-Order-March-21-2020-new.pdf](https://www.gov.nl.ca/covid-19/files/Exemption-Order-March-21-2020-new.pdf), [March 21, 2020]
- 690 Godin A, Xia Y, Buckeridge DL, et al (2021) The role of case importation in explaining differences in early SARS-  
691 CoV-2 transmission dynamics in Canada—A mathematical modeling study of surveillance data. *International  
692 Journal of Infectious Diseases* 102:254–259
- 693 Government of Canada (2020) New pre-departure COVID-19 testing requirements come into effect for  
694 all air travellers flying into Canada, URL [https://www.canada.ca/en/transport-canada/news/2021/01/  
695 new-pre-departure-covid-19-testing-requirements-come-into-effect-for-all-air-travellers-flying-into-canada.htm](https://www.canada.ca/en/transport-canada/news/2021/01/new-pre-departure-covid-19-testing-requirements-come-into-effect-for-all-air-travellers-flying-into-canada.htm),  
696 [January 6, 2021]
- 697 Government of Newfoundland and Labrador (2020-2021) Department of Tourism, Culture, Arts and Recreation,  
698 URL <https://www.gov.nl.ca/tcar/tourism-division/visitor-and-market-insights/>
- 699 Government of Newfoundland Labrador (2016) Tourism, Culture, Arts and Recreation. 2016 EXIT SURVEY PRO-  
700 FILE OF VACATION VISITORS FROM CANADA, URL [https://www.gov.nl.ca/tcar/files/5\\_Vacation\\_Visitor\\_  
701 Profile\\_Canadians.pdf](https://www.gov.nl.ca/tcar/files/5_Vacation_Visitor_Profile_Canadians.pdf)
- 702 Government of Newfoundland Labrador (2017) Tourism, Culture, Arts and Recreation, THE SHOULDER SEASON  
703 VISITOR, A profile of spring and fall visitors to Newfoundland and Labrador, URL [https://www.gov.nl.ca/tcar/  
704 files/7\\_Shoulder\\_Season\\_Vacation\\_Travellers\\_-\\_Infographic.pdf](https://www.gov.nl.ca/tcar/files/7_Shoulder_Season_Vacation_Travellers_-_Infographic.pdf)
- 705 Government of Newfoundland Labrador (2018a) Department of Tourism, Culture, Arts and Recreation, Newfound-  
706 land and Labrador Provincial Tourism Performance 2018, URL [www.gov.nl.ca/tcar/files/Annual\\_Performance\\_  
707 Report\\_2018\\_Final\\_June\\_-2019.pdf](http://www.gov.nl.ca/tcar/files/Annual_Performance_Report_2018_Final_June_-2019.pdf)

- 708 Government of Newfoundland Labrador (2018b) Tourism, Culture, Arts and Recreation. 2016 EXIT SUR-  
709 VEY – Result Highlights, URL [https://www.gov.nl.ca/tcar/files/2016\\_Exit\\_Survey\\_Highlights\\_Report\\_FINAL-](https://www.gov.nl.ca/tcar/files/2016_Exit_Survey_Highlights_Report_FINAL_REVISED_June_2018.pdf)  
710 [REVISED\\_June\\_2018.pdf](https://www.gov.nl.ca/tcar/files/2016_Exit_Survey_Highlights_Report_FINAL_REVISED_June_2018.pdf), [Updated June 2018]
- 711 Government of Newfoundland Labrador (2023) Health and Community Services, URL [https://www.gov.nl.ca/](https://www.gov.nl.ca/releases/category/health/)  
712 [releases/category/health/](https://www.gov.nl.ca/releases/category/health/), [Updated on: April 11, 2023]
- 713 Hart WS, Maini PK, Thompson RN (2021) High infectiousness immediately before COVID-19 symptom onset  
714 highlights the importance of continued contact tracing. *elife* 10:e65534
- 715 Hellewell J, Russell TW, Beale R, et al (2021) Estimating the effectiveness of routine asymptomatic PCR testing  
716 at different frequencies for the detection of SARS-CoV-2 infections. *BMC medicine* 19(1):1–10
- 717 Hendy S, Steyn N, James A, et al (2021) Mathematical modelling to inform New Zealand’s COVID-19 response.  
718 *Journal of the Royal Society of New Zealand* 51(sup1):S86–S106
- 719 Hewitt CM, Haan M, Neis B (2018) Interprovincial employees from Newfoundland and Labrador, 2005-2014.  
720 Memorial University of Newfoundland
- 721 Hurford A, Martignoni MM, Loredó-Osti JC, et al (2023) Pandemic modelling for regions implementing an  
722 elimination strategy. *Journal of Theoretical Biology* 561:111378
- 723 International Air Transport Association (2020) Economic performance of the airline industry, URL [https://www.](https://www.iata.org)  
724 [iata.org](https://www.iata.org)
- 725 Labrador-Quebec Border Amendments (2020) Government of Newfoundland Labrador, Health  
726 and Community Services, Special Measures Order, URL [https://www.gov.nl.ca/covid-19/files/](https://www.gov.nl.ca/covid-19/files/Special-Measures-Order-Labrador-Quebec-Border-Amendments-June-26-2020.pdf)  
727 [Special-Measures-Order-Labrador-Quebec-Border-Amendments-June-26-2020.pdf](https://www.gov.nl.ca/covid-19/files/Special-Measures-Order-Labrador-Quebec-Border-Amendments-June-26-2020.pdf), [June 25, 2020]
- 728 Lauer SA, Grantz KH, Bi Q, et al (2020) The incubation period of coronavirus disease 2019 (COVID-19) from  
729 publicly reported confirmed cases: estimation and application. *Annals of internal medicine* 172(9):577–582
- 730 Lou B, Li TD, Zheng SF, et al (2020) Serology characteristics of SARS-CoV-2 infection after exposure and post-  
731 symptom onset. *European Respiratory Journal* 56(2)
- 732 Martignoni MM, Rahman P, Hurford A (2022) Rotational worker vaccination provides indirect protection to vul-  
733 nerable groups in regions with low COVID-19 prevalence. *AIMS Mathematics* 7:3988–4003. URL [doi:10.3934/](https://doi.org/10.3934/math.2022220)  
734 [math.2022220](https://doi.org/10.3934/math.2022220)
- 735 Martignoni MM, Mohammadi Z, Loredó-Osti J, et al (2023) Extensive SARS-CoV-2 testing reveals BA.1/BA.2  
736 asymptomatic rates and underreporting in school children. *Can Commun Dis Rep* 49:155–65. URL [https://doi.](https://doi.org/10.14745/ccdr.v49i04a08)  
737 [org/10.14745/ccdr.v49i04a08](https://doi.org/10.14745/ccdr.v49i04a08)
- 738 Public Health Infobase (2020-2021) Public Health Agency of Canada, Coronavirus disease (COVID-19), URL  
739 <https://open.canada.ca/data/en/dataset/261c32ab-4cfd-4f81-9dea-7b64065690dc>, [Released January 2020]
- 740 Re-Opening - Travel (2021) Government of Newfoundland Labrador, Health and Community Services, URL [https:](https://www.gov.nl.ca/covid-19/files/Special-Measures-Order-Re-opening-Travel-July-1-2021.pdf)  
741 [//www.gov.nl.ca/covid-19/files/Special-Measures-Order-Re-opening-Travel-July-1-2021.pdf](https://www.gov.nl.ca/covid-19/files/Special-Measures-Order-Re-opening-Travel-July-1-2021.pdf), [July 1, 2021]
- 742 Self-Isolation Exemption Order (2020) Government of Newfoundland Labrador, Health and Community Services,  
743 URL <https://www.gov.nl.ca/covid-19/files/Self-Isolation-Exemption-Order-May-16-2020.pdf>, [May 16, 2020]
- 744 Smith LE, Amlôt R, Lambert H, et al (2020) Factors associated with adherence to self-isolation and lockdown  
745 measures in the UK: a cross-sectional survey. *Public Health* 187:41–52

- 746 Statistics Canada (2020-2021) Frontier counts, URL <https://www23.statcan.gc.ca/imdb/p2SV.pl?Function=getSurvey&SDDS=5005>, [Updated on: March 13, 2023]  
747
- 748 Statistics Canada (2021) Census Profile, 2021 Census of Population, URL <https://www12.statcan.gc.ca/census-recensement/2021/dp-pd/prof/index.cfm?Lang=E>, [Updated on: March 29, 2023]  
749
- 750 The United States government (2021) United States Census Bureau, U.S. and World Population Clock, URL  
751 <https://www.census.gov/popclock/>, [Reported: December 31, 2021]
- 752 Travel Exemption Order (2020) Government of Newfoundland Labrador, Health and Community Services, URL  
753 <https://www.gov.nl.ca/covid-19/files/Travel-Exemption-Order.pdf>, [May 5, 2020]
- 754 Traveler COVID-19 Testing (2021) Government of Newfoundland Labrador, Health and  
755 Community Services, Special Measures Order, URL <https://www.gov.nl.ca/covid-19/files/Special-Measures-Order-Traveller-COVID-19-Testing-May-15-2021.pdf>, [May 15, 2021]  
756
- 757 Trudeau J (2020) Prime Minister announces new actions under Canada's  
758 COVID-19 response, URL <https://pm.gc.ca/en/news/news-releases/2020/03/16/prime-minister-announces-new-actions-under-canadas-covid-19-response>, [March 16, 2020]  
759