

1 **Title: Achieving behavior change at scale: Causal evidence from a national**
2 **lifestyle intervention program for pre-diabetes in the UK**

3 **Authors:** Julia M. Lemp¹; Christian Bommer^{1,2}; Min Xie¹; Anant Jani^{1,3}; Justine I. Davies⁴⁻⁶; Till
4 Bärnighausen^{1,7,8}; Sebastian Vollmer²; Pascal Geldsetzer^{9,10*}

5 **Affiliations:**

6 ¹Heidelberg Institute of Global Health, Heidelberg University Hospital; Heidelberg, Germany

7 ²Department of Economics and Centre for Modern Indian Studies, University of Göttingen;
8 Göttingen, Germany

9 ³Oxford Martin School, Oxford University; Oxford, UK

10 ⁴Institute for Applied Health Research, University of Birmingham; Birmingham, UK

11 ⁵Centre for Global Surgery, Department of Global Health, Stellenbosch University; Cape
12 Town, South Africa

13 ⁶Medical Research Council/Wits University Rural Public Health and Health Transitions
14 Research Unit, Faculty of Health Sciences, University of the Witwatersrand; Johannesburg,
15 South Africa

16 ⁷Africa Health Research Institute; Somkhele, South Africa

17 ⁸Department of Global Health and Population, Harvard T.H. Chan School of Public Health,
18 Harvard University; Boston, MA, USA

19 ⁹Division of Primary Care and Population Health, Stanford University; Stanford, CA, USA

20 ¹⁰Chan Zuckerberg Biohub; San Francisco, CA, USA

21 *Corresponding author. Email: pgeldsetzer@stanford.edu

22
23 **Abstract:** There remains widespread doubt among clinicians that mere lifestyle advice and
24 counseling provided in routine care can achieve improvements in health. We aimed to determine
25 the health effects of the largest behavior change program for pre-diabetes globally (the English
26 Diabetes Prevention Programme) when implemented at scale in routine care. We exploited the
27 threshold in glycated hemoglobin (HbA1c) used to decide on program eligibility by applying a
28 regression discontinuity design, one of the most credible quasi-experimental strategies for causal
29 inference, to electronic health data from approximately one-fifth of all primary care practices in
30 England. Program referral led to significant improvements in patients' HbA1c and body mass
31 index. This analysis provides causal, rather than associational, evidence that lifestyle advice and
32 counseling implemented in a national health system can achieve important health improvements.

1 By 2030, the number of adults with diabetes globally is expected to reach 578 million, representing 10.2% of the
2 global adult population (1). Diabetes is an important cause of mortality, morbidity, and health-system costs (2).
3 There is, thus, an urgent need to implement population-based interventions that prevent diabetes, enhance its early
4 detection, and address cardiovascular risk factors to prevent or delay its progression to complications. In particular,
5 type 2 diabetes (T2DM), which accounts for approximately 90% of the total diabetes burden, is a major risk factor
6 for cardiovascular disease, with people with diabetes having a more than twofold increase in the risk of incident
7 chronic heart disease compared to those without diabetes (3). Worryingly, and at least partly driven by the increase
8 in excess weight and obesity, diabetes prevalence and diabetes-related deaths continue to rise in most parts of the
9 world (4).

10 Often resulting from socioecological contexts, individual behaviors such as poor nutrition, hazardous alcohol
11 consumption, and physical inactivity play a key role in the development of T2DM (5). While targeting individual
12 behavior as a preventive strategy for T2DM has been controversial (6), behavior change programs (sometimes
13 referred to as lifestyle interventions or similar) have been efficacious in controlled clinical trials (7, 8). In the
14 seminal US Diabetes Prevention Program study (which serves as a model for many behavior change programs in the
15 US and elsewhere) (9, 10), targeting changes in lifestyle behavior was even more effective than metformin in
16 preventing or delaying diabetes. However, trials such as the US Diabetes Prevention study have mainly focused on
17 efficacy, supplying proof of principle that the intervention worked when one-to-one sessions with specialists and a
18 range of incentives are being provided (11). Thus, while a recent meta-analysis concluded that lifestyle modification
19 provides strong evidence for reversing pre-diabetes in adults (12), it remains important to establish the
20 transferability of behavior change programs into real-world settings.

21 Establishing that behavior change programs work in routine care is essential for several reasons. First, although
22 lifestyle counseling is the recognized first-line treatment option for people presenting with pre-diabetes and other
23 cardiovascular risk factors, clinicians often revert to prescribing preventive medication due to limited time resources
24 in primary care (13), insufficient knowledge and referral options for promoting healthy lifestyles (14, 15), and a
25 predominance of the biomedical model with clinicians being uncertain about the success of counseling (14, 16). In
26 particular, doubt that behavior change at the level required for substantial weight loss is possible to achieve for most
27 patients is prevalent among primary care clinicians (17). Second, participants enrolling in clinical trials for behavior
28 change programs are unlikely to be representative of the broader patient population. For example, patients enrolled

1 in clinical cardiology trials, compared with patients encountered in everyday practice, had a lower risk profile as
2 they were younger, more likely to be male, and less likely to have a comorbid disease (18). Individuals drawn from
3 an unselected, general population may respond differently, given their lower health literacy and willingness to
4 engage, higher comorbidities, and greater ethnic diversity (19, 20).

5 Hence, we advance the argument that the impact of behavior change programs on population health must relate to
6 real-world effectiveness and should, thus, be evaluated in an “observational, non-interventional trial in a naturalistic
7 setting” akin to phase IV in drug development (21, 22). However, conventional observational studies that are
8 generally applied in health research have the disadvantage that they may fail to account for major confounding
9 factors such as selection biases and, thus, preclude causal interpretations. In contrast, in this study, we provide
10 causal evidence for the effectiveness of a behavior change program using an innovative causal inference method in
11 large-scale routine data.

12 We establish causality by applying a regression discontinuity approach that combines a rich set of electronic health
13 records from the English National Health Service with variation in treatment probabilities generated by guidelines
14 from the National Institute for Health and Clinical Excellence (NICE) that recommend intensive lifestyle counseling
15 for people at high risk of progression to T2DM (23). Specifically, we exploit the fact that the NHS Diabetes
16 Prevention Programme (NHS DPP), a behavior change program with weight loss, diet, and physical activity goals
17 consisting of at least 13 group sessions over the course of nine months and the largest DPP globally to achieve
18 universal population coverage, is only open to patients above a prespecified threshold of HbA1c or fasting plasma
19 glucose (24). This way we can take advantage of existing large-scale routine health data while still obtaining causal
20 effect estimates that are not vulnerable to confounding and measurement error (25, 26). Ultimately, our study aims
21 to determine the real-world health effects of the NHS DPP, investigating whether a routine behavior change program
22 in a national health system has the potential to lead to improvements in key cardiovascular risk factors such as
23 HbA1c, excess weight, raised blood pressure, and blood lipid levels.

24 **Results**

25 Our primary outcome was change in HbA1c. Secondary outcomes included changes in body mass index (BMI),
26 body weight, blood pressure, serum cholesterol levels, and serum triglycerides levels. We also conducted
27 exploratory analyses investigating the effect of program referral on the probability of diabetes, hypertension, and

1 hyperlipidemia incidence; newly prescribed medications for these conditions; diabetic complication; all-cause
2 mortality; and emergency hospitalization for a major adverse cardiovascular event. A detailed definition of each
3 outcome is provided in table S1.

4 *Data source and sample selection*

5 Our study used data from the Clinical Practice Research Datalink (CPRD) Aurum and NHS England's Hospital
6 Episode Statistics (HES). CPRD Aurum is a large primary care database of de-identified electronic health records
7 from a network of approximately one-fifth of General Practitioner (GP) practices across England. To ensure
8 sufficient implementation of the NHS DPP during the study period after the start of the phased roll-out in mid-2016,
9 our population of interest consisted of adults (aged 18 to 80 years) who received an HbA1c test between January 1st,
10 2017, and December 31st, 2018. Data were available until the end of June 2020. We identified 2 106 376 patients
11 who had a baseline HbA1c test during the enrolment and met inclusion criteria for our primary cohort (see Methods
12 and Materials). 2 052 480 of these (97.4%) had been registered with their GP for at least 6 months following the
13 index date. Patient characteristics are described in Table 1. Their mean age was 51 years, 915 717 (43.5%) were men
14 and 1 190 659 (56.5%) were women, and their mean baseline HbA1c level was 36.6 mmol/mol. The median time to
15 endline HbA1c during follow-up was 20.5 months (interquartile range, 13.5-26.8). Of the 2 052 480 patients who
16 had a follow-up time of at least 6 months, 2 037 384 (99.3%) were linkable to HES hospitalization data. At baseline,
17 749 884 (36.5%) people had already received at least one prescription for a blood pressure-lowering medication and
18 411 288 (20.0%) for a lipid-lowering medication.

19 [Insert Table 1]

20 *Meeting the statistical assumptions*

21 In the first part of the analysis, we ensured that all necessary assumptions for a regression discontinuity analysis are
22 met. Importantly, we tested the validity of the continuity assumption (25). First, the density distribution of baseline
23 HbA1c should be continuous around the threshold; this would be violated if patients (or providers) could precisely
24 manipulate baseline HbA1c. As shown in fig. S1, there was no indication of heaping or manipulation of HbA1c
25 values around the threshold. Secondly, baseline covariates (such as age or previous contact with health service
26 providers) should be balanced, i.e., continuous, at the threshold. As it is in randomized controlled clinical trials,
27 evidence of balance on baseline observables provides confidence that patients assigned to treatment and control

1 conditions are exchangeable. We showed that this assumption is met by plotting the relationship between baseline
2 HbA1c and potential confounders using third-order global polynomial regressions (Fig. 1). The illustrated balance
3 on baseline observables was statistically supported by local linear regressions that yielded no significant
4 discontinuities at the eligibility threshold (Fig. 1, table S3).

5 [Insert Fig. 1]

6 *Program referrals in routine care increase at the eligibility threshold*

7 While increasing HbA1c is associated with an increase in risks of diabetes and cardiovascular disease (27), the
8 HbA1c eligibility threshold of 42 mmol/mol (6%) to enter the program does not represent a pathophysiological
9 phenomenon at that specific threshold value. Rather, since the association is continuous and HbA1c was measured
10 with random measurement error, patients just below and above the threshold are close to identical in their
11 underlying characteristics and, thus, effectively randomized to being referred to the program or not. Using a local
12 linear approach, we compared patients lying closely on either side of the threshold which allows for the
13 interpretation of differences in clinical outcomes as causal (26).

14 Local linear regression demonstrated a 10.8 percentage points increase in treatment assignment at the HbA1c
15 eligibility threshold. In relative terms, patients just above the threshold were five times more likely to be referred
16 compared to patients just below the threshold (Fig. 1). Receipt of treatment was defined as a record of a referral to a
17 behavior change program or intensive lifestyle counseling during the 12 months after the baseline HbA1c test.
18 Treatment primarily included referrals to the NHS DPP, but we also included referrals to other structured programs
19 and intensive lifestyle counseling as they are likely to serve as an alternative where placement in NHS DPP is not
20 possible. 26 970 patients with a baseline HbA1c between 42 and 47 mmol/mol were referred to a behavior change
21 program or intensive lifestyle counseling, of which 20 963 (77.7%) were referred to the NHS DPP. 4 800 patients
22 declined NHS DPP referrals offered by their GP. All records considered as treatments are listed in table S4. For
23 convenience only, we henceforth refer to these treatments simply as intensive lifestyle counseling.

24 *Glycemic control is improved*

25 Patients who were referred to intensive lifestyle counseling significantly improved their HbA1c levels. Specifically,
26 we evaluated the effect of referral to intensive lifestyle counseling on glycemic control by fitting separate regression
27 lines of the association between baseline HbA1c and change in HbA1c above and below the eligibility threshold.

1 The difference in where these lines intersect the threshold quantifies the discontinuity in the outcome and can be
2 described as the intention-to-treat effect of the threshold rule (-0.10 mmol/mol, 95% CI -0.16, -0.03). The intention-
3 to-treat effect measures the effect of being eligible for intensive lifestyle counseling as determined by the guideline
4 rather than the effect of actually being referred and is therefore dependent on the probability of treatment at the
5 threshold, i.e., how many GPs adhere to the guidelines. Thus, to obtain the true effect of being referred to intensive
6 lifestyle counseling (the complier average causal effect), it is necessary to scale the intention-to-treat effect by the
7 difference in the probability of treatment at the threshold. When doing this, we find a significant negative effect of
8 referral to intensive lifestyle counseling on HbA1c at follow-up (-0.85 mmol/mol, 95% CI -1.46, -0.24).

9 While the clinical significance of a 0.85 mmol/mol reduction in HbA1c is difficult to judge at an individual level
10 due to limited available data in the non-diabetic range, observational clinical data suggest a linear association
11 between HbA1c and cardiovascular disease, even in non- or prediabetic individuals (27). For example, as a reference
12 point, after adjusting for major conventional cardiovascular risk factors, individuals having HbA1c levels of 5.5% to
13 5.7% (which roughly translates to 37 to 39 mmol/mol) were almost twice as likely to be diagnosed with coronary
14 artery disease compared to individuals with less than 5.5% (28). Thus, it is likely that a reduction of 1.50 mmol/mol
15 is meaningful at the population level.

16 The intention-to-treat effects of the threshold rule and the causal effects of intensive lifestyle counseling for all
17 outcomes are displayed alongside optimal bandwidth and sample size in Table 2. To ensure that the finding of
18 improved glycemic control is not sensitive to our selected bandwidth or functional form (linear, quadratic, or
19 polynomial), we show that effect sizes were robust to different choices (Fig. 2, table S5-6).

20 [Insert Table 2]

21 [Insert Fig. 2]

22 *Confounding by medications is unlikely*

23 It is unlikely that our finding of a beneficial effect of being referred to intensive lifestyle counseling on HbA1c is
24 due to confounding by medication prescription or use. To rule out that we may falsely attribute improvements in
25 glycemic control to intensive lifestyle counseling whereby they were in fact induced by diabetes medication, we
26 adjusted our results for newly prescribed diabetes medication. In general, having an HbA1c level above the
27 eligibility threshold for the NHS DPP was associated with a small increase in the probability of being prescribed

1 diabetes medication shortly after treatment assignment (risk difference in percentage points [RD] = 0.04, 95% CI 0,
2 0.09), which increased to 0.3 percentage points at follow-up (Table 2). However, the discontinuity in the probability
3 of being prescribed diabetes medication was not significant when using robust bias-correct confidence intervals for
4 inference (table S8). There was no discontinuity in newly prescribed lipid-lowering medication (RD = 0.29, 95% CI
5 -0.23, 0.82) or blood pressure-lowering medication (RD = 0.11, 95% CI -0.38, 0.60). Specifically, out of 26 513
6 patients with a baseline HbA1c between 42 and 47 mmol/mol who were referred to intensive lifestyle counseling,
7 only 882 (3.3%) were prescribed diabetes medication during the 12 months following treatment assignment with
8 numbers increasing with increasing HbA1c levels; these numbers are unlikely to substantially impact improvements
9 in glycemic control. Indeed, when adjusting our results for being prescribed diabetes medication during follow-up,
10 the estimated causal effect of intensive lifestyle counseling on glycemic control indicated a larger reduction in
11 HbA1c, suggesting that improvements in HbA1c were not driven by increased uptake in diabetes medication (Table
12 2). We refrained from excluding patients who initiated medication from our analysis as this is likely to introduce
13 bias given that the probability of being prescribed diabetes medication changed discontinuously at the threshold.

14 *Secondary outcomes provide additional evidence for health improvements at scale*

15 In secondary analyses, we found evidence that other key cardiovascular risk factors improved. Results showed a
16 significant association of intensive lifestyle counseling with reduced BMI (-1.35 kg/m², 95% CI -1.88, -0.83) and
17 reduced weight (-2.99 kg, 95% CI -4.38, -1.61). Albeit not significant, effect estimates were also in the direction of
18 benefit for blood pressure levels (diastolic: -1.35 mmHg, 95% CI, -3.31, 0.61; systolic: -2.03 mmHg, 95% CI -4.96,
19 0.91). When adjusting results for the prescription of blood pressure-lowering medication, improvements in systolic
20 blood pressure persisted and became marginally significant ($p = 0.092$; Table 2). Referral to intensive lifestyle
21 counseling also significantly reduced triglyceride levels (-0.33 mmol/l, 95% CI -0.54, -0.12) and increased HDL
22 levels (0.04 mmol/l, 95% CI 0, 0.09). There was no significant effect on other serum cholesterol levels (LDL and the
23 total cholesterol-to-HDL ratio), and no effect on the probability of being prescribed lipid-lowering medication.
24 Results were robust to adjusting for baseline observables and using different bandwidths (table S6-7, fig. fig S2-
25 S12), a global polynomial approach (table S5), and alternative treatment definitions (table S8).

26 *Exploratory analyses suggest limited short-term downstream health effects*

27 Diabetic complications, emergency hospitalization for major adverse cardiovascular events, and mortality were not
28 significantly reduced by being referred to intensive lifestyle counseling in exploratory analyses (Table 2, fig. S13-

1 15). The low incidence of adverse downstream events during our relatively short follow-up period, with 26 567
2 (1.3%) of patients dying and 36 567 (1.8% of those 2 037 384 linkable to HES data) having an emergency
3 hospitalization for a major adverse cardiovascular event, resulted in low statistical power for detecting small, short-
4 term changes in these outcomes. Further analyses using T2DM, hypertension, and hyperlipidemia incidence as
5 outcomes are shown in the Supplemental Text. We interpreted these results cautiously since diagnoses in electronic
6 health records may be less reliable than biochemical measures (29) and a stronger focus on identifying people who
7 are at risk of diabetes is likely to initially increase the incidence of T2DM independent of health improvements (30).
8 Lastly, we present a set of additional sensitivity analyses in the Supplement ruling out that potential sample selection
9 effects due to immortal time bias or differential loss to follow-up may be responsible for our results (Supplementary
10 Text, fig. S16-20, table S9-11).

11 *Men may be benefitting more than women*

12 Results stratified by gender, age group, ethnicity, socioeconomic status (based on the Index of Multiple Deprivation
13 which is derived from the patient's postcode), and rural or urban practice location are presented in the Supplement
14 (table S12-26). Stratification led to relatively small sample sizes for practices in rural locations and patients with
15 Asian, Black, or Mixed ethnicity and in the youngest age group. Being referred to an intensive lifestyle intervention
16 led to significant improvements in HbA1c, weight, blood pressure, and triglycerides in men, but not women (table
17 S12-16). Both men and women significantly improved their BMI although effect estimates suggest larger
18 improvements in men compared to women. There was no indication that a higher socioeconomic status was
19 consistently associated with greater benefits (table S13-14).

20 **Discussion**

21 In our study using routine, population-based electronic health records, we found causal evidence that referral to
22 intensive lifestyle counseling led to improved glycemic control and reductions in BMI and weight. While
23 prescriptions of diabetes medication increased slightly at the same time, sensitivity analyses demonstrated that
24 observed improvements in glycemic control were not driven by medication. While we were not able to demonstrate
25 a significant reduction in mortality or emergency hospitalization for major adverse cardiovascular events in the
26 fairly short timeframe since program implementation, improvements in intermediary health markers that are key to

1 progression to T2DM establish the potential of intensive lifestyle counseling to improve population health when
2 implemented at scale.

3 *Our “real world” results are largely comparable to effects in clinical trials*

4 An intervention should only be considered effective if it works in people who have been offered the intervention in a
5 routine setting rather than generalizing from participants who receive the intervention in a controlled research setting
6 (31). Thus, while previous studies have merely shown that intensive lifestyle counseling is *efficacious* in improving
7 cardiovascular risk factors when performed in controlled research settings, we now present evidence that these
8 health benefits can be successfully translated to and scaled up in routine care. Importantly—and not self-evidently—
9 reductions in HbA1c, BMI, and weight in our study are comparable to effect sizes from clinical trials. Meta-analyses
10 of controlled clinical trials studying effects on weight loss and blood pressure found effect sizes comparable to those
11 presented in our study (32–35). These meta-analyses showed mixed effects on glucose outcomes, with both positive
12 and null estimates having been reported (32–34, 36). In an early process evaluation (without a control group) of the
13 NHS DPP (24), adults who attended at least one of 13 group-based intervention sessions had an HbA1c reduction of
14 1.26 mmol/mol and a mean weight loss of 2.3 kg. Given the fact that the wider availability and uptake of behavior
15 change programs are currently still limited, our study lends support to calls for further investment in behavioral,
16 population-based interventions and targeted strategies for individuals at risk for diabetes that are currently not
17 reached through care pathways. Cardiovascular risk factors may be managed more effectively by integrating health
18 professionals who are trained in the delivery of behavior change into primary health care teams and by improving
19 workflow and referral processes, rather than relying on limited lifestyle advice by GPs (37).

20 Our results further suggest a decrease in the probability of being prescribed lipid-lowering medication, which
21 appeared to have contributed to an increase, and thus adverse, effect on serum LDL at the eligibility threshold. A
22 potential explanation may be that GPs are hesitant to concurrently refer patients to a behavior change program and
23 prescribe lipid-lowering medication, presuming positive effects of lifestyle changes on blood lipids. At the same
24 time, evidence from clinical trials suggests that lifestyle changes are more likely to consistently improve HDL and
25 triglycerides levels while LDL is less likely to be affected (35). However, the evidence is not conclusive (38).
26 Potential unintentional downstream effects of disease-specific behavior change programs, such as reduced
27 prescriptions of medications that are likely beneficial independent of behavior change, warrant further research
28 attention.

1 *Applying rigorous quasi-experimental methods to routine data can advance our understanding of health service*
2 *interventions*

3 We demonstrated the feasibility of using a regression discontinuity approach for evaluating a population-wide health
4 service intervention by leveraging a threshold in treatment assignment induced by clinical guidelines. Thresholds are
5 ubiquitous in clinical medicine and, thus, represent vast opportunities to generate causal, rather than associational,
6 evidence of treatment effectiveness. In conjunction with increasing access to routine electronic health records and
7 detailed health information, regression discontinuity analyses have the potential to greatly contribute to advancing
8 evidence-based health care and implementation science for several reasons. First, many conceivable research
9 questions that are of interest to clinical medicine and health systems research cannot be studied in conventional or
10 pragmatic randomized trials, either for feasibility (such as very long follow-up periods, for example, to establish the
11 effectiveness of anti-aging agents) or ethical reasons (such as potential harmful side effects of medical treatments)
12 (39, 40). Second, since later-stage translation research questions required for population impact are frequently
13 underfunded and understudied (41), applying quasi-experimental methods such as regression discontinuity to routine
14 data could be a pragmatic approach to assessing the sustained benefit of programs similar to the NHS DPP. While
15 social scientists are often concerned with the fact that effects estimated by regression discontinuity designs are not
16 generalizable to observations further away from the threshold (42), this is less relevant to applications in clinical
17 medicine because often patients close to the threshold are precisely those in whom we are most interested. Lastly,
18 regression discontinuity designs may be used to investigate aspects of health equity, for example, heterogenous
19 treatment effects between patient groups concerning sociodemographic characteristics and comorbidities, for which
20 randomized controlled trials usually have too small of a sample size or an insufficiently diverse study population.

21 *Limitations and challenges in our study*

22 Inherent to any regression discontinuity analysis is the limitation that we can only estimate the causal effect for
23 those who initiate the treatment *because* they crossed the threshold. This effect may differ from the (unobserved)
24 treatment effects for patients that would have received lifestyle counseling regardless of baseline HbA1c levels (the
25 “always takers”), for example, because of clinical symptoms, or patients who would not have participated in any
26 program or counseling even if eligible (the “never takers”). Additionally, effects may not be generalizable to those
27 further away from the HbA1c threshold that defines prediabetes. In our analysis, we mainly relied on the CACE, the
28 causal average complier effect, estimating the effect for those who were actually referred to an intervention. Given

1 that there was a large percentage of individuals presenting above the HbA1c threshold who were not referred to any
2 lifestyle counseling opportunity, it is important to not mistake the observed CACE effects for the population health
3 effect of the NHS DPP. While the NHS DPP is operating at a large scale, with 100 000 referrals being offered in
4 2021 (43), there remains a substantial share of adults in England with impaired glycemc control who are presently
5 not taking part in intensive lifestyle counseling, whether it would be because placements in the NHS DPP are
6 insufficiently available or other barriers exists that decrease compliance in populations that are at risk of diabetes.

7 Another potential limitation is the violation of the exclusion restriction, whereby treatments or exposures other than
8 intensive lifestyle counseling are affected by crossing the cutoff. While we could not precisely control for the
9 relationship between drug dosage and secondary outcomes, we are confident that the observed health effects were
10 not attributable to increased medication following treatment assignment as effect estimates were robust to adjusting
11 for drug prescriptions. Further, it is likely that patients classified as high risk for progression to T2DM have been
12 under closer observation by GPs and that GPs may have taken additional steps to mitigate the risk. While we cannot
13 entirely preclude that the effects on clinical endpoints may have been caused by closer monitoring through the GP or
14 self-care rather than intensive lifestyle counseling, we believe this is very unlikely because a placebo analysis using
15 data before the NHS DPP roll-out provided no evidence that increased monitoring above the threshold (due to the
16 already implemented guideline) would have led to the observed health improvements. Similarly, using electronic
17 health records may have introduced a so-called informative observation scheme or informed presence due to
18 differential loss to follow-up, leading to a biased observation of outcomes (44). Outcomes such as HbA1c or BMI
19 were more likely to be observed in the follow-up period if patients had crossed the threshold. Since the intensity of
20 healthcare utilization may be considered a marker of health, it may be that patients (in particular below the
21 threshold) were more likely to consult their GP if they had other underlying health conditions or showed symptoms
22 during the follow-up period, making patients with many visits systematically different from those with few and
23 potentially contributing to the observed discontinuities in health outcomes. However, we addressed this concern by
24 conditioning our results on the number of GP visits, which did not substantially change our results, and performing a
25 sensitivity analysis restricting our sample to patients with regular GP visits before their treatment assignment.

26 Finally, we had to rely on what is recorded in electronic health records, e.g., we had no detailed information about
27 adherence to behavior change programs and lifestyle counseling. However, this is only of minor concern as we are

1 most interested in whether the positive effects of such a program would persist in the “real world”, precisely despite
2 non-adherence to the program.

3 *Conclusion*

4 The initially described skepticism about the effectiveness of lifestyle counseling for successful behavior change may
5 stem from clinicians’ experience that brief lifestyle counseling—that is often the only feasible approach in GP
6 consultations with pressing time constraints—may be of no or very limited effectiveness. However, we show that
7 referrals for intensive lifestyle counseling in routine care, in the form of a population-wide diabetes prevention
8 program, appears to be effective. Ultimately, investments in structured, intensive behavior change programs may not
9 only reduce the risk of complications from diabetes and cardiovascular events, but their positive effects may also
10 extend to other non-communicable diseases such as cancer, which is increasingly thought to be connected to
11 unhealthy lifestyle habits and environments (45), or communicable diseases such as influenza or COVID-19, which
12 more gravely affect people with known cardiovascular risk factors such as diabetes (46). Thus, our study not only
13 demonstrates that intensive lifestyle counseling targeted at pre-diabetes can achieve important health improvements
14 in routine care but also shows a potential route for improving population health more broadly.

1 Main references

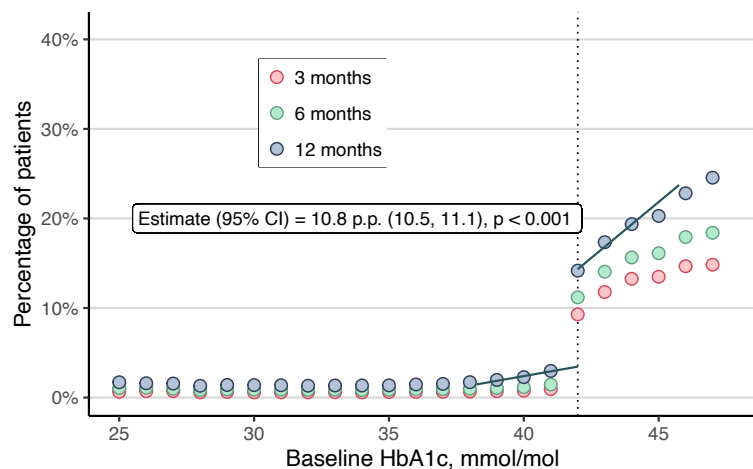
- 2 1. P. Saeedi, I. Petersohn, P. Salpea, B. Malanda, S. Karuranga, N. Unwin, S. Colagiuri, L.
3 Guariguata, A. A. Motala, K. Ogurtsova, J. E. Shaw, D. Bright, R. Williams, Global and
4 regional diabetes prevalence estimates for 2019 and projections for 2030 and 2045:
5 Results from the International Diabetes Federation Diabetes Atlas, 9th edition. *Diabetes*
6 *Research and Clinical Practice*. **157**, 107843 (2019).
- 7 2. World Health Organization, Global action plan for the prevention and control of
8 noncommunicable diseases 2013–2020 (2013), (available at
9 http://apps.who.int/gb/ebwha/pdf_files/WHA66/A66_R10-en.pdf?ua=1).
- 10 3. The Emerging Risk Factors Collaboration, Diabetes mellitus, fasting blood glucose
11 concentration, and risk of vascular disease: a collaborative meta-analysis of 102
12 prospective studies. *The Lancet*. **375**, 2215–2222 (2010).
- 13 4. NCD Risk Factor Collaboration (NCD-RisC), Worldwide trends in diabetes since 1980: a
14 pooled analysis of 751 population-based studies with 4·4 million participants. *The Lancet*.
15 **387**, 1513–1530 (2016).
- 16 5. M. Asif, The prevention and control the type-2 diabetes by changing lifestyle and dietary
17 pattern. *Journal of Education and Health Promotion*. **3**, 1 (2014).
- 18 6. E. Barry, S. Roberts, S. Finer, S. Vijayaraghavan, T. Greenhalgh, Time to question the
19 NHS diabetes prevention programme. *BMJ*, h4717 (2015).
- 20 7. S. Taheri, H. Zaghoul, O. Chagoury, S. Elhadad, S. H. Ahmed, N. El Khatib, R. A.
21 Amona, K. El Nahas, N. Suleiman, A. Alnaama, A. Al-Hamaq, M. Charlson, M. T. Wells,
22 S. Al-Abdulla, A. B. Abou-Samra, Effect of intensive lifestyle intervention on bodyweight
23 and glycaemia in early type 2 diabetes (DIADEM-I): an open-label, parallel-group,
24 randomised controlled trial. *The Lancet Diabetes & Endocrinology*. **8**, 477–489 (2020).
- 25 8. D. E. Laaksonen, J. Lindstrom, T. A. Lakka, J. G. Eriksson, L. Niskanen, K. Wikstrom, S.
26 Aunola, S. Keinanen-Kiukaanniemi, M. Laakso, T. T. Valle, P. Ilanne-Parikka, A.
27 Louheranta, H. Hamalainen, M. Rastas, V. Salminen, Z. Cepaitis, M. Hakumaki, H.
28 Kaikkonen, P. Harkonen, J. Sundvall, J. Tuomilehto, M. Uusitupa, Physical Activity in the
29 Prevention of Type 2 Diabetes: The Finnish Diabetes Prevention Study. *Diabetes*. **54**,
30 158–165 (2005).
- 31 9. Diabetes Prevention Program Research Group, Long-term effects of lifestyle intervention
32 or metformin on diabetes development and microvascular complications over 15-year
33 follow-up: the Diabetes Prevention Program Outcomes Study. *The Lancet Diabetes &*
34 *Endocrinology*. **3**, 866–875 (2015).
- 35 10. A. Ramachandran, C. Snehalatha, S. Mary, B. Mukesh, A. D. Bhaskar, V. Vijay, The
36 Indian Diabetes Prevention Programme shows that lifestyle modification and metformin
37 prevent type 2 diabetes in Asian Indian subjects with impaired glucose tolerance (IDPP-
38 1). *Diabetologia*. **49**, 289–297 (2006).
- 39 11. S. Brink, The Diabetes Prevention Program: How The Participants Did It. *Health Affairs*.
40 **28**, 57–62 (2009).
- 41 12. K. I. Galaviz, M. B. Weber, K. Suvada, U. P. Gujral, J. Wei, R. Merchant, S.
42 Dharanendra, J. S. Haw, K. M. V. Narayan, M. K. Ali, Interventions for Reversing

- 1 Prediabetes: A Systematic Review and Meta-Analysis. *American Journal of Preventive*
2 *Medicine* (2022), doi:10.1016/j.amepre.2021.10.020.
- 3 13. G. Irving, A. L. Neves, H. Dambha-Miller, A. Oishi, H. Tagashira, A. Verho, J. Holden,
4 International variations in primary care physician consultation time: a systematic review
5 of 67 countries. *BMJ Open*. **7**, e017902 (2017).
- 6 14. M. Rubio-Valera, M. Pons-Vigués, M. Martínez-Andrés, P. Moreno-Peral, A. Berenguera,
7 A. Fernández, Barriers and Facilitators for the Implementation of Primary Prevention and
8 Health Promotion Activities in Primary Care: A Synthesis through Meta-Ethnography.
9 *PLoS ONE*. **9**, e89554 (2014).
- 10 15. C. Keyworth, T. Epton, J. Goldthorpe, R. Calam, C. J. Armitage, *British Journal of Health*
11 *Psychology*, in press, doi:10.1111/bjhp.12368.
- 12 16. E. T. Hébert, M. O. Caughy, K. Shuval, Primary care providers' perceptions of physical
13 activity counselling in a clinical setting: a systematic review. *British Journal of Sports*
14 *Medicine*. **46**, 625–631 (2012).
- 15 17. A. Dewhurst, S. Peters, A. Devereux-Fitzgerald, J. Hart, Physicians' views and
16 experiences of discussing weight management within routine clinical consultations: A
17 thematic synthesis. *Patient Education and Counseling*. **100**, 897–908 (2017).
- 18 18. T. Kennedy-Martin, S. Curtis, D. Faries, S. Robinson, J. Johnston, A literature review on
19 the representativeness of randomized controlled trial samples and implications for the
20 external validity of trial results. *Trials*. **16**, 495 (2015).
- 21 19. J. G. Ford, M. W. Howerton, G. Y. Lai, T. L. Gary, S. Bolen, M. C. Gibbons, J. Tilburt, C.
22 Baffi, T. P. Tanpitukpongse, R. F. Wilson, N. R. Powe, E. B. Bass, Barriers to recruiting
23 underrepresented populations to cancer clinical trials: A systematic review. *Cancer*. **112**,
24 228–242 (2008).
- 25 20. J. R. Rogers, C. Liu, G. Hripcsak, Y. K. Cheung, C. Weng, Comparison of Clinical
26 Characteristics Between Clinical Trial Participants and Nonparticipants Using Electronic
27 Health Record Data. *JAMA Network Open*. **4**, e214732 (2021).
- 28 21. V. Suvarna, Phase IV of Drug Development. *Perspectives in clinical research*. **1**, 57–60
29 (2010).
- 30 22. M. S. Hagger, M. Weed, DEBATE: Do interventions based on behavioral theory work in
31 the real world? *International Journal of Behavioral Nutrition and Physical Activity*. **16**, 36
32 (2019).
- 33 23. NICE (National Institute for Health and Care Excellence), Type 2 diabetes: prevention in
34 people at high risk. 2012, (available at <https://www.nice.org.uk/guidance/ph38>).
- 35 24. J. Valabhji, E. Barron, D. Bradley, C. Bakhai, J. Fagg, S. O'Neill, B. Young, N.
36 Wareham, K. Khunti, S. Jebb, J. Smith, Early Outcomes From the English National Health
37 Service Diabetes Prevention Programme. *Diabetes Care*. **43**, 152–160 (2020).
- 38 25. M. D. Cattaneo, N. Idrobo, R. Titunik, *A Practical Introduction to Regression*
39 *Discontinuity Designs* (Cambridge University Press, 2019);
40 <https://www.cambridge.org/core/product/identifier/9781108684606/type/element>).
- 41 26. G. W. Imbens, T. Lemieux, Regression discontinuity designs: A guide to practice. *Journal*

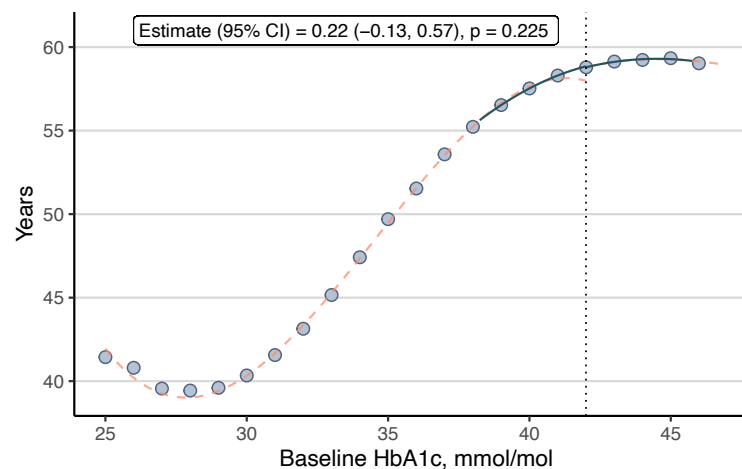
- 1 *of Econometrics*. **142**, 615–635 (2008).
- 2 27. E. Selvin, M. W. Steffes, H. Zhu, K. Matsushita, L. Wagenknecht, J. Pankow, J. Coresh,
3 F. L. Brancati, Glycated Hemoglobin, Diabetes, and Cardiovascular Risk in Nondiabetic
4 Adults. *New England Journal of Medicine*. **362**, 800–811 (2010).
- 5 28. N. Garg, N. Moorthy, A. Kapoor, S. Tewari, S. Kumar, A. Sinha, A. Shrivastava, P. K.
6 Goel, Hemoglobin A1c in Nondiabetic Patients: An Independent Predictor of Coronary
7 Artery Disease and Its Severity. *Mayo Clinic Proceedings*. **89**, 908–916 (2014).
- 8 29. R. Persson, C. Vasilakis-Scaramozza, K. W. Hagberg, T. Sponholtz, T. Williams, P.
9 Myles, S. S. Jick, CPRD Aurum database: Assessment of data quality and completeness of
10 three important comorbidities. *Pharmacoepidemiology and Drug Safety*. **29**, 1456–1464
11 (2020).
- 12 30. Public Health England, Diabetes UK, NHS England, NHS DPP overview and FAQ. NHS
13 England Publications Gateway Reference 05728 (2016), (available at
14 <https://www.england.nhs.uk/wp-content/uploads/2016/08/dpp-faq.pdf>).
- 15 31. K. S. Courneya, Efficacy, effectiveness, and behavior change trials in exercise research.
16 *International Journal of Behavioral Nutrition and Physical Activity*. **7**, 81 (2010).
- 17 32. K. I. Galaviz, M. B. Weber, A. Straus, J. S. Haw, K. M. V. Narayan, M. K. Ali, Global
18 Diabetes Prevention Interventions: A Systematic Review and Network Meta-analysis of
19 the Real-World Impact on Incidence, Weight, and Glucose. *Diabetes Care*. **41**, 1526–1534
20 (2018).
- 21 33. M. Cardona-Morrell, L. Rychetnik, S. L. Morrell, P. T. Espinel, A. Bauman, Reduction of
22 diabetes risk in routine clinical practice: are physical activity and nutrition interventions
23 feasible and are the outcomes from reference trials replicable? A systematic review and
24 meta-analysis. *BMC Public Health*. **10**, 653 (2010).
- 25 34. U. Mudaliar, A. Zabetian, M. Goodman, J. B. Echouffo-Tcheugui, A. L. Albright, E. W.
26 Gregg, M. K. Ali, Cardiometabolic Risk Factor Changes Observed in Diabetes Prevention
27 Programs in US Settings: A Systematic Review and Meta-analysis. *PLOS Medicine*. **13**,
28 e1002095 (2016).
- 29 35. D. E. Jonas, K. Crotty, J. D. Y. Yun, J. C. Middleton, C. Feltner, S. Taylor-Phillips, C.
30 Barclay, A. Dotson, C. Baker, C. P. Balio, C. E. Voisin, R. P. Harris, Screening for
31 Prediabetes and Type 2 Diabetes. *JAMA*. **326**, 744 (2021).
- 32 36. N. P. Pronk, Structured diet and physical activity programmes provide strong evidence of
33 effectiveness for type 2 diabetes prevention and improvement of cardiometabolic health.
34 *Evidence Based Medicine*. **21**, 18–18 (2016).
- 35 37. A. C. Blonstein, V. Yank, R. S. Stafford, S. R. Wilson, L. G. Rosas, J. Ma, Translating an
36 Evidence-Based Lifestyle Intervention Program Into Primary Care. *Health Promotion
37 Practice*. **14**, 491–497 (2013).
- 38 38. L. Aucott, D. Gray, H. Rothnie, M. Thapa, C. Waweru, Effects of lifestyle interventions
39 and long-term weight loss on lipid outcomes - a systematic review. *Obesity Reviews*. **12**,
40 e412–e425 (2011).
- 41 39. R. Goulden, B. H. Rowe, M. Abrahamowicz, E. Strumpf, R. Tamblyn, Association of
42 Intravenous Radiocontrast With Kidney Function. *JAMA Internal Medicine*. **181**, 767

- 1 (2021).
- 2 40. A. A. Soukas, H. Hao, L. Wu, Metformin as Anti-Aging Therapy: Is It for Everyone?
3 *Trends in Endocrinology & Metabolism*. **30**, 745–755 (2019).
- 4 41. E. Proctor, D. Luke, A. Calhoun, C. McMillen, R. Brownson, S. McCrary, M. Padek,
5 Sustainability of evidence-based healthcare: research agenda, methodological advances,
6 and infrastructure support. *Implementation Science*. **10**, 88 (2015).
- 7 42. B. de la Cuesta, K. Imai, Misunderstandings About the Regression Discontinuity Design
8 in the Study of Close Elections. *Annual Review of Political Science*. **19**, 375–396 (2016).
- 9 43. NHS Digital, Diabetes Prevention Programme: Non-Diabetic Hyperglycaemia, January to
10 December 2021. *National Diabetes Audit* (2022), (available at
11 [https://files.digital.nhs.uk/1E/852B7B/NDA_NDH_2021-22_Q3_01.01.21_to](https://files.digital.nhs.uk/1E/852B7B/NDA_NDH_2021-22_Q3_01.01.21_to_31.12.21.xlsx)
12 [31.12.21.xlsx](https://files.digital.nhs.uk/1E/852B7B/NDA_NDH_2021-22_Q3_01.01.21_to_31.12.21.xlsx)).
- 13 44. B. A. Goldstein, N. A. Bhavsar, M. Phelan, M. J. Pencina, Controlling for Informed
14 Presence Bias Due to the Number of Health Encounters in an Electronic Health Record.
15 *American Journal of Epidemiology*. **184**, 847–855 (2016).
- 16 45. V. A. Katzke, R. Kaaks, T. Kühn, Lifestyle and Cancer Risk. *The Cancer Journal*. **21**,
17 104–110 (2015).
- 18 46. A. Silverio, M. Di Maio, R. Citro, L. Esposito, G. Iuliano, M. Bellino, C. Baldi, G. De
19 Luca, M. Ciccarelli, C. Vecchione, G. Galasso, Cardiovascular risk factors and mortality
20 in hospitalized patients with COVID-19: systematic review and meta-analysis of 45
21 studies and 18,300 patients. *BMC Cardiovascular Disorders*. **21**, 23 (2021).
- 22

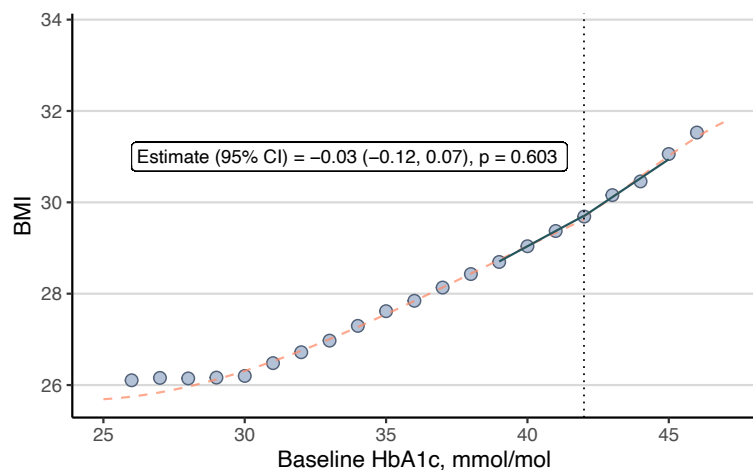
A Intensive lifestyle counseling



B Age



C Baseline BMI



D Prior GP consultations

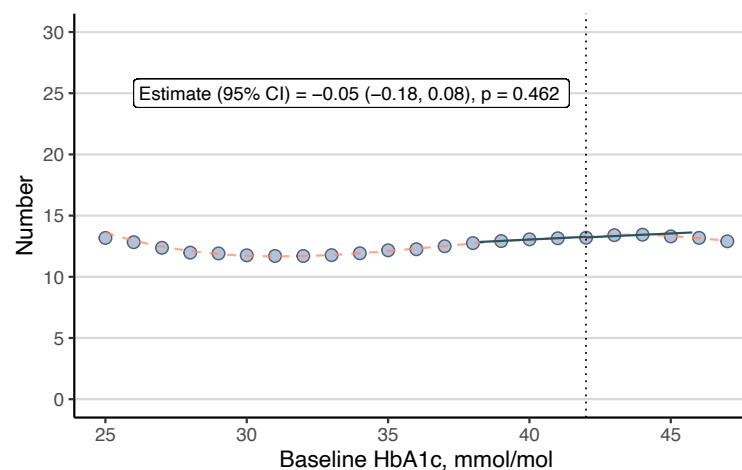
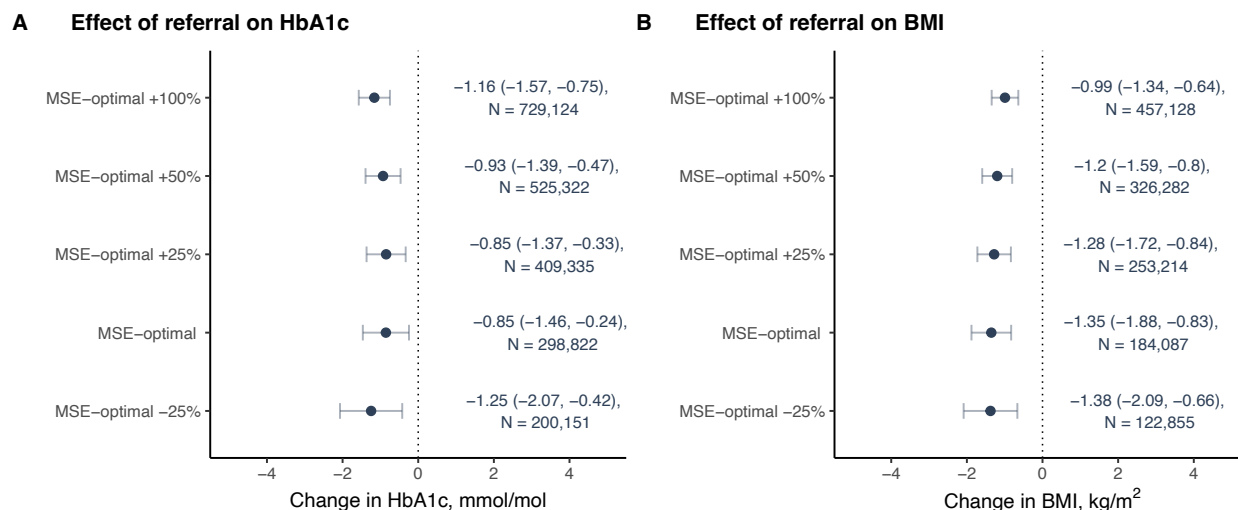


Fig. 1. Association between baseline HbA1c and intensive lifestyle counseling and potential confounders. BMI = Body mass index. p.p. = percentage points. (A) Primary exposure ('First stage') after 3, 6, and 12 months after baseline HbA1c. (B), (C), and (D), Potential confounders. The blue lines show the local linear regression models within the bandwidth used in our primary analysis. The orange dotted lines show the global polynomial relationship. The blue circles represent the mean value for individual patients and the dotted vertical lines indicate the HbA1c cutoff. The estimate represents the discontinuity at the HbA1c threshold, whereas discontinuities in potential confounders may jeopardize assumptions underlying regression discontinuity.

1



2

3 **Fig. 2. Robustness of the effects of being referred to intensive lifestyle counseling on HbA1c and BMI across**
4 **bandwidth choices.** MSE = mean-squared error. The mean-squared error (MSE)-optimal bandwidth is 3.8
5 mmol/mol below and above the threshold. The figure displays the estimated causal average complier effect of
6 referral to intensive lifestyle counseling on (A) change in HbA1c and (B) change in BMI from local linear
7 regressions with varying bandwidths (i.e., 75%, 125%, 150%, or 200%) of the MSE-optimal bandwidth with
8 heteroskedasticity-robust 95% CI and triangular kernel weights. The sample size of patients in each bandwidth is
9 given alongside the effect estimates. All effect estimates are statistically significant ($p < 0.05$).

1

Variable	%	N
Age in years, mean (SD)	51 (16)	
18 to 29	11.6	243 793
30 to 39	14	295 282
40 to 49	19.5	411 201
50 to 59	21.9	461 006
60 to 69	17.9	377 073
70 to 80	15.1	318 021
Gender		
Female	56.5	915 717
Male	43.5	1 190 659
BMI, mean (SD)	28.1 (6.1)	
< 25	33.1	436 041
25 to 29.9	35.2	464 217
30 to 34.9	19.6	258 266
35 to 39.9	7.7	101 321
≥ 40	4.4	58 444
Hypertension stage based on systolic and diastolic blood pressure		
Normal (< 120 and 80)	19.3	188 906
Prehypertension (120-139 or 80-89)	59.6	583 428
Stage 1 Hypertension (140-159 or 90-99)	18.6	182 074
Stage 2 Hypertension (≥160 or ≥ 100)	2.5	24 222
	Mean	SD
Baseline blood pressure		
Diastolic, mmHg	80	11
Systolic, mmHg	132	18
Baseline lipids		
HDL, mmol/l	1.47	0.45
LDL, mmol/l	3.02	0.96
Total-cholesterol-to-HDL ratio	3.77	1.25
Triglycerides, mmol/l	1.55	0.97
Number of yearly GP consultations	12.4	10.8
Number of prior emergency hospitalization	1.13	5.37

2 **Table 1. Sample characteristics.** N = 2 106 376. Abbreviations: BMI, body mass index; GP,
3 General Practitioner. Age, gender, and number of consultations was available for the full sample.
4 Missingness in baseline BMI, blood pressure and lipids are shown in table S2.

Outcome	Unadjusted				Adjusted for medication ^a		MSE-optimal BW	Sample size ^b
	Effect of being eligible		Effect of referral		Effect of referral			
	Estimate (95% CI)	<i>P</i> value	Estimate (95% CI)	<i>P</i> value	Estimate (95% CI)	<i>P</i> value		
Primary outcome								
HbA1c, mmol/mol	-0.10 (-0.16, -0.03)	0.006	-0.85 (-1.46, -0.24)	0.006	-0.94 (-1.55, -0.34)	0.002	3.8	298 822
Secondary outcomes								
BMI, kg/m ²	-0.15 (-0.21, -0.09)	< 0.001	-1.35 (-1.88, -0.83)	< 0.001	-	-	3.8	184 087
Weight, kg	-0.33 (-0.48, -0.18)	< 0.001	-2.99 (-4.38, -1.61)	< 0.001	-	-	3.4	208 111
Diastolic BP, mmHg ^c	-0.16 (-0.4, 0.07)	0.178	-1.35 (-3.31, 0.61)	0.178	-1.54 (-3.44, 0.35)	0.111	7.5	211 778
Systolic BP, mmHg ^c	-0.24 (-0.6, 0.11)	0.175	-2.03 (-4.96, 0.91)	0.176	-2.41 (-5.21, 0.39)	0.092	5.6	243 292
HDL cholesterol, mmol/l ^d	0 (0, 0.01)	0.033	0.04 (0, 0.09)	0.033	0.04 (0, 0.09)	0.034	6.3	290 932
LDL cholesterol, mmol/l ^d	0.01 (-0.01, 0.04)	0.265	0.11 (-0.08, 0.3)	0.265	0.04 (-0.12, 0.21)	0.596	5.7	107 790
Total-cholesterol-to-HDL ratio ^d	0 (-0.02, 0.02)	0.741	-0.03 (-0.20, 0.14)	0.741	-0.09 (-0.25, 0.08)	0.286	5.4	178 852
Triglycerides, mmol/l ^d	-0.04 (-0.06, -0.01)	0.002	-0.33 (-0.54, -0.12)	0.002	-0.32 (-0.52, -0.12)	0.002	4.4	126 297
Exploratory outcomes								
Diabetes medication, RD	0.30 (0.18, 0.41)	< 0.001	2.72 (1.66, 3.78)	< 0.001	-	-	3.5	501 241
Antihypertensive medication, RD ^c	0.11 (-0.38, 0.6)	0.660	0.93 (-3.22, 5.09)	0.659	-	-	4.5	390 878
Lipid-lowering medication, RD ^d	0.29 (-0.23, 0.82)	0.271	2.61 (-2.03, 7.25)	0.271	-	-	3.2	344 522

Outcome	Unadjusted				Adjusted for medication ^a		MSE-optimal BW	Sample size ^b
	Effect of being eligible		Effect of referral		Effect of referral			
	Estimate (95% CI)	<i>P</i> value	Estimate (95% CI)	<i>P</i> value	Estimate (95% CI)	<i>P</i> value		
Exploratory outcomes								
Diabetic complication, RD	0.06 (-0.07, 0.19)	0.344	0.58 (-0.62, 1.78)	0.344	0.15 (-0.98, 1.28)	0.797	3.3	493 431
Mortality, RD	0.05 (-0.09, 0.20)	0.471	0.47 (-0.81, 1.76)	0.471	0.67 (-0.62, 1.95)	0.307	4.9	698 224
Emergency MACE hospitalization, RD	-0.05 (-0.23, 0.12)	0.550	-0.48 (-2.05, 1.09)	0.550	-0.12 (-1.68, 1.45)	0.883	7.5	211 778

Table 2. Effect of being eligible for, and effect of being referred to, intensive lifestyle counseling on Primary and Secondary Outcomes. BMI = Body mass index. BP = Blood pressure. MACE = Major adverse cardiovascular event. MSE = mean-squared error. RD = Risk difference (i.e., difference in the probability of the outcome in percentage points). The effects were estimated in local linear regressions with heteroskedasticity-robust standard errors and triangular kernel weight. The definition of all outcomes is detailed in Table S1. We compared statistical significance ($p < 0.05$) to results using robust bias-corrected confidence intervals, which yielded the same statistical inferences except for diabetes medication, which was no longer significant (table S8).

^a Effects for HbA1c and diabetic complication were adjusted for diabetes medication prescription; effects for lipid levels were adjusted for lipid-lowering medication prescription; effects for diastolic and systolic blood pressure were adjusted for blood pressure-lowering medication; and effects for mortality and MACE hospitalization were adjusted for all three medication groups. All relevant medications are listed in our Open Science Framework project (see code availability statement).

^b Sample size within MSE-optimal bandwidth.

^c Sample restricted to those without prior lipid-lowering medication prescription.

^d Sample restricted to those without prior blood pressure-lowering medication prescription.

1 **Methods**

2 **Description of the English Diabetes Prevention Programme**

3 UK NICE public health guideline 38 recommends that people who have non-diabetic hyperglycaemia and are thus at
4 high risk of progression to type 2 diabetes (HbA1c level of 42–47 mmol/mol [6.0–6.4%] or fasting plasma glucose
5 of 5.5–6.9 mmol/l) are referred to a “local, evidence-based, quality-assured intensive lifestyle change programme”
6 to prevent or delay the onset of T2DM (1). The NHS DPP began phased roll-out in 2016. The provider contracts
7 require the intervention to be delivered in face-to-face to groups of 15-20 adults over at least 13 sessions (totalling
8 16 hours) with a minimum of 9 months’ duration, with the aim of supporting behaviour change to result in improved
9 diet, increased physical activity and weight loss. Activities include a mixture of education, group support,
10 knowledge testing, visual activities, and activities led by patients (2, 3). Individuals were identified for inclusion in
11 the NHS DPP following an NHS Health Check, through retrospective searches of general practice records, or
12 through routine clinical practice (4). According to guidelines, people below the threshold should be offered brief
13 advice or intervention and receive information about services that could help them change their lifestyle, bearing in
14 mind their risk profile.
15

16 **Data source and study population**

17 The study used data from the Clinical Practice Research Datalink (CPRD) Aurum (5) and the NHS England Hospital
18 Episode Statistics Admitted Patient Care (HES APC) (6). CPRD Aurum is a large primary care database of de-
19 identified electronic health records from a network of General Practitioner (GP) practices across the UK. The data
20 are representative of the broader English population in terms of geographical spread, deprivation, age, and gender
21 (5). In July 2020, anonymized longitudinal data from 35.9 million patients and 1 296 currently contributing English
22 GP practices were available. HES APC is a secondary care database in England and records patient data related to
23 presentations in NHS hospitals or private healthcare institutions where the NHS provides partial funding.
24

25
26 In contrast to CPRD Aurum data, which does not contain lifetime follow-up of patients since patients are entering
27 the database when they register with a contributing GP practice and exiting the database when they leave that
28 practice, patients in HES APC maintain the same ID throughout their time in the database (7). As this information
29 was only available for patients linkable to HES APC, we kept all patients in the analysis regardless of whether they

1 appeared under multiple CPRD IDs. Results were insensitive to dropping all patients with multiple CPRD IDs for a
2 single HES ID from the study population.

3
4 To ensure sufficient implementation of the NHS DPP during the study period after the phased roll-out in 2016, the
5 population of interest consists of adults (aged 18 to 80 years) who received an HbA1c test between January 1st,
6 2017, and December 31st, 2018. Data were available until end of June 2020. We followed a target trial approach to
7 mimic a randomised controlled trial that would be ideally conducted to estimate the causal program impact as
8 closely as possible (table S1)^{82,83}. Exclusion criteria were all patients who (i) exceeded the HbA1c threshold for
9 diabetes or prediabetes prior to their index date (i.e., date of their baseline HbA1c record), or (ii) received any
10 diabetes medication prior to their index date (all codes available in our OSF repository). Albeit specified in the
11 NICE guideline as an alternative entry requirement, we did not use fasting plasma glucose as treatment assignment
12 variable since routine testing of fasting plasma glucose to determine non-diabetic hyperglycemia is much less
13 frequent as compared to HbA1c testing (8).

14 15 **Outcome and treatment variables**

16 The primary outcome was glycemic control measured as change in HbA1c between baseline and the final HbA1c
17 taken during follow-up. Secondary outcomes included change in BMI, body weight, systolic and diastolic blood
18 pressure, serum cholesterol levels (HDL cholesterol, LDL cholesterol, and ratio between total and HDL cholesterol),
19 and serum triglycerides level. We conducted exploratory analyses investigating the effect of program entry onto
20 probability of newly prescribed diabetes medications, blood pressure-lowering, and/or lipid-lowering medication
21 (evaluated separately), probability of any diabetic complication (ophthalmic, neurological, or renal), all-cause
22 mortality, and emergency hospitalization for major adverse cardiovascular event (MACE (9)) during follow-up. The
23 follow-up started at six months and continued until the date of an outcome or censoring event (such as death or
24 transfer-out of the patient). Details on how each outcome was defined is shown in table S1.

25
26 Receipt of treatment was captured as the record of a referral to a behavior change program or intensive lifestyle
27 counseling during the 12 months after the baseline HbA1c test. Treatment primarily included referrals to the NHS
28 DPP, but we also included referrals to other structured programs and intensive lifestyle counseling as they are likely

1 to serve as an alternative where placement in NHS DPP is not possible. All records considered as treatments are
2 listed in table S4.

4 **Statistical analysis: Main analysis**

5 We used a regression discontinuity analysis to estimate the association of intensive lifestyle counseling with
6 different outcomes quantifying patients' health status. The analysis consists of two steps: First, we estimated the
7 association between individual's baseline HbA1c and being referred to intensive lifestyle counseling ("first stage").
8 Second, we estimated the association between baseline HbA1c and each outcome by fitting separate regression lines
9 above and below the HbA1c eligibility threshold. The difference in where these lines intersect the threshold
10 quantifies the discontinuity in the outcome, our effect of interest.

11
12 Specifically, our analysis represents a fuzzy regression discontinuity (FRD) design, where the treatment is not
13 assigned deterministically but probabilistically. In the FRD design, we can estimate the intent-to-treat effect ITT_{FRD} ,
14 that is, the effect of the patient presenting just above the eligibility threshold. ITT_{FRD} measures the effect of
15 treatment eligibility, as determined by the threshold rule, and is often of interest in its own right. In particular,
16 ITT_{FRD} can be interpreted as the effect of lowering the threshold on outcomes for the full population of patients close
17 to the threshold. To obtain the effect of intensive lifestyle counseling itself on those induced to take up the
18 intervention because of the threshold rule (so-called compliers), it is necessary to scale ITT_{FRD} by the difference in
19 the probability of treatment at the threshold. This results in the complier average causal effect ($CACE_{FRD}$).

20
21 We used a local linear approach, which minimizes bias by limiting the study sample to a defined bandwidth around
22 the threshold in which a linear regression can be estimated (10). The size of the bandwidth was automatically
23 selected using a data-driven method that seeks to optimally balance the bias-variance tradeoff (10). In addition, a
24 triangular kernel was applied, such that individuals closer to the threshold were more heavily weighted than those
25 further away. For estimation, we used a robust variance estimator and controlled for fixed effects at the practice-
26 level. Additional analyses were performed to assess the sensitivity of results to bandwidth size and using
27 polynomials of varying degrees.

1 In regression discontinuity studies, unbiased visual presentation of the data is essential (11). We plot the relationship
2 between baseline HbA1c, and referral to intensive lifestyle counseling to show the discontinuity in treatment
3 assignment. We also provide visual evidence in support of key identifying assumptions that can be tested in the data:
4 The first is that the density of the data should be continuous around the threshold; this would be violated if patients
5 (or providers) could precisely manipulate the running variable baseline HbA1c. The second implication is that
6 baseline covariates should be balanced (i.e., continuous) at the threshold. As it is in randomized controlled clinical
7 trials, evidence of balance on baseline observables provides confidence that patients assigned to treatment and
8 control conditions are exchangeable. We used a global polynomial approach over the entire support of the data to
9 illustrate potential unknown relationships. We did not use the global polynomial approach for causal inference
10 procedures as it does not deliver point estimators with good properties for the treatment effect as opposed to local
11 lower-order regressions (12).

13 **Statistical analysis: Sensitivity analyses**

14 In sensitivity analyses, we adjusted for variables that may be associated with outcomes to show robustness and
15 improve precision of effect estimates (13). These were age, gender, and number of GP consultations during follow-
16 up. Importantly, for the primary and secondary outcomes we included time to follow-up record, i.e., months between
17 baseline and endline measurement, and prescription of relevant medication: for HbA1c, we adjusted results for
18 diabetes medication prescription; for blood pressure, we adjusted for blood pressure-lowering medication
19 prescription; and for cholesterol and triglycerides levels, we adjusted for lipid-lowering medication prescription, in
20 particular of statins, before endline measure. Estimates for mortality and MACE hospitalization were adjusted for
21 whether patients received any of those three medications prior to their death or first MACE hospitalization.

22
23 As a retrospective study relying on routinely collected data, we expected considerable missingness in outcomes. We
24 assessed whether this gives rise to selection bias by evaluating if missingness in outcomes or time to follow-up,
25 changed discontinuously at the eligibility threshold. We did further sensitivity analyses to show that results are
26 robust when (i) limiting treatment to the NHS DPP only as opposed to all intensive lifestyle counseling treatments,
27 (ii) restricting our sample to patients for whom we observe a follow-up period of at least 24 months, and (iii)
28 restricting our sample to patients with at least three GP consultations in three years before their baseline HbA1c.

29

1 All analyses were limited to complete cases and performed using R statistical software (version 4.1.1). Mean-
2 squared error (MSE) optimal bandwidths were automatically selected by the *rd bwselect* command of the *rdrobust*
3 package (14). Two-sided alpha was set at 0.05.

4

5 **Heterogenous treatment effects**

6 We present stratified, unadjusted regression discontinuity analyses, using local linear regressions with automatically
7 selected optimal bandwidths for each subgroup, in the Supplement. Stratifying variables used in this analysis were
8 gender (Male vs. female), age group (18-39, 40-59, 60-80), ethnicity (Asian, black, mixed or other, white; based on
9 HES APC dataset), socioeconomic status, and practice residency (rural vs. urban). Socioeconomic status is based on
10 the 2015 English Index of Multiple Deprivation composite score, resulting in five quintiles ranging from 1 (= “least
11 deprived”) to 5 (= “most deprived”) and mapped via postcode of residence for patients in English practices that have
12 consented to participate in the linkage scheme.

13

14 **Ethics**

15 The CPRD Independent Scientific Advisory Committee approved the study protocol (20_000052) in accordance
16 with the Declaration of Helsinki.

17

1 **Methods references**

- 2 1. NICE (National Institute for Health and Care Excellence), Type 2 diabetes: prevention in
3 people at high risk. 2012, (available at <https://www.nice.org.uk/guidance/ph38>).
- 4 2. R. E. Hawkes, E. Cameron, S. Cotterill, P. Bower, D. P. French, The NHS Diabetes
5 Prevention Programme: an observational study of service delivery and patient experience.
6 *BMC Health Services Research*. **20**, 1098 (2020).
- 7 3. L. Penn, A. Rodrigues, A. Haste, M. M. Marques, K. Budig, K. Sainsbury, R. Bell, V.
8 Araújo-Soares, M. White, C. Summerbell, E. Goyder, A. Brennan, A. J. Adamson, F. F.
9 Sniehotta, NHS Diabetes Prevention Programme in England: formative evaluation of the
10 programme in early phase implementation. *BMJ Open*. **8**, e019467 (2018).
- 11 4. J. Valabhji, E. Barron, D. Bradley, C. Bakhai, J. Fagg, S. O’Neill, B. Young, N.
12 Wareham, K. Khunti, S. Jebb, J. Smith, Early Outcomes From the English National Health
13 Service Diabetes Prevention Programme. *Diabetes Care*. **43**, 152–160 (2020).
- 14 5. A. Wolf, D. Dedman, J. Campbell, H. Booth, D. Lunn, J. Chapman, P. Myles, Data
15 resource profile: Clinical Practice Research Datalink (CPRD) Aurum. *International*
16 *Journal of Epidemiology*. **48**, 1740-1740g (2019).
- 17 6. A. Herbert, L. Wijlaars, A. Zylbersztejn, D. Cromwell, P. Hardelid, Data Resource
18 Profile: Hospital Episode Statistics Admitted Patient Care (HES APC). *International*
19 *Journal of Epidemiology*. **46**, 1093-1093i (2017).
- 20 7. C. J. Sammon, T. P. Leahy, S. Ramagopalan, Nonindependence of patient data in the
21 clinical practice research datalink: a case study in atrial fibrillation patients. *Journal of*
22 *Comparative Effectiveness Research*. **9**, 395–403 (2020).
- 23 8. NHS Digital, “National Diabetes Audit: Non-Diabetic Hyperglycaemia, 2019-2020,
24 Diabetes Prevention Programme. Main report” (2021), (available at
25 https://files.digital.nhs.uk/31/C59C4B/NDA_NDH_MainReport_2019-20_V1.pdf).
- 26 9. J. Davidson, “Clinical codelist - HES - Major Adverse Cardiovascular Event. [Data
27 Collection]” (London, United Kingdom, 2021), , doi:10.17037/DATA.00002198.
- 28 10. G. Imbens, K. Kalyanaraman, Optimal Bandwidth Choice for the Regression
29 Discontinuity Estimator. *The Review of Economic Studies*. **79**, 933–959 (2012).
- 30 11. D. S. Lee, T. Lemieux, Regression Discontinuity Designs in Economics. *Journal of*
31 *Economic Literature*. **48**, 281–355 (2010).
- 32 12. M. D. Cattaneo, N. Idrobo, R. Titiunik, *A Practical Introduction to Regression*
33 *Discontinuity Designs* (Cambridge University Press, 2019);
34 <https://www.cambridge.org/core/product/identifier/9781108684606/type/element>).
- 35 13. S. Calonico, M. D. Cattaneo, M. H. Farrell, R. Titiunik, Regression Discontinuity Designs
36 Using Covariates. *The Review of Economics and Statistics*. **101**, 442–451 (2019).
- 37 14. S. Calonico, M. D. Cattaneo, M. H. Farrell, R. Titiunik, rdrobust: Robust Data-Driven
38 Statistical Inference in Regression-Discontinuity Designs. R package version 1.0.8,
39 (available at <https://cran.r-project.org/package=rdrobust>).

1 **Acknowledgments:** This study is based on data from the Clinical Practice Research Datalink
2 obtained under license from the UK Medicines and Healthcare products Regulatory Agency. The
3 data is provided by patients and collected by the NHS as part of their care and support. The
4 interpretation and conclusions contained in this study are those of the authors alone.

5
6 **Funding:**

7 National Institute of Allergy and Infectious Diseases (1DP2AI171011; PG)

8 Chan Zuckerberg Biohub investigator award (PG)

9 Alexander von Humboldt Foundation Alexander von Humboldt Professor award (TB)

10 Ministry of Science, Research, and the Arts Baden-Wuerttemberg (MWK), Germany,
11 German Research Foundation (DFG), the state of Baden-Wuerttemberg, Germany, and the
12 German Research Foundation (DFG) grant INST 35/1314-1 FUGG (as part of data storage
13 and computing resources)

14
15 **Author contributions:**

16 Conceptualization: JL, CB, AJ, JD, SV, PG

17 Data curation: JL, MX

18 Formal analysis: JL, CB, MX

19 Visualization: JL, PG

20 Funding acquisition: TB, SV, PG

21 Project administration: JL, TB, SV, PG

22 Supervision: CB, TB, SV, PG

23 Writing – original draft: JL, PG

24 Writing – review & editing: JL, CB, MX, JD, AJ, SV, TB, PG

25
26 **Competing interests:** The authors declare no competing interests.

27
28 **Additional Information:** Supplementary Information is available for this paper.

29 Correspondence and requests for materials should be addressed to Pascal Geldsetzer, Email:
30 pgeldsetzer@stanford.edu.

31