

1 **Brain morphometry is not associated with non-motor outcomes**
2 **after deep brain stimulation in Parkinson's disease**

3 Philipp Alexander Loehrer, MD¹, Wibke Schumacher, MD^{2,3}, Stefanie T. Jost, PhD², Monty
4 Silverdale, MD⁴, Jan Niklas Petry-Schmelzer, MD², Anna Sauerbier, MD/PhD^{2,5}, Alexandra
5 Gronostay, MD², Veerle Visser-Vandewalle, MD/PhD⁶, Gereon R. Fink, MD^{2,7}, Julian Evans,
6 MD⁸, Max Krause, MD^{2,9}, Alexandra Rizos, PhD⁵, Angelo Antonini, MD¹⁰, Keyoumars
7 Ashkan, MD¹¹, Pablo Martinez-Martin, MD/PhD¹², Christian Gaser, PhD^{13,14,15,16}, K. Ray
8 Chaudhuri, MD/PhD^{5,17}, Lars Timmermann, MD¹, Carlos Baldermann, MD^{2*}, Haidar S.
9 Dafsari, MD^{2*}

10 On behalf of EUROPAR and the International Parkinson and Movement Disorders Society
11 Non-Motor Parkinson's Disease Study Group.

12

13 ¹Department of Neurology, Philipps-University Marburg, Marburg, Germany

14 ²University of Cologne, Faculty of Medicine and University Hospital Cologne, Department of
15 Neurology, Cologne, Germany

16 ³University of Cologne, Faculty of Medicine and University Hospital Cologne, Department of
17 Pediatrics, Cologne, Germany

18 ⁴Department of Neurology and Neurosurgery, Salford Royal Foundation Thrust, Greater
19 Manchester, United Kingdom

20 ⁵National Parkinson Foundation Centre of Excellence, King's College Hospital, London,
21 United Kingdom

22 ⁶University of Cologne, Faculty of Medicine and University Hospital Cologne, Department of
23 Stereotactic and Functional Neurosurgery, Cologne, Germany

24 ⁷Cognitive Neuroscience, Institute of Neuroscience and Medicine (INM-3), Research Center
25 Jülich, Jülich, Germany

26 ⁸Department of Neurology and Neurosurgery, Salford Royal NHS Foundation Trust,
27 Manchester Academic Health Science Centre, University of Manchester, Greater Manchester,
28 United Kingdom

29 ⁹University of Cologne, Faculty of Medicine and University Hospital Cologne, Department of
30 Radiation Oncology, Cyberknife Center, Cologne, Germany

31 ¹⁰Department of Neuroscience, University of Padua, Padua, Italy

32 ¹¹Department of Neurosurgery, King's College Hospital, London, United Kingdom

33 ¹²Center for Networked Biomedical Research in Neurodegenerative Diseases (CIBERNED),
34 Carlos III Institute of Health. Madrid, Spain.

1 ¹³Department of Psychiatry and Psychotherapy, Jena University Hospital, Jena, Germany.
2 Department of Neurology, Jena University Hospital, Jena, Germany

3 ¹⁴Department of Neurology, Jena University Hospital, Jena, Germany

4 ¹⁵German Center for Mental Health (DZPG), Site Jena-Magdeburg-Halle

5 ¹⁶Center for Intervention and Research on adaptive and maladaptive brain Circuits underlying
6 mental health (C-I-R-C), Jena-Magdeburg-Halle

7 ¹⁷The Maurice Wohl Clinical Neuroscience Institute, King's College London, London, United
8 Kingdom

9 *Contributed equally

10

11 Corresponding authors:

12 Philipp Loehrer

Haidar S. Dafsari

13 Department of Neurology

Department of Neurology

14 Philipps-University Marburg

University Hospital Cologne

15 Baldinger Str.

Kepenerstr. 62

16 35043 Marburg, Germany

50937 Cologne, Germany

17 Tel: +49 6421 5866419

Tel.: +49 221 478 37445

18 Email: loehrer@staff.uni-marburg.de

Email: haidar.dafsari@uk-koeln.de

19

20 **Number of words in the abstract:** 145

21 **Number of words in the manuscript:** 2302

22 **Number of tables and figures:** 4

23 **Number of References:** 41

24 **Character count title:** 111

25 **Keywords:** non-motor symptoms, Parkinson's disease, deep brain stimulation, voxel-based
26 morphometry

27

28

1 **Abstract**

2 Deep brain stimulation of the subthalamic nucleus (STN-DBS) is an established therapy in
3 advanced Parkinson's disease (PD). Motor and non-motor outcomes, however, show
4 considerable inter-individual variability. Morphometry-based metrics have recently received
5 increasing attention to predict treatment effects. As evidence for the prediction of non-motor
6 outcomes is limited, we sought to investigate the association between metrics of voxel-based
7 morphometry and short-term non-motor outcomes following STN-DBS in this prospective
8 open-label study. 49 PD patients underwent structural MRI and a comprehensive clinical
9 assessment at preoperative baseline and 6-month follow-up. Voxel-based morphometry was
10 used to assess associations between cerebral volume and non-motor outcomes corrected for
11 multiple comparisons using a permutation-based approach. We replicated existing results
12 associating atrophy of the superior frontal cortex with subpar motor outcomes. Non-motor
13 outcomes, however, were not associated with morphometric features, limiting its use as a
14 marker to inform patient selection and holistic preoperative counselling.

15

1 **Introduction**

2 Deep brain stimulation (DBS) of the subthalamic nucleus (STN) is an established therapy for
3 the treatment of motor and non-motor symptoms in advanced Parkinson's disease (PD).¹⁻³
4 Despite its well-established effects at the group level, individual symptom relief varies
5 significantly, complicating preoperative patient selection and counselling.⁴ To predict
6 outcomes and support preoperative management, neuroimaging-based biomarkers using
7 advanced imaging technologies, such as tractography and functional MRI, have proven
8 useful.^{4,5} Their widespread clinical application, however, is limited by the need for additional
9 and sometimes time-consuming scanning protocols and the expertise to analyse and translate
10 their results.⁶ Therefore, the association of postoperative outcomes with metrics based on T1-
11 weighted sequences obtained in clinical routine during surgical planning has been
12 investigated. Particularly, analyses focussing on morphometric tissue features, such as voxel-
13 based morphometry (VBM), have lately received increasing attention to monitor clinical
14 progression and treatment effects.⁶ In a recent meta-analysis including 1253 patients enrolled
15 in 24 studies, Wang and colleagues identified specific areas whose morphometric features
16 were associated with outcomes following STN-DBS.⁶ Here, atrophy of the motor cortex and
17 thalamus was associated with below-average improvement in motor symptoms. On the other
18 hand, outcome prediction of non-motor symptoms has received little attention, with studies
19 focusing on cognitive decline and immediate psychiatric alterations such as postoperative
20 confusion, delirium, and impulsivity.⁶ Poor outcomes in verbal memory were associated with
21 hippocampal atrophy at baseline, while immediate psychiatric complications were related to
22 caudal middle frontal cortex atrophy.⁶ As STN-DBS is associated with beneficial short-term
23 outcomes in a range of non-motor symptoms such as sleep/fatigue, attention/memory, and
24 mood/apathy,^{7,8} in the present study, we sought to explore the association between a large
25 spectrum of non-motor symptoms and volumetric properties.

1 **Results**

2 **Clinical outcomes**

3 Forty-nine patients with PD (31 males, mean age 64.5 ± 8.2 years) were enrolled. At the six
4 month follow-up, the following scales improved: NMSS total score ($p=.006$, Cohen's $d=.46$),
5 PDQ-8 SI ($p<.001$, Cohen's $d=.52$), UPDRS III ($p=.023$, Cohen's $d=.45$), SCOPA-M
6 activities of daily living ($p<.001$, Cohen's $d=.56$), SCOPA-M motor complications ($p<.001$,
7 Cohen's $d=.85$), and LEDD ($p<.001$, Cohen's $d=1.06$). Analysis of NMSS domains revealed
8 beneficial effects of STN-DBS on sleep/fatigue ($p=.003$, Cohen's $d=.55$), perceptual
9 problems/hallucinations ($p=.023$, Cohen's $d=.39$), urinary symptoms ($p=.023$, Cohen's
10 $d=.35$), and miscellaneous symptoms ($p<.001$, Cohen's $d=.68$). Longitudinal changes of
11 clinical outcomes are reported in Table 1.

12

13 **Association of morphometry surrogates and postoperative motor symptom** 14 **change**

15 A multiple regression analysis assessed the relationship between motor response to STN-DBS
16 and morphometry surrogates. Following a threshold-free cluster enhancement (TFCE)
17 approach to correct for multiple comparisons, a cluster within the bilateral superior frontal
18 cortex showed a positive association with changes in postoperative motor function.

19

20 **Association of morphometry surrogates and postoperative non-motor symptom** 21 **change**

22 No significant associations were observed between morphometry surrogates and change
23 scores of NMSS-T and NMSS-domains, following a TFCE approach to correct for multiple
24 comparisons.

25

1 **Discussion**

2 In the present study, we investigated the association between brain morphometric features and
3 changes in clinical outcomes following STN-DBS in PD. We replicated findings that impaired
4 integrity of the frontal cortex is associated with subpar improvement in motor symptoms
5 following STN-DBS. In contrast, changes in non-motor symptoms were not associated with
6 features of brain morphometry.

7 Employing a whole brain voxel-based morphometry analysis, we identified an association
8 between reduced volume of the bilateral superior frontal cortex and poor motor outcomes
9 after neurostimulation in PD. This finding is consistent with previous studies demonstrating
10 an association between poor motor outcomes and reduced cortical thickness and a diminished
11 volume of this region.^{9,10} Importantly, the superior frontal cortex comprises the critical
12 structures of the motor network for movement generation and control.^{9,11,12} Information
13 processing within this network is altered in PD and modulated by dopaminergic replacement
14 therapy and DBS, resulting in improved motor function.^{13,14} In STN-DBS, this modulation is
15 in part elicited by antidromic conveyance of stimulation signals via the hyperdirect pathway
16 that directly links the subthalamic nucleus to structures of the motor network.¹⁵ Consequently,
17 integrity of the frontal cortex seems crucial for STN-DBS to exert its effects and might serve
18 as a marker to predict motor response after DBS surgery. In future studies, larger sample sizes
19 in multicentre cohorts are needed to define patient-specific thresholds and thus implement
20 bilateral superior frontal cortex volume as a biomarker for individual outcome prediction.

21 Contrary to our expectations, there were no associations between morphometric features and
22 postoperative changes in non-motor symptoms. The effect sizes of postoperative motor and
23 non-motor symptom change were similar and we observed the aforementioned association
24 between motor symptoms and brain morphometric features. Therefore, we reason that our
25 findings for non-motor symptoms genuinely reflect the absence of an effect rather than being

1 attributed to low sensitivity. As non-motor symptoms constitute a heterogeneous group of
2 symptoms,^{16,17} several aspects have to be considered when interpreting the present findings.
3 First, this study investigated the brain areas associated with postoperative changes in a wide
4 range of non-motor symptoms assessed by the NMSS total and its domain scores. Previous
5 studies found limited evidence of an association between cortical atrophy and postoperative
6 changes in various cognitive functions.¹⁸ Lower hippocampal volume, however, has been
7 associated with a postoperative decline in verbal memory.^{18,19} In the present study, lower
8 hippocampal volumes were associated with less postoperative changes in the attention and
9 memory domains, although these results did not survive TFCE correction. The lack of
10 significant results in this domain might be attributed to the presumably low sensitivity of the
11 NMSS to detect subtle changes in a single cognitive domain. The NMSS is a clinician-rated
12 scale investigating a wide range of NMS across nine domains whereby symptoms are rated
13 according to severity and frequency. Thus, it is not intended to evaluate specific cognitive
14 domains but global cognition and to assess the progress or treatment response of a wide range
15 of non-motor symptoms.²⁰

16 Second, the present study investigated the association between brain morphometry and short-
17 term non-motor outcomes, not the development or worsening of pre-existing non-motor
18 symptoms, which may result from progression of Parkinson's disease rather than from
19 neurostimulation. In this context, Aybek and colleagues identified hippocampal volume as a
20 marker to predict postsurgical conversion to dementia in a long-term, i.e., 25 months, follow-
21 up.²¹ Patients with Parkinson's disease dementia had smaller preoperative hippocampal
22 volumes than patients without conversion. The authors concluded that hippocampal atrophy is
23 a potential clinical marker to predict postoperative conversion to dementia, but that the
24 postsurgical development is due to the disease progression rather than the procedure itself.²¹
25 As the present study investigated short-term outcomes only, further studies investigating the
26 relationship between brain morphometry and long-term non-motor outcomes are needed.

1 Third, it is now widely accepted that the DBS effects are mediated via mechanisms on
2 multiple levels, encompassing the micro- (e.g., local spiking activity), meso- (e.g., local field
3 potentials), and macro-scale (e.g., interregional networks).²² In particular, network effects of
4 DBS have received increasing attention in recent years, and it has been postulated that
5 integrating a patient's connectome into surgical planning could facilitate personalised DBS
6 therapy.⁴ Non-motor outcomes following STN-DBS depend on the location of
7 neurostimulation.²² Furthermore, previous studies have associated the stimulation of specific
8 fibre tracts with postoperative outcomes such as depression and impulsivity.^{23,24} In summary,
9 neuromodulation of subcortical brain regions and connected functional brain networks is
10 associated with non-motor outcomes, whereas cortical atrophy evident in routine MRI scans is
11 not. The clinical implication of our study is that atrophy in the prefrontal cortex should be
12 considered as an MRI biomarker of subpar motor outcome of STN-DBS, whereas cortical
13 atrophy may not indicate worse non-motor outcomes. Compared to these metrics of
14 morphometry based on routine MRI examinations, it is conceivable that more advanced
15 imaging techniques, e.g., markers of cerebral microstructure, such as neurite density, and
16 connectivity measures are more sensitive to map non-motor treatment effects.²⁵

17

18 **Limitations**

19 First, despite being one of the largest cohorts of its kind, the sample size is relatively small.
20 Nonetheless, it is unlikely that our sample was underpowered because the effect size of
21 postoperative changes of motor and non-motor symptoms was comparable (Cohen's d : .45,
22 respectively .46) and we observed an association between metrics of morphometry and motor,
23 but not non-motor outcomes. Second, we did not employ scales that specifically measure
24 certain motor and non-motor symptoms, such as the Bain and Findley tremor scale for tremor,
25 the Parkinson's disease Sleep Scale (PDSS) for sleep, or the Montreal Cognitive Assessment
26 (MoCA) for cognitive symptoms as we were interested in the association between brain

1 morphometry and global motor and non-motor symptom burden. Therefore, we chose the
2 UPDRS-III and the NMSS-T, which represent composite scores for motor and non-motor
3 symptom severity. Furthermore, we wanted to ensure consistency with prior studies
4 employing the UPDRS-III as an outcome parameter. Third, the exact scanning parameters
5 (e.g., repetition-time (TR) and echo-time (TE)) differed slightly across the sample. In a
6 previous study, however, our group demonstrated that results remained consistent even after
7 integrating scanning parameters into the regression analysis.²⁶

8

9 **Conclusion**

10 Our study supports the importance of intact superior frontal cortex integrity as a predictor for
11 motor outcomes in PD patients undergoing STN-DBS. Despite several advantages, including
12 being based on scans implemented as a standard preoperative procedure, the short scanning
13 time, and established pipelines in analysing and interpreting findings, our results indicate that
14 the use of VBM as a measure to inform the patient selection and preoperative counselling is
15 limited to motor effects and does not extend to non-motor effects of STN-DBS.

16

17 **Methods**

18 **Participants**

19 Patients were enrolled in this prospective, observational, ongoing study upon written informed
20 consent in a single centre (University Hospital Cologne). Clinical diagnosis of PD was based
21 on the UK Brain Bank Criteria, and indication for DBS surgery was established according to
22 international guidelines.^{27,28} Exclusion criteria comprised pathological MR imaging, clinically
23 relevant cognitive impairments, and impaired visual and auditory function. The study was

1 carried out following the Declaration of Helsinki and approved by the University of Cologne
2 ethics committee (study no.: 12-145; German Clinical Trials Register: DRKS00006735).

3

4 **Clinical Assessment**

5 Clinical assessments were conducted at the preoperative baseline in the ON-medication state
6 (MedON) and six months after DBS surgery in the ON-medication/ON-stimulation state
7 (MedON/StimON). Standardised case report forms were used to collect demographic and
8 clinical data on both study visits, including a comprehensive neuropsychological assessment
9 which comprised the following scales:

10

11 (1) The Non-motor Symptoms Scale (NMSS) is a scale evaluated by clinicians that
12 consists of 30 items, which assess nine domains of non-motor symptoms, including (1)
13 cardiovascular, (2) sleep/fatigue, (3) mood/apathy, (4) perceptual
14 problems/hallucinations, (5) attention/memory, (6) gastrointestinal tract, (7) urinary,
15 (8) sexual function, and (9) miscellaneous. The miscellaneous category includes
16 questions regarding pain, the ability to smell/taste, weight change, and excessive
17 sweating. The NMSS has been frequently used in DBS studies for PD.²⁹⁻³¹ The score
18 on this scale ranges from 0, indicating no impairment, to 360, indicating maximum
19 impairment, while the symptoms are evaluated over the past four weeks.²⁰

20 (2) The PD Questionnaire (PDQ)-8 is a self-reported short form of the PDQ-39 that
21 assesses eight dimensions of quality of life (QoL) in patients with PD. The PDQ-8 has
22 been frequently used in DBS studies for PD.³²⁻³⁴ The scale is reported as a summary
23 index (SI) and ranges from 0, indicating no impairment, to 100, indicating maximum
24 impairment.^{2,35,36}

1 (3) The Unified Parkinson's Disease Rating Scale part III (UPDRS-III) is a clinician rated
2 scale evaluating motor symptom severity. The UPDRS-III ranges from 0 (no motor
3 impairment) to 108 (maximum motor impairment).{Fahn, 1987 #602}

4 (4) The Scales for Outcomes in PD – Motor Function (SCOPA-M) is a scale evaluated by
5 clinicians that assesses different dimensions of function in PD patients, including
6 activities of daily living and motor complications. The subscale scores range from 0
7 (no impairment) to 21 for activities of daily living and 12 for motor complications.³⁷

8 The levodopa equivalent daily dose (LEDD) was calculated based on the method described by
9 Jost et al.³⁸ Demographic and clinical characteristics are outlined in Table 1.

10

11 **MRI Data Acquisition**

12 MRI acquisitions were performed on a 3 T MRI system (Ingenia 3.0T, Philips Healthcare) in
13 a single centre (Cologne). Each PD patient in the MedON underwent a 3D T1-weighted
14 Magnetization Prepared - Rapid Gradient Echo sequence (MPRAGE) at baseline.

15 At the time of image acquisition, images were investigated to be free of motion or ghosting
16 and high frequency or wrap-around artefacts.

17

18 **Image Processing**

19 Voxel-based morphometry was performed within the Computational Anatomy Toolbox
20 (CAT) analysis suite (CAT12.8.2, University Hospital Jena, Jena, Germany)³⁹ implemented in
21 Statistical Parametric Mapping 12 (SPM12, Wellcome Department of Cognitive Neurology,
22 London, United Kingdom). All steps were conducted in MATLAB R2022a (The MathWorks
23 Inc., Natick, MA, USA), as reported previously by Jergas et al.²⁶ In short, processing included
24 spatial registration to a template brain, segmentation into cortical grey matter, white matter,
25 and cerebrospinal fluid, calculation of total intracranial volume (TIV), and empirical quality

1 control (QC) using default parameters. QC was performed within the QC framework of
2 CAT12 with scans not rating lower than B-. Finally, data smoothing was performed using an
3 8 mm full-width half-maximum isotropic Gaussian kernel.

4

5 **Statistical analysis**

6 Statistical analysis of clinical outcomes was performed using MATLAB R2018b. We
7 employed the Shapiro-Wilk test to assess the assumption of normality. Subsequently,
8 Wilcoxon signed-rank- or t-tests, when parametric test criteria were fulfilled, were employed
9 to analyse changes between baseline and 6-month follow-up. The Benjamini-Hochberg
10 method was used to control the false discovery rate and effect sizes were calculated according
11 to Cohen.^{40,41} Reported p-values are two-sided and were accepted as significant where $p < .05$.
12 Statistical voxelwise analysis of image data was performed using SPM12. Here, clinical
13 outcomes were represented as change scores in UPDRS-III, NMSS-T, and NMSS-Domains
14 and calculated according to the following equation:

$$Scale_{baseline} - Scale_{follow-up}$$

15 Associations between surrogates of brain morphometry and motor and non-motor outcomes
16 were assessed using a multiple regression analysis with age, sex, and total intracranial volume
17 as covariates. A threshold-free cluster enhancement (TFCE) was applied to correct for
18 multiple comparisons as implemented in the TFCE Toolbox. Results were accepted as
19 significant where family-wise error corrected $p < .05$.

20

21 **Acknowledgement**

22 The authors thank the participants for their active engagement in this study.

23

1 **Data and Code Availability**

2 The data supporting this study's findings are available on reasonable request from the
3 corresponding authors (PAL, HSD). The data are not publicly available due to privacy or
4 ethical restrictions. All tools used to analyse MRI data are based on CAT12 ([https://neuro-](https://neuro-jena.github.io/cat/)
5 [jena.github.io/cat/](https://neuro-jena.github.io/cat/)) and SPM12 (<http://www.fil.ion.ucl.ac.uk/spm>).

6

7 **Contributorship**

8 PAL: study concept and design, data acquisition, data analysis, drafting of the manuscript

9 WS: data acquisition, critical revision of the manuscript

10 STJ: data acquisition, critical revision of the manuscript

11 MS: critical revision of the manuscript

12 JNPS: data acquisition, critical revision of the manuscript

13 AS: data acquisition, critical revision of the manuscript

14 AG: data acquisition, critical revision of the manuscript

15 VVV: data acquisition, surgical intervention, critical revision of the manuscript

16 GRF: critical revision of the manuscript

17 JE: critical revision of the manuscript

18 MK: data acquisition, critical revision of the manuscript

19 AR: critical revision of the manuscript

20 AA: critical revision of the manuscript

21 KA: critical revision of the manuscript

22 PMM: critical revision of the manuscript

23 CG: critical revision of the manuscript

24 KRC: critical revision of the manuscript

25 LT: study concept and design, critical revision of the manuscript

1 JCB: study concept and design, data acquisition, data analysis, drafting of the manuscript

2 HSD: study concept and design, data acquisition, data analysis, drafting of the manuscript

3

4 **Financial disclosure/Conflicts of Interest**

5 PAL was supported by the SUCCESS-Program of the Philipps-University of Marburg, the
6 ‘Stiftung zur Förderung junger Neurowissenschaftler’, and the Prof. Klaus Thiemann
7 Foundation in the German Society of Neurology.

8 WS was supported by the Koeln Fortune Program/Faculty of Medicine, University of Cologne
9 and reports no financial relationships with commercial interests.

10 STJ was funded by the Prof. Klaus Thiemann Foundation and the Brandau-Laibach-
11 Foundation, outside of the submitted work.

12 MS has received honoraria from Bial, Britannia and Medtronic.

13 JNPS funded by the Cologne Clinician Scientist Program (CCSP)/Faculty of Medicine/
14 University of Cologne; and by the German Research Foundation (DFG, FI 773/15-464 1).

15 AS reports no financial disclosures.

16 AG reports no financial disclosures.

17 VVV reports compensation for contributions to advisory boards and congresses for
18 Medtronic, Boston Scientific, and Livanova.

19 GRF serves as an editorial board member of Cortex, Neurological Research and Practice,
20 NeuroImage: Clinical, Zeitschrift für Neuropsychologie, DGNeurologie, and Info Neurologie
21 & Psychiatrie; receives royalties from the publication of the books Funktionelle MRT in
22 Psychiatrie und Neurologie, Neurologische Differentialdiagnose, and SOP Neurologie;
23 receives royalties from the publication of the neuropsychological tests KAS and Köpps;
24 received honoraria for speaking engagements from Deutsche Gesellschaft für Neurologie
25 (DGN) and Forum für medizinische Fortbildung FomF GmbH.

1 JE reports no financial disclosures.

2 MK was funded by the KoelnFortune program of the Medical Faculty of the University of
3 Cologne and reports no financial relationships with commercial interests.

4 AR received funding from the National Institute for Health and Care Research (NIHR), the
5 Clinical Research Network (CRN) South London, and grant funding from the International
6 Parkinson and Movement Disorders Society (MDS).

7 AA received compensation for consultancy and speaker-related activities from UCB,
8 Boehringer Ingelheim, Ever Pharma, General Electric, Britannia, AbbVie, Kyowa Kirin,
9 Zambon, Bial, Theravance Biopharma, Jazz Pharmaceuticals, Roche, Medscape. He receives
10 research support from Bial, Lundbeck, Roche, Angelini Pharmaceuticals, Horizon 2020 Grant
11 825785, Horizon 2020 Grant 101016902, Ministry of Education University and Research
12 (MIUR) Grant ARS01_01081, Cariparo Foundation, Movement Disorders Society for NMS
13 Scale validation. He serves as consultant for Boehringer–Ingelheim for legal cases on
14 pathological gambling.

15 KA has received honoraria for educational meetings, travel and consultancy from Medtronic,
16 St. Jude Medical and Boston Scientific.

17 PMM received honoraria from the International Parkinson and Movement Disorder Society
18 (IPMDS) for management of the Clinical Outcome Assessment Program.

19 CG reports no financial disclosures.

20 KRC received grants (IIT) from Britannia Pharmaceuticals, AbbVie, UCB, GKC, EU Horizon
21 2020, Parkinson’s UK, NIHR, Parkinson’s Foundation, Wellcome Trust, Kirby Laing
22 Foundation, MRC; royalties or licenses from Oxford (book), Cambridge publishers (book),
23 MAPI institute (KPPS, PDSS 2); consulting fees, support for attending meetings or travel, and
24 participated on data safety monitoring board or advisory board for AbbVie, UCB, GKC, Bial,

1 Cynapsus, Lobsor, Stada, Zambon, Profile Pharma, Synovion, Roche, Therevance, Scion,
2 Britannia, Acadia, 4D Pharma, and Medtronic; and served as a committee chair for MDS
3 (unpaid) and EAN (unpaid).
4 LT received payments as a consultant for Medtronic Inc. and Boston Scientific and received
5 honoraria as a speaker on symposia sponsored by Bial, Zambon Pharma, UCB Schwarz
6 Pharma, Desitin Pharma, Medtronic, Boston Scientific, and Abbott. The institution of LT, not
7 LT personally, received funding by the German Research Foundation, the German Ministry of
8 Education and Research, and Deutsche Parkinson Vereinigung.
9 JCB is funded by the Else Kroener-Fresenius-Stiftung (2022_EKES.23) and receives funding
10 by the German Research Foundation (Project ID 431549029-C07).
11 HSD was funded by the EU Joint Programme – Neurodegenerative Disease Research (JPND),
12 the Prof. Klaus Thiemann Foundation in the German Society of Neurology, the Felgenhauer
13 Foundation, the KoelnFortune program of the Medical Faculty of the University of Cologne
14 and has received honoraria by Everpharma, Kyowa Kirin, Bial, Oruen, and Stadapharm.
15

16 **References**

- 17 1 Jost, S. T. *et al.* Subthalamic Stimulation Improves Quality of Sleep in Parkinson Disease: A 36-
18 Month Controlled Study. *J Parkinsons Dis* **11**, 323-335, doi:10.3233/JPD-202278 (2021).
19 2 Jost, S. T. *et al.* A prospective, controlled study of non-motor effects of subthalamic
20 stimulation in Parkinson's disease: results at the 36-month follow-up. *J Neurol Neurosurg*
21 *Psychiatry* **91**, 687-694, doi:10.1136/jnnp-2019-322614 (2020).
22 3 Sauerbier, A. *et al.* The New Satisfaction with Life and Treatment Scale (SLTS-7) in Patients
23 with Parkinson's Disease. *J Parkinsons Dis*, doi:10.3233/jpd-212823 (2021).
24 4 Hollunder, B. *et al.* Toward personalized medicine in connectomic deep brain stimulation.
25 *Prog Neurobiol* **210**, 102211, doi:10.1016/j.pneurobio.2021.102211 (2022).
26 5 Loehrer, P. A. *et al.* Microstructural alterations predict impaired bimanual control in
27 Parkinson's disease. *Brain communications* **4**, fcac137, doi:10.1093/braincomms/fcac137
28 (2022).
29 6 Wang, F. *et al.* A systematic review of brain morphometry related to deep brain stimulation
30 outcome in Parkinson's disease. *NPJ Parkinson's disease* **8**, 130, doi:10.1038/s41531-022-
31 00403-x (2022).
32 7 Leta, V. *et al.* Personalised Advanced Therapies in Parkinson's Disease: The Role of Non-
33 Motor Symptoms Profile. *Journal of Personalized Medicine* **11**, 773 (2021).

- 1 8 Lazcano-Ocampo, C. *et al.* Evaluation of the effect of bilateral subthalamic nucleus deep
2 brain stimulation on fatigue in Parkinson's Disease as measured by the non-motor symptoms
3 scale. *British journal of neurosurgery*, 1-4, doi:10.1080/02688697.2021.1961681 (2021).
- 4 9 Muthuraman, M. *et al.* Effects of DBS in parkinsonian patients depend on the structural
5 integrity of frontal cortex. *Scientific reports* **7**, 43571, doi:10.1038/srep43571 (2017).
- 6 10 Chen, Y. *et al.* Predict initial subthalamic nucleus stimulation outcome in Parkinson's disease
7 with brain morphology. *CNS Neuroscience & Therapeutics* **28**, 667-676,
8 doi:<https://doi.org/10.1111/cns.13797> (2022).
- 9 11 Loehrer, P. A. *et al.* Ageing changes effective connectivity of motor networks during bimanual
10 finger coordination. *NeuroImage* **143**, 325-342, doi:10.1016/j.neuroimage.2016.09.014
11 (2016).
- 12 12 Loehrer, P. A. *et al.* Increased prefrontal top-down control in older adults predicts motor
13 performance and age-group association. *NeuroImage* **240**, 118383,
14 doi:10.1016/j.neuroimage.2021.118383 (2021).
- 15 13 Nettersheim, F. S. *et al.* Dopamine substitution alters effective connectivity of cortical
16 prefrontal, premotor, and motor regions during complex bimanual finger movements in
17 Parkinson's disease. *NeuroImage* **190**, 118-132, doi:10.1016/j.neuroimage.2018.04.030
18 (2019).
- 19 14 de Hemptinne, C. *et al.* Exaggerated phase-amplitude coupling in the primary motor cortex in
20 Parkinson disease. *Proceedings of the National Academy of Sciences of the United States of*
21 *America* **110**, 4780-4785, doi:10.1073/pnas.1214546110 (2013).
- 22 15 Li, Q., Qian, Z.-M., Arbuthnott, G. W., Ke, Y. & Yung, W.-H. Cortical Effects of Deep Brain
23 Stimulation: Implications for Pathogenesis and Treatment of Parkinson Disease. *JAMA*
24 *Neurology* **71**, 100-103, doi:10.1001/jamaneurol.2013.4221 (2014).
- 25 16 Chaudhuri, K. R., Healy, D. G. & Schapira, A. H. Non-motor symptoms of Parkinson's disease:
26 diagnosis and management. *The Lancet. Neurology* **5**, 235-245, doi:10.1016/s1474-
27 4422(06)70373-8 (2006).
- 28 17 Qamar, M. A. *et al.* Presynaptic dopaminergic terminal imaging and non-motor symptoms
29 assessment of Parkinson's disease: evidence for dopaminergic basis? *NPJ Parkinson's disease*
30 **3**, 5, doi:10.1038/s41531-016-0006-9 (2017).
- 31 18 Weinkle, L. J. *et al.* Association of MRI Measurements with Cognitive Outcomes After STN-
32 DBS in Parkinson's Disease. *Mov Disord Clin Pract* **5**, 417-426, doi:10.1002/mdc3.12643
33 (2018).
- 34 19 Geevarghese, R. *et al.* Verbal Memory Decline following DBS for Parkinson's Disease:
35 Structural Volumetric MRI Relationships. *PLoS one* **11**, e0160583,
36 doi:10.1371/journal.pone.0160583 (2016).
- 37 20 Chaudhuri, K. R. *et al.* The metric properties of a novel non-motor symptoms scale for
38 Parkinson's disease: Results from an international pilot study. *Movement disorders : official*
39 *journal of the Movement Disorder Society* **22**, 1901-1911, doi:10.1002/mds.21596 (2007).
- 40 21 Aybek, S. *et al.* Hippocampal atrophy predicts conversion to dementia after STN-DBS in
41 Parkinson's disease. *Parkinsonism Relat Disord* **15**, 521-524,
42 doi:10.1016/j.parkreldis.2009.01.003 (2009).
- 43 22 Petry-Schmelzer, J. N. *et al.* Non-motor outcomes depend on location of neurostimulation in
44 Parkinson's disease. *Brain* **142**, 3592-3604, doi:10.1093/brain/awz285 (2019).
- 45 23 Irmen, F. *et al.* Left Prefrontal Connectivity Links Subthalamic Stimulation with Depressive
46 Symptoms. *Annals of neurology* **87**, 962-975, doi:10.1002/ana.25734 (2020).
- 47 24 Mosley, P. E. *et al.* The structural connectivity of subthalamic deep brain stimulation
48 correlates with impulsivity in Parkinson's disease. *Brain : a journal of neurology* **143**, 2235-
49 2254, doi:10.1093/brain/awaa148 (2020).
- 50 25 Loehrer, P. A. *et al.* Microstructure predicts non-motor outcomes following Deep Brain
51 Stimulation in Parkinson's disease. *medRxiv*, 2023.2004.2025.23289088,
52 doi:10.1101/2023.04.25.23289088 (2023).

- 1 26 Jergas, H. *et al.* Brain Morphometry Associated With Response to Levodopa and Deep Brain
2 Stimulation in Parkinson Disease. *Neuromodulation : journal of the International*
3 *Neuromodulation Society* **26**, 340-347, doi:10.1016/j.neurom.2022.01.013 (2023).
- 4 27 Hughes, A. J., Daniel, S. E., Kilford, L. & Lees, A. J. Accuracy of clinical diagnosis of idiopathic
5 Parkinson's disease: a clinico-pathological study of 100 cases. *Journal of neurology,*
6 *neurosurgery, and psychiatry* **55**, 181-184, doi:10.1136/jnnp.55.3.181 (1992).
- 7 28 Reichmann, H. Die neue S3-Leitlinie zum Parkinson-Syndrom der Deutschen Gesellschaft f??r
8 Neurologie. *Psychopharmakotherapie : PPT.* **23**, 120-124 (2016).
- 9 29 Dafsari, H. S. *et al.* Beneficial nonmotor effects of subthalamic and pallidal neurostimulation
10 in Parkinson's disease. *Brain Stimul* **13**, 1697-1705, doi:10.1016/j.brs.2020.09.019 (2020).
- 11 30 Jost, S. T. *et al.* Non-motor effects of deep brain stimulation in Parkinson's disease motor
12 subtypes. *Parkinsonism Relat Disord*, 105318, doi:10.1016/j.parkreldis.2023.105318 (2023).
- 13 31 Jost, S. T. *et al.* Gender gap in deep brain stimulation for Parkinson's disease. *NPJ Parkinson's*
14 *disease* **8**, 47, doi:10.1038/s41531-022-00305-y (2022).
- 15 32 Dafsari, H. S. *et al.* Beneficial effect of 24-month bilateral subthalamic stimulation on quality
16 of sleep in Parkinson's disease. *J Neurol* **267**, 1830-1841, doi:10.1007/s00415-020-09743-1
17 (2020).
- 18 33 Dafsari, H. S. *et al.* Beneficial effects of bilateral subthalamic stimulation on alexithymia in
19 Parkinson's disease. *European journal of neurology* **26**, 222-e217, doi:10.1111/ene.13773
20 (2019).
- 21 34 Dafsari, H. S. *et al.* Subthalamic Stimulation Improves Quality of Life of Patients Aged 61
22 Years or Older With Short Duration of Parkinson's Disease. *Neuromodulation : journal of the*
23 *International Neuromodulation Society* **21**, 532-540, doi:10.1111/ner.12740 (2018).
- 24 35 Jost, S. T. *et al.* Non-motor predictors of 36-month quality of life after subthalamic
25 stimulation in Parkinson disease. *NPJ Parkinsons Dis* **7**, 48, doi:10.1038/s41531-021-00174-x
26 (2021).
- 27 36 Sauerbier, A. *et al.* Predictors of short-term impulsive and compulsive behaviour after
28 subthalamic stimulation in Parkinson disease. *J Neurol Neurosurg Psychiatry* **92**, 1313-1318,
29 doi:10.1136/jnnp-2021-326131 (2021).
- 30 37 Martinez-Martin, P. *et al.* The SCOPA-Motor Scale for assessment of Parkinson's disease is a
31 consistent and valid measure. *Journal of clinical epidemiology* **58**, 674-679,
32 doi:10.1016/j.jclinepi.2004.09.014 (2005).
- 33 38 Jost, S. T. *et al.* Levodopa Dose Equivalency in Parkinson's Disease: Updated Systematic
34 Review and Proposals. *Mov Disord*, doi:10.1002/mds.29410 (2023).
- 35 39 Gaser, C., Dahnke, R., Thompson, P. M., Kurth, F. & Luders, E. CAT – A Computational
36 Anatomy Toolbox for the Analysis of Structural MRI Data. *bioRxiv*, 2022.2006.2011.495736,
37 doi:10.1101/2022.06.11.495736 (2022).
- 38 40 Benjamini, Y. & Hochberg, Y. Controlling the false discovery rate: a practical and powerful
39 approach to multiple testing. *Journal of the Royal statistical society: series B*
40 *(Methodological)* **57**, 289-300 (1995).
- 41 41 Cohen, J. *Statistical power analysis for the behavioral sciences.* (L. Erlbaum Associates, 1988).

42

43

1 Tables

2 **Table 1: Baseline characteristics and outcomes at baseline and 6-month follow-up**

| | <i>N</i> | <i>M</i> | <i>SD</i> | | | | | |
|-----------------------|----------|----------|-------------|--|--|--|--|--|
| Age [y] | 49 | 64.47 | 8.23 | | | | | |
| Disease duration [y] | 49 | 9.99 | 4.35 | | | | | |
| Sex (female/male) [%] | 49 | 18/31 | [36.7/63.3] | | | | | |

| | Baseline | | | 6-MFU | | | Baseline vs. 6-MFU | |
|--------------------------------------|----------|----------|-----------|----------|----------|-----------|--------------------|------------------|
| | <i>n</i> | <i>M</i> | <i>SD</i> | <i>n</i> | <i>M</i> | <i>SD</i> | <i>p</i> | <i>Cohen's d</i> |
| NMSS total score | 49 | 51.1 | 25.2 | 49 | 39.2 | 26.3 | .003 | .46 |
| Cardiovascular | 49 | 1.8 | 3.0 | 49 | 1.4 | 2.0 | .656 | .13 |
| Sleep / fatigue | 49 | 13.2 | 9.1 | 49 | 9.0 | 5.9 | .001 | .55 |
| Mood / apathy | 49 | 5.3 | 5.7 | 49 | 6.6 | 12.1 | .409 | -.13 |
| Perceptual problems / hallucinations | 49 | 1.9 | 3.9 | 49 | .7 | 2.1 | .012 | .39 |
| Attention / memory | 49 | 4.6 | 4.8 | 49 | 3.7 | 4.1 | .201 | .20 |
| Gastrointestinal | 49 | 4.3 | 4.6 | 49 | 5.0 | 5.8 | .733 | -.12 |
| Urinary | 49 | 9.8 | 8.9 | 49 | 6.9 | 7.2 | .015 | .35 |
| Sexual function | 49 | 2.3 | 4.0 | 49 | 1.6 | 2.9 | .111 | .21 |
| Miscellaneous | 49 | 8.1 | 6.5 | 49 | 4.4 | 4.0 | <.001 | .68 |
| PDQ-8 SI | 43 | 33.0 | 16.3 | 48 | 24.9 | 14.5 | <.001 | .52 |
| UPDRS-III | 49 | 24.4 | 10.7 | 45 | 19.7 | 10.0 | .014 | .45 |
| SCOPA-M activities of daily living | 49 | 8.0 | 2.7 | 49 | 6.3 | 3.2 | <.001 | .56 |
| SCOPA-M motor complications | 49 | 4.0 | 2.8 | 45 | 1.8 | 2.3 | <.001 | .85 |
| LEDD [mg] | 49 | 1102 | 590.3 | 48 | 588.6 | 341.9 | <.001 | 1.06 |

3 **Table 1:** Demographic characteristics and outcome parameters at baseline and 6-month
4 follow-up. Reported p-values are corrected for multiple comparisons using Benjamini-
5 Hochberg's method (six scales). Bold font highlights significant results, $p < .05$.

6 **Abbreviations:** 6-MFU = 6-month follow-up; LEDD = Levodopa equivalent daily dose;
7 LEDD-DA: LEDD of dopamine agonists; NMSS = Non-Motor Symptom Scale; PDQ-8 SI =

1 8-item Parkinson’s Disease Questionnaire Summary Index; SCOPA-M = Scales for Outcomes
2 in Parkinson’s disease-Motor; SD = Standard deviation, UPDRS III = Unified Parkinson’s
3 Disease Rating Scale Part III

4

5

6 **Table 2: Association between brain morphometry and UPDRS-III**

| Cluster | Location | p-Value | MNI152-Coordinates | | |
|---------|-------------------------------|---------|--------------------|----|----|
| | | | X | Y | Z |
| 1 | Left superior frontal cortex | .029 | -14 | 51 | 17 |
| 2 | Right superior frontal cortex | .036 | 12 | 41 | 48 |

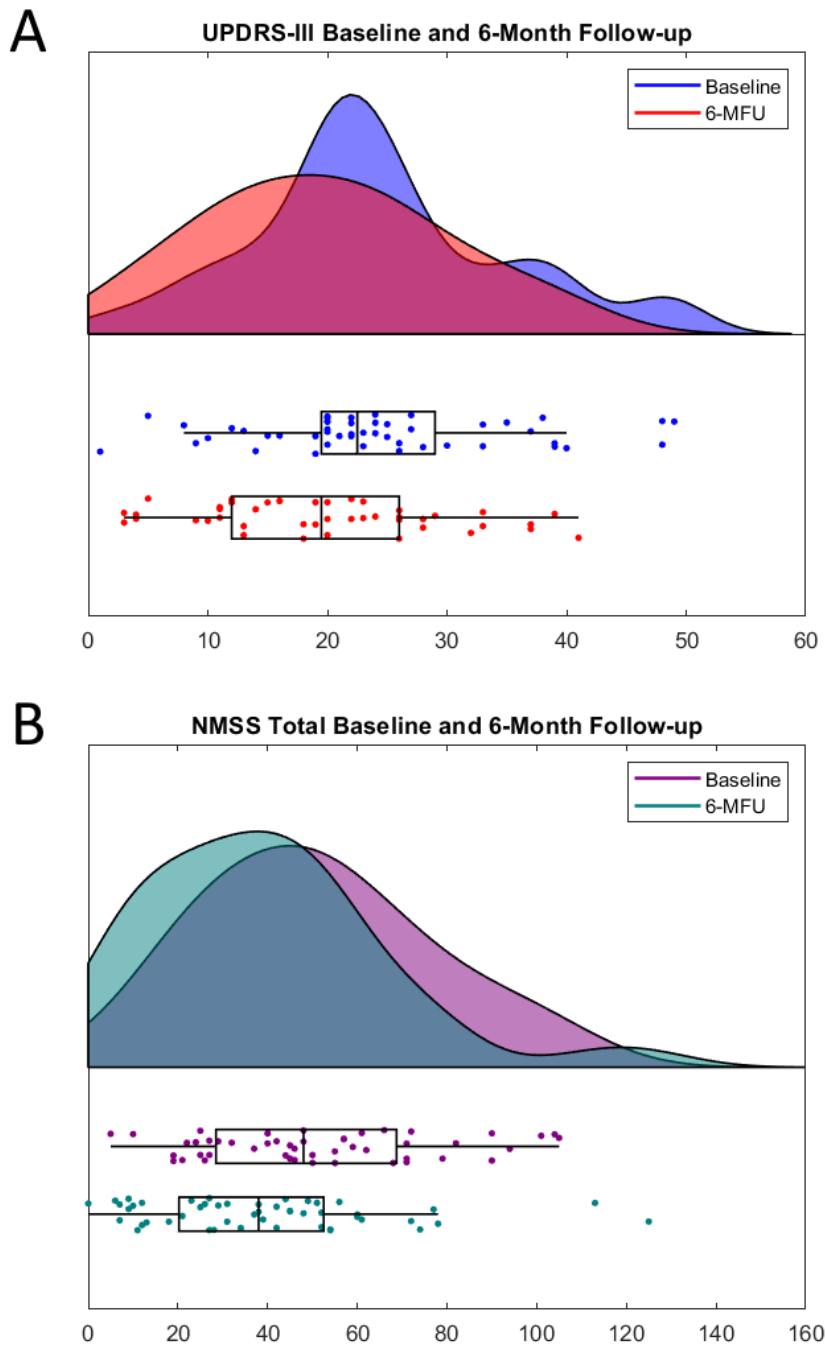
7 **Table 2.** Characteristics of clusters with an association between metrics of voxel-based
8 morphometry and postoperative change in UPDRS-III. “Cluster” denotes clusters with a
9 significant association between grey matter loss and poor motor response to deep brain
10 stimulation (DBS). “Location” indicates the anatomical landmark comprising the majority of
11 voxels of a cluster, according to the Desikan-Killiany Atlas. P-Values are clusterwise p-values
12 corrected for multiple comparisons. “MNI152-coordinates” describe the coordinates of the
13 cluster’s center of gravity in MNI152-space.

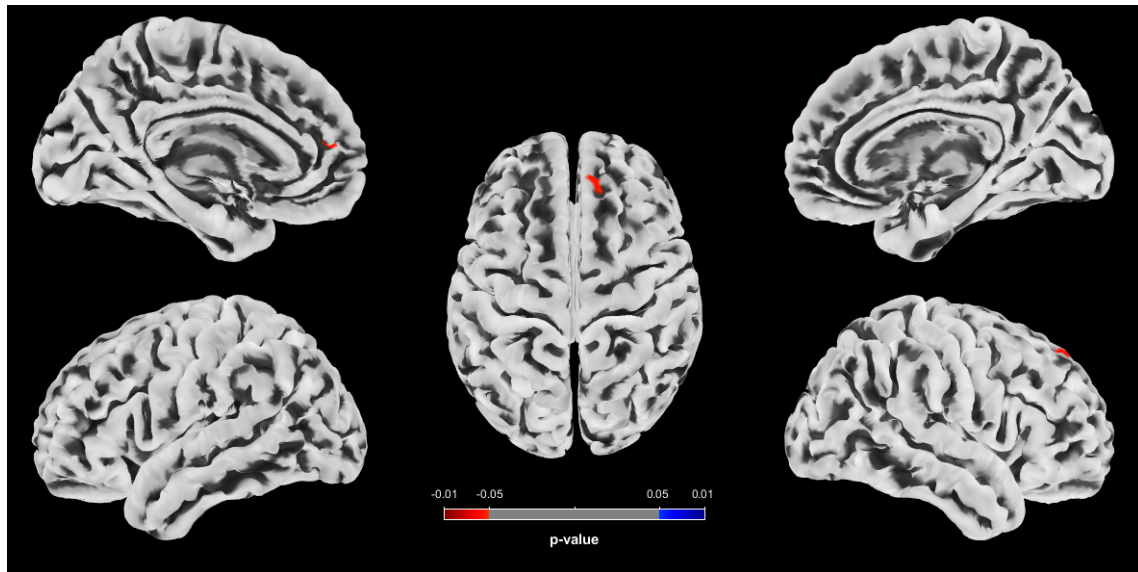
14

15

16

1 **Figures**





1

2 **Figure 2.** Clusters with an association between metrics of voxel-based morphometry and
3 postoperative change in UPDRS-III as revealed by the whole brain analysis. Results are
4 displayed as surface overlays. Clusters denote regions of grey matter loss significantly
5 associated with poor motor response to deep brain stimulation. P-Values were corrected for
6 multiple comparisons using a permutation-based approach and thresholded at $p < .05$, family-
7 wise error-corrected.