

1 **Title**

2 **The clinical, genomic, and microbiological profile of invasive multi-drug resistant**
3 ***Escherichia coli* in a major teaching hospital in the United Kingdom**

4
5 **Authors**

6 William L. Hamilton[1,2,3], Suny Coscione[1,2], Mailis Maes[1,4,5], Ben Warne[1,2,4], Lindsay J.
7 Pike[3], Fahad A. Khokhar[1,4,5], Beth Blane[1], Nicholas M. Brown[2,6], Theodore Gouliouris[2,6],
8 Gordon Dougan[1,4], M. Estée Török[1,2], and Stephen Baker[1,4]

9
10 **Affiliations**

- 11 1. University of Cambridge, Department of Medicine, Cambridge Biomedical Campus, Hills Road,
12 Cambridge CB2 0QQ, United Kingdom
13 2. Cambridge University Hospitals NHS Foundation Trust, Cambridge Biomedical Campus, Hills
14 Road, Cambridge CB2 0QQ, United Kingdom
15 3. Wellcome Sanger Institute, Wellcome Trust Genome Campus, Hinxton, CB10 1RQ
16 4. Cambridge Institute for Therapeutic Immunology and Infectious Disease, Jeffrey Cheah
17 Biomedical Centre, Puddicombe Way, Cambridge CB2 0AW, United Kingdom
18 5. University of Cambridge, Department of Veterinary Medicine, Madingley Road, Cambridge, CB3
19 0ES, United Kingdom
20 6. Clinical Microbiology and Public Health Laboratory, Cambridge Biomedical Campus, Hills Road,
21 Cambridge CB2 0QQ, United Kingdom

22
23 **Corresponding author email**

24 Will.I.hamilton@gmail.com

25
26 **Key words**

27 Antimicrobial resistance, whole genome sequencing, genomic epidemiology, *E. coli*, monoclonal
28 antibody, Gram negative, multidrug resistant, clinical microbiology, healthcare-associated infections

29
30 **Author contributions**

31 Conceptualization: SB, MET, GD, WLH
32 Investigation: WLH, SC, MM, LJP, BW, FAK, BB, NB, TG, SB
33 Formal analysis: WLH, SC, MM, LJP, SB
34 Data Curation: WLH, BW, SC, MM

- 1 Writing – original draft preparation: WLH, SB, BW, SC, MM
- 2 Writing – review and editing: WLH, SB, BW, SC, MM, ET, NB, TG
- 3 Visualization: WLH, SC, MM, BW
- 4 Supervision: SB, GD
- 5 Funding acquisition: SB, GD, MET
- 6 All authors reviewed and approved the final version of this manuscript.

7

8 **Funding**

9 WLH is funded by a National Institute for Health and Care Research (NIHR) Clinical Lecturer position
10 with the University of Cambridge. BW was funded from the National Institute for Health Research
11 Cambridge Biomedical Research Centre at the Cambridge University Hospitals NHS Foundation
12 Trust. MET was supported by a Clinician Scientist Fellowship (funded by the Academy of Medical
13 Sciences and The Health Foundation), and the National Institute for Health Research Cambridge
14 Biomedical Research Centre. Stephen Baker has a Wellcome senior research fellowship
15 (215515/Z/19/Z). The funders had no role in the design and conduct of the study; collection,
16 management, analysis, and interpretation of the data; preparation, review, or approval of the
17 manuscript; and decision to submit the manuscript for publication.

18

19 **Conflict of interests**

20 All authors declare no conflicts of interest.

21

22

1 **Abstract**

2 *Escherichia coli* is a ubiquitous component of the human gut microbiome, but is also a common
3 pathogen, causing around 40,000 bloodstream infections (BSI) in the UK annually. The number of *E.*
4 *coli* BSI has increased over the last decade in the UK, and emerging antimicrobial resistance (AMR)
5 profiles threaten treatment options. Here, we combined clinical, epidemiological, and whole
6 genome sequencing data with high content imaging to characterise over 300 *E. coli* isolates
7 associated with BSI in a large UK teaching hospital. Overall, only a limited number of sequence types
8 (ST) were responsible for the majority of organisms causing invasive disease. The most abundant
9 (20% of all isolates) was ST131, of which around 90% comprised the pandemic O25:H4 group. ST131-
10 O25:H4 isolates were frequently multi-drug resistant (MDR), with a high prevalence of extended
11 spectrum β -lactamases (ESBL) and fluoroquinolone resistance. There was no association between
12 AMR phenotypes and the source of *E. coli* bacteraemia or whether the infection was healthcare-
13 associated. Several clusters of ST131 were genetically similar, potentially suggesting a shared
14 transmission network. However, there was no clear epidemiological associations between these
15 cases, and they included organisms from both healthcare-associated and non-healthcare-associated
16 origins. The majority of ST131 genetic clusters exhibited strong binding with an anti-O25b antibody,
17 raising the possibility of developing rapid diagnostics targeting this pathogen. In summary, our data
18 suggest that a restricted set of MDR *E. coli* populations can be maintained and spread across both
19 community and healthcare settings in this location, contributing disproportionately to invasive
20 disease and AMR.

21

22 **Impact statement**

23 The pandemic ST131-O25:H4 lineage was a common cause of *E. coli* bloodstream infections in this
24 location, and carried multiple AMR mechanisms including ESBL and fluoroquinolone resistance. The
25 conserved antigenicity of ST131-O25:H4 raises the possibility of developing targeted immune
26 therapeutics and rapid diagnostics for this common and frequently multi-drug resistant pathogen.

27

28

1 Introduction

2 *Escherichia coli* (*E. coli*) is a ubiquitous commensal of the human gut that can also cause a spectrum
3 of invasive disease [1]. Globally, out of an estimated 13.7 million infection-related deaths in 2019, *E.*
4 *coli* caused the second highest number of deaths among 33 investigated bacterial pathogens, at
5 950,000 deaths (after *Staphylococcus aureus* with 1.1 million deaths) [2]. Bloodstream infections
6 (BSI) caused by *E. coli* cause significant morbidity and mortality [2, 3], and the incidence is increasing
7 year on year (Supplementary Figure 1) [4]. *E. coli* has become the commonest cause of BSI in the
8 United Kingdom (UK), causing around 40,000 BSI in the UK annually [5]. BSI can trigger acute
9 systemic inflammatory response syndromes that can cause severe end-organ damage and death.
10 Therefore, the prompt recognition, diagnosis and initiation of effective treatment, including
11 antimicrobials, is essential. Gram-negative bacteraemia is becoming increasingly recognised as a
12 public health threat and interventions aimed at reducing its incidence, including infections caused by
13 *E. coli*, are a strategic priority in the UK [6].

14
15 Antimicrobial resistance (AMR) limits the therapeutic options for many infections, including BSI
16 caused by Gram negative bacteria such as *E. coli* [7]. As *E. coli* occupy the gut they are a common
17 sink and source for AMR genes, which can catalyse resistance to a wide array of antimicrobials [8–
18 10]. There is evidence from a Danish cohort that *E. coli* plays a key role in driving the infant gut
19 microbiome towards higher abundance of AMR-associated genes [11]. Understanding the
20 production and proliferation of AMR among microbial communities is a key challenge in clinical
21 microbiology. The relationships between *E. coli* genomic diversity, including the mobile genetic
22 elements that can transport AMR genes, and their clinical and epidemiological characteristics, merit
23 further investigation. These analyses require integration of genomics with clinical microbiology,
24 which can be challenging in healthcare settings.

25
26 *E. coli* sequence type (ST)-131, serotype O25:H4, has spread internationally and is responsible for a
27 significant burden of extended spectrum β -lactamase (ESBL) *E. coli* disease in the UK and globally, in
28 both healthcare and community settings [12–19], in the food chain [20] and in animals [21]. This
29 pandemic lineage possesses virulence mechanisms [22] and is associated with CTX-M-15 β -
30 lactamase production and fluoroquinolone resistance. There is frequent movement of β -lactamase
31 genes between plasmids and the chromosome, and even closely related ST131 isolates can harbour
32 substantial variation in their complement of plasmid-mediated AMR genes [23]. The genetic
33 architecture underlying AMR in *E. coli* ST131, and how this propagates between individuals and
34 relates to both asymptomatic carriage and invasive disease, is poorly understood.

1

2 Antibacterial immune therapeutics and rapid diagnostic testing are promising tools against invasive
3 bacterial disease, particularly in the context of spreading and intensifying AMR, and a shortage of
4 novel antibacterial agents. Anti-O25b vaccines and diagnostics have been proposed to tackle ST131
5 [24–26]; however, their design and implementation relies on understanding the genetic variation
6 present in bacterial target genes and populations. This emphasises the importance of linking
7 genomics with clinical, microbiological and epidemiological data.

8

9 Here, we aimed to determine the clinical, genomic, and microbiological profile of invasive multi-drug
10 resistant (MDR) *E. coli* in the UK, by studying patients with *E. coli* bloodstream infections in a major
11 hospital in the East of England. All BSI *E. coli* isolates were whole-genome sequenced and underwent
12 a detailed phylogenetic analysis to determine the genomic epidemiology of these infections in
13 hospital and community settings. Lastly, exploiting a commercial monoclonal antibody (mAb) against
14 the O25b antigen, we aimed to understand antigen conservation in ST131 isolates to add to data
15 supporting the development of immune therapeutics and diagnostics for common AMR/MDR
16 organisms associated with BSI.

17

18

19 **Methods**

20 **Study setting and processing of clinical specimens**

21 All blood culture isolates were collected from patients at Cambridge University Hospitals NHS
22 Foundation Trust (CUH) in the East of England. Comprising Addenbrooke's and the Rosie Hospitals,
23 CUH has approximately 1,100 acute beds and provides secondary care services for Cambridge and
24 the surrounding area, serving a population of approximately 580,000 people. It also provides tertiary
25 care services (including infectious diseases, oncology, haematology, solid organ transplantation,
26 neurosurgery, paediatrics and neonatology) for the East of England.

27

28 Blood culture sets (BacT/ALERT, bioMérieux) were obtained from patients as clinically indicated. All
29 samples were processed in the UKHSA Clinical Microbiology and Public Health Laboratory (CMPHL),
30 which operates from the CUH site. All routine microbiological techniques were performed according
31 to UK Standards for Microbiology Investigations (UK SMIs) [27]. Species identification was
32 determined using mass spectrometry (MALDI-TOF MS, Bruker Daltonics). Antimicrobial susceptibility
33 testing was determined using the disc diffusion method, with breakpoints determined by the BSAC

1 criteria in use at the time (this study pre-dates the laboratory change to EUCAST methodology). All
2 blood culture isolates were prospectively stored in glycerol broth at -80°C.

3

4 *E. coli* isolates of interest were identified from a database of all culture results from CUH, exported
5 from the CMPHL laboratory information system, and filtered based on sample type and species. This
6 provided data on sample collection and result dates, patient identifiers and antimicrobial
7 susceptibility results determined by the clinical laboratory. All available *E. coli* isolates from samples
8 collected between 1st December 2016 and 31st December 2017 were included in the study.

9

10 Genome sequencing

11 Whole-genome sequencing was performed on all available stored isolates, except for duplicate
12 isolates defined as blood culture samples from the same patient occurring within 90 days of the first
13 isolate collection date. Standard DNA extraction methods were used as described in Supplementary
14 Methods. DNA libraries were prepared using the IHTP WGS Ultra II library kit and sequenced on an
15 Illumina HiSeq platform (Illumina) using a standard protocol at the Wellcome Sanger Institute.

16

17 Bioinformatics

18 QC filters

19 The following quality control (QC) filtering was applied to genome sequences: total genome length
20 <6MB, contig count <150, Kraken organism 1 is *E. coli*, and % reads mapping to Kraken organism 1
21 >30% (Supplementary Figures 3-5). The resulting phylogenetic tree included a long branch with 4
22 outlier samples, which were removed for subsequent analyses to yield the final analysis set
23 (Supplementary Figure 6).

24

25 Core genome alignment and producing phylogenetic tree

26 Core genome alignment, tree building, SNP distance matrix, AMR gene detection, plasmid detection,
27 multilocus sequence typing and *in silico* OH serotyping were performed on the Wellcome Sanger
28 Institute high performance computing (HPC) network. Downstream analyses and visualisations were
29 produced using the R programming language with *tidyverse* packages. Further details can be found
30 in Supplementary Methods. Briefly, core genome alignment was performed using *roary* [28],
31 requiring genes to be shared across 99% of isolates (Supplementary Table 1). A maximum likelihood
32 phylogenetic tree was generated from the core genome alignment using IQTREE [29], using a GTR+G
33 substitution model [30] with ultrafast bootstrapping for branch support [31]. The resulting
34 phylogenetic tree was initially visualised and manipulated using Microreact [32] and final figures

1 presented in the paper were produced using *ggtree* [33]. A SNP distance matrix was produced using
2 *snp-dists* [34].

3

4 AMR gene and plasmid detection

5 AMR genes were detected from the CARD database, downloaded from: <https://card.mcmaster.ca/>,
6 version 3.1.1 [35]. ARIBA [36] was used to prepare the CARD database and analyse the samples.
7 *plasmidfinder* was used to identify plasmids [37], also prepared using ARIBA.

8

9 Multilocus sequence typing (MLST) and OH serotyping

10 MLST typing and OH serotyping were performed using *srst2* [38].

11

12 Clinical and epidemiological data linkage

13 Prior to pseudonymisation for sequencing, the patient Medical Record Number was used to link
14 records to the CUH electronic health record system (Epic, Epic Systems) and to locally held infection
15 control databases created for submission to the Public Health England (PHE, now UK Health Security
16 Agency) mandatory surveillance programme for hospital acquired infections.

17

18 Demographic data including gender, age, main specialty, *etc* were extracted from Epic, whilst
19 suspected infectious focus was obtained from the infection control database. Categorisation of
20 infection (healthcare-onset, healthcare-associated or community-onset) was made by accessing
21 individual patient records and making an assessment based on adapted criteria, described in
22 Supplementary Methods. To assess epidemiological association between selected cases, bed
23 movements during hospital admission were reviewed. Strong epidemiological linkage was defined as
24 two patients having been on the same ward and bay at any stage during admission. Weak
25 epidemiological linkage was defined as having been on the same ward or under the same clinical
26 specialty up to a week apart, without close contact based on bed location.

27

28 Antibody binding and image analysis

29 The monoclonal antibody used for high-content antibody binding assay was KM467, an IgG1
30 antibody based on VH and VL sequences of 3E9-11 [39]. The synthesis of this antibody and
31 methodology used for the high content imaging assay have been previously described [40]. The full
32 protocol for antibody binding is described in Supplementary Methods. Briefly, bacterial colonies
33 were picked, cultured overnight in LB broth, diluted, washed and incubated with the KM467
34 antibody in CellCarrier-96 Ultra plates (Perkin Elmer), followed by addition of anti-human IgG and
35 DAPI. Plates were imaged on an Opera Phenix confocal microscope (PerkinElmer) using the Alexa

1 Fluor 647 and DAPI channels with the 63x water immersion objective. 16 fields and 3 Z-stacks were
2 imaged per well. The image analysis was carried out using PerkinElmer Harmony (v4.9). The final
3 result output was categorical, based on whether there was antibody binding or no binding imaged
4 on the plate.

5

6 **Statistical analysis**

7 Logistic regression to test for associations between variables and 30-day mortality were performed
8 in R using a generalized linear model. The R code took the general form:

```
9     model <- glm(mortality_30_days ~.,family=binomial(link='logit'), data=metadata)  
10     summary(model)  
11     anova(model, test="Chisq")
```

12 Where the 'metadata' file comprised columns of metadata such as age, sex, etc.

13

14 Clusters of ST131 were defined from the SNP difference matrix produced from the *snp-dists* package,
15 using *scipy.cluster.hierarchy* functions *dendrogram*, *linkage*, and *fcluster* to identify clusters within a
16 specified genetic distance from each-other, corresponding to the intended SNP difference.

17

18 **Ethics**

19 This study was conducted under the terms of ethical approval granted by the NHS Research Ethics
20 Committee for the project "Whole genome sequencing of bacterial pathogens" (reference:
21 12/EE/0439).

22

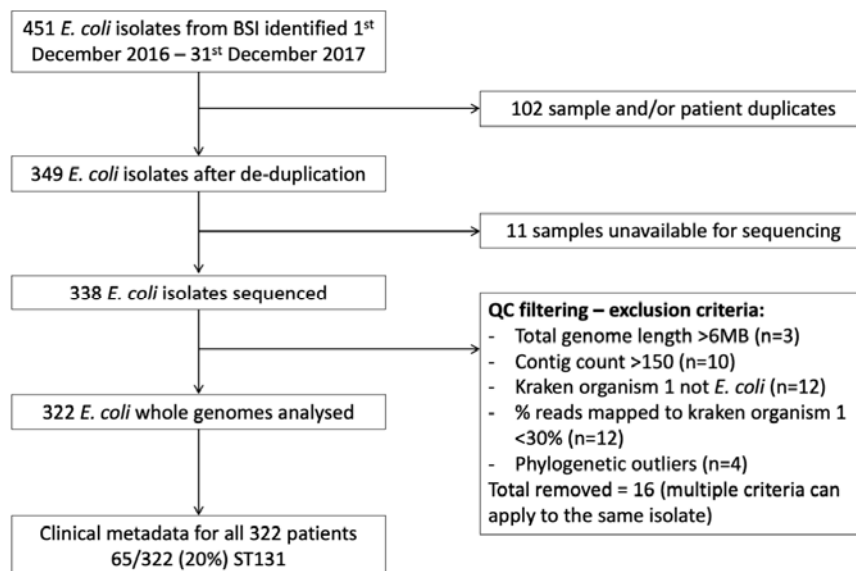
23

24 **Results**

25 **Study population and clinical outcome**

26 A total of 451 *E. coli* BSI isolates at Cambridge University Hospitals NHS Foundation Trust were
27 identified within the designated study dates (1st December 2016 to 31st December 2017). After
28 sample de-duplication, there were 349 patients with *E. coli* BSI represented by at least one sample,
29 and whole-genome sequencing was performed on at least one *E. coli* isolate originating from 338
30 patients (Figure 1). After genome quality control (QC) filtering, the final analysis group comprised
31 322 *E. coli* BSI isolates with high-quality whole genome sequence information and associated
32 metadata.

33



1

2 **Figure 1.** Study flow diagram. This shows the number of *E. coli* samples included in the study and in
 3 the final analysis. 451 *E. coli* isolates from 349 individuals were identified within the study period, of
 4 which 338 were sequenced and 322 passed sequencing QC filtering.

5

6

7 The epidemiological characteristics of the study population are shown in Table 1. Where patient
 8 address information was available (n=161/322, 50%), the majority of patients (118/161, 73%) lived
 9 within the local county (Cambridgeshire) (Supplementary Figure 2). The most commonly identified
 10 source of the bacteraemia (151/322; 47%) was a primary urinary tract infection (UTI). Overall,
 11 128/322 (40%) of cases were categorised as being of ‘community-onset, healthcare-associated’;
 12 105/322 (33%) were of ‘community-onset, non-healthcare-associated’, and 83/322 (26%) were of
 13 hospital-onset, healthcare-associated.

14

		Study population (n=322)
Age (years)	Median (IQR)	74 (58-85)
Number of adults, paediatric and neonatal patients	Adults	313 (97%)
	Paediatric	4 (1.2%)
	Neonatal	5 (16%)
Sex	Female	174 (54%)
	Male	148 (46%)

Bacteraemia source	Urinary tract	151 (47%)
	Hepatobiliary	57 (18%)
	Gastrointestinal (other than hepatobiliary)	18 (5.6%)
	Other	52 (16%)
	Unknown	44 (14%)
Infection classification	Community-onset, healthcare-associated	128 (40%)
	Community-onset, non-healthcare-associated	105 (33%)
	Hospital-onset, healthcare-associated	83 (26%)
	Unclassified	6 (1.9%)
30-day mortality	Total	40/322 (12%)
	Adult	38/313 (12%)

1 **Table 1.** Study population epidemiological characteristics. Only patients associated with high quality
 2 *E. coli* genomes included in the study are presented. IQR = Interquartile Range.

3

4 In total, 40/322 (12%) patients died within 30 days of the onset of bacteraemia. The association
 5 between 30-day mortality in adult patients with age, sex, healthcare association, bacteraemia
 6 source, whether the *E. coli* had an ESBL or AmpC phenotype, and whether the organism was ST131,
 7 was investigated by logistic regression. Only age and bacteraemia source were significantly
 8 associated with 30-day mortality ($p=0.049$ and $p=1.6 \times 10^{-5}$, respectively). Overall, 18/111 (16%) adults
 9 aged >80 years old died within 30 days of BSI onset, compared with 20/202 (9.9%) in patients aged
 10 <80 years old (Supplementary Table 2). BSI with a urinary tract source was strongly associated with
 11 reduced odds of 30-day mortality: 5/149 (3.4%) adults with urinary tract source died within 30 days
 12 compared with 33/164 (20%) adults with any other primary source of infection.

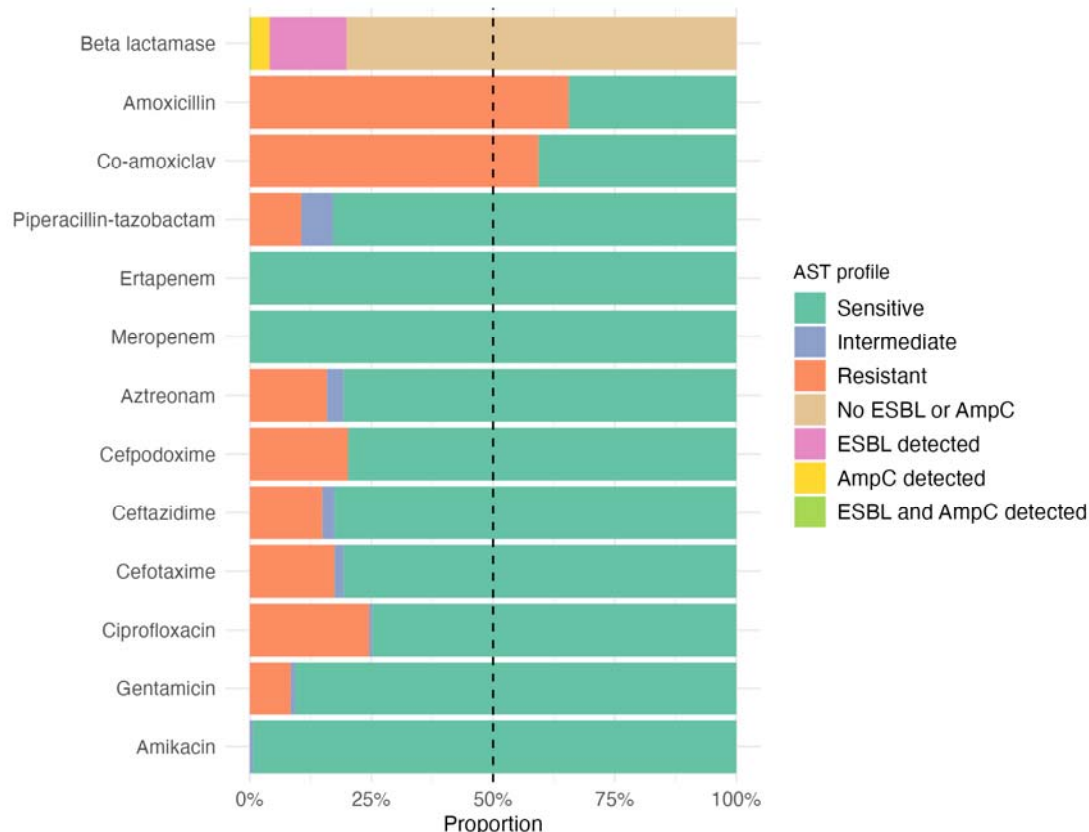
13

14 **Phenotypic antimicrobial susceptibility profile**

15 The phenotypic antimicrobial susceptibility test (AST) profile for the 322 *E. coli* isolates, measured by
 16 disc diffusion, is shown in Figure 2. There was a high prevalence of resistance to the β -lactam + β -
 17 lactamase inhibitor combination amoxicillin + clavulanic acid (co-amoxiclav), with 191 (59%) isolates
 18 being resistant. Resistance to piperacillin + tazobactam, another β -lactam + β -lactamase inhibitor
 19 combination, was lower (34 (11%), 21 (6.5%) and 267 (83%) isolates were resistant, intermediate
 20 and susceptible, respectively). An ESBL and/or AmpC phenotype was detected in 52 (16%) and 13
 21 (4%) isolates, respectively (with a single isolate generating both phenotypes); no carbapenem
 22 resistant organisms were identified. Resistance to aminoglycosides was low: 27 (8.4%), 3 (<1%) and
 23 292 (91%) isolates were resistant, intermediate and susceptible to gentamicin, respectively.

1 Gentamicin is currently the recommended first-line treatment for complicated UTI in CUH; nearly all
2 isolates were susceptible to amikacin (2 (<1%) and 320 (99%) were intermediate and susceptible,
3 respectively).

4



5

6 **Figure 2.** Phenotypic antimicrobial susceptibility profile for all isolates. Antimicrobial susceptibility
7 was determined by disc diffusion with break points interpreted using BSAC zone-size cut-offs.
8 Isolates that were resistant to cefpodoxime were selected for further testing to determine whether
9 an ESBL or AmpC phenotype was present.

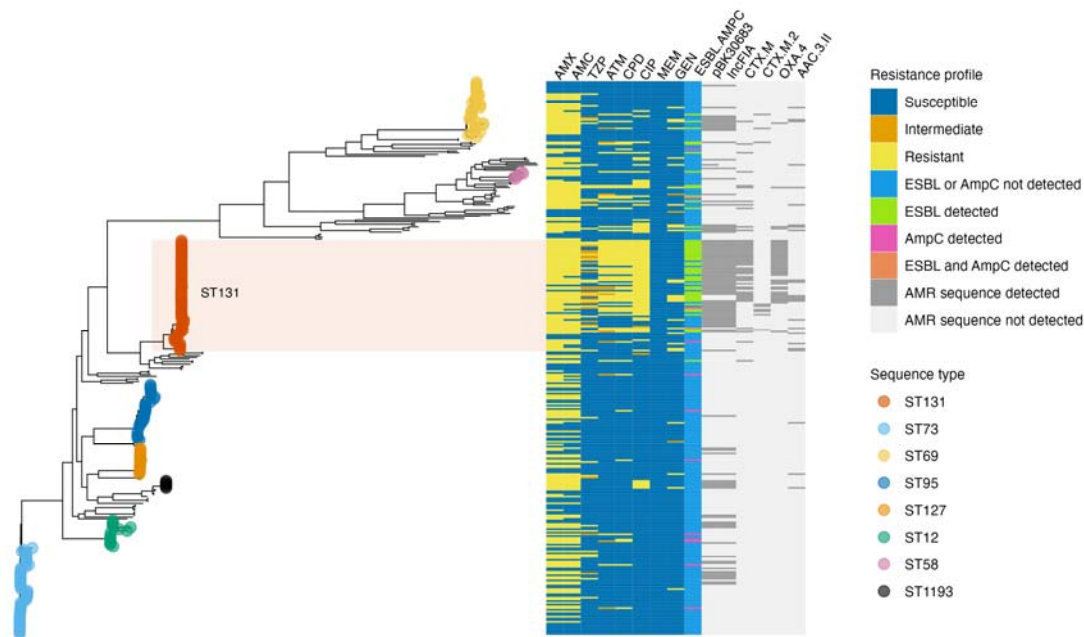
10

11

12 Genomic characterisation

13 The phylogeny of the 322 *E. coli* isolates, generated by the core genome sequences, is shown in
14 Figure 3. In total, 75 sequence types were identified; however, the majority were identified at low
15 frequency, with 42 being represented only by a single sample (Supplementary Table 3,
16 Supplementary Figure 7). Just four STs accounted for over half (54%) of all cases: ST131 (65, 20%),
17 ST73 (51, 16%), ST69 (33, 10%), and ST95 (28, 8.7%). The core genome sequences generated a well-

1 defined population structure, which correlated precisely with assigned ST (i.e., genetic diversity was
2 lower within sequence types than between them) (Supplementary Figures 8-9).
3



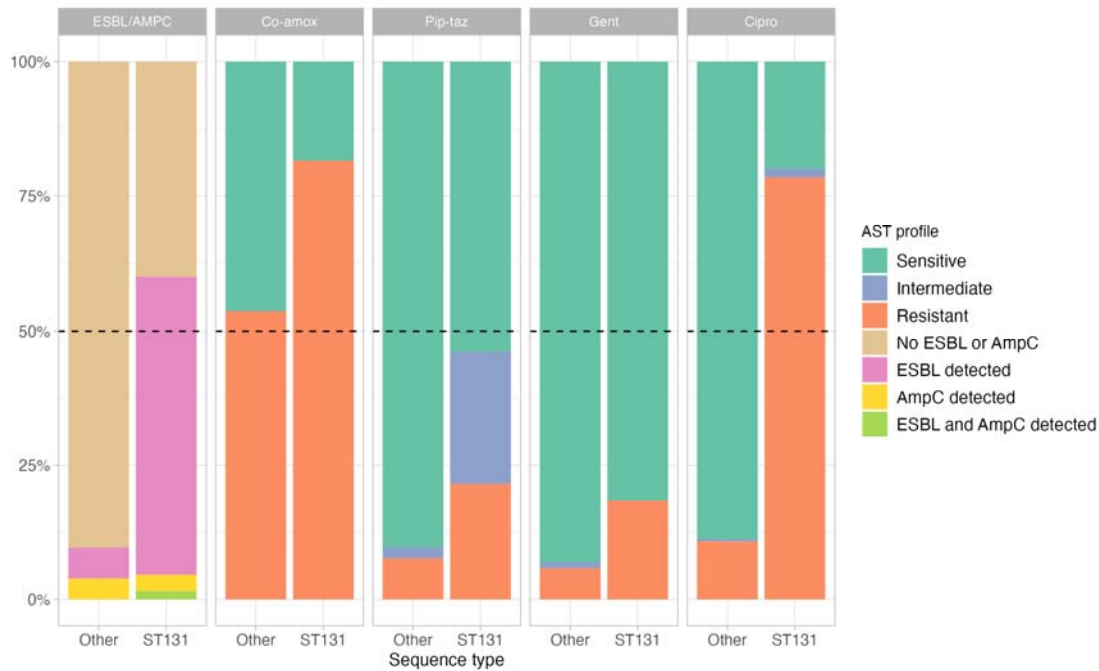
4
5 **Figure 3.** Core genome phylogeny of the *E. coli* study population. Branch tips are coloured by
6 sequence type, showing the 8 sequence types with at least 5 samples. Coloured bars depict
7 phenotypic antimicrobial susceptibility profile (left) and the presence or absence of selected AMR-
8 associated genes and plasmids (right). Sequence type 131 (ST131) is highlighted, which was the most
9 frequent sequence type identified (65/322 (20%) isolates) and associated with high rates of AMR
10 (Figure 4). AMX = Amoxicillin, AMC = Co-amoxiclav, TZP = Tazocin, ATM = Aztreonam, CPD =
11 Cefpodoxime, CIP = Ciprofloxacin, MEM = Meropenem, GEN = Gentamicin, ESBL = extended
12 spectrum β -lactamase, AMPC = AmpC β -lactamase.

13

14

15 ST131 was the most abundant ST and was associated with phenotypic resistance to multiple
16 antimicrobials (Figure 4). Of the ST131 organisms, 37/65 (57%) had an ESBL detected, compared with
17 15/257 (5.8%) for non-ST131 samples; 51/65 (78%) were ciprofloxacin resistant, compared with
18 28/257 (11%) for non-ST131 isolates. The unadjusted odds ratio (OR) for ST131 being classified as an
19 ESBL producer and ciprofloxacin resistant was 21 (95% confidence interval, CI, 9.9 - 47, $p < 10^{-5}$,
20 Fisher's exact test) and 29 (95% CI 14 - 65, $p < 10^{-5}$, Fisher's exact test), respectively. ST131 isolates
21 were also more likely to possess AMR resistance-associated genes and plasmids, such as CTX-M and

- 1 OXA-4, and the plasmid structures pBK30683 and IncFIA, than non-ST131 isolates (Figure 3,
- 2 Supplementary Figure 10).



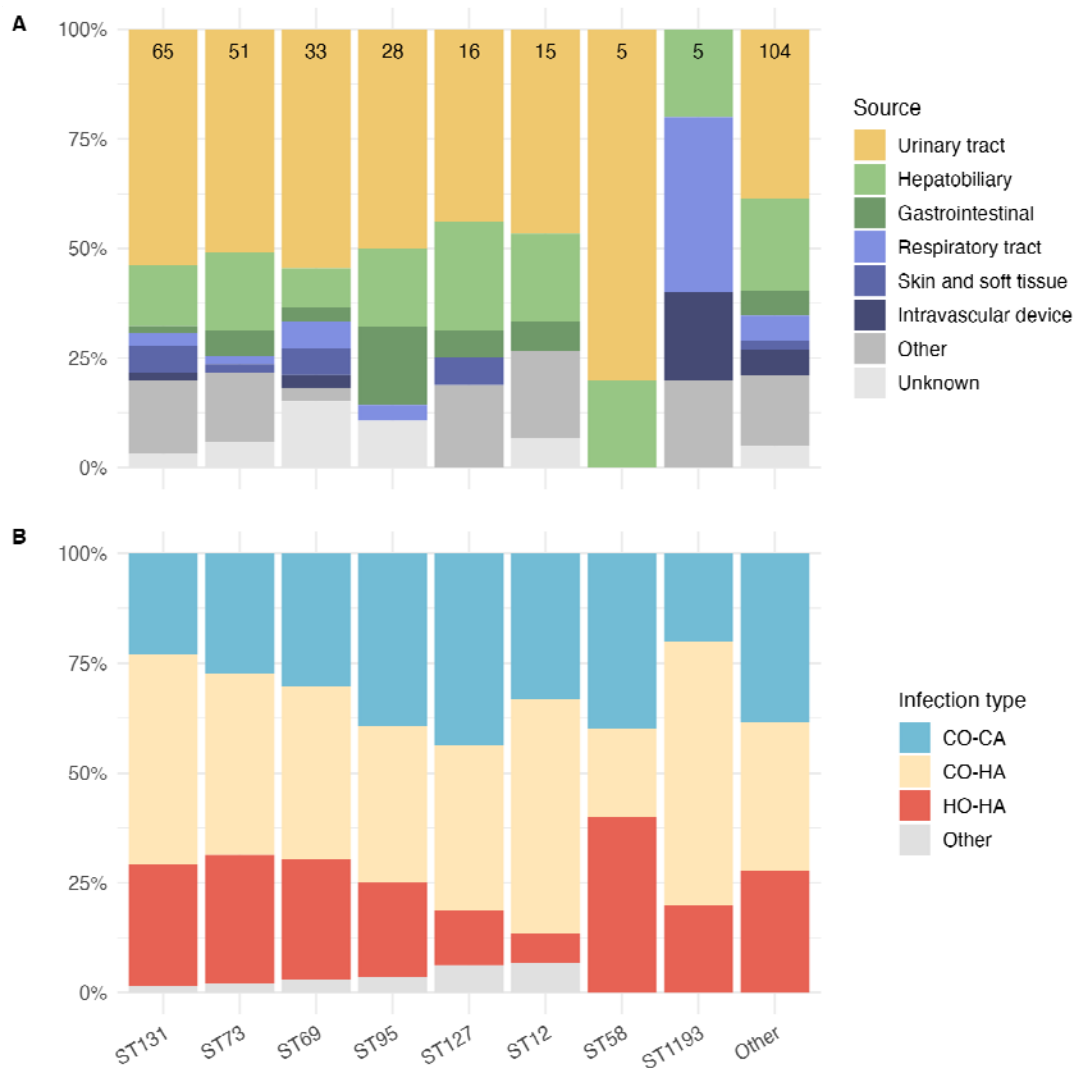
3
4 **Figure 4.** Phenotypic antimicrobial susceptibility profile for selected antimicrobials for ST131 vs non-
5 ST131 isolates. Antimicrobial susceptibility was determined by disc diffusion using BSAC cut-offs for
6 interpretation, and ESBL and AmpC status was determined for cefpodoxime resistant isolates.
7 Isolates are divided into ST131 (n=65) and non-ST131 (n=257). Results for ESBL or AmpC status
8 (“ESBL/AMPC”), amoxicillin-clavulanic acid (“Co-amox”), piperacillin-tazobactam (“Pip-taz”),
9 gentamicin (“Gent”) and ciprofloxacin (“Cipro”) are shown.

10
11

12 [The clinical and epidemiological characteristics of ST131](#)

13 There was no association between isolates belonging to ST131 and the likelihood for organisms to be
14 healthcare-associated or the source of bacteraemia (Figure 5, Supplementary Figure 11). This
15 observation implies that ST131 can cause invasive disease in both community and healthcare
16 settings. Indeed, all the major STs had a comparable profile of bacteraemia source (most commonly
17 UTI) and the proportion that were healthcare-associated. One exception was ST1193, of which none
18 were associated with UTI; however, this group only contained five isolates.

19



1

2 **Figure 5.** Bacteraemia source and healthcare association class for major sequence types. Showing all
 3 sequence types with ≥ 5 samples, in size order from highest to lowest left to right, followed by all
 4 other isolates. Number of isolates in each sequence type displayed in the top row of bars. CO-CA =
 5 Community-onset, Community Associated; CO-HA = Community-onset, Healthcare-associated; HO-
 6 HA = Hospital-onset, Healthcare-associated.

7

8

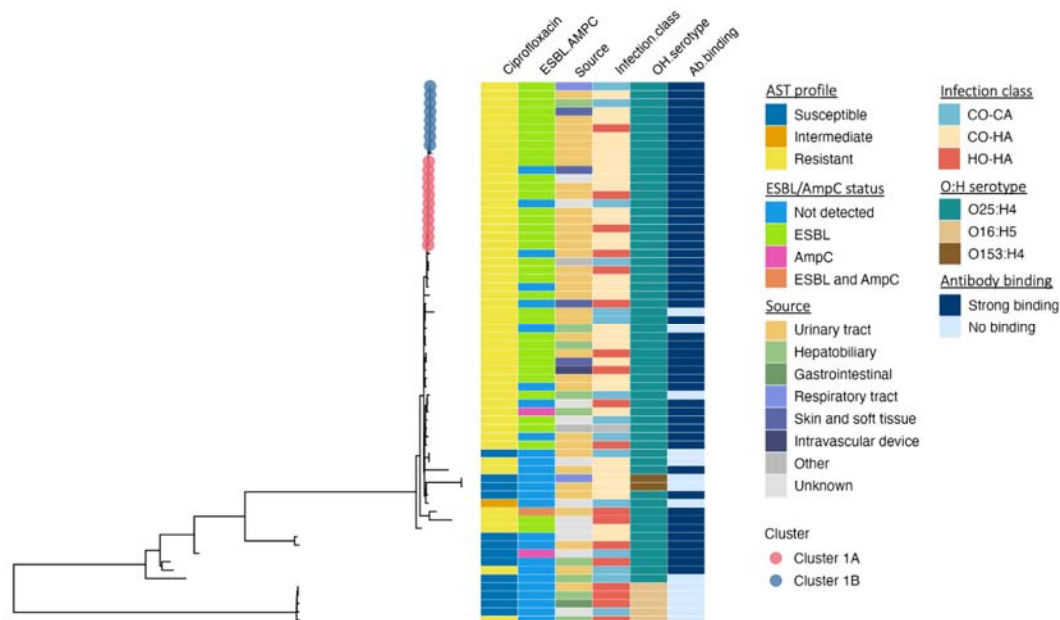
9 Disrupting the transmission of AMR within clinical settings is a key goal of infection prevention and
 10 control (IPC). We investigated potential epidemiological links between genetically similar ST131
 11 isolates to better understand possible transmission mechanisms. Clusters of highly-similar ST131
 12 isolates were defined with a maximum permitted pairwise SNP difference from the core genome
 13 alignment of 17 SNPs within clusters (previously suggested as an epidemiologically relevant cut-off

1 for transmission investigations [41]). We identified two large clusters, referred to as Cluster 1A (11
2 isolates, with maximum pairwise difference of 12 SNPs) and Cluster 1B (eight isolates, with
3 maximum pairwise difference of 14 SNPs). Both these clusters were entirely comprised of
4 ciprofloxacin-resistant isolates and 17/19 had an ESBL phenotype (Figure 6). We additionally noted a
5 smaller group of MDR organisms, ST1193 (five samples in total), in which 3 samples formed a cluster
6 (with maximum pairwise difference of four SNPs).

7

8 Both ST131 clusters included both community- and healthcare-associated cases. On review of
9 patient electronic medical records, no epidemiological links were identified between cases in Cluster
10 1B or the ST1193 cluster. In Cluster 1A, only weak epidemiological links were identified between two
11 sets of patients. One patient pair overlapped the same ward for a single day but were not placed in
12 the same patient bay. Another pair were placed in the same patient bay but did not temporally
13 overlap. None of the hospital acquired cases showed clinical or epidemiological links to other cases
14 within each cluster. In summary, we did not identify any clear signals of direct patient-to-patient
15 transmission of ST131, even for highly similar isolates.

16



17

18 **Figure 6.** ST131 core genome phylogeny. Sub-tree of the same phylogeny displayed in Figure 3
19 showing the 65 ST131 isolates. Branch tips depict the two largest clusters of highly similar ST131
20 isolates. Coloured bars show, from left to right, ciprofloxacin susceptibility (determined by disc
21 diffusion and BSAC interpretations), ESBL or AmpC status (assayed in cefpodoxime resistant isolates),
22 infection source and classification, OH serotype status, and the strength of anti-O25b antibody

1 binding. A large monophyletic group of isolates were nearly all ciprofloxacin resistant, mostly
2 possessed an ESBL, and were nearly all serotype O25:H4 with strong binding to the anti-O25b
3 antibody. As with most *E. coli* isolates, the majority of infections were from a urinary source, and a
4 mixture of community- and healthcare-associated cases were represented. CO-CA = Community-
5 onset, community associated; CO-HA = Community-onset, healthcare-associated; HO-HA = Hospital-
6 onset, healthcare-associated.

7
8

9 O:H serotyping *in silico* and *in vitro*

10 We evaluated the O:H serotype profile of the isolates *in silico*. 93 O and H serotype combinations
11 were identified (Supplementary Table 4). As with the STs, the distribution was highly skewed; 58 O:H
12 serotypes were represented by only a single sample, while the top five O:H serotypes included
13 136/322 (42.2%) of all samples. The most common O:H serotype was O25:H4 (60 isolates, 18.6%);
14 which has been associated with ESBL-producing ST131 isolates in several countries. 58/65 (89.2%)
15 ST131 were O25:H4 in this collection, of which 39/58 (67%) had an ESBL and/or AmpC phenotype.
16 The remaining ST131 isolates were serotype O16:H5 (n=5) and O153:H3 (n=2), none of which were
17 ESBL or AmpC producers. The two non-ST131 O25:H4 isolates were both ST95 (neither were ESBL or
18 AmpC producers). The 65 ST131 genomes were aligned against an ST131-specific reference genome
19 and a 347bp fragment of the *pabB* gene was extracted from the alignment (using primers from [42,
20 43]). This analysis indicated that all O25 isolates from the collection specifically belonged to O25b.

21

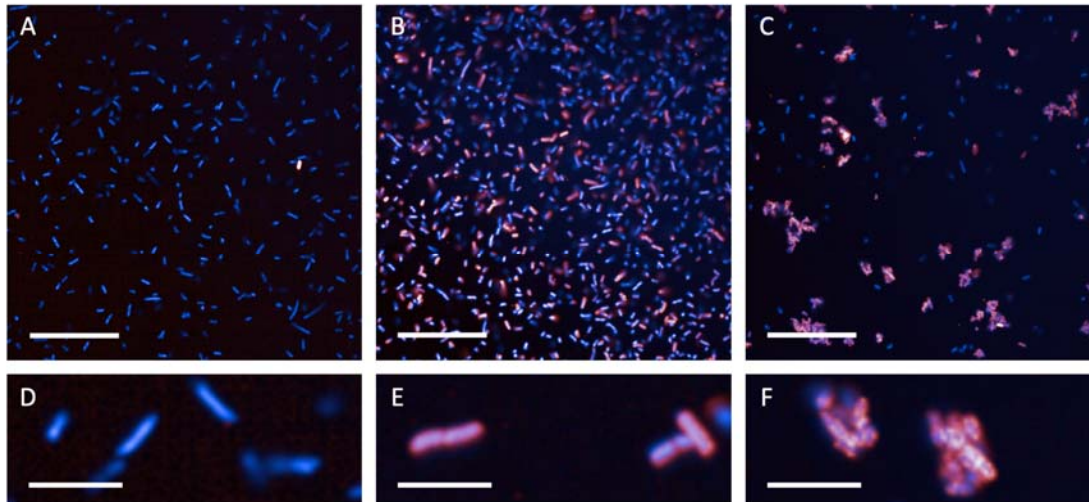
22 The sensitivity and specificity of an organism being ST131 as a marker of ESBL production in this *E.*
23 *coli* cohort was 71% and 90%, respectively; and the sensitivity and specificity of ST131 as a marker of
24 ciprofloxacin resistance was 65% and 94%, respectively. The Positive Predictive Value (PPV) and
25 Negative Predictive Value (NPV) an organism being ST131 as a marker of ESBL production was 57%
26 and 94%, respectively, and for ciprofloxacin resistance, of 79% and 89%, respectively. A negative
27 rapid serology test for ST131 in *E. coli* BSI could therefore be an early indicator that an isolate is
28 unlikely to be an ESBL producer; a positive result would suggest the isolate was more likely to be an
29 ESBL producer.

30

31 To further explore the potential for an antibody-based rapid diagnostic test for ST131, as a potential
32 marker of ESBL in *E. coli*, we evaluated the binding strength of an anti-O25b antibody against all
33 ST131 isolates. The majority of isolates had strong (49/65, 75%) or strong agglutinating (2/65, 3%)
34 antibody binding (grouped as 'strong binding'); a minority had no (14/65, 22%) antibody binding

1 (Figure 7). All of the strong binding samples were predicted to be serotype O25b:H4 *in silico*. Of the
2 14 samples with no binding, 7 were O25b:H4, 5 were O16:H5, and 2 were O153:H4. The clusters of
3 genetically similar, low-diversity *E. coli* ST131 were all O25b:H4 and all exhibited strong antibody
4 binding (Figure 6).

5



6

7 **Figure 7.** Immunofluorescence of anti-ST131-O25b antibody binding. Shown in blue (DAPI) nucleoid
8 of *E. coli* ST131; shown in red (Alexa-647) KM-467 anti-ST131-O25b antibody. The main phenotypes
9 identified were 'no binding' (A, magnified in D), 'strong binding' (B, magnified in E), and 'strong
10 binding with agglutination' (C, magnified in F). Scale bar: A-C = 50 microns, D-F = 10 microns.

11

12

13 Discussion

14 In this study, we combined multiple data sources including clinical, epidemiological, genomic and
15 antibody binding data to characterise *E. coli* BSI in a large UK hospital. Of the 322 isolates included in
16 the study, 12% patients died within 30 days of their bacteraemia, with increasing age and non-
17 urinary source associated with higher odds of death. By disc diffusion testing, 59% isolates were
18 resistant to co-amoxiclav, 16% had an ESBL, and 4% had an AmpC. At the time the samples were
19 collected, co-amoxiclav was the first-line recommended treatment for complex UTI in the hospital;
20 this has since been switched to gentamicin, for which resistance was low (around 90% isolates were
21 susceptible to gentamicin). There were no carbapenem resistant organisms identified.

22

23 Consistent with previous work [13], ST131 was the most frequent sequence type, accounting for
24 around 20% of all isolates. The majority of ST131 (around 90%) were serotype O25b:H4, which was

1 associated with ciprofloxacin resistance, ESBL production, and low-diversity clusters. However, these
2 clusters, despite being highly similar across the core genome, generally did not have discernible
3 epidemiological links between them. This raises the question of how genetically similar *E. coli*
4 isolates, including MDR organisms such as clones of ST131-O25b:H4, are spreading between
5 individuals. One possibility is that transmission occurs through contaminated environments, such as
6 fomites. Consistent with this view, ST131 has been found to be prevalent in wastewater samples
7 [44–47]. The organisms may then become incorporated into the human microbiome, periodically
8 causing pathology when such organisms enter a new niche, such as the urinary tract. Another
9 possibility is that transmission occurs in pre-hospital settings such as care homes [12].

10

11 ST131, when compared with non-ST131 isolates, was commonly associated with both ciprofloxacin
12 resistance and ESBL production; this observation may have potential for use as an initial rapid
13 screening tool for AMR in *E. coli* BSI in this population. The negative predictive value of ST131 for
14 ciprofloxacin resistance and ESBL illustrates the potential for genomic surveillance combined with
15 antimicrobial susceptibility data to identify markers of clinically salient phenotypes, such as AMR, for
16 the development of rapid diagnostics. Screening tests such as this rely on understanding the
17 relationship between the screening target (e.g. ST131) and the phenotype of interest. For example,
18 an ST131 screening test would lose its high negative predictive value if applied in a population in
19 which ESBLs were common in non-ST131 *E. coli* isolates. Therefore, ongoing surveillance, integrating
20 molecular profiling, clinical epidemiology, and traditional microbiology, is required to ensure that
21 tests and targeted therapies remain reliable, and to identify potential new targets as organisms
22 continually evolve.

23

24 We acknowledge several limitations to our study. First, it was a single centre study conducted over
25 one year. Sampling longitudinally over several years would allow investigation of evolutionary trends
26 in *E. coli* populations, for example whether ST131 is increasing in frequency relative to other
27 sequence types over time, and how new lineages emerge and spread. However, our findings are
28 consistent with other studies [13], which also showed a small number of sequence types, including
29 ST131, cause the majority of invasive disease. Second, we did not sample from the community to
30 contextualise the BSI *E. coli* genomic diversity; for example, within the gut microbiome or in
31 uncomplicated lower UTI managed in the community. Wastewater sampling suggests that the
32 genomic profile of invasive *E. coli* is highly skewed compared with the commensal *E. coli* population
33 present in the human gut [47]. Finally, there were limitations on what clinical metadata could be
34 retrospectively collected. For example, we were unable to reliably identify whether UTI were

1 catheter-associated, particularly if there had been catheter manipulation in the community prior to
2 admission to hospital. This was often poorly documented in the electronic medical records, and may
3 represent an opportunity for improved documentation for Gram-negative bacteraemia surveillance
4 going forward.

5

6 In summary, we present the clinical, epidemiological, genomic and antibody-binding profile of a
7 cohort of over 300 invasive *E. coli* isolates, identifying clusters of MDR ST131-O25b:H4 organisms
8 that are maintained in both healthcare-associated and community settings. Reducing the spread of
9 these MDR clusters should be a key target for combating AMR. Antigenic correlates of virulence and
10 AMR in a population, such as O25b:H4, could be further investigated for potential vaccines,
11 therapeutics and rapid diagnostic tests.

12

13

1 **Acknowledgements**

2 We are grateful for the assistance of Josefin Bartholdson Scott and Sally Forrest in isolate processing
3 and DNA extraction for this study. We would also like to thank the Clinical Microbiology and Public
4 Health Laboratory staff for their efforts in processing and storing isolates; the Wellcome Sanger
5 Institute (WSI) sequencing team for *E. coli* whole genome sequencing; and the WSI PAM Informatics
6 team for bioinformatics support.

7
8 This research was funded by the National Institute for Health Research Cambridge Biomedical
9 Research Centre at the Cambridge University Hospitals NHS Foundation Trust. The views expressed
10 are those of the authors and not necessarily those of the NHS, the NIHR or the Department of Health
11 and Social Care. This work uses data provided by patients and collected by the NHS as part of their
12 care and support.

13

14

1 **References**

- 2 1. **Kaper JB, Nataro JP, Mobley HLT.** Pathogenic *Escherichia coli*. *Nat Rev Microbiol* 2004;2:123–
3 140.
- 4 2. **GBD 2019 Antimicrobial Resistance Collaborators.** Global mortality associated with 33
5 bacterial pathogens in 2019: a systematic analysis for the Global Burden of Disease Study
6 2019. *Lancet (London, England)* 2022;400:2221–2248.
- 7 3. **Verway M, Brown KA, Marchand-Austin A, Diong C, Lee S, et al.** Prevalence and Mortality
8 Associated with Bloodstream Organisms: a Population-Wide Retrospective Cohort Study. *J*
9 *Clin Microbiol*;60. Epub ahead of print 2022. DOI: 10.1128/jcm.02429-21.
- 10 4. **UK-HSA.** *Escherichia coli* bacteraemia: annual data. *National statistics*.
11 <https://www.gov.uk/government/statistics/escherichia-coli-e-coli-bacteraemia-annual-data>
12 (2022, accessed 5 November 2022).
- 13 5. **UK-HSA.** ESPAUR report. [https://www.gov.uk/government/publications/english-surveillance-](https://www.gov.uk/government/publications/english-surveillance-programme-antimicrobial-utilisation-and-resistance-espaur-report)
14 [programme-antimicrobial-utilisation-and-resistance-espaur-report](https://www.gov.uk/government/publications/english-surveillance-programme-antimicrobial-utilisation-and-resistance-espaur-report) (2022, accessed 27
15 February 2023).
- 16 6. **HM Government.** Tackling antimicrobial resistance 2019-2024: The UK’s five-year national
17 action plan. [https://www.gov.uk/government/publications/uk-5-year-action-plan-for-](https://www.gov.uk/government/publications/uk-5-year-action-plan-for-antimicrobial-resistance-2019-to-2024)
18 [antimicrobial-resistance-2019-to-2024](https://www.gov.uk/government/publications/uk-5-year-action-plan-for-antimicrobial-resistance-2019-to-2024) (2019).
- 19 7. **Murray CJ, Ikuta KS, Sharara F, Swetschinski L, Robles Aguilar G, et al.** Global burden of
20 bacterial antimicrobial resistance in 2019: a systematic analysis. *Lancet* 2022;399:629–655.
- 21 8. **Gladstone RA, McNally A, Pöntinen AK, Tonkin-Hill G, Lees JA, et al.** Emergence and
22 dissemination of antimicrobial resistance in *Escherichia coli* causing bloodstream infections in
23 Norway in 2002–17: a nationwide, longitudinal, microbial population genomic study. *The*
24 *Lancet Microbe* 2021;2:e331–e341.
- 25 9. **Leekitcharoenphon P, Johansson MHK, Munk P, Malorny B, Skarżyńska M, et al.** Genomic
26 evolution of antimicrobial resistance in *Escherichia coli*. *Sci Rep* 2021;11:1–12.
- 27 10. **Poirel L, Madec J-Y, Lupo A, Schink A-K, Kieffer N, et al.** Antimicrobial Resistance in
28 *Escherichia coli*. *Microbiol Spectr* 2018;6:ARBA-0026-2017.
- 29 11. **Li X, Stokholm J, Brejnrod A, Vestergaard GA, Russel J, et al.** The infant gut resistome
30 associates with *E. coli*, environmental exposures, gut microbiome maturity, and asthma-
31 associated bacterial composition. *Cell Host Microbe* 2021;29:975-987.e4.
- 32 12. **Brodrick HJ, Raven KE, Kallonen T, Jamrozny D, Blane B, et al.** Longitudinal genomic
33 surveillance of multidrug-resistant *Escherichia coli* carriage in a long-term care facility in the
34 United Kingdom. *Genome Med* 2017;9:1–11.

- 1 13. **Kallonen T, Brodrick HJ, Harris SR, Corander J, Brown NM, et al.** Systematic longitudinal
2 survey of invasive *Escherichia coli* in England demonstrates a stable population structure only
3 transiently disturbed by the emergence of ST131. *Genome Res* 2017;27:1437–1449.
- 4 14. **Lau SH, Kaufmann ME, Livermore DM, Woodford N, Willshaw GA, et al.** UK epidemic
5 *Escherichia coli* strains A-E, with CTX-M-15 β -lactamase, all belong to the international
6 O25:H4-ST131 clone. *J Antimicrob Chemother* 2008;62:1241–1244.
- 7 15. **Lipworth S, Vihta KD, Chau K, Barker L, George S, et al.** Ten-year longitudinal molecular
8 epidemiology study of *Escherichia coli* and *Klebsiella* species bloodstream infections in
9 Oxfordshire, UK. *Genome Med* 2021;13:1–13.
- 10 16. **Rodríguez I, Figueiredo S, Sousa M, Aracil-gisbert S, Fernández-de-bobadilla MD, et al.** A 21-
11 Year Survey of *Escherichia coli* from Bloodstream Infections (BSI) in a Tertiary Hospital
12 Reveals How Community-Hospital Dynamics of B2 Phylogroup Clones Influence Local BSI
13 Rates. *mSphere*;6.
- 14 17. **Johnson JR, Urban C, Weissman SJ, Jorgensen JH, Lewis JS, et al.** Molecular epidemiological
15 analysis of *Escherichia coli* sequence type ST131 (O25:H4) and bla CTX-M-15 among extended-
16 spectrum- β -lactamase-producing *E. coli* from the United States, 2000 to 2009. *Antimicrob*
17 *Agents Chemother* 2012;56:2364–2370.
- 18 18. **Nicolas-Chanoine MH, Blanco J, Leflon-Guibout V, Demarty R, Alonso MP, et al.**
19 Intercontinental emergence of *Escherichia coli* clone O25:H4-ST131 producing CTX-M-15. *J*
20 *Antimicrob Chemother* 2008;61:273–281.
- 21 19. **Peirano G, Pitout JDD.** Molecular epidemiology of *Escherichia coli* producing CTX-M β -
22 lactamases: the worldwide emergence of clone ST131 O25:H4. *Int J Antimicrob Agents*
23 2010;35:316–321.
- 24 20. **Day MJ, Hopkins KL, Wareham DW, Toleman MA, Elviss N, et al.** Extended-spectrum β -
25 lactamase-producing *Escherichia coli* in human-derived and foodchain-derived samples from
26 England, Wales, and Scotland: an epidemiological surveillance and typing study. *Lancet Infect*
27 *Dis* 2019;19:1325–1335.
- 28 21. **Ewers C, Grobbel M, Stamm I, Kopp PA, Diehl I, et al.** Emergence of human pandemic
29 O25:H4-ST131 CTX-M-15 extended-spectrum- β -lactamase-producing *Escherichia coli* among
30 companion animals. *J Antimicrob Chemother* 2010;65:651–660.
- 31 22. **Kakkanat A, Totsika M, Schaale K, Duell BL, Lo AW, et al.** The role of H4 flagella in
32 *Escherichia coli* ST131 virulence. *Sci Rep* 2015;5:1–14.
- 33 23. **Decano AG, Ludden C, Feltwell T, Judge K, Parkhill J, et al.** Complete Assembly of *Escherichia*
34 *coli* Sequence Type 131 Genomes Using Long Reads Demonstrates Antibiotic Resistance Gene

- 1 Variation within Diverse Plasmid and Chromosomal Contexts. *mSphere* 2019;4:1–12.
- 2 24. **Kowarik M, Wetter M, Haeuptle MA, Braun M, Steffen M, et al.** The development and
3 characterization of an E. coli O25B bioconjugate vaccine. *Glycoconj J* 2021;38:421–435.
- 4 25. **Szjártó V, Lukasiewicz J, Gozdiewicz TK, Magyarics Z, Nagy E, et al.** Diagnostic potential of
5 monoclonal antibodies specific to the unique O-antigen of multidrug-resistant epidemic
6 Escherichia coli clone ST131-O25b:H4. *Clin Vaccine Immunol* 2014;21:930–939.
- 7 26. **Chorro L, Li Z, Chu L, Singh S, Gu J, et al.** Preclinical Immunogenicity and Efficacy of Optimized
8 O25b O-Antigen Glycoconjugates To Prevent MDR ST131 E. coli Infections. *Infect Immun*
9 2022;90:1–15.
- 10 27. **UK-HSA.** Standards for microbiology investigations (UK SMI).
11 <https://www.gov.uk/government/collections/standards-for-microbiology-investigations-smi>
12 (2021, accessed 27 February 2023).
- 13 28. **Page AJ, Cummins CA, Hunt M, Wong VK, Reuter S, et al.** Roary: Rapid large-scale prokaryote
14 pan genome analysis. *Bioinformatics* 2015;31:3691–3693.
- 15 29. **Nguyen LT, Schmidt HA, Von Haeseler A, Minh BQ.** IQ-TREE: A fast and effective stochastic
16 algorithm for estimating maximum-likelihood phylogenies. *Mol Biol Evol* 2015;32:268–274.
- 17 30. **Lees JA, Kendall M, Parkhill J, Colijn C, Bentley SD, et al.** Evaluation of phylogenetic
18 reconstruction methods using bacterial whole genomes: a simulation based study. *Wellcome*
19 *Open Res* 2018;3:33.
- 20 31. **Hoang DT, Chernomor O, von Haeseler A, Minh BQ, Vinh LS.** UFBoot2: Improving the
21 Ultrafast Bootstrap Approximation. *Molecular biology and evolution. Mol Biol Evol*
22 2018;35:518–522.
- 23 32. **Argimón S, Abudahab K, Goater RJE, Fedosejev A, Bhai J, et al.** Microreact: visualizing and
24 sharing data for genomic epidemiology and phylogeography. *Microb genomics*
25 2016;2:e000093.
- 26 33. **Yu G, Smith DK, Zhu H, Guan Y, Lam TTY.** Ggtree: an R Package for Visualization and
27 Annotation of Phylogenetic Trees With Their Covariates and Other Associated Data. *Methods*
28 *Ecol Evol* 2017;8:28–36.
- 29 34. **Seemann T.** tseemann/snp-dists: Pairwise SNP distance matrix from a FASTA sequence
30 alignment. <https://github.com/tseemann/snp-dists> (2020, accessed 30 July 2020).
- 31 35. **Alcock BP, Raphenya AR, Lau TTY, Tsang KK, Bouchard M, et al.** CARD 2020: Antibiotic
32 resistome surveillance with the comprehensive antibiotic resistance database. *Nucleic Acids*
33 *Res* 2020;48:D517–D525.
- 34 36. **Hunt M, Mather AE, Sánchez-Busó L, Page AJ, Parkhill J, et al.** ARIBA: Rapid antimicrobial

- 1 resistance genotyping directly from sequencing reads. *Microb Genomics* 2017;3:1–11.
- 2 37. **Carattoli A, Zankari E, Garcíá-Fernández A, Larsen MV, Lund O, et al.** In Silico detection and
3 typing of plasmids using plasmidfinder and plasmid multilocus sequence typing. *Antimicrob*
4 *Agents Chemother* 2014;58:3895–3903.
- 5 38. **Inouye M, Dashnow H, Raven LA, Schultz MB, Pope BJ, et al.** SRST2: Rapid genomic
6 surveillance for public health and hospital microbiology labs. *Genome Med* 2014;6:1–16.
- 7 39. **Szjártó V, Guachalla LM, Visram ZC, Hartl K, Varga C, et al.** Bactericidal monoclonal
8 antibodies specific to the lipopolysaccharide O antigen from multidrug-resistant *Escherichia*
9 *coli* clone ST131-O25b:H4 elicit protection in mice. *Antimicrob Agents Chemother*
10 2015;59:3109–3116.
- 11 40. **Maes M, Dyson ZA, Smith SE, Goulding DA, Ludden C, et al.** A novel therapeutic antibody
12 screening method using bacterial high-content imaging reveals functional antibody binding
13 phenotypes of *Escherichia coli* ST131. *Sci Rep* 2020;10:1–13.
- 14 41. **Ludden C, Coll F, Gouliouris T, Restif O, Blane B, et al.** Defining nosocomial transmission of
15 *Escherichia coli* and antimicrobial resistance genes: a genomic surveillance study. *The Lancet*
16 *Microbe* 2021;2:e472–e480.
- 17 42. **Johnson JR, Clermont O, Johnston B, Clabots C, Tchesnokova V, et al.** Rapid and specific
18 detection, molecular epidemiology, and experimental virulence of the O16 subgroup within
19 *Escherichia coli* sequence type 131. *J Clin Microbiol* 2014;52:1358–1365.
- 20 43. **Clermont O, Dhanji H, Upton M, Gibreel T, Fox A, et al.** Rapid detection of the O25b-ST131
21 clone of *Escherichia coli* encompassing the CTX-M-15-producing strains. *J Antimicrob*
22 *Chemother* 2009;64:274–277.
- 23 44. **Dolejska M, Frolkova P, Florek M, Jamborova I, Purgertova M, et al.** CTX-M-15-producing
24 *Escherichia coli* clone B2-O25b-ST131 and *Klebsiella* spp. isolates in municipal wastewater
25 treatment plant effluents. *J Antimicrob Chemother* 2011;66:2784–2790.
- 26 45. **Gomi R, Matsuda T, Matsumura Y, Yamamoto M, Tanaka M, et al.** Occurrence of Clinically
27 Important Lineages, Including the Sequence Type 131 C1-M27 Subclone, among Extended-
28 Spectrum- β -Lactamase-Producing *Escherichia coli* in Wastewater. *Antimicrob Agents*
29 *Chemother*;61.
- 30 46. **Finn TJ, Scriver L, Lam L, Duong M, Peirano G, et al.** A comprehensive account of *escherichia*
31 *coli* sequence type 131 in wastewater reveals an abundance of fluoroquinolone-resistant
32 clade a strains. *Appl Environ Microbiol*;86. Epub ahead of print 2020. DOI:
33 10.1128/AEM.01913-19.
- 34 47. **Munk P, Brinch C, Møller FD, Petersen TN, Hendriksen RS, et al.** Genomic analysis of sewage

1 from 101 countries reveals global landscape of antimicrobial resistance. *Nat Commun*
2 2022;13:7251.
3