

1 **Original Research Article**

2

3 **Silicosis, tuberculosis and silica exposure among artisanal and small-scale miners: A**
4 **systematic review and modelling paper**

5

6 **Running title: Silicosis and tuberculosis in artisanal and small-scale miners**

7 **Author list and affiliations:**

8 1. Patrick Howlett MbChB MSc¹ – p.howlett@imperial.ac.uk

9 2. Hader Mousa MBBS MSc² – Mousa.h@coeha.net

10 3. Bibie Said MD MSc³ – bibiesd90@gmail.com

11 4. Alexander Mbuya MD³ – kiletsa13@gmail.com

12 5. Onn Min Kon MBBS MD FRCP¹ - onn.kon@nhs.net

13 6. *Stellah George Mpagama MD MSc PhD³ – sempagama@yahoo.com

14 7. *Johanna Feary BM BS MSc FRCP PhD¹ – j.feary@imperial.ac.uk

15

16 *Joint final author

17 1. National Heart & Lung Institute, Imperial College London, Guy Scadding Building,
18 Cale Street, London, SW3 6LY

19 2. Centre for Occupational and Environmental Health, KG 975 St H7, REMERA, Kigali,
20 Rwanda

21 3. Kibong'oto Infectious Disease Hospital, Lomakaa road, Sanya Juu, Kilimanjaro,
22 Tanzania

23

24

25 **Corresponding author: Patrick Howlett (patrick.howlett@gmail.com).** National Heart &
26 Lung Institute, Imperial College London, Guy Scadding Building, Cale Street, London, SW3
27 6LY. Tel +44 7793198119.

28

29 **Author contributions:**

30 PH - Writing – Original draft preparation, Conceptualisation, Methodology, Project
31 Administration, Data collection, Data Curation, Visualisation, Formal Analysis

32 HM, BS – Conceptualization, Data curation, Formal analysis, Methodology, Project
33 administration, Writing – review & editing

34 AM - Writing – Review & Editing

35 JF, OM, SM – Supervision, Writing – Review & Editing

36

37 **Financial Disclosure Statement: NA**

38

39 **Keywords: Silicosis, Tuberculosis, Respirable crystalline silica, Quartz, Small-scale mining,**
40 **Mining, Occupational Lung Disease, Respiratory, Silica, Spirometry, Lung function**

41

42 **Word count**

43 **Abstract: words: 292 words**

44 **Manuscript: 3718 words.**

45

47 **Abstract**

48

49 **Background**

50

51 An estimated 44 million artisanal and small-scale miners (ASM), largely based in developing
52 economies, face significant occupational risks for respiratory diseases. We aimed to review
53 studies that describe silicosis and tuberculosis prevalence and respirable crystalline silica
54 (RCS) exposures among ASM and use background evidence to attempt to understand the
55 relationship between exposures and disease outcomes.

56

57 **Methods**

58

59 We searched PubMed, Web of Science, Scopus and Embase for studies published before the
60 24th March 2023. Our primary outcome of interest was silicosis or tuberculosis among ASM.
61 Secondary outcomes included measurements of respirable dust or silica, spirometry and
62 prevalence of respiratory symptoms. A systematic review and narrative synthesis was
63 performed and risk of bias assessed using the Joanna Briggs Prevalence Critical Appraisal
64 Tool. Logistic and Poisson regression models with predefined parameters were used to
65 estimate silicosis prevalence and tuberculosis incidence at different distributions of
66 cumulative silica exposure.

67

68 **Results**

69

70 We identified 18 eligible studies that included 29,562 miners from 13 distinct populations in
71 10 countries. Silicosis prevalence ranged from 11 to 37%, despite four of five studies
72 reporting an average median duration of mining of <6 years. Tuberculosis prevalence was
73 high; microbiologically confirmed disease ranged from 1.8 to 12% and clinical disease 3.0 to
74 17%. Average RCS intensity was very high (range 0.19-89.5 mg/m³) and respiratory
75 symptoms were common. Our modelling demonstrated decreases in RCS result in
76 reductions in silicosis and tuberculosis, with greater effects at higher mean exposures.

77

78 **Discussion**

79

80 Despite potential selection and measurement bias, prevalence of silicosis and tuberculosis
81 were high in the studies identified in this review. Our modelling demonstrated the greatest
82 respiratory health benefits of reducing RCS are in those with highest exposures. ASM face a
83 high occupational respiratory disease burden which can be reduced by low-cost and
84 effective reductions in RCS.

85

86 Introduction

87

88 Silicosis is an incurable fibrotic lung disease caused – in a dose-dependent manner – by
89 exposure to respirable crystalline silica (RCS). It usually presents decades after exposure, but
90 high exposures can lead to accelerated disease and respiratory failure within 1-2 years(1). It
91 represents an under-estimated emerging public health threat in developing economies(2).
92 In 2021, 1.6 million people died from tuberculosis (TB), the majority of whom lived in
93 developing economies(3). Supported by mechanistic evidence(4), the risk of TB in those with
94 silicosis is 2.9-5.6 times higher than those without silicosis and RCS exposure is a further,
95 independent risk factor for TB(5). Human immunodeficiency virus (HIV) and RCS are risk
96 factors for TB that combine multiplicatively with silicosis(6,7). The structure of these
97 associations is represented in a directed acyclic graph (Fig 1). Silica exposure is also
98 associated with lung cancer, chronic obstructive pulmonary disease, respiratory symptoms,
99 autoimmune disease and renal disease(8). In view of these risks, many countries have
100 enacted strict RCS exposure limits. For example, the United States Occupational Safety and
101 Health Administration enforces a permissible exposure limit of 0.05 mg/m³(8–10).

102

103 **Figure 1. A simplified directed acyclic graph (DAG) describing the relationship between**
104 **silica exposure, silicosis, tuberculosis, HIV, respiratory symptoms and lung function.** The
105 boxes in red are the outcomes included in this systematic review.

106

107 An estimated 44 million artisanal and small-scale miners (ASM) worldwide are almost
108 exclusively based in developing economies(11). The sector's key role in supporting
109 development is recognised by the United Nation's sustainable development goals, the
110 World Bank and African Union(12). Small-scale mining represents a large and integral
111 component of the world's economy, for example producing 20% of global gold(11,13).

112

113 Despite the understanding that health risks are high and occupational health services
114 sparse(14,15), the true occupational risks of ASM are not well described. A recent scoping
115 review found relatively few studies, with a focus on mercury exposure in gold mining. In
116 particular, dust exposure and respiratory and communicable diseases were under-
117 researched(13).

118

119 Many studies of large-scale miners (LSM) have been performed, however, in this systematic
120 review we focus only on ASM populations as we believe the exposures and occupational
121 respiratory outcomes are distinct from LSM. More precisely, we hypothesise that high RCS
122 exposures lead to a high prevalence of silicosis and tuberculosis which is associated with
123 abnormal spirometry and a high respiratory symptom burden. Higher background TB and
124 HIV rates compounds these exposure risks.

125

126 Observational studies linking individual exposures, silicosis risk and TB incidence among LSM
127 are comprehensive and generally good quality(16,17). However, we are not aware of similar
128 observational data for ASM and no interventional studies linking dust reduction to
129 respiratory outcomes in any setting have been reported.

130

131 In this systematic review therefore, among ASM, we aim to describe 1) the prevalence of
132 silicosis and tuberculosis, 2) occupational exposures to respirable dust and silica 3)

133 spirometry findings, and 4) the prevalence of respiratory symptoms. As we expect few
134 eligible studies, we believe the holistic approach of this review improves our ability to build
135 a picture of the respiratory health of ASM and, as the outcomes are related (Fig 1), improve
136 our ability to infer plausibility of respective findings. In the second part of our study, we aim
137 to model silicosis prevalence and TB incidence with respect to RCS exposures compatible
138 with our review and risks observed in previous studies. This will allow us to observe disease
139 risks in counter-factual scenarios and contextualise silicosis and TB estimates from our
140 systematic review.

141

142

143

144

145

146 **Methods**

147

148 **Search strategy and selection criteria**

149

150 We searched PubMed, Embase, Web of Science and Scopus for studies published prior to
151 24th March 2023. Our search strategy was broad and structured using population terms (e.g
152 (mining or mine*).mp) and respiratory terms (e.g. exp/. Respiratory system); the full
153 strategy is in S1 File. The review was registered at PROSPERO
154 (<https://www.crd.york.ac.uk/prospero/>) ID: CRD42023394100.

155

156 We included original research papers that recruited small-scale miners and reported one or
157 more of (1) silicosis prevalence, (2) tuberculosis prevalence, (3) a measure of respirable
158 crystalline silica or dust exposure, (4) spirometry values, or (5) respiratory symptom
159 prevalence. We excluded case reports or series, systematic reviews and meta-analyses and
160 qualitative studies. We excluded papers that focused on processing of materials (e.g. stone
161 carvers).

162

163 We used the Covidence platform to manage the study inclusion process. After merging the
164 four database searches and removing duplicates, two reviewers (PH and either HM or BS)
165 independently reviewed the titles and abstracts and subsequently full texts in parallel, with
166 any disagreements resolved by group discussion. Our PRISMA checklists are provided in S2
167 File.

168

169 **Data analysis**

170

171 One team member (either PH or HM) independently extracted study characteristics and
172 performed quality assessment; this was checked by another team member and
173 disagreements resolved by group consensus. Our data extraction and quality assessment
174 tools are presented in the S3 File. We used the categorical cut off reported in the study to
175 define silicosis prevalence and extracted self-reported silicosis separately. Microbiological
176 TB prevalence required any of smear microscopy, GeneXpert or culture positivity. Clinical
177 prevalence additionally included treatment based on symptoms or imaging. Concentration
178 (mg/m^3) and duration of measurement of respirable silica dust exposures were extracted.
179 Spirometry values were extracted as presented. We chose *a priori* to extract prevalence of
180 shortness of breath (at rest), cough and wheeze as respiratory symptoms. In cases where
181 additional information or clarification was needed authors were contacted.

182

183 For quality assessment, we used the Joanna Briggs Institute Prevalence Critical Appraisal
184 Tool(19) (see S3 File). We changed from the adapted Newcastle-Ottawa scale, described in
185 our protocol, as we found it more applicable, rigorous and relevant for prevalence
186 studies(20). We tested for bias separately for each outcome.

187

188 **Data synthesis**

189

190 Using the meta package in R (version 4.2.2) we performed a meta-analysis of three
191 outcomes; silicosis prevalence, clinical TB prevalence and microbiological TB prevalence. We

192 used a logit transformation of prevalence and then a generalised linear mixed-effects model
193 to estimate the pooled effects(21). Random-effects allowed for expected between study
194 heterogeneity. The variance of the true effect was estimated using maximum likelihood
195 method. Individual study confidence intervals were estimated with the Clopper-Pearson
196 method. As the number of studies was low and a priori heterogeneity expected to be high,
197 the Knapp-Hartung adjustment was applied(22). Heterogeneity was assessed using the I^2
198 statistic. Prevalence estimates were visualised using forest plots and systematic differences
199 according to variance by funnel plots.

200

201 **Modelling of silicosis prevalence and annual TB incidence**

202

203 In the logistic regression equation (1) p_1 (the probability of silicosis) is calculated using the
204 following parameters: Baseline silicosis risk when RCS exposure is zero was estimated at 2%
205 (17, 23). B_1 is the odds of silicosis per 1 mg/m³-years increase in cumulative exposure of RCS
206 and equal to 1.3(24–27). The probability of silicosis according to cumulative RCS values, at
207 different odds ratios is visualised in S4 Fig. The distribution of cumulative RCS exposure
208 (mg/m³-years) has a positive skew, which diminished as the mean concentration increased.
209 Illustrative distributions are provided in S5 Fig.

210

211 Equation 1:

212

$$213 \text{Logit}(p_1) = \text{Baseline silicosis risk} + (B_1 * \text{Cumulative RCS exposure}) \quad (1)$$

214

215 In the Poisson regression equation (2), the following parameters are used to calculate p_2
216 (the probability of tuberculosis): Baseline annual tuberculosis incidence was 200 cases per
217 100,000 persons(28). B_1 is the odds of TB per 1 mg/m³-years increase in cumulative RCS
218 exposure and was set at 1.05(5,7). B_2 is the odds of TB in the presence of silicosis compared
219 to those without silicosis and was set at 4(5). Silicosis prevalence was determined by
220 formula 1. B_3 is the odds of TB in the presence of HIV infection compared to those without
221 HIV infection and was set at 4(6,29). HIV prevalence is randomly distributed in the
222 population with a default prevalence of 2%.

223

224 Equation 2:

225

$$226 \text{Log}(p_2) = \text{Baseline annual TB incidence} + (B_1 * \text{RCS exposure}) + (B_2 * \text{silicosis}) + (B_3 * \text{HIV}) \quad (2)$$

227

228

229 Detailed justification for the parameter assumptions made in both models are described in
230 the S6 File.

231

232 To allow interaction, this model is published using the shiny package and is available
233 (https://phowlett.shinyapps.io/sil_tb_app/).

234

235 Results

236

237 Study selection

238

239 From a total of 357 titles and abstracts, 56 studies were full-text screened and 18 eligible
240 studies of 13 distinct populations from 10 countries included in our analysis (Fig 2)(30–47).
241 Of these studies, six reported on silicosis prevalence(30–35), six on tuberculosis
242 prevalence(33–38), eight on dust or respirable silica exposures(30,32,39–44), three on
243 spirometry findings(39,46,47) and three on respiratory symptoms(32,43,45). There was
244 moderate agreement for title and abstract review, Cohen’s kappa of 0.56 (HM) and 0.49
245 (BS). For full text reviews, Cohen’s kappa was 0.80 (HM) and 0.28 (BS), indicating at least fair
246 agreement.

247

248 **Figure 2. PRISMA diagram of the identification, screening and inclusion process for our**
249 **systematic review**

250

251 Study characteristics

252

253 The number of ASM enrolled in all 14 clinical studies ranged from 18 to 21,136 participants
254 (median 441, IQR 258 – 867) with an overall total of 29,562 participants. There were 14
255 studies from Africa (33–46), two studies from Asia(30,47) and two from South
256 America(31,32). Most of the included studies were in gold (10/18) and gemstone (5/18)
257 mining communities and were exclusively underground (10/18) or both under and above
258 ground ASM (5/18). In those reporting age, the summary statistic ranged between 24.4 and
259 40.1 years. In studies reporting sex, five studies included only male miners(30–32,35,39)
260 while in five other studies the majority (59-85%) were male(33,34,36,45,47). All studies
261 except one were of active miners. The mean or median duration of exposure ranged
262 between 4.0-7.3 years in all bar one study(31). The prevalence of smoking ranged from 16-
263 58% in eight studies(30–35,39,43,45,47). Given the importance of this finding, it is
264 summarised in supplementary material table 2.

265

266 Silicosis prevalence, RCS exposures and latency

267

268 The prevalence of radiologically defined silicosis was reported in five studies(30,31,33–35)
269 and ranged between 11-37%, with a total of 1116/5572 cases (see Table 1 and Fig 3). The
270 pooled estimate was 23.9% (95% 13.9, 38.0) however the heterogeneity was very high (I^2
271 97%). Four studies defined silicosis as ILO $\geq 1/0$ with a mixture of trained and un-trained
272 readers(30,31,33,34); one study used an experience radiologist diagnosis(35). One study
273 reported found a self-reported silicosis prevalence of 27/258 (10.5%)(32).

Author, year	Study country, period	Study design	Population	Sample size	Sampling method	Silicosis definition	TB screening and diagnosis methods	Age (years), sex (%)	Duration of mine exposure (years)	Silicosis prevalence (%)	TB prevalence (%)	Notes
Silicosis only												
Tse, 2007(30)	China, 1997-2001	Cross-sectional	Retired underground gold ASM rock-drillers	583	Complete sample of rock-drillers	Consensus of two readers; ILO >1/0	-	All male. Age at first service 24.4 SD +/- 6.7 years	5.6 (SD 2.4) years	170/583 (29.1%)	-	Follow up 3-7 years after finishing work
Souza, 2017(31)	Brazil, 2013-2014	Cross-sectional	Current and retired underground precious stone ASM	348	Sequential sample of registered miners attending annual screening	Two readers (kappa = 0.91); ILO >1/0	-	Mean 40.1 (SD +/- 11.9) years, all male	20.4 (SD 12.8) years	129/348 (37%)	-	All absent (17/348, 4.9%) and retired (25/348, 7.2%) workers had silicosis
Souza, 2021(32)	Brazil, 2017-2018	Cross-sectional	Current underground precious stone ASM	258	Miners from 49/277 randomly selected mines	Self-reported silicosis	-	Mean 40 (SD +/- 16.0) years, all male	177/258 (69%) ≤20 years of work	27/258 (10.5%) *self-reported	-	
Silicosis and TB												
Moyo, 2021(33)	Zimbabwe, 2020-2021	Cross-sectional	Current above and below ground gold ASM	514	Miners attending TB outreach screening and hospital occupational health clinic	Medical officer interpretation, checked by specialist physician; ILO >1/0	Symptom and CXR screen. One Xpert sample	Mean 37.0 (SD +/- 12.7) years, 435/514 (85%) male	4 (IQR 0.02-33) years. 352/514 (69%) < 10 years	52/464 (11.2%)	Microbiological: 9/422 (2.1%) Clinical: 17/422 (4.0%)	HIV prevalence 90/373 (24%)
Moyo, 2022(34)	Zimbabwe, 2020-2022	Cross-sectional	Above or underground gold and chrome ASM	3950	Miners attending TB outreach screening and hospital occupational health clinic	Medical officer interpretation, checked by specialist physician; ILO >1/0	Symptom and CXR screen. One Xpert Ultra sample	Mean 35.5 (SD +/- 12.1) years, 3245/3950 (85%) male	5 (IQR 2.8-10.8) years	666/3547 (18.8%)	Microbiological: 83/3547 (2.5%) Clinical: 240/3547 (6.8%)	HIV prevalence 460/2568 (18%)
Mbuya, 2023(35)	Tanzania, 2019-2021	Cross-sectional	Below ground gemstone ASM	330	15 randomly sampled miners from 22 randomly chosen mines	As defined by radiologist with significant occupational experience	Systematic testing with one Xpert test	Median 35.0 (IQR 30.0-44.0), All male	Median 5.0 (IQR 4.0-7.0)	99/330 (30%)	Microbiological: 20/330 (6.1%)	HIV prevalence 6/330 (1.8%). Community TB prevalence 26/330 (7.9%)
TB only												
Rambiki, 2020(36)*	Malawi, 2019	Cross-sectional	Active under and above ground ASM	934	Miners attending TB screening programme	-	Symptom screen then CXR, two	-	-	-	Microbiological: 46/892 (5.2%) Clinical:	LSM TB prevalence 22/1032 (2.1%)

							sputums initial smear; if negative Xpert				152/892 (17%)	
Ohene, 2021(37)	Ghana, 2017-2018	Cross-sectional	Under and overground gold ASM	844	Miners attending outreach screening program	-	Symptom screen and CXR. One Xpert sample	-	-	-	Microbiological: 23/844 (2.7%) -	Community TB prevalence 72/9597 (0.7%)
Abeid, 2022(38)	Tanzania, 2017-2020	Cross-sectional	Underground gold ASM	21,136	Miners attending TB screening programme	-	Symptom screen. One Xpert or smear sample	-	-	-	Microbiological: 380/21,136 (1.8%) Clinical: 630/21,136 (3.0%)	HIV prevalence 110/494 (22.7%). Community TB prevalence 904/100,461 (0.9%)

275

276

277

278

279

280

Table 1. Characteristics of studies reporting silicosis and/or tuberculosis prevalence estimates among ASM. Abbreviations: ILO = International Labour Organisation. ASM = Artisanal and small-scale miners. LSM = Large-scale miners. SD = standard deviation. IQR = interquartile range. CXR = chest X-ray. TB = Tuberculosis. HIV = Human immunodeficiency virus
 * In the study of Rambiki et al. in the whole study of ASM and LSM the most frequent category was 570 participants aged 25-34 (28%), 1426/2013 (71%) were male and most worked for between 0-3.5 years (1125/2013, 56%). HIV prevalence was 29/1438 (2.0%).

281 **Figure 3. Forest plot of silicosis prevalence in studies of ASM miners.**

282

283 One study of gold miners in China(30) found a silicosis prevalence of 170/583 (29.1%) with a
284 median RCS exposure of 89.5 mg/m³ (range: 70.2-108.8 mg/m³). A study of Amethyst
285 miners in Brazil reported a median RCS exposure of 1.6 mg/m³(32); self-reported silicosis
286 prevalence was 27/258 (10.5%) although previous radiological prevalence in the same
287 population was 129/348 (37%)(31). Median RCS exposures in gemstone miners in Tanzania
288 were 1.0 mg/m³ (IQR 1.2-3.2) and 2.4 mg/m³ (IQR 0.7-1.4) dependent on the activity(40)
289 and silicosis prevalence in a random sample from the population was 99/330 (30%)(35).

290

291 Four of the six studies reported a mean or median duration were below 5.6 years(30,33–
292 35). One study found all (32/348, 12.1%) participants attending annual screening who were
293 temporarily absent or retired had silicosis(31).

294

295 **Tuberculosis**

296

297 The prevalence of microbiologically defined TB among ASM was reported in six studies(33–
298 38), all from the African continent, and ranged from 1.8-6.1% with a total of 618/27,171
299 cases of TB (see Table 1 and Fig 4). Clinically defined TB was reported in 4 of these studies
300 (33,34,36,38) and ranged from 3.0-17% prevalence with a total of 1039/25,997 cases (see
301 figure 4B). The pooled estimates for microbiological and clinical TB were 3.5% (95% CI 1.7,
302 7.1%) and 6.2% (95% CI 2.0, 17.6%), respectively, with very high heterogeneity of both
303 estimates (*I*² 98% and 99%, respectively). For microbiological confirmation of TB, studies
304 used GeneXpert NAAT testing, although one study reported using smear microscopy if Xpert
305 was not available(38). Two studies included miners attending a facility and outreach
306 screening(33,34), three recruited from outreach-based screening only(36–38) and one used
307 randomised sampling(35). Notably, one study found miners attending a facility were
308 reported to have an increased risk of TB and silicosis, prevalence ratio 10.3 (95% CI 7.6,14.0)
309 and 1.5 (95% CI 1.3,1.7) respectively, compared to outreach(34). Only one study reported
310 that study just under half (49.6%) had sputum samples available when clinically
311 indicated(38); other studies were not able to provide these results when requested. HIV
312 prevalence in the ASM populations varied significantly between 1.8-24% though was often
313 missing (0-97% of participants)(33–36,38). In three studies TB prevalence was higher in ASM
314 than in the community or LSM(36–38), however one study reported a slightly higher
315 prevalence among community members (7.9% vs 6.1%)(35).

316

317 **Figure 4. Forest plot of A. microbiological tuberculosis prevalence and B. clinical**
318 **tuberculosis in studies of ASM miners**

319

320 **Exposures**

321

322 Average RCS concentrations ranged between 0.19 and 89.5 mg/m³ and were reported in
323 four different ASM communities across three countries; Tanzania(40,41), China(30) and
324 Nigeria(44) (see Table 2). Reported sampling times ranged between 4 to 8 hours. In one
325 interventional study among gold miners, introducing wet methods during crushing led to an
326 80% reduction in respirable silica concentration from 0.81 (SD +/- SD 0.35) mg/m³ to 0.06
327 mg/m³ (SD +/- SD 0.05) (44).

Author, year	Study country, period	Study design	Population	Sample size	Sampling method	Dust measurement method	RCS measurement (mg/m ³)*	Dust measurement (mg/m ³)
Bratveit, 2003(40)	Tanzania, 2001	Cross-sectional	Underground gemstone ASM	15 samples (9 for silica); 10 on day 1 and 2 – drilling and blasting - (6 for silica and 5 on day 3 – loading - (3 for silica)	Opportunistically selected miners over three consecutive days from one selected mine	Shift personal air samples, gravimetric analysis and analysed using NIOSH method 7500. Sampling time 5-8 hrs.	Day 1 and 2: Median 2.4 (IQR 1.2 – 3.2) Day 3: Median 1.0 (IQR 0.7 to 1.4)	Day 1 and 2: Median 15.5 (IQR 10.4 - 21.2) Day 3: Median 4.3 (IQR 3.7 – 7.4)
Osim 1999(39)	Zimbabwe, no date described	Exposure-control	Above and below ground chrome ASM, chrome LSM and community controls	4 ASM sites, 4 LSM sites and 4 control sites	Not described	Samples taken from middle of each site for 4 hours with gravimetric dust sampler air flow of 2L per hour for 4 hours		ASM: 6.0 +/- SD 0.5 LSM: 0.5 +/- SD 0.3 Community: 0.3 +/- SD 0.1
Tse, 2007(30)	China, 1997-2001	Cross-sectional	Retired underground gold ASM rock-drillers	Unclear number of samples	Not described; government collected samples	Not described. No direct silica measurement; estimated from silica and respirable fraction	89.5 (range 70.2-108.8)	-
Gottesfeld, 2015(41)	Tanzania, 2015	Cross-sectional	Above and below ground gold ASM doing mining and processing	32 samples	Mines and miners in five selected ASM villages	Shift personal air samples, and stationary above ground worksites analysed using NIOSH method 7500. Sampling time above ground: 190 mins (SD 73). Below ground: 311 mins (SD 137)	Above ground: 0.19 (SD 0.20) Below ground: 16.85 (SD 8.74).	Above ground: 1.00 (SD 0.75) Below ground: 93.78 (SD 67.56)
Mayala, 2016(42)	Tanzania, 2016	Cross-sectional	Underground gemstone ASM	5 samples	Chosen on safety, availability, trust of researchers, knowledge of managers and accessibility	A "dust detector" was set at the workface during shovelling and loading for 4 hours	-	8.0 (SD 1.3)
Leon-Kabamba, 2018(43)	Democratic Republic of Congo, 2016	Exposure-control	Above ground coltan ASM and government office workers	Not described	Three samples taken at each mining site and each office setting	PM 2.5 measurement using air quality monitor (Light Scattering Method – Bramc BR- AIR-329). Sampling time not described	-	ASM sites: 0.197 (range 0.180-0.210) Office sites: 0.029 (range 0.019-0.024)
Gottesfeld, 2019(44)	Nigeria, 2016	Pre and post intervention	Underground ASM gold miners in whom a lead poisoning outbreak was reported	29 mining and processing air samples; 18 before intervention, 11 after interventions	Voluntary participation	Shift personal air samples collected using NIOSH method 7500. Sampling time dry 265-376 mins, wet spray 352-430 mins, wet stream 109-380, mining 333-393 mins.	Mining: 0.2 +/- SD 0.14 Dry processing: 0.81 +/- SD 0.7 Wet spray processing: 0.16 +/- SD 0.1 Wet stream processing: 0.06 +/- SD 0.06	-

Souza, 2021(32)	Brazil, 2017-2018	Cross-sectional	Current underground precious stone ASM	Unclear number of samples from 2 mines	Selected mines from random sample of 49 mines	Shift personal air and fixed-point samples collected using Brazil occupational hygiene method NH008. Sampling time not described	Median 1.6 mg/m ³ +/- IQR 0.41#	Median 13.1 +/- SD 0.55
-----------------	-------------------	-----------------	--	--	---	--	--	-------------------------

329 **Table 2. Characteristics of studies reporting RCS and/or dust exposure estimates among ASM.** Abbreviations: NIOSH = National Institute for
 330 Occupational Safety and Health. ASM = Artisanal and small-scale miners. LSM = Large-scale miners. PM = particulate matter. SD = standard
 331 deviation. IQR = interquartile range.

332 * All silica and dust measurements are arithmetic mean values unless otherwise specified as the median

333 # This is presented as reported; attempts were made to contact the authors to clarify this statistic however no response was received.

334 **Spirometry**

335

336 Spirometry results were reported by three studies, which all provided control
337 groups(39,46,47) (see S7 Table). One study, from Zimbabwe, found significantly lower raw
338 FEV1 and FVC results in ASM than both LSM and community controls and higher dust
339 concentrations in ASM ($6.0 \pm 0.5 \text{ mg/m}^3$) compared to LSM ($0.5 \pm 0.1 \text{ mg/m}^3$)(39). Two
340 other studies demonstrated no significant difference between ASM and community
341 controls(46,47).

342

343 **Symptoms**

344

345 Three studies reported the prevalence of shortness of breath was between 3.6-27.6% and
346 cough between 25.2%-47.7%(32,43,45) (see S8 Table). Wheeze prevalence was 42.7% in a
347 single study(43). All respiratory symptoms were more commonly reported by miners than
348 LSM and community controls(43,45). Additionally, two studies reported a high prevalence of
349 rhinitis of 41.4%(45) and 70.4%(43).

350

351 **Study quality**

352

353 Selection bias due to the lack of systematic or randomised approaches and inclusion of
354 facility-based participants was a recurrent issue (Table 3). Within individual outcomes,
355 validity of silicosis diagnosis and the application of outcome measurement for TB (for
356 example, the lack of reporting of sputum availability) were recurrent issues. For exposure
357 measurements, no study provided a systematic or randomised approach to sampling or
358 sample size calculation. For spirometry and symptom outcomes, statistical errors, sample
359 size issues and risk of selection bias reduced quality. The funnel plots (S9 Fig.) do not
360 suggest systematic change in outcome by standard error although inference is limited by
361 high heterogeneity and small sample sizes.

362

Study	Sample frame appropriate	Recruitment process	Sample size	Subject and setting description	Sufficient coverage	Valid outcome methods	Standardised outcome measurement	Appropriate statistics	Adequate response rate
Silicosis									
Tse 2007(30)	Yes	Yes	Yes	Yes	Yes	Yes	Yes	Yes	Yes
Souza 2017(31)	Yes	No	Yes	Yes	Unclear	Yes	Yes	Yes	No
Souza 2021(32)	Yes	Unclear	Yes	Yes	Unclear	No	Unclear	Unclear	Unclear
Moyo 2021(33)	Yes	Unclear	Yes	Yes	Unclear	Unclear	Yes	Yes	Unclear
Moyo 2022(34)	Yes	No	Yes	Yes	Unclear	Unclear	Yes	Yes	Unclear
Mbuya 2023(35)	Yes	Yes	Yes	Yes	Yes	No	Yes	Yes	Unclear
TB									
Rambiki 2020(36)	Yes	No	Yes	Yes	Unclear	Yes	Unclear*	Yes	Unclear
Moyo 2021(33)	Yes	Unclear	Yes	Yes	Unclear	Yes	Unclear*	Yes	Unclear
Ohene 2021(37)	Yes	No	Yes	No	Unclear	Yes	Unclear*	Yes	Unclear
Moyo 2022(34)	Yes	No	Yes	Yes	No	Yes	Unclear*	Yes	Unclear
Abeid 2022(38)	Yes	No	Yes	No	Unclear	Yes	Unclear*	Yes	Unclear
Mbuya 2023(35)	Yes	Yes	Yes	Yes	Yes	Yes	Unclear*	Yes	Unclear
Dust									
Osim 1999(39)	Yes	No	No	Yes	Unclear	Yes	Yes	Yes	Unclear
Bratveit 2003(40)	Yes	No	No	Yes	No	Yes	Yes	Yes	Unclear
Tse 2007(30)	Unclear	Unclear	Unclear	Unclear	Unclear	Unclear	Unclear	Yes	Unclear
Gottesfeld 2015(41)	Yes	No	No	Yes	No	Yes	Yes	Yes	Unclear
Mayala 2016(42)	Unclear	No	No	Yes	No	Unclear	Unclear	No	Unclear
Leon-Kamamba 2018(43)	Yes	Yes	No	Yes	No	Yes	Yes	Yes	Unclear
Gottesfeld 2019(44)	Yes	Unclear	No	Yes	Unclear	Yes	Yes	Yes	Unclear
Souza 2021(32)	Yes	Unclear	No	Yes	Unclear	Yes	Yes	No	Unclear
Spirometry									
Osim 1999(39)	Yes	No	No	Yes	Unclear	Yes	Yes	Yes	Unclear
Rajae 2017(46)	Yes	Yes	No	Yes	Unclear	Yes	Yes	Yes	Unclear
Kyaw 2020(47)	No	Unclear	No	Yes	Unclear	No	Unclear	No	Unclear
Symptoms									

Leon Kabamba 2018(43)	Yes	Yes	No	Yes	No	Yes	Yes	Yes	Unclear
Ralph 2018(45)	Yes	No	No	Yes	Unclear	Yes	Yes	No	Unclear
Souza 2021(32)	Yes	Unclear	Yes	Yes	Unclear	Yes	Yes	No	Unclear
Abeid 2022(38)	Yes	No	Yes	No	Unclear	Yes	Yes	Yes	Unclear

363

364

365

366

367

Table 3. Risk of bias assessed by the Joanna Briggs Institute checklist of studies reporting prevalence data. Green shading indicates the study did achieve the quality assessment criteria and therefore is not at risk of bias. Red shading indicates it did not achieve the quality criteria and is therefore at risk of bias. Orange shading indicates it was unclear and therefore the possibility of risk exists.

* In these studies, how many participants provided sputum samples when indicated and/or had Xpert or smear testing is not clear

368 Modelling

369

370 First, we modelled silicosis prevalence and TB incidence at distributions of RCS with mean
371 values between 0 and 20 mg/m^3 -years, at stepwise increments of 0.01 mg/m^3 -years and
372 with a sample size of 10,000 per simulation. We repeated this at RCS and silicosis
373 associations of OR 1.2, 1.3 and 1.5 (Fig 5A and 5B and S10 Table). For all three odds ratios
374 the prevalence of silicosis and TB incidence increased with cumulative RCS, with a higher
375 rate of increase at higher odds. Second, we estimated annual TB incidence at varying
376 baseline HIV prevalence estimates (2%, 4% and 20%) and assumed either a two- or four-fold
377 increased odds of TB disease for in the presence of HIV infection (Fig 5C and 5D,
378 respectively). In these models the annual incidence of tuberculosis increased with HIV
379 prevalence. Given the multiplicative relationship between RCS, silicosis and HIV(6,7), the
380 effect of HIV on TB incidence becomes more pronounced at higher cumulative RCS
381 exposures. In all scenarios, if mean cumulative RCS is reduced the corresponding reductions
382 in silicosis prevalence or TB incidence are greatest at higher mean cumulative RCS
383 exposures.

384

385 **Figure 5. Simulated estimates of number of silicosis cases and annual tuberculosis (TB)**
386 **cases at cumulative RCS distributions of increasing mean values.** Silicosis prevalence and
387 TB incidence was estimated for sample sizes of 10,000 at mean RCS values between 0 and
388 20, at intervals of 0.01 mg/m^3 -year. Variables in the model are held constant, unless
389 otherwise stated, at values of: a baseline silicosis prevalence of 2%, an increased odds of 1.3
390 of silicosis per 1 mg/m^3 -year increase in RCS exposure, a baseline TB incidence of 200 cases
391 per 100,000 per year, an increased odds of 1.05 of TB per 1 mg/m^3 -year increase in RCS
392 exposure, an increased odds of TB of 4x in those with silicosis, a randomly distributed
393 baseline prevalence of HIV of 2% and an increased odds of TB of 4x in those with HIV. Curves
394 are smoothed using local polynomial regression, for ease of viewing. In plot A, the silicosis
395 prevalence (%) by distributions of increasing mean cumulative RCS (mg/m^3 -year) is
396 estimated at three different strengths of association between RCS exposure and silicosis of
397 OR 1.2, 1.3 and 1.5. In plot B, annual tuberculosis cases are estimated at the same three
398 different strengths of association between mean cumulative RCS (mg/m^3 -year) and silicosis
399 (OR 1.2, 1.3 and 1.5). In plot C, estimates of annual tuberculosis cases are estimated at
400 distributions of increasing mean cumulative RCS (mg/m^3 -year), at HIV prevalence of 2%, 6%
401 and 20%, the modelled association between HIV and TB is an OR of 2. In plot D, annual
402 tuberculosis cases are again estimated at distributions of increasing mean cumulative RCS
403 (mg/m^3 -year) and an HIV prevalence of 2%, 6% and 20%, however the strength of
404 association between HIV and TB is an OR of 4.

405

406 Discussion

407

408 Our systematic review demonstrates that artisanal and small-scale miners face a significant
409 occupational respiratory health burden. Silicosis prevalence ranged from 11-37%, despite
410 four of five studies reporting a mean or median duration of mining of less than 6 years.
411 Microbiologically confirmed TB ranged between 1.8-6.1% and clinical TB between 3.0-17%.
412 The plausibility of these findings is increased by evidence of very high RCS exposures (0.19 -
413 89.5 mg/m³) and prevalent respiratory symptoms. A further important finding is that
414 smoking is common among ASM (prevalence range 17-58%), highlighting a vital need for
415 smoking cessation interventions.

416

417 A previously reported review of 10 representative LSM cohorts found median RCS exposures
418 ranged between 0.02-0.59 mg/m³, with median lifetime exposures of 0.7-11 mg/m³-
419 years(48). Corresponding lifetime prevalence of silicosis in five of these cohorts ranged from
420 4.5-21% (27,49–51). None of our studies estimated individual or lifetime exposures,
421 however the average RCS exposures (0.19-89.5 mg/m³) and silicosis prevalence (11-37%) are
422 higher than the LSM cohorts. It is of concern that silicosis prevalence was so high, despite
423 the short exposure durations and latency in our review. This observation may reflect an
424 increased risk of silicosis at higher intensities of RCS, as has been observed in miners(27,52)
425 and other silica exposed industries(53,54).

426

427 A recent review of 12 national surveys in Africa found TB prevalence ranged from 0.11-
428 0.63%(55). Longitudinal studies of gold miners in large-scale South African gold mines
429 reported annual incidence estimates of between 600 per 100,000 in the very early HIV era
430 to over 2000 per 100,000 during the late 1990s(56–58). In our review, although estimates
431 varied, TB prevalence among ASM is likely higher than the general population and possibly
432 comparable to gold miners in South Africa during the peak of the HIV pandemic, prior to
433 ART introduction. One study reported a higher TB prevalence among the peri-mining
434 community than miners (7.9% vs 6.1%)(35) and community prevalence from other studies,
435 although lower than ASM(36,37), was still higher than expected. This points to the public
436 health concern of community transmission from miners(59).

437

438 Both silicosis and TB prevalence in our studies may be overestimated. Selection bias clearly
439 resulted in over-representation of TB and silicosis at healthcare facility screening(34); only
440 one study used a systematic or randomised approach to sampling(35). Both silicosis and TB
441 may be over diagnosed in the presence of each other on Chest Xray (CXR) particularly, but
442 not exclusively, by less experienced readers(60). Clinical diagnosis of TB in the presence of
443 symptomatic silicosis is also challenging. The use of Xpert Ultra may be associated with
444 reduced specificity of microbiological TB, particularly in recurrent disease(61). Conversely,
445 TB and silicosis may be underestimated. Autopsy evidence suggests radiographic silicosis
446 remains systematically underdiagnosed, more so at high RCS exposures(62). Symptom
447 screening may miss up to 50% of prevalent infectious cases of TB(63). Furthermore, in most
448 studies, it was not clear how many participants who screened positive were able to provide
449 sputum samples. Finally, healthy worker bias may contribute to underestimation of both
450 silicosis and tuberculosis(31).

451

452 Very high heterogeneity in our meta-analysis precludes inference from these results,
453 however consistent finding of high exposures, disease prevalence and symptoms increases
454 confidence in our main finding of a high burden of occupational respiratory disease.
455 Spirometry findings were equivocal, however this does not provide strong evidence against
456 our main finding for three reasons. First, annual spirometry loss among miners may be
457 relatively modest (FEV1 loss 4.3-11 mls/year), highlighting the need for studies with
458 extended follow up(64). Second, smoking and tuberculosis were significant unadjusted
459 confounders(64), and third, the studies included were small and had methodological issues.

460

461 Our models, using defaults informed by good quality observational research, suggest the
462 reported ASM silicosis and TB outcomes are plausible. For example, in our review, an ASM
463 population with a mean cumulative RCS of 8 mg/m³-year is feasible. Using default model
464 values, this results in a silicosis prevalence of 17.4% and an annual TB incidence of 500 per
465 100,000 persons. That TB incidence appears to be lower than reported in our studies
466 suggests either under-estimated model parameters or unaccounted factors, for example
467 smoking. More importantly, our modelling demonstrates that reducing RCS results in
468 reductions in silicosis and tuberculosis, with greater effects at higher mean exposures.
469 Reductions of 80% in silica intensity among ASM and other informal silica-exposed
470 industries are achievable(44,65). Furthermore, the introduction of adequate ventilation was
471 estimated at \$4000 per ASM mine(42). Thus, relatively low-cost reductions leading to lower
472 cumulative exposures are possible and, when viewed in the context of our modelling, may
473 result in meaningful reductions in silicosis and TB. If combined with intermittent TB
474 preventative therapy, which leads to temporary reductions in TB incidence(66), this may
475 lead to sustained and significant reductions in TB incidence.

476

477 A single author performed data extraction which was checked by a second author. Given the
478 relatively straightforward outcomes of this review we believe the method is robust. Full text
479 agreement between PH and BS was fair; this was due to different interpretation regarding
480 inclusion a composite measure of respiratory symptoms which was subsequently resolved.
481 We only found one non-English article, which we were able to translate, suggesting that our
482 search strategy may have a language bias. Whilst our search strategy included specific terms
483 it is possible that, by including 5 outcomes, specificity may have been compromised,
484 however only 1 additional study was found in references. Finally, whilst logistic regression
485 models of RCS and silicosis are valid(23,50,67), some studies use alternative modelling
486 distributions which may have yielded different results(49,68). For example, the Weibull
487 distribution attenuates risk at higher exposures, although existence of this attenuation for
488 silicosis is contested(69). It is possible, however, that lower RCS values (<10 mg/m³) may
489 underestimate silicosis risk compared to a Weibull model, or vice-versa. We are not aware
490 of studies which adjust for silicosis, RCS and HIV in TB, as in our model, however our
491 conceptual understanding would suggest that combining estimates from studies which
492 model silicosis and RCS, and silicosis and HIV respectively is valid; particularly in high
493 exposure settings(62). Finally, as expected, given the scale of the small-scale mining the
494 number of articles is few and, generally, the study quality limits inference. This highlights
495 the obvious need for future representative and higher quality studies.

496

497 **Conclusions**

498

499 Our review found a uniformly high burden of silicosis and tuberculosis among ASM, despite
500 generally short exposures and latent periods. This burden is likely driven by high RCS
501 exposures which, if reduced, would lead to reductions in silicosis prevalence and
502 tuberculosis incidence. Based on our review, we present five recommendations to
503 policymakers and funders attending the 2nd UN High Level Meeting on TB in September
504 2023, that build on declarations made in the 2018 meeting(70). First, RCS control is key and
505 we must enact, fund and enforce RCS exposure limits. Second, routes to improve ASM
506 worker rights including access to compensation should be promoted. Third, we must fund
507 and support national industrial hygiene programs that have specific remits to include ASM
508 and record data. Fourth, these programs should work with National TB programs in ASM
509 communities, particularly to scale up TB preventative therapy and diagnostics. Finally, we
510 must bring up-to-date centuries old research on the relationship between silicosis and TB,
511 particularly at higher intensity exposures, with the aim of better therapeutics and
512 diagnostics. Given the scale of the burden, availability and cost of interventions and benefits
513 of a healthy ASM workforce, there can be fewer more effective areas for interventions.
514

515 **Acknowledgments:** The authors would like to thank individual study authors for their
516 responses to queries regarding individual studies. We would also like to thank Dr Andre
517 Amaral and Professor Sir Anthony Newman-Taylor for their helpful review and comments of
518 the article.

519

520 **Funding:** PH was supported by an MRC Clinical Research Training Fellowship
521 (MR/W024861/1). SM was supported by the EDCTP2 program, European Union (grant
522 number TMA 2016SF-1463-REMODELTZ. The funders had no role in study design, data
523 collection and analysis, decision to publish, or preparation of the manuscript.

524

525

526 References:

527

- 528 1. Leung CC, Yu ITS, Chen W. Silicosis. *The Lancet*. 2012 May;379(9830):2008–18.
- 529 2. Hoy RF, Jeebhay MF, Cavalin C, Chen W, Cohen RA, Fireman E, et al. Current global
530 perspectives on silicosis—Convergence of old and newly emergent hazards. *Respirology*.
531 2022 Jun;27(6):387–98.
- 532 3. World Health Organisation. Global tuberculosis report 2022 [Internet]. Geneva: WHO;
533 Available from: [https://www.who.int/teams/global-tuberculosis-programme/tb-](https://www.who.int/teams/global-tuberculosis-programme/tb-reports/global-tuberculosis-report-2022)
534 [reports/global-tuberculosis-report-2022](https://www.who.int/teams/global-tuberculosis-programme/tb-reports/global-tuberculosis-report-2022)
- 535 4. Konečný P, Ehrlich R, Gulumian M, Jacobs M. Immunity to the Dual Threat of Silica
536 Exposure and Mycobacterium tuberculosis. *Front Immunol*. 2019 Jan 9;9:3069.
- 537 5. Ehrlich R, Akugizibwe P, Siegfried N, Rees D. The association between silica exposure,
538 silicosis and tuberculosis: a systematic review and meta-analysis. *BMC Public Health*.
539 2021 Dec;21(1):953.
- 540 6. Corbett EL, Churchyard GJ, Clayton TC, Williams BG, Mulder D, Hayes RJ, et al. HIV
541 infection and silicosis: the impact of two potent risk factors on the incidence of
542 mycobacterial disease in South African miners: *AIDS*. 2000 Dec;14(17):2759–68.
- 543 7. Hnizdo E, Murray J. Risk of pulmonary tuberculosis relative to silicosis and exposure to
544 silica dust in South African gold miners [published erratum appears in *Occup Environ*
545 *Med* 1999 Mar;56(3):215-6]. *Occup Environ Med*. 1998 Jul 1;55(7):496–502.
- 546 8. OSHA. Occupational Exposure to Respirable Crystalline Silica. Final rule. [Internet].
547 *Federal Register (USA)*; 2016 p. 16285–890. Report No.: 81(58). Available from:
548 [https://www.federalregister.gov/documents/2016/03/25/2016-04800/occupational-](https://www.federalregister.gov/documents/2016/03/25/2016-04800/occupational-exposure-to-respirable-crystalline-silica)
549 [exposure-to-respirable-crystalline-silica](https://www.federalregister.gov/documents/2016/03/25/2016-04800/occupational-exposure-to-respirable-crystalline-silica)
- 550 9. NIOSH hazard review: health effects of occupational exposure to respirable crystalline
551 silica. [Internet]. U.S. Department of Health and Human Services, Public Health Service,
552 Centers for Disease Control and Prevention, National Institute for Occupational Safety
553 and Health; 2002 Apr [cited 2022 Oct 25]. Available from:
554 <https://www.cdc.gov/niosh/docs/2002-129/>
- 555 10. Mannetje A, Steenland K, Attfield M, Boffetta P, Checkoway H, DeKlerk N, et al.
556 Exposure-response analysis and risk assessment for silica and silicosis mortality in a
557 pooled analysis of six cohorts. *Occup Environ Med*. 2002 Nov;59(11):723–8.
- 558 11. James McQuilken, Perks, Rachel. 2020 State of the Artisanal and Small-Scale Mining
559 Sector [Internet]. Washington D.C.: World Bank; 2021 [cited 2022 Dec 21] p. 158.
560 Available from: [https://delvedatabase.org/resources/2020-state-of-the-artisanal-and-](https://delvedatabase.org/resources/2020-state-of-the-artisanal-and-small-scale-mining-sector)
561 [small-scale-mining-sector](https://delvedatabase.org/resources/2020-state-of-the-artisanal-and-small-scale-mining-sector)
- 562 12. Barreto ML, Schein P, Hinton J, Hruschka F. The Impact of Small-Scale Mining Operations
563 on Economies and Livelihoods in Low- to Middle-Income Countries [Internet].

- 564 Department for International Development; 2017 Dec p. 38. Available from:
565 [https://www.gov.uk/research-for-development-outputs/the-impact-of-small-scale-](https://www.gov.uk/research-for-development-outputs/the-impact-of-small-scale-mining-operations-on-economies-and-livelihoods-in-low-to-middle-income-countries)
566 [mining-operations-on-economies-and-livelihoods-in-low-to-middle-income-countries](https://www.gov.uk/research-for-development-outputs/the-impact-of-small-scale-mining-operations-on-economies-and-livelihoods-in-low-to-middle-income-countries)
- 567 13. Cossa H, Scheidegger R, Leuenberger A, Ammann P, Munguambe K, Utzinger J, et al.
568 Health Studies in the Context of Artisanal and Small-Scale Mining: A Scoping Review. *Int*
569 *J Environ Res Public Health*. 2021 Feb 6;18(4):1555.
- 570 14. Hentschel T, Hruschka F, Priester M. Global Report on Artisanal & Small-Scale Mining
571 [Internet]. Institute for Environment and Development; 2002 p. 67. Available from:
572 <https://www.iied.org/sites/default/files/pdfs/migrate/G00723.pdf>
- 573 15. Tsang VWL, Lockhart K, Spiegel SJ, Yassi A. Occupational Health Programs for Artisanal
574 and Small-Scale Gold Mining: A Systematic Review for the WHO Global Plan of Action for
575 Workers' Health. *Ann Glob Health*. 2019 Oct 23;85(1):128.
- 576 16. Finkelstein MM. Silica, silicosis, and lung cancer: a risk assessment. *Am J Ind Med*. 2000
577 Jul;38(1):8–18.
- 578 17. Steenland K. One agent, many diseases: Exposure-response data and comparative risks
579 of different outcomes following silica exposure. *Am J Ind Med*. 2005 Jul;48(1):16–23.
- 580 18. Page MJ, McKenzie JE, Bossuyt PM, Boutron I, Hoffmann TC, Mulrow CD, et al. The
581 PRISMA 2020 statement: an updated guideline for reporting systematic reviews. *BMJ*.
582 2021 Mar 29;n71.
- 583 19. Munn Z, Moola S, Lisy K, Riitano D, Tufanara C. Chapter 5: Systematic reviews of
584 prevalence and incidence. In: *JBI Manual for Evidence Synthesis* [Internet]. JBI; 2020
585 [cited 2023 May 22]. Available from: [https://jbi-global-](https://jbi-global-wiki.refined.site/space/MANUAL/4688607/Chapter+5%3A+Systematic+reviews+of+prevalence+and+incidence)
586 [wiki.refined.site/space/MANUAL/4688607/Chapter+5%3A+Systematic+reviews+of+prev-](https://jbi-global-wiki.refined.site/space/MANUAL/4688607/Chapter+5%3A+Systematic+reviews+of+prevalence+and+incidence)
587 [alence+and+incidence](https://jbi-global-wiki.refined.site/space/MANUAL/4688607/Chapter+5%3A+Systematic+reviews+of+prevalence+and+incidence)
- 588 20. Moskalewicz A, Oremus M. No clear choice between Newcastle–Ottawa Scale and
589 Appraisal Tool for Cross-Sectional Studies to assess methodological quality in cross-
590 sectional studies of health-related quality of life and breast cancer. *J Clin Epidemiol*.
591 2020 Apr;120:94–103.
- 592 21. Schwarzer G, Chemaitelly H, Abu-Raddad LJ, Rücker G. Seriously misleading results using
593 inverse of Freeman-Tukey double arcsine transformation in meta-analysis of single
594 proportions. *Res Synth Methods*. 2019 Sep;10(3):476–83.
- 595 22. Harrer M, Cuijpers P, Furukawa TA, Ebert DD. *Doing Meta-Analysis With R: A Hands-On*
596 *Guide* [Internet]. 1st ed. Boca Raton, FL and London: Chapman & Hall/CRC Press; 2021.
597 Available from: [https://www.routledge.com/Doing-Meta-Analysis-with-R-A-Hands-On-](https://www.routledge.com/Doing-Meta-Analysis-with-R-A-Hands-On-Guide/Harrer-Cuijpers-Furukawa-Ebert/p/book/9780367610074)
598 [Guide/Harrer-Cuijpers-Furukawa-Ebert/p/book/9780367610074](https://www.routledge.com/Doing-Meta-Analysis-with-R-A-Hands-On-Guide/Harrer-Cuijpers-Furukawa-Ebert/p/book/9780367610074)
- 599 23. Miller BG, Hagen S, Love RG, Soutar CA, Cowie HA, Kidd MW, et al. Risks of silicosis in
600 coalworkers exposed to unusual concentrations of respirable quartz. *Occup Environ*
601 *Med*. 1998 Jan 1;55(1):52–8.

- 602 24. Vacek PM, Glenn RE, Rando RJ, Parker JE, Kanne JP, Henry DA, et al. Exposure-response
603 relationships for silicosis and its progression in industrial sand workers. *Scand J Work*
604 *Environ Health*. 2019 May;45(3):280–8.
- 605 25. Wang D, Yang M, Liu Y, Ma J, Shi T, Chen W. Association of Silica Dust Exposure and
606 Cigarette Smoking With Mortality Among Mine and Pottery Workers in China. *JAMA*
607 *Netw Open*. 2020 Apr 14;3(4):e202787.
- 608 26. Zhang M, Zheng YD, Du XY, Lu Y, Li WJ, Qi C, et al. Silicosis in Automobile Foundry
609 Workers: A 29-Year Cohort Study. *Biomed Environ Sci*. 2010 Apr;23(2):121–9.
- 610 27. Hughes JM, Weill H, Checkoway H, Jones RN, Henry MM, Heyer NJ, et al. Radiographic
611 Evidence of Silicosis Risk in the Diatomaceous Earth Industry. *Am J Respir Crit Care Med*.
612 1998 Sep 1;158(3):807–14.
- 613 28. World Health Organisation. Tuberculosis profile: WHO African Region [Internet]. [cited
614 2023 Apr 29]. Available from:
615 https://worldhealthorg.shinyapps.io/tb_profiles/?_inputs_&lan=%22EN%22&entity_type=%22group%22&group_code=%22AFR%22
616
- 617 29. Sonnenberg P, Glynn JR, Fielding K, Murray J, Godfrey-Faussett P, Shearer S. How soon
618 after infection with HIV does the risk of tuberculosis start to increase? A retrospective
619 cohort study in South African gold miners. *J Infect Dis*. 2005 Jan 15;191(2):150–8.
- 620 30. Tse LA, Li ZM, Wong TW, Fu ZM, Yu ITS. High prevalence of accelerated silicosis among
621 gold miners in Jiangxi, China. *Am J Ind Med*. 2007;50(12):876–80.
- 622 31. Souza TP, Watte G, Gusso AM, Souza R, Moreira J da S, Knorst MM. Silicosis prevalence
623 and risk factors in semi-precious stone mining in Brazil. *Am J Ind Med*. 2017
624 Jun;60(6):529–36.
- 625 32. Souza TP, Tongeren M, Monteiro I. Respiratory health and silicosis in artisanal mine
626 workers in southern Brazil. *Am J Ind Med*. 2021 Jun;64(6):511–8.
- 627 33. Moyo D, Zishiri C, Ncube R, Madziva G, Sandy C, Mhene R, et al. Tuberculosis and
628 Silicosis Burden in Artisanal and Small-Scale Gold Miners in a Large Occupational Health
629 Outreach Programme in Zimbabwe. *Int J Environ Res Public Health*. 2021;18(21).
- 630 34. Moyo D, Ncube R, Kavenga F, Chikwava L, Mapuranga T, Chiboyiwa N, et al. The Triple
631 Burden of Tuberculosis, Human Immunodeficiency Virus and Silicosis among Artisanal
632 and Small-Scale Miners in Zimbabwe. *Int J Environ Res Public Health* [Internet].
633 2022;19(21). Available from: <https://www.scopus.com/inward/record.uri?eid=2-s2.0-85141638723&doi=10.3390%2fijerph192113822&partnerID=40&md5=155090835dd2444296ad3c923d294bef>
634
635
- 636 35. Mbuya AW, Mboya IB, Semvua HH, Mamuya SH, Msuya SE. Prevalence and factors
637 associated with tuberculosis among the mining communities in Mererani, Tanzania.
638 Tsimba BM, editor. *PLOS ONE*. 2023 Mar 15;18(3):e0280396.

- 639 36. Rambiki E, Dimba A, Banda P, Ng'ambi W, Banda K, Girma B, et al. The prevalence of
640 pulmonary tuberculosis among miners from the Karonga, Rumphi, Kasungu and
641 Lilongwe Districts of Malawi in 2019. *Malawi Med J J Med Assoc Malawi*.
642 2020;32(4):184–91.
- 643 37. Ohene SA, Bonsu F, Adusi-Poku Y, Dzata F, Bakker M. Case finding of tuberculosis among
644 mining communities in Ghana. *PloS One*. 2021;16(3):e0248718.
- 645 38. Abeid R, Mergenthaler C, Muzuka V, Goodluck A, Nkwabi T, Bigio J, et al. Increasing
646 TB/HIV Case Notification through an Active Case-Finding Approach among Rural and
647 Mining Communities in Northwest Tanzania. *J Trop Med*. 2022;2022:4716151.
- 648 39. Osim EE, Tandayi M, Chinyanga HM, Matarira HT, Mudambo KK, Musabayane CT. Lung
649 function, blood gases, pH and serum electrolytes of small-scale miners exposed to
650 chrome ore dust on the Great Dyke in Zimbabwe. *Trop Med Int Health TM IH*.
651 1999;4(9):621–8.
- 652 40. Bratveit M, Moen BE, Mashalla YJS, Maalim H. Dust exposure during small-scale mining
653 in Tanzania: a pilot study. *Ann Occup Hyg*. 2003;47(3):235–40.
- 654 41. Gottesfeld P, Andrew D, Dalhoff J. Silica Exposures in Artisanal Small-Scale Gold Mining
655 in Tanzania and Implications for Tuberculosis Prevention. *J Occup Environ Hyg*.
656 2015;12(9):647–53.
- 657 42. Mayala LP, Veiga MM, Khorzoughi MB. Assessment of mine ventilation systems and air
658 pollution impacts on artisanal tanzanite miners at Merelani, Tanzania. *J Clean Prod*.
659 2016;116:118–24.
- 660 43. Leon-Kabamba N, Ngatu NR, Kakoma SJB, Nyembo C, Mbelambela EP, Moribe RJ, et al.
661 Respiratory health of dust-exposed Congolese coltan miners. *Int Arch Occup Environ*
662 *Health*. 2018;91(7):859–64.
- 663 44. Gottesfeld P, Tirima S, Anka SM, Fotso A, Nota MM. Reducing Lead and Silica Dust
664 Exposures in Small-Scale Mining in Northern Nigeria. *Ann Work Expo Health*. 2019 Jan
665 7;63(1):1–8.
- 666 45. Ralph O, Gilles N, Fon N, Luma H, Greg N. Impact of artisanal gold mining on human
667 health and the environment in the Batouri Gold District, East Cameroon. *Acad J*
668 *Interdiscip Stud*. 2018;7(1):25–44.
- 669 46. Rajae M, Yee AK, Long RN, Renne EP, Robins TG, Basu N. Pulmonary function and
670 respiratory health of rural farmers and artisanal and small scale gold miners in Ghana.
671 *Environ Res*. 2017;158(ei2, 0147621):522–30.
- 672 47. Kyaw WT, Kuang X, Sakakibara M. Health Impact Assessment of Artisanal and Small-
673 Scale Gold Mining Area in Myanmar, Mandalay Region: Preliminary Research. *Int J*
674 *Environ Res Public Health*. 2020;17(18).

- 675 48. Mannetje A, Steenland K, Checkoway H, Koskela RS, Koponen M, Attfield M, et al.
676 Development of quantitative exposure data for a pooled exposure-response analysis of
677 10 silica cohorts. *Am J Ind Med*. 2002 Aug;42(2):73–86.
- 678 49. Chen W. Exposure to silica and silicosis among tin miners in China: exposure-response
679 analyses and risk assessment. *Occup Environ Med*. 2001 Jan 1;58(1):31–7.
- 680 50. Steenland K, Brown D. Silicosis among gold miners: exposure--response analyses and
681 risk assessment. *Am J Public Health*. 1995 Oct;85(10):1372–7.
- 682 51. Hnizdo E, Sluis-Cremer GK. Risk of silicosis in a cohort of white South African gold
683 miners. *Am J Ind Med*. 1993 Oct;24(4):447–57.
- 684 52. Buchanan D. Quantitative relations between exposure to respirable quartz and risk of
685 silicosis. *Occup Environ Med*. 2003 Mar 1;60(3):159–64.
- 686 53. Hoy RF, Baird T, Hammerschlag G, Hart D, Johnson AR, King P, et al. Artificial stone-
687 associated silicosis: a rapidly emerging occupational lung disease. *Occup Environ Med*.
688 2018 Jan;75(1):3–5.
- 689 54. Akgun M, Araz O, Ucar EY, Karaman A, Alper F, Gorguner M, et al. Silicosis Appears
690 Inevitable Among Former Denim Sandblasters. *Chest*. 2015 Sep;148(3):647–54.
- 691 55. Law I, Floyd K, African TB Prevalence Survey Group. National tuberculosis prevalence
692 surveys in Africa, 2008–2016: an overview of results and lessons learned. *Trop Med Int*
693 *Health TM IH*. 2020 Nov;25(11):1308–27.
- 694 56. Murray J, Sonnenberg P, Shearer SC, Godfrey-Faussett P. Human immunodeficiency
695 virus and the outcome of treatment for new and recurrent pulmonary tuberculosis in
696 African patients. *Am J Respir Crit Care Med*. 1999 Mar;159(3):733–40.
- 697 57. Cowie RL, Langton ME, Becklake MR. Pulmonary tuberculosis in South African gold
698 miners. *Am Rev Respir Dis*. 1989 May;139(5):1086–9.
- 699 58. Churchyard GJ, Kleinschmidt I, Corbett EL, Mulder D, De Cock KM. Mycobacterial disease
700 in South African gold miners in the era of HIV infection. *Int J Tuberc Lung Dis Off J Int*
701 *Union Tuberc Lung Dis*. 1999 Sep;3(9):791–8.
- 702 59. Gwitira I, Karumazondo N, Shekede MD, Sandy C, Siziba N, Chirenda J. Spatial patterns
703 of pulmonary tuberculosis (TB) cases in Zimbabwe from 2015 to 2018. *PloS One*.
704 2021;16(4):e0249523.
- 705 60. Maboso B, Te Water Naude J, Rees D, Goodman H, Ehrlich R. Difficulties in distinguishing
706 silicosis and pulmonary tuberculosis in silica-exposed gold miners: A report of four
707 cases. *Am J Ind Med*. 2023 Apr;66(4):339–48.
- 708 61. Mishra H, Reeve BWP, Palmer Z, Caldwell J, Dolby T, Naidoo CC, et al. Xpert MTB/RIF
709 Ultra and Xpert MTB/RIF for diagnosis of tuberculosis in an HIV-endemic setting with a

- 710 high burden of previous tuberculosis: a two-cohort diagnostic accuracy study. *Lancet*
711 *Respir Med*. 2020 Apr;8(4):368–82.
- 712 62. Hnizdo E, Murray J, Sluis-Cremer GK, Thomas RG. Correlation between radiological and
713 pathological diagnosis of silicosis: An autopsy population based study. *Am J Ind Med*.
714 1993 Oct;24(4):427–45.
- 715 63. Frascella B, Richards AS, Sossen B, Emery JC, Odone A, Law I, et al. Subclinical
716 Tuberculosis Disease-A Review and Analysis of Prevalence Surveys to Inform Definitions,
717 Burden, Associations, and Screening Methodology. *Clin Infect Dis Off Publ Infect Dis Soc*
718 *Am*. 2021 Aug 2;73(3):e830–41.
- 719 64. Hnizdo E. Chronic obstructive pulmonary disease due to occupational exposure to silica
720 dust: a review of epidemiological and pathological evidence. *Occup Environ Med*. 2003
721 Apr 1;60(4):237–43.
- 722 65. Gottesfeld P, Nicas M, Kephart JW, Balakrishnan K, Rinehart R. Reduction of Respirable
723 Silica Following the Introduction of Water Spray Applications in Indian Stone Crusher
724 Mills. *Int J Occup Environ Health*. 2008 Apr;14(2):94–103.
- 725 66. Churchyard GJ, Fielding KL, Lewis JJ, Coetsee L, Corbett EL, Godfrey-Faussett P, et al. A
726 trial of mass isoniazid preventive therapy for tuberculosis control. *N Engl J Med*. 2014
727 Jan 23;370(4):301–10.
- 728 67. Rosenman KD, Reilly MJ, Rice C, Hertzberg V, Tseng CY, Anderson HA. Silicosis among
729 Foundry Workers: Implication for the Need to Revise the OSHA Standard. *Am J*
730 *Epidemiol*. 1996 Nov 1;144(9):890–900.
- 731 68. Chen W, Hnizdo E, Chen JQ, Attfield MD, Gao P, Hearl F, et al. Risk of silicosis in cohorts
732 of Chinese tin and tungsten miners, and pottery workers (I): An epidemiological study.
733 *Am J Ind Med*. 2005 Jul;48(1):1–9.
- 734 69. Stayner L, Steenland K, Dosemeci M, Hertz-Picciotto I. Attenuation of exposure-response
735 curves in occupational cohort studies at high exposure levels. *Scand J Work Environ*
736 *Health*. 2003 Aug;29(4):317–24.
- 737 70. UN General Assembly. Political declaration of the high-level meeting of the General
738 Assembly on the fight against tuberculosis [Internet]. United Nations (UN); 2018.
739 Available from: [https://www.who.int/news-room/events/un-general-assembly-high-](https://www.who.int/news-room/events/un-general-assembly-high-level-meeting-on-ending-tb)
740 [level-meeting-on-ending-tb](https://www.who.int/news-room/events/un-general-assembly-high-level-meeting-on-ending-tb)

741

742

743 **Supporting information**

744

745 **S1 File. Search Strategy**

746 **S2 File. PRISMA Systematic review and abstract checklist**

747 **S3 File. Data extraction and quality assessment template**

748 **S4 Figure 2. Line graph of estimated probability of silicosis in increasing categories of 0.5**
749 **mg/m³-years at varying associations of cumulative RCS exposure and silicosis.** Incidence is
750 based on values of RCS increasing from 0 to 20 mg/m³-years in increments of 0.1 mg/m³-
751 years in which the odds of silicosis for an increase in 1 mg/m³-years RCS exposure are varied
752 between 1.1 and 2. Note: The true nature of the exposure-outcome relationship will not
753 only depend on the cumulative exposure but also the latency and, potentially, the intensity
754 of exposure. For ease of interpretation, we fitted local polynomial regression lines to all
755 simulated values.

756 **S5 Figure 3. Smoothed density histograms of simulated cumulative RCS exposures of**
757 **increasing mean values.** Distributions are calculated by taking the square root of the
758 expected mean, drawing a normal distribution with a fixed standard deviation of 0.5 mg/m³-
759 years and performing a quadratic transformation (i.e. squared)

760 **S6 File. Detailed description of modelling parameters**

761 **S7 Table 1. Characteristics of studies reporting spirometry (n=3) estimates among ASM**

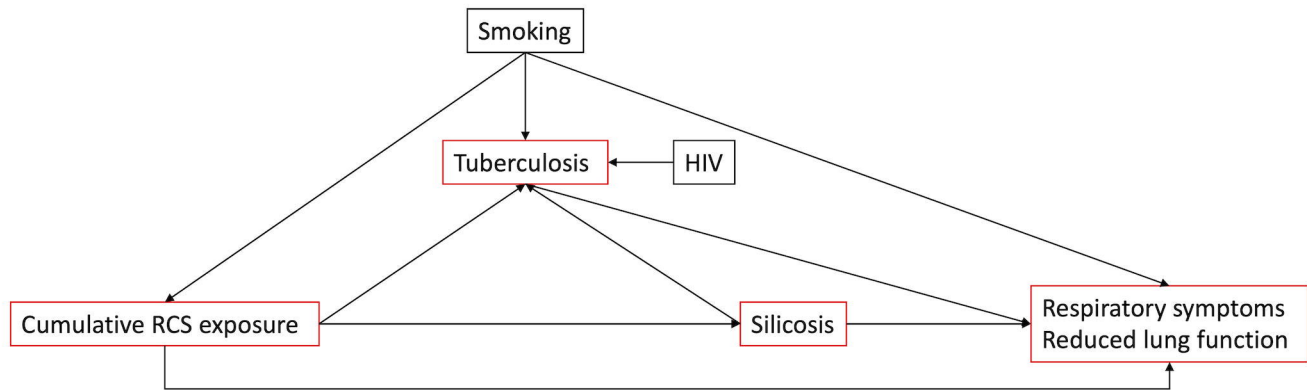
762 **S8 Table 2. Characteristics of studies reporting respiratory symptoms (n=3) and smoking**

763 **(n=8) or substance misuse (n=2) estimates among ASM**

764 **S9 Figure 1. Funnel plot of A. Silicosis, B. Microbiological tuberculosis and C. Clinical**
765 **tuberculosis studies, to aid assessment of possible publication bias**

766 **S10 Table 3. Estimates of silicosis prevalence (Table 3A) and tuberculosis incidence (Table**
767 **3B) at cumulative RCS distributions with a mean of 4, 8, 12 and 16 mg/m³-years based on**
768 **simulation with a sample size of 10,000.** Variables in the model are held constant, unless
769 otherwise stated, at values of: a baseline silicosis prevalence of 2%, an increased odds of 1.3
770 of silicosis per 1 mg/m³-year increase in RCS exposure, a baseline TB incidence of 200 cases
771 per 100,000 per year, an increased odds of 1.05 of TB per 1 mg/m³-year increase in RCS
772 exposure, an increased odds of TB of 4x in those with silicosis, a randomly distributed
773 baseline prevalence of HIV of 2% and an increased odds of TB of 2x in those with HIV.

774



Identification

Studies from databases/registers (n = 596)

References from other sources (n = 1)
Citation searching (n = 1)

Duplicates removed (n = 240)

Screening

Studies screened (n = 357)

Studies excluded (n = 299)

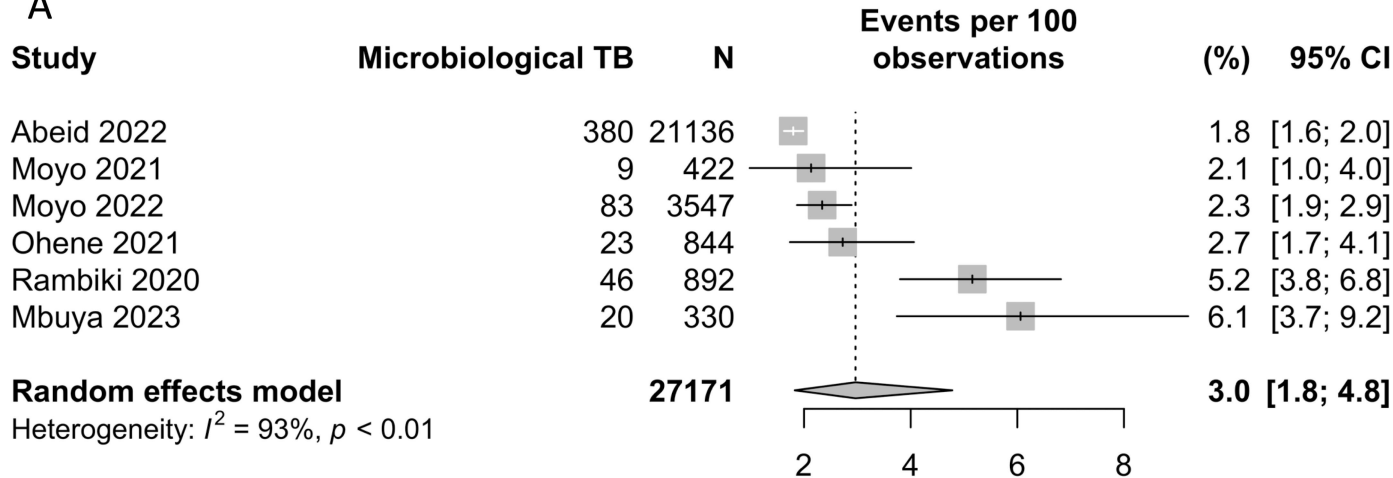
Studies assessed for eligibility (n = 58)

Studies excluded (n = 40)
Conference abstract (n = 8)
Unable to access paper (n = 3)
No respiratory outcome or silica measurement (n = 9)
Qualitative/systematic review/case report (n = 12)
Significant proportion of small scale miners not included (n = 8)

Included

Studies included in review (n = 18)
Silicosis (n = 6)
Tuberculosis (n = 6)
Silica/dust exposure (n = 8)
Spirometry (n = 3)
Symptoms (n = 4)

A



B

