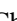



1 **Title: Transient increased risk of influenza infection following RSV infection in South Africa;**
2 **findings from the PHIRST study, South Africa, 2016-2018.**

3

4 **Authors:** Naomi R Waterlow¹, Jackie Kleynhans^{2,3}, Nicole Wolter^{2,4}, Stefano Tempia^{2,3}, Rosalind M
5 Eggo¹, Orienka Hellferscee^{2,4}, Limakatso Lebina^{5,6}, Neil Martinson^{5,7}, Ryan G Wagner^{2,8}, Jocelyn Moyes²,
6 Anne von Gottberg^{2,4}, Cheryl Cohen^{2,3} , Stefan Flasche¹ 

7

8 ¹ Centre for Mathematical Modelling of Infectious Disease, London School of Hygiene and Tropical
9 Medicine, London, UK

10 ² Centre for Respiratory Diseases and Meningitis, National Institute for Communicable Diseases,
11 Johannesburg, South Africa

12 ³ School of Public Health, Faculty of Health Sciences, University of the Witwatersrand, Johannesburg,
13 South Africa

14 ⁴ School of Pathology, Faculty of Medicine, University of the Witwatersand, Johannesburg, South Africa

15 ⁵ Perinatal HIV Research Unit, University of the Witwatersrand, Johannesburg, South Africa

16 ⁶ Africa Health Research Institute, Durban, South Africa

17 ⁷John Hopkins University Center for TB Research, Baltimore MD

18 ⁸ South African Medical Research Council/Rural Public Health and Health Transitions Research Unit
19 (Agincourt), School of Public Health, Faculty of Health Sciences, University of the Witwatersrand,
20 Johannesburg, South Africa

21

22  These authors contributed equally

23

24

25

26

27

28 **Research in Context**

29

30 *Evidence before this study*

31

32 We searched PubMed titles and abstracts for the terms “influenza”, “RSV” or “Respiratory
33 syncytial virus” and “interaction”, “competition” or “enhancement” resulting in 56 articles,
34 excluding reviews. Evidence for the potential interaction of influenza and RSV originates
35 from analyses of viral surveillance and experimental non-human studies, or isolated
36 mathematical models. Most such studies suggest potential competitive exclusion of RSV
37 and Influenza but are prone to potential confounding and unable to test the links between
38 biological mechanisms and population level impacts.

39

40 *Added value of this study*

41

42 This longitudinal study with frequent testing of participants for colonisation with RSV and
43 Influenza allows sufficient resolution to analyse direct evidence for interaction of both viruses
44 on colonisation. In contrast to evidence insofar we find that the effect of RSV colonisation on
45 the risk for influenza acquisition is short lived and synergistic, but unlikely to substantially
46 effect influenza epidemiology on population level.

47

48 *Implications of all the available evidence*

49

50 RSV infections are likely to have limited impact on influenza circulation.

51

52

53

54

55

56 **Abstract:**

57

58 Large-scale prevention of respiratory syncytial virus (RSV) infection may have ecological
59 consequences for co-circulating pathogens, including influenza. We assessed if and for how
60 long RSV infection alters the risk for subsequent influenza infection.

61

62 We analysed a prospective longitudinal cohort study conducted in South Africa between
63 2016 and 2018. For participating households, nasopharyngeal samples were taken twice
64 weekly, irrespective of symptoms, across three respiratory virus seasons, and real-time
65 polymerase chain reaction (PCR) was used to identify infection with RSV and/or influenza.

66 We fitted an individual-level hidden markov transmission model in order to estimate RSV and
67 influenza infection rates and their interdependence.

68

69 Of a total of 122113 samples collected, 1265 (1.0%) were positive for influenza and 1002
70 (0.8%) positive for RSV, with 15 (0.01%) samples from 12 individuals positive for both
71 influenza and RSV. We observed 2.25-fold higher incidence of co-infection than expected if
72 assuming infections were unrelated. We estimated that infection with influenza is 2.13 (95%
73 CI 0.97 - 4.69) times more likely when already infected with, and for a week following, RSV
74 infection, adjusted for age. This equates to 1.4% of influenza infections that may be
75 attributable to RSV in this population. Due to the local seasonality (RSV season precedes
76 the influenza season), we were unable to estimate changes in RSV infection risk following
77 influenza infection.

78

79 RSV infection was associated with an increased risk for influenza infection for a short period
80 after infection. However, the impact on population-level transmission dynamics of this
81 individual-level synergistic effect was not measurable in this setting.

82

83

84 **Background**

85

86 Globally, in 2019 there were an estimated 17.2 billion upper respiratory tract infections (1),
87 which is a common presentation of the over 200 known respiratory virus strains that cause
88 illness in humans(1). These viruses may interact, resulting in cross-protective or enhancing
89 effects for transmission and/or disease severity(2–5), and can result in unintended knock-on
90 effects from public health interventions. However, other factors, including a change in
91 behaviour relevant to transmission, may also underlie apparent pathogen interaction. An
92 example of ecological knock-on effects that were not caused by pathogen interaction but by
93 a change in social behaviour has been observed as a result of social distancing to mitigate
94 the Coronavirus Disease 2019 (COVID-19) pandemic(6). Vaccination may increase the
95 burden of an untargeted virus if an infection with the targeted pathogen is cross-protective,
96 or reduce the prevalence of enhancing pathogens. Understanding these potential ecological
97 knock-on effects is particularly important for pathogens where vaccines are in late-stage
98 clinical development, such as for respiratory syncytial virus (RSV) where successful Phase
99 III trials have recently been reported for multiple vaccines(7,8).

100

101 While RSV may be a critical factor underlying a substantial part of severe pneumococcal
102 infections(9), some evidence has suggested a competition for a similar ecological niche with
103 influenza viruses(5). However, much of the available evidence is based on *in vitro*
104 experiments or population-level ecological studies that identify the correlation of respective
105 case series; e.g. following the 2009 influenza pandemic, many studies showed a delayed or
106 absent RSV epidemic(10–14), however, this was not uniformly the case(15). Surveillance in
107 non-pandemic years has shown that the epidemic incidence peaks of influenza and RSV
108 rarely coincide in geographies where influenza and RSV circulate at the same time of year
109 (16,17). Immunological evidence from studies such as cell culture and mouse models
110 suggest potential inhibition of heterologous growth(18–21), but the extent that such
111 interactions impact transmission among humans is unclear.

112

113 A key issue faced by many epidemiological studies of RSV and influenza interaction is that
114 they rely on syndromic surveillance of medically attended illness for their inference, even
115 though asymptomatic infections and non-medically attended illness are likely important
116 drivers of transmission and interaction. We analyse a unique longitudinal household study
117 with frequent asymptomatic sampling to help better understand the interdependence of RSV
118 and influenza infection.

119

120

121 **Methods**

122

123 *Study population and data collection*

124

125 Influenza and RSV infections were identified as part of the Prospective Household cohort
126 study of influenza, respiratory syncytial virus and other respiratory pathogens community
127 burden and Transmission dynamics in South Africa (PHIRST) described in detail elsewhere
128 (22). The study was conducted between 2016 and 2018 in both a rural and an urban
129 community in South Africa. Households of more than two individuals were enrolled if 80% or
130 more individuals from the household provided consent. The study was conducted over three
131 respiratory virus seasons, with new households enrolled each year for a follow-up period of
132 ten months, except in the 2016 season, where only 6 months of follow-up occurred, starting
133 in the middle of the RSV season (Figure 1). Nasopharyngeal swabs were collected twice per
134 week, irrespective of symptoms, and samples were subsequently analysed by real-time
135 polymerase chain reaction (PCR) for the presence of RSV and influenza viruses.

136

137 We defined an 'episode' as one or more positive samples that do not have more than 14
138 days of negative samples between them (23,24). We define 'dual infection' as being infected
139 with both viruses at the same time (i.e. the same sample is positive for both RSV and

140 influenza). We defined ‘overlapping episodes’ as when an RSV episode coincided at some
141 point in time with an influenza episode.

142

143 *Crude Analyses*

144

145 For the crude analysis, we included only the first positive sample for each episode, so as not
146 to double-count infections. For each individual with an RSV infection (i.e. episode) in the
147 dataset, we identified all controls who were tested but uninfected on the same day and were
148 in the same age group (defined as ages <5, 5 to 18, 19-65 and >65 years). We then
149 calculated the number of individuals among cases (exposed) and controls (unexposed) that
150 had a positive sample for influenza infection (outcome variable) on the day of the first
151 positive RSV sample or up to 21 days before or after. This range was used as we consider it
152 a biologically plausible range for interaction. We repeated this process in reverse, identifying
153 RSV-positive samples on the same and nearby days as an influenza episode started. Risk
154 ratios and the respective confidence intervals were then calculated across weekly
155 aggregated counts (see supplement).

156

157 Secondly, we compared the observed frequency of samples indicating RSV and influenza
158 co-infection versus the expected frequency of co-infection if assuming that the risk of RSV
159 and influenza infection were uncorrelated. The expected proportion of co-infections on a
160 given day is calculated by multiplying the prevalence of RSV and influenza infections on that
161 day. The expected proportion of co-infections overall is then the sum of expected co-
162 infection frequency on the sampling days (proportion times the number of samples) divided
163 by the total number of samples taken during the study. We compared the expected
164 proportion of co-infected samples against the observed proportion of co-infected samples
165 using a two-proportion z-test. All analysis was conducted in R.

166

167 *Model*

168

169 We used a multi-state Markov modelling framework to model the transition between RSV,
170 influenza and co-infection states (25). Each individual is classed as either Susceptible (S),
171 Infectious (I), Period of interaction following infectiousness (P) or Recovered (R) (Figure 2).
172 We fit parameters for the time-dependent Force of Infection (FOI) of both viruses and the
173 strength of interaction for each virus. The time dependence of the FOI aims to account for
174 the timing of the relative RSV and influenza seasons, assuming this may be related to some
175 unmeasured factors. Interaction can occur during, and for one week after infection, as this
176 was the scale of time indicated in previous studies (26). We also ran sensitivity analyses with
177 2, 3 and 4 weeks, respectively. The interaction can be competitive (<1 indicating that
178 infection with one partially mitigates acquisition of the other) or synergistic (>1 indicating that
179 infection with one enhances the probability of acquisition with the other pathogen), and we
180 test the null hypothesis of there being no interaction. Other parameters were informed from
181 literature estimates (Table 1). The FOI is time-dependent, independently estimated every 30-
182 day time window, and age group is included as a covariate (<5 years, 5 -18 years, 19-65
183 years, 65 years or older). Further details are given in the supplement.

184

185 We assumed that all individuals were susceptible to both RSV and influenza infection at
186 recruitment ($S_{RSV}S_{INF}$ class in the model), and that each individual could only be infected by
187 each virus once during a season. If a further infection occurred, data on the individual was
188 removed from the time point of the re-infection. We assumed that positive tests of the same
189 virus occurring within a 14-day time window were related to the same infection(27).

190

191 The observation of a current RSV or influenza infection in the study did not allow us to
192 distinguish the period of post-infection interaction from the subsequent state of immunity
193 without interaction, so in the model, these were included as “censored” states. This means
194 the model estimates which of these states each individual is in at a given time.

195

196 In addition, we assumed that all RSV and influenza positive tests were true positives, while
197 we estimated the proportion of false negative tests in the model framework. We did this by
198 allowing misclassification of states for negative samples.

199

200 The model was implemented and fit using the R *msm* package(25), with the quasi-Newton
201 method “*BFGS*”, which builds up a picture of the surface to be optimised using function
202 values and gradients. We ran the model twice, with different initial values each time.

203

204 *Sensitivity Analysis*

205 We tested the sensitivity of our results to alternative assumptions of the duration of
206 interaction, rerunning the model where interaction can occur during infection and for the
207 following 2 weeks, the following 3 weeks and the following 4 weeks. We also attempted to
208 run the model with shorter time intervals for the FOI, as well as excluding the first season
209 (2016) where most of the co-infections occurred, however neither of these models reached
210 convergence.

211 All analysis was conducted in R. Code and summarised data are available here

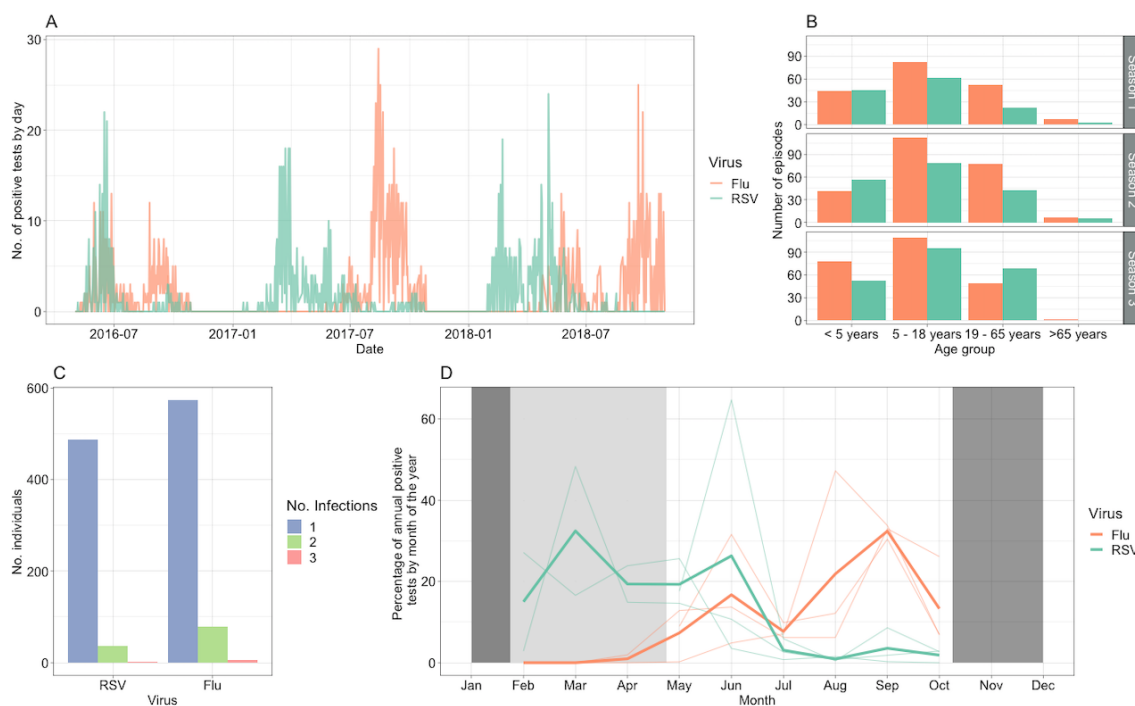
212 https://github.com/NaomiWaterlow/markov_model.

213 **Results**

214 Out of a total number of 122113 individual-days swab collection was set to occur (across
215 1684 individuals), 13% of results were missing from the analysis, either due to unavailability
216 of the individuals or processing errors (such as incorrect labelling or leakage). In total, there
217 were 1265 positive influenza samples and 1002 positive RSV samples, with a median of 71
218 samples taken per individual (95% quantiles 25-81) over the study period. These clustered
219 into 574 and 488 episodes of infection with influenza or RSV, of which 14% (83/574) and 8%
220 (40/488), respectively, were episodes of reinfection of an individual with the same pathogen
221 within a season (Figure 1 A&C). There were 15 dual infection samples across 12 episodes of

222 infection, in 12 individuals: two in children <5 years old, nine in children 5-18 years old and
223 one in an adult 19-65 years old. There were 18 samples that were classified as overlapping,
224 corresponding to the same 12 infections and individuals as the dual infections, with no
225 further overlapping episodes that were not detected as a dual infection.

226 The RSV epidemics occurred from February to June, with peak incidence around March,
227 whilst the influenza epidemic occurred later in the year between May and October, typically
228 peaking in September (Figure 1D). The mean duration of episodes (from first to last positive
229 samples) was 6.8 days for RSV (95% CI 6.1 - 7.4 days) and 6.5 days for influenza (95% CI
230 6.0 - 7.0 days). The infection attack rate for each season was 34% (216/512), 41%
231 (216/577) and 42% (216/565) for influenza and 24% (131/542), 32% (184/577) and 38%
232 (216/565) for RSV, although data collection over the first season was for a shorter period,
233 missing much of the RSV season. The median age of infected individuals for influenza and
234 RSV in the first season was 10 and 7 years, respectively (ranges 0-79 and 0-70), compared
235 to 15 and 19 years in the second season (ranges 0-91 and 0-91) and 8 and 11 years in the
236 third season (ranges 0-70 and 0-91) (Figure 1B).

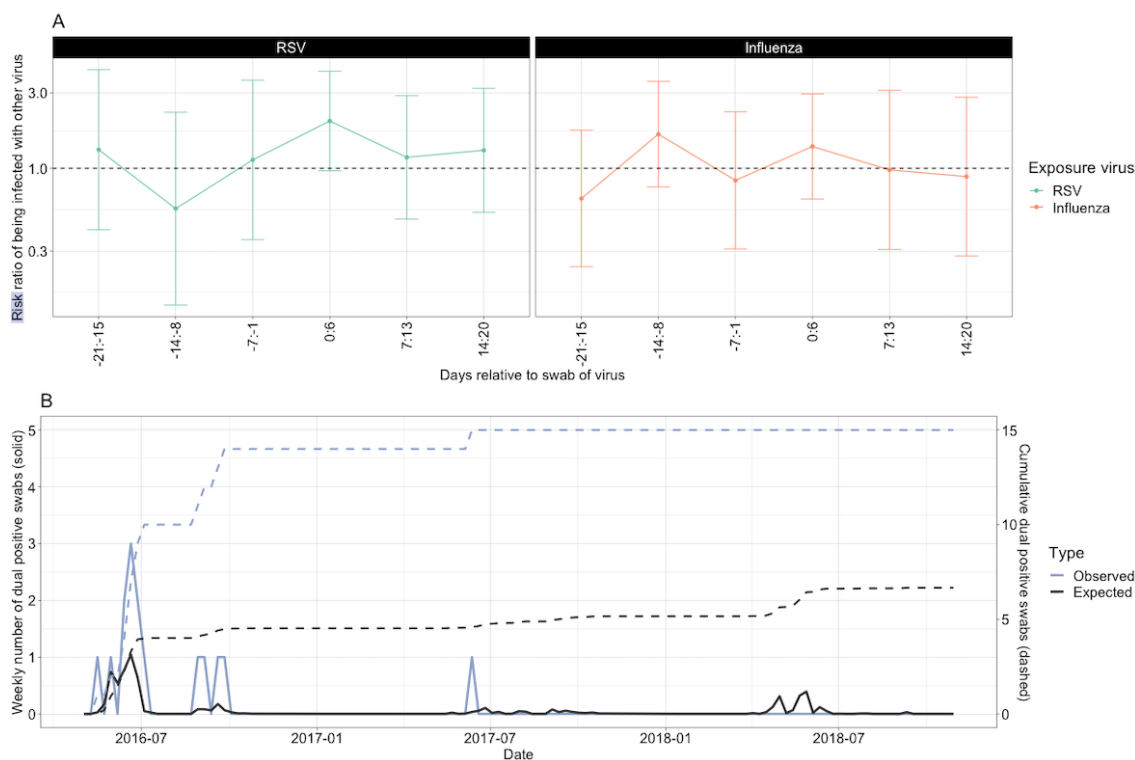


238 *Figure 1: A) All positive test results over time for influenza (Flu) and Respiratory Syncytial*
239 *Virus (RSV). B) Number of infection episodes in each age group, across the three seasons*
240 *C) Number of individuals against the number of infections for each virus, where positive tests*
241 *within 14 days are assumed to be due to the same infection. D) Seasonality of influenza and*
242 *RSV infections, depicting the percentage of annual positive tests by month of the year. The*
243 *semi-transparent lines depict the individual seasons. The solid lines depict the mean across*
244 *seasons. Dark shaded areas depict months where no samples were taken, and the light*
245 *shaded area shows samples not taken in the 2016 season.*

246 In the crude analysis, a small increase in the risk ratio for influenza infection was observed
247 the week following a positive RSV sample (1.99, 95%CI 0.96 - 4.11) (Figure 2A), although
248 confidence intervals crossed one. Whilst there was also an increased risk ratio for RSV
249 infection in the week following influenza infection, this was of a smaller magnitude and had
250 lower confidence (1.37 95%CI 0.64 - 2.95).

251 Assuming independence of RSV and influenza infection, we would expect 6.67 co-infected
252 samples to occur during the study period, compared to 15 that were observed; a 2.25 times
253 higher rate of co-infections albeit not statistically significant (95%CI 0.73 - 3.77, p-value
254 0.12). All but one of the actual co-infections occurred in the first season (Figure 2B).

255



256

257 *Figure 2: A) Analysis 1. Risk ratio of the risk of being infected by the second virus (outcome),*
 258 *when exposed to the primary virus. Points indicated the estimate and error bars the 95%*
 259 *confidence interval. The dashed line indicates a risk ratio of 0, equating to no effect. B)*
 260 *Analysis 2. Expected versus observed dual infections per week.*

261 As the RSV season preceded the influenza season, only 15 /1684 (0.9%) study participants
 262 were infected with influenza and a subsequent RSV infection in the same season. Thus, in
 263 the Markov model, the estimated strength of interaction exerted by infection of influenza on
 264 RSV infection probability had wide confidence intervals, which crossed 1 (the Null
 265 hypothesis indicating no effect): RSV infection was 0.93 (95% CI: 0.2 - 4.3) times as likely in
 266 the presence of influenza infection compared to without influenza infection.

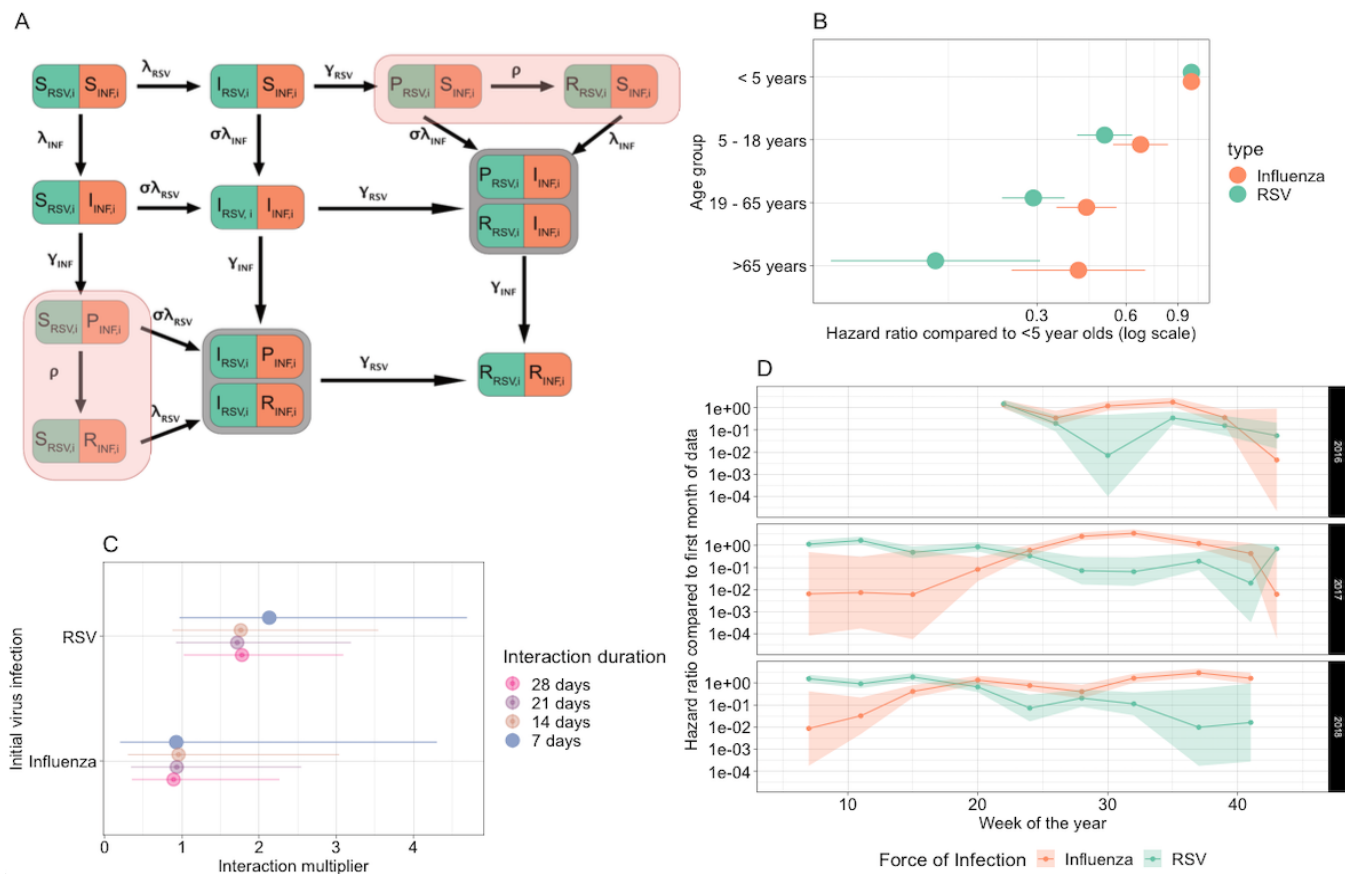
267 Conversely, 158/1684 (9.4%) individuals were infected with RSV and, subsequently,
 268 influenza. We estimated a synergistic interaction effect of RSV infection on the risk for
 269 influenza infection: infection with influenza was 2.13 (95% CI: 0.97 - 4.69) times more likely
 270 for one week following the first positive sample of an RSV infection episode. This translates
 271 to a very small population-level effect: of the 574 observed influenza episodes, only 12 were
 272 overlapping infections. If we add to these the infections that occurred within 7 days of testing

273 negative after an infection episode with the other virus, we get a total of 18 extended overlap
274 episodes. Eight of these 18 overlapping episodes would have been avoided without the
275 synergistic effect, resulting in a reduction in total influenza cases in this cohort of 1.4%.

276 The model further estimated that the sensitivity of testing for influenza and RSV was very
277 high, with a false negative rate of 0.75% (95% CI: 0.72 - 0.77). For RSV, those <5 years had
278 the highest risk of being infected, followed by individuals aged 5-18 years (hazard ratio 0.51
279 (95% CI: 0.41- 0.63)), 19-65 years (hazard ratio 0.29 (95% CI: 0.23- 0.37)) and 65 years and
280 older (hazard ratio 0.13 (95% CI: 0.06- 0.30)) (Figure 3B). A similar but smaller reduction in
281 infection risk with increasing age was observed for influenza (Figure 4).

282 Our results on the strength of the synergistic effect of RSV infection on the risk for influenza
283 infection were robust to alternative assumptions on the duration of said effect. We estimated
284 that influenza infection is 1.76 (95%CI 0.88 - 3.54) times, 1.72 (95%CI 0.92 - 3.19) times and
285 1.78 (1.02 - 3.09) times more likely following an RSV infection if we assumed that the
286 interaction lasted for 2, 3 or 4 weeks respectively (See supplement).

287 Our sensitivity analyses with a shorter time interval for the changing FOI, and for the default
288 model but excluding the first season of data did not converge.



289

290 *Figure 3: A) Model diagram. Shaded red compartments are censored states. B) Age group hazard ratios of infection by age on a log scale,*
 291 *compared to the <5 years as the base age group. C) Interaction multiplier for each virus, for the main analysis (7 days interaction), and the*
 292 *duration sensitivity analysis. An interaction multiplier of x indicates that Transmission from S to I with the other virus is x times more likely when*
 293 *already infected with the initial virus. D) Force infection over time for influenza and RSV (7-day interaction model). Lines indicate the mean*
 294 *value, and the shaded ribbons the 95% CI.*

295 **Discussion**

296 We found over twice as many co-infections than expected, if assuming no interaction, and
297 similarly estimate in the model that influenza infection risk is 2.13 (95% CI: 0.97 - 4.69)
298 higher during or shortly after RSV infection. This, however, translates to a very small
299 population-level impact. Whilst we did not find evidence to suggest elevated RSV infection
300 risk following influenza infection, this may have been due to the small sample size of RSV
301 infections subsequent to influenza. Since the observed synergy in infection risk was
302 estimated to be short-lived, ecological consequences on influenza infection risk following
303 widespread RSV prevention are unlikely; however, they may be amplified by increases in
304 severity as a result of co-infection(2), which we did not address in this paper.

305 The major strength of this analysis is that the data consist of regular symptom-agnostic
306 swabbing of study participants, allowing the inclusion of mild and asymptomatic infections
307 (which can be a large proportion), rather than just symptomatic and severe cases. This high-
308 quality data results in major benefits. Firstly, changes in infection risk may be obscured by
309 the impacts of dual infection on clinical severity when using syndromic surveillance data,
310 resulting in higher reporting. This has been avoided in our study. The current literature gives
311 mixed results on the increased severity of dual infections, with some studies estimating an
312 increased severity of dual infections (26,28), and others not finding evidence of a significant
313 effect (29,30). The impact of RSV and influenza co-infection on the severity of infection was
314 outside the scope of this study.

315 A second benefit of symptom-agnostic swabbing is that no bias is introduced as a result of
316 the inherent difference between those with symptoms and those without. For instance, it
317 could be that those with more severe symptoms may have weaker immune systems than
318 those with milder symptoms, and therefore may also be more susceptible to infection with
319 both viruses. Including all infections in the analysis removes this potential bias.

320 Thirdly, by fitting models to infections rather than clinical cases, we reduce the number of
321 parameters required to be fitted, as we do not need to include reporting rate parameters.
322 Fitting complex interaction models is difficult, and it is not possible to differentiate extreme
323 interaction parameter values from less extreme ones(31).

324 A further strength of the data used in this model is its longitudinal nature. We used data
325 across almost 3 seasons, where the same individuals were sampled within (but not across)
326 each season, giving us detailed infection data. There may, however, be bias introduced due
327 to missing data, with 13% of swabs missing. Whilst the majority of these are likely due to
328 unbiased reasons (such as travel and holidays), other potential reasons, such as severe
329 infections resulting in hospitalisations, may have resulted in bias. However, due to the
330 regularity of the swabbing, any bias introduced due to these reasons would have been
331 minimal, as infection would likely have been identified on a neighbouring swab date (as the
332 median recorded episode duration was 6 and 5.5 days for RSV and influenza, respectively)
333 and very few hospitalisations were found in the cohorts overall. In addition, the hidden
334 Markov model inference takes into account missing data.

335 Our model results differ from some previous evidence of interaction between RSV and
336 influenza. However, these earlier findings are not based on mechanistic models and could
337 therefore be confounded by other transmission-relevant factors, such as contact rates. This
338 is likely the case with studies investigating causality for the shifts in RSV patterns following
339 the 2009 influenza pandemic (10,12–14), where, despite no governmentally imposed social
340 restrictions, fear of the virus could have altered contact behaviours (32). In our previous work
341 on evidence for interaction between the two viruses in Nha Trang, Vietnam, we showed that
342 the data was compatible with either a ~41% reduction in susceptibility for 10 days following
343 infection with the other virus, or no reduction in susceptibility following infection(26). This is
344 not incompatible with our current estimate of a small increase in susceptibility on the
345 individual level, which would likely not have an impact on the population scale. Our previous
346 model used population-level symptomatic surveillance data, and we did not account for the

347 possibility of cross-protective interaction, as opposed to this study, where the individual-level
348 data allowed us to explore a broader parameter space.

349 Age-related susceptibility to infection reduction is generally considered to be the case for
350 RSV, whether this be due to age directly, or due to subsequent infections. For instance,
351 Henderson et al. showed that attack rates during an epidemic were 98% for the 1st infection,
352 75% for a second infection and 65% for a third infection (33). As increasing numbers of
353 previous infections will strongly correlate with age, this is not out of line with our estimates of
354 age-related hazard rates.

355 Whilst the evidence we provide shows an increased likelihood of influenza infection following
356 RSV, this is of very small magnitude, most likely resulting in little measurable impact from
357 co-infection at the population level. Of relevance to the implementation of public health
358 policies, a reduction in RSV circulation, for example, due to vaccination, is therefore unlikely
359 to result in substantial replacement with influenza. This provides evidence against a potential
360 concern for the implementation of an RSV vaccine.

361 Our model was limited by the need to reduce complexity, and we, therefore, did not allow for
362 waning of immunity, and hence we were unable to include repeat infection of the same virus
363 within a season, or any serological data. Repeat infections of influenza and RSV are likely
364 due to different subtypes. However, as our estimate of interaction is very short-lived, not
365 including these repeat infections are unlikely to have affected our estimates. We were
366 additionally limited by the lack of RSV cases following influenza infections, meaning we had
367 very large confidence on the estimates of the effect of influenza on RSV. We also took a
368 simplistic approach of homogenous population mixing. An alternative explanation of the
369 elevated rate of co-infections is that behavioural aspects may have influenced both the
370 probability of getting RSV and influenza. This could be, for instance, attendance at a
371 crowded event (e.g. religious ceremony) resulting in an increased chance of infection with
372 both viruses. Alternatively, it may just be individuals with higher contacts due to factors such

373 as their employment type. Ideally, we would be able to quantify times of exposure to the
374 viruses, for example, through infections in the household, however, we did not have
375 sufficient data to analyse this in the current study. We also did not look at climatic factors
376 specifically, instead assuming they were captured by our time-varying FOI. This time-varying
377 FOI also allowed us to account for the fact that the influenza season follows the RSV
378 season. We also note that all but one overlapping episode for RSV and influenza were
379 collected during the first season. This is likely due to differing subtypes or age factors, which
380 we were not able to include in our crude analysis of expected dual infections. We attempted
381 to run a sensitivity analysis excluding the first season of data where the majority of co-
382 infections were detected, however this model did not converge, likely due to small numbers.

383 Overall, the use of a mathematical model combined with a highly detailed longitudinal
384 population-based infection study allowed us to estimate the interaction of RSV and influenza
385 in South Africa. Our findings suggest that concerns for increased influenza circulation as a
386 result of the introduction of RSV prevention strategies may not materialise.

387

388 **References**

- 389 1. Jin X, Ren J, Li R, Gao Y, Zhang H, Li J, et al. Global burden of upper respiratory
390 infections in 204 countries and territories, from 1990 to 2019. *eClinicalMedicine*
391 [Internet]. 2021 Jul 1 [cited 2022 May 4];37. Available from:
392 [https://www.thelancet.com/journals/eclinm/article/PIIS2589-5370\(21\)00266-2/fulltext](https://www.thelancet.com/journals/eclinm/article/PIIS2589-5370(21)00266-2/fulltext)
- 393 2. Waterlow NR, Toizumi M, Leeuwen E van, Nguyen HAT, Myint-Yoshida L, Eggo RM, et
394 al. Evidence for influenza and RSV interaction from 10 years of enhanced surveillance in
395 Nha Trang, Vietnam, a modelling study. *PLOS Comput Biol*. 2022 Jun
396 24;18(6):e1010234.
- 397 3. Velasco-Hernández JX, Núñez-López M, Comas-García A, Cherpitel DEN, Ocampo MC.
398 Superinfection between Influenza and RSV alternating patterns in San Luis Potosí State,
399 México. *PLoS ONE* [Internet]. 2015;10(3). Available from:
400 <http://europepmc.org/backend/ptpmcrender.fcgi?accid=PMC4372574&blobtype=pdf>
- 401 4. Bosch AATM, Biesbroek G, Trzcinski K, Sanders EAM, Bogaert D. Viral and Bacterial
402 Interactions in the Upper Respiratory Tract. Available from:
403 [http://journals.plos.org/plospathogens/article/file?id=10.1371/journal.ppat.1003057&type](http://journals.plos.org/plospathogens/article/file?id=10.1371/journal.ppat.1003057&type=printable)
404 [=printable](http://journals.plos.org/plospathogens/article/file?id=10.1371/journal.ppat.1003057&type=printable)
- 405 5. Opatowski L, Baguelin M, Eggo RM. REVIEW Influenza Interaction with Cocirculating
406 Pathogens, and Its Impact on Surveillance, Pathogenesis and Epidemic Profile: A Key

- 407 Role for Mathematical Modeling. Hobman TC, editor. PLOS Pathog. 2017
408 Feb;14(2):e1006770–e1006770.
- 409 6. Kim MC, Kweon OJ, Lim YK, Choi SH, Chung JW, Lee MK. Impact of social distancing
410 on the spread of common respiratory viruses during the coronavirus disease outbreak.
411 PLOS ONE. 2021 Jun 14;16(6):e0252963.
- 412 7. GSK’s older adult respiratory syncytial virus (RSV) vaccine candidate shows 94.1%
413 reduction in severe RSV disease and overall vaccine efficacy of 82.6% in pivotal trial |
414 GSK [Internet]. [cited 2023 Jan 16]. Available from: [https://www.gsk.com/en-
415 gb/media/press-releases/gsk-s-older-adult-respiratory-syncytial-virus-rsv-vaccine-
416 candidate/](https://www.gsk.com/en-gb/media/press-releases/gsk-s-older-adult-respiratory-syncytial-virus-rsv-vaccine-candidate/)
- 417 8. Pfizer Announces Positive Top-Line Data of Phase 3 Global Maternal Immunization Trial
418 for its Bivalent Respiratory Syncytial Virus (RSV) Vaccine Candidate | Pfizer [Internet].
419 [cited 2023 Jan 16]. Available from: [https://www.pfizer.com/news/press-release/press-
420 release-detail/pfizer-announces-positive-top-line-data-phase-3-global](https://www.pfizer.com/news/press-release/press-release-detail/pfizer-announces-positive-top-line-data-phase-3-global)
- 421 9. Weinberger DM, Klugman KP, Steiner CA, Simonsen L, Viboud C. Association between
422 Respiratory Syncytial Virus Activity and Pneumococcal Disease in Infants: A Time Series
423 Analysis of US Hospitalization Data. PLOS Med. 2015 Jan 6;12(1):e1001776.
- 424 10. Meningher T, Hindiyeh M, Regev L, Sherbany H, Mendelson E, Mandelboim M.
425 Relationships between A(H1N1)pdm09 influenza infection and infections with other
426 respiratory viruses. Influenza Other Respir Viruses. 2014 Jul;8(4):422–30.
- 427 11. Hirsh S, Hindiyeh M, Kolet L, Regev L, Sherbany H, Yaary K, et al. Epidemiological
428 changes of Respiratory Syncytial Virus (RSV) infections in Israel. PLoS ONE [Internet].
429 2014;9(3). Available from:
430 <https://www.ncbi.nlm.nih.gov/pmc/articles/PMC3940902/pdf/pone.0090515.pdf>
- 431 12. Casalegno JS, Ottmann M, Bouscambert-Duchamp M, Valette M, Morfin F, Lina B.
432 Impact of the 2009 influenza a(H1N1) pandemic wave on the pattern of hibernal
433 respiratory virus epidemics, France, 2009. Eurosurveillance. 2010 Feb;15(6):2–2.
- 434 13. Gröndahl B, Ankermann T, Von Bismarck P, Rockahr S, Kowalzik F, Gehring S, et al.
435 The 2009 pandemic influenza A(H1N1) coincides with changes in the epidemiology of
436 other viral pathogens causing acute respiratory tract infections in children. Infection.
437 2014;42(2):303–8.
- 438 14. Mak GC, Wong AH, Ho WYY, Lim W. The impact of pandemic influenza A (H1N1) 2009
439 on the circulation of respiratory viruses 2009-2011. Influenza Other Respir Viruses. 2012
440 May;6(3):e6-10.
- 441 15. Navarro-Marí JM, Pérez-Ruiz M, Galán Montemayor JC, Marcos Maeso MÁ, Reina J, de
442 Oña Navarro M, et al. Circulation of other respiratory viruses and viral co-infection during
443 the 2009 pandemic influenza. Enfermedades Infecc Microbiol Clínica. 2012 Oct;30:25–
444 31.
- 445 16. Glezen WP, Paredes A, Taber LH. Influenza in Children. JAMA. 1980
446 Apr;243(13):1345–1345.
- 447 17. Anestad G, Nordbo SA. Interference between outbreaks of respiratory viruses. Euro
448 Surveill Bull Eur Sur Mal Transm Eur Commun Dis Bull. 2009 Oct;14(41):19359–19359.
- 449 18. Shinjoh M, Omoe K, Saito N, Matsuo N, Nerome K. In vitro growth profiles of respiratory
450 syncytial virus in the presence of influenza virus. Acta Virol. 2000 Apr;44(2):91–7.
- 451 19. Lee YJ, Lee JY, Jang YH, Seo SU, Chang J, Seong BL. Non-specific Effect of Vaccines:
452 Immediate Protection against Respiratory Syncytial Virus Infection by a Live Attenuated
453 Influenza Vaccine. Front Microbiol. 2018 Jan;9:83–83.
- 454 20. Walzl G, Tafuro S, Moss P, Openshaw PJ, Hussell T. Influenza virus lung infection

- 455 protects from respiratory syncytial virus-induced immunopathology. *J Exp Med*. 2000
456 Nov;192(9):1317–26.
- 457 21. Hamilton J. Club cells surviving influenza A virus infection induce temporary nonspecific
458 antiviral immunity.
- 459 22. Cohen C, Kleynhans J, Moyes J, McMorrow ML, Treurnicht FK, Hellferscee O, et al.
460 Asymptomatic transmission and high community burden of seasonal influenza in an
461 urban and a rural community in South Africa, 2017–18 (PHIRST): a population cohort
462 study. *Lancet Glob Health*. 2021 Jun 1;9(6):e863–74.
- 463 23. Moghadami M. A Narrative Review of Influenza: A Seasonal and Pandemic Disease.
464 *Iran J Med Sci*. 2017 Jan;42(1):2–13.
- 465 24. Eiland LS. Respiratory Syncytial Virus: Diagnosis, Treatment and Prevention. *J Pediatr*
466 *Pharmacol Ther JPPT*. 2009;14(2):75–85.
- 467 25. Jackson C. Multi-State Models for Panel Data: The msm Package for R. *J Stat Softw*.
468 2011 Jan 4;38:1–28.
- 469 26. Waterlow NR, Toizumi M, Leeuwen E van, Nguyen HAT, Myint-Yoshida L, Eggo RM, et
470 al. Evidence for Influenza and RSV interaction from 10 years of enhanced surveillance in
471 Nha Trang, Vietnam, a modelling study [Internet]. 2021 Oct [cited 2021 Dec 17] p.
472 2021.10.19.21265189. Available from:
473 <https://www.medrxiv.org/content/10.1101/2021.10.19.21265189v1>
- 474 27. Okiro EA, White LJ, Ngama M, Cane PA, Medley GF, Nokes DJ. Duration of shedding of
475 respiratory syncytial virus in a community study of Kenyan children. *BMC Infect Dis*.
476 2010 Dec;10(1):15–15.
- 477 28. George JA, AlShamsi SH, Alhammadi MH, Alsuwaidi AR. Exacerbation of Influenza A
478 Virus Disease Severity by Respiratory Syncytial Virus Co-Infection in a Mouse Model.
479 *Viruses*. 2021 Aug 18;13(8):1630.
- 480 29. De Paulis M, Gilio AE, Ferraro AA, Ferronato AE, do Sacramento PR, Botosso VF, et al.
481 Severity of viral coinfection in hospitalized infants with respiratory syncytial virus
482 infection. *J Pediatr (Rio J)*. 2011;87(4):307–13.
- 483 30. Asner SA, Science ME, Tran D, Smieja M, Merglen A, Mertz D, et al. Clinical Disease
484 Severity of Respiratory Viral Co-Infection versus Single Viral Infection: A Systematic
485 Review and Meta-Analysis. Available from:
486 <http://europepmc.org/backend/ptpmcrender.fcgi?accid=PMC4059637&blobtype=pdf>
- 487 31. Waterlow NR, Flasche S, Minter A, Eggo RM. Competition between RSV and influenza:
488 limits of modelling inference from surveillance data. *Epidemics*. 2021 Mar 26;100460.
- 489 32. Rubin GJ, Amlôt R, Page L, Wessely S. Public perceptions, anxiety, and behaviour
490 change in relation to the swine flu outbreak: cross sectional telephone survey. *BMJ*.
491 2009 Jul 2;339:b2651.
- 492 33. Henderson FW, Collier AM, Clyde WA, Denny FW. Respiratory-Syncytial-Virus
493 Infections, Reinfections and Immunity. *N Engl J Med*. 1979 Mar;300(10):530–4.

494
495
496

497 **Declaration of Interests:** No conflicts of interest.

498

499 **Funding acknowledgment:** The study was funded through a cooperative agreement with
500 the United States Centers for Disease Control and Prevention (CDC) (grant number
501 1U01IP001048). Testing for RSV was supported by the Bill and Melinda Gates Foundation

502 (Grant number: OPP1164778). The data analyses were supported by Germany's Innovation
503 Fund of the Joint Federal Committee (grant no. 01VSF18015).