

1 **Title: Provider-led community Antiretroviral Therapy distribution in Malawi: Retrospective**
2 **cohort study of retention, viral load suppression, and costs.**

3 John Songo¹, Hannah Whitehead², Brooke Nichols³, Amos Makwaya¹, Joseph Njala¹, Sam
4 Phiri^{1,4}, Risa M. Hoffman², Kathryn Dovel² Khumbo Phiri¹, Joep J. van Oosterhout^{1,2}

5 **Affiliations**

6 ¹Partners in Hope, Lilongwe, Malawi;

7 ²Department of Medicine, Division of Infectious Diseases, David Geffen School of Medicine,
8 UCLA, Los Angeles, California, USA;

9 ³FIND, Geneva, Switzerland.

10 ⁴Department of Public Health and Family Medicine, Kamuzu University of Health Sciences,
11 Lilongwe, Malawi

12

13 **Corresponding Author:** John Songo

14 **Email:** pemphosongo@gmail.com

15

16 **Abstract**

17 **Background:** Outcomes of community antiretroviral therapy (ART) distribution (CAD), in which
18 provider-led ART teams deliver integrated HIV services at health posts in communities, have
19 been mixed in sub-Saharan African countries. CAD outcomes and costs relative to facility-based
20 care have not been reported from Malawi.

21 **Methods:** We performed a retrospective cohort study in two Malawian districts (Lilongwe and
22 Chikwawa districts), comparing CAD with facility-based ART care. We selected an equal number
23 of clients in CAD and facility-based care who were aged >13 years, had an undetectable viral
24 load (VL) result in the last year and were stable on first-line ART for ≥ 1 year. We compared
25 retention in care (alive and no period of ≥ 60 days without ART) using Kaplan-Meier survival
26 analysis and Cox regression and maintenance of VL suppression ($< 1,000$ copies/mL) during
27 follow-up using logistic regression. We also compared costs (in US\$) from the health system
28 and client perspectives for the two models of care. Data were collected in October and
29 November 2020.

30 **Results:** 700 ART clients (350 CAD, 350 facility-based) were included. The median age was 43
31 years (IQR 36-51), median duration on ART was 7 years (IQR 4-9), and 75% were female.
32 Retention in care did not differ significantly between clients in CAD (89.4% retained) and
33 facility-based care (89.3%), $p=0.95$. No significant difference in maintenance of VL suppression
34 were observed between CAD and facility-based care (aOR: 1.24, 95% CI: 0.47-3.20, $p=0.70$).
35 CAD resulted in slightly higher health system costs than facility-based care: \$118/year vs.
36 \$108/year per person accessing care; and \$133/year vs. \$122/year per person retained in care.

37 CAD decreased individual client costs compared to facility-based care: \$3.20/year vs.
38 \$11.40/year per person accessing care; and \$3.60/year vs. \$12.90/year per person retained in
39 care.

40 **Conclusion:** Clients in provider-led CAD care in Malawi had very good retention in care and VL
41 suppression outcomes, similar to clients receiving facility-based care. While health system costs
42 were somewhat higher with CAD, costs for clients were reduced substantially. More research is
43 needed to understand the impact of other differentiated service delivery models on costs for
44 the health system and clients.

45 **Introduction**

46 Antiretroviral therapy (ART) coverage has expanded greatly in sub-Saharan Africa and Malawi
47 over the past 20 years (1). The sharply risen number of ART clients has resulted in health
48 system challenges such as long waiting times, insufficient staffing and limited space (2).
49 Together with the need for more client-centered and tailored care, such challenges have
50 inspired innovative ways of delivering care to clients, broadly referred to as differentiated
51 service delivery (DSD) models (3). Provider-led and community-led Community ART Distribution
52 (CAD) DSD models have been implemented in Sub-Saharan Africa since 2010 (4). In provider-
53 led CAD, a team of health care workers (HCWs) travels to small, community-based health posts
54 to provide comprehensive HIV services, including dispensing ART refills, on scheduled days. In
55 community-led CAD, ART clients form groups and one community member collects ART refills at
56 the facility for the whole group (5). Compared to facility-based services, CAD brings HIV care
57 closer to people's homes, thereby reducing travel time, travel costs and opportunity costs,
58 which may improve adherence and facilitate retention in care (3,6).

59 Despite widespread implementation of CAD across sub-Saharan Africa, evidence regarding its
60 effectiveness and cost-effectiveness in improving retention and viral load (VL) suppression is
61 limited, outcomes have varied and none have been reported from Malawi. An early systematic
62 review of studies from sub-Saharan Africa suggested that retention in care is higher in provider-
63 and community-led CAD than in standard facility-based care (6), but two later randomized trials
64 in Zimbabwe and Lesotho found that retention in care and VL suppression did not differ
65 significantly between health facility-based care, community-led CAD, and provider-led CAD

66 (7,8). Compared to standard facility-based care, CAD models had higher health system cost per
67 client retained in care at 12 months in Zambia (9).

68 Comparing retrospective cohort data from clients receiving provider-led CAD and clients
69 receiving facility-based care, we sought to evaluate the impact of provider-led CAD services on
70 retention and VL suppression in Malawi. We also assess differences in cost between provider-
71 led CAD services and facility-based care from a health systems and individual client perspective.

72 **Methods**

73 ***Study setting***

74 Partners In Hope (PIH) is a Malawian non-governmental organization that provides PEPFAR-
75 funded support for HIV services in Malawi's National HIV program. PIH implements a provider-
76 led CAD model for stable (suppressed VL <1,000 copies/mL and on first-line ART) individuals at
77 4 health facilities in Lilongwe (urban setting, n=2) and Chikwawa (rural setting, n=2) districts,
78 with a total of 20 CAD outreach sites. Provider-led CAD follows a hub-and-spoke model where a
79 team of HCWs travels once a month from the hub (a large health facility) to a spoke (a village-
80 based health post). The team is generally led by a nurse or occasionally a clinical officer, and
81 includes an HIV diagnostic assistant (HDA), Treatment Supporter, counsellor and driver. Once a
82 quarter, a data clerk joins the team. Services provided at CAD spokes include ART refills, VL
83 sample collection, HIV testing services, family planning, screening for non-communicable
84 diseases, referral to community services and adherence assessment and counselling.

85 ***Study design and data collection***

86 We conducted a retrospective cohort study making use of routinely collected data from
87 standard medical records of 700 ART clients receiving ART care through CAD or health facility-
88 based services. Data were collected in October-November 2020, from two ‘hub’ health facilities
89 in Chikwawa and two in Lilongwe, and 20 associated CAD ‘spoke’ sites. We selected all the
90 clients registered in CAD between January 2019 (when CAD implementation began) and June
91 2019, and collected data from their first visit through August 2020 to allow for 14 months of
92 observation time. Clients can choose to be enrolled into provider-led CAD if they meet
93 programmatic criteria: being stable on first-line ART for more than 12 months, registered at a
94 hub site, ready to disclose HIV status to other members of the CAD spoke, undetectable result
95 of the last VL test (within 12 months), and age 13 years or older. We then compiled a list of
96 individuals receiving standard care at the four hub facilities (“controls”). The inclusion criteria
97 for controls were the same as for CAD enrolment mentioned above, except for the disclosure
98 criterion. The number of controls included for each hub was equal to the number of CAD clients
99 enrolled from that hub facility’s CAD spokes. We selected hub controls chronologically, starting
100 with those who had visited the facility in January 2019, and proceeding until the required
101 number of clients was reached.

102 We extracted data on all recorded visits for 14 months after study entry from clients’ individual
103 ART master-cards. A 14-month period was used to be able to capture full 1-year outcomes,
104 including defaulting, as defined below. Collected data included: demographic characteristics,
105 ART initiation date, dates of all CAD/facility visits, results of annual routine VL tests, and
106 standardized ART outcomes (default, transfer out, stopped ART, death). All data were collected

107 on Android tablets using the SurveyCTO electronic data collection platform. Additional VL test
108 results were extracted from the National Laboratory Information Systems Management (LIMS)
109 Database, if missing on ART master-cards. No personal identifiers were collected from the data
110 sources and therefore all data were anonymized. Ethical approval for the study was obtained
111 from the National Health Sciences Research Committee in Malawi (#1099).

112 ***Key study definitions***

113 *Adverse outcome:* recorded to have died, defaulted or stopped ART during follow-up. For
114 individuals with multiple adverse outcomes recorded, the earliest outcome was used for all
115 analyses. For example, if a client had defaulted, then returned to care, and subsequently died,
116 they were classified as having defaulted.

117 *Defaulted:* per national guidelines, defaulting from care was defined as being overdue for an ART
118 refill appointment and estimated to have run out of ARVs for 2 months or longer, based on the
119 quantity of ARVs dispensed at the last visit (10).

120 *Viral load outcomes:* VL results were categorized according to national HIV guidelines: high VL
121 (≥ 1000 copies/mL); low level viremia (200-999 copies/mL); or suppressed VL (undetectable-199
122 copies/mL). For logistic regression analyses, we applied a commonly-used binary VL outcome:
123 < 1000 copies/mL and ≥ 1000 copies/mL (11). VL results were only included from samples taken
124 at least 6 months and no more than 18 months after enrollment into CAD or from the first visit
125 in the study period for controls. We extended the period for VL results from 14 to 18 months due
126 to the infrequency of VL testing during the study period.

127 **Statistical analysis**

128 Descriptive statistics were generated for client characteristics and outcomes. We compared
129 viral load outcomes between the two models of care using chi-square tests and logistic
130 regression. We used Kaplan-Meier survival analysis methods to compare retention in care at
131 CAD spokes versus hub facilities over the 14 months of follow-up. Each client started
132 contributing person-time to the analysis from the day that they were enrolled into CAD or
133 the earliest day that they visited the hub facility between January 2019 and June 2019. Follow-
134 up time of clients who transferred to another health facility and of those who remained in care
135 at the end of the follow-up period was censored on their last recorded visit day within the 14
136 months follow up period. We used Cox regression to produce crude and adjusted hazard ratios
137 (aHR) of experiencing an adverse outcome, adjusting for sex, age and district.

138 Univariate analysis of the association between key outcome variables and the intervention
139 were stratified by gender to take into account significant gender differences across the HIV care
140 cascade in Malawi (12).

141 We assessed the extent of missing data in the sample by key outcome variables and covariates
142 (retention, VL suppression, sex, age and district). Only VL suppression had missing data (21%)
143 but the missing data did not vary by arm of intervention (CAD/hub) ($p= 0.09$). All observations
144 with missing data on VL suppression were excluded from the analysis on VL suppression.

145 All analyses were conducted with Stata v17 (Stata Corp., Texas, USA).

146 **Cost analysis**

147 We calculated the cost per person retained for both facility-based care and CAD care from a
148 health systems and individual client perspective.

149 Table 1 describes the unit costs collected locally or derived from the literature for both the cost
 150 to the health system and the cost to the client. For health systems cost per CAD spoke clinic
 151 day, we include all additional activities required to successfully implement a CAD visit, including
 152 use of a vehicle to and from the CAD (average of 32km round-trip per CAD visit), and the cost of
 153 a day of the full clinical team’s services. The total costs were divided by the number of visiting
 154 clients to each CAD included in the study to determine the cost per individual client CAD visit.

155 **Table 1** Unit costs included in analysis

Variable	Unit cost (USD) 2022	Sources
Provider costs		
Hub clinic visit	\$2.90	(13)
CAD spoke visit	\$5.95	Program implementation data (2022)
ART day (first-line)	\$0.21	(13)
Viral load	\$14.2	(13)
Cost to client		
Wage lost for hub facility visit*	\$2.50	In-country information
Wages lost for CAD spoke visit**	\$0.625	In-country information

156 *1 day of minimum wage lost; **0.25 day of minimum wage lost

157 Results

158 *Sample characteristics at enrolment*

159 We collected data on 700 ART clients, 350 from provider-led CAD and 350 from facility care
 160 (Table 2). Approximately 75% of both CAD and hub clients were female. Clients at CAD spokes
 161 were older (45.3 vs. 42.2 years) and had been on ART for longer (7.2 vs. 6.4 years).

162 **Table 2.** Characteristics of clients at enrollment in CAD spokes and at hub health facilities (controls)

Variable	Overall		CAD spokes		Hub facilities	
	n	%	n	%	n	%
Total	700	100	350	50.0	350	50.0
Age						
Median, years (IQR)	43.8 (36.5- 51.4)		45.3 (38.3- 54.1)		42.2 (34.6- 49.4)	
13-24 years	27	3.9	10	2.8	17	4.9
25-34 years	111	15.9	38	10.8	73	20.9
35-44 years	246	35.1	123	35.1	123	35.1
45-54 years	182	26.0	97	27.7	85	24.2
55+ years	134	19.1	82	23.4	52	14.9
Sex						
Male	178	25.4	87	24.9	91	26.0
Female	522	74.6	263	75.1	259	74.0
Duration on ART						
Median (IQR)	6.8 (4.1- 9.7)		7.2 (4.2- 9.9)		6.4 (3.9- 9.3)	
<4year	171	24.4	81	23.1	90	25.7
4-8years	251	35.9	119	34.0	132	37.7
>8years	278	39.7	150	42.9	128	36.6
District						
Lilongwe	228	32.6	114	32.6	114	32.6
Chikwawa	472	67.4	236	67.4	236	67.4

163

164 **Client outcomes**

165 *Descriptive outcomes at 14 months of follow up*

166 At the end of the 14-months of follow-up, approximately 1% of participants had died, 10% had
 167 defaulted, and 5% had transferred to another health facility. Differences in standard client
 168 outcomes between CAD and facility-based care were minimal and not statistically significant,
 169 either overall or when stratified by sex (Table 3).

170 **Table 3** Client outcomes at 14 Months

Outcome	Overall					Males					Females				
	n	%	n	%	p-value	n	%	n	%	p-value	n	%	n	%	p-value
Died	4	1.1	3	0.9		3	3.4	2	2.2		1	0.4	1	0.4	
Stopped ART	0	0.0	0	0.0		0	0.0	0	0.0		0	0.0	0	0.0	
Defaulted	35	10.0	34	9.7	0.619	13	14.9	11	12.1	0.832	22	8.4	23	8.9	0.387
Transferred Out	12	3.4	19	5.4		4	4.6	3	3.3		8	3.0	16	6.2	
Alive on ART	299	85.4	294	84.0		67	77.0	75	82.4		232	88.2	219	84.6	
Total	350	100	350	100		87	100	91	100		263	100	259	100	

171

172 *Kaplan-Meier survival estimates of retention in care at 14 months of follow up.*

173 The average follow-up time was 11.6 months for clients at CAD spokes and 11.1 months at hub
 174 facilities. The cumulative probability of retention in care over the follow-up period was not
 175 significantly different between clients in provider-led CAD and facility-based HIV care (88.4% vs.

176 88.3%; p-value 0.95) (Figure 1). Sex was the only covariate with a statistically significant impact
177 on retention in the total study population (males 80.4% vs. females 90.8%; p =0.005) (Figure 2).

178

179 *Figure 1: Kaplan-Meier survival estimates of retention over 14 months of follow up by model of*
180 *care*

181 *Figure 2: Kaplan-Meier survival estimates of retention over 14 months of follow up by gender*

182

183 Controlling for sex, age, and district of residence, the risk of experiencing an adverse outcome
184 was similar for clients in provider-led CAD and facility-based care (aHR: 1.05, 95%CI: 0.66-1.66,
185 P-value: 0.80)

186 ***Viral load outcomes***

187 VL test results were available for 553 clients, representing 79% of the overall sample (82% of
188 CAD clients; 76% of hub clients; p= 0.09). In univariable analyses, standard VL outcomes were
189 not significantly different between CAD and health facility-based care, whether overall or
190 stratified by sex (Table 4). After adjusting for sex, duration on ART, age, and district of
191 residence, there was no significant difference in prevalence of VL <1,000 copies/ml between
192 clients in CAD (97%) and in hub care (96%): aOR 1.24, 95% CI 0.47-3.26, p-value 0.66.

193

194

195

196 **Table 4** Viral load suppression

VL	Overall					Males					Females				
	CAD		Hub		p-value	CAD		Hub		p-value	CAD		Hub		p-value
	n	%	n	%		n	%	n	%		n	%			
≥1000 copies/ml	8	2.8	10	3.7	0.260	2	3.0	2	3.1	0.264	6	2.7	8	3.9	0.552
200-999 copies/mL	57	20.0	40	14.9		14	21.2	7	10.8		43	19.6	33	16.3	
undetectable-199 copies/mL	220	77.2	218	81.3		50	75.8	56	86.2		170	77.6	162	79.8	
Total	285	100	268	100		66	100	65	100		219	100	203	100	

197

198 **Costs**

199 Table 5 describes the resources used per client for both CAD-based and facility-based care.

200 Differences in resource use, considering the standard deviations, were small between the

201 models of care.

202 **Table 5** Resource utilization of CAD-based care and facility-based care in Malawi (average and standard

203 deviation)

Variable	CAD-based care	Facility-based care
Number of clinic visits	0	4.6 (SD 1.4)
Number of CAD visits	5.1 (SD 1.5)	0
Number of ART days	351 (SD 92)	383 (SD 91)
Number of viral load tests	0.9 (SD 0.7)	1.0 (SD 0.6)

204

205 The total costs per person receiving care and the costs per person retained by model of care,

206 from a health systems and individual client perspective, are described in Table 6. Health system

207 cost estimates for provider-led CAD were \$118 per person receiving care per year and \$108 per

208 person per year in facility-based care. Cost for individual clients was lower in provider-led CAD

209 (\$3.17 per person per year) than facility-based care (\$11.44 per person per year). In a second
210 analysis limited to those retained in care, the gap in health systems costs between the two
211 models of care was the same (\$10 lower in provider-led CAD), while differences in costs for
212 clients widened slightly (from \$8.27 reduced cost per client to \$9.30 reduced cost for client
213 retained in provider-led CAD).

214 *Table 2. Cost per person in care and cost per person retained comparing facility- and provider-led CAD-*
215 *(based on 2022 USD)*

Variable	CAD	Facility-based care
Health system cost		
Cost per client	\$118 (SD \$29)	\$108 (SD \$24)
Cost per client retained	133	122
Client cost		
Cost per client	\$3.17 (SD \$0.96)	\$11.44 (SD \$3.53)
Cost per client retained	3.58	12.88

216

217 Discussion

218 In a retrospective assessment of two models of HIV care in Malawi, we found that retention in
219 care and viral suppression outcomes were similar in provider-led CAD as compared to facility-
220 based care. While health system cost per person provided care and per person retained in care
221 were 9% higher in provider-led CAD, cost for 12-months of HIV care incurred by clients was 72%
222 lower in CAD than in facility-based care.

223 Prior studies of CAD in sub-Saharan Africa had mixed findings. In two similar cluster randomized
224 trials, one in Lesotho and one in Zimbabwe, no significant differences in retention in care and
225 VL suppression were observed between facility-based 3-monthly ART (control), 3-monthly
226 community ART groups, and 6-monthly provided-led CAD (7,8). In contrast, in a retrospective

227 cohort study from Mozambique, retention in care was significantly higher among clients in
228 community-led CAD (at 99.1% at 12 months) than in facility-based care (89.5%, $p < 0.0001$) (14).
229 In the same setting, another retrospective cohort study found that individuals in facility-based
230 care were more than twice as likely to be lost to follow up (HR 2.356; $p = 0.04$) than matched
231 participants in community-led CAD (5). Differences in the organization of CAD services,
232 variations in the local setting (including rural vs. urban) and the degree of donor support may
233 explain these variations in ART outcomes. It has been suggested that in community-led CADs,
234 clients acquire ownership of their ART care, as group representatives take turns to collect ART
235 at the facility for the whole group and members actively trace group members who miss a
236 group ART distribution session (14). Such activities may increase group members' ability to self-
237 manage their own care (15) and lead to better retention and VL suppression. To date, CADs are
238 largely only available to stable ART clients and this presents potential missed opportunities to
239 engage non-stable clients in CAD.

240 From a health systems perspective, provider-led CAD is slightly more expensive than facility-
241 based care. The difference was relatively small (9% higher, or approximately \$10 more per
242 person receiving care per year). Additional costs are due to HCWs traveling to CAD locations,
243 but the vast majority of ART costs are generated by medication and VL testing, which do not
244 vary by provider-led CAD or facility-based care. However, we found that provider-led CAD
245 substantially reduced costs for clients by nearly three-quarters, mainly due to lower
246 opportunity costs as clients need less travel time to access ART services. Health system costs of
247 provider-led CAD can be reduced by decreasing the frequency of the team's travels to
248 distribution sites, in combination with expansion of multi-month dispensing. This may also

249 further reduce clients' costs and could benefit retention and viral suppression outcomes (16).
250 Our results are consistent with findings from the only other study from the region that assessed
251 costs and outcomes across community-based ART models. In this study from Zambia, costs for
252 CAD models ranged from an annual \$116/person to \$199/person compared with \$100/person
253 for facility-care (9).

254 A limitation of our cost analysis is that we did not incorporate travel costs for clients (cost of
255 transportation to/from facility-based care) as many clients walk, use their own bicycle or make
256 informal arrangements that are not directly tied to financial cost. It is therefore highly likely
257 that we underestimated the difference in clients' costs and provider-led CAD may have a
258 greater financial benefit to clients than reported here. This is supported by a qualitative study
259 on client and nurse perspectives of provider-led community-based models of HIV care in
260 Malawi, where clients reported that CAD services resulted in savings on transportation costs
261 and the time it took them to travel to a health facility (17).

262 As is common with observational studies, our results may be prone to bias as clients enrolled in
263 CAD are selected based on specific characteristics, such as being clinically stable, which cannot
264 be completely adjusted for in statistical analyses. However, great effort was put into ensuring
265 that the eligibility criteria used for enrolment into CAD is adhered to during selection of
266 controls through a strict study enrolment protocol that was double checked at data collection
267 and at analysis.

268 **Conclusions**

269 Provider-led CAD services in Malawi had excellent one-year retention and VL suppression
270 results that were similar to facility-based care. CAD was associated with a small increase in the

271 financial costs to the health system but substantial savings for clients, which may benefit longer
272 term engagement in care and ART outcomes. More study is need to determine cost-
273 effectiveness of different DSD models in sub-Saharan Africa.

274 ***Acknowledgements.***

275 We are grateful for funding by PEPFAR through USAID that allowed Partners in Hope to
276 implement the provider-led CAD program and to collect the data for this analysis. We also
277 thank the support of the participating health facilities and their management teams.

278 References

- 279 1. Geneva: Joint United Nations Programme on HIV/AIDS. UNAIDS data 2021 [Internet].
280 2021. Available from:
281 [https://www.unaids.org/sites/default/files/media_asset/JC3032_AIDS_Data_book_2021](https://www.unaids.org/sites/default/files/media_asset/JC3032_AIDS_Data_book_2021_En.pdf)
282 [_En.pdf](https://www.unaids.org/sites/default/files/media_asset/JC3032_AIDS_Data_book_2021_En.pdf)
- 283 2. Kalua T, Tippett Barr BA, van Oosterhout JJ, Mbori-Ngacha D, Schouten EJ, Gupta S, et al.
284 Lessons Learned From Option B+ in the Evolution Toward “Test and Start” From Malawi,
285 Cameroon, and the United Republic of Tanzania. *JAIDS J Acquir Immune Defic Syndr*
286 [Internet]. 2017 May 1;75(1):S43–50. Available from:
287 [http://insights.ovid.com/crossref?an=00126334-201705011-](http://insights.ovid.com/crossref?an=00126334-201705011-00007%0Ahttp://www.ncbi.nlm.nih.gov/pubmed/28398996)
288 [00007%0Ahttp://www.ncbi.nlm.nih.gov/pubmed/28398996](http://insights.ovid.com/crossref?an=00126334-201705011-00007%0Ahttp://www.ncbi.nlm.nih.gov/pubmed/28398996)
- 289 3. Davis N, Kanagat N, Sharer M, Eagan S, Pearson J, Amanyeiwe UU. Review of
290 differentiated approaches to antiretroviral therapy distribution. *AIDS Care - Psychol*
291 *Socio-Medical Asp AIDS/HIV* [Internet]. 2018;30(8):1010–6. Available from:
292 <https://doi.org/10.1080/09540121.2018.1441970>
- 293 4. Vogt F, Kalenga L, Lukela J, Salumu F, Diallo I, Nico E, et al. Brief Report: Decentralizing
294 ART Supply for Stable HIV Patients to Community-Based Distribution Centers: Program
295 Outcomes From an Urban Context in Kinshasa, DRC. *JAIDS J Acquir Immune Defic Syndr*
296 [Internet]. 2017 Mar 1;74(3):326–31. Available from:
297 <https://journals.lww.com/00126334-201703010-00014>
- 298 5. Jobarteh K, Shiraishi RW, Malimane I, Gudo PS, Decroo T, Auld AF, et al. Community ART
299 support groups in Mozambique: The potential of patients as partners in care. *PLoS One*.
300 2016;11(12):1–14.
- 301 6. Decroo T, Rasschaert F, Telfer B, Remartinez D, Laga M, Ford N. Community-based
302 antiretroviral therapy programs can overcome barriers to retention of patients and
303 decongest health services in sub-Saharan Africa: a systematic review. *Int Health*
304 [Internet]. 2013 Sep 1;5(3):169–79. Available from:
305 <https://academic.oup.com/inthealth/article-lookup/doi/10.1093/inthealth/iht016>
- 306 7. Fatti G, Ngorima-Mabhena N, Mothibi E, Muzenda T, Choto R, Kasu T, et al. Outcomes of
307 Three- Versus Six-Monthly Dispensing of Antiretroviral Treatment (ART) for Stable HIV
308 Patients in Community ART Refill Groups: A Cluster-Randomized Trial in Zimbabwe. *J*
309 *Acquir Immune Defic Syndr*. 2020;84(2):162–72.
- 310 8. Tukei BB, Fatti G, Tiam A, Ngorima-Mabhena N, Tukei VJ, Tshabalala I, et al. Twelve-
311 Month Outcomes of Community-Based Differentiated Models of Multimonth Dispensing
312 of ART Among Stable HIV-Infected Adults in Lesotho: A Cluster-Randomized
313 Noninferiority Trial. *J Acquir Immune Defic Syndr*. 2020;85(3):280–91.
- 314 9. Nichols BE, Cele R, Jamieson L, Long LC, Siwale Z, Banda P, et al. Community-based
315 delivery of HIV treatment in Zambia: costs and outcomes. *AIDS*. 2021;35(2):299–306.

- 316 10. Malawi Ministry of Health. Clinical Management of HIV in Children and Adults. Lilongwe;
317 2018.
- 318 11. World Health Organization. Consolidated guidelines on HIV prevention, testing,
319 treatment, service delivery and monitoring: recommendations for a public health
320 approach. Geneva; 2021.
- 321 12. United Nations Programme on HIV/aids. UNAIDS. UNAIDS data 2021 [Internet]. 2021.
322 Available from:
323 https://www.unaids.org/en/resources/documents/2021/2021_unaids_data
- 324 13. Nichols BE, Oforjebe OA, Cele R, Shaba F, Balakasi K, Chivwara M, et al. Economic
325 evaluation of facility-based HIV self-testing among adult outpatients in Malawi. *J Int AIDS*
326 *Soc* [Internet]. 2020 Sep 9;23(9):e25612. Available from:
327 <https://onlinelibrary.wiley.com/doi/10.1002/jia2.25612>
- 328 14. Decroo T, Telfer B, Dores C Das, White RA, Santos N Dos, Mkwamba A, et al. Effect of
329 Community ART Groups on retention-in-care among patients on ART in Tete Province,
330 Mozambique: A cohort study. *BMJ Open*. 2017;7(8):1–9.
- 331 15. Dudhia R, Kagee A. Experiences of participating in an antiretroviral treatment adherence
332 club. *Psychol Health Med* [Internet]. 2015 May 19;20(4):488–94. Available from:
333 <http://www.tandfonline.com/doi/full/10.1080/13548506.2014.953962>
- 334 16. Rasschaert F, Telfer B, Lessitala F, Decroo T, Remartinez D, Biot M, et al. A qualitative
335 assessment of a community antiretroviral therapy group model in Tete, Mozambique.
336 *PLoS One*. 2014;9(3):1–11.
- 337 17. Sande O, Burtscher D, Kathumba D, Tweya H, Phiri S, Gugsa S. Patient and nurse
338 perspectives of a nurse-led community-based model of HIV care delivery in Malawi: A
339 qualitative study. *BMC Public Health*. 2020;20(1):1–8.
- 340

Kaplan-Meier survival estimates by CAD/Hub

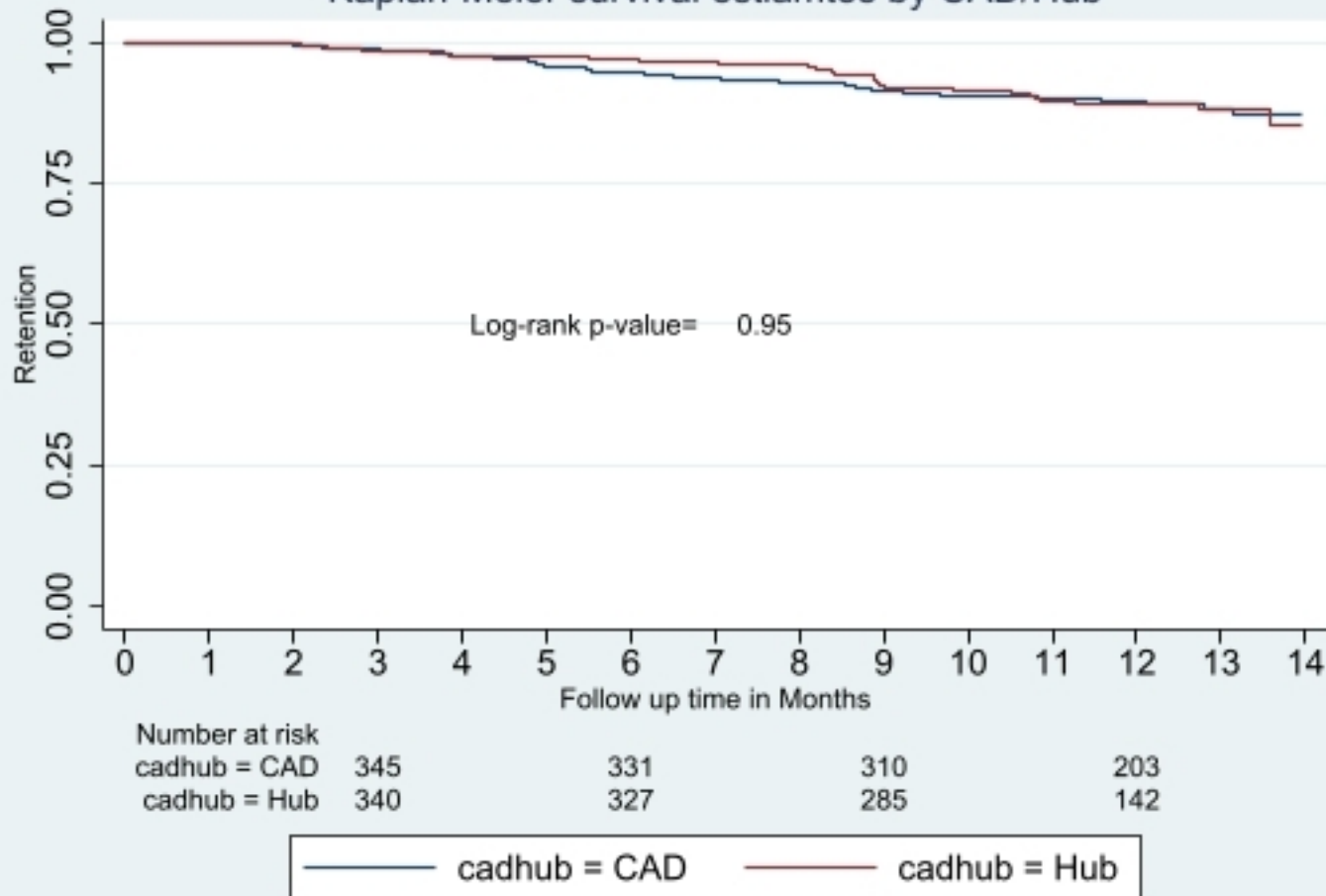


Figure 1

Kaplan-Meier survival estimates by gender

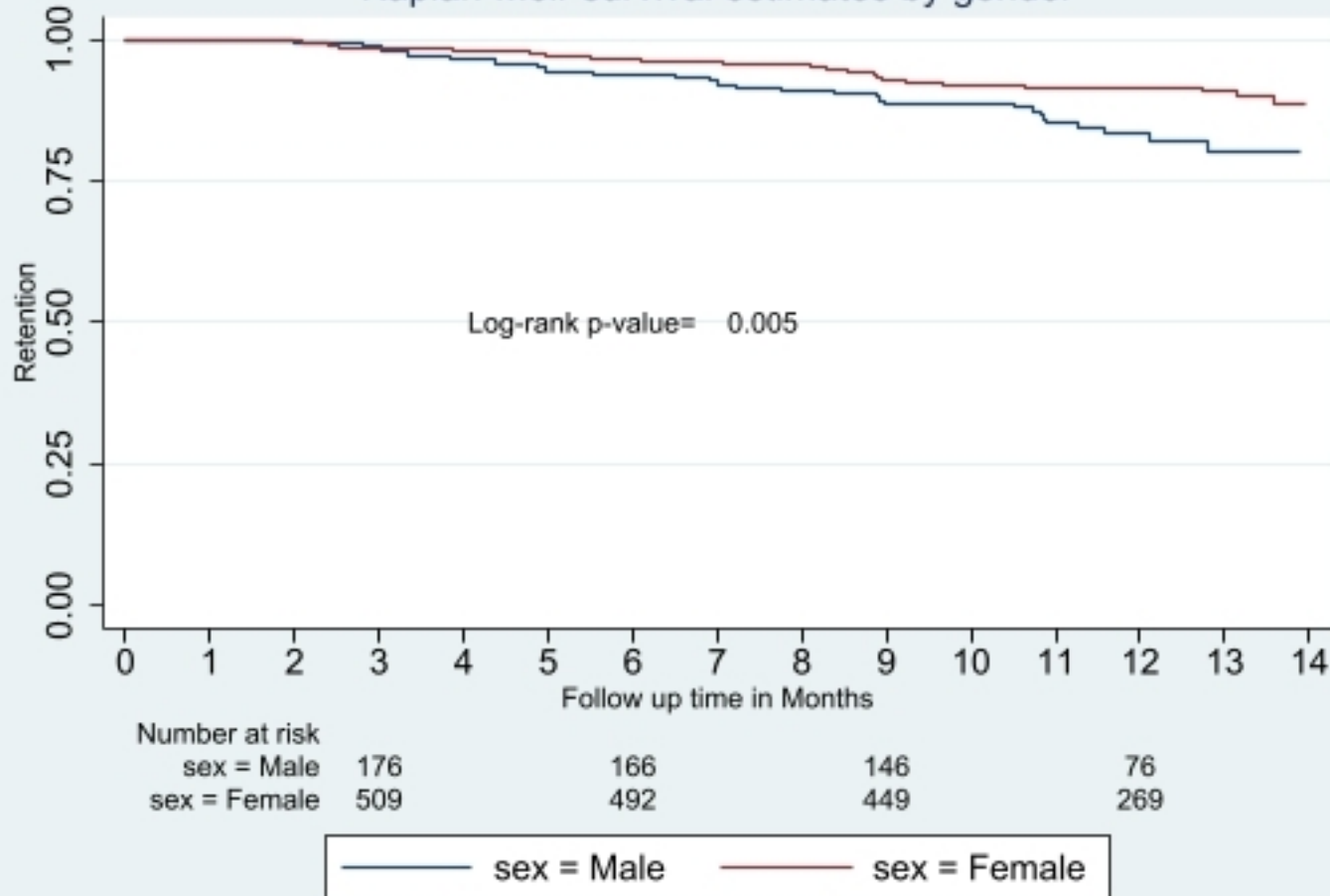


Figure 2