

1 **A review of behavioural rating scales for the assessment of Attention**
2 **Deficit/Hyperactivity Disorder among adults in research.**

3 Authorship

4 Marius Grandjean^{1,2}, Shachar Hochman¹, Raja Mukherjee³, Roi Cohen Kadosh¹

5 ¹School of Psychology, University of Surrey, Guildford GU2 7XH, United Kingdom

6 ²Psychological Sciences Research Institute, UCLouvain, Louvain-la-Neuve, Belgium

7 ³Adult Neurodevelopmental Service, Horizon House, Epsom, KT17 4QJ, United Kingdom

8 Correspondence: Dr Shachar Hochman (s.hochman@surrey.ac.uk)

9

10 **Abstract**

11 **Objective:** This review aims to provide researchers with a contemporary and comprehensive
12 understanding of the current state of behavioural rating scales used in evaluating adult ADHD
13 for research purposes. The objective is to offer guidance that enables researchers to make
14 informed decisions when selecting the most suitable scale for their studies. Moreover, our
15 intention was to map and compare these scales, with a specific focus on detecting feigned or
16 invalid symptom presentation—an aspect notably overlooked in prior reviews.

17 **Method:** We reviewed the most recent literature on behavioural rating scales for adult ADHD
18 assessment. We evaluated the scales and compared them based on their psychometric
19 properties and the range of symptoms that they assessed.

20 **Results:** The Conners' Adult ADHD Rating Scales (CAARS), Mind Excessively Wandering Scale
21 (MEWS), and Wender Utah Rating Scale (WURS) have emerged as the most accurate measures
22 for assessing adult ADHD. Moreover, there is an increasing emphasis on the development of
23 assessment tools, either integrated within existing scales or as independent measures, to
24 evaluate feigning or invalid symptom presentation. In that regard, stand-alone measures have
25 demonstrated greater effectiveness compared to embedded measures, with the ADHD
26 Symptom Infrequency Scale (ASIS) being identified as the most accurate scale for the detection
27 of feigning.

28 **Conclusion:** Based on this review, we provide recommendations for the behavioural rating
29 scales with the most accurate measurement of relevant variables in research-related settings.

30 **Keywords**

31 Attention deficit hyperactivity disorder; behavioural rating scale; questionnaire;
32 psychometrics; adult; assessment.

33

34 **Introduction**

35 Attention Deficit Hyperactivity Disorder (ADHD) is a neurodevelopmental disorder exhibiting
36 clinical heterogeneity, marked by the presence of a sustained tendency towards inattention
37 and distractibility, as well as hyperactivity and impulsivity, causing interference in functioning
38 or development (American Psychiatric Association, 2022). In many cases, ADHD continues to
39 affect individuals into adulthood, and can be associated with an increased risk of developing
40 other mental health disorders, as well as negative outcomes such as educational
41 underachievement, challenges with employment and interpersonal relationships, and
42 potential involvement with criminal activities (Sayal et al., 2018). The phenomenon of adult
43 ADHD can be differentiated into two distinct subtypes, namely persistent and symptomatic
44 adult ADHD. The former subtype is characterised by the enduring presence of ADHD
45 symptoms over an extended period, spanning from childhood through adulthood. Conversely,
46 the latter subtype refers to the presence of clinically significant symptoms of ADHD that cause
47 impairment in daily functioning without a specific childhood-onset (Song et al., 2021). Recent
48 research has reported the global prevalence rates of persistent and symptomatic adult ADHD
49 to be 2.58% and 6.76% respectively, corresponding to 139.84 million and 366.33 million of
50 affected adults worldwide (Song et al., 2021).

51 When assessing adult ADHD, various methods are used, including interviews, continuous
52 performance tests (CPTs), and behavioural rating scales. CPTs are computer-based
53 neuropsychological tests that require the individual to respond to a series of stimuli,
54 measuring specific cognitive functions that are impaired in ADHD. Meanwhile, behavioural
55 rating scales are subjective measures completed by either the individual or an informant.
56 These scales usually assess the frequency and severity of ADHD-related behaviours. While
57 clinical interviews have often been regarded as the gold standard for ADHD assessment
58 (Murphy & Gordon, 1998; Ramsay, 2015), a recent comprehensive review by Marshall et al.
59 (2021) found that a combination of interviews, CPTs and behavioural rating scales result in the
60 highest rate of diagnostic accuracy. Unfortunately, such an extensive intervention may not
61 always be feasible (Kessler et al., 2005), and it is resource intensive. In research settings,
62 behavioural rating scales and/or CPTs are often used as the primary outcome of studies on
63 new treatment for ADHD (Allenby et al., 2018; Alyagon et al., 2020; Berger et al., 2021;
64 McGough et al., 2019; Nahum et al., 2023; Paz et al., 2018; Weaver et al., 2012). While several

65 studies have examined the effectiveness of CPTs (Baggio et al., 2020; Epstein et al., 2003;
66 Ogundele et al., 2011; Riccio & Reynolds, 2001; Vaughn et al., 2011), only a few have assessed
67 the usefulness of behavioural rating scales (Harrison & Edwards, 2023; Marshall et al., 2021;
68 Taylor et al., 2011). Given their relatively low cost and quick administration, rating scales are
69 often favoured as the main outcome measure in studies focused on new treatments for ADHD
70 (Alyagon et al., 2020; McGough et al., 2019; Paz et al., 2018; Weaver et al., 2012). However,
71 there is a relative lack of a clear understanding of the quality and adequacy of these rating
72 scales. This prevents researchers to make informed decisions when selecting which scale to
73 use and for what purpose.

74 To enhance the reader's understanding of the commonly used behavioural rating scales used
75 in the assessment of adult ADHD, we will provide a brief and non-exhaustive overview of the
76 most frequently used measures for assessing adult ADHD. These rating scales are either
77 available publicly at no cost or commercially. Among the publicly available scales, there is the
78 Wender Utah Rating Scale (WURS) which is a retrospective self-reported measure consisting
79 of 61 items that assess experienced childhood symptoms of ADHD in adults. A shorter version
80 of the WURS known as WURS-25 is also available (Ward et al., 1993). Another widely used
81 measure is the Adult ADHD Self-Report Scales (ASRS), which assesses the 18 symptoms of
82 ADHD outlined in the DSM-4 (Adler et al., 2006). In addition to the free measures previously
83 mentioned, there are also commercially available measures. To begin, Barkley Adult ADHD
84 Rating Scale (BAARS-IV) has various subscales for assessing current and childhood symptoms
85 based on DSM-5 criteria. Each scale consists of 27 items and can be administered either
86 through self-report or by an observer (Barkley, 2011). Then, there is the Brown Attention-
87 Deficit Disorder Scales (BADDS), which is a self-reported questionnaire consisting of 40 to 50
88 items divided into six subscales. It assesses symptoms associated with ADHD and executive
89 function impairments (Brown, 1996), as such impairments has been suggested to be one of
90 the underlying mechanisms of ADHD (Barkley, 1997). Lastly, the Conners' Adult ADHD Rating
91 Scales (CAARS, long version) has 66 items that assess the presence and severity of ADHD
92 symptoms through statements about daily activities and behavioural tendencies. Similarly, to
93 the BAARS-IV, the CAARS also has both self- and observer-reported versions that comprise
94 identical items.

95 Interestingly, The CAARS also includes an Inconsistency Index, which is a measure for careless
96 or random responding (Conners et al., 1999). In addition to the original Inconsistency Index,
97 researchers have developed two additional indexes for the CAARS aiming to support the
98 psychometric value of the CAARS; The first is the CAARS Infrequency Index (CII), which consists
99 of items from the CAARS that are rarely endorsed by individuals with or without ADHD. The
100 CII is useful for identifying overreporting of symptoms (J. A. Suhr et al., 2011). The second
101 Index is the Exaggeration Index (EI), which includes items from the Dissociative Experiences
102 Scale (DES) that are integrated into the CAARS. The EI measures the extent to which an
103 individual reports exaggerated or extreme symptoms of ADHD (Harrison & Armstrong, 2016).

104 In previous reviews, the CAARS was argumentatively recommended as the most useful
105 measure due to its psychometric properties (Taylor et al., 2011), its coverage of a large
106 constellation of symptoms and its ability to identify invalid symptom presentation (Marshall
107 et al., 2021), which is becoming an increasingly concerning issue. Over the last decade, studies
108 have shown that behavioural rating scales can be easily falsified (Jachimowicz & Geiselman,
109 2004; Lee Booksh et al., 2010; Quinn, 2003). This issue is compounded by the fact that some
110 individuals may feign ADHD symptoms for a variety of reasons, such as to provide a socially
111 acceptable excuse for their difficulties (J. Suhr & Wei, 2013) or to obtain benefits associated
112 with ADHD medication (Hinshaw & Scheffler, 2014). This is particularly concerning because
113 the non-specific and subjective nature of ADHD symptoms makes it easier for individuals to
114 feign symptoms during formal evaluations, which is especially prevalent among adults,
115 particularly college students. Additionally, the diagnostic criteria for adult ADHD, as
116 emphasised by the DSM-5, rely heavily on subjective symptoms rather than cognitive or
117 functional deficits. Therefore, when using behavioural rating scales to assess ADHD symptoms,
118 it is crucial to consider the possibility of feigned results. The primary objective of this paper is
119 to scrutinize the latest advancements concerning the utilisation of behavioural rating scales in
120 the evaluation of ADHD symptoms. More specifically, this review aims to provide researchers
121 with an updated and comprehensive understanding of the current state of behavioural rating
122 scales utilized in the assessment of adult ADHD, to aid them in making informed decisions
123 when selecting an appropriate scale for their research (for a comprehensive analysis of the
124 diagnostic efficacy of behavioural rating scales for clinical utility, see Harrison & Edwards,
125 2023).

126 The traditional approach to compare rating scales used for ADHD assessment is by examining
127 their psychometric properties. However, there is no agreed-upon gold standard regarding
128 which statistics are more important or how to determine when one scale is better than
129 another. In the present review, we chose to focus on evaluating the sensitivity, specificity,
130 PPV, and NPV of the rating scales. Consequently, before delving further into this review, we
131 briefly describe the fundamental statistics that we used. To begin, *sensitivity*, also referred to
132 as the true positive rate, reflects the likelihood that a test or measurement accurately
133 identifies the presence of a specific condition. To elucidate, an ADHD rating scale with a
134 sensitivity of 0.60 would correctly identify ADHD in 60% of cases. Moving on, *specificity*, known
135 as the true negative rate, signifies the probability of a test or measurement accurately
136 recognizing the absence of a particular condition. For instance, an ADHD rating scale boasting
137 a specificity of 0.30 would accurately identify the absence of ADHD in 30% of cases.
138 Transitioning to *positive predictive value* (PPV), which gauges the probability that an individual
139 possesses a condition if the test or measurement identifies them as having it. For example, an
140 ADHD rating scale with a PPV of 0.80 signifies that if the test indicates ADHD presence, there's
141 an 80% likelihood the individual indeed has ADHD. In contrast, *negative predictive value* (NPV)
142 assesses the probability that an individual lacks a given condition if the test or measurement
143 designates them as not having it. To provide an example, an ADHD rating scale with an NPV of
144 0.70 would imply a 70% probability of an individual not having ADHD if the test indicates so
145 (Ivnik et al., 2001).

146 In simpler terms, *sensitivity* measures how well a test can correctly find positive cases. On the
147 other hand, PPV looks at how likely it is that a positive test result truly means the person has
148 the condition. This way, for example, it is possible to have a test that does not catch all positive
149 cases (*low sensitivity*), but when it does yield a positive result, it is usually correct (high PPV).
150 In contrast, *specificity* measures how well the test can correctly identify those without the
151 condition (negative cases). The NPV, meanwhile, gauges how likely it is that a negative test
152 result truly means the person doesn't have the condition. Some authors argued that although
153 sensitivity and specificity are crucial in determining true positive and true negative, they fail
154 to account for the confidence level a test score can provide in either confirming or excluding
155 a diagnosis or condition. Likewise, PPV and NPV are useful in clinical decision-making because
156 they are influenced by the base rate (BR), which is the prevalence of the condition in the

157 population but do not indicate the frequency with which the test identifies the targeted
158 behaviour. Hence, it is strongly recommended to interpret all four values concurrently and use
159 qualitative descriptors to interpret their clinical usefulness (Lange & Lippa, 2017) (see Table
160 1).

161 **Table 1. Recommended qualitative descriptors for sensitivity, specificity, PPV and NPV**
162 **values as proposed by Lange & Lippa (2017).**

Value as a percentage	Qualitative descriptor
<10	Very low
10-24	Low
25-39	Low-moderate
40-59	Moderate
60-74	Moderate-high
75-89	High
90-100	Very-high

163 *Note.* PPV = positive predictive value, NPV = negative predictive value.

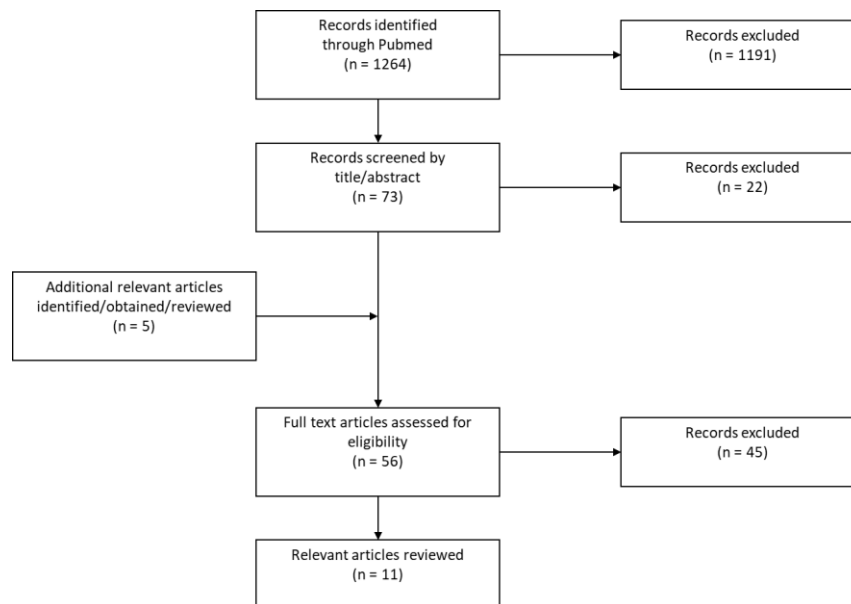
164 Although behavioural rating scales should not be relied upon solely to clinically diagnose adult
165 ADHD (Harrison & Edwards, 2023), they are often regarded as a valuable tool in research
166 settings. This is particularly notable when the objective is to measure changes in symptoms
167 during the implementation of new treatments, prioritizing symptom assessment over
168 establishing a conclusive diagnosis. This situation often prompts researchers to deliberate on
169 the most appropriate scale that aligns with their specific research objectives. This paper sets
170 out to elucidate the current status of these scales, offering in-depth insights into their
171 accuracy, the symptoms they effectively capture, and their distinct characteristics. Through
172 practical recommendations, this paper aims to empower researchers to make informed
173 decisions when selecting the most suitable scale for their research endeavours.

174 **Materials and Methods**

175 We conducted a comprehensive search in the PubMed database between 2019 and February
176 2023, using the search terms "ADHD" AND "attention deficit hyperactivity disorder" AND
177 "assessment or testing or evaluation" AND "adult" AND "diagnosis" (see Figure 1). We
178 specifically chose these terms to match those used in the most recent review of adult ADHD
179 assessment (Marshall et al., 2021) which examined the literature published between 1998 and
180 2019. Therefore, we selected 2019 as our starting point to provide an updated view of the

181 state of behavioural rating scales for adult ADHD assessment. Electronic publications were the
 182 only publications considered for inclusion in the review. In the initial search, a total of 1264
 183 abstracts of journal articles were identified, from which 73 were considered potentially
 184 relevant to adult ADHD assessment. After a further consideration of the abstracts, the full
 185 texts of 51 journal articles were reviewed, in addition to their bibliographies and citations,
 186 which led to the identification and review of an additional 5 articles. The final phase of the
 187 literature search aimed at identifying articles that met the inclusion criteria culminating in a
 188 final sample of 11 articles (see Table 2). A detailed description of the reviewed papers can be
 189 found in Appendix 1.

190 **Figure 1. Flow diagram illustrating the literature search process and article selection.**



191

192 **Table 2. Inclusion criteria**

- Published in English peer reviewed journals.	- Neuropsychological tests are standardized and have normative data.
- ADHD is diagnosed by widely used clinical or research semi-structured or structured interview.	- Results provide diagnostic accuracy statistics, at minimum sensitivity and specificity.
- Group study investigation behaviour rating scales for diagnosis, screening, or identification of ADHD.	- Participants are adults, 18 years old or older.

193

194 **Results**

195 Behavioural rating scales for the screening of ADHD

196 Two studies focused on distinguishing adults with ADHD from those without the condition,
197 while another two studies aimed to differentiate adults with ADHD from individuals diagnosed
198 with other psychiatric disorders.

199 The first study used the short version of the WURS (WURS-25) and the ASRS. They found that
200 the WURS-25 had a high level of sensitivity 90% and specificity 88% and the ASRS scale
201 demonstrated a high level of sensitivity of 80% and specificity of 88% in distinguishing
202 between adults who were seeking assessment for ADHD and healthy controls. However there
203 were no mention of PPV nor NPV (Brevik et al., 2020). The second study compared the full
204 version of the WURS with the WURS-25 and found that both versions had high sensitivity and
205 specificity values when distinguishing between control and ADHD groups. Specifically, the full
206 WURS had a sensitivity of 95%, a specificity of 93%, a PPV of 94%, and a NPV of 84%, while the
207 WURS-25 had a sensitivity of 91%, a specificity of 94%, a PPV of 88%, and an NPV of 91%.
208 When differentiating between ADHD and other psychiatric disorders, the full WURS had very
209 high specificity of 94% and NPV of 91% and high sensitivity of 84% and PPV of 88%. In contrast,
210 the WURS-25 demonstrated high specificity of 85% and NPV of 79% and moderate-to-high
211 sensitivity of 62% and PPV of 73% (Gift et al., 2021). Then, Mowlem and colleagues (2019)
212 developed the Mind Excessively Wandering Scale (MEWS) to assess the presence of mind
213 wandering in individuals ADHD. The MEWS defines mind wandering as "*periods in time in*
214 *which attention switches from a current task to unrelated thoughts and feelings*" (Smallwood
215 & Schooler, 2015). The MEWS is a self-report measure consisting of 12 or 15 items, which are
216 rated on a 4-point Likert-type scale ranging from 0 (indicating "not at all or rarely") to 3
217 (indicating "nearly all of the time or constantly"). In their study, the MEWS was found to have
218 a high level of sensitivity of 90% and specificity of 90% in the diagnosis of ADHD using sample
219 of patients with ADHD and healthy controls. The authors reported no PPV nor NPV (Mowlem
220 et al., 2019). Finally, a study was focused on the main scale of the CAARS and the t-scores,
221 which are standardised scores that compares the individual score with the reference group.
222 They found that utilizing a t-score threshold of > 65 for the identification of ADHD was
223 associated with a moderate-to-high sensitivity of 64%, a high specificity of 86%, a moderate
224 PPV of 51%, and a moderate-to-high NPV of 71%. In contrast, employing a t-score threshold

225 of > 70 yielded a low sensitivity of 14%, a very-high specificity of 92%, a moderate PPV of 47%,
226 and a moderate-to-high NPV of 68% (Harrison et al., 2019).

227 The aforementioned studies presented varying outcomes in comparison to prior research
228 conducted beyond the scope of the reviewed timeframe. For instance, Brevik et al., (2020)
229 found higher specificity (88%) for the ASRS than previously reported by other studies (ranging
230 from 27% to 68%) (Dunlop et al., 2018; Pettersson et al., 2018; Söderström et al., 2014; van
231 de Glind et al., 2013). Similarly, Gift et al., (2021) found a higher specificity for the WURS (93-
232 94%) compared to prior findings (ranging from 57% to 70%) (Luty et al., 2009; McCann et al.,
233 2000). Finally, although the specificity of the CAARS generally remained high across studies,
234 the sensitivity found by Harrison et al. (2019) (64%) was lower than previously reported (97%)
235 when the diagnosis is based on self and observer reports (Luty et al., 2009). These
236 discrepancies between the studies may then be attributed to factors such as differences in
237 sample size, addition of informant's feedback, the proportion of ADHD subtypes, or whether
238 there was a clinical group. The latter is of particular issue because clinical settings typically
239 involve patients with other psychiatric conditions, such as depression and anxiety, that are
240 known to share comorbidities with ADHD (Anker et al., 2018; Kessler et al., 2006). As a result,
241 there is a higher risk of these patients being erroneously diagnosed.

242 **Practical recommendations**

243 Our findings yielded the following results, when differentiating between healthy controls and
244 patients with ADHD, the WURS exhibited very-high sensitivity along with the WURS-25 and
245 the MEWS, whereas ASRS had high sensitivity, and the CAARS had moderate sensitivity.
246 Moreover, the WURS and the MEWS showed very-high specificity, while the WURS-25, ASRS
247 and CAARS demonstrated high specificity. The WURS also displayed very-high PPV with a high
248 NPV, whereas the CAARS exhibited moderate PPV with a moderate-to-high. Similarly, when
249 distinguishing between clinical patients and patients with ADHD, the WURS demonstrated
250 very-high sensitivity, and the WURS-25 displayed moderate-to-high sensitivity. Both the WURS
251 and WURS-25 exhibited high specificity. The WURS had a high PPV and a very-high NPV, while
252 the WURS-25 displayed moderate-to-high PPV and high NPV.

253 Overall, research to date suggest that the CAARS, the MEWS and the WURS are the measures
254 with the best statistical properties for the assessment of adult ADHD (see appendix 2).

255 Behavioural Rating scales for the detection of feign ADHD symptoms

256 A total of seven studies explored indices designed to assess the validity of ADHD symptoms
257 and the potential for feigning results.

258 To begin, two studies were focused on the validity indexes of the CAARS, which assess for the
259 detection of feigning and non-credible symptom presentation. Becke et al. (2021) created the
260 ADHD credibility index (ACI), a 12-items scale which was then compared with the CII. For the
261 detection of feigning, the ACI had a very high specificity of 98%, a low-to-moderate sensitivity
262 of 30%, and PPV and NPV ranging from 69% to 95% and 58% to 92%, respectively, varying
263 between moderate and very high. Meanwhile, the CII had a very high specificity of 95%, a
264 moderate sensitivity of 46%, and PPV and NPV ranging from 51% to 90% and 63% to 94%,
265 respectively, also varying between moderate and very high (Becke et al., 2021). The authors
266 also created the CII-ACI-Compound Index, a combination of items from both validity indexes.
267 The CII-ACI-Compound Index had a high specificity of 87% to 92%, a moderate sensitivity of
268 41% to 50%, and PPV ranging from 15% to 87% and NPV ranging from 60% to 97%, varying
269 between low-to-high and moderate-to-high and very high (Becke et al., 2022). Instead of
270 utilising embedded validity indices to detect feigning of ADHD symptoms, Courrégé and
271 colleagues (2019) developed a self-administered measure known as the ADHD Symptom
272 Infrequency Scale (ASIS). Comprising 52 true/false items, the ASIS is subdivided into two
273 scales: the ADHD scale, which includes 19 items designed to align with DSM-5 diagnostic
274 criteria, and the Infrequency scale, which includes 33 items intended to be endorsed more
275 frequently by individuals simulating ADHD than those with a genuine diagnosis. Using a sample
276 composed of patients with diagnosed ADHD and instructed simulators, the infrequency scale
277 of the ASIS demonstrated a high sensitivity of 79% to 86%, specificity of 89%, PPV of 71% to
278 79%, and a very high NPV of 92% to 93% in the detection of feigning (Courrégé et al., 2019).
279 Another study, which included a clinical control group, reported that the infrequency scale of
280 the ASIS had a very high specificity of 90%, moderate-to-high sensitivity of 71%, moderate-to-
281 high PPV of 65%, and a very high NPV of 93% for detecting feigning (Skeel et al., 2022). Another
282 recent stand-alone measure, the Multidimensional ADHD Rating Scale (MARS), was developed
283 by Potts and colleagues (2021). The MARS includes three categories of items: 18 symptom
284 items, 22 impairment items, and 4 symptom-validity items. Additionally, three "catch" items
285 are incorporated into the assessment to measure effort and attention during the

286 administration. The items are rated on a scale ranging from 0 to 8, where the symptom scale
287 ranges from 0 ("never") to 8 ("very often"), and the invalid scale ranges from 0 ("not at all") to
288 8 ("severe"). For the detection of ADHD, the MARS yielded a high sensitivity of 86% to 92%, a
289 moderate-to-high specificity of 58% to 67%, and PPV ranging from 60% to 65% and high NPV
290 of 86% to 92%. For the detection of feigning, the infrequency scale of the MARS showed a very
291 high specificity of 92%, a moderate-to-high sensitivity of 65%, very high PPV of 92%, and
292 moderate-to-high NPV of 65% (Potts et al., 2021). In another study using a similar sample, the
293 infrequency scale of the MARS and found a specificity of 88%, a moderate-to-high sensitivity
294 of 62%, and moderate-to-high PPV of 63-88% and NPV of 69-87% for the detection of feigning
295 (Potts et al., 2022). Finally, a recent study by Harrison et al. (2022) examined the validity of
296 two new indicators proposed by Aita et al. (2018) for identifying feigned ADHD using the
297 Personality Assessment Inventory (PAI). The PAI is a self-report personality measure consisting
298 of 344 items divided into four scales in which respondents are required to rate each item on
299 a four-point Likert scale ranging from 1 (indicating "false") to 4 (indicating "very true") (Morey,
300 1991). The study utilized a sample of patients with genuine ADHD and healthy controls who
301 were asked to either respond truthfully or feign ADHD. The results revealed that the Item-FAA
302 (Feigned Adult ADHD index using PAI items) had a high specificity of 78%, a moderate
303 sensitivity of 45%, a low PPV of 19%, and a very high NPV of 92%, while the Scale-FAA (Feigned
304 Adult ADHD index using PAI Scales) had a high specificity of 79%, a low-to-moderate sensitivity
305 of 36%, a low PPV of 17%, and a very high NPV of 91% for the detection of feigning (Harrison
306 et al., 2022).

307 It is noteworthy that the CAARS stands out among behavioural rating scales in that it possesses
308 validity indicators capable of detecting feigned symptoms. In addition to its initial infrequency
309 index, the CII (J. A. Suhr et al., 2011) and the EI (Harrison & Armstrong, 2016), a new index,
310 the ACI, was recently developed (Becke et al., 2021). Although the ACI had very-high
311 sensitivity, its specificity was found to be low-to-moderate. To improve its overall classification
312 accuracy, the authors of the study developed the CII-ACI-Compound, which showed a very
313 high sensitivity but only a moderate specificity (Becke et al., 2022). Although these indexes
314 show promise, further research is necessary to improve their accuracy. Additionally, they are
315 based on different theoretical foundations and may identify various subgroups of examinees
316 as non-credible (Becke et al., 2021). Conversely, as opposed to measures embedded within

317 existing rating scales, some authors have created stand-alone measures that assess ADHD
318 directly while accounting for the existence of feigned symptoms. In spite of the fact that the
319 MARS has shown promise in previous studies (Potts et al., 2021, 2022), its efficacy has not yet
320 been tested on clinical groups, which may have led to inflated results, as explained earlier. On
321 the contrary, the ASIS has exhibited good psychometric properties in its initial validation study
322 (Courrégé et al., 2019) and these findings have already been replicated with a sample of
323 patients reporting symptoms of depression and anxiety (Skeel et al., 2022).

324 **Practical recommendations**

325 In recent years, there has been a growing emphasis on developing assessment tools aimed at
326 detecting feigned symptoms. This focus arises from the recognition of the inherent
327 subjectivity and lack of specificity in the symptoms evaluated by behavioural rating scales.
328 Current research indicates that stand-alone measures like the ASIS and the MARS exhibit
329 greater accuracy compared to embedded measures. Although these stand-alone measures
330 hold considerable promise, it's crucial to acknowledge that they are still in the process of
331 refinement and development. Given this evolving landscape, we suggest utilizing the CAARS
332 in conjunction with either the CII or the EI. This recommendation is made with the
333 understanding that further research is necessary to optimize these emerging indices and
334 augment their efficacy.

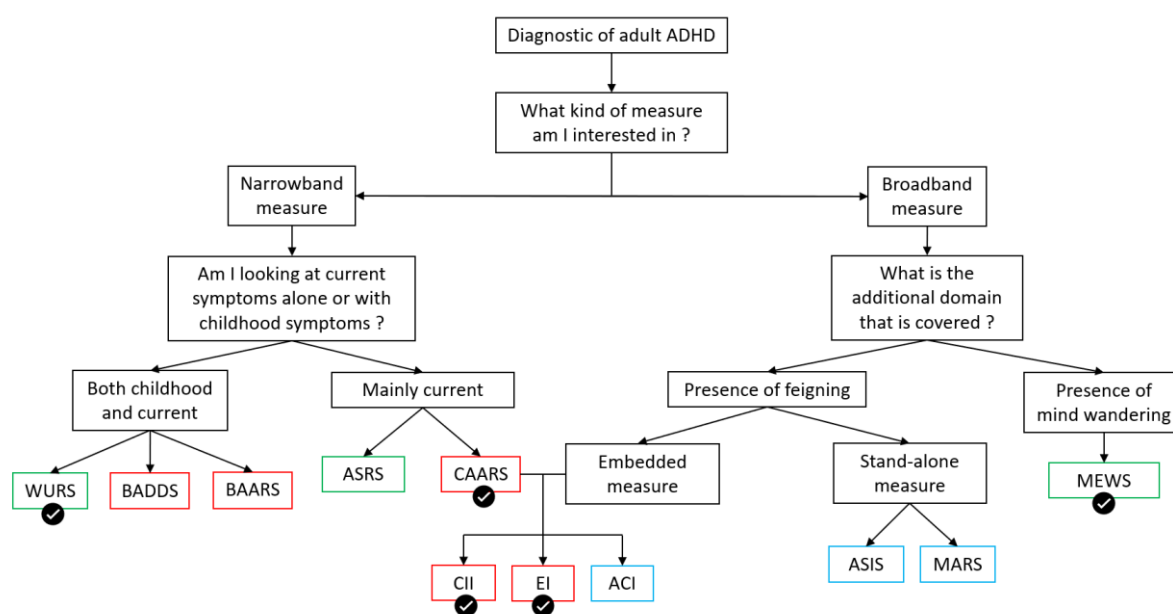
335 **Discussion**

336 **Recommendations for research settings**

337 The examination of the existing literature on the use of behavioural rating scales for adult
338 ADHD assessment revealed that they come in various forms and can evaluate different ranges
339 of symptoms (see Figure 2). For example, the WURS primarily assesses childhood symptoms,
340 whereas the CAARS assesses current symptoms and can be used to monitor symptom changes
341 over time. Therefore, we emphasize that the selection of a behavioural rating scale should be
342 based on the primary variable of interest or research objectives. Nonetheless, for a measure
343 that is suitable across a wide range of contexts, we endorse the findings of previous reviews
344 (Marshall et al., 2021; Taylor et al., 2011) and strongly recommend the utilisation of the
345 CAARS. It should be completed collaboratively by both the patient and a pertinent informant,
346 along with either the CII or the EI.

347 We propose this scale for the following compelling reasons. Firstly, the literature has identified
 348 the CAARS as one of the most accurate measures available. Secondly, the CAARS is a
 349 comprehensive tool that assesses a broad range of ADHD symptoms beyond those outlined in
 350 the DSM-5 as opposed to the WURS or the ASRS. Thirdly, the CAARS is strengthened as a
 351 standalone instrument by its inclusion of validity indicators, which not only enhance its overall
 352 utility but also assist in identifying cases where symptoms may have been inaccurately
 353 presented. Finally, as previously mentioned, the CAARS is particularly advantageous for
 354 studies assessing the efficacy of new ADHD treatments due to its ability to evaluate the current
 355 presence and severity of ADHD symptoms. Unlike the WURS, which focuses on historical
 356 symptoms, the CAARS can monitor changes in symptoms over time, allowing for a
 357 comprehensive assessment of treatment effectiveness. Although the ASIS and MARS are more
 358 effective at detecting invalid symptom presentation as well as feigning, they are still
 359 underdevelopment and requires independent validation of their effectiveness by other
 360 researchers. Accordingly, the validity indicators of the CAARS remain the most optimal choice
 361 thus far.

362 **Figure 2. Tree-graph representing behavioural rating scales used in the assessment of adult**
 363 **ADHD.**



364
 365 *Note.* The measures are highlighted in green if they are publicly available, in red if they are
 366 commercially available and in blue if they are still under development. Note that the CII and EI are in
 367 red because they rely on the utilisation of the CAARS. The validation mark emphasizes the rating scales
 368 that we recommend based on their accuracy. Narrowband measures refer to scales that focus solely
 369 on evaluating specific symptoms associated with ADHD. Broadband measures are assessing a wider
 370 range of behaviours. WURS = Wender Utah Rating Scale. ASRS = ADHD self-report scale. CAARS =

371 Conner's Adult ADHD Rating Scales. CII = CAARS Infrequency Index. ACI = ADHD Credibility Index. ASIS
372 = ADHD Symptom Infrequency Scale. BAARS-IV = Barkley Adult ADHD Rating Scale-Fourth Edition. EI =
373 Exaggeration Index. MEWS = Mind Excessively Wandering Scale. MARS = Multidimensional ADHD
374 Rating Scale.

375 Strength and limitations

376 When interpreting the findings of this review, it is important to consider both its strengths and
377 limitations. One potential limitation is that only the Medline database was searched, and the
378 search only retrieved electronic articles. As a result, there's a possibility of publication bias
379 due to the lack of other sources of information. Another constraint of this paper lies in the
380 instability observed in the base rates of PPV and NPV among the studies reviewed. The
381 variations in these base rates made it challenging to establish a meaningful direct comparison
382 between them and might have led to overestimation of their accuracy. While this paper aimed
383 to update and expand the results of Marshall et al. (2021), we decided not to control for the
384 presence of a clinical group. Therefore, some of the experiments reviewed may not accurately
385 reflect the use of rating scales in a clinical environment, where patients may present other
386 clinical diagnoses that are comorbid with ADHD. Moreover, our decision to apply inclusion
387 criteria that were more flexible than those of Marshall et al. (2021) is a distinct strength of our
388 approach. This choice not only enabled a comprehensive review of a greater number of
389 papers, but also aligned with the research-oriented nature of our focus. Certainly, we
390 recognize that researchers frequently give precedence to evaluating symptoms rather than
391 exclusively concentrating on achieving a diagnosis, as typically seen in clinical contexts.
392 Another strength is our focus on scales detecting feigned or invalid symptom presentation
393 which were often overlooked in prior reviews.

394 Conclusion

395 The objective of this paper was to provide updated insights for researchers by examining
396 recent developments in the use of behavioural rating scales to assess adult ADHD for research
397 purposes. The growing body of research on these scales has raised concerns about their
398 susceptibility to feigning, highlighting the need to consider the objectives of the ADHD
399 assessment when choosing rating scales. While standalone measures may be more
400 appropriate for research settings, combining different measures can enhance diagnostic
401 accuracy in clinical settings. To enhance the practical applicability of feigning measures,
402 further research should involve clinical groups to validate their effectiveness in settings that

403 closely reflects the clinical reality. Future studies should also systematically report sensitivity
404 and specificity along with PPV and NPV to make to facilitate their comparison with existing
405 measures.

406 Funding details.

407 The work was supported by the MRC Impact Acceleration Grant to Roi Cohen Kadosh.

408 Disclosure statement.

409 R. Mukherjee has delivered presentations for several pharmaceutical companies specializing
410 in ADHD, whereby the funds generated were specifically allocated to the neurodevelopmental
411 teams, with no direct financial compensation received by the author. The remaining authors
412 declare no conflicts of interest.

413

414 References

- 415 Adler, L. A., Spencer, T., Faraone, S. V., Kessler, R. C., Howes, M. J., Biederman, J., & Secnik, K. (2006).
416 Validity of Pilot Adult ADHD Self- Report Scale (ASRS) to Rate Adult ADHD Symptoms. *Annals*
417 *of Clinical Psychiatry*, 18(3), 145-148. <https://doi.org/10.3109/10401230600801077>
- 418 Allenby, C., Falcone, M., Bernardo, L., Wileyto, E. P., Rostain, A., Ramsay, J. R., Lerman, C., &
419 Loughead, J. (2018). Transcranial direct current brain stimulation decreases impulsivity in
420 ADHD. *Brain Stimulation*, 11(5), 974-981. <https://doi.org/10.1016/j.brs.2018.04.016>
- 421 Alyagon, U., Shahar, H., Hadar, A., Barnea-Ygael, N., Lazarovits, A., Shalev, H., & Zangen, A. (2020).
422 Alleviation of ADHD symptoms by non-invasive right prefrontal stimulation is correlated with
423 EEG activity. *NeuroImage : Clinical*, 26, 102206. <https://doi.org/10.1016/j.nicl.2020.102206>
- 424 American Psychiatric Association. (2022). *Diagnostic and Statistical Manual of Mental Disorders*. DSM
425 Library. <https://dsm.psychiatryonline.org/doi/book/10.1176/appi.books.9780890425787>
- 426 Anker, E., Bendiksen, B., & Heir, T. (2018). Comorbid psychiatric disorders in a clinical sample of
427 adults with ADHD, and associations with education, work and social characteristics : A cross-
428 sectional study. *BMJ Open*, 8(3), e019700. <https://doi.org/10.1136/bmjopen-2017-019700>
- 429 Baggio, S., Hasler, R., Giacomini, V., El-Masri, H., Weibel, S., Perroud, N., & Deiber, M.-P. (2020). Does
430 the Continuous Performance Test Predict ADHD Symptoms Severity and ADHD Presentation
431 in Adults? *Journal of Attention Disorders*, 24(6), 840-848.
432 <https://doi.org/10.1177/1087054718822060>
- 433 Barkley, R. A. (1997). Behavioral inhibition, sustained attention, and executive functions :
434 Constructing a unifying theory of ADHD. *Psychological Bulletin*, 121(1), 65-94.
435 <https://doi.org/10.1037/0033-2909.121.1.65>
- 436 Barkley, R. A. (2011). *Barkley Adult ADHD Rating Scale-IV (BAARS-IV)* (p. x, 150). The Guilford Press.
- 437 Becke, M., Tucha, L., Weisbrod, M., Aschenbrenner, S., Tucha, O., & Fuermaier, A. B. M. (2021). Non-
438 credible symptom report in the clinical evaluation of adult ADHD : Development and initial
439 validation of a new validity index embedded in the Conners' adult ADHD rating scales.

- 440 *Journal of Neural Transmission (Vienna, Austria: 1996)*, 128(7), 1045-1063.
- 441 <https://doi.org/10.1007/s00702-021-02318-y>
- 442 Becke, M., Tucha, L., Weisbrod, M., Aschenbrenner, S., Tucha, O., & Fuermaier, A. B. M. (2022). Joint
443 Consideration of Validity Indicators Embedded in Conners' Adult ADHD Rating Scales
444 (CAARS). *Psychological Injury and Law*, 15(2), 172-188. [https://doi.org/10.1007/s12207-022-](https://doi.org/10.1007/s12207-022-09445-1)
445 09445-1
- 446 Berger, I., Dakwar-Kawar, O., Grossman, E., Nahum, M., & Cohen Kadosh, R. (2021). Scaffolding the
447 Attention-Deficit/Hyperactivity Disorder Brain Using Transcranial Direct Current and Random
448 Noise Stimulation : A Randomized Controlled Trial. *Clinical Neurophysiology*.
449 <https://www.neuroscience.ox.ac.uk/publications/1152606>
- 450 Brevik, E. J., Lundervold, A. J., Haavik, J., & Posserud, M.-B. (2020). Validity and accuracy of the Adult
451 Attention-Deficit/Hyperactivity Disorder (ADHD) Self-Report Scale (ASRS) and the Wender
452 Utah Rating Scale (WURS) symptom checklists in discriminating between adults with and
453 without ADHD. *Brain and Behavior*, 10(6), e01605. <https://doi.org/10.1002/brb3.1605>
- 454 Brown, T. E. (1996). Brown attention-deficit disorder scales. *TX: Psychological Corporation*.
- 455 Conners, C. K., Erhardt, D., & Sparrow, M. A. (1999). *Conner's Adult ADHD Rating Scales (CAARS)*.
456 New York : Multihealth Systems, Inc.
- 457 Courrégé, S. C., Skeel, R. L., Feder, A. H., & Boress, K. S. (2019). The ADHD Symptom Infrequency
458 Scale (ASIS) : A novel measure designed to detect adult ADHD simulators. *Psychological*
459 *Assessment*, 31, 851-860. <https://doi.org/10.1037/pas0000706>
- 460 Dunlop, B. W., Wu, R., & Helms, K. (2018). Performance of the Adult ADHD Self-Report Scale-v1.1 in
461 Adults with Major Depressive Disorder. *Behavioral Sciences (Basel, Switzerland)*, 8(4), 37.
462 <https://doi.org/10.3390/bs8040037>
- 463 Epstein, J. N., Erkanli, A., Conners, C. K., Klaric, J., Costello, J. E., & Angold, A. (2003). Relations
464 Between Continuous Performance Test Performance Measures and ADHD Behaviors. *Journal*
465 *of Abnormal Child Psychology*, 31(5), 543-554. <https://doi.org/10.1023/A:1025405216339>

- 466 Gift, T. E., Reimherr, M. L., Marchant, B. K., Steans, T. A., & Reimherr, F. W. (2021). Wender Utah
467 Rating Scale : Psychometrics, clinical utility and implications regarding the elements of ADHD.
468 *Journal of Psychiatric Research*, 135, 181-188.
469 <https://doi.org/10.1016/j.jpsychires.2021.01.013>
- 470 Harrison, A. G., & Armstrong, I. T. (2016). Development of a symptom validity index to assist in
471 identifying ADHD symptom exaggeration or feigning. *The Clinical Neuropsychologist*, 30(2),
472 265-283. <https://doi.org/10.1080/13854046.2016.1154188>
- 473 Harrison, A. G., & Edwards, M. J. (2023). The Ability of Self-Report Methods to Accurately Diagnose
474 Attention Deficit Hyperactivity Disorder : A Systematic Review. *Journal of Attention Disorders*,
475 10870547231177470. <https://doi.org/10.1177/10870547231177470>
- 476 Harrison, A. G., Harrison, K. A., & Armstrong, I. T. (2022). Discriminating malingered attention Deficit
477 Hyperactivity Disorder from genuine symptom reporting using novel Personality Assessment
478 Inventory validity measures. *Applied Neuropsychology: Adult*, 29(1), 10-22.
479 <https://doi.org/10.1080/23279095.2019.1702043>
- 480 Harrison, A. G., Nay, S., & Armstrong, I. T. (2019). Diagnostic Accuracy of the Conners' Adult ADHD
481 Rating Scale in a Postsecondary Population. *Journal of Attention Disorders*, 23(14),
482 1829-1837. <https://doi.org/10.1177/1087054715625299>
- 483 Hinshaw, S. P., & Scheffler, R. M. (2014). *The ADHD explosion : Myths, medication, money, and*
484 *today's push for performance* (p. xxxii, 254). Oxford University Press.
- 485 Ivnik, R. J., Smith, G. E., Cerhan, J. H., Boeve, B. F., Tangalos, E. G., & Petersen, R. C. (2001).
486 Understanding the diagnostic capabilities of cognitive tests. *The Clinical Neuropsychologist*,
487 15(1), 114-124. <https://doi.org/10.1076/clin.15.1.114.1904>
- 488 Jachimowicz, G., & Geiselman, R. E. (2004). *Comparison of Ease of Falsification of Attention Deficit*
489 *Hyperactivity Disorder Diagnosis Using Standard Behavioral Rating Scales*.
- 490 Kessler, R. C., Adler, L., Ames, M., Demler, O., Faraone, S., Hiripi, E., Howes, M. J., Jin, R., Secnik, K.,
491 Spencer, T., Ustun, T. B., & Walters, E. E. (2005). The World Health Organization adult ADHD

492 self-report scale (ASRS) : A short screening scale for use in the general population.
493 *Psychological Medicine*, 35(2), 245-256. <https://doi.org/10.1017/S0033291704002892>

494 Kessler, R. C., Adler, L., Barkley, R., Biederman, J., Conners, C. K., Demler, O., Faraone, S. V., Greenhill,
495 L. L., Howes, M. J., Secnik, K., Spencer, T., Ustun, T. B., Walters, E. E., & Zaslavsky, A. M.
496 (2006). The prevalence and correlates of adult ADHD in the United States : Results from the
497 National Comorbidity Survey Replication. *The American Journal of Psychiatry*, 163(4),
498 716-723. <https://doi.org/10.1176/ajp.2006.163.4.716>

499 Lange, R. T., & Lippa, S. M. (2017). Sensitivity and specificity should never be interpreted in isolation
500 without consideration of other clinical utility metrics. *The Clinical Neuropsychologist*, 31(6-7),
501 1015-1028. <https://doi.org/10.1080/13854046.2017.1335438>

502 Lee Booksh, R., Pella, R. D., Singh, A. N., & Drew Gouvier, W. (2010). Ability of College Students to
503 Simulate ADHD on Objective Measures of Attention. *Journal of Attention Disorders*, 13(4),
504 325-338. <https://doi.org/10.1177/1087054708329927>

505 Luty, J., Rajagopal Arokiadass, S. M., Sarkhel, A., Easow, J. M., Desai, R., Moorti, O. P., & El Hindy, N.
506 (2009). Validation of self-report instruments to assess attention deficit hyperactivity disorder
507 symptoms in adults attending community drug and alcohol services. *Journal of Addiction*
508 *Medicine*, 3(3), 151-154. <https://doi.org/10.1097/ADM.0b013e31819343d0>

509 Marshall, P., Hoelzle, J., & Nikolas, M. (2021). Diagnosing Attention-Deficit/Hyperactivity Disorder
510 (ADHD) in young adults : A qualitative review of the utility of assessment measures and
511 recommendations for improving the diagnostic process. *The Clinical Neuropsychologist*,
512 35(1), 165-198. <https://doi.org/10.1080/13854046.2019.1696409>

513 McCann, B. S., Scheele, L., Ward, N., & Roy-Byrne, P. (2000). Discriminant Validity of the Wender
514 Utah Rating Scale for Attention-Deficit/Hyperactivity Disorder in Adults. *The Journal of*
515 *Neuropsychiatry and Clinical Neurosciences*, 12(2), 240-245.
516 <https://doi.org/10.1176/jnp.12.2.240>

- 517 McGough, J. J., Sturm, A., Cowen, J., Tung, K., Salgari, G. C., Leuchter, A. F., Cook, I. A., Sugar, C. A., &
518 Loo, S. K. (2019). Double-Blind, Sham-Controlled, Pilot Study of Trigeminal Nerve Stimulation
519 for Attention-Deficit/Hyperactivity Disorder. *Journal of the American Academy of Child &*
520 *Adolescent Psychiatry, 58*(4), 403-411.e3. <https://doi.org/10.1016/j.jaac.2018.11.013>
- 521 Mowlem, F. D., Skirrow, C., Reid, P., Maltezos, S., Nijjar, S. K., Merwood, A., Barker, E., Cooper, R.,
522 Kuntsi, J., & Asherson, P. (2019). Validation of the Mind Excessively Wandering Scale and the
523 Relationship of Mind Wandering to Impairment in Adult ADHD. *Journal of Attention*
524 *Disorders, 23*(6), 624-634. <https://doi.org/10.1177/1087054716651927>
- 525 Murphy, K. R., & Gordon, M. (1998). Assessment of adults with ADHD. In *Attention-deficit*
526 *hyperactivity disorder : A handbook for diagnosis and treatment, 2nd ed* (p. 345-369). The
527 Guilford Press.
- 528 Nahum, M., Dakwar-Kawar, O., Mairon, N., Hochman, S., Berger, I., & Cohen-Kadosh, R. (2023).
529 *Transcranial Random Noise Stimulation combined with Cognitive Training for Treating ADHD :*
530 *A Randomized, Sham-Controlled Clinical Trial.* <https://doi.org/10.21203/rs.3.rs-2550466/v1>
- 531 Ogundele, M. O., Ayyash, H. F., & Banerjee, S. (2011). Role of computerised continuous performance
532 task tests in ADHD. *Progress in Neurology and Psychiatry, 15*(3), 8-13.
533 <https://doi.org/10.1002/pnp.198>
- 534 Paz, Y., Friedwald, K., Levkovitz, Y., Zangen, A., Alyagon, U., Nitzan, U., Segev, A., Maoz, H., Koubi, M.,
535 & Bloch, Y. (2018). Randomised sham-controlled study of high-frequency bilateral deep
536 transcranial magnetic stimulation (dTMS) to treat adult attention hyperactive disorder
537 (ADHD) : Negative results. *The World Journal of Biological Psychiatry, 19*(7), 561-566.
538 <https://doi.org/10.1080/15622975.2017.1282170>
- 539 Pettersson, R., Söderström, S., & Nilsson, K. W. (2018). Diagnosing ADHD in Adults : An Examination
540 of the Discriminative Validity of Neuropsychological Tests and Diagnostic Assessment
541 Instruments. *Journal of Attention Disorders, 22*(11), 1019-1031.
542 <https://doi.org/10.1177/1087054715618788>

- 543 Potts, H. E., Lewandowski, L. J., & Lovett, B. J. (2021). The Multidimensional ADHD Rating Scale : A
544 measure of symptoms, impairment, and symptom validity. *Journal of Clinical and*
545 *Experimental Neuropsychology*, 43(4), 426-436.
546 <https://doi.org/10.1080/13803395.2021.1942795>
- 547 Potts, H. E., Lewandowski, L. J., & Lovett, B. J. (2022). Identifying Feigned ADHD in College Students :
548 Comparing the Multidimensional ADHD Rating Scale to Established Validity Measures.
549 *Journal of Attention Disorders*, 26(12), 1622-1630.
550 <https://doi.org/10.1177/10870547221092095>
- 551 Quinn, C. A. (2003). Detection of malingering in assessment of adult ADHD. *Archives of Clinical*
552 *Neuropsychology*, 18(4), 379-395. <https://doi.org/10.1093/arclin/18.4.379>
- 553 Ramsay, J. R. (2015). Psychological assessment of adults with ADHD. In *Attention-deficit hyperactivity*
554 *disorder : A handbook for diagnosis and treatment, 4th ed* (p. 475-500). The Guilford Press.
- 555 Riccio, C. A., & Reynolds, C. R. (2001). Continuous Performance Tests Are Sensitive to ADHD in Adults
556 but Lack Specificity. *Annals of the New York Academy of Sciences*, 931(1), 113-139.
557 <https://doi.org/10.1111/j.1749-6632.2001.tb05776.x>
- 558 Sayal, K., Prasad, V., Daley, D., Ford, T., & Coghill, D. (2018). ADHD in children and young people :
559 Prevalence, care pathways, and service provision. *The Lancet Psychiatry*, 5(2), 175-186.
560 [https://doi.org/10.1016/S2215-0366\(17\)30167-0](https://doi.org/10.1016/S2215-0366(17)30167-0)
- 561 Skeel, R. L., Lesica, S., Fust, B., Garnett, A., & Bolen, L. (2022). Validation of an adult ADHD measure of
562 feigning in a sample including individuals with depression and anxiety symptoms. *Applied*
563 *Neuropsychology: Adult*, 0(0), 1-7. <https://doi.org/10.1080/23279095.2022.2158335>
- 564 Smallwood, J., & Schooler, J. W. (2015). The Science of Mind Wandering : Empirically Navigating the
565 Stream of Consciousness. *Annual Review of Psychology*, 66(1), 487-518.
566 <https://doi.org/10.1146/annurev-psych-010814-015331>

- 567 Söderström, S., Pettersson, R., & Nilsson, K. W. (2014). Quantitative and subjective behavioural
568 aspects in the assessment of attention-deficit hyperactivity disorder (ADHD) in adults. *Nordic*
569 *Journal of Psychiatry*, 68(1), 30-37. <https://doi.org/10.3109/08039488.2012.762940>
- 570 Song, P., Zha, M., Yang, Q., Zhang, Y., Li, X., & Rudan, I. (2021). The prevalence of adult attention-
571 deficit hyperactivity disorder : A global systematic review and meta-analysis. *Journal of*
572 *Global Health*, 11, 04009. <https://doi.org/10.7189/jogh.11.04009>
- 573 Suhr, J. A., Buelow, M., & Riddle, T. (2011). Development of an infrequency index for the CAARS.
574 *Journal of Psychoeducational Assessment*, 29, 160-170.
575 <https://doi.org/10.1177/0734282910380190>
- 576 Suhr, J., & Wei, C. (2013). Symptoms as an Excuse : Attention Deficit/Hyperactivity Disorder Symptom
577 Reporting as an Excuse for Cognitive Test Performance in the Context of Evaluative Threat.
578 *Journal of Social and Clinical Psychology*, 32(7), 753-769.
579 <https://doi.org/10.1521/jscp.2013.32.7.753>
- 580 Taylor, A., Deb, S., & Unwin, G. (2011). Scales for the identification of adults with attention deficit
581 hyperactivity disorder (ADHD) : A systematic review. *Research in Developmental Disabilities*,
582 32(3), 924-938. <https://doi.org/10.1016/j.ridd.2010.12.036>
- 583 van de Glind, G., van den Brink, W., Koeter, M. W. J., Carpentier, P.-J., van Emmerik-van
584 Oortmerssen, K., Kaye, S., Skutle, A., Bu, E.-T. H., Franck, J., Konstenius, M., Moggi, F., Dom,
585 G., Verspreet, S., Demetrovics, Z., Kapitány-Fövény, M., Fatséas, M., Auriacombe, M.,
586 Schillinger, A., Seitz, A., ... Levin, F. R. (2013). Validity of the Adult ADHD Self-Report Scale
587 (ASRS) as a screener for adult ADHD in treatment seeking substance use disorder patients.
588 *Drug and Alcohol Dependence*, 132(3), 587-596.
589 <https://doi.org/10.1016/j.drugalcdep.2013.04.010>
- 590 Vaughn, A. J., Epstein, J. N., Rausch, J., Altaye, M., Langberg, J., Newcorn, J. H., Hinshaw, S. P.,
591 Hechtman, L., Arnold, L. E., Swanson, J. M., & Wigal, T. (2011). Relation Between Outcomes

592 on a Continuous Performance Test and ADHD Symptoms Over Time. *Journal of Abnormal*
593 *Child Psychology, 39*(6), 853-864. <https://doi.org/10.1007/s10802-011-9501-y>
594 Ward, M. F., Wender, P. H., & Reimherr, F. W. (1993). The Wender Utah Rating Scale : An aid in the
595 retrospective diagnosis of childhood attention deficit hyperactivity disorder. *The American*
596 *Journal of Psychiatry, 150*(6), 885-890. <https://doi.org/10.1176/ajp.150.6.885>
597 Weaver, L., Rostain, A. L., Mace, W., Akhtar, U., Moss, E., & O'Reardon, J. P. (2012). Transcranial
598 Magnetic Stimulation (TMS) in the Treatment of Attention-Deficit/Hyperactivity Disorder in
599 Adolescents and Young Adults : A Pilot Study. *The Journal of ECT, 28*(2), 98.
600 <https://doi.org/10.1097/YCT.0b013e31824532c8>
601
602

603 Note

604 The MARS and the ASIS are still underdevelopment therefore not yet publicly nor
605 commercially available. The WURS and ASRS are publicly available, the MEWS is available
606 without charge by contacting philip.asherson@kcl.ac.uk. The ASRS, the CAARS and the WURS
607 are commercially available.

608

609

610

Appendices

611 **Appendix 1. Articles providing diagnostic accuracy for behaviour rating scale used in the**
612 **assessment of adult ADHD.**

Reference	Participants	C-G	P/N	Measure	Relevant Outcome
Becke et al., 2021	1001 credible neurotypical adult controls (median age 49), 22 overreporting neurotypical adult controls (median age 32), 100 credible adults with ADHD (median age 34), 22 non-credible adults with ADHD (median age 31,5) 242 adults instructed to simulate (median age 20).	No	Yes	WURS-25, ASRS, CAARS, CII, ACI, TOMM, GET.	The CAARS-ACI index was found to be useful in distinguishing genuine patients with ADHD from simulators and symptom over report but did not detect non-credible adults diagnosed with ADHD with adequate accuracy.
Brevik et al., 2020	646 adults with ADHD (mean age 34), 908 adult controls (mean age 29)	No	No	WURS, ASRS.	Both the WURS and the ASRS exhibit high diagnostic accuracy, with the WURS showing superior discriminatory properties.
Courrégé et al., 2019	Study 1: 30 adult controls, 17 adults thinking they have ADHD, 28 adults diagnosed with ADHD, 31 adult simulators (group mean age 33) Study 2: 42 adult controls, 31 adults thinking they have ADHD, 29 adults diagnosed with ADHD, 31 adult simulators (group mean age 35). Study 3: 48 adult controls, 33 adults thinking they have ADHD, 26 adults diagnosed with ADHD, 38 adult simulators (group mean age 36).	No	Yes	ASIS, BAARS-IV	The ASIS indicated strong internal consistency and convergent validity with the BAARS-IV. Moreover, the ASIS was found to be highly sensitive and specific to malingering.
Gift et al., 2021	137 adults with ADHD (mean age 31), 230 adults with major depression or	Yes	Yes	WURS, WURS-25	The full WURS was more effective in distinguishing ADHD from MDD and

Reference	Participants	C-G	P/N	Measure	Relevant Outcome
	generalized anxiety disorder (MDD / GAD) (mean age 38), 120 adult controls (mean age 34)				GAD, compared to the WURS-25. On the other hand, the WURS-25 showed good separation of ADHD subjects from normal controls. However, the WURS performed better in differentiating ADHD patients from psychiatric controls, with higher sensitivity and specificity
Harrison et al., 2022	111 adults with ADHD (mean age 22), 66 clinical controls (mean age 23.8), 36 definite malingerers (mean age 23), 117 adults without diagnosis (mean age 23)	No	Yes	PAI, CII, EI, WMT, MSVT, TOMM, VSVT, TOVA.	The PAI algorithms proposed to identify feigned ADHD had low positive predictive value, hence they appear inadequate as symptom validity measures.
Mowlem et al., 2019	Study 1: 41 adults with ADHD (mean age 28), 47 adult controls (mean age 29). Study 2: 81 adults with ADHD (mean age 33), 30 adult controls (29)	No	No	MEWS, BRS, CAARS, ALS-SF, WFIRS-S	The MEWS has been found to be a dependable and credible tool to measure excessive mind wandering (MW) in adults diagnosed with ADHD. The study also revealed that individuals with ADHD reported substantially higher levels of MW when compared to their non-ADHD counterparts.
Skeel et al., 2022	101 adult controls, 99 adults with elevated DASS, 104 adults with diagnosed ADHD, 75 adult simulators (group mean age 42)	Yes	Yes	ASIS, BAARS-IV, DASS	The infrequency scale of the ASIS was deemed a trustworthy and effective measure for detecting ADHD feigning, even when individuals with symptoms of depression and anxiety were included in the sample.
Becke et al., 2022	856 adult controls (median age 50), 72 adults with ADHD (median age 35), 135 adult simulators (median age 39).	No	Yes	WURS-25, ASRS, CAARS, CII, ACI, TOMM, GET.	The combination of specific items from the CAARS Infrequency Index (CII) and the ADHD Credibility Index (ACI) in the CII-ACI-Compound index achieves a balance between sensitivity and specificity, but it does not

Reference	Participants	C-G	P/N	Measure	Relevant Outcome
					show significantly improved results compared to the use of the ACI alone.
Potts et al., 2021	Study 1: 39 adults with ADHD, 56 malingering adults, 62 adult controls (group mean age 19) Study 2: 49 adults with ADHD, 68 malingering adults, 70 adult controls (group mean age 18)	No	Yes	MARS	The MARS indexes could detect individuals with ADHD at high sensitivity rates but had moderate specificity with regard to non-ADHD controls. The infrequency index was effective in identifying genuine ADHD from malingered ADHD.
Potts et al., 2022	34 adults with ADHD (mean age 18), 34 malingering adults (mean age 18)	No	Yes	MARS, CAT-A, WMT	The infrequency scale of the MARS had a higher sensitivity rate of with close to optimal specificity compared to other tests for detecting feigned ADHD.
Harrison et al., 2019	507 clinical controls (mean age 22) and 249 adults with ADHD (mean age 21)	Yes	Yes	CAARS	The CAARS is reliable for screening (specificity) but not diagnosing (sensitivity). It often misidentified individuals as having ADHD when they presented other psychological conditions.

613 *Note.* C-G = Clinical Group. “Yes” was attributed if there was the presence of a clinical group. P/N =
614 predictive value. “Yes” was attributed if PPV & NVP were reported along with sensitivity and specificity.
615 WURS = Wender Utah Rating Scale. WURS-25 = Wender Utah Rating Scale, Short-form. ASRS = ADHD
616 self-report scale. CAARS = Conner’s Adult ADHD Rating Scales. CII = CAARS Infrequency Index. ACI =
617 ADHD Credibility Index. WMT = Word Memory Test. TOMM = Test of Memory Malingering, GET =
618 Groningen Effort Test. ASIS = ADHD Symptom Infrequency Scale. BAARS-IV = Barkley Adult ADHD Rating
619 Scale-Fourth Edition. PAI = Personality Assessment Inventory. EI = Exaggeration Index. MSVT = Medical
620 Symptom Validity Test. VSVT = Victoria Symptom Validity Test. TOVA = Test of Variable of Attention.
621 MEWS = Mind Excessively Wandering Scale. BRS = Barkley ADHD Rating Scale. ALF-SF = Affective
622 Liability Scale-Short Form. WFIRS-S = Weiss Functional Impairment Rating Scale-Self Report. DASS =
623 Depression Anxiety Stress Scales. MARS = Multidimensional ADHD Rating Scale. CAT-A = Clinical
624 Assessment of Attention Deficit-Adult.

625

626

627

628

629 **Appendix 2. Psychometric statistics retrieved from the studies reviewed, arranged by**
630 **measurement, and shorted by scale.**

Measurement of ADHD						
Scale	Sensitivity %	Specificity %	PPV		NPV	
			Value %	BR %	Value %	BR %
WURS-61	84-95	93-94	88-94	.	84-91	.
WURS-25	62-90	85-94	73-88	.	79-91	.
ASRS	80	88
CAARS	64	86	51	.	71	.
MARS	86-92	58-67	60-65	38-40	86-92	38-40
MEWS	90	90

Measurement of Feigning						
Scale	Sensitivity %	Specificity %	PPV		NPV	
			Value %	BR %	Value %	BR %
ACI	30	98	69-95	10-50	58-92	10-50
CII	46	95	51-90	10-50	63-94	10-50
ACI-CII	41	87	15-87	5-50	60-67	5-50
ASIS	71-79	89-90	65-71	29	92-93	29
MARS	62-65	88-92	63-92	25-50	69-87	25-50
PAI Item-FAA	45	78	19	19	92	19
PAI Scale-FAA	36	79	17	19	91	19

631 *Note.* PPV = Positive predictive value. NPV = Negative predictive value. BR = base rate. WURS-61 =
632 Wender Utah Rating Scale, Long form. WURS-25 = Wender Utah Rating Scale, Short-form. ASRS = ADHD
633 self-report scale. CAARS = Conner’s Adult ADHD Rating Scales. MARS = Multidimensional ADHD Rating
634 Scale. MEWS = Mind Excessively Wandering Scale. ACI = ADHD Credibility Index. CII = CAARS
635 Infrequency Index. ACI-CII = ACI-CII Compound index. ASIS = ADHD Symptom Infrequency Scale. PAI:
636 Personality Assessment Inventory; Item-FAA: Feigned Adult ADHD index using PAI items; Scale-FAA:
637 Feigned Adult ADHD index using PAI Scales.

638