

1 Child Anemia in Cambodia: A Descriptive Analysis of Temporal and Geospatial Trends and Logistic  
2 Regression-Based Examination of Factors Associated with Anemia in Children

3  
4 Samnang Um<sup>1\*</sup>, Michael R. Cope<sup>2</sup>, and Jonathan A. Muir<sup>3</sup>

5  
6 **1** The National Institute of Public Health, Tuol Kork District, Phnom Penh, Cambodia, **2** Department of Sociology,  
7 Brigham Young University, Provo, Utah, United States, **3** The Global Health Institute, Emory University, Atlanta,  
8 Georgia, United States

9  
10 [\\*umsam nang56@gmail.com](mailto:umsam nang56@gmail.com)

11 **Abstract**

12  
13 Anemia in children remains a public health concern in many resource-limited countries. To  
14 better understand child anemia in Cambodia, we examined temporal and geospatial trends of  
15 childhood anemia and used logistic regression to analyze its association with individual and  
16 household characteristics using data from the Cambodia Demographic and Health Surveys for  
17 2005, 2010, and 2014. The prevalence of childhood anemia decreased from 62.2% in 2005 to  
18 56.6% in 2014. The prevalence of childhood anemia was highest in Pursat (84.3%) for 2005,  
19 Kampong Thom (67%) for 2010, and Preah Vihear and Steung Treng (68.6%) for 2014. After  
20 adjusting for other variables, factors positively associated with childhood anemia included  
21 having a mother who was anemic (adjusted odds ratio (AOR) =1.77, 95% CI: 1.58 - 1.97); being  
22 male vs. female (AOR=1.20, 95% CI: 1.07 - 1.33), underweight (AOR=1.24, 95% CI: 1.14 -  
23 1.57), or stunted (AOR=1.24, 95% CI: 1.09 - 1.41); or having had a recent episode of fever  
24 (AOR=1.16, 95% CI: 1.03 - 1.31). Children were less likely to have anemia if they were older  
25 than 12 months. They were also less likely to have anemia if they were from a wealthier  
26 household (AOR=0.64; 95% CI: 0.50 - 0.84) or had taken medications for intestinal parasites (AOR  
27 = 0.86; 95% CI: 0.89-0.93). These associations were generally consistent across time and space.  
28 Public health interventions and policies to alleviate anemia should be prioritized to address these  
29 factors across geospatial divides. Anemia remains highly prevalent among children aged 6-59  
30 months in Cambodia.

31  
32 **Keywords:** anemia prevalence, children, trends and determinants, Cambodia

39

40

## 41 **Introduction**

42 Anemia is a serious public health problem worldwide [1]. According to World Health  
43 Organization (WHO) criteria, children aged 6-59 months are considered anemic if their  
44 hemoglobin level is below 11.0 grams per liter (g/dL), adjusted for altitude and smoking [2].

45 Anemia in children is a major cause of adverse health consequences such as stunted growth,  
46 impaired cognitive development, compromised immunity, disability and increased risk of  
47 morbidity and mortality [3]. Globally, anemia affected 40% (269 million) of children aged 6-59

48 months in 2019 [1]. About 43% of all children in low-income and middle-income countries were  
49 diagnosed with anemia in 2019 [1]. Moreover, a higher prevalence of anemia has occurred in the  
50 South Asian region, with 52% (87 million) of children presenting with anemia in 2019 [1]. An

51 estimated 145,073 children die annually worldwide due to iron deficiency from anemia [4].  
52 Similar to many low-income and middle-income nations, anemia is a serious public health  
53 problem; among children aged 6-59 months in Cambodia, the proportion of those with anemia  
54 slightly decreased from 55.2% to 49% between 2014, and 2019, respectively [5].

55

56 Anemia has significant consequences for human health, as well as for social and economic  
57 development. Previous studies found that children with very severe anemia were 4.3 times more  
58 likely to die compared to children without anemia [6]. The causes of anemia in developing

59 countries are typically grouped into three broad categories: nutritional deficiencies, infectious  
60 diseases, and genetic hemoglobin disorders [7]. In many low- and middle-income economies, the  
61 prevalence of anemia varies by socioeconomic factors such as maternal education, household

62 wealth status, maternal employment, and residence [8-12]. Some studies have demonstrated  
63 evidence of anemia associated with child age and sex [10,11,13]. Moreover, children who had  
64 experienced fever, recent diarrhea had a higher likelihood of having anemia [14,15]. Several

65 studies found maternal anemia increased the odds of having anemia among children [14-16].  
66 Evidence from an analysis of nationally representative DHS data of 47 countries showed that in  
67 over 60% of countries, children with off-premises water access had significantly increased odds  
68 of anemia; children exposed to surface water had higher odds of anemia in over a quarter of  
69 countries [17].

70  
71 The prevalence of anemia in Cambodia has slowly decreased in children aged under five years  
72 during 2014-2019 [5]. To further reduce rates of anemia in Cambodia, an improved  
73 understanding of its geographical distribution and associated risk factors is required. An  
74 enhanced understanding will help identify populations at greater risk for anemia and prioritize  
75 geographic areas for targeted interventions. To our knowledge, there are no published peer-  
76 reviewed studies that assess social and demographic factors associated with anemia among  
77 children aged 6-59 months in Cambodia over time. One prior study on anemia patterns and risk  
78 factors utilized data from CDHS 2014 [15]. This study included all children aged 6-59 months  
79 and pooled DHS data in South and Southeast Asian countries. An additional study aimed to  
80 describe trends in the nutritional status of children under age five in Cambodia based on four  
81 CDHS surveys taken from 2000 to 2014 to assess the effect of inequality (child's age, child's  
82 sex, mother's education, place of residence and wealth index) on nutrition [18]. Given the  
83 paucity of scholarship addressing this health concern among Cambodian children aged 6-59  
84 months, in this study, we aimed to assess temporal and geospatial trends of anemia among  
85 children aged 6-59 months in Cambodia and examine factors associated with anemia among  
86 children aged 6-59 months in Cambodia. Understanding these factors may further support policy  
87 development and programs with more effective strategies and interventions in Cambodia to  
88 reduce the prevalence of anemia and associated health risks such as infant and child mortality  
89 among children aged 6-59 months.

90

91

92

## 93 **Materials and methods**

### 94 **Ethics Statement**

95 The original CDHS protocol was approved by the National Ethical Committee for Health  
96 Research, Ministry of Health of the Cambodia (Ref: 056 NECHR) and the Institutional Review  
97 Board (IRB) of ICF in Rockville, Maryland, USA. Moreover, for the protection of using the  
98 secondary data in this study, the research proposal was reviewed and provided ethical approval  
99 (Ref: 225 NECHR) by the National Ethics Committee for Health Research, Ministry of Health of  
100 the Cambodia [19]. CDHS data are publicly accessible upon request through the DHS website at  
101 (<https://dhsprogram.com/data/available-datasets.cfm>) [20]. Details of the questionnaires,  
102 procedures, and data collection methods can be found elsewhere and through the DHS website  
103 [21-23]. Interviewers explained the objective of the survey to parents/guardians of each  
104 participant under 18 years of age, and written informed consent was obtained from  
105 parents/guardians before data collection. The study contains no individual identifiers that could  
106 affect the confidentiality of the participants, and the data were used for analysis purposes only.

107

### 108 **Data sources and procedures**

109 We used existing children's data from the 2005, 2010, and 2014 CDHS. The CDHS is a  
110 nationally representative population-based household survey that is regularly conducted roughly  
111 every 5 years. The survey typically uses two-stage stratified cluster sampling to collect samples  
112 from all of the Cambodian provinces, which have been divided into sampling domains. In the  
113 first stage, clusters, or enumeration areas (EAs), that represent the entire country are randomly  
114 selected from the sampling frame using estimates of probability proportional to cluster size

115 (PPS). The second stage then involves the systematic sampling of households listed in each  
116 cluster or EA. Details of CDHS survey reported have been described elsewhere [21-23].

117  
118 Data about the maternal and children demographic, their behaviors, their access to health care,  
119 and their household characteristics, as well as the health status of children, were collected when  
120 the enumerators identified children in the selected households. Anemia testing was performed on  
121 women and men aged 15-49, as well as children aged 6-11 months when parents or caretakers  
122 consented to the test. Blood samples were drawn using a finger prick or a heel prick in the case  
123 of women and men aged 15-49 and children aged 6-59 months [24]. Hemoglobin analysis was  
124 done on site using a battery-operated portable HemoCue 201+analyzer, adjusted for altitude and  
125 smoking [24]. HemoCue 201+analyzer was recommended as the gold standard device for venous  
126 blood measurements and have noted its great predictability (98.7%) [25] and sensitivity (93%)  
127 [26]. From the total of 23,687 children who were under five years old, 19,646 were of 6-59  
128 months of age. Data on the children's hemoglobin level were available; ultimately, data for  
129 10,434 children 6-59 months were included in the final analysis (see Fig 1).

130

131 **Fig 1.** Selection process and the final sample size from the 2005, 2010, and 2014 CDHS

132

### 133 **Measures**

134 Anemia status among children aged 6-59 months was the outcome variable. The original variable  
135 for anemia level in the CHDS was recorded as a categorical variable representing “hemoglobin  
136 level of 11.0 g/dL is defined as not anemic,” “10.0-10.9 g/dL is mild anemia,” “7.0-9.9 g/dL is  
137 moderate anemia,” and “less than 7.0 g/dL is severe anemia” based on the WHO hemoglobin  
138 level cut-off points [2]. Then, the original variable was recoded into the binary variable Anemia,  
139 with mild, moderate, and severe anemia coded as Anemic = 1 and non-Anemic = 0.

140

141 Right-hand sided variables included individual-level (maternal and child) and household-level  
142 characteristics. **Maternal characteristics** included age (coded as 1 = 15-24 (reference), 2 = 25-  
143 34, and 3= 35-49 years); education (coded as 0 = no education (reference), 1 = primary, and 2=  
144 secondary or above); marital status (coded as 0 = not married which included separated,  
145 divorced, and widowed, and 1 = married, which included married and cohabitating);  
146 employment(coded as 0 = not working (reference), 1 = working which included self-employed,  
147 professional, clerical, technical, managerial, sales, and services; skilled and unskilled manual  
148 work; maternal anemia (0 = non anemic and 1 = anemic); and smoking (coded as 0 = non-  
149 smoker and 1 = smoker).

150

151 **Child's characteristics** included sex (coded as 0 = female and 1= male); age (coded as 1= 6-11  
152 (reference), 2 = 12-23, 3 = 24-35, 4 = 36-47, and 5 = 48-59 months); birth order (coded as 1 = 1-  
153 3 (reference), 2 = 4-5 and 3 = 6 or more); place of birth (coded as 1 = hospital (reference) which  
154 included public and private, 3 = home); stunting (coded as 0 = not stunted and 1 = stunted);  
155 underweight (coded as 0 = not underweight and 1 = underweight); and wasting (coded as 0 = not  
156 wasted and 1 = wasted); recent fever in past two weeks (coded as 0 = no and 1 = yes), recent  
157 diarrhea in past two weeks (coded as 0 = no and 1 = yes); Vitamin A supplementation within the  
158 last 6 months (coded as 0 = no and 1 = yes); intestinal parasite medication within the last 6  
159 months (coded as 0 = no and 1 = yes); and Iron supplementation within the last 6 months (coded  
160 as 0 = no and 1 = yes).

161

162 **Household characteristics** included the DHS wealth index, coded as an ordinal level variable  
163 with richest =1 (reference), richer = 2, middle = 3, poorer = 4, and poorest = 5 (we opted to use  
164 the wealth index that was provided by each respective survey year of the CDHS as opposed to

165 calculating a wealth index across the pooled data. This decision was based on prior research that  
166 found wealth status designation was comparable across the CDHS provided indices and an index  
167 based on data pooled across years) [23]; source of drinking water (coded as 1 = unimproved and  
168 0 = improved), type of toilet (coded as 1 = unimproved and 0 = improved; and residence (coded  
169 as 1 = urban and 2 = rural). Cambodia's domains/provinces were regrouped for analytic purposes  
170 into a categorical variable with 4 geographical regions that were coded as plains = 1 (reference),  
171 Tonle Sap = 2, coastal/sea = 3, and mountains = 4 (Plains included Phnom Penh, Kampong  
172 Cham/Tbong Khmum, Kandal, Prey Veng, Svay Rieng, and Takeo; Tonle Sap included Banteay  
173 Meanchey, Kampong Chhnang, Kampong Thom, Pursat, Siem Reap, Battambang, Pailin, and  
174 Otdar Meanchey; Coastal/sea included Kampot, Kep, Preah Sihanouk, and Koh Kong; and  
175 Mountains included Kampong Speu, Kratie, Preah Vihear, Stung Treng, Mondul Kiri, and  
176 Ratanak Kiri). Survey year was coded as 1 = 2005 (reference), 2 = 2010, and 3 = 2014.

177

### 178 **Analytic strategy**

179 Statistical analyses were performed using STATA version 17 (Stata Corp 2019, College Station,  
180 TX) [27]. We formally incorporated the DHS's complex sample design using the "survey"  
181 package; all estimations were carried out using the `svy` command in our descriptive and logistic  
182 regression analyses. Key maternal, child and household characteristics were described using  
183 weighted frequency distributions for specific survey years and for all years pooled together. A  
184 temporal series of maps illustrating provincial variations in the prevalence of anemia over time  
185 were created using ArcGIS software version 10.8 [28]. The underlying shapefiles of Cambodia  
186 provinces were obtained from the publicly accessible Spatial Data Repository associated with the  
187 DHS website (<https://spatialdata.dhsprogram.com/boundaries/#view=table&countryId=KH>)  
188 [29]. Data quality assurance and minor data cleaning followed standard procedures in  
189 preparation for statistical analysis [30].

190  
191 Cross-tabular weighted frequency distributions with Chi-square tests were used to assess the  
192 association between the variables of interest (including maternal, child household characteristics)  
193 and anemia status. Variables associated with anemia status with a p-value  $\leq 0.05$  were used in  
194 the multivariate logistic regression analysis [31]. Women's age, residence, and survey years were  
195 included in the multivariate regression based on the literature and prior knowledge. Unadjusted  
196 logistic regression was used to analyze associations between anemia and maternal bio-  
197 demographic and household characteristics, geographical regions, and health-related factors.  
198 Results are reported as odds ratios (OR) with 95% confidence intervals (CI). Adjusted logistic  
199 regression was then used to assess factors associated with anemia after adjusting for other  
200 variables in the model. Results from the final adjusted model are reported as adjusted odds ratios  
201 (AOR) with 95% confidence intervals and corresponding p-values. Results from the final  
202 adjusted logistic regression model were considered statistically significant based on a p-value  
203 less than 0.05 and 95% confidence intervals that did not cross an AOR of 1.0. Potential multi-  
204 collinearity between right-hand sided variables was checked using a continuous version of the  
205 outcome variable and evaluating VIF scores after fitting an Ordinary Least Squares regression  
206 model (**S1-table**).

207  
208 **Results**  
209 A total of 10,294 children aged 6-59 months were included in the pooled data, there were 2,933  
210 in 2005, 3,407 in 2010, and 3,955 in 2014, respectively. Overall, 49.2% of children were female,  
211 23% had a mother who had at least completed secondary education, 46.5% had a mother who  
212 was anemic, 3.7% had a mother who smoked, 86% resided in rural areas, and 26% belonged to  
213 the poorest households (**Table 1**). The overall prevalence of anemia among children decreased  
214 slightly from 62.2% in 2005 to 56.6% in 2014 (**Fig 2**). The extent of this downward trend varied



215 across the four geographical regions; the highest prevalence of anemia in the Tonle Sap region in  
 216 2005 (69.5%). The coastal region had the lowest prevalence of anemia across all survey years,  
 217 with prevalence levels in 2005 that were lower than the prevalence levels of other regions in  
 218 2014 (**Fig 1**). Anemia was highest among children in Pursat (84.3%), in Kampong Thom  
 219 province (67%), and in Preah Vihear and Steung Treng (68.6%) for 2005, 2010 and 2014,  
 220 respectively (**Fig 3, S2-Table**). While the lowest prevalence of anemia among children was  
 221 observed in Kampot and Kep provinces (48.3%), in Pursat (39.7%), and in Phnom Penh (41.3%)  
 222 for 2005, 2010 and 2014.

223

224 **Table 1.** Descriptive Statistics of Individual and Household Socio-demographic Characteristics

Variables	2005 (n=2,933)		2010 (n=3,407)		2014 (n=3,955)		2005-2014 (n=10,294)	
	Freq.	%	Freq.	%	Freq.	%	Freq.	%
<b>Maternal Characteristics</b>								
<b>Age (years)</b>								
15-20	127	4.3	170	5.0	210	5.3	507	4.9
20-34	1,962	66.9	2,529	74.2	3,097	78.3	7,587	73.7
35-49	844	28.8	708	20.8	648	16.4	2,200	21.4
<b>Education</b>								
No education	719	24.5	649	19.0	537	13.6	1,905	18.5
Primary	1,730	59.0	1,944	57.1	2,191	55.4	5,865	57.0
Secondary plus	484	16.5	814	23.9	1,226	31.0	2,365	23.0
<b>Marital status</b>								
Ever married	132	4.5	155	4.5	179	4.5	466	4.5
Married	2,801	95.5	3,252	95.5	3,775	95.4	9,828	95.5
<b>Employment</b>								
Not working	19	0.6	523	15.4	988	25.0	1,530	14.9
Working	2,914	99.4	2,884	84.6	2,966	75.0	8,764	85.1
<b>Anemia status</b>								
Non anemic	1,438	49.0	1,898	55.7	2,151	54.4	5,488	53.3
Anemic	1,495	51.0	1,509	44.3	1,783	45.1	4,787	46.5
<b>Smoking</b>								
No-smoker	2,767	94.3	3,300	96.9	3,842	97.1	9,908	96.3
Smoker	166	5.7	107	3.1	113	2.9	386	3.7
<b>Child Characteristics</b>								
<b>Place of birth</b>								
Hospital	565	19.3	1,736	51.0	3,300	83.4	5,601	54.4
Home	2,368	80.7	1,671	49.0	655	16.6	4,693	45.6
<b>Age</b>								
6-11	324	11.0	409	12.0	455	11.5	1,188	11.5
12-23	696	23.7	786	23.1	959	24.2	2,440	23.7
24-35	620	21.1	763	22.4	874	22.1	2,257	21.9
36-47	673	22.9	710	20.8	852	21.5	2,236	21.7

48-59	621	21.2	739	21.7	815	20.6	2,174	21.1
<b>Sex</b>								
Female	1,485	50.6	1,632	47.9	1,943	49.1	5,060	49.2
Male	1,448	49.4	1,775	52.1	2,011	50.8	5,234	50.8
<b>Birth order</b>								
1-2	1,903	64.9	2,638	77.4	3,345	84.6	7,887	76.6
3-5	610	20.8	502	14.7	439	11.1	1,551	15.1
6+	420	14.3	267	7.8	171	4.3	857	8.3
<b>Stunted</b>								
Not stunted	1,555	53.0	1,945	57.1	2,575	65.1	6,075	59.0
Stunted	1,305	44.5	1,387	40.7	1,311	33.1	4,003	38.9
<b>Wasted</b>								
Not wasted	2,629	89.6	2,970	87.2	3,518	89.0	9,117	88.6
Wasted	232	7.9	362	10.6	368	9.3	961	9.3
<b>Underweight</b>								
Not Underweight	1,997	68.1	2,366	69.4	2,892	73.1	7,256	70.5
Underweight	863	29.4	965	28.3	994	25.1	2,822	27.4
<b>Recent fever</b>								
No	1,860	63.4	2,383	69.9	2,774	70.1	7,017	68.2
Yes	1,073	36.6	1,024	30.1	1,180	29.8	3,277	31.8
<b>Recent diarrhea</b>								
No	2,357	80.4	2,856	83.8	3,413	86.3	8,626	83.8
Yes	576	19.6	551	16.2	541	13.7	1,668	16.2
<b>Vitamin A supplement</b>								
No	1,925	65.6	1,041	30.6	1,226	31.0	4,193	40.7
Yes	1,008	34.4	2,366	69.4	2,729	69.0	6,102	59.3
<b>Iron supplement</b>								
No	2,901	98.9	3,352	98.4	3,711	93.8	9,964	96.8
Yes	32	1.1	55	1.6	244	6.2	331	3.2
<b>Parasite medication</b>								
No	2,155	73.5	1,438	42.2	1,586	40.1	5,180	50.3
Yes	778	26.5	1,969	57.8	2,363	59.7	5,109	49.6
<b>Household Characteristics</b>								
<b>Place of residence</b>								
Urban	380	13.0	523	15.4	545	13.8	1,448	14.1
Rural	2,553	87.0	2,884	84.6	3,409	86.2	8,846	85.9
<b>Wealth index</b>								
Poorest	763	26.0	895	26.3	1,011	25.6	2,669	25.9
Poorer	668	22.8	708	20.8	792	20.0	2,168	21.1
Middle	551	18.8	639	18.8	764	19.3	1,955	19.0
Richer	482	16.4	605	17.8	670	16.9	1,757	17.1
Richest	469	16.0	560	16.4	717	18.1	1,746	17.0
<b>Source of drinking water</b>								
Improved	1,537	52.4	1,839	54.0	2,006	50.7	5,381	52.3
Unimproved	1,396	47.6	1,568	46.0	1,949	49.3	4,913	47.7
<b>Type of toilet facility</b>								
Improved	573	19.5	1,177	34.5	1,934	48.9	3,684	35.8
Non-Improved	2,360	80.5	2,230	65.5	2,021	51.1	6,610	64.2
<b>Region</b>								
Plain	1,326	45.2	1,655	48.6	1,770	44.8	4,751	46.2
Tonle Sap	998	34.0	1,066	31.3	1,264	32.0	3,328	32.3
Coastal	215	7.3	210	6.2	236	6.0	661	6.4
Plateau/Mountain	395	13.5	476	14.0	685	17.3	1,556	15.1

225 Notes: Data Source: CDHS 2005, 2020, and 2014. Survey weights applied to obtain weighted percentages across  
226 survey years and pooled data.

227  
228  
229

230 **Fig 2.** Overall and regional trends of anemia among children age 6-59 months by survey year.

231 Notes: Data Source: CDHS 2005, 2020, and 2014. Survey weights applied to obtain weighted  
232 percentages across survey years and pooled data.

233  
234

235  
236

237 **Fig 3.** Geographical distribution of anemia among children 6-59 months. Shapefiles for  
238 administrative boundaries in Cambodia are publicly accessible through DHS website at  
239 (<https://spatialdata.dhsprogram.com/boundaries/#view=table&countryId=KH>). Notes: Survey  
240 weights applied to obtain weighted percentages across survey years and pooled data.

241

242 Preliminary analyses included evaluation of cross-tabular frequency distributions combined with

243 Chi-square tests (see **Table 2**). Maternal age was significantly associated with the risk of anemia

244 in children in survey years 2010, and 2014; the largest percentage of children with anemia were

245 those with younger mothers aged less than 19 years (71.3% in 2005, 71.4% in 2010, and 71.6%

246 in 2014). Maternal educational attainment was significantly associated with anemia in children in

247 all survey years; the largest percentage of children with anemia were generally those whose

248 mothers had no formal education (68.5% in 2005, 58.3% in 2010, and 57.2% in 2014). Maternal

249 anemia was also significantly associated with anemia in children; the prevalence of anemia

250 among children who had anemic mothers was 69% in 2005, 63.1% in 2010, and 64% in 2010.

251

252 Anemia was related to children's ages, with a higher prevalence in the age group of 6 to 11

253 months (6-11 months: 84.3% in 2005, 83.3% in 2010, and 80.6% in 2014; 12-23 months: 79.1%,

254 77.1%, and 73.7%, respectively). In addition, anemia among male children was higher than

255 female children: 64.4% in 2005, 58% in 2010, and 58.1% in 2014. Stunted child had higher

256 prevalence of anemia (65.3% in 2005, 57.2% in 2010 and 61.5% in 2014) as did children who

257 were underweight (65% in 2005, 60% in 2010, and 61.3% in 2014). Having had fever or diarrhea

258 in the last 2 weeks was associated with anemia among children in all of the survey years; among  
259 children with a history of fever, 67.2% in 2005, 61.1% in 2010, and 62.4% in 2014 were anemic;  
260 among children with diarrhea, 70.4% in 2005, 68.8% in 2010, and 66.4% in 2014 were anemic,  
261 respectively. Deworming for intestinal parasites was also associated with anemia in children.  
262 Results show that among children who had taken drugs for intestinal parasites in the last 6  
263 months, 55.3% in 2005, 52.1% in 2010, and 51.7% in 2014 were anemic. The proportion of  
264 anemic children in rural areas was higher than in urban areas in all three years, at 62.5% in 2005,  
265 58% in 2010, and 59% in 2014. Anemia was also associated with household toilet facility; across  
266 the survey years, 64.5% in 2005, 58.5% in 2010 and 62.5% in 2014 of children in households  
267 that reported having no toilet facility were anemic. The proportion of children with anemia was  
268 highest among children in the poorest households across all the survey years: 69.4% in 2005,  
269 60.4% in 2010 and 65% in 2014 were anemic, respectively.

270  
271 After adjusting for other individual or household-level characteristics (see Table 3), children  
272 aged 6-59 months in Cambodia were more likely to have anemia if their mothers were likewise  
273 anemic (AOR=1.77, 95% CI: 1.58 - 1.97) compared with children of non-anemic mothers; if  
274 they were male compared to female (AOR=1.20, 95% CI: 1.07 - 1.33); underweight (95% CI:  
275 1.14 - 1.57) or stunted (95% CI: 1.09 - 1.41) compared to children who were not underweight or  
276 stunted; if they had recently experienced a fever (AOR=1.16, 95% CI: 1.03 - 1.31) or a bout of  
277 diarrhea (AOR=1.16, 95% CI: 0.97 - 1.38) compared to children who had not recently  
278 experienced a fever or diarrhea; or if they were residing in rural areas (AOR=1.10, 95% CI: 0.92  
279 - 1.31) compared to children residing in urban areas. Children were less likely to have anemia if  
280 they were older, came from a wealthier household, or had medications for intestinal parasites in  
281 the last 6 months. With respect to age, children aged 12-23 months (AOR=0.68; 95% CI: 0.55 -  
282 0.86), 24-35 months (AOR=0.21; 95% CI: 0.17 - 0.26), 36-47 months (AOR=0.17; 95% CI: 0.13

283 - 0.21) and 48-59 months (AOR=0.15; 95% CI: 0.12 - 0.19) were less likely to be anemic than  
284 those aged 6-11 months. Children from the wealthiest households had lower odds of being  
285 anemic compared with those in the poorest households (AOR=0.66; 95% CI: 0.50 - 0.86). The  
286 odds of being anemic were lower by 14% (AOR = 0.86; 95% CI: 0.89-0.93) among children who  
287 took medications for intestinal parasites compared to those who did not take similar medications.

**Table 2.** Chi-square test results for associations between child anemia and child, maternal, and household characteristics

Variables	2005 (n=2,933)			2010 (n=3,407)			2014 (n=3,955)			2005-2014 (n=10,294)		
	Not Anemic	Anemic	p-value	Not Anemic	Anemic	p-value	Not Anemic	Anemic	p-value	Not Anemic	Anemic	p-value
<b>Maternal Characteristics</b>												
<b>Age (years)</b>												
15-20	28.7	71.3	0.241	28.6	71.4	<0.001	28.2	71.8	0.002	28.4	71.6	<0.001
20-34	38.3	61.7		44.0	56.0		43.9	56.1		42.5	57.5	
35-49	38.0	62.0		48.7	51.3		46.1	53.9		43.8	56.2	
<b>Education</b>												
No education	31.5	68.5	<0.001	41.7	58.3	<0.001	42.8	57.2	<0.001	38.2	61.8	<0.001
Primary	37.7	62.3		43.4	56.6		41.1	58.9		40.8	59.2	
Secondary plus	47.6	52.4		48.0	52.0		47.9	52.1		47.9	52.5	
<b>Marital status</b>												
Ever married	42.7	57.3	0.294	38.2	61.8	0.201	48.6	51.4	0.239	43.5	56.5	0.592
Married	37.6	62.4		44.5	55.5		43.2	56.8		42.0	58.0	
<b>Employment</b>												
Not working	31.9	68.1	0.611	44.4	55.6	0.933	40.3	59.7	<0.109	41.6	58.4	0.762
Working	37.8	62.2		44.1	55.9		44.5	55.5		42.2	57.8	
<b>Anemia status</b>												
Non anemic	44.8	55.2	<0.001	36.9	50.0	<0.001	49.6	50.4	<0.001	48.4	51.6	<0.001
Anemic	31.1	68.9		50.0	63.1		36.0	64.0		34.8	65.2	
<b>Smoking</b>												
No-smoker	38.1	61.9	0.266	44.5	55.5	0.102	43.8	56.2	0.011	42.5	57.5	<0.001
Smoker	33.2	66.8		33.9	66.1		29.9	70.1		32.4	67.6	
<b>Child Characteristics</b>												
<b>Place of birth</b>												
Hospital	40.9	59.1	0.196	43.8	56.2	0.766	44.1	59.9	0.087	43.7	56.3	0.005
Home	37.1	62.9		44.5	55.5		40.1	59.9		40.1	59.9	
<b>Age</b>												
6-11	15.7	84.3	<0.001	16.7	83.3	<0.001	19.4	80.6	<0.001	17.5	82.5	<0.001
12-23	20.9	79.1		22.9	77.1		26.3	73.7		23.7	76.3	
24-35	42.3	57.7		54.3	45.7		49.4	50.6		49.1	50.9	
36-47	48.7	51.3		58.1	41.9		54.1	45.9		53.8	46.2	
48-59	51.9	48.1		58.2	41.8		59.5	40.5		56.9	43.1	
<b>Sex</b>												
Female	39.9	60.1	0.063	42.1	53.5	0.039	45.1	54.9	0.099	44.0	56.0	0.002
Male	35.6	64.4		46.5	57.9		41.9	58.1		40.2	59.8	
<b>Birth order</b>												
1-2	39.0	61.0	0.240	44.5	55.5	0.717	43.9	56.1	0.435	42.9	57.1	0.040
3-5	36.8	63.2		42.0	58.0		41.5	58.5		39.8	60.2	
6+	33.8	66.2		45.2	54.8		38.9	61.1		38.3	61.7	
<b>Stunted</b>												
Not stunted	40.6	59.4	0.008	44.8	55.2	0.368	46.0	54.0	<0.001	44.3	55.7	<0.001
Stunted	34.7	65.3		42.8	57.2		38.5	61.5		38.8	61.2	
<b>Wasted</b>												
Not wasted	37.4	62.6	0.132	44.8	55.2	0.032	44.5	55.5	0.002	42.5	57.5	0.028
Wasted	43.9	56.1		37.8	62.2		34.2	65.8		37.9	62.1	

Variables	2005 (n=2,933)			2010 (n=3,407)			2014 (n=3,955)			2005-2014 (n=10,294)		
	Not Anemic	Anemic	p-value	Not Anemic	Anemic	p-value	Not Anemic	Anemic	p-value	Not Anemic	Anemic	p-value
<b>Underweight</b>												
Not Underweight	39.1	60.9	0.087	45.5	54.5	0.041	45.2	54.8	0.003	43.6	56.4	<0.001
Underweight	35.2	64.8		40.2	59.8		38.7	61.3		38.1	61.9	
<b>Recent fever</b>												
No	40.7	59.3	<0.001	46.4	53.6	<0.001	45.9	54.1	<0.001	44.7	55.3	<0.001
Yes	32.8	67.2		38.9	61.1		37.6	62.4		36.5	63.6	
<b>Recent diarrhea</b>												
No	39.8	60.2	<0.001	46.7	53.3	<0.001	45.0	55.0	<0.001	44.1	55.9	<0.001
Yes	29.6	70.4		31.2	68.8		33.6	66.4		31.4	68.6	
<b>Vitamin A supplement</b>												
No	38.7	61.3	0.315	43.4	56.6	0.635	39.0	61.0	0.007	39.9	60.1	0.007
Yes	36.2	63.8		44.5	55.5		45.4	54.6		43.5	56.5	
<b>Iron supplement</b>												
No	37.9	67.6	0.577	44.1	49.8	0.464	43.7	60.8	0.280	42.1	59.6	0.614
Yes	32.4	62.1		50.2	55.9		39.2	56.3		40.4	57.9	
<b>Parasite medication</b>												
No	35.3	64.7	<0.001	39.2	60.8	<0.001	36.3	63.7	<0.001	36.7	63.3	<0.001
Yes	44.7	<b>55.3</b>		47.9	<b>52.1</b>		48.3	<b>51.7</b>		47.6	<b>52.5</b>	
<b>Household Characteristics</b>												
<b>Place of residence</b>												
Urban	39.8	60.2	0.608	54.8	45.2	<0.001	56.6	43.4	<0.001	51.5	48.5	<0.001
Rural	37.5	62.5		42.3	57.7		41.3	58.7		40.5	59.5	
<b>Wealth index</b>												
Poorest	30.6	69.4	<0.001	39.6	60.4	<0.001	35.0	65.0	<0.001	35.3	64.7	<0.001
Poorer	34.9	65.1		41.4	58.6		38.5	61.5		38.3	61.7	
Middle	38.9	61.1		41.8	58.2		45.4	54.6		42.4	57.6	
Richer	42.0	58.0		45.4	54.6		45.9	54.1		44.7	55.3	
Richest	48.1	51.9		56.4	43.6		56.4	43.6		54.2	45.8	
<b>Source of drinking water</b>												
Improved	38.1	61.9	0.763	45.4	54.6	0.265	44.0	56.0	0.556	42.8	57.2	0.235
Unimproved	37.4	62.6		42.8	57.2		42.8	57.2		41.3	58.7	
<b>Type of toilet facility</b>												
Improved	47.4	52.6	<0.001	49.2	50.8	<0.001	49.8	50.2	<0.001	49.2	50.8	<0.001
Non-Improved	35.5	64.5		41.5	58.5		37.4	62.6		38.1	61.9	
<b>Region</b>												
Plain	42.7	57.3	<0.001	45.3	54.7	0.572	44.4	55.6	0.223	44.3	55.7	0.004
Tonle Sap	30.5	69.5		42.3	57.7		44.7	55.3		39.7	60.3	
Coastal	43.4	56.6		45.8	54.2		41.3	58.7		43.4	56.6	
Mountain	36.9	63.1		43.7	56.3		39.2	60.8		40.0	60.0	

Notes: Data Source: CDHS 2005, 2020, and 2014. Survey weights applied to obtain weighted percentages across survey years and pooled data.

289  
290  
291

292 **Table 3.** Unadjusted and adjusted analyses of child anaemia in Cambodia

Variables	Unadjusted (N=10,294)		Adjusted (N=10,051)	
	OR	95%CI	AOR	95%CI
<b>Mothers age (years)</b>				
15-20	Ref.	Ref.	Ref.	Ref.
20-34	0.54***	(0.41 - 0.70)	0.92	(0.68-1.25)
35-49	0.51***	(0.38 - 0.68)	0.87	(0.62-1.21)
<b>Maternal education</b>				
No education	Ref.	Ref.	Ref.	Ref.
Primary	0.89	(0.79 - 1.02)	1.00	(0.87-1.16)
Secondary and Higher	0.67***	(0.58 - 0.78)	0.97	(0.80-1.17)
<b>Maternal marital status</b>				
Ever married	Ref.	Ref.		
Married	1.06	(0.85 - 1.33)		
<b>Maternal employment</b>				
Not working	Ref.	Ref.		
Working	0.98	(0.84 - 1.14)		
<b>Maternal anemia</b>				
Non anemic	Ref.	Ref.	1.00	(1.00-1.00)
Anemic	1.76***	(1.59 - 1.95)	<b>1.76***</b>	<b>(1.58-1.97)</b>
<b>Maternal smoking</b>				
No-smoker	Ref.	Ref.	Ref.	Ref.
Smoker	1.54**	(1.19 - 1.99)	1.22	(0.91-1.63)
<b>Place of birth</b>				
Hospital	Ref.	Ref.	Ref.	Ref.
Home	1.16**	(1.05 - 1.28)	0.95	(0.84-1.10)
<b>Child age</b>				
6-11	Ref.	Ref.		
12-23	0.68**	(0.55 - 0.85)	<b>0.68***</b>	<b>(0.54-0.86)</b>
24-35	0.22***	(0.18 - 0.27)	<b>0.21***</b>	<b>(0.17-0.26)</b>
36-47	0.18***	(0.15 - 0.22)	<b>0.17***</b>	<b>(0.13-0.21)</b>
48-59	0.16***	(0.13 - 0.20)	<b>0.15***</b>	<b>(0.12-0.20)</b>
<b>Child sex</b>				
Female	Ref.	Ref.	Ref.	Ref.
Male	1.17**	(1.06 - 1.29)	<b>1.20**</b>	<b>(1.07-1.33)</b>
<b>Birth order</b>				
1-2	Ref.	Ref.	Ref.	Ref.
3-5	1.14*	(0.99 - 1.31)	1.07	(0.91-1.27)
6+	1.21*	(1.00 - 1.47)	1.09	(0.85-1.39)
<b>Child stunted</b>				
Not stunted	Ref.	Ref.	Ref.	Ref.
Stunted	1.25***	(1.13 - 1.39)	<b>1.24**</b>	<b>(1.09-1.41)</b>
<b>Child wasted</b>				
Not wasted	Ref.	Ref.	Ref.	Ref.
Wasted	1.21*	(1.02 - 1.44)	0.92	(0.75-1.12)
<b>Child underweight</b>				
Not underweight	Ref.	Ref.	Ref.	Ref.
Underweight	1.25***	(1.12 - 1.40)	<b>1.27**</b>	<b>(1.10-1.47)</b>
<b>Recent fever</b>				
No	Ref.	Ref.	Ref.	Ref.
Yes	1.41***	(1.27 - 1.57)	1.16*	(1.03-1.31)
<b>Recent diarrhea</b>				
No	Ref.	Ref.	Ref.	Ref.
Yes	1.72***	(1.48 - 2.00)	1.16	(0.97-1.38)
<b>Vitamin A supplement</b>				
No	Ref.	Ref.	Ref.	Ref.
Yes	0.86**	(0.77 - 0.96)	1.04	(0.91-1.20)



Variables	Unadjusted (N=10,294)		Adjusted (N=10,051)	
	OR	95% CI	AOR	95% CI
<b>Taken iron</b>				
No	Ref.	Ref.	Ref.	Ref.
Yes	1.08	(0.81 - 1.43)	1.30	(0.94-1.78)
<b>Parasite medication</b>				
No	Ref.	Ref.	Ref.	Ref.
Yes	0.64***	(0.58 - 0.71)	<b>0.86*</b>	<b>(0.76-0.98)</b>
<b>Place of residence</b>				
Urban	Ref.	Ref.	Ref.	Ref.
Rural	1.56***	(1.35 - 1.81)	1.10	(0.93-1.32)
<b>Wealth index</b>				
Poorest	Ref.	Ref.	Ref.	Ref.
Poorer	0.88*	(0.76 - 1.01)	0.95	(0.81-1.11)
Middle	0.74***	(0.63 - 0.87)	0.84	(0.70-1.01)
Richer	0.68***	(0.58 - 0.79)	0.85	(0.68-1.06)
Richest	0.46***	(0.39 - 0.54)	<b>0.66**</b>	<b>(0.50-0.86)</b>
<b>Source of drinking water</b>				
Improved	Ref.	Ref.		
Unimproved	1.06	(0.96 - 1.18)		
<b>Type of toilet facility</b>				
Improved	Ref.	Ref.	Ref.	Ref.
Non-improved	1.57***	(1.42 - 1.74)	1.17	(0.99-1.39)
<b>Region</b>				
Plains	Ref.	Ref.	Ref.	Ref.
Tonle Sap	1.21**	(1.06 - 1.37)	1.10	(0.96-1.26)
Coastal	1.03	(0.86 - 1.24)	1.05	(0.86-1.27)
Plateau/Mountain	1.19*	(1.03 - 1.37)	1.01	(0.86-1.19)
<b>Survey years</b>				
2005	Ref.	Ref.	Ref.	Ref.
2010	0.77**	(0.67 - 0.88)	<b>0.85*</b>	<b>(0.72-0.99)</b>
2014	0.79**	(0.69 - 0.91)	0.90	(0.76-1.07)

293 Notes: Data Source: CDHS 2005, 2020, and 2014. Survey weights applied to obtain weighted percentages across  
 294 year and pooled data. \*  $p < 0.05$ , \*\*  $p < 0.01$ , \*\*\*  $p < 0.001$   
 295

296 To evaluate potential effect modification of statistically significant associations by time and  
 297 space, interaction models were estimated for each of the statistically significant factors from the  
 298 adjusted analysis presented in Table 3. These factors were separately interacted with region and  
 299 year. Almost all of these analyses resulted in interaction terms that were not statistically  
 300 significant, indicating that the corresponding factors were associated with child anemia  
 301 regardless of the region of Cambodia where a child lived or the year in which the data were  
 302 collected. The one exception was the interaction between parasite treatment and region, which  
 303 resulted in statistically significant interaction that was visualized with predicted probabilities (see  
 304 Fig. 5). The predicted probabilities indicate that treatment for parasites was protective in the  
 305 mountainous and tonle sap regions of Cambodia as children who had recently received a

306 treatment in these regions had significantly lower probability of anemia compared to other  
307 children.

308

309 **Fig 4.** Adjusted analyses of the odds of a child aged 6-59 months being anaemic in Cambodia (N=10,051)

310

311 **Fig 5.** Predicted probability of child anemia in Cambodia by region and parasitic treatment (N=10,051)

312

313

## 314 **Discussion**

315

316 We have described the temporal and geospatial prevalence of anemia among children in  
317 Cambodia between 2005 and 2014 and noted only a slight decline during this period. The overall  
318 prevalence of anemia among children was 62.2% in 2005, 55.8% in 2010, and 56.6% in 2014,  
319 which is similar to the prevalence of anemia among children under five in South Asia (61.5% in  
320 2005, 57.4% in 2010, 54.4% in 2014, and 52% in 2019) [1,32]. According to WHO (2008), the  
321 cut-off values for public health significance are such that when the prevalence of anemia is 40%  
322 and above, the country is considered to have a serious public health problem [2]. Estimates from  
323 the WHO indicate that this pattern of minimal decline continued through 2020 and child anemia  
324 may have increased more recently due to challenges such as increased food insecurity associated  
325 with the COVID-19 pandemic [5,33].

326

327 This study suggests that Cambodia did not achieve its national nutritional targets aimed at  
328 reducing the prevalence of anemia among children down to 42% in 2015. This lapse occurred  
329 despite having a national nutrition policy, strategy, and plan of action since 2009 and  
330 corresponding public health interventions implemented to support reductions in child anemia  
331 such as iron and folic acid supplements, complementary feeding, deworming, and breastfeeding

332 [34]. This may be due, at least in part, to limited implementation and enforcement of these  
333 policies and interventions in remote areas of the country [34].

334

335 Lack of nationwide interventions to address the problem of anemia among Cambodian children  
336 was a major public health challenge. Data from the 2005-2014 Cambodia DHS indicated that the  
337 percentage of children 6-59 months who received deworming medication was 26.5% in 2005,  
338 56.7% in 2010, 58.7% in 2014 [21-23]. Children were less likely to receive these medications if  
339 they resided in rural areas, were from poorer households, and had mothers with limited education  
340 [21-23]. A little over 2% of children took standard iron and folic acid supplements through the  
341 national health system in 2010 and this rose to 6% in 2014 [22,23] The percentage of children who  
342 reported taking Vitamin A supplementation in last 6 months increased dramatically from 34.5% in 2005  
343 to 70% in 2014; lower prevalence of supplementation was reported for children aged 6-8 months  
344 (39%) and 9-11 months (59%) in 2014 [22,23]. In 2014, few children 6-23 months old were fed  
345 according to three key infant and young child feeding (IYCF) practices; e.g., early initiation  
346 (within one hour of birth) of exclusive breastfeeding, exclusive breastfeeding for the first six  
347 months of life, followed by nutritionally adequate and safe complementary foods [23]. In the last  
348 10 years, Cambodia also piloted the Lucky Iron Fish Project to prevent anemia; however, despite  
349 evidence of a positive impact on iron status, factors such as cost and need for behavioral change  
350 have hampered large scale implementation [35]. Finally, intervention reported above also  
351 included markers of iron deficiency and the prevalence of iron deficiency and/or IDA can  
352 therefore be calculated [36]; hence the interest in better understanding associations between  
353 anemia and demographic, economic, and social factors as well as health-seeking behaviors  
354 across different parts of the country[37].

355

356 Our study found several factors associated with increased odds of having anemia among children  
357 aged 6-59 months in Cambodia, including maternal anemia, being male, being stunted, being  
358 underweight, and having a history of fever in the last 2 weeks. However, children living in the  
359 richest wealth quintiles and children aged 12-59 months were less likely to have anemia.

360

361 Maternal anemia increased the odds of having anemia among children. This finding is consistent  
362 with previous studies in Laos [14], South and Southeast Asia [15], Southern Africa [16], and  
363 Uganda [38]. Mothers and children often share the same socioeconomic environment and  
364 therefore the child's diet quality is likely similar to that of the mother [14,15,18,39]. Women  
365 who live in low-income families are likely to have greater difficulty in purchasing and providing  
366 an iron-rich diet and other micro-nutrient-rich food for themselves and their children, which can  
367 increase the risk of developing childhood anemia [8,15,38]. However, this association was  
368 significant even after controlling for household wealth status, suggesting additional pathways  
369 beyond socioeconomic status. One potential pathway for newborns is that maternal anemia  
370 during pregnancy may contribute to low birth weight and preterm birth, both of which increase  
371 the risk of childhood anemia [40]. For infants, maternal anemia may also reduce iron content in  
372 breast milk and result in children having lower iron intake if exclusively breastfed while their  
373 mothers are anemic [41,42]

374

375 Children aged 12-59 months were less likely to have anemia as compared to those of 6-11  
376 months. This is consistent with other studies showing that anemia was more prevalent among  
377 children aged 6-11 months, which may stem from a higher need for iron during a child's early-  
378 life due to rapid growth and development [43], need for complementary feeding [44], and a  
379 heightened risk of diarrhea [45] and acute respiratory infection [46]. Male children have  
380 increased odds of having anemia. Similar results were found in studies in Laos [14] and sub-

381 Saharan Africa [47]. This may be explained by physiological variations in gender or due to  
382 longitudinal and faster growth rates in boys than in girls [14,47], which requires a higher demand  
383 for iron for their bodies [48], particularly during the early years of life [49].

384  
385 In addition, stunted and underweight children had increased odds of having anemia. Malnutrition  
386 is a major public health challenge in Cambodia. A prevalence of stunted youth decreased from  
387 32% to 22%, and those were underweight from 25% to 16.3%, among children under five years  
388 of age in 2014 and 2021-22 [50]. Being stunted and underweight is associated with acute and  
389 chronic malnutrition, which share common causes with anemia [51], and these factors are  
390 aggravated by food insecurity and poverty. Food insecurity and inadequate consumption of  
391 micronutrients such as iron, vitamin B12, and folate affect the nutritional status of children,  
392 which contributes to the development of anemia [51]. Therefore, public health interventions  
393 should be targeted at improving the nutritional status of children by introducing diverse  
394 complementary foods enriched with micronutrients such as iron, vitamin B12, and folate from  
395 infancy.

396  
397 Children with a history of fever had increased odds of having anemia, which is consistent with  
398 the results in previous studies conducted in Laos [14], South and Southeast Asia [15], and  
399 Southern Africa [16]. Fever among under-five children in Cambodia was a common symptom of  
400 acute and chronic inflammatory disease [34]. Cambodia is one of the malaria-endemic areas in  
401 Southeast Asia [52]. An association between childhood anemia and inflammatory infections,  
402 which includes fever, cough, and worm infestation, has been well established [53]. The possible  
403 pathway of this association is due to iron losses during the time of infections [54]. One previous  
404 study reported that iron-deficiency anemia may depend on inadequate iron-rich food intake,  
405 increased iron use in the body, and iron depletion due to parasitic infection [53]. Also, previous

406 studies have reported that malaria increases erythrocyte destruction with a simultaneous failure  
407 of the bone marrow thus jeopardizing the ability to compensate for the losses [54].

408

409 Children from wealthier households were less likely to have anemia compared to children from  
410 poorer households. This association is consistent with previous studies [14,15,18,39] and may  
411 reflect increased household access to resources such as nutrition and health care [38]. Better  
412 household income allows for living in good social and economic conditions, and hence it is easy  
413 for higher income families to provide a diverse diet, adequate care, and health services to their  
414 children [16]. Children who took drugs for intestinal parasites in previous 6 months had lower  
415 odds of having anemia compared to children who did not take drugs for intestinal parasites. It is  
416 consistent with studies in Thailand [55] and sub-Saharan Africa [56]. This may be due to the fact  
417 that intestinal parasites can induce anemia, and treating intestinal parasites with medication can  
418 reduce the incidence of anemia in children [57].

419

420 This study was conducted using pooled data from Cambodia Demographic and Health surveys  
421 from 2005, 2010, and 2014. This enabled us to describe the temporal and geographical trends in  
422 anemia among children aged 6-59 months using nationally representative data. Likewise, we  
423 were able to examine factors associated with anemia among children throughout Cambodia.  
424 However, as a cross-sectional study it was not possible to examine causality in these  
425 relationships. This study relied on hemoglobin as the measure of anemia based on WHO criteria;  
426 however, future studies could consider alternative red blood cell indices [58]. As an  
427 observational study that drew heavily upon self-reported data it is possible that there was some  
428 recall bias or social desirability bias in the data reported. As a secondary data analysis, several  
429 known risk factors for anemia, including parasitic infections such as malaria, and dietary  
430 information were not included in this study due to data limitations. The HemoCue device has

431 been used widely in field settings where resources are limited since it is portable, simple to use,  
432 and reasonably priced; however, air bubbles, too much blood on the cuvettes' back side,  
433 overfilling of the cuvettes, and inadequate mixing of the samples can all provide inaccurate  
434 results [59]. Additionally, there is variability in Hemoglobin (Hb) and measurements dependent  
435 on Hemocue models, which may have affected the prevalence of anemia presented in this study  
436 [59]. Finally, the most recent round of CDHS data with information on anemia status was  
437 gathered in 2014 (Hemoglobin measurements were not collected in CDHS 2022). We  
438 acknowledge that given the span of time since the data used in this study were collected, the  
439 results from this study may no longer reflect present prevalence of anemia among children in  
440 Cambodia. However, estimates of anemia among children in Cambodia from the WHO suggest a  
441 pattern of minimal decline consistent with our findings that continued through 2020. Moreover,  
442 child anemia may have increased more recently due to challenges such as increased food  
443 insecurity associated with the COVID-19 pandemic [5,33]. Future research should further  
444 evaluate these relationships and the general prevalence of anemia among young Cambodian  
445 children aged 6-59 months once additional data become available.

446

## 447 **Conclusion**

448 Our findings suggest that the high prevalence of anemia among children aged 6-59 months in  
449 Cambodia declined only slightly over the 10-year period between 2005 and 2014. Anemia  
450 among children continues to be a major public health concern in Cambodia. This study indicated  
451 that childhood anemia was associated with various factors, including being male, being younger,  
452 being stunted, being underweight, having a history of fever or diarrhea in the last 2 weeks,  
453 maternal anemia, being a member of the poorest families, did not take drugs for intestinal  
454 parasites and having a place of residence in a rural setting. Public health practitioners and policy

455 makers should consider demographic groups represented by these characteristics to produce  
456 better targeted interventions to address anemia among children in Cambodia.

457

458



459 **Funding Statement**

460 The authors received no specific funding for this work.

461

462 **Competing Interests**

463 The authors have declared that no competing interests exist.

464

465 **Data Availability**

466 Our study used 2005, 2010, 2014 and 2021-22 Cambodia Demographic and Health Survey

467 (CDHS) datasets. The DHS data are publicly available from the website at (URL:

468 <https://www.dhsprogram.com/data/available-datasets.cfm>). The Shapefiles for administrative

469 boundaries in Cambodia are publicly accessible through DHS website at

470 (URL:<https://spatialdata.dhsprogram.com/boundaries/#view=table&countryId=KH>).

471

472 **Acknowledgments**

473 The authors are grateful to DHS-ICF for the gathering, cleaning, and provision of the data used

474 for this paper. We are indebted to Dr. Chhea Chhorvann and Dr. Heng Sopheab from the

475 National Institute of Public Health, Phnom Penh, Cambodia for their encouragement, feedback,

476 and support.

## 477 Reference

- 478 1. Stevens GA, Paciorek CJ, Flores-Urrutia MC, Borghi E, Namaste S, Wirth JP, et al. National,  
479 regional, and global estimates of anaemia by severity in women and children for 2000–19: a pooled  
480 analysis of population-representative data. *The Lancet Global Health*. 2022;10(5):e627-e39.
- 481 2. World Health Organization (WHO). Anaemia. Available online:  
482 [\[https://www.who.int/data/nutrition/nlis/info/anaemia\]](https://www.who.int/data/nutrition/nlis/info/anaemia) 2023.
- 483 3. World Health Organization (WHO). Global nutrition targets 2025: anaemia policy brief  
484 (WHO/NMH/NHD/14.4). Geneva: World Health Organization; 2014. 2014.
- 485 4. Roser M, Ritchie H, Dadonaite B. Child and infant mortality. *Our world in data*  
486 [\[https://ourworldindata.org/child-mortality\]](https://ourworldindata.org/child-mortality) (accessed January 2023). 2013.
- 487 5. World Health Organization (WHO). Global Health Observatory Data Repository, Appears in:  
488 Anaemia in children. Available online: [\[https://www.who.int/data/gho/data/indicators/indicator-  
489 details/GHO/anaemia-in-children-under-5-years-number\]](https://www.who.int/data/gho/data/indicators/indicator-details/GHO/anaemia-in-children-under-5-years-number). Accessed March 2023. 2023.
- 490 6. Chami N, Hau DK, Masoza TS, Smart LR, Kayange NM, Hokororo A, et al. Very severe anemia  
491 and one year mortality outcome after hospitalization in Tanzanian children: A prospective cohort study.  
492 *PloS one*. 2019;14(6):e0214563. Epub 2019/06/21. doi: 10.1371/journal.pone.0214563. PubMed PMID:  
493 31220109; PubMed Central PMCID: PMCPmc6586275.
- 494 7. Chaparro CM, Suchdev PS. Anemia epidemiology, pathophysiology, and etiology in low- and  
495 middle-income countries. *Annals of the New York Academy of Sciences*. 2019;1450(1):15-31. Epub  
496 2019/04/23. doi: 10.1111/nyas.14092. PubMed PMID: 31008520; PubMed Central PMCID:  
497 PMCPmc6697587.
- 498 8. Shimanda PP, Amukugo HJ, Norström F. Socioeconomic factors associated with anemia among  
499 children aged 6-59 months in Namibia. *Journal of public health in Africa*. 2020;11(1):1131. Epub  
500 2020/11/20. doi: 10.4081/jphia.2020.1131. PubMed PMID: 33209233; PubMed Central PMCID:  
501 PMCPmc7649727.
- 502 9. Balarajan Y, Ramakrishnan U, Özaltın E, Shankar AH, Subramanian S. Anaemia in low-income  
503 and middle-income countries. *The lancet*. 2011;378(9809):2123-35.
- 504 10. Cornet M, Le Hesran J-Y, Fievet N, Cot M, Personne P, Gounoue R, et al. Prevalence of and risk  
505 factors for anemia in young children in southern Cameroon. *The American journal of tropical medicine  
506 and hygiene*. 1998;58(5):606-11.
- 507 11. Foote EM, Sullivan KM, Ruth LJ, Oremo J, Sadumah I, Williams TN, et al. Determinants of  
508 anemia among preschool children in rural, western Kenya. *The American journal of tropical medicine and  
509 hygiene*. 2013;88(4):757.
- 510 12. Khan JR, Awan N, Misu F. Determinants of anemia among 6-59 months aged children in  
511 Bangladesh: evidence from nationally representative data. *BMC pediatrics*. 2016;16:3. Epub 2016/01/13.  
512 doi: 10.1186/s12887-015-0536-z. PubMed PMID: 26754288; PubMed Central PMCID:  
513 PMCPmc4707771.
- 514 13. Stevens GA, Bennett JE, Hennocq Q, Lu Y, De-Regil LM, Rogers L, et al. Trends and mortality  
515 effects of vitamin A deficiency in children in 138 low-income and middle-income countries between 1991  
516 and 2013: a pooled analysis of population-based surveys. *The Lancet Global Health*. 2015;3(9):e528-e36.
- 517 14. Keokenchanh S, Kounnavong S, Midorikawa K, Ikeda W, Morita A, Kitajima T, et al. Prevalence  
518 of anemia and its associated factors among children aged 6–59 months in the Lao People’s Democratic  
519 Republic: A multilevel analysis. *PloS one*. 2021;16(3):e0248969.
- 520 15. Sunuwar DR, Singh DR, Pradhan PMS, Shrestha V, Rai P, Shah SK, et al. Factors associated  
521 with anemia among children in South and Southeast Asia: a multilevel analysis. *BMC Public Health*.  
522 2023;23(1):343. doi: 10.1186/s12889-023-15265-y.
- 523 16. Ntenda PAM, Nkoka O, Bass P, Senghore T. Maternal anemia is a potential risk factor for anemia  
524 in children aged 6-59 months in Southern Africa: a multilevel analysis. *BMC Public Health*.  
525 2018;18(1):650. Epub 2018/05/24. doi: 10.1186/s12889-018-5568-5. PubMed PMID: 29788935; PubMed  
526 Central PMCID: PMCPmc5964691.
- 527 17. Kothari MT, Coile A, Huestis A, Pullum T, Garrett D, Engmann C. Exploring associations  
528 between water, sanitation, and anemia through 47 nationally representative demographic and health

- 529 surveys. *Annals of the New York Academy of Sciences*. 2019;1450(1):249-67. Epub 2019/06/25. doi:  
530 10.1111/nyas.14109. PubMed PMID: 31232465; PubMed Central PMCID: PMC6771505.
- 531 18. Greffeuille V, Sophonneary P, Laillou A, Gauthier L, Hong R, Hong R, et al. Persistent  
532 inequalities in child undernutrition in Cambodia from 2000 until today. *Nutrients*. 2016;8(5):297.
- 533 19. Um S, Sopheab H, Yom A, Muir JA. Trends and factors associated with anemia among pregnant  
534 women aged 15-49 years old in Cambodia: Data analysis of the Cambodia Demographic and Health  
535 Surveys. medRxiv. 2022:2022.09.08.22279710.
- 536 20. Demographic and Health Surveys (DHS). The Demographic and Health Surveys (DHS) Program;  
537 ICF: Rockville, MD, USA, 2020; Available online: [<https://dhsprogram.com/data/available-datasets.cfm>].  
538 2020.
- 539 21. National Institute of Public Health, National Institute of Statistics, and ORC Macro. Cambodia  
540 Demographic and Health Survey 2005. Phnom Penh, Cambodia and Calverton, Maryland, USA: National  
541 Institute of Public Health, National Institute of Statistics and ORC Macro. 2005. Available online:  
542 <https://dhsprogram.com/pubs/pdf/FR185/FR185%5BApril-27-2011%5D.pdf>. 2006.
- 543 22. National Institute of Statistics, Directorate General for Health, and ICF Macro. Cambodia  
544 Demographic and Health Survey 2010. Phnom Penh, Cambodia and Calverton, Maryland, USA: National  
545 Institute of Statistics, Directorate General for Health, and ICF Macro. 2010. Available online:  
546 <https://dhsprogram.com/pubs/pdf/Fr249/Fr249.pdf>. 2011.
- 547 23. National Institute of Statistics, Directorate General for Health, and ICF International. Cambodia  
548 Demographic and Health Survey 2014. Phnom Penh, Cambodia, and Rockville, Maryland, USA: National  
549 Institute of Statistics, Directorate General for Health, and ICF International. Available online:  
550 <https://dhsprogram.com/pubs/pdf/fr312/fr312.pdf>. 2015.
- 551 24. Demographic and Health Surveys (DHS). Demographic and health surveys methodology,  
552 Biomarker field manual, ICF International: [Internet]. Calverton; 2012. Available from:  
553 [https://dhsprogram.com/pubs/pdf/DHSM7/DHS6\\_Biomarker\\_Manual\\_9Jan2012.pdf](https://dhsprogram.com/pubs/pdf/DHSM7/DHS6_Biomarker_Manual_9Jan2012.pdf). 2012.
- 554 25. Shamah Levy T, Méndez-Gómez-Humarán I, Morales Ruán MD, Martínez Tapia B, Villalpando  
555 Hernández S, Hernández Ávila M. Validation of Masimo Pronto 7 and HemoCue 201 for hemoglobin  
556 determination in children from 1 to 5 years of age. *PloS one*. 2017;12(2):e0170990. Epub 2017/02/09. doi:  
557 10.1371/journal.pone.0170990. PubMed PMID: 28170445; PubMed Central PMCID: PMC65295714.
- 558 26. Yadav K, Kant S, Ramaswamy G, Ahamed F, Jacob OM, Vyas H, et al. Validation of Point of  
559 Care Hemoglobin Estimation Among Pregnant Women Using Digital Hemoglobinometers (HemoCue  
560 301 and HemoCue 201+) as Compared with Auto-Analyzer. *Indian journal of hematology & blood  
561 transfusion : an official journal of Indian Society of Hematology and Blood Transfusion*. 2020;36(2):342-  
562 8. Epub 2020/05/20. doi: 10.1007/s12288-019-01196-5. PubMed PMID: 32425387; PubMed Central  
563 PMCID: PMC67229048.
- 564 27. StataCorp. Stata Statistical Software: Release 17. College Station, TX: StataCorp LLC. 2021.
- 565 28. Desktop A. Release 10.8. 1.(2020). ESRI (Environmental Systems Research Institute), Redlands,  
566 CA.
- 567 29. Demographic and Health Surveys (DHS). Spatial Data Repository Boundaries. Available online:  
568 [<https://spatialdata.dhsprogram.com/boundaries/#view=table&countryId=KH>].
- 569 30. Cunningham SAaM, J. A. . *The Cambridge Handbook of Research Methods and Statistics for the  
570 Social and Behavioral Sciences: Volume 1: Building a Program of Research*, volume 1, book section Data  
571 Cleaning. Cambridge University Press. 2023.
- 572 31. Chhea C, Ir P, Sopheab H. Low birth weight of institutional births in Cambodia: Analysis of the  
573 Demographic and Health Surveys 2010-2014. *PloS one*. 2018;13(11):e0207021. Epub 2018/11/09. doi:  
574 10.1371/journal.pone.0207021. PubMed PMID: 30408102; PubMed Central PMCID: PMC6224106.
- 575 32. World Health Organization (WHO). The global prevalence of anaemia in 2011. Geneva: World  
576 Health Organization. 2015.
- 577 33. Muir JA, Dheresa M, Madewell ZJ, Getachew T, Mengesha G, Whitney CG, et al. Food  
578 Insecurity amid COVID-19 Lockdowns: Assessing Sociodemographic Indicators of Vulnerability in  
579 Harar and Kersa, Ethiopia. medRxiv. 2023:2023.01.31.23284545. doi: 10.1101/2023.01.31.23284545.
- 580 34. National Maternal and Child Health Center. National Nutrition Program; Fast Track Road Map  
581 for Improving Nutrition 2014 - 2020. Available online [[https://nmchc.gov.kh/wp-  
582 content/uploads/2021/07/FTRM-for-Nutrition\\_Eng\\_Final-May-2014with-signature.pdf](https://nmchc.gov.kh/wp-content/uploads/2021/07/FTRM-for-Nutrition_Eng_Final-May-2014with-signature.pdf)]. . 2020.

- 583 35. Armstrong GR, Dewey CE, Summerlee AJ. Iron release from the Lucky Iron fish: Safety  
584 considerations. *Asia Pacific journal of clinical nutrition*. 2017;26(1):148-55.
- 585 36. Charles CV, Summerlee AJ, Dewey CE. Anemia in Cambodia: Prevalence, etiology and research  
586 needs. *Asia Pacific journal of clinical nutrition*. 2012;21(2):171-81.
- 587 37. Charles CV, Dewey CE, Hall A, Hak C, Channary S, Summerlee AJ. Anemia in Cambodia: a  
588 cross-sectional study of anemia, socioeconomic status and other associated risk factors in rural women.  
589 *Asia Pacific journal of clinical nutrition*. 2015;24(2):253-9.
- 590 38. Nankinga O, Aguta D, Kabahuma C. Trends and determinants of anemia in Uganda: further  
591 analysis of the Demographic and Health Surveys. *DHS Working Papers*. 2019;(149).
- 592 39. Pasricha S-R, Black J, Muthayya S, Shet A, Bhat V, Nagaraj S, et al. Determinants of anemia  
593 among young children in rural India. *Pediatrics*. 2010;126(1):e140-e9.
- 594 40. Abioye AI, McDonald EA, Park S, Ripp K, Bennett B, Wu HW, et al. Maternal anemia type  
595 during pregnancy is associated with anemia risk among offspring during infancy. *Pediatric research*.  
596 2019;86(3):396-402.
- 597 41. Kumar A, Rai AK, Basu S, Dash D, Singh JS. Cord blood and breast milk iron status in maternal  
598 anemia. *Pediatrics*. 2008;121(3):e673-e7.
- 599 42. Skau JK, Grenov B, Chamnan C, Chea M, Wieringa FT, Dijkhuizen MA, et al. Stunting, wasting  
600 and breast-feeding as correlates of body composition in Cambodian children at 6 and 15 months of age.  
601 *British Journal of Nutrition*. 2019;121(6):688-98.
- 602 43. Tengco LW, Rayco-Solon P, Solon JA, Sarol JN, Jr., Solon FS. Determinants of anemia among  
603 preschool children in the Philippines. *Journal of the American College of Nutrition*. 2008;27(2):229-43.  
604 Epub 2008/08/12. doi: 10.1080/07315724.2008.10719695. PubMed PMID: 18689554.
- 605 44. Hondru G, Laillou A, Wieringa FT, Poirot E, Berger J, Christensen DL, et al. Age-Appropriate  
606 Feeding Practices in Cambodia and the Possible Influence on the Growth of the Children: A Longitudinal  
607 Study. *Nutrients*. 2019;12(1). Epub 2019/12/22. doi: 10.3390/nu12010012. PubMed PMID: 31861580;  
608 PubMed Central PMCID: PMC67019767.
- 609 45. World Health Organization. Diarrhoeal disease 2017 Available from: [https://www.who.int/news-](https://www.who.int/news-room/fact-sheets/detail/diarrhoeal-disease)  
610 [room/fact-sheets/detail/diarrhoeal-disease](https://www.who.int/news-room/fact-sheets/detail/diarrhoeal-disease).
- 611 46. Um S, Vang D, Pin P, Chau D. Trends and determinants of acute respiratory infection symptoms  
612 among under-five children in Cambodia: Analysis of 2000 to 2014 Cambodia demographic and health  
613 surveys. *PLOS Glob Public Health*. 2023;3(5):e0001440. Epub 2023/05/03. doi:  
614 10.1371/journal.pgph.0001440. PubMed PMID: 37134089; PubMed Central PMCID: PMC67019767.
- 615 47. Bjertness E, Wu T, Stigum H, Nafstad P. Acute mountain sickness, arterial oxygen saturation and  
616 heart rate among Tibetan students who reascend to Lhasa after 7 years at low altitude: a prospective  
617 cohort study. *BMJ open*. 2017;7(7):e016460.
- 618 48. Zuffo CRK, Osório MM, Taconeli CA, Schmidt ST, Silva BHCd, Almeida CCB. Prevalence and  
619 risk factors of anemia in children. *Jornal de pediatria*. 2016;92:353-60.
- 620 49. Konstantyner T, Roma Oliveira TC, de Aguiar Carrazedo Taddei JA. Risk factors for anemia  
621 among Brazilian infants from the 2006 National Demographic Health Survey. *Anemia*. 2012;2012.
- 622 50. National Institute of Statistics PP, Cambodia, Ministry of Health Phnom Penh, Cambodia, The  
623 DHS Program, ICF, Rockville, Maryland, USA. Cambodia Demographic and Health Survey 2021–22.  
624 Phnom Penh, Cambodia, and Rockville, Maryland, USA: NIS, MoH, and ICF. 2022. Available from:  
625 <https://dhsprogram.com/pubs/pdf/FR377/FR377.pdf>.
- 626 51. Engidaye G, Melku M, Yalew A, Getaneh Z, Asrie F, Enawgaw B. Under nutrition, maternal  
627 anemia and household food insecurity are risk factors of anemia among preschool aged children in Menz  
628 Gera Midir district, Eastern Amhara, Ethiopia: a community based cross-sectional study. *BMC public*  
629 *health*. 2019;19(1):1-11.
- 630 52. National Centre for Parasitology Entomology and Malaria Control (CNM). National Malaria  
631 Program Review. CNM; Phnom Penh, Cambodia: 2019. Available online:  
632 <https://www.cnm.gov.kh/userfiles/National%20Malaria%20Program%20review%202019.pdf>. 2019.
- 633 53. Alamneh TS, Melesse AW, Gelaye KA. Determinants of anemia severity levels among children  
634 aged 6–59 months in Ethiopia: Multilevel Bayesian statistical approach. *Scientific Reports*.  
635 2023;13(1):4147. doi: 10.1038/s41598-022-20381-7.

- 636 54. Menendez C, Fleming AF, PL. A. Malaria-related anaemia. *Parasitology today*. 2000 Nov  
637 1;16(11):469-76. 2000.
- 638 55. Watthanakulpanich D, Maipanich W, Pubampen S, Sa-Nguankiat S, Pooudouang S,  
639 Chantaranipapong Y, et al. Impact of hookworm deworming on anemia and nutritional status among  
640 children in Thailand. *The Southeast Asian journal of tropical medicine and public health*. 2011;42(4):782-  
641 92. Epub 2012/02/04. PubMed PMID: 22299460.
- 642 56. Tesema GA, Worku MG, Tessema ZT, Teshale AB, Alem AZ, Yeshaw Y, et al. Prevalence and  
643 determinants of severity levels of anemia among children aged 6–59 months in sub-Saharan Africa: A  
644 multilevel ordinal logistic regression analysis. *PloS one*. 2021;16(4):e0249978.
- 645 57. Girum T, Wasie A. The Effect of Deworming School Children on Anemia Prevalence: A  
646 Systematic Review and Meta-Analysis. *The open nursing journal*. 2018;12:155-61. Epub 2018/09/11. doi:  
647 10.2174/1874434601812010155. PubMed PMID: 30197721; PubMed Central PMCID:  
648 PMC6110060.
- 649 58. Ntenda PAM, Chuang K-Y, Tiruneh FN, Chuang Y-C. Multilevel analysis of the effects of  
650 individual-and community-level factors on childhood Anemia, severe Anemia, and hemoglobin  
651 concentration in Malawi. *Journal of tropical pediatrics*. 2018;64(4):267-78.
- 652 59. Rappaport AI, Karakochuk CD, Whitfield KC, Kheang KM, Green TJ. A method comparison  
653 study between two hemoglobinometer models (Hemocue Hb 301 and Hb 201+) to measure hemoglobin  
654 concentrations and estimate anemia prevalence among women in Preah Vihear, Cambodia. *International  
655 journal of laboratory hematology*. 2017;39(1):95-100.

656

657

658 **Supporting information**

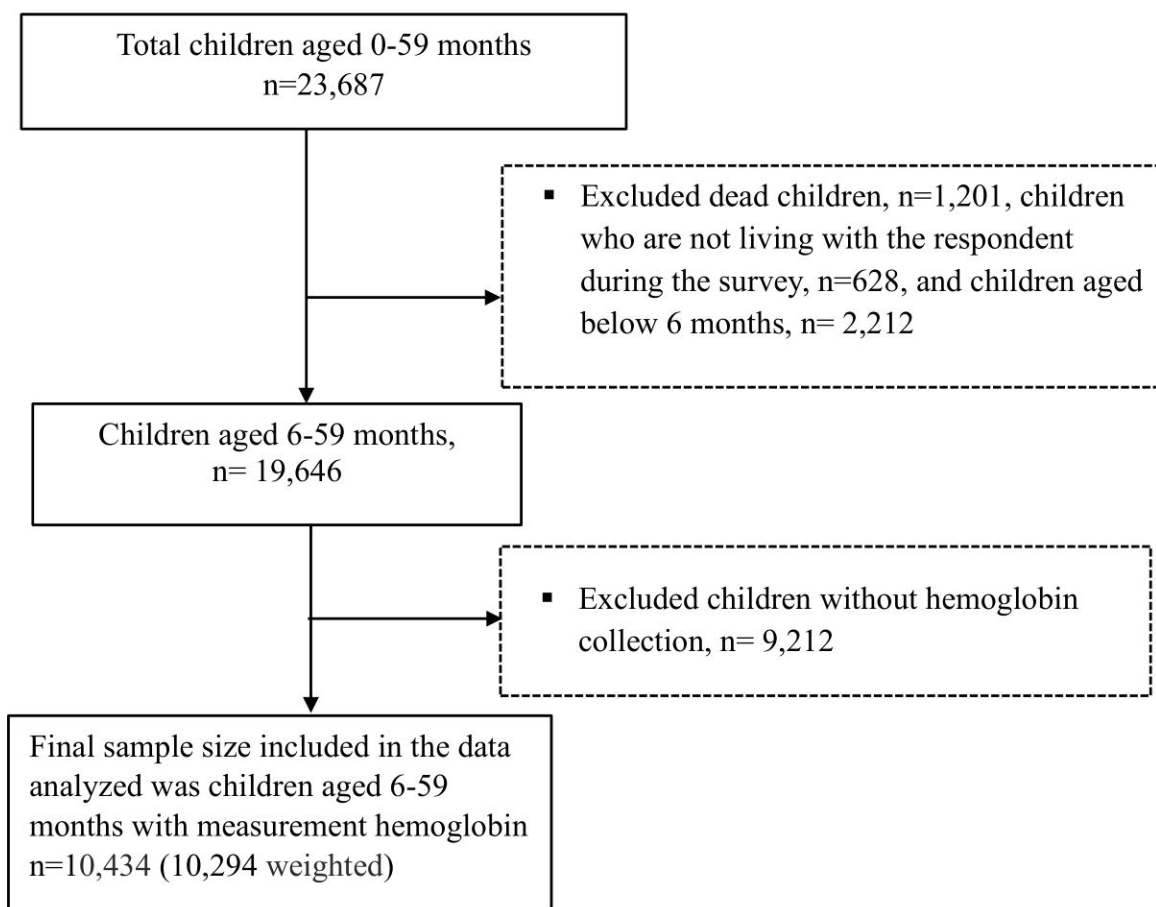
659 **S1 Table.** Results of checking multicollinearity using Variance Inflation Factor

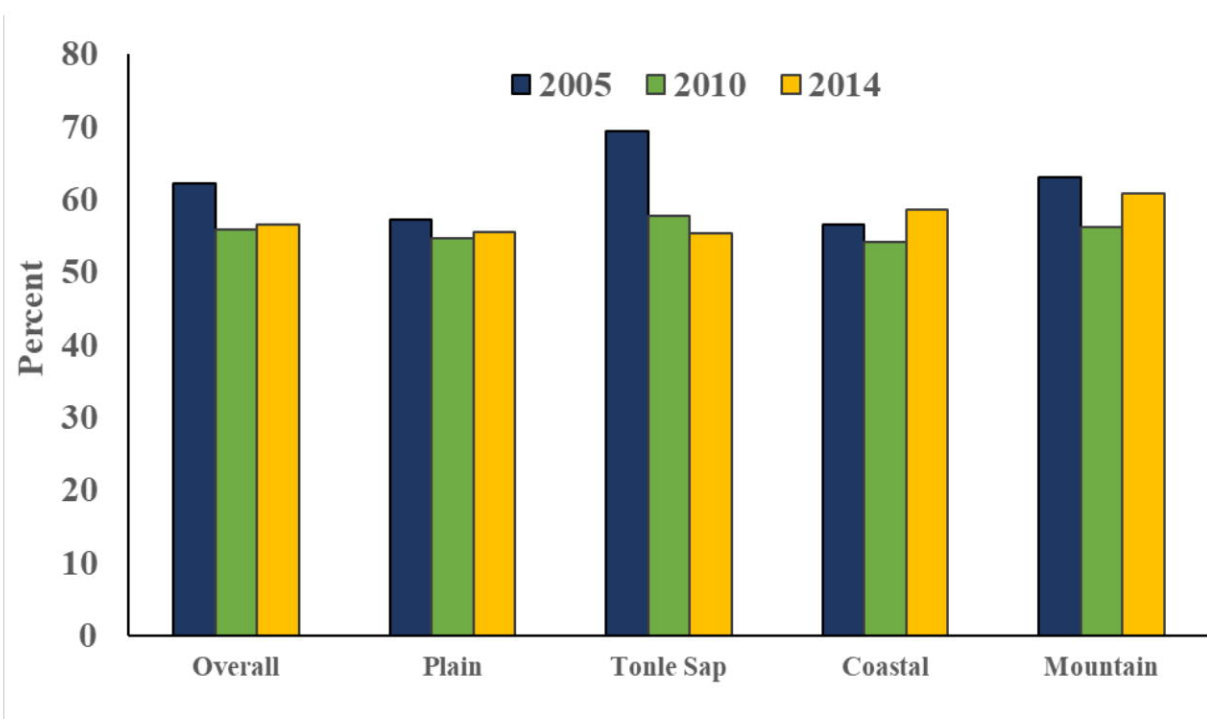
660

661 **S2 Table.** Prevalence of Anemia in the 19 domains in CDHS 2005 2010 and 2014

662

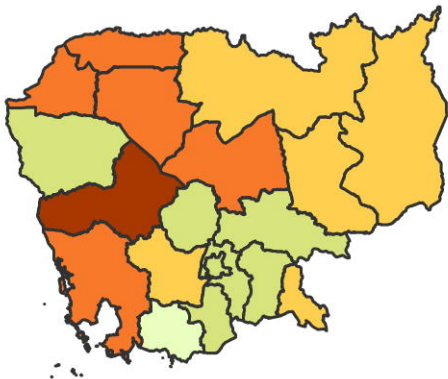
663



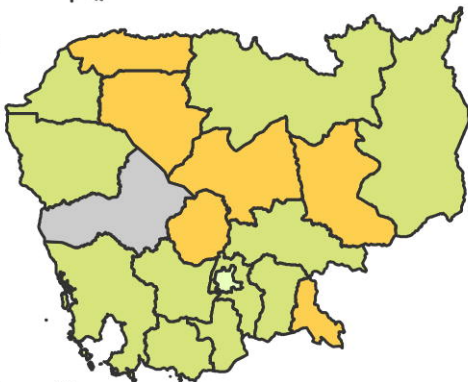




2005

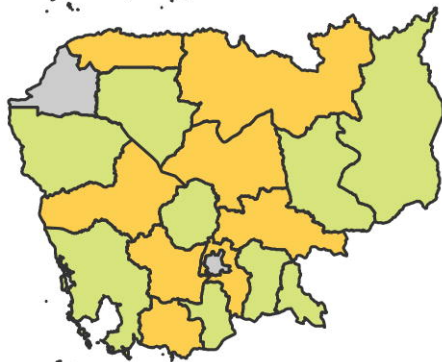
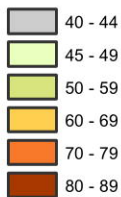


2010

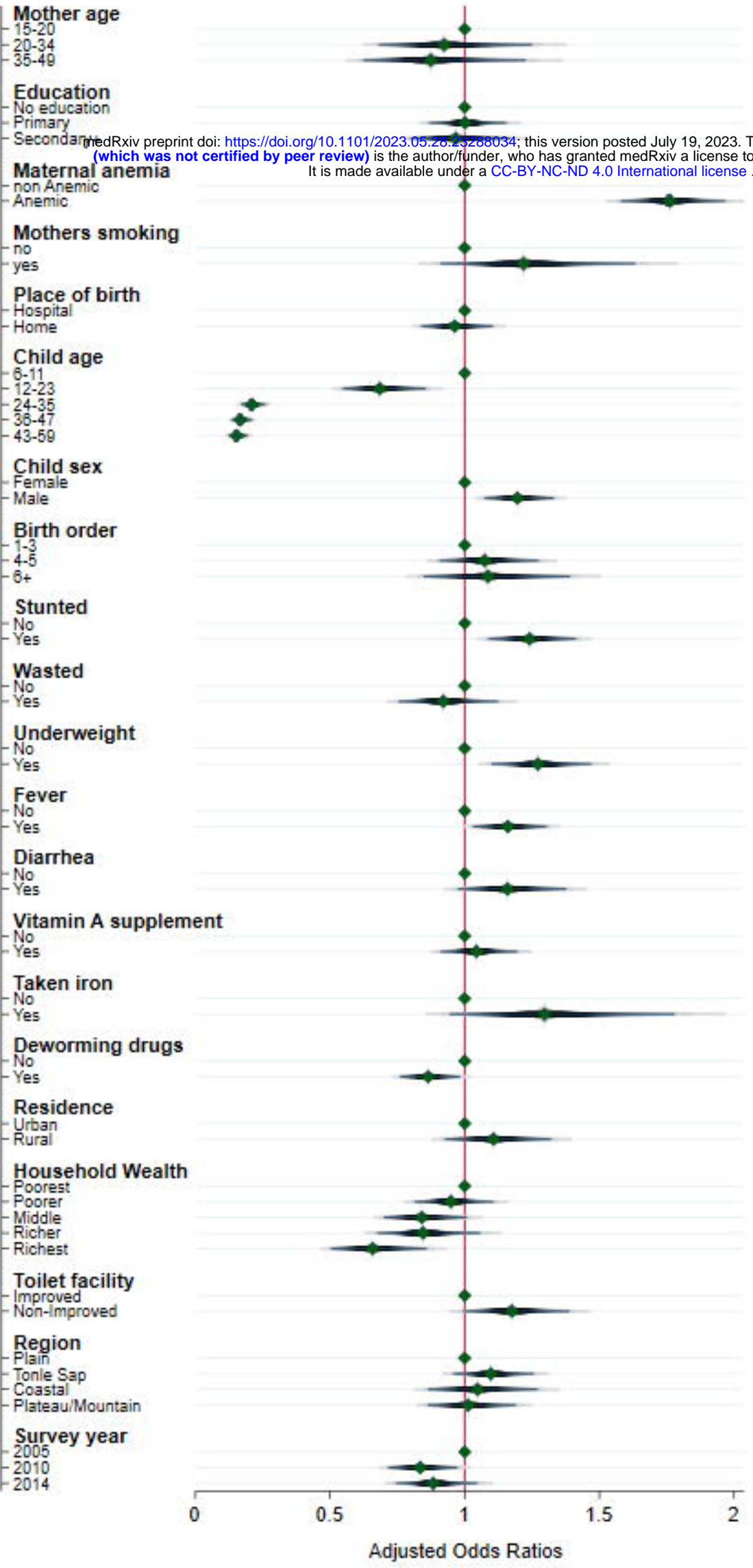


2014

**% Anemia**



medRxiv preprint doi: <https://doi.org/10.1101/2023.05.28.23288034>; this version posted July 19, 2023. The copyright holder for this preprint (which was not certified by peer review) is the author/funder, who has granted medRxiv a license to display the preprint in perpetuity. It is made available under a [CC-BY-NC-ND 4.0 International license](https://creativecommons.org/licenses/by-nc-nd/4.0/).



Parasite Treatment No Yes

