

32 **Abstract**

33 *Background:* Reduced Environmental Stimulation Therapy via floatation (floatation-REST) is a
34 behavioral intervention designed to attenuate exteroceptive sensory input to the nervous system.
35 Pilot studies in anxious and depressed individuals demonstrated that single sessions of floatation-
36 REST are safe, well-tolerated, and associated with acute anxiolysis. However, there is not
37 sufficient evidence of the feasibility of floatation-REST as a repeated intervention.

38 *Methods:* We randomized 75 individuals with anxiety and depression to six sessions of
39 floatation-REST in different formats (pool-REST or pool-REST preferred) or an active
40 comparator (chair-REST). Feasibility was assessed via adherence rate to the assigned
41 intervention, tolerability via duration of REST utilization and overall study dropout rate, and
42 safety via incidence of serious or non-serious adverse events.

43 *Results:* Six-session adherence was 85% for pool-REST, 89% for pool-REST preferred, and 74%
44 for chair-REST. Dropout rates did not differ significantly between the treatment conditions.
45 Mean session durations were consistently above 50 minutes, and when allowed to choose the
46 duration and frequency, participants opted to float for an average of 75 minutes. There were no
47 serious adverse events associated with any intervention. Positive experiences were endorsed
48 more commonly than negative ones and were also rated at higher levels of intensity.

49 *Conclusions:* Taken together, six sessions of floatation-REST appear feasible, well-tolerated, and
50 safe in anxious and depressed individuals. Floatation-REST induces positively-valenced
51 experiences with few negative effects. Larger randomized controlled trials evaluating markers of
52 clinical efficacy are warranted.

53 **Clinical Trial Registration Identifier:** NCT03899090

54

Introduction

55 Reduced Environmental Stimulation Therapy via floatation (i.e., floatation-REST) is a
56 behavioral intervention designed to systematically attenuate exteroceptive sensory input to the
57 nervous system. Dating back to the 1950's, REST was first introduced to assess how humans
58 would react to low-level or monotonous stimulation of the nervous system, with subsequent
59 investigations exploring REST as a therapeutic intervention for habit modification during
60 smoking cessation or stress reduction [1]. The earliest forms of REST involved strict
61 confinement to a bed in a dimly lit cubicle for days at a time (i.e., 'chamber-REST') [2] or full-
62 body submersion in a vertical water tank with the assistance of a breathing helmet [3, 4]. Since
63 then, several technological developments have considerably expanded the availability of
64 different REST formats. Currently, the most common form of floatation-REST involves floating
65 effortlessly in a shallow pool of water heated to skin temperature and saturated with Epsom salt
66 to increase buoyancy (consequently, it is sometimes also called 'pool-REST'). The environment
67 is specially engineered to be lightproof, soundproof, and humidity and temperature-controlled, so
68 that input from visual, auditory, olfactory, gustatory, thermal, tactile, vestibular, and
69 proprioceptive channels is minimized, as is movement and speech [5]. Chair-REST has also
70 emerged as an alternative form of REST [6, 7]. In this environment, individuals recline in an
71 ergonomically engineered chair designed to take pressure off the spinal cord. Typically, these
72 chairs are placed in dimly lit and quiet rooms, similar but not identical to what would be
73 experienced during pool-REST. Our previous work has highlighted that although the degree of
74 sensory attenuation of chair-REST is not as substantial as traditional pool-REST, single sessions
75 of chair-REST can produce effects on negative affect, anxiety, stress, relaxation, serenity, and
76 refreshment of a similar nature in clinically anxious individuals [7]. Additionally, chair-REST

77 induced a similar though weaker pattern of neural changes in resting state functional connectivity
78 as pool-REST [6]. Such “zero-gravity chairs” have garnered public attention and are now
79 available in many large department and furniture stores. The availability and utilization of pool-
80 REST has grown in recent years, with hundreds of recreational “float centers” opening across the
81 world during the past decade [8]. Despite the increase in public interest and consumption of
82 various forms of REST, there has been limited research investigating the feasibility of the
83 technique, especially in clinical populations.

84 Preliminary insights into the tolerability and safety of floatation-REST in anxious and
85 depressed individuals are restricted to a few studies. A wait-list control trial reported that
86 individuals scoring high on self-reported measures of generalized anxiety were largely adherent
87 to 12 sessions of floatation-REST [9]. Another study found that individuals with stress-related
88 pain and burnout depression were able to complete up to 33 sessions of floatation-REST [10].
89 However, neither of these studies assessed adverse events that could have arisen during the
90 repeated sessions of floatation-REST, nor did they formally evaluate intervention feasibility. In
91 prior studies, most anxious individuals who were assigned fixed durations of pool-REST or
92 chair-REST for 45 to 90 minutes in length tolerated this amount [5, 7, 9, 11], but the impact of
93 flexible assignment on preference has not been investigated. Finally, our initial safety studies
94 examining the effects of single sessions of pool-REST or chair-REST in clinically anxious
95 individuals revealed no serious adverse events, suggesting that the brief intervention exposure
96 was safe and well-tolerated [5, 7]. Regarding safety, it is important to note that there have been
97 several deaths reported with the use of floatation tanks at recreational float centers associated
98 with concurrent drug (i.e., ketamine) or alcohol use [12], suggesting the need for inclusion of
99 substance use screening. There have also been reports of auditory and visual hallucinations

100 during floatation-REST [13]. However, these are generally described in a positive light, and are
101 infrequent [1, 5]. Other negative events that have been reported include occasional skin itchiness
102 or dry mouth, as well as discomfort resulting from accidental introduction of saltwater to the
103 eyes or open cuts [5, 14]. Despite the common utilization of floatation-REST by the public, and
104 an emerging clinical trials literature, no studies have systematically evaluated the safety profile
105 of this intervention across multiple sessions.

106 This study examined the feasibility, tolerability, and safety of floatation-REST as a
107 repeatable intervention in clinically anxious and depressed individuals using a randomized
108 design with an active comparator (chair-REST). Our primary outcome was feasibility. We
109 hypothesized that feasibility would be reflected by 6-session adherence rates of 80% or above, a
110 level similar to standard behavioral interventions for anxiety and depression [15, 16]. As an
111 additional feasibility assessment, we evaluated for potential differences in credibility and
112 expectancy between the assigned REST interventions. We predicted that all forms of floatation-
113 REST would be well-tolerated, with low dropout rates (<20%) over the course of the
114 intervention and 6-month follow-up period. We also predicted that individuals would remain in
115 their assigned REST environment for the majority of the allotted duration of time. Based on the
116 prior literature, we predicted that the REST interventions would be safe and associated with
117 minimal adverse reactions. Finally, as an exploratory aim, we examined the impact of flexible
118 assignment on floatation-REST preference in terms of the chosen frequency and duration of float
119 sessions, in order to provide information to help optimize the design of future trials.

120 **Methods**

121 ***Participant Recruitment***

122 75 treatment-seeking adults with anxiety and depression were recruited through the Laureate
123 Institute for Brain Research's participant databases ([17] see Supplement for sample size
124 determination). Inclusion criteria included high levels of current anxiety (as measured by an
125 OASIS score ≥ 6 ; [18]) and anxiety sensitivity (as measured by an ASI-3 score ≥ 24 ; [19]). Of
126 note, the initial eligibility criteria of OASIS score ≥ 8 and ASI-3 score ≥ 29 were lowered in
127 September 2020 to increase participant recruitment to meet the targeted rate specified in the
128 funded grant. Depression symptoms were measured via the Patient Health Questionnaire (PHQ-
129 9, [20]), but an inclusion cutoff score was not specified. Other inclusion criteria included: age
130 between 18 and 60 years, and either no prior experience of floatation-REST or a minimum of 1
131 year since the last float session. If taking psychiatric medications or receiving psychotherapy, the
132 treatment regimen was required to be stable, defined as having taken the medication or been in
133 therapy for 8 weeks or longer. Daily benzodiazepine use was exclusionary. Participants taking
134 benzodiazepines or opioids on an as-needed basis had to be willing to abstain from use within 24
135 hours of each float session. Other exclusion criteria included uncomfotability in water or
136 receiving blood draws, any skin conditions or open wounds that could cause pain when exposed
137 to saltwater, diagnosis of a neurological disorder (e.g., epilepsy), a comorbid diagnosis of bipolar
138 disorder, schizophrenia, or an eating disorder, active suicidality with plan or intent, receiving
139 current inpatient psychiatric treatment, or moderate to severe substance use disorder (as
140 determined by the MINI 7.0). Evidence of current drug use was also assessed prior to each
141 floatation-REST session via urine drug screen testing for amphetamines, methamphetamines,
142 cocaine, barbiturates, benzodiazepines, methylenedioxymethamphetamine (MDMA), methadone,

143 opiates, oxycodone, phencyclidine, propoxyphene, and ketamine, and breathalyzer testing for
144 alcohol; a positive readout on any of these tests was exclusionary. Pregnancy was exclusionary
145 based on a positive urine pregnancy test. All study procedures were approved by the local ethics
146 committee (Western Institutional Review Board Protocol #: 20150528) and were performed in
147 accordance with Declaration of Helsinki. All participants provided their written informed
148 consent prior to participation and were compensated for their study involvement. The study was
149 pre-registered on ClinicalTrials.gov (NCT03899090).

150

151 *Experimental Design and Procedures*

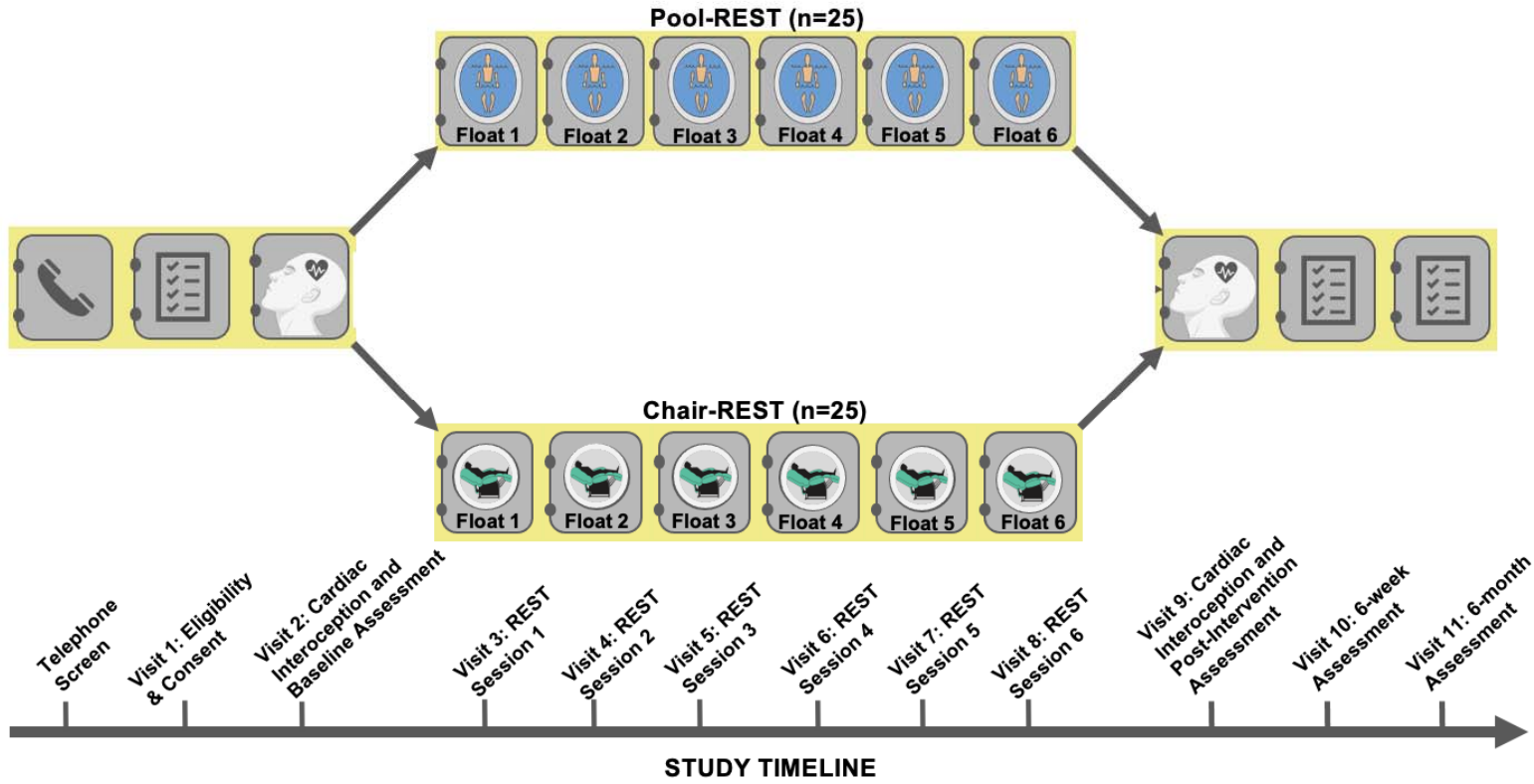
152 Using a randomized parallel study design, participants completed a total of 11 visits. The
153 study visit timeline is outlined in Figure 1. Participants initially completed a brief telephone
154 screen to collect demographic information and evaluate potential study eligibility. During visit 1,
155 official study eligibility was determined using the inclusion/exclusion criterion. After providing
156 informed consent, participants returned for visit 2, where baseline symptom ratings were
157 completed via clinician-reported and self-reported scales, and some behavioral testing of cardiac
158 interoception (results to be reported separately). Visit 2 concluded by unblinding and informing
159 the participant of their randomized (1:1:1) assignment to one of three intervention conditions:
160 pool-REST, pool-REST preferred, or chair-REST (i.e., the active comparator, described further
161 below). The randomization schedule was pre-determined by a statistical consultant uninvolved in
162 the study before participant recruitment and stored as a blinded electronic list. At the time of
163 assignment, the study coordinator would unblind and reveal the participant's allocation. At the
164 start of visit 3, all participants completed the Credibility/Expectancy Questionnaire (CEQ; [21]),
165 to assess their pre-intervention attitudes towards the assigned intervention arm. Participants then

166 completed six sessions (visits 3-8) according to their assigned condition. We assessed serious
167 and non-serious adverse events after each session via a detailed survey of positive and negatively
168 valenced experiences using a scale drawn from our prior floatation-REST study [5] and via
169 verbal self-report throughout the study period. Following the sixth and final session (visit 8),
170 participants returned to the lab for a post-intervention session (visit 9), where clinician-reported
171 and self-reported symptom ratings were once again collected and behavioral testing of cardiac
172 interoception was completed. The same clinician and self-reported symptom scales were
173 completed again at 6-week (visit 10) and 6-month (visit 11) follow-up visits. Follow-up surveys
174 were initially administered in the laboratory via an electronic tablet, but due to the Covid-19
175 pandemic these were switched to remote visits starting in May 2020. All surveys were obtained
176 electronically using REDCap (Research Electronic Data Capture; Version 10.6.19; [22, 23]).

177

178

179 **Figure 1.** Study Visit Timeline.



180
181

182 ***Experimental Conditions***

183 *Pool-REST.* The pool-REST condition, which was delivered at the Laureate Institute for Brain
184 Research facility, involved prescribed (i.e., fixed) session durations and inter-session intervals
185 within an open or enclosed circular float pool (Floataway Inc., Norfolk, United Kingdom).
186 Participants were instructed to complete 1-hour float sessions once per week for six weeks. Each
187 pool measured 2.44 meters in diameter and 0.28 meters in depth. The water in each pool was
188 saturated with over 800 kilograms of Epsom salt (magnesium sulphate), creating a specific
189 gravity of approximately 1.26. This dense salt-water solution allowed for participants to float
190 effortlessly in a supine position. Both pools were constructed in rooms designed to be lightproof
191 and soundproof. The air and water temperature of each room was also calibrated to match the
192 temperature of the skin surface (~35.0 degrees Celsius). More details about how the pool-REST
193 condition was specially engineered to minimize all manner of external sensory stimulation can
194 be found in Feinstein et al., 2018a. We allowed participants to choose between the open and
195 enclosed pool to provide some flexibility for preference and to facilitate the optimal flow of
196 participants through the study.

197

198 *Pool-REST Preferred.* The pool-REST preferred condition involved increased flexibility of both
199 the session duration and the frequency. Participants were instructed that they were to complete
200 six sessions in the open or closed pool, but they were allowed to freely set their float duration for
201 up to two hours per session. In addition, they were permitted to choose the frequency of their
202 floating schedule, such that they could float as often as they preferred within a 12-week period,
203 with the only requirement being that there needed to be a minimum of 24 hours between
204 sessions.

205
206 *Chair-REST*. During chair-REST, which was delivered at the Laureate Institute for Brain
207 Research facility, participants reclined in a Zero Gravity Chair (PC510, Classic Power, Series 2,
208 Human Touch Inc., Long Beach, CA). This active comparator condition was tailored to closely
209 match the pool-REST condition on many parameters including a supine body position, the same
210 prescribed session duration and inter-session interval (i.e., 1-hour sessions completed once per
211 week for six weeks) in a room with reduced light and sound, and a similar instruction set
212 emphasizing the importance of stillness and wakefulness throughout each session (see
213 Supplemental Materials for full instruction set). Participants were informed that the chair was
214 ergonomically designed to take pressure off the spinal cord and used memory foam backing to
215 help the chair conform to each participant’s body shape. To match the instruction set across
216 REST conditions, the Zero Gravity chair was explicitly referred to as the “float chair” and the act
217 of lying in the chair was referred to as “floating.” The chair was placed in a dark and quiet room,
218 although the degree of light and sound attenuation was not as strong as that delivered in the pool
219 conditions (i.e., participants could perceive a low-level of external sound and light). Unlike the
220 pool conditions, the ambient temperature was maintained at a normal room temperature of ~23.3
221 degrees Celsius, so participants randomized to the chair-REST condition remained fully clothed
222 during each session.

223

224 ***Measures***

225 *Events Assessment* — A 43-item self-report measure ([5]; see Supplemental Material) was used
226 to assess safety and subjective experiences occurring in each float session. This checklist was
227 adapted from our previous pilot studies and was designed to assess potential adverse experiences

228 associated with floatation-REST. 29 of the 43 items assessed the presence of negative physical or
229 psychological events including itchiness, dry mouth, pain, anxiety/panic, flashbacks, suicidality,
230 and hallucinations, as well as the presence of positive experiences (e.g., heightened feelings of
231 joy, refreshment, serenity); these 14 items were included to reduce response biases, as well as to
232 prevent a sole focus on assessing negative experiences associated with REST. Each item was
233 rated on four-point scale (“none,” “mild,” “moderate,” or “extreme”) using the following
234 instructions: *“Did you notice or experience an increase in any of these items during or shortly
235 after your float today? Please only mark items that showed an increase from your typical day-to-
236 day experience.”* For any item that had an endorsement other than “None,” participants were
237 provided a free-response box to describe their experience in more detail. For certain negative
238 symptoms (strong emotional memories, flashbacks, heightened thoughts related to death, visual
239 or auditory hallucinations, out-of-body experiences, feelings of detachment, loss of control over
240 behavior, and flight of ideas/racing thoughts) receiving any endorsement other than “None”
241 prompted participants with the following question: *“Overall, was this a positive or negative
242 experience?”* [5]. Items rated as “none” were coded as 0, negatively experienced items ranged
243 from -3 (“extremely negative”) to -1 (“mildly negative”), and positively experienced items
244 ranged from 1 (“mildly positive) to 3 (“extremely positive”).

245
246 *Credibility/Expectancy Assessment* — The Credibility/Expectancy Questionnaire (CEQ; [21])
247 was used to measure attitudes about treatment feasibility. The CEQ is a 6-item self-report
248 measure with individual items rated on a 1-9 or a 0%-100% scale. Items assess attitudes about
249 “how believable, convincing, and logical a treatment is” (i.e., credibility; [24]), and expectations
250 one holds about how the treatment might influence symptoms (i.e., expectancy).

251
252 There were no changes to the primary outcome or the main secondary outcomes reported in the
253 current study. A number of additional secondary outcomes were specified in May, 2022, prior to
254 analysis of the data, and will be included in a separate report.

255 **Statistical Analysis**

256 ***Feasibility***

257 The primary outcome of feasibility was assessed by calculating adherence to the assigned
258 sessions via the formula $\hat{p} = \sum_{i=1}^n p_i/n$, where p_i was the proportion of completed sessions (out
259 of 6) for subject i and n was the number of subjects per condition (i.e., 25). To measure
260 attitudinal aspects of feasibility, pre-treatment credibility beliefs were calculated by taking the
261 mean of the first three items of the CEQ [25], while expectancy beliefs were captured via a
262 single item rated on a 0 to 100% scale assessing how much improvement in their symptoms the
263 participant thought would occur after completing the assigned intervention. Two separate one-
264 way ANOVAs were performed to assess for between-group differences in pre-intervention
265 credibility and expectancies, respectively.

266

267 ***Tolerability***

268 Tolerability was assessed in three ways; first, by calculating the overall dropout rate for each
269 condition (i.e., (number of subjects who withdrew from the study or who were lost to follow-
270 up)/25). Secondly, a Kaplan-Meier analysis with post-hoc log-rank tests was used to test for
271 differential dropout rates over time for the three assigned conditions [26]. Third, within-session
272 tolerability was assessed by fitting a linear mixed models (estimated using REML and the
273 nloptwrap optimizer) to predict the duration of each session with visit and condition as fixed

274 effects (formulas: Session Duration (in minutes) ~ Visit * Condition). The model included
275 subject ID as a random effect (formula: ~1 | Subject ID) and utilized an AR1 covariance
276 structure. Post-hoc two-sided t-tests with Holm corrections were used to interpret significant
277 main effects, as well as simple effects for all significant interactions.

278

279 *Safety*

280 The number of adverse and serious adverse events and their relationship to the intervention were
281 recorded over the course of the entire study, including during the follow-up period. We then fit a
282 linear mixed model (estimated using REML and the nloptwrap optimizer) to predict event
283 magnitude ratings with event, visit, and condition parameters (formulas: Event Intensity Rating ~
284 Event * Visit * Condition). The models included subject ID and visit as random effects (formula:
285 ~1 | Subject ID/Visit) and utilized an AR1 covariance structure. Post-hoc two-sided t-tests with
286 Holm corrections (Holm, 1979) were used to interpret significant main effects, as well as simple
287 effects for all significant interactions. All analyses were performed in RStudio (Version 3.6.0;
288 [27]).

289

290 *Pool-REST Preferred*

291 The impact of flexible assignment on preferred frequency of floating for the pool was
292 measured by calculating the average number of days between float sessions and the
293 corresponding standard deviation. To assess whether session frequency in this condition was
294 related to baseline severity of anxiety, depression, and anxiety sensitivity symptoms, we
295 examined bivariate correlations between float frequency and baseline OASIS, PHQ-9, and ASI-3
296 scores. Additionally, we examined bivariate correlations between the average session duration

297 (in minutes) for each intervention and baseline measures of symptom severity (i.e., OASIS,
298 PHQ-9, and ASI-3).

299 **Results**

300 *Participant Characteristics*

301 Recruitment occurred between February 2019 and October 2021, with a four month
302 pause starting March 2020 during the Covid-19 pandemic and was terminated upon achievement
303 of the recruitment target. Sociodemographic and clinical characteristics for the 75 individuals
304 who were randomized to each intervention arm are summarized in Table 1. A CONSORT
305 diagram reflecting the flow of participants in each arm is shown in Figure 2. One-way ANOVAs
306 revealed that the groups did not differ significantly on age, education, medication status (i.e.,
307 number of psychotropic medications), BMI, or baseline OASIS, ASI-3, or PHQ-9 scores. Chi-
308 squared tests indicated that there were no significant differences between the conditions
309 regarding sex, race/ethnicity, or the frequency of clinical diagnosis or rate of psychotherapy
310 utilization. Most of the sample identified as non-Hispanic White (81.3%). The most common
311 psychiatric diagnosis in the sample was major depressive disorder (97.3%) followed by
312 generalized anxiety disorder (50.7%).

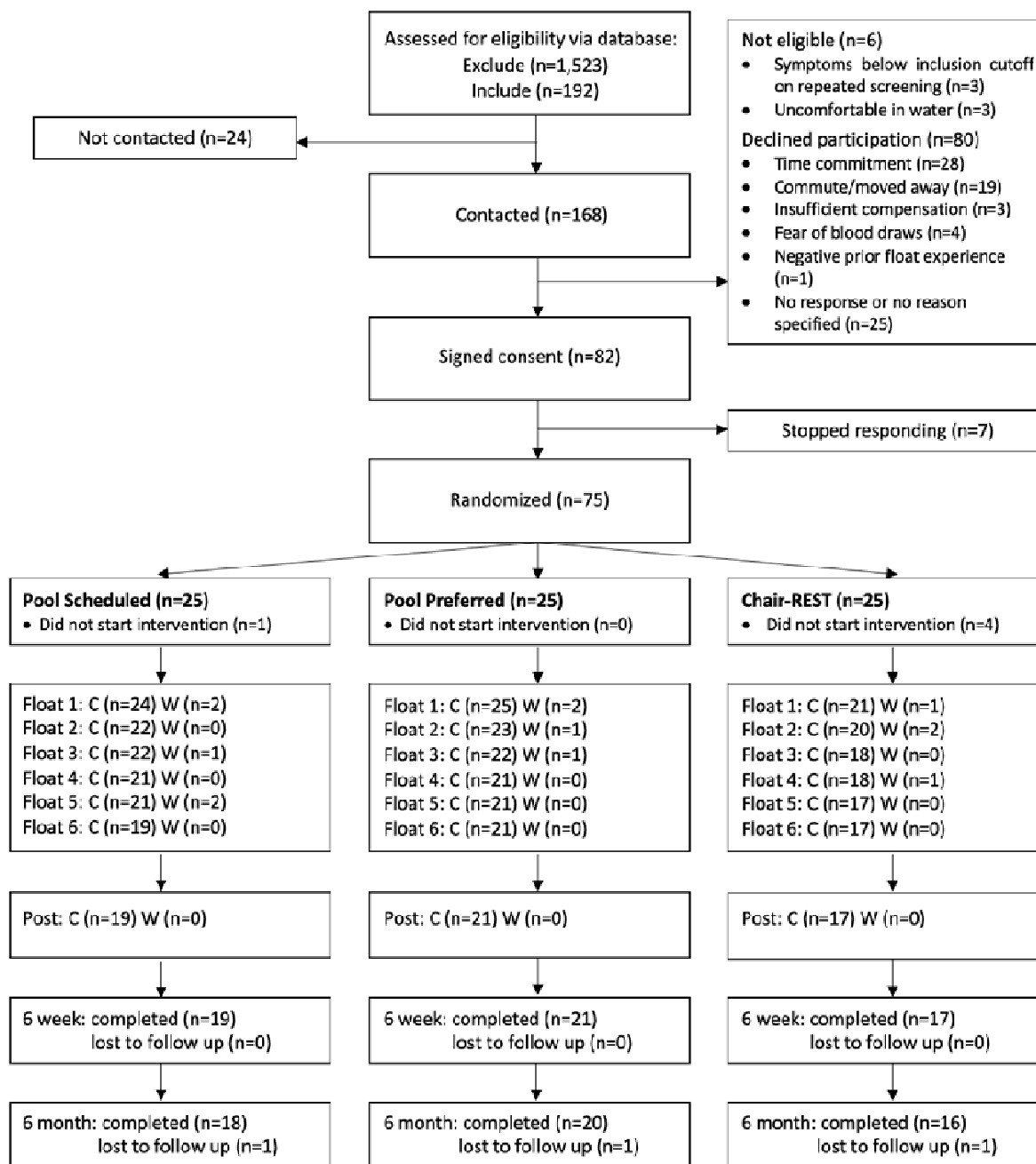
313
314 **Table 1.** *Participant Demographics, DSM-5 Diagnostic Comorbidities, and Screening Scores at*
315 *Study Entry*

| | <i>Chair-REST</i> (n=25) | <i>Pool-REST</i> (n=25) | <i>Pool-REST</i> <i>preferred</i> (n=25) | <i>F</i> | <i>df</i> | <i>p</i> |
|---------------------|-----------------------------|----------------------------|--|-----------------|-----------|----------|
| Demographics | | | | | | |
| Sex | | | | $\chi^2 = 0.15$ | 2 | 0.93 |
| Male, N (%) | 6 (24%) | 6 (24%) | 5 (20%) | | | |
| Female, N (%) | 19 (76%) | 19 (76%) | 20 (80%) | | | |
| Age | 37.8 (13.4) | 33.4 (11.7) | 34.3 (9.0) | 1.01 | 72 | 0.37 |
| Years of Education | 15.2 (1.3) | 15.1 (1.8) | 15.8 (1.7) | 1.15 | 71 | 0.32 |

| | | | | | | |
|--|-------------|------------|-------------|-----------------|----|------|
| BMI | 29.3 (7.3) | 28.8 (5.1) | 27.9 (6.9) | 0.30 | 70 | 0.74 |
| Psychiatric Medications ^a | 0.7 (1.1) | 0.3 (0.6) | 1.0 (1.3) | 3.00 | 72 | 0.06 |
| Receiving Psychotherapy, N(%) | 11 (44) | 11 (44) | 16 (64) | $\chi^2 = 2.67$ | 2 | 0.26 |
| Race/Ethnicity, N(%) | | | | $\chi^2 = 8.75$ | 10 | 0.56 |
| White/Caucasian | 22 (88) | 20 (80) | 19 (76) | | | |
| Black/African American | 2 (1) | 6 (24) | 4 (16) | | | |
| Am. Indian/Alaskan Native | 5 (20) | 5 (20) | 4 (16) | | | |
| Asian/Pacific Islander | 1 (4) | 0 (0) | 0 (0) | | | |
| Hispanic | 1 (4) | 2 (8) | 2 (8) | | | |
| Unspecified | 0 (0) | 0 (0) | 2 (8) | | | |
| Self-Report Measures | | | | | | |
| OASIS Anxiety | 10.1 (2.5) | 9.4 (2.8) | 9.9 (2.5) | 0.53 | 69 | 0.59 |
| ASI-3 Anxiety Sensitivity | 35.6 (13.0) | 39.9 (9.4) | 40.5 (11.8) | 0.04 | 69 | 0.97 |
| PHQ-9 Depression | 12.5 (4.9) | 11.5 (5.5) | 12.1 (4.7) | 0.28 | 69 | 0.76 |
| Psychiatric Diagnosis, N(%)^b | | | | $\chi^2 = 3.78$ | 8 | 0.88 |
| Major depressive disorder | 24 (96) | 24 (96) | 25 (100) | | | |
| Generalized anxiety disorder | 10 (40) | 17 (68) | 11 (44) | | | |
| Social anxiety disorder | 9 (36) | 12 (48) | 8 (32) | | | |
| Posttraumatic stress disorder | 9 (36) | 8 (32) | 7 (28) | | | |
| Panic disorder | 3 (12) | 6 (24) | 7 (28) | | | |

316 *Note.* Numbers reflect means and standard deviation unless otherwise indicated. BMI = Body
317 Mass Index; OASIS = Overall Anxiety Severity and Impairment Scale [18] measured at pre-
318 intervention visit; ASI-3 = Anxiety Sensitivity Index-3 [19], measured at pre-intervention visit;
319 PHQ-9 = Patient Health Questionnaire-9 [20] measured at pre-intervention visit. ^aNumbers
320 reflect the mean number of prescribed psychiatric medications taken by the participant, measured
321 at the initial screening. ^bDiagnosis was determined by clinician interview using the MINI version
322 7.0 [28]. For brevity, only comorbid diagnoses with frequency > 10% across the entire sample (n
323 = 75) are listed. As this study allowed for comorbid diagnoses, percentage totals will be > 100%.
324
325

326 **Figure 2. CONSORT Diagram.** Note. C = Completed. W = Withdrew.



327

328

329 **Feasibility**

330 Average treatment adherence was 89% (5.3 ± 1.6 sessions) for the pool-REST preferred

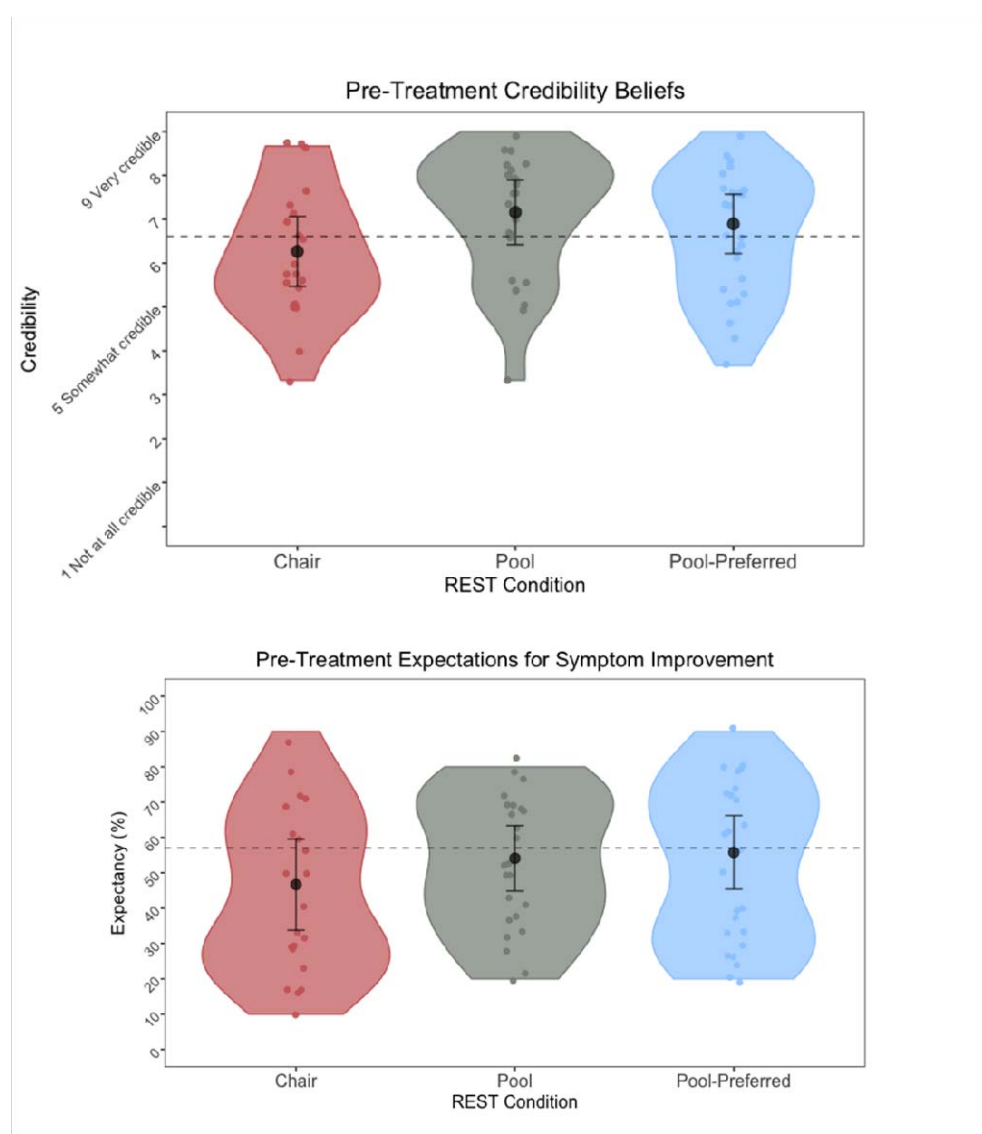
331 condition, 85% (5.1 ± 1.8 sessions) for the pool-REST condition, and 74% (4.4 ± 2.5 sessions)

332 for the chair-REST condition. One-way ANOVAs revealed that the REST conditions did not
333 differ significantly on pre-intervention CEQ credibility ($F(2, 67) = 2.42, p = 0.097$) or
334 expectancy ($F(2, 67) = 0.98, p = 0.379$; see Figures 3a-3b). The average credibility score for the
335 three groups was 6.67 ± 1.50 . On average, the three groups expected the intervention to halve
336 their symptoms ($50.3 \pm 21.6\%$).

337

338

339 **Figure 3.** Pre-Treatment Credibility Beliefs and Expectations for Symptom Improvement. *Note.*
340 Figures reflect pre-intervention ratings for credibility of beliefs (top) and expectations for
341 symptom improvement (bottom) on the Credibility and Expectancy Questionnaire, according to
342 the assigned intervention. The black dots and error bars represent the mean and standard error of
343 the mean, respectively. Grey dashed lines reflect an established average for credibility and
344 expectancy beliefs of other non-pharmacological treatments (e.g., psychotherapy, see
345 discussion). There were no significant group differences in levels of pre-treatment credibility or
346 expectancy beliefs ($ps > .05$).



347

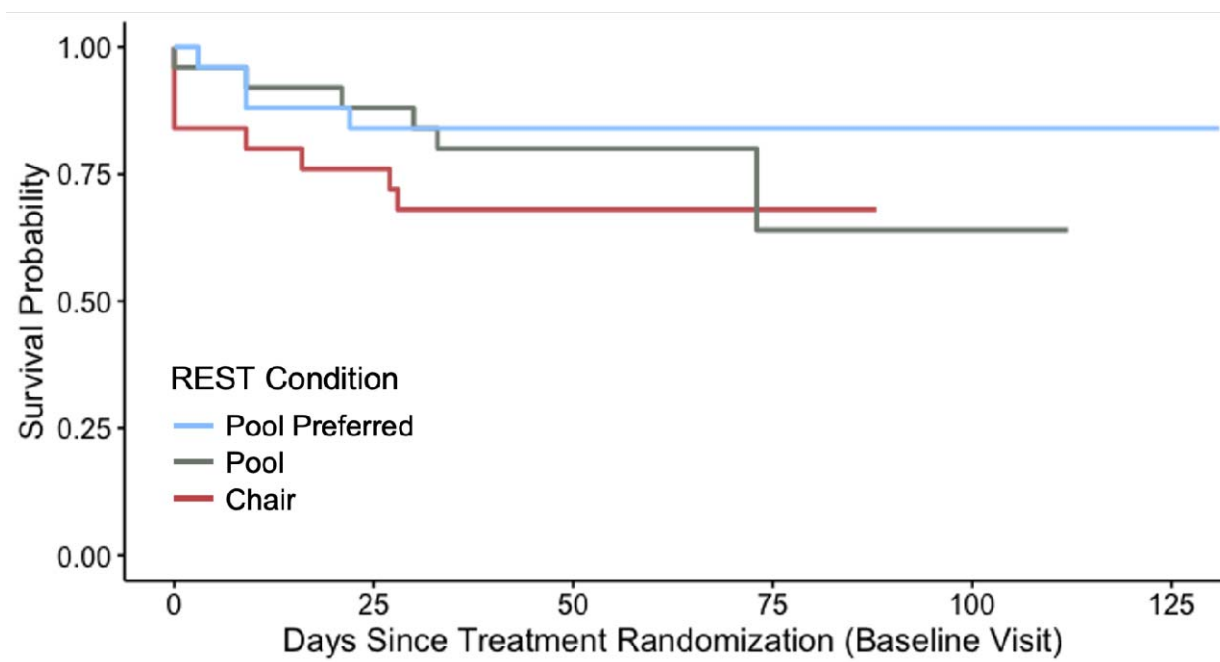
348

349 **Tolerability**

350 The Kaplan-Meier survival analyses did not indicate a significant difference in treatment
351 dropout among the three groups ($p = .40$, Figure 4). Following the randomization at the baseline
352 visit, the chair-REST condition had the highest dropout rate at 16% ($n = 4$ individuals), versus
353 4% ($n = 1$ individual) for the pool-REST condition and 0% for the pool-REST preferred
354 condition. Across the six-session intervention, the chair-REST condition demonstrated an overall
355 dropout rate of 32%, while the pool-REST condition dropout rate was 24%, and the pool-REST
356 preferred dropout rate was 16%. The dropout rate at the 6-month follow up was 36% for the
357 chair-REST condition, 28% for the pool-REST condition, and 20% for the pool-REST preferred
358 condition (1 individual dropped out from each of the groups).

359

360 **Figure 4.** Kaplan-Meier Survival Curve illustrating dropout over time for each REST Condition.



361
362

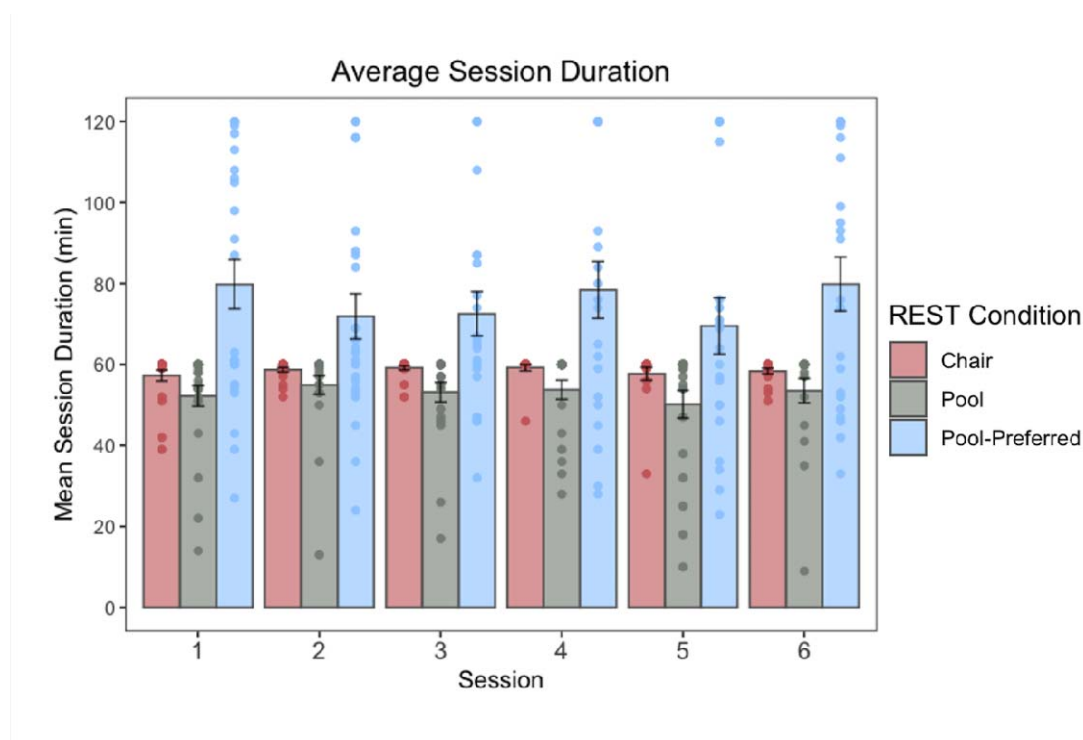
363 Of note, due to the onset of the Covid-19 pandemic and mandatory shutdowns, two
364 participants were withdrawn from the study by the study investigators. One participant in the
365 Chair-REST condition was withdrawn from the study after session 2 (at day 27), and one
366 participant from the Pool-REST condition was withdrawn following their fifth session (at day
367 73). This dropout information was entered into the analysis, but due to the small amount of
368 dropout and no discernable group pattern, no further corrective action was taken during the
369 analysis.

370 The linear mixed effects analysis of within-session tolerability (i.e., session duration;
371 Figure 5), revealed a main effect of condition ($F(2) = 10.33, p < .001, \eta_p^2 = .24$), such that
372 session durations were significantly longer for the pool-REST preferred condition ($M = 75.4 \pm$
373 29.4 minutes) than either the chair-REST ($M = 58.4 \pm 4.3$ minutes; $p = .007, d = .810$) or pool-
374 REST condition ($M = 53.0 \pm 12.3$ minutes; $p = .0002, d = .996$). There were no statistically
375 significant differences in session duration between the chair-REST and pool-REST conditions (p
376 $= .292$). Across the 373 REST sessions administered across the entire study, 317 sessions (85%
377 of total) were 50 minutes or longer in duration.

378

379

380 **Figure 5. Session durations.** Note. Session durations were significantly longer for the pool-
381 REST preferred condition than either the chair-REST ($p = .007$) or pool-REST conditions ($p =$
382 $.0002$). There were no statistically significant differences in session duration between the chair-
383 REST and pool-REST conditions ($p = .292$). Duration did not vary as a function of session.



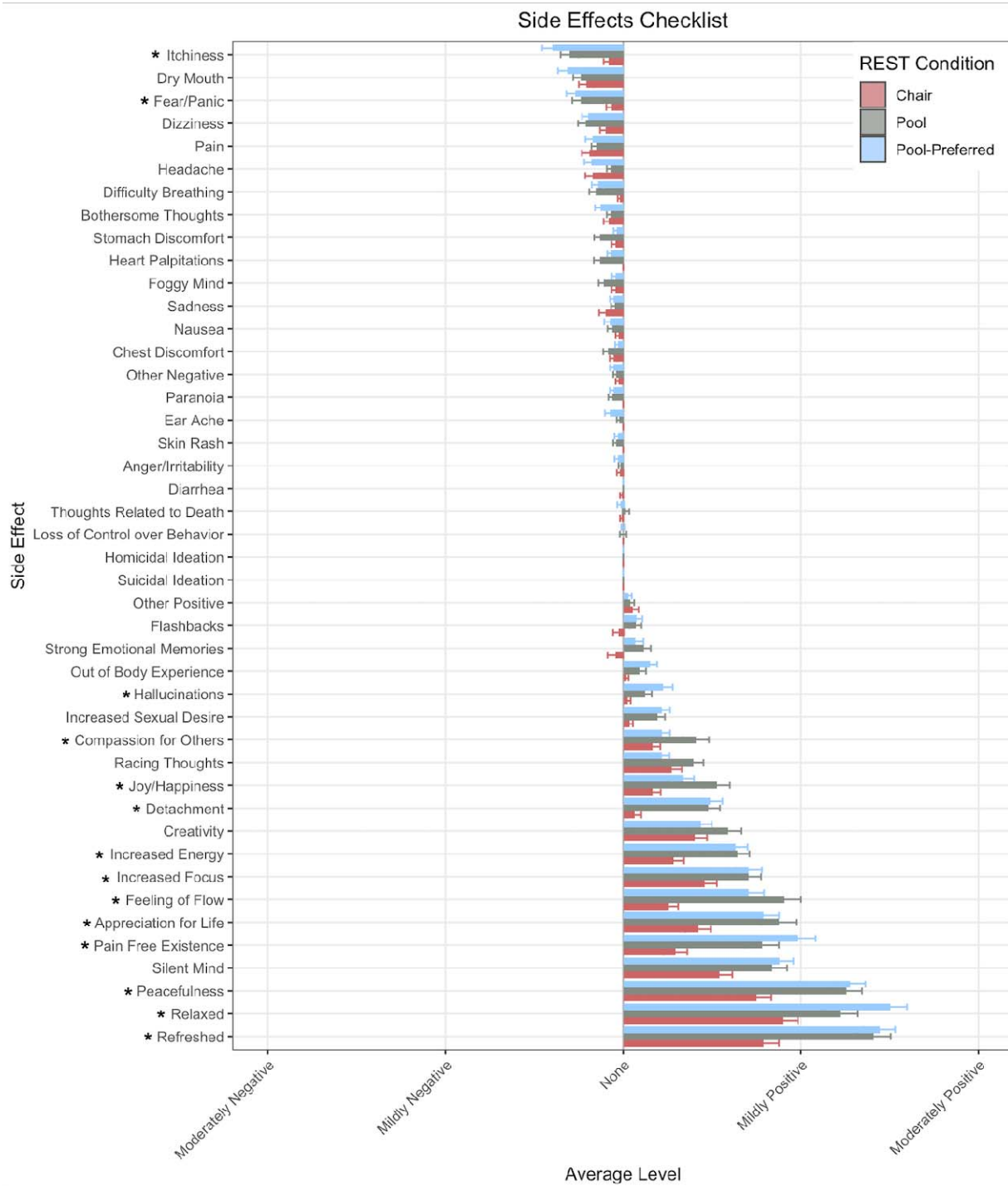
384

385 **Safety**

386 Four adverse events were recorded during the study. All were determined to be unrelated
387 to the study intervention. One participant in the chair-REST condition reported two separate
388 instances of migraines with nausea on the days of their first and second REST session. One
389 participant in the pool-REST condition who suffered from seasonal allergies reported an ear
390 infection four days after their third REST session. Finally, one participant in the pool-REST
391 condition reported a suicide attempt the night before their 6-week follow-up visit. The participant
392 was subsequently evaluated at a local psychiatric emergency department, where it was
393 determined that hospital admission was unwarranted.

394 Regarding the acutely experienced event profile, Figure 6 shows the average magnitude
395 rating for each event across the three assigned REST conditions. A qualitative inspection of the
396 data revealed that positive experiences were endorsed more commonly than negative ones and
397 were also rated at higher levels of intensity, with average intensity ratings in the mild-to-
398 moderate range for positive experiences and well-below mild for negative experiences. In the
399 linear mixed effects (LME) quantitative analysis of intensity ratings, we observed a significant
400 main effect of event ($F(43) = 153.61, p < .001, \eta_p^2 = .30$) and treatment condition ($F(2) = 3.51, p$
401 $= .04, \eta_p^2 = .09$), which was accounted for by the significant interaction between these variables
402 ($F(86) = 6.43, p < .0001, \eta_p^2 = .04$). Post-hoc comparisons suggested that feelings of intense
403 joy/happiness, increased energy, increased ability to focus/concentrate, serenity and
404 peacefulness, appreciation for life, refreshment, relaxation, silent mind, pain-free existence, and
405 feelings of flow were experienced more positively in the pool-REST and pool-REST preferred
406 conditions when compared to the chair-REST condition ($ps < .05$). Stronger positive ratings for
407 the pool-REST preferred condition were also observed for relaxation and pain-free existence
408 when compared to the pool-REST condition ($ps < .05$). The opposite trend was found for
409 feelings of flow, increased empathy and compassion for others, and joy/happiness, such that
410 participants in the pool-REST condition tended to rate these items more positively than their
411 pool-REST preferred counterparts ($ps < .05$). The pool-REST group also rated feelings of
412 empathy and compassion for others more positively than their chair-REST counterparts ($p < .01$).
413

414 **Figure 6. Events Checklist.** Note. Event anchors ranged from “Extremely Negative” to
415 “Extremely Positive” (anchors not shown). Asterisk (*) indicates significant group difference in
416 rating magnitude.



418 Regarding events that typically carry negative connotations, post-hoc comparisons
419 suggested that itchiness was experienced more negatively in the pool-REST and pool-REST
420 preferred conditions than the chair-REST condition ($ps < .05$). The pool-REST preferred
421 condition also rated feelings of intense fear and panic more negatively than the chair-REST
422 condition ($p = .045$). Interestingly, the pool-REST and pool-REST preferred conditions endorsed
423 experiencing feelings of detachment more positively than the chair-REST condition ($ps < .001$).
424 Stronger positive ratings were also observed in the pool-REST preferred condition than the
425 chair-REST condition for hallucinations ($p = .03$). Of note, the reports of hallucinations and
426 feelings of detachment occurred infrequently and tended to be described in neutral or positive
427 terms. For example, descriptions of hallucinations commonly mentioned visually experienced
428 colors and shapes, such as “*Colorful visions; shapes, people, and characters,*” “*Saw green,*
429 *crystal-like geometric shapes off and on (eyes were closed),*” and “*I experienced those colorful*
430 *flashes and dots similar to when you close your eyes and press lightly on your eyes.*” Feelings of
431 detachment were typically described using feelings of relaxation, weightlessness, and
432 disconnection from space and time, including: “*I felt weightless. I felt like nothing else mattered.*
433 *It was just me,*” “*Felt very relaxed like everything was far away,*” “*A similar dozing detachment*
434 *as when you’re half asleep for a really nice nap,*” and “*I felt like I was in my own world and the*
435 *real world was frozen in time.*”

436 The linear mixed model analysis also revealed a significant interaction between event and
437 visit ($F(214) = 1.40, p = .0001, \eta_p^2 = .02$). Specifically, post-hoc analyses showed a weakening
438 in the magnitude of positive events for all three interventions over the course of the study for the
439 following events: serenity and peacefulness, appreciation for life, refreshment, relaxation, silent
440 mind, pain-free existence, and feelings of flow ($ps < .05$).

442

443 ***Pool-REST Preferred***

444 When allowed to select the frequency of sessions, the pool-REST preferred participants
445 chose to float at a frequency of once every 12 days, on average ($SD = 9.33$), and for an average
446 float duration of 75 minutes ($M = 75.4 \pm 29.4$ minutes). Exploratory analyses indicated that
447 session frequency and session duration were not significantly associated with baseline measures
448 of anxiety, depression, or anxiety sensitivity ($ps > .05$).

449

450

Discussion

451 This study represents the first randomized controlled trial examining the feasibility,
452 tolerability, and safety of repeated sessions of floatation-REST in individuals with anxiety and
453 depression. We observed evidence of a favorable feasibility, tolerability, and safety profile for
454 the application of floatation-REST and chair-REST in this outpatient sample. Positive
455 experiences were endorsed more commonly than negative ones and were also rated at higher
456 levels of intensity, with no serious adverse events associated with any intervention. Taken
457 together, six sessions of floatation-REST appear feasible, well-tolerated, and safe in anxious and
458 depressed outpatient individuals.

459 Our primary outcome of adherence suggested that the feasibility of each form of REST,
460 indexed via adherence to the allocated six-sessions, was adequate, ranging from 85-89% for the
461 pool-REST conditions to 74% for the chair-REST condition. These levels of adherence are
462 comparable to traditional behavioral interventions for anxiety and depression, whose treatment
463 completion rates hover around 80% [16]. Each REST intervention was perceived to be
464 moderately credible, with participants having positive expectations for symptom improvement.

465 The observed levels of credibility and expectancy beliefs are also consistent with those typically
466 seen for other behavioral interventions such as exposure therapy (range of credibility beliefs =
467 5.95-7.47, range of expectancy beliefs = 50.50-67.90; [21, 25, 29]).

468 The low dropout rates in this behavioral intervention study provides additional evidence
469 that repeated sessions of REST are well-tolerated. Dropout rates in the post randomization
470 setting prior to intervention onset were lowest for the pool interventions (4% dropout for pool-
471 REST, and 0% dropout for pool-REST preferred), while the chair-REST pretreatment dropout
472 rate was the highest (16%) and similar to those observed to cognitive behavioral therapy
473 (dropout rates ranging from 11-21%, [15]). Dropout rates during the administration of the REST
474 intervention (32% for chair-REST, 24% for pool-REST, and 16% for pool-REST preferred) were
475 also comparable to rates seen in non-pharmacological and pharmacological interventions such as
476 cognitive behavioral therapy (19-36%, [15]), meditation (33-44%, [30]), acceptance and
477 commitment therapy (15%, [31]), and antidepressant medications (37-49%, [32]).

478 Using session duration as an additional proxy of intervention tolerability, we saw very
479 few individuals in the pool-REST and chair-REST conditions who had a prescribed session
480 duration (i.e., 60 minutes) terminate early, with the majority of individuals utilizing their full
481 time allotment. For the pool-REST preferred group, who was given greater flexibility in session
482 duration (i.e., allowed to float for up to two hours), we observed longer average session
483 durations. Although the preferred condition was given an additional 60 minutes, they tended to
484 float about 20 minutes longer than the prescribed session conditions on average. Moreover,
485 session duration was unrelated to symptom severity at baseline, indicating that individuals with
486 higher levels of anxiety, depression, or anxiety sensitivity were no more or less likely to utilize
487 longer durations (i.e., in a self-medicating or symptom-dependent fashion). Taken together, these

488 findings may suggest that a 60-minute float is a suitable duration for future clinical trials in a
489 clinically anxious and depressed sample. However, it remains to be determined whether there is
490 additional utility of more time (e.g., 75 minutes), or alternatively, whether similar effects could
491 be achieved with a shorter durations (e.g., 30 or 45 minutes).

492 The safety findings from this trial are consistent with previous single-session studies of
493 pool-REST and chair-REST which found few negative events and no serious adverse events [5,
494 7, 14]. Our study expands upon this work by showing a favorable safety profile across repeated
495 sessions of floatation-REST. We also demonstrated that positive experiences were endorsed
496 more commonly than negative ones, and at higher levels of intensity, in the mild-to-moderate
497 range. Importantly, while all three intervention groups consistently rated positive effects of the
498 intervention, the pool-REST groups tended to rate positive events more strongly, especially
499 regarding feelings of peace and tranquility. These findings provide support for the overall safety
500 of floatation-REST delivered in a pool or in a Zero Gravity chair setting. Moreover, the
501 comparable intensity ratings of many negative events but weaker ratings of positive events
502 within the chair-REST condition suggests that the chair is a suitable active comparator.

503 There were differential event profiles between the pool-REST conditions and the chair-
504 REST condition, such that participants in the pool conditions reported stronger feelings of
505 tranquility (e.g., refreshment, peacefulness, serenity) than those in the chair-REST condition and
506 tended to rate itchiness and fear/panic more negatively than their chair-REST counterparts. The
507 most common negative events associated with pool-REST were itchiness and dry mouth, which
508 is consistent with our previous pilot study [5], and may be related to the high salt concentration
509 in the pools. In addition, several experiences that traditionally carry negative connotations,
510 including audiovisual hallucinations and feelings of detachment, tended to be described in a

511 positive light in the pool conditions. We do not believe the hallucinations reported by
512 participants in this study reflect hallucinations in the true sense of the term and do not consider
513 them indicative of psychosis-spectrum symptoms. Rather, these visual and auditory sensations
514 may be the result of the brain ‘filling in the gaps,’ i.e., generating sensory representations in the
515 face of absent exteroceptive input to the nervous system. Finally, the repeated nature of this
516 intervention allowed for a thorough examination of event profiles over time. An attenuation in
517 the magnitude of several positive events was observed at later sessions for all three interventions,
518 raising the possibility that the increased familiarity may reduce the novelty of the intervention
519 and the magnitude of positive events.

520 This investigation had several limitations that must be acknowledged. First, four
521 individuals in the chair-REST condition and one participant in the pool-REST condition
522 withdrew from the study after randomized allocation to their respective intervention and did not
523 complete the CEQ. These dropouts may suggest the presence of unmet expectations, particularly
524 for the individuals allocated to the chair-REST condition given that the largest dropout occurred
525 in this group. Alternatively, pre-intervention anticipatory anxiety could have played a role in
526 withdrawal, although we did not receive such reports from participants. To avoid the limitation
527 of missing data in the future, subsequent studies should aim to collect the CEQ measure
528 immediately following randomization. Another limitation of the current study is the modest
529 sample size. While our sample size was consistent with those used in previous floatation-REST
530 trials, larger groups may be needed for an adequately powered survival analysis for the purposes
531 of tolerability assessment. As such, the current study may be underpowered to detect meaningful
532 group differences in dropout rate. We examined six-session feasibility of REST whereas prior
533 clinical trials have typically used more sessions (e.g., 12). Thus, the measurement of feasibility

534 and tolerability during the employment of a larger number of sessions may be advisable in future
535 trials. Additionally, most of our sample was comprised of Caucasian, highly educated females,
536 thereby limiting generalizability claims to the broader population. Finally, due to the fact that
537 participants were financially compensated for their participation, we did not examine structural
538 aspects of feasibility relevant to the real-world delivery of behavioral therapies, including
539 financial and time commitments that might otherwise be important for treatment engagement.

540 **Conclusion**

541 The findings from this clinical trial suggests that six sessions of REST in a chair or pool
542 environment are feasible, well-tolerated, and safe in clinically anxious and depressed outpatient
543 individuals. Larger randomized controlled trials evaluating markers of clinical efficacy are
544 warranted.

545

546 **Funding**

547 This research was supported by an award from the National Center for Complimentary and
548 Integrative Health (R34AT009889). The authors were also supported by the National Institute of
549 Mental Health (R01MH127225, K23MH112949 to SSK), National Institute of General Medical
550 Sciences Center Grant Award Number (1P20GM121312 to MPP, JSF, SSK), and The William
551 K. Warren Foundation. The funding sources had no role in the design and conduct of the study;
552 collection, management, analysis, and interpretation of the data; preparation, review, or approval
553 of the manuscript; or decision to submit the manuscript for publication.

554 **Author Contributions**

555 McKenna Garland: Writing—Original draft preparation, investigation, formal analysis,
556 visualization. Raminta Wilson: Investigation. Wesley Thompson: Writing—Review and editing.
557 Murray Stein: Writing—Review and editing. Martin Paulus: Writing—Review and editing,
558 supervision. Justin Feinstein: Conceptualization, methodology, resources, writing—review and
559 editing, supervision, project administration, funding acquisition. Sahib Khalsa:
560 Conceptualization, methodology, resources, writing—review and editing, supervision, project
561 administration, funding acquisition.

562 **Declaration of Conflicting Interests**

563 The authors declare that there are no conflicts of interests.

564 **Acknowledgments**

565 We would like to thank Henry Yeh, Jamie Rhudy, Emily Adamic, and Joel Greenshields for
566 consultation on coding and statistical matters. We would also like to acknowledge Laura
567 Garrison for her contributions to data collection. Finally, we would like to thank the custodial

568 staff at the Laureate Institute for Brain Research for their diligence in maintaining the floatation-
569 REST and chair-REST facilities.

570 **References**

- 571 1. Suedfeld P, Coren S. Perceptual isolation, sensory deprivation, and rest: Moving
572 introductory psychology texts out of the 1950s. *Canadian Psychology/Psychologie canadienne*.
573 1989;30(1):17.
- 574 2. Rossi AM. General methodological considerations. *Sensory deprivation: Fifteen years of*
575 *research*. 1969:16-46.
- 576 3. Lilly JC, Shurley JT. Experiments in solitude, in maximum achievable physical isolation
577 with water suspension, of intact healthy persons. *Psychophysiological aspects of space flight*.
578 1961:238-47.
- 579 4. Shurley JT. Profound experimental sensory isolation. *American Journal of Psychiatry*.
580 1960;117(6):539-45.
- 581 5. Feinstein JS, Khalsa SS, Yeh HW, Wohlrab C, Simmons WK, Stein MB, et al.
582 Examining the short-term anxiolytic and antidepressant effect of Floatation-REST. *PLoS One*.
583 2018;13(2):e0190292. Epub 20180202. doi: 10.1371/journal.pone.0190292. PubMed PMID:
584 29394251; PubMed Central PMCID: PMC5796691.
- 585 6. Al Zoubi O, Misaki M, Bodurka J, Kuplicki R, Wohlrab C, Schoenhals WA, et al. Taking
586 the body off the mind: Decreased functional connectivity between somatomotor and default-
587 mode networks following Floatation-REST. *Hum Brain Mapp*. 2021;42(10):3216-27. Epub
588 20210409. doi: 10.1002/hbm.25429. PubMed PMID: 33835628; PubMed Central PMCID:
589 PMC8193533.
- 590 7. Khalsa SS, Moseman SE, Yeh H-W, Upshaw V, Persac B, Breese E, et al. Reduced
591 environmental stimulation in anorexia nervosa: an early-phase clinical trial. *Frontiers in*
592 *psychology*. 2020:2534.

- 593 8. Solutions FT, LLC FO. State of the Float Industry Report. Float Tank Solutions; 2020.
- 594 9. Jonsson K, Kjellgren A. Promising effects of treatment with flotation-REST (restricted
595 environmental stimulation technique) as an intervention for generalized anxiety disorder (GAD):
596 a randomized controlled pilot trial. BMC complementary and alternative medicine. 2016;16(1):1-
597 12.
- 598 10. Bood SÅ, Sundequist U, Kjellgren A, Nordström G, Norlander T. Effects of flotation rest
599 (restricted environmental stimulation technique) on stress related muscle pain: are 33 flotation
600 sessions more effective than 12 sessions? Social Behavior and Personality: an international
601 journal. 2007;35(2):143-56.
- 602 11. Feinstein JS, Khalsa SS, Yeh H, Al Zoubi O, Arevian AC, Wohlrab C, et al. The
603 elicitation of relaxation and interoceptive awareness using floatation therapy in individuals with
604 high anxiety sensitivity. Biological psychiatry: cognitive neuroscience and neuroimaging.
605 2018;3(6):555-62.
- 606 12. Lann MA, Martin A. An unusual death involving a sensory deprivation tank. Journal of
607 forensic sciences. 2010;55(6):1638-40.
- 608 13. Norlander T, Kjellgren A, Archer T. The experience of flotation-REST as a function of
609 setting and previous experience of altered state of consciousness. Imagination, Cognition and
610 Personality. 2000;20(2):161-78.
- 611 14. Forgays DG, Belinson MJ. Is flotation isolation a relaxing environment? Journal of
612 Environmental Psychology. 1986;6(1):19-34.
- 613 15. Fernandez E, Salem D, Swift JK, Ramtahal N. Meta-analysis of dropout from cognitive
614 behavioral therapy: Magnitude, timing, and moderators. Journal of Consulting and Clinical
615 Psychology. 2015;83(6):1108.

- 616 16. Swift JK, Greenberg RP, Tompkins KA, Parkin SR. Treatment refusal and premature
617 termination in psychotherapy, pharmacotherapy, and their combination: A meta-analysis of head-
618 to-head comparisons. *Psychotherapy*. 2017;54(1):47.
- 619 17. Victor TA, Khalsa SS, Simmons WK, Feinstein JS, Savitz J, Aupperle RL, et al. Tulsa
620 1000: a naturalistic study protocol for multilevel assessment and outcome prediction in a large
621 psychiatric sample. *BMJ open*. 2018;8(1):e016620.
- 622 18. Campbell-Sills L, Norman SB, Craske MG, Sullivan G, Lang AJ, Chavira DA, et al.
623 Validation of a brief measure of anxiety-related severity and impairment: the Overall Anxiety
624 Severity and Impairment Scale (OASIS). *Journal of affective disorders*. 2009;112(1-3):92-101.
- 625 19. Taylor S, Zvolensky MJ, Cox BJ, Deacon B, Heimberg RG, Ledley DR, et al. Robust
626 dimensions of anxiety sensitivity: development and initial validation of the Anxiety Sensitivity
627 Index-3. *Psychological assessment*. 2007;19(2):176.
- 628 20. Kroenke K, Spitzer RL, Williams JB. The PHQ-9: validity of a brief depression severity
629 measure. *Journal of general internal medicine*. 2001;16(9):606-13.
- 630 21. Devilly GJ, Borkovec TD. Psychometric properties of the credibility/expectancy
631 questionnaire. *Journal of behavior therapy and experimental psychiatry*. 2000;31(2):73-86.
- 632 22. Harris PA, Taylor R, Thielke R, Payne J, Gonzalez N, Conde JG. Research electronic
633 data capture (REDCap)—a metadata-driven methodology and workflow process for providing
634 translational research informatics support. *Journal of biomedical informatics*. 2009;42(2):377-81.
- 635 23. Harris PA, Taylor R, Minor BL, Elliott V, Fernandez M, O'Neal L, et al. The REDCap
636 consortium: Building an international community of software platform partners. *Journal of*
637 *biomedical informatics*. 2019;95:103208.

- 638 24. Kazdin AE. Therapy outcome questions requiring control of credibility and treatment-
639 generated expectancies. *Behavior Therapy*. 1979;10(1):81-93.
- 640 25. Thompson-Hollands J, Bentley KH, Gallagher MW, Boswell JF, Barlow DH. Credibility
641 and outcome expectancy in the unified protocol: Relationship to outcomes. *Journal of*
642 *Experimental Psychopathology*. 2014;5(1):72-82.
- 643 26. Kaplan EL, Meier P. Nonparametric estimation from incomplete observations. *Journal of*
644 *the American statistical association*. 1958;53(282):457-81.
- 645 27. Team R. RStudio: Integrated Development for R. . Boston, MA: RStudio, PBC; 2020.
- 646 28. Sheehan D, Janavs J, Baker R, Harnett-Sheehan K, Knapp E, Sheehan M. Mini
647 international neuropsychiatric interview. Tampa: University of South Florida. 1994.
- 648 29. Arch JJ, Twohig MP, Deacon BJ, Landy LN, Bluett EJ. The credibility of exposure
649 therapy: Does the theoretical rationale matter? *Behaviour research and therapy*. 2015;72:81-92.
- 650 30. Krisanaprakornkit T, Sriraj W, Piyavhatkul N, Laopaiboon M. Meditation therapy for
651 anxiety disorders. *Cochrane Database of Systematic Reviews*. 2006;(1).
- 652 31. Ong CW, Lee EB, Twohig MP. A meta-analysis of dropout rates in acceptance and
653 commitment therapy. *Behaviour research and therapy*. 2018;104:14-33.
- 654 32. Machado M, Iskedjian M, Ruiz I, Einarson TR. Remission, dropouts, and adverse drug
655 reaction rates in major depressive disorder: a meta-analysis of head-to-head trials. *Current*
656 *medical research and opinion*. 2006;22(9):1825-37.
- 657