

# 1 Newborn Care Practices in Health Facilities of Nepal: A Further Analysis from 2 Nepal Health Facility Survey 2015 and 2021

3 *Achyut Raj Pandey<sup>1\*</sup>, Bikram Adhikari<sup>1</sup>, Bipul Lamichhane<sup>1</sup>, Bishnu Dulal<sup>1</sup>, Saugat Pratap KC<sup>1</sup>, Deepak Joshi*  
4 *<sup>1</sup>, Sushil Chandra Baral<sup>1</sup>*

## 5 6 **Affiliation**

7 <sup>1</sup> HERD International, Lalitpur, Nepal

8 **\*Correspondence:** [achyutrajpandey2014@gmail.com](mailto:achyutrajpandey2014@gmail.com)

## 9 10 **Abstract**

11 **Introduction:** Increased availability of Newborn care practices in health facilities (HFs) plays an  
12 important role in improving the survival and well-being of newborns. In this paper, we aimed to  
13 determine newborn care practices among HFs between 2015 and 2021, and associated factors among  
14 public and private HFs in Nepal.

15 **Methods:** We performed a secondary analysis of Nepal Health Facility Surveys 2015 and 2021. We  
16 summarized categorical variables with a weighted percent and 95% confidence interval (CI). We  
17 compared proportions using the z-test of proportion and reported differences in percentage points,  
18 95% CI, and p-value. We applied univariate and multivariable logistic regression analysis to determine  
19 the association of the availability of seven newborn care practices.

20 **Results:** The percentage of facilities with all seven newborn care practices was 50.5% (95% CI: 44.6,  
21 56.3) in 2015 and 83.7% (95%CI: 79.8, 87.0) in 2021 with an overall increase of 34.2 percent points  
22 (95% CI: 27.9, 38.7). The availability of all seven newborn care practices significantly increased from  
23 2015 to 2021 in each subcategory of the ecological region, all provinces except Madhesh, and all types  
24 of HFs except federal/provincial hospitals. In 2021, private hospitals had lower odds of having all  
25 seven newborn care practices compared to federal/provincial hospitals (AOR= 0.17, 95% CI: 0.07,  
26 0.04). Similarly, in 2021, Sudurpaschim province had 2.87 (95% CI: 1.06, 8.31) higher odds of having  
27 all seven newborn care practices compared to Koshi province. In 2021, newborn care practices did  
28 not differ significantly based on ecological belt, quality assurance activities, external supervision,  
29 delivery service-related training and frequency of HF meeting.

30 **Conclusion:** There was a significant increase in the availability of seven newborn care practices  
31 between 2015 and 2021 and in each category of ecological region, province, and type of facility. The  
32 type of facility and provinces were associated with the availability of newborn care practices among  
33 HFs in Nepal.

34 **Keywords:** *facility survey, newborn care practices, Nepal,*

## 35 Introduction

36 The first four weeks of life are still the most important for a child's survival. Nearly 2.3 million children  
37 lost their lives in the first month of birth in 2021, which equates to about 6,400 fatalities every day [1].  
38 Sub-Saharan Africa and Central and Southern Asia have the greatest mortality rates, while progress  
39 toward the worldwide 2030 objectives varies at different rates in all of these nations [2]. From 1990  
40 to 2020, the worldwide Neonatal Mortality Rate (NMR) fell by more than 50%, from 37 to 17 deaths  
41 per 1,000 live births [1]. With a relatively slower pace of decline in NMR, the proportion of neonatal  
42 deaths out of total under 5 deaths increased from 39% in 2000 to 48% in 2019 [3, 4].

43 While countries around the globe are struggling to reduce the newborn mortality rate to 12 or fewer  
44 deaths per 1000 live births by 2030 as a part of Sustainable Development Goal (SDG) [5], the alarming  
45 and avoidable burden of newborn deaths raise concerns about SDGs' success as over 60 countries are  
46 predicted to fall short of the goal for newborn mortality [1]. If NMR continues to decline in the current  
47 rate, there will be 13.9 newborn fatalities per 1,000 live births by 2030 [6], which is still more than the  
48 ideal NMR that can be achieved with the medical and technological advancements at hand. [6]  
49 According to an estimate based on predictions of the global burden of disease, the ideal worldwide  
50 NMR that could be achieved through medical and technological advancements is 0.80 deaths per 1,000  
51 live births [3].

52 In concordance with global pattern, in Nepal, the decline in NMR has been relatively slow compared  
53 to the decline in under-five mortality rates. Between 2001 to 2022, under-5 mortality rates declined  
54 from 91 per 1000 live births to 33 per 100 live births in 2021, demonstrating a decline of approximately  
55 64% in a period of two decades. [7, 8]. However, in the same period, NMR declined by 46% from 39  
56 newborn deaths per 1000 live births in 2001 to 21 newborn deaths per 1000 live birth in 2022[7, 8].  
57 By achieving the SDG, Nepal will avoid 5,935 impairments and save an additional 27,116 neonatal  
58 lives. Additionally, it has been demonstrated that programs aiming at improving maternal and newborn  
59 health are economically effective, with every dollar spent on newborn health yielding a return of \$6  
60 [9].

61 Newborns all over the world have the right to receive high-quality and essential newborn care which  
62 entails immediate medical attention after delivery and continued care throughout the newborn phase  
63 at the health facility level as well as at home [10]. It includes immediate care at birth, thermal care,  
64 resuscitation when needed, support for breast milk feeding, nurturing care, infection prevention,

65 assessment of health problems, recognition and response to danger signs, and timely and safe referral  
66 when needed. Immediate care at birth involves delayed cord clamping, thorough drying, assessment  
67 of breathing, skin-to-skin contact, and early initiation of breastfeeding. Essential newborn care is  
68 necessary both in the health facility and at home to ensure the well-being and survival of newborns  
69 [10]. While the progress on newborn health was challenged by COVID-19 epidemic, rising poverty,  
70 and worsening humanitarian situations are adding to the strain on already overburdened healthcare  
71 institutions [2], health system in Nepal underwent a transformation from unitary to federal health  
72 system with substantial changes in health care delivery mechanism and the way health services are  
73 organized [11, 12]. In this context, we attempted to analyze the newborn care service practices,  
74 variation by province and ecological belts, change from 2015 to 2021, and factors associated with the  
75 availability of newborn care practices.

## 76 **Methods**

### 77 **Study design**

78 We used data from two nationally representative Nepal Health Facility Survey (NHFS) conducted in the year  
79 2015 and 2021 for secondary data analysis. NHFS 2015 and NHFS 2021 were implemented by NEW Era, a  
80 national research firm with the support from Ministry of Health and Population (MOHP) and technical support  
81 from ICF International.

82 Nepal's healthcare system operates at three levels: federal, provincial, and local. The Ministry of Health and  
83 Population (MoHP) at federal level oversees policy formulation, planning, coordination, and organization of  
84 healthcare at all levels. The MoHP regulates services and implements healthcare initiatives. The local health  
85 system comprises various facilities such as primary hospitals, PHCCs, health posts, basic health care centers,  
86 urban health clinics, community health units, and community-level health facilities, including community health  
87 clinics, primary health outreach clinics, and immunization clinics. Health posts or basic health service centers  
88 serve as the initial point of contact for basic health services. Each local level is supposed to have a local hospital  
89 as per policy provision after federalization process, which are currently being constructed. There are provincial  
90 and federal level services particularly secondary and tertiary level service in Nepalese context.

91 Each level beyond health posts serves as a referral point within a network that extends from PHCCs to primary  
92 and secondary level hospitals. Private health facilities, including hospitals, clinics, and pharmacies, deliver basic  
93 health services up to tertiary care.

### 94 **Sample and sampling techniques**

95 In NHFS 2015, a total of 1000 HFs were selected out of 4719 eligible HFs using a random stratified sampling  
96 technique. A total of 963 health facilities (HFs) were included in the study after eliminating 8 duplicate HFs  
97 and accounting for 29 HFs that did not participate due to refusal, closure, or inaccessibility caused by poor  
98 infrastructure. NHFS 2021 utilized a stratified random sampling method to select 1633 health facilities from a  
99 pool of 5681 eligible facilities. Equal probability systematic sampling was employed, with sample allocation  
100 considering facility type within each province to achieve stratification. Out of the 1633 selected HFs, 97% (1576  
101 facilities) successfully participated in the survey, while 2% were non-functional, 1% were unreachable, and 0.1%  
102 refused to take part in the study. In this study, we used data of 621 (weighted: 457) and 786 (weighted: 804)  
103 HFs offering normal vaginal delivery services from NHFS 2015 and NHFS 2021 respectively.

104

### 105 **Data collection**

106 The NHFS 2015 data collection took place from April to November 2015, while the NHFS 2021 data collection  
107 occurred from January to September 2021. The data collection was carried out using four main data collection  
108 tools- a) facility inventory questionnaire, b) health provider interview questionnaire, c) observation for maternal

109 and newborn care, and d) Exit interview questionnaire. We used data from the facility inventory questionnaire  
110 focusing on newborn care practices in this study.

111

## 112 **Variables:**

### 113 **Outcome variable**

114 Those facilities reporting presence of all seven newborn care practices – delivery to the abdomen, drying and  
115 wrapping, kangaroo mother care (KMC), initiation of breastfeeding within the first hour, routine complete  
116 head-to-toe examination of the newborn before discharge, applying chlorhexidine gel to umbilical cord stump  
117 and weighting the newborn immediately upon delivery were considered to have all newborn care practices.

118

### 119 **Independent variables**

120 The independent variables included ecological region (hill/mountain/terai), location of facility (rural/urban),  
121 province (Koshi / Madhesh / Bagmati / Gandaki /Lumbini / Karnali / Sudurpaschim), type of facility (federal,  
122 provincial hospital / peripheral facilities / private hospital). The hospitals under federal or provincial  
123 government were classified as federal or provincial hospitals, facilities under local governments which include  
124 local hospitals, primary health care centers, and health posts were classified as local HFs, and the hospitals  
125 owned by private sectors were classified as private hospitals. For frequency of HF meetings, the HFs stating  
126 “no” for routine management/administrative meetings were classified as “none”, those stating, “monthly or  
127 more often” were classified as “monthly” and those stating, “irregular or every 2-6 months” were classified as  
128 “sometimes”.

129

### 130 **Statistical analysis**

131 We used R program 4.2.0 for data cleaning and statistical analysis. We performed a weighted analysis to address  
132 complex survey design using the “survey” package. In the descriptive analysis, we summarized categorical  
133 variables with weighted percent and 95% confidence interval. We compared proportions between 2015 and  
134 2021 using the z-test of proportion and reported differences in percentage points, 95% CI, and p-value. In  
135 inferential analysis, we applied univariate and multivariable logistic regression analysis to determine the  
136 association of availability of seven newborn care practices with the province, type of HFs and ecological region.  
137 The results of regression analysis were reported with crude and adjusted odds ratio along with their 95% CI  
138 and p-value. We considered a p-value less than 0.05 as statistically significant throughout this paper.

139

### 140 **Ethical approval**

141 The study involves a secondary analysis of NHFS 2015 and NHFS 2021 so, we did not seek ethical approval  
142 for this study. In the original survey NHFS 2015 and 2021, ethical clearance was obtained from the Ethical  
143 Review Board of Nepal Health Research Council and ICF International.

144 **Results**

145 The distribution of HFs offering normal vaginal delivery services by ecological belt and province between  
146 NHFS 2015 and 2021 were similar. In 2021, 61.4% facilities were from hilly region, 17.0% facilities were from  
147 mountain region, and 21.7% facilities were from terai region whereas in NHFS 2015, 60.4% facilities were from  
148 hill, 14.8% were from mountain and 24.8% were from Terai in 2015. In 2021, 16.7% of facilities were from  
149 Koshi, 7.6% were from Madhesh, 18.8% were from Bagmati, 11.4% were from Gandaki, 16.9% were from  
150 Lumbini, 12.4% were from Karnali and 16.1% were from Sudurpaschim. Figure 1 also shows distribution of  
151 HFs in NHFS 2015 and NHFS 2021. The representation of HFs between the two surveys looks comparable.

152

153 **[Figure-1 is here]**

154 *Figure 1: Distribution of facilities in NHFS 2015 and NHFS 2021*

155

156 Table 1 presents the comparison of newborn care practices among HFs offering normal vaginal  
157 delivery services between NHFS 2015 and NHFS 2021. The availability of all seven newborn care  
158 practices was 49.5% (95% CI: 43.7, 55.4) in 2015 and 83.7% (95%CI: 79.8, 87.0) in 2021 with an  
159 overall increase of 34.2 percentage points (95%CI: 27.9, 38.7). In 2021, more than 90% facilities reported  
160 practicing delivery to the abdomen (96.1%, 95% CI: 93.7, 97.7), drying and wrapping of newborns  
161 (99.7%, 95% CI: 98.3, 99.9), early initiation of breastfeeding (99.4%, 95% CI: 98.1, 99.8), routine head-  
162 to-toe examination (97.4%, 95% CI: 95.3, 98.6), applying chlorhexidine gel to umbilical cord stump  
163 (96.5% 95% CI: 94.9, 97.6) and weighing the newborn immediately upon delivery (99.0%, 95% CI:  
164 96.8, 99.7).

165 The practice of applying chlorhexidine gel to umbilical cord stump increased from 63.6% (95% CI:  
166 57.8, 69.0) in 2015 to 96.5% (95% CI: 94.9, 97.6) in 2021 with a total change of 32.4 percentage points  
167 (95% CI: 28.2, 37.7) and was the newborn care practice with highest percentage point improvement.  
168 The practice of drying or wrapping newborns, routine head-to-toe examination of newborns, weighing  
169 newborns immediately after delivery and Vitamin K use improved positively between 2015 to 2021.  
170 There were no significant changes in the practices of initiation of breastfeeding within the first hour,  
171 Kangaroo Mother Care (KMC), and BCG vaccination between 2015 and 2021.

172 The details of the comparison of availability of all seven newborn care practices NHFS 2015 and  
 173 NHFS 2021 for different ecological belts and seven provinces stratified by type of HF's is present in  
 174 the **supplementary table 1**.

175 *Table 1: Comparison of availability of newborn care practices among HF's offering normal vaginal delivery between NHFS 2015 and NHFS 2021*

Newborn care practices	2015	2022	Change
	% (95% CI)	% (95% CI)	% (95% CI)
Delivery to the abdomen (skin to skin)	90.7 (86.5, 93.6)	96.1 (93.7, 97.7)	5.4 (2.4, 8.7)
Drying and wrapping newborns to keep warm	97.3 (94.4, 98.8)	99.7 (98.3, 99.9)	2.4 (0.6, 4.0)
Initiation of breastfeeding within the first hour	98.9 (96.6, 99.6)	99.4 (98.1, 99.8)	0.5 (-0.7, 1.8)
Routine complete (head-to-toe) examination of newborns before	94.3 (90.7, 96.6)	97.4 (95.3, 98.6)	3.1 (0.5, 5.6)
Applying chlorhexidine gel to umbilical cord stump	63.6 (57.8, 69.0)	96.5 (94.9, 97.6)	32.9 (28.2, 37.7)
Kangaroo Mother care	91.4 (87.7, 94.1)	89.7 (86.2, 92.3)	-1.7 (-5.2, 1.7)
Weighing the newborn immediately upon delivery	95.5 (92.3, 97.5)	99.0 (96.8, 99.7)	3.5 (1.3, 5.7)
Vitamin K	9.8 (7.5, 12.7)	19.3 (15.9, 23.2)	9.5 (5.4, 13.5)
BCG	11.8 (8.8, 15.8)	10 (7.3, 13.5)	-1.8 (-5.6, 2.0)
Tetracycline Eye Ointment	12.9 (9.5, 17.4)	6.0 (4.1, 8.9)	-6.9 (-10.5, -3.2)
Availability of all 10 practices	0.2 (0.1, 0.6)	0.8 (0.4, 1.9)	0.6 (-0.4, 1.5)
Availability of first 7 practices	50.5 (44.6, 56.3)	83.7 (79.8, 87.0)	34.2 (27.9, 38.7)

176  
 177 Disaggregated by type of facilities, use of Vitamin K and application of chlorhexidine were the two indicators  
 178 that improved most between 2015 and 2022 in federal and provincial level hospitals. Use of Vitamin K  
 179 increased from 20.5% (95% CI: 13.5, 29.8) in 2015 to 65.1% (95% CI: 54.5, 74.4) in 2022 demonstrating 44.6  
 180 percentage points improvement. Similarly, in local level facilities, the use of chlorhexidine was the indicator that  
 181 improved most increasing from 67.6% (95% CI: 61.0, 73.5) to 98.7% (95% CI: 96.8, 99.4) demonstrating 31.1  
 182 percentage points improvement. In private hospitals, the proportion of facilities applying chlorhexidine gel to  
 183 umbilical cord stump increased from 25.4% (95% CI: 16.2, 37.4) to 72.3% (95% CI: 62.4, 80.4) with a total of  
 184 46.9 percentage points improvement. [Table 2]



185 *Table 2: Newborn care practices by facility type*

Newborn care practices	Federal hospitals		Local facilities		Private hospitals	
	2015	2021	2015	2021	2015	2021
Delivery to the abdomen (skin to skin)	87.8 (79.5, 93.0)	94.4 (87.0, 97.7)	91.5 (86.8, 94.7)	96.7 (94.0, 98.3)	84.4 (71.3, 92.2)	89.9 (79.4, 95.4)
Drying and wrapping newborns to keep warm	100.0	98.9 (92.2, 99.8)	97.2 (93.7, 98.8)	100.0	97.0 (85.0, 99.5)	95.9 (79.6, 99.3)
Initiation of breastfeeding within the first hour	99.0 (92.9, 99.9)	100.0	99.1 (96.1, 99.8)	99.7 (98.5, 99.9)	96.9 (85.0, 99.4)	95.3 (80.7, 99.0)
Routine complete(head-to-toe) examination of newborns before	99.0 (92.9, 99.9)	95.5 (88.5, 98.3)	94.2 (89.9, 96.7)	97.9 (95.4, 99.0)	94.0 (81.8, 98.2)	93.0 (81.2, 97.6)
Applying chlorhexidine gel to umbilical cord stump	70.4 (60.4, 78.7)	93.3 (85.7, 97.0)	67.6 (61.0, 73.5)	98.7 (96.8, 99.4)	25.4 (16.2, 37.4)	72.3 (62.4, 80.4)
Kangaroo Mother care	94.8 (88.0, 97.9)	95.5 (88.4, 98.3)	92.4 (88.1, 95.2)	90.3 (86.5, 93.2)	81.6 (69.1, 89.8)	79.9 (70.0, 87.1)
Weighing the newborn immediately upon delivery	100.0	100.0	95.3 (91.6, 97.5)	99.2 (96.6, 99.8)	95.3 (82.7, 98.8)	96.4 (78.3, 99.5)
Vitamin K	20.5 (13.5, 29.8)	65.1 (54.5, 74.4)	2.4 (1.2, 4.7)	12.5 (9.2, 16.8)	70.4 (57.0, 80.9)	79.5 (69.6, 86.8)
BCG	31.7 (23.1, 41.7)	22.5 (14.9, 32.5)	9.7 (6.5, 14.2)	8.8 (6.0, 12.7)	22.0 (13.2, 34.2)	19.0 (11.1, 30.7)
Tetracycline Eye Ointment	15.3 (9.4, 24.0)	10.1 (5.3, 18.5)	14.0 (10.1, 19.1)	5.5 (3.3, 8.8)	2.9 (1.2, 6.5)	11.2 (7.1, 17.4)
Availability of all 10 practices	3.1 (1.0, 9.2)	2.2 (0.5, 8.7)	0.1 (0.0, 0.4)	0.7 (0.2, 2.0)	0.5 (0.1, 3.6)	1.7 (0.5, 5.3)
Availability of first 7 practices	60.2 (50.0, 69.5)	82.1 (72.5, 88.8)	53.4 (46.7, 59.9)	85.8 (81.4, 89.3)	20.5 (12.4, 31.9)	60.4 (50.2, 69.7)

186

187 Figure 2 shows the proportion of facilities reporting seven newborn care practices in terms of scores from one  
 188 to seven. A score of one means that the facility has one out of seven newborn care practices while seven

189 indicates that the facility has all seven newborn care practices. In 2021, 83.7% of HF's reported having all seven  
 190 newborn care practices which is an increase from 50.5% in 2015. Disaggregated by facility type, the proportion  
 191 of facilities reporting all seven newborn care practices increased from 60.2% in 2015 to 82.1% in 2021 in federal  
 192 or provincial level hospitals, 53.4% in 2015 to 85.8% in 2022 in local HF's and, from 20.5% in 2015 to 60.4%  
 193 in 2022 in private hospitals.

194

195 **[Figure 2 is here]**

196 *Figure 2: Comparison of availability newborn care practices score between NHFS 2015 and NHFS 2021*

197 Among ecological belts, the hill region witnessed the highest percentage point improvement in the practice of  
 198 all seven newborn signal functions. In the hilly region, the proportion of facilities that reported practicing all  
 199 seven newborn care practices increased from 46.6 % (95% CI: 38.7, 54.7) in 2015 to 86.1 % (95% CI: 81.1, 89.9) in  
 200 2021 demonstrating a change of 39.5 percentage points (95% CI: 32.5, 46.4). Among provinces,  
 201 improvement was seen in Karnali and Bagmati Province. In Karnali province, percentage of facilities with all  
 202 newborn care practices increased from 33.0% (95% CI: 19.0,50.7) in 2015 to 85.9% (95% CI: 74.9, 92.5) in  
 203 2021 demonstrating a change of 52.9 percentage points (95% CI: 37.6, 68.2). Similarly, In Bagmati province,  
 204 the percentage of facilities with all seven newborn care practices improved from 36.9% (95% CI: 25.7, 50.0) in  
 205 2015 to 89.7% (95% CI: 80.6, 94.8) in 2021 demonstrating a change of 52.8 percentage points (95% CI: 40.3,  
 206 65.2)

207 *Table 3: Comparison of Availability of all seven newborn care practices between 2015 and 2021 by ecological region, province, and type of facility*

Characteristics	NHFS 2015		NHFS 2021		Change, 95% CI	P value
	n	% (95%CI)	n	% (95%CI)		
<b>Ecological region</b>						
Hill	276	46.6(38.7, 54.7)	493	86.1 (81.1, 89.9)	39.5 (32.5, 46.4)	<0.001
Mountain	68	53.5(40.4, 66.2)	136	83.2 (71.6, 90.7)	29.7 (15.1, 44.2)	<0.001
Terai	114	58.0(47.8, 67.5)	174	77.5 (68.0, 84.8)	19.5 (7.8, 31.2)	0.001
<b>Province</b>						
Koshi	78	53.6 (39.9,66.7)	134	76.6(64.4, 85.6)	23 (8.8, 37.3)	0.001
Madhesh	39	58.3(40.5,74.1)	61	74.7 (55.1, 87.7)	16.4 (-4.5, 37.4)	0.131
Bagmati	82	36.9 (25.7, 50.0)	151	89.7 (80.6, 94.8)	52.8 (40.3, 65.2)	<0.001
Gandaki	68	50.2(32.5, 67.9)	92	68.1 (52.5, 80.5)	17.9 (1.3, 34.4)	0.034
Lumbini	65	62.2(47.5, 74.9)	136	89.3 (79.3, 94.8)	27.1 (13.2, 41.1)	<0.001
Karnali	57	33.0(19.0,50.7)	100	85.9 (74.9, 92.5)	52.9 (37.6, 68.2)	<0.001
Sudurpaschim	67	62.6(48.2,75.1)	130	91.9 (83.6, 96.2)	29.3 (15.7, 42.9)	<0.001
<b>Type of facility</b>						
Federal/Provincial	20	60.2(50.1,69.5)	25	82.1(72.6, 88.8)	21.9 (-8.8, 52.3)	0.196
Local HF's	392	53.4(46.7,59.9)	718	85.8(81.4, 89.3)	32.4 (26.7, 38.2)	<0.001
Private Hospitals	45	20.5(12.5,31.8)	61	60.4(50.2, 69.7)	9.9 (20.9, 58.8)	<0.001

208 In multivariate analysis in Table 5, the odds of availability of all newborn care practices in the year 2015 was  
209 0.17 (95% CI: 0.07, 0.04; p-value= $<0.001$ ) times in private hospitals compared with federal/provincial  
210 hospitals, 2.45 (95% CI: 1.04, 5.76, p-value: 0.040) times in HFs having health facility meeting for sometimes  
211 and 2.1 (95% CI: 1.03, 7.99, p-value:0.044) times in facilities having monthly health facility meeting compared  
212 to HFs with no health facility meeting. The odds of having all seven newborn care practices were 2.87 (95%  
213 CI: 1.06, 8.31; p-value: 0.038) times in Sudurpaschim province compared to Koshi. Similarly, the odds of having  
214 all seven newborn care practices were 0.26 (0.11, 0.63; p-value=0.003) times in private facilities compared to  
215 federal/provincial hospitals

216 Table 4: Association of factors with availability of all newborn care practices except BCG, tetracycline, and Vitamin-K

Characteristic	2015				2021			
	Unadjusted		Adjusted		Unadjusted		Adjusted	
	OR (95%CI)	p-value	OR (95% CI)	p-value	OR (95%CI)	p-value	OR (95% CI)	p-value
<b>Ecological Region</b>								
Hill	Ref		Ref		Ref		Ref	
Mountain	1.32 (0.71, 2.44)	0.378	1.45 (0.75, 2.79)	0.266	0.8 (0.37, 1.72)	0.572	0.64 (0.26, 1.54)	0.316
Terai	1.58 (0.94, 2.66)	0.086	1.55 (0.78, 3.07)	0.213	0.56 (0.30, 1.02)	0.058	0.59 (0.26, 1.34)	0.210
<b>Province</b>								
Koshi	Ref		Ref		Ref		Ref	
Madhesh	1.21 (0.49, 2.96)	0.678	0.96 (0.35, 2.68)	0.945	0.9 (0.32, 2.57)	0.843	1.2 (0.37, 3.92)	0.763
Bagmati	0.51 (0.24, 1.09)	0.081	0.56 (0.24, 1.31)	0.183	<b>2.65 (1.03, 6.79)</b>	<b>0.042</b>	2.53 (0.93, 6.90)	0.069
Gandaki	0.87 (0.35, 2.17)	0.771	0.88 (0.33, 2.35)	0.804	0.65 (0.27, 1.57)	0.336	0.46 (0.18, 1.22)	0.119
Lumbini	1.42 (0.64, 3.18)	0.391	1.41 (0.59, 3.39)	0.441	<b>2.54 (0.96, 6.73)</b>	<b>0.060</b>	2.22 (0.80, 6.14)	0.125
Karnali	0.43 (0.17, 1.06)	0.065	0.41 (0.16, 1.03)	0.058	1.85 (0.74, 4.64)	0.187	1.42 (0.52, 3.92)	0.497
Sudurpaschim	1.45 (0.65, 3.22)	0.362	1.26 (0.55, 2.87)	0.586	<b>3.45 (1.28, 9.29)</b>	<b>0.014</b>	<b>2.87 (1.03, 7.99)</b>	<b>0.044</b>
<b>Type of Facility</b>								
Federal/Provincial hospital	Ref		Ref		Ref		Ref	
Local level facilities	0.76 (0.47, 1.23)	0.263	0.81 (0.47, 1.42)	0.469	1.32 (0.70, 2.48)	0.393	1.09 (0.53, 2.26)	0.811
Private Hospital	<b>0.17 (0.08, 0.35)</b>	<b>&lt;0.001</b>	<b>0.17 (0.07, 0.40)</b>	<b>&lt;0.001</b>	<b>0.33 (0.17, 0.66)</b>	<b>0.002</b>	<b>0.26 (0.11, 0.63)</b>	<b>0.003</b>
<b>Quality assurance activities</b>								
Not Performed	Ref		Ref		Ref		Ref	
Performed	0.7 (0.42, 1.19)	0.189	0.57 (0.31, 1.03)	0.062	1.1 (0.61, 1.98)	0.75	1.01 (0.52, 1.94)	0.983
<b>External supervision</b>								
No	Ref		Ref		Ref		Ref	
Yes	1.41 (0.83, 2.41)	0.207	1.15 (0.65, 2.05)	0.626	1.55 (0.90, 2.68)	0.112	1.42 (0.78, 2.57)	0.248
<b>Provider with training on delivery</b>								
No staff with training	Ref		Ref		Ref		Ref	
At least one staff with training	<b>1.78 (1.08, 2.91)</b>	<b>0.023</b>	1.4 (0.83, 2.36)	0.207	0.88 (0.48, 1.60)	0.666	0.69 (0.35, 1.36)	0.285
<b>Health facility meeting frequency</b>								

Characteristic	2015				2021			
	Unadjusted		Adjusted		Unadjusted		Adjusted	
	OR (95%CI)	p-value	OR (95% CI)	p-value	OR (95%CI)	p-value	OR (95% CI)	p-value
None	Ref		Ref		Ref		Ref	
Sometimes	<b>2.28 (1.00, 5.18)</b>	<b>0.049</b>	<b>2.45 (1.04, 5.76)</b>	<b>0.040</b>	1.53 (0.59, 3.98)	0.379	1.39 (0.50, 3.87)	0.533
Monthly	<b>2.21 (1.19, 4.09)</b>	<b>0.012</b>	<b>2.1 (1.09, 4.04)</b>	<b>0.026</b>	1.44 (0.65, 3.19)	0.371	1.36 (0.58, 3.21)	0.477
OR = Odds Ratio, CI = Confidence Interval								

217

218 **Discussion:**

219 The availability of all newborn care practices has increased except kangaroo mother care between 2015  
220 and 2021. The availability of seven newborn care practices increased to 84% in 2021 from 50% in  
221 2015 with an overall increase of 34 percentage points. In 2021 and 2015, private hospitals had lower odds of  
222 having all seven newborn care practices compared to federal/provincial hospitals. In 2021,  
223 Sudurpaschim province had 3 times higher odds of having all seven newborn care practices compared  
224 to Koshi province. Availability of seven newborn care practices did not differ significantly based on  
225 ecological belt, quality assurance activities, external supervision, delivery service-related training and  
226 frequency of HF meeting.

227 Furthermore, HFs that held meetings on a monthly or occasional basis were found to have higher  
228 odds of having all seven practices. This finding underscores the need for regular collaboration and  
229 communication among health facility staff to promote the availability of essential newborn care  
230 practices.

231 In the regression model, with reference to Koshi province, Sudurpaschim province had almost 3-fold  
232 higher odds of practicing all seven essential newborn care practices. Between 2015 to 2019, the  
233 proportion of facilities practicing all seven essential newborn care practices increased by 29%. Notable  
234 positive changes in coverage of essential newborn care practices in Sudurpaschim province could be  
235 because of the higher priority placed in the health sector compared to other provinces. For example,  
236 the per capita spending on health increased from 607 per capita to 2941 per capita in Sudurpaschim  
237 province demonstrating approximately 3.8 folds increase while it increased from 1821 to 3432 at the  
238 national level which reflects around 88% increase in the same period [7].

239 The proportion of facilities performing all 7 signal functions for newborns increased from 50% to  
240 84% with almost 34 percentage points increase. This progress has been driven by an increase in  
241 coverage of increase in the proportion of HFs applying chlorhexidine gel to umbilical cord stump  
242 which increased from 64% to 97%, with almost 33 percentage points increase in the period. Based on  
243 the assessment conducted in 10 districts, the government of Nepal decided to scale up the  
244 chlorhexidine programme to 41 districts by 2014 [13]. In the first phase of chlorhexidine programme  
245 between October 2011 and September 2014, 49 applications of chlorhexidine was implemented in 49  
246 districts which were then gradually scaled up throughout the country after October 2014.[14] By Mid  
247 of 2016, 58 districts were implementing chlorhexidine at health facility and community levels by mid-

248 2016 which has not been scaled up throughout the country [13, 15]. The jump in the proportion of  
249 HF's applying chlorhexidine gel to the umbilical cord stump could be because of policy changes or the  
250 decision of the government of Nepal to scale up the programme throughout the country.

251 Despite the high importance placed on the KMC, the proportion of facilities practicing KMC declined  
252 from 61% to 86% between 2015 to 2021. The KMC approach encompasses several interventions,  
253 such as continuous and early skin-to-skin contact, assistance with breastfeeding, early hospital  
254 discharge, and supportive care for stable neonates. Implementing this care package in hospitals for  
255 preterm neonates weighing less than 2000 g has been identified to decrease the risk of neonatal  
256 mortality by 51% [16], hypothermia by 77% [17], and also can shorten the duration of hospital stay.  
257 Although 86% of facilities reported adopting KMC, the coverage seems to decline further when it is  
258 captured at population level as all newborns delivered or visiting facilities with KMC may not receive  
259 the service. Multiple Indicators Cluster Survey in 2019 reported that the proportion of babies receiving  
260 KMC service was a cost-effective intervention to care for stable preterm/low birth weight (LBW)  
261 babies that is being implemented by the Government of Nepal as special care for small and/or sick  
262 new-born. Multiple Indicators Cluster Survey in 2019 reported that the proportion of babies receiving  
263 KMC service was a cost-effective intervention to care for stable preterm/low birth weight (LBW)  
264 babies that is being implemented by the Government of Nepal as special care for small and/or sick  
265 new-born. Although skin –to-skin contact has been part of different programs/ training packages such  
266 as Community-Based Integrated Management of Neonatal and Childhood Illnesses (CB-IMNCI),  
267 Facility-Based Integrated Management of Neonatal and Childhood Illnesses (FB-IMNCI), Skilled  
268 Birth Attendants (SBA) training and Comprehensive level-II new-born care, a full-fledged KMC  
269 program was rolled out in the year 2021 [13].

270 Despite 30 percentage point increment in proportion of facilities with all seven signal functions  
271 available, the latest evidence from Nepal Demographic and Health Survey (NDHS) 2022 show that  
272 NMR has remained stagnant at 21 per 100,000 live births between 2016 to 2021[7, 15]. As discussed  
273 above, this might be because chlorhexidine has substantial contribution in driving the aggregate figures  
274 upward which has limited contribution in reducing the NMR in Nepalese context. There are evidence  
275 with moderate certainty that using chlorhexidine on the umbilical cord stump as a routine practice  
276 does not appear to significantly impact neonatal mortality when compared to dry cord care or usual  
277 care [18]. WHO has set context specific recommendations regarding use of chlorhexidine,

278 recommending only in setting where harmful traditional substances (e.g. animal dung) are commonly  
279 used on the umbilical cord [19].

280 Our study suggests that a relatively lower proportion of private hospitals tend to practice all seven  
281 signal functions for newborns compared to federal/provincial hospitals. Private health facility has  
282 important role in maternal and newborn health service delivery in Nepal. For example, as per NDHS  
283 2016, out of total 57.3% deliveries take place in HFs; 10.2% deliveries take place in private facilities.  
284 Similarly, out of 56.8% newborns who received first postnatal checkup within 2 days of birth, 40.6%  
285 had received such service from government while the contribution of private sector was 9.8% which  
286 indicate the need of involving private sector in expanding quality newborn service coverage and  
287 improving neonatal health outcomes [15]. However, the lower proportion of private hospitals  
288 practicing all seven newborn care practices has raised concerns on compliance to standard protocol  
289 and quality of service. The Government should set strategies to regularly monitor and supervise private  
290 HFs relating to newborn service delivery. Steps may be taken for capacity development of private HFs  
291 through organizational twinning, whereby, public hospitals with better compliance to newborn care  
292 practices and yielding better health outcomes may coach or engage selected private hospital within the  
293 province to improve compliance and quality of care. Regular interaction with private sector service  
294 providers, periodic discussion on policy provisions and facilitating them to develop infrastructures  
295 required for newborn services could be useful.

296 There are several strengths of this study. First, data collection for NHFS 2015 and NHFS 2021 was  
297 carried out in nationally representative samples, so the finding of this study is generalizable to Nepalese  
298 context. Second, NHFS 2015 and 2021 used validated tools and availability of tracer items or services  
299 are based on the observation by the enumerator thus ensuring the internal validity. Third, it is the first  
300 study based on nationally representative sample of HFs that allows us to compare the progress in  
301 newborn care practices after Nepalese health care delivery system underwent federalization process.

302 Despite several strengths, there are two major limitations to this study. First, we utilized data from a  
303 NHFS 2021 that was designed to assess the service availability and readiness for multiple services like  
304 antenatal care, family planning, family planning, non-communicable diseases related services and so  
305 on and was not primarily dedicated to essential newborn care so some important variables like number  
306 of deliveries, newborn complications that could provide better context to the findings are missing.  
307 Second, the data collection of NHFS 2021 was undertaken during the period of COVID-19 pandemic,



308 newborn care practices may have been under-estimated or over-estimated in NHFS 2021 owing to  
309 changes in service organization during the pandemic period.

310

### 311 **Conclusion:**

312 The availability of seven newborn care practices has increased between 2015 and 2021 and was  
313 relatively lower in private hospitals compared to federal or provincial hospitals. Further scale up and  
314 quality improvement of newborn care practices by HF's is essential to improve newborn survival and  
315 well-being.

316

### 317 **Acknowledgement**

318 We would like to acknowledge DHS program for providing us data for further analysis and we are grateful to  
319 those who directly or indirectly contributed to this study and motivated us to conduct this study.

320

### 321 **Funding:**

322 Authors have not received any specific funding for this research.

323

324 **Competing interests:** Authors declare no competing interest exists.

325

326 **Patient consent for publication:** Not applicable, the article involves secondary analysis of survey data.

327

328 **Data availability statement:** The data is available publicly in the open-access repository. The data can be  
329 downloaded from the official website of “The Demographic and Health Surveys” program.

330 *NHFS2021:* [https://dhsprogram.com/data/dataset/Nepal\\_SPA\\_2021.cfm?flag=0](https://dhsprogram.com/data/dataset/Nepal_SPA_2021.cfm?flag=0)

331 *NHFS2015:* [https://dhsprogram.com/data/dataset/Nepal\\_SPA\\_2015.cfm?flag=1](https://dhsprogram.com/data/dataset/Nepal_SPA_2015.cfm?flag=1)

332

## 333 References

- 334 1. UN Inter-Agency Group for Child Mortality Estimation. Levels and trends in child  
335 mortality. 2022.
- 336 2. WHO, UNICEF, UNFPA. Improving maternal and newborn health and survival and  
337 reducing stillbirth. 2023.
- 338 3. Global Burden of Disease Under-5 Mortality Collaborators. Global, regional, and  
339 national progress towards Sustainable Development Goal 3.2 for neonatal and child health: all-  
340 cause and cause-specific mortality findings from the Global Burden of Disease Study 2019.  
341 Lancet. 2021;398(10303):870-905.
- 342 4. Paulson KR, Kamath AM, Alam T, Bienhoff K, Abady GG, Abbas J, et al. Global,  
343 regional, and national progress towards Sustainable Development Goal 3.2 for neonatal and child  
344 health: all-cause and cause-specific mortality findings from the Global Burden of Disease Study  
345 2019. The Lancet. 2021;398(10303):870-905.
- 346 5. United Nations Department of Economic and Social Affairs, Development S. Sustainable  
347 Development Goals.
- 348 6. Sharrow D, Hug L, You D, Alkema L, Black R, Cousens S, et al. Global, regional, and  
349 national trends in under-5 mortality between 1990 and 2019 with scenario-based projections until  
350 2030: a systematic analysis by the UN Inter-agency Group for Child Mortality Estimation. The  
351 Lancet Global Health. 2022.
- 352 7. Nepal Health Sector Support Programme, Ministry of Health and Population. Health  
353 Sector Budget Analysis of Sudurpashchim Province and Local Levels. 2022.
- 354 8. Ministry of Health and Population, New ERA, ORC Macro. Nepal Demographic and  
355 Health Survey 2001. 2001.
- 356 9. UNICEF. Investing in Newborn Health in South Asia: Country Report Nepal. 2021.
- 357 10. World Health Organization. Essential newborn care [cited 2023 15 May 2023].  
358 Available from: [https://www.who.int/teams/maternal-newborn-child-adolescent-health-and-  
359 ageing/newborn-health/essential-newborn-care](https://www.who.int/teams/maternal-newborn-child-adolescent-health-and-ageing/newborn-health/essential-newborn-care).
- 360 11. Government of Nepal. The Constitution of Nepal. 2015.
- 361 12. Australian Aid, The Asia Foundation. Assignment of functions across levels of  
362 government in Nepal: Summary report. 2020.
- 363 13. Ministry of Health and Population, Department of Health Services. Annual Report  
364 2020/21. 2021.
- 365 14. USAID. Fact Sheet: Chlorhexidine “Navi” (Cord) Care Program. Available from:  
366 [https://2017-  
367 2020.usaid.gov/sites/default/files/documents/1861/CNCP%20factsheet%2016%20July%202015.  
368 For%20Dan%20S.MG-KR%20edits%20%281%29.pdf](https://2017-2020.usaid.gov/sites/default/files/documents/1861/CNCP%20factsheet%2016%20July%202015.For%20Dan%20S.MG-KR%20edits%20%281%29.pdf).
- 369 15. Ministry of Health and Population, New ERA, ICF. Nepal Demographic and Health  
370 Survey 2016. 2001.
- 371 16. Lawn JE, Mwansa-Kambafwile J, Horta BL, Barros FC, Cousens S. ‘Kangaroo mother  
372 care’ to prevent neonatal deaths due to preterm birth complications. International journal of  
373 epidemiology. 2010;39(suppl\_1):i144-i54.
- 374 17. Moore ER, Bergman N, Anderson GC, Medley N. Early skin-to-skin contact for mothers  
375 and their healthy newborn infants. Cochrane database of systematic Reviews. 2016(11).
- 376 18. Organization WH, Research SPo, Reproduction RTiH. WHO recommendations on  
377 maternal and newborn care for a positive postnatal experience: World Health Organization;  
378 2022.

379 19. World Health Organization, Special Programme of Research, Research Training in  
380 Human Reproduction. WHO recommendations on maternal and newborn care for a positive  
381 postnatal experience: World Health Organization; 2022.

382

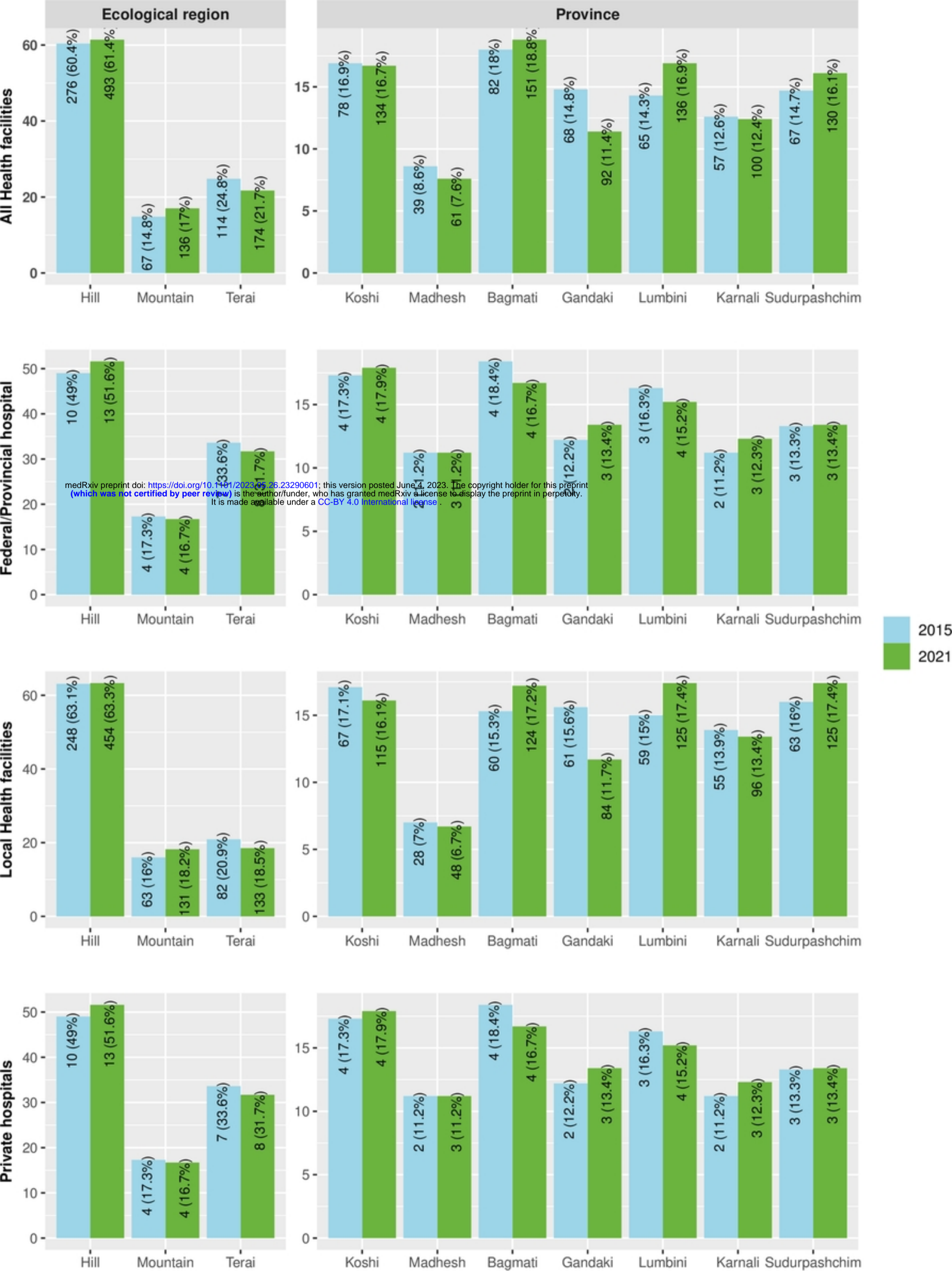


Figure 1: Distribution of facilities in NHFS 2015 and NHFS 2021

medRxiv preprint doi: <https://doi.org/10.1101/2023.05.26.23290601>; this version posted June 4, 2023. The copyright holder for this preprint (which was not certified by peer review) is the author/funder, who has granted medRxiv a license to display the preprint in perpetuity. It is made available under a [CC-BY 4.0 International license](https://creativecommons.org/licenses/by/4.0/).

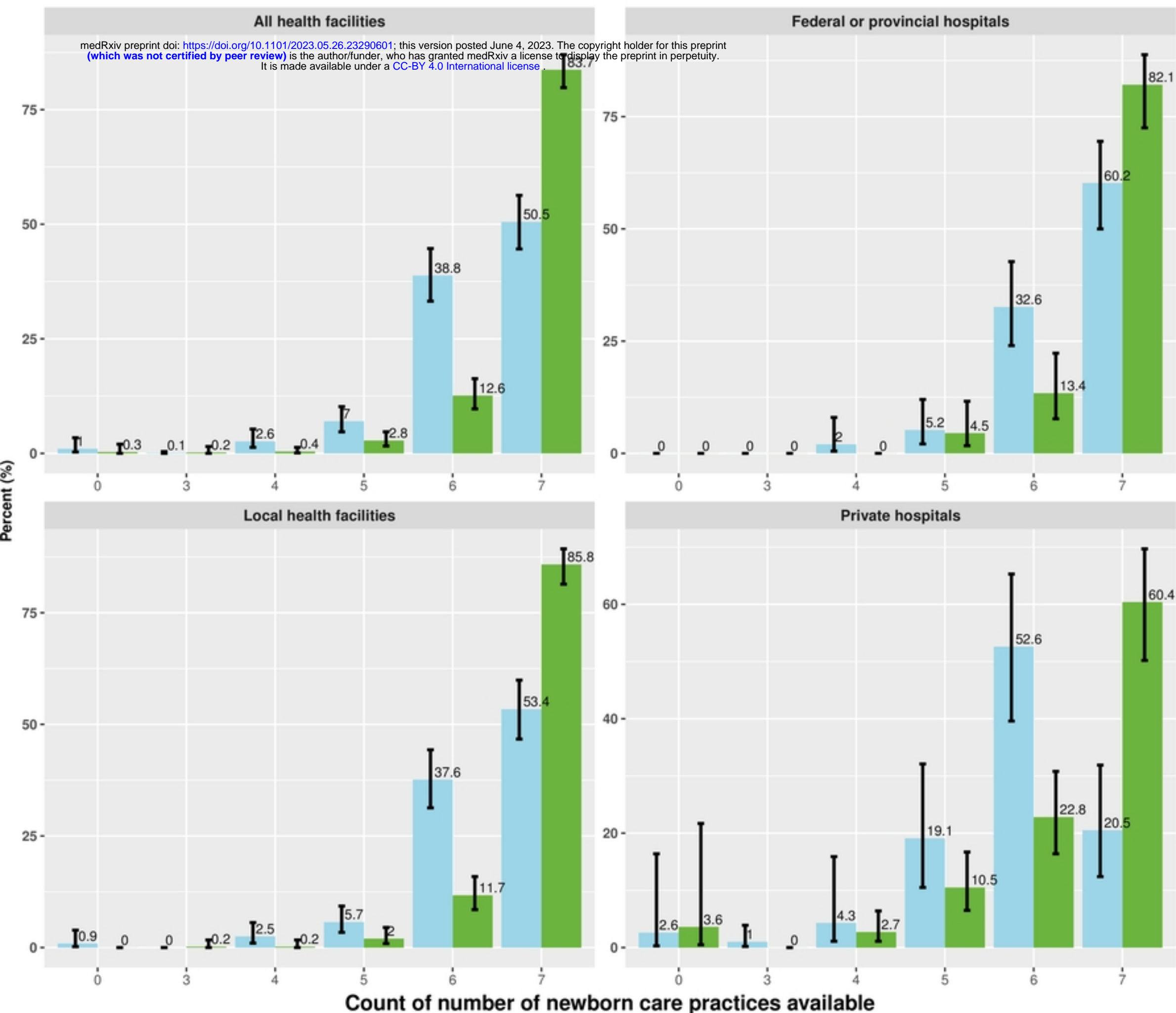


Figure 2: Comparison of availability newborn care practices score