

1 Newborn Care Practices in Health Facilities of Nepal: A Further Analysis from 2 Nepal Health Facility Survey 2015 and 2021

3 *Achyut Raj Pandey^{1*}, Bikram Adhikari¹, Bipul Lamichhane¹, Bishnu Dulal¹, Saugat Pratap KC¹, Deepak Joshi*
4 *¹, Sushil Chandra Baral¹*

5 6 **Affiliation**

7 ¹ HERD International, Lalitpur, Nepal

8 ***Correspondence:** achyutrajpandey2014@gmail.com

9 10 **Abstract**

11 **Introduction:** Increased availability of Newborn care practices in health facilities (HFs) plays an
12 important role in improving the survival and well-being of newborns. In this paper, we aimed to
13 determine newborn care practices among HFs between 2015 and 2021, and associated factors among
14 public and private HFs in Nepal.

15 **Methods:** We performed a secondary analysis of Nepal Health Facility Surveys 2015 and 2021. We
16 summarized categorical variables with a weighted percent and 95% confidence interval (CI). We
17 compared proportions using the z-test of proportion and reported differences in percentage points,
18 95% CI, and p-value. We applied univariate and multivariable logistic regression analysis to determine
19 the association of the availability of seven newborn care practices.

20 **Results:** The percentage of facilities with all seven newborn care practices was 50.5% (95% CI: 44.6,
21 56.3) in 2015 and 83.7% (95%CI: 79.8, 87.0) in 2021 with an overall increase of 34.2 percent points
22 (95% CI: 27.9, 38.7). The availability of all seven newborn care practices significantly increased from
23 2015 to 2021 in each subcategory of the ecological region, all provinces except Madhesh, and all types
24 of HFs except federal/provincial hospitals. In 2021, private hospitals had lower odds of having all
25 seven newborn care practices compared to federal/provincial hospitals (AOR= 0.17, 95% CI: 0.07,
26 0.04). Similarly, in 2021, Sudurpaschim province had 2.87 (95% CI: 1.06, 8.31) higher odds of having
27 all seven newborn care practices compared to Koshi province. In 2021, newborn care practices did
28 not differ significantly based on ecological belt, quality assurance activities, external supervision,
29 delivery service-related training and frequency of HF meeting.

30 **Conclusion:** There was a significant increase in the availability of seven newborn care practices
31 between 2015 and 2021 and in each category of ecological region, province, and type of facility. The
32 type of facility and provinces were associated with the availability of newborn care practices among
33 HFs in Nepal.

34 **Keywords:** *facility survey, newborn care practices, Nepal,*

35 Introduction

36 The first four weeks of life are still the most important for a child's survival. Nearly 2.3 million children
37 lost their lives in the first month of birth in 2021, which equates to about 6,400 fatalities every day [1].
38 Sub-Saharan Africa and Central and Southern Asia have the greatest mortality rates, while progress
39 toward the worldwide 2030 objectives varies at different rates in all of these nations [2]. From 1990
40 to 2020, the worldwide Neonatal Mortality Rate (NMR) fell by more than 50%, from 37 to 17 deaths
41 per 1,000 live births [1]. With a relatively slower pace of decline in NMR, the proportion of neonatal
42 deaths out of total under 5 deaths increased from 39% in 2000 to 48% in 2019 [3, 4].

43 While countries around the globe are struggling to reduce the newborn mortality rate to 12 or fewer
44 deaths per 1000 live births by 2030 as a part of Sustainable Development Goal (SDG) [5], the alarming
45 and avoidable burden of newborn deaths raise concerns about SDGs' success as over 60 countries are
46 predicted to fall short of the goal for newborn mortality [1]. If NMR continues to decline in the current
47 rate, there will be 13.9 newborn fatalities per 1,000 live births by 2030 [6], which is still more than the
48 ideal NMR that can be achieved with the medical and technological advancements at hand. [6]
49 According to an estimate based on predictions of the global burden of disease, the ideal worldwide
50 NMR that could be achieved through medical and technological advancements is 0.80 deaths per 1,000
51 live births [3].

52 In concordance with global pattern, in Nepal, the decline in NMR has been relatively slow compared
53 to the decline in under-five mortality rates. Between 2001 to 2022, under-5 mortality rates declined
54 from 91 per 1000 live births to 33 per 100 live births in 2021, demonstrating a decline of approximately
55 64% in a period of two decades. [7, 8]. However, in the same period, NMR declined by 46% from 39
56 newborn deaths per 1000 live births in 2001 to 21 newborn deaths per 1000 live birth in 2022[7, 8].
57 By achieving the SDG, Nepal will avoid 5,935 impairments and save an additional 27,116 neonatal
58 lives. Additionally, it has been demonstrated that programs aiming at improving maternal and newborn
59 health are economically effective, with every dollar spent on newborn health yielding a return of \$6
60 [9].

61 Newborns all over the world have the right to receive high-quality and essential newborn care which
62 entails immediate medical attention after delivery and continued care throughout the newborn phase
63 at the health facility level as well as at home [10]. It includes immediate care at birth, thermal care,
64 resuscitation when needed, support for breast milk feeding, nurturing care, infection prevention,

65 assessment of health problems, recognition and response to danger signs, and timely and safe referral
66 when needed. Immediate care at birth involves delayed cord clamping, thorough drying, assessment
67 of breathing, skin-to-skin contact, and early initiation of breastfeeding. Essential newborn care is
68 necessary both in the health facility and at home to ensure the well-being and survival of newborns
69 [10]. While the progress on newborn health was challenged by COVID-19 epidemic, rising poverty,
70 and worsening humanitarian situations are adding to the strain on already overburdened healthcare
71 institutions [2], health system in Nepal underwent a transformation from unitary to federal health
72 system with substantial changes in health care delivery mechanism and the way health services are
73 organized [11, 12]. In this context, we attempted to analyze the newborn care service practices,
74 variation by province and ecological belts, change from 2015 to 2021, and factors associated with the
75 availability of newborn care practices.

76 **Methods**

77 **Study design**

78 We used data from two nationally representative Nepal Health Facility Survey (NHFS) conducted in the year
79 2015 and 2021 for secondary data analysis. NHFS 2015 and NHFS 2021 were implemented by NEW Era, a
80 national research firm with the support from Ministry of Health and Population (MOHP) and technical support
81 from ICF International.

82 Nepal's healthcare system operates at three levels: federal, provincial, and local. The Ministry of Health and
83 Population (MoHP) at federal level oversees policy formulation, planning, coordination, and organization of
84 healthcare at all levels. The MoHP regulates services and implements healthcare initiatives. The local health
85 system comprises various facilities such as primary hospitals, PHCCs, health posts, basic health care centers,
86 urban health clinics, community health units, and community-level health facilities, including community health
87 clinics, primary health outreach clinics, and immunization clinics. Health posts or basic health service centers
88 serve as the initial point of contact for basic health services. Each local level is supposed to have a local hospital
89 as per policy provision after federalization process, which are currently being constructed. There are provincial
90 and federal level services particularly secondary and tertiary level service in Nepalese context.

91 Each level beyond health posts serves as a referral point within a network that extends from PHCCs to primary
92 and secondary level hospitals. Private health facilities, including hospitals, clinics, and pharmacies, deliver basic
93 health services up to tertiary care.

94 **Sample and sampling techniques**

95 In NHFS 2015, a total of 1000 HFs were selected out of 4719 eligible HFs using a random stratified sampling
96 technique. A total of 963 health facilities (HFs) were included in the study after eliminating 8 duplicate HFs
97 and accounting for 29 HFs that did not participate due to refusal, closure, or inaccessibility caused by poor
98 infrastructure. NHFS 2021 utilized a stratified random sampling method to select 1633 health facilities from a
99 pool of 5681 eligible facilities. Equal probability systematic sampling was employed, with sample allocation
100 considering facility type within each province to achieve stratification. Out of the 1633 selected HFs, 97% (1576
101 facilities) successfully participated in the survey, while 2% were non-functional, 1% were unreachable, and 0.1%
102 refused to take part in the study. In this study, we used data of 621 (weighted: 457) and 786 (weighted: 804)
103 HFs offering normal vaginal delivery services from NHFS 2015 and NHFS 2021 respectively.

104

105 **Data collection**

106 The NHFS 2015 data collection took place from April to November 2015, while the NHFS 2021 data collection
107 occurred from January to September 2021. The data collection was carried out using four main data collection
108 tools- a) facility inventory questionnaire, b) health provider interview questionnaire, c) observation for maternal

109 and newborn care, and d) Exit interview questionnaire. We used data from the facility inventory questionnaire
110 focusing on newborn care practices in this study.

111

112 **Variables:**

113 **Outcome variable**

114 Those facilities reporting presence of all seven newborn care practices – delivery to the abdomen, drying and
115 wrapping, kangaroo mother care (KMC), initiation of breastfeeding within the first hour, routine complete
116 head-to-toe examination of the newborn before discharge, applying chlorhexidine gel to umbilical cord stump
117 and weighting the newborn immediately upon delivery were considered to have all newborn care practices.

118

119 **Independent variables**

120 The independent variables included ecological region (hill/mountain/terai), location of facility (rural/urban),
121 province (Koshi / Madhesh / Bagmati / Gandaki /Lumbini / Karnali / Sudurpaschim), type of facility (federal,
122 provincial hospital / peripheral facilities / private hospital). The hospitals under federal or provincial
123 government were classified as federal or provincial hospitals, facilities under local governments which include
124 local hospitals, primary health care centers, and health posts were classified as local HFs, and the hospitals
125 owned by private sectors were classified as private hospitals. For frequency of HF meetings, the HFs stating
126 “no” for routine management/administrative meetings were classified as “none”, those stating, “monthly or
127 more often” were classified as “monthly” and those stating, “irregular or every 2-6 months” were classified as
128 “sometimes”.

129

130 **Statistical analysis**

131 We used R program 4.2.0 for data cleaning and statistical analysis. We performed a weighted analysis to address
132 complex survey design using the “survey” package. In the descriptive analysis, we summarized categorical
133 variables with weighted percent and 95% confidence interval. We compared proportions between 2015 and
134 2021 using the z-test of proportion and reported differences in percentage points, 95% CI, and p-value. In
135 inferential analysis, we applied univariate and multivariable logistic regression analysis to determine the
136 association of availability of seven newborn care practices with the province, type of HFs and ecological region.
137 The results of regression analysis were reported with crude and adjusted odds ratio along with their 95% CI
138 and p-value. We considered a p-value less than 0.05 as statistically significant throughout this paper.

139

140 **Ethical approval**

141 The study involves a secondary analysis of NHFS 2015 and NHFS 2021 so, we did not seek ethical approval
142 for this study. In the original survey NHFS 2015 and 2021, ethical clearance was obtained from the Ethical
143 Review Board of Nepal Health Research Council and ICF International.

144 **Results**

145 The distribution of HFs offering normal vaginal delivery services by ecological belt and province between
146 NHFS 2015 and 2021 were similar. In 2021, 61.4% facilities were from hilly region, 17.0% facilities were from
147 mountain region, and 21.7% facilities were from terai region whereas in NHFS 2015, 60.4% facilities were from
148 hill, 14.8% were from mountain and 24.8% were from Terai in 2015. In 2021, 16.7% of facilities were from
149 Koshi, 7.6% were from Madhesh, 18.8% were from Bagmati, 11.4% were from Gandaki, 16.9% were from
150 Lumbini, 12.4% were from Karnali and 16.1% were from Sudurpaschim. Figure 1 also shows distribution of
151 HFs in NHFS 2015 and NHFS 2021. The representation of HFs between the two surveys looks comparable.

152

153 **[Figure-1 is here]**

154 *Figure 1: Distribution of facilities in NHFS 2015 and NHFS 2021*

155

156 Table 1 presents the comparison of newborn care practices among HFs offering normal vaginal
157 delivery services between NHFS 2015 and NHFS 2021. The availability of all seven newborn care
158 practices was 49.5% (95% CI: 43.7, 55.4) in 2015 and 83.7% (95%CI: 79.8, 87.0) in 2021 with an
159 overall increase of 34.2 percentage points (95%CI: 27.9, 38.7). In 2021, more than 90% facilities reported
160 practicing delivery to the abdomen (96.1%, 95% CI: 93.7, 97.7), drying and wrapping of newborns
161 (99.7%, 95% CI: 98.3, 99.9), early initiation of breastfeeding (99.4%, 95% CI: 98.1, 99.8), routine head-
162 to-toe examination (97.4%, 95% CI: 95.3, 98.6), applying chlorhexidine gel to umbilical cord stump
163 (96.5% 95% CI: 94.9, 97.6) and weighing the newborn immediately upon delivery (99.0%, 95% CI:
164 96.8, 99.7).

165 The practice of applying chlorhexidine gel to umbilical cord stump increased from 63.6% (95% CI:
166 57.8, 69.0) in 2015 to 96.5% (95% CI: 94.9, 97.6) in 2021 with a total change of 32.4 percentage points
167 (95% CI: 28.2, 37.7) and was the newborn care practice with highest percentage point improvement.
168 The practice of drying or wrapping newborns, routine head-to-toe examination of newborns, weighing
169 newborns immediately after delivery and Vitamin K use improved positively between 2015 to 2021.
170 There were no significant changes in the practices of initiation of breastfeeding within the first hour,
171 Kangaroo Mother Care (KMC), and BCG vaccination between 2015 and 2021.

172 The details of the comparison of availability of all seven newborn care practices NHFS 2015 and
 173 NHFS 2021 for different ecological belts and seven provinces stratified by type of HF's is present in
 174 the **supplementary table 1**.

175 *Table 1: Comparison of availability of newborn care practices among HF's offering normal vaginal delivery between NHFS 2015 and NHFS 2021*

Newborn care practices	2015	2022	Change
	% (95% CI)	% (95% CI)	% (95% CI)
Delivery to the abdomen (skin to skin)	90.7 (86.5, 93.6)	96.1 (93.7, 97.7)	5.4 (2.4, 8.7)
Drying and wrapping newborns to keep warm	97.3 (94.4, 98.8)	99.7 (98.3, 99.9)	2.4 (0.6, 4.0)
Initiation of breastfeeding within the first hour	98.9 (96.6, 99.6)	99.4 (98.1, 99.8)	0.5 (-0.7, 1.8)
Routine complete (head-to-toe) examination of newborns before	94.3 (90.7, 96.6)	97.4 (95.3, 98.6)	3.1 (0.5, 5.6)
Applying chlorhexidine gel to umbilical cord stump	63.6 (57.8, 69.0)	96.5 (94.9, 97.6)	32.9 (28.2, 37.7)
Kangaroo Mother care	91.4 (87.7, 94.1)	89.7 (86.2, 92.3)	-1.7 (-5.2, 1.7)
Weighing the newborn immediately upon delivery	95.5 (92.3, 97.5)	99.0 (96.8, 99.7)	3.5 (1.3, 5.7)
Vitamin K	9.8 (7.5, 12.7)	19.3 (15.9, 23.2)	9.5 (5.4, 13.5)
BCG	11.8 (8.8, 15.8)	10 (7.3, 13.5)	-1.8 (-5.6, 2.0)
Tetracycline Eye Ointment	12.9 (9.5, 17.4)	6.0 (4.1, 8.9)	-6.9 (-10.5, -3.2)
Availability of all 10 practices	0.2 (0.1, 0.6)	0.8 (0.4, 1.9)	0.6 (-0.4, 1.5)
Availability of first 7 practices	50.5 (44.6, 56.3)	83.7 (79.8, 87.0)	34.2 (27.9, 38.7)

176
 177 Disaggregated by type of facilities, use of Vitamin K and application of chlorhexidine were the two indicators
 178 that improved most between 2015 and 2022 in federal and provincial level hospitals. Use of Vitamin K
 179 increased from 20.5% (95% CI: 13.5, 29.8) in 2015 to 65.1% (95% CI: 54.5, 74.4) in 2022 demonstrating 44.6
 180 percentage points improvement. Similarly, in local level facilities, the use of chlorhexidine was the indicator that
 181 improved most increasing from 67.6% (95% CI: 61.0, 73.5) to 98.7% (95% CI: 96.8, 99.4) demonstrating 31.1
 182 percentage points improvement. In private hospitals, the proportion of facilities applying chlorhexidine gel to
 183 umbilical cord stump increased from 25.4% (95% CI: 16.2, 37.4) to 72.3% (95% CI: 62.4, 80.4) with a total of
 184 46.9 percentage points improvement. [Table 2]

185 *Table 2: Newborn care practices by facility type*

Newborn care practices	Federal hospitals		Local facilities		Private hospitals	
	2015	2021	2015	2021	2015	2021
Delivery to the abdomen (skin to skin)	87.8 (79.5, 93.0)	94.4 (87.0, 97.7)	91.5 (86.8, 94.7)	96.7 (94.0, 98.3)	84.4 (71.3, 92.2)	89.9 (79.4, 95.4)
Drying and wrapping newborns to keep warm	100.0	98.9 (92.2, 99.8)	97.2 (93.7, 98.8)	100.0	97.0 (85.0, 99.5)	95.9 (79.6, 99.3)
Initiation of breastfeeding within the first hour	99.0 (92.9, 99.9)	100.0	99.1 (96.1, 99.8)	99.7 (98.5, 99.9)	96.9 (85.0, 99.4)	95.3 (80.7, 99.0)
Routine complete(head-to-toe) examination of newborns before	99.0 (92.9, 99.9)	95.5 (88.5, 98.3)	94.2 (89.9, 96.7)	97.9 (95.4, 99.0)	94.0 (81.8, 98.2)	93.0 (81.2, 97.6)
Applying chlorhexidine gel to umbilical cord stump	70.4 (60.4, 78.7)	93.3 (85.7, 97.0)	67.6 (61.0, 73.5)	98.7 (96.8, 99.4)	25.4 (16.2, 37.4)	72.3 (62.4, 80.4)
Kangaroo Mother care	94.8 (88.0, 97.9)	95.5 (88.4, 98.3)	92.4 (88.1, 95.2)	90.3 (86.5, 93.2)	81.6 (69.1, 89.8)	79.9 (70.0, 87.1)
Weighing the newborn immediately upon delivery	100.0	100.0	95.3 (91.6, 97.5)	99.2 (96.6, 99.8)	95.3 (82.7, 98.8)	96.4 (78.3, 99.5)
Vitamin K	20.5 (13.5, 29.8)	65.1 (54.5, 74.4)	2.4 (1.2, 4.7)	12.5 (9.2, 16.8)	70.4 (57.0, 80.9)	79.5 (69.6, 86.8)
BCG	31.7 (23.1, 41.7)	22.5 (14.9, 32.5)	9.7 (6.5, 14.2)	8.8 (6.0, 12.7)	22.0 (13.2, 34.2)	19.0 (11.1, 30.7)
Tetracycline Eye Ointment	15.3 (9.4, 24.0)	10.1 (5.3, 18.5)	14.0 (10.1, 19.1)	5.5 (3.3, 8.8)	2.9 (1.2, 6.5)	11.2 (7.1, 17.4)
Availability of all 10 practices	3.1 (1.0, 9.2)	2.2 (0.5, 8.7)	0.1 (0.0, 0.4)	0.7 (0.2, 2.0)	0.5 (0.1, 3.6)	1.7 (0.5, 5.3)
Availability of first 7 practices	60.2 (50.0, 69.5)	82.1 (72.5, 88.8)	53.4 (46.7, 59.9)	85.8 (81.4, 89.3)	20.5 (12.4, 31.9)	60.4 (50.2, 69.7)

186

187 Figure 2 shows the proportion of facilities reporting seven newborn care practices in terms of scores from one
 188 to seven. A score of one means that the facility has one out of seven newborn care practices while seven

189 indicates that the facility has all seven newborn care practices. In 2021, 83.7% of HF's reported having all seven
 190 newborn care practices which is an increase from 50.5% in 2015. Disaggregated by facility type, the proportion
 191 of facilities reporting all seven newborn care practices increased from 60.2% in 2015 to 82.1% in 2021 in federal
 192 or provincial level hospitals, 53.4% in 2015 to 85.8% in 2022 in local HF's and, from 20.5% in 2015 to 60.4%
 193 in 2022 in private hospitals.

194

195 **[Figure 2 is here]**

196 *Figure 2: Comparison of availability newborn care practices score between NHFS 2015 and NHFS 2021*

197 Among ecological belts, the hill region witnessed the highest percentage point improvement in the practice of
 198 all seven newborn signal functions. In the hilly region, the proportion of facilities that reported practicing all
 199 seven newborn care practices increased from 46.6 % (95% CI: 38.7, 54.7) in 2015 to 86.1 % (95% CI: 81.1, 89.9) in
 200 2021 demonstrating a change of 39.5 percentage points (95% CI: 32.5, 46.4). Among provinces,
 201 improvement was seen in Karnali and Bagmati Province. In Karnali province, percentage of facilities with all
 202 newborn care practices increased from 33.0% (95% CI: 19.0,50.7) in 2015 to 85.9% (95% CI: 74.9, 92.5) in
 203 2021 demonstrating a change of 52.9 percentage points (95% CI: 37.6, 68.2). Similarly, In Bagmati province,
 204 the percentage of facilities with all seven newborn care practices improved from 36.9% (95% CI: 25.7, 50.0) in
 205 2015 to 89.7% (95% CI: 80.6, 94.8) in 2021 demonstrating a change of 52.8 percentage points (95% CI: 40.3,
 206 65.2)

207 *Table 3: Comparison of Availability of all seven newborn care practices between 2015 and 2021 by ecological region, province, and type of facility*

Characteristics	NHFS 2015		NHFS 2021		Change, 95% CI	P value
	n	% (95%CI)	n	% (95%CI)		
Ecological region						
Hill	276	46.6(38.7, 54.7)	493	86.1 (81.1, 89.9)	39.5 (32.5, 46.4)	<0.001
Mountain	68	53.5(40.4, 66.2)	136	83.2 (71.6, 90.7)	29.7 (15.1, 44.2)	<0.001
Terai	114	58.0(47.8, 67.5)	174	77.5 (68.0, 84.8)	19.5 (7.8, 31.2)	0.001
Province						
Koshi	78	53.6 (39.9,66.7)	134	76.6(64.4, 85.6)	23 (8.8, 37.3)	0.001
Madhesh	39	58.3(40.5,74.1)	61	74.7 (55.1, 87.7)	16.4 (-4.5, 37.4)	0.131
Bagmati	82	36.9 (25.7, 50.0)	151	89.7 (80.6, 94.8)	52.8 (40.3, 65.2)	<0.001
Gandaki	68	50.2(32.5, 67.9)	92	68.1 (52.5, 80.5)	17.9 (1.3, 34.4)	0.034
Lumbini	65	62.2(47.5, 74.9)	136	89.3 (79.3, 94.8)	27.1 (13.2, 41.1)	<0.001
Karnali	57	33.0(19.0,50.7)	100	85.9 (74.9, 92.5)	52.9 (37.6, 68.2)	<0.001
Sudurpaschim	67	62.6(48.2,75.1)	130	91.9 (83.6, 96.2)	29.3 (15.7, 42.9)	<0.001
Type of facility						
Federal/Provincial	20	60.2(50.1,69.5)	25	82.1(72.6, 88.8)	21.9 (-8.8, 52.3)	0.196
Local HF's	392	53.4(46.7,59.9)	718	85.8(81.4, 89.3)	32.4 (26.7, 38.2)	<0.001
Private Hospitals	45	20.5(12.5,31.8)	61	60.4(50.2, 69.7)	9.9 (20.9, 58.8)	<0.001

208 In multivariate analysis in Table 5, the odds of availability of all newborn care practices in the year 2015 was
209 0.17 (95% CI: 0.07, 0.04; p-value= <0.001) times in private hospitals compared with federal/provincial
210 hospitals, 2.45 (95% CI: 1.04, 5.76, p-value: 0.040) times in HFs having health facility meeting for sometimes
211 and 2.1 (95% CI: 1.03, 7.99, p-value:0.044) times in facilities having monthly health facility meeting compared
212 to HFs with no health facility meeting. The odds of having all seven newborn care practices were 2.87 (95%
213 CI: 1.06, 8.31; p-value: 0.038) times in Sudurpaschim province compared to Koshi. Similarly, the odds of having
214 all seven newborn care practices were 0.26 (0.11, 0.63; p-value=0.003) times in private facilities compared to
215 federal/provincial hospitals

216 Table 4: Association of factors with availability of all newborn care practices except BCG, tetracycline, and Vitamin-K

Characteristic	2015				2021			
	Unadjusted		Adjusted		Unadjusted		Adjusted	
	OR (95%CI)	p-value	OR (95% CI)	p-value	OR (95%CI)	p-value	OR (95% CI)	p-value
Ecological Region								
Hill	Ref		Ref		Ref		Ref	
Mountain	1.32 (0.71, 2.44)	0.378	1.45 (0.75, 2.79)	0.266	0.8 (0.37, 1.72)	0.572	0.64 (0.26, 1.54)	0.316
Terai	1.58 (0.94, 2.66)	0.086	1.55 (0.78, 3.07)	0.213	0.56 (0.30, 1.02)	0.058	0.59 (0.26, 1.34)	0.210
Province								
Koshi	Ref		Ref		Ref		Ref	
Madhesh	1.21 (0.49, 2.96)	0.678	0.96 (0.35, 2.68)	0.945	0.9 (0.32, 2.57)	0.843	1.2 (0.37, 3.92)	0.763
Bagmati	0.51 (0.24, 1.09)	0.081	0.56 (0.24, 1.31)	0.183	2.65 (1.03, 6.79)	0.042	2.53 (0.93, 6.90)	0.069
Gandaki	0.87 (0.35, 2.17)	0.771	0.88 (0.33, 2.35)	0.804	0.65 (0.27, 1.57)	0.336	0.46 (0.18, 1.22)	0.119
Lumbini	1.42 (0.64, 3.18)	0.391	1.41 (0.59, 3.39)	0.441	2.54 (0.96, 6.73)	0.060	2.22 (0.80, 6.14)	0.125
Karnali	0.43 (0.17, 1.06)	0.065	0.41 (0.16, 1.03)	0.058	1.85 (0.74, 4.64)	0.187	1.42 (0.52, 3.92)	0.497
Sudurpaschim	1.45 (0.65, 3.22)	0.362	1.26 (0.55, 2.87)	0.586	3.45 (1.28, 9.29)	0.014	2.87 (1.03, 7.99)	0.044
Type of Facility								
Federal/Provincial hospital	Ref		Ref		Ref		Ref	
Local level facilities	0.76 (0.47, 1.23)	0.263	0.81 (0.47, 1.42)	0.469	1.32 (0.70, 2.48)	0.393	1.09 (0.53, 2.26)	0.811
Private Hospital	0.17 (0.08, 0.35)	<0.001	0.17 (0.07, 0.40)	<0.001	0.33 (0.17, 0.66)	0.002	0.26 (0.11, 0.63)	0.003
Quality assurance activities								
Not Performed	Ref		Ref		Ref		Ref	
Performed	0.7 (0.42, 1.19)	0.189	0.57 (0.31, 1.03)	0.062	1.1 (0.61, 1.98)	0.75	1.01 (0.52, 1.94)	0.983
External supervision								
No	Ref		Ref		Ref		Ref	
Yes	1.41 (0.83, 2.41)	0.207	1.15 (0.65, 2.05)	0.626	1.55 (0.90, 2.68)	0.112	1.42 (0.78, 2.57)	0.248
Provider with training on delivery								
No staff with training	Ref		Ref		Ref		Ref	
At least one staff with training	1.78 (1.08, 2.91)	0.023	1.4 (0.83, 2.36)	0.207	0.88 (0.48, 1.60)	0.666	0.69 (0.35, 1.36)	0.285
Health facility meeting frequency								

Characteristic	2015				2021			
	Unadjusted		Adjusted		Unadjusted		Adjusted	
	OR (95%CI)	p-value	OR (95% CI)	p-value	OR (95%CI)	p-value	OR (95% CI)	p-value
None	Ref		Ref		Ref		Ref	
Sometimes	2.28 (1.00, 5.18)	0.049	2.45 (1.04, 5.76)	0.040	1.53 (0.59, 3.98)	0.379	1.39 (0.50, 3.87)	0.533
Monthly	2.21 (1.19, 4.09)	0.012	2.1 (1.09, 4.04)	0.026	1.44 (0.65, 3.19)	0.371	1.36 (0.58, 3.21)	0.477
OR = Odds Ratio, CI = Confidence Interval								

217

218 **Discussion:**

219 The availability of all newborn care practices has increased except kangaroo mother care between 2015
220 and 2021. The availability of seven newborn care practices increased to 84% in 2021 from 50% in
221 2015 with an overall increase of 34 percentage points. In 2021 and 2015, private hospitals had lower odds of
222 having all seven newborn care practices compared to federal/provincial hospitals. In 2021,
223 Sudurpaschim province had 3 times higher odds of having all seven newborn care practices compared
224 to Koshi province. Availability of seven newborn care practices did not differ significantly based on
225 ecological belt, quality assurance activities, external supervision, delivery service-related training and
226 frequency of HF meeting.

227 Furthermore, HFs that held meetings on a monthly or occasional basis were found to have higher
228 odds of having all seven practices. This finding underscores the need for regular collaboration and
229 communication among health facility staff to promote the availability of essential newborn care
230 practices.

231 In the regression model, with reference to Koshi province, Sudurpaschim province had almost 3-fold
232 higher odds of practicing all seven essential newborn care practices. Between 2015 to 2019, the
233 proportion of facilities practicing all seven essential newborn care practices increased by 29%. Notable
234 positive changes in coverage of essential newborn care practices in Sudurpaschim province could be
235 because of the higher priority placed in the health sector compared to other provinces. For example,
236 the per capita spending on health increased from 607 per capita to 2941 per capita in Sudurpaschim
237 province demonstrating approximately 3.8 folds increase while it increased from 1821 to 3432 at the
238 national level which reflects around 88% increase in the same period [7].

239 The proportion of facilities performing all 7 signal functions for newborns increased from 50% to
240 84% with almost 34 percentage points increase. This progress has been driven by an increase in
241 coverage of increase in the proportion of HFs applying chlorhexidine gel to umbilical cord stump
242 which increased from 64% to 97%, with almost 33 percentage points increase in the period. Based on
243 the assessment conducted in 10 districts, the government of Nepal decided to scale up the
244 chlorhexidine programme to 41 districts by 2014 [13]. In the first phase of chlorhexidine programme
245 between October 2011 and September 2014, 49 applications of chlorhexidine was implemented in 49
246 districts which were then gradually scaled up throughout the country after October 2014.[14] By Mid
247 of 2016, 58 districts were implementing chlorhexidine at health facility and community levels by mid-

248 2016 which has not been scaled up throughout the country [13, 15]. The jump in the proportion of
249 HF's applying chlorhexidine gel to the umbilical cord stump could be because of policy changes or the
250 decision of the government of Nepal to scale up the programme throughout the country.

251 Despite the high importance placed on the KMC, the proportion of facilities practicing KMC declined
252 from 61% to 86% between 2015 to 2021. The KMC approach encompasses several interventions,
253 such as continuous and early skin-to-skin contact, assistance with breastfeeding, early hospital
254 discharge, and supportive care for stable neonates. Implementing this care package in hospitals for
255 preterm neonates weighing less than 2000 g has been identified to decrease the risk of neonatal
256 mortality by 51% [16], hypothermia by 77% [17], and also can shorten the duration of hospital stay.
257 Although 86% of facilities reported adopting KMC, the coverage seems to decline further when it is
258 captured at population level as all newborns delivered or visiting facilities with KMC may not receive
259 the service. Multiple Indicators Cluster Survey in 2019 reported that the proportion of babies receiving
260 KMC service was a cost-effective intervention to care for stable preterm/low birth weight (LBW)
261 babies that is being implemented by the Government of Nepal as special care for small and/or sick
262 new-born. Multiple Indicators Cluster Survey in 2019 reported that the proportion of babies receiving
263 KMC service was a cost-effective intervention to care for stable preterm/low birth weight (LBW)
264 babies that is being implemented by the Government of Nepal as special care for small and/or sick
265 new-born. Although skin –to-skin contact has been part of different programs/ training packages such
266 as Community-Based Integrated Management of Neonatal and Childhood Illnesses (CB-IMNCI),
267 Facility-Based Integrated Management of Neonatal and Childhood Illnesses (FB-IMNCI), Skilled
268 Birth Attendants (SBA) training and Comprehensive level-II new-born care, a full-fledged KMC
269 program was rolled out in the year 2021 [13].

270 Despite 30 percentage point increment in proportion of facilities with all seven signal functions
271 available, the latest evidence from Nepal Demographic and Health Survey (NDHS) 2022 show that
272 NMR has remained stagnant at 21 per 100,000 live births between 2016 to 2021[7, 15]. As discussed
273 above, this might be because chlorhexidine has substantial contribution in driving the aggregate figures
274 upward which has limited contribution in reducing the NMR in Nepalese context. There are evidence
275 with moderate certainty that using chlorhexidine on the umbilical cord stump as a routine practice
276 does not appear to significantly impact neonatal mortality when compared to dry cord care or usual
277 care [18]. WHO has set context specific recommendations regarding use of chlorhexidine,

278 recommending only in setting where harmful traditional substances (e.g. animal dung) are commonly
279 used on the umbilical cord [19].

280 Our study suggests that a relatively lower proportion of private hospitals tend to practice all seven
281 signal functions for newborns compared to federal/provincial hospitals. Private health facility has
282 important role in maternal and newborn health service delivery in Nepal. For example, as per NDHS
283 2016, out of total 57.3% deliveries take place in HFs; 10.2% deliveries take place in private facilities.
284 Similarly, out of 56.8% newborns who received first postnatal checkup within 2 days of birth, 40.6%
285 had received such service from government while the contribution of private sector was 9.8% which
286 indicate the need of involving private sector in expanding quality newborn service coverage and
287 improving neonatal health outcomes [15]. However, the lower proportion of private hospitals
288 practicing all seven newborn care practices has raised concerns on compliance to standard protocol
289 and quality of service. The Government should set strategies to regularly monitor and supervise private
290 HFs relating to newborn service delivery. Steps may be taken for capacity development of private HFs
291 through organizational twinning, whereby, public hospitals with better compliance to newborn care
292 practices and yielding better health outcomes may coach or engage selected private hospital within the
293 province to improve compliance and quality of care. Regular interaction with private sector service
294 providers, periodic discussion on policy provisions and facilitating them to develop infrastructures
295 required for newborn services could be useful.

296 There are several strengths of this study. First, data collection for NHFS 2015 and NHFS 2021 was
297 carried out in nationally representative samples, so the finding of this study is generalizable to Nepalese
298 context. Second, NHFS 2015 and 2021 used validated tools and availability of tracer items or services
299 are based on the observation by the enumerator thus ensuring the internal validity. Third, it is the first
300 study based on nationally representative sample of HFs that allows us to compare the progress in
301 newborn care practices after Nepalese health care delivery system underwent federalization process.

302 Despite several strengths, there are two major limitations to this study. First, we utilized data from a
303 NHFS 2021 that was designed to assess the service availability and readiness for multiple services like
304 antenatal care, family planning, family planning, non-communicable diseases related services and so
305 on and was not primarily dedicated to essential newborn care so some important variables like number
306 of deliveries, newborn complications that could provide better context to the findings are missing.
307 Second, the data collection of NHFS 2021 was undertaken during the period of COVID-19 pandemic,

308 newborn care practices may have been under-estimated or over-estimated in NHFS 2021 owing to
309 changes in service organization during the pandemic period.

310

311 **Conclusion:**

312 The availability of seven newborn care practices has increased between 2015 and 2021 and was
313 relatively lower in private hospitals compared to federal or provincial hospitals. Further scale up and
314 quality improvement of newborn care practices by HF's is essential to improve newborn survival and
315 well-being.

316

317 **Acknowledgement**

318 We would like to acknowledge DHS program for providing us data for further analysis and we are grateful to
319 those who directly or indirectly contributed to this study and motivated us to conduct this study.

320

321 **Funding:**

322 Authors have not received any specific funding for this research.

323

324 **Competing interests:** Authors declare no competing interest exists.

325

326 **Patient consent for publication:** Not applicable, the article involves secondary analysis of survey data.

327

328 **Data availability statement:** The data is available publicly in the open-access repository. The data can be
329 downloaded from the official website of “The Demographic and Health Surveys” program.

330 *NHFS2021*: https://dhsprogram.com/data/dataset/Nepal_SPA_2021.cfm?flag=0

331 *NHFS2015*: https://dhsprogram.com/data/dataset/Nepal_SPA_2015.cfm?flag=1

332

333 References

- 334 1. UN Inter-Agency Group for Child Mortality Estimation. Levels and trends in child
335 mortality. 2022.
- 336 2. WHO, UNICEF, UNFPA. Improving maternal and newborn health and survival and
337 reducing stillbirth. 2023.
- 338 3. Global Burden of Disease Under-5 Mortality Collaborators. Global, regional, and
339 national progress towards Sustainable Development Goal 3.2 for neonatal and child health: all-
340 cause and cause-specific mortality findings from the Global Burden of Disease Study 2019.
341 Lancet. 2021;398(10303):870-905.
- 342 4. Paulson KR, Kamath AM, Alam T, Bienhoff K, Abady GG, Abbas J, et al. Global,
343 regional, and national progress towards Sustainable Development Goal 3.2 for neonatal and child
344 health: all-cause and cause-specific mortality findings from the Global Burden of Disease Study
345 2019. The Lancet. 2021;398(10303):870-905.
- 346 5. United Nations Department of Economic and Social Affairs, Development S. Sustainable
347 Development Goals.
- 348 6. Sharrow D, Hug L, You D, Alkema L, Black R, Cousens S, et al. Global, regional, and
349 national trends in under-5 mortality between 1990 and 2019 with scenario-based projections until
350 2030: a systematic analysis by the UN Inter-agency Group for Child Mortality Estimation. The
351 Lancet Global Health. 2022.
- 352 7. Nepal Health Sector Support Programme, Ministry of Health and Population. Health
353 Sector Budget Analysis of Sudurpashchim Province and Local Levels. 2022.
- 354 8. Ministry of Health and Population, New ERA, ORC Macro. Nepal Demographic and
355 Health Survey 2001. 2001.
- 356 9. UNICEF. Investing in Newborn Health in South Asia: Country Report Nepal. 2021.
- 357 10. World Health Organization. Essential newborn care [cited 2023 15 May 2023].
358 Available from: [https://www.who.int/teams/maternal-newborn-child-adolescent-health-and-](https://www.who.int/teams/maternal-newborn-child-adolescent-health-and-ageing/newborn-health/essential-newborn-care)
359 [ageing/newborn-health/essential-newborn-care](https://www.who.int/teams/maternal-newborn-child-adolescent-health-and-ageing/newborn-health/essential-newborn-care).
- 360 11. Government of Nepal. The Constitution of Nepal. 2015.
- 361 12. Australian Aid, The Asia Foundation. Assignment of functions across levels of
362 government in Nepal: Summary report. 2020.
- 363 13. Ministry of Health and Population, Department of Health Services. Annual Report
364 2020/21. 2021.
- 365 14. USAID. Fact Sheet: Chlorhexidine “Navi” (Cord) Care Program. Available from:
366 [https://2017-](https://2017-2020.usaid.gov/sites/default/files/documents/1861/CNCP%20factsheet%2016%20July%202015.For%20Dan%20S.MG-KR%20edits%20%281%29.pdf)
367 [2020.usaid.gov/sites/default/files/documents/1861/CNCP%20factsheet%2016%20July%202015.](https://2017-2020.usaid.gov/sites/default/files/documents/1861/CNCP%20factsheet%2016%20July%202015.For%20Dan%20S.MG-KR%20edits%20%281%29.pdf)
368 [For%20Dan%20S.MG-KR%20edits%20%281%29.pdf](https://2017-2020.usaid.gov/sites/default/files/documents/1861/CNCP%20factsheet%2016%20July%202015.For%20Dan%20S.MG-KR%20edits%20%281%29.pdf).
- 369 15. Ministry of Health and Population, New ERA, ICF. Nepal Demographic and Health
370 Survey 2016. 2001.
- 371 16. Lawn JE, Mwansa-Kambafwile J, Horta BL, Barros FC, Cousens S. ‘Kangaroo mother
372 care’ to prevent neonatal deaths due to preterm birth complications. International journal of
373 epidemiology. 2010;39(suppl_1):i144-i54.
- 374 17. Moore ER, Bergman N, Anderson GC, Medley N. Early skin-to-skin contact for mothers
375 and their healthy newborn infants. Cochrane database of systematic Reviews. 2016(11).
- 376 18. Organization WH, Research SPo, Reproduction RTiH. WHO recommendations on
377 maternal and newborn care for a positive postnatal experience: World Health Organization;
378 2022.

379 19. World Health Organization, Special Programme of Research, Research Training in
380 Human Reproduction. WHO recommendations on maternal and newborn care for a positive
381 postnatal experience: World Health Organization; 2022.

382

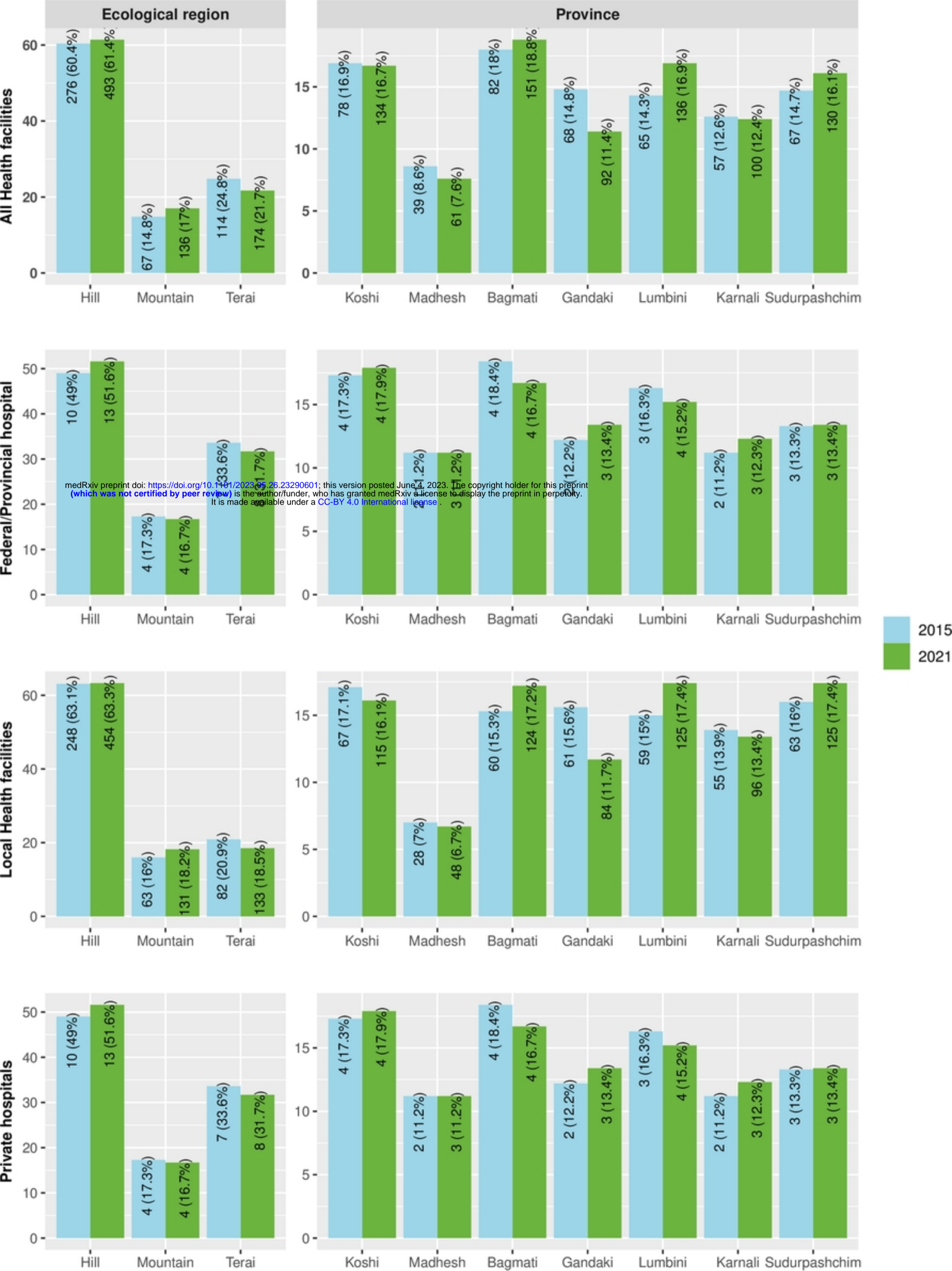


Figure 1: Distribution of facilities in NHFS 2015 and NHFS 2021

medRxiv preprint doi: <https://doi.org/10.1101/2023.05.26.23290601>; this version posted June 4, 2023. The copyright holder for this preprint (which was not certified by peer review) is the author/funder, who has granted medRxiv a license to display the preprint in perpetuity. It is made available under a [CC-BY 4.0 International license](https://creativecommons.org/licenses/by/4.0/).

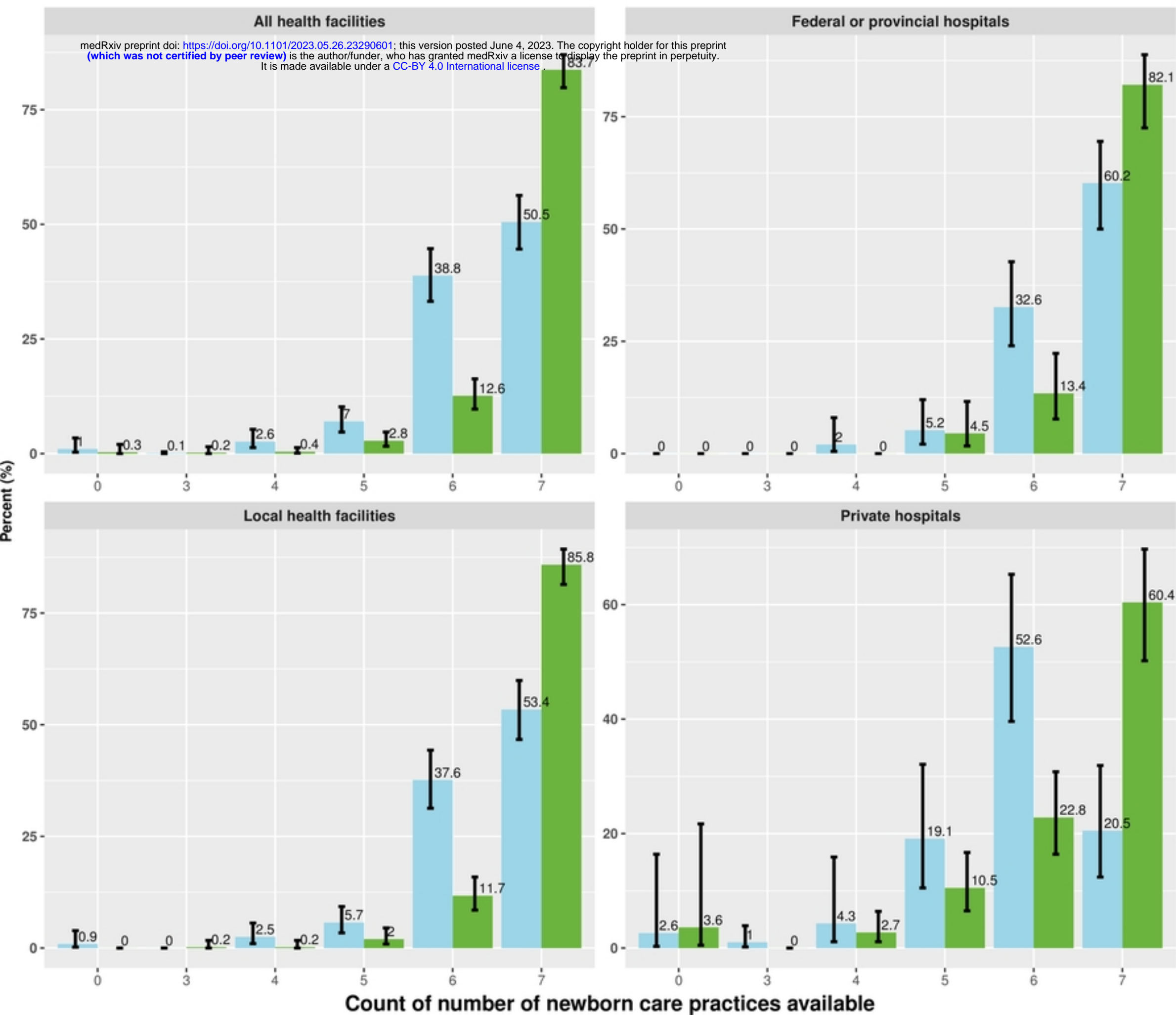


Figure 2: Comparison of availability newborn care practices score