

Cholera deaths during outbreaks in Uvira, eastern Democratic Republic of the Congo, 10-35 months after mass vaccination

Patrick Musole Bugeme^{1,2}, Hanmeng Xu¹, Chloe Hutchins³, Juan Dent Hulse¹, Jaime Mufitini Saidi⁴, Baron Bashige Rumedeka^{1,4}, Moïse Itongwa¹, Joël Faraja Zigashane Mashauri¹, Faraja Masembe Lulela¹, Justin Bengehya⁵, Jean-Claude Kulondwa⁵, Amanda K Debes⁶, Iza Ciglenecki⁷, Esperance Tshiwedi⁸, Faïda Kitoga⁸, Tavia Bodisa-Matamu⁸, Taty Nadège⁹, Hugo Kavunga-Membo^{8,10}, Octavie Lunguya¹⁰, Placide Okitayemba Welo⁹, Jackie Knee³, Daniel Mukadi-Bamuleka^{8,10}, Andrew S. Azman^{1,11,12*}, Espoir Bwenge Malembaka^{1,2}

¹Department of Epidemiology, Johns Hopkins University, Baltimore, MD 21205, USA

²Centre for Tropical Diseases and Global Health (CTDGH), Université Catholique de Bukavu, Bukavu, Democratic Republic of the Congo

³Department of Disease Control, London School of Hygiene & Tropical Medicine, UK

⁴Ministère de la Santé Publique, Division Provinciale de la Santé Publique du Sud-Kivu, Zone de Santé d'Uvira, Democratic Republic of the Congo

⁴Ministère de la Santé Publique, Zone de Santé d'Uvira, Democratic Republic of Congo

⁵Ministère de la Santé Publique, Division Provinciale de la Santé Publique du Sud-Kivu, Democratic Republic of the Congo

⁶Department of International Health, Johns Hopkins University, Baltimore, MD 21205, USA

⁷Médecins Sans Frontières, 1202 Geneva, Switzerland

⁸Rodolphe Merieux INRB-Goma Laboratory, Goma, North-Kivu, Democratic Republic of the Congo

⁹Programme National d'Élimination de Choléra et lutte contre les autres Maladies 19 Diarrhéiques (PNECHOL-MD), Kinshasa, Democratic Republic of the Congo

¹⁰Institut National de Recherche Biomédicale, INRB, Kinshasa, Democratic Republic of the Congo

¹¹Geneva Centre for Emerging Viral Diseases, Geneva University Hospitals (HUG), Geneva, Switzerland

¹²Division of Tropical and Humanitarian Medicine, Geneva University Hospitals (HUG), Geneva, Switzerland

*Corresponding author:

Andrew S. Azman (azman@jhu.edu)

Department of Epidemiology, Johns Hopkins Bloomberg School of Public Health, Johns Hopkins University, Baltimore, MD 21205, USA

Geneva Centre for Emerging Viral Diseases, Geneva University Hospitals (HUG), Geneva, Switzerland

Division of Tropical and Humanitarian Medicine, Geneva University Hospitals (HUG), Geneva, Switzerland

Target journal: Open Forum Infectious Diseases:

https://academic.oup.com/ofid/pages/Submission_Online?login=true

43 **Abstract**

44 Our understanding of the burden and drivers of cholera mortality is hampered by limited
45 surveillance and confirmation capacity. Leveraging enhanced clinical and laboratory
46 surveillance in the cholera-endemic community of Uvira, eastern Democratic Republic of
47 Congo, we describe cholera deaths across three epidemics between September 2021-
48 September 2023, following mass vaccination.

49

50

51

52

53

54

55

56

57

58

59

60

Cholera is an acute diarrheal disease that can rapidly cause severe dehydration and death without prompt and aggressive rehydration[1]. Estimates of the true burden of cholera are highly uncertain because surveillance systems often lack routine identification and testing of suspected cases, and documentation of community cases and deaths is limited. In resource-constrained settings, passive, facility-based surveillance data on mortality are likely to underestimate true mortality; contributing factors include limited patient access to health facilities and incentives for under-reporting[2–5]. Additionally, limited access to confirmatory laboratories for cases and deaths may lead to distorted estimates of the true cholera mortality, both at local and global levels[6]. In the city of Uvira in South Kivu [eastern Democratic Republic of the Congo (DRC)], we implemented an enhanced cholera surveillance system as part of an impact evaluation of preventive mass oral cholera vaccination campaigns conducted in 2020. The killed oral cholera vaccine (kOCV) Euvichol-plus was administered to individuals ≥ 12 months old living in Uvira in two mass campaigns conducted in July-August and October 2020. Here, we describe cholera deaths across three cholera epidemics in the first three years after vaccination (Figure).

Methods

Between September 1, 2021 – September 30, 2023 (10-35 months after the second round of vaccination), suspected cholera cases were recruited at the two cholera treatment facilities in Uvira: the Cholera Treatment Centre at the Uvira General Referral Hospital; and Cholera Treatment Unit at the Kalundu CEPAC health center (both designated as CTC herein). A suspected cholera case was any person ≥ 12 months old, reporting ≥ 3 acute, watery, and non-bloody diarrheal stools within the 24 hours before hospitalization. Data on sociodemographic characteristics, clinical manifestations, including the level of dehydration based on the Global Task Force on Cholera Control (GTFCC) guidance,[7] vaccination status, and clinical

outcome were collected using a structured electronic questionnaire. Written consent was obtained from participants. Rectal swabs and stool samples were collected from consenting patients. Rectal swabs were enriched for 6-18 hours in alkaline peptone water at ambient temperature (~30°C). Crystal VC Rapid Diagnostic Tests (RDTs; Arkay, India) were used to test raw stool samples and rectal swab enrichments. Samples collected after September 2022 were cultured at the CTC laboratory, whereas those collected before were tested at Rodolphe Mérieux INRB-Goma laboratory in North Kivu. In addition, stool samples from the 2021-2022 outbreak were spotted onto Whatman 903 Protein Saver Cards (Cytiva, UK) and tested by PCR at Johns Hopkins University[8].

Community deaths were not systematically captured by the surveillance system, so the study team learned of suspected community cholera deaths through informal means (Appendix). Visits were organized to collect additional information on the circumstances of death, socio-demographics, clinical manifestations, and vaccination status for each suspected community cholera death. Cholera was the suspected cause of death if the deceased was ≥ 12 months old and their family members reported that they experienced acute watery diarrhea in the 24 hours preceding the death, with no other cause of death reported. Biological samples were collected on arrival for deaths that occurred during the transit to the CTC.

The characteristics of study participants were compared using the Wilcoxon rank sum and Pearson's Chi-squared (or Fisher's exact) tests. We estimated the effectiveness of at least one dose of kOCV against severe cholera (defined by a culture/PCR-confirmed cholera case with severe or treatment plan C dehydration) and suspected cholera death (i.e., any suspected cholera case dying within the CTC with no other cause of death identified) using the screening method, which relies on contrasts of the proportion of cases vaccinated and the vaccine coverage in the population[9]. As vaccine coverage declined over time due to

population movement, we estimated a weighted vaccination coverage, based on a log-linear regression of data from three representative vaccine coverage surveys conducted 11, 19 and 29 months after vaccination. We estimated confidence intervals for VE based on a logistic regression model, as previously proposed[9].

Results

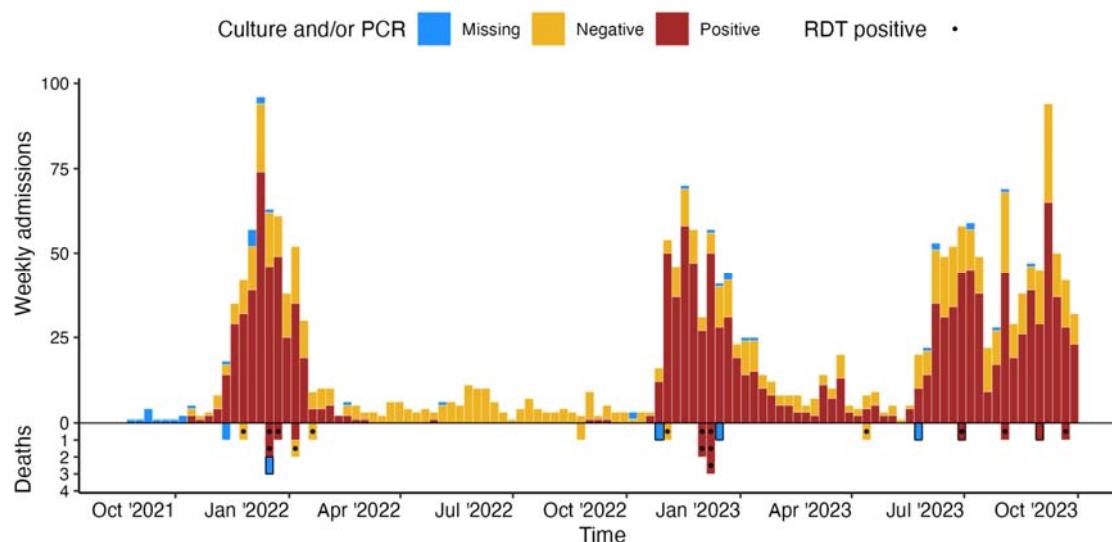


Figure. Weekly cholera incidence (top) and death (bottom) by culture or PCR confirmation results in Uvira, 01 September 2021 to 30 September 2023. Before September 10, 2022, culture was performed with a significant lag at an external reference laboratory (INRB Goma) from wet filter papers (stool or rectal swab enrichments suspended in saline), likely leading to reduced sensitivity for detection of *V. cholerae* O1. From September 10, 2022, culture has been performed on-site in Uvira. Rapid diagnostic tests (a mix of O1 and O1/O139 tests) were also used throughout the study. For this reason, we show enriched rapid test positive results as dots to help understand which deaths have more laboratory data supporting *V. cholerae* O1 as the causative agent. Community deaths are highlighted with black boxes.

During the 25-month study period, 2209 suspected cholera cases were admitted to the CTCs, of which 1,312 (61.9%) were RDT-positive and 1,460 (67.3%) cases were confirmed by culture or PCR (Table 1). In the same period, 24 suspected cholera deaths were reported, of which 18 (75%) occurred within CTCs, with a facility-based suspected case fatality ratio (CFR) of 0.81% (18/2209).

129 **Table 1. Characteristics of patients with cholera who died and survived in the cholera**
130 **treatment facilities, Uvira, September 2021 to September 2023**

Characteristic	Overall, N = 2,209	Suspected cholera deaths, N = 18	Suspected cholera cases (survivors), N = 2,191	P value
Age (years), median (IQR)	17.0 (7.0, 34.0)	40.0 (21.0, 67.8)	17.0 (7.0, 34.0)	<0.001
Age group (years)				<0.001
< 5 years	384 (17.4%)	1 (5.6%)	383 (17.5%)	
5-14 years	608 (27.5%)	1 (5.6%)	607 (27.7%)	
15-59 years	1,024 (46.4%)	8 (44.4%)	1,016 (46.4%)	
≥ 60 years	193 (8.7%)	8 (44.4%)	185 (8.4%)	
Sex				0.873
Female	1,063 (48.1%)	9 (50.0%)	1,054 (48.1%)	
Male	1,146 (51.9%)	9 (50.0%)	1,137 (51.9%)	
Health facility				0.758
CTC (Uvira Referral Hospital)	1,806 (81.8%)	16 (88.9%)	1,790 (81.7%)	
CTU (Kalundu CEPAC health center)	403 (18.2%)	2 (11.1%)	401 (18.3%)	
Level of dehydration on admission*				0.002
Mild to moderate	1,060 (48.0%)	2 (11.1%)	1,058 (48.3%)	
Severe	1,149 (52.0%)	16 (88.9%)	1,133 (51.7%)	
Time from symptoms onset to hospitalization				0.253
< 1 day	1,209 (54.9%)	9 (50.0%)	1,200 (54.9%)	
1 day	776 (35.2%)	9 (50.0%)	767 (35.1%)	
≥ 2 days	219 (9.9%)	0 (0.0%)	219 (10.0%)	
Missing	5	0	5	
Duration of hospitalization				<0.001
< 1 day	130 (6.0%)	7 (38.9%)	123 (5.7%)	
1 day	542 (24.8%)	6 (33.3%)	536 (24.7%)	
≥ 2 days	1,512 (69.2%)	5 (27.8%)	1,507 (69.6%)	
Missing	25	0	25	
Comorbidities**				0.490
No	1,449 (91.9%)	7 (87.5%)	1,442 (92.0%)	
Yes	127 (8.1%)	1 (12.5%)	126 (8.0%)	
Missing	633	10	623	
Sought care at another health facility				0.746
No	1,875 (84.9%)	15 (83.3%)	1,860 (84.9%)	
Yes	334 (15.1%)	3 (16.7%)	331 (15.1%)	
Treated at home or pharmacy				0.557
No	1,075 (48.7%)	10 (55.6%)	1,065 (48.6%)	
Yes	1,134 (51.3%)	8 (44.4%)	1,126 (51.4%)	

Use of antibiotics before admission				0.232
No	1,163 (52.6%)	12 (66.7%)	1,151 (52.5%)	
Yes	1,046 (47.4%)	6 (33.3%)	1,040 (47.5%)	
APW-enriched RDT				0.081
Negative	807 (38.1%)	3 (17.6%)	804 (38.2%)	
Positive	1,312 (61.9%)	14 (82.4%)	1,298 (61.8%)	
Missing	90	1	89	
Culture/PCR confirmed cholera				0.818
Negative	709 (32.7%)	6 (35.3%)	703 (32.7%)	
Positive	1,460 (67.3%)	11 (64.7%)	1,449 (67.3%)	
Missing	40	1	39	
Vaccination status				>0.999***
Not vaccinated	1,688 (81.0%)	11 (84.6%)	1,677 (80.9%)	
At least 1 dose	397 (19.0%)	2 (15.4%)	395 (19.1%)	
Missing	124	5	129	

Data are n (proportion) unless otherwise specified. *: The level of dehydration assessed using the Global Task Force on Cholera Control (GTFCC) guidance.[7] **: Comorbidities refer to self-reported diabetes, hypertension, or HIV infection (Appendix). P values are derived from Pearson's Chi-squared test or Fisher's exact test comparing attributes between survivors and those who died, denoted by ***. A confirmed cholera case was defined by a positive PCR or culture result. A negative case was confirmed by negative PCR and culture, or by a negative culture only result when PCR was not done.

Fourteen (82.4%) of the 17 health facility deaths in which a sample was collected tested positive for cholera by RDT, and 11 (64.7%) by culture or PCR. The overall culture/PCR-confirmed facility-based CFR was 11 /1449 (0.75%), though this was significantly higher in participants aged ≥ 60 years [4.46% (5/107), $p=0.010$] compared to younger ones. The suspected cholera CFR in this age-group (≥ 60 years) was 5.45% (11/191) (Table S2).

Comparison between suspected cholera deaths and survivors in health facilities revealed that those dying from cholera tended to be older, with a median (interquartile range, IQR) age: 40.0 (21.0 – 67.8) years] more than double that of survivors [median (IQR): 17.0 (7.0–34.0) years; $p < 0.001$], with no difference by sex (Table 1). Suspected cases who died were more likely to have been admitted with severe dehydration compared to survivors (88.9% vs 51.7%, $p=0.002$). Eleven (61.1%) health facility deaths occurred after at least one day of

hospitalization. Two of the facility deaths with known vaccination status (n=13), both culture-positive, were reported to have received one dose of oral cholera vaccine during the 2020 vaccination campaign, but we were unable to confirm these with vaccination cards.

The estimated VE was 78.4% (95% CI 74.2–82.4%) against severe culture/PCR-confirmed cholera (dehydration plan C) and 85.5% (95% CI 49.0–97.7%) against death from all-cause diarrhea (suspected cholera death). The method we used to estimate vaccine effectiveness relies heavily on assumptions about the vaccine coverage in the community, and even when assuming a 10% lower vaccination coverage in the population than measured from cross-sectional surveys, the estimated VE against suspected cholera death remained substantial (above 70%) (Figure S1).

The age of community deaths ranged between 4-74 years (median: 38 years), with half (n=3) of them being female. Two community deaths had a stool specimen collected and tested positive for cholera by RDT and culture.

Discussion

The 0.81% facility-based CFR for suspected cholera cases observed from this passive surveillance system aligns with the WHO target of <1% and was lower than that reported between 2008-2017 in DRC hotspot health zones (1.1%)[10]. While we captured some community deaths, the true cholera mortality burden in Uvira is likely higher than reported here due to lack of robust community-based surveillance and the number of private health facilities that are not integrated into the official surveillance system. The limited existing studies comparing the reported number of facility deaths to those occurring in both facilities and the community suggest this gap is large [2–4,11]. A study from rural Kenya showed that while suspected cholera cases were under-reported by 37%, suspected cholera deaths were

under-reported by 200%, implying a 52% underestimate of the community CFR[2–4,11]. In Cameroon, 44% of suspected cholera deaths occurred in the community or during transit to a treatment unit [3]. During the 2010-2011 cholera outbreak in Haiti, community surveys led to almost a 3-fold higher death toll in certain areas compared to official facility-based estimates[4].

A previous report from across DRC suggested that 20.8% of the suspected cholera deaths during the 2008-2017 period were among those under five years old, a stark contrast to the 6.6% in our study [10]. This difference may be a result of several factors including the systematic application of case definitions in Uvira (i.e., improved specificity), differences in health seeking behaviors and/or in the quality of care given to young patients in Uvira.

Almost half of the health facility deaths (8/18) occurred among patients aged at least 60 years, leading to an unacceptably high age group-specific CFR (4.02%). Moreover, 61.1% of deaths happened after ≥ 1 day of hospitalization. This may be because clinical assessment and management of severe dehydration is challenging in the elderly who might have comorbidities requiring slower rehydration pace to avoid fluid overload. Complications related to underlying comorbidities like cardiovascular diseases, diabetes mellitus, anemia, or malnutrition may be overlooked in cholera treatment centers, particularly in the middle of an outbreak, as rehydration is the priority. CTCs in most humanitarian settings, including in our study site, are not sufficiently equipped for an adequate assessment and management of other health conditions cholera patients may present with, including chronic morbidities. Ensuring that CTCs offer comprehensive and person-centered care (as opposed to solely dehydration-centered care) might contribute to the reduction of cholera CFR, particularly among the elderly.

Our findings indicate that the only kOCV currently available in the global stockpile (Euvichol-plus) is highly protective against severe cholera and death. The few available studies reporting kOCV effectiveness against severe cholera point to similar levels of protection, ranging from 73% (23 to 91) 4-24 months post-vaccination in Haiti[12] to 48% (16 to 67) in the fourth year post-vaccination in Bangladesh.[13] Despite the relatively small number of deaths limiting more stratified analyses, this study provides the first, insights into kOCV effectiveness against death and suggests that large-scale deployment of kOCVs in preventive vaccination campaigns may substantially contribute to achieving the Global Task Force on Cholera Control's goal of reducing cholera mortality by 90% by 2030.[14]

Conclusion

While the public health community strives to improve the cholera surveillance [15], describing the magnitude and drivers of community and confirmed facility deaths is critical to help correctly target those most at risk and improve patient care and estimates of cholera burden. This study provides a unique insight into confirmed cholera mortality in a resource-constrained and endemic setting. Studies with larger sample sizes, including community surveillance and in different endemicity settings are needed to confirm our findings.

Financial support

This work was supported by the Wellcome Trust and Gavi (GAVI-RFP-2019-062). The funders had no role in study design, data collection and analysis, decision to publish, or preparation of the manuscript.

Potential conflicts of interest

218 All other authors report no potential conflicts.

219 **References**

- 220 1. Kanungo S, Azman AS, Ramamurthy T, Deen J, Dutta S. Cholera. *Lancet* **2022**; 399:1429–1440.
- 221 2. Shikanga O-T, Mutonga D, Abade M, et al. High mortality in a cholera outbreak in western
222 Kenya after post-election violence in 2008. *Am J Trop Med Hyg* **2009**; 81:1085–1090.
- 223 3. Djouma FN, Ateudjieu J, Ram M, Debes AK, Sack DA. Factors Associated with Fatal Outcomes
224 Following Cholera-Like Syndrome in Far North Region of Cameroon: A Community-Based
225 Survey. *Am J Trop Med Hyg* **2016**; 95:1287–1291.
- 226 4. Luquero FJ, Rondy M, Boncy J, et al. Mortality Rates during Cholera Epidemic, Haiti, 2010-
227 2011. *Emerg Infect Dis* **2016**; 22:410–416.
- 228 5. Azman AS, Moore SM, Lessler J. Surveillance and the global fight against cholera: Setting
229 priorities and tracking progress. *Vaccine* **2020**; 38 Suppl 1:A28–A30.
- 230 6. World Health Organization. Weekly epidemiological record. World Health Organization, 22
231 SEPTEMBER 2023, 98 YEAR. Available at: <http://www.who.int/wer>. Accessed 17 October
232 2023.
- 233 7. Global Task Force on Cholera Control (Surveillance Working Group). Interim guidance
234 document on cholera surveillance. GTFCC, 2017. Available at: [https://www.gtfcc.org/wp-](https://www.gtfcc.org/wp-content/uploads/2019/10/gtfcc-interim-guidance-document-on-cholera-surveillance.pdf)
235 [content/uploads/2019/10/gtfcc-interim-guidance-document-on-cholera-surveillance.pdf](https://www.gtfcc.org/wp-content/uploads/2019/10/gtfcc-interim-guidance-document-on-cholera-surveillance.pdf).
236 Accessed 3 August 2023.
- 237 8. Debes AK, Ateudjieu J, Guenou E, et al. Clinical and Environmental Surveillance for *Vibrio*
238 *cholerae* in Resource Constrained Areas: Application During a 1-Year Surveillance in the Far
239 North Region of Cameroon. *Am J Trop Med Hyg* **2016**; 94:537–543.
- 240 9. Farrington CP. Estimation of vaccine effectiveness using the screening method. *Int J Epidemiol*
241 **1993**; 22:742–746.
- 242 10. Ingelbeen B, Hendrickx D, Miwanda B, et al. Recurrent Cholera Outbreaks, Democratic
243 Republic of the Congo, 2008-2017. *Emerg Infect Dis* **2019**; 25:856–864.
- 244 11. Pampaka D, Ciglenecki Z, Alberti K, Olson D. Risk factors of cholera mortality: a scoping
245 review. Global Task Force on Cholera Control (GTFCC) , 2022. Available at:
246 <https://www.gtfcc.org/wp-content/uploads/2023/02/gtfcc-risk-factors-of-cholera-mortality.pdf>.
247 Accessed 14 March 2023.
- 248 12. Ivers LC, Hilaire IJ, Teng JE, et al. Effectiveness of reactive oral cholera vaccination in rural
249 Haiti: a case-control study and bias-indicator analysis. *The Lancet Global Health* **2015**; 3:e162–
250 e168.
- 251 13. Ali M, Qadri F, Kim DR, et al. Effectiveness of a killed whole-cell oral cholera vaccine in
252 Bangladesh: further follow-up of a cluster-randomised trial. *Lancet Infect Dis* **2021**; 21:1407–
253 1414.
- 254 14. World Health Organization. Global Task Force on Cholera Control. Ending Cholera, a Global
255 Roadmap to 2030. World Health Organization, 2017.

- 256 15. GTFCC. Public health surveillance for cholera: Interim guidance. Global Taskforce on Cholera
257 Control (GTFCC), 2023. Available at: [https://www.gtfcc.org/wp-content/uploads/2023/02/gtfcc-](https://www.gtfcc.org/wp-content/uploads/2023/02/gtfcc-public-health-surveillance-for-cholera-interim-guidance.pdf)
258 [public-health-surveillance-for-cholera-interim-guidance.pdf](https://www.gtfcc.org/wp-content/uploads/2023/02/gtfcc-public-health-surveillance-for-cholera-interim-guidance.pdf). Accessed 14 March 2023.

259