

1

Women are Prone to Age-Related aortic Stiffness

Zixuan Meng^{1†}, LeLe Cheng^{2†}, Wenjun Liu¹, Yue Yu¹, Hui Liu⁴, Guolin Yao³, Jian

Yang², Yue Wu^{1*}, Zhijie Jian^{2*}

¹ Department of Cardiovascular Medicine, the First Affiliated Hospital of Xi'an

Jiaotong University, Xi'an 710061, P.R. China

² Department of Radiology, the First Affiliated Hospital of Xi'an Jiaotong University,

Xi'an 710061, P.R. China

³ Department of Radiology, Xi'an Gao Xin Hospital, Xi'an 710075, P.R. China

⁴ Biobank, The First Affiliated Hospital of Xi'an Jiaotong University, Xi'an 710061,

P.R. China

Declaration of interests: All authors declare no competing interests.

†These authors contributed equally to this work.

* Corresponding author

Zhijie Jian, M.D.

Department of Radiology, The First Affiliated Hospital of Xi'an Jiaotong University,

Xi'an 710061, PR China

Tel. 86-13772041327 E-mail: jianzhijie@xjtufh.edu.cn

Yue Wu, Ph.D. M.D.

Department of Cardiovascular Medicine, The First Affiliated Hospital of Xi'an

Jiaotong University, Xi'an 710061, PR China

Tel. 86-18092826334 E-mail: imyuewu@qq.com

NOTE: This preprint reports new research that has not been certified by peer review and should not be used to guide clinical practice.

Short title: Women showed more significant arterial aging.

Total word count: 5188 words.

2 **Abstract**

3 **Aim**

4 To investigate sex differences in the aortic aging by analyzing aortic diameter and
5 tortuosity in different segments of aorta across the age spectrum, using enhanced CT
6 imaging.

7 **Method**

8 Between July 2021 and April 2022, a retrospective study screened patients with chest
9 and abdomen contrast CT images. The outer edge-to-outer edge method was utilized to
10 measure aortic diameters at five aortic levels, while arterial tortuosity of various
11 segments was measured and calculated using imaging software. Mean values were
12 compared at different age groups, including by sex, and correlation with age was
13 determined. To validate the coherence of arterial elasticity and anticipated age-related
14 arterial alterations, a subset of data from a previously published article in BMJ Open
15 was extracted for the purpose of examining the correlation between age and arterial
16 stiffness, stratified by sexes.

17 **Results**

18 208 participants (56.6% men, mean age 60.13 ± 16.33 years old, mean BMI 23.07 ± 4.03
19 kg/m^2 , mean BSA $1.70 \pm 0.19 \text{ m}^2$) were enrolled in this study. The BSA-adjusted aortic

20 diameters showed a positive correlation with age in both sexes, but females
21 demonstrated a more rapid increase in progressive aortic diameters throughout their
22 lifespan than males. In the age groups of 60-69 and above 80 years old, males exhibited
23 significantly larger L1 measurements than females. Conversely, in individuals over 80
24 years old, females displayed greater L3 values compared to their male counterparts.
25 However, no sexual disparities were observed for L2, L4 and L5 across all ages.
26 Females exhibited greater aortic tortuosity in the descending thoracic region compared
27 to males across all age groups, whereas this sex-based distribution of aortic and
28 abdominal tortuosity was only evident among individuals over 40 years old. The
29 tortuosity of the aorta and descending thoracic aorta exhibits a marked increase with
30 advancing age, particularly in females, while a non-significant linear correlation is
31 observed between abdominal aortic tortuosity and age in both genders. BaPWV
32 consistently increased with age in both males and females, but the increase was more
33 significant in females. Although males initially had higher arterial stiffness, females
34 surpassed them as they aged.

35 **Conclusion**

36 Patterns of vascular aging in aortic morphology differ between the sexes across the life
37 course, with women experiencing more significant changes, especially in advanced age
38 groups.

39 **Key words:** aorta aging, arterial diameters, arterial tortuosity, sex disparities.

40 **Abbreviations**

41 AA, abdominal aorta; baPWV, branchial ankle pulse wave velocity; BMI, body mass
42 index; BSA, body surface area; CRP, C-reactive protein; CVD, Cardiovascular diseases;
43 CT, computed tomography; DTA: descending thoracic aorta; eGFR, estimated
44 glomerular filtration rate; HDL, high-density lipoprotein cholesterol; LDL, low-density
45 lipoprotein cholesterol; LV, left ventricular; MESA, Multi-Ethnic Study of
46 Atherosclerosis, MRI, magnetic resonance imaging; VSMCs, vascular muscle cells.

47

48 **Introduction**

49 Cardiovascular diseases (CVD) have been a momentous health issue globally. It is well
50 known that cardiovascular disease mortality increases exponentially with age in both
51 males and females, and is higher in older women(1, 2). In addition, CVD exhibits sex-
52 specific differences with women experiencing a rapid increase in cardiovascular risk
53 and atypical symptoms after menopause(3, 4). This discrepancy may be attributed to
54 higher prevalence of cardiovascular risk factors (e.g., obesity, diabetes) in older women
55 than men in the same age group(5). Compared to these pathological conditions, the
56 understanding of physiological vascular aging as a crucial factor in the development of
57 CVD is less comprehensive(6), and sex differences in the aging process may explain
58 why certain sex are more susceptible to CVD risk factors.

59 Aging causes changes in the morphology of the aorta, leading to tortuosity, dilation,
60 and stiffness(7, 8), which affect the hemodynamics of the aorta, resulting in an increase
61 in cardiac afterload, over-stretching of the aortic wall, and reducing coronary
62 perfusion(9, 10). Eventually, these morphological changes in the aorta could exacerbate
63 atherosclerosis, increased the incidence of ischemic events such as stroke, and
64 aneurysms(11, 12). The progressive age-related changes in aortic anatomy can be
65 measured with many imaging modalities, confirming the existence of significant sex
66 differences in aortic diameter and tortuosity by using enhanced computed tomography
67 (CT) and magnetic resonance imaging (MRI)(13, 14). A cross-sectional study from the
68 Multi-Ethnic Study of Atherosclerosis (MESA), using aorta MRI, had reported that the
69 ascending thoracic aorta diameter increased gradually with aging for both sexes, while

70 after adjusting for body surface area (BSA), women consistently exhibited greater
71 normal values than men across all ages(14).The investigation of age-related changes in
72 the descending aorta using enhanced CT revealed that the tortuosity increases more
73 significantly with age in women than in men(15). However, these studies have only
74 focused on the certain segment of the aorta, targeting either diameter or tortuosity. The
75 role of sex in the aging of overall aortic morphology remains largely unexamined.
76 Therefore, further investigation should be required to explore sex differences in
77 evolutionary trends throughout the lifespan.

78 Our study aimed to investigate sex differences in the aortic aging by analyzing aortic
79 diameter and tortuosity in different segments of aorta across the age spectrum, using
80 enhanced CT imaging.

81 Additionally, we verified our results by examining the relationship between arterial
82 stiffness and age from BMJ Open data to gain a comprehensive understanding of adults
83 aortic aging for both sexes.

84 **Materials and Methods**

85 **Study population and data collection**

86 A retrospective study was conducted at the First Affiliated Hospital of Xi'an Jiaotong
87 University, focusing on patients who underwent chest and abdomen contrast CT
88 imaging between July 2021 and April 2022. The study excluded patients who had
89 previously been diagnosed with hypertension, diabetes, or kidney disease, as well as
90 those who had aneurysms, dissection, vascular malformation, or variation on CT scan.
91 Inadequate quality CT scans with significant artifacts were also excluded. Finally,

92 individuals with insufficient clinical data for analysis were excluded from the study.

93 Multiple demographics were obtained from the medical history records, including age,
94 sex, weight, height, and body mass index (BMI). Meanwhile, we standardized the aorta
95 diameter and tortuosity by BSA to exclude the effect of diverse body shapes on the data
96 analysis. BSA was calculated by Dubois formula 1 which was referred as $BSA (m^2) =$
97 $0.007184 \times [\text{height (cm)}^{(0.725)}] \times [\text{weight(kg)}^{(0.425)}]$. Current smoking was defined as
98 positive smoking, Related laboratory data including triglycerides, cholesterol, low-
99 density lipoprotein cholesterol (LDL), high-density lipoprotein cholesterol (HDL) and
100 serum glucose were assayed by automated chemistry analyzer. All the laboratory tests
101 were conducted 48 hours before the CT scan. Written informed consent was obtained
102 from all study participants, and this study was approved by the ethic committee
103 approval of the First Affiliated Hospital of Xi'an Jiaotong University (Ethical approval
104 number: XJTU1AF2020LSL-018).

105 We also used partial data from a published article in BMJ Open, an open-access
106 scientific journal, named “Association between serum γ -glutamyltranspeptidase and
107 atherosclerosis: a population-based cross-sectional study” which provides access to the
108 original data(16). This cross-sectional study was performed at the Medical Health
109 Checkup Center of Murakami Memorial Hospital, Gifu city, Japan from March 2004 to
110 December 2012. 1445 participants receiving a medical health check-up program
111 including pulse wave velocity and abdominal ultrasonography were screened. The
112 patients’ personal information in the original data is anonymous, therefore informed
113 consent was not required. Data such as age, sex, and branchial ankle pulse wave

114 velocity (baPWV) are extracted from this article to analyze the sex disparities in the
115 association between age and baPWV.

116 **Assessment of aortic diameters and tortuosity index calculation**

117 Two 256-slice CT scanners, namely the Philips Brilliance iCT from Medical Systems
118 in Best, The Netherlands, and the Revolution CT from GE Healthcare in Milwaukee,
119 WI, were utilized to conduct a thoracoabdominal enhanced CT scan. The scan
120 encompassed the area from the lung apices to the iliac crest and was performed without
121 ECG gating. The data were subjected to analysis using a standard post-processing
122 workstation (uInnovation-CT, R001, United Imaging Healthcare, Shanghai, China)
123 equipped with commercially available volume viewer software. The aortic diameter
124 was measured at five distinct levels, namely the ascending aorta (L1), situated 1cm
125 distal to the sinotubular junction; the descending aorta (L2), aligned with L1; the
126 intersection of aorta and diaphragm (L3); 3cm above the level of the aortic bifurcation
127 (L5), and the midpoint between L3 and L5 (L4), using the outer edge-to-outer edge
128 method (Fig 1A). Next, we calculated the tortuosity of the whole aorta, thoracic aorta,
129 and abdominal aorta separately. Subsequently, the tortuosity of the entire aorta, thoracic
130 aorta, and abdominal aorta was computed individually. A proficient radiologist
131 specializing in cardiovascular imaging accurately identified the aorta of the
132 corresponding segment by pinpointing two points on the corresponding anatomical
133 landmark. As an illustration, the measurement of aortic tortuosity was conducted on the
134 aorta, which was defined as commencing at the aortic valve and terminating at the
135 bifurcation of the iliac artery. Subsequently, an automated centerline was generated

136 between the two points (Fig 1B). To mitigate the impact of varying body shapes on data
137 analysis, we standardized the aorta diameter and tortuosity by BSA.

138 **Statistical analysis**

139 Patients enrolled are divided into different age groups: <40, 40~49,
140 50~59,60~69,70~79, ≥ 80 . All the continuous data in accordance with normality
141 distribution are presented as mean \pm SD and compared by t-test between groups, the
142 Kruskal-Wallis test is used to compare continuous data if not normally distributed. The
143 categorical variables are presented as numbers and percentages, compared by χ^2 test.
144 We also used multiple linear regression analysis to analyze the potential factors
145 associated with aorta aging. The association of BSA-indexed aortic dimensions with
146 aging was assessed by linear regression models in each sex. A p -value < 0.05 was
147 regarded as statistically significant for all statistical tests. All statistical analyses were
148 performed by R software (version 4.0.2).

149 **Results**

150 **Characteristics of participants**

151 A total of 208 participants were enrolled in this study. The average age was 60.13 ± 16.33
152 years old, and 56.6% of participants were men. Participants had a mean BMI of
153 23.07 ± 4.03 kg/m² and BSA of 1.70 ± 0.19 m² (Table 1). Age was similar in females
154 compared with males (females 60.06 ± 16.97 years; males 60.18 ± 15.95 years; $p=0.462$).
155 BMI, BSA, blood pressure, glucose, cholesterol and estimated glomerular filtration rate
156 (eGFR) showed no significant differences between males and females. On the contrary,

157 males exhibited significantly higher levels of urea and creatinine compared to females.

158 The proportion of male smokers was also significantly higher than that of female
159 smokers. The clinical characteristics are summarized in Table 1.

160 **Arterial diameters increased more with age in females than males.**

161 BSA-adjusted aortic diameters at all different levels demonstrated a positive correlation
162 with age in both sexes, indicating that females exhibited a more rapid increase in
163 progressive aortic diameters with aging throughout the life course compared to males
164 (Fig 2). However, at the ages of 60-69 and above 80 years old, L1 was significantly
165 larger in males than in females. The L3 of females over 80 years old was larger than
166 that of males, whereas there were no sexual disparities observed for L2, L4 and L5
167 across all ages (Supplementary figure 1, Table 2).

168 **More remarkable age-related increase of segmental aortic tortuosity in females.**

169 Regarding the BSA-corrected aortic tortuosity index, a statistically significant
170 difference was observed between genders across the majority of age groups. (Table 3).
171 Among all age groups, females exhibited greater tortuosity in the descending thoracic
172 aorta than males. Yet this sex distribution in the aorta and abdominal aorta appeared in
173 people over 40 years (Supplementary figure 2). As individuals age, there is a noticeable
174 increase in the tortuosity of the aorta and descending thoracic aorta, especially in
175 females. However, there is no significant linear correlation between abdominal aortic
176 tortuosity and age in either sex (Fig 3).

177 **More remarkable age-related increase of arterial stiffness in females.**

178 We also analyzed the association between age and baPWV, which is regarded as an
179 indicator of arterial stiffness in different sexes. The pattern was similar to that of aortic
180 tortuosity. The study found that baPWV increases with age in both males and females,
181 but the increase is more pronounced in females. Although males initially showed higher
182 arterial stiffness, females eventually surpassed them as they aged. (Fig 4).

183 **Discussion**

184 Vascular aging is an inevitable and progressive process, especially age-related changes
185 in the arteries affect cardiovascular remodeling and the function of various organs
186 throughout the body, as the physician Thomas Sydenham posited in the 17th century,
187 “a man is as old as his arteries”(17). Meanwhile, the sexual dimorphism in the CVD
188 prevalence has garnered more attention in recent years. Furthermore, investigations into
189 sex differences in cardiovascular aging, a major risk factor for cardiovascular disease,
190 have commenced. Our study unveiled the sexual dimorphism in age-related
191 morphological changes of the whole aorta, in which women experience more
192 significant arterial changes as aging compared to men, especially in terms of tortuosity.
193 To validate our results on sex morphological differences in arteries, we also examined
194 the age-related changes of baPWV in various sexes using a public database and found
195 that the same intersexual difference was present in arterial elasticity.
196 This sex difference does not arise accidentally. Coutinho and Dart et al. demonstrated
197 that women were more prone to developing greater pulse pressure and arterial stiffness

198 with aging(18, 19). A study conducted by Cheng et al. showed a similar sex-specific
199 trend in left ventricular wall thickness with aging. Men have greater absolute values of
200 left ventricular (LV) wall thickness at all ages than women. While after adjusting for
201 body size, women got a greater increase in LV wall thickness, especially when
202 coexisting with other risk factors like hypertension and diabetes(20). Regarding cardiac
203 function, the age-related increase of LV ejection fraction and diastolic dysfunction are
204 also more remarkable in women(21, 22). The finding of anatomical aging in women in
205 our study reflected by a more tortuous, dilated aorta and stiffness, may offer insight into
206 sex-heterogeneity in cardiovascular function.

207 The sex disparity in age-related morphological changes of a particular aortic segment
208 has garnered attention in recent years. The MESA Study indicated that the diameter of
209 the ascending aorta increased with age. After adjustment for BSA, the normal value of
210 females was larger than that of males in all age groups(14). Studies on the aortic arch
211 found that aortic diameters and length were higher in men than in females, tortuosity
212 index remained similar for both sexes(23). The results of the Rotterdam study on age-
213 related changes in thoracic aortic diameter showed that the diameters of the ascending
214 and descending thoracic aorta were larger in men than in women, after adjustment for
215 body size(24). However, the aforementioned study only focused on sex differences in
216 age-related changes in the structure of segmental arteries and did not provide a complete
217 understanding of how age affects the structure of the entire aorta. Our findings indicate
218 that there is no significant difference in the diameter of the abdominal aorta, ascending
219 aorta, and descending thoracic aorta between males and females until the age of 80.

220 However, after 80 years of age, women have larger diameters in their abdominal aortas
221 and lower ends of their descending thoracic aortas compared to men. In addition, after
222 the age of 40 years old, the tortuosity of all aortic segments was significantly greater in
223 women than in men. This suggests that the sex difference in aorta aging is
224 predominantly manifested in tortuosity rather than diameter. Female's arterial
225 remodeling in the longitudinal direction is more significant than male during the
226 lifespan. The density of smooth muscle and elasticity of elastic fibers and collagen
227 fibers in the middle layer of the vessel wall are responsible for arterial expansion,
228 contraction, and stress distribution, wherein reduced elastin is associated with the
229 lengthening of the aorta(25). Therefore, sex differences in age-related changes in aortic
230 wall microstructure should be concerned in subsequent studies. On the other hand,
231 when combined with our analysis of the age-dependent changes in baPWV across sexes
232 using a public database, it becomes apparent that young and middle-aged men exhibited
233 reduced aortic tortuosity and increased arterial stiffness, resulting in greater pressure on
234 the descending arch due to blood flow scouring, which may contribute to the higher
235 incidence of aortic dissection. This may provide an explanation for the higher incidence
236 of aortic dissections in males as well as the younger age at onset compared to
237 females(26).

238 There is a strong correlation between age and aortic regional diameter in our study, with
239 each part of the aorta increasing in diameter as individuals age, regardless of sex. We
240 also noted that women experienced a more rapid expansion of their aortic diameter
241 compared to men. Specifically, we observed that the diameter of the descending aorta

242 to the middle segment of the abdominal aorta changed more significantly. Besides, age-
243 specific alterations were observed in both whole aortic and descending thoracic aortic
244 tortuosity, but not in abdominal aortic tortuosity. The results of this study indicate the
245 importance of taking regional variations into account while studying aortic ageing.
246 Additionally, it suggests that when evaluating vascular ageing, it may be more effective
247 to focus on the morphology of the descending aorta.

248 Although our observational study didn't demonstrate the specific mechanism by which
249 sex directly influences the geometry of aortic aging, it is possible to argue from the
250 results that estrogen plays an important role(27). In general, estrogen exerts a protective
251 effect on vascular wall in premenopausal women. Estrogen protects the vascular wall
252 in premenopausal women with receptors highly expressed in endothelial and vascular
253 smooth muscle cells throughout the human body(28). The mechanism behind estrogen-
254 induced vasorelaxation is believed to involve the interaction of estrogen with the
255 vascular smooth muscle, endothelial cells, and the vessel wall(29, 30). Relevant
256 research has found that estrogen can exert cardiovascular protective effects by
257 inhibiting the intravascular accumulation of collagen and the proliferation of vascular
258 muscle cells (VSMCs)(27). Our study reveals a more significant age-related change in
259 the aorta among women, particularly middle-aged and older women, suggesting an
260 innate effect of sex on aortic aging. The decline in estrogen levels after menopause may
261 accelerate this process. More research is warranted to elucidate the concrete
262 mechanisms.

263 The findings of this study should be interpreted with caution due to several limitations.

264 Firstly, the data was extracted from a small-scale observational cohort study conducted
265 at a single center, which may limit the generalizability of the results. Additionally,
266 confounding factors may have influenced the outcomes. Secondly, non-ECG gating
267 contrast CT was used to measure aortic diameters and tortuosity, which did not consider
268 the impact of contraction and diastole on aortic morphologies. As a result, the accuracy
269 of the measurements may be limited. Inevitably, some of our subjects had malignant
270 tumors which may affect the morphology of the aorta. To validate our findings and
271 illustrate the underlying mechanisms, it is imperative to conduct larger-scale surveys
272 with multi-center involvement and high-precision measurements of the normal
273 population.

274 **Conclusion**

275 Patterns of vascular aging in aortic morphology differ between the sexes across the life
276 course, with females experiencing more significant changes, particularly in advanced
277 age groups. This implies that female arteries are more vulnerable to aging. Therefore,
278 it is crucial to prioritize effective prevention strategies for vascular aging and related
279 diseases, focusing on females who face greater disparities and stand to benefit most
280 from preventive measures.

281 **Acknowledgements**

282 Zhijie Jian and Yue Wu conceived and designed the research; Lele Cheng and Zixuan
283 Meng analyzed and interpreted the patient data; Guolin Yao and Jian Yang was
284 responsible for the quality control of the CT scans; Hui Liu and Yue Yu collected

285 clinical data; Lele Cheng and Zixuan Meng performed statistically analysis and drafting
286 of the manuscript; Wenjun Liu, Zhijie Jian, Yue Yu and Yue Wu revised manuscript;
287 Zhijie Jian and Yue Wu had primary responsibility for final content. All authors read
288 and approved the final manuscript.

289 **Data Availability Statement**

290 The datasets analyzed during the current study are available from the corresponding
291 author on reasonable request.

292 **Ethics Statement**

293 The studies involving human participants were reviewed and approved by the Ethics
294 Committee approval of the First Affiliated Hospital of Xi'an Jiaotong University. The
295 patients/participants provided their written informed consent to participate in this study.

296 **Source of Funding**

297 This work was supported by the National Natural Science Foundation of China
298 (82200500), the Institutional Foundation of The First Affiliated Hospital of Xi'an
299 Jiaotong University (2021ZYTS-01, 2021QN-03), and the Foundation of Key Research
300 and Development Plan of Shaanxi Province of China (2023-YBSF-403).

301 **Disclosures**

302 None.

303

304 **References**

- 305 1. Lozano R, Naghavi M, Foreman K, Lim S, Shibuya K, Aboyans V, et al. Global
306 and regional mortality from 235 causes of death for 20 age groups in 1990 and 2010: a
307 systematic analysis for the Global Burden of Disease Study 2010. *Lancet*.
308 2012;380(9859):2095-128.
- 309 2. North BJ, Sinclair DA. The intersection between aging and cardiovascular disease.
310 *Circ Res*. 2012;110(8):1097-108.
- 311 3. Stehli J, Dinh D, Dagan M, Duffy SJ, Brennan A, Smith K, et al. Sex Differences
312 in Prehospital Delays in Patients With ST-Segment-Elevation Myocardial Infarction
313 Undergoing Percutaneous Coronary Intervention. *J Am Heart Assoc*.
314 2021;10(13):e019938.
- 315 4. Ji H, Kim A, Ebinger JE, Niiranen TJ, Claggett BL, Bairey Merz CN, et al. Sex
316 Differences in Blood Pressure Trajectories Over the Life Course. *JAMA Cardiol*.
317 2020;5(3):19-26.
- 318 5. Cifkova R, Pitha J, Lejskova M, Lanska V, Zecova S. Blood pressure around the
319 menopause: a population study. *J Hypertens*. 2008;26(10):1976-82.
- 320 6. Xu X, Wang B, Ren C, Hu J, Greenberg DA, Chen T, et al. Recent Progress in
321 Vascular Aging: Mechanisms and Its Role in Age-related Diseases. *Aging Dis*.
322 2017;8(4):486-505.
- 323 7. Schmidt-Trucksäss A, Grathwohl D, Schmid A, Boragk R, Upmeier C, Keul J, et
324 al. Structural, functional, and hemodynamic changes of the common carotid artery with
325 age in male subjects. *Arterioscler Thromb Vasc Biol*. 1999;19(4):1091-7.

- 326 8. Eigenbrodt ML, Bursac Z, Rose KM, Couper DJ, Tracy RE, Evans GW, et al.
327 Common carotid arterial interadventitial distance (diameter) as an indicator of the
328 damaging effects of age and atherosclerosis, a cross-sectional study of the
329 Atherosclerosis Risk in Community Cohort Limited Access Data (ARICLAD), 1987-
330 89. *Cardiovasc Ultrasound*. 2006;4:1.
- 331 9. Nichols WW, Denardo SJ, Wilkinson IB, McEniery CM, Cockcroft J, O'Rourke
332 MF. Effects of arterial stiffness, pulse wave velocity, and wave reflections on the central
333 aortic pressure waveform. *J Clin Hypertens (Greenwich)*. 2008;10(4):295-303.
- 334 10. Russo C, Jin Z, Takei Y, Hasegawa T, Koshaka S, Palmieri V, et al. Arterial wave
335 reflection and subclinical left ventricular systolic dysfunction. *J Hypertens*.
336 2011;29(3):574-82.
- 337 11. Goldfinger JZ, Halperin JL, Marin ML, Stewart AS, Eagle KA, Fuster V. Thoracic
338 aortic aneurysm and dissection. *J Am Coll Cardiol*. 2014;64(16):1725-39.
- 339 12. Shang K, Chen X, Cheng C, Luo X, Xu S, Wang W, et al. Arterial Tortuosity and
340 Its Correlation with White Matter Hyperintensities in Acute Ischemic Stroke. *Neural*
341 *Plast*. 2022;2022:4280410.
- 342 13. Chen CK, Chou HP, Guo CY, Chang HT, Chang YY, Chen IM, et al. Interobserver
343 and intraobserver variability in measuring the tortuosity of the thoracic aorta on
344 computed tomography. *J Vasc Surg*. 2018;68(4):1183-92.e1.
- 345 14. Turkbey EB, Jain A, Johnson C, Redheuil A, Arai AE, Gomes AS, et al.
346 Determinants and normal values of ascending aortic diameter by age, gender, and
347 race/ethnicity in the Multi-Ethnic Study of Atherosclerosis (MESA). *J Magn Reson*

- 348 Imaging. 2014;39(2):360-8.
- 349 15. Tawfik AM, Sobh DM, Gadelhak B, Sobh HM, Batouty NM. The effect of age and
350 gender on tortuosity of the descending thoracic Aorta. *Eur J Radiol.* 2019;110:54-9.
- 351 16. Fukuda T, Hamaguchi M, Kojima T, Ohshima Y, Ohbora A, Kato T, et al.
352 Association between serum γ -glutamyltranspeptidase and atherosclerosis: a population-
353 based cross-sectional study. *BMJ Open.* 2014;4(10):e005413.
- 354 17. Lakatta EG, Levy D. Arterial and cardiac aging: major shareholders in
355 cardiovascular disease enterprises: Part I: aging arteries: a "set up" for vascular disease.
356 *Circulation.* 2003;107(1):139-46.
- 357 18. Coutinho T, Borlaug BA, Pellikka PA, Turner ST, Kullo IJ. Sex differences in
358 arterial stiffness and ventricular-arterial interactions. *J Am Coll Cardiol.* 2013;61(1):96-
359 103.
- 360 19. Reduced arterial stiffness may contribute to angiotensin-converting enzyme
361 inhibitor induced improvements in walking time in peripheral arterial disease patients:
362 Retraction. *J Hypertens.* 2015;33(12):2552.
- 363 20. Cheng S, Fernandes VR, Bluemke DA, McClelland RL, Kronmal RA, Lima JA.
364 Age-related left ventricular remodeling and associated risk for cardiovascular outcomes:
365 the Multi-Ethnic Study of Atherosclerosis. *Circ Cardiovasc Imaging.* 2009;2(3):191-8.
- 366 21. Gebhard C, Stähli BE, Gebhard CE, Tasnady H, Zihler D, Wischnowsky MB, et al.
367 Age- and gender-dependent left ventricular remodeling. *Echocardiography.*
368 2013;30(10):1143-50.
- 369 22. Gori M, Lam CS, Gupta DK, Santos AB, Cheng S, Shah AM, et al. Sex-specific

- 370 cardiovascular structure and function in heart failure with preserved ejection fraction.
371 Eur J Heart Fail. 2014;16(5):535-42.
- 372 23. Boufi M, Guivier-Curien C, Loundou AD, Deplano V, Boiron O, Chaumoitre K, et
373 al. Morphological Analysis of Healthy Aortic Arch. Eur J Vasc Endovasc Surg.
374 2017;53(5):663-70.
- 375 24. Rueda-Ochoa OL, Bons LR, Zhu F, Rohde S, El Ghouli K, Budde RPJ, et al.
376 Thoracic Aortic Diameter and Cardiovascular Events and Mortality among Women and
377 Men. Radiology. 2022;304(1):208-15.
- 378 25. Le VP, Knutsen RH, Mechem RP, Wagenseil JE. Decreased aortic diameter and
379 compliance precedes blood pressure increases in postnatal development of elastin-
380 insufficient mice. Am J Physiol Heart Circ Physiol. 2011;301(1):H221-9.
- 381 26. Nienaber CA, Fattori R, Mehta RH, Richartz BM, Evangelista A, Petzsch M, et al.
382 Gender-related differences in acute aortic dissection. Circulation. 2004;109(24):3014-
383 21.
- 384 27. Orshal JM, Khalil RA. Gender, sex hormones, and vascular tone. Am J Physiol
385 Regul Integr Comp Physiol. 2004;286(2):R233-49.
- 386 28. Gray GA, Sharif I, Webb DJ, Seckl JR. Oestrogen and the cardiovascular system:
387 the good, the bad and the puzzling. Trends Pharmacol Sci. 2001;22(3):152-6.
- 388 29. Díaz M, Ramírez CM, Marin R, Marrero-Alonso J, Gómez T, Alonso R. Acute
389 relaxation of mouse duodenum [correction of duodenun] by estrogens. Evidence for an
390 estrogen receptor-independent modulation of muscle excitability. Eur J Pharmacol.
391 2004;501(1-3):161-78.

392 30. Nakajima T, Kitazawa T, Hamada E, Hazama H, Omata M, Kurachi Y. 17beta-
393 Estradiol inhibits the voltage-dependent L-type Ca²⁺ currents in aortic smooth muscle
394 cells. *Eur J Pharmacol.* 1995;294(2-3):625-35.

395

Tables

Table 1 Characteristics of participants by sex.

Variables	All participants (N=208)	Male (n=124, 56.6%)	Female (n=84, 43.4%)	<i>p</i> value
Age, years	60.13±16.33	60.18±15.95	60.06±16.97	0.959
BMI, kg/m ²	22.86(20.59,25.39)	23.61±4.11	22.27±3.80	0.019
BSA, m ²	1.71±0.19	1.79±0.16	1.57±0.16	< 0.001
Current smoking	76 (36.5%)	75 (60.5%)	1 (1.2%)	< 0.001
SBP, mmHg	122(112,134.75)	124.52±12.49	123.52±18.57	0.549
DBP, mmHg	75(70,80)	76.55±9.02	74.08±9.40	0.058
White blood cells, 10 ⁹ /L	5.82(4.64,7.17)	5.96(4.64,7.4)	5.50(4.54,7.16)	0.548
Cholesterol, mmol/L	3.97(3.28,4.70)	4.18±1.37	3.83(3.18,4.54)	0.133
Albumin, g/L	36.5(33,39.3)	36.71±4.94	36.55(31.05,39.10)	0.151
Total bilirubin	8.9(6.4,13.1)	9.40(6.60,14.05)	8.55(6.25,12.15)	0.132
Indirect bilirubin	6.5(4.5,10)	7.10(4.45,10.35)	6.35(4.70,9.70)	0.467
Glucose	4.65(4.12,5.39)	5.22(4.39,6.05)	4.77(4.29,5.70)	0.132
Urea	4.91(4.2,5.94)	5.58(4.58,6.85)	4.84±1.70	< 0.001
Creatinine	56(49,66)	62.50(54,72)	50.15±11.73	< 0.001
eGFR	101.98±21.15	102.87±20.68	100.85±21.90	0.623

BMI: body mass index; BSA: body surface area; SBP: systolic blood pressure; DBP: diastolic blood pressure; CRP: C-reactive protein; eGFR: estimated glomerular filtration rate.

Table 2 Sex disparities in BSA-adjusted aortic diameters among different age groups.

BSA-adjusted				
aortic diameters	Age groups	Male	Female	<i>p</i> value
L1	<40	16.35±1.60	16.73±2.74	0.928
	40-49	16.40±2.06	17.75±1.79	0.116
	50-59	17.86±1.62	19.08±1.99	0.069
	60-69	17.94±2.17	20.23±2.16	0.003
	70-79	18.85±2.52	21.28±3.87	0.054
	≥80	18.39±2.27	21.68±2.80	0.007
L2	<40	12.03±1.55	11.61±1.54	0.833
	40-49	12.12±1.28	12.42±0.28	0.561
	50-59	12.85±1.07	13.28±1.04	0.281
	60-69	13.15±1.48	13.96±1.53	0.095
	70-79	13.90±1.69	14.54±1.64	0.267
	≥80	14.66±1.93	15.36±1.98	0.462
L3	<40	10.72±1.64	10.32±1.37	0.487
	40-49	11.13±1.35	11.74±1.41	0.125

	50-59	12.24±0.93	12.51±1.35	0.377
	60-69	12.44±1.47	12.93±1.54	0.384
	70-79	13.36±1.64	14.15±2.05	0.292
	≥80	13.01±2.07	15.65±2.48	0.014
<hr/>				
L4	<40	8.10±0.97	7.51±0.94	0.134
	40-49	8.38±1.17	8.33±1.06	0.955
	50-59	8.97±1.02	8.67±0.77	0.257
	60-69	9.13±1.05	9.28±1.10	0.811
	70-79	9.74±1.36	9.68±1.23	0.989
	≥80	9.73±1.22	10.53±1.49	0.193
<hr/>				
L5	<40	8.10±0.90	7.46±0.68	0.091
	40-49	8.38±1.34	8.26±0.74	0.750
	50-59	8.71±0.92	8.64±0.71	0.779
	60-69	8.88±1.10	8.99±1.02	0.772
	70-79	9.57±1.37	9.84±1.64	0.692
	≥80	9.35±1.59	10.00±1.02	0.145

Table 3 Sex disparities in BSA-adjusted tortuosity index among different age groups.

BSA-adjusted				
tortuosity	Age groups	Male	Female	<i>P</i> value
index				
The tortuosity	<40	0.94±0.14	1.06±0.23	0.069

of aorta	40-49	0.96±0.13	1.12±0.10	0.002	
	50-59	1.03±0.10	1.13±0.10	< 0.0001	
	60-69	1.06±0.14	1.20±0.23	0.011	
	70-79	1.13±0.19	1.35±0.25	0.009	
	≥80	1.15±0.11	1.45±0.21	< 0.0001	
<hr/>					
The tortuosity of DTA	<40	0.62±0.10	0.69±0.15	0.027	
	40-49	0.60±0.06	0.70±0.07	< 0.0001	
	50-59	0.64±0.05	0.70±0.05	< 0.0001	
	60-69	0.65±0.08	0.77±0.10	< 0.0001	
	70-79	0.68±0.08	0.82±0.13	< 0.0001	
The tortuosity of AA	≥80	0.71±0.07	0.89±0.09	< 0.0001	
	<hr/>				
	<40	0.61±0.11	0.68±0.16	0.157	
	40-49	0.57±0.06	0.65±0.05	< 0.0001	
	50-59	0.59±0.04	0.65±0.05	0.001	
of AA	60-69	0.59±0.04	0.69±0.08	< 0.0001	
	70-79	0.61±0.08	0.72±0.10	0.003	
	≥80	0.60±0.03	0.75±0.10	< 0.0001	

BSA: body surface area; DTA descending thoracic aorta; AA: abdominal aorta.

Figures with figure legends

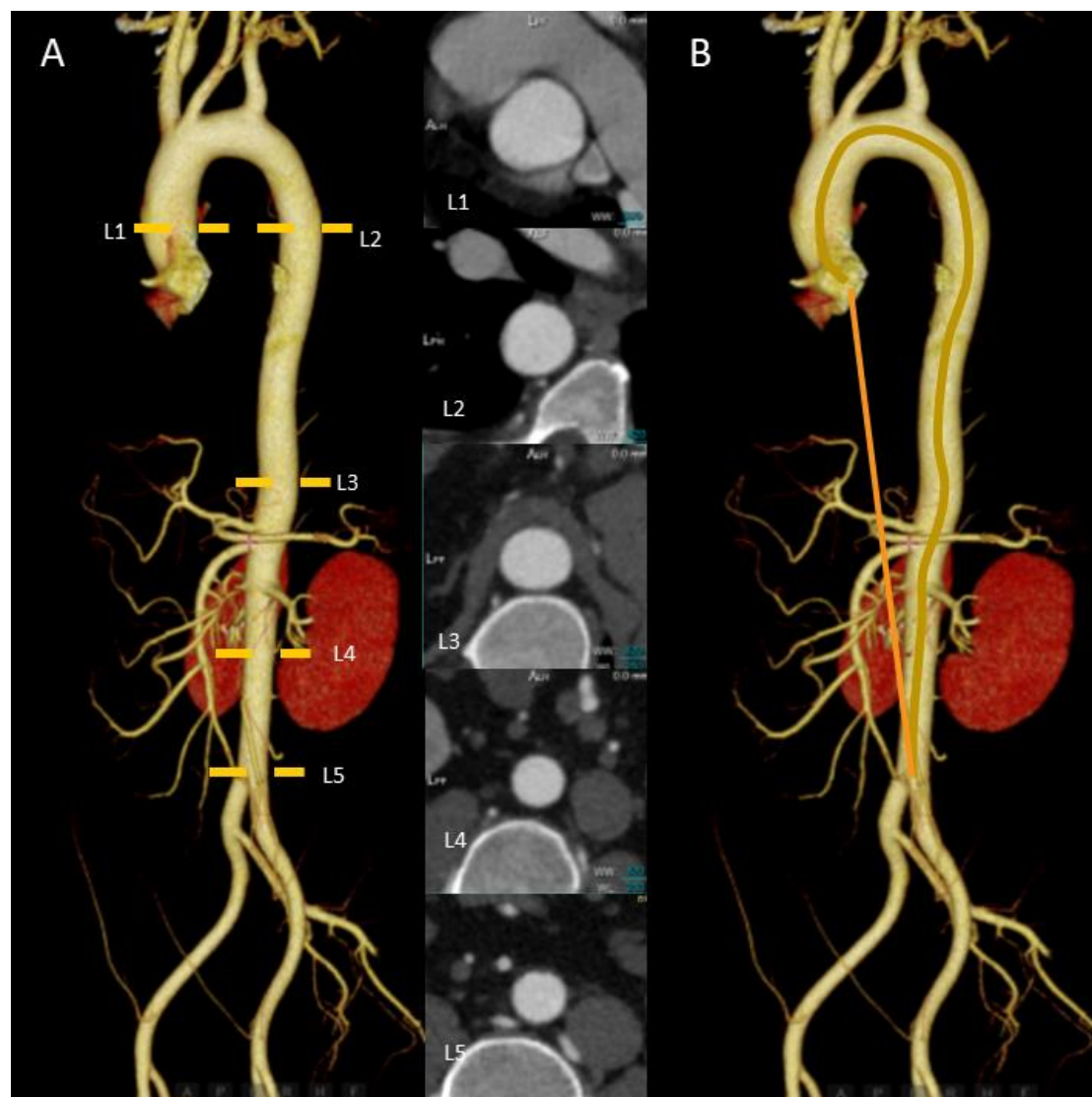


Figure 1. The measurements of aortic morphology. A, Sites of diameter measurements of the aorta; B, Measurement of tortuosity index. The blue line is the true length measurement of the vessel, and the orange line is the straight-line length. The tortuosity index of the aorta is the true length / the straight-line length.

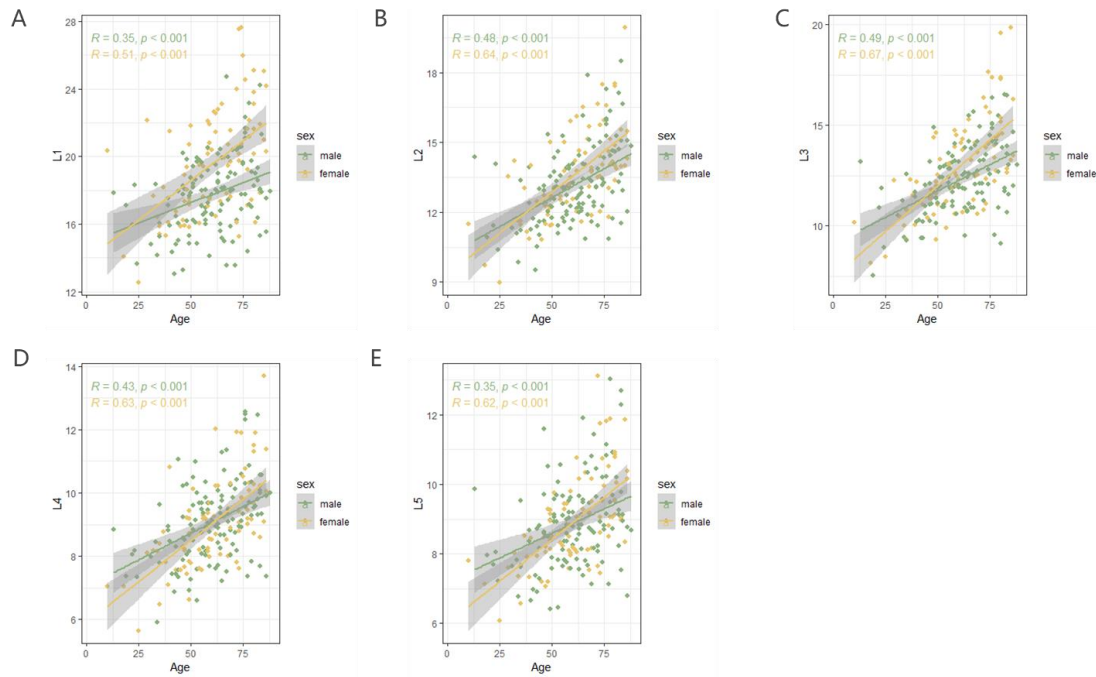


Figure 2. The relationship between BSA-corrected aortic diameters and age according to sex. Linear-regression analysis showed a linear relationship between age and L1(A), L2 (B), L3 (C), L4(D), L5(E) in males and females.

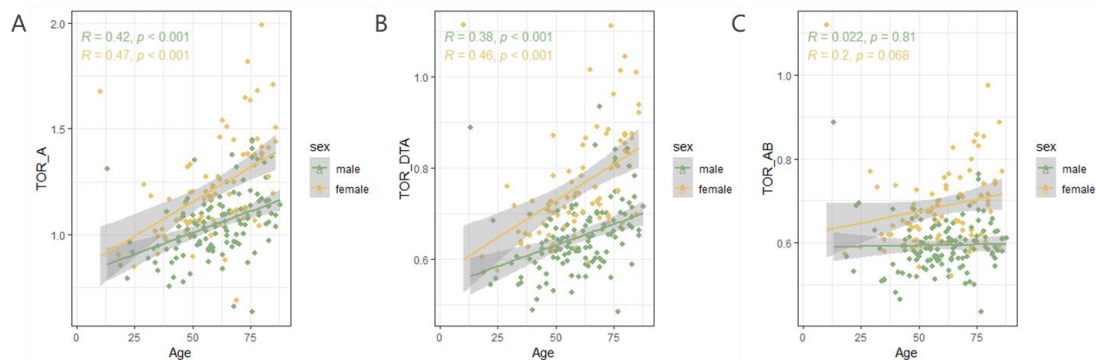


Figure 3. The relationship between BSA-corrected aortic tortuosity and age according to sex. Linear-regression analysis showed a linear relationship between age and aortic tortuosity(A), descending thoracic aortic tortuosity (B) in different genders. Non-linear relationship existed in abdominal aortic tortuosity either in men or women.

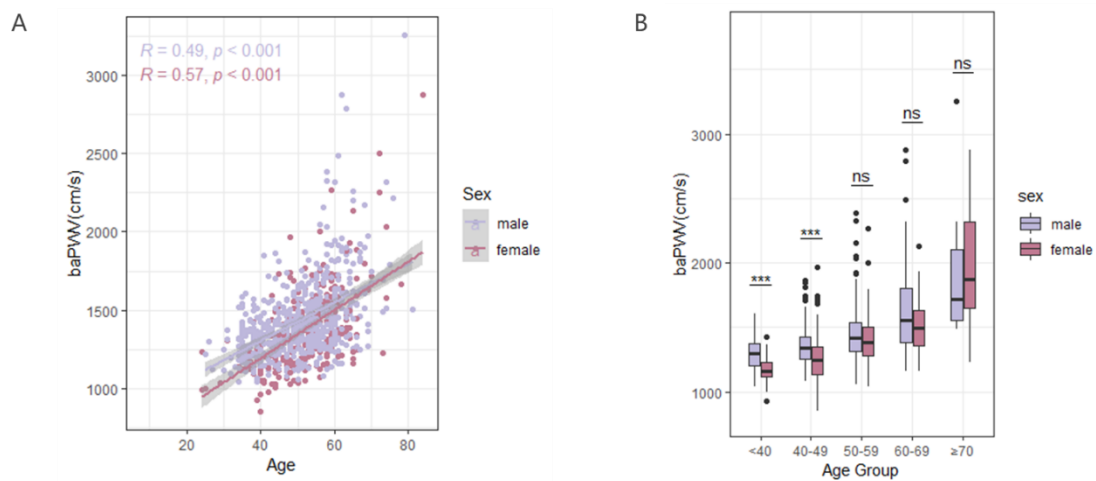


Figure 4. The relationship between baPWV and age according to sex (A). Sex disparities in baPWV in different age groups (B).