

1 **Title:** Increasing transmission of dengue virus across ecologically diverse regions of Ecuador and
2 associated risk factors

3 **Short title:** Increasing transmission of dengue virus across Ecuador and associated risk factors

4 **Authors:** Leah C. Katzelnick^{1*}, Emmanuelle Quentin², Savannah Colston³, Thien-An Ha⁴, Paulina
5 Andrade⁴, Joseph N.S. Eisenberg³, Patricio Ponce⁵, Josefina Coloma^{4*}, Varsovia Cevallos^{5*}

6 **Affiliations:**

7 ¹Viral Epidemiology and Immunity Unit, Laboratory of Infectious Diseases, National Institute of
8 Allergy and Infectious Diseases, National Institutes of Health, Bethesda, MD 20892-3203, USA

9 ²Centro de Investigación en Salud Pública y Epidemiología Clínica, Universidad Tecnológica
10 Equinoccial, Quito, 170129, Ecuador

11 ³Department of Epidemiology, School of Public Health, University of Michigan, Ann Arbor, MI,
12 48109-2029, USA

13 ⁴Division of Infectious Diseases and Vaccinology, School of Public Health, University of
14 California, Berkeley, Berkeley, CA, 94720-3370, USA

15 ⁵Centro de Investigación en Enfermedades Infecciosas y Vectoriales (CIREV), Instituto Nacional
16 de Investigación en Salud Pública (INSPI), Quito, 170136, Ecuador

17 *Corresponding authors: Leah Katzelnick (leah.katzelnick@nih.gov), Josefina Coloma
18 (colomaj@berkeley.edu), and Varsovia Cevallos (vcevallos@inspi.gob.ec).

19 ABSTRACT

20

21 The distribution and intensity of viral diseases transmitted by *Aedes aegypti* mosquitoes, including
22 dengue, have rapidly increased over the last century. Ecuador is an interesting country to study
23 drivers of dengue virus (DENV) transmission given it has multiple ecologically and
24 demographically distinct regions. Here, we analyze province-level age-stratified dengue
25 prevalence data from 2000-2019 using catalytic models to estimate the force of infection of DENV
26 over eight decades and across provinces in Ecuador. We found that provinces established endemic
27 DENV transmission at different time periods. Coastal provinces with the largest and most
28 connected cities had the earliest and highest increase in DENV transmission, starting around 1980
29 and continuing to the present. In contrast, remote and rural areas with reduced access, like the
30 northern coast and the Amazon regions, experienced a rise in DENV transmission and endemicity
31 only in the last 10 to 20 years. The newly introduced chikungunya and Zika viruses have distinct
32 age-specific prevalence distributions consistent with recent emergence across all provinces. We
33 evaluated factors to the resolution of 1 hectare associated with geographic differences in vector
34 suitability and arbovirus disease in the last 10 years by modeling 11,693 *A aegypti* presence points
35 and 73,550 arbovirus cases. In total, 56% of the population of Ecuador lives in areas with high risk
36 of *Aedes aegypti*. Most suitable provinces had hotspots for arbovirus disease risk, with population
37 size, elevation, sewage connection, trash collection, and access to water as important determinants.
38 Our investigation serves as a case study of the changes driving the expansion of DENV and other
39 arboviruses globally and suggest that control efforts should be expanded to semi-urban and rural
40 areas and to historically isolated regions to counteract increasing dengue outbreaks.

41 **AUTHOR SUMMARY**

42

43 The factors driving the increasing burden of arboviruses like dengue virus are not fully understood.

44 In this study, we measured changes in dengue virus transmission intensity and arbovirus disease

45 risk across Ecuador, an ecologically and demographically diverse South American country. We

46 found that differences in the distribution of dengue cases could be explained by changes in

47 transmission of dengue virus over time: transmission was limited to coastal provinces with large

48 cities between 1980-2000, expanding thereafter to higher elevation areas and ecologically suitable

49 but previously geographically and socially isolated provinces. We also used species and disease

50 distribution mapping to show that both urban and rural areas in Ecuador are at medium to high risk

51 for *Aedes aegypti* presence and arbovirus disease risk, with population size, precipitation,

52 elevation, sewage connection, trash removal, and access to water as strong predictors. Our

53 investigation reveals changes driving the expansion of dengue and other arboviruses globally and

54 provides an approach for identifying areas at early stages of establishing endemic transmission

55 that should be targeted for intense preventative efforts to avert future epidemics.

56 INTRODUCTION

57

58 Arboviruses transmitted by the *Aedes aegypti* mosquito (Culicidae), including the flaviviruses
59 yellow fever virus, dengue viruses 1-4 (DENV1-4), and Zika virus (ZIKV) and alphavirus
60 chikungunya virus (CHIKV), infect millions of people globally each year and cause a spectrum of
61 life-threatening diseases with long-term sequelae, including hemorrhagic fevers, arthritis, and
62 severe congenital abnormalities [1, 2]. In the 19th and 20th centuries, explosive epidemics of
63 arboviral disease primarily affected large population centers in tropical regions but in the 20th into
64 the 21st century, arboviruses transmission worsened in previously affected areas and expanded into
65 new regions [3-5]. As a result, dengue is one of the few tropical diseases with an increasing global
66 burden over the last 20 years [6]. The distribution of other arboviruses has also increased over the
67 last ten years as ZIKV and CHIKV were introduced to the Americas and caused back-to-back
68 continent-wide pandemics [7, 8].

69

70 Tracking factors driving the global expansion of arboviruses like DENV is limited by the quality
71 of disease surveillance. In many regions, dengue prevalence remains low but whether this is
72 attributable to low reporting rates as opposed to low disease burden is difficult to determine. Recent
73 and historical work suggests that the age distribution of incident cases is a more accurate measure
74 of transmission intensity and is more robust to common variations in surveillance quality than
75 aggregate case count data [9-11]. Specifically, the force of infection (FoI), defined as the per-capita
76 rate at which susceptible individuals become infected in a population within a given period, can
77 be directly estimated from age-stratified prevalence data and provides a useful measure of

78 transmission intensity. Vector surveillance combined with statistical prediction methods of climate
79 and other factors can also serve as an early warning system for human dengue outbreaks [12, 13].

80
81 The ecological and demographic drivers of arboviral disease can be studied within a single diverse
82 country like Ecuador, a South American country with multiple distinct regions capable of sustained
83 arbovirus transmission. Both the tropical coastal lowlands to the east and the Amazon to the west
84 have suitable conditions for *Aedes aegypti* but are divided geographically by the Andean mountains
85 and have limited transportation connectivity. Further, each region is bisected by the equator,
86 resulting in distinct seasonality between north and south and thus offset arbovirus transmission
87 periods.

88
89 Ecuador has a long history of arbovirus transmission, with the first case of yellow fever recorded
90 in 1740 and the first outbreak in 1842 [14, 15]. Between 1946 and 1970, eradication campaigns
91 targeted the vectors for yellow fever and malaria, resulting in a major reduction in *Aedes*
92 populations. *Aedes aegypti* soon returned, followed by the re-introduction of dengue [3]. National
93 dengue outbreaks occurred in Ecuador in 1996, 2000, 2005, 2010, 2012, and 2014 and since 2000,
94 the four DENV serotypes have been detected in all regions [16, 17]. A recent phylogenetic analysis
95 showed both recent and historical introductions of DENV1 and DENV2 in Ecuador that originated
96 from Venezuela and Colombia, while chikungunya was introduced through the Caribbean [18, 19]

97
98 Here, we modeled province-level age-stratified dengue prevalence data from 2000-2019 to
99 estimate changes in the DENV transmission intensity for nearly 80 years and across provinces in
100 Ecuador. We then evaluated factors associated with geographic differences in vector suitability

101 and arbovirus disease in the last ten years by modeling 11,693 *Aedes aegypti* presence points and
102 73,550 arbovirus cases. We identify provinces at different stages of establishing endemic DENV
103 transmission as well as hotspots for vector and disease risk.

104 MATERIALS AND METHODS

105

106 **Ethics statement.**

107 Human subjects data sets were from anonymized public health surveillance data collected by the
108 Ecuadorian Ministry of Health as part of routine care. The Instituto Nacional de Estadística y
109 Censos (INEC) data used in this study is freely available from an institutional website
110 (<https://www.ecuadorencifras.gob.ec/camas-y-egresos-hospitalarios/>) and is completely
111 anonymous. According to the international good clinical and research practice and in accordance
112 with Ecuadorian legislation on clinical investigation, ethical approval by an institutional review
113 board was not required. The public surveillance data collected by the Ecuador Ministry of Health
114 (Sistema Nacional de Vigilancia en Salud Pública Ecuador, ViEpi data) was made available for
115 research purposes without confidential information (anonymous), under the "Organic Law of
116 Transparency and Access to Public Information" (Article 4 of Ley Orgánica de Transparencia y
117 Acceso a la Información Pública, LOTAIP, Law 24 of Article 81 of the Ecuadorian Constitution).

118

119 **Temperature and precipitation data.**

120 Annual province-level temperature and precipitation data from 2000-2019 were derived from the
121 Universidad Tecnológica Equinoccial (UTE)/Centro de Investigación en Salud Pública y
122 Epidemiología Clínica (CISPEC) database. Trend lines were fitted using local weighted regression
123 (LOESS) models. Province level monthly arbovirus case distributions are for dengue, Zika, and
124 chikungunya cases from 2014 and 2017 in the ViEpi database (n=41,777 total cases, described
125 below).

126

127 **Age-stratified dengue prevalence data and catalytic models.**

128 Dengue prevalence was estimated from national surveillance data collected by INEC. The INEC
129 dataset included all discharge data for hospitalized cases classified as vector-borne viral diseases
130 and/or hemorrhagic fevers by International Statistical Classification of Diseases (ICD). Data were
131 available from 2000 to 2019 and were grouped by age, sex, and province. For analysis, ICD codes
132 A90 (Classic Dengue Fever) and A91 (Dengue Hemorrhagic Fever) were grouped as dengue cases
133 (1997 WHO criteria for severe dengue disease). Ages were binned into 18 age groups (<1, 1-4, 5-
134 9, 10-14, 15-19, 20-24, 25-29, 30-34, 35-39, 40-44, 45-49, 50-54, 54-59, 60-64, 65-69, 70-74, 75-
135 78, and ≥ 80 years of age) for analysis.

136

137 To estimate prevalence, we used provincial demographic data as our denominator. National census
138 data from 1991, 2000, and 2010 were available for each province and age group; we used
139 interpolation to estimate the age-specific population size for each year from 2000 to 2019. There
140 were sufficient case counts in all provinces in the coastal region (Esmeraldas, Manabí,
141 Guayas/Santa Elena, El Oro, Pichincha/Santo Domingo de los Tsáchilas, Los Ríos) to enable
142 province-level DENV FoI estimation. Although Santa Elena was separated from Guayas province
143 and Santo Domingo de los Tsáchilas was separated from the Pichincha province in 2007, we leave
144 them as combined provinces in our analyses to maintain consistency across years. Due to lower
145 absolute case counts, we combined the case data for all Amazon provinces: Sucumbíos, Napo,
146 Orellana, Pastaza, Morona Santiago, and Zamora Chinchipe. To evaluate the relative contribution
147 of each age group to the total yearly prevalence, we plotted the age-stratified dengue prevalence
148 normalized by the total prevalence in each year to account for differences in absolute epidemic
149 magnitude. Data were grouped into two periods (2000-2009 and 2010-2019) to visualize temporal

150 changes in transmission. To compare distributions, data were fit with a LOESS curve with 95%
151 confidence intervals. We used the age-adjusted prevalence data to estimate medians and
152 interquartile range of ages by province for each 10-year period.

153

154 We used catalytic models to estimate historical and current FoI of DENV for each province based
155 on age-stratified prevalence using the method described by Rodriguez-Barraquer et al. [9], as
156 follows.

157

158 The fraction susceptible to all four DENV serotypes at age a and time t is:

$$159 \quad x(a, t) = e^{\int_0^a -4\lambda(t-\tau)d\tau}$$

160

161 Where, $\lambda(t)$ is the average serotype-specific FoI and τ is the time since birth. The fraction that
162 has been infected with one serotype and remain susceptible to the other four serotypes (monotypic
163 immune) is:

$$164 \quad z_1(a, t) = 4 \left(e^{-\int_0^a 3\lambda(t-\tau)d\tau} \right) \left(1 - e^{-\int_0^a \lambda(t-\tau)d\tau} \right)$$

165 Consistent with prior analyses, we assume that the age-specific prevalence of dengue is driven by
166 those experiencing their second DENV infection [20-22]. The at-risk population thus consists of
167 individuals with primary DENV immunity, i.e. individuals infected with one DENV serotype but
168 still at risk of infection with any of the other three serotypes. Thus, the age-specific prevalence for
169 dengue is assumed to reflect the monotypic group experiencing their second infection with any of
170 the other serotypes:

$$171 \quad I(a, t) = 3\lambda(t)z_1(a, t)$$

172 The expected number of reported cases at age a and time t , $\Lambda(a, t)$, is a function of prevalence, as
173 well as the population size $P(a, t)$ and reporting rate $\phi(t)$:

174
$$\Lambda(a, t) = I(a, t)P(a, t)\phi(a, t)$$

175 We assume the observed number of reported cases at age a and time t , $C(a, t)$, follows a Poisson
176 distribution with the likelihood:

177
$$\mathcal{L}(C|\lambda, \phi) = \prod_t \prod_a \frac{\Lambda(a, t)^{C(a, t)} e^{-\Lambda(a, t)}}{C(a, t)!}$$

178 Models were fit with Rstan [23] using the Bayesian Markov Chain Monte Carlo framework in R
179 [24]. We ran four independent Markov chains with 10,000 iterations of warmup followed by
180 20,000 iterations for estimating parameters. Parameters were evaluated for convergence using the
181 split \hat{R} statistic (values of 1 were assumed to indicate convergence) as well as visual inspection.
182 All FoI estimates are shown as means with 95% credible intervals. The original authors of this
183 code [9] note that given the large numbers for prevalence, credible intervals may be systematically
184 underestimated.

185

186 **Comparison of dengue, chikungunya, and Zika age-stratified prevalence.**

187 We measured differences in arbovirus age-stratified disease prevalence using the ViEpi dataset.
188 The ViEpi dataset included de-identified individual case information for 2014 (only November to
189 December), 2015 (full year), 2016 (full year), and 2017 (only January to April) meeting the
190 following case definitions: (1) Dengue with Warning Signs or Severe Dengue, (2) chikungunya,
191 and (3) Zika. The dataset included the following information for each case: age, sex, nationality,
192 home district, province, canton, parish, date of illness, whether and how the case was confirmed
193 (laboratory confirmation, clinical, contact case), hospitalization status, and outcome of case. Cases
194 were grouped by the same age categories as indicated above for the INEC dataset. We use

195 suspected, and not just laboratory-confirmed cases, as there is an age-specific bias in the cases that
196 were confirmed. Notably, the prevalence of chikungunya and Zika cases in infants and for Zika,
197 reproductive age individuals, is higher than would be expected, possibly due to greater
198 confirmation in these age groups.

199

200 For our didactic example of CHIKV and ZIKV FoI, we assumed the age-specific prevalence
201 reflects the fully susceptible group experiencing a first infection:

$$202 \quad I(a, t) = \lambda(t)x(a, t)$$

203

204 **Entomological and disease data.**

205 *Aedes aegypti* presence was measured as part of the INSPI-SENESCYT Project “National
206 Vigilance and Early Warning System for Vector Control of Dengue-Yellow Fever” (SATVEC
207 PIC-12-INH-002). *Aedes aegypti* mosquito samples were collected from 2013 to 2018, at 1785
208 collection sites in Ecuador. In total 946 records correspond to collections during the rainy season
209 and 839 during the dry season. Coordinates for all collection records were obtained. Samples were
210 collected and transported to the laboratory for specimen identification. For arbovirus disease
211 mapping, dengue and chikungunya cases reported in the Ministry of Public Health surveillance
212 data in 2015 in the ViEpi dataset were used as a measure of disease presence across Ecuador.

213

214 **Species and dengue case distribution mapping using maximum entropy models.**

215 We used the confirmed vector and disease presence data in maximum entropy models to evaluate
216 the species distributions for *Aedes aegypti* and dengue and Chikungunya across Ecuador using
217 the MaxEnt software (version 3.3.3), available at:

218 https://biodiversityinformatics.amnh.org/open_source/maxent/ [25, 26]. The maximum entropy
219 model uses environmental and social layers to estimate the probability of presence of a disease or
220 species within each raster unit to predict the distribution of a disease or species across the map.
221 MaxEnt was selected because it is widely used, has been proven to be one of the best models for
222 species distributions, and has a GIS interface within the TerrSet GIS software (Clark Labs). We
223 used a similar method to that described previously for characterizing the distribution of *Aedes*
224 *Albopictus* in Ecuador [27]. We trained the model on 75% of presence points, with 25% for
225 validation, and 10 bootstrap repetitions. Model goodness-of-fit was estimated as Area Under the
226 Curve (AUC). Variables previously identified as predictors of arbovirus transmission were
227 included as layers in the model: two physiographic variables (elevation, slope), eight
228 demographic and social variables derived from available census data (literacy, employment,
229 overcrowding, population density, housing condition, water access, sewerage, garbage
230 collection), and three environmental/climatic variables (precipitation, Daytime Land Surface
231 Temperature, and the Enhanced Vegetation Index). All variables were downscaled at a
232 resolution of 1 hectare: regional data disaggregation was based on the density population map for
233 arboviral case points and a uniform indicator at the census tract level for the INEC census
234 database. The input environmental geodatabase was obtained by processing EarthData images
235 (NASA: <https://www.earthdata.nasa.gov/>), with the spatiotemporal series of monthly images
236 from 2010 to 2018 imported and downscaled to Ecuador at 1 hectare resolution. As the series of
237 environmental variables was too large to include in the MaxEnt model, we applied an orthogonal
238 transformation of n-dimensional image data using principal component analysis (PCA) to
239 produce a new set of images (components) that are uncorrelated with one another and ordered
240 with respect to the amount of variation (information) they represent from the original image set.

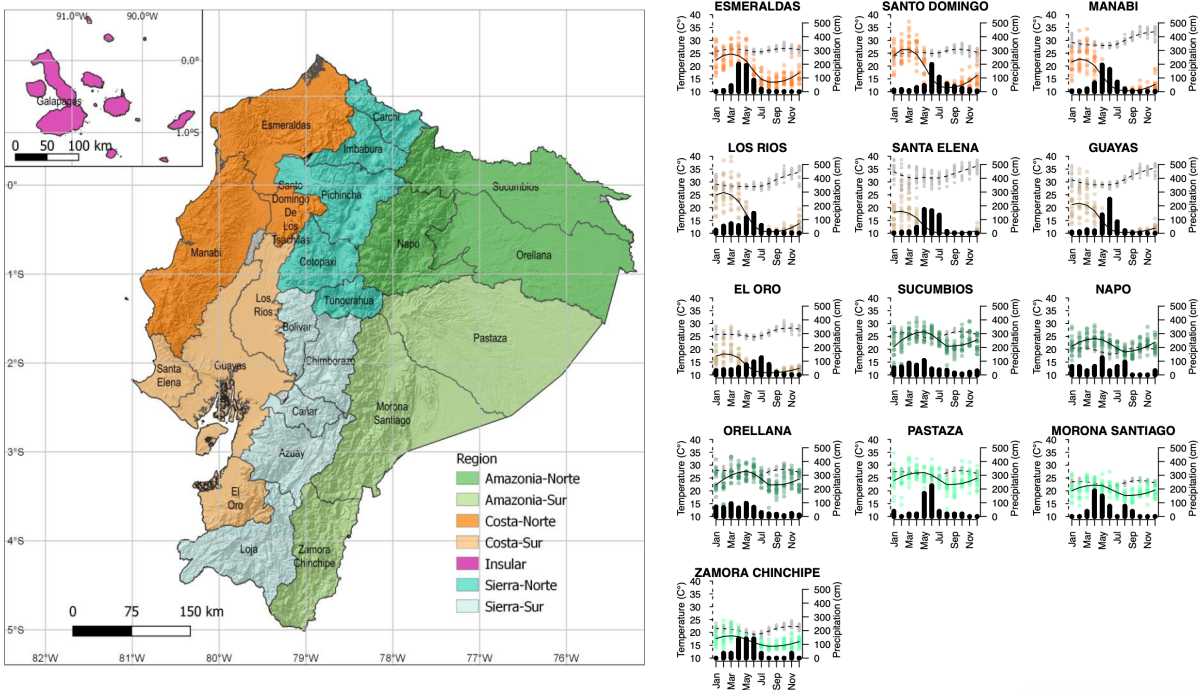
241 These techniques were implemented in TerrSet. As we were working with a cube X-Y-T, the
242 PCA could be adapted to the various dimensions. For the three climatic parameters (temperature,
243 precipitation, and vegetation) we used two PCA components in T mode and 2 PCA loadings in
244 S-mode. Using this approach, the model was not affected by layers that would not be
245 explicative; indeed, it can occur that a variable is useful in the coast and not in the highlands, a
246 benefit of working spatially.

247 RESULTS

248

249 **Geography, climate, and demographic characteristics of Ecuador.**

250 Ecuador is a country in South America of 283,561 square kilometers and a total population size of
251 just over 17 million people. Ecuador is divided down the center by the Andes mountains;
252 provinces in this region are at an altitude too high to support *Aedes* populations and DENV
253 transmission (**Fig. 1**). To the west of the Andes are the coastal lowlands, which border the Pacific
254 Ocean, are densely populated, have high temperatures and humidity, and distinct wet and dry
255 seasons. The provinces of Esmeraldas, Manabí, Santa Elena/Guayas (we combine these two
256 provinces in our analysis), Los Ríos and El Oro consist primarily of lowland regions while Santo
257 Domingo de los Tsáchilas/Pichincha (we combine these two provinces in our analysis) contain
258 both lower and higher elevation areas. Esmeraldas is the only province north of the equator, and
259 both Esmeraldas and higher-elevation Tsáchilas/Pichincha have lower and more stable year-round
260 temperatures than other provinces in this region (**Fig. 1**). In all coastal provinces, the rainy season
261 extends from November through May, with the highest number of arboviral disease cases
262 occurring between March and July. Six of the eight cities in Ecuador with populations larger than
263 200,000 are on the coast, including the major port cities Guayaquil (Guayas) and Manta (Manabí).
264 The six eastern provinces of Ecuador are part of the Amazon, with a tropical climate but lower
265 population density and no cities with more than 120,000 people. Precipitation is high year-round,
266 with slightly more rainfall from March to July and in the northern compared to the southern
267 Amazonian provinces. Consistently, there is less seasonality of arbovirus transmission in the
268 Amazon than the coastal provinces. The Galapagos Islands constitute the fourth region of Ecuador
269 and while cases are sporadically reported, there is little evidence of sustained transmission.

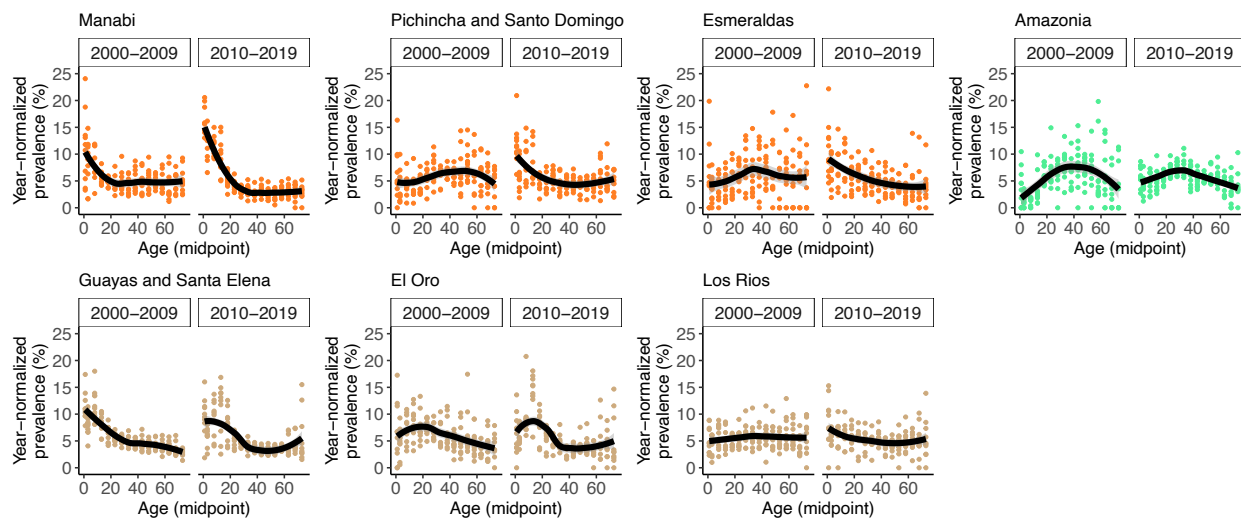


270
 271 **Fig. 1. Geography and arbovirus seasonality of Ecuador. (Left)** Map of Ecuador, colored to
 272 indicate geographic and climate regions (north vs. south; coast, mountains, vs. Amazon). **(Right)**
 273 Temperature (grey dots and dotted lines), precipitation (dots colored by region, solid black line),
 274 and monthly distribution of arbovirus cases (black histograms). Temperature and precipitation
 275 data are shown for 2005-2019, while monthly arbovirus case distributions are dengue, Zika, and
 276 chikungunya cases from 2014 and 2017 in the ViEpi dataset.

277
 278 **Age-distributions of dengue prevalence vary by province and over time.**

279 We first measured temporal and geographic differences in DENV transmission intensity by
 280 estimating age-stratified dengue prevalence for each province between 2000-2019. In general, the
 281 age-distribution of disease reflects the average age at which individuals experience their first
 282 infection. However, because primary DENV infections are less likely to cause symptoms or
 283 disease severe enough to elicit a hospital visit, most cases captured by surveillance represent

284 secondary DENV infections. We estimated dengue prevalence using national surveillance of
285 Dengue Fever and Dengue Hemorrhagic Fever cases and interpolated age-specific province-level
286 population size data. For data visualization, data were grouped into two 10-year periods, 2000-
287 2009 and 2010-2019 (**Fig. 2**).



288
289 **Fig. 2. Age-specific prevalence of dengue, normalized by year, for each province and period.**

290 Data are fitted using LOESS regression with 95% confidence intervals. Data are from the INEC
291 database.

292
293 The median age of the population in each province ranged from 20-26 throughout the 20-year
294 period, with the lowest median age in the Amazon and highest age in Guayas/Santa Elena and
295 Pichincha/Santo Domingo (**Table 1**). However, the first decade of data had different features
296 compared to the second decade of data. For example, from 2000 to 2009, the population-dense
297 coastal provinces of Guayas/Santa Elena, El Oro, and Manabí had the lowest median age of dengue
298 cases (28-36 years) whereas in provinces with higher elevation or that were more rural and
299 inaccessible (Esmeraldas and the Amazon), the median dengue prevalence occurred at older ages
300 (41-43 years). All provinces except Guayas/Santa Elena experienced a drop in median dengue

301 prevalence between 2000-2009 and 2010-2019, with the largest change in Manabí (by 17 years),
302 as well as large changes in Esmeraldas, the Amazon, and Pichincha/Santo Domingo (6-9 years).

303

304 **Table 1. Median and interquartile range (IQR) of population-adjusted dengue prevalence by**
305 **province, from 2000-2009 and 2010-2019.** Median and IQR of the population during the same
306 period are shown for reference.

Province	Prevalence: median (IQR)		Population: median (IQR)	
	2000-2009	2010-2019	2000-2009	2010-2019
Manabí	36 (13-58)	19 (8-48)	24 (12-41)	25 (12-43)
Pichincha/Santo Domingo	43 (25-60)	35 (14-59)	26 (13-42)	26 (13-42)
Esmeraldas	41 (25-59)	32 (14-56)	22 (11-39)	22 (11-40)
Amazonia	43 (27-58)	37 (22-57)	20 (9-36)	21 (10-37)
Guayas/Santa Elena	28 (11-51)	28 (13-58)	26 (13-42)	26 (12-43)
El Oro	32 (16-51)	28 (13-57)	25 (12-42)	26 (13-44)
Los Ríos	41 (22-60)	39 (18-62)	24 (11-41)	25 (12-42)

307

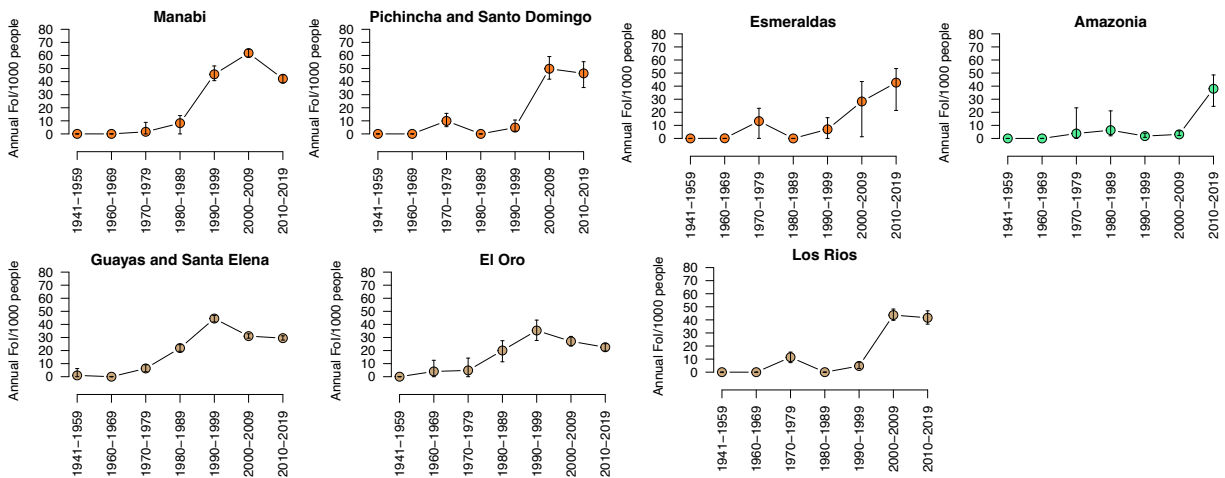
308

309 **Models of age-stratified dengue prevalence reveal historical and geographic changes in**
310 **DENV transmission.**

311 We assumed that the age distributions of dengue prevalence by province were due to both current
312 and historical transmission of DENV in each region. We estimated the FoI of DENV for 10-year
313 increments back to 1941, covering the earliest period when individuals in the dataset were alive.

314 We modeled annual age-stratified dengue prevalence directly using Bayesian models based on the
315 method described by Rodriguez-Barraquer et al. [9]. We assumed the surveillance data reflect
316 prevalence of second DENV infections, as has been assumed previously [20-22]. We observed
317 that all provinces and regions had minimal DENV transmission for the period of 1941 to 1979
318 (**Fig. 3**). Consistent with this observation, from 1946 to 1970, continent-wide *Aedes* eradication
319 campaigns were underway. A program was implemented in 1958 to specifically monitor *Aedes*

320 *aegypti* [3]. No dengue cases were recorded in Ecuador during this time, but *Aedes* successfully
 321 reinfested the cities in Guayas and Manabí between 1977 and 1985. Our FoI models estimated that
 322 between 1980 to 1989, DENV transmission intensity began to rise in Guayas/Santa Elena and El
 323 Oro (**Fig. 3**). Then from 1990-1999, high DENV transmission was observed in Guayas/Santa
 324 Elena, El Oro, and Manabí. These results are consistent with the fact that dengue was first
 325 documented in Ecuador in 1985, and major outbreaks were observed in Guayas in 1988, 1990, and
 326 1993. At this time, dengue was re-emerging across the Americas, and the introduction of multiple
 327 serotypes resulted in the first observed cases of Dengue Hemorrhagic Fever/Dengue Shock
 328 Syndrome [3, 4, 28]. The largest and earliest dengue outbreaks were concentrated in the large
 329 coastal cities in Guayas and Manabí, consistent with our estimated timeline for the re-introduction
 330 of dengue to Ecuador.
 331



332
 333 **Fig. 3. DENV FoI estimates for provinces across Ecuador.** Point estimates are colored by
 334 geographic region, 95% credible intervals are shown.

335

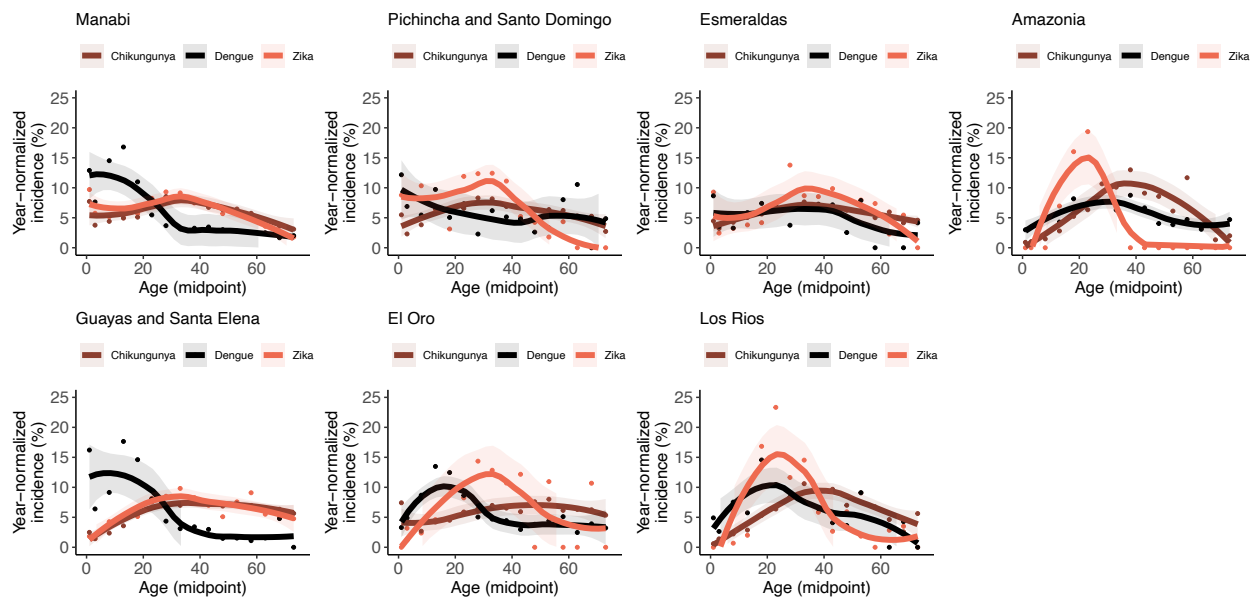
336 Other regions with suitable ecological conditions for DENV transmission in Ecuador have not
337 recorded major epidemics. Consistent with this epidemiological data, we found that the early rise
338 of DENV in the southern coastal provinces was not observed in the northern coastal province of
339 Esmeraldas, the higher elevation coastal provinces of Los Ríos and Pichincha/Santo Domingo de
340 los Tsáchilas, or the Amazon provinces, which had very low levels of DENV transmission from
341 1990-1999 (FoI: ≤ 10 per 1000 people). These provinces had fewer dense urban settings and were
342 more isolated before the year 2000, with limited road infrastructure. Pichincha/Santo Domingo,
343 Los Ríos, and Esmeraldas had high DENV transmission intensity in 2000-2009 and 2010-2019
344 (FoI: 40-50 per 1000 people). The Amazon provinces were most delayed, experiencing a rise in
345 DENV transmission only in the last 10 years (40 per 1000 people). Thus, we observe the provinces
346 of Ecuador at different stages of endemicity, with some only recently experiencing increases in
347 transmission intensity.

348

349 **Age-distributions of recently emerged arboviral diseases reflect risk across ages.**

350 CHIKV was introduced to Ecuador in 2014 and caused a major outbreak in 2015, soon followed
351 by a national Zika epidemic in 2016 [8, 18]. We expected that the age distributions of these new
352 arboviral diseases would be similar across provinces, consistent with their recent introduction. We
353 measured the age and disease-specific prevalence using data from a separate surveillance system,
354 ViEpi, consisting of laboratory-confirmed and suspected cases of chikungunya, Zika, and Dengue
355 with Warning Signs/Severe Dengue observed between 2015 and 2016. Across provinces, Zika and
356 chikungunya prevalence was mid-aged centered, consistent with recent emergence, although in
357 some regions, Zika prevalence was more concentrated in reproductive-age individuals, likely due
358 to a bias in laboratory confirmation of cases (**Fig. 4**). Notably, the age-distributions of chikungunya

359 and Zika prevalence more closely resembled the age-distributions of dengue prevalence in
360 Esmeraldas, Los Ríos, Pichincha/Santo Domingo, and the Amazon, but were starkly different in
361 Guayas/Santa Elena, El Oro, and Manabí. These findings further support the hypothesis that
362 heterogeneity in the age distribution of dengue prevalence across Ecuador reflects historical
363 differences in the time of DENV emergence and the transition to endemicity.
364

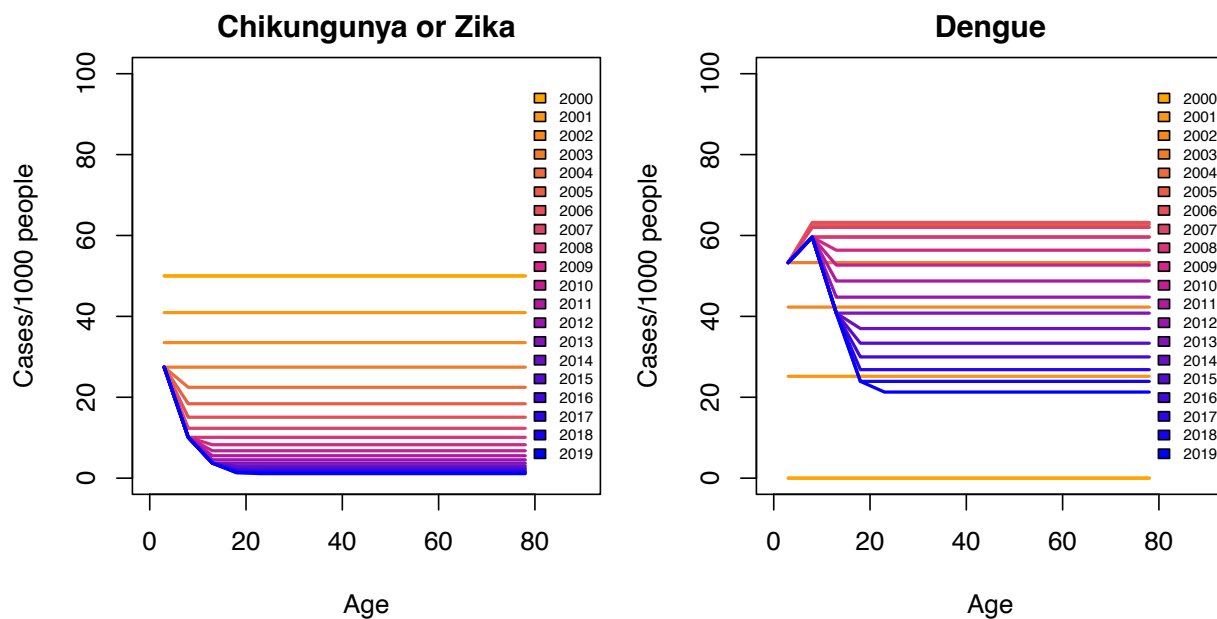


365
366 **Fig. 4. Age-specific prevalence of laboratory-confirmed and suspected Dengue with Warning**
367 **Signs/Severe Dengue, chikungunya and Zika for each province in 2015-2016.** Data are fitted
368 using LOESS regression with 95% confidence intervals. In some provinces, unusual distributions
369 for Zika suggest case-confirmation focused on specific age groups.

370

371

372 It is important to note that the age-specific prevalence distribution for arboviruses such as
373 chikungunya and Zika, where a first infection causes disease, is expected to differ from dengue,
374 where a second infection is most likely to cause disease as illustrated in Figure 5 using a
375 theoretical example (**Fig. 5**). For all three diseases, as years pass since emergence, the age
376 distribution shifts from mid-age distributed to younger ages as older individuals become immune
377 and disease only affects young, naïve individuals. While for chikungunya and Zika, explosive
378 epidemics are observed immediately, for dengue, it takes multiple years before high prevalence
379 is observed across age groups as individuals experience second infections. Further, the shape of
380 the age distribution of cases at endemicity is distinct for dengue compared with chikungunya and
381 Zika, reflecting these differences in the susceptible population.
382



383
384 **Fig. 5. Age-stratified prevalence of different arboviral diseases by time since emergence.**
385 Expected changes in age-specific prevalence for a viral disease that emerged 20 years ago with an
386 annual FoI of 50/1000, assuming the first infection causes disease (e.g. like chikungunya or Zika)

387 vs. when there are four circulating viruses that emerged 20 years ago each with an annual FoI of
388 50/1000 and the second infection causes disease (e.g. like dengue).

389

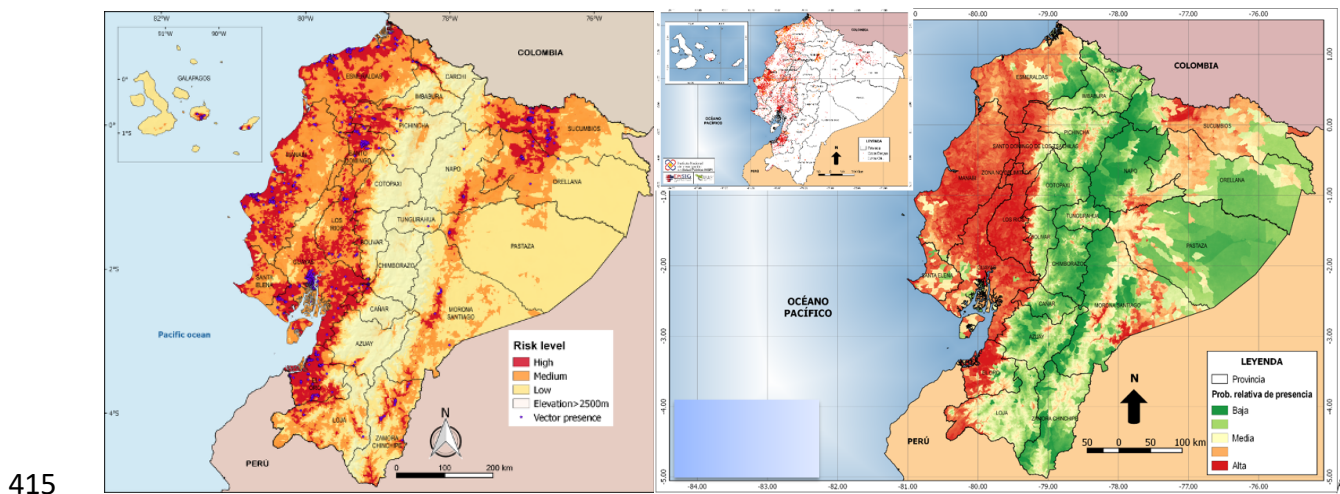
390 **Determinants of *Aedes* and arbovirus risk help explain geographic variation in DENV**
391 **transmission intensity.**

392 To evaluate which environmental, geologic, and demographic factors were associated with the
393 observed geographic differences in DENV transmission intensity, we used maximum entropy
394 models to identify predictors of *Aedes aegypti* and arboviral disease presence data. We sampled
395 immature and adult stages of *Aedes aegypti* mosquitoes in 1785 distinct collection sites,
396 encompassing all 24 provinces in Ecuador, elevation ranging from 0 to 1650 meters above sea
397 level, and during rainy and dry seasons over five years (2013-2018) for a total of n=11,693 distinct
398 samples (**Fig. 6**). The percentage of sites with presence of *Aedes aegypti* in the coastal provinces
399 was higher (35.9%) than in the Amazonia provinces (13.4%) but *Aedes aegypti* was present at
400 higher altitudes in the eastern Amazon basin (1650 meters) than the coastal region (1000 meters).
401 In our maximum entropy models, 55.5% (123,087 km²) of the territory was suitable (medium or
402 high risk) for *Aedes aegypti*. Most of the coastal lowlands had medium risk of for *Aedes aegypti*,
403 with high-risk zones in more populated areas. Almost all of Guayas and El Oro were at high risk,
404 while large sections of Manabí, Esmeraldas, Pichincha/Santo Domingo, and Los Ríos were also at
405 high risk. Much of the Amazon was predicted to be at low risk, although the northern Amazon and
406 Amazon regions closer to the Andes were also at medium to high risk for *Aedes aegypti*.

407

408 For our map of arbovirus disease prevalence, we used dengue and chikungunya cases in 2015
409 (n=73,550) as a measure of disease presence across Ecuador and maximum entropy models with

410 the same predictor variables (**Fig. 6**). The regions identified as being suitable for arbovirus disease
411 matched those identified for *Aedes aegypti* risk: most of the coastal region was at high risk for
412 arbovirus transmission, while similar, although not fully overlapping areas across the Amazon
413 were at medium to high risk. Interestingly, an area in the southern Amazon province of Morona
414 Santiago had higher risk for arbovirus transmission risk than predicted by *Aedes aegypti* maps.



416 **Fig. 6. Maximum entropy geographic models using environmental, geologic, and**
417 **demographic variables to predict *Aedes aegypti* (left) and arboviral disease (right) presence**
418 **data. Mosquito data: immature and adult stages of *Aedes aegypti* mosquitoes at 1785 distinct**
419 **collection sites, encompassing all 24 provinces, elevation ranging from 0 to 1650 meters above**
420 **sea level, and during rainy and dry seasons over five years (2013-2018) for a total of n=11,693**
421 **distinct samples. Arbovirus disease prevalence: national dengue and chikungunya cases in 2015**
422 **(n=73,550).**

423
 424 The principal variables that predicted *Aedes aegypti* presence also predicted arbovirus disease,
 425 including population density (63.3% contribution for *Aedes* risk, 52.8% for arbovirus risk),
 426 garbage collection (14.3% and 7.7%), elevation (11.2% and 19.9%) (**Table 2**). However,
 427 precipitation was a much stronger factor for arbovirus risk (12.8%) than for *Aedes* risk (1.0%).
 428 Both *Aedes* and arbovirus risk were associated to a lesser extent with water access (3.6% and 1.1%)
 429 and sewage connection (1.6% and 2.8%), while only *Aedes* was affected by vegetation (1.8%) and
 430 house quality (0.7%) and arbovirus disease with house crowding (0.7%).

431
 432 **Table 2. Variable importance of risk factors in the *Aedes aegypti* presence data and dengue**
 433 **and chikungunya case presence.**

Aedes model AUC full model: 0.977		Dengue and chikungunya model AUC full model: 0.782	
Variable	Percent contribution	Variable	Percent contribution
Population	63.3	Population	52.8
Garbage collection	14.3	Elevation	19.9
Elevation	11.2	Precipitation	12.8
Water access	3.6	Garbage collection	7.7
Vegetation	1.8	Sewage connection	2.8
Sewage connection	1.6	Water access	1.1
Precipitation	1.0	House crowding	0.7
Housing quality	0.7	Other variables	2.2
Other variables	2.5		

434

435

436 **DISCUSSION**

437

438 In this study, we described changes in the transmission intensity of DENV across ecologically
439 diverse provinces of Ecuador over nearly 80 years and identified multiple environmental,
440 demographic, and social factors associated with the distribution of the vector and arbovirus
441 disease. We found that the highest DENV FoI was observed in the southern coastal provinces over
442 20-30 years ago, whereas regions that were historically more rural and isolated experienced their
443 highest FoI in the last 10 years. Our geographic models show that the coastal provinces and
444 Amazon have high vector and disease risk areas, and that population density, garbage collection,
445 elevation, and precipitation explain the most variation (>10%) in vector and arbovirus
446 distributions. Our estimates of the FoI of DENV complement and enrich the documented record
447 of DENV emergence across Ecuador and serve as a case study of the changes driving the expansion
448 of arboviruses globally.

449

450 We found that DENV transmission in Ecuador increased as dengue resurged across the Americas,
451 first in the southern coastal provinces with major port cities, then to other connected regions in the
452 coastal lowlands. DENV only spread to more isolated regions of Ecuador in the 21st century,
453 possibly driven by increased human movement. Starting near the turn of the 21st century, the
454 government of Ecuador began to heavily invest in roads and infrastructure. The new roads
455 increased connectivity to previously isolated regions, including major cities in Esmeraldas and the
456 Amazon, as well as to more rural areas in all provinces [29, 30]. These changes may have driven
457 the uptick in DENV FoI in Esmeraldas and the Amazon, which were not previously considered
458 high risk areas. Further, higher elevation regions like Pichincha/Santo Domingo and Los Ríos

459 experienced an increase in dengue, possibly due to changes in global temperature expanding the
460 range of *Aedes aegypti* [13]. In total, 55.5% of Ecuador currently has favorable conditions for
461 *Aedes aegypti*, including the provinces we identify here as experiencing increases in DENV
462 transmission intensity in the last 10 years.

463

464 As previously low-population rural areas become increasingly urbanized and connected to other
465 rural areas and to major cities, their role in maintaining transmission and helping reseed epidemics
466 is expected to increase [19, 31]. In Esmeraldas, connectivity first increased with Colombia,
467 consistent with the observation that the DENV serotypes circulating in Esmeraldas between 2010-
468 2014 more closely matched those circulating in Colombia than the rest of Ecuador [17, 19, 29].
469 Lack of infrastructure often tracks with rapid urbanization, and often results in limited water
470 access, garbage collection, and sewage, which are all arboviral disease risk factors.

471

472 The ecological conditions in regions where DENV has recently emerged may further increase
473 DENV intensity. For instance, while in Guayas and Manabí, entomological surveys reveal low
474 vector density during the dry season and larvae proliferation during the wet season [16], a
475 household survey in Esmeraldas found a non-linear relationship between mosquito density and
476 rainfall (unpublished data). Similarly, in the Amazon, there is not as strong a distinction between
477 the wet and dry seasons, potentially enabling sustained arbovirus transmission year-round. The
478 combined effects of Amazonian ecological conditions, urbanization, and population growth are
479 evident in the Amazonian cities of Iquitos, Perú and Manaus, Brazil, where once *Aedes aegypti*
480 and DENV were introduced and the cities were large enough, the conditions were primed for
481 severe epidemics and sustained transmission [32]. In Iquitos, Perú which is mainly accessible by

482 river barge, invasion of the *Aedes aegypti* species was facilitated by these river boats travelling
483 from urban to peri-urban to rural areas [33]. For this reason, similar attention should be paid to the
484 changes caused by the rapidly urbanizing Amazon provinces of Ecuador, which are increasingly
485 affected by population growth, urbanization, and migration due to the expansion of the oil industry
486 [34].

487

488 Our study has several limitations. We were unable to test whether changes in *Aedes* risk were
489 temporally associated with changes in DENV transmission intensity, as data on ecological and
490 mosquito density data were not available before 2013. Further, we were unable to determine
491 changes in the serotype-specific intensity of DENV transmission due to lack of serotype-level case
492 data. We were also unable to quantitatively measure the effect of changes in connectivity between
493 regions and DENV transmission intensity due to lack of available data. Finally, due to low
494 numbers of cases, we were unable to measure transmission changes for each separate province in
495 the Amazon.

496

497 Here, we tracked the changes and drivers of DENV transmission across Ecuador using over 20
498 years of longitudinal case data, detailed entomological measurements, catalytic models of DENV
499 FoI, and maximum entropy models for species distribution modeling. We show that coastal
500 provinces with large, connected cities experiencing the highest and earliest increase in DENV
501 transmission intensity. Areas that remained isolated like the northern coast and the Amazon
502 regions more recently experienced a rise in DENV transmission and endemicity. However, all
503 provinces with suitable ecological conditions were affected by the chikungunya and Zika
504 pandemics and had hotspots for *Aedes* and arbovirus disease risk. Future local and national control

505 strategies should consider the emergence and re-emergence of multiple arboviruses transmitted by
506 *Aedes aegypti* as well as differences in the natural and built environments, including the rapid
507 expansion of vector-borne diseases into areas that previously were minimally affected. As human
508 movement, population growth, urbanization, and climate change intensify, more areas within
509 diverse countries will be affected simultaneously. Thus, surveillance and vector control efforts
510 should learn from the historical dynamics for dengue, Zika, chikungunya, recognizing the potential
511 for novel emerging diseases to follow similar patterns and strategically develop control measures
512 which consider interactions and shared risk factors for these diseases.

513 **Acknowledgment:** We thank the Ecuador Ministry of Health for providing the published dengue,
514 Zika, and chikungunya prevalence data needed for this analysis.

515
516 **Funding:** This research was supported by the Intramural Research Program of the National
517 Institute of Allergy and Infectious Diseases (to LCK) and the National Institutes of Health Grant
518 R01AI323721 (to JE and JC), and the Secretary of Higher Education, Science, Technology and
519 Innovation (SENESCYT) Grant PIC-12-INH-002 (to PP and VC). LCK was supported in part by
520 the Global Health Equity Scholars Program NIH Fogarty International Center training grant
521 D43TW010540. The funders had no role in the study design, data collection and analysis, decision
522 to publish, or preparation of the manuscript.

523
524 **Author contributions:** Conceptualization: LCK, JC, VC, EQ, Formal analysis: LCK, EQ, VC,
525 Data collection and curation: VC, EQ, PP, Methodology: LCK, VC, EQ, PA, PP, JC,
526 Writing-original draft: LCK, SB, T-AH, Supervision/project administration: JC, JE, VC, PP, EQ,
527 Writing-review & editing: all authors.

528
529 **Data availability:** The data sources and programs used for analyses are detailed in the Methods
530 section. The code and data for all force of infection models will be made available on Zenodo at
531 the time of publication.

532
533 **Competing interests:** The authors declare no conflict of interest.

534

535 **REFERENCES**

536

- 537 1. Bhatt S, Gething PW, Brady OJ, Messina JP, Farlow AW, Moyes CL, et al. The global
538 distribution and burden of dengue. *Nature*. 2013;496(7446):504-7. Epub 2013/04/09. doi:
539 10.1038/nature12060. PubMed PMID: 23563266; PubMed Central PMCID: PMCPMC3651993.
- 540 2. Morens DM, Fauci AS. Emerging infectious diseases: threats to human health and global
541 stability. *PLoS Pathog*. 2013;9(7):e1003467. Epub 2013/07/16. doi:
542 10.1371/journal.ppat.1003467. PubMed PMID: 23853589; PubMed Central PMCID:
543 PMCPMC3701702.
- 544 3. Brathwaite Dick O, San Martin JL, Montoya RH, del Diego J, Zambrano B, Dayan GH.
545 The history of dengue outbreaks in the Americas. *Am J Trop Med Hyg*. 2012;87(4):584-93.
546 Epub 2012/10/09. doi: 10.4269/ajtmh.2012.11-0770. PubMed PMID: 23042846; PubMed
547 Central PMCID: PMCPMC3516305.
- 548 4. Gubler DJ. Dengue and dengue hemorrhagic fever. *Clin Microbiol Rev*. 1998;11(3):480-
549 96. Epub 1998/07/17. doi: 10.1128/CMR.11.3.480. PubMed PMID: 9665979; PubMed Central
550 PMCID: PMCPMC88892.
- 551 5. World Health Organization. Global strategy for dengue prevention and control 2012-
552 2020. World Health Organization; 2012.
- 553 6. DALYs GBD, Collaborators H, Murray CJ, Barber RM, Foreman KJ, Abbasoglu
554 Ozgoren A, et al. Global, regional, and national disability-adjusted life years (DALYs) for 306
555 diseases and injuries and healthy life expectancy (HALE) for 188 countries, 1990-2013:
556 quantifying the epidemiological transition. *Lancet*. 2015;386(10009):2145-91. Epub 2015/09/01.
557 doi: 10.1016/S0140-6736(15)61340-X. PubMed PMID: 26321261; PubMed Central PMCID:
558 PMCPMC4673910.
- 559 7. Yactayo S, Staples JE, Millot V, Cibrelus L, Ramon-Pardo P. Epidemiology of
560 Chikungunya in the Americas. *The Journal of Infectious Diseases*. 2016;214(suppl_5):S441-S5.
561 doi: 10.1093/infdis/jiw390.
- 562 8. Zhang Q, Sun K, Chinazzi M, Pastore y Piontti A, Dean NE, Rojas DP, et al. Spread of
563 Zika virus in the Americas. *Proceedings of the National Academy of Sciences*.
564 2017;114(22):E4334-E43. doi: doi:10.1073/pnas.1620161114.
- 565 9. Rodriguez-Barraquer I, Salje H, Cummings DA. Opportunities for improved surveillance
566 and control of dengue from age-specific case data. *Elife*. 2019;8. Epub 2019/05/24. doi:
567 10.7554/eLife.45474. PubMed PMID: 31120419; PubMed Central PMCID: PMCPMC6579519.
- 568 10. Schenzle D, Dietz K, Frosner GG. Antibody against hepatitis A in seven European
569 countries. II. Statistical analysis of cross-sectional surveys. *Am J Epidemiol*. 1979;110(1):70-6.
570 Epub 1979/07/01. doi: 10.1093/oxfordjournals.aje.a112790. PubMed PMID: 313700.
- 571 11. Cattarino L, Rodriguez-Barraquer I, Imai N, Cummings DAT, Ferguson NM. Mapping
572 global variation in dengue transmission intensity. *Sci Transl Med*. 2020;12(528). Epub
573 2020/01/31. doi: 10.1126/scitranslmed.aax4144. PubMed PMID: 31996463.
- 574 12. Cevallos V, Ponce P, Waggoner JJ, Pinsky BA, Coloma J, Quiroga C, et al. Zika and
575 Chikungunya virus detection in naturally infected *Aedes aegypti* in Ecuador. *Acta Tropica*.
576 2018;177:74-80. doi: <https://doi.org/10.1016/j.actatropica.2017.09.029>.
- 577 13. Stewart-Ibarra AM, Lowe R. Climate and non-climate drivers of dengue epidemics in
578 southern coastal Ecuador. *Am J Trop Med Hyg*. 2013;88(5):971-81. Epub 2013/03/13. doi:

- 579 10.4269/ajtmh.12-0478. PubMed PMID: 23478584; PubMed Central PMCID:
580 PMCPMC3752767.
- 581 14. CONNOR ME. YELLOW FEVER CONTROL IN ECUADOR: PRELIMINARY
582 REPORT. *Journal of the American Medical Association*. 1920;74(10):650-1. doi:
583 10.1001/jama.1920.02620100010004.
- 584 15. Izurieta RO, Macaluso M, Watts DM, Tesh RB, Guerra B, Cruz LM, et al. Assessing
585 yellow Fever risk in the ecuadorian Amazon. *J Glob Infect Dis*. 2009;1(1):7-13. doi:
586 10.4103/0974-777x.49188. PubMed PMID: 20300380; PubMed Central PMCID:
587 PMCPMC2840941.
- 588 16. Real-Cotto JJ, Regato Arrata ME, Burgos Yépez VE, Jurado Cobeña ET. Evolución del
589 virus dengue en el Ecuador: Período 2000 a 2015. *Anales de la Facultad de Medicina*.
590 2017;78:29-35.
- 591 17. Márquez S, Carrera J, Espín E, Cifuentes SG, Trueba G, Coloma J, et al. Dengue
592 Serotype Differences in Urban and Semi-Rural Communities in Ecuador. *Avances en Ciencias e*
593 *Ingeniería*. 2018;10. doi: 10.18272/aci.v10i1.959.
- 594 18. Maljkovic Berry I, Rutvisuttinunt W, Sippy R, Beltran-Ayala E, Figueroa K, Ryan S, et
595 al. The origins of dengue and chikungunya viruses in Ecuador following increased migration
596 from Venezuela and Colombia. *BMC Evolutionary Biology*. 2020;20(1):31. doi:
597 10.1186/s12862-020-1596-8.
- 598 19. Márquez S, Lee G, Gutiérrez B, Bennett S, Coloma J, Eisenberg JNS, et al. Phylogenetic
599 Analysis of Transmission Dynamics of Dengue in Large and Small Population Centers, Northern
600 Ecuador. *Emerging Infectious Disease journal*. 2023;29(5):888. doi: 10.3201/eid2905.221226.
- 601 20. Olkowski S, Forshey BM, Morrison AC, Rocha C, Vilcarromero S, Halsey ES, et al.
602 Reduced risk of disease during postsecondary dengue virus infections. *J Infect Dis*.
603 2013;208(6):1026-33. Epub 2013/06/19. doi: 10.1093/infdis/jit273. PubMed PMID: 23776195;
604 PubMed Central PMCID: PMCPMC3749012.
- 605 21. Cummings DA, Iamsirithaworn S, Lessler JT, McDermott A, Prasanthong R, Nisalak A,
606 et al. The impact of the demographic transition on dengue in Thailand: insights from a statistical
607 analysis and mathematical modeling. *PLoS Med*. 2009;6(9):e1000139. Epub 2009/09/02. doi:
608 10.1371/journal.pmed.1000139. PubMed PMID: 19721696; PubMed Central PMCID:
609 PMCPMC2726436.
- 610 22. Ferguson NM, Donnelly CA, Anderson RM. Transmission dynamics and epidemiology
611 of dengue: insights from age-stratified sero-prevalence surveys. *Philos Trans R Soc Lond B Biol*
612 *Sci*. 1999;354(1384):757-68. Epub 1999/06/12. doi: 10.1098/rstb.1999.0428. PubMed PMID:
613 10365401; PubMed Central PMCID: PMCPMC1692557.
- 614 23. Stan Development Team. RStan: the R interface to Stan. 2020.
- 615 24. R Core Team. R: A language and environment for statistical computing. R Foundation
616 for Statistical Computing. Vienna, Austria: 2022.
- 617 25. Phillips SJ, Anderson RP, Schapire RE. Maximum entropy modeling of species
618 geographic distributions. *Ecol Model*. 2006;190(3-4):231-59. doi:
619 10.1016/j.ecolmodel.2005.03.026. PubMed PMID: WOS:000233859600001.
- 620 26. Phillips SJ, Dudik M. Modeling of species distributions with Maxent: new extensions and
621 a comprehensive evaluation. *Ecography*. 2008;31(2):161-75. doi: 10.1111/j.0906-
622 7590.2008.5203.x. PubMed PMID: WOS:000254499200001.

- 623 27. Carrazco-Montalvo A, Ponce P, Villota SD, Quentin E, Muñoz-Tobar S, Coloma J, et al.
624 Establishment, Genetic Diversity, and Habitat Suitability of *Aedes albopictus* Populations from
625 Ecuador. *Insects*. 2022;13(3):305. PubMed PMID: doi:10.3390/insects13030305.
- 626 28. Messina JP, Brady OJ, Scott TW, Zou C, Pigott DM, Duda KA, et al. Global spread of
627 dengue virus types: mapping the 70 year history. *Trends Microbiol*. 2014;22(3):138-46. Epub
628 2014/01/29. doi: 10.1016/j.tim.2013.12.011. PubMed PMID: 24468533; PubMed Central
629 PMCID: PMCPMC3946041.
- 630 29. Eisenberg JNS, Cevallos W, Ponce K, Levy K, Bates SJ, Scott JC, et al. Environmental
631 change and infectious disease: How new roads affect the transmission of diarrheal pathogens in
632 rural Ecuador. *Proceedings of the National Academy of Sciences*. 2006;103(51):19460-5. doi:
633 doi:10.1073/pnas.0609431104.
- 634 30. Zelner JL, Trostle J, Goldstick JE, Cevallos W, House JS, Eisenberg JN. Social
635 connectedness and disease transmission: social organization, cohesion, village context, and
636 infection risk in rural Ecuador. *Am J Public Health*. 2012;102(12):2233-9. Epub 20121018. doi:
637 10.2105/ajph.2012.300795. PubMed PMID: 23078481; PubMed Central PMCID:
638 PMCPMC3519324.
- 639 31. Lana RM, Gomes MFdC, Lima TFMd, Honório NA, Codeço CT. The introduction of
640 dengue follows transportation infrastructure changes in the state of Acre, Brazil: A network-
641 based analysis. *PLOS Neglected Tropical Diseases*. 2017;11(11):e0006070. doi:
642 10.1371/journal.pntd.0006070.
- 643 32. de Castro DB, Sampaio VS, de Albuquerque BC, Pinto RC, Sadahiro M, Dos Passos RA,
644 et al. Dengue epidemic typology and risk factors for extensive epidemic in Amazonas state,
645 Brazil, 2010-2011. *BMC Public Health*. 2018;18(1):356. Epub 20180315. doi: 10.1186/s12889-
646 018-5251-x. PubMed PMID: 29544456; PubMed Central PMCID: PMCPMC5855995.
- 647 33. Guagliardo SA, Morrison AC, Barboza JL, Requena E, Astete H, Vazquez-Prokopec G,
648 et al. River Boats Contribute to the Regional Spread of the Dengue Vector *Aedes aegypti* in the
649 Peruvian Amazon. *PLOS Neglected Tropical Diseases*. 2015;9(4):e0003648. doi:
650 10.1371/journal.pntd.0003648.
- 651 34. Rights Violations in the Ecuadorian Amazon: The Human Consequences of Oil
652 Development. *Health Hum Rights*. 1994;1(1):82-100. PubMed PMID: 10395712.
- 653