

1 **Association between lifestyle factors and weight in Japan university**
2 **students during COVID-19 mild lockdown: a quantitative study**

3

4 **Short title:** Association between lifestyle and weight in Japan university students during
5 COVID-19 mild lockdown

6

7 Haruka Arimori¹, Norio Abiru¹, Shimpei Morimoto², Tomoya Nishino^{3,4}, Atsushi

8 Kawakami¹, Akie Kamada^{1,*}, Masakazu Kobayashi^{1,4}

9

10 ¹Department of Endocrinology and Metabolism, Nagasaki University Hospital, Nagasaki,

11 Japan

12 ²Innovation Platform & Office for Precision Medicine, Nagasaki University Graduate School

13 of Biomedical Sciences, Nagasaki, Japan

14 ³Department of Nephrology, Nagasaki University Hospital, Nagasaki, Japan

15 ⁴ Health Center, Nagasaki University, Japan

16

17 * Corresponding author

18 E-mail: a-kamada@nagasaki-u.ac.jp (AK)

19

20 **Abstract**

21 We investigated the lifestyle factors influencing weight gain in university students during
22 restrictions (mild lockdown) imposed owing to the novel coronavirus disease pandemic in
23 Japan. In this cross-sectional study, a questionnaire survey of Nagasaki University students
24 undergoing health examinations was conducted in 2021. Students reporting ≥ 3 kg weight
25 gain were included in the weight gain group; the remaining students were in the non-weight
26 gain group. Fisher's exact test and binary logistic regression were performed to detect the
27 associations between weight gain and each lifestyle factor. We included 3,059 respondents
28 (response rate: 45.7%), and 9.5% respondents reported ≥ 3 kg weight gain. The following
29 factors were associated with weight gain (odds ratio, 95% confidence interval, p value from
30 Fisher's exact test): dining out for ≥ 4 times/week (2.16 [1.40, 3.32], $p = 8.7 \times 10^{-4}$), gaming
31 time of ≥ 4 h/day (2.26 [1.45, 3.47], $p = 2.4 \times 10^{-4}$). Binary logistic regression among the four
32 highest odds ratios showed that after adjusting for other factors frequently dining out and
33 prolonged gaming time were significantly associated with weight gain. Prolonged gaming
34 and frequently dining out were associated with weight gain in students during the mild
35 lockdown.

36

37 **Keywords:** weight, lifestyle; university students; Japan; COVID-19

38

39 **Introduction**

40 The rapid increase in obesity is a global health issue. In the United States of America, the
41 highest increase in the prevalence of obesity from 1991 to 1998 was noted among individuals
42 aged 18–29 years (from 7.1% to 12.1%) [1]. According to a report by the Ministry of Health,
43 Labour and Welfare of Japan, the prevalence of obesity was 23.1% among men in their 20 s,
44 29.4% among men in their 30 s, and 39.7% among men in their 40 s [2]. Kobayashi et al.
45 reported that metabolic syndrome was observed in 3.3% of men and no women in their cohort
46 study of university students [3]. These findings indicate the necessity of countermeasures
47 against obesity in youth.

48 Following the novel coronavirus disease 2019 (COVID-19) outbreak caused by the
49 severe acute respiratory syndrome coronavirus 2 in December 2019, the World Health
50 Organization declared COVID-19 a pandemic on March 11, 2020. In several countries,
51 curfews (lockdowns) were lawfully implemented and penalties applied. On April 7, 2020, the
52 Japanese government declared a state of emergency, and to prevent the spread of infection,
53 they requested individuals to refrain from nonessential and nonurgent outings, to avoid social
54 contact to the maximum extent, and to stay at home to ensure social distancing. This non-
55 enforceable and non-punitive request to stay indoors is hereafter referred to as “mild
56 lockdown” in the present study. Although this restriction of activity was considered effective
57 for controlling the spread of COVID-19 infection, it was accompanied with numerous
58 adverse effects, such as lack of exercise, weight gain, behavioral addiction, lack of sun
59 exposure, and social isolation; in particular, staying at home for several months led to
60 changes in social habits, and there was a risk of changes in personal health [4,5].

61 In the youth, there were major lifestyle changes; particularly, in university students,
62 learning at home and attending online lectures as well as the voluntary restriction of social

63 club activities and restriction of part-time work caused several lifestyle changes in physical
64 activity, diet, and sleep habits, which were associated with weight gain.

65 The mild lockdown will continue until 2022, and it is speculated that prolonged lifestyle
66 changes will exacerbate weight gain and health issues among university students. Although
67 young adulthood, such as the university years, is considered a crucial time for the
68 development of metabolic abnormalities and increased obesity [6], the impact of lifestyle
69 changes during the mild lockdown on student health has not adequately been examined.

70 In the present study, in order to identify the factors that contribute to weight gain in
71 youth during mild lockdown, we investigated the relationship between weight gain and
72 lifestyle changes during the mild lockdown in students at Nagasaki University and explored
73 the lifestyle factors and their cutoffs associated with weight gain among youth in the face of a
74 major lifestyle change of 1–2 years of mild lockdown.

75 **Materials and Methods**

76 **Participants**

77 The participants were students of Nagasaki University receiving student medical
78 examinations in 2020 and 2021. Individuals who understood Japanese, irrespective of their
79 nationality, and who consented to the present study were included as participants. The authors
80 accessed personally identifiable information of the subjects during or after data collection.

81 In 2020, there were a total of 9,179 students at Nagasaki University; of them, 6,065
82 received a health examination, and 3,722 students completed a questionnaire (response rate,
83 61.2%). We excluded 1 student with an incomplete questionnaire; therefore, a total of 3,721
84 students (1,850 men) were included in the analyses.

85 In 2021, there were a total of 9,031 students at Nagasaki University; of these, 6,675
86 received a health examination, and 3,059 students (1,705 men) who were not first-year

87 students, who consented to the study, and who completed the questionnaire response rate,
88 45.7%) were included in the analyses (S1 Fig).

89 **Study design**

90 The present study was conducted with the approval of the ethical review board of
91 Nagasaki University (approval number: 20062604) and in accordance with the principles of
92 the Declaration of Helsinki.

93 This study is a cross-sectional single-center survey. The study period was from July 27 to
94 November 27, 2020, and from April 20 to June 11, 2021. Researchers and research assistants
95 visited Nagasaki University and requested voluntary participation from students to receive
96 medical examinations in 2020 and 2021. Before implementing the study, written consent was
97 obtained from eligible individuals. After obtaining consent in Japanese, participants were
98 requested to complete an electronic questionnaire.

99 The online survey was distributed as an electronic questionnaire via Google Forms®
100 (QR code provided), which is a social media service. Researchers and research assistants
101 adopted infection prevention measures, such as handwashing and physical distancing, and
102 used surgical masks, face shields, medical gloves, and sanitizing wipes. The questionnaire
103 survey was conducted during waiting periods before and after the medical examinations. The
104 time required to complete the questionnaire was approximately 5 minutes. The data was
105 confidentially analyzed by the researchers.

106 To assess the lifestyle of university students, we newly developed our own questionnaire
107 based on the Pittsburgh Sleep Quality Index [7] and the National Health and Nutrition Survey
108 [2] of the Ministry of Health and Welfare. From the Pittsburgh Sleep Quality Index, we used
109 bedtime, waking up time, and sleep duration (all listed), and from the National Health
110 Survey, we used frequency of breakfast and frequency of dining out (all listed). The
111 questionnaire included 17 items under 6 sections.

112 (1) Personal information obtained via two questions (age and sex)

113 (2) Subjective evaluation on the changes in their weight and the general aspects of their
114 lifestyles obtained via two questions (weight change: “gain of ≥ 3 kg,” “gain of < 3 kg,”
115 “unchanged,” “loss of < 3 kg,” and “loss of ≥ 3 kg”; and general lifestyle change: “changed
116 greatly,” “changed a little,” and “unchanged”)

117 (3) Information regarding physical activity obtained via three questions (time spent at
118 home: h/day, frequency of part-time work: times/week, and frequency of social club
119 activities: times/week)

120 (4) Information regarding diet obtained via two questions (frequency of breakfast:
121 times/week, frequency of dining out: times/week)

122 (5) Information regarding daily rhythm obtained via three questions (bedtime, waking up
123 time, and sleep duration: h/day)

124 (6) Information regarding lifestyle obtained via five questions (smoking habit, drinking
125 habit: times/month, alcohol amount: units/time, gaming time: h/day, and internet surfing
126 time: h/day)

127 We examined students who responded that they observed a weight gain of ≥ 3 kg (WG
128 group) and the remaining students for all other categories (non-WG group). For each category
129 in each lifestyle factor in sections (3)–(6), categorical variables were stratified into categories
130 of 3–4 groups for before and during the mild lockdown. Further, the change was
131 dichotomized to evaluate whether the change within a participant between before and after
132 the lockdown crossed a threshold between adjacent categories.

133 In section (2), questions about changes in weight and lifestyle were asked before and
134 during mild lockdown in both 2020 and 2021, respectively: in 2020, before: March–June
135 2019, after: from March 2020 to during survey (July–November 2020); in 2021, before:

136 October–December 2019, and later: October–December 2020. For each lifestyle factor in
137 sections (3)–(6), we questioned the daily lifestyle before and during the mild lockdown.

138 In respondents of the 2021 questionnaire in which data regarding actual body weight
139 measurements were obtained from 2019 and 2021, the amount of change in body weight
140 measurements (ΔBW , kg) was stratified into five groups; we examined the reliability of
141 ΔBW against the questionnaire responses (1: “loss of ≥ 3 kg” to 5: “gain of ≥ 3 kg”). ΔBW
142 was stratified according to two versions of the criteria as follows: (1) 1: $\Delta BW < -3$, 2: $-3 \leq$
143 $\Delta BW < -1$, 3: $-1 \leq \Delta BW < +1$, 4: $+1 \leq \Delta BW < +3$, and 5: $+3 \leq \Delta BW$; and (2) 1: $\Delta BW <$
144 -4.5 , 2: $-4.5 \leq \Delta BW < 1.5$, 3: $-1.5 \leq \Delta BW < +1.5$, 4: $+1.5 \leq \Delta BW < +4.5$, and 5: $+4.5 \leq$
145 ΔBW . Furthermore, the sensitivity and specificity of the five groups were calculated for the
146 questionnaire responses and ΔBW , and the median ΔBW (25–75 percentile) of each
147 questionnaire response was determined.

148 **Statistical analysis**

149 Continuous variables other than age were expressed as mean values and standard
150 deviations. The ages were aggregated as mean values and the 25 and 75 percentiles. The
151 reliability of the data regarding the weight gain in the responses to the 2021 questionnaire as
152 a proxy for the result from the actual body weight measurements that were obtained in 2019
153 and 2021 was evaluated as the agreement using Cronbach’s α coefficient after discretization
154 of the measurement result of the body weight.

155 In categorical data analyses, the reference group was assigned to a category considered
156 the healthiest or containing the most individuals. The association with weight gain was
157 evaluated by the odds ratio (OR) and 95% confidence interval (CI). The associations were
158 prioritized to be reported using the p values obtained via Fisher’s exact tests. We conducted a
159 binomial logistic regression analysis in which the logistic of the weight gain (responses were
160 dichotomized as explained in the *Study design* section) was regressed onto independent

161 variables with the four highest OR in Fisher’s exact test. We calculated the p value, OR, and
162 95% CI.

163 The association of changes in each of the items in sections (3)–(6) with the weight gain
164 was evaluated as the ratio of the McNamar’s chi-square statistics, in which the numerator was
165 the chi-square statistic on the weight gain group and the denominator was the statistic on all
166 participants. Each chi-square statistic was obtained from the contingency table of the
167 dichotomized changes in the factor. The null distribution of the ratio for each factor was
168 obtained as the empirical cumulative distribution function (ECDF) with permutations of the
169 labels (Yes/No) of “weight gain.” For each of the factors, a cutoff value was determined
170 among the thresholds between the adjacent categories as the ECDF returned the extreme
171 value for the observed data.

172 The distance between the lifestyle factors was defined as the Cramer’s V statistic
173 calculated from the observed data, and clustering analysis among the factors was conducted
174 using the Ward’s hierarchical agglomerative algorithm on the distance.

175 Statistical analyses were conducted using R version 4.0.3, developed by the R
176 Development Core Team [8].

177 **Results**

178 **Participant characteristics**

179 Responses were obtained from 3,721 participants (21.3 years old on average) in 2020
180 and 3,059 participants (21.8 years old on average) in 2021. The WG group that included
181 participants who responded to a weight gain of ≥ 3 kg during the mild lockdown compared
182 with before the mild lockdown consisted of 224 (6.0%) and 290 (9.5%) students in 2020 and
183 2021, respectively; compared with 2020, the frequency of students responding to a weight
184 gain of ≥ 3 kg was significantly higher in 2021 ($p < 0.01$). In both years, there was a higher

185 number of male students in the WG group than in the non-WG group, and body height, body
186 weight, and body mass index were higher in the WG group ($p < 0.05$). In both years,
187 compared with the non-WG group, a higher proportion of students in the WG group
188 responded that they experienced a major change in their overall lifestyle ($p < 0.01$, Table 1).

189 Regarding the 1,783 students who participated in the 2021 questionnaire and for whom
190 actual body weight measurements were obtained during the 2019 and 2021 medical
191 examinations, we evaluated the amount of change between the questionnaire response and
192 actual body weight measurement (S2 Fig). Regarding the sensitivity and specificity of ΔBW
193 stratified into five groups and questionnaire responses, for weight gain of ≥ 3 kg and ΔBW of
194 ≥ 4.5 kg, sensitivity was 0.47 and specificity was 0.95, whereas for ΔBW of ≥ 3 kg, the values
195 were 0.37 and 0.97, respectively. The median ΔBW was +4.6 (+2.9 to +6.9) kg in the WG
196 group and -0.5 (-2.4 to +1.6) kg in the non-WG group. (The confusion matrix and Cronbach
197 α are shown in S1 Table).

198 **Table 1.** Participant characteristics. (a) Participants from the fiscal year 2020; (b) Participants from the fiscal year 2021.

(a) Fiscal Year 2020															
	All		Weight gain group		Non-weight gain		p value†	Breakdown of non-weight gain group							
			(Weight gain of ≥3 kg)		group			Weight gain of <3 kg		No change		Weight loss of <3 kg		Weight loss of ≥3 kg	
N (male, %)	3721	(1850, 49.7)	224	(138, 61.6)	3497	(1712, 49.0)	<0.01**	656	(322, 49.1)	1960	(1069, 54.5)	556	(200, 36.0)	325	(121, 37.2)
Age (25–75 percentile)	21.3	(19–22)	22.2	(20–23)	21.2	(19–22)	<0.01**	21.5	(20–22)	21.2	(20–22)	21	(19–22)	20.8	(19–22)
Height (SD), cm ‡	164.3	(±8.6)	166.1	(±8.4)	164.2	(±8.5)	0.01 *	163.7	(±8.7)	165.1	(±8.6)	162.6	(±8.3)	163.2	(±8.1)
Body weight (SD), kg ‡	57.1	(±10.6)	65.8	(±12.9)	56.6	(±10.2)	<0.01**	59.6	(±11.0)	56.4	(±10.0)	54	(±9.0)	56.4	(±10.3)
Body mass index (SD), kg/cm ² ‡	21	(±3.0)	23.8	(±3.9)	20.9	(±2.8)	<0.01**	22.1	(±8.4)	22.1	(±2.9)	20.3	(±2.5)	21.1	(±2.7)
Dramatic changes in lifestyles n (%)	1051	28.2	101	45.1	950	27.2	<0.01**	198	30.2	455	23.2	171	30.8	126	38.8
Anxious became serious n (%)	739	19.9	60	26.8	679	19.4	<0.01**	150	22.9	306	15.6	149	26.8	74	22.8

(b) Fiscal Year 2021															
	All		Weight gain group		Non-weight gain		p value†	Breakdown of non-weight gain group							
			(Weight gain of ≥3 kg)		group			Weight gain of <3 kg		No change		Weight loss of <3 kg		Weight loss of ≥3 kg	
N (male, %)	3059	(1705, 55.7)	290	(178, 61.4)	2769	(1527, 55.1)	0.05 *	524	(273, 52.1)	1517	(886, 58.4)	469	(240, 51.2)	259	(128, 49.0)
Age (25–75 percentile)	21.8	(20–23)	22.1	(20–23)	21.7	(20–22)	0.04 *	22.1	(20–23)	21.6	(20–22)	21.7	(20–22)	21.6	(20–22)
Height (SD), cm ‡	165.6	(±8.5)	166.5	(±8.1)	165.5	(±8.6)	0.04 *	164.8	(±8.6)	165.9	(±8.6)	164.9	(±8.4)	165.3	(±8.6)
Body Weight (SD), kg ‡	58.3	(±11.0)	67.1	(±12.2)	57.4	(±10.4)	<0.01**	60.9	(±10.8)	57.1	(±10.2)	54.7	(±9.7)	56.8	(±10.5)
Body mass index (SD), kg/cm ² ‡	21.2	(±3.0)	24.1	(±3.5)	20.9	(±2.8)	<0.01**	22.3	(±2.8)	20.6	(±2.7)	20	(±2.5)	20.7	(±2.7)

Dramatic changes in lifestyle n (%)	928	30.3	133	45.9	795	28.7	<0.01**	167	31.9	371	24.5	161	34.3	96	37.1
Anxious became serious n (%)	550	18	81	27.9	469	16.9	<0.01**	100	19.1	196	12.9	99	21.1	74	28.6

199

200 ¹Body mass index: BW (kg)/Height (cm²)

201 Weight gain group (the students who responded that there was a weight gain of ≥ 3 kg in the 2021 survey about weight change from before to
 202 during the mild lockdown); Non-weight gain group (the group that excluded those in the “Weight gain group” from the total, i.e., those who
 203 responded that there was a weight gain of < 3 kg, no weight change, weight loss of < 3 kg, or weight loss of ≥ 3 kg in the 2021 survey about
 204 weight change from before to during the mild lockdown).

205 † p value; the p value of Fisher’s exact or Welch’s t test in weight gain and non-weight gain groups. *p < 0.05, **p < 0.01.

206 ‡ Anthropometric factors (height, BW, and BMI) were obtained from the student physical examination data of fiscal year 2021. The number of
 207 respondents to the questionnaire survey in 2020 who provided data on anthropometric factors is 2337 (weight gain group, 129; non-weight gain
 208 group, 2208). The number of respondents to the questionnaire survey in 2021 who provided data on anthropometric factors is 3035 (weight gain
 209 group, 287; non-weight gain group, 2746).

210 **Clustering analysis of the relationship among changing lifestyle** 211 **factors during the mild lockdown**

212 To identify the groups of lifestyle factors in which the changes during mild lockdown for
213 all participants (irrespective of body weight change) in 2021 were mutually dependent, we
214 conducted clustering analyses. Because we used Cramer's V statistic as a measure of the
215 distance between the factors, non-linear and non-rank-ordering associations were included in
216 our findings. As a result, we observed two major groups (groups A and B) of lifestyle factors
217 as well as two and three subgroups of factors under groups A (groups A-a–A-b) and group B
218 (groups B-a–B-c), respectively. The group A included “changes in the time spent at home”
219 (red) and “changes in game time,” “sleeping rhythm,” and “breakfast” (orange). The group B
220 included “changes in smoking” (green), “changes in alcohol consumption” (blue), and other
221 changes (part-time job, club activities, eating out, drinking, and smoking) (purple) (Fig 1).

222

223 **Fig 1. Heatmap showing the clustering of lifestyle changes before and during the mild**
224 **lockdown.** The vertical axis represents students, and the horizontal axis represents each
225 cutoff for lifestyle changes. Purple indicates a change from above to below the cutoff. Light
226 green indicates no change (i.e., above to above or below to below the cutoff). Orange
227 indicates a change from below to above the cutoff. *: Lifestyle factors found to be associated
228 with weight gain using Fisher's exact test across all students; **: Lifestyle factors found to be
229 associated with weight gain using Fisher's exact test across male students; ***: Lifestyle
230 factors found to be associated with weight gain using Fisher's exact test across female
231 students; †: sex, ‡: absence of dramatic lifestyles changes. Regarding sex, orange represents
232 males and red represents females. For overall life change, orange indicates dramatic change
233 and red indicates no dramatic change.

234

235 **Relationship between a weight gain of ≥ 3 kg and each lifestyle**
236 **factor during the mild lockdown using Fisher's exact test**

237 The following factors were found to be associated with a ≥ 3 kg weight gain: OR (95%
238 CI), p value from Fisher's exact test of the 2021 questionnaire data: breakfast frequency of ≤ 1
239 time/week (1.39 [1.01, 1.91], $p = 4.7 \times 10^{-2}$), dining out ≥ 4 times/week (2.16 [1.40, 3.32], $p =$
240 8.7×10^{-4}), bedtime at or after 2 am (1.57 [1.13, 2.20], $p = 7.4 \times 10^{-3}$), waking up at or after
241 10 am (1.43 [1.00, 2.04], $p = 4.9 \times 10^{-2}$), sleep duration of ≥ 9 h (1.74 [1.01, 2.98], $p = 4.8 \times$
242 10^{-2}), and gaming time of ≥ 4 h/day (2.26 [1.45, 3.47], $p = 2.4 \times 10^{-4}$) (Fig 2).

243

244 **Fig 2. Relationship between weight gain of ≥ 3 kg and each lifestyle factor during the**
245 **mild lockdown in all students.** *p value < 0.05 ; **p value < 0.01 ; †Non: Nondrinker or
246 nonsmoker; ‡Ex: ex-drinker or ex-smoker; §Occasion: occasional smoker; ||Daily: daily
247 smoker. OR: Odds ratio; WG: Weight gain group (the student group who responded that
248 there was a weight gain of ≥ 3 kg in the 2021 survey about weight change from before to
249 during the mild lockdown); Non-WG: Non-weight gain group (the student group that
250 excluded those in the "Weight gain group" from the total, i.e., those who responded that there
251 was a weight gain of < 3 kg, no weight change, weight loss of < 3 kg, or weight loss of ≥ 3 kg
252 in the 2021 survey about weight change from before to during the mild lockdown). Error bars
253 indicate 95% confidence intervals.

254

255 Furthermore, in the analysis according to sex, the following factors were found to be
256 associated with a ≥ 3 kg weight gain in males: dining out ≥ 4 times/week (2.00 [1.22, 3.27], p
257 $= 7.4 \times 10^{-3}$), part-time work frequency of 0 times/week (1.52 [1.02, 2.30], $p = 4.8 \times 10^{-2}$),
258 bedtime at or after 2 am (1.64 [1.06, 2.53], $p = 2.5 \times 10^{-2}$), waking up between 8 and 10 am
259 (1.47 [1.02, 2.13], $p = 3.9 \times 10^{-2}$), waking up at or after 10 am (1.73 [1.09, 2.76], $p = 2.5 \times$

260 10^{-2}), sleep duration of ≥ 9 h (2.23 [1.10, 4.37], $p = 2.8 \times 10^{-2}$), gaming time of ≥ 4 h/day
261 (2.30, [1.34, 3.93], $p = 1.8 \times 10^{-3}$), and internet surfing time of ≥ 4 h/day (3.00, [1.03, 9.40], p
262 $= 3.4 \times 10^{-2}$) (Fig 3A). In females, the factor associated with a ≥ 3 kg weight gain was time
263 spent at home of ≥ 12 h/day (1.95 [1.13, 3.39], $p = 1.3 \times 10^{-2}$) only (Fig 3B).

264 Overall, in 2021, we found that weight gain in students was associated with skipping
265 breakfast, frequently dining out, night owl sleeping rhythm, and gaming time. In males,
266 weight gain was associated with frequently dining out, part-time job frequency, night owl
267 sleeping rhythm, gaming time, and internet surfing time, whereas in females, it was
268 associated with time spent at home.

269

270 **Fig 3. Relationship between weight gain of ≥ 3 kg and each lifestyle factor during the**
271 **mild lockdown according to sex.** (a) Relationship between weight gain of ≥ 3 kg and each
272 lifestyle factor during the mild lockdown in male students; (b) the relationship between
273 weight gain of ≥ 3 kg and each lifestyle factor during the mild lockdown in female students * p
274 value < 0.05 ; ** p value < 0.01 ; †Non: Nondrinker or nonsmoker; ‡Ex: ex-drinker or ex-
275 smoker; §Occasion: occasional smoker; ||Daily: daily smoker. OR: Odds ratio; WG: Weight
276 gain group (the student group who responded that there was a weight gain of ≥ 3 kg in the
277 2021 survey about weight change from before to during the mild lockdown); Non-WG: Non-
278 weight gain group (the student group that excluded those in the “Weight gain group” from the
279 total, i.e., those who responded that there was a weight gain of < 3 kg, no weight change,
280 weight loss of < 3 kg, or weight loss of ≥ 3 kg in the 2021 survey about weight change from
281 before to during the mild lockdown). Error bars indicate 95% confidence intervals.

282

283 **Multivariate analysis**

284 We conducted binary logistic regression of the four items with the highest OR in the
285 Fisher's exact test. The top items in Fisher's exact test included dining out ≥ 4 times/week,
286 sleep duration of ≥ 9 h, gaming time of ≥ 4 h, and internet surfing time of ≥ 4 h. Among these,
287 after adjusting for all other factors, a relationship between weight gain and dining out ≥ 4
288 times/week and gaming time of ≥ 4 h was observed (Table 2).

289 **Table 2.** Binary logistic regression analysis for the lifestyle factors associated with a weight gain of >3 kg during mild lockdown in all students.

Lifestyle factors	Category	Units	Estimate of log odds ratio	(95% CI)	p value	
# Frequently dining out & sleep duration						
Frequently dining out	<1	time/week	Reference			
Frequently dining out	1	time/week	0.06	(-0.27 to 0.38)	0.71	
Frequently dining out	2-3	times/week	0.28	(-0.10 to 0.63)	0.14	
Frequently dining out	≥4	times/week	0.75	(0.31 to 1.17)	6.1 × 10 ⁻⁴	***
Sleep duration	6-9	h/day	Reference			
Sleep duration	<6	h/day	0.23	(-0.04 to 0.50)	0.10	
Sleep duration	≥9	h/day	0.53	(-0.04 to 1.04)	0.05	
# Frequently dining out & Gaming time						
Frequently dining out	<1	time/week	Reference			
Frequently dining out	1	time/week	0.04	(-0.30 to 0.36)	0.82	

Frequently dining out	2–3	times/week	0.23	(–0.15 to 0.59)	0.22	
Frequently dining out	≥4	times/week	0.72	(0.28 to 1.14)	1.0×10 ^{–3}	**
Gaming time	0	h/day	Reference			
Gaming time	<2	h/day	0.2	(–0.11 to 0.50)	0.20	
Gaming time	2–4	h/day	0.2	(–0.13 to 0.54)	0.23	
Gaming time	≥4	h/day	0.77	(0.34 to 1.18)	3.5×10 ^{–4}	***

Frequently dining out & Internet surfing time

Frequently dining out	<1	time/week	Reference			
Frequently dining out	1	time/week	0.05	(–0.29 to 0.37)	0.77	
Frequently dining out	2–3	times/week	0.26	(–0.12 to 0.62)	0.17	
Frequently dining out	≥4	times/week	0.74	(0.29 to 1.16)	7.5×10 ^{–4}	***
Internet surfing time	0	h/day	Reference			
Internet surfing time	<2	h/day	0.09	(–0.76 to 1.17)	0.85	
Internet surfing time	2–4	h/day	0.21	(–0.62 to 1.27)	0.66	
Internet surfing time	≥4	h/day	0.68	(–0.16 to 1.75)	0.15	

Sleep duration & Gaming time

Sleep duration	6–9	h/day	Reference			
Sleep duration	<6	h/day	0.21	(–0.06 to 0.48)	0.12	
Sleep duration	≥9	h/day	0.45	(–0.13 to 0.96)	0.11	
Gaming time	0	h/day	Reference			
Gaming time	<2	h/day	0.21	(–0.09 to 0.52)	0.18	
Gaming time	2–4	h/day	0.23	(–0.11 to 0.56)	0.19	
Gaming time	>4	h/day	0.76	(0.33 to 1.18)	3.9×10 ^{–4}	***

Sleep duration & Internet surfing time

Sleep duration	6–9	h/day	Reference			
Sleep duration	<6	h/day	0.24	(–0.04 to 0.51)	0.09	
Sleep duration	≥9	h/day	0.43	(–0.14 to 0.94)	0.12	
Internet surfing time	0	h/day	Reference			
Internet surfing time	<2	h/day	0.12	(–0.74 to 1.19)	0.81	

Internet surfing time	2–4	h/day	0.24	(–0.59 to 1.30)	0.62	_____
Internet surfing time	≥4	h/day	0.7	(–0.14 to 1.77)	0.14	

Gaming time & Internet surfing time

Gaming time	0	h/day	Reference			
Gaming time	<2	h/day	0.28	(–0.03 to 0.60)	0.08	
Gaming time	2–4	h/day	0.29	(–0.06 to 0.63)	0.10	
Gaming time	≥4	h/day	0.67	(0.23 to 1.09)	2.3×10 ⁻³	**
Internet surfing time	0	h/day	Reference			
Internet surfing time	<2	h/day	–0.08	(–0.96 to 1.01)	0.87	
Internet surfing time	2–4	h/day	0.04	(–0.80 to 1.12)	0.93	
Internet surfing time	≥4	h/day	0.49	(–0.37 to 1.57)	0.31	

290 *p value < 0.05; **p value < 0.01; ***p value < 0.01.

291 In terms of sex differences, the top four items were identified from Fisher's exact test for
292 male students; after adjusting for all other factors, a relationship between weight gain and
293 dining out ≥ 4 times/week and gaming time of ≥ 4 h was observed. However, the relationship
294 with gaming time disappeared when adjusted with internet surfing time.

295 Furthermore, a relationship with weight gain remained only when frequently dining out
296 was adjusted with sleep duration of ≥ 9 h and when internet surfing time of ≥ 4 h was adjusted
297 with bedtime after 2 am (S2 Table).

298 The top four items of the Fisher test for females included dining out ≥ 4 times/week,
299 occasional smoking, ≥ 12 h spent at home, social club activities ≥ 4 times/week; even after
300 adjusting ≥ 12 h spent at home with each of the other factors, a relationship with weight gain
301 was observed ($p < 0.05$, $\log OR \geq 0.62$, S3 Table).

302 Furthermore, items with a high $\log OR (>0.6)$ when p value was ≥ 0.05 included internet
303 surfing time of ≥ 4 h (adjusted with frequently dining out and sleep duration). In males, this
304 included internet surfing time of ≥ 4 h (adjusted with frequently dining out and gaming time)
305 and sleep duration ≥ 9 h (adjusted with gaming time and internet surfing time); in females,
306 this included dining out ≥ 4 times/week and occasional smoking (combined with all other
307 factors) (Table 2, S2 and S3 Tables).

308 **Relationship between lifestyle changes and weight gain of ≥ 3 kg**

309 **before the mild lockdown and at the time of the survey using**

310 **ECDF**

311 We examined the association of changes in the lifestyle with the weight gain between
312 before the mild lockdown and at the time of the survey, which has not been analyzed in
313 studies to date. We extracted the ECDF value for changes in each cutoff value for each
314 lifestyle factor in 2021 and for weight gain of ≥ 3 kg from the ratio of the McNemar chi-

315 square statistics (the strength of lifestyle change before and during the mild lockdown) that
316 we obtained from the overall participants to the McNemar chi-square value (the strength of
317 lifestyle change before and during the mild lockdown) for the WG group. Lifestyle changes
318 with an ECDF closer to 1 were considered to have a high association with a weight change of
319 ≥ 3 kg (such lifestyle changes become clearer after classification according to the presence or
320 absence of weight gain of ≥ 3 kg and the extraction of only the WG group). Among each
321 lifestyle factor, we extracted the cutoff for the change with the greatest ECDF and the
322 associated ECDF, the ranking of which is presented in Table 3a. The higher the ECDF (close
323 to 1), the higher is the ranking, indicating lifestyle changes with a high relationship to weight
324 gain of ≥ 3 kg.

325 Items with a high ranking ECDF included bedtime at or after 2 am, prolonged internet
326 surfing time > 0 hour, prolonged time spent at home for ≥ 16 h, prolonged sleeping duration
327 of ≥ 9 h, and prolonged gaming time of ≥ 1 h/day (ECDF ≥ 0.96). In terms of sex, although the
328 cutoff value differed, the maximum ECDF for changes in lifestyle factors was high (ECDF \geq
329 0.92) (Table 3b, c).

330 **Table 3.** Ranking of ECDF values for the largest value for each lifestyle change factor in 2020 and 2021: (a) the ranking of ECDF values for the
 331 largest value for each lifestyle change factor in 2020 and 2021 in all students; (b) the ranking of ECDF values for the largest value for each
 332 lifestyle change factor in 2020 and 2021 in male students; (c) the ranking of ECDF values for the largest value for each lifestyle change factor in
 333 2020 and 2021 in female students.

(a) All				(b) Male				(c) Female				
Rank	Lifestyle factors change		Cutoff	ECDF	Rank		Cutoff	ECDF	Rank		Cutoff	ECDF
1	Bedtime	≥	26 o'clock	0.999	2	≥	26 o'clock	0.988	4	≥	26 o'clock	0.984
2	Internet surfing time	≥	0 h/day	0.998	4	≥	4 h/day	0.982	3	≥	0 h/day	0.987
3	Time spent at home	≥	16 h/day	0.992	6	≥	10 h/day	0.961	1	≥	20 h/day	1
4	Sleep duration	≥	9 h/day	0.971	5	≥	9 h/day	0.981	5	≥	8 h/day	0.955
5	Gaming time	≥	1 h/day	0.97	8	≥	4 h/day	0.924	2	≥	0 h/day	0.998
6	Smoking	=	Daily	0.95	7	=	Daily	0.948	6	=	Occasion or Daily	0.942
7	Part-time job frequency	≤	1 day/week	0.947	1	≤	1 day/week	0.992	13	≥	5 day/week	0.428
8	Waking up time	≥	12 o'clock	0.946	3	≥	12 o'clock	0.985	11	≥	10 o'clock	0.796
9	Social club activity frequency	≤	5 days/week	0.811	9	≤	5 days/week	0.816	10	≤	1 days/week	0.816
10	Frequently dining out	≥	14 times/week	0.751	10	≥	14 times/week	0.763	7	≥	7 times/week	0.875
11	Breakfast frequency	≥	2 times/week	0.691	13	<	5 times/week	0.502	8	<	5 times/week	0.873

12	Amount of alcohol consumed	<	3 units/time	0.656	11	<	3 units/time	0.743	12	≥	2 units/time	0.518
13	Drinking frequency	≥	20 times/month	0.604	12	<	12 times/month	0.728	9	≥	20 times/month	0.828

334 *ECDF; empirical cumulative distribution function. ECDF analysis was performed for each category of lifestyle changes before and during the
335 mild lockdown using the ratio of the McNemar chi-square value (the strength of lifestyle change) for the all participants to the McNemar chi-
336 square value for the weight gain group as the statistic. Lifestyle changes with an ECDF value of close to 1 were considered to be highly
337 associated with weight change.

338 **Discussion**

339 Imposing lockdown during the COVID-19 pandemic is an effective measure for
340 preventing the spread of infection; however, staying at home for a long period can threaten
341 personal health and lead to harmful effects, such as weight gain [4]; in Japan, where a mild
342 lockdown was implemented, there was concern regarding similar issues. Among the students
343 of Nagasaki University in the present survey, the number of students who exhibited weight
344 gain increased with the prolongation of the mild lockdown.

345 In the present study, a relationship was observed between gaming time and weight gain,
346 and the relationship with changes in gaming, internet surfing, and sleeping times were
347 suggested in overall students and in male students. The population exhibiting a prolonged
348 gaming time accounted for 7.5% of the overall population surveyed (male: 10.3%, female:
349 4.0%); this population was characteristically male-predominant. Gaming disorder and
350 internet addiction disorder are concepts that have long since been established; however, in
351 recent years, the increase in gaming, particularly among the youth, has drawn attention as an
352 health issue, and in 2019, gaming disorder was proposed as an important new disease concept
353 to be adopted into the ICD-11 of the World Health Organization [9,10]. The prevalence of
354 gaming disorder is reported to be approximately 10%–15% in the youth in Asia, and
355 approximately 1%–10% in the western countries [11] and there is concern that this increase
356 will continue in future. In Japan, it has been reported that with the spread of COVID-19
357 infection, the incidence of internet gaming disorder has increased, and that young individuals
358 in particular are at high risk of developing this disorder [12].

359 Reportedly, prolonged time spent on games and the internet causes weight gain owing to
360 factors, such as a higher number of meals consumed during screen time and the increased
361 exposure, preference, and desire to purchase high-calorie foods [13]. In addition, it is inferred
362 that a relative decline in physical activity level is involved. Meanwhile, it has been reported

363 that internet addiction disorder and gaming disorder are deeply associated with mental issues,
364 such as depression, anxiety [14], eating disorder [15], and sleep disturbance [16-21]. In
365 particular, it has been suggested that sleep disturbance disrupts the circadian rhythm and is
366 associated with obesity and hepatic and intestinal diseases caused by the dysregulation of the
367 physiological functions of hepatocytes, gastrointestinal cells, and adipocytes [22,23]. In
368 studies that evaluated the health status of adolescents and youth in the COVID-19 pandemic,
369 game usage and gaming disorder as well as smartphone addiction were reported to exert an
370 adverse effect on health leading to disorders, such as overweight and weight gain via sleep
371 deficit [24-26].

372 The present study suggested that time spent at home is strongly associated with weight
373 gain, particularly in females. The Ministry of Health, Labour and Welfare of Japan has
374 reported that among adults in their 20 s, 8.3% of men and 13.9% of women responded “a lack
375 of a place or facility” as the reason preventing them from exercising regularly, whereas 5.8%
376 of men and 18.3% of women responded “dislike of exercise” as the reason [1]. Compared
377 with men, women in their 20 s socialize less owing to the increased time spent at home and
378 have less access to places and facilities where they can exercise, which can easily reduce the
379 physical activity level.

380 Frequently dining out was another factor related with weight gain based on multivariate
381 analysis in this study. However, the ECDF ranking of frequently dining out is low; therefore,
382 it could cause weight gain independently of lifestyle changes voluntarily imposed owing to
383 COVID-19. In our questionnaire survey, although there were students who habitually dined
384 out daily, they were few in number, accounting for only 2.7% and 1.8% before and during the
385 mild lockdown, respectively (data not shown). In a report of Japanese adults in 2015, the
386 proportion of obese individuals accounted for 40.0% of the population who dined out at least
387 twice a day and 22.7%–28.9% of the population who dined out less than twice a day [27],

388 suggesting a relationship between frequently dining out and weight gain from prior to the
389 COVID-19 pandemic.

390 The present study has several limitations. First, it is a study based on questionnaire
391 responses, and there is no objective data, such as height and weight of all participants;
392 therefore, biases attributed to self-reporting as well as the subject sample being limited to
393 students who provided consent are both possible. Second, the study includes students of a
394 single Japanese institution, and it is possible that generalization will be difficult. To
395 investigate a causal relationship, a prospective study is required in future.

396 **Conclusions**

397 In the present study, we investigated lifestyle factors that influence weight gain in
398 university students in a particular environment, i.e., the mild lockdown, and confirmed a
399 relationship with factors, such as gaming time, prolonged time spent at home, and night owl
400 sleeping rhythm. Future studies should be conducted to identify the role of early intervention
401 and provide further insights into the conclusions of the study.

402

403 **Acknowledgments**

404 We thank Mr. Masaki Miwa, Ms. Hiroko Yamamoto, and Ms. Chikako Yamaura at the
405 Diabetes care support center, Nagasaki University for their assistance in conducting the
406 survey, and Ulatus (www.ulatus.jp/) for language editing.

407 **Institutional review board statement**

408 The study was conducted in accordance with the Declaration of Helsinki, and approved by
409 the ethical review board of Nagasaki University (approval number: 20062604).

410 **Informed consent statement**

411 Informed consent was obtained from all subjects involved in the study. Written informed
412 consent has been obtained from the patients to publish this paper.

413 **Data availability statement**

414 The data presented in this study are available on request from the corresponding author. The
415 data are not publicly available due to prevent misuse and interpretation of data.

416 **Author Contributions**

417 Conceptualization, N.A., K.A., H.A., and M.K.; methodology, formal analysis, S.M.;
418 investigation, K.A., resources, T.N. and M.K.; writing - original draft preparation, S.M.,
419 N.A., K.A. and M.K.; funding acquisition, A.K. (Atsushi Kawakami) and M.K.; writing - re-
420 view and editing, N.A.; visualization, S.M.; supervision, N.A., A.K. and M.K.; project
421 administra-tion, M.K. All authors have read and agreed to the published version of the
422 manuscript.

423

424 **References**

- 425 1. Mokdad AH, Serdula MK, Dietz WH, Bowman BA, Marks JS, Koplan JP. The
426 spread of the obesity epidemic in the United States, 1991-1998. JAMA. 1999;282:
427 1519-1522. doi: [10.1001/jama.282.16.1519](https://doi.org/10.1001/jama.282.16.1519).
- 428 2. Ministry of Health, Labour and Welfare. The National Health and Nutrition Survey
429 of the Ministry of Health, Labour and Welfare. 2019. Available from:
430 [https://www.mhlw.go.jp/stf/seisakunitsuite/bunya/kenkou_iryuu/kenkou/eiyuu/r1-](https://www.mhlw.go.jp/stf/seisakunitsuite/bunya/kenkou_iryuu/kenkou/eiyuu/r1-houkoku_00002.html)
431 [houkoku_00002.html](https://www.mhlw.go.jp/stf/seisakunitsuite/bunya/kenkou_iryuu/kenkou/eiyuu/r1-houkoku_00002.html)
- 432 3. Kobayashi M, Ogawa S, Tayama J, Sagara I, Takeoka A, Bernick P, et al. Intra-
433 abdominal fat accumulation is an important predictor of metabolic syndrome in
434 young adults. Medicine. 2020;99: e22202. doi: [10.1097/MD.00000000000022202](https://doi.org/10.1097/MD.00000000000022202).

- 435 4. Lippi G, Henry BM, Bovo C, Sanchis-Gomar F. Health risks and potential
436 remedies during prolonged lockdowns for coronavirus disease 2019 (COVID-19).
437 *Diagnosis (Berl)*. 2020;7: 85-90. doi: [10.1515/dx-2020-0041](https://doi.org/10.1515/dx-2020-0041).
- 438 5. Kirwan R, McCullough D, Butler T, Perez de Heredia F, Davies IG, Stewart C.
439 Sarcopenia during Covid-19 lockdown restrictions: long-term health effects of
440 short-term muscle loss. *GeroScience*. 2020;42: 1547-1578. doi: [10.1007/s11357-
441 020-00272-3](https://doi.org/10.1007/s11357-020-00272-3).
- 442 6. Nelson MC, Story M, Larson NI, Neumark-Sztainer D, Lytle LA. Emerging
443 adulthood and collegeaged youth: an overlooked age for weight-related behavior
444 change. *Obesity (Silver Spring)*. 2008;16: 2205-2211. doi: [10.1038/oby.2008.365](https://doi.org/10.1038/oby.2008.365).
- 445 7. Buysse DJ, Reynolds CF, Monk TH, Berman SR, Kupfer DJ. The Pittsburgh Sleep
446 Quality Index: a new instrument for psychiatric practice and research. *Psychiatry
447 Res*. 1989;28: 193-213. doi: [10.1016/0165-1781\(89\)90047-4](https://doi.org/10.1016/0165-1781(89)90047-4).
- 448 8. R Core Team. R: A Language and Environment for Statistical Computing. 2020.
449 Available from: <https://www.R-project.org/>
- 450 9. World Health Organization. *International Classification of Diseases*. 11th revision.
451 <https://icd.who.int/en/ICD-11>.
- 452 10. Darvesh N, Radhakrishnan A, Lachance CC, Nincic V, Sharpe JP, Ghassemi M, et
453 al. Exploring the prevalence of gaming disorder and internet gaming disorder: a
454 rapid scoping review. *Syst Rev*. 2020;9: 68. doi: [10.1186/s13643-020-01329-2](https://doi.org/10.1186/s13643-020-01329-2).
- 455 11. Saunders JB, Hao W, Long J, King DL, Mann K, Fauth-Bühler M, et al. Gaming
456 disorder: its delineation as an important condition for diagnosis, management, and
457 prevention. *J Behav Addict*. 2017;6: 271-279. doi: [10.1556/2006.6.2017.039](https://doi.org/10.1556/2006.6.2017.039).
- 458 12. Oka T, Hamamura T, Miyake Y, Kobayashi N, Honjo M, Kawato M, et al.
459 Prevalence and risk factors of internet gaming disorder and problematic internet

- 460 use before and during the COVID-19 pandemic: a large online survey of Japanese
461 adults. *J Psychiatr Res.* 2021;142: 218-225. doi: [10.1016/j.jpsychires.2021.07.054](https://doi.org/10.1016/j.jpsychires.2021.07.054).
- 462 13. Robinson TN, Banda JA, Hale L, Lu AS, Fleming-Milici F, Calvert SL, et al.
463 Screen media exposure and obesity in children and adolescents. *Pediatrics.*
464 2017;140: S97-S101. doi: [10.1542/peds.2016-1758K](https://doi.org/10.1542/peds.2016-1758K).
- 465 14. Kim NR, Hwang SS, Choi JS, Kim DJ, Demetrovics Z, Király O, et al.
466 Characteristics and psychiatric symptoms of internet gaming disorder among adults
467 using self-reported DSM-5 criteria. *Psychiatry Investig.* 2016;13: 58-66. doi:
468 [10.4306/pi.2016.13.1.58](https://doi.org/10.4306/pi.2016.13.1.58).
- 469 15. Hinojo-Lucena FJ, Aznar-Díaz I, Cáceres-Reche MP, Trujillo-Torres JM, Romero-
470 Rodríguez JM. Problematic internet use as a predictor of eating disorders in
471 students: a systematic review and meta-analysis study. *Nutrients.* 2019;11: 2151.
472 doi: [10.3390/nu11092151](https://doi.org/10.3390/nu11092151).
- 473 16. Kristensen JH, Pallesen S, King DL, Hysing M, Erevik EK. Problematic gaming
474 and sleep: a systematic review and meta-analysis. *Front Psychiatry.* 2021;12:
475 675237. doi: [10.3389/fpsy.2021.675237](https://doi.org/10.3389/fpsy.2021.675237).
- 476 17. Zou Y, Xia N, Zou Y, Chen Z, Wen Y. Smartphone addiction may be associated
477 with adolescent hypertension: a cross-sectional study among junior school students
478 in China. *BMC Pediatr.* 2019;19: 310. doi: [10.1186/s12887-019-1699-9](https://doi.org/10.1186/s12887-019-1699-9).
- 479 18. Lam LT. Internet gaming addiction, problematic use of the internet, and sleep
480 problems: a systematic review. *Curr Psychiatry Rep.* 2014;16: 444. doi:
481 [10.1007/s11920-014-0444-1](https://doi.org/10.1007/s11920-014-0444-1).
- 482 19. Alimoradi Z, Lin CY, Broström A, Bülow PH, Bajalan Z, Griffiths MD, et al.
483 Internet addiction and sleep problems: a systematic review and meta-analysis.
484 *Sleep Med Rev.* 2019;47: 51-61. doi: [10.1016/j.smrv.2019.06.004](https://doi.org/10.1016/j.smrv.2019.06.004).

- 485 20. Carter B, Rees P, Hale L, Bhattacharjee D, Paradkar MS. Association between
486 portable screen-based media device access or use and sleep outcomes: a systematic
487 review and meta-analysis. *JAMA Pediatr.* 2016;170: 1202-1208. doi:
488 [10.1001/jamapediatrics.2016.2341](https://doi.org/10.1001/jamapediatrics.2016.2341).
- 489 21. Kenney EL, Gortmaker SL. United States adolescents' television, computer,
490 videogame, smartphone, and tablet use: associations with sugary drinks, sleep,
491 physical activity, and obesity. *J Pediatr.* 2017;182: 144-149. doi:
492 [10.1016/j.jpeds.2016.11.015](https://doi.org/10.1016/j.jpeds.2016.11.015).
- 493 22. Taleb Z, Karpowicz P. Circadian regulation of digestive and metabolic tissues. *Am*
494 *J Physiol Cell Physiol.* 2022;323: C306-C321. doi: [10.1152/ajpcell.00166.2022](https://doi.org/10.1152/ajpcell.00166.2022).
- 495 23. Farhud D, Aryan Z. Circadian rhythm, lifestyle and health: a narrative review. *Iran*
496 *J Public Health.* 2018;47: 1068-1076.
- 497 24. Pallavicini F, Pepe A, Mantovani F. The effects of playing video games on stress,
498 anxiety, depression, loneliness, and gaming disorder during the early stages of the
499 COVID-19 pandemic: PRISMA systematic review. *Cyberpsychol Behav Soc*
500 *Netw.* 2022;25: 334-354. doi: [10.1089/cyber.2021.0252](https://doi.org/10.1089/cyber.2021.0252).
- 501 25. Örnek BY, Gündoğmuş İ. The effects of smartphone and internet gaming addiction
502 on eating attitudes among university students. *Psychiatry Investig.* 2022;19: 1-8.
503 doi: [10.30773/pi.2021.0230](https://doi.org/10.30773/pi.2021.0230).
- 504 26. Shen C, Dumontheil I, Thomas M, Rösli M, Elliott P, Toledano M. Digital
505 technology use and bmi: evidence from a cross-sectional analysis of an adolescent
506 cohort study. *J Med Internet Res.* 2021;23: e26485. doi: [10.2196/26485](https://doi.org/10.2196/26485).
- 507 27. Ministry of Health, Labour and Welfare. The National Health and Nutrition Survey
508 of the Ministry of Health, Labour and Welfare. 2015. Available from:
509 <https://www.mhlw.go.jp/bunya/kenkou/eiyou/h27-houkoku.html>

510 **Supporting information**

511 **S1 Fig. Study flow chart.** In 2020, of the 6,065 students who received medical examinations,
512 2,344 did not provide consent for participation or a complete response. In 2021, of the 6,675
513 students who received medical examinations, 3,616 did not provide consent for participation.
514 We analyzed the data from the questionnaire with 3,721 and 3,059 students in 2020 and 2021,
515 respectively. After 1,783 students of participants in 2021 received the 2019 medical
516 examinations, we evaluated the amount of change between the questionnaire response and
517 actual body weight measurement. In the 2020 medical examination, weight measurements
518 were not conducted for infection control.

519 **S2 Fig. Self-reported weight change in the fiscal year 2021 questionnaire and the**
520 **amount of actual weight change based on student health examination data from fiscal**
521 **year 2019 to 2021.** Δ BW: actual weight change based on student health examination data
522 from fiscal year 2019 to 2021 (kg); Weight gain group: the student group who responded that
523 there was a weight gain of ≥ 3 kg in the 2021 survey about weight change from before to
524 during the mild lockdown; Non-weight gain group: the student group that excluded those in
525 the “Weight gain group” from the total, i.e., those who responded that there was a weight
526 gain of < 3 kg, no weight change, weight loss of < 3 kg, or weight loss of ≥ 3 kg in the 2021
527 survey about weight change from before to during the mild lockdown. Error bars range from
528 (first quartile – quartile range) \times 1.5 to (third quartile + quartile range) \times 1.5.

529 **S1 Table. Confusion matrix and Cronbach’s α of self-reported weight change in the**
530 **fiscal year 2021 questionnaire and the amount of actual weight change based on student**
531 **health examination data from fiscal year 2019 to 2021.**

532 **S2 Table. Binary logistic regression analysis for the lifestyle factors associated with a**
533 **weight gain of > 3 kg during the mild lockdown in male students.**

534 **S3 Table. Binary logistic regression analysis for the lifestyle factors associated with a**
535 **weight gain of ≥ 3 kg during the mild lockdown in female students.**

536

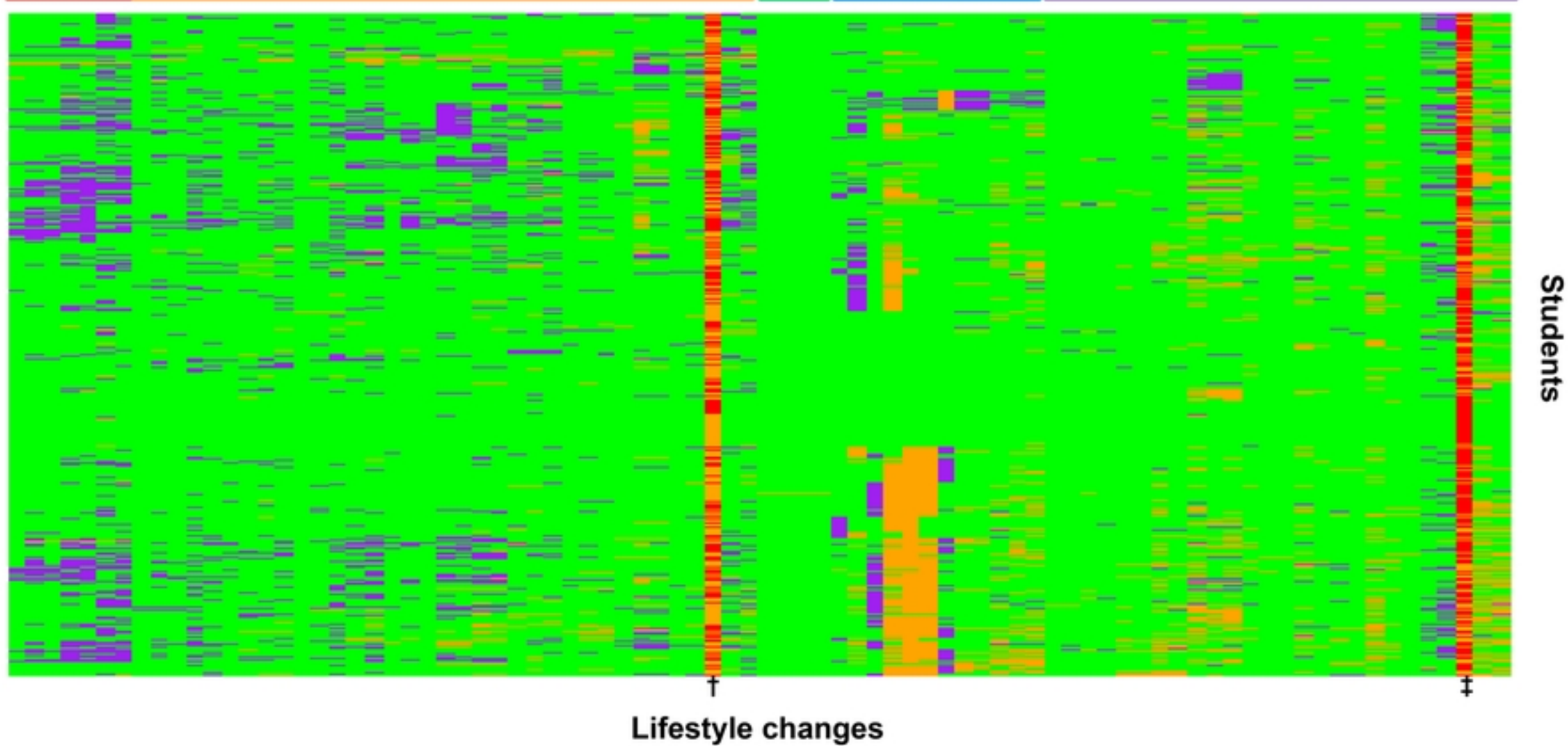
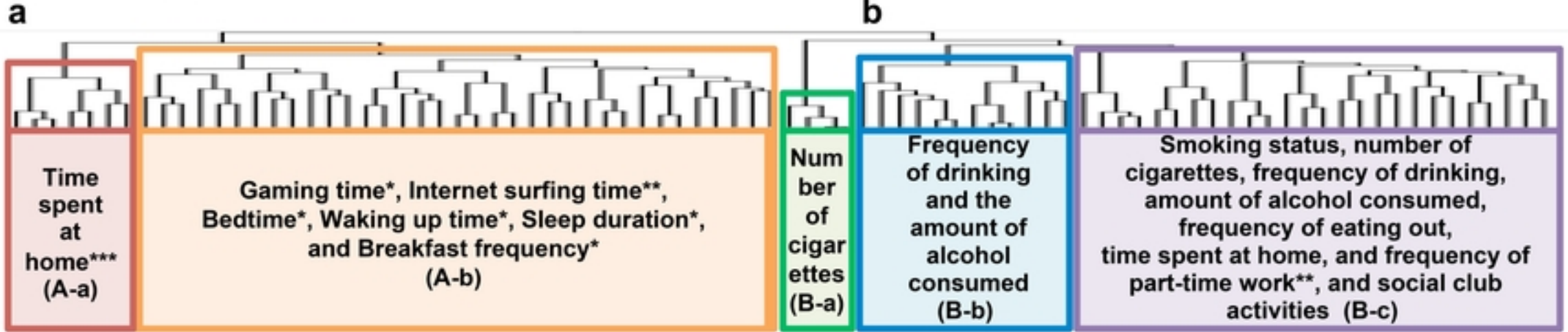
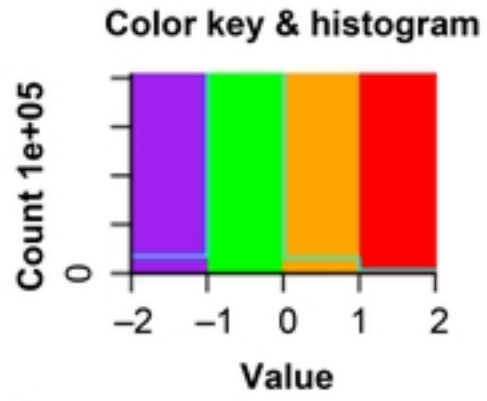


Figure 1

Fiscal Year 2021

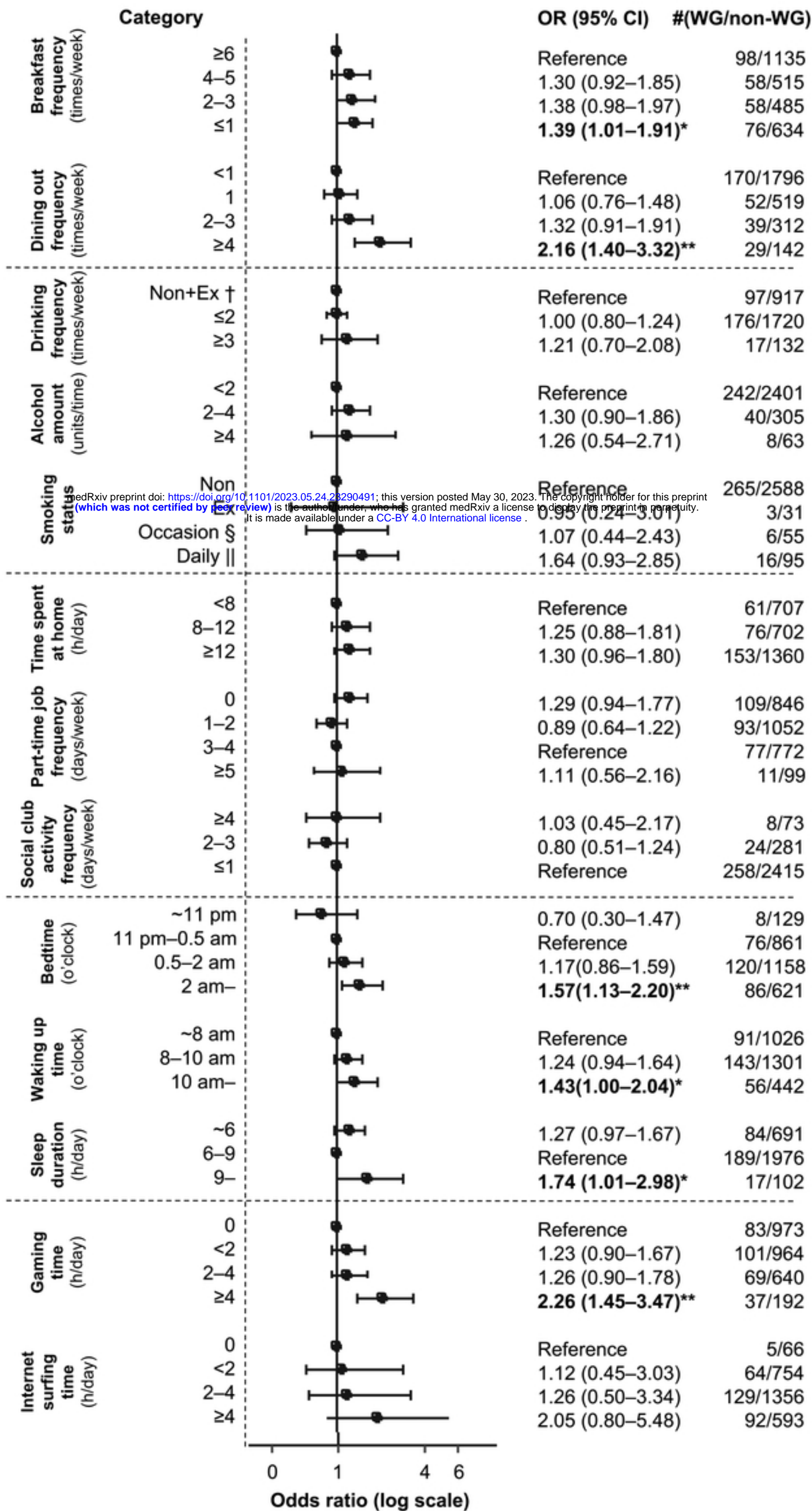


Figure 2

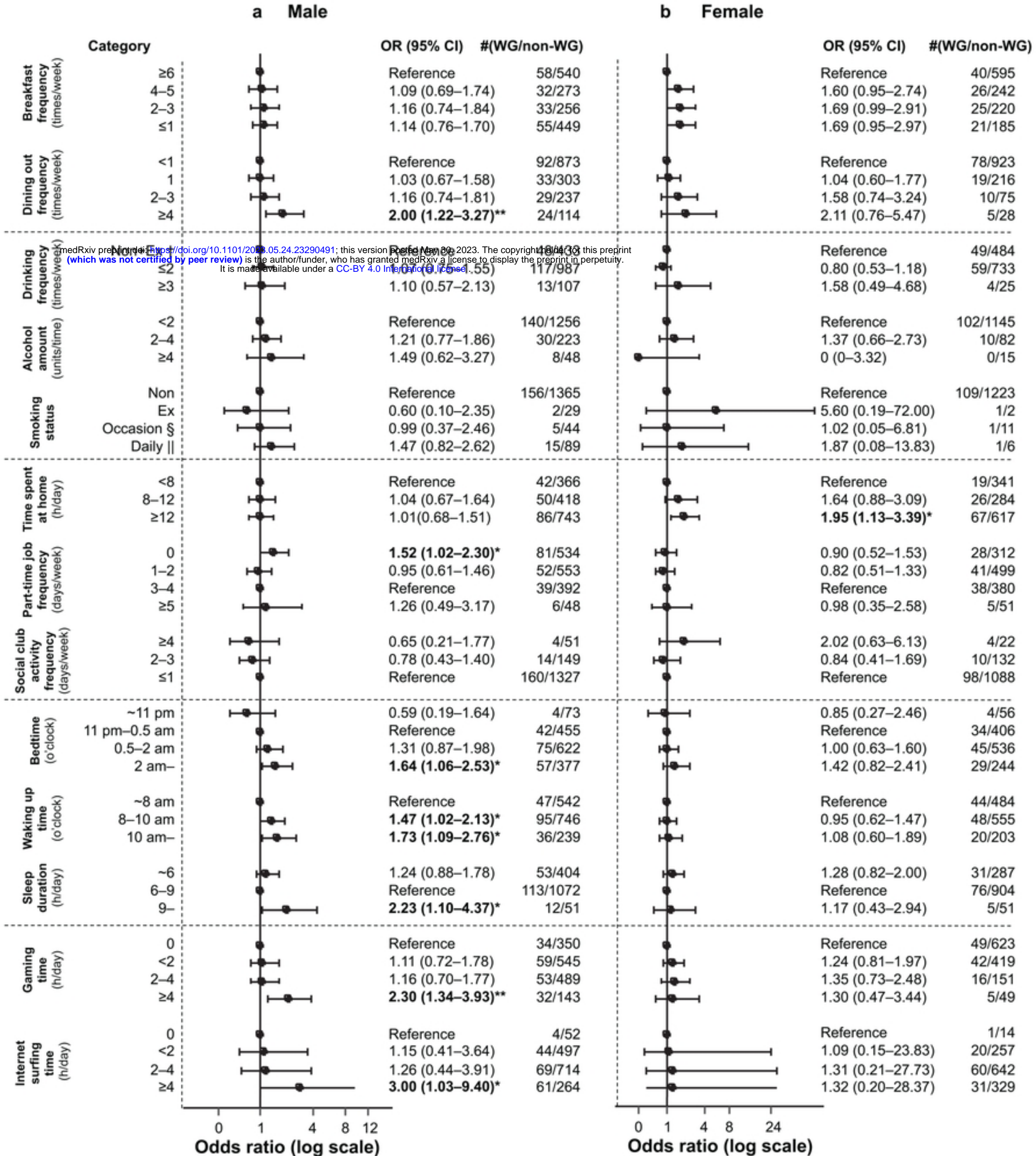


Figure 3