

## **Percutaneous coronary intervention with drug-eluting stent is associated with better survival than coronary artery bypass grafting in Taiwan dialysis patients**

**Brief title:** Coronary revascularization in dialysis patients

Szu-Yu Pan, MD, PhD<sup>a,b</sup>, Ju-Yeh Yang, MD<sup>c,d</sup>, Nai-Chi Teng, MSc<sup>e</sup>, Yun-Yi Chen, PhD<sup>f,g</sup>, Shi-Heng Wang, PhD<sup>h</sup>, Chien-Lin Lee, MD<sup>i</sup>, Kang-Lung Chen, MD<sup>j</sup>, Yen-Ling Chiu, MD, PhD<sup>c,k,l</sup>, Shih-Ping Hsu, MD, PhD<sup>c</sup>, Yu-Sen Peng, MD, PhD<sup>c</sup>, Yung-Ming Chen, MD<sup>b</sup>, Shuei-Liong Lin, MD, PhD<sup>b,m</sup>, Likwang Chen, PhD<sup>e</sup>

### **Authors affiliations:**

<sup>a</sup>Department of Integrated Diagnostics and Therapeutics, National Taiwan University Hospital, Taipei, Taiwan.

<sup>b</sup>Division of Nephrology, Department of Internal Medicine, National Taiwan University Hospital, Taipei, Taiwan.

<sup>c</sup>Division of Nephrology, Department of Internal Medicine, Far Eastern Memorial Hospital, New Taipei City, Taiwan.

<sup>d</sup>Institute of Health Policy and Management, College of Public Health, National Taiwan University, Taipei, Taiwan.

<sup>e</sup>Institute of Population Health Sciences, National Health Research Institutes, Zhunan, Taiwan.

<sup>f</sup>Department of Research, Shin-Kong Wu Ho-Su Memorial Hospital, Taipei, Taiwan.

<sup>g</sup>Institute of Hospital and Health Care Administration, National Yang Ming Chiao Tung University, Taipei, Taiwan.

<sup>h</sup>National Center for Geriatrics and Welfare Research, National Health Research Institutes, Yunlin, Taiwan.

<sup>i</sup>Department of Cardiology, Far Eastern Memorial Hospital, New Taipei City, Taiwan.

<sup>j</sup>Department of Cardiovascular Surgery, Far Eastern Memorial Hospital, New Taipei City, Taiwan.

<sup>k</sup>Graduate Program in Biomedical Informatics, Department of Computer Science and Engineering, College of Informatics, Yuan Ze University, Taoyuan, Taiwan.

<sup>l</sup>Graduate Institute of Clinical Medicine, National Taiwan University College of Medicine, Taipei, Taiwan.

<sup>m</sup>Graduate Institute of Physiology, College of Medicine, National Taiwan University, Taipei, Taiwan

**Word count:** Abstract 299; Text 2,955 (excluding abstract, references, the article information section, tables, and figure legends)

**Address for correspondence:** Dr. Likwang Chen, National Health Research Institutes, No. 35 Keyan Road, Zhunan Town, Miaoli 35053, Taiwan. E-mail: 881013nhri@gmail.com

## **Abstract**

### Rationale and Objective

To study the comparative effectiveness of percutaneous coronary intervention with drug-eluting stent and coronary artery bypass grafting in dialysis patients.

### Study Design

Retrospective observational cohort study.

### Setting and Participants

This population-based study identified dialysis patients hospitalized for coronary revascularization between January 1, 2009 and December 31, 2015 in Taiwan National Health Insurance Research Database.

### Exposures

Percutaneous coronary intervention with drug-eluting stent versus coronary artery bypass grafting.

### Outcomes

All-cause mortality, in-hospital mortality, and repeat revascularization.

### Analytical Approach

Propensity scores were used to match patients. Cox proportional hazards models and logistic regression models were constructed to examine associations between revascularization strategies and mortality. Interval Cox models were fit to estimate time-varying hazards during different periods.

### Results

A total of 1,840 propensity score-matched dialysis patients were analyzed. Coronary artery bypass grafting was associated with higher in-hospital mortality (coronary artery bypass grafting vs. percutaneous coronary intervention with drug-eluting stent, crude mortality rate 12.5% vs. 3.3%; adjusted odds ratio 5.22; 95% confidence interval [CI] 3.42-7.97;  $p < 0.001$ ), and longer hospitalization duration (median [interquartile range], 20 [14-30] days vs. 3 [2-8] days,  $p < 0.001$ ). After discharge, repeat revascularization, acute coronary syndrome, and repeat hospitalization all occurred more frequently in the percutaneous coronary intervention with drug-eluting stent group. Importantly, with a median follow-up of 2.8 years, coronary artery bypass grafting was significantly associated with a higher risk of all-cause overall mortality (adjusted hazard ratio 1.19, 95% CI 1.05-1.35,  $p < 0.01$ ) in the multivariable Cox proportional hazard model. Sensitivity and subgroup analyses yielded consistent results.

### Limitations

Observational study with mainly Asian ethnicity.

### Conclusions

Percutaneous coronary intervention with drug-eluting stent may be associated with better survival than coronary artery bypass grafting in dialysis patients. Future studies are warranted to confirm this finding.

## Introduction

In patients with end-stage kidney disease (ESKD), cardiovascular mortality is the leading cause of death.<sup>1</sup> Coronary artery disease (CAD) is an important etiology of cardiovascular mortality. Coronary revascularization with either coronary artery bypass grafting (CABG) or percutaneous coronary intervention (PCI) is a critical therapeutic strategy in addition to medical treatment.

In the context of non-emergent multi-vessel CAD among the general population, CABG is associated with better long-term outcome than PCI.<sup>2-5</sup> However, uremic milieu exposes ESKD patients to several non-traditional cardiovascular risk factors, and the benefit of CABG over PCI is less clear.<sup>6,7</sup> In patients with chronic kidney disease (CKD), a pooled analysis of patient-level data from RCTs reported that CABG, compared with PCI, did not improve survival, although both subsequent myocardial infarction and revascularization were reduced.<sup>8</sup> However, none of the included CKD patients was under dialysis. One observational study, performed by Chang TI and colleagues by using data from the United States Renal Data System (USRDS), reported a worse in-hospital survival for ESKD patients receiving CABG compared with those receiving PCI between 1997 and 2009. However, the long-term outcome was better with CABG.<sup>9</sup> Mainly based on this study, the European Society of Cardiology and the European Association for Cardio-Thoracic Surgery (ESC/EACTS) guidelines suggest a possibly favorable role of CABG over PCI in dialysis patients with CAD.<sup>10,11</sup>

Importantly, studies in dialysis patients from the United States (US) and Taiwan reported that PCI with DES was associated with not only reduced revascularization but also decreased mortality compared with PCI with bare metal stent (BMS),<sup>12,13</sup> and the 2018 ESC/EACTS

guideline suggested a superior role of DES to BMS in CKD patients. It is thus desirable to examine the comparative effectiveness of CABG and PCI with DES in dialysis patients. However, so far there has been no large-scale RCT demonstrating unequivocal advantage of CABG over PCI with DES in ESKD patients. The landmark SYNTAX and EXCEL trials included only 6 and 3 dialysis patients, respectively.<sup>14-16</sup> One large observational study using the URSRDS database reported epidemiologic data of survival and repeat revascularization after CABG, BMS, and DES, but did not make a comparison between these strategies.<sup>17</sup> Another large USRDS study compared CABG with PCI, but the stent types of PCI were not specified.<sup>9</sup> A recent meta-analysis of observational studies and post-hoc analyses of RCTs identified 801 dialysis patients and reported no difference in all-cause mortality between CABG and PCI with DES.<sup>18</sup> However, the single largest observational study, including 486 propensity score-matched dialysis patients, reported CABG was associated with a lower risk for mortality and revascularization.<sup>19</sup> Considering the paucity of evidence, study on this issue is urgently needed.

To analyze the outcome of CABG versus PCI with DES in ESKD patients, we used the Taiwan National Health Insurance Research Database (NHIRD).<sup>20</sup> Taiwan NHI program has coverage of up to 99% for the whole citizens and the database is representative of the national population. We included 4,165 dialysis patients and analyzed 1,840 propensity score-matched subjects for comparison of CABG versus PCI with DES performed between Jan 1, 2009 to Dec 31, 2015. Surprisingly, CABG was associated with increased both in-hospital and long-term mortality, although repeat revascularization and subsequent acute coronary syndrome (ACS) were reduced.

## Methods

## Study population

Our study used the NHIRD through Applied Health Research Data Integration Service from Taiwan's National Health Insurance Administration (NHIA). This retrospective cohort study was approved by the Institutional Review Board of National Health Research Institutes, Taiwan (EC1060402-E). The individual information in the NHIRD was encrypted, therefore the requirement to obtain informed consent was waived. We used the data between Jan 1, 2008 and Dec 31, 2017 in the database to identify dialysis patients hospitalized for revascularization by CABG or PCI with DES in Taiwan (eFigure 1 in the **Supplement**). The NHIRD has been successfully used to analyze outcomes of specified populations such as ESKD patients.<sup>13,21</sup> We set the cohort entry date between Jan 1, 2009 to Dec 31, 2015 to ensure an observation period of at least 1 year before cohort entry and 2 years after revascularization. The index hospitalization was defined as the first admission for coronary revascularization by either CABG or PCI with DES in ESKD patients, and the index date was the date of revascularization. To avoid the coding error frequently encountered in database study, we defined the dialysis population and revascularization intervention with procedure codes, which are directly linked to reimbursement in NHI and less prone to miscoding. The use of procedure codes and material codes in Taiwan NHI was briefly introduced in the Online-Only **Supplement**.

## Outcome

The primary outcome of interest was survival after revascularization. Survival was determined from the index date to death or a censoring date. Patients were censored if they received kidney or heart transplantation after the index date, lost to follow-up, or survived

through Dec 31, 2017. To estimate the short-term and long-term effects of revascularization on crude all-cause mortality, we calculated in-hospital mortality rate, and cumulative mortality rates at 1, 2, 3, 4, and 5 years. Kaplan-Meier plot was used to visualize the difference in unadjusted survival between groups. The adjusted odds ratio of CABG over PCI with DES for in-hospital mortality was estimated in the logistic regression model. Adjusted hazard ratios (HRs) for 1, 2, 3, 4, 5-year, and overall mortality were estimated in the Cox proportional hazard model.<sup>22</sup> Adjusted survival curves based on a Cox model using baseline statement were used to demonstrate adjusted survival probabilities after revascularization. As secondary outcomes, we analyzed the frequency of repeat revascularization, ACS after the index hospitalization, and repeat hospitalization. Repeat revascularization procedures included CABG and PCI with or without DES. ACS included ST-elevation myocardial infarction (STEMI), non-ST elevation myocardial infarction (NSTEMI), and unstable angina (UA).

In the Online-Only Supplement, we provide details for the description of the selection of patients into analysis, covariates, propensity score matching, and statistical analyses.

## **Results**

### **The patients, crude mortality rate, and duration of hospitalization**

We identified 4,165 ESKD patients receiving revascularization by either CABG or PCI with DES during the index hospitalization (eFigure 1 in the **Supplement**). Among the 4,165 patients, 1,023 received CABG, and 3,142 received PCI with DES. Compared with patients receiving PCI with DES, patients receiving CABG were younger, more likely to be male, less likely to have an intervention on only one vessel, more likely to have comorbid CAD, congestive heart failure

(CHF), and dyslipidemia, less likely to have comorbid cancer, and less likely to have UA or NSTEMI during the index hospitalization (**Table 1**). Notably, Shock or respiratory failure within 24 hours before revascularization was more likely to develop in patients receiving CABG than PCI with DES. In addition, patients were more likely to receive CABG than PCI with DES in hospitals with a high volume of CABG or medical centers. To minimize the inequity of baseline characteristics, we performed a 1:1 propensity score matching and identified 920 matched pairs. After matching, all the covariates were well balanced (**Table 1**).

The median and interquartile range of follow-up duration were 2.7 (0.9-4.4), 2.9 (1.5-4.4), and 2.8 (1.2-4.4) years in the CABG, PCI with DES, and the whole cohort, respectively. The crude mortality rates of matched patients, including mortality rates at the index hospitalization, at 1, 2, 3, 4, and 5 years, were calculated. Surprisingly, the cumulative mortality rates were significantly higher in the CABG than in the PCI with DES group at all the analyzed time points (eTable 1 in the **Supplement**). Kaplan-Meier plot also showed a significant survival advantage in the PCI with DES group (**Figure 1**). The duration of the index hospitalization was longer in the CABG group (CABG 20 [14-30] days vs. PCI with DES 3 [2-8] days,  $p < 0.001$ , eTable 1 in the **Supplement**).

### **Association between different revascularization strategies and survival**

We analyzed in-hospital mortality in the logistic regression model and long-term mortality in the Cox proportional hazard model. Covariates adjusted in the models included age, sex, number of treated coronary vessels, clinical condition before revascularization, UA and NSTEMI during the index hospitalization, utilization of medical resource before the index hospitalization

(frailty), comorbidity, medication, hospital type, and hospital volume for CABG. In the adjusted logistic regression model, CABG was strongly associated with increased in-hospital mortality over PCI with DES (adjusted OR 5.22, 95% CI 3.42-7.97,  $p < 0.001$ , **Table 2** and eTable 2 in the **Supplement**). Importantly, in the adjusted Cox proportional hazard model during a median follow-up of 2.8 years, CABG was also associated with increased overall all-cause mortality over PCI with DES (adjusted HR 1.19, 95% CI 1.05-1.35,  $p < 0.01$ , **Table 2** and eTable 3 in the **Supplement**). The HRs for all-cause mortality at 1, 2, 3, 4, and 5 years were also increased in the CABG group (**Table 2**). The adjusted survival curves for overall survival also showed superior survival in the PCI with DES group (eFigure 2 in the **Supplement**).

Notably, although CABG was associated with higher overall mortality, PCI with DES was associated with more subsequent ACS, more repeat revascularization, and more repeat hospitalization (eTable 4 in the **Supplement**).

### **Sensitivity and subgroup analyses**

With regard to overall mortality (**Table 3**) and in-hospital mortality (eTable 5 in the **Supplement**), similar results were yielded in the sensitivity analyses of the unmatched cohort, after exclusion of mortality within 3 days after revascularization, after exclusion of patients with UA or NSTEMI during the index hospitalization, after exclusion of patients with unstable clinical conditions within 24 hours before revascularization, and after exclusion of patients receiving intervention on only one coronary artery. Because in-hospital mortality negatively impacted long-term survival in patients receiving CABG, we analyzed overall mortality in patients who survived the index hospitalization and set the date of discharge from index



hospitalization as day 0 in the Cox model. Surprisingly, CABG was not associated with better long-term survival over PCI with DES even after the exclusion of patients who died during the hospitalization (HR 1.02, 95% CI 0.89-1.17,  $p = 0.74$ ). Interval Cox model also revealed that PCI with DES was non-inferior to CABG during different time periods, and CABG was associated with higher mortality hazard in the first 2 years after revascularization, likely due to higher perioperatively in-hospital mortality risk (**Table 3**). Notably, when repeat revascularization was included in the composite outcomes, CABG was significantly associated with decreased HR risks compared with PCI with DES (**Table 3**).

We performed several pre-defined subgroup analyses to test the heterogeneity among subgroups. With regard to the overall mortality, the results were consistent across most subgroups (**Figure 2**). Notably, a significant interaction between revascularization strategy and the existence of prior CAD was identified. With regard to in-hospital mortality, the results in most subgroups were largely consistent (eFigure 3 in the **Supplement**). Interestingly, possible heterogeneity of treatment effect was identified according to clinical condition within 24 hours before revascularization and prior hospitalization duration (as a proxy for frailty).

## **Discussion**

In our cohort of Taiwan ESKD patients, in contrast to prior observed long-term survival benefits with CABG,<sup>9</sup> we found that PCI with DES is associated with lower in-hospital mortality and better long-term survival.

### **The association of different revascularization strategies and in-hospital mortality**

Compared with PCI with DES, patients receiving CABG had increased in-hospital mortality and increased length of hospitalization. The findings are consistent with prior observational studies.<sup>17,23-26</sup> In our cohort, the crude in-hospital mortality rates in the unmatched cohort were 11.8% and 2.3% in the CABG and PCI with DES groups, respectively (eTable 1 in the **Supplement**). The duration of hospitalization was 20 (14-30) and 3 (2-8) days in the CABG and PCI with DES groups, respectively. The in-hospital mortality rate and duration of hospitalization in our study were comparable to prior reports of ESKD patients receiving CABG in the US (in-hospital mortality rate 5.4% ~ 31%, duration of hospitalization 13 ~ 25 days).<sup>25</sup> It is likely that the increased in-hospital mortality and hospitalization duration arose from surgery-related perioperative mortality and complications in frail and heavily comorbid ESKD patients.

### **The association of different revascularization strategies and long-term mortality**

We found that PCI with DES was associated with better long-term survival than CABG in Taiwan ESKD patients. Even after excluding patients who died during the index hospitalization in the sensitivity analysis (**Table 3**), PCI with DES was non-inferior to CABG in long-term survival. The Interval Cox model suggested the survival benefit in the PCI with DES group may be largely derived from the reduction of early mortality after revascularization. However, PCI with DES was associated with higher risks for composite outcomes comprising death and repeat revascularization.

Notably, the cumulative 5-year survival probability of ESKD patients after revascularization was much higher in our cohort (CABG 38.7% and PCI with DES 41.9% in the matched cohort, **Figure 1**), compared with reports from URSRD (CABG 28% and PCI with DES

24%).<sup>17</sup> Interestingly, in one Japanese cohort investigating mortality risk after revascularization in ESKD patients, the cumulative 5-year all-cause mortality (49.9% after CABG vs. 52.3% after PCI with DES) was very similar to our study (55.0% after CABG vs. 50.0% after PCI with DES, eTable 1 in the **Supplement**).<sup>23</sup> The cause of improved long-term survival in Taiwan and Japan ESKD patients is not clear. The reason for the absence of long-term survival benefits associated with CABG is also unclear. Both biological and non-biological factors may contribute.

International comparison indicates a marked variation in overall survival in dialysis patients, which may influence the comparative effectiveness of CABG and PCI with DES.<sup>27-29</sup> According to Dialysis Outcomes and Practice Patterns Study (DOPPS), the crude mortality rate from 2002 to 2008 was 18.1, 15.6, and 5.2 deaths per 100 patient-years in the US, the United Kingdom, and Japan, respectively.<sup>28</sup> Taiwan had a crude mortality rate of around 11.6-11.7 deaths per 100 patient-years during the same time period.<sup>30</sup> Studies reported that ethnic differences may influence the treatment effect and outcome of cardiovascular diseases.<sup>31-33</sup> Although CABG is associated with better long-term survival than PCI in dialysis patients according to USRDS,<sup>9</sup> it is possible that different ethnic backgrounds may modify the outcomes. Interestingly, in the aforementioned USRDS study, the authors reported in their subgroup analyses that non-white non-black race was associated with a reduced benefit of CABG.<sup>9</sup> In Japan, similar to our findings, cohort study and registry analysis showed that CABG was not associated with a better 5-year all-cause mortality rate than PCI in dialysis patients.<sup>23,26</sup>

Notably, although PCI with DES was associated with better long-term survival in our study, repeat revascularization, subsequent ACS, and repeat hospitalization developed more frequently, probably indicating incomplete revascularization. In line with these findings, in Japanese ESKD

patients, although the long-term risks for all-cause mortality were not different in PCI and CABG groups, the risk for repeat coronary revascularization was significantly higher in the PCI group.<sup>23,26</sup> Interestingly, in our cohort the survival of patients after discharge from the index hospitalization in the PCI with DES group is not worse than patients in the CABG group (**Table 3**). According to statistics from the Organization for Economic Co-operation and Development (OECD) and the Ministry of Health and Welfare in Taiwan,<sup>34,35</sup> the number of acute care beds per 1,000 population was 8.0, 3.4, and 2.5 for Japan, the US, and Taiwan, respectively. Since the population density (people per square kilometer of land area) in 2020 is much higher in Taiwan (673) and Japan (345) than in the US (36),<sup>36,37</sup> the acute care bed density (number of acute care beds per square kilometer of land area) is also much higher in Taiwan and Japan than in the US, which may impact the accessibility to timely coronary revascularization. Because the risk of mortality associated with recurrent ACS and incompletely treated CAD may be mitigated by timely repeated revascularization, the higher acute care accessibility in Japan and Taiwan, compared with the US, may also contribute to improved survival in the PCI with DES group. It should also be noticed that CABG might be less commonly performed in Taiwan and Japan than in the US. According to USRDS,<sup>9</sup> more than 50% of ESKD patients with multivessel CAD received CABG for revascularization. However, in our study, only 41.0% of ESKD patients received multivessel revascularization with CABG (**Table 1**). Similarly, in Japan's ESKD cohort, CABG was used as a multivessel revascularization strategy in only 27-28% of dialysis patients.<sup>23,26</sup> As a result, only 19.3% of CABG in Taiwan (**Table 1**), compared with 85.1% in the US, was performed at high-volume hospitals.<sup>38</sup> Whether the increased utilization of PCI over CABG in Taiwan and Japan ESKD patients influenced clinical outcomes remains unclear.

## **Study limitations**

Several limitations should be mentioned. First, the observational nature precludes a definite conclusion. The selection biases and unmeasured confounders both may contribute to error. Second, clinical condition (Killip stage), vessel condition including distribution of vascular territories (Syntax score),<sup>14</sup> and arterial graft utilization<sup>39,40</sup> were important predictors of survival in patients with CAD. However, these parameters were not available in NHIRD, and we had to adjust for other available surrogate covariates such as clinical conditions before revascularization and the number of coronary arteries treated. Third, we did not analyze the impacts of BMS employed during PCI. However, studies have shown the benefits of DES over BMS in both non-CKD<sup>41-43</sup> and dialysis patients.<sup>12,13</sup> Fourth, we included almost exclusively the Asian population, and the results might not be able to be generalized to other ethnic groups. Finally, we did not compare medical treatment with revascularization. However, in database study, the indication bias for the comparison of conservative treatment versus intervention may be much higher than that of different revascularization strategies.

## **Conclusions**

In Taiwan ESKD patients, PCI with DES was associated with lower in-hospital mortality and better long-term survival, but increased repeat revascularization and subsequent ACS compared with CABG. Future population-based studies in other countries and ethnic groups are warranted to confirm the comparative effectiveness between CABG and PCI with DES in the contemporary era.

## **Acknowledgment**

We thank the Applied Health Research Data Integration Service from Taiwan National Health Insurance Administration for the provision of the National Health Insurance Research Database.

### **Authors' Contributions**

Szu-Yu Pan and Likwang Chen had full access to all the data in the study and take responsibility for the integrity of the data and the accuracy of the data analysis.

Concept and design: Szu-Yu Pan, Ju-Yeh Yang, and Likwang Chen.

Acquisition, analysis, or interpretation of data: All authors.

Drafting of the manuscript: Szu-Yu Pan and Likwang Chen.

Critical revision of the manuscript for important intellectual content: All authors.

Statistical analysis: Ju-Yeh Yang, Nai-Chi Teng, Yun-Yi Chen, Shi-Heng Wang, and Likwang Chen.

### **Conflict of Interest Disclosures**

All the authors declared no competing interests.

### **Funding/Support**

Szu-Yu Pan was supported by the Ministry of Science and Technology (MOST) (106-2314-B-418-006, 107-2314-B-418-001, 108-2314-B-418-004, and 110-2314-B-418-002).

Likwang Chen was supported by the Ministry of Science and Technology (MOST) (106-2314-B-400 -015 -) and intramural funding from the National Health Research Institutes, Taiwan.

### **Role of the Funder/Sponsor**

The funders had no role in the design and conduct of the study; collection, management, analysis, and interpretation of the data; preparation, review, or approval of the manuscript; and decision to submit the manuscript for publication.

### **Disclaimer**

The interpretation and conclusion in this study do not represent the views of the National Health Insurance Administration or the National Health Research Institutes.

## References

1. 2020 USRDS Annual Data Report: Epidemiology of kidney disease in the United States. National Institutes of Health, National Institute of Diabetes and Digestive and Kidney Diseases, Bethesda, MD, 2020.
2. Farkouh ME, Domanski M, Sleeper LA, et al. Strategies for multivessel revascularization in patients with diabetes. *N Engl J Med*. 2012;367(25):2375-2384.  
doi:10.1056/NEJMoa1211585
3. Weintraub WS, Grau-Sepulveda MV, Weiss JM, et al. Comparative effectiveness of revascularization strategies. *N Engl J Med*. 2012;366(16):1467-1476.  
doi:10.1056/NEJMoa1110717
4. Head SJ, Milojevic M, Daemen J, et al. Mortality after coronary artery bypass grafting versus percutaneous coronary intervention with stenting for coronary artery disease: a pooled analysis of individual patient data. *Lancet*. 2018;391(10124):939-948.  
doi:10.1016/s0140-6736(18)30423-9
5. Gaudino M, Hameed I, Farkouh ME, et al. Overall and Cause-Specific Mortality in Randomized Clinical Trials Comparing Percutaneous Interventions With Coronary Bypass Surgery: A Meta-analysis. *JAMA Intern Med*. 2020;180(12):1638-1646.  
doi:10.1001/jamainternmed.2020.4748
6. Shroff GR, Herzog CA. Coronary Revascularization in Patients with CKD Stage 5D: Pragmatic Considerations. *J Am Soc Nephrol*. 2016;27(12):3521-3529.  
doi:10.1681/asn.2016030345
7. Sarnak MJ, Amann K, Bangalore S, et al. Chronic Kidney Disease and Coronary Artery Disease: JACC State-of-the-Art Review. *J Am Coll Cardiol*. 2019;74(14):1823-1838.  
doi:10.1016/j.jacc.2019.08.1017
8. Charytan DM, Desai M, Mathur M, et al. Reduced risk of myocardial infarct and revascularization following coronary artery bypass grafting compared with percutaneous coronary intervention in patients with chronic kidney disease. *Kidney Int*. 2016;90(2):411-421. doi:10.1016/j.kint.2016.03.033



9. Chang TI, Shilane D, Kazi DS, Montez-Rath ME, Hlatky MA, Winkelmayr WC. Multivessel coronary artery bypass grafting versus percutaneous coronary intervention in ESRD. *J Am Soc Nephrol*. 2012;23(12):2042-2049. doi:10.1681/asn.2012060554
10. Windecker S, Kolh P, Alfonso F, et al. 2014 ESC/EACTS Guidelines on myocardial revascularization: The Task Force on Myocardial Revascularization of the European Society of Cardiology (ESC) and the European Association for Cardio-Thoracic Surgery (EACTS) Developed with the special contribution of the European Association of Percutaneous Cardiovascular Interventions (EAPCI). *Eur Heart J*. 2014;35(37):2541-2619. doi:10.1093/eurheartj/ehu278
11. Neumann FJ, Sousa-Uva M, Ahlsson A, et al. 2018 ESC/EACTS Guidelines on myocardial revascularization. *Eur Heart J*. 2019;40(2):87-165. doi:10.1093/eurheartj/ehy394
12. Chang TI, Montez-Rath ME, Tsai TT, Hlatky MA, Winkelmayr WC. Drug-Eluting Versus Bare-Metal Stents During PCI in Patients With End-Stage Renal Disease on Dialysis. *J Am Coll Cardiol*. 2016;67(12):1459-1469. doi:10.1016/j.jacc.2015.10.104
13. Lee HF, Wu LS, Chan YH, et al. Dialysis Patients with Implanted Drug-Eluting Stents Have Lower Major Cardiac Events and Mortality than Those with Implanted Bare-Metal Stents: A Taiwanese Nationwide Cohort Study. *PLoS One*. 2016;11(1):e0146343. doi:10.1371/journal.pone.0146343
14. Serruys PW, Morice MC, Kappetein AP, et al. Percutaneous coronary intervention versus coronary-artery bypass grafting for severe coronary artery disease. *N Engl J Med*. 2009;360(10):961-972. doi:10.1056/NEJMoa0804626
15. Milojevic M, Head SJ, Mack MJ, et al. The impact of chronic kidney disease on outcomes following percutaneous coronary intervention versus coronary artery bypass grafting in patients with complex coronary artery disease: five-year follow-up of the SYNTAX trial. *EuroIntervention*. 2018;14(1):102-111. doi:10.4244/eij-d-17-00620
16. Giustino G, Mehran R, Serruys PW, et al. Left Main Revascularization With PCI or CABG in Patients With Chronic Kidney Disease: EXCEL Trial. *J Am Coll Cardiol*. 2018;72(7):754-765. doi:10.1016/j.jacc.2018.05.057

17. Shroff GR, Solid CA, Herzog CA. Long-term survival and repeat coronary revascularization in dialysis patients after surgical and percutaneous coronary revascularization with drug-eluting and bare metal stents in the United States. *Circulation*. 2013;127(18):1861-1869. doi:10.1161/circulationaha.112.001264
18. Doulamis IP, Tzani A, Tzoumas A, Iliopoulos DC, Kampaktis PN, Briasoulis A. Percutaneous Coronary Intervention With Drug Eluting Stents Versus Coronary Artery Bypass Graft Surgery in Patients With Advanced Chronic Kidney Disease: A Systematic Review and Meta-Analysis. *Semin Thorac Cardiovasc Surg*. 2020. doi:10.1053/j.semtcvs.2020.11.005
19. Bangalore S, Guo Y, Samadashvili Z, Blecker S, Xu J, Hannan EL. Revascularization in Patients With Multivessel Coronary Artery Disease and Chronic Kidney Disease: Everolimus-Eluting Stents Versus Coronary Artery Bypass Graft Surgery. *J Am Coll Cardiol*. 2015;66(11):1209-1220. doi:10.1016/j.jacc.2015.06.1334
20. Hsing AW, Ioannidis JP. Nationwide Population Science: Lessons From the Taiwan National Health Insurance Research Database. *JAMA Intern Med*. 2015;175(9):1527-1529. doi:10.1001/jamainternmed.2015.3540
21. Ruan SY, Teng NC, Huang CT, et al. Dynamic Changes in Prognosis with Elapsed Time on Ventilators among Mechanically Ventilated Patients. *Ann Am Thorac Soc*. 2020;17(6):729-735. doi:10.1513/AnnalsATS.201908-646OC
22. DR C. Regression Models and Life-Tables. *J R Stat Soc Series B Stat Methodol*. 1972;34:187-220.
23. Marui A, Kimura T, Nishiwaki N, et al. Percutaneous coronary intervention versus coronary artery bypass grafting in patients with end-stage renal disease requiring dialysis (5-year outcomes of the CREDO-Kyoto PCI/CABG Registry Cohort-2). *Am J Cardiol*. 2014;114(4):555-561. doi:10.1016/j.amjcard.2014.05.034
24. Herzog CA, Ma JZ, Collins AJ. Comparative survival of dialysis patients in the United States after coronary angioplasty, coronary artery stenting, and coronary artery bypass surgery and impact of diabetes. *Circulation*. 2002;106(17):2207-2211. doi:10.1161/01.cir.0000035248.71165.eb

25. Parikh DS, Swaminathan M, Archer LE, et al. Perioperative outcomes among patients with end-stage renal disease following coronary artery bypass surgery in the USA. *Nephrol Dial Transplant*. 2010;25(7):2275-2283. doi:10.1093/ndt/gfp781
26. Kumada Y, Ishii H, Aoyama T, et al. Long-term clinical outcome after surgical or percutaneous coronary revascularization in hemodialysis patients. *Circ J*. 2014;78(4):986-992. doi:10.1253/circj.cj-13-1357
27. Goodkin DA, Bragg-Gresham JL, Koenig KG, et al. Association of comorbid conditions and mortality in hemodialysis patients in Europe, Japan, and the United States: the Dialysis Outcomes and Practice Patterns Study (DOPPS). *J Am Soc Nephrol*. 2003;14(12):3270-3277. doi:10.1097/01.asn.0000100127.54107.57
28. Robinson BM, Zhang J, Morgenstern H, et al. Worldwide, mortality risk is high soon after initiation of hemodialysis. *Kidney Int*. 2014;85(1):158-165. doi:10.1038/ki.2013.252
29. Robinson BM, Akizawa T, Jager KJ, Kerr PG, Saran R, Pisoni RL. Factors affecting outcomes in patients reaching end-stage kidney disease worldwide: differences in access to renal replacement therapy, modality use, and haemodialysis practices. *Lancet*. 2016;388(10041):294-306. doi:10.1016/s0140-6736(16)30448-2
30. Taiwan Ministry of Health and Welfare. 2014 Annual Report on Kidney Disease in Taiwan.
31. Anand SS, Yusuf S, Vuksan V, et al. Differences in risk factors, atherosclerosis, and cardiovascular disease between ethnic groups in Canada: the Study of Health Assessment and Risk in Ethnic groups (SHARE). *Lancet*. 2000;356(9226):279-284. doi:10.1016/s0140-6736(00)02502-2
32. Khan NA, Grubisic M, Hemmelgarn B, Humphries K, King KM, Quan H. Outcomes after acute myocardial infarction in South Asian, Chinese, and white patients. *Circulation*. 2010;122(16):1570-1577. doi:10.1161/circulationaha.109.850297
33. Gasevic D, Khan NA, Qian H, et al. Outcomes following percutaneous coronary intervention and coronary artery bypass grafting surgery in Chinese, South Asian and White patients with acute myocardial infarction: administrative data analysis. *BMC Cardiovasc Disord*. 2013;13:121. doi:10.1186/1471-2261-13-121

34. Taiwan Ministry of Health and Welfare. <https://www.mohw.gov.tw/np-126-2.html>, assessed December 25, 2021.
35. Organization for Economic Co-operation and Development. <https://stats.oecd.org/>, assessed on December 25, 2021.
36. The World Bank. <https://data.worldbank.org/indicator/EN.POP.DNST>, assessed December 25, 2021.
37. Taiwan National Statistics. <https://eng.stat.gov.tw/mp.asp?mp=5>, assessed December 25, 2021.
38. Nallamotheu BK, Saint S, Ramsey SD, Hofer TP, Vijan S, Eagle KA. The role of hospital volume in coronary artery bypass grafting: is more always better? *J Am Coll Cardiol*. 2001;38(7):1923-1930. doi:10.1016/s0735-1097(01)01647-3
39. Loop FD, Lytle BW, Cosgrove DM, et al. Influence of the internal-mammary-artery graft on 10-year survival and other cardiac events. *N Engl J Med*. 1986;314(1):1-6. doi:10.1056/nejm198601023140101
40. Gaudino M, Benedetto U, Fremes S, et al. Association of Radial Artery Graft vs Saphenous Vein Graft With Long-term Cardiovascular Outcomes Among Patients Undergoing Coronary Artery Bypass Grafting: A Systematic Review and Meta-analysis. *JAMA*. 2020;324(2):179-187. doi:10.1001/jama.2020.8228
41. Moses JW, Leon MB, Popma JJ, et al. Sirolimus-eluting stents versus standard stents in patients with stenosis in a native coronary artery. *N Engl J Med*. 2003;349(14):1315-1323. doi:10.1056/NEJMoa035071
42. Morice MC, Serruys PW, Sousa JE, et al. A randomized comparison of a sirolimus-eluting stent with a standard stent for coronary revascularization. *N Engl J Med*. 2002;346(23):1773-1780. doi:10.1056/NEJMoa012843
43. Bønaa KH, Mannsverk J, Wiseth R, et al. Drug-Eluting or Bare-Metal Stents for Coronary Artery Disease. *N Engl J Med*. 2016;375(13):1242-1252. doi:10.1056/NEJMoa1607991

## Figure Legends

### Figure 1. Kaplan-Meier plot for survival in the matched cohort

The Kaplan-Meier plot of survival probabilities in the matched CABG (red line) and PCI with DES (blue line) groups during the study period. In the CABG group, the survival probabilities at 1, 2, 3, 4, and 5 years were 74.0%, 65.1%, 55.3%, 46.3%, and 38.7%, respectively. In the PCI with DES group, the survival probabilities at 1, 2, 3, 4, and 5 years were 81.2%, 70.6%, 60.5%, 50.2%, and 41.9%, respectively. Three patients in the CABG group and one patient in the PCI with DES group died within 1 day after revascularization.  $p < 0.01$  by logrank test.

Abbreviation: CABG, coronary artery bypass graft; DES, drug-eluting stent; PCI, percutaneous coronary intervention

### Figure 2. Subgroup analysis of overall survival in the matched cohort

The adjusted HRs for overall survival in the multivariable Cox proportional hazard model according to pre-specified subgroups were shown. In each subgroup, the percentage of patients from CABG ( $n = 920$ ) and PCI with DES ( $n = 920$ ) groups were specified. Significant heterogeneity of effect was identified according to the existence of prior CAD and the frequency of prior OPD visits.

Abbreviation: CAD, coronary artery disease; CCI, Charlson comorbidity index; CHF, congestive heart failure; CI, confidence interval; DM, diabetes mellitus; HD, hemodialysis; HR, hazard ratio; NSTEMI, non-ST elevation myocardial infarction; OPD, outpatient department; PD, peritoneal dialysis; UA, unstable angina

## Tables

**Table 1. Baseline characteristics of the ESKD patients receiving CABG or PCI with DES in the full and the PSM cohorts**

	Full cohort			PSM cohort		
	CABG	PCI with DES <sup>a</sup>	STD	CABG	PCI with DES <sup>a</sup>	STD
No.	1,023	3,142		920	920	
Age, mean (SD), year	61.2 (9.4)	64.5 (9.3)	0.35	61.7 (9.3)	62.2 (9.8)	0.05
Male sex	707 (69.1)	1,900 (60.5)	0.18	621 (67.5)	628 (68.3)	0.02
Vessels treated <sup>b</sup>						
1	127 (12.4)	1,850 (58.9)	1.11	127 (13.8)	125 (13.6)	0.01
≥ 2	896 (87.6)	1,292 (41.1)	1.11	793 (86.2)	795 (86.4)	0.01
Comorbidity (%) <sup>c</sup>						
Prior CAD	752 (73.5)	1,784 (56.8)	0.36	655 (71.2)	629 (68.4)	0.06
Heart failure	278 (27.2)	714 (22.7)	0.10	238 (25.9)	236 (25.7)	0.01
Peripheral artery disease	36 (3.5)	122 (3.9)	0.02	35 (3.8)	34 (3.7)	0.01
Stroke	147 (14.4)	401 (12.8)	0.05	129 (14.0)	122 (13.3)	0.02
Diabetes mellitus	546 (53.4)	1,750 (55.7)	0.05	506 (55.0)	502 (54.6)	0.01
Hypertension	808 (79.0)	2,434 (77.5)	0.04	716 (77.8)	715 (77.7)	<0.01
Dyslipidemia	330 (32.3)	828 (26.4)	0.13	281 (30.5)	265 (28.8)	0.04
Cancer	34 (3.3)	173 (5.5)	0.11	32 (3.5)	38 (4.1)	0.03
Cirrhosis	23 (2.3)	63 (2.0)	0.02	20 (2.2)	18 (2.0)	0.02
Medication <sup>d</sup>						
Antiplatelet	571 (55.8)	1,700 (54.1)	0.03	511 (55.5)	523 (56.9)	0.03
β-blocker	438 (42.8)	1,288 (41.0)	0.04	388 (42.2)	390 (42.4)	<0.01
RAAS blockade	314 (30.7)	1,026 (32.7)	0.04	289 (31.4)	288 (31.3)	<0.01
Statin	271 (26.5)	811 (25.8)	0.02	245 (26.6)	237 (25.8)	0.02
Oral antidiabetic drug	351 (34.3)	1,062 (33.8)	0.01	327 (35.5)	330 (35.9)	0.01
Insulin	281 (27.5)	1,017 (32.4)	0.11	260 (28.3)	258 (28.0)	<0.01
Dialysis vintage, mean (SD), year	5.1 (4.6)	4.9 (4.5)	0.06	5.1 (4.6)	5.0 (4.6)	0.03
Frailty <sup>e</sup>						
Outpatient department visit, mean (SD)	27.9 (13.9)	29.6 (14.0)	0.12	28.0 (14.2)	28.3 (13.4)	0.02
Hospitalization duration, mean (SD), day	7.6 (13.0)	6.0 (13.1)	0.12	7.2 (11.8)	7.0 (15.6)	0.02
Charlson comorbidity index, mean (SD) <sup>c</sup>	4.8 (1.8)	4.6 (1.8)	0.07	4.7 (1.7)	4.7 (1.8)	0.03
NSTEMI or UA <sup>f</sup>	314 (30.7)	1,357 (43.2)	0.26	295 (32.1)	319 (34.7)	0.05

**Table 1. Baseline characteristics of the ESKD patients receiving CABG or PCI with DES in the full and the PSM cohorts (continued)**

	Full cohort			PSM cohort		
	CABG	PCI with DES <sup>a</sup>	STD	CABG	PCI with DES <sup>a</sup>	STD
Clinical condition <sup>g</sup>						
Cardiopulmonary resuscitation	6 (0.6)	14 (0.5)	0.02	6 (0.7)	6 (0.7)	0.02
Cardiogenic shock	26 (2.5)	9 (0.3)	0.19	10 (1.1)	9 (1.0)	0.01
Respiratory failure or unstable hemodynamics	154 (15.1)	199 (6.3)	0.29	111 (12.1)	98 (10.7)	0.05
Stable	837 (81.8)	2,920 (92.9)	0.34	793 (86.2)	808 (87.8)	0.05
Hospital volume <sup>h</sup>						
≥ 200	197 (19.3)	289 (9.2)	0.29	151 (16.4)	125 (13.6)	0.08
100-199	254 (24.8)	483 (15.4)	0.24	219 (23.8)	204 (22.2)	0.04
50-99	294 (28.7)	1,187 (37.8)	0.19	280 (30.4)	298 (32.4)	0.04
≤ 49	278 (27.2)	1,183 (37.7)	0.23	270 (29.4)	293 (31.9)	0.05
Hospital type						
Medical center	713 (69.7)	1,921 (61.1)	0.18	624 (67.8)	601 (65.3)	0.05
Regional hospital	310 (30.3)	1,221 (38.9)	0.18	296 (32.2)	319 (34.7)	0.05

<sup>a</sup>DES was identified by codes listed in eTable 7 in the **Supplement**. <sup>b</sup>Number of the coronary arteries treated during the index revascularization. <sup>c</sup>Cormorbidity was defined by the presence of the diagnosis codes for at least 1 inpatient (including the index hospitalization) or 3 outpatient encounters within 1 year before the index date. Diagnosis codes selected to define comorbidities were listed in eTable 6 in the **Supplement**. <sup>d</sup>The medications investigated were listed in eTable 8 in the **Supplement**. The use of medication was defined as a medication possession ratio  $\geq 50\%$ . <sup>e</sup>The sum of outpatient department visits and the total duration of hospitalization days within 6 months before the index date were calculated. <sup>f</sup>The development of NSTEMI or UA during the index hospitalization according to codes in eTable 6 in the **Supplement**. <sup>g</sup>The clinical condition within 24 hours before revascularization was defined by the procedure codes or medications listed in eTable 9 in the **Supplement**. <sup>h</sup>The total number of CABG performed within one year in the hospital.

Abbreviation: CABG, coronary artery bypass graft; CAD, coronary artery disease; DES, drug-eluting stent; No., number; NSTEMI, non-ST segment elevation myocardial infarction; PCI, percutaneous coronary intervention; PSM, propensity score matching; RAAS, renin-angiotensin-aldosterone system; SD, standard deviation; STD, standardized difference; UA, unstable angina



**Table 2. Comparison of mortality risks between the 2 treatment groups**

	<b>OR or HR</b>	<b>95% CI</b>	<b>p value</b>
In-hospital mortality	5.22	3.42-7.97	<0.001
1-year mortality	1.54	1.26-1.87	<0.001
2-year mortality	1.31	1.11-1.54	<0.01
3-year mortality	1.24	1.08-1.44	<0.01
4-year mortality	1.20	1.05-1.37	<0.01
5-year mortality	1.18	1.04-1.34	0.01
Overall mortality	1.19	1.05-1.35	<0.01

The adjusted OR for in-hospital mortality was estimated by the multivariable logistic regression.

The adjusted HRs for 1-, 2-, 3-, 4-, and 5-year mortality rates, and overall mortality were estimated by the multivariable Cox proportional hazard model. PCI with DES was set as the reference group.

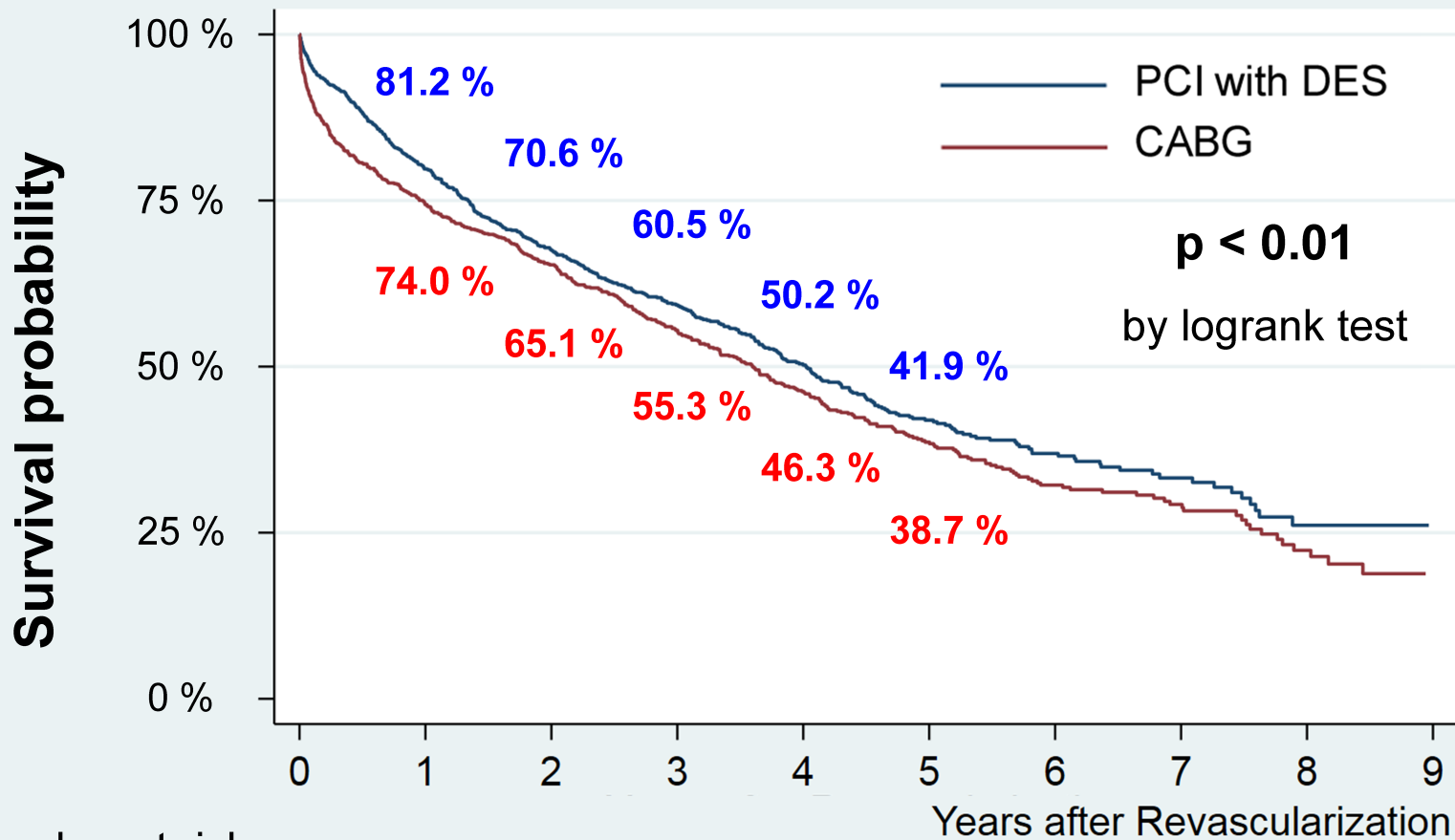
Abbreviation: HR, hazard ratio; OR, odds ratio

**Table 3. Comparison of overall mortality in the sensitivity analyses**

	No.	HR	95% CI	P value
<b>Original model</b>	1,840	1.19	1.05-1.35	<0.01
<b>Additional models</b>				
<b>Patient samples<sup>a</sup></b>				
Full cohort	4,165	1.16	1.04-1.29	<0.01
excluding deaths within 3 days <sup>b</sup>	1,038	1.08	0.95-1.22	0.24
excluding ACS cases <sup>c</sup>	1,184	1.12	0.96-1.31	0.14
excluding cases with unstable clinical condition <sup>d</sup>	1,590	1.20	1.05-1.37	<0.01
excluding cases with only one vessel treated <sup>e</sup>	1,484	1.13	0.99-1.30	0.08
excluding deaths before discharge <sup>f</sup>	1,604	1.02	0.89-1.17	0.74
<b>Interval Cox model<sup>g</sup></b>				
0-2 year	1,840	1.32	1.12-1.55	0.001
2-4 year	1,246	1.00	0.79-1.26	0.98
4-6 year	955	1.13	0.79-1.60	0.51
6-9 year	831	1.12	0.58-2.16	0.74
<b>Composite outcome measures</b>				
Death, ACS, or repeat revascularization	1,840	0.76	0.68-0.84	<0.001
Death or ACS	1,840	0.99	0.88-1.10	0.82
Death or repeat revascularization	1,840	0.73	0.66-0.81	<0.001

<sup>a</sup>Separate propensity score matching (1:1) was performed on the included patients each time after modification of the selection criteria. <sup>b</sup>Patients passing away within 3 days after the index date were excluded. <sup>c,d,e</sup>Patients who had ACS, unstable clinical condition, or only one coronary artery treated (as defined in **Table 1**) during the index hospitalization were excluded. <sup>f</sup>Patients passing away during the index hospitalization were excluded. In this sensitivity analysis, the date of discharge from index hospitalization (instead of the date of revascularization) was set as day 0

of the Cox survival analysis. The proportional hazard assumption was valid in this Cox model (global test,  $p = 0.95$ ).<sup>8</sup>The time-varying HRs in different time periods were estimated in the interval Cox model. The number of patients ( $n$ ) who remained alive at the start of the time period was also shown. The proportional hazard assumption was valid in each time period (Schoenfeld residual test,  $p = 0.28, 0.90, 0.68, \text{ and } 0.47$  in the 0-2 year, 2-4 year, 4-6 year, and 6-9 year period, respectively).



Number at risk

<b>PCI with DES</b>	919	733	621	419	279	170	97	50	17	0
<b>CABG</b>	917	682	599	414	278	170	98	61	24	0

