

1 **Title page**

2

3 **Title**

4 Impact of intensive care-related factors on outcome in stroke patients, results from the
5 population-based Brest Stroke Registry: an observational study.

6

7 **Short title**

8 Impact of intensive care-related factors on outcome in stroke patients.

9

10 **Authors names and affiliations**

11 Philippe Ariès^{1,2}, Pierre Bailly³, Thibaut Baudic⁴, Fanny Le Garrec⁵, Maëlys Consigny⁶, Erwan
12 L'Her³, Serge Timsit⁷, Olivier Huet^{1*} on behalf of the Brest Stroke Registry collaborators[^]

13

14 1 Department of Anesthesiology and Intensive Care Medicine, Brest University Hospital, Brest
15 Cedex, France.

16 2 Intensive Care Unit, Military Teaching Hospital Clermont Tonnerre, Brest, France.

17 3 Médecine Intensive et Réanimation, CHRU de La Cavale Blanche, Brest, France.

18 4 Centre de traitement des brûlés, Hôpital d'Instruction des Armées Percy, Clamart, France.

19 5 Department of Anesthesiology and Intensive Care Medicine, Hôpital Fondation Adolphe de
20 Rothschild. Paris, France.

21 6 Centre d'Investigation Clinique CIC INSERM 1412, CHRU Brest - La Cavale Blanche, Brest,
22 France.

23 7 Brest University Hospital, Inserm, EFS, UMR 1078, GGB, Neurology and Stroke unit
24 Department, CHRU de Brest, Inserm 1078, France.

25

26

27 ***Corresponding author**

28 E-mail : Olivier.huet9@orange.fr (OH)

29

30 [^]Membership of the Brest Stroke Registry is provided in the Acknowledgments.

31 **Abstract**

32 **Background**

33 Little is known on the burden of ICU care for stroke patients. The aim of this study was to
34 provide a description of management strategies, resource use, complications and their
35 association with prognosis of stroke patients admitted to ICU.

36 **Methods**

37 Using a population-based stroke registry, we analyzed consecutive stroke patients admitted
38 to 3 ICU with at least one organ failure between 2008 and 2017. The study period was divided
39 into two periods corresponding to the arrival of mechanical reperfusion technique.

40 Predictors of ICU mortality were separately assessed in two multivariable logistic regression
41 models, a “clinical model” and an “intervention model”. The same analysis was performed for
42 predictors of functional status at hospital discharge.

43 **Results**

44 215 patients were included. Stroke etiology was ischemia in 109 patients (50.7%) and
45 hemorrhage in 106 patients (49.3%). Median NIHSS score was 20.0 (9.0; 40.0). The most
46 common reason for ICU admission was coma (41.2%) followed by acute circulatory failure
47 (41%) and respiratory failure (27.4%). 112 patients (52%) died in the ICU and 20 patients
48 (11.2%) had a good functional outcome ($mRS \leq 3$) at hospital discharge.

49 In the “clinical model,” factors independently associated with ICU mortality were: age (OR =
50 1.03 [95%CI, 1.0 to 1.06]; $p=0.04$) and intracranial hypertension (OR = 6.89 [95%CI, 3.55 to
51 13.38]; $p<0.0001$). In the “intervention model,” the need for invasive mechanical ventilation
52 (OR = 7.39 [95%CI, 1.93 to 28.23]; $p=0.004$), the need for vasopressor therapy (OR = 3.36
53 [95%CI, 1.5 to 7.53]; $p=0.003$) and decision of withholding life support treatments (OR = 19.24
54 [95%CI, 7.6 to 48.65]; $p<0.0001$) were associated with bad outcome.

55 **Conclusion**

56 Our study showed the very poor prognosis of acute stroke patients admitted to ICU. These
57 results also suggest that the clinical evolution of these patients during ICU hospitalization may
58 provide important information for prognostication.

60 **Background**

61
62 Prognosis of stroke patients admitted into the intensive care unit (ICU) remains very poor
63 despite stroke unit's care and recent advances in acute reperfusion treatment for ischemic
64 strokes (1). The reported short-term mortality rate for stroke patients requiring ICU
65 management ranged from 40 to 70% (2–6) and the likelihood of survival without disabilities
66 was very low in a recent study, since only a fifth of patients had a good neurological outcome
67 at 6 months after stroke (2).

68 For these reasons, a time-limited-trial (TLT) of intensive care treatment-i.e., agreement
69 between physicians and family to use certain medical therapies over a defined period (7)- may
70 be proposed (8). Yet, despite TLT, decision of invasive therapy and treatment of complications
71 might be considered as futile by the care-team and could lead to a self-fulfilling prophecy in
72 patients who could have, if treated aggressively, a reasonable outcome (9). Therefore, ICU
73 management plays a key role in the prognosis of critically ill stroke patients but little is known
74 about how intensive care-related factors may impact prognosis contrary to pre-hospital
75 anamnesis (8,10–12).

76
77 The need for mechanical ventilation is associated with poor outcomes but data concerning
78 other life-supporting interventions such as the need of vasopressor support or renal
79 replacement therapy are scarce (5). Moreover, the impact of stroke-related complications
80 such as intracranial hypertension, status epilepticus and neurosurgery on ICU stroke patients'
81 outcomes remains poorly investigated.

82 In addition, the negative effect of systemic secondary brain insults (SBIs) : hypoxaemia,
83 hypercapnia, hypotension, fever, anemia, hyperglycemia and abnormal blood sodium levels,
84 on cerebral blood flow, as well as oxygen and glucose supply have been less well characterized

85 in critically ill stroke patients contrary to other acute brain injuries such as traumatic brain
86 injury (13,14).

87

88 Thus, the primary objective of this study was to determine critical care-related factors
89 associated with ICU mortality in patients enrolled in the French Brest Stroke Registry (BSR), a
90 stroke population-based registry set up in 2008 in western France, an area that includes about
91 336 000 individuals (15–17). We also aimed to determine factors associated with functional
92 outcome at hospital discharge.

93

94 **Methods**

95 **Study population**

96 Our study concerned all strokes from the BSR which occurred between January 2008 and
97 December 2017. All cases of stroke in patients aged above 15 years occurring in a defined area
98 known as the “Pays de Brest”, in Brittany, western France, were recorded in the BSR. The total
99 population (above 15 years) of this area was 365 564 at the 2009 census. Data collection was
100 performed prospectively and retrospectively (“hot and cold pursuit”). Multiple information
101 sources were used: emergency wards, brain imaging records, neurologists and general
102 practitioners, death certificates and hospital database. The World Health Organization (WHO)
103 criteria (18) were used to make the clinical diagnosis of stroke, confirmed by brain CT or MRI.
104 Stroke was defined as a new focal neurological deficit with symptoms and signs persisting for
105 more than 24 hours (patients who died within the first 24 hours were also included), or a focal
106 neurological deficit lasting at least one hour, or resolving in less than one hour but presenting
107 with brain imaging (CT or MRI) suggestive of stroke.

108 **Criteria of inclusion**

109 All patients admitted in the ICU with a diagnosis of ischemic or hemorrhagic stroke and
110 registered in the BSR with at least one organ failure among circulatory failure, respiratory
111 failure and neurological failure were included.

112 Acute circulatory failure was defined as a persistent hypotension (mean arterial pressure
113 (MAP) below 65 mmHg) requiring vasopressors or inotropes associated or not with
114 hyperlactatemia (> 2mmol/l), respiratory failure as the need for high flow nasal cannula
115 oxygen therapy (HFNC) and/or non-invasive ventilation (NIV) and/or IMV for respiratory
116 reasons, and neurological failure as coma i.e., a Glasgow Coma Scale (GCS) of 7 or less.

117 Patients could be hospitalized in one of the three ICUs (one neurosurgical, two general ICUs)
118 of the corresponding geographic area of the BSR. We excluded patients without
119 hospitalization reports or in case of patient's refusal to participate.

120 **Ethics & specific authorizations**

121 BSR is accredited by the French National Agency of Health surveillance (Santé Publique France)
122 and complies with the French regulation on patient's consent, ethics, and data confidentiality.
123 Specific authorizations were obtained from the national "Comité consultatif sur le traitement
124 de l'information en matière de recherche" under the reference CCTIRS MG/CP°07.693 and
125 from the "Commission Nationale Informatique et Liberté" (CNIL) under the agreement N°
126 908085. The local ethic committee also approved the registry.

127 The study protocol was submitted to the Institutional Review Board of the Brest University
128 Hospital (B2020CE.17) and was registered on ClinicalTrials.gov public website (NCT04434287).
129 Patients or relatives were individually informed by postal mail and had the opportunity to
130 decline participation, but no written informed consent was required, in line with the directives
131 of the Ethics Committee.

132 **Data collection**

133 Data prospectively collected in the BSR included risk factors of stroke and the initial clinical
134 examination (modified Rankin score (mRS) before stroke, National Institutes of Health Stroke
135 Scale (NIHSS) and GCS at hospital admission). Specific variables according to the type of stroke
136 were also collected, i.e., for ischemic strokes: the trial of ORG 10172 in acute stroke treatment
137 (TOAST) classification, the Oxfordshire Community Stroke Project (OSCP) classification,
138 radiological findings (stroke localization) and management specificities (thrombolysis,
139 thrombectomy for e.g.); for hemorrhagic strokes: specific etiologies and radiological findings
140 (stroke localization, imaging progression) (19–21).

141 We also retrospectively collected specific data related to the ICU hospitalization:

- 142 - Data from admission: the Simplified Acute Physiology Score II (SAPS II), the type of
143 organ failure and the presence of aspiration pneumonia was also collected;
- 144 - Systemic secondary brain insults (SBIs) during the first 24 hours: hypoxemia (oxygen
145 saturation (SatO₂) <92% or partial arterial pressure of oxygen (PaO₂) <8 kPa without
146 oxygen-therapy or mechanical ventilation with FIO₂ > 30% for respiratory reason),
147 hypercapnia (partial pressure of carbon dioxide (PaCO₂) > 6 kPa), hypotension (systolic
148 blood pressure (SBP) below 90 mmHg and/or use of vasopressors and/or inotropes to
149 maintain SBP above 90 mmHg), hyperglycemia (glucose ≥ 8 mmol/l without insulin
150 therapy), hyperthermia (temperature ≥ 38° Celsius), anemia (serum hemoglobin <
151 10g/dl before transfusion), hyponatremia (natremia <135 mmol/l), hypernatremia
152 (natremia >155 mmol/l). The physiologic values were measured every 4 hours in the
153 ICU. Blood samples were usually performed every morning. One deviation during the
154 24 hours was sufficient to be recorded;
- 155 - Stroke-related complications during the ICU stay: intracranial hypertension (ICH)
156 defined either by intracranial pressure (ICP) above 20 mmHg during more than 30
157 minutes in case of ICP monitoring, or by an abnormal trans-cranial doppler (TCD)
158 measures i.e., pulsatility index above 1.4 or diastolic flow velocity under 20 cm.s⁻¹
159 without hypocapnia, or clinically by unilateral or bilateral mydriasis requiring medical
160 or surgical intervention (such as sedation, osmotherapy or neurosurgical intervention),
161 status epilepticus and neurosurgery (i.e., craniectomy, hematoma evacuation,
162 external ventricular drain);
- 163 - Organ support during the ICU stay: need for IMV, and/or for NIV and/or for HFNC
164 oxygen; the use of vasopressor support (i.e., noradrenalin, adrenalin or dobutamine)

165 or for antihypertensive therapy and/or for renal replacement therapy (RRT). For
166 ventilated patients, the indication for IMV was also assessed;

167 - Other complications during the ICU stay: Ventilator Acquired Pneumonia (VAP) were
168 defined as a pneumonia occurring >48 hours after endotracheal intubation with clinical
169 and radiological signs associated with bacterial documentation. Early-onset and late-
170 onset VAP were respectively defined as VAP occurring between day 2 and 6 and after
171 day 7 of ICU admission (22). Radiological proven deep venous thrombosis or
172 pulmonary embolism, duration of invasive ventilation, ICU length of stay, withholding
173 and withdrawal of life-sustaining treatments (LST) were also collected;

174 - Specific monitoring: invasive intracranial pressure (ICP) monitoring, TCD, and cardiac
175 output (CO) monitoring (invasive or not monitoring).

176 **Outcomes**

177 We assessed the ICU mortality, the primary outcome, and the functional status (mRS) at
178 hospital discharge. According to previous studies, we defined a good hospital discharge
179 functional outcome as a mRS score of 0 to 3 (0, no disability; 1, no significant disability; 2,
180 slight disability; and 3, moderate disability) (4,12) and bad outcome (mRS >3).

181 In order to analyze temporal trends in these outcomes, we divided the study period into two
182 periods: 2008-2013 and 2014-2017 corresponding to the arrival of endovascular mechanical
183 reperfusion technique in Brest University Hospital, which may have an impact on outcomes.

184

185 **Statistical Analysis**

186

187 Characteristics of patients were described as frequencies and percentages for categorical
188 variables, as means and standard deviations (SD) or medians and interquartile ranges (IQR)
189 for continuous variables. Categorical variables were analyzed by chi-square test or Fisher's

190 exact test and continuous variables were compared by Student's t test or by Wilcoxon rank
191 test according to their distribution.

192 We built two different models for each outcome, a “clinical model” with demographic, clinical
193 examination, biological and radiological variables and a “intervention model” including organ
194 supports and withholding or withdrawal of LST.

195 Considering the rule that predictive logistic models should be used with a minimum of 10
196 outcome events per predictor variable, we estimated that a number of 200 included patients
197 would be sufficient to propose logistic regression models with 5 variables as mortality for ICU
198 stroke patients was estimated to be 40% (11). The initial neurologic gravity (NIHSS and GCS
199 score) and decision of withholding LST were considered as important factors and were forced
200 respectively in the clinical and the intervention model to be tested.

201 The set of variables associated with ICU survival and good functional prognosis in univariate
202 analysis ($p < 0.05$) were included in a multivariate regression models and backward stepwise
203 selection was applied. The variance inflation factor (VIF) was applied to detect the presence
204 of collinearity between independent variables of multivariable models. No variable included
205 in models had missing data greater than 10% therefore we did not perform imputation and all
206 available data have been analyzed.

207 Tests were two-sided and values of p less than 0.05 were considered statistically significant.

208 Statistical analysis was performed with SAS 9.4 (SAS Institute Inc., Cary, NC, USA).

209
210
211

212 **Results**

213

214 **Patients enrolled**

215

216 Out of 8910 patients included in the Brest Stroke Registry during the study period, 338

217 patients were hospitalized in ICU and 215 were finally enrolled (**Figure 1**).

218

219 **Fig.1 Flowchart**

220 *ICU: Intensive Care Unit*

221

222 One hundred and twenty-eight patients were enrolled from 2008 to 2013 and 87 from 2014

223 to 2017. Ischemic stroke was diagnosed in 109/215 (50.7 %) patients and ICH occurred in

224 106/215 (49.3 %) patients. Patients were predominantly males (61.4%), median age was 66.0

225 (57.0-76.0) years, median SAPS II score was 55.0 (43.0-67.0) and median NIHSS was 20.0 (9.0-

226 40.0). The most frequent organ failure at admission was coma (41.2%), followed by acute

227 circulatory failure (41%) and respiratory failure (27.4%). One hundred and twelve (52%)

228 patients died in ICU and median mRS at hospital discharge was 4.0 (3.0-6.0).

229 Only 20 patients (11.2%) had a good functional outcome ($mRS \leq 3$) (**Figure 2**).

230

231 **Fig.2 Modified Rankin Scale at Hospital discharge**

232 *mRS: modified Rankin Scale*

233

234

235 **Univariate and multivariable analysis for ICU mortality**

236 In univariate analysis, admission factors associated with ICU-mortality were age, SAPS II,

237 NIHSS, GCS score, TOAST and OCSP classifications (**Table 1**).

238

239

240

241

242

243 **Table 1 Admission characteristics and their univariate association with ICU mortality**
 244

Variables N (%) or median [Q1; Q3]	ICU mortality		p
	Alive N=103	Dead N=112	
Demographics and neurological status			
Sex—no.(%)			0.44
<i>Female</i>	37 (35.9%)	46 (41.1%)	
<i>Male</i>	66 (64.1%)	66 (58.9%)	
Age, years	63.0 (55.0;75.0)	68.0 (61.0;76.5)	0.02
Diabetes mellitus	9 (8.7%)	16 (14.3%)	0.20
Hypertension	53 (51.5%)	52 (46.4%)	0.46
SAPS II	48.5 (35.0;62.0)	59.5 (52.0;71.0)	<0.0001
Period of admission			1.00
2008-2013	12 (11.2%)	95 (88.8%)	
2014-2017	8 (11.3%)	63 (88.7%)	
Stroke type			0.95
<i>Ischemic</i>	52 (50.5%)	57 (50.9%)	
<i>Hemorrhagic</i>	51 (49.5%)	55 (49.1%)	
mRS before stroke	0.0 (0.0;1.0)	0.0 (0.0;1.0)	0.98
GCS score at admission	11.0 (6.0;15.0)	8.0 (4.0;14.0)	0.01
NIHSS	15.0 (6.0;39.0)	25.0 (12.0;40.0)	0.02
Ischemic stroke characteristics			
TOAST classification			0.04
<i>Large Artery Atherosclerosis^a</i>	5 (9.6%)	3 (5.3%)	
<i>Cardio embolism^b</i>	15 (28.8%)	12 (21.1%)	
<i>Stroke Of Other Determined Etiology</i>	9 (17.3%)	5 (8.8%)	
<i>Undetermined Etiology (Negative Assessment)</i>	7 (13.5%)	3 (5.3%)	
<i>Undetermined Etiology (Incomplete Assessment)</i>	16 (30.8%)	34 (59.6%)	
OCSF classification			0.007
<i>Total Anterior Circulation Infarction</i>	6 (11.8%)	21 (38.2%)	
<i>Partial Anterior Circulation Infarction</i>	23 (45.1%)	18 (32.7%)	
<i>Lacunar Infarction</i>	2 (3.9%)	0 (0.0%)	
<i>Posterior Circulation Infarction</i>	20 (39.2%)	16 (29.1%)	
Thrombolysis	3 (5.8%)	7 (12.3%)	0.32
Thrombectomy	4 (7.7%)	7 (12.3%)	0.43
Hemorrhagic conversion	10 (19.2%)	16 (28.1%)	0.28
Hemorrhagic stroke characteristics			
Etiology			
<i>Hypertension</i>	26 (51.0%)	20 (36.4%)	0.13
<i>Antiplatelet/anticoagulant</i>	20 (39.2%)	25 (45.5%)	0.51
<i>Vasculitis</i>	5 (9.8%)	2 (3.6%)	0.26
Anticoagulant reversal	3 (5.9%)	6 (10.9%)	0.49
Localization and volume			0.73
<i>Supratentorial</i>	43 (84.3%)	45 (81.8%)	
<i>Infratentorial</i>	8 (15.7%)	10 (18.2%)	
Associated Cerebral venous thrombosis	2 (3.9%)	1 (1.8%)	0.60
Organ failure and complications at admission			
Coma ^c	34 (34.3%)	50 (47.6%)	0.05
Acute Circulatory failure ^d	34 (34.3%)	50 (47.2%)	0.06
Respiratory failure ^e	39 (37.9%)	20 (17.9%)	0.001

Aspiration pneumonia 36 (35.3%) 37 (33.3%) 0.76

245 *GCS: Glasgow Coma Scale; ICH: Intracerebral Hemorrhage; ICU: Intensive Care Unit; mRS: modified Rankin Scale;*
 246 *NIHSS: National Institutes of Health Stroke Scale; SAPS: Simplified Acute Physiology score; TOAST: Trial of Org*
 247 *10172 in Acute Stroke Treatment; OSCP: Oxfordshire Community Stroke Project.*

248 ^a Embolus/thrombosis; ^b High-Risk/Medium-Risk; ^c Glasgow Coma Scale ≤ 8 ; ^d persistent hypotension requiring
 249 vasopressors or inotropes or associated to hyperlactatemia ($> 2\text{mmol/l}$); ^e need of non-invasive, high flow oxygen
 250 therapy or invasive mechanical ventilation for respiratory reasons.

251
 252
 253
 254

255 Among critical care-related factors, respiratory failure, invasive mechanical ventilation,
 256 vasopressor use and the occurrence of intracranial hypertension were associated with ICU
 257 mortality. During the ICU stay, hyperglycemia and hypernatremia were the only systemic SBIs
 258 associated with mortality. ICU length of stay was significantly longer in the survivor group
 259 compared to those who died in ICU (8 days (4.0;20.0) vs 3 days (2.0;6.0), $p < 0.001$) (**Table 2**).

260
 261

Table 2 Critical care-related factors and their univariate association with ICU mortality

Variables N (%) or median [Q1; Q3]	ICU mortality		p
	Alive N=103	Dead N=112	
Systemic secondary brain insults during the first 24 hours			
Hypoxemia ^a	33 (34.4%)	30 (28.8%)	0.40
Hypercapnia ^b	29 (30.9%)	40 (40.4%)	0.17
Hypotension ^c	34 (34.3%)	50 (47.2%)	0.06
Hyperglycemia ^d	19 (20.4%)	35 (35.0%)	0.02
Hyperthermia ^e	47 (46.1%)	36 (34.3%)	0.08
Anemia ^f	26 (27.1%)	18 (16.7%)	0.07
Hyponatremia ^g	34 (34.3%)	23 (21.7%)	0.04
Hypernatremia ^h	2 (2.0%)	15 (14.2%)	0.0016
Complications during ICU stay			
Intracranial hypertension	21 (20.4%)	73 (65.8%)	<0.0001
Status epilepticus	23 (22.3%)	7 (6.4%)	0.0008
Neurosurgery ⁱ	32 (31.1%)	21 (18.9%)	0.04
Imaging progression ^j	10 (20.8%)	14 (53.8%)	0.004
VAP	16 (15.7%)	11 (9.9%)	0.21
Timing of VAP			0.82
<i>Early onset pneumonia</i>	8 (50.0%)	6 (54.5%)	
<i>Late onset pneumonia</i>	8 (50.0%)	5 (45.5%)	
Thrombosis ^k	8 (7.8%)	5 (4.5%)	0.32
Organ support during ICU stay			

Invasive mechanical ventilation	69 (67.0%)	107 (95.5%)	<0.0001
Reasons for mechanical ventilation			0.91
<i>Coma</i>	54 (79.4%)	90 (84.1%)	
<i>Respiratory failure</i>	12 (17.6%)	14 (13%)	
<i>Elective procedure</i>	2 (2.9%)	3 (2.8%)	
Oxygen trough NIV or High flow nasal cannula	31 (30.4%)	8 (7.2%)	<0.0001
Use of vasopressors	43 (42.6%)	78 (70.9%)	<0.0001
Use of antihypertensive treatments	54 (52.9%)	27 (25.2%)	<0.0001
Use of renal replacement therapy	5 (4.9%)	8 (7.3%)	0.46
Specific monitoring			
Cardiac monitoring	23 (22.3%)	30 (26.8%)	0.45
TCD monitoring ^l	32 (31%)	25 (22%)	0.32
Invasive ICP monitoring	6 (5%)	5 (4%)	0.51
Outcomes			
Duration of invasive ventilation, days	4.0 (0.0;11.0)	3.0 (2.0;6.0)	0.99
GCS at discharge	15.0 (13.0;15.0)	3.0 (3.0;3.0)	<0.0001
mRS at discharge	4.0 (3.0;6.0)	6.0 (6.0;6.0)	<0.0001
ICU length of stay, days	8.0 (4.0;20.0)	3.0 (2.0;6.0)	<0.0001
Withholding LST	9 (8.7%)	70 (63.1%)	<0.0001
Withdrawal LST	3 (2.9%)	56 (50.5%)	<0.0001

262 GCS: Glasgow Coma Scale; ICP: Intracranial Pressure; ICU: Intensive Care Unit; LST: Life- Sustaining Treatment;
 263 mRS: modified Rankin Scale; NIV: Non-Invasive Ventilation; TCD: Transcranial doppler; VAP: Ventilation Acquired
 264 Pneumonia. ^a SatO₂ <92% or partial arterial pressure of oxygen (PaO₂) <8 or FIO₂ > 30% kPa; ^b PaCO₂ > 6 kPa; ^c
 265 vasopressors or inotropes to maintain MAP>60mmHg; ^d glucose≥8 mmol/l; ^e temperature ≥ 38° Celsius; ^f serum
 266 haemoglobin<10g/dl; ^g Na+<135 mmol/l; ^h Na+>155 mmol/l, ⁱ craniectomy, hematoma evacuation, external
 267 ventricular drain; ^j increase in hemorrhage volume from baseline CT scan; ^k proven venous thrombosis or
 268 pulmonary embolism; ^l At least one TCD measure during the ICU stay
 269

270

271 The multivariate analysis for ICU mortality is presented in **Table 3**. The clinical model showed
 272 that age and intracranial hypertension were independent clinical risk factors associated with
 273 ICU mortality. The intervention model showed that IMV, use of vasopressors and withholding
 274 of LST were independently associated with ICU mortality. In contrast, hyponatremia, status
 275 epilepticus and oxygen trough NIV or HFNC were the only variables associated with survival.

276

277

278 **Table 3 Multivariable Logistic Regression of clinical factors interventions associated with ICU**
 279 **mortality**
 280 **(A) Clinical model**
 281

Variable	Full model		Final model	
	OR [95%CI]	<i>p</i>	OR [95%CI]	<i>p</i>
Age	1.02 [0.99 ; 1.06]	0.22	1.03 [1.00 ; 1.06]	0.04
NIHSS score at admission	1.02 [0.98 ; 1.07]	0.34		
GCS score at admission	1.04 [0.89 ; 1.20]	0.65		
Hyperglycemia ^a	2.08 [0.78 ; 5.55]	0.14		
Hyponatremia ^b	0.45 [0.17 ; 1.18]	0.10	0.48 [0.23 ; 0.98]	0.04
Intracranial hypertension	5.94 [2.48 ; 14.21]	<0.0001	6.89 [3.55 ; 13.38]	<0.0001
Status epilepticus	0.22 [0.04 ; 1.28]	0.09	0.34 [0.13 ; 0.92]	0.03
Respiratory failure ^c	0.25 [0.08 ; 0.81]	0.02		

282
 283 **(B) Intervention model**
 284

Variable	Full model		Final model	
	OR [95%CI]	<i>p</i>	OR [95%CI]	<i>p</i>
Invasive mechanical ventilation	6.68 [1.79 ; 24.96]	0.005	7.39 [1.93 ; 28.23]	0.004
Use of vasopressors	3.49 [1.52 ; 8.01]	0.003	3.36 [1.50 ; 7.53]	0.003
Use of antihypertensive treatments	0.53 [0.23 ; 1.24]	0.16		
Oxygen trough NIV or High flow nasal cannula	0.25 [0.08 ; 0.82]	0.02	0.20 [0.06 ; 0.60]	0.004
Neurosurgery ^d	0.52 [0.20 ; 1.33]	0.17		
Withholding LST	20.01 [7.70 ; 52.03]	<0.0001	19.24 [7.60 ; 48.65]	<0.0001

285 *CI: Confidence Interval; LST: Life-Sustaining Treatment; NIV: Non-Invasive Ventilation; OR: Odds Ratio.*
 286 ^aglucose \geq 8 mmol/l; ^bNa $<$ 135 mmol/l; ^cSatO₂ $<$ 92% or partial arterial pressure of oxygen (PaO₂) $<$ 8 or FIO₂ $>$
 287 30% kPa; ^d craniectomy, hematoma evacuation, external ventricular drain

288
289 Variance Inflation Factors were small (below 1.5) suggesting very low correlation between
290 regression variables (**Table 4**).

291 **Table 4 Multicollinearity analysis using Variance Inflation Factor (VIF)**

292

Variables	VIF
ICU mortality	
<i>Clinical model</i>	
Age	1.04
Hyponatremia	1.01
Intracranial hypertension	1.03
Status epilepticus	1.07
<i>Intervention model</i>	
Invasive mechanical ventilation	1.19
Use of vasopressors	1.14
Oxygen trough NIV or High flow nasal cannula	1.05
Withholding LST	1.08

293 *ICU: Intensive Care Uni; LST: Life- Sustaining Treatment; NIV: Non-Invasive Ventilation, VIF: Variance Inflation*
294 *Factor.*

296 **Univariate and multivariable analysis for functional outcome at hospital discharge**

297 In univariate analysis, variables associated with a poor functional outcome at hospital
298 discharge (mRS ≥ 4) were age, SAPS II score, ischemic stroke, NIHSS score, coma at admission,
299 the need of IMV and of vasopressors. Occurrence of hyperglycemia and intracranial
300 hypertension were also associated with a poor functional outcome (**Table 5**).

301

302

303

304

305

306

307

308 **Table 5 Baseline characteristics, ICU management, outcomes and their univariate**
 309 **association with functional prognosis at hospital discharge**
 310

Variable	mRS at hospital discharge		p
	≤3 N=20	≥4 N=158	
Patient's characteristics			
Sex—no.(%)			0.77
<i>Female</i>	8 (40.0%)	58 (36.7%)	
<i>Male</i>	12 (60.0%)	100 (63.3%)	
Age, years	58.5 (54.0;71.5)	67.0 (58.0;76.0)	0.03
Chronic kidney disease	1 (5.0%)	13 (8.2%)	1.00
Diabetes mellitus	0 (0.0%)	21 (13.3%)	0.14
Chronic respiratory disease	1 (5.0%)	21 (13.3%)	0.48
Hypertension			0.67
Coronaropathy	0 (0.0%)	29 (18.5%)	0.05
Hematological malignancies, active solid tumor	3 (15.0%)	32 (20.3%)	0.77
Active smokers	3 (15.0%)	50 (32.1%)	0.12
SAPS II	32.5 (21.0;52.0)	56.0 (45.0;69.0)	<0.0001
mRS before stroke	0.5 (0.0;1.0)	0.0 (0.0;1.0)	0.53
GCS score at admission	15.0 (10.0;15.0)	9.5 (5.0;15.0)	0.02
Period of admission			1.00
2008-2013	12 (11.2%)	95 (88.8%)	
2014-2017	8 (11.3%)	63 (88.7%)	
Stroke characteristics			
Stroke type			0.02
Ischemic	4 (20.0%)	76 (48.1%)	
Hemorrhagic	16 (80.0%)	82 (51.9%)	
NIHSS	10.40 +/- 12.91	23.92 +/- 13.75	0.0004
Organ failure and complications at admission			
Coma ^a	3 (15.0%)	63 (42.0%)	0.02
Acute Circulatory failure ^b	6 (30.0%)	59 (39.6%)	0.41
Respiratory failure ^c	8 (40.0%)	39 (24.7%)	0.14
Aspiration pneumonia	5 (25.0%)	53 (34.0%)	0.42
Systemic secondary brain insults during the first 24 hours			
Hypoxemia ^d	7 (38.9%)	47 (32.0%)	0.56
Hypercapnia ^e	6 (35.3%)	52 (36.6%)	0.91
Hypotension ^f	6 (30.0%)	59 (39.6%)	0.41
Hyperglycemia ^g	1 (5.6%)	42 (29.6%)	0.04
Hyperthermia ^h	8 (40.0%)	64 (42.4%)	0.84
Anemia ⁱ	4 (22.2%)	34 (22.5%)	1.00
Hyponatremia ^j	4 (21.1%)	45 (29.8%)	0.43
Hypernatremia ^k	0 (0.0%)	17 (11.3%)	0.22

Complications during ICU stay

Intracranial hypertension	2 (10.0%)	85 (54.1%)	0.0002
Status epilepticus	8 (40.0%)	13 (8.3%)	0.0005
Neurosurgery ^l	3 (15.0%)	41 (26.1%)	0.41
VAP	4 (20.0%)	17 (10.9%)	0.27
Timing of VAP			
Early onset pneumonia	3 (75.0%)	8 (47.1%)	0.59
Late onset pneumonia	1 (25.0%)	9 (52.9%)	
Thrombosis ^m	0 (0.0%)	10 (6.4%)	0.61

Organ support during ICU stay

Invasive mechanical ventilation	10 (50.0%)	137 (86.7%)	0.0004
Reasons for intubation			0.72
Coma	7 (77.8%)	109 (79.6%)	
Respiratory failure	2 (22.2%)	23 (16.7%)	
Elective procedure	0 (0.0%)	5 (3.6%)	
Oxygen trough NIV or High flow nasal cannula	6 (31.6%)	26 (16.6%)	0.12
Use of vasopressors	7 (35.0%)	93 (60.4%)	0.03
Use of antihypertensive treatment	10 (50.0%)	60 (39.5%)	0.37
Use of renal replacement therapy	1 (5.0%)	10 (6.4%)	1.00

Outcomes

Duration of invasive ventilation, days	1.0 (0.0;7.0)	3.0 (1.0;7.0)	0.03
GCS at discharge	15.0 (14.0;15.0)	4.0 (3.0;14.0)	<0.0001
mRS	2.0 (2.0;3.0)	6.0 (6.0;6.0)	<0.0001
ICU length of stay, days	7.0 (4.0;9.5)	5.0 (2.0;10.5)	0.07
Withholding of care	0 (0.0%)	71 (45.2%)	0.0001
Withdrawal of care	0 (0.0%)	53 (33.8%)	0.0019

311 *GCS: Glasgow Coma Scale; ICU: Intensive Care Unit; LST: Life-Sustaining Treatment; mRS: modified Rankin Scale;*
 312 *NIHSS: National Institutes of Health Stroke Scale; NIV: Non-Invasive Ventilation; SAPS: Simplified Acute Physiology*
 313 *score; VAP: Ventilation Acquired Pneumonia.*

314 ^a *Glasgow Coma Scale ≤ 8, ^bpersistent hypotension requiring vasopressors or inotropes or associated to*
 315 *hyperlactatemia (> 2mmol/l); ^c need of non-invasive, high flow oxygen therapy or invasive mechanical ventilation*
 316 *for respiratory reasons; ^dSatO2 <92% or partial arterial pressure of oxygen (PaO2) <8 or FIO2 > 30% kPa; ^ePaCO2>*
 317 *6 kPa; ^fvasopressors or inotropes to maintain MAP>60mmHg; ^gglucose≥8 mmol/l; ^htemperature ≥ 38° Celsius;*
 318 *ⁱserum haemoglobin<10g/dl; ^jNa+<135 mmol/l; ^kNa+>155 mmol/l, ^lcraniectomy, hematoma evacuation, external*
 319 *ventricular drain, ^mproven venous thrombosis or pulmonary. embolism.*

320
321

322

323

324 Multivariate analysis of functional outcome at hospital discharge is presented in **Table 6**. The
325 clinical model showed that high NIHSS at admission was associated with poor outcomes
326 contrary to high GCS score and status epilepticus that were associated with a good functional
327 outcome. Invasive mechanical ventilation was the only variable of the intervention model
328 associated with poor functional outcome at hospital discharge.

329

330 **Table 6 Multivariate Logistic Regression of clinical factors and intervention associated with**
331 **functional prognosis at hospital discharge.**

332

333

Variables	OR	95%CI	<i>p</i>
Clinical model			
NIHSS at admission (per point)	1.07	[1.00 ; 1.14]	0.05
GCS at discharge (per point)	0.53	[0.29 ; 0.96]	0.04
Status epilepticus	0.10	[0.01 ; 0.83]	0.03
Intervention model			
Invasive mechanical ventilation	6.52	[2.43 ; 17.55]	0.0002

334 *CI: Confidence Interval; GCS: Glasgow Coma Scale; NIHSS: National Institutes of Health Stroke Scale; OR: Odds*
335 *Ratio.*

336

337

338

339

340 **Discussion**

341 Our study showed that the prognosis of the 215 stroke patients admitted to ICU with organ
342 failures was poor with an ICU mortality of 52% and only 11% of the patients surviving had a
343 good functional outcome at hospital discharge. We identified strong associations between
344 critical-care-related factors and outcomes. Indeed, the occurrence of intracranial
345 hypertension and the need for organ support therapy (IMV and vasopressor therapy) were
346 independent predictors of ICU mortality. Among these parameters, only the need for IMV was
347 independently associated with a poor functional outcome at hospital discharge.

348
349 The strongest independent clinical predictor for ICU death was the occurrence of ICH during
350 the ICU stay. Using a standardized definition, we observed that this complication was frequent
351 as it occurred in 43.4% of patients. This finding is in line with previous reports and suggests
352 that critically ill stroke patients died primarily from stroke-related complications occurring
353 during the ICU stay (2,11,23). However, the use of invasive ICP monitoring was very low as
354 only 5% of patients were monitored. Compared to TBI patients, the monitoring of ICP in stroke
355 patients remains poorly investigated and is not routinely recommended in patients with coma
356 after hemorrhagic or ischemic stroke (24,25). There is evidence that ICP can be elevated even
357 following decompressive hemicraniectomy or after hematoma removing (26,27).

358 In contrast, status epilepticus during the ICU stay, another stroke-related complication, was
359 associated with a better outcome. It has been proposed that this protective effect was related
360 to the reversibility of the initial coma when status epilepticus was the etiology of the
361 neurologic failure (23).

362

363 The strong association between some of the organ support therapies and outcome found in
364 our study provides new insights into the comprehension of the impact of acute phase
365 therapies on prognosis. Our intervention model identified that both IMV and vasopressor
366 support were independent predictors of ICU death contrary to NIV or HFNC oxygen therapy.
367 As the majority of patients required intubation because of coma for airway management
368 (82.3%) and vasopressor therapy is usually used for patients who developed intracranial
369 hypertension in order to maintain the cerebral blood perfusion, we hypothesized that IMV
370 and vasopressors mainly reflected the severity of the stroke. Another main hypothesis to
371 explain this association relies on the burden of care in ICU. Indeed, life-supporting therapies
372 as IMV or vasopressor support are associated with numerous adverse events and iatrogenic
373 consequences that, in turn, may worsen outcomes.(28)

374
375 An interesting finding is the absence of impact of systemic SBIs on outcome. The secondary
376 brain damages refer to delayed functional or structural damages observed after various types
377 of acute cerebral injuries. A large part of these damages is due to systemic SBIs such as
378 hypotension, hypoxemia or fever that increase the neurological damage by preventing the
379 regulation of cerebral blood flow (13,29). As systemic SBIs are physiologic abnormalities which
380 can be easily treated, it represents the cornerstone for severe TBI management (29).
381 Moreover, a large part of these pathomechanisms is supposed to be common between the
382 different acute cerebral injuries (30).

383 For non-ICU stroke patients, arterial hypotension is rare, but SBP under 100 mmHg or diastolic
384 blood pressure under 70 mmHg has been associated with poor neurological outcomes (31).
385 However, it remains unclear whether systemic SBIs impact outcomes for ICU stroke patients.
386 Our results suggest that contrary to TBI or SHA patients (29,32), systemic SBI may not be

387 deleterious. Recently, Fontaine *et al.* found similar results for critically ill patients with
388 convulsive status epilepticus (CSE) (33). The ongoing multicenter study SPICE that aims to
389 identify the effect of major systemic complications will help to precise the impact of SBIs on
390 outcome (12).

391 In contrast, the association between hyponatremia and ICU survival could be explain by the
392 higher probability to develop hyponatremia during the ICU stay for survivors compared to
393 patients who died. Indeed, the ICU length of stay was significantly longer in the survivor group
394 compared to those who died in ICU.

395
396 Except for age, all independent predictors of the ICU mortality for critically ill stroke
397 patients were related to the ICU stay (i.e., life support therapies and complications), contrary
398 to the neurologic severity scores at admission as NIHSS score or Glasgow coma scale.

399 These results suggest that ICU management strategy (i.e.: resources used) could impact on
400 survival. Despite a global poor prognosis, some patients may benefit of an ICU hospitalization
401 and have a good functional recovery. Therefore, it has been proposed to consider long enough
402 TLT for these patients (34) as a too short TLT may expose to inappropriate limitation of organ
403 supports and to a self-fulfilling prophecy. In contrast, a too long TLT may expose to a potential
404 loss of compassion and decreased quality of care (7). Our study did not evaluate the good
405 duration of TLT, but we consider that it should be long enough to evaluate specific indicators,
406 as it has been proposed for elderly patients admitted to ICU (35). For ICU stroke patients these
407 indicators could be the need or not of IMV and vasopressor support and the occurrence or not
408 of intracranial hypertension.

409

410

411 Our study has some limitations. First, the BSR registry has not been designed for ICU studies
412 and contrary to stroke specific data, all ICU data have been retrospectively recorded.
413 Second, we used the “ten events per variable (EPV) rule” to determine the number of subjects
414 required although current evidence supporting for binary logistic regression is weak (36).
415 Third, although the BSR could provide long-term mortality, we couldn’t study long-term
416 functional status. Fourth, the observational design of the study did not allow us to explore
417 causality. Finally, due to the high rate of withholding LST, we could not avoid the bias of self-
418 fulfilling prophecy.
419

420 **Conclusion**

421
422 Despite a poor global prognosis, a part of stroke patients with organ failures may benefit from
423 ICU admission and life-sustaining interventions. Therefore, prognostication is key but still
424 remains challenging. We found that occurrence of intracranial hypertension and the need of
425 IMV or vasopressor support were strong predictors of ICU mortality. Our study suggests that
426 critical care-related factors could provide valuable information for prognostication in addition
427 to the initial neurological severity. Our findings warrant further studies to evaluate the impact
428 of ICU care (notably SBI prevention and treatment) on patient's prognostication.

429

430

431 .

432

433

434

435

436

437

438

439

440 **Acknowledgements**

441 We would like to thank the Brest Stroke Registry collaborators :

442 Philippe Goas*, Irina Viakhireva-Dovganyuk*, François Mathias Merrien*, Aurore Jourdain*,

443 François Rouhart*, Amélie Leblanc*, Marie Bruguet*, Denis Marechal*, Jordan Coris*

444 *CHRU Brest, Department of Neurology & Stroke Unit, CHRU de Brest, Université de Bretagne
445 Occidentale, Brest, 29200, France.

446

447

448

449

450 **References**

- 451 **1. Widimsky P, Snyder K, Sulzenko J, Hopkins LN, Stetkarova I. Acute ischaemic stroke:**
452 **recent advances in reperfusion treatment. European Heart Journal. 2022 Dec 7;ehac684.**
- 453 **2. Carval T, Garret C, Guillon B, Lascarrou JB, Martin M, Lemarié J, et al. Outcomes of**
454 **patients admitted to the ICU for acute stroke: a retrospective cohort. BMC**
455 **Anesthesiology. 2022 Jul 25;22(1):235.**
- 456 **3. van Valburg MK, Arbous MS, Georgieva M, Brealey DA, Singer M, Geerts BF. Clinical**
457 **Predictors of Survival and Functional Outcome of Stroke Patients Admitted to Critical**
458 **Care. Crit Care Med. 2018;46(7):1085–92.**
- 459 **4. A A, Ad E, R K, S R, Mg H, M F. Outcome Predictors of Acute Stroke Patients in Need of**
460 **Intensive Care Treatment. Cerebrovascular diseases (Basel, Switzerland) [Internet].**
461 **2015 [cited 2022 Jan 4];40(1–2). Available from:**
462 **<https://pubmed.ncbi.nlm.nih.gov/26022716/>**
- 463 **5. de Montmollin E, Terzi N, Dupuis C, Garrouste-Orgeas M, da Silva D, Darmon M, et al.**
464 **One-year survival in acute stroke patients requiring mechanical ventilation: a**
465 **multicenter cohort study. Ann Intensive Care. 2020 May 7;10(1):53.**
- 466 **6. Sonnevile R, Gimenez L, Labreuche J, Smonig R, Magalhaes E, Bouadma L, et al. What is**
467 **the prognosis of acute stroke patients requiring ICU admission? Intensive Care Medicine.**
468 **2017 Feb;43(2):271–2.**
- 469 **7. Vink EE, Azoulay E, Caplan A, Kompanje EJO, Bakker J. Time-limited trial of intensive care**
470 **treatment: an overview of current literature. Intensive Care Med. 2018 Sep;44(9):1369–**
471 **77.**
- 472 **8. de Montmollin E, Schwebel C, Dupuis C, Garrouste-Orgeas M, da Silva D, Azoulay E, et**
473 **al. Life Support Limitations in Mechanically Ventilated Stroke Patients. Crit Care Explor.**
474 **2021 Feb 22;3(2):e0341.**
- 475 **9. McCracken DJ, Lovasik BP, McCracken CE, Frerich JM, McDougal ME, Ratcliff JJ, et al. The**
476 **Intracerebral Hemorrhage Score: A Self-Fulfilling Prophecy? Neurosurgery. 2019 Mar**
477 **1;84(3):741–8.**
- 478 **10. van Valburg MK, Arbous MS, Georgieva M, Brealey DA, Singer M, Geerts BF. Clinical**
479 **Predictors of Survival and Functional Outcome of Stroke Patients Admitted to Critical**
480 **Care. Crit Care Med. 2018 Jul;46(7):1085–92.**
- 481 **11. Alonso A, Ebert AD, Kern R, Rapp S, Hennerici MG, Fatar M. Outcome Predictors of Acute**
482 **Stroke Patients in Need of Intensive Care Treatment. Cerebrovascular Diseases.**
483 **2015;40(1–2):10–7.**
- 484 **12. Sonnevile R, Mazighi M, Bresson D, Crassard I, Crozier S, de Montmollin E, et al.**
485 **Outcomes of Acute Stroke Patients Requiring Mechanical Ventilation: Study Protocol for**
486 **the SPICE Multicenter Prospective Observational Study. Neurocrit Care. 2020**
487 **Apr;32(2):624–9.**

- 488 **13. Chesnut RM, Marshall LF, Klauber MR, Blunt BA, Baldwin N, Eisenberg HM, et al. The**
489 **role of secondary brain injury in determining outcome from severe head injury. J**
490 **Trauma. 1993 Feb;34(2):216–22.**
- 491 **14. Carney N, Totten AM, O’Reilly C, Ullman JS, Hawryluk GWJ, Bell MJ, et al. Guidelines for**
492 **the Management of Severe Traumatic Brain Injury, Fourth Edition. Neurosurgery. 2017**
493 **Jan 1;80(1):6–15.**
- 494 **15. Timsit S, Nowak E, Rouhart F, Goas P, Merrien FM, Tirel-Badet A, et al. High**
495 **completeness of the brest stroke registry evidenced by analysis of sources and capture-**
496 **recapture method. Neuroepidemiology. 2014;42(3):186–95.**
- 497 **16. Jannou V, Timsit S, Nowak E, Rouhart F, Goas P, Merrien FM, et al. Stroke with atrial**
498 **fibrillation or atrial flutter: a descriptive population-based study from the Brest stroke**
499 **registry. BMC Geriatr. 2015 Jun 11;15:63.**
- 500 **17. Timsit S, Bailly P, Nowak E, Merrien FM, Hervé D, Viakhireva-Dovganyuk I, et al.**
501 **Cryptogenic mechanism in ischaemic stroke patients is a predictor of 5-year survival: A**
502 **population-based study. Eur Stroke J. 2016 Dec;1(4):279–87.**
- 503 **18. Warlow CP. Epidemiology of stroke. Lancet. 1998 Oct;352 Suppl 3:SIII1-4.**
- 504 **19. Adams HP, Bendixen BH, Kappelle LJ, Biller J, Love BB, Gordon DL, et al. Classification of**
505 **subtype of acute ischemic stroke. Definitions for use in a multicenter clinical trial.**
506 **TOAST. Trial of Org 10172 in Acute Stroke Treatment. Stroke. 1993 Jan;24(1):35–41.**
- 507 **20. Hemphill JC, Bonovich DC, Besmertis L, Manley GT, Johnston SC. The ICH Score: A Simple,**
508 **Reliable Grading Scale for Intracerebral Hemorrhage. Stroke. 2001 Apr;32(4):891–7.**
- 509 **21. Incidence of stroke in Oxfordshire: first year’s experience of a community stroke**
510 **register. Br Med J (Clin Res Ed). 1983 Sep 10;287(6394):713–7.**
- 511 **22. Kalil AC, Metersky ML, Klompas M, Muscedere J, Sweeney DA, Palmer LB, et al.**
512 **Management of Adults With Hospital-acquired and Ventilator-associated Pneumonia:**
513 **2016 Clinical Practice Guidelines by the Infectious Diseases Society of America and the**
514 **American Thoracic Society. Clinical Infectious Diseases. 2016 Sep 1;63(5):e61–111.**
- 515 **23. OUTCOMEREA Study Group, de Montmollin E, Terzi N, Dupuis C, Garrouste-Orgeas M,**
516 **da Silva D, et al. One-year survival in acute stroke patients requiring mechanical**
517 **ventilation: a multicenter cohort study. Annals of Intensive Care [Internet]. 2020 Dec**
518 **[cited 2020 Oct 27];10(1). Available from:**
519 **[https://annalsofintensivecare.springeropen.com/articles/10.1186/s13613-020-00669-](https://annalsofintensivecare.springeropen.com/articles/10.1186/s13613-020-00669-5)**
520 **5**
- 521 **24. van der Worp HB, Hofmeijer J, Jüttler E, Lal A, Michel P, Santalucia P, et al. European**
522 **Stroke Organisation (ESO) guidelines on the management of space-occupying brain**
523 **infarction. Eur Stroke J. 2021 Jun;6(2):XC–CX.**

- 524 25. Chen CJ, Ding D, Ironside N, Buell TJ, Southerland AM, Testai FD, et al. Intracranial
525 pressure monitoring in patients with spontaneous intracerebral hemorrhage. *J*
526 *Neurosurg*. 2019 May 31;132(6):1854–64.
- 527 26. Huh J, Yang SY, Huh HY, Ahn JK, Cho KW, Kim YW, et al. Compare the Intracranial
528 Pressure Trend after the Decompressive Craniectomy between Massive Intracerebral
529 Hemorrhagic and Major Ischemic Stroke Patients. *J Korean Neurosurg Soc*. 2018
530 Jan;61(1):42–50.
- 531 27. Paldor I, Rosenthal G, Cohen JE, Leker R, Harnof S, Shoshan Y, et al. Intracranial pressure
532 monitoring following decompressive hemicraniectomy for malignant cerebral
533 infarction. *J Clin Neurosci*. 2015 Jan;22(1):79–82.
- 534 28. Forster AJ, Kyeremanteng K, Hooper J, Shojanian KG, van Walraven C. The impact of
535 adverse events in the intensive care unit on hospital mortality and length of stay. *BMC*
536 *Health Services Research*. 2008 Dec 17;8(1):259.
- 537 29. Kinoshita K, Kushi H, Hayashi N. Characteristics of parietal-parasagittal hemorrhage
538 after mild or moderate traumatic brain injury. *Acta Neurochir Suppl*. 2003;86:343–6.
- 539 30. Bramlett HM, Dietrich WD. Pathophysiology of cerebral ischemia and brain trauma:
540 similarities and differences. *J Cereb Blood Flow Metab*. 2004 Feb;24(2):133–50.
- 541 31. Castillo J, Leira R, García MM, Serena J, Blanco M, Dávalos A. Blood pressure decrease
542 during the acute phase of ischemic stroke is associated with brain injury and poor stroke
543 outcome. *Stroke*. 2004 Feb;35(2):520–6.
- 544 32. Doerfler S, Faerber J, McKhann GM, Elliott JP, Winn HR, Kumar M, et al. The Incidence
545 and Impact of Secondary Cerebral Insults on Outcome After Aneurysmal Subarachnoid
546 Hemorrhage. *World Neurosurgery*. 2018 Jun 1;114:e483–94.
- 547 33. Fontaine C, Lemiale V, Resche-Rigon M, Schenck M, Chelly J, Geeraerts T, et al.
548 Association of systemic secondary brain insults and outcome in patients with convulsive
549 status epilepticus: A post hoc study of a randomized controlled trial. *Neurology*. 2020
550 Nov 3;95(18):e2529–41.
- 551 34. Alkhachroum A, Bustillo AJ, Asdaghi N, Marulanda-Londono E, Gutierrez CM, Samano D,
552 et al. Withdrawal of Life-Sustaining Treatment Mediates Mortality in Patients With
553 Intracerebral Hemorrhage With Impaired Consciousness. *Stroke*. 2021 Dec;52(12):3891–
554 8.
- 555 35. Loyrion E, Agier L, Trouve-Buisson T, Gavazzi G, Schwebel C, Bosson JL, et al. Dynamic
556 SOFA score assessments to predict outcomes after acute admission of octogenarians to
557 the intensive care unit. *PLOS ONE*. 2021 Aug 2;16(8):e0253077.
- 558 36. van Smeden M, de Groot JAH, Moons KGM, Collins GS, Altman DG, Eijkemans MJC, et al.
559 No rationale for 1 variable per 10 events criterion for binary logistic regression analysis.
560 *BMC Medical Research Methodology*. 2016 Nov 24;16(1):163.

Fig.1 Flowchart

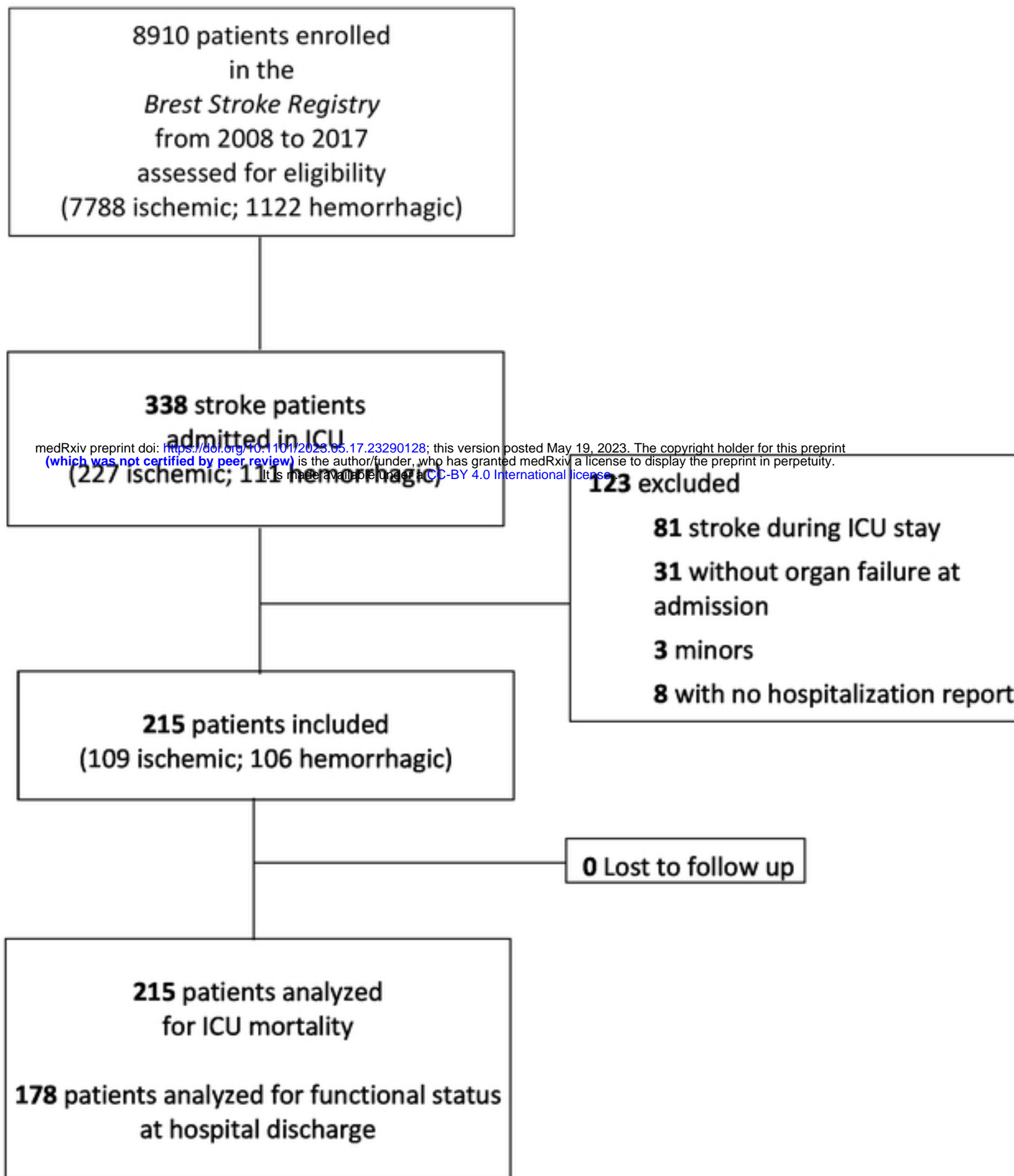
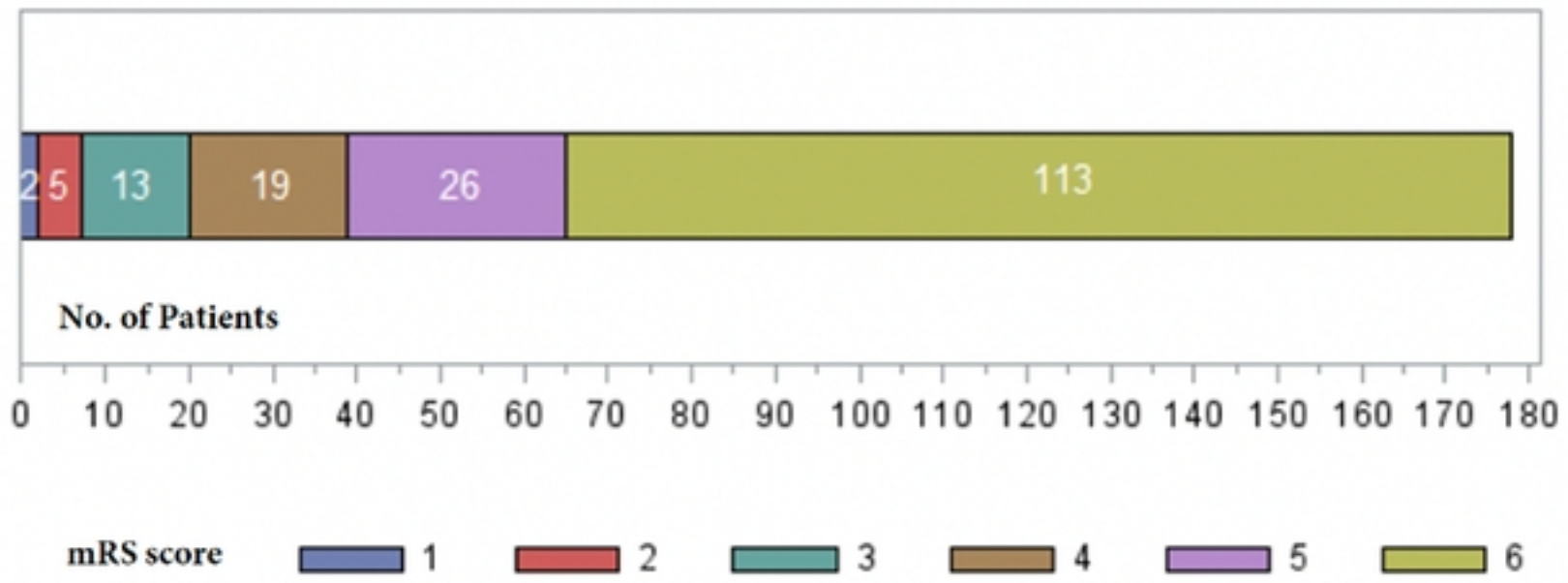


Figure1

Fig.2 Modified Rankin Scale at Hospital discharge



medRxiv preprint doi: <https://doi.org/10.1101/2023.05.17.23290128>; this version posted May 19, 2023. The copyright holder for this preprint (which was not certified by peer review) is the author/funder, who has granted medRxiv a license to display the preprint in perpetuity. It is made available under a [CC-BY 4.0 International license](https://creativecommons.org/licenses/by/4.0/).