

# Prehospital activation of the cardiac catheterisation laboratory in ST-segment elevation myocardial infarction (STEMI) for primary percutaneous coronary intervention (PCI)

Short title: Prehospital activation in STEMI for Primary PCI

Michael L Savage (BAppSc)<sup>1,2</sup>, Karen Hay (BVSc, PhD)<sup>2,3</sup>, William Volbon (BAppSc)<sup>4</sup>, Tan Doan (BPharm, PhD)<sup>5</sup>, Dale Murdoch J (MBBS, FRACP)<sup>1,2</sup>, Christopher Hammett (MBChB, MD, FRACP)<sup>6</sup>, Rohan Poulter (MBBS, FRACP)<sup>4, 7</sup>, Darren L Walters (MBBS, FRACP, MPhil)<sup>1,2</sup>, Russell Denman (MBBS, FRACP)<sup>1,2</sup>, Isuru Ranasinghe (MBChB, MMed, PhD, FRACP)<sup>1,2</sup>, Owen Christopher Raffel (MB, CHB, FRACP)<sup>1,2</sup>

Corresponding Author: Michael Savage, The Prince Charles Hospital, Cardiology Department, Rode Rd, Chermside, Brisbane 4032, Queensland, Australia.

Email; [michael.savage@health.qld.gov.au](mailto:michael.savage@health.qld.gov.au) Tel.: +61 7 3139 5245.

1. Cardiology Department, The Prince Charles Hospital, Brisbane QLD Australia
2. School of Clinical Medicine, Faculty of Medicine, University of Queensland, Brisbane QLD Australia
3. QIMR Berghofer Medical Research Institute, Brisbane QLD Australia
4. Queensland Cardiac Outcomes Registry, QLD Australia
5. Queensland Ambulance Service, Brisbane QLD Australia
6. Cardiology Department, The Royal Brisbane and Women's Hospital, Brisbane QLD Australia
7. Cardiology Department, Sunshine Coast University Hospital, Birtinya QLD Australia

Word Count - 6338

## Abstract

### **Background:**

Prehospital activation of the cardiac catheter laboratory is associated with significant improvements in ST-segment elevation myocardial infarction (STEMI) performance measures. However, there is equivocal data, particularly within Australia regarding its influence on mortality. We assessed the association of prehospital activation on performance measures and mortality in STEMI patients treated with primary percutaneous coronary intervention (PCI) from the Queensland Cardiac Outcomes Registry (QCOR).

### **Methods:**

Consecutive ambulance transported STEMI patients treated with primary PCI were analysed from 1<sup>st</sup> January 2017 to 31<sup>st</sup> December 2020 from the QCOR. The total and direct effects of prehospital activation on the primary outcomes (30-day and 1-year cardiovascular mortality) were estimated using logistic regression analyses. Secondary outcomes were STEMI performance measures.

### **Results:**

Among 2498 patients (mean age: 62.2 ± 12.4 years; 79.2% male), 73% underwent prehospital activation. Median door-to-balloon (DTB) time (34mins [26-46] vs 86 mins [68-113]; p<0.001), first-electrocardiograph-to-balloon (ECGTB) time (83.5 mins [72-98] vs 109 mins [81-139]; p<0.001), and proportion of patients meeting STEMI targets (DTB<60mins 90% vs 16%; p<0.001), ECGTB<90mins (62% vs 33%; p<0.001) were significantly improved with prehospital activation. Prehospital activation was associated with significantly lower 30-day (1.6% vs 6.6%; p<0.001) and 1-year cardiovascular mortality (2.9% vs 9.5%; p<0.001). After adjustment, no prehospital activation was strongly associated with increased 30-day (OR: 3.6; 95%CI: 2.2-6.0, p<0.001) and 1-year cardiovascular mortality (OR: 3.0 (95%CI:2.0-4.6; p<0.001).

### **Conclusions:**

Prehospital activation of cardiac catheterisation laboratory for primary PCI was associated with significantly shorter time to reperfusion, achievement of STEMI performance measures and lower 30-day and 1-year cardiovascular mortality.

### Keywords

STEMI, ST-Elevation Myocardial Infarction, Primary PCI, Prehospital activation, Direct Transfer, Prehospital notification

## Clinical Perspective

- In patients who suffer STEMI, prehospital activation of the cardiac catheter laboratory and initiation of medical therapy is associated with shorter time to reperfusion, greater achievement of performance measures and lower cardiovascular mortality
- This study adds to the existing literature and demonstrates that a standardised prehospital activation strategy can be implemented on a large scale
- Widespread implementation of standardised prehospital activation strategies may offer opportunity to expedite STEMI care and improve outcomes

## Introduction

Cardiovascular mortality remains one of the leading causes of death worldwide, with majority of deaths occurring following acute myocardial infarctions [1]. Early identification and treatment of acute ST-segment elevation myocardial infarction (STEMI) is crucial with the primary aim is to minimise the delay to reperfusion of the culprit coronary artery. The preferred method of reperfusion, if it can be achieved within 120mins of diagnosis, is primary percutaneous coronary intervention (PCI). [1]. Historically, reducing the in-hospital delay to treatment or door-to-balloon (DTB) time has been the primary focus of improving outcomes in with primary PCI, and is associated with lower short- and long-term mortality [2-4]. Several hospital-based strategies have seen significant reductions in median DTB times since their implementation [5]. However, despite these reductions in DTB, overall mortality following STEMI has not significantly improved over time with primary PCI [2, 4].

There has been a more recent shift to improve patient outcomes following STEMI by focusing on the collaboration with prehospital emergency medical services and incorporating strategies to reduce the prehospital delay to treatment. Implementation of several prehospital strategies both locally and internationally such as the Pre-Act initiative have demonstrated reductions in prehospital delays, further reductions in DTB time and total ischaemic time, and reduced false positive catheterisation laboratory (CCL) activations when protocol driven prehospital STEMI pathways are implemented [6-11]. The impact of prehospital notification of STEMI and prehospital activation of the CCL on mortality however remains mixed with either lower [7, 8, 12-15] or equivalent [16, 17] outcomes reported both across Australia and internationally. The Australian Acute Coronary Syndrome guidelines recommend

primary PCI as the preferred reperfusion strategy if it can be performed within 90 minutes of first medical contact (FMC) [18] yet do not specify prehospital notification of STEMI by paramedics and/or prehospital activation of the CCL as strategies for achieving performance targets.

Significant variability exists in the design, implementation and utilisation of prehospital strategies particularly within Australia [11, 14, 15]. Prehospital emergency care within Queensland, Australia is provided by the Queensland Ambulance Service (QAS), which is a single, state-wide, government-funded service. The state-wide prehospital direct primary PCI referral pathway and prehospital activation strategy has been previously described in detail [14, 19] (Supplement 1). The aim of this study was to examine the impact of a well-established state-wide prehospital activation strategy on achievement of STEMI performance measures and mortality in patients presenting with STEMI who received primary.

## Methods

This multicentre study consisted of consecutive STEMI patients over a 4-year period (1<sup>st</sup> January 2017 – 31<sup>st</sup> December 2020) who were transported by ambulance to one of eight participating primary PCI facilities in Queensland (Supplement 2) and underwent primary PCI. Queensland, a state within north-eastern Australia, covers an area of over 1.8 million square kilometers (695 thousand square miles) and services a population of approximately 5.3 million people. Patients who experienced an in-hospital STEMI, underwent inter-hospital transfers or self-presented were excluded from analysis. Patients with out-of-hospital cardiac arrest (OHCA) and emergency pre-procedural intubation with unknown neurological status were also

excluded (Figure 1). Comparisons were performed between ambulance transported STEMI patients who underwent the direct primary PCI referral and prehospital CCL activation pathway with ambulance transported STEMI patients who did not have direct primary PCI referral and prehospital activation of the CCL.

The state-wide prehospital activation strategy involves STEMI diagnosis, PCI referral subject to reperfusion checklist (Supplement 1) and initiation of medical therapy by paramedics upon direct telephone consultation with the on-call interventional cardiologist, who activates the CCL team prior to hospital arrival. Patient demographic characteristics, procedural variables, STEMI performance measures and clinical endpoints of 30-day mortality and 1-year mortality were compared between groups. Patients in this study who underwent prehospital activation pathway were administered prehospital concomitant antiplatelet therapy (aspirin 300mg orally in combination with ticagrelor 180mg orally or clopidogrel 600mg orally) and anticoagulant therapy (heparin 5,000 units intravenously) unless contraindicated, by the paramedics immediately post PCI referral. Whereas those who did not undergo prehospital activation, did not have administration of heparin nor ticagrelor/clopidogrel until review in the emergency department.

#### Data Sources

The Queensland Cardiac Outcomes Registry (QCOR) is a government funded central, state-wide data registry of which all public hospital cardiac catheter laboratories contribute patient information and procedural data. There are 8 public hospitals who participate, 3 metropolitan centres and 5 regional centres (Supplement 2). Patient demographics and periprocedural data were obtained from the QCOR and hospital electronic medical record, with data linkage from the Queensland

Hospital Admitted Patient Data Collection from the Queensland Health Statistical Services Branch. Prehospital data were obtained from data linkage with the QAS STEMI database. Mortality and cause of death data were obtained utilising data linkage with the Queensland Registry of Births Deaths and Marriages. This study was approved by the Human Research Ethics Committee of the Prince Charles Hospital (LNR/2020/TPCH/75136) with a waiver of consent obtained. Because of the sensitive nature of the data collected for this study, requests to access the dataset from qualified researchers trained in human subject confidentiality protocols may be sent to the relevant data custodians within Queensland Health.

#### Data definitions

DTB time was defined as the time in minutes from arrival at the PCI facility to the use of the first wire, balloon or aspiration thrombectomy device in the PCI procedure. First Medical Contact (FMC) for all patients was defined as initial paramedic contact. First Diagnostic Electrocardiograph (FDECG) was defined as the first electrocardiograph which demonstrated ST-segment changes consistent with the diagnosis of STEMI. Out of hours (OH) presentation was defined as between 1700-0800 hours during weekdays and during the weekend. Cardiovascular mortality was defined as any deaths resulting from the combination of ischaemic heart disease, cardiac failure, cerebrovascular disease, peripheral artery disease and aortic aneurysm.

#### Statistical Analysis

Continuous variables were compared between groups using an independent t-test or Wilcoxon's rank-sum test as appropriate and categorical variables were compared

using Pearson's chi-square test. Continuous variables were categorised using clinically meaningful cut-points. A causal diagram (Supplement 3) was constructed *a priori* to depict postulated inter-relationships between variables of interest, confounders and mortality. The Dagitty [20] online user interface was used to select appropriate adjustment sets of covariates to estimate the total and direct effects of prehospital activation on 1-year mortality [21]. Confounders of interest in the relationship between prehospital activation and mortality comprised patient characteristics (age, sex) and presentation characteristics (cardiac arrest pre-PCI, regional hospital, out of hours presentation). Total effect estimates for the effect of prehospital activation on 30-day and 1-year mortality were derived from multivariable logistic regression models adjusted for confounders in the minimally sufficient adjustment set (age, sex, cardiac arrest pre-PCI, regional hospital, out of hours presentation) while direct effect estimates were additionally adjusted for the mediator (FDECG to balloon). Survival over time was explored graphically using Kaplan Meier methods. Analyses were performed using the Stata statistical software package (StataCorp. 2017. *Stata Statistical Software: Release 15*. College Station, TX: StataCorp LLC).

## Results

### Cohort Characteristics

A total of 2,498 patients were included, of which 1,832 (73.3%) patients underwent in the prehospital activation and 666 (26.7%) who did not have prehospital activation. The mean age of the patients was 62.2 years (SD:12.4) and 1978 (79.2%) were male (Table 1). The proportion of STEMI presentations receiving prehospital



activation did not significantly differ over the course of the study period ( $p=0.072$ ). Patients with prehospital activation were more likely to be male, have dyslipidaemia and less likely to have a cardiac arrest pre-PCI (Table 1). The mean age, use of radial arterial access and drug eluting stents (DES) were similar between groups and did not significantly change over the study period. Rates of Intra-aortic balloon pump and temporary pacing wire requirements were low and similar between groups. Prehospital activation was less likely to occur out of hours compared to in hours (IH) (OH 70% vs IH 78%;  $p<0.001$ ) and in regional centres (Metropolitan 80% vs Regional 65%,  $p<0.001$ ). Regional and metropolitan centres are listed in supplement 2.

#### STEMI Performance Measures

Median DTB time was significantly shorter with prehospital activation (34mins vs 86mins;  $p<0.001$ ) compared to those who did not have prehospital activation. Achievement of DTB<60mins (90% vs 16%;  $p<0.001$ ) and FMC to balloon (43% vs 8%;  $p<0.001$ ) and FDECG to balloon (62% vs 33%;  $p<0.001$ ) targets were also both significantly improved with prehospital activation. Comparisons of total ischaemic time and critical timepoints between groups are displayed (Figure 2). There was a 48-minute difference in median hospital door to CCL time in prehospital activation patients compared to no prehospital activation (12mins vs 60mins;  $p<0.001$ ). There was also a small yet significant difference in median CCL to balloon time (23mins vs 25mins;  $p<0.001$ ) in the prehospital activation cohort. There was a 47-minute median reduction in FMC to balloon and 67-minute median reduction in overall ischaemic time (Symptom to Balloon) with prehospital activation (Figure 2). Significant differences were seen in achievement of DTB<60mins both in hours (IH) and out of

hours with prehospital activation associated with significant and comparable reductions in median DTB times (IH 74mins vs 29mins;  $p < 0.001$ , OH 90mins vs 39mins;  $p < 0.001$ ) (Table 2).

### Mortality

Of 2498 patients, 74 (3.0%) died within 30-days (all cardiovascular cause) and 130 (5.2%) died within 1-year of the index procedure. Overall unadjusted 30-day mortality was significantly higher for patients who did not have prehospital activation compared to patients who had prehospital activation (6.6% vs 1.6%;  $p < 0.001$ ). Similarly, one-year all-cause mortality was significantly higher for those who did not have prehospital activation (10.2% vs 3.4%;  $p < 0.001$ ). One-year cardiovascular mortality was 4.2% and significantly higher for those who did not have prehospital activation (8.6% vs 2.6%;  $p < 0.001$ ). Based on summary statistics (Table 3), variables with strong unadjusted associations with 1-year mortality included age, diabetes, radial arterial access, drug-eluting stent usage, cardiac arrest pre-PCI, and FDECG to balloon time. After adjustment, patients who did not have prehospital activation were still at significantly increased risk of 30-day mortality compared to patients who had prehospital activation (total effect: OR: 3.6; 95%CI: 2.2-6.0,  $p < 0.001$ ; direct effect: OR: 2.9, 95%CI: 1.7-4.9;  $p < 0.001$ ), 1-year all-cause mortality (total effect: OR: 2.8; 95% CI: 1.9-4.1,  $p < 0.001$ ; direct effect: OR: 2.4; 95% CI: 1.6-3.6,  $p < 0.001$ ) and 1-year cardiovascular mortality (total effect: OR: 3.0; 95% CI: 2.1-5.1,  $p < 0.001$ ; direct effect: OR: 2.4; 95% CI: 1.5-3.8,  $p < 0.001$ ). Nelson-Aalen survival estimates by prehospital notification group are presented graphically in Figure 3. Consistent with the logistic regression results, there was markedly increased early mortality risk for those without prehospital activation compared to those with prehospital activation.

After excluding the initial 30-day period, the difference in survival between groups amongst those who survived at least 30 days was not statistically significant (HR: 1.3; 95% CI: 0.9-2.1, P=0.21).

## Discussion

This state-wide multicentre registry study highlights the low mortality rates and significant improvements in STEMI performance measures associated with patients who underwent ambulance prehospital activation and direct catheterisation laboratory transfer for STEMI. Previously published literature regarding the impact of prehospital activation of STEMI patients are consistent with the findings of this study with the consensus that there are significantly improved STEMI performance metrics [8, 9, 11, 12, 15, 22, 23]. Whilst the literature is predominantly supportive of lower mortality associated with prehospital activation strategies [8, 12-15], recently published data was suggestive of no mortality benefit with a prehospital notification strategy [16, 17]. The published literature from Australia regarding mortality is mixed with national data showing lower mortality with ambulance transported patients compared to those who self-present in the GRACE and CONCORDANCE registries [24]. More recent data from Victoria however highlighted lower mortality with patients who self-presented compared to ambulance transported patients, however there were significantly greater comorbidities, higher rates of cardiogenic shock and mechanical ventricular support in the ambulance transported groups in this cohort study [17]. The increased risk of mortality with associated no prehospital activation in our study are consistent with mortality estimates demonstrated in previous literature with increasing risk of mortality associated with delays to treatment [25, 26].

Prehospital anti-thrombotic medication has been associated with improved TIMI flow prior to PCI, lower rates of 30-day stent thrombosis and lower mortality [27-29] and may explain, in-conjunction with lower time to reperfusion, the association with lower mortality with prehospital activation in our study compared to previously published Australian literature [16, 17]. While these studies did demonstrate similar reductions in time to reperfusion, it is unclear the timing of initiation of medical therapy, including anti-thrombotic medication which may also contribute to the mortality differences. Other differences in mortality in previously reported studies may be due to reporting all-cause mortality rather than specifically cardiovascular mortality as well as the inclusion/exclusion of patients with cardiogenic shock, out-of-hospital cardiac arrest and pre-procedural intubation with uncertain neurological status. Our study excluded patients who had out-of-hospital cardiac arrest and pre-procedural intubation with uncertain neurological status. These patients were deemed salvage due to the significantly high proportion of neurovascular mortality in this group despite appropriate cardiovascular reperfusion. However, the current study did not exclude patients with cardiogenic shock which may develop with longer delays to treatment as noted in other studies [17]. Cardiac arrest prior to PCI was identified on the causal pathway and was incorporated into the multivariate analysis. Unlike previous studies, cause of death was also analysed in our study and both all-cause and cardiovascular mortality showed lower rates associated with prehospital activation.

Significant reductions in all STEMI performance measures were associated with prehospital activation. Whilst the current Australian [18] and ACC/AHA STEMI [30] guidelines suggest the metric FMC to balloon, the ESC STEMI guidelines [1] have adopted a STEMI diagnosis to device time within 90 minutes as a performance

measure. This study also incorporated the similar metric of FDECG to balloon time, as well as FMC to balloon, which may be a more achievable performance metric when compared to FMC to balloon especially when there is delayed electrocardiographic or evolving evidence of STEMI. There was a significant albeit small difference in our study in median time from FMC to FDECG between groups with noticeably shorter time in the prehospital activation cohort. This may be explained in part by evolving or delayed electrocardiographic evidence of STEMI, however it is important to acknowledge that initial misdiagnosis of STEMI may contribute to this, despite prehospital activation being associated with lower false positive STEMI activations [9, 10, 14]. Prehospital activation had the largest system timing impact on DTB time (Figure 2). Whilst the focus has shifted to overall system delays, DTB time still provides actionable targets to hospitals and is directly affected by in-hospital processes. This metric can still be used to support in-hospital improvements and accountability [31]. Similar to previously published data there was a 5-minute difference in the median FMC to Door time with patients who did not have prehospital activation being slightly faster (Figure 2). Additional workload performed by paramedics in the prehospital activation pathway (patient consent, primary PCI referral with the interventional cardiologist and subsequent administering of medication), may account for these differences.

The proportion of patients with STEMI who are ambulance transported and have prehospital notification/activation in published Australian literature continues to remain low and constant with less than half of patients receiving prehospital notification [9, 16, 24, 32]. This is significantly lower than current data presented in this study (73%). Recent international data from the United States is also suggestive

of lower rates of prehospital activation compared to the current study with approximately 40% of patients having prehospital activation [7]. A comparison of prehospital activation strategies between Queensland and the Mission Lifeline: Pre-ACT strategy is displayed in Figure 4. There were regional differences in the use of prehospital activation in our study which may be associated with numerous factors such as paramedic staffing and experience levels as well as other unobserved factors. Increasing the use of prehospital activation may present as an opportunity to improve STEMI care in regional areas. Previous examination of predictors of prehospital notification and similar to our study demonstrated greater use of prehospital notification during in-hours [17], yet unlike the predictors listed in this Victorian study, our study did not associate any sex-related differences with prehospital activation nor differences in the identified culprit coronary vessel. Previous literature examining sex differences in STEMI have suggested the use of standardised prehospital protocols reducing the differences in sex related treatment discrepancies [33, 34].

This study adds to the support for standardised prehospital strategies incorporating prehospital notification of STEMI, initiation of medical therapy and activation of the cardiac catheterisation laboratory to improve STEMI performance measures, reduce overall time to reperfusion and lower both short- and longer-term mortality. Routine monitoring of prehospital activation rates may provide opportunities to improve prehospital care in STEMI.

## Strengths and Limitations

This is a multicentre study analysing prospectively collected data from the QCOR registry in a large cohort of consecutive STEMI patients treated with Primary PCI. Despite our statistical methods used and due to the observational nature of this study, there may be unmeasured cofounders which could influence mortality. Whilst there may be unmeasured confounders, our study did have complete and high-quality measures for many important confounders related to cardiovascular outcomes as described in the causal pathway diagram. A comparison of total and direct effects involved in the association between prehospital activation and 1-year mortality enables us to better understand the causal pathways.

Selection bias may exist when identifying STEMI in the prehospital setting and may result in exclusion of ambiguous or evolving STEMI presentations or those patients where STEMI was not initially recognised, from the direct primary PCI referral pathway. Previously documented reasons for no prehospital activation include availability of critical care paramedics [14] which may have contributed to the lower utilization of prehospital activation in more regional centres and after-hours as well as proximity to hospital, which also may explain the significantly shorter FMC to hospital arrival time in the no-prehospital activation group [35]. Additionally bypass of non-PCI facilities could contribute to longer prehospital travel times in the prehospital notification group and has been previously demonstrated to increase ambulance transport time [36]. Our study also only compared patients who underwent primary PCI for treatment of STEMI within 12 hours of symptom onset and STEMI patients who were treated medically or with coronary artery bypass may add to potential bias. This study did not analyse secondary prevention measures such as post procedural

medication compliance or cardiac rehabilitation adherence which may also influence longer-term mortality.

## Conclusion

A standardised state-wide strategy incorporating prehospital notification of STEMI, initiation of medical therapy and prehospital activation of the cardiac catheter laboratory significantly improved STEMI performance measures, reduced total ischaemic time and is associated with lower 30-day and 1-year mortality.

Widespread implementation of prehospital activation may offer significant opportunity to expedite STEMI care and improve outcomes.

## Acknowledgements

Nil

## Ethics Approval/s

This study was approved by the Human Research Ethics Committee of the Prince Charles Hospital (LNR/2020/TPCH/75136).

## Sources of Funding

Nil

## Disclosures

Nil



## References

1. Ibanez, B., et al., *2017 ESC Guidelines for the management of acute myocardial infarction in patients presenting with ST-segment elevation: The Task Force for the management of acute myocardial infarction in patients presenting with ST-segment elevation of the European Society of Cardiology (ESC)*. Eur Heart J, 2018. **39**(2): p. 119-177.
2. Menees, D.S., et al., *Door-to-balloon time and mortality among patients undergoing primary PCI*. N Engl J Med, 2013. **369**(10): p. 901-9.
3. Rathore, S.S., et al., *Association of door-to-balloon time and mortality in patients admitted to hospital with ST elevation myocardial infarction: national cohort study*. BMJ, 2009. **338**: p. b1807.
4. Nallamothu, B.K., et al., *Relation between door-to-balloon times and mortality after primary percutaneous coronary intervention over time: a retrospective study*. Lancet, 2015. **385**(9973): p. 1114-22.
5. Bradley, E.H., et al., *Strategies for reducing the door-to-balloon time in acute myocardial infarction*. N Engl J Med, 2006. **355**(22): p. 2308-20.
6. Kontos, M.C., et al., *Prehospital Activation of Hospital Resources (PreAct) ST-Segment-Elevation Myocardial Infarction (STEMI): A Standardized Approach to Prehospital Activation and Direct to the Catheterization Laboratory for STEMI Recommendations From the American Heart Association's Mission: Lifeline Program*. J Am Heart Assoc, 2020. **9**(2): p. e011963.
7. Shavadia, J.S., et al., *Association Between Cardiac Catheterization Laboratory Pre-Activation and Reperfusion Timing Metrics and Outcomes in Patients With ST-Segment Elevation Myocardial Infarction Undergoing Primary Percutaneous Coronary Intervention: A Report From the ACTION Registry*. JACC Cardiovasc Interv, 2018. **11**(18): p. 1837-1847.
8. Farshid, A., et al., *Shorter ischaemic time and improved survival with pre-hospital STEMI diagnosis and direct transfer for primary PCI*. Heart Lung Circ, 2015. **24**(3): p. 234-40.
9. Shoaib, M., et al., *Impact of Pre-Hospital Activation of STEMI on False Positive Activation Rate and Door to Balloon Time*. Heart Lung Circ, 2022. **31**(3): p. 447-455.
10. Tolles, J., et al., *The Effect of Implementation of the American Heart Association Mission Lifeline PreAct Algorithm for Prehospital Cardiac Catheterization Laboratory Activation on the Rate of "False Positive" Activations*. Prehosp Disaster Med, 2020. **35**(4): p. 388-396.
11. Hutchison, A.W., et al., *Pre-hospital 12 lead ECG to triage ST elevation myocardial infarction and long term improvements in door to balloon times:*

- The first 1000 patients from the MonAMI project.* Heart Lung Circ, 2013. **22**(11): p. 910-6.
12. Savage, M.L., et al., *Pre-hospital ambulance notification and initiation of treatment of ST elevation myocardial infarction is associated with significant reduction in door-to-balloon time for primary PCI.* Heart, Lung and Circulation, 2014. **23**(5): p. 435-443.
  13. Sivagangabalan, G., et al., *Effect of prehospital triage on revascularization times, left ventricular function, and survival in patients with ST-elevation myocardial infarction.* Am J Cardiol, 2009. **103**(7): p. 907-12.
  14. Savage, M.L., et al., *Clinical Outcomes in Pre-Hospital Activation and Direct Cardiac Catheterisation Laboratory Transfer of STEMI for Primary PCI.* Heart Lung Circ, 2022. **31**(7): p. 974-984.
  15. Carstensen, S., et al., *Field triage to primary angioplasty combined with emergency department bypass reduces treatment delays and is associated with improved outcome.* Eur Heart J, 2007. **28**(19): p. 2313-9.
  16. Hamilton, G.W., et al., *Reperfusion Times and Outcomes in Patients With ST-Elevation Myocardial Infarction Presenting Without Pre-Hospital Notification.* Cardiovasc Revasc Med, 2022. **41**: p. 136-141.
  17. Blusztajn, D., et al., *Predictors of hospital prenotification for STEMI and association of prenotification with outcomes.* Emerg Med J, 2022. **39**(9): p. 666-671.
  18. Chew, D.P., et al., *National Heart Foundation of Australia and Cardiac Society of Australia and New Zealand: Australian clinical guidelines for the management of acute coronary syndromes 2016.* Med J Aust, 2016. **205**(3): p. 128-33.
  19. Doan, T.N., et al., *Prehospital ST-Segment Elevation Myocardial Infarction (STEMI) in Queensland, Australia: Findings from 11 Years of the Statewide Prehospital Reperfusion Strategy.* Prehosp Emerg Care, 2020. **24**(3): p. 326-334.
  20. Textor, J., J. Hardt, and S. Knuppel, *DAGitty: a graphical tool for analyzing causal diagrams.* Epidemiology, 2011. **22**(5): p. 745.
  21. Shrier, I. and R.W. Platt, *Reducing bias through directed acyclic graphs.* BMC Med Res Methodol, 2008. **8**: p. 70.
  22. Savage, M.L., et al., *Pre-hospital ambulance notification and initiation of treatment of ST elevation myocardial infarction is associated with significant reduction in door-to-balloon time for primary PCI.* Heart Lung Circ, 2014. **23**(5): p. 435-43.
  23. Hutchison, A.W., et al., *Prehospital 12-lead ECG to triage ST-elevation myocardial infarction and emergency department activation of the infarct team significantly improves door-to-balloon times: ambulance Victoria and*

- MonashHEART Acute Myocardial Infarction (MonAMI) 12-lead ECG project.* *Circ Cardiovasc Interv*, 2009. **2**(6): p. 528-34.
24. Redwood, E., et al., *The influence of travelling to hospital by ambulance on reperfusion time and outcomes for patients with STEMI.* *Med J Aust*, 2021. **214**(8): p. 377-378.
  25. De Luca, G., et al., *Time delay to treatment and mortality in primary angioplasty for acute myocardial infarction: every minute of delay counts.* *Circulation*, 2004. **109**(10): p. 1223-5.
  26. Tarantini, G., et al., *Primary percutaneous coronary intervention for acute myocardial infarction: Is it worth the wait? The risk-time relationship and the need to quantify the impact of delay.* *Am Heart J*, 2011. **161**(2): p. 247-53.
  27. Wang, H., et al., *Effect of Pre-Hospital Ticagrelor in Primary Percutaneous Coronary Intervention on Patients with ST-Segment Elevation Myocardial Infarction: A systematic review and meta-analysis.* *J Pak Med Assoc*, 2019. **69**(9): p. 1344-1348.
  28. Bagai, A., et al., *Duration of ischemia and treatment effects of pre- versus in-hospital ticagrelor in patients with ST-segment elevation myocardial infarction: Insights from the ATLANTIC study.* *Am Heart J*, 2018. **196**: p. 56-64.
  29. Fabris, E., et al., *Pre-Hospital Antiplatelet Therapy for STEMI Patients Undergoing Primary Percutaneous Coronary Intervention: What We Know and What Lies Ahead.* *Thromb Haemost*, 2021. **121**(12): p. 1562-1573.
  30. O'Gara, P.T., et al., *2013 ACCF/AHA guideline for the management of ST-elevation myocardial infarction: a report of the American College of Cardiology Foundation/American Heart Association Task Force on Practice Guidelines.* *Circulation*, 2013. **127**(4): p. e362-425.
  31. Murugiah, K., A. Gupta, and H.M. Krumholz, *Time to Reperfusion in ST-Segment Elevation Acute Myocardial Infarction: When Does the Clock Start?* *Circ Cardiovasc Interv*, 2021. **14**(2): p. e010459.
  32. Biswas, S., et al., *Australian Trends in Procedural Characteristics and Outcomes in Patients Undergoing Percutaneous Coronary Intervention for ST-Elevation Myocardial Infarction.* *Am J Cardiol*, 2018. **121**(3): p. 279-288.
  33. Savage, M.L., et al., *Sex differences in time to primary percutaneous coronary intervention and outcomes in patients presenting with ST-segment elevation myocardial infarction.* *Catheter Cardiovasc Interv*, 2022. **100**(4): p. 520-529.
  34. Gargiulo, G., et al., *Impact of Sex on Comparative Outcomes of Radial Versus Femoral Access in Patients With Acute Coronary Syndromes Undergoing Invasive Management: Data From the Randomized MATRIX-Access Trial.* *JACC Cardiovasc Interv*, 2018. **11**(1): p. 36-50.

35. Doan, T.N., et al., *Survival after Resuscitated Out-of-Hospital Cardiac Arrest in Patients with Paramedic-Identified ST-Segment Elevation Myocardial Infarction Treated with Primary Percutaneous Coronary Intervention*. Prehosp Emerg Care, 2021: p. 1-8.
36. Fosbol, E.L., et al., *The impact of a statewide pre-hospital STEMI strategy to bypass hospitals without percutaneous coronary intervention capability on treatment times*. Circulation, 2013. **127**(5): p. 604-12.

## Figure Legend

Figure 1. Study inclusion flow diagram. PCI – Percutaneous Coronary Intervention, STEMI – ST-segment elevation myocardial infarction, Salvage PCI – Out of hospital cardiac arrest with emergency intubation.

Figure 2. Comparison of geometric mean and median critical timepoints of ambulance transported STEMI patients undergoing primary PCI for STEMI. FMC – First Medical Contact. Pre-Act – Prehospital Activation. Prehospital activation cohort highlighted in blue. No prehospital activation cohort highlighted in green. Median and geometric mean times were similar across groups. Median time difference was 9 minutes shorter symptom onset to FMC, 5 minutes longer FMC to door time, and 52 minutes shorter DTB time with prehospital activation.

Figure 3. Adjusted cumulative hazard estimates for cardiovascular mortality with 95% confidence intervals by prior-hospital notification (PHN) status. Adjusted for age, sex, cardiac arrest pre-PCI, regional hospital and out of hours presentation.

Figure 4. Comparison of prehospital activation strategies between the Queensland and Mission Lifeline PRE-ACT strategies. FMC – First Medical Contact, ECG – Electrocardiograph, PCI – Percutaneous Coronary Intervention, STEMI – ST-segment Elevation Myocardial Infarction, CCL – Cardiac catheterisation laboratory.

Table 1: Summary statistics for patient characteristics by prehospital activation pathway

Variable	Category	Total	No Prehospital Activation	Prehospital Activation	p-value
		(n=2498)	(n=666)	(n=1832)	
Age <sup>a</sup> (years)		62.2 (12.4)	62.8 (13.5)	62.0 (11.9)	0.170
Male <sup>b</sup>		1,978 (79.2%)	507 (76.1%)	1,471 (80.3%)	0.023
Weight <sup>c</sup> (kg)		84 (72-95)	84 (70-95)	83 (73-95)	0.400
BMI <sup>b</sup> (kg/m <sup>2</sup> )		27.7 (24.8-31.0)	27.5 (24.6-31.0)	27.7 (24.8-31.0)	0.510
Year of admission <sup>b</sup>					0.072
	2017	617 (24.7%)	189 (28.4%)	428 (23.4%)	
	2018	583 (23.3%)	153 (23.0%)	430 (23.5%)	
	2019	587 (23.5%)	145 (21.8%)	442 (24.1%)	
	2020	711 (28.5%)	179 (26.9%)	532 (29.0%)	
Geography					<0.001
	Regional	1,096 (43.9%)	385 (35.1%)	711 (64.9%)	
	Metropolitan	1,402 (56.1%)	281 (20.0%)	1,121 (80.0%)	
<b>Presentation characteristics</b>					
Anterior infarction <sup>b</sup>		982 (39.3%)	269 (40.4%)	713 (38.9%)	0.510
Multi-vessel disease <sup>b</sup>		764 (30.6%)	196 (29.4%)	568 (31.0%)	0.447
Multi-vessel PCI <sup>b</sup>		136 (5.4%)	38 (5.7%)	98 (5.4%)	0.732
Arterial approach <sup>b</sup>					0.057
	Radial	1,793 (71.8%)	497 (74.6%)	1,296 (70.7%)	
	Femoral	705 (28.2%)	169 (25.4%)	536 (29.3%)	
Stent type <sup>b</sup>					0.200
	No stent	152 (6.1%)	41 (6.2%)	111 (6.1%)	
	Bare metal	245 (9.8%)	77 (11.6%)	168 (9.2%)	
	Drug eluting	2,101 (84.1%)	548 (82.3%)	1,553 (84.8%)	
Out of hours <sup>b</sup>		1528 (61.2%)	455 (68.3%)	1073 (58.6%)	<0.001
Weekend <sup>b</sup>		708 (28.3%)	205 (30.8%)	503 (27.5%)	0.106
Cardiac arrest pre- PCI <sup>b</sup>		139 (5.6%)	59 (8.9%)	80 (4.4%)	<0.001
Temporary pacing <sup>b</sup>		38 (1.5%)	14 (2.1%)	24 (1.3%)	0.154
Intra-Aortic balloon pump <sup>b</sup>		48 (1.9%)	14 (2.1%)	34 (1.9%)	0.690
Peri-procedure CPR <sup>b</sup>		21 (0.8%)	7 (1.1%)	14 (0.8%)	0.489
<b>Cardiovascular history and risk factors<sup>b</sup></b>					
Previous MI		142 (5.7%)	36 (5.4%)	106 (5.8%)	0.713
Previous CABG		33 (1.3%)	10 (1.5%)	23 (1.3%)	0.636
Previous PCI		229 (9.2%)	64 (9.6%)	165 (9.0%)	0.649
Diabetes		525 (21.0%)	157 (23.6%)	368 (20.1%)	0.060
Hypertension		865 (34.6%)	226 (33.9%)	639 (34.9%)	0.649
Dyslipidaemia		743 (29.7%)	164 (24.6%)	579 (31.6%)	<0.001
Any smoking history		1,654 (66.2%)	430 (64.6%)	1,224 (66.8%)	0.281
Current smoker		958 (38.4%)	252 (37.8%)	706 (38.5%)	0.738
LVEF <sup>a</sup> (n=1847)		47.7 (11.6)	47.3 (12.6)	47.8 (11.3)	0.357

Summary statistics are <sup>a</sup>mean (SD) with p-value derived from Student's t-test, <sup>b</sup>n(%) with p-value derived from Pearson's chi-square test or <sup>c</sup>median (IQR) with p-value from Wilcoxon's rank-sum test. BMI – Body Mass Index, PCI – Percutaneous Coronary Intervention, CPR – Cardio-Pulmonary Resuscitation, MI – Myocardial Infarction, CABG – Coronary Artery Bypass Grafting, LVEF – Left Ventricular Ejection Fraction.

Table 2: Comparison of summary statistics<sup>a</sup> for STEMI performance measures by prehospital activation pathway

<b>Variable</b>	<b>Total (n=2498)</b>	<b>No Prehospital Activation (n=666)</b>	<b>Prehospital Activation (n=1832)</b>	<b>p- value</b>
Symptom onset to FMC (minutes)	51 (26-111)	58 (29-126)	49 (26-106)	0.004
FMC to FDECG (minutes)	7 (4-15)	13 (5-52)	7 (4-11)	<0.001
FMC to door (minutes)	55 (45-67)	51 (40-64)	56 (47-67)	<0.001
FMC to balloon (minutes)	101 (84-127)	140 (115-176)	93 (80-109)	<0.001
Symptom onset to balloon (minutes)	165 (128-238)	217 (168-295)	150 (121-208)	<0.001
Door to table (minutes)	18 (9-40)	60 (46-85)	12 (7-22)	<0.001
Table to balloon (minutes)	24 (19-30)	25 (20-31)	23 (19-29)	<0.001
DTB (minutes)	42 (29-67)	86 (68-113)	34 (26-46)	<0.001
FDECG to balloon (minutes)	87 (73-108)	109 (81-139)	83 (72-98)	<0.001
FMC to balloon<90Mins	833 (33.3%)	52 (7.8%)	781 (42.6%)	<0.001
FDECG to balloon<90Mins	1,363 (54.6%)	222 (33.3%)	1,141 (62.3%)	<0.001
DTB<60Mins	1,752 (70.1%)	107 (16.1%)	1,645 (89.8%)	<0.001
IH DTB (minutes)	33 (25-52)	90 (75-118)	34 (26-46)	<0.001
OH DTB (minutes)	47 (33-77)	74 (54-105)	39 (30-50)	<0.001
IH DTB<60Mins	781 (80.5%)	70 (33.2%)	711 (93.7%)	<0.001
OH DTB<60Mins	971 (63.5%)	37 (8.1%)	934 (87.0%)	<0.001

<sup>a</sup>Summary statistics are median (IQR) with p-value from Wilcoxon's rank-sum test. FMC - First Medical Contact, FDECG - First Diagnostic Electrocardiograph, DTB - Door to Balloon.

Table 3: Summary statistics for variables of interest by 1-Year cardiovascular mortality status

Variable	Total Patients (n=2498)	No Cardiovascular Death (n=2369)	Cardiovascular Death (n=105)	p-value
Age <sup>a</sup> (years)	62.2 (12.4)	61.8 (12.2)	71.1 (13.8)	<0.001
Male <sup>b</sup>	1,978 (79.2%)	1,900 (79.4%)	78 (74.0%)	0.208
Weight <sup>c</sup> (kg)	84.0 (72.0-95.0)	84.0 (73.0-95.0)	80.0 (67.5-90.5)	0.013
BMI <sup>c</sup> (kg/m <sup>2</sup> )	27.7 (24.8-31.0)	27.7 (24.8-31.0)	26.6 (23.9-30.7)	0.103
Previous MI <sup>b</sup>	142 (5.7%)	137 (5.7%)	5 (4.8%)	0.677
Previous PCI <sup>b</sup>	229 (9.2%)	214 (8.9%)	15 (14.3%)	0.063
Previous CABG <sup>b</sup>	33 (1.3%)	32 (1.3%)	1 (1.0%)	0.735
Diabetes <sup>b</sup>	525 (21.0%)	494 (20.6%)	31 (29.5%)	0.029
Hypertension <sup>b</sup>	865 (34.6%)	822 (34.4%)	43 (41.0%)	0.164
Dyslipidaemia <sup>b</sup>	743 (29.7%)	718 (30.0%)	25 (23.8%)	0.174
Current smoker <sup>b</sup>	958 (38.4%)	926 (38.7%)	31 (30.5%)	0.090
Radial access <sup>b</sup>	1793 (71.8%)	1729 (72.3%)	64 (61.0%)	0.012
Drug eluting stent <sup>b</sup>	2100 (84.1%)	2023 (84.5%)	77 (73.3%)	0.002
Anterior infarction <sup>b</sup>	982 (39.3%)	916 (38.3%)	66 (62.9%)	<0.001
Cardiac arrest pre PCI <sup>b</sup>	139 (5.6%)	123 (5.1%)	16 (15.2%)	<0.001
Multi-vessel disease <sup>b</sup>	764 (30.6%)	720 (30.1%)	44 (41.9%)	0.010
LVEF <sup>a</sup> (n=1847)	48 (12)	48 (11)	36 (14)	<0.001
Regional hospital <sup>b</sup>	1,096 (43.9%)	1,046 (43.7%)	50 (47.6%)	0.624
Out of hours <sup>b</sup>	1,528 (61.2%)	1,458 (60.9%)	70 (66.7%)	0.238
Weekend presentation <sup>b</sup>	708 (28.3%)	684 (28.6%)	24 (22.9%)	0.203
Prehospital activation <sup>b</sup>	1832 (73.3%)	1784 (74.6%)	48 (45.7%)	<0.001
DTB <sup>c</sup> (mins)	42 (29-67)	41 (29-65)	68 (38-94)	<0.001
FMC to balloon <sup>c</sup> (mins)	101 (84-127)	100 (84-125)	128 (99-160)	<0.001
FDECG to balloon <sup>c</sup> (mins)	87 (73-108)	86 (73-106)	108 (87-140)	<0.001
STB <sup>c</sup> (mins)	165 (128-238)	163 (127-237)	191 (146-260)	0.005

Summary statistics are <sup>a</sup> mean (SD) with p-value derived from Student's t-test, <sup>b</sup> n(%) with p-value derived from Pearson's chi-square test, or <sup>c</sup> median (IQR) with p-value from Wilcoxon's rank-sum test. BMI – Body Mass Index, MI – Myocardial Infarction, PCI – Percutaneous Coronary Intervention, CABG – Coronary Artery Bypass Graft, LVEF – Left Ventricular Ejection Fraction, DTB – Door to Balloon, FMC – First Medical Contact, FDECG – First Diagnostic Electrocardiograph, STB – Symptom to Balloon.



Table 4: Mortality outcomes and logistic regression modelling for the effects of prehospital activation on 1-year cardiovascular mortality

<b>Outcome Variable</b>	<b>Total</b>	<b>No Prehospital Activation</b>	<b>Prehospital Activation</b>	<b>p-value</b>
	<b>(n=2498)</b>	<b>(n=666)</b>	<b>(n=1832)</b>	
30 Day All-Cause Mortality <sup>a</sup>	74 (3.0%)	44 (6.6%)	30 (1.6%)	<0.001
1 Year All-Cause Mortality <sup>a</sup>	130 (5.2%)	68 (10.2%)	62 (3.4%)	<0.001
1 Year CV Mortality <sup>a</sup>	105 (4.2%)	57 (8.6%)	48 (2.6%)	<0.001

<b>Exposure Variable</b>	<b>Category</b>	<b>Unadjusted effect</b>		<b>Direct effect<sup>b</sup></b>		<b>Total effect<sup>b</sup></b>	
		<b>OR (95 CI)</b>	<b>p-value</b>	<b>OR (95 CI)</b>	<b>p-value</b>	<b>OR (95 CI)</b>	<b>p-value</b>
Prehospital activation	Yes	Reference		Reference		Reference	
	No	3.5 (2.3-5.2)	<0.001	2.3 (1.5-3.7)	<0.001	3.0 (2.0-4.6)	<0.001
Age (years)	<66	Reference		Reference		Reference	
	65-<75	1.1 (0.7-2.0)	0.738	1.1 (0.6-2.0)	0.721	1.2 (0.7-2.1)	0.569
	≥75	5.3 (3.4-8.3)	<0.001	5.3 (3.3-8.4)	<0.001	5.7 (3.6-9.1)	<0.001
Cardiac arrest pre-PCI	No	Reference		Reference		Reference	
	Yes	3.3 (1.9-5.8)	<0.001	3.2 (1.8-5.9)	<0.001	3.5 (1.9-6.3)	<0.001
Out of hours presentation	Yes	Reference		Reference		Reference	
	No	0.8 (0.5-1.2)	0.239	0.9 (0.6-1.4)	0.602	0.8 (0.5-1.3)	0.335
Sex	Female	Reference		Reference		Reference	
	Male	0.8 (0.5-1.2)	0.208	1.1 (0.7-1.8)	0.703	1.1 (0.7-1.7)	0.777
Regional hospital	No	Reference		Reference		Reference	
	Yes	1.2 (0.8-1.7)	0.430	0.9 (0.6-1.4)	0.731	0.8 (0.6-1.3)	0.388
FDECG to balloon (mins)	<90	Reference		Reference			
	90-<120	1.5 (0.9-2.5)	0.130	1.2 (0.7-2.0)	0.559		
	≥120	4.3 (2.8-6.9)	<0.001	2.1 (1.2-3.7)	0.006		

<sup>a</sup>Summary statistics are n (%) with p-value derived from Pearson's chi-square test. CV – Cardiovascular, PCI – Percutaneous coronary intervention, FDECG – First Diagnostic Electrocardiograph. <sup>b</sup>Note that inference should be limited to the exposure of interest; it is not appropriate to interpret the effects of other covariates in these multivariable models.

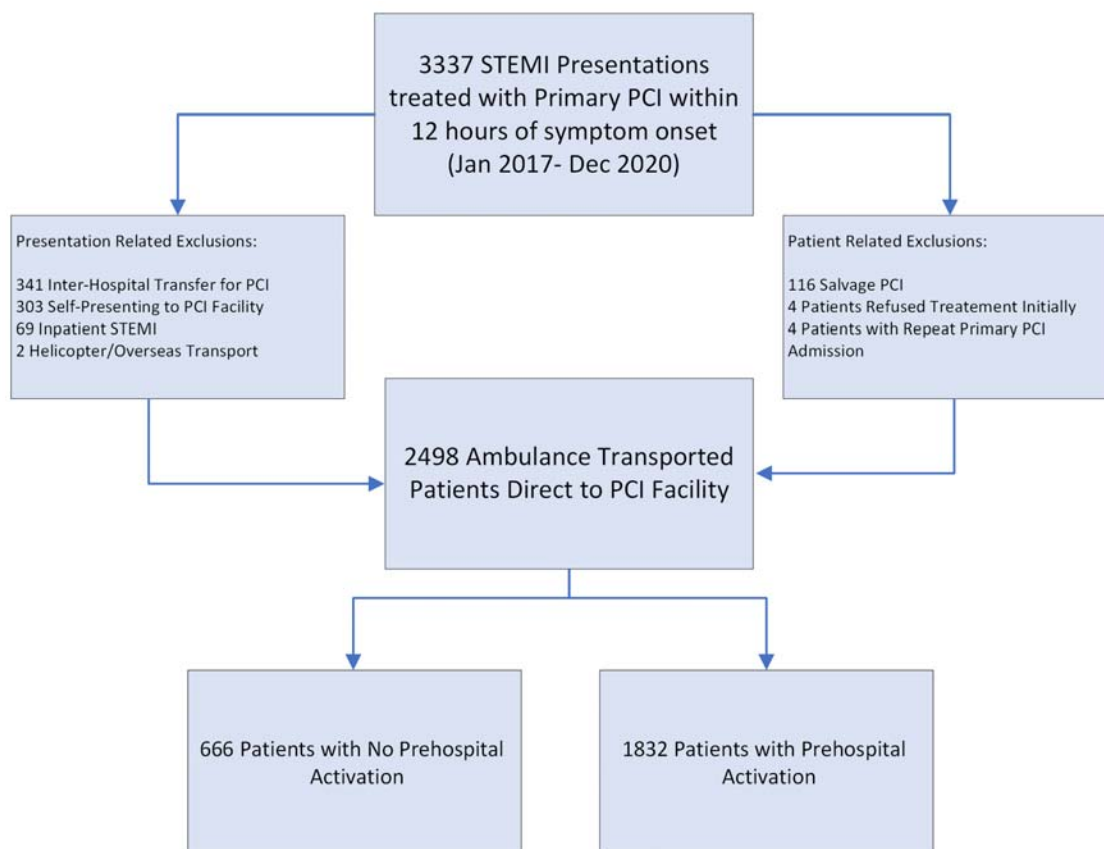


Figure 1. Study inclusion flow diagram. PCI – Percutaneous Coronary Intervention, STEMI – ST-segment elevation myocardial infarction, Salvage PCI – Out of hospital cardiac arrest with emergency intubation.

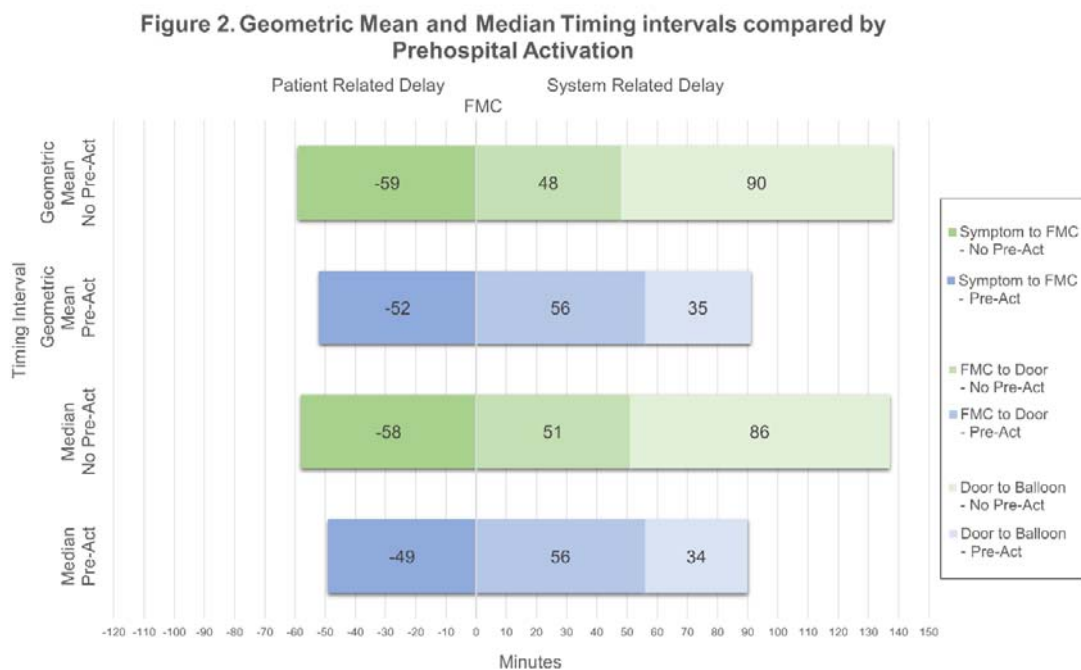


Figure 2. Comparison of geometric mean<sup>a</sup> and median critical timepoints of ambulance transported STEMI patients undergoing Primary PCI for STEMI. FMC – First Medical Contact. Pre-Act – Prehospital Activation. Prehospital activation cohort highlighted in blue. No Prehospital activation cohort highlighted in green. Median and geometric mean times were similar across groups. Median time difference was 9 minutes shorter symptom onset to FMC, 5 minutes longer FMC to door time, and 52 minutes shorter DTB time with prehospital activation. <sup>a</sup>The geometric or multiplicative mean is defined as the nth root of the product of n values.

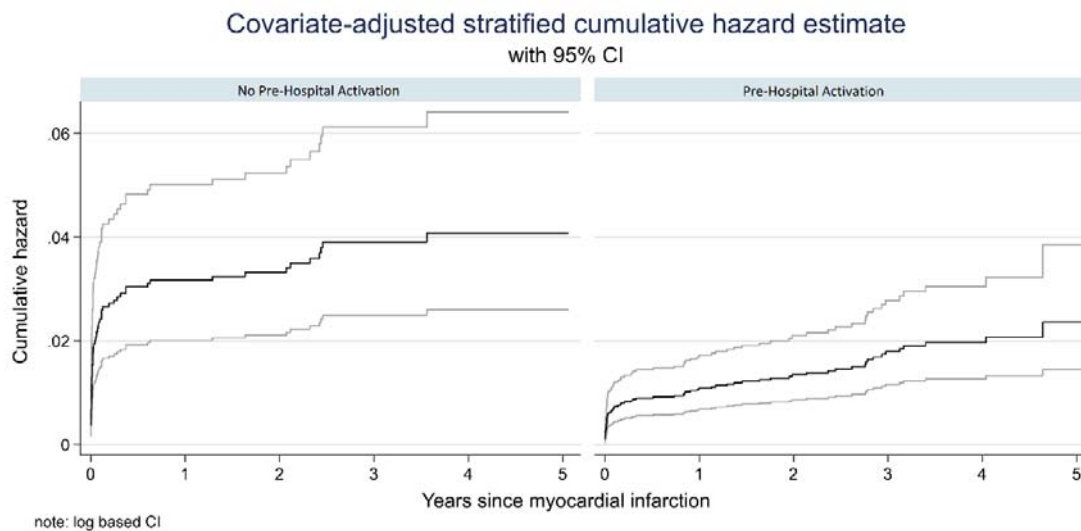


Figure 3. Adjusted cumulative hazard estimates for cardiovascular mortality with 95% confidence intervals by prior-hospital notification (PHN) status. Adjusted for age, sex, cardiac arrest pre-PCI, regional hospital and out of hours presentation.

<b>QUEENSLAND PREHOSPITAL ACTIVATION STRATEGIES</b>	<b>MISSION LIFELINE PRE-ACT PREHOSPITAL ACTIVATION STRATEGIES</b>
Prehospital ECG within 10mins of FMC	Acquiring prehospital ECGs
Paramedic interpretation of prehospital ECG with standardised state-wide prehospital PCI referral checklist	Paramedic interpretation of the prehospital ECG and clinical presentation to consider activation of the CCL team from the field
Non-PCI facility bypass when STEMI suspected	Establishing EMS destination policies and protocols that bypass hospitals without PCI capabilities in favor of a STEMI Receiving Center when STEMI is suspected in the field on the basis of the prehospital ECG and clinical presentation
Direct telephone consultation and PCI referral to interventional cardiologist on call	Transmission of the prehospital ECG to the emergency physician and/or cardiologist for potential activation of the CCL team before hospital arrival
Prehospital PCI medication given by ambulance officers at time of referral acceptance	-
CCL team activated only by interventional cardiologist.	Direct activation of the CCL by the Emergency Department
On-call team available within 30mins of activation	-
Direct transfer to CCL with Emergency Department bypass	If STEMI is strongly suspected, consideration of taking patients directly to the CCL without prior admission to the Emergency Department, when appropriate

Figure 4. Comparison of prehospital activation strategies between the Queensland and Mission Lifeline PRE-ACT strategies. Adapted from Kontos et al [6]. FMC – First Medical Contact, ECG – Electrocardiograph, PCI – Percutaneous Coronary Intervention, STEMI – ST-segment Elevation Myocardial Infarction, CCL – Cardiac catheterisation laboratory.

Supplement 1. Queensland Ambulance Service – Autonomous primary PCI referral Checklist.



### Autonomous pPCI Referral Checklist (April, 2018)

PATIENT / CASE DETAILS			
Surname		Given Name	
Age		Weight	
Case Date		Case Number	

INDICATIONS FOR pPCI REFERRAL – if the answer is NO or UNSURE to ANY of the following, do NOT refer the patient for pPCI and do NOT administer the patient any heparin, ticagrelor or clopidogrel.	Yes	No	Unsure
Located < 60 minutes transport time (from time of first STEMI 12-Lead ECG) to a QAS approved pPCI capable hospital?			
GCS = 15?			
Classic ongoing ischaemic chest pain < 12 hours in duration? Note: Atypical chest pain is excluded.			
12-Lead ECG with persistent ST-elevation $\geq 1$ mm in at least two contiguous limb leads AND/OR $\geq 2$ mm in at least two contiguous chest leads V <sub>1</sub> -V <sub>6</sub> ?			
Normal QRS width (< 0.12 seconds) OR right bundle branch block identified on the 12-Lead ECG?			
CONTRAINDICATIONS FOR pPCI REFERRAL – if the answer is YES or UNSURE to ANY of the following questions, do NOT refer the patient for pPCI and do NOT administer the patient any heparin, ticagrelor or clopidogrel.	Yes	No	Unsure
History of serious systemic disease (e.g. advanced/terminal cancer, severe liver or kidney disease)?			
Resident of an aged care facility requiring significant assistance with activities of daily living?			
Acute myocardial infarction in the setting of trauma?			
ABSOLUTE CONTRAINDICATIONS FOR HEPARIN ADMINISTRATION – if the answer is YES or UNSURE to ANY of the following the patient may still be referred for pPCI however, do NOT administer the patient heparin.	Yes	No	Unsure
Known severe adverse reaction to heparin?			
Patient < 18 years?			
Active bleeding (excluding menses) OR clotting disorder (e.g. haemophilia)?			
Prior intracranial haemorrhage?			
Current use of anticoagulants (e.g. apixaban, dabigatran, rivaroxaban, warfarin)?			
RELATIVE CONTRAINDICATIONS FOR HEPARIN ADMINISTRATION – if the answer is YES or UNSURE to ANY of the following the paramedic must consult the interventional cardiologist prior to heparin administration.	Yes	No	Unsure
Uncontrolled hypertension (systolic BP > 180 mmHg AND/OR diastolic BP > 110 mmHg at any stage during current acute episode)?			
Known cerebral disease, in particular a malignant intracranial neoplasm OR arteriovenous malformation?			
Ischaemic stroke OR Transient Ischaemic Attack (TIA) within last 3 months?			
History of significant closed head / facial trauma within last 3 months?			
History of major trauma or surgery (including laser eye surgery) within last 6 weeks?			

### Autonomous pPCI Referral Checklist *(continued)*

CONTRAINDICATIONS FOR TICAGRELOR ADMINISTRATION – if the answer is YES or UNSURE to ANY of the following the patient may still be referred for pPCI however, do <b>NOT</b> administer the patient ticagrelor.	Yes	No	Unsure
Known severe adverse reaction to ticagrelor?			
Patient currently taking ticagrelor OR clopidogrel?			
Patient < 18 years?			
Active bleeding (excluding menses)?			
Prior intracranial haemorrhage?			
History of hepatic impairment?			
CONTRAINDICATIONS FOR CLOPIDOGREL ADMINISTRATION – if the answer is YES or UNSURE to ANY of the following the patient may still be referred for pPCI however, do <b>NOT</b> administer the patient clopidogrel.	Yes	No	Unsure
Known severe adverse reaction to clopidogrel?			
Patient currently taking clopidogrel OR ticagrelor?			
Patient < 18 years?			
Active bleeding (excluding menses)?			
Prior intracranial haemorrhage?			

CONSENT	
All patients eligible for Autonomous pPCI Referral <b>MUST</b> read (or have read to them) the following information and if consent is given the patient must sign the bottom section of this form.	
<p>It is likely that you are suffering a heart attack. I would like to refer you to an interventional cardiologist for a procedure to restore cardiac blood flow. If this procedure is able to be performed the interventional cardiologist may request the following medications be administered with your consent:</p> <ul style="list-style-type: none"> <li>• a drug which reduces new clot formation called heparin; <b>AND</b></li> <li>• either a drug called ticagrelor <b>OR</b> clopidogrel which will assist in maintaining cardiac blood flow.</li> </ul> <p>Heparin <b>AND</b> either ticagrelor <b>OR</b> clopidogrel can cause significant bleeding in a small number of patients however, the use of these drugs is supported by national and international cardiology guidelines.</p> <p><b>Medical Records:</b> I give permission for the QAS to access my hospital record for information relating to this procedure.</p>	
Patient signature	X .....
<b>PARAMEDIC DETAILS</b> I certify that I have completed the <i>Autonomous pPCI Referral Checklist</i> and the patient <b>has given / has not given</b> (circle appropriate response) consent for the administration of ticagrelor / clopidogrel (circle appropriate response) and heparin.	
Number	Signature

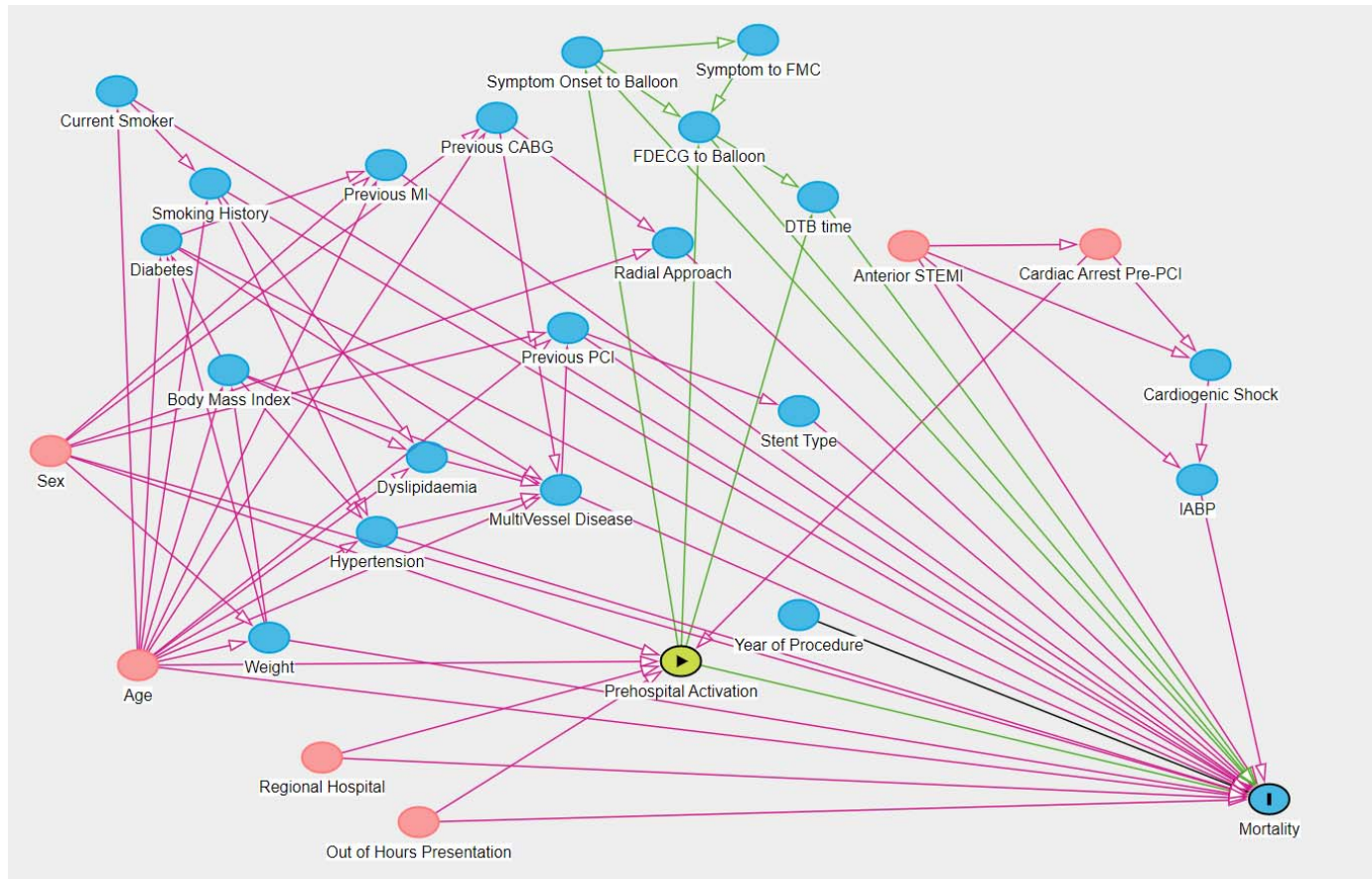
Supplement 2. Queensland Map demonstrating participating primary PCI centres



Queensland map demonstrating Metropolitan centres (TPCH- The Prince Charles Hospital, RBWH – Royal Brisbane and Women’s Hospital, PAH – Princess Alexandra Hospital) and Regional centres (CH – Cairns Hospital, TTH – Townsville Hospital, MBH – Mackay Base Hospital, SCUH – Sunshine Coast University Hospital, GCUH – Gold Coast University Hospital)



Supplement 3. Dagitty causal pathway diagram



MI – Myocardial Infarction, PCI – Percutaneous Coronary Intervention, CABG – Coronary Artery Bypass Graft, DTB – Door to Balloon, FMC – First Medical Contact, FDECG – First Diagnostic Electrocardiograph, STB – Symptom to Balloon, STEMI – ST-segment Elevation Myocardial Infarction, IABP – Intra-aortic Balloon Pump.