

1 **Impact of sarcopenic obesity on post-hepatectomy bile leakage for**
2 **hepatocellular carcinoma**

3

4 **Short title: Sarcopenic obesity on post-hepatectomy bile leakage**

5

6 Hikaru Hayashi[†], Akira Shimizu^{‡*}, Koji Kubota[§], Tsuyoshi Notake[§], Hitoshi Masuo[§],
7 Takahiro Yoshizawa[§], Kiyotaka Hosoda[§], Hiroki Sakai[§], Koya Yasukawa[§], and Yuji
8 Soejima[¶]

9

10 Division of Gastroenterological, Hepato-Biliary-Pancreatic, Transplantation and
11 Pediatric Surgery, Department of Surgery, Shinshu University School of Medicine,
12 Nagano, Japan.

13

14 *Corresponding author

15 E-mail: ashimizu@shinshu-u.ac.jp (AS)

16

17 [†] Conceptualization, Data curation, Formal analysis, Funding acquisition, Investigation,
18 Methodology, Project administration, Resources, Software, Supervision, Validation,

NOTE: This preprint reports new research that has not been certified by peer review and should not be used to guide clinical practice.

19 Visualization, Writing – original draft, Writing – review & editing

20

21 ‡ Conceptualization, Data curation, Investigation, Writing – original draft

22

23 § Data curation, Formal analysis

24

25 ¶ Conceptualization, Data curation, Project administration, Supervision, Writing –

26 original draft, Writing – review & editing

27

28

29

30

31

32

33

34

35

36

37 **Abstract**

38 **Background:** Post-hepatectomy bile leakage (PHBL) is a potentially fatal complication
39 that can arise after hepatectomy. Previous studies have identified obesity as a risk factor
40 for PHBL. Therefore, we investigated the impact of sarcopenic obesity on PHBL in
41 hepatocellular carcinoma (HCC) patients.

42 **Methods:** In total, we enrolled 409 patients who underwent hepatectomy without
43 bilioenteric anastomosis for HCC between January 2010 and August 2021. Patients were
44 grouped according to the presence or absence of PHBL. Patient characteristics including
45 body mass index and sarcopenic obesity were then analyzed for predictive factors for
46 PHBL.

47 **Results:** Among the 409 HCC patients included in this study, 39 developed PHBL. Male
48 gender, hypertension and cardiac disease, white blood cell counts, the psoas muscle area
49 and visceral fat area, and intraoperative blood loss were significantly increased in the
50 PHBL (+) group compared with the PHBL (-) group. Multivariate analysis showed that
51 independent risk factors for the occurrence of PHBL were intraoperative blood loss ≥ 370
52 mL and sarcopenic obesity.

53 **Conclusion:** Our results show that it is important to understand whether a patient is at
54 high risk for PHBL prior to surgery and especially to reduce intraoperative blood loss

55 during surgery for patients with risk factors for PHBL.

56

57 **Introduction**

58 Post-hepatectomy bile leakage (PHBL) is one of the most common and notable
59 complications after hepatectomy, occurring in approximately 5% of patients after
60 hepatectomy,[1, 2] and can lead to surgical site infection (SSI) or post-hepatectomy liver
61 failure (PHLF).[3] According to previous reports, factors such as liver cirrhosis, non-
62 anatomical hepatectomy, and obesity have been reported to be risk factors for PHBL.[4]

63 Recently, sarcopenic obesity has been reported to be associated with
64 postoperative outcomes for various carcinomas. Kim et al.[5] showed that sarcopenic
65 obesity was an independent risk factor for increased mortality in patients with gastric
66 cancer. Furthermore, Kobayashi et al.[6] reported that sarcopenic obesity was a
67 significant prognostic factor for poor overall survival and relapse-free survival after
68 hepatectomy for hepatocellular carcinoma (HCC). However, few studies have reported
69 the relationship between short-term outcomes, especially PHBL, and sarcopenic obesity
70 after hepatectomy for HCC.

71 The purpose of this study was to evaluate the impact of sarcopenic obesity on
72 the occurrence of PHBL after hepatectomy for HCC.

73

74 **Material and methods**

75 In total, 409 patients who underwent hepatectomy without bilioenteric
76 anastomosis for HCC between January 2010 and August 2021 were enrolled in this study.

77 Patients were categorized into the following two groups on the basis of the presence or
78 absence of PHBL: PHBL (+) and PHBL (-). Patient characteristics and relevant
79 clinicopathological variables, surgical details, and short-term outcomes were recorded.

80 This study was approved by the Biological and Medical Research Ethics Committee of
81 Shinshu University School of Medicine (approval no. 5701) and was conducted in
82 accordance with the principles of the Declaration of Helsinki. Due to the retrospective
83 property of this study and absence of invasive interventions, the requirement for written
84 consent was waived by the review board, and consent was obtained through an opt-out
85 method. The data was analyzed anonymously on the basis of medical records.

86

87 **Perioperative management**

88 In this study, hepatectomies were performed by several surgeons. Parenchymal
89 transection was performed using an ultrasonic dissector and/or the clamp-crushing
90 technique. The intermittent Pringle maneuver (PM) was routinely used to control

91 intraoperative blood loss for 15 min, followed by 5 min of reperfusion; this process was
92 repeated as needed. Abdominal drains were routinely placed along the cut surface of the
93 liver. Postoperatively, bilirubin concentrations in the drainage fluid were routinely
94 measured twice per week for surveillance of bile leakage. Furthermore, for several days
95 after surgery, the presence or absence of fluid collection around the site of hepatectomy
96 was checked every day by ultrasonography. For PHBL, additional percutaneous drainage
97 or exchanging drain tubes were performed as needed. The end of follow-up was
98 December 2021 or the time of discharge.

99

100 **Definitions**

101 Pathological findings were evaluated in accordance with the American Joint
102 Committee on Cancer Staging Manual, 7th edition[7] (AJCC), and liver cirrhosis was
103 defined as a fibrosis score of 4 using the new Inuyama classification[8]. Postoperative
104 complications were graded using the Clavien–Dindo classification.[9] PHLF and PHBL
105 were diagnosed and graded according to the criteria of the International Study Group of
106 Liver Surgery.[10, 11] Major hepatectomy was defined as resection of three or more
107 Couinaud’s segments of the liver. Anatomical resection included Couinaud’s
108 segmentectomy, sectionectomy, hemihepatectomy, and trisectionectomy.

109 Multidetector-row computed tomography (CT) was performed within 4 weeks
110 before surgery for diagnostic and staging purposes and was used to evaluate sarcopenia,
111 which was defined in accordance with the international consensus[12] as a skeletal
112 muscle index (SMI) of $<52.4 \text{ cm}^2/\text{m}^2$ for men and $<38.9 \text{ cm}^2/\text{m}^2$ for women. SMI was
113 defined as the total muscle area measured on an axial section through the third lumbar
114 vertebra (L3) when both pedicles were visible with a preestablished density threshold of
115 -29 to $+150$ Hounsfield units normalized for stature (Fig 1). Similarly, visceral fat area
116 (VFA) and subcutaneous fat area were also measured, and sarcopenic obesity was defined
117 by the VFA/SMI ratio.[13, 14] The cut-off value for sarcopenic obesity was defined in
118 accordance with the maximum sensitivities and specificities for predicting PHBL in
119 receiver operating characteristic (ROC) curve analysis; the cut-off value was 1.65. CT
120 scans were checked by two qualified physicians using a Synapse Vincent FN-7941
121 (Fujifilm, Tokyo, Japan).

122

123 **Statistical analysis**

124 All data were collected by a research assistant and stored in a computer database.
125 Statistical analysis was performed by the Chi-square test or Fisher's exact test to compare
126 categorical variables and by the Mann–Whitney U test to compare continuous variables.

127 ROC curve analyses for the predictive parameters were used to evaluate associations with
128 PHBL, with the Youden index used to determine cut-off values. Multivariate analysis
129 using a logistic regression model was conducted to identify independent significant
130 predictive factors for the occurrence of PHBL. All statistical analyses were performed
131 using JMP Pro 16.2 (SAS Institute Inc., Cary, NC, USA).

132

133 **Results**

134 **Patient characteristics**

135 During the study period, a total of 409 patients underwent hepatectomy. Among
136 all patients, 39 (9.5%) developed PHBL. A comparison of the patients' background
137 characteristics and preoperative comorbidities according to the presence or absence of
138 PHBL is summarized in Table 1. The ratio of male gender and the prevalence of
139 hypertension and cardiac disease were higher in the PHBL (+) group than in the PHBL
140 (−) group (89.7% vs. 74.3%; 74.4% vs. 53.0%; 28.2% vs. 13.0%; $P = 0.020$, 0.009 , and
141 0.018 , respectively). The indocyanine green retention rate at 15 min was lower in the
142 PHBL (+) group than in the PHBL (−) group (9.7% vs. 12.0%; $P = 0.026$). There were
143 no significant differences between the two groups regarding other variables, including
144 age, etiology, or Child–Pugh classification.

145

146 **Preoperative muscle and fat areas**

147 A comparison between the two groups regarding muscle and fat areas is shown
148 in Table 1. At the L3 level, the psoas muscle area and VFA were significantly larger in
149 the PHBL (+) group than in the PHBL (-) group (16.6 vs. 14.0 cm²; 135.3 vs. 96.8 cm²;
150 $P = 0.016$ and 0.003 , respectively). In contrast, SMI was comparable between the two
151 groups. Although the ratio of patients with sarcopenia was comparable, the ratio of
152 patients with sarcopenic obesity was significantly higher in the PHBL (+) group than in
153 the PHBL (-) group (89.7 vs. 59.7%; $P < 0.001$).

154

155 **Surgical outcomes**

156 Among the entire cohort, the median surgical duration time was 340 min (range:
157 82–990 min), the median inflow occlusion time was 60 min (range: 0–247 min), and the
158 median intraoperative blood loss was 300 mL (range: 0–5500 mL). The surgical outcomes
159 of each group are detailed in Table 1. No significant differences were observed between
160 the two groups with regards to the type of hepatectomy, the ratio of primary hepatectomy,
161 or anatomical hepatectomy. Additionally, there was no significant difference in the ratio
162 of medial sectionectomy or central bisectionectomy. Furthermore, surgical duration and

163 inflow occlusion times were comparable between the two groups. However,
164 intraoperative blood loss was greater in the PHBL (+) group than in the PHBL (-) group
165 (430 vs. 278 mL, $P = 0.002$). As a result, the percentage of intraoperative blood
166 transfusions tended to be higher in the PHBL (+) group (25.6 vs. 13.8%; $P = 0.065$).

167

168 **Histopathological findings**

169 Histopathological features are summarized in Table 2. The prevalence of liver
170 cirrhosis was comparable between the two groups ($P = 0.074$). In contrast, the ratio of
171 multiple tumors tended to be lower in the PHBL (+) group than in the PHBL (-) group
172 (15.4 vs. 27.0, $P = 0.097$). Furthermore, the pathological AJCC staging tended to be lower
173 in the PHBL (+) group ($P = 0.071$). There were no significant differences between the
174 two groups in maximum tumor diameter, the ratio of microvascular invasion, or the R0
175 resection rate.

176

177 **Short-term outcomes**

178 Regarding short-term outcomes (Table 3), 225 patients (55.0%) developed
179 postoperative complications, including 70 (17.1%) with complications of grade III or
180 higher.[9] One patient (0.2%) among the entire cohort died due to grade C PHLF. In the

181 PHBL (+) group, 12 patients (30.8%) developed grade B PHBL and 27 (69.2%)
182 developed grade A PHBL, while no patients developed grade C PHBL. As for PHLF, all
183 cases of PHLF in the PHBL group were grade A, and there was no significant difference
184 between the two groups in the occurrence of PHLF. Moreover, incidences of intra-
185 abdominal infection or pleural effusion were comparable between the two groups.
186 However, postoperative hospital stays were longer in the PHBL (+) group (14 vs. 12 d; P
187 = 0.036).

188

189 **Risk factors for PHBL**

190 The cut-off value for intraoperative blood loss was defined using ROC curve
191 analysis, as well as sarcopenic obesity. The independent risk factors for the occurrence of
192 PHBL were intraoperative blood loss ≥ 370 mL (odds ratio [OR]: 2.25; 95% confidence
193 interval [CI]: 1.10–4.59; $P = 0.026$) and sarcopenic obesity (OR: 4.08; 95% CI: 1.37–
194 12.1; $P = 0.011$) (Table 4). Furthermore, if the analysis was limited to only patients with
195 primary hepatectomy, sarcopenic obesity (OR: 3.61; 95% CI: 1.21–10.8; $P = 0.022$) was
196 the only independent risk factor for the occurrence of PHBL (data not shown).

197 A scatter diagram of the correlation between intraoperative blood loss and
198 sarcopenic obesity (VFA/SMI level) was created (Fig 2). Spearman's rank correlation

199 analysis showed low correlation between the amount of intraoperative blood loss and the
200 VFA/SMI value ($\rho = 0.201$; $P < 0.001$). No patients with intraoperative blood loss <370
201 mL and without sarcopenic obesity developed PHBL (0 of 108 patients). In contrast,
202 patients with intraoperative blood loss ≥ 370 mL and sarcopenic obesity had the highest
203 ratio of the occurrence of PHBL among all combinations of these two parameters (17.8%,
204 21 of 118 patients). Additionally, ROC curve analysis of combined intraoperative blood
205 loss and sarcopenic obesity had a higher area under the curve value (0.708; $P = 0.013$)
206 than either parameter alone (Fig 3).

207

208 **Discussion**

209 Recently, the target of hepatectomy has been expanding, for example, for liver
210 metastasis of various carcinomas; hepatectomy has become of increasing importance
211 despite advances in drug therapy. PHBL is one of the most common postoperative
212 complications after hepatectomy. Although most PHBL can be cured by conservative
213 treatment, it can lead to PHLF or sepsis from an infection. Shehta et al.[15] reported that
214 PHBL occurred in 5.8% of hepatectomy patients, and the PHBL (+) group had higher
215 grades of PHLF. Furthermore, Lo et al.[16] showed that biliary complications including
216 PHBL developed in 8.1% of hepatectomy patients and that these complications carried

217 high risks for PHLF and mortality. In contrast, Okabayashi et al.[17] revealed that high
218 body mass index (BMI), high intraoperative blood loss, presence of PHBL, and poor
219 postoperative glucose control were risk factors for the occurrence of SSI from a
220 multivariate analysis. In the present study, no significant differences were observed in the
221 occurrence of PHLF and SSI between the PHBL (+) and PHBL (-) groups. This might
222 be attributed to close monitoring and early intervention and appropriate usage of
223 prophylactic antibiotics at our institute. The results of many previous studies indicate that
224 PHBL itself is associated with other postoperative complications after hepatectomy;
225 hence, it is desirable and reasonable to try to identify, before surgery, the population who
226 are at a high risk for PHBL, to improve postoperative outcomes.

227 Obesity is one of the main health concerns that needs to be solved, not only in
228 Japan, but also particularly in developed countries. Obesity is clearly related to lifestyle
229 diseases, such as hypertension and cardiovascular diseases, HCC from nonalcoholic
230 steatohepatitis and colorectal cancer.[18] For example, a large database retrospective
231 study[19] showed that obesity was an independent risk factor for colorectal cancer across
232 all age groups compared with the general population. BMI is the most common and
233 simple indicator of obesity. Almost all previous reports that have shown a relationship
234 between obesity and postoperative outcomes have been based on BMI. However, BMI

235 can be inaccurate at times because it depends on muscle mass as well as fat mass.
236 Therefore, we focused on sarcopenic obesity as a more objective and accurate indicator.
237 Sarcopenic obesity was an independent risk factor for the occurrence of PHBL in this
238 study, whereas BMI was not.

239 Sarcopenic obesity is a condition in which lean body mass is lost while fat mass
240 is preserved or even increased and is one of the indicators for patient nutritional
241 assessment.[20] Previous studies have suggested that sarcopenic obesity is a risk factor
242 for short- and long-term outcomes after surgery. For example, Runkel et al.[21] reported
243 that sarcopenic obesity was an independent risk factor for overall complications after
244 hepatectomy for colorectal liver metastases. As for the association of fat and PHBL, our
245 previous study[14] reported that sarcopenic obesity was an independent risk factor for the
246 occurrence of postoperative pancreatic fistula after pancreaticoduodenectomy. The
247 underlying reason was considered to be that the adipose tissue around the pancreatic duct
248 might complicate anastomosis, decrease local blood flow for wound healing, and produce
249 inflammatory cytokines that impede healing. Inflammatory cytokines produced by excess
250 adipose tissue can cause delayed biliary wound healing, leading to PHBL. Therefore, the
251 results of this study fit with existing data.

252 There are also several reports on the relationship between intraoperative bleeding

253 and PHBL. Wang et al.[22] reported that tumor size, type of tumor, surgical duration
254 time, blood loss, and blood transfusion were the independent risk factors for PHBL.
255 Intraoperative blood loss might cause liver damage and reduced blood flow around the
256 bile duct, resulting in bile leakage. Another possibility is that surgery with a wide surface
257 area for the incision exposes more bile ducts at the surface.[23] Hepatectomy with such
258 a wide surface area of the incision may increase intraoperative blood loss, and this study
259 might reflect this possibility. However, this study was a retrospective study, and the area
260 of the cut surface could not be measured accurately. Furthermore, as mentioned in the
261 results, no significant difference was observed in the type of hepatectomy, such as medial
262 sectionectomy or central bisectionectomy.

263 Occluding the hepatic inflow pedicle, also known as the Pringle maneuver (PM),
264 is a widely accepted method for reducing intraoperative blood loss. However, the PM
265 results in ischemia-reperfusion changes.[24] According to several animal studies,
266 ischemia-reperfusion injury owing to hilar vascular clamping can accelerate tumor
267 growth, stimulate tumor cell adhesion, and promote metastasis.[25] Furthermore,
268 previous reports have shown that PM duration for HCC was associated with postoperative
269 long-term outcomes.[26, 27] However, because of recent advances in surgical techniques,
270 PM is not needed in every operation. Maurer et al.[28] reported that major resection

271 without PM is feasible and safe and might reduce liver damage and failure. However,
272 deciding to perform PM during hepatectomy should be based on risk assessment and
273 operative difficulties. The appropriate intraoperative supportive techniques to complete
274 the scheduled operation with minimal intraoperative blood loss are important.

275 This study had several limitations. First, this was a single-center retrospective
276 study, and selection bias is possible. Second, the cut-off values for sarcopenic obesity and
277 intraoperative blood loss were defined in accordance with the maximum sensitivities and
278 specificities for predicting PHBL from ROC curve analysis. Therefore, this cut-off value
279 might not be applicable to other institutions. Despite these drawbacks, we believe that our
280 findings are of interest to surgeons because, to the best of our knowledge, this is the first
281 study to investigate the association between sarcopenic obesity and PHBL in HCC
282 patients.

283

284 **Conclusion**

285 Sarcopenic obesity and intraoperative blood loss were significant risk factors for
286 the occurrence of PHBL. It is important to preoperatively understand whether a patient is
287 at high or low risk for PHBL for early therapeutic intervention.

288

289 **Acknowledgments**

290 We thank James P. Mahaffey, PhD, from Edanz (<https://jp.edanz.com/ac>) for editing a
291 draft of this manuscript.

292

293 **Funding Statement**

294 The authors received no specific funding for this work.

295

296

297

298

299

300

301

302

303

304

305

306 **References**

- 307 1. Kaibori M, Shimizu J, Hayashi M, Nakai T, Ishizaki M, Matsui K, et al. Late-
308 onset bile leakage after hepatic resection. *Surgery*. 2015;157:37-44.
- 309 2. Sakamoto K, Tamesa T, Yukio T, Tokuhisa Y, Maeda Y, Oka M. Risk Factors
310 and Managements of Bile Leakage After Hepatectomy. *World J Surg*. 2016;40:182-9.
- 311 3. Sadamori H, Yagi T, Shinoura S, Umeda Y, Yoshida R, Satoh D, et al. Risk
312 factors for major morbidity after liver resection for hepatocellular carcinoma. *Br J Surg*.
313 2013;100:122-9.
- 314 4. Panaro F, Hacina L, Bouyabrine H, Al-Hashmi AW, Herrero A, Navarro F.
315 Risk factors for postoperative bile leakage: a retrospective single-center analysis of 411
316 hepatectomies. *Hepatobiliary Pancreat Dis Int*. 2016;15:81-6.
- 317 5. Kim J, Han SH, Kim HI. Detection of sarcopenic obesity and prediction of
318 long-term survival in patients with gastric cancer using preoperative computed
319 tomography and machine learning. *J Surg Oncol*. 2021;124:1347-55.
- 320 6. Kobayashi A, Kaido T, Hamaguchi Y, Okumura S, Shirai H, Yao S, et al.
321 Impact of Sarcopenic Obesity on Outcomes in Patients Undergoing Hepatectomy for
322 Hepatocellular Carcinoma. *Ann Surg*. 2019;269:924-31.
- 323 7. Edge SB, Compton CC. The American Joint Committee on Cancer: the 7th

- 324 edition of the AJCC cancer staging manual and the future of TNM. *Ann Surg Oncol.*
325 2010;17:1471-4.
- 326 8. Yamada G. [Histopathological characteristics and clinical significance of New
327 Inuyama Classification in chronic hepatitis B]. *Nihon Rinsho.* 2004;62 Suppl 8:290-2.
- 328 9. Clavien PA, Barkun J, de Oliveira ML, Vauthey JN, Dindo D, Schulick RD, et
329 al. The Clavien-Dindo classification of surgical complications: five-year experience.
330 *Ann Surg.* 2009;250:187-96.
- 331 10. Rahbari NN, Garden OJ, Padbury R, Brooke-Smith M, Crawford M, Adam R,
332 et al. Posthepatectomy liver failure: a definition and grading by the International Study
333 Group of Liver Surgery (ISGLS). *Surgery.* 2011;149:713-24.
- 334 11. Koch M, Garden OJ, Padbury R, Rahbari NN, Adam R, Capussotti L, et al.
335 Bile leakage after hepatobiliary and pancreatic surgery: a definition and grading of
336 severity by the International Study Group of Liver Surgery. *Surgery.* 2011;149:680-8.
- 337 12. Fearon K, Strasser F, Anker SD, Bosaeus I, Bruera E, Fainsinger RL, et al.
338 Definition and classification of cancer cachexia: an international consensus. *Lancet*
339 *Oncol.* 2011;12:489-95.
- 340 13. Tanaka K, Yamada S, Sonohara F, Takami H, Hayashi M, Kanda M, et al.
341 Pancreatic Fat and Body Composition Measurements by Computed Tomography are

- 342 Associated with Pancreatic Fistula After Pancreatectomy. *Ann Surg Oncol*.
343 2021;28:530-8.
- 344 14. Hayashi H, Shimizu A, Kubota K, Notake T, Masuo H, Yoshizawa T, et al. A
345 new fistula risk score using sarcopenic obesity and subcutaneous fat area for predicting
346 postoperative pancreatic fistula after pancreaticoduodenectomy. *J Hepatobiliary*
347 *Pancreat Sci*. 2022. doi: 10.1002/jhbp.1283.
- 348 15. Shehta A, Farouk A, Said R, Nakeeb AE, Aboelenin A, Elshobary M, et al.
349 Bile Leakage After Hepatic Resection for Hepatocellular Carcinoma: Does It Impact the
350 Short- and Long-term Outcomes? *J Gastrointest Surg*. 2022;26:2070-81.
- 351 16. Lo CM, Fan ST, Liu CL, Lai EC, Wong J. Biliary complications after hepatic
352 resection: risk factors, management, and outcome. *Arch Surg*. 1998;133:156-61.
- 353 17. Okabayashi T, Nishimori I, Yamashita K, Sugimoto T, Yatabe T, Maeda H, et
354 al. Risk factors and predictors for surgical site infection after hepatic resection. *J Hosp*
355 *Infect*. 2009;73:47-53.
- 356 18. Kim DS, Scherer PE. Obesity, Diabetes, and Increased Cancer Progression.
357 *Diabetes Metab J*. 2021;45:799-812.
- 358 19. Elangovan A, Skeans J, Landsman M, Ali SMJ, Elangovan AG, Kaelber DC, et
359 al. Colorectal Cancer, Age, and Obesity-Related Comorbidities: A Large Database

- 360 Study. *Dig Dis Sci*. 2021;66:3156-63.
- 361 20. Trouwborst I, Verreijen A, Memelink R, Massanet P, Boirie Y, Weijs P, et al.
362 Exercise and Nutrition Strategies to Counteract Sarcopenic Obesity. *Nutrients*. 2018;10.
363 21. Runkel M, Diallo TD, Lang SA, Bamberg F, Benndorf M, Fichtner-Feigl S.
364 The Role of Visceral Obesity, Sarcopenia and Sarcopenic Obesity on Surgical
365 Outcomes After Liver Resections for Colorectal Metastases. *World J Surg*.
366 2021;45:2218-26.
- 367 22. Wang J, Zhao JP, Wang JJ, Chai SS, Zhang YX, Zhang ZG, et al. The impact
368 of bile leakage on long-term prognosis in primary liver cancers after hepatectomy: A
369 propensity-score-matched study. *Asian J Surg*. 2020;43:603-12.
- 370 23. Nagano Y, Togo S, Tanaka K, Masui H, Endo I, Sekido H, et al. Risk factors
371 and management of bile leakage after hepatic resection. *World J Surg*. 2003;27:695-8.
- 372 24. Ezaki T, Seo Y, Tomoda H, Furusawa M, Kanematsu T, Sugimachi K. Partial
373 hepatic resection under intermittent hepatic inflow occlusion in patients with chronic
374 liver disease. *Br J Surg*. 1992;79:224-6.
- 375 25. van der Bilt JD, Kranenburg O, Borren A, van Hillegersberg R, Borel Rinkes
376 IH. Ageing and hepatic steatosis exacerbate ischemia/reperfusion-accelerated outgrowth
377 of colorectal micrometastases. *Ann Surg Oncol*. 2008;15:1392-8.

- 378 26. Liu S, Li X, Li H, Guo L, Zhang B, Gong Z, et al. Longer duration of the
379 Pringle maneuver is associated with hepatocellular carcinoma recurrence following
380 curative resection. *J Surg Oncol*. 2016;114:112-8.
- 381 27. Hao S, Chen S, Yang X, Wan C. Adverse impact of intermittent portal
382 clamping on long-term postoperative outcomes in hepatocellular carcinoma. *Ann R Coll*
383 *Surg Engl*. 2017;99:22-7.
- 384 28. Maurer CA, Walensi M, Kaser SA, Kunzli BM, Lotscher R, Zuse A. Liver
385 resections can be performed safely without Pringle maneuver: A prospective study.
386 *World J Hepatol*. 2016;8:1038-46.
- 387
- 388
- 389
- 390
- 391
- 392
- 393
- 394
- 395

396

397 **Figure legends**

398 **Fig 1. Computed tomography image analysis of a third lumbar vertebra.** Green area,
399 muscle; red area, visceral fat; blue area, subcutaneous fat. (a) A patient without sarcopenic
400 obesity. (b) A patient with sarcopenic obesity.

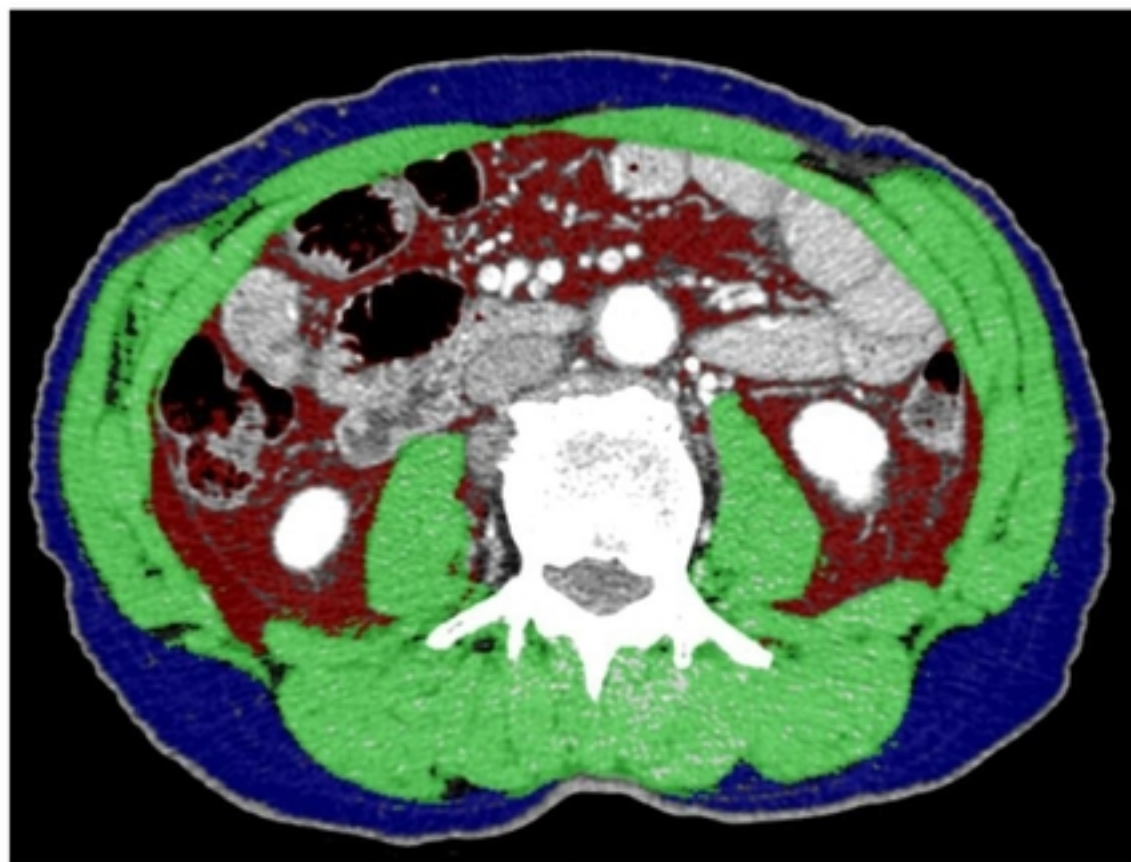
401

402 **Fig 2. Scatter diagram of the correlation between visceral fat area (VFA)/skeletal**
403 **muscle index (SMI) and intraoperative blood loss.** Coefficients (ρ) and *P*-values
404 were calculated using the Spearman's rank correlation analysis. Red circles indicate
405 patients with post-hepatectomy bile leakage (PHBL), and blue circles indicate patients
406 without PHBL.

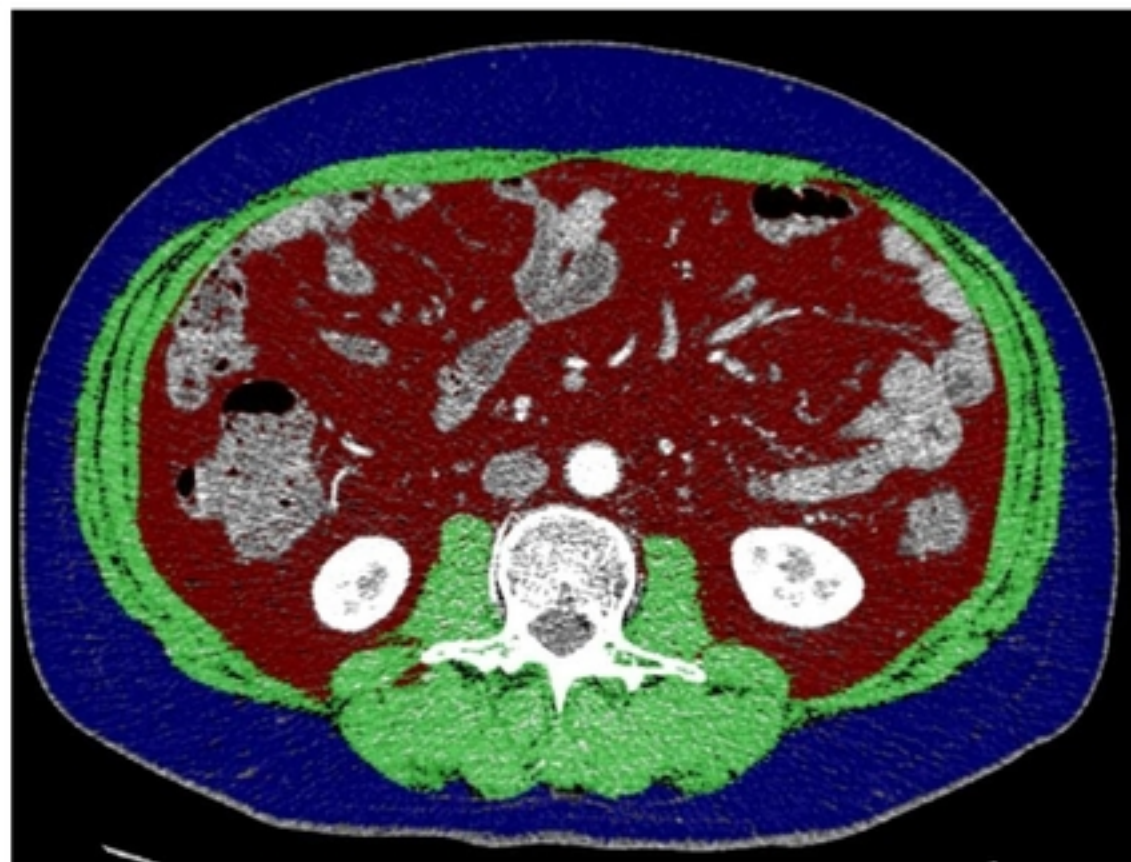
407

408 **Fig 3. Receiver operating characteristic (ROC) curve analysis for the occurrence of**
409 **PHBL.** Red, ROC curve of the combination of sarcopenic obesity and intraoperative
410 blood loss; green, ROC curve of sarcopenic obesity; blue, ROC curve of intraoperative
411 blood loss.

a



b



Subcutaneous fat area (SFA)



Visceral fat area (VFA)



Total muscle area (TMA)

Figure 1

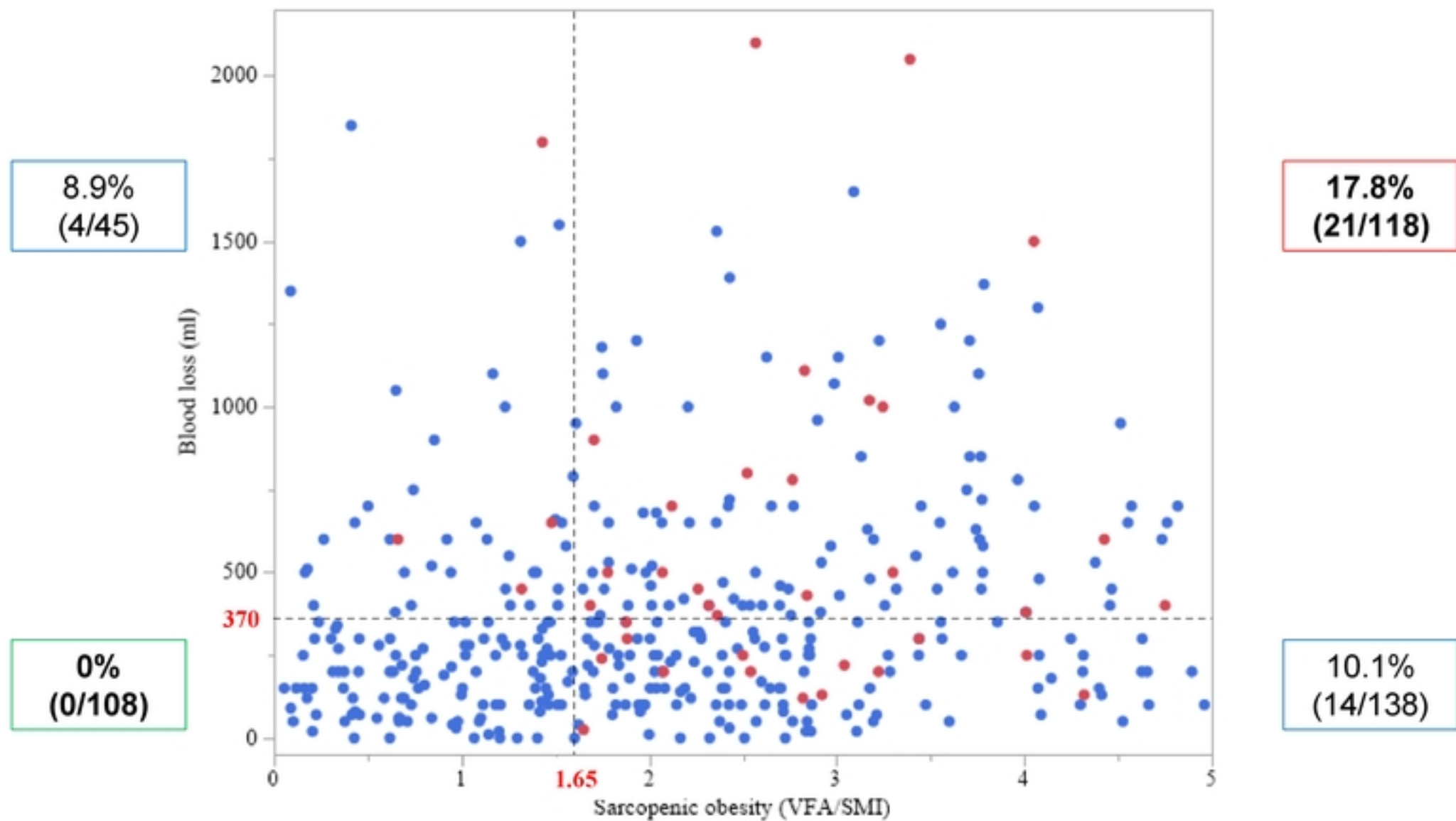
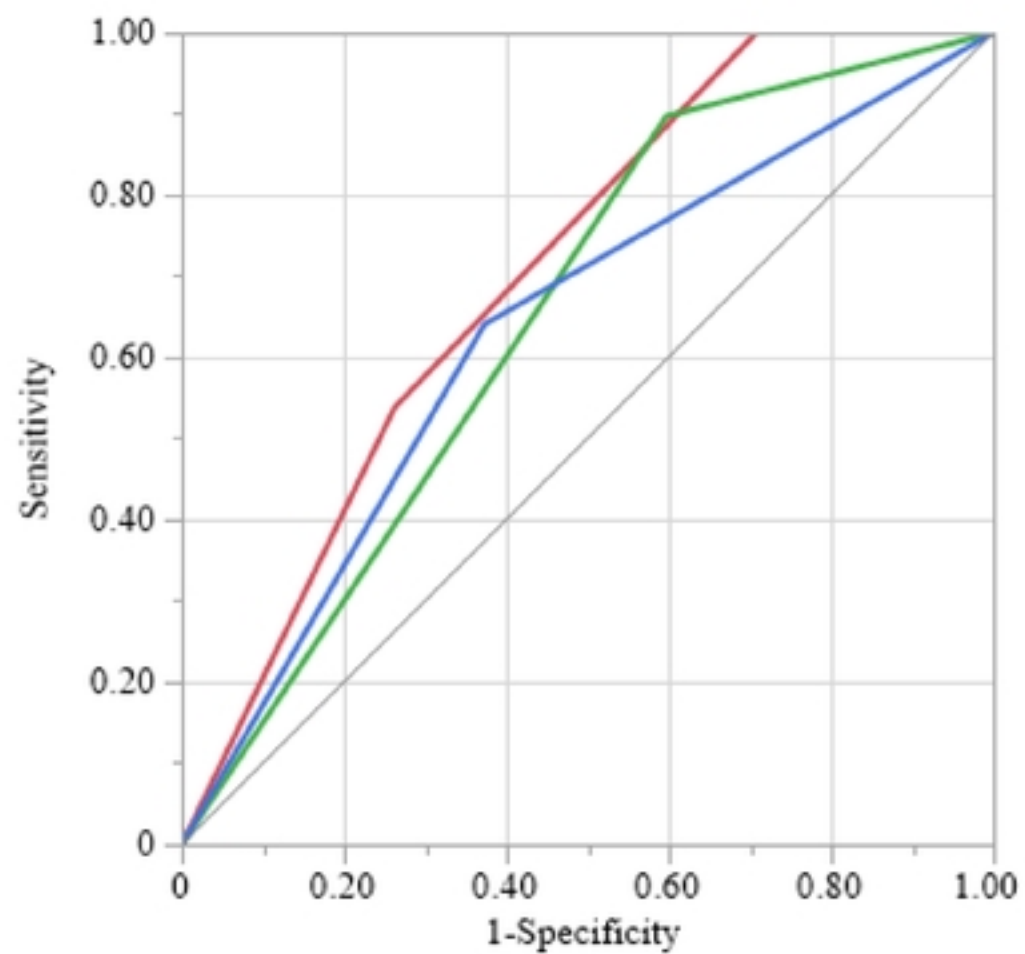


Figure 2



- Combination: AUC=0.708
- Sarcopenic obesity: AUC=0.650
- Blood loss: AUC=0.634

Figure 3