

1 **Polygenic risk score for ulcerative colitis predicts immune checkpoint inhibitor-**  
2 **mediated colitis**

3 Pooja Middha<sup>1</sup>, Rohit Thummalapalli<sup>2</sup>, Michael J. Betti<sup>3</sup>, Lydia Yao<sup>4</sup>, Zoe Quandt<sup>5,6</sup>,  
4 Karmugi Balaratnam<sup>7</sup>, Cosmin A. Bejan<sup>8</sup>, Eduardo Cardenas<sup>1</sup>, Christina J. Falcon<sup>9</sup>,  
5 David M. Faleck<sup>10</sup>, Princess Margaret Lung Group<sup>7</sup>, Matthew A. Gubens<sup>11,12</sup>, Scott  
6 Huntsman<sup>1</sup>, Douglas B. Johnson<sup>13</sup>, Linda Kachuri<sup>14,15</sup>, Khaleeq Khan<sup>7</sup>, Min Li<sup>1</sup>, Christine  
7 M. Lovly<sup>16</sup>, Megan H. Murray<sup>4</sup>, Devalben Patel<sup>7</sup>, Kristin Werking<sup>17</sup>, Yaomin Xu<sup>4</sup>, Luna Jia  
8 Zhan<sup>7</sup>, Justin M. Balko<sup>13</sup>, Geoffrey Liu<sup>18</sup>, Melinda C. Aldrich<sup>3</sup>, Adam J. Schoenfeld<sup>19</sup>,  
9 Elad Ziv<sup>1,20</sup>

10

11 <sup>1</sup> Department of Medicine, University of California San Francisco, San Francisco, CA, USA

12 <sup>2</sup> Department of Medicine, Memorial Sloan Kettering Cancer Center, New York, NY

13 <sup>3</sup> Department of Medicine, Division of Genetic Medicine, Vanderbilt University Medical Center,  
14 Nashville, TN, USA

15 <sup>4</sup> Department of Biostatistics, Vanderbilt University Medical Center, Nashville, TN, USA

16 <sup>5</sup> Division of Endocrinology and Metabolism, Department of Medicine, University of California  
17 San Francisco, San Francisco, CA, USA

18 <sup>6</sup> Diabetes Center, University of California San Francisco, San Francisco, CA, USA

19 <sup>7</sup> Princess Margaret Cancer Centre, Toronto, ON, Canada

20 <sup>8</sup> Department of Biomedical Informatics, Vanderbilt University Medical Center, Nashville, TN,  
21 USA

22 <sup>9</sup> Fiona and Stanley Druckenmiller Center for Lung Cancer Research, Memorial Sloan Kettering  
23 Cancer Center, New York, NY, USA

24 <sup>10</sup> Gastroenterology, Hepatology & Nutrition Service, Department of Medicine, Memorial Sloan  
25 Kettering Cancer Center, New York, NY, USA

26 <sup>11</sup> Medical Oncology, University of California San Francisco, San Francisco, CA, USA

27 <sup>12</sup> Department of Medicine, Weill Cornell Medical Center, New York, NY, USA

28 <sup>13</sup> Department of Medicine, Vanderbilt University Medical Center, Nashville, TN, USA.

29 <sup>14</sup> Department of Epidemiology and Population Health, Stanford University School of Medicine,  
30 Stanford, CA, USA

31 <sup>15</sup> Stanford Cancer Institute, Stanford University of Medicine, Stanford, CA, USA

32 <sup>16</sup> Department of Medicine, Division of Hematology and Oncology, Vanderbilt University Medical  
33 Center and Vanderbilt Ingram Cancer Center, Nashville, TN, USA

34 <sup>17</sup> Department of Thoracic Surgery, Vanderbilt University Medical Center, Nashville, TN, USA

35 <sup>18</sup> Princess Margaret Cancer Centre, Temerty School of Medicine, Dalla Lana School of Public  
36 Health, University of Toronto, Toronto, ON, Canada

37 <sup>19</sup> Thoracic Oncology Service, Memorial Sloan Kettering Cancer Center, New York, New York

38 <sup>20</sup> Helen Diller Family Comprehensive Cancer Center, Center for Genes, Environment and  
39 Health and Institute for Human Genetics, University of California San Francisco, San Francisco,  
40 California.

41

42

43  
44  
45  
46  
47  
48  
49  
50  
51  
52  
53  
54  
55  
56  
57  
58  
59  
60  
61  
62  
63  
64  
65  
66  
67  
68  
69  
70  
71  
72  
73  
74

## Abstract

Immune checkpoint inhibitors (ICIs) are a remarkable advancement in cancer therapeutics; however, a substantial proportion of patients develop severe immune-related adverse events (irAEs). Understanding and predicting irAEs is a key to advancing precision immuno-oncology. Immune checkpoint inhibitor-mediated colitis (IMC) is a significant complication from ICI and can have life-threatening consequences. Based on clinical presentation, IMC mimics inflammatory bowel disease, however the link is poorly understood. We hypothesized that genetic susceptibility to Crohn's disease (CD) and ulcerative colitis (UC) may predispose to IMC. We developed and validated polygenic risk scores for CD (PRS<sub>CD</sub>) and UC (PRS<sub>UC</sub>) in cancer-free individuals and assessed the role of each of these PRSs on IMC in a cohort of 1,316 patients with non-small cell lung cancer who received ICIs. Prevalence of all-grade IMC in our cohort was 4% (55 cases), and for severe IMC, 2.5% (32 cases). The PRS<sub>UC</sub> predicted the development of all-grade IMC (HR=1.34 per standard deviation [SD], 95% CI=1.02-1.76, *P*=0.04) and severe IMC (HR=1.62 per SD, 95% CI=1.12-2.35, *P*=0.01). PRS<sub>CD</sub> was not associated with IMC or severe IMC. The association between PRS<sub>UC</sub> and IMC (all-grade and severe) was consistent in an independent pan-cancer cohort of patients treated with ICIs. Furthermore, PRS<sub>UC</sub> predicted severe IMC among patients treated with combination ICIs (OR = 2.20 per SD, 95% CI = 1.07-4.53, *P*=0.03). This is the first study to demonstrate the potential clinical utility of a PRS for ulcerative colitis in identifying patients receiving ICI at high risk of developing IMC, where risk reduction and close monitoring strategies could help improve overall patient outcomes.

75

76 Introduction

77 Immunotherapy with immune checkpoint inhibitors (ICI) has substantially improved  
78 clinical outcomes in patients with advanced cancers such as melanoma, non-small cell  
79 lung cancer (NSCLC), bladder, renal, breast, and other cancers<sup>1-7</sup>. ICIs block the ability  
80 of malignant cells to escape detection through immune checkpoints such as  
81 programmed cell death protein 1/ programmed cell death ligand 1 (PD-1/PD-L1) or  
82 cytotoxic T-lymphocyte associated protein 4 (CTLA-4). Blockade of these checkpoints  
83 restores host immunosurveillance in some tumors by stimulating cytotoxic T-cells to  
84 induce cancer cell apoptosis<sup>2,8-11</sup>.

85

86 Despite ICIs being a paradigm-shifting breakthrough in cancer treatment, enhanced  
87 activation of the immune system can lead to immune-related adverse events (irAEs)  
88 that can result in permanent discontinuation of ICIs, severe morbidity, and even patient  
89 death<sup>12-14</sup>. The most severe irAEs include hypophysitis, diabetes, colitis, hepatitis, and  
90 pneumonitis, with other common irAEs including rash and thyroiditis<sup>12,15-17</sup>. The  
91 incidence of immune checkpoint inhibitor-mediated colitis (IMC) ranges from 1%-25%  
92 and varies by ICI therapy<sup>18,19</sup>. The incidence of IMC is higher in patients treated with  
93 combined anti-PD-1/PD-L1 and anti CTLA4 therapy<sup>20,21</sup>. Nearly 15-20% of patients  
94 receiving combination therapy develop severe IMC, which is the leading cause of  
95 hospitalization and treatment cessation<sup>13,14,18,20,21</sup>. Endoscopic and histological findings  
96 suggest that the presentation of IMC mimics autoimmune colitis such as ulcerative  
97 colitis (UC), a form of inflammatory bowel disease (IBD)<sup>22,23</sup>. Despite the phenotypic  
98 similarities between IBD and IMC, it is unclear if the underlying mechanism is shared or  
99 distinct.

100

101 We sought to characterize the relationship between genetic predisposition to common  
102 types of autoimmune colitis (ulcerative colitis (UC) and Crohn's disease (CD)), and IMC  
103 in a cohort of NSCLC patients receiving ICI treatment. We first developed polygenic risk  
104 scores (PRS) for UC and CD using individuals not diagnosed with cancer at baseline in  
105 UK Biobank (UKB) and validated these PRSs in an independent dataset of cancer-free

106 participants in Vanderbilt University Medical Center biobank (BioVU)<sup>24</sup>. We then  
107 evaluated the association between each of these PRS and the development of IMC in a  
108 cohort of patients with NSCLC receiving ICI therapy and conducted an independent  
109 replication in a cohort of patients with diverse cancer types treated with ICI therapy in  
110 BioVU<sup>24</sup>. We further investigated the association between human leukocyte antigen  
111 (HLA) alleles known to affect UC risk with IMC. Additionally, we examined the role of  
112 IMC and PRS for UC, and CD, respectively, on progression free survival (PFS) and  
113 overall survival (OS).

114

## 115 Results

### 116 *Patient Characteristics*

117 We analyzed data from 1,316 study participants included in the GeRI cohort, which  
118 included four sites (Table 1 and See Methods). The GeRI cohort comprised  
119 approximately 50% men and the mean age at lung cancer diagnosis was 65 years (+/  
120 10.3). The study was composed of 69.5% individuals who self-reported as White  
121 followed by 6.7% identifying as Asian, and 5.3% as Black. A small proportion (9%)  
122 received the combined anti PD-1/PD-L1, and anti CTLA-4 inhibitor therapy and the  
123 remainder received either anti PD-1 or PD-L1 inhibitor monotherapy(91%). The  
124 cumulative incidence of IMC was ~4% (55 events); it was ~2% (32 events) for severe  
125 IMC. The rates were similar across all study sites. The analytic strategy of our study is  
126 illustrated in Figure 1.

127

### 128 *Development and validation of PRS for UC and CD*

129 We used 70% of the cancer-free UKB dataset to tune parameters for PRS using  
130 LDpred2<sup>25</sup>. We then obtained effect estimates for the PRS for CD and UC in the  
131 remaining 30% (testing data). In the UKB testing data, the area under the receiver  
132 operating curve (AUROC) for the PRS<sub>UC</sub> was 0.66 (95% CI = 0.64-0.68), and the  
133 AUROC for PRS<sub>CD</sub> was 0.72 (95% CI = 0.69-0.74) (Supplementary Figure 1). In the  
134 adjusted model, PRS<sub>UC</sub> was strongly associated with UC with an odds ratio (OR) of 1.84  
135 per standard deviation (SD) (95% CI = 1.76-1.93,  $p < 1.0 \times 10^{-12}$ ). Similarly, PRS<sub>CD</sub> was  
136 positively associated with CD with OR of 1.83 per SD (95% CI = 1.72-1.95,  $p < 1.0 \times 10^{-12}$ ).

137 <sup>12</sup>). We observed an intermediate correlation between the two PRSs (Pearson  
138 correlation = 0.38). Additionally, the AUROC for PRS<sub>UC</sub> on CD was 0.58 (95% CI: 0.57 -  
139 0.60), while PRS<sub>CD</sub> on UC yielded an AUROC of 0.58 (95% CI: 0.56 - 0.59). These  
140 results suggest the presence of some shared genetic susceptibility between UC and  
141 CD. However, the distinct genetic factors influencing each phenotype remain the  
142 primary drivers of the individual PRS effects. The two PRSs were validated in another  
143 sample of cancer-free individuals from BioVU<sup>21</sup>. Similar to the UKB results, the  
144 individual PRS<sub>CD</sub> and PRS<sub>UC</sub> were also strongly associated with CD and UC in BioVU.  
145 We observed an OR of 2.18 per SD (95% CI = 2.05-2.32,  $p < 1.0 \times 10^{-12}$ ) for PRS<sub>CD</sub>, and  
146 an OR of 1.75 per SD (95% CI = 1.59-1.92,  $p < 1.0 \times 10^{-12}$ ) for PRS<sub>UC</sub>. The AUROC for  
147 PRS<sub>CD</sub> and PRS<sub>UC</sub> were 0.72 (95% CI = 0.70- 0.73) and 0.65 (95% CI = 0.62-0.68),  
148 respectively (Supplementary Figure 2).

149

#### 150 *PRS of autoimmune colitis as a predictor of IMC*

151 The mean PRS<sub>UC</sub> was significantly higher in patients who developed IMC  
152 (Supplementary Figure 3). We examined the cumulative incidence of IMC (all-grade and  
153 severe) in the top 10<sup>th</sup> percentile (high genetic risk), 10-90<sup>th</sup> percentile (average genetic  
154 risk), and lowest 10<sup>th</sup> percentile (low genetic risk) of the PRS<sub>UC</sub>. Individuals in the top  
155 10<sup>th</sup> percentile of the PRS<sub>UC</sub> had higher rates of IMC (all-grade:  $p=0.01$  and severe:  
156  $p=0.03$ ) compared to other two categories (Figure 2). Using Cox proportional hazards  
157 model and adjusting for genetic ancestry, recruiting site, age, sex, cancer histology, and  
158 type of therapy, we observed that the PRS<sub>UC</sub> was significantly associated with any  
159 diagnosis of IMC in the GeRI cohort with a hazard ratio (HR) of 1.34 per SD (95% CI =  
160 1.02-1.76,  $p=0.04$ ). For a diagnosis of severe IMC, the HR per SD was 1.62 (95% CI =  
161 1.12-2.35,  $p=0.01$ ) (Table 2). We found no significant association between PRS<sub>CD</sub> and  
162 IMC or severe IMC (Table 2).

163

164 Additionally, we conducted stratified analysis by type of therapy and histology of lung  
165 cancer to further characterize the association between PRS<sub>UC</sub> and IMC (all-grade and  
166 severe). For all-grade IMC, the results showed little attenuation and nominal  
167 significance when stratified by type of therapy (Table 2). However, for severe IMC we

168 observed a HR per SD of 1.51 (95% CI = 1.01-2.27, p=0.04) in patients receiving anti-  
169 PD1/anti PD-L1 monotherapy versus a HR per SD of 4.31 (95% CI = 1.08-17.24,  
170 p=0.03) in those patients receiving a combined therapy. Patients with adenocarcinoma  
171 had a HR per SD of 1.43 (95% CI = 1.06-1.93, p=0.02) for all-grade IMC and a HR per  
172 SD of 2.12 (95% CI = 1.37-3.26, p=6x10<sup>-04</sup>) for severe IMC. We also performed  
173 association analyses between ulcerative colitis PRS and IMC using different previously  
174 published PRS<sub>UC</sub> and noted consistent and robust trends toward the association  
175 (Supplementary Table 2).

176

### 177 *Replication of the association between PRS<sub>UC</sub> and IMC*

178 Replication was conducted within an independent study of 873 patients from a pan-  
179 cancer cohort in BioVU<sup>24</sup> who underwent treatment with either anti-PD1/PD-L1  
180 monotherapy or combination ICI therapy. The characteristics of the replication cohort  
181 are shown in Supplementary Table 1. Briefly, the replication study consisted of 63%  
182 males and 37% females. Among 873 ICI-treated patients, approximately 95% of the  
183 patients received anti-PD1/PD-L1 monotherapy and 5% patients received combined  
184 anti-PD-1/PD-L1 and anti-CTLA4 therapy. An additional 274 cancer patients were  
185 identified and were treated with anti-CTLA4 monotherapy.

186

187 The results from the analysis in the replication study are presented in Table 3. In our  
188 analysis of 873 patients, we found a trends towards association between PRS<sub>UC</sub> and all-  
189 grade IMC (OR per SD = 1.29, 95% CI = 0.98 – 1.69, p=0.07). However, for PRS<sub>UC</sub> and  
190 severe IMC, we observed statistically significant replication with an OR per SD of 1.39  
191 (95% CI = 1.02 – 1.90, p=0.04, Table 3). Within our stratified analysis by type of  
192 therapy, for anti-PD1/PD-L1 monotherapy, we observed an OR per SD of 1.25 (95% CI  
193 = 0.88 - 1.78, p=0.21) for all-grade IMC, while a slightly stronger and nominally  
194 significant association was seen for severe IMC (OR per SD = 1.47, 95% CI = 0.96 -  
195 2.25, p=0.08). For those receiving dual therapy, we observed an OR per SD of 2.04  
196 (95% CI = 0.79 - 5.28, p=0.14) for all-grade IMC and an OR per SD of 1.89 (95% CI =  
197 0.74 - 4.86, p=0.19) for severe IMC. Furthermore, we conducted an adjusted logistic  
198 regression model within the anti-CTLA4 monotherapy (N=274) and found an OR per SD

199 of 0.92 (95% CI = 0.67 – 1.26, p=0.59) for all-grade IMC. For severe IMC in the anti-  
200 CTLA4 monotherapy group, we observed an OR per SD of 1.00 (95% CI = 0.71 – 1.40,  
201 p=0.99).

202

### 203 *Meta-analysis of PRS<sub>UC</sub> and IMC associations in discovery and replication studies*

204 Next, we performed a meta-analysis using fixed-effect inverse-variance weighting,  
205 combining the logistic regression models from the initial GeRI cohort and BioVU  
206 replication cohort (Table 3). Our findings show a significantly positive association  
207 between PRS<sub>UC</sub> and all-grade IMC with an OR<sub>meta</sub> per SD of 1.35 (95% CI = 1.12 –  
208 1.64, p=2x10<sup>-03</sup>). Similarly, a robust association of PRS<sub>UC</sub> and severe IMC was  
209 observed with an OR<sub>meta</sub> per SD of 1.49 (95% CI = 1.18 – 1.88, p=9x10<sup>-04</sup>).

210

211 For patients who received anti-PD1/PD-L1 monotherapy, PRS<sub>UC</sub> demonstrated a  
212 significant association with all-grade IMC, showing an OR<sub>meta</sub> per SD of 1.35 (95% CI =  
213 1.07 - 1.69, p = 0.01). Similarly, a stronger association was observed with severe IMC,  
214 with an OR<sub>meta</sub> per SD of 1.48 (95% CI = 1.10 - 1.98, p = 9x10<sup>-3</sup>). Among patients  
215 treated with combination or dual therapy, a trend towards association with all-grade IMC  
216 was seen (OR<sub>meta</sub> per SD = 1.80, 95% CI = 0.95 - 3.41, p = 0.07); however, a robust  
217 and pronounced association was found in relation to severe IMC (OR<sub>meta</sub> per SD = 2.20,  
218 95% CI = 1.07 - 4.53, p = 0.03).

219

### 220 *Role of known UC-HLA associations on IMC in GeRI cohort*

221 We assessed the association between all-grade IMC and HLA markers known to be  
222 associated with ulcerative colitis<sup>26,27</sup> (Supplementary Figure 4). Out of 12 known UC-  
223 associated HLA markers, we observed an OR of 2.63 (95% CI = 1.08-6.40, p=0.03) for  
224 HLA-DRB1\*12:01 and all-grade IMC. However, at false discovery rate (FDR)<0.05 none  
225 of the known HLA markers were associated with all-grade IMC in the GeRI cohort.

226

### 227 *IMC and PRS of autoimmune colitis as a predictor of PFS and OS*

228 To assess the role of IMC on clinical outcomes, we conducted a cox proportional  
229 hazards models with a 90-day treatment landmark (Table 4 and Figure 3). We observed

230 the effect of all-grade IMC on OS with a HR of 0.40 (95% CI = 0.24-0.66,  $p=3.0 \times 10^{-04}$ )  
231 and of severe IMC on OS with a HR of 0.23 (95% CI = 0.09-0.55,  $p=9.0 \times 10^{-04}$ ).  
232 However, we observed no significant association between PFS and IMC (Table 4 and  
233 Supplementary Figure 5).

234

235 Despite the association between PRS<sub>UC</sub> and IMC, PRS<sub>UC</sub> was not associated with PFS  
236 (HR per SD = 1.00, 95% CI = 0.94-1.07,  $p=0.99$ ) and OS (HR per SD = 1.01, 95% CI =  
237 0.93-1.09,  $p=0.91$ ) in our cohort (Table 5). Similarly, we observed no association  
238 between PRS<sub>CD</sub> and PFS (HR per SD = 0.98, 95% CI = 0.91-1.05,  $p=0.50$ ) and OS (HR  
239 per SD = 1.02, 95% CI = 0.93-1.11,  $p=0.68$ ), respectively (Table 5).

240

## 241 Discussion

242 Immune checkpoint inhibitors are part of standard regimens to treat many advanced  
243 cancers and are used in the adjuvant and neoadjuvant settings for early stage diseases  
244 in multiple cancers<sup>3,4,10,28-32</sup>. Immune-related adverse events are common complications  
245 from ICI, and there are few predictors of irAEs<sup>33,34</sup>. We sought to identify genetic  
246 predictors of immune checkpoint inhibitor-mediated colitis which frequently results in  
247 hospitalization and ICI discontinuation and can occasionally lead to death<sup>18,19,35</sup>.  
248 Specifically, we evaluated the relationship between genetic predisposition for  
249 autoimmune colitis (UC, CD) and IMC, and found that the PRS<sub>UC</sub> can predict IMC. The  
250 association was stronger when analyses were restricted to individuals with severe IMC –  
251 an important finding as the most important clinical cases to identify were best predicted  
252 by PRS<sub>UC</sub>. Furthermore, we investigated the role of HLA markers associated with UC on  
253 development of IMC. However, we did not have HLA typing for these individuals, and  
254 therefore, the imputation of HLA was not validated. Furthermore, our study was not well  
255 powered to detect the effect of many different HLA alleles after multiple hypothesis  
256 testing. Future studies will need to analyze HLA effects on IMC. .

257

258 Our findings significantly contribute to our understanding of the biological underpinnings  
259 of IMC and may also impact management of patients treated with ICIs. First, we  
260 demonstrate that IMC has some genetic overlap with UC, but we found no evidence for



261 overlap with CD. This is notable despite the correlation observed in our PRS for UC and  
262 CD, signifying that the genetic factors associated with IMC align more closely with the  
263 distinct genetic markers associated with UC. Our finding is also consistent with clinical  
264 reports in which the most frequent phenotype of IMC resembles UC most closely<sup>22,23,36</sup>.  
265 Our results also suggest that as genetic risk prediction of UC improves, genetic risk of  
266 IMC may also be improved. In particular, rare variants in certain genes substantially  
267 increase the risk of UC and we hypothesize may also affect IMC risk<sup>37-39</sup>. Prior reports  
268 on ICI-induced hypothyroidism<sup>40,41</sup> and rash<sup>42</sup> demonstrated that PRS for autoimmune  
269 disorders predict irAEs, suggesting that ICI may unmask autoimmune syndromes in  
270 some genetically predisposed individuals.

271  
272 We also found that individuals who developed IMC had improved survival outcomes  
273 when compared to those who did not develop IMC, including in a landmark sensitivity  
274 analysis, which is concordant with previously published literature<sup>43-48</sup>. However, PRS<sub>UC</sub>  
275 and PRS<sub>CD</sub> were not associated with PFS or OS, suggesting that the genetic basis of  
276 autoimmune disease susceptibility is distinct from genetic factors influencing survival  
277 outcomes. It has been postulated that both anti-tumor responses to ICIs, and  
278 development of irAEs are representative of a robust immune response; however, one  
279 possible explanation for our finding is that the genetic contributions captured in the  
280 autoimmune PRSs are probably capturing the cross-presentation of shared antigens  
281 which may not be associated with clinical outcomes. This suggests there could be other  
282 genetic and environmental factors driving the association between IMC and overall  
283 survival.

284  
285 Our study has several key implications that may impact the care of cancer patients  
286 treated with ICIs. For example, our results suggest that germline genotyping could help  
287 assist selection of patients at high risk of IMC in a clinical trial setting to assess the role  
288 of preventative measures such as the commencement of concurrent anti-TNF $\alpha$  therapies  
289 or anti-integrin  $\alpha 4\beta 7$  antibodies<sup>49,50</sup> along with ICI treatment in patients at high risk for  
290 IMC and toxicity-related early treatment cessation. Additionally, these findings may also  
291 help facilitate clinical decision-making. Combination immunotherapies are more effective

292 but are also associated with substantially increased risk of irAEs<sup>45,51–55</sup>. Our stratified  
293 analysis by type of therapy demonstrated the association between PRS<sub>UC</sub> and severe  
294 IMC in individuals receiving anti PD-1/PD-L1 and anti CTLA4 combination therapy.  
295 Among patients who may be candidates for combination immunotherapies but have high  
296 genetic risk based on PRS<sub>UC</sub>, oncologists may consider monotherapy, particularly in  
297 clinical situations in which the benefits of dual therapy on disease control may be  
298 modest. Conversely, patients who are at relatively low risk based on PRS<sub>UC</sub> may be  
299 better candidates for combination therapy. In addition, the use of PRS<sub>UC</sub> might also be  
300 considered to assist with treatment decisions in clinical settings where ICI therapy is  
301 approved but there is substantial clinical equipoise; for example, in the adjuvant setting  
302 for patients with resectable NSCLC<sup>56,57</sup> and low PD-L1 expression or adjuvant setting for  
303 resected stage II melanoma<sup>58</sup>. Our analysis within the anti-CTLA4 monotherapy  
304 subgroup did not reveal any significant association between PRS<sub>UC</sub> and IMC. These  
305 results should be interpreted cautiously since sample size was limited in this subgroup.  
306 However, anti-CTLA4 as a monotherapy has become less common in contemporary  
307 clinical practice, with its predominant use being in combination with anti-PD1/PD-L1  
308 therapy, and our PRS<sub>UC</sub> did predict IMC in these patients. Our initial findings were  
309 observed in a cohort of NSCLC patients. However, our replication study included a  
310 broader array of pan-cancer study and demonstrated the generalizability of PRS<sub>UC</sub> to  
311 predict IMC.

312

313 Although our study has important clinical implications and strengths, it also has few  
314 limitations. While PRS effectively captures established variants associated with UC, it  
315 may not account for unidentified genetic contributors (missing heritability). Nevertheless,  
316 as we unveil the missing heritability of UC, we will further improve our PRS.  
317 Furthermore, we developed these PRSs in a predominantly European ancestry cohort  
318 (UK Biobank) and the GeRI cohort and BioVU replication study was also predominantly  
319 of European ancestry; more work is needed to generalize these results to other  
320 ancestries. In addition, there may be other limitations to implementing PRS in the clinic  
321 including cost, rapidity of return of results and reliability and consistency across different  
322 algorithms<sup>59–62</sup>.

323

324 We also found an association between IMC and OS. This result could be due to survivor  
325 bias<sup>63,64</sup> where patients who respond to therapy and are on therapy longer are at an  
326 increased risk of developing irAEs. We used a 90-day landmark analysis<sup>65</sup> to account for  
327 this bias for both PFS and OS, although this may not completely eliminate the survivor  
328 bias.

329

330 Overall, our findings suggest a shared genetic basis between ulcerative colitis and  
331 immune checkpoint inhibitor-mediated colitis among patients undergoing ICI treatment.  
332 Prediction of IMC using genetic information should create new opportunities for better  
333 risk stratification and ultimately for better management and possibly prevention of this  
334 common and important side effect from immunotherapy.

335

## 336 Methods

### 337 *Study Population*

338 Genetics of immune-related adverse events and Response to Immunotherapy (GeRI)  
339 cohort is comprised of 1,316 advanced Stage IIIB/IV NSCLC patients who received ICI  
340 therapy (PD-1 or PD-L1 inhibitors as monotherapy or in combination with either CTLA-4  
341 inhibitors and/or chemotherapy) and were recruited from four different institutions:  
342 Memorial Sloan Kettering Cancer Center (MSKCC), Vanderbilt University Medical  
343 Center (VUMC), Princess Margaret Cancer Center (PM), and University of California,  
344 San Francisco (UCSF).

345

346 A total of 752 individuals were treated with ICIs at MSKCC between 2011 and 2018 and  
347 had an available blood sample. Clinical data were extracted from a manual review of  
348 medical and pharmacy records for demographics, lung cancer histology, and ICI  
349 treatment history, including detailed information on immune-related adverse events  
350 (irAEs). The VUMC cohort is composed of 267 patients who received ICI therapy at the  
351 medical center between 2009 and 2019. Patients participated in BioVU<sup>21</sup>, Vanderbilt's  
352 biomedical repository of DNA that is linked to de-identified health records. Treatment  
353 dates and irAEs were extracted using manual chart review by a trained thoracic

354 oncology nurse. The PM cohort included 266 advanced NSCLC patients who received  
355 ICI therapy between 2011 and 2022; all provided a blood sample and completed a  
356 questionnaire. Clinical data were manually extracted by trained abstractors,  
357 supplemented by the PM Cancer Registry. From UCSF, 31 patients who had received  
358 ICIs were identified by thoracic oncologists between 2019 and 2021 and provided either  
359 a blood or saliva sample after informed consent. Clinical data including, demographics,  
360 history of lung cancer and ICI treatment, and irAEs were extracted after manual review  
361 of electronic health records. Institutional Review Board approvals were obtained at each  
362 site individually and written informed consent was acquired from all study participants  
363 prior to inclusion in the study.

364

#### 365 *Immune checkpoint inhibitor-mediated colitis (IMC)*

366 After the initiation of ICI therapy, immune checkpoint inhibitor-mediated colitis (IMC)  
367 was defined based on clinical chart review and documentation of IMC by the primary  
368 oncologist, gastroenterologist, and/or other clinicians treating the patient based on  
369 clinical features and/or radiologic/histologic evidence suggesting colitis due to ICI.  
370 Participants who were diagnosed with infectious causes of colitis including *Clostridium*  
371 *difficile*, or a pathogen on a gastrointestinal pathogen panel or ova and parasite test  
372 were excluded. To assess the severity of IMC, we used 2 metrics based on NCI  
373 Common Terminology Criteria for Adverse Events Version 5 (NCI-CTCAE) that  
374 captures grade 3 IMC or above: (i) hospitalization for management of IMC and/or (ii)  
375 permanent cessation of ICI therapy due to the adverse event.

376

377 IMC was coded as a dichotomous variable (1: all IMC, 0: no IMC) and time-to-IMC was  
378 assessed from start of the ICI therapy to the date of onset of IMC or date of ICI  
379 discontinuation due to IMC. Patients who did not experience IMC were censored either  
380 at the end of treatment due to any reason or last follow-up date if the treatment was  
381 ongoing. Based on the severity criteria, severe IMCs were also coded as binary  
382 variables (1: severe IMC, 0: no IMC).

383

#### 384 *Ascertainment of clinical outcomes*

385 Progression free survival (PFS) and overall survival (OS) were evaluated from the date  
386 of initiation of ICI therapy to date of progression and death, respectively, at MSK, PM  
387 and UCSF sites. At VUMC, time-to-discontinuation of therapy due to progression from  
388 therapy initiation was used as a surrogate. If the treatment was ongoing, patients were  
389 censored at the date of last follow-up. The VUMC cohort is de-identified and not linked  
390 to the National Death Index; therefore, all-cause mortality (overall survival) information  
391 is unavailable for VUMC participants (n=267).

392

#### 393 *Quality control, genotyping, and imputation of GeRI cohort*

394 DNA from blood or saliva was extracted and genotyped using Affymetrix Axiom  
395 Precision Medicine Diversity Array. Samples with a call rate <95% were excluded from  
396 the analysis and SNPs with missing rates >5% were also excluded from the analysis.  
397 Genetic ancestry was calculated using principal component analysis in PLINK after  
398 linkage disequilibrium pruning ( $R^2 < 0.1$ ). Imputation was performed using the Michigan  
399 Imputation Server with the 1000 Genomes phase3 v5 reference panel. Standard  
400 genotyping and quality control procedures were implemented. Variants with minor allele  
401 frequency <0.01 were excluded from the analysis.

402

#### 403 *Development and validation of polygenic risk score (PRS) for autoimmune colitis*

404 We developed PRS for CD (1,312 CD cases and 16,303 controls) and UC (2,814 UC  
405 cases and 16,303 controls), separately using UK Biobank (UKB) data, where we divided  
406 the data into two parts: 70% for hyperparameter tuning and 30% of the remaining data  
407 for testing the PRS. Genetic data from both the UKB Affymetrix Axiom array (89%) or  
408 the UK BiLEVE array (11%)<sup>66</sup> which have been imputed using the Haplotype Reference  
409 Consortium and the UK10K and 1000 Genomes phase 3 reference panels<sup>66</sup> were  
410 utilized in the analysis. Analyses were restricted to European ancestry individuals based  
411 on self-reported White ethnicity and genetic ancestry PCs within five standard  
412 deviations of the population mean. Samples with discordant self-reported and genetic  
413 sex were excluded. Additionally, we also excluded one sample from each pair of first-  
414 degree relatives. Samples with greater than five standard deviations from the mean  
415 heterozygosity were further excluded from the analysis. Information from both self-

416 report and ICD9/10 codes were used to capture CD (1,312 cases) and UC (2,814  
417 cases) phenotype in UKB.

418

419 We used the LDpred2<sup>25</sup> method to develop PRS of CD and UC. LDpred2 estimates the  
420 posterior effect sizes based on summary statistics from genome-wide association study  
421 while taking into account the linkage disequilibrium between variants and assuming a  
422 prior on the markers. To derive PRS, summary statistics were obtained from previously  
423 published largest genome-wide association study of CD, and UC<sup>67</sup>. We restricted the  
424 analysis to HapMap3 variants and implemented LDpred2-auto function to evaluate the  
425 posterior effect sizes for each variant. LDpred2-auto first estimates the proportion of  
426 causal variants and heritability for trait under evaluation. Next, it determines the  
427 posterior effects estimates for the included variants. The final PRS weights are available  
428 at <https://zenodo.org/record/8025635>. Briefly, PRS<sub>UC</sub> included 744,575 variants,  
429 whereas PRS<sub>CD</sub> comprised of 744,682 variants.

430

431 PRS was constructed using the formula:  $PRS = \beta_1 \times SNP_1 + \beta_2 \times SNP_2 + \dots + \beta_n \times$   
432  $SNP_n$ , where  $\beta$  was estimated using LDpred2-auto function. Each PRS was  
433 standardized to have a mean of zero and standard deviation of 1. The association of  
434 PRS<sub>CD</sub> and PRS<sub>UC</sub> with each respective target phenotype was assessed using logistic  
435 regression models, adjusted for age at diagnosis for cases and age at enrollment for  
436 controls, sex, genotyping array, and the top 10 genetic ancestry principal components  
437 (PCs). Area under the receiver operating characteristic (AUROC) curves were  
438 calculated in the testing dataset and used to assess the overall prediction accuracy of  
439 each the PRS in UKB.

440

441 We validated the two PRSs in a sample of cancer-free individuals (1,420 CD cases, 459  
442 UC cases, and 20,876 controls in the VUMC BioVU<sup>24</sup>. All analyses were restricted to  
443 individuals of European ancestry and adjusted for age, sex, and ten principal  
444 components. AUROC curves were used to estimate the prediction of the PRSs.

445

446 *Assessment of autoimmune colitis PRS to predict IMC in GeRI cohort*

447 Using the weights generated from LDPred2 for CD, and UC, we separately calculated  
448 two weighted PRSs ( $PRS_{CD}$ ,  $PRS_{UC}$ ) for the GeRI participants. Cumulative incidence of  
449 IMC (all-grade and severe) was assessed by categories of PRS percentiles. Individuals  
450 in the top 10% of the PRS distribution ( $PRS > 90$ th percentile) were classified as having  
451 high genetic risk, those in the bottom 10% ( $PRS \leq 10$ th percentile) were classified as low  
452 risk, and the middle category ( $>10$ th to  $\leq 90$ th percentile) classified as average genetic  
453 risk. Additionally, to evaluate the performance of each potential PRS on either time-to-  
454 IMC or time-to-severe-IMC, we used Cox proportional hazards models, adjusted for  
455 age at diagnosis, sex, lung cancer histology, type of therapy, recruiting site, and the first  
456 5 genetic ancestry PCs. To further understand the differential effects of type of therapy  
457 and histology on the association between  $PRS_{UC}$  and IMC, we conducted stratified  
458 analysis by type of ICI therapy and histology of lung cancer.

459

#### 460 *Replication of $PRS_{UC}$ and IMC in an independent study*

461 We performed an independent replication to further characterize the association  
462 between  $PRS_{UC}$  and IMC. Our replication study comprises of 873 patients enrolled in  
463 BioVU<sup>24</sup>, across all cancer types and treated with either anti-PD-1/PD-L1 monotherapy  
464 or a combination of anti-PD1/PD-L1 and anti-CTLA4 therapy. There was no overlap of  
465 samples between individuals from BioVU included in the GeRI cohort (discovery) and  
466 the replication dataset from BioVU. Immune checkpoint inhibitor-mediated colitis was  
467 ascertained by manual review of the electronic health records. An IMC case was  
468 defined as either biopsy-confirmed colitis or the occurrence of diarrhea in ICI patients,  
469 not attributable to any other cause, that required treatment with steroids and  
470 subsequently showed improvement with steroid therapy. All samples were genotyped  
471 using Illumina Expanded Multi-Ethnic Genotyping Array (MEGA-EX) and imputed to  
472 1000 Genomes reference panel (version 3)<sup>24</sup>. Post imputation standard quality control  
473 procedures were employed to exclude low-quality variants and samples. In short,  
474 samples with a call rate  $< 95\%$  and SNPs with missing rates  $> 2\%$  were excluded from  
475 the analysis. Additionally, all SNPs with minor allele frequency  $< 1\%$  and Hardy-  
476 Weinberg P-value  $< 1e-06$ , and INFO  $< 0.95$  were excluded.

477

478 We performed unconditional logistic regression to assess the association between  
479 PRS<sub>UC</sub> and all-grade IMC and severe IMC, respectively. All models were adjusted for  
480 age at diagnosis, sex, type of therapy, and 5 principal components. In addition, we  
481 conducted stratified logistic regression by type of therapy and the models were adjusted  
482 for age at diagnosis, sex, and 5 principal components. This study had additional 274  
483 patients who received anti-CTLA4 monotherapy, and we further evaluated the  
484 association between PRS<sub>UC</sub> and IMC separately in this group.

485

#### 486 *Meta-analysis of association between PRS<sub>UC</sub> and IMC*

487 For meta-analysis, we conducted standard logistic regression adjusted for age at  
488 diagnosis, sex, type of therapy, site and 5 PCs in the GeRI study. Next, we carried out  
489 an inverse-variance weighted fixed effect meta-analysis between our discovery and  
490 replication studies. Additionally, we conducted a meta-analysis of the stratified results  
491 by type of therapy in the GeRI cohort and the replication study from BioVU.

492

#### 493 *Role of HLA markers associated with UC and CD on IMC in GeRI cohort*

494 To elucidate the role of known UC-associated HLA markers on IMC, we performed HLA  
495 imputation using CookHLA<sup>68</sup> and HATK<sup>69</sup>. HLA alleles were imputed at 2-field resolution  
496 against the Type 1 Diabetes Genetics Consortium reference panel<sup>70</sup> and using the  
497 nomenclature from IPD-IMGT/HLA database v3.51. Association analysis with all-grade  
498 IMC was conducted using logistic regression models adjusted for age at diagnosis, sex,  
499 lung cancer histology, type of therapy, recruiting site, and 5 PCs. Analyses were  
500 restricted to common HLA alleles (frequency  $\geq 0.01$ ) known to be associated with  
501 ulcerative colitis<sup>26</sup>.

502

#### 503 *Impact of IMC and PRS of autoimmune colitis on PFS and OS in GeRI cohort*

504 Association of IMC (all-grade and severe) on PFS and OS was examined using the Cox  
505 proportional hazards model by examining only the patients who had PFS and OS longer  
506 than 90 days (90-day landmark)<sup>65</sup>. All models were adjusted for age at diagnosis, sex,  
507 lung cancer histology, type of therapy, and 5 PCs. Survival curves and rates were  
508 estimated using Kaplan-Meier method. To investigate the association between PRS<sub>CD</sub>,



509 PRS<sub>UC</sub> on PFS and OS, we conducted Cox proportional hazards models, adjusted for  
510 age at diagnosis, sex, histology, type of therapy, and 5 PCs. All *P* values are two-sided,  
511 and analyses were conducted using Plink2, R v4.2.2 (R foundation for Statistical  
512 Computing) with RStudio v2022.12.0.353.

513

## 514 References

- 515 1. Bai RL, Chen NF, Li LY, Cui JW. A brand new era of cancer immunotherapy: breakthroughs  
516 and challenges. *Chin Med J (Engl)*. 2021;134(11):1267-1275.  
517 doi:10.1097/CM9.0000000000001490
- 518 2. Wei SC, Duffy CR, Allison JP. Fundamental Mechanisms of Immune Checkpoint Blockade  
519 Therapy. *Cancer Discovery*. 2018;8(9):1069-1086. doi:10.1158/2159-8290.CD-18-0367
- 520 3. Twomey JD, Zhang B. Cancer Immunotherapy Update: FDA-Approved Checkpoint  
521 Inhibitors and Companion Diagnostics. *AAPS J*. 2021;23(2):39. doi:10.1208/s12248-021-  
522 00574-0
- 523 4. Topalian SL, Drake CG, Pardoll DM. Immune Checkpoint Blockade: A Common  
524 Denominator Approach to Cancer Therapy. *Cancer Cell*. 2015;27(4):450-461.  
525 doi:10.1016/j.ccell.2015.03.001
- 526 5. Sharpe AH. Introduction to checkpoint inhibitors and cancer immunotherapy. *Immunological*  
527 *Reviews*. 2017;276(1):5-8. doi:10.1111/imr.12531
- 528 6. Robert C. A decade of immune-checkpoint inhibitors in cancer therapy. *Nat Commun*.  
529 2020;11(1):3801. doi:10.1038/s41467-020-17670-y
- 530 7. Darvin P, Toor SM, Sasidharan Nair V, Elkord E. Immune checkpoint inhibitors: recent  
531 progress and potential biomarkers. *Exp Mol Med*. 2018;50(12):1-11. doi:10.1038/s12276-  
532 018-0191-1
- 533 8. Buchbinder EI, Desai A. CTLA-4 and PD-1 Pathways: Similarities, Differences, and  
534 Implications of Their Inhibition. *American Journal of Clinical Oncology*. 2016;39(1):98-106.  
535 doi:10.1097/COC.0000000000000239
- 536 9. Waldman AD, Fritz JM, Lenardo MJ. A guide to cancer immunotherapy: from T cell basic  
537 science to clinical practice. *Nat Rev Immunol*. 2020;20(11):651-668. doi:10.1038/s41577-  
538 020-0306-5
- 539 10. Liu X, Hogg GD, DeNardo DG. Rethinking immune checkpoint blockade: 'Beyond the T cell.'  
540 *J Immunother Cancer*. 2021;9(1):e001460. doi:10.1136/jitc-2020-001460
- 541 11. Ribas A. Tumor Immunotherapy Directed at PD-1. *N Engl J Med*. 2012;366(26):2517-2519.  
542 doi:10.1056/NEJMe1205943
- 543 12. Byun DJ, Wolchok JD, Rosenberg LM, Girotra M. Cancer immunotherapy — immune  
544 checkpoint blockade and associated endocrinopathies. *Nat Rev Endocrinol*.  
545 2017;13(4):195-207. doi:10.1038/nrendo.2016.205
- 546 13. Postow MA, Sidlow R, Hellmann MD. Immune-Related Adverse Events Associated with  
547 Immune Checkpoint Blockade. *N Engl J Med*. 2018;378(2):158-168.  
548 doi:10.1056/NEJMra1703481
- 549 14. Wang Y, Zhou S, Yang F, et al. Treatment-Related Adverse Events of PD-1 and PD-L1  
550 Inhibitors in Clinical Trials. *JAMA Oncol*. 2019;5(7):1008-1019.  
551 doi:10.1001/jamaoncol.2019.0393
- 552 15. Okiyama N, Tanaka R. Immune-related adverse events in various organs caused by  
553 immune checkpoint inhibitors. *Allergology International*. 2022;71(2):169-178.  
554 doi:10.1016/j.alit.2022.01.001

- 555 16. Shankar B, Zhang J, Naqash AR, et al. Multisystem Immune-Related Adverse Events  
556 Associated With Immune Checkpoint Inhibitors for Treatment of Non-Small Cell Lung  
557 Cancer. *JAMA Oncol.* 2020;6(12):1952-1956. doi:10.1001/jamaoncol.2020.5012
- 558 17. Conroy M, Naidoo J. Immune-related adverse events and the balancing act of  
559 immunotherapy. *Nat Commun.* 2022;13(1):392. doi:10.1038/s41467-022-27960-2
- 560 18. Som A, Mandaliya R, Alsaadi D, et al. Immune checkpoint inhibitor-induced colitis: A  
561 comprehensive review. *World J Clin Cases.* 2019;7(4):405-418. doi:10.12998/wjcc.v7.i4.405
- 562 19. Pocha C, Roat J, Viskocil K. Immune-mediated colitis: Important to recognize and treat.  
563 *Journal of Crohn's and Colitis.* 2014;8(2):181-182. doi:10.1016/j.crohns.2013.09.019
- 564 20. Pauken KE, Dougan M, Rose NR, Lichtman AH, Sharpe AH. Adverse Events Following  
565 Cancer Immunotherapy: Obstacles and Opportunities. *Trends Immunol.* 2019;40(6):511-  
566 523. doi:10.1016/j.it.2019.04.002
- 567 21. Kelly-Goss MR, Badran YR, Dougan M. Update on Immune Checkpoint Inhibitor  
568 Enterocolitis. *Curr Gastroenterol Rep.* 2022;24(12):171-181. doi:10.1007/s11894-022-  
569 00852-7
- 570 22. Chen JH, Pezhouh MK, Lauwers GY, Masia R. Histopathologic Features of Colitis Due to  
571 Immunotherapy With Anti-PD-1 Antibodies. *The American Journal of Surgical Pathology.*  
572 2017;41(5):643-654. doi:10.1097/PAS.0000000000000829
- 573 23. Nahar KJ, Rawson RV, Ahmed T, et al. Clinicopathological characteristics and management  
574 of colitis with anti-PD1 immunotherapy alone or in combination with ipilimumab. *J*  
575 *Immunother Cancer.* 2020;8(2):e001488. doi:10.1136/jitc-2020-001488
- 576 24. Roden DM, Pulley JM, Basford MA, et al. Development of a large-scale de-identified DNA  
577 biobank to enable personalized medicine. *Clin Pharmacol Ther.* 2008;84(3):362-369.  
578 doi:10.1038/clpt.2008.89
- 579 25. Privé F, Arbel J, Vilhjálmsón BJ. LDpred2: better, faster, stronger. *Bioinformatics.*  
580 2020;36(22-23):5424-5431. doi:10.1093/bioinformatics/btaa1029
- 581 26. Ashton JJ, Latham K, Beattie RM, Ennis S. Review article: the genetics of the human  
582 leucocyte antigen region in inflammatory bowel disease. *Alimentary Pharmacology &*  
583 *Therapeutics.* 2019;50(8):885-900. doi:10.1111/apt.15485
- 584 27. Goyette P, Boucher G, Mallon D, et al. High density mapping of the MHC identifies a shared  
585 role for HLA-DRB1\*01:03 in inflammatory bowel diseases and heterozygous advantage in  
586 ulcerative colitis. *Nat Genet.* 2015;47(2):172-179. doi:10.1038/ng.3176
- 587 28. Marin-Acevedo JA, Kimbrough EO, Lou Y. Next generation of immune checkpoint inhibitors  
588 and beyond. *Journal of Hematology & Oncology.* 2021;14(1):45. doi:10.1186/s13045-021-  
589 01056-8
- 590 29. Tang WF, Ye HY, Tang X, et al. Adjuvant immunotherapy in early-stage resectable non-  
591 small cell lung cancer: A new milestone. *Front Oncol.* 2023;13:1063183.  
592 doi:10.3389/fonc.2023.1063183
- 593 30. Mittendorf EA, Burgers F, Haanen J, Cascone T. Neoadjuvant Immunotherapy: Leveraging  
594 the Immune System to Treat Early-Stage Disease. *American Society of Clinical Oncology*  
595 *Educational Book.* 2022;(42):189-203. doi:10.1200/EDBK\_349411
- 596 31. Krishnamoorthy M, Lenehan JG, Maleki Vareki S. Neoadjuvant Immunotherapy for High-  
597 Risk, Resectable Malignancies: Scientific Rationale and Clinical Challenges. *J Natl Cancer*  
598 *Inst.* 2021;113(7):823-832. doi:10.1093/jnci/djaa216
- 599 32. Hu HG, Li YM. Emerging Adjuvants for Cancer Immunotherapy. *Front Chem.* 2020;8:601.  
600 doi:10.3389/fchem.2020.00601
- 601 33. Zhang Y, Zhang X, Li W, Du Y, Hu W, Zhao J. Biomarkers and risk factors for the early  
602 prediction of immune-related adverse events: a review. *Human Vaccines &*  
603 *Immunotherapeutics.* 2022;18(1):2018894. doi:10.1080/21645515.2021.2018894

- 604 34. Hommes JW, Verheijden RJ, Suijkerbuijk KPM, Hamann D. Biomarkers of Checkpoint  
605 Inhibitor Induced Immune-Related Adverse Events—A Comprehensive Review. *Front*  
606 *Oncol.* 2021;10:585311. doi:10.3389/fonc.2020.585311
- 607 35. Kennedy LC, Grivas P. Immunotherapy-Related Colitis: An Emerging Challenge and a  
608 Quest for Prospective Data. *JCO Oncology Practice.* 2020;16(8):464-465.  
609 doi:10.1200/OP.20.00620
- 610 36. Westdorp H, Sweep MWD, Gorris MAJ, et al. Mechanisms of Immune Checkpoint Inhibitor-  
611 Mediated Colitis. *Frontiers in Immunology.* 2021;12. Accessed September 23, 2022.  
612 <https://www.frontiersin.org/articles/10.3389/fimmu.2021.768957>
- 613 37. Luo Y, de Lange KM, Jostins L, et al. Exploring the genetic architecture of inflammatory  
614 bowel disease by whole-genome sequencing identifies association at ADCY7. *Nat Genet.*  
615 2017;49(2):186-192. doi:10.1038/ng.3761
- 616 38. Onoufriadis A, Stone K, Katsiamides A, et al. Exome Sequencing and Genotyping Identify a  
617 Rare Variant in NLRP7 Gene Associated With Ulcerative Colitis. *Journal of Crohn's and*  
618 *Colitis.* 2018;12(3):321-326. doi:10.1093/ecco-jcc/jjx157
- 619 39. Ellinghaus D, Bethune J, Petersen BS, Franke A. The genetics of Crohn's disease and  
620 ulcerative colitis – status quo and beyond. *Scandinavian Journal of Gastroenterology.*  
621 2015;50(1):13-23. doi:10.3109/00365521.2014.990507
- 622 40. Luo J, Martucci VL, Quandt Z, et al. Immunotherapy-Mediated Thyroid Dysfunction: Genetic  
623 Risk and Impact on Outcomes with PD-1 Blockade in Non–Small Cell Lung Cancer. *Clinical*  
624 *Cancer Research.* 2021;27(18):5131-5140. doi:10.1158/1078-0432.CCR-21-0921
- 625 41. Khan Z, Hammer C, Carroll J, et al. Genetic variation associated with thyroid autoimmunity  
626 shapes the systemic immune response to PD-1 checkpoint blockade. *Nat Commun.*  
627 2021;12(1):3355. doi:10.1038/s41467-021-23661-4
- 628 42. Khan Z, Di Nucci F, Kwan A, et al. Polygenic risk for skin autoimmunity impacts immune  
629 checkpoint blockade in bladder cancer. *Proceedings of the National Academy of Sciences.*  
630 2020;117(22):12288-12294. doi:10.1073/pnas.1922867117
- 631 43. Zhou X, Yao Z, Yang H, Liang N, Zhang X, Zhang F. Are immune-related adverse events  
632 associated with the efficacy of immune checkpoint inhibitors in patients with cancer? A  
633 systematic review and meta-analysis. *BMC Medicine.* 2020;18(1):87. doi:10.1186/s12916-  
634 020-01549-2
- 635 44. Zhao Z, Wang X, Qu J, et al. Immune-Related Adverse Events Associated With Outcomes  
636 in Patients With NSCLC Treated With Anti-PD-1 Inhibitors: A Systematic Review and Meta-  
637 Analysis. *Frontiers in Oncology.* 2021;11. Accessed June 1, 2022.  
638 <https://www.frontiersin.org/article/10.3389/fonc.2021.708195>
- 639 45. Petrelli F, Grizzi G, Ghidini M, et al. Immune-related Adverse Events and Survival in Solid  
640 Tumors Treated With Immune Checkpoint Inhibitors: A Systematic Review and Meta-  
641 Analysis. *J Immunother.* 2020;43(1):1-7. doi:10.1097/CJI.0000000000000300
- 642 46. Toi Y, Sugawara S, Kawashima Y, et al. Association of Immune-Related Adverse Events  
643 with Clinical Benefit in Patients with Advanced Non-Small-Cell Lung Cancer Treated with  
644 Nivolumab. *Oncologist.* 2018;23(11):1358-1365. doi:10.1634/theoncologist.2017-0384
- 645 47. Morimoto K, Yamada T, Takumi C, et al. Immune-Related Adverse Events Are Associated  
646 With Clinical Benefit in Patients With Non-Small-Cell Lung Cancer Treated With  
647 Immunotherapy Plus Chemotherapy: A Retrospective Study. *Front Oncol.* 2021;11:630136.  
648 doi:10.3389/fonc.2021.630136
- 649 48. Abu-Sbeih H, Ali FS, Qiao W, et al. Immune checkpoint inhibitor-induced colitis as a  
650 predictor of survival in metastatic melanoma. *Cancer Immunol Immunother.* 2019;68(4):553-  
651 561. doi:10.1007/s00262-019-02303-1
- 652 49. Abu-Sbeih H, Ali FS, Alsaadi D, et al. Outcomes of vedolizumab therapy in patients with  
653 immune checkpoint inhibitor–induced colitis: a multi-center study. *Journal for*  
654 *ImmunoTherapy of Cancer.* 2018;6(1):142. doi:10.1186/s40425-018-0461-4

- 655 50. Bergqvist V, Hertervig E, Gedeon P, et al. Vedolizumab treatment for immune checkpoint  
656 inhibitor-induced enterocolitis. *Cancer Immunol Immunother.* 2017;66(5):581-592.  
657 doi:10.1007/s00262-017-1962-6
- 658 51. Park R, Lopes L, Cristancho CR, Riano IM, Saeed A. Treatment-Related Adverse Events of  
659 Combination Immune Checkpoint Inhibitors: Systematic Review and Meta-Analysis.  
660 *Frontiers in Oncology.* 2020;10. Accessed March 15, 2023.  
661 <https://www.frontiersin.org/articles/10.3389/fonc.2020.00258>
- 662 52. Paz-Ares L, Ciuleanu TE, Cobo M, et al. First-line nivolumab plus ipilimumab combined with  
663 two cycles of chemotherapy in patients with non-small-cell lung cancer (CheckMate 9LA):  
664 an international, randomised, open-label, phase 3 trial. *The Lancet Oncology.*  
665 2021;22(2):198-211. doi:10.1016/S1470-2045(20)30641-0
- 666 53. Da L, Teng Y, Wang N, et al. Organ-Specific Immune-Related Adverse Events Associated  
667 With Immune Checkpoint Inhibitor Monotherapy Versus Combination Therapy in Cancer: A  
668 Meta-Analysis of Randomized Controlled Trials. *Front Pharmacol.* 2020;10:1671.  
669 doi:10.3389/fphar.2019.01671
- 670 54. Carretero-González A, Lora D, Ghanem I, et al. Comparative safety analysis of  
671 immunotherapy combined with chemotherapy versus monotherapy in solid tumors: a meta-  
672 analysis of randomized clinical trials. *Oncotarget.* 2019;10(35):3294-3301.  
673 doi:10.18632/oncotarget.26908
- 674 55. Zhuo M, Chi Y, Wang Z. The adverse events associated with combination immunotherapy in  
675 cancers: Challenges and chances. *Asia-Pacific Journal of Clinical Oncology.*  
676 2020;16(5):e154-e159. doi:10.1111/ajco.13365
- 677 56. Felip E, Altorki N, Zhou C, et al. Adjuvant atezolizumab after adjuvant chemotherapy in  
678 resected stage IB–IIIA non-small-cell lung cancer (IMpower010): a randomised, multicentre,  
679 open-label, phase 3 trial. *The Lancet.* 2021;398(10308):1344-1357. doi:10.1016/S0140-  
680 6736(21)02098-5
- 681 57. O'Brien M, Paz-Ares L, Marreaud S, et al. Pembrolizumab versus placebo as adjuvant  
682 therapy for completely resected stage IB–IIIA non-small-cell lung cancer  
683 (PEARLS/KEYNOTE-091): an interim analysis of a randomised, triple-blind, phase 3 trial.  
684 *The Lancet Oncology.* 2022;23(10):1274-1286. doi:10.1016/S1470-2045(22)00518-6
- 685 58. Luke JJ, Rutkowski P, Queirolo P, et al. Pembrolizumab versus placebo as adjuvant therapy  
686 in completely resected stage IIB or IIC melanoma (KEYNOTE-716): a randomised, double-  
687 blind, phase 3 trial. *The Lancet.* 2022;399(10336):1718-1729. doi:10.1016/S0140-  
688 6736(22)00562-1
- 689 59. Klein RJ, Gümüş ZH. Are polygenic risk scores ready for the cancer clinic?-a perspective.  
690 *Transl Lung Cancer Res.* 2022;11(5):910-919. doi:10.21037/tlcr-21-698
- 691 60. Lewis ACF, Green RC. Polygenic risk scores in the clinic: new perspectives needed on  
692 familiar ethical issues. *Genome Medicine.* 2021;13(1):14. doi:10.1186/s13073-021-00829-7
- 693 61. Lewis ACF, Green RC, Vassy JL. Polygenic risk scores in the clinic: Translating risk into  
694 action. *HGG Adv.* 2021;2(4):100047. doi:10.1016/j.xhgg.2021.100047
- 695 62. Martin AR, Kanai M, Kamatani Y, Okada Y, Neale BM, Daly MJ. Clinical use of current  
696 polygenic risk scores may exacerbate health disparities. *Nat Genet.* 2019;51(4):584-591.  
697 doi:10.1038/s41588-019-0379-x
- 698 63. Anderson JR, Cain KC, Gelber RD. Analysis of survival by tumor response. *JCO.*  
699 1983;1(11):710-719. doi:10.1200/JCO.1983.1.11.710
- 700 64. Anderson JR, Cain KC, Gelber RD. Analysis of Survival by Tumor Response and Other  
701 Comparisons of Time-to-Event by Outcome Variables. *JCO.* 2008;26(24):3913-3915.  
702 doi:10.1200/JCO.2008.16.1000
- 703 65. Morgan CJ. Landmark analysis: A primer. *J Nucl Cardiol.* 2019;26(2):391-393.  
704 doi:10.1007/s12350-019-01624-z

- 705 66. Bycroft C, Freeman C, Petkova D, et al. The UK Biobank resource with deep phenotyping  
706 and genomic data. *Nature*. 2018;562(7726):203-209. doi:10.1038/s41586-018-0579-z  
707 67. de Lange KM, Moutsianas L, Lee JC, et al. Genome-wide association study implicates  
708 immune activation of multiple integrin genes in inflammatory bowel disease. *Nat Genet*.  
709 2017;49(2):256-261. doi:10.1038/ng.3760  
710 68. Cook S, Choi W, Lim H, et al. Accurate imputation of human leukocyte antigens with  
711 CookHLA. *Nat Commun*. 2021;12(1):1264. doi:10.1038/s41467-021-21541-5  
712 69. Choi W, Luo Y, Raychaudhuri S, Han B. HATK: HLA analysis toolkit. *Bioinformatics*.  
713 2021;37(3):416-418. doi:10.1093/bioinformatics/btaa684  
714 70. Brown WM, Pierce J, Hilner JE, et al. Overview of the MHC fine mapping data. *Diabetes*  
715 *Obes Metab*. 2009;11 Suppl 1(0 1):2-7. doi:10.1111/j.1463-1326.2008.00997.x  
716

## 717 Funding

718 This work was supported by the National Institutes of Health R01-CA227466 and K24-  
719 CA169004 to E.Ziv; C.M.Lovly was supported in part by NIH NCI UG1CA233259,  
720 P01CA129243, and P30CA068485; R.Thummalappalli was supported by T32-  
721 CA009207; The Lusi Wong Fund, Posluns Fund, Alan Brown Chair in Molecular  
722 Genomics, Princess Margaret Cancer Foundation were awarded to G. Liu for this work;  
723 M.C. Aldrich was supported in part by R01-CA227466, U01CA253560, R01CA251758  
724 and the Vanderbilt Institute for Clinical and Translational Research (UL1TR002243); Z.  
725 Quandt was supported by the American Diabetes Association Grant (1-19-PDF-131;  
726 A.J.Schoenfeld, D.Faleck were supported by the Memorial Sloan Kettering Cancer  
727 Center Support Grant/Core (P30-CA008748), the Druckenmiller Center for Lung Cancer  
728 Research at Memorial Sloan Kettering Cancer Center. The samples and/or dataset(s)  
729 used for the analyses described were obtained from Vanderbilt University Medical  
730 Center's BioVU which is supported by numerous sources: institutional funding, private  
731 agencies, and federal grants. These include the NIH funded Shared Instrumentation  
732 Grant S10OD017985 and S10RR025141; and CTSA grants UL1TR002243,  
733 UL1TR000445, and UL1RR024975. Genomic data are also supported by investigator-  
734 led projects that include U01HG004798, R01NS032830, RC2GM092618,  
735 P50GM115305, U01HG006378, U19HL065962, R01HD074711; and additional funding  
736 sources listed at <https://victr.vumc.org/biovu-funding/>

737

## 738 Acknowledgements

739 Princess Margaret Lung Group: Natasha B. Leighl, Penelope A. Bradbury, Frances A.  
740 Shepherd, Adrian G. Sacher, Lawson Eng. Megan H. Murray's work on this project was  
741 completed in August 2022 while she was working at Vanderbilt University Medical  
742 Center.

743

744

745

746

747  
748  
749  
750  
751  
752  
753  
754  
755  
756  
757  
758  
759  
760  
761  
762  
763  
764  
765  
766  
767  
768  
769  
770  
771  
772  
773  
774  
775  
776  
777  
778  
779  
780  
781  
782  
783  
784  
785  
786  
787  
788  
789

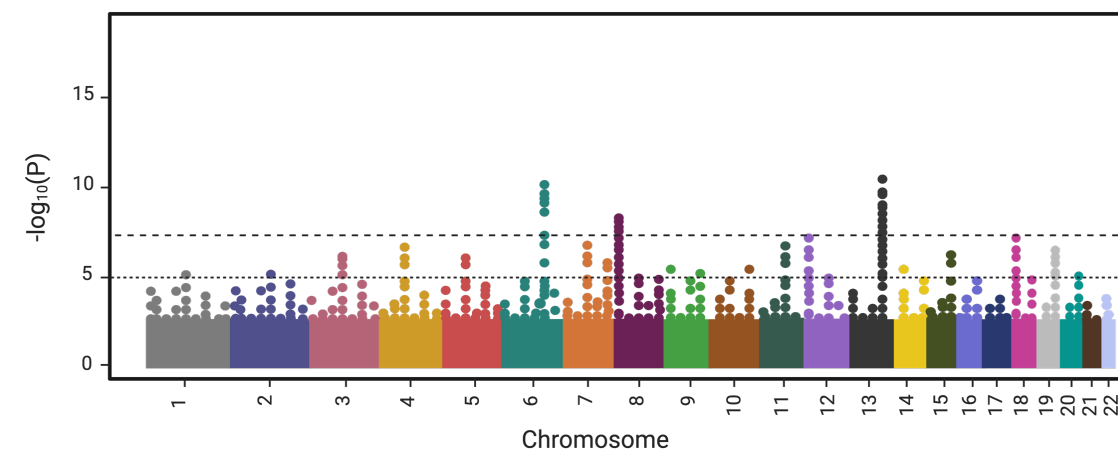
**Figure 1: Overview of the analytical pipeline**

Development and validation of the polygenic risk scores (PRSs): LDPred2 method was used to tune the parameters for the PRS for ulcerative colitis and Crohn’s disease (PRS<sub>UC</sub>, PRS<sub>CD</sub>) in 70% of the UK Biobank, using the summary statistics from the largest genome-wide association study of UC and CD. The PRSs were then tested in the remaining 30% of the UK Biobank and validated in BioVU. In the next step, the role of PRS<sub>UC</sub> and PRS<sub>CD</sub> on all-grade and severe immune checkpoint inhibitor-mediated colitis (IMC) was evaluated in a cohort of 1,316 non-small cell lung cancer patients who received at least one dose of immune checkpoint inhibitor therapy. Furthermore, replication was conducted using 873 pancancer patients treated with immune checkpoint inhibitors obtained from BioVU. Finally, associations of all-grade and severe IMC along with PRS<sub>UC</sub> and PRS<sub>CD</sub> on progression-free survival (PFS) and overall survival (OS) were assessed.

790  
791  
792  
793  
794  
795  
796  
797  
798  
799  
800  
801  
802  
803  
804

**Polygenic risk score (PRS) for  
Ulcerative Colitis (UC) and Crohn's Disease (CD)**

**GWAS Summary Statistics (de Lange *et al.*, 2017)**  
(12194 CD cases, 12366 UC cases and 28072 controls)



$$PRS = \sum_{i=1}^n \beta_n SNP_n$$

**LDPred2**

Parameter Tuning

UKB (70%)



918 CD cases  
1970 UC cases  
11412 controls

Testing

UKB (30%)



394 CD cases  
844 UC cases  
4891 controls

Validation

BioVU



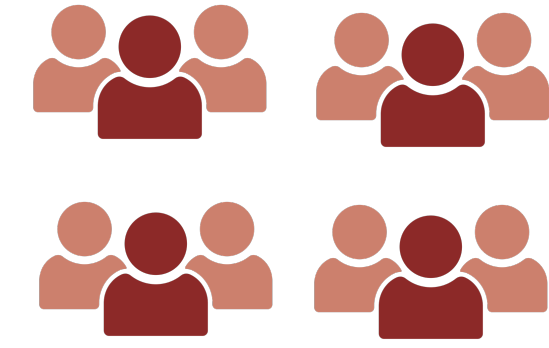
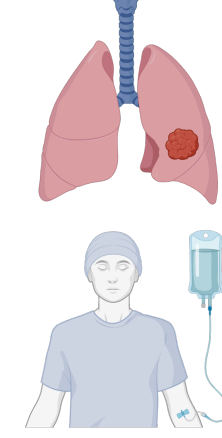
1420 CD cases  
459 UC cases  
20876 controls

medRxiv preprint doi: <https://doi.org/10.1101/2023.05.15.23289680>; this version posted May 15, 2023. The copyright holder for this preprint (which was not certified by peer review) is the author/funder, who has granted medRxiv a license to display the preprint in perpetuity. It is made available under a [CC-BY-NC-ND 4.0 International license](https://creativecommons.org/licenses/by-nc-nd/4.0/).

**PRS as a Predictor of Immune Checkpoint  
Inhibitor-Mediated Colitis (IMC)**

**Genetics of immune-related adverse events and  
Response to Immunotherapy (GeRI) cohort**

**1316 NSCLC patients**



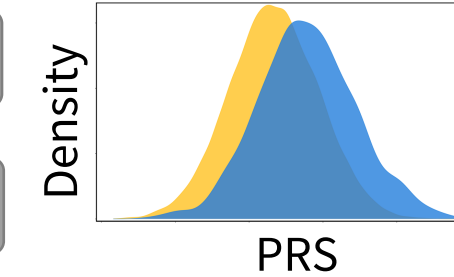
All Grade IMC (55 cases)

Severe IMC (32 cases)

**PRS analysis**

PRS<sub>UC</sub>

PRS<sub>CD</sub>



All Grade IMC

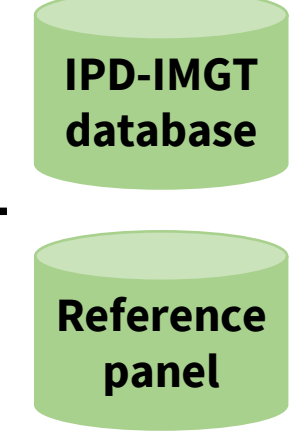
Severe IMC

**HLA imputation and analysis**

Individuals

AATAACACCA  
AGCACTGATT  
TGTCACTAGA  
AGTAGTTTAA

Genotypes  
(chr6:29-34)



CookHLA

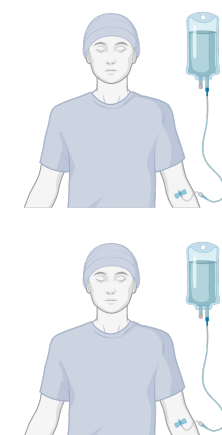
B\*03:01  
DQB1\*15:01  
DPB1\*13:01  
A\*35:02  
HLA Alleles

Individuals

**Replication: PRS<sub>UC</sub> as a Predictor of IMC and  
Meta-analysis**

**BioVU pan-cancer immune checkpoint inhibitor  
cohort**

**873 pan-cancer patients**

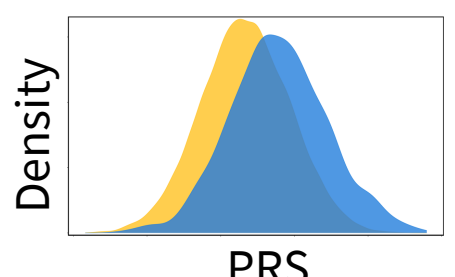


All Grade IMC (59 cases)

Severe IMC (45 cases)

**PRS analysis**

PRS<sub>UC</sub>



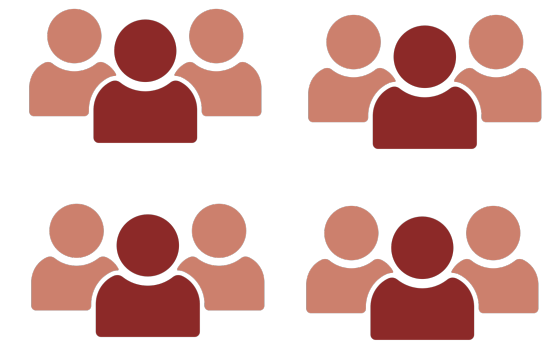
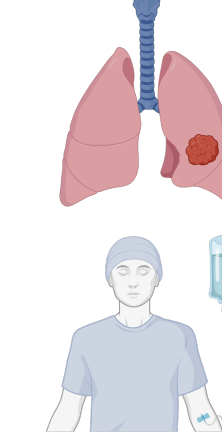
All Grade IMC

Severe IMC

**IMC and PRS as a Predictor of Overall Survival (OS)  
and Progression-Free Survival (PFS)**

**Genetics of immune-related adverse events and  
Response to Immunotherapy (GeRI) cohort**

**1316 NSCLC patients**



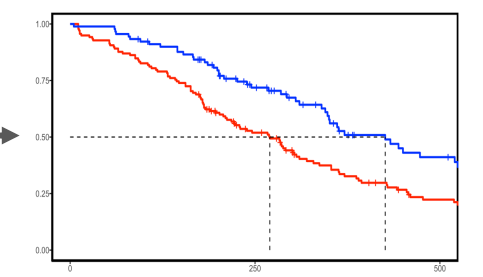
Progression (999 cases)

Deceased (639 cases)

**IMC as predictor of PFS and OS**

All Grade IMC

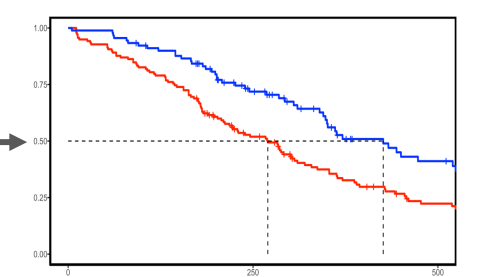
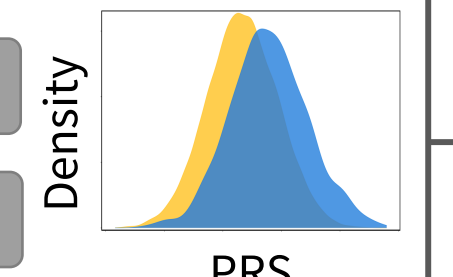
Severe IMC



**PRS as predictor of PFS and OS**

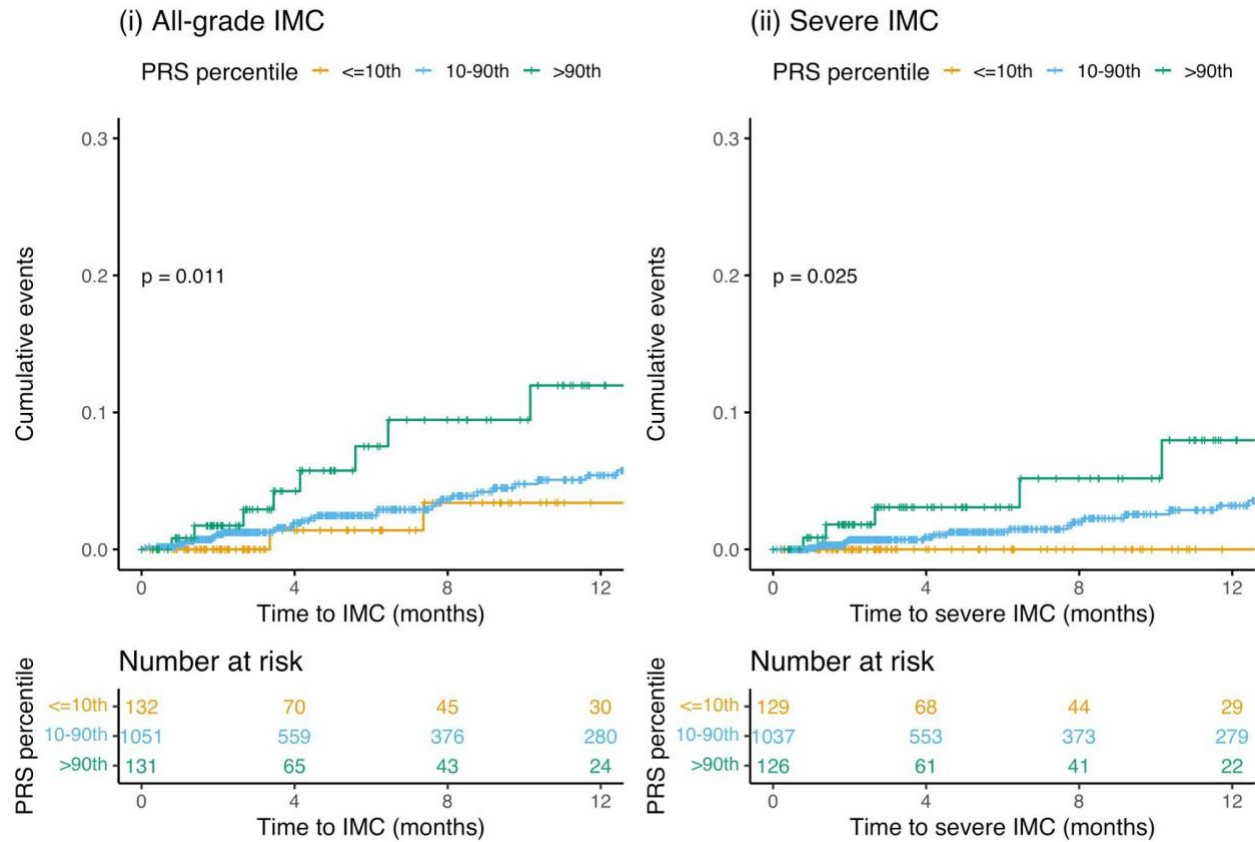
PRS<sub>UC</sub>

PRS<sub>CD</sub>

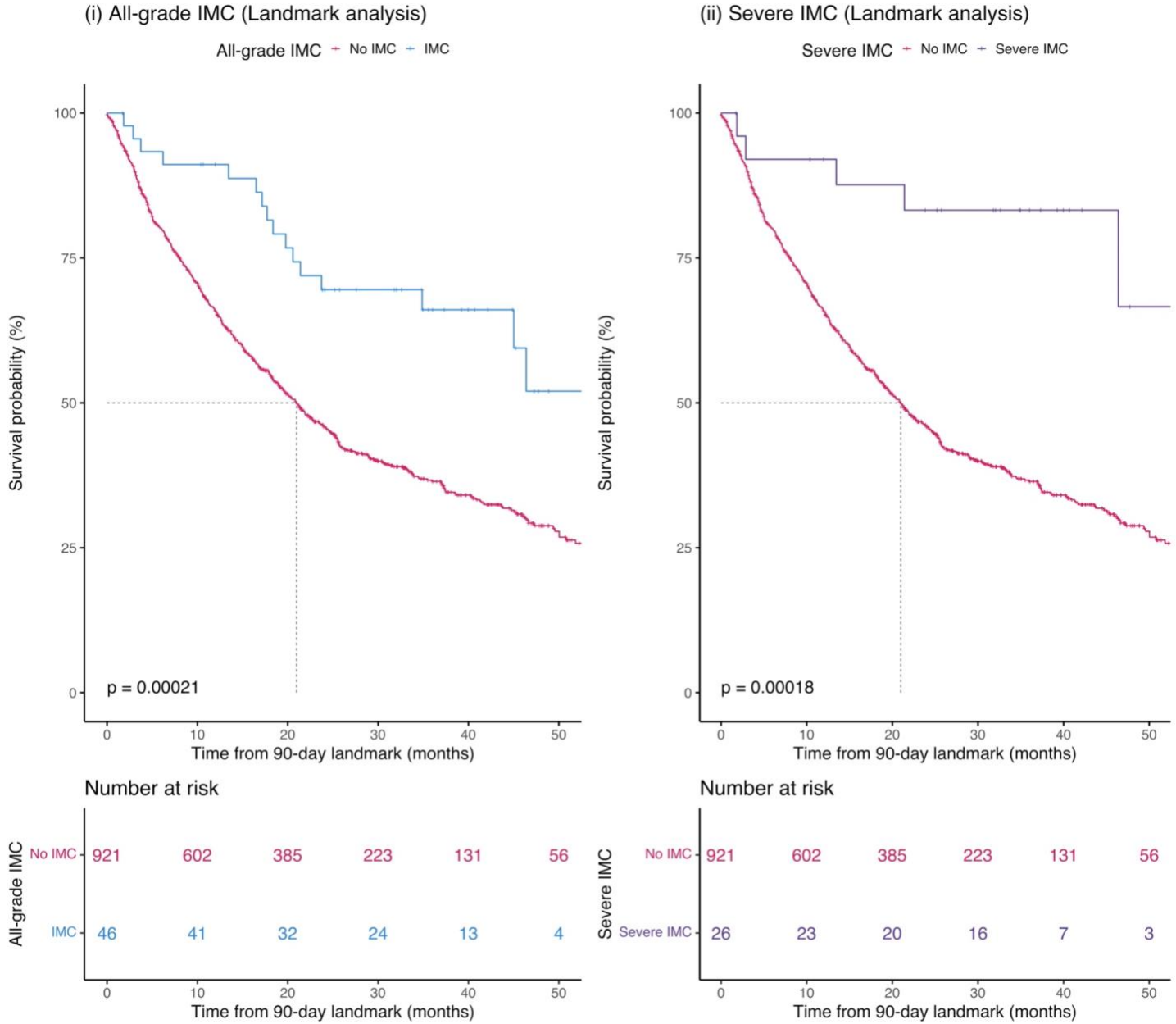




**Figure 2: Cumulative incidence curves of (i) All-grade immune checkpoint inhibitor-mediated colitis (IMC) and (ii) Severe IMC by categories of polygenic risk score of ulcerative colitis (PRSUc) in the entire GeRI cohort. PRSUc is categorized as ≤10th percentile (low genetic risk), 10-90th percentile (average genetic risk), and >90th percentile (high genetic risk).**



**Figure 3: Immune checkpoint inhibitor-mediated colitis (IMC) as a predictor of overall survival (OS) in the entire GeRI cohort (i) All-grade IMC, (ii) Severe IMC. Kaplan–Meier survival curves are unadjusted and compare those who had an IMC (all-grade or severe) with those who did not have an IMC (No IMC). The p-values in the graph represent the log-rank p-values and the dotted line represents median survival time. Graphs are obtained from Cox proportional hazards models with 90-day landmark.**



**Table 1: Characteristics of the entire GeRI cohort and by recruiting site**

<b>Characteristics</b>	<b>GeRI</b>	<b>MSKCC</b>	<b>PM</b>	<b>UCSF</b>	<b>VUMC</b>
	(n=1316)	(n=752)	(n=266)	(n=31)	(n=267)
<b>Mean age at diagnosis (SD)</b>	65.24 (10.26)	66.13 (10.52)	64.60 (10.48)	65.30 (9.71)	63.33 (9.01)
<b>Sex n (%)</b>					
<i>Male</i>	659 (50.1)	353 (46.9)	142 (53.4)	12 (38.7)	152 (56.9)
<i>Female</i>	657 (49.9)	399 (53.1)	124 (46.6)	19 (61.3)	115 (43.1)
<b>Self-reported race</b>					
White	914 (69.5)	469 (64.0)	167 (62.8)	31 (100)	246 (92.1)
Asian	89 (6.8)	34 (4.6)	46 (17.3)	-	2 (0.7)
Black	70 (5.3)	41 (5.6)	10 (3.8)	-	14 (5.2)
Other	16 (1.2)	20 (0.2)	52 (4.4)	-	3 (1.1)
Missing	227 (17.2)	188 (25.6)	31 (11.7)	-	2 (0.7)
<b>Histology n (%)</b>					
<i>Adenocarcinoma</i>	949 (72.1)	580 (77.1)	193 (72.6)	24 (77.4)	152 (56.9)

<i>Squamous cell carcinoma</i>	221 (16.8)	111 (14.8)	46 (17.3)	5 (16.1)	59 (22.1)
<i>Other</i>	146 (11.1)	61 (8.1)	27 (10.2)	2 (6.5)	56 (21.0)
<b>Type of therapy n (%)</b>					
<i>Anti PD-1/PD-L1 therapy</i>	1198 (91.0)	671 (89.2)	257 (96.6)	31 (100.0)	239 (89.5)
<i>Anti PD-1/PD-L1 + Anti CTLA4 therapy</i>	118 (9.0)	81 (10.8)	9 (3.4)	0 (0.0)	28 (10.5)
<b>IMC n (%)</b>					
<i>Yes</i>	55 (4.2)	32 (4.3)	13 (4.9)	1 (3.2)	9 (3.4)
<i>No</i>	1261 (95.8)	720 (95.7)	253 (95.1)	30 (96.8)	258 (96.6)
<b>Mean time in months to IMC (SD)</b>					
	9.85 (13.37)	9.78 (13.42)	11.07 (13.75)	15.28 (-)	8.19 (11.77)
<b>Severe IMC* n (%)</b>					
<i>Yes</i>	32 (2.4)	15 (2.0)	10 (3.8)	1 (3.2)	6 (2.2)
<i>No</i>	1261 (95.8)	720 (95.7)	253 (95.1)	30 (96.8)	258 (96.6)
<b>Progression n (%)</b>					
<i>Yes</i>	999 (75.9)	640 (85.1)	177 (66.5)	22 (71.0)	160 (59.9)

<i>No</i>	315 (23.9)	112 (14.9)	89 (33.5)	8 (25.8)	106 (39.7)
<i>Missing</i>	2 (0.2)	0 (0.0)	0 (0.0)	1 (3.2)	1 (0.4)
<b>Mean time in months to progression (SD)</b>	10.02 (13.44)	10.11 (13.68)	9.67 (11.13)	27.07 (23.67)	8.18 (11.74)
<b>Overall survival n (%)</b>					
<i>Alive at last follow-up</i>	410 (31.2)	262 (34.8)	131 (49.2)	17 (54.8)	0 (0.0)
<i>Deceased</i>	639 (48.6)	490 (65.2)	135 (50.8)	14 (45.2)	0 (0.0)
<i>Missing</i>	267 (20.3)	0 (0.0)	0 (0.0)	0 (0.0)	267 (100.0)
<b>Mean time in months to death (SD)</b>	22.09 (17.81)	21.71 (16.99)	20.84 (18.57)	43.37 (18.88)	-

\* The combined percentage does not add to 100 because mild-to-moderate grade IMC were excluded from this grouping. MSKCC, Memorial Sloan Kettering Cancer Center; PM, Princess Margaret Cancer Centre; UCSF, University of California San Francisco; VUMC, Vanderbilt University Medical Center; SD: Standard deviation; IMC: Immune checkpoint inhibitor-mediated colitis

**Table 2: Polygenic risk score (PRS) of ulcerative colitis (UC) and Crohn’s disease (CD) as a predictor of time to development of all-grade and severe immune checkpoint inhibitor-mediated colitis (IMC) in the entire GeRI cohort, using Cox proportional hazards models and stratified analysis assessing the association between PRS<sub>UC</sub> and all-grade/severe IMC by type of therapy and lung cancer histology**

<i>PRS<sup>a</sup></i>	<i>All-grade IMC</i>			<i>Severe IMC</i>		
	HR per SD	95% CI	<i>P</i>	HR per SD	95% CI	<i>P</i>
PRS <sub>UC</sub>	<b>1.34</b>	<b>1.02-1.76</b>	<b>0.04</b>	<b>1.62</b>	<b>1.12-2.35</b>	<b>0.01</b>
PRS <sub>CD</sub>	0.97	0.72-1.32	0.87	0.99	0.66-1.46	0.94
<b>Stratified analysis restricted to PRS<sub>UC</sub> and All-grade and Severe IMC</b>						
<i>Therapy<sup>b</sup></i>	<i>All-grade IMC</i>			<i>Severe IMC</i>		
	HR per SD	95% CI	<i>P</i>	HR per SD	95% CI	<i>P</i>
Anti-PD1/Anti-PD-L1 monotherapy	1.33	0.99-1.78	0.06	<b>1.51</b>	<b>1.01-2.27</b>	<b>0.04</b>
Anti-PD1/Anti-PD-L1 + Anti-CTLA4	1.64	0.67-4.03	0.28	<b>4.31</b>	<b>1.08-17.24</b>	<b>0.03</b>
<i>Histology<sup>c</sup></i>	<i>All-grade IMC</i>			<i>Severe IMC</i>		
	HR per SD	95% CI	<i>P</i>	HR per SD	95% CI	<i>P</i>
Adenocarcinoma	<b>1.43</b>	<b>1.06-1.93</b>	<b>0.02</b>	<b>2.12</b>	<b>1.37-3.26</b>	<b>6x10<sup>-04</sup></b>
Squamous cell carcinoma	0.79	0.16-3.78	0.76	0.79	0.16-3.78	0.76

<sup>a</sup>Models are adjusted for age at diagnosis, sex, histology, type of therapy, recruiting site, and 5 principal components. <sup>b</sup>Models are adjusted for age at diagnosis, sex, histology, recruiting site, and 5 principal components. <sup>c</sup>Models are adjusted for age at diagnosis, sex, type of therapy, recruiting site, and 5 principal components. PRS: Polygenic risk score, IMC: Immune checkpoint inhibitor-mediated colitis, HR: Hazard ratio, SD: Standard deviation, CI: Confidence interval, UC: Ulcerative colitis, CD: Crohn’s disease

**Table 3: Polygenic risk score (PRS) of ulcerative colitis (UC) as a predictor of all-grade and severe immune checkpoint inhibitor-mediated colitis (IMC) in the replication cohort (BioVU) and meta-analysis (GeRI and BioVU), using logistic regression model and stratified analysis assessing the association between PRS<sub>UC</sub> and all-grade/severe IMC by type of therapy**

<i>IMC<sup>a</sup></i>	<i>Replication cohort BioVU</i>			<i>Meta-analysis GeRI + BioVU</i>		
	OR per SD	95% CI	<i>P</i>	OR per SD	95% CI	<i>P</i>
<i>All-grade</i>	1.29	0.98-1.69	0.07	<b>1.35</b>	<b>1.12-1.64</b>	<b>2x10<sup>-3</sup></b>
<i>Severe</i>	<b>1.39</b>	<b>1.02-1.90</b>	<b>0.04</b>	<b>1.49</b>	<b>1.18-1.88</b>	<b>9x10<sup>-4</sup></b>
<b>Stratified analysis by type of therapy: All-grade IMC</b>						
<i>Therapy<sup>b</sup></i>	<i>Replication cohort BioVU</i>			<i>Meta-analysis GeRI + BioVU</i>		
<i>Anti-PD1/Anti-PD-L1 monotherapy</i>	1.25	0.88-1.78	0.21	<b>1.35</b>	<b>1.07-1.69</b>	<b>0.01</b>
<i>Anti-PD1/Anti-PD-L1 + Anti-CTLA4</i>	2.04	0.79-5.28	0.14	1.80	0.95-3.41	0.07
<i>Anti-CTLA4 monotherapy</i>	0.92	0.67-1.26	0.59	-	-	-
<b>Stratified analysis by type of therapy: Severe IMC</b>						
<i>Therapy<sup>b</sup></i>	<i>Replication cohort BioVU</i>			<i>Meta-analysis GeRI + BioVU</i>		
<i>Anti-PD1/Anti-PD-L1 monotherapy</i>	1.47	0.96-2.25	0.08	<b>1.48</b>	<b>1.10-1.98</b>	<b>9x10<sup>-3</sup></b>
<i>Anti-PD1/Anti-PD-L1 + Anti-CTLA4</i>	1.89	0.74-4.86	0.19	<b>2.20</b>	<b>1.07-4.53</b>	<b>0.03</b>
<i>Anti-CTLA4 monotherapy</i>	1.00	0.71-1.40	0.99	-	-	-

<sup>a</sup>Models are adjusted for age at diagnosis, sex, type of therapy, and 5 principal components. <sup>b</sup>Models are adjusted for age at diagnosis, sex, and 5 principal components. IMC: Immune checkpoint inhibitor-mediated colitis, OR: Odds ratio, SD: Standard deviation, CI: Confidence interval,

**Table 4: All-grade and severe immune checkpoint inhibitor-mediated colitis (IMC) as predictors of progression-free survival (PFS) and overall survival (OS) in the entire GeRI cohort, using Cox proportional hazards models with 90-day landmark**

<i>IMC</i>	<i>PFS</i>			<i>OS</i>		
	<i>HR</i>	<i>95% CI</i>	<i>P value</i>	<i>HR</i>	<i>95% CI</i>	<i>P value</i>
<b>All-grade</b>	0.80	0.55-1.17	0.26	<b>0.40</b>	<b>0.24-0.66</b>	<b>3x10<sup>-04</sup></b>
<b>Severe</b>	0.61	0.34-1.09	0.09	<b>0.23</b>	<b>0.09-0.55</b>	<b>9x10<sup>-04</sup></b>

All models are adjusted for age at diagnosis, sex, histology, type of therapy, recruiting site, and 5 principal components. IMC: Immune checkpoint inhibitor-mediated colitis, PFS: Progression free survival, OS: Overall survival, HR: Hazards ratio, CI: Confidence interval



**Table 5: Polygenic risk scores of ulcerative colitis (PR<sub>SUC</sub>) and Crohn's disease (PR<sub>SCD</sub>) as predictors of progression-free survival (PFS) and overall survival (OS) in the GeRI cohort, using Cox proportional hazards models**

<i>PRS</i>	<i>PFS</i>			<i>OS</i>		
	HR per SD	95% CI	<i>P</i> value	HR per SD	95% CI	<i>P</i> value
PR <sub>SUC</sub>	1.00	0.94-1.07	0.99	1.01	0.93-1.09	0.91
PR <sub>SCD</sub>	0.98	0.91-1.05	0.50	1.02	0.93-1.11	0.68

All models are adjusted for age at diagnosis, sex, histology, type of therapy, recruiting site, and 5 principal components. PRS: Polygenic risk score, PFS: Progression free survival, OS: Overall survival, HR: Hazards ratio, SD: Standard deviation, CI: Confidence interval, UC: Ulcerative colitis, CD: Crohn's disease