

1 **Diabetes and Incidence of Breast Cancer and its Molecular Subtypes: A**
2 **Systematic Review and Meta-Analysis**

3 **Short title:** *Diabetes and breast cancer risk*

4
5 Fanxiu Xiong¹, Qichen Dai², Sihan Zhang³, Stephen Bent^{1,4}, Peggy Tahir⁵, Erin L. Van
6 Blarigan^{1,6}, Stacey A. Kenfield^{1,6}, June M. Chan^{1,6}, Gabriela Schmajuk⁷, Rebecca E.
7 Graff^{1,a}

8
9 ¹ Department of Epidemiology and Biostatistics, University of California, San Francisco,
10 San Francisco, CA, USA

11 ² Department of Breast Surgery, National Cancer Center/Cancer Hospital, Chinese
12 Academy of Medical Sciences and Peking Union Medical College, Beijing, China.

13 ³ Department of Urology, Tongji Hospital, Tongji Medical College, Huazhong University
14 of Science and Technology, Wuhan, China.

15 ⁴Department of Psychiatry, University of California, San Francisco, San Francisco, CA,
16 USA.

17 ⁵UCSF Library, University of California, San Francisco, San Francisco, CA, USA

18 ⁶Department of Urology, University of California, San Francisco, San Francisco, CA,
19 USA.

20 ⁷Division of Rheumatology, Department of Medicine, University of California, San
21 Francisco, San Francisco, CA, USA.

22

23 ^a Corresponding Author:

24 Rebecca E Graff, ScD

25 Department of Epidemiology and Biostatistics

26 University of California, San Francisco, School of Medicine

27 San Francisco, CA 94143

28 E-mail: Rebecca.Graff@ucsf.edu

29

30 **ACKNOWLEDGEMENTS**

31 We gratefully acknowledge Dr. Chiung-Yu Huang and Dr. Thomas Newman for their
32 critical feedback.

33

34 **FUNDING**

35 JMC receives funding from the Cancer League Foundation. REG is supported by a
36 Young Investigator Award from the Prostate Cancer Foundation.

37

38 **COMPETING INTERESTS**

39 JMC declares that her husband is a full-time employee of Adela, Inc. and a prior
40 employee of GRAIL (within the past three years).

41

42 **AUTHOR CONTRIBUTIONS**

43 FX, GS, and REG conceived and designed the study. FX, SB, PT, GS, and REG
44 developed the methods. FX, QD, SZ reviewed and extracted the data and performed
45 the quality rating of studies. FX, SB, ELV, SAK, JMC, and REG interpreted the results.
46 FX and REG wrote the initial draft of the manuscript. GS and REG supervised this
47 study. All authors revised it for critically important content and read and gave approval
48 of the final version.

49

50 **WORD COUNTS**

- 51 1) Abstract: 303
52 2) Main text (excluding references and legends): 3559

53

54 **TOTAL NUMBER OF EACH**

- 55 1) References: 47 for main text and 72 for tables
56 2) Tables: 2
57 3) Figures: 3

58 **Abstract**

59 Diabetes mellitus (DM) has been proposed to be positively associated with breast
60 cancer (BCa) risk due to shared risk factors, metabolic dysfunction, and use of
61 antidiabetic medications. We conducted a systematic review and meta-analysis to
62 evaluate the association between DM and BCa risk. We searched PubMed, Embase,
63 and Web of Science for cohort and case-control studies assessing the association
64 between DM and BCa published before December 10, 2021. Two reviewers
65 independently screened the studies for inclusion, abstracted article data, and rated
66 study quality. Random effects models were used to estimate summary risk ratios (RRs)
67 and 95% confidence intervals (CIs). From 8396 articles identified in the initial search, 70
68 independent studies were included in the meta-analysis. DM was associated with an
69 overall increased risk of BCa (RR=1.20, 95% CI: 1.11-1.29). The 24 case-control
70 studies demonstrated a stronger association (RR=1.26, 95% CI: 1.13-1.40) than the 46
71 cohort studies (RR=1.15, 95% CI: 1.05-1.27). Studies reporting risk by menopausal
72 status found that postmenopausal women had an elevated risk of developing BCa
73 (RR=1.12, 95% CI: 1.07-1.17). No association between DM and BCa risk was observed
74 among premenopausal women (RR=0.95, 95% CI: 0.85-1.05). In addition, DM was
75 associated with significantly increased risks of estrogen receptor (ER)+ (RR=1.09, 95%
76 CI: 1.00-1.20), ER- (RR=1.16, 95% CI: 1.04-1.30), and triple negative BCa (RR=1.41,
77 95% CI: 1.01-1.96). The association estimate for human epidermal growth factor 2-
78 positive BCa was also positive (RR=1.21, 95% CI: 0.52-2.82), but the confidence
79 interval was wide and crossed the null. Our meta-analysis confirms a modest positive
80 association between DM and BCa risk. In addition, our results suggest that the DM and

81 BCa association may be modified by menopausal status, and DM may be differentially
82 associated with BCa subtypes defined by receptor status. Additional studies are
83 warranted to investigate the mechanisms underlying these associations and any
84 influence of DM on BCa receptor expression.

85 **KEYWORDS:** Diabetes; breast cancer; molecular subtypes; menopausal status; body
86 mass index

87 **1 INTRODUCTION**

88 Among women worldwide, breast cancer (BCa) is the most prevalent malignancy and
89 the leading cause of cancer-related death[1]. In 2020, there were an estimated 2.3
90 million new cases of female BCa and more than half a million deaths from disease[2].
91 Obesity is an established risk factor for BCa, particularly in postmenopausal women[3].
92 Given the relationship between obesity and BCa, it stands to reason that varying
93 metabolic abnormalities could be associated with BCa risk. Diabetes mellitus (DM) is
94 one of the most common metabolic abnormalities globally, such that 463 million people
95 were living with DM in 2019[4]. DM and its complications increase the risk of
96 cardiovascular disease, neuropathy, retinopathy, kidney failure, and overall mortality[5],
97 but its relationship with BCa has not been firmly established.

98 Due to shared risk factors, metabolic dysfunction in diabetic patients, and
99 antidiabetic medication use, it has been proposed that DM could be positively
100 associated with subsequent BCa risk[6]. Indeed, the potential role of DM in BCa
101 incidence has been widely investigated. The largest existing meta-analysis, which was
102 published in 2012 and included 40 observational studies, indicated a 20% excess risk of
103 BCa among women with DM[7]. Heterogeneity among studies included in this meta-
104 analysis was substantial, and studies published since have yielded inconsistent
105 findings. In addition, studies investigating associations between DM and specific BCa
106 molecular subtypes have been inconclusive. Given that BCa is a heterogeneous
107 disease – often grouped according to joint expression of hormonal and growth
108 receptors, including estrogen receptor (ER), progesterone receptor (PR), and human

109 epidermal growth factor receptor 2 (HER2)[8] – it is important to consider possible
110 distinctions in metabolic etiology.

111 A solidified understanding of the relationship between DM and the risk of BCa
112 and its subtypes is important for clarifying BCa etiology and informing screening
113 decisions. Therefore, we reviewed and synthesized the findings from relevant
114 epidemiologic studies to achieve summary estimates for associations between DM and
115 risk of BCa overall and of BCa defined by receptor expression.

116 **2 MATERIALS AND METHODS**

117 **2.1 Research question**

118 Toward the formulation of a coherent research question, we implemented the
119 Population, Interventions or Exposure, Comparator, Outcome, Study Design (PICOS)
120 approach, as suggested by PRISMA guidelines.

121

122 *Population*

123 Women aged 18 years or older.

124

125 *Exposure*

126 DM identified prior to any detection of BCa. Gestational DM, which only occurs during
127 pregnancy, was not included.

128

129 *Comparison*

130 Lacking a diagnosis of DM prior to any detection of BCa.

131

132 *Outcome*

133 Malignant BCa, identified by self-report or from medical records.

134

135 *Study Design*

136 For our primary analyses, cohort and case-control studies were included. To assess
137 associations between DM and BCa molecular subtypes, all other study designs were
138 considered.

139 **2.2 Literature search**

140 This systematic review and meta-analysis was conducted according to the Preferred
141 Reporting Item for Systematic Reviews and Meta-analysis 2020 (PRISMA 2020)
142 statement[9]. The protocol was registered in the International Prospective Register of
143 Systematic Reviews (PROSPERO CRD42022311936).

144 We conducted a comprehensive database search regarding DM and BCa risk in
145 PubMed (National Library of Medicine), Embase (Elsevier), and Web of Science
146 (Clarivate Analytics). We focused on three main concepts: diabetes, BCa, and
147 associated risks and incidence. Appropriate synonyms were developed for each
148 concept, and we used both keywords and index terms (e.g., Mesh, Emtree) appropriate
149 to each database. Full search strategies are included in the Search Appendix. Human
150 studies that were published by Dec 10, 2021 and written in English were included. We
151 also reviewed the reference section of studies included in previously published
152 systematic reviews regarding DM and BCa to identify additional studies that met the
153 eligibility criteria[7,10–14].

154 **2.3 Study selection**

155 Titles and abstracts were independently screened by two reviewers (FX and QD) to
156 identify potentially relevant epidemiologic studies. Full texts of potentially relevant
157 articles were retrieved and reviewed according to inclusion (PICOS) and exclusion
158 criteria (below). Disagreements that were not resolved by discussion between the two
159 reviewers were adjudicated by a third reviewer (SZ).

160 Studies were excluded if: they did not differentiate between benign and malignant
161 breast tumors; DM was diagnosed at the same time as or after BCa diagnosis; the
162 number of BCa cases in cohort studies or DM cases in case-control studies was less
163 than 10; they were not human studies; they were not written in English; or they were
164 case reports, review articles, meeting abstracts, or letters. When more than one study
165 was conducted in the same study population, only the most recent findings were
166 included.

167 **2.4 Data abstraction and quality assessment**

168 Two reviewers (FX and SZ) independently abstracted data from relevant articles using a
169 standardized form. Discrepancies were resolved by discussion with a third reviewer
170 (QD). Abstracted information included: first author, year of publication, study population,
171 study design, country of study, age range, follow-up length or calendar period, DM
172 assessment method, DM classification (i.e., any DM, type 1 DM (T1D), and/or type 2
173 DM (T2D)), BCa assessment method, BCa molecular subtypes, covariates, risk
174 estimates with corresponding 95% confidence intervals (CIs), and any association
175 measures within subgroups. Only estimates from fully-adjusted models were abstracted.

176 The Newcastle-Ottawa-Scale (NOS) was employed to evaluate the risk of bias in
177 selected cohort and case-control studies[15]. Briefly, the NOS consists of eight items
178 and is categorized into three domains: 1) selection of study population (4 items); 2) level
179 of comparability between the study groups (1 item); and 3) assessment of exposure for
180 case-control studies or outcome for cohort studies (3 items). One star could be awarded
181 for each item, with the exception of a possible two stars for the single comparability
182 item. Studies with stars of 8-9, 6-7, and 1-5 were deemed high-, medium-, and low-
183 quality, respectively.

184 **2.5 Statistical analysis**

185 If risk ratios (RRs) were not reported in contributing studies, we assumed that other risk
186 measures, such as odds ratios (ORs) and hazard ratios (HRs), numerically
187 approximated RRs under the rare disease assumption[16]. When contributing studies
188 only reported subgroup estimates (e.g., separate estimates for pre- and post-
189 menopausal women), we calculated summary estimates for these individual studies
190 before including them in our meta-analysis. To do so, we used fixed effects models
191 when heterogeneity between subgroups was not significant and random effects models
192 when heterogeneity was significant ($P < 0.05$).

193 For our meta-analysis, we estimated summary RRs and 95% CIs using random
194 effects models, to allow for differences in study populations and generate conservative
195 results. Heterogeneity across studies was assessed using 1) the I^2 statistic, with 0-25%,
196 25-75%, and >75% representing possibly unimportant, moderate, and substantial
197 heterogeneity, respectively, and 2) Cochran's Q statistic, with $P < 0.05$ as the threshold
198 for statistical significance. Leave-one-out sensitivity analyses were carried out to

199 evaluate the influence of each study on the overall summary estimate. A temporal
200 cumulative meta-analysis was also performed to show how the overall estimate
201 changed as each study was added in chronological order. We additionally performed
202 analyses stratified by study quality (high, medium, or low).

203 Publication bias was graphically assessed using a funnel plot. Duval and
204 Tweedie's trim-and-fill method was implemented based on the funnel plot to estimate
205 the influence of potentially missing studies on the summary estimate[17]. Begg's test
206 and Egger's test were also implemented to assess publication bias.

207 To explore potential sources of heterogeneity, separate analyses were performed
208 by study design (cohort study or case-control study), study region (Asia, Americas,
209 Europe, or Australia), year of publication (before or after the largest existing review,
210 published in 2012)[10], method of DM ascertainment (self-report or medical review),
211 adjustment for body mass index (BMI; no or yes), and adjustment for parity (no or yes).
212 Meta-regression analyses stratified by the aforementioned subgroups were then
213 performed to examine differences.

214 Some studies performed separate analyses in pre- and post-menopausal
215 women. We used random-effects models to estimate the association of DM with pre-
216 and post-menopausal BCa separately. If no information regarding menopausal status
217 was provided, we defined postmenopausal to be age 50 years or older[18]. In addition,
218 we examined associations between DM and BCa molecular subtypes. The subtypes
219 were grouped into four categories: ER-positive (ER+; regardless of PR/HER2 status),
220 ER-negative (ER-; regardless of PR/HER2 status), HER2-positive (HER2+; negative
221 ER/PR), and triple-negative (TN; negative ER/PR/ HER2)[19].

222 Hypothesis tests were 2-sided (unless otherwise specified) with a significance
223 threshold of 0.05. Statistical analyses were performed using Comprehensive Meta-
224 Analysis Version 3 (Biostat, Englewood, NJ 2013) and R Version 4.0.2.

225

226 **3 RESULTS**

227 **3.1 Literature search**

228 Initial searches of the databases yielded 10,773 publications. Assessment of references
229 in relevant reviews[7,10–14] yielded an additional 404 publications. After removing
230 duplicates and article types other than research articles, 3,893 publications remained.
231 After removing papers on the basis of title (n=3,150) or abstract (n=488) and excluding
232 reports (n = 23) which were inaccessible online, were conference abstracts with no full
233 text, or had titles or abstracts that do not correspond to those indexed by the search
234 databases, the full text of 232 reports that could be retrieved were reviewed. 70 studies
235 that met eligibility criteria were included in this review and meta-analysis. 2 additional
236 cross-sectional studies assessing molecular subtypes at the time of BCa diagnosis were
237 included in the review but not the meta-analysis. Figure 1 shows the PRISMA flowchart
238 for the study selection process.

239 **3.2 Study description and quality assessment**

240 Descriptive data for the selected studies are presented in Table 1. Of the 72 included
241 studies, 46 were cohort studies, 24 were case-control studies, and the other 2 were
242 cross-sectional studies evaluating BCa molecular subtypes. 24 studies were conducted
243 in Asia, 24 were conducted in the Americas, 21 were conducted in Europe, and 3 were

244 conducted in Australia. Population sizes varied substantially, ranging from 110 to
245 10,827,079 participants. The slim majority of studies assessed DM based on medical
246 reports (n=39), with some studies adopting a combination of self-report and clinical
247 identification (n=4). 10 studies differentiated T1D from T2D. With the exception of 5
248 studies, BCa was identified from clinical or cancer registry records. All studies adjusted
249 for age, 36 adjusted for BMI, and 24 adjusted for menopausal status. 52 out of 70 rated
250 studies were deemed medium to high quality, including 34 cohort and 18 case-control
251 studies. The 2 studies that specifically investigated BCa molecular subtypes were not
252 rated due to their cross-sectional design.

253 **3.3 Meta-analysis results**

254 2 studies were not included in the meta-analysis because they were cross-sectional and
255 only assessed molecular subtypes at the time of BCa diagnosis. The meta-analysis of
256 70 studies evaluating the association between DM and BCa risk overall demonstrated a
257 20% increased risk of BCa among women with DM (RR=1.20, 95% CI: 1.11-1.29;
258 Figure 2). Heterogeneity among the studies was substantial ($I^2=97.9\%$, P-
259 heterogeneity<0.001). Leave-one-out sensitivity analyses revealed that the findings
260 from Dankner 2016[20] were especially influential; excluding this study produced the
261 most attenuated summary estimate (RR=1.14, 95% CI: 1.09-1.19, $I^2=88.7\%$, P-
262 heterogeneity<0.001; Supplementary Figure S1). The temporal cumulative meta-
263 analysis demonstrated that the summary estimate reached statistical significance in
264 2001 and remained fairly constant and significant after 2005 (Supplementary Figure S2).
265 Meta-analysis of the 9 high-quality (RR=1.12, 95% CI: 1.02-1.22, $I^2=53.0\%$, P-
266 heterogeneity=0.03; Table 2) and, separately, 45 medium-quality (RR=1.15, 95% CI:

267 1.05-1.27, $I^2=98.4%$, P -heterogeneity <0.001) studies yielded slightly attenuated
268 summary estimates. The summary RR for the 16 low-quality studies was 1.42 (95% CI:
269 1.08-1.86, $I^2=96.6%$, P -heterogeneity <0.001).

270 Slight publication bias was detected by the funnel plot (Supplementary Figure
271 S3A) and Begg's test (1-tailed $P<0.001$), but not by Egger's test (1-tailed $P=0.11$).
272 When using trim and fill analysis to measure publication bias, no studies were
273 hypothetically missing, and the summary estimate was therefore unchanged.

274 The results for subgroup analyses are presented in Table 2. The association
275 estimate summarizing the 46 cohort studies remained statistically significant (RR=1.15,
276 95% CI: 1.05-1.27), despite 28 studies having reported null findings. The heterogeneity
277 among cohort studies was still considerable ($I^2=98.6%$, P -heterogeneity <0.001), but no
278 publication bias was found by the funnel plot or Egger's test (1-tailed $P=0.11$). Begg's
279 test did indicate heterogeneity (1-tailed $P <0.001$) (Supplementary Figure S3B). Meta-
280 analysis of the 7 cohort studies of high quality showed more homogeneous results
281 ($I^2=23.1%$, P -heterogeneity=0.25), with only one study demonstrating a significant
282 association. The summary estimate was not statistically significant (RR=1.06, 95% CI:
283 0.99-1.14).

284 The 24 case-control studies showed a significantly increased BCa risk among
285 women with DM (RR=1.26, 95% CI: 1.13-1.40), though 14 studies found no association.
286 Case-control studies demonstrated less heterogeneity than cohort studies ($I^2=73.1%$, P -
287 heterogeneity <0.001). However, the funnel plot demonstrated significant asymmetry,
288 wherein nearly all small studies with less than average estimates were missing
289 (Supplementary Figure S3C). After imputing 9 hypothetically missing association

290 estimates to the bottom left of the funnel plot, the summary estimate decreased
291 remarkably and was no longer statistically significant (RR=1.05, 95% CI: 0.93-1.19).
292 The 2 case-control studies that were deemed high quality reported ORs of 1.40 (95% CI:
293 1.00-1.96) and 1.70 (95% CI: 1.15-2.54), respectively. The pooled estimate from 19
294 medium- to high-quality case-control studies was 1.17 (95% CI: 1.07-1.29, $I^2=59.8%$, P-
295 heterogeneity<0.001).

296 Among regions, the largest association estimate between DM and BCa risk was
297 found in Asia (RR=1.34, 95% CI: 1.11-1.63, $I^2=99.1%$, P-heterogeneity<0.001, n=23),
298 followed by Europe (RR=1.13, 95% CI: 1.06-1.21, $I^2=83.4%$, P-heterogeneity<0.001,
299 n=21), and the Americas (RR=1.10, 95% CI: 1.03-1.17, $I^2=40.8%$, P-heterogeneity=0.02,
300 n=23). The 3 Australian studies showed homogeneous findings, and though the
301 summary association estimate was comparable to that for European studies, the
302 combined results were not statistically significant (RR=1.15, 95% CI: 0.99-1.33,
303 $I^2=32.0%$, P-heterogeneity=0.23). Estimates for studies published before 2012
304 (RR=1.18, 95% CI: 1.09-1.26, $I^2=77.6%$, P-heterogeneity<0.001, n=28) versus in/after
305 2012 (RR=1.20, 95% CI: 1.08-1.33, $I^2=98.7%$, P-heterogeneity<0.001, n=42) were
306 essentially comparable. Methods of DM identification did not materially influence
307 association estimates (self-report RR=1.18, 95% CI: 1.09-1.29, $I^2=62.0%$, P-
308 heterogeneity<0.001, n=30 versus medical records RR=1.14, 95% CI: 1.03-1.26,
309 $I^2=98.9%$, P-heterogeneity<0.001, n=37). Studies that did not adjust for BMI yielded an
310 equivalent summary estimate (RR=1.21, 95% CI: 1.08-1.35, $I^2=98.9%$, P-
311 heterogeneity<0.001, n=31) to studies controlling for BMI (RR=1.19, 95% CI: 1.06-1.32,
312 $I^2=89.7%$, P-heterogeneity<0.001, n=39). 56 studies not accounting for parity yielded a

313 summary estimate of 1.15 (95% CI: 1.06-1.26, $I^2=98.3\%$, P-heterogeneity<0.001), while
314 the summary estimate of the remaining 14 studies was 1.39 (95% CI: 1.18-1.62,
315 $I^2=79.7\%$, P-heterogeneity<0.001). The meta-regressions did not suggest heterogeneity
316 across any subgroups.

317 31 studies, including 11 cohort studies, measured BCa risk in postmenopausal
318 women, for whom the summary RR was 1.12 (95% CI: 1.07-1.17, $I^2=65.5\%$, P-
319 heterogeneity<0.001). 15 studies reported estimates in premenopausal women, and
320 none of them found significant associations. We also did not observe an overall
321 association for premenopausal BCa, and the between-study heterogeneity was
322 negligible (RR=0.95, 95% CI: 0.85-1.05, $I^2=0.00\%$, P-heterogeneity=0.78).

323 13 studies (including the two cross-sectional studies that were not included in the
324 other meta-analyses) evaluated associations with BCa molecular subtypes. All of them
325 presented results for ER+ BCa, and the summary RR was 1.09 (95% CI: 1.00-1.20,
326 $I^2=52.4\%$, P-heterogeneity=0.01; Figure 3A). Analysis based on 11 studies showed an
327 increased risk of ER- BCa associated with DM (RR=1.16, 95% CI: 1.04-1.30, $I^2=0.00\%$,
328 P-heterogeneity=0.57; Figure 3B). The summary estimate for 3 studies that reported
329 data for HER2+ BCa did not reveal a statistically significant association, and the
330 confidence interval was especially wide (RR=1.21, 95% CI: 0.52-2.82, $I^2=67.5\%$, P-
331 heterogeneity=0.05; Figure 3C). The 5 studies that assessed the risk of TN BCa
332 showed a significantly elevated risk related to DM (RR=1.41, 95% CI: 1.01-1.96,
333 $I^2=49.7\%$, P-heterogeneity=0.09; Figure 3D).

334

335 4 DISCUSSION

336 In this review of evidence regarding a possible association between DM and BCa risk,
337 we observed a positive relationship in many studies, even while more than half of
338 studies reported null results. In the overall meta-analysis including 70 cohort and case-
339 control studies, we identified a 20% higher risk of BCa in women with DM. The
340 association was more modest but still statistically significant when restricting to high-
341 quality studies.

342 Our findings of increased BCa risk in women with DM align with conclusions from
343 previous reviews[7,10–14]. Wolf et al. (2005) was the first to summarize the
344 association[11]. Their findings based on 6 cohort and 4 case-control studies suggested
345 that T2D, but not T1D, may be associated with 10-20% excess risk of BCa. The reviews
346 and meta-analyses that have been published since have reported similar summary
347 estimates[7,10,12–14]. The largest review, which included 40 observational studies,
348 was conducted by Hardefeldt et al. in 2012. It demonstrated a 20% increased risk of
349 BCa associated with DM[7]. In contrast to our primary analyses, Hardefeldt et al.
350 included cross-sectional studies and gestational DM. We largely focused on cohort and
351 case-control studies in an effort to consider temporality. We did not evaluate gestational
352 DM because its pathogenesis differs from that of other DM, which could render its
353 impact on breast tumorigenesis distinct. A recent meta-analysis assessed the
354 relationship of gestational DM with BCa risk with null results[21,22].

355 Several biological mechanisms for BCa initiation in diabetic patients have been
356 postulated. DM is characterized by hyperglycemia and hyperinsulinemia. Regarding the
357 former, excessive glucose could favor the selection of malignant cell clones[23] and/or
358 induce DNA damage, downregulate the expression of antioxidants[24], and increase the

359 generation of reactive oxygen species[25,26]. Regarding the latter, increased insulin
360 levels resulting from resistance to endogenous insulin or insulin treatment could directly
361 promote BCa cell proliferation and inhibit cell apoptosis or indirectly mediate growth-
362 promoting actions by increasing hepatic insulin-like growth factor-1 (IGF-1)
363 production^{17–19}. The mechanical pathways of fat-induced inflammatory cytokines and
364 altered levels of sex hormone and sex hormone-binding globulin may also play a
365 role[27,28]. Preclinical data suggest that use of the first-line antidiabetic therapy
366 metformin could be beneficial for BCa prevention because it directly suppresses cell
367 proliferation through the activation of AMPK and regulation of the mTOR signaling
368 pathway or indirectly improves hyperglycemia, hyperinsulinemia, and inflammation[29–
369 31]. However, epidemiologic evidence regarding the relationship between metformin
370 and BCa prevention has been inconsistent[32].

371 Despite the overall positive association between DM and BCa that we identified,
372 heterogeneity across studies was substantial. Population composition, study design,
373 study region, and covariate adjustment all impacted the findings. In particular, our meta-
374 analysis of cohort studies yielded a more modest summary estimate than our meta-
375 analysis of case-control studies. Publication bias, however, may not have been
376 negligible among case-control studies, and imputation of potentially missing estimates
377 from individual studies yielded a summary estimate that was attenuated and non-
378 significant.

379 We observed a 34% increased risk of BCa in women with DM in studies
380 conducted in Asia, whereas studies conducted in Western populations demonstrated
381 smaller associations. We note that heterogeneity was highest in the meta-analysis of

382 studies conducted in Asia. To explore heterogeneity among such studies, we ran a
383 *posteriori* meta-regression analyses that demonstrated a significant difference between
384 studies that did versus did not adjust for BMI. 13 studies that did not adjust for BMI
385 indicated a significant 53% increased risk of BCa among women with DM, while 10
386 studies that did adjust for BMI did not yield a significant summary association.

387 Though adjustment for BMI was consequential for studies in Asia, BMI-adjusted
388 studies overall had a comparable summary estimate to studies that did not adjust for
389 BMI. These results suggest that DM may be a risk factor for BCa independent of obesity.
390 Nonetheless, obesity and DM might trigger similar pathogenic mechanisms of BCa
391 development, including metabolic changes, inflammation, insulin resistance and
392 increased IGF-1, and altered antitumor immunity[33]. Parity, and particularly multiple
393 pregnancies, has been linked with an increased risk of T2DM but is associated with a
394 lower risk of BCa[34,35]. Ignoring parity when evaluating the relationship between T2M
395 and BCa could result in underestimations of the true association. Indeed, we found that
396 studies that adjusted for parity yielded slightly stronger association estimates.

397 BCa is a heterogeneous disease with varied molecular features, but the
398 association between DM and BCa molecular subtypes is uncertain. Biological evidence
399 suggests that hyperinsulinemia could induce expression and increase the binding ability
400 of ER[36]. By contrast, metformin may repress the expression of ER and ER target
401 genes[37]. DM-induced changes in levels of bioavailable sex hormones, such as
402 increasing levels of estrogen and androgen and decreasing levels of progesterone[36],
403 could also impact receptor expression. One meta-analysis found non-significant
404 associations between DM and ER, PR, and HER2 status, respectively, by comparing

405 hormone receptor negativity to their positive counterparts[38]. In our review, we found
406 that DM was most strongly associated with TN BCa, which is among the most
407 aggressive types of disease.

408 We were not able to combine findings regarding associations between DM
409 duration and BCa risk since studies had different DM duration categories. However,
410 multiple, though not all, studies that assessed the temporal trend of the association
411 between DM and BCa indicated that the relationship was strongest during the time
412 period closely following DM diagnosis[39–45]. It is possible that women with newly
413 diagnosed DM have more frequent contact with health care providers and are thus more
414 likely to uncover BCa. Neglecting this detection bias may lead to overestimation of BCa
415 risk at the time of DM diagnosis[46]. However, screening bias is unlikely to account for
416 the excess risk of BCa observed up to 10 years following DM diagnosis[42,45,47,48],
417 suggesting that DM may play a real etiologic role in BCa development.

418 Our review expands upon findings from previous reviews in several important
419 ways. First, we assessed the risk of bias for each study. As such, we were able to
420 combine findings from only high-quality studies, which were least likely to be affected by
421 selection bias, confounding, and reverse causation. Second, we identified and adjusted
422 for potential missingness of case-control studies with small sample sizes and non-
423 significant results. Third, our study summarized existing evidence addressing possible
424 associations between DM and molecular subtypes of BCa. Nevertheless, there are
425 some limitations of this review worth noting. Many of the contributing studies were
426 susceptible to selection bias, most often related to restriction to older ages, so as to
427 maximize the number of DM and/or BCa cases. In addition, most studies were unable to

428 differentiate between T1D and T2D. Because T1D and T2D may differ in etiology,
429 patient demographics, and treatment regimens, the pathogenesis of BCa could be
430 different in these two patient groups. It is reasonable to assume that the results of this
431 review largely concern T2D given that more than 95% of DM cases are estimated to be
432 T2D[49], and in many studies, the median/mean age at DM diagnosis was above 40
433 years. Finally, most included studies did not report information on DM therapy, which
434 could mediate any relationship between DM and BCa risk.

435 In conclusion, this updated systematic review and meta-analysis confirms prior
436 findings of an increased risk of BCa in women with DM. In addition, our results suggest
437 that women with DM may have a higher risk of diagnosis with an aggressive molecular
438 subtype of BCa compared to women without DM. Further high-quality evidence is
439 needed to verify the relationship between DM and BCa receptor expression, understand
440 the underlying mechanisms of breast carcinogenesis in women with DM, and eventually
441 provide evidence-based recommendations for BCa prevention and treatment.

442 **REFERENCES**

- 443 1. Breast cancer [Internet]. [cited 2022 May 23]. Available from:
444 <https://www.who.int/news-room/fact-sheets/detail/breast-cancer>
- 445 2. Sung H, Ferlay J, Siegel RL, Laversanne M, Soerjomataram I, Jemal A, et al. Global
446 Cancer Statistics 2020: GLOBOCAN Estimates of Incidence and Mortality Worldwide for
447 36 Cancers in 185 Countries. *CA Cancer J Clin.* 2021;71:209–49.
- 448 3. García-Estévez L, Cortés J, Pérez S, Calvo I, Gallegos I, Moreno-Bueno G. Obesity
449 and Breast Cancer: A Paradoxical and Controversial Relationship Influenced by
450 Menopausal Status. *Front Oncol* [Internet]. 2021 [cited 2022 May 23];11. Available from:
451 <https://www.frontiersin.org/article/10.3389/fonc.2021.705911>
- 452 4. Cuadros DF, Li J, Musuka G, Awad SF. Spatial epidemiology of diabetes: Methods
453 and insights. *World J Diabetes.* Pleasanton: Baishideng Publishing Group Inc;
454 2021;12:1042–56.
- 455 5. Diabetes [Internet]. [cited 2022 Feb 17]. Available from: [https://www.who.int/news-](https://www.who.int/news-room/fact-sheets/detail/diabetes)
456 [room/fact-sheets/detail/diabetes](https://www.who.int/news-room/fact-sheets/detail/diabetes)
- 457 6. Giovannucci E, Harlan DM, Archer MC, Bergenstal RM, Gapstur SM, Habel LA, et al.
458 Diabetes and Cancer: A Consensus Report. *CA Cancer J Clin.* 2010;60:207–21.
- 459 7. Hardefeldt PJ, Edirimanne S, Eslick GD. Diabetes increases the risk of breast cancer:
460 a meta-analysis. *Endocr Relat Cancer.* 2012;19:793–803.
- 461 8. Dai X, Xiang L, Li T, Bai Z. Cancer Hallmarks, Biomarkers and Breast Cancer
462 Molecular Subtypes. *J Cancer.* 2016;7:1281–94.
- 463 9. Page MJ, McKenzie JE, Bossuyt PM, Boutron I, Hoffmann TC, Mulrow CD, et al. The
464 PRISMA 2020 statement: an updated guideline for reporting systematic reviews. *BMJ.*
465 2021;n71.
- 466 10. Boyle P, Boniol M, Koechlin A, Robertson C, Valentini F, Coppens K, et al. Diabetes
467 and breast cancer risk: a meta-analysis. *Br J Cancer.* 2012;107:1608–17.
- 468 11. Wolf I, Sadetzki S, Catane R, Karasik A, Kaufman B. Diabetes mellitus and breast
469 cancer. :9.
- 470 12. Larsson SC, Mantzoros CS, Wolk A. Diabetes mellitus and risk of breast cancer: A
471 meta-analysis. *Int J Cancer.* 2007;121:856–62.
- 472 13. Liao S, Li J, Wei W, Wang L, Zhang Y, Li J, et al. Association between diabetes
473 mellitus and breast cancer risk: a meta-analysis of the literature. *Asian Pac J Cancer*
474 *Prev APJCP.* 2011;12:1061–5.

- 475 14. De Bruijn KMJ, Arends LR, Hansen BE, Leeflang S, Ruiter R, van Eijck CHJ.
476 Systematic review and meta-analysis of the association between diabetes mellitus and
477 incidence and mortality in breast and colorectal cancer. *Br J Surg*. 2013;100:1421–9.
- 478 15. Stang A. Critical evaluation of the Newcastle-Ottawa scale for the assessment of the
479 quality of nonrandomized studies in meta-analyses. *Eur J Epidemiol*. 2010;25:603–5.
- 480 16. Symons MJ, Moore DT. Hazard rate ratio and prospective epidemiological studies. *J*
481 *Clin Epidemiol*. 2002;55:893–9.
- 482 17. Duval S, Tweedie R. Trim and Fill: A Simple Funnel-Plot-Based Method of Testing
483 and Adjusting for Publication Bias in Meta-Analysis. *Biometrics*. 2000;56:455–63.
- 484 18. Menopause - Symptoms and causes - Mayo Clinic [Internet]. [cited 2022 May 3].
485 Available from: [https://www.mayoclinic.org/diseases-conditions/menopause/symptoms-](https://www.mayoclinic.org/diseases-conditions/menopause/symptoms-causes/syc-20353397)
486 [causes/syc-20353397](https://www.mayoclinic.org/diseases-conditions/menopause/symptoms-causes/syc-20353397)
- 487 19. Barańska A, Dolar-Szczasny J, Kanadys W, Kinik W, Ceglarska D, Religioni U, et al.
488 Oral Contraceptive Use and Breast Cancer Risk According to Molecular Subtypes
489 Status: A Systematic Review and Meta-Analysis of Case-Control Studies. *Cancers*.
490 2022;14:574.
- 491 20. Dankner et al. - 2016 - Time-Dependent Risk of Cancer After a Diabetes Dia.pdf.
- 492 21. Sona MF, Myung S-K, Park K, Jargalsaikhan G. Type 1 diabetes mellitus and risk of
493 cancer: a meta-analysis of observational studies. *Jpn J Clin Oncol*. 2018;48:426–33.
- 494 22. Wang Y, Yan P, Fu T, Yuan J, Yang G, Liu Y, et al. The association between
495 gestational diabetes mellitus and cancer in women: A systematic review and meta-
496 analysis of observational studies. *Diabetes Metab*. 2020;46:461–71.
- 497 23. Warburg O. On the Origin of Cancer Cells. *Science*. American Association for the
498 Advancement of Science; 1956;123:309–14.
- 499 24. Chronic oxidative stress as a mechanism for glucose toxicity of the beta cell in Type
500 2 diabetes | SpringerLink [Internet]. [cited 2021 Jul 23]. Available from:
501 <https://link.springer.com/article/10.1007%2Fs12013-007-0026-5>
- 502 25. Collaboration TERF. Diabetes Mellitus, Fasting Glucose, and Risk of Cause-Specific
503 Death [Internet]. <http://dx.doi.org/10.1056/NEJMoa1008862>. Massachusetts Medical
504 Society; 2011 [cited 2021 Jul 22]. Available from:
505 <https://www.nejm.org/doi/10.1056/NEJMoa1008862>
- 506 26. Jee SH. Fasting Serum Glucose Level and Cancer Risk in Korean Men and
507 Women. *JAMA*. 2005;293:194.
- 508 27. Crave JC, Lejeune H, Brébant C, Baret C, Pugeat M. Differential effects of insulin
509 and insulin-like growth factor I on the production of plasma steroid-binding globulins by

- 510 human hepatoblastoma-derived (Hep G2) cells. *J Clin Endocrinol Metab.*
511 1995;80:1283–9.
- 512 28. Ferroni P, Riondino S, Buonomo O, Palmirotta R, Guadagni F, Roselli M. Type 2
513 Diabetes and Breast Cancer: The Interplay between Impaired Glucose Metabolism and
514 Oxidant Stress. *Oxid Med Cell Longev.* 2015;2015:183928.
- 515 29. Hatoum D, McGowan EM. Recent advances in the use of metformin: can treating
516 diabetes prevent breast cancer? *BioMed Res Int.* 2015;2015:548436.
- 517 30. Faria J, Negalha G, Azevedo A, Martel F. Metformin and Breast Cancer: Molecular
518 Targets. *J Mammary Gland Biol Neoplasia.* 2019;24:111–23.
- 519 31. Rena G, Hardie DG, Pearson ER. The mechanisms of action of metformin.
520 *Diabetologia.* 2017;60:1577–85.
- 521 32. Tang GH, Satkunam M, Pond GR, Steinberg GR, Blandino G, Schunemann HJ, et
522 al. Association of Metformin with Breast Cancer Incidence and Mortality in Patients with
523 Type II Diabetes: A GRADE-Assessed Systematic Review and Meta-analysis. *Cancer*
524 *Epidemiol Biomarkers Prev.* Philadelphia: Amer Assoc Cancer Research; 2018;27:627–
525 35.
- 526 33. Picon-Ruiz M, Morata-Tarifa C, Valle-Goffin JJ, Friedman ER, Slingerland JM.
527 Obesity and adverse breast cancer risk and outcome: Mechanistic insights and
528 strategies for intervention: Breast Cancer, Inflammation, and Obesity. *CA Cancer J Clin.*
529 2017;67:378–97.
- 530 34. Li P, Shan Z, Zhou L, Xie M, Bao W, Zhang Y, et al. MECHANISMS IN
531 ENDOCRINOLOGY: Parity and risk of type 2 diabetes: a systematic review and dose-
532 response meta-analysis. *Eur J Endocrinol.* Bioscientifica Ltd; 2016;175:R231–45.
- 533 35. Huo D, Adebamowo CA, Ogundiran TO, Akang EE, Campbell O, Adenipekun A, et
534 al. Parity and breastfeeding are protective against breast cancer in Nigerian women. *Br*
535 *J Cancer.* Nature Publishing Group; 2008;98:992–6.
- 536 36. Joung KH, Jeong J-W, Ku BJ. The Association between Type 2 Diabetes Mellitus
537 and Women Cancer: The Epidemiological Evidences and Putative Mechanisms.
538 *BioMed Res Int.* 2015;2015:920618.
- 539 37. KIM J, LEE J, JANG SY, KIM C, CHOI Y, KIM A. Anticancer effect of metformin on
540 estrogen receptor-positive and tamoxifen-resistant breast cancer cell lines. *Oncol Rep.*
541 2016;35:2553–60.
- 542 38. Zhang F, de Haan-Du J, Sidorenkov G, Landman GWD, Jalving M, Zhang Q, et al.
543 Type 2 Diabetes Mellitus and Clinicopathological Tumor Characteristics in Women
544 Diagnosed with Breast Cancer: A Systematic Review and Meta-Analysis. *Cancers.*
545 2021;13:4992.

- 546 39. Dankner R, Boffetta P, Balicer RD, Boker LK, Sadeh M, Berlin A, et al. Time-
547 Dependent Risk of Cancer After a Diabetes Diagnosis in a Cohort of 2.3 Million Adults.
548 *Am J Epidemiol.* 2016;183:1098–106.
- 549 40. Harding JL, Shaw JE, Peeters A, Cartensen B, Magliano DJ. Cancer Risk Among
550 People With Type 1 and Type 2 Diabetes: Disentangling True Associations, Detection
551 Bias, and Reverse Causation. *Diabetes Care.* 2015;38:264–70.
- 552 41. Hemminki K, Li X, Sundquist J, Sundquist K. Risk of Cancer Following
553 Hospitalization for Type 2 Diabetes. *The Oncologist.* 2010;15:548–55.
- 554 42. Michels KB, Solomon CG, Hu FB, Rosner BA, Hankinson SE, Colditz GA, et al.
555 Type 2 Diabetes and Subsequent Incidence of Breast Cancer in the Nurses' Health
556 Study. *Diabetes Care.* 2003;26:1752–8.
- 557 43. Wang M, Hu R-Y, Wu H-B, Pan J, Gong W-W, Guo L-H, et al. Cancer risk among
558 patients with type 2 diabetes mellitus: a population-based prospective study in China.
559 *Sci Rep.* 2015;5:11503.
- 560 44. Attner B, Landin-Olsson M, Lithman T, Noreen D, Olsson H. Cancer among patients
561 with diabetes, obesity and abnormal blood lipids: a population-based register study in
562 Sweden. *Cancer Causes Control.* 2012;23:769–77.
- 563 45. Bosetti C, Rosato V, Polesel J, Levi F, Talamini R, Montella M, et al. Diabetes
564 Mellitus and Cancer Risk in a Network of Case-Control Studies. *Nutr Cancer.*
565 2012;64:643–51.
- 566 46. Tseng C-H. Diabetes and breast cancer in Taiwanese women: a detection bias? *Eur*
567 *J Clin Invest.* 2014;44:910–7.
- 568 47. Weiderpass E, Gridley G, Persson I, Nyrén O, Ekblom A, Adami H-O. Risk of
569 endometrial and breast cancer in patients with diabetes mellitus. *Int J Cancer.*
570 1997;71:360–3.
- 571 48. Wu AH, Yu MC, Tseng C-C, Stanczyk FZ, Pike MC. Diabetes and risk of breast
572 cancer in Asian-American women. *Carcinogenesis.* 2007;28:1561–6.
- 573 49. Diabetes [Internet]. [cited 2022 Jul 11]. Available from: [https://www.who.int/news-](https://www.who.int/news-room/fact-sheets/detail/diabetes)
574 [room/fact-sheets/detail/diabetes](https://www.who.int/news-room/fact-sheets/detail/diabetes)
- 575

576 **FIGURE LEGENDS**

577 FIGURE 1. Flow diagram of study selection.

578 FIGURE 2. Forest plot of the association between diabetes and breast cancer risk.

579 FIGURE 3. Forest plots for the associations of diabetes with (A) estrogen receptor-

580 positive breast cancer, (B) estrogen receptor-negative breast cancer, (C) triple-negative

581 breast cancer, and (D) human epidermal growth factor 2-positive breast cancer.

582

583 **SUPPORTING INFORMATION**

584 SUPPLEMENTARY FIGURE S1. Leave-one-out sensitivity meta-analyses of 70 studies

585 assessing the association between diabetes and breast cancer risk.

586 SUPPLEMENTARY FIGURE S2. Cumulative temporal meta-analysis of 70 studies

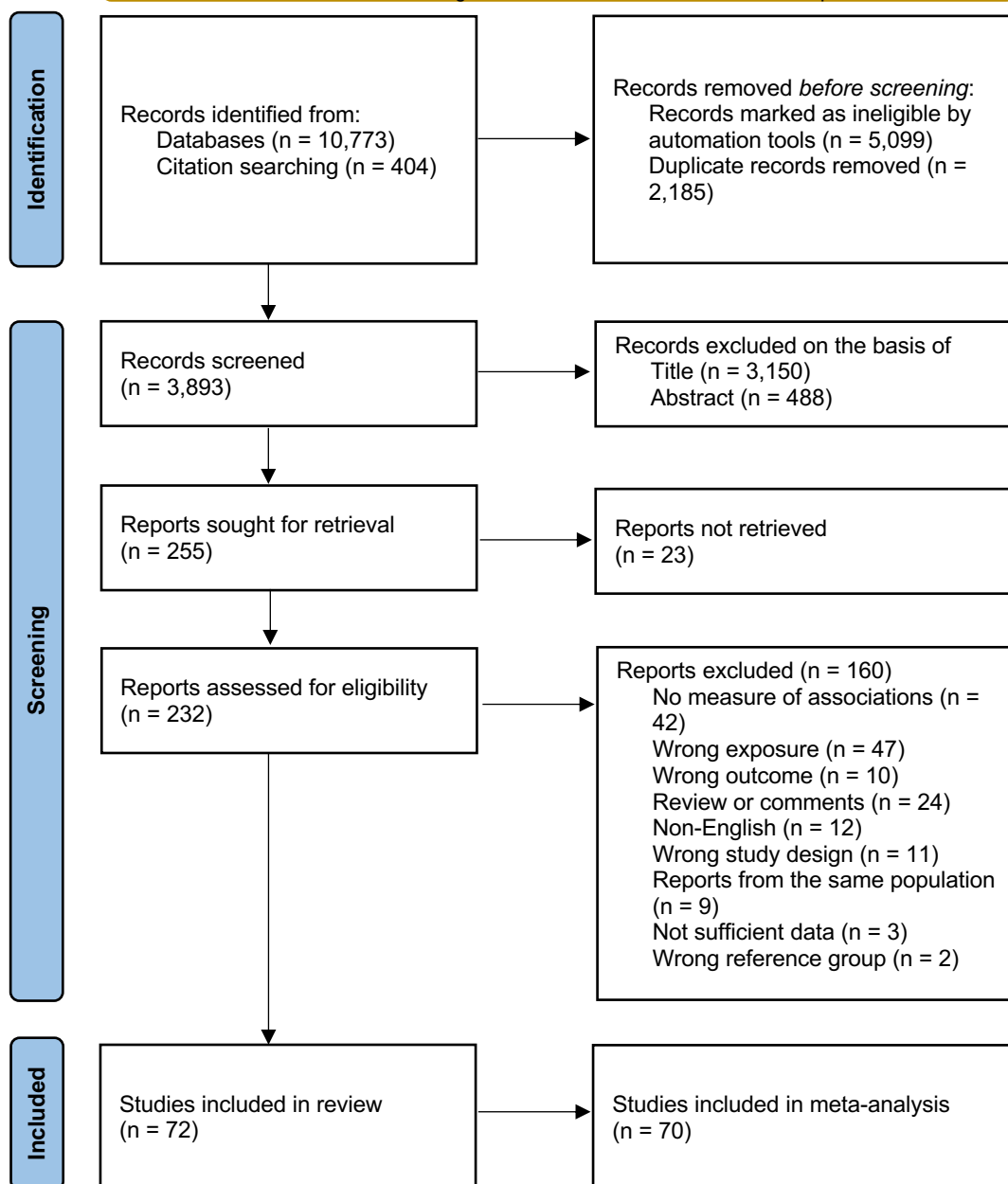
587 assessing the association between diabetes and breast cancer risk.

588 SUPPLEMENTARY FIGURE S3. Funnel plots of observed and imputed studies using

589 trim-and-fill method for assessing publication bias among (A) all 70 studies, (B) 46

590 cohort studies, and (C) 24 case-control studies.

Identification of studies via databases, registers and other sources



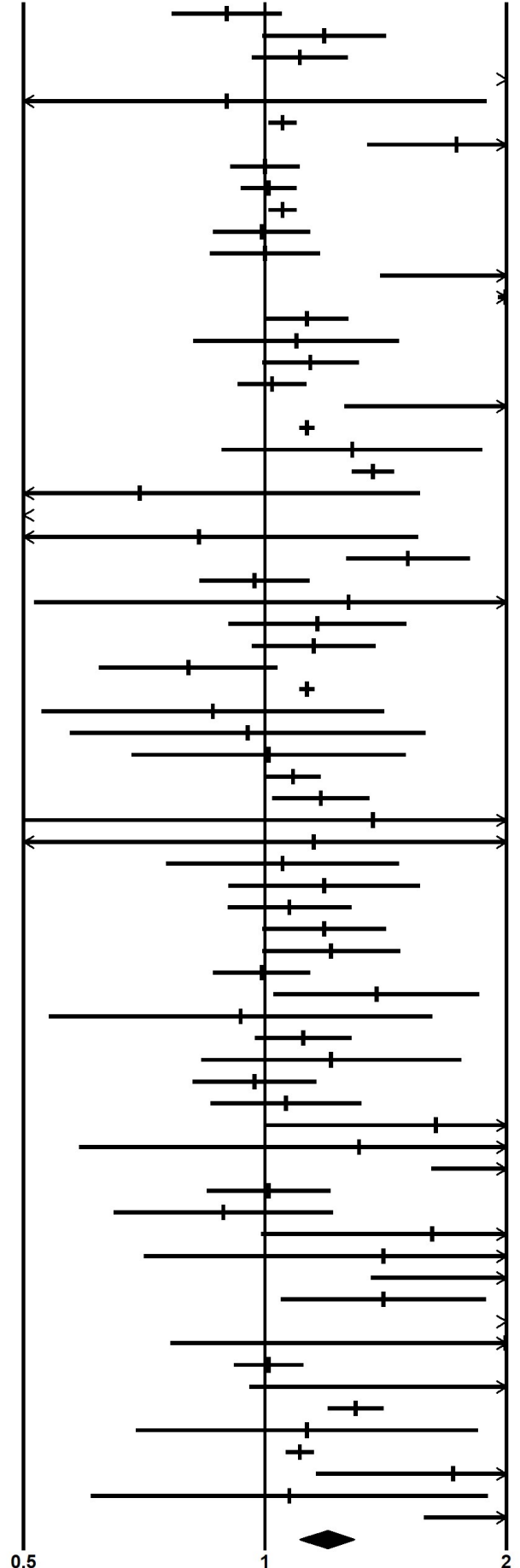
Study name

Statistics for each study

Risk ratio and 95% CI

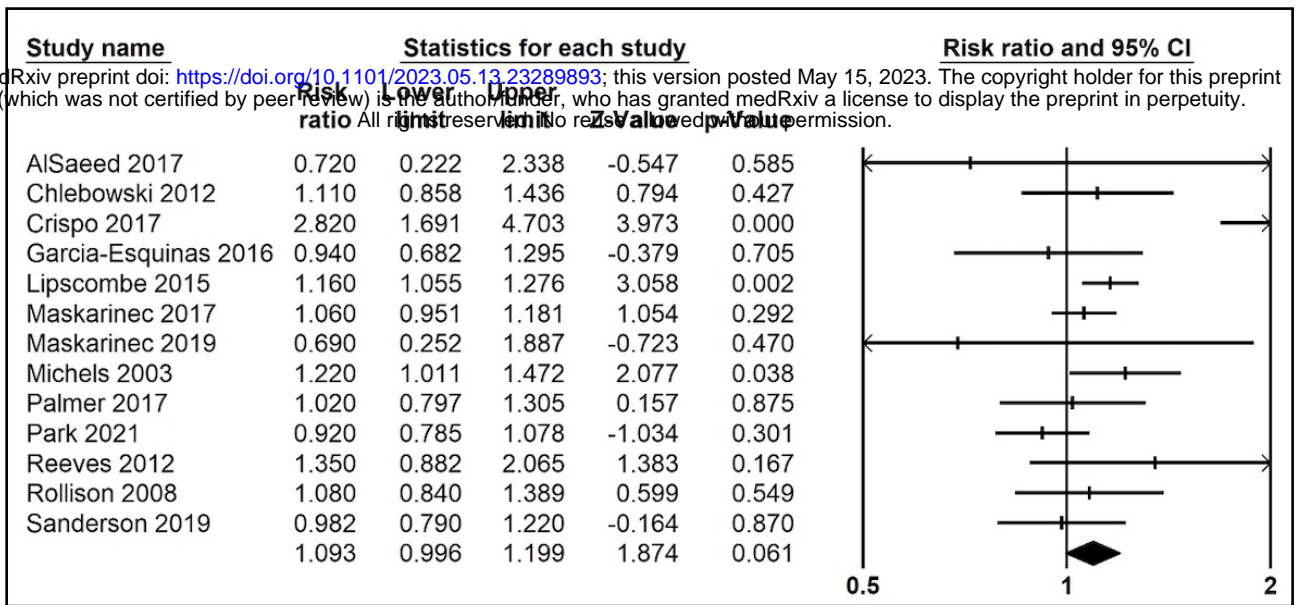
medRxiv preprint doi: <https://doi.org/10.1101/2023.05.13.23289893>; this version posted May 15, 2023. The copyright holder for this preprint (which was not certified by peer review) is the author/funder, who has granted medRxiv a license to display the preprint in perpetuity. All rights reserved. No reuse allowed without permission.

Study name	Risk ratio	Lower limit	Upper limit	p-value	95% CI
Adami 1991	0.896	0.766	1.048	-1.375	0.169
Attner 2012	1.185	0.994	1.414	1.889	0.059
Baron 2001	1.105	0.963	1.268	1.429	0.153
Beji 2007	3.456	2.076	5.752	4.769	0.000
Bergkvist 1988	0.896	0.425	1.887	-0.289	0.772
Bjornsdottir 2020	1.051	1.011	1.093	2.500	0.012
Bosetti 2012	1.733	1.343	2.236	4.231	0.000
Bowker 2011	1.000	0.907	1.103	0.000	1.000
Bronsveld 2017	1.010	0.934	1.092	0.250	0.803
Carstensen 2012	1.051	1.011	1.093	2.500	0.012
Chlebowski 2012	0.990	0.863	1.136	-0.143	0.886
Chodick 2010	1.000	0.855	1.170	0.000	1.000
Crispo 2017	2.460	1.393	4.342	3.103	0.002
Dankner 2016	1.994	1.955	2.033	69.000	0.000
Fang 2018	1.127	1.002	1.268	2.000	0.046
Garcia-Esquinas 2016	1.094	0.815	1.468	0.600	0.549
Gini 2016	1.139	0.993	1.306	1.857	0.063
Gong 2016	1.020	0.925	1.125	0.400	0.689
Goodman 1997	2.054	1.259	3.353	2.880	0.004
Harding 2015	1.127	1.106	1.150	12.000	0.000
He 2018	1.284	0.885	1.863	1.316	0.188
Hemminki 2010	1.363	1.286	1.446	10.333	0.000
Hjalgrim 1997	0.698	0.312	1.558	-0.878	0.380
Hsieh 2014	0.411	0.365	0.462	-14.833	0.000
Inoue 2006	0.827	0.442	1.548	-0.594	0.553
Jee 2005	1.507	1.263	1.797	4.556	0.000
Jung 2013	0.970	0.830	1.135	-0.375	0.708
Khan 2006	1.271	0.516	3.132	0.522	0.602
Kuriki 2007	1.162	0.901	1.499	1.154	0.249
Lambe 2011	1.150	0.964	1.372	1.556	0.120
Lavecchia 1994	0.803	0.622	1.035	-1.692	0.091
Liaw 2015	1.127	1.106	1.150	12.000	0.000
Magliano 2012	0.861	0.527	1.405	-0.600	0.549
Maskarinec 2017	0.951	0.571	1.583	-0.192	0.848
Maskarinec Ice 2019	1.010	0.682	1.495	0.050	0.960
Maskarinec Ja 2019	1.083	1.002	1.172	2.000	0.046
Michels 2003	1.174	1.023	1.346	2.286	0.022
Mourouti 2013	1.363	0.502	3.705	0.608	0.543
Nakamura 2013	1.150	0.467	2.834	0.304	0.761
Ogunleye 2009	1.051	0.753	1.467	0.294	0.769
Omara 1985	1.185	0.901	1.560	1.214	0.225
Onitilo 2014	1.073	0.899	1.279	0.778	0.437
Palmer 2017	1.185	0.994	1.414	1.889	0.059
Pan 2018	1.209	0.994	1.471	1.900	0.057
Park 2021	0.990	0.863	1.136	-0.143	0.886
Rapp 2006	1.377	1.026	1.848	2.133	0.033
Rastad 2019	0.932	0.539	1.614	-0.250	0.803
Redaniel 2012	1.116	0.973	1.280	1.571	0.116
Reeves 2012	1.209	0.833	1.755	1.000	0.317
Rennert 2020	0.970	0.814	1.158	-0.333	0.739
Rollison 2008	1.062	0.856	1.317	0.545	0.585
Ronco post 2012	1.632	1.000	2.664	1.960	0.050
Ronco pre 2012	1.310	0.586	2.926	0.659	0.510
Salinas-Martinez 2014	2.586	1.615	4.139	3.958	0.000
Sanderson 2010	1.010	0.847	1.205	0.111	0.912
Sanderson 2019	0.887	0.648	1.214	-0.750	0.453
Sellers 2007	1.616	0.990	2.638	1.920	0.055
Steenland 1995	1.405	0.708	2.790	0.971	0.331
Tabassum 2016	2.974	1.358	6.514	2.725	0.006
Talamini 1997	1.405	1.047	1.885	2.267	0.023
Vatseba 2019	3.287	2.598	4.159	9.917	0.000
Wang 2013	1.994	0.763	5.209	1.408	0.159
Wang cc 2015	1.010	0.916	1.114	0.200	0.841
Wang cs 2015	3.490	0.957	12.725	1.894	0.058
Weiderpass 1997	1.297	1.199	1.403	6.500	0.000
Weiss 1999	1.127	0.691	1.840	0.480	0.631
Wideroff 1997	1.105	1.063	1.149	5.000	0.000
Wu 2007	1.716	1.160	2.540	2.700	0.007
Yeh 2012	1.073	0.608	1.893	0.241	0.809
Zhang 2012	2.203	1.579	3.075	4.647	0.000
	1.195	1.106	1.292	4.489	0.000

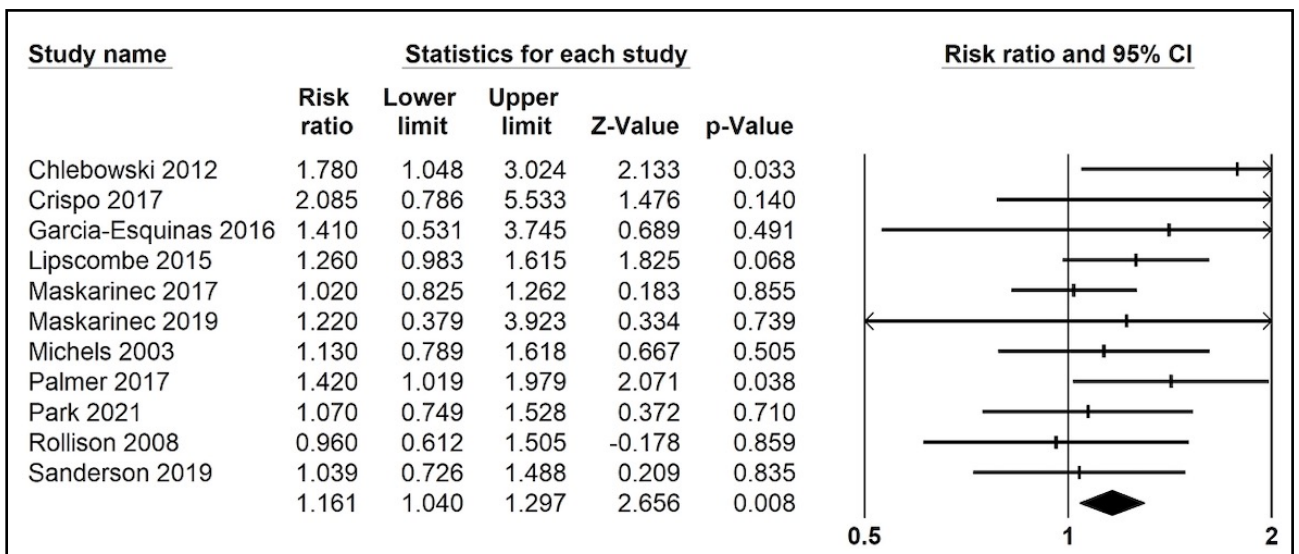


(A)

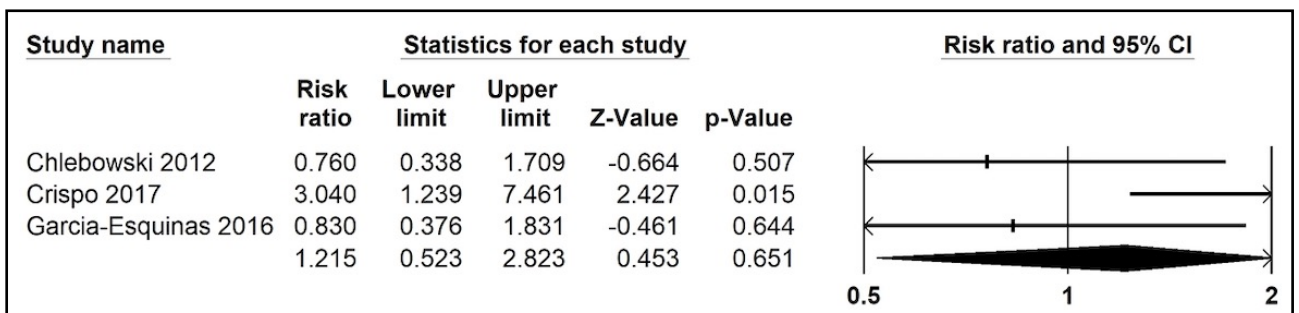
medRxiv preprint doi: <https://doi.org/10.1101/2023.05.13.23289893>; this version posted May 15, 2023. The copyright holder for this preprint (which was not certified by peer review) is the author/funder, who has granted medRxiv a license to display the preprint in perpetuity. All rights reserved. No reuse allowed without permission.



(B)



(C)



(D)

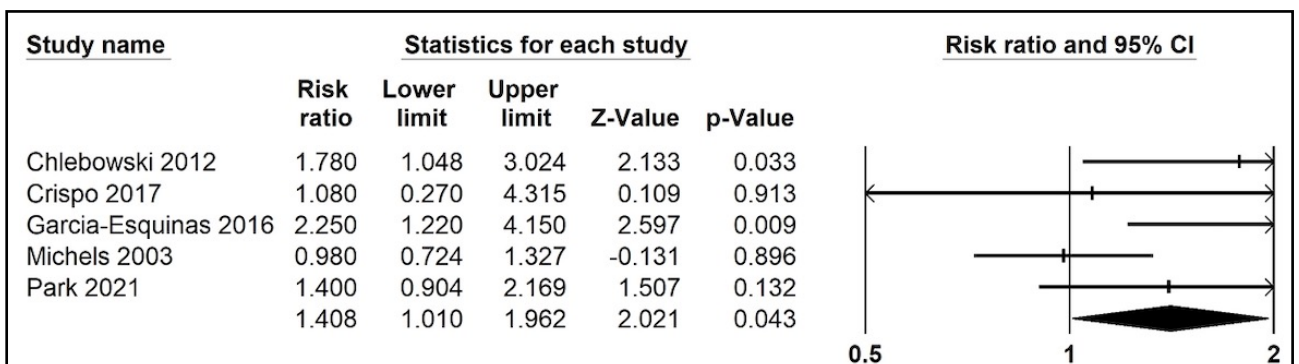


TABLE 1. Characteristics of studies included in the systematic review

Study ID	Study design	Country of study	N participants	Age (years)	Time frame or follow-up	DM identification	BCa identification	Adjusted for BMI	Quality
Omara 1985 ¹	Case-control	US	9,165	30-89	1957-1965	Medical records	Medical records	No	Medium
Bergkvist 1988 ²	Case-control	Sweden	1,975	≥35	1977-1980	Self-report	Medical records	No	Low
Adami 1991 ³	Cohort	Sweden	27,862	≥20	Mean 5.2 years [†]	Medical records	Medical records	No	Low
Lavecchia 1994 ⁴	Case-control	Italy	8,116	<75	1983-1985	Self-report	Medical records	No	Medium
Steenland 1995 ⁵	Cohort	US	7,204	25-74	Mean 7.7 years	Self-report	Medical records	Yes	Low
Goodman 1997 ⁶	Cohort	Japan	22,200	NA	Mean 8.3 years	Self-report	Medical records	No	Low
Hjalgrim 1997 ⁷	Cohort	Denmark	402	NA	Mean 10.1 years [†]	Medical records	Medical records	No	Medium
Talamini 1997 ⁸	Case-control	Italy	5,157	Median 55	1991-1994	Self-report	Medical records	Yes	High
Wideroff 1997 ⁹	Cohort	Denmark	55,010	Median 69	1977-1993	Medical records	Medical records	No	Medium
Weiderpass 1997 ¹⁰	Cohort	Sweden	80,005	Mean 64.2	Mean 6.7 years	Medical records	Medical records	No	Low
Weiss 1999 ¹¹	Case-control	US	4,163	20-54	1990-1992	Self-report	Medical records	Yes	Medium
Baron 2001 ¹²	Case-control	US	17,515	50-75	1990-1994	Self-report	Medical records	Yes	Medium
Michels 2003 ¹³	Cohort	US	116,488	30 –55	Mean 20.3	Medical	Self-report	Yes	Medium

Study ID	Study design	Country of study	N participants	Age (years)	Time frame or follow-up	DM identification	BCa identification	Adjusted for BMI	Quality
Jee 2005 ¹⁴	Cohort	South Korea	468,615	Mean 49.6	Up to 10 years	Self-report or Medical records	Medical records	No	Medium
Khan 2006 ¹⁵	Cohort	Japan	33,503	40-79	Mean 8.0 years [†]	Self-report	Medical records	Yes	Medium
Inoue 2006 ¹⁶	Cohort	Japan	51,223	Mean 51.8	1990-2003	Self-report	Medical records	Yes	Medium
Rapp 2006 ¹⁷	Cohort	Austria	77,228	Mean 43	Mean 8.6 years	Medical records	Medical records	Yes	High
Wu 2007 ¹⁸	Case-control	US	2,396	25-74	1995-2001	Self-report	Medical records	Yes	High
Sellers 2007 ¹⁹	Cohort	US	6,130	>18	Mean 40.2 years [†]	Self-report	Self-report	Yes	Low
Beji 2007 ²⁰	Case-control	Turkish	1,455	Median 56	2002-2003	Self-report	Medical records	Yes	Low
Kuriki 2007 ²¹	Case-control	Japan	39,900	40–80	Starting 1988	Self-report	Medical records	Yes	Medium
Rollison 2008 ²²	Case-control	US	4,847	Mean 55.7	1999-2004	Self-report	Medical records	Yes	Medium
Ogunleye 2009 ²³	Cohort	UK	13,416	Mean 62	1993-2004	Medical records	Medical records	No	Medium
Sanderson 2010 ²⁴	Case-control	Mexico	1,169	30-79	2003-2008	Medical records	Medical records	No	Medium
Chodick 2010 ²⁵	Cohort	Israel	47,682	Mean 62	Mean 8 years	Medical records	Medical records	Yes	Medium

Study ID	Study design	Country of study	N participants	Age (years)	Time frame or follow-up	DM identification	BCa identification	Adjusted for BMI	Quality
Hemminki 2010 ²⁶	Cohort	Sweden	62,563	>39	Median 15 years	Medical records	Medical records	No	Medium
Bowker 2011 ²⁷	Cohort	Canada	169,012	Mean 61.8	Mean 4.4 years	Medical records	Medical records	No	Medium
Lambe 2011 ²⁸	Cohort	Sweden	230,737	Mean 46.6	Mean 11.7 years	Medical records	Medical records	No	Medium
Ronco 2012 ²⁹	Case-control	Uruguay	750	>18	2004-2010	Self-report	Medical records	No	Medium
Ronco 2012 ³⁰	Case-control	Uruguay	912	23-69	2004-2009	Self-report	Medical records	Yes	Medium
Reeves 2012 ³¹	Cohort	US	8,956	>65	1986-2009	Self-report	Medical records	Yes	Medium
Yeh 2012 ³²	Cohort	US	10,467	≥30	1989-2006	Self-report	Medical records	Yes	Medium
Chlebowski 2012 ³³	Cohort	US	68,019	63.9	Mean 11.8 years	Self-report	Medical records	Yes	High
Zhang 2012 ³⁴	Cohort	China	4,155	Mean 61.1	Mean 9.1 years [†]	Medical records	Medical records	No	Low
Magliano 2012 ³⁵	Cohort	Australia	3,315	≥45	Mean 11.0 years	Medical records	Medical records	No	Low
Bosetti 2012 ³⁶	Case-control	Italy and Switzerland	6,426	Median 50	1991-2009	Self-report	Medical records	Yes	Medium
Attner 2012 ³⁷	Case-control	Sweden	23,566	45-84	Up to 10 years	Medical records	Medical records	No	Medium
Redaniel	Cohort	UK	82,867	>35	1987-2007	Medical	Medical	Yes	High

Study ID	Study design	Country of study	N participants	Age (years)	Time frame or follow-up	DM identification	BCa identification	Adjusted for BMI	Quality
2012 ³⁸						records	records		
Carstensen 2012 ³⁹	Cohort	Danish	260,804	65-75	1995-2009	Medical records	Medical records	No	Medium
Wang 2013 ⁴⁰	Case-control	China	492	Mean 49.9	In 2008	Self-report	Self-report	Yes	Medium
Jung 2013 ⁴¹	Case-control	South Korea	5,060	Mean 48	2001-2007	Self-report	Medical records	No	Low
Nakamura 2013 ⁴²	Cohort	Japan	16,547	>35	Mean 14.0 years [†]	Self-report	Medical records	Yes	Medium
Mourouti 2013 ⁴³	Case-control	Greece	500	Mean 56	2010-2012	Medical records	Medical records	Yes	Medium
Salinas-Martínez 2014 ⁴⁴	Case-control	Mexico	646	NA [§]	2011-2013	Self-report or Medical records	Medical records	No	Low
Onitilo 2014 ⁴⁵	Cohort	US	31,769	>30	1995-2009	Medical records	Medical records	Yes	Medium
Hsieh 2014 ⁴⁶	Cohort	China	18,563	>20	2000-2010	Medical records	Medical records	Yes	Low
Lipscombe 2015 ⁴⁷	cross-sectional [‡]	Canada	38,407	20–105	2007-2012	Medical records	Medical records	No	
Wang 2015 ⁴⁸	Case-control	China	129	Mean 53	2011-2013	Medical records	Self-report	No	Medium
Wang 2015 ⁴⁹	Cohort	China	163,449	59.4	2007-2013	Medical records	Medical records	No	Medium
Liaw 2015 ⁵⁰	Cohort	China	10,827,079	Mean 60.2	2004-2010	Medical records	Medical records	No	Medium

Study ID	Study design	Country of study	N participants	Age (years)	Time frame or follow-up	DM identification	BCa identification	Adjusted for BMI	Quality
Harding 2015 ⁵¹	Cohort	Australia	408,426	Median 60.4	Median 5.8 years	Medical records	Medical records	Yes	Medium
Gong 2016 ⁵²	Cohort	US	145,826	50-79	1993-2015	Self-report	Medical records	Yes	High
Tabassum 2016 ⁵³	Case-control	Pakistan	400	30-70	2014-2015	Self-report	Medical records	No	Low
Dankner 2016 ⁵⁴	Cohort	Israel	1,152,122	21-89	2002-2012	Medical records	Medical records	No	Medium
Garcia-Esquinas 2016 ⁵⁵	Case-control	Spanish	2010	20-85	2008-2013	Self-report	Medical records	Yes	Medium
Gini 2016 ⁵⁶	Cohort	Italy	14,420	40-84	Median 3.7 years	Medical records	Medical records	No	Medium
Palmer 2017 ⁵⁷	Cohort	US	54,337	21-69	Mean 15.6 years [†]	Self-report	Self-report	Yes	Medium
Maskarinec 2017 ⁵⁸	Cohort	US	103,721	45-75	Mean 14.8 years [†]	Self-report	Medical records	Yes	Medium
AlSaeed 2017 ⁵⁹	cross-sectional [‡]	Saudi Arabia	110	Mean 47	2000-2006	Medical records	Medical records	Yes	Medium
Crispo 2017 ⁶⁰	Case-control	Italy	1,149	NA [§]	2009-2013	Self-report or Medical records	Medical records	Yes	Medium
Bronsveld 2017 ⁶¹	Cohort	UK	295,996	Median 64	Mean 5.3 years [†]	Medical records	Medical records	No	Low
Fang 2018 ⁶²	Cohort	China	27,200	Mean 60	Mean 6.65 years	Medical records	Medical records	No	Medium

Study ID	Study design	Country of study	N participants	Age (years)	Time frame or follow-up	DM identification	BCa identification	Adjusted for BMI	Quality
Pan 2018 ⁶³	Cohort	China	300,060	30-79	2004-2013	Medical records	Medical records	Yes	High
He 2018 ⁶⁴	Cohort	China	379,521	≥18	2009-2014	Medical records	Medical records	No	Low
Rastad 2019 ⁶⁵	Cohort	US	7,630	45-64	1990-1998	Medical records	Self-report	Yes	Medium
Sanderson 2019 ⁶⁶	Cohort	US	25,366	40-49	Mean 7.0 years [†]	Self-report	Medical records	Yes	Medium
Maskarinec 2019 ⁶⁷	Cohort	Japan	29,818	50.9	Mean 27.6 years	Self-report	Medical records	Yes	Medium
Vatseba 2019 ⁶⁸	Cohort	Ivano-Frankivsk	395,767	NA [§]	2012-2017	Medical records	Medical records	No	Low
Maskarinec 2019 ⁶⁹	Cohort	Iceland	9,606	Mean 53.2	Mean 28.4 years	Medical records	Medical records	Yes	High
Rennert 2020 ⁷⁰	Case-control	Israel	10164	62.2	Starting 1998	Medical records	Medical records	No	Medium
Bjornsdottir 2020 ⁷¹	Cohort	Sweden	1248114	65.2	Median 6.6 years	Medical records	Medical records	No	Medium
Park 2021 ⁷²	Cohort	US	44541	35-74	Median 8.6 years	Medical records	Medical records	Yes	High

BMI, body mass index; DM, diabetes mellitus; NA, not available; UK, the United Kingdom; US, the United States.

[†]If the cohort study did not provide the mean or median length of follow-up, the mean follow-up length was calculated by dividing the total length of follow-up years by the number of participants.

[‡]Lipscombe 2015 and AISaeed 2017 studied the molecular expression of breast cancer at cancer diagnosis. The risk of bias of these two studies was not assessed due to their cross-sectional design.

[§]Unreported.

TABLE 2. Summary estimates of the associations between diabetes and breast cancer risk across subgroups defined by study quality, study design, study region, diabetes ascertainment, adjustment for BMI, year of publication, and menopausal status.

Subgroup	N studies	Summary estimate	95% CI	I ²	P
All studies	70	1.20	1.11-1.29	97.9%	<0.001
Study quality					
High	9	1.12	1.02-1.22	53.0%	0.03
Medium	45	1.15	1.05-1.27	98.4%	<0.001
Low	16	1.42	1.08-1.86	96.6%	<0.001
Study design					
Cohort	46	1.15	1.05-1.27	98.6%	<0.001
Case-control	24	1.26	1.13-1.40	73.1%	<0.001
Study region					
Asia	23	1.34	1.11-1.63	99.1%	<0.001
Americas	23	1.10	1.03-1.17	40.8%	0.02
Europe	21	1.13	1.06-1.21	83.4%	<0.001
Australia	3	1.15	0.99-1.33	32.0%	0.23
Year of publication					
Before 2012	28	1.18	1.09-1.26	77.6%	<0.001
In/after 2012	42	1.20	1.08-1.33	98.7%	<0.001
DM ascertainment					
Self-report	30	1.18	1.09-1.29	62.0%	<0.001
Medical records	37	1.14	1.03-1.26	98.9%	<0.001
Both	3	2.00	1.33-3.01	68.7%	0.04
Adjustment for BMI					
No	31	1.21	1.08-1.35	98.9%	<0.001
Yes	39	1.19	1.06-1.32	89.7%	<0.001
Adjustment for parity					
No	56	1.15	1.06-1.26	98.3%	<0.001

Yes	14	1.39	1.18-1.62	79.7%	<0.001
Menopausal status [†]					
Pre	15	0.95	0.85-1.05	0.00%	0.78
Post	31	1.12	1.07-1.17	65.5%	<0.001

Abbreviations: BMI, body mass index; CI, confidence interval; DM, diabetes mellitus.

[†]The numbers of studies in the subgroups defined by menopausal status do not sum up to 70 because only a subset of the studies assessed pre- and post-menopausal breast cancer separately.

References

1. O'Mara BA, Byers T, Schoenfeld E. Diabetes mellitus and cancer risk: A multisite case-control study. *J Chronic Dis*. 1985;38(5):435-441. doi:10.1016/0021-9681(85)90139-0
2. Bergkvist L, Persson I, Adami HO, Schairer C. Risk Factors for Breast and Endometrial Cancer in a Cohort of Women Treated with Menopausal Oestrogens. *Int J Epidemiol*. 1988;17(4):732-737. doi:10.1093/ije/17.4.732
3. Adami HO, McLaughlin J, Ekblom A, et al. Cancer risk in patients with diabetes mellitus. *Cancer Causes Control*. 1991;2(5):307-314. doi:10.1007/BF00051670
4. La Vecchia C, Negri E, Franceschi S, D'Avanzo B, Boyle P. A case-control study of diabetes mellitus and cancer risk. *Br J Cancer*. 1994;70(5):950-953. doi:10.1038/bjc.1994.427
5. Steenland K, Nowlin S, Palu S. Cancer incidence in the National Health and Nutrition Survey I. Follow-up data: diabetes, cholesterol, pulse and physical activity. *Cancer Epidemiol Biomark Prev Publ Am Assoc Cancer Res Cosponsored Am Soc Prev Oncol*. 1995;4(8):807-811.
6. Goodman MT, Cologne JB, Moriwaki H, Vaeth M, Mabuchi K. Risk Factors for Primary Breast Cancer in Japan: 8-Year Follow-Up of Atomic Bomb Survivors. *Prev Med*. 1997;26(1):144-153. doi:10.1006/pmed.1996.9979
7. Hjalgrim H, Frisch M, Ekblom A, Kyvik KO, Melbye M, Green A. Cancer and diabetes - a follow-up study of two populationbased cohorts of diabetic patients. *J Intern Med*. 2007;241(6):471-475. doi:10.1111/j.1365-2796.1997.tb00004.x
8. Talamini R, Franceschi S, Favero A, Negri E, Parazzini F, La Vecchia C. Selected medical conditions and risk of breast cancer. *Br J Cancer*. 1997;75(11):1699-1703. doi:10.1038/bjc.1997.289
9. Wideroff L, Gridley G, Chow WH, et al. Cancer Incidence in a Population-Based Cohort of Patients Hospitalized With Diabetes Mellitus in Denmark. *JNCI J Natl Cancer Inst*. 1997;89(18):1360-1365. doi:10.1093/jnci/89.18.1360

10. Weiderpass E, Gridley G, Persson I, Nyrén O, Ekblom A, Adami HO. Risk of endometrial and breast cancer in patients with diabetes mellitus. *Int J Cancer*. 1997;71(3):360-363. doi:10.1002/(SICI)1097-0215(19970502)71:3<360::AID-IJC9>3.0.CO;2-W
11. Weiss HA, Brinton LA, Potischman NA, et al. Breast cancer risk in young women and history of selected medical conditions. *Int J Epidemiol*. 1999;28(5):816-823. doi:10.1093/ije/28.5.816
12. Baron JA, Weiderpass E, Newcomb PA, et al. Metabolic disorders and breast cancer risk (United States). :6.
13. Michels KB, Solomon CG, Hu FB, et al. Type 2 Diabetes and Subsequent Incidence of Breast Cancer in the Nurses' Health Study. *Diabetes Care*. 2003;26(6):1752-1758. doi:10.2337/diacare.26.6.1752
14. Jee SH, Ohrr H, Sull JW, Yun JE, Ji M, Samet JM. Fasting Serum Glucose Level and Cancer Risk in Korean Men and Women. :9.
15. Khan M, Mori M, Fujino Y, et al. Site-specific Cancer Risk Due to Diabetes Mellitus History: Evidence from the Japan Collaborative Cohort (JACC) Study. :8.
16. Inoue M. Diabetes Mellitus and the Risk of Cancer: Results From a Large-Scale Population-Based Cohort Study in Japan. *Arch Intern Med*. 2006;166(17):1871. doi:10.1001/archinte.166.17.1871
17. Rapp K, Schroeder J, Klenk J, et al. Fasting blood glucose and cancer risk in a cohort of more than 140,000 adults in Austria. *Diabetologia*. 2006;49(5):945-952. doi:10.1007/s00125-006-0207-6
18. Wu AH, Yu MC, Tseng CC, Stanczyk FZ, Pike MC. Diabetes and risk of breast cancer in Asian-American women. *Carcinogenesis*. 2007;28(7):1561-1566. doi:10.1093/carcin/bgm081
19. Sellers TA, Jensen LE, Vierkant RA, et al. Association of diabetes with mammographic breast density and breast cancer in the Minnesota breast cancer family study. *Cancer Causes Control*. 2007;18(5):505-515. doi:10.1007/s10552-007-0128-9
20. Beji NK, Reis N. Risk factors for breast cancer in Turkish women: a hospital-based case-control study. *Eur J Cancer Care (Engl)*. 2007;16(2):178-184. doi:10.1111/j.1365-2354.2006.00711.x

21. Kuriki K, Hirose K, Tajima K. Diabetes and cancer risk for all and specific sites among Japanese men and women. *Eur J Cancer Prev.* 2007;16(1):83-89. doi:10.1097/01.cej.0000228404.37858.40
22. Rollison DE, Giuliano AR, Sellers TA, et al. Population-based Case-Control Study of Diabetes and Breast Cancer Risk in Hispanic and Non-Hispanic White Women Living in US Southwestern States. *Am J Epidemiol.* 2008;167(4):447-456. doi:10.1093/aje/kwm322
23. Ogunleye AA, Ogston SA, Morris AD, Evans JMM. A cohort study of the risk of cancer associated with type 2 diabetes. *Br J Cancer.* 2009;101(7):1199-1201. doi:10.1038/sj.bjc.6605240
24. Sanderson M, Peltz G, Perez A, et al. Diabetes, physical activity and breast cancer among Hispanic women. *Cancer Epidemiol.* 2010;34(5):556-561. doi:10.1016/j.canep.2010.06.001
25. Chodick G, Heymann AD, Rosenmann L, et al. Diabetes and risk of incident cancer: a large population-based cohort study in Israel. *Cancer Causes Control.* 2010;21(6):879-887. doi:10.1007/s10552-010-9515-8
26. Hemminki K, Li X, Sundquist J, Sundquist K. Risk of Cancer Following Hospitalization for Type 2 Diabetes. *The Oncologist.* 2010;15(6):548-555. doi:10.1634/theoncologist.2009-0300
27. Bowker SL, Richardson K, Marra CA, Johnson JA. Risk of Breast Cancer After Onset of Type 2 Diabetes. *Diabetes Care.* 2011;34(12):2542-2544. doi:10.2337/dc11-1199
28. Lambe M, Wigertz A, Garmo H, Walldius G, Jungner I, Hammar N. Impaired glucose metabolism and diabetes and the risk of breast, endometrial, and ovarian cancer. *Cancer Causes Control.* 2011;22(8):1163-1171. doi:10.1007/s10552-011-9794-8
29. Ronco AL, Stefani ED, Deneo-Pellegrini H. Risk Factors for Premenopausal Breast Cancer: A Case-control Study in Uruguay. *Asian Pac J Cancer Prev.* 2012;13(6):2879-2886. doi:10.7314/APJCP.2012.13.6.2879
30. Ronco AL, Stefani ED, Deneo-Pellegrini H, Quarneti A. Diabetes, Overweight and Risk of Postmenopausal Breast Cancer: A Case-Control Study in Uruguay. *Asian Pac J Cancer Prev.* 2012;13(1):139-146. doi:10.7314/APJCP.2012.13.1.139

31. Reeves KW, McLaughlin V, Fredman L, Ensrud K, Cauley JA. Components of metabolic syndrome and risk of breast cancer by prognostic features in the study of osteoporotic fractures cohort. *Cancer Causes Control*. 2012;23(8):1241-1251. doi:10.1007/s10552-012-0002-2
32. Yeh HC, Platz EA, Wang NY, Visvanathan K, Helzlsouer KJ, Brancati FL. A Prospective Study of the Associations Between Treated Diabetes and Cancer Outcomes. *Diabetes Care*. 2012;35(1):113-118. doi:10.2337/dc11-0255
33. Chlebowski RT, McTiernan A, Wactawski-Wende J, et al. Diabetes, Metformin, and Breast Cancer in Postmenopausal Women. *J Clin Oncol*. 2012;30(23):2844-2852. doi:10.1200/JCO.2011.39.7505
34. Zhang PH, Chen ZW, Lv D, et al. Increased risk of cancer in patients with type 2 diabetes mellitus: A retrospective cohort study in China. *BMC Public Health*. 2012;12(1):567. doi:10.1186/1471-2458-12-567
35. Magliano DJ, Davis WA, Shaw JE, Bruce DG, Davis TME. Incidence and predictors of all-cause and site-specific cancer in type 2 diabetes: the Fremantle Diabetes Study. *Eur J Endocrinol*. 2012;167(4):589-599. doi:10.1530/EJE-12-0053
36. Bosetti C, Rosato V, Polesel J, et al. Diabetes Mellitus and Cancer Risk in a Network of Case-Control Studies. *Nutr Cancer*. 2012;64(5):643-651. doi:10.1080/01635581.2012.676141
37. Attner B, Landin-Olsson M, Lithman T, Noreen D, Olsson H. Cancer among patients with diabetes, obesity and abnormal blood lipids: a population-based register study in Sweden. *Cancer Causes Control*. 2012;23(5):769-777. doi:10.1007/s10552-012-9946-5
38. Redaniel MTM, Jeffreys M, May MT, Ben-Shlomo Y, Martin RM. Associations of type 2 diabetes and diabetes treatment with breast cancer risk and mortality: a population-based cohort study among British women. *Cancer Causes Control*. 2012;23(11):1785-1795. doi:10.1007/s10552-012-0057-0
39. Carstensen B, Witte DR, Friis S. Cancer occurrence in Danish diabetic patients: duration and insulin effects. *Diabetologia*. 2012;55(4):948-958. doi:10.1007/s00125-011-2381-4
40. Wang XL, Jia CX, Liu LY, Zhang Q, Li YY, Li L. Obesity, diabetes mellitus, and the risk of female breast cancer in Eastern China. *World J Surg Oncol*. 2013;11(1):71. doi:10.1186/1477-7819-11-71

41. Jung SJ, Song M, Choi JY, et al. Association of Selected Medical Conditions With Breast Cancer Risk in Korea. *J Prev Med Pub Health*. 2013;46(6):346-352. doi:10.3961/jpmph.2013.46.6.346
42. Nakamura K, Wada K, Tamai Y, et al. Diabetes mellitus and risk of cancer in Takayama: A population-based prospective cohort study in Japan. *Cancer Sci*. 2013;104(10):1362-1367. doi:10.1111/cas.12235
43. Mourouti N, Papavagelis C, Kontogianni MD, et al. Cardiometabolic Factors and Breast Cancer: A Case-Control Study in Women. *Open Hypertens J*. 2013;5(1):49-49. doi:10.2174/1876526201305010049
44. Salinas-Martínez AM, Flores-Cortés LI, Cardona-Chavarría JM, et al. Prediabetes, Diabetes, and Risk of Breast Cancer: A Case-Control Study. *Arch Med Res*. 2014;45(5):432-438. doi:10.1016/j.arcmed.2014.06.004
45. Onitilo AA, Stankowski RV, Berg RL, et al. Breast cancer incidence before and after diagnosis of type 2 diabetes mellitus in women: increased risk in the prediabetes phase. *Eur J Cancer Prev*. 2014;23(2):76-83. doi:10.1097/CEJ.0b013e32836162aa
46. Hsieh SH, Chiou WK, Wang MH, Lin JD. Association of Body Weight With the Risk for Malignancies in Hospitalized Patients With or Without Diabetes Mellitus in Taiwan. *J Investig Med*. 2014;62(1):37-42. doi:10.2310/JIM.0000000000000004
47. Lipscombe LL, Fischer HD, Austin PC, et al. The association between diabetes and breast cancer stage at diagnosis: a population-based study. *Breast Cancer Res Treat*. 2015;150(3):613-620. doi:10.1007/s10549-015-3323-5
48. Wang M, Cheng N, Zheng S, et al. Metabolic syndrome and the risk of breast cancer among postmenopausal women in north-west China. *Climacteric*. 2015;18(6):852-858. doi:10.3109/13697137.2015.1071346
49. Wang M, Hu RY, Wu HB, et al. Cancer risk among patients with type 2 diabetes mellitus: a population-based prospective study in China. *Sci Rep*. 2015;5(1):11503. doi:10.1038/srep11503
50. Liaw YP, Ko PC, Jan SR, et al. Implications of Type1/2 Diabetes Mellitus in Breast Cancer Development: A General Female Population-based Cohort Study. *J Cancer*. 2015;6(8):734-739. doi:10.7150/jca.12197
51. Harding JL, Shaw JE, Peeters A, Cartensen B, Magliano DJ. Cancer Risk Among People With Type 1 and Type 2 Diabetes: Disentangling True Associations, Detection Bias, and Reverse Causation. *Diabetes Care*. 2015;38(2):264-270. doi:10.2337/dc14-1996

52. Gong Z, Aragaki AK, Chlebowski RT, et al. Diabetes, metformin and incidence of and death from invasive cancer in postmenopausal women: Results from the women's health initiative: Diabetes, Metformin and Incidence and Death from Invasive Cancer. *Int J Cancer*. 2016;138(8):1915-1927. doi:10.1002/ijc.29944
53. Tabassum I, Mahmood H, Faheem M. Type 2 Diabetes Mellitus as a Risk Factor for Female Breast Cancer in the Population of Northern Pakistan. :4.
54. Dankner R, Boffetta P, Balicer RD, et al. Time-Dependent Risk of Cancer After a Diabetes Diagnosis in a Cohort of 2.3 Million Adults. *Am J Epidemiol*. 2016;183(12):1098-1106. doi:10.1093/aje/kwv290
55. García-Esquinas E, Guinó E, Castaño-Vinyals G, et al. Association of diabetes and diabetes treatment with incidence of breast cancer. *Acta Diabetol*. 2016;53(1):99-107. doi:10.1007/s00592-015-0756-6
56. Gini A, Bidoli E, Zanier L, et al. Cancer among patients with type 2 diabetes mellitus: A population-based cohort study in northeastern Italy. *Cancer Epidemiol*. 2016;41:80-87. doi:10.1016/j.canep.2016.01.011
57. Palmer JR, Castro-Webb N, Bertrand K, Bethea TN, Denis GV. Type II Diabetes and Incidence of Estrogen Receptor Negative Breast Cancer in African American Women. *Cancer Res*. 2017;77(22):6462-6469. doi:10.1158/0008-5472.CAN-17-1903
58. Maskarinec G, Jacobs S, Park SY, et al. Type II Diabetes, Obesity, and Breast Cancer Risk: The Multiethnic Cohort. *Cancer Epidemiol Biomarkers Prev*. 2017;26(6):854-861. doi:10.1158/1055-9965.EPI-16-0789
59. Alsaeed E, Albeeshi M, Alsari M, Alowaini F, Alsaawi A, Bahabri I. Obesity do not Affect Tumor Expression of Estrogen and. *KUWAIT Med J*. Published online 2017:5.
60. Crispo A, Augustin LSA, Grimaldi M, et al. Risk Differences Between Prediabetes And Diabetes According To Breast Cancer Molecular Subtypes: DIABETES AND RISK OF BREAST CANCER SUBTYPES. *J Cell Physiol*. 2017;232(5):1144-1150. doi:10.1002/jcp.25579
61. Bronsveld HK, Peeters PJHL, de Groot MCH, de Boer A, Schmidt MK, De Bruin ML. Trends in breast cancer incidence among women with type-2 diabetes in British general practice. *Prim Care Diabetes*. 2017;11(4):373-382. doi:10.1016/j.pcd.2017.02.001

62. Fang Y, Zhang X, Xu H, et al. Cancer risk in Chinese diabetes patients: a retrospective cohort study based on management data. *Endocr Connect*. 2018;7(12):1415-1423. doi:10.1530/EC-18-0381
63. Pan XF, He M, Yu C, et al. Type 2 Diabetes and Risk of Incident Cancer in China: A Prospective Study Among 0.5 Million Chinese Adults. *Am J Epidemiol*.:12.
64. He X, Shi L, Wu J. Retrospective database analysis of cancer risk in patients with type 2 diabetes mellitus in China. *Curr Med Res Opin*. 2018;34(6):1089-1098. doi:10.1080/03007995.2017.1421527
65. Rastad H, Parsaeian M, Shirzad N, Mansournia MA, Yazdani K. Diabetes mellitus and cancer incidence: the Atherosclerosis Risk in Communities (ARIC) cohort study. *J Diabetes Metab Disord*. 2019;18(1):65-72. doi:10.1007/s40200-019-00391-5
66. Sanderson M, Lipworth L, Shrubsole MJ, et al. Diabetes, obesity, and subsequent risk of postmenopausal breast cancer among white and black women in the Southern Community Cohort Study. *Cancer Causes Control*. 2019;30(5):425-433. doi:10.1007/s10552-019-01164-4
67. Maskarinec G, Sadakane A, Sugiyama H, Brenner A, Tatsukawa Y, Grant E. Type 2 diabetes, obesity, and breast cancer risk among Japanese women of the atomic bomb survivor cohort. *Cancer Epidemiol*. 2019;60:179-184. doi:10.1016/j.canep.2019.04.009
68. Vatseba TS, Sokolova LK. BREAST CANCER IN WOMEN WITH DIABETES MELLITUS TYPE 2. *World Med Biol*. 2019;15(68):030. doi:10.26724/2079-8334-2019-2-68-30-34
69. Maskarinec G, Haraldsdóttir Á, Einarsdóttir K, et al. Type 2 diabetes and obesity in midlife and breast cancer risk in the Reykjavik cohort. *Cancer Causes Control*. 2019;30(10):1057-1065. doi:10.1007/s10552-019-01213-y
70. Rennert G, Rennert HS, Gronich N, Pinchev M, Gruber SB. Use of metformin and risk of breast and colorectal cancer. *Diabetes Res Clin Pract*. 2020;165:108232. doi:10.1016/j.diabres.2020.108232
71. Bjornsdottir HH, Rawshani A, Rawshani A, et al. OPEN A national observation study. *Sci Rep*.:13.
72. Park YMM, Bookwalter DB, O'Brien KM, Jackson CL, Weinberg CR, Sandler DP. A prospective study of type 2 diabetes, metformin use, and risk of breast cancer. *Ann Oncol*. 2021;32(3):351-359. doi:10.1016/j.annonc.2020.12.008

