

1 **Ongoing transmission of human onchocerciasis in the district of Mont Ngafula 1 in**  
2 **Kinshasa after two decades of uninterrupted onchocerciasis annual mass campaigns**  
3 **using community directed treatment with Ivermectin strategy.**

4 **Makenga Bof Jean Claude<sup>1</sup>, Mansiangi Paul<sup>2†</sup>, Zanga Josué<sup>2</sup>, Ilunga Félicien<sup>3</sup>, Ako Aime**  
5 **Gilles Adjami<sup>4</sup>, Sanfo Moussa Sounkalo<sup>4</sup>, Didier Bakajika<sup>4</sup> and Coppieters Yves<sup>1</sup>**

6  
7 1. School of Public Health, Université Libre de Bruxelles (ULB), Route de Lennik 808, 1070 Brussels, Belgium

8 2. School of Public Health, Faculty of medicine, Université de Kinshasa ((UNIKIN), Lemba, Kinshasa, DRC)

9 3. Institut Supérieur des Techniques Médicales (ISTM), Lemba, Kinshasa, DRC

10 4. Expanded Special Project for Elimination of Neglected Tropical Diseases (ESPEN) , WHO, Brazzaville,  
11 Republic of Congo

12  
13 **Corresponding author**

14 Makenga Bof Jean Claude

15 Ecole de Santé Publique

16 Université Libre de Bruxelles (ULB),

17 Route de Lennik 808, 1070 Brussels, Belgium.

18 Mobile: +32 493 93 96 35

19 Email: [jmakebof@yahoo.fr](mailto:jmakebof@yahoo.fr)

20  
21 †Deceased

22 **Abstract**

23 **Background:** The district of Mont Ngafula I in Kinshasa, the capital city of the Democratic  
24 Republic of Congo (DRC) has been treating for onchocerciasis over the last two decades using  
25 community directed treatment with ivermectin strategy (CDTI). This study aimed to determine  
26 the transmission of onchocerciasis in blackflies after two decades of uninterrupted annual  
27 ivermectin mass campaigns using CDTI.

28 **Material:** Blackflies were collected at Kimwenza site in the district of Mont Ngafula 1 along  
29 Lukaya river from 1<sup>st</sup> August 2019 to 31<sup>st</sup> July 2020 using human landing catching techniques.  
30 Entomological indicators (biting rate, transmission potentials and infectivity rate) were  
31 calculated using O-150 Pool screening PCR technique.

32 **Results:** A total of 12,217 blackflies of *Simulium squamosum* species were collected during  
33 the study period. Two daily cycles of high biting were identified between 08:00 and 09:00 a.m.  
34 and 16:00 and 17:00. Low biting rates were observed between 11:00 a.m. and 13:00. The daily  
35 and annual biting rates were 774 and 22,380 bites/person ( $p = < 0.001$ ). The infectivity rate  
36 was 0.09 % (95% CI: 0.04 - 0.17). The calculated annual transmission potential was 21).

37 **Conclusions:** The study showed an ongoing transmission of onchocerciasis in the study site  
38 despite two decades of uninterrupted ivermectin mass distribution campaigns using community  
39 directed treatment with ivermectin. There is an urgent need for alternative treatment strategies  
40 to accelerate the interruption of transmission of onchocerciasis.

41  
42 **Keywords:** *biting rate, disease transmission, onchocerciasis, Onchocerca volvulus, black fly,*  
43 *Kinshasa.*

**NOTE:** This preprint reports new research that has not been certified by peer review and should not be used to guide clinical practice.

## 44 Author Summary

45 Human onchocerciasis, also known as river blindness, is a neglected tropical disease targeted  
46 for elimination of transmission by the World Health Organization (WHO). Both  
47 epidemiological and entomological criteria are highly needed to confirm the interruption and  
48 elimination of transmission of onchocerciasis. Following rapid epidemiological mapping of  
49 Onchocerciasis conducted in 2001 in Kinshasa, the capital city of the Democratic Republic of  
50 Congo, the medical district of Mont Ngafula 1, Nsele and Binza Ozone were found to be meso-  
51 endemic for onchocerciasis and were treated using community directed treatment with  
52 ivermectin strategy (CDTI) for the last two decades. The aim of this study was to determine  
53 the impact of Ivermectin community mass distribution on onchocerciasis transmission in  
54 blackflies in the health district of Mont Ngafula 1 after two decades of preventive  
55 chemotherapy. A total of 12,217 blackflies were collected from 1<sup>st</sup> August 2019 to 31<sup>st</sup> July  
56 2020 using human landing catching technique. Biting rate and annual potential transmission  
57 were calculated and infectivity rate determined using the O-150 PCR technique. The findings  
58 confirmed an ongoing transmission of onchocerciasis in blackflies in the health district of Mont  
59 Ngafula 1 despite two decades on uninterrupted Ivermectin mass administration. There is an  
60 urgent call for alternative treatment strategies to accelerate the interruption of transmission of  
61 onchocerciasis in the study site.

## 62 1. Introduction

63 Human onchocerciasis, also called "*river blindness*", is caused by the filarial worm  
64 *Onchocerca volvulus*, transmitted to humans through exposure to repeated bites of infected  
65 blackflies of the genus *Simulium* that breed in fast-flowing streams and rivers [1]. This parasitic  
66 disease is one of the twenty neglected tropical diseases (NTDs) targeted for elimination by the  
67 World Health Organization (WHO) [2]. In 2021, more than 244.6 million people were  
68 identified worldwide as living in endemic settings requiring [3], Ivermectin preventive  
69 chemotherapy of which 243.7 were in the WHO African region.

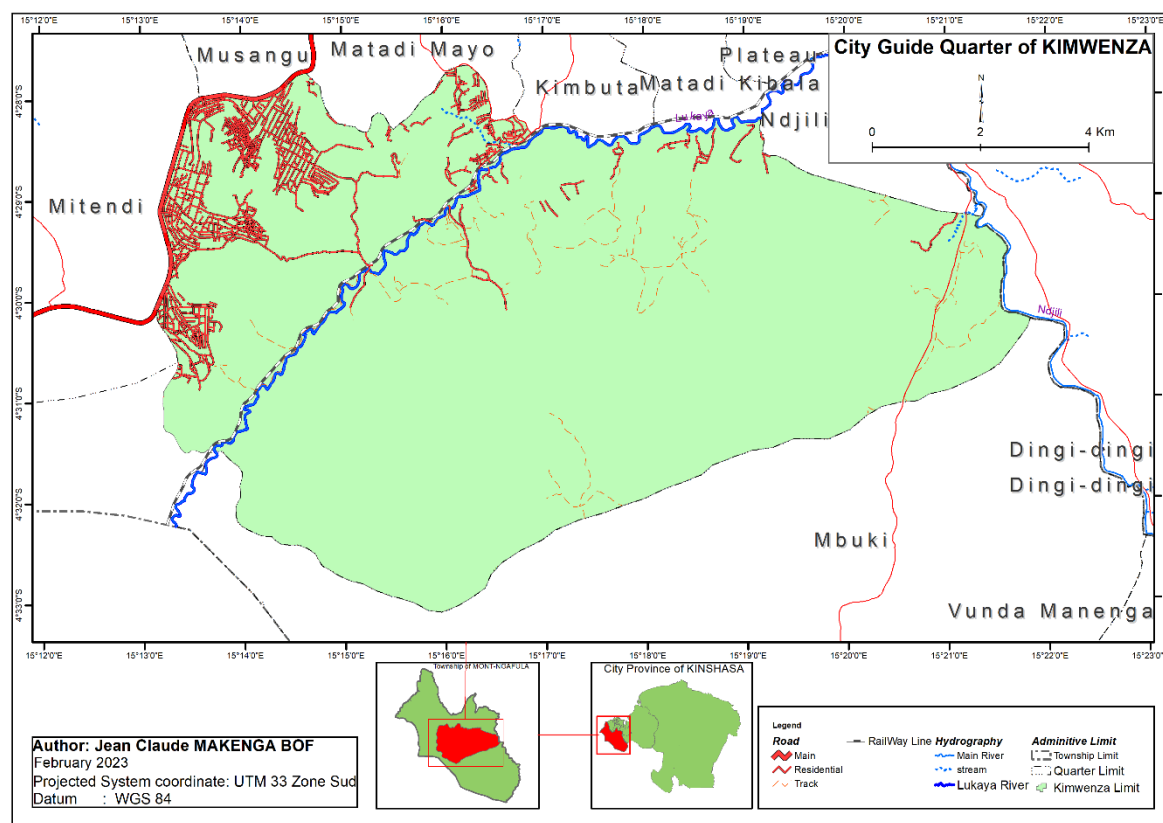
70 The Democratic Republic of Congo (DRC) is one of the 27 countries in the WHO African  
71 region known to be endemic for onchocerciasis [1]. The disease is endemic in all the 26  
72 administrative provinces of the country, including the city-province of Kinshasa [4]. First  
73 blackfly breeding sites in Kinshasa were discovered at the beginning of the 20<sup>th</sup> century [5].  
74 Subsequently, several studies carried out until 1945 in this focus determined the bio-ecology  
75 of the vector and specified its critical role in the transmission of the infection [5]. A 5-year  
76 vector control study was conducted from 1948 to 1952, using dichlorodiphenyltrichloroethane  
77 (DDT) with the aim to “eradicate” the vector in the Kinshasa focus [6]. Unfortunately, 10 years  
78 after this successful project the resurgence of blackflies was observed in the project area [7].  
79 Rapid Epidemiological Mapping of Onchocerciasis (REMO) conducted by the National  
80 Onchocerciasis Control Program (NOCP) in 2001 with the financial and technical support of  
81 the former African Program for Onchocerciasis control (APOC) to determine the endemicity  
82 status of onchocerciasis in Kinshasa found three medical districts to be meso-endemic for  
83 onchocerciasis namely Binza-Ozone, Nsele and Mont Ngafula 1 and therefore were eligible  
84 for Ivermectin mass distribution using the community directed treatment with ivermectin  
85 (CDTI) strategy. CDTI strategy has been implemented in these three districts for almost two  
86 decades [6 - 11].

87 After almost two decades of CDTI strategy in the city province of Kinshasa, it is appropriate  
88 to determine its impact on the transmission in order to better guide future programmatic actions.  
89 The current study aims to determine the transmission of onchocerciasis in blackflies at the site  
90 in the medical district of Mont-Ngafula 1.

## 91 2. Materials and methods

### 92 2.1. Description of the study environment

93 Kinshasa, the capital of the DRC, is a large city (area: 9,965 Km<sup>2</sup>), with 24 municipalities and  
94 four administrative districts, with an estimated population of 11 million (population density:  
95  $\pm 3,600$  inhabitants/Km<sup>2</sup>) [12].



96

97 **Figure 1:** Map of the city-province of Kinshasa showing the site under study: Kimwenza Site  
98 in Mont-Ngafula 1, DRC, Democratic Republic of Congo.

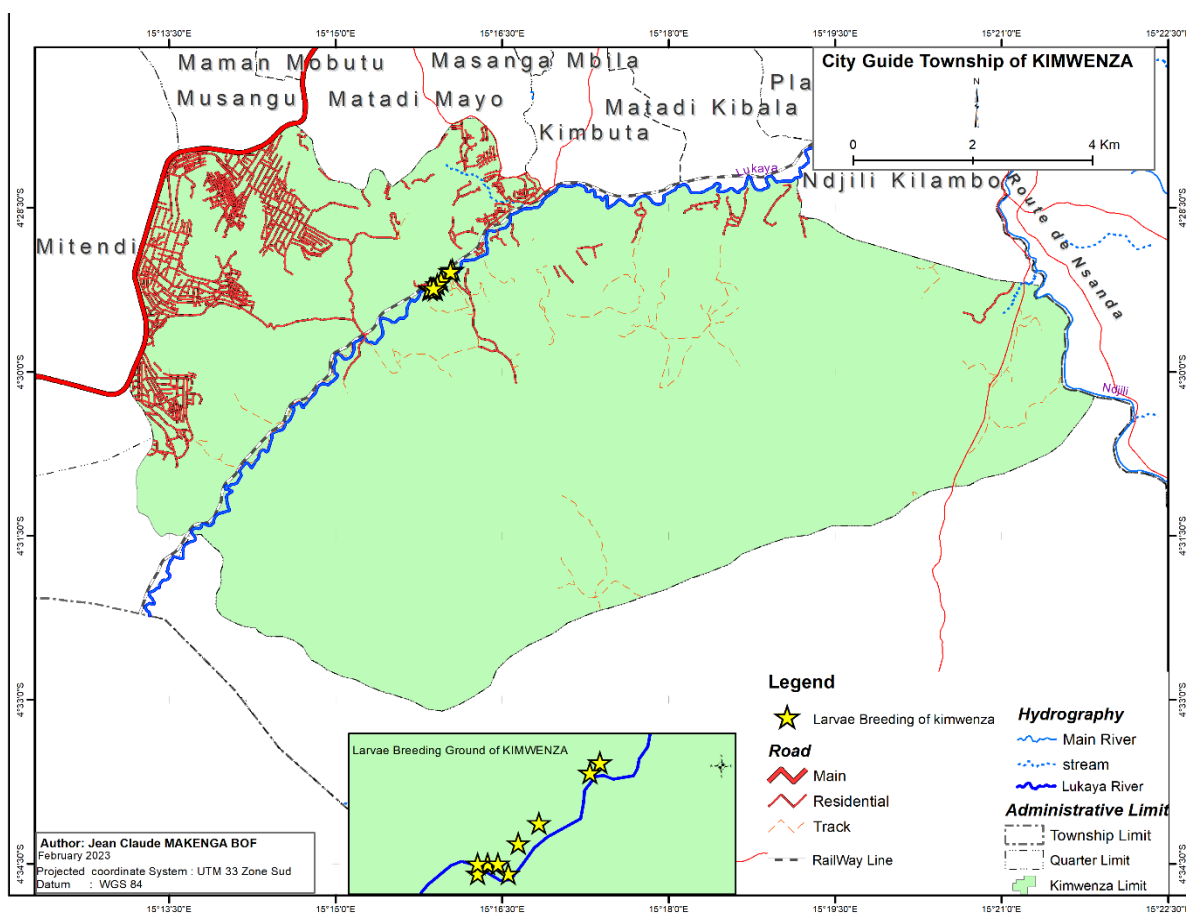
99 Kinshasa has a tropical savannah climate, equatorial in nature (hot and humid), with a rainy  
100 season lasting 8 months and a dry one for 4 months. The average annual temperature and  
101 precipitation are 25.3°C and 1,273.9 mm, respectively [12,13]. The dry season (tropical winter)  
102 which starts in June and ends in September, is characterized by rare and low rainfall and lowest  
103 temperatures [12,13]. During the rainy season (tropical summer), from October to May, the  
104 precipitation ranges between 1000 and 1500 mm [12,13], while the temperature ranges between  
105 30-35°C (peaks at 40°C) [12,13].

106 Rivers of various sizes originating from the hills drain the plains of Kinshasa and flow from  
107 south to north to the Congo River [18,20]. Lakes (smaller waterbodies than rivers), such as *Lac*

108 *Ma Vallée* and *Lac Vert*, are also located in Kinshasa [18,20]. Some of these waterbodies  
109 exhibit geographical characteristics that enable rapid waterfalls favorable for the breeding of  
110 *Simulium vectors*, particularly, the Lukaya River in rural Kimwenza and Congo River in the  
111 urban part of the bay of Gombe [12,14].

112 The study was conducted in municipality of Mont Ngafula 1 [14]. Mont- Ngafula 1 is located  
113 in the southern region of Kinshasa, in the hilly areas of rural Kimwenza occupied by the Lukaya  
114 River. It is a recent settlement with a dominant highland plateau at an altitude of 493 meters  
115 near the Lukaya, little Waterfalls and tourist site "Lola Ya Bonobo" (**Figure 1**) [14]. The  
116 Kimwenza site was chosen due to lack of baseline and follow up onchocerciasis entomological  
117 studies and to assess the impact of uninterrupted preventive chemotherapy interventions on the  
118 transmission in blackflies. The municipality of Mont Ngafula was explored to locate the roosts  
119 of pre-imaginal forms of black flies, identify their fixation supports, and select the collection  
120 points using Enyong's criteria [15]. The best collection points were defined as the one capture  
121 points of anthropophilic adult black flies for determining entomological indices (Kimwenza  
122 site) at 4° 27' 33" South, 15° 17' 20" East).

123



125 **Figure 2:** Geographical coordinates of the Kimwenza site in Mont-Ngafula DRC, Democratic  
126 Republic of Congo showing the collection site of black flies ("*Simulia*") from August 2019 to  
127 July 2020.

128 **2.2. Ethical clearance**

129 The study was approved by the ethics committee of the Kinshasa School of Public Health  
130 (approval number ESP / CE / 139/2019). The data were collected following the ethical  
131 principles defined in the Declaration of Helsinki. Informed and written consent were obtained  
132 from the two black fly catchers used as human bait in this study. No financial incentive was  
133 given to blackfly catchers. However, they were provided medical examinations after  
134 participating in the study. The two blackfly catchers alternated after each hour to reduce their  
135 exposure times.

### 136 2.3. Capture of adult black flies

137 The study was conducted in a randomly chosen 24-week period, from August 1, 2019 to July  
138 31, 2020. Blackfly catchers were trained on “human landing collection techniques” [16].  
139 Berre’s method [11,17,18], slightly modified, were used to collect adult blackfly females.  
140 Blackflies were collected during five consecutive days per month, from 07:00 to 18:00 by 2  
141 vector collectors working alternatively per hour using individual 6 ml polystyrene test tubes.  
142 (Greiner Ref: 148112). Collection tubes containing collected specimens were packed in wet  
143 cotton wool and kept in a well-shady place. Collected specimens were at the end of the day  
144 transferred in bottles containing alcohol. Each bottle was labelled with the catching point, date,  
145 and number of females preserved and all bottles were transferred to the bioecology laboratory  
146 of the school of Public Health of the University of Kinshasa (ESPK) for morphological  
147 examination and identification.

### 148 2.4. Identification by morphological criteria

149 Morphological identification was carried out at the bioecology laboratory of the ESPK using a  
150 VWR stereomicroscope model Stemi DV4. Blackflies were first anesthetized with chloroform  
151 vapor, and the morphological features were observed following the dichotomous keys proposed  
152 by Crosskey [19]. A few numbers of collected flies were dissected to determine their parity.  
153 The remaining flies were transferred into a vial (28 ml Universal Bottle, Ref: G751/01 Eurostar  
154 Scientific Ltd) filled with 80° alcohol. Each bottle was labelled (catching point, date, and  
155 number of females preserved) and shipped to the WHO/ESPEN laboratory in Ouagadougou,  
156 Burkina Faso for molecular analysis.

### 157 2.5. Determination of entomological indices

158  
159 The biting rate transmission potential and infectivity rate [16, 20, 21], were used to determine  
160 entomological indices. The monthly biting rates (MBR) is the theoretical total number of bites  
161 that would be received by a person exposed for 11 hours a day near a river in one month. The  
162 Annual Biting Rate (ABR) is the sum of the 12 monthly biting rates. The Annual Transmission  
163 Potential (ATP) is the theoretical estimation of the total number of *O. volvulus* larvae that a  
164 person placed at the catching point under the conditions described above would receive in one  
165 year [16, 20, 22]. The vector infectivity rate refers to the number of infectious females (females  
166 with cephalic L3 parasites) per 1000 parous females, or the number of infectious flies per 2000  
167 females analyzed (if the parturity rate is unknown, it is assumed to be 50% of the total  
168 population of biting females). In the present study, transmission and infectivity rates were  
169 determined using O-150 PCR technique, which is a diagnostic technique that aims to determine  
170 the level of infective-stage of *O. volvulus* larvae in the vector population as analyzed by  
171 polymerase chain reaction (PCR) technique based on amplification using *O. volvulus* specific  
172 DNA targeting probes O-150 repeat family sequence [23 - 27].

## 173 2.6. DNA extraction and purification

174 At the ESPEN Laboratory in Ouagadougou, *Simulium damnosum s.l.* flies were sorted out for  
175 the second time and pools were formed based on daily collection of blackflies, up to 100  
176 blackflies maximum per pool. For each pool, the heads and bodies were separated by freezing  
177 and agitation and sifting by passage through a 25-mesh sieve, as previously described [17].  
178 Only the head pools were processed. DNA extractions were carried out in sets of 20 samples  
179 each, with each set containing 18 fly pools and 2 sham extractions to ensure that the DNA  
180 extraction process remains free of contamination. The pools of heads were placed in a 1.5 ml  
181 microcentrifuge tube containing 200ul of 10mM Tris-HCl, 1mM EDTA (pH 8.0), and  
182 homogenized with a disposable plastic pestel. Homogenates were then subjected to proteinase  
183 K at final concentration of 2 mg/mL for 2 hours at 56°C. To digest the included proteins of *O.*  
184 *volvulus*, dithiothreitol was added in samples to a final concentration of 20 mM and heated to  
185 100°C for 30 minutes, to disrupt the di-Sulfide bonds abundant in the parasitic cuticle [28].  
186 Boiling was followed by a series of three freeze-thaw cycles to release the DNA parasite into  
187 the media. The homogenates were centrifuged at 14000g for 5 minutes at 5°C and the  
188 supernatant placed into a new pre-labelled tube. The solutions were brought to a final  
189 concentration of 100 mM Tris-HCl (pH 7.5) 100 mM NaCl. Two oligonucleotide probes for  
190 the capture of *O. volvulus* DNA were used: One probe to capture the parasite genomic DNA  
191 (OVS2-biotin probe) and the other probe to capture the parasite mitochondrial DNA  
192 (Ovmito2353-biotin) [29 - 31]. A total of 5 ml of a 0.5 mM of each probe solution were added  
193 to each sample. Their DNA sequence are: for OVS2-biotin probe's DNA sequence is as follow:  
194 (5'B-AAATCTCAAAAACGGGTACATA-3', where B=biotin; while that of the Ovmito2353-  
195 biotin probe is: (5' B-GTTTTAGGCTATTGGGCTG 3', where B = biotin). The samples were  
196 then heated to 95°C for three minutes and allowed to cool slowly to room temperature. While  
197 the probe was annealing to the DNA in the solution, 1250 ml of Dynal M-280 streptavidin  
198 coated beads (Invitrogen) were aliquoted in 25 wells of a 96 well tissue culture plate. The plate  
199 was placed on a magnetic capture unit (DynaMag™-96 Bottom collection magnet, 96 well  
200 format, Invitrogen) and the beads collected for 2 minutes. The beads were then washed five  
201 times with 200 µl binding buffer (100 mM Tris-HCl (pH 7.5) 100 mM NaCl) per wash,  
202 resuspended in 50 ul of binding buffer and 10 µl was added to the 125 samples. The samples  
203 were incubated at 4°C overnight on a microplate Shaker & Incubator to permit the  
204 oligonucleotide-DNA hybrids to bind to the beads. The samples were placed in the magnetic  
205 separator for two minutes to capture the beads and the supernatant discarded. The beads were  
206 resuspended in 150 µl of binding buffer by pipetting, and the beads captured by placing the  
207 microplates in the magnetic separator for two minutes. The wash step was repeated five times.  
208 The beads were then resuspended in 20 µl of sterile water, heated to 80°C for 2 minutes and  
209 cooled rapidly on ice for two minutes. The beads were removed by placing the microplates in  
210 the magnetic capture unit, and the supernatant containing the purified DNA transferred to a  
211 new microplate and stored at -94°C.

## 212 2.7. O-150 PCR analysis

213 The purified DNA were tested for *O. volvulus* parasites by using a PCR assay specific for *O.*  
214 *volvulus*, as previously described [29, 32 - 35]. Seventy-four samples were tested in wells B1  
215 to H2, Row A was reserved for 12 controls including 10 PCR negative controls (wells A1 to  
216 A10) and 2 positive controls (A11-A12). The positive control in A11 contained the minimum  
217 amount of positive control DNA consistently detected by PCR amplification conditions, as

218 determined by an initial titration study. This control was performed to ensure that all reactions  
219 were running at maximum efficiency. The positive control in well A12 contained the same  
220 minimum amount of positive control DNA mixed with 2.5  $\mu$ l of a DNA preparation from a  
221 pool that tested negative in a previous set of reactions. This control ensures that no inhibitors  
222 are present in the fly DNA preparations. 2.5  $\mu$ l of the purified DNA containing genomic and  
223 mitochondrial DNA of *O. volvulus* were used as templates for the PCR amplifications carried  
224 out in a total volume of 50  $\mu$ l containing 0.5 mmol/l of each O-150 primers : 5'-  
225 GATTYTTCCGRCGAANARCGC-3' and 5'-B-GCNRTRTAAATNTGNAAATTC-3',  
226 where B= biotin; N= A, G, C, or T; Y=C or T; and R=A or G. Reaction mixtures also contained  
227 60 mM Tris-HCl, (pH 9.0), 15 mM (NH<sub>4</sub>)<sub>2</sub>SO<sub>4</sub>, 2 mM MgCl<sub>2</sub>, 0.2 mM each of dATP, dCTP,  
228 dGTP and dTTP, and 2.5 units of Taq polymerase. Cycling conditions consisted of five cycles  
229 of one minute at 94°C, two minutes at 37°C, and 30 seconds at 72°C, followed by 35 cycles of  
230 30 seconds at 94°C, 30 seconds at 37°C, and 30 seconds at 72°C. and the final elongation step  
231 to have all amplicons with a double strand, at 72°C for six minutes.

232 The amplicons were detected by PCR enzyme-linked immunosorbent assay (ELISA),  
233 essentially as previously described [36]. In short, 5  $\mu$ l of each PCR product was bound to a  
234 streptavidin-coated ELISA plate, and the DNA strands denatured by treatment with alkali. The  
235 bound PCR fragments were then hybridized to a fluorescein-labeled *O. volvulus*-specific  
236 oligonucleotide probe (OVS2: 5'-AATCTCAAAAAACGGGTACATA-FL-3'), and the bound  
237 probe detected with an alkaline phosphatase labeled anti-fluorescein antibody (fragment FA;  
238 Roche Diagnostics). Bound antibody was detected using the ELISA amplification reagent  
239 (BluePhos) kit from KPL (Gaithersburg, USA) following the manufacturer's instructions.  
240 Color development was stopped by the addition of 100  $\mu$ l AP stop solution, and the plates read  
241 in an ELISA plate reader set at 630 nm. Samples were scored positive if their optical density  
242 exceeded either the mean plus three standard deviations of ten negative control wells run in  
243 parallel or 0.1, whichever was greater.

244

## 245 2.8. Data analysis

246

247 We calculated the confidence interval (95%) of annual biting rate (ABR), infectivity rate and  
248 annual transmission potential (ATP). Two-sample t-tests with unequal variances were used to  
249 compare the mean values of study parameters and the  $\chi^2$  or Fisher's exact tests were used to  
250 compare the proportions of parous females at Kimwenza site by months of capture. P <0.05  
251 was considered significant. The data were analyzed using Excel™ and SPSS 20™ Data  
252 Analysis Software.

## 253 3. Results

### 254 3.1. Vector Identification

255 All blackflies collected and examined belonged to the species *Simulium squamosum*.

### 256 3.2. Biting rates

257 **Table 1:** Number of blackflies collected and calculated biting rates (DBR, MBR and ABR) and  
258 percentage of parous and nulliparous females captured from August 2019 to July 2020 at the  
259 Kimwenza capture site in Mont Ngafula.

260

261

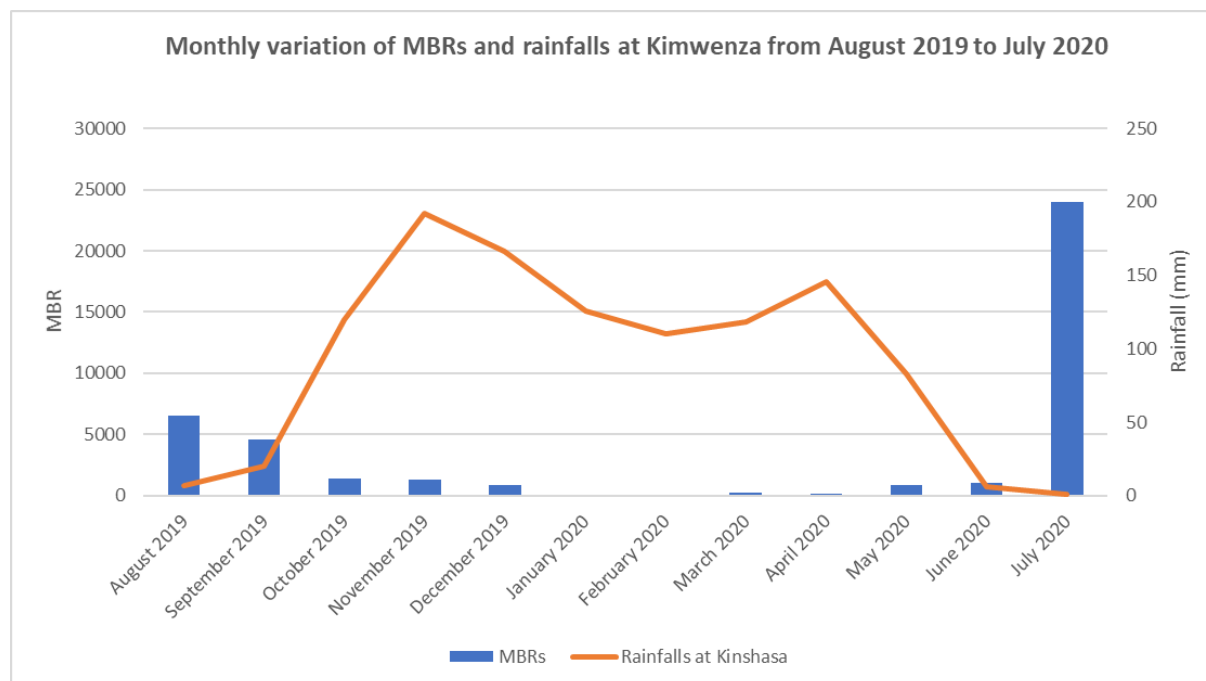
262

263

Parameters	2019					2020							TOTAL
	Aug	Sept	Oct	Nov	Dec	Jan	Feb	Mar	Apr	May	June	Jul	
No. of capture days	5	5	5	5	5	5	5	5	5	5	5	5	60
No. of females caught (standardized & non-standardized)	2,209	1,694	1,504	773	398	276	347	299	233	172	261	4,051	12,217
No. of females caught using standardized catching techniques (HLC) and dissected	1,072	847	712	223	144	138	21	26	36	25	142	3,875	7,261
No. of females caught using unstandardized catching techniques	1,137	847	792	550	254	138	326	273	197	147	119	176	4,956
Daily Biting rate (DBR)	214	169	142	45	29	28	4	5	7	5	28	775	1,452
Monthly Biting Rate (MBR)	3,323	2,541	2,207	669	446	428	61	81	108	78	426	12,013	22,380
No. of parous females	224	232	43	38	83	78	13	20	22	15	54	57	879
Parous females (%)	21	27	6.0	17	58	57	62	77	61	60	38	1.47	12
No. of nulliparous females	848	615	669	185	61	60	8	6	14	10	88	3,818	6,382
Nulliparous females (%)	79	73	94	83	42	43	38	23	39	40	62	99	88

264

265 A total of 12,217 black flies were captured during the study period, 22,380 Monthly variations  
 266 in blackfly biting rates were very high. An analysis of MBR variations in relation to rainfall  
 267 in the city of Kinshasa is presented in Figure 3.

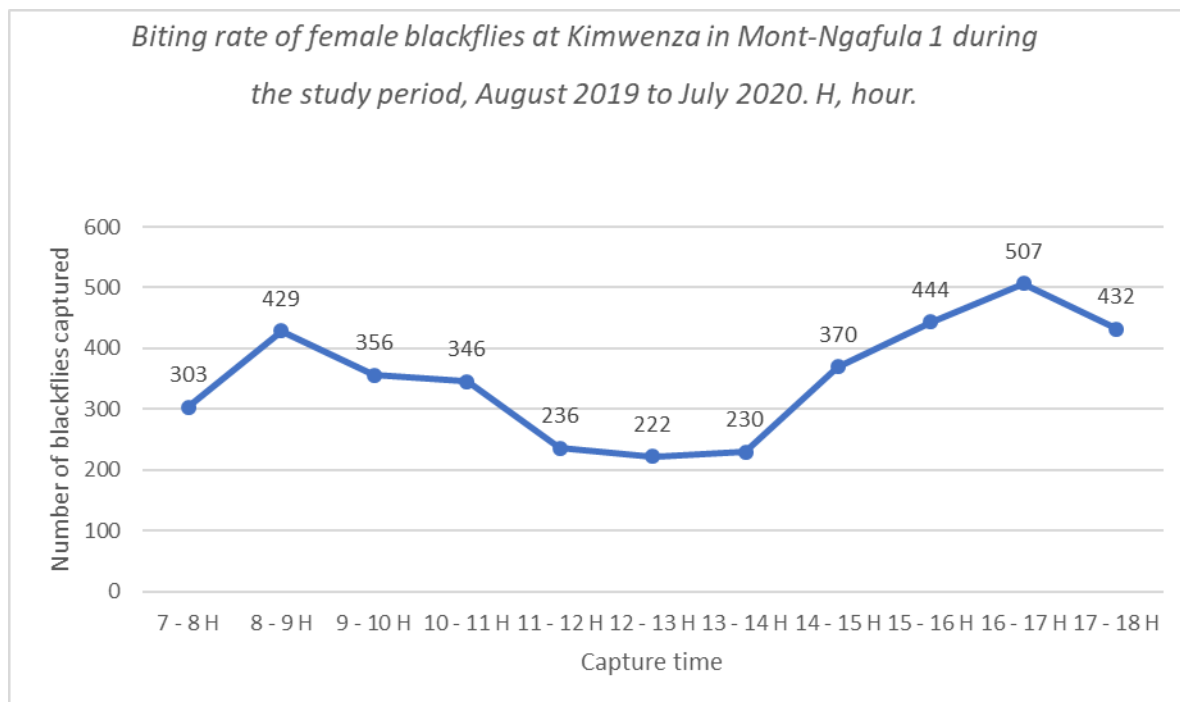


268

269 **Figure 3:** Monthly variation of Monthly Biting Rates (MBRs) and rainfalls at Kinshasa from  
 270 August 2019 to July 2020.

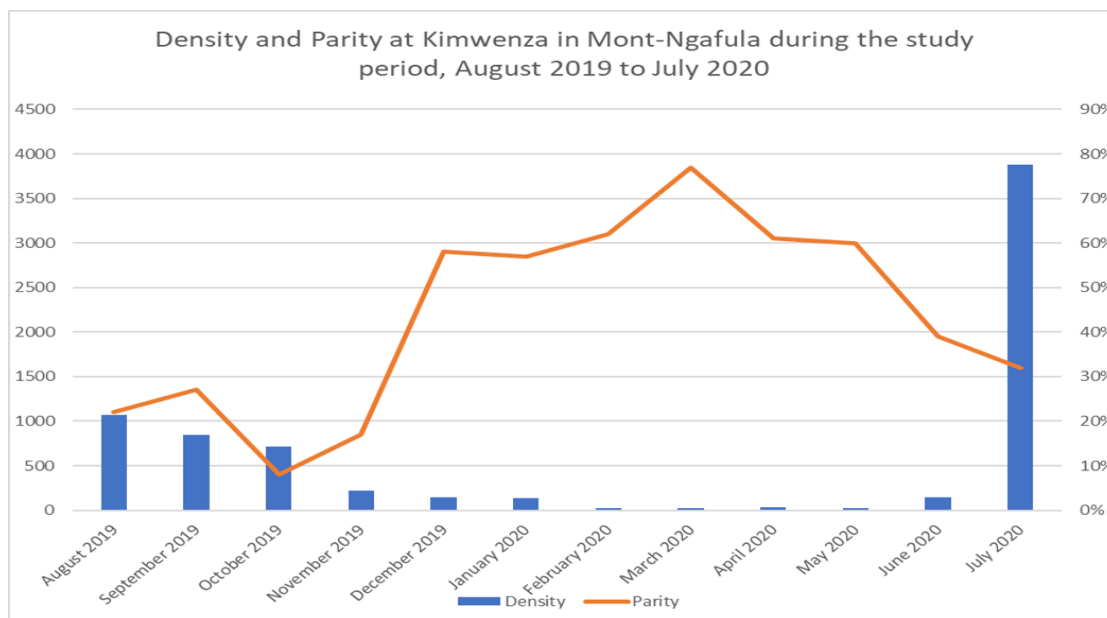


271 During the rainy season, which begins in October and continues until May of the following  
 272 year, blackfly productivity is very low. Identified supports were colonized by pre-imaginal  
 273 stages of blackflies.



274  
 275 **Figure 4:** *Biting rate of female blackflies at Kimwenza in Mont-Ngafula 1 during the study*  
 276 *period, from August 2019 to July 2020. H, hour.*

277 Two daily cycles of high biting were identified between 08:00 and 09:00 a.m. and 16:00 and  
 278 17:00. Low biting rates were observed between 11:00 a.m. and 13:00 (Figure 5).



279  
 280  
 281 **Figure 5:** *Variation of parous females at Kimwenza in Mont-Ngafula, from August 2019 to July*  
 282 *2020.*

283 The ratio of parous to nulliparous allows us to estimate the survival rate of simulum, which is  
284 directly related to the risk of disease transmission. Dissection of 7,261 female flies resulted in  
285 an estimated parous females' rate of 12% and nulliparous females' rate of 88%. (Figure 5). The  
286 highest parities were obtained in February 2020 (62%), in March 2020 (77%), in April 2020  
287 (61%) and in May 2020 (60%) (Figure 5).

### 288 3.3. Infectivity Rate and Annual Transmission Potential

289 The percentage of infected vectors, and the Annual Transmission Potential indices are  
290 presented in table 2. The blackfly infectivity rate is above the WHO recommended threshold  
291 of 0.05% (< 1/2000) in Kimwenza (P= 9.44%, 95% CI: 0.04 - 0.17). The upper bound of the  
292 95% confidence interval is above the recommended threshold meaning an ongoing  
293 transmission of *O. volvulus* infection. The calculated ATP was 21. Both the infectivity rate and  
294 ATP confirmed an ongoing transmission of *O. V* infection in Kimwenza.

295 **Tables 2:** Transmission indexes at Kimwenza in Mont-Ngafula during the study period, August  
296 2019 to July 2020.

Location	Infectivity rate (%)				Annual Transmission Potential (ATP)				
	Value (%)	Lower confidence interval (95%)	bond Upper confidence interval (95%)	bond Value	Lower confidence interval (95%)	bond Upper confidence interval (95%)	bond	Upper confidence interval (95%)	bond
Kimwenza	<b>0.09</b>	0.04	0.17	<b>21</b>	9	42			

297

### 298 3.4. Fixation supports of pre-imaginal forms in the capture sites

299 Different larval fixation supports were identified in the study area, from which pre-imaginal  
300 flies were collected: artificial waste (used cloths and plastic bags), aquatic plants  
301 (*Ledermanniella ledermannii*, *Tristicha trifaria*, *Pennisetum divisum*, *Phragmites mauritanus*,  
302 *Mimosa pigra*, *Cyperus distans*, *Ipomoea aquatica*, *Ludwigia adscendens*, *Echinochloa*  
303 *pyramidalis*, *Eichhornia crassipes*, and *Pistia stratiotes*), and plant remains (pieces of wood,  
304 tree branches, and palm leaves) wedged between rocks and trees.

305 These supports were found in abundance around the rapids of the Lukaya River especially in  
306 places frequented by humans from the surrounding areas. The pre-imaginal population was  
307 more prominent on *Ledermanniella ledermannii* (the main support)>artificial supports>plant  
308 remains.

## 309 4. Discussion

310 Morphological examination of the collected larvae and adult females revealed that they all  
311 belonged to the *S. squamosum* species of the *S. damnosum s.l.* complex. This was in alignment  
312 with results from previous surveys by Mansiangi (2012) [17] and Makenga (2015) [37] in  
313 Kinshasa, Henry *et al.* in 1984 in Kinsuka [11] and Hissette in Kinshasa in 1931 [38]. The  
314 pattern of MBR found in this study is in alignment with previous observations in Kinshasa [17,  
315 37] and Brazzaville [49]. However, the ABRs is very high, with levels that could maintain a  
316 high transmission rate if there is a reservoir of parasites that escape annual ivermectin

317 treatments. The threshold of 1000 bites/person/year by the *S. damnosum s.s./S. sirbanum* pair  
318 is the ABR value established by WHO below which there is no danger of human repopulation  
319 of onchocerciasis-free zones in the savannah zone of West Africa [50]. In 'forest'  
320 onchocerciasis regions where forest species of *S. damnosum s.l.* including *S. squamosum* are  
321 present, the tolerable thresholds of the ABR are far above the maximum values established in  
322 savanna zones. Considering the pattern of biting rates over the study period, it's obvious that  
323 the good period for ivermectin mass campaigns should be between May to August. One would  
324 recommend organizing ivermectin mass campaigns during the high transmission season which  
325 in this case is between July and August of each year. This study showed blackfly infectivity  
326 rate (Upper bound of the 95% CI above 0.05%) and ATP (ATP =21) indices above the WHO  
327 recommended thresholds for the elimination of onchocerciasis [51].

328 In this study, estimates were calculated assuming an average of one L3 per infective fly. With  
329 this level of transmission, there is likely to be more than one L3 per fly, meaning that the ATP  
330 estimates are going to be too low. The assumption of one L3 per fly comes from OEPA's  
331 experience of Demanou *et al.* 2003; Amuzu *et al.* 2010; Basáñez MG *et al.* 2009 and Duke *et al.*  
332 1964 [44 - 47] but *S. damnosum* is a more efficient vector than is *Simulium metallicum*, *S.*  
333 *callidum*, and *S. ochraceum* found in the Americas. Also, in areas with good mass drug  
334 administration coverage, it can be hypothesized that most of the transmission will come from  
335 people that do not swallow ivermectin known as systematic non-compliers which constitute a  
336 reservoir of infection to systematic compliers. In these people, skin mf levels will be  
337 unchanged, and the number of L3 developing in a fly that gets a blood meal from the non-  
338 compliers is not going to differ from pre-control. Thus, in the perspective of elimination, if we  
339 cannot effectively reduce the densities of blackflies to break the chain of transmission, as was  
340 the case with vector control at onchocerciasis control program (OCP) in West Africa, it is even  
341 more opportune to choose the period of the MDA so as to keep microfilarodermia levels as low  
342 as possible, and prevent the dissemination of the parasite notwithstanding high biting rates.

343 This study shows a diurnal fly bite cycle with two peaks, the minor one between 08:00 and  
344 09:00 and the major peak between 16:00 and 17:00 (Figure 5). Our results confirm the  
345 conclusions of Henry *et al.* (1984) who observed the same two peaks in the Kinsuka [11].  
346 Mansiangi *et al.* also observed two peaks at Kinsuka: a major one between 16:00 and 17:00  
347 and minor one between 09:00 and 10:00 [17]. Makenga *et al.* also observed two peaks: a major  
348 peak in the morning and minor peak around 17:00 [37]. This difference may have resulted from  
349 an increased fly activity when people were concentrated around the breeding sites, namely in  
350 the morning and at sunset, as in our case. Our results corroborate with those of Nascimento-  
351 Carvalho in Brazil or Homoxi, where the biting activity of female Simuliidae showed a bimodal  
352 pattern, with peaks in early morning (between 07:00 and 08:50.) and afternoon (between 16:00  
353 and 17:50) [52]. In Thirei, the biting activity was evenly distributed throughout the day [53].  
354 Black flies were captured simultaneously in Homoxi and Thirei using systematic methods to  
355 compare the traditional capture method using human bait (Human Landing Catch, HLC) with  
356 HLC protected by MosqTent® [52]. Comparing the anthropophilic profiles of black flies  
357 captured using MosqTent® and HLC, the percentage of species caught fluctuated seasonally  
358 in both Homoxi and Thirei, except between 11:00 and 11:50. in Homoxi and between 16:00  
359 and 16:50. in Thirei, where the difference was based on the method of capture [52].

360 This study identified a diversity of larval breeding supports, such as waste, aquatic plants, and  
361 marine rocks, in and along the Lukaya rivers. Similar supports have been reported by Henry *et*

362 al. (1984) [11], Mansiangi et al. (2014) [17], and Makenga et al. (2015) [37]. Considering the  
363 supports identified, this study confirms the breeding of *S. damnosum*; the flies lay their eggs in  
364 the river rapids, where the larvae hatch and develop into adults within eight to twelve days  
365 [54]. The pre-imaginal forms (eggs, larvae, and nymphs) are all aquatic and strongly rheophilic  
366 [54]. After hatching, the young larvae either remain attached to aquatic supports or drift with  
367 the current [54]. They feed with their rigid mandibular soles, which they use to randomly catch  
368 particles suspended in running water, including the nutrients they need [54].

## 369 **5. Conclusion**

370 This study showed high biting and transmission rates in the study site. These findings  
371 confirmed an ongoing transmission of *O.V* infection despite two decades of interrupted annual  
372 ivermectin mass distribution using CDTI strategy. To accelerate the interruption of the  
373 transmission of onchocerciasis and meet the 2030 WHO road map targets, there is an urgent  
374 need for the National Onchocerciasis Control Program stopping doing business as usual and  
375 change treatment strategies. Firstly, organizing ivermectin mass campaigns between June and  
376 July to be able to keep the microfilarodermia rate very low before the high transmission season.  
377 Secondly, the program should move from annual to biannual ivermectin mass distribution in  
378 the study area. Thirdly, the onchocerciasis program should couple Ivermectin mass  
379 distribution with slash and clear strategy to reduce both biting rate and nuisance and therefore  
380 accelerate the interruption of transmission.

## 381 **6. List of abbreviations**

382 ABR, annual biting rate;

383 APOC, African Programme for Onchocerciasis Control;

384 ATP, annual transmission potential;

385 CDTI, Community Directed Treatment with Ivermectin;

386 DBR, daily biting rate;

387 DRC, Democratic Republic of Congo;

388 DTT, dichlorodiphenyltrichloroethane;

389 ESPEN, Expanded Special Project for Elimination of Neglected Tropical Diseases;

390 ESPK, Ecole de Santé Publique de Kinshasa

391 HLC, Human Landing Catch ;

392 ISTM, Institut Supérieur des Techniques Médicales ;

393 MBR, monthly biting rate;

394 MDA, mass drug administration;

395 MTP, monthly transmission potential;

396 NPOC, National Program for Onchocerciasis Control;

397 NS, Non-significant;

398 NTDs, neglected tropical diseases;  
399 PNLMTN-CP, National Programme for Neglected Tropical Diseases Control;  
400 REMO, Rapid Epidemiological Mapping of Onchocerciasis;  
401 SD, Standard deviation;  
402 ULB Université Libre de Bruxelles ;  
403 UNIKIN, Université de Kinshasa;  
404 WHO, World Health Organization;

#### 405 **6.1. Acknowledgments**

406 The authors of this study sincerely thank the Ministry of Health of the DRC, the political and  
407 administrative leaders of Kinshasa, the authorities of the health zone of Mont-Ngafula I and  
408 Gombe, and all the participants who made this study possible.

#### 409 **6.2. Funding Statement**

410 No funding sources.

#### 411 **6.3. Data Availability**

412 The authors confirm that all data underlying the findings are fully available without restriction.  
413 All relevant data are within the paper and its Supporting Information files.

#### 414 **6.4. Competing interests**

415 The authors declare that they have no competing interests.

#### 416 **6.5. Authors' contributions**

417 MBJC is the main author: he designed the study, participated to data collection and analysis.  
418 MBJC, MP, ZJ and YC participated to the writing of the manuscript, data analysis and marking  
419 of the final version. IF took part to data analysis and marking of the final version. DB, AA,  
420 SMS reviewed the manuscript. AA and SMS run the O-150 PCR. YC participated to the writing  
421 of the manuscript, methodology and read-through. All authors were involved in the preparation  
422 of the manuscript, edition and finalization of the version to be published and agreed to be  
423 accountable for all aspects related to the integrity of the work.

#### 424 **7. Bibliographical references**

- 425 1. **World Health Organization (WHO).** (2022) Onchocerciasis Key fact of January 11,  
426 2022. <https://www.who.int/news-room/fact-sheets/detail/onchocerciasis>, accessed on  
427 July 24, 2022.
- 428 2. **World Health Organization (WHO).** (2020) Ending the neglect to attain the  
429 Sustainable Development Goals: a road map for neglected tropical diseases 2021–2030.  
430 Geneva: World Health Organization; 2020. Licence: CC BY-NC-SA 3.0 IGO.
- 431 3. **World Health Organization (WHO).** (2020) Elimination of human onchocerciasis:  
432 progress report, 2019–2020. *Wkly. Epid. Rec.* No 45, 2020, 95, 545–556. WHO  
433 Licence: CC BY-NC-SA 3.0 IGO.

- 434 4. **Makenga Bof JC, Maketa V, Bakajika DK, Ntumba F, Mpunga D, Murdoch ME,**  
435 **Hopkins A, Noma MM, Zouré H, Tekle AH, Katararwa MN, Lutumba P.**  
436 Onchocerciasis control in the Democratic Republic of Congo (DRC): challenges in a  
437 post-war environment. (2015) *Trop Med Int Health* 2015;20(1):48–62. DOI:  
438 10.1111/tmi.12397.
- 439 5. **Wanson M.** Contribution à l'étude de l'Onchocercose africaine humaine (1950)  
440 (Problèmes de prophylaxie à Léopoldville.). Extrait des Annales de la Société Belge de  
441 Médecine tropicale, 1950 ; Volume 30 (4) 1- 197. Ad goemaere. Éditeur, imprimeur  
442 du ROI. 21. Rue de la Limite, Bruxelles 1950. Text in French : *Ann. de la Soc. Belge*  
443 *de Med. Trop.* 1950 ; Vol. XXX, No. 4 : 667-863.
- 444 6. **Wanson M, Courtois L.R et Lebied B.** L'éradication du *Simulium damnosum*  
445 (Theobald) à Léopoldville. (1949) *Ann. Soc. Belge Méd. Trop.* 1949 ; 29 :373–403.
- 446 7. **Fain A et Hallot R.** Répartition d'*Onchocerca volvulus* Leuckart et de ses vecteurs  
447 dans le bassin du Congo et les régions limitrophes. (1965) Académie Royale des  
448 Sciences d'Outre-Mer. *Classe des Sciences naturelles et médicales* - N.S. - XVII-1 -  
449 Bruxelles 1965, p 1–93.
- 450 8. **Makenga Bof JC, Ntumba Tshitoka F, Muteba D, Mansiangi P, Coppieters Y.**  
451 Review of the national Program for Onchocerciasis Control in the Democratic Republic  
452 of the Congo. (2019) *Trop Med Infect Dis* 2019;4(2):92. DOI:  
453 10.3390/tropicalmed4020092.
- 454 9. **Dimomfu BL, Lubeji DK, Noma M, Sékétéli A, Boussinesq M.** African Programme  
455 for Onchocerciasis Control. African Programme for Onchocerciasis Control (APOC):  
456 sociological study in three foci of central Africa before the implementation of  
457 treatments with ivermectin (Mectizan). (2007) *Trans R Soc Trop Med Hyg.* 2007  
458 Jul;101(7):674-9. doi: 10.1016/j.trstmh.2007.03.007. Epub 2007 Apr 11. PMID:  
459 17433391.
- 460 10. **Brown AWA.** A Survey of *Simulium* control in Africa! (1962) *Bull.Wld Hlth Org.*  
461 1962;27:511–27.
- 462 11. **Henry MC, Janssens PG, De Boeck M.** Observations récentes sur la transmission de  
463 l'onchocercose à Kinsuka, Kinshasa, Zaïre. (1984) *Ann Soc Belg Med Trop* 1984;  
464 64:267–81.
- 465 12. **Ministère de la Santé. Publique, Secrétariat Général, RDC.** Plan Stratégique de  
466 Lutte contre les Maladies Tropicales Négligées à Chimiothérapie Préventive 2016–  
467 2020. Ministère de la Santé Publique. Secrétariat Général, RDC, Kinshasa ; 2016.  
468 Programme National de Lutte contre les Maladies Tropicales Négligées ; pp, p. 1–179.  
469 [https://espen.afro.who.int/system/files/content/resources/DRC\\_NTD\\_Master\\_Plan\\_20](https://espen.afro.who.int/system/files/content/resources/DRC_NTD_Master_Plan_2016_2020.pdf)  
470 [16\\_2020.pdf](https://espen.afro.who.int/system/files/content/resources/DRC_NTD_Master_Plan_2016_2020.pdf), accessed on 23 august 2022.
- 471 13. **De Saint Moulin L, Kalombo JL.** Atlas de l'organisation administrative de la  
472 République Démocratique du Congo (Fonds de plan de l'Institut Géographique du  
473 Congo), Kinshasa : centre d'études pour l'action sociale. (2020) *Cartogr adaptée*  
474 *Minist S RDC* 2005 ;2020, P. 15.
- 475 14. **National Program for Onchocerciasis Control (NPOC).** Annual Technical Reports  
476 to the Technical Advisory Committee. (TAC) of APOC. National Program for  
477 Onchocerciasis Control (NPOC), Kinshasa, DRC; 2002–2016.

- 478 15. **Enyong P, Traoré S, Demanou M, Esum M, Fobi G, Noma M, Kayembé D, Sékétéli**  
479 **A.** Programme africain de lutte contre l'onchocercose (APOC) : intensité de la  
480 transmission d'*Onchocerca volvulus* par *Simulium squamosum* dans deux régions de la  
481 République du Cameroun. (2006) *Bull Soc Pathol Exot* 2006 ;99(4):272–7.
- 482 16. **Walsh JF, Davies JB, Le Berre R, Grams R.** Standardization of criteria for assessing  
483 the effect of Simulium control in onchocerciasis control programmes. (1978) *Trans R*  
484 *Soc Trop Med Hyg* 1978;72(6):675–6. DOI: 10.1016/0035-9203(78)90039-1.
- 485 17. **Mansiangi PM, Palata JC, Loka AW, Kiyombo GM, Josens G.** Onchocerciasis  
486 transmission by *Simulium squamosum* (Diptera: Simuliidae) in the urban focus of  
487 Kinsuka and D.C. Kinshasa. (2012) *Ann Afr Med.* 2012;5(4):1141–52.
- 488 18. **Karim S.** Surveillance de l'onchocercose par la technique de pools screening  
489 [Dissertation]. Université de Ouagadougou, Burkina Faso; 2013, p. 1–67. (Available  
490 from: [http://www.labiogene.org/IMG/pdf/master2\\_sanon\\_karim.pdf](http://www.labiogene.org/IMG/pdf/master2_sanon_karim.pdf); consulted first  
491 august 2020).
- 492 19. **Crosskey RW.** Black flies (Simuliidae). In: Lane RP, Crosskey RW, editors. Medical  
493 Insects and Arachnids. Chapman & Hall, London; 1993, p. 723.
- 494 20. **DUKE B.O.L.** 1968. Studies on factors influencing the transmission of onchocerciasis.  
495 IV. The biting cycles, infective biting density and transmission potential of "forest  
496 *Simulium damnosum*". (1968) *Annals of Tropical Medicine and Parasitology.* 1968 ;  
497 62, 95-106.
- 498 21. **Agoua H, Alley ES, Hougard JM, Akpoboua KLB, Boatin B, Sékétéli A.** Etudes  
499 entomologiques de post-traitement dans le programme de lutte contre l'onchocercose  
500 en Afrique de l'Ouest. (1995) *Parasite.* 1995 ;2 :281–8.  
501 doi.org/10.1051/parasite/1995023281.
- 502 22. **Maria-Gloria Basanez, Richard C. Collins, Charles H. Porter, Mark P. Little, And**  
503 **David Brandling-Bennett.** (2002) Transmission intensity and the patterns of  
504 onchocerca volvulus infection in human communities. *Am. J. Trop. Med. Hyg.* 2002;  
505 67(6), pp. 669–679.
- 506 23. **Katholi CR, Toe L, Merriweather A, Unnasch TR.** Determining the prevalence of  
507 *Onchocerca volvulus* infection in vector populations by polymerase chain reaction  
508 screening of pools of black flies. (1995) *J Infect Dis.* 1995; 172:1414–7.
- 509 24. **Unnasch TR, Meredith SE.** The use of degenerate primers in conjunction with strain  
510 and species oligonucleotides to classify *Onchocerca volvulus*. (1996) *Methods Mol*  
511 *Biol.* 1996; 50:293–303.
- 512 25. **Yameogo L, Toe L, Hougard JM, Boatin BA, Unnasch TR.** Pool screen polymerase  
513 chain reaction for estimating the prevalence of *Onchocerca volvulus* infection in  
514 *Simulium damnosum* sensu lato: results of a field trial in an area subject to successful  
515 vector control. (1999) *Am J Trop Med Hyg.* 1999; 60(1):124-8.
- 516 26. **Rodriguez-Perez MA, Dominguez-Vazquez A, Unnasch TR, Hassan HK,**  
517 **Arredondo-Jimenez JI, et al.** Interruption of Transmission of *Onchocerca volvulus* in  
518 the Southern Chiapas Focus, Mexico. (2013) *PLoS Negl Trop Dis.* 2013; 7(3): e2133.  
519 doi: 10.1371/journal.pntd.0002133.
- 520 27. **World Health Organization (WHO).** Guidelines for stopping mass drug  
521 administration and verifying elimination of human onchocerciasis: criteria and

- 522 procedures. Geneva: World Health Organization 2016. Document number:  
523 WHO/HTM/NTD/PCT/2016.4. <https://apps.who.int/iris/handle/10665/204180>.  
524 [Accessed 30 July 2022](https://doi.org/10.1101/2023.05.10.23289767), accessed on 23 august 2022.
- 525 28. **Wilson W.R., Tuan R.S., Kenneth J.S., Freedman D.O., Green B.M., Kwablah A.**  
526 **Unnasch T.R.** 1994. The Onchocerca volvulus homologue of the multifunctional  
527 polypeptide protein disulfide isomerase. (1994) *Molecular and Biochemical*  
528 *Parasitology*.1994; 68:103-117.
- 529 29. **Gopal H, Hassan HK, Rodriguez-Perez MA, Toe' LD, Lustigman S, et al. (2012).**  
530 Oligonucleotide Based Magnetic Bead Capture of Onchocerca volvulus DNA for PCR  
531 Pool Screening of Vector Black Flies. (2012) *PLoS Negl Trop Dis*. 2012; 6(6): e1712.  
532 doi: 10.1371/journal.pntd.0001712.
- 533 30. **Unnasch T.R., A Williams S.A.** The genomes of Onchocerca volvulus. (2000) *Int J*  
534 *Parasitol*. 2000; 10;30(4):543-52. doi: 10.1016/s0020-7519(99)00184-8.
- 535 31. **Keddie E. M., Higazi T., Boakye D., Merriweather A., Wooten M. C., Unnasch T.**  
536 **R.** *Onchocerca volvulus*: limited heterogeneity in the nuclear and mitochondrial  
537 genomes. (1999) *Exp Parasitol*. 1999; 93(4):198-206. doi: 10.1006/expr.1999.4450.
- 538 32. **Rodriguez-Perez MA, Lizarazo-Ortega C, Hassan HK, Dominguez-Vasquez A,**  
539 **Mendez-Galvan J, Lugo-Moreno P, et al.** Evidence for suppression of *Onchocerca*  
540 *volvulus* transmission in the Oaxaca focus in Mexico. (2008) *Am J Trop Med Hyg*.  
541 2008; 78: 147–52. PMID: 18187798
- 542 33. **Rodriguez-Perez MA, Lutzow-Steiner MA, Segura-Cabrera A, Lizarazo-Ortega**  
543 **C, Dominguez-Vazquez A, Sauerbrey M, et al.** Rapid suppression of Onchocerca  
544 *volvulus* transmission in two communities of the Southern Chiapas focus, Mexico,  
545 achieved by quarterly treatments with Mectizan. (2008) *Am J Trop Med Hyg*. 2008; 79:  
546 239–44. PMID: 18689630.
- 547 34. **Rodríguez-Pérez MA, Lilley BG, Domínguez-Vázquez A, Segura-Arenas R,**  
548 **Lizarazo-Ortega C, Mendoza-Herrera A, et al.** Polymerase chain reaction  
549 monitoring of transmission of Onchocerca volvulus in two endemic states in Mexico.  
550 (2004) *Am J Trop Med Hyg*. 2004; 70: 38–45. PMID: 14971696
- 551 35. **Rodríguez-Pérez MA, Fernández-Santos NA, Orozco-Algarra ME, Rodríguez-**  
552 **Atanacio JA, Domínguez-Vázquez A, Rodríguez-Morales KB, et al.** Elimination of  
553 Onchocerciasis from Mexico. (2015) *PLoS Negl Trop Dis*. 2015; 9(7): e0003922.  
554 doi:10.1371/journal.pntd.0003922
- 555 36. **Fernandez-Santos NA, Unnasch TR, Rodriguez-Luna IC, Prado-Velasco FG,**  
556 **Adeniran AA, Martinez-Montoya H, Rodriguez-Perez MA.** Postelimination  
557 surveillance in formerly onchocerciasis endemic focus in Southern Mexico. (2020)  
558 *PLoS Negl Trop Dis*. 2020 ; 14(1) : e0008008. [https://doi.org/10.1371/ journal.pntd.0008008](https://doi.org/10.1371/journal.pntd.0008008).
- 559  
560 37. **Makenga Bof JC, Mpunga Mukendi D, Molala Bondoko R, Ilunga-Ilunga F,**  
561 **Coppieters Y.** Analysis of the transmission level of onchocerciasis in a health area in  
562 Kinshasa, Democratic Republic of the Congo (DRC). (2017) *J Entomol Zool Stud* 2017  
563 ;5(4):537–45.
- 564 38. **Maertens, K.** Onchocerciasis in Zaïre. (1990) *Int Ophthalmol*. 1990; 14: 181–188.  
565 <https://doi.org/10.1007/BF00158316>.



- 566 39. **Hougard FM, Poudiougou P, Zerbo G, Meyer R, Guillet P, Agoua H, Seketeli A,**  
567 **Akpoboua A, Sowah S, Samba EM, Quillévéré D.** [The control of onchocerciasis  
568 vectors in West Africa: description of a logistic adapted to a largescale public health  
569 programme] ([In French: la lutte contre les vecteurs de l'onchocercose en Afrique de  
570 l'ouest: description d'une logistique adaptée à un programme de santé publique de  
571 grande envergure] (1994) *Cahiers Santé* 1994;4:389–98.
- 572 40. **Philippon B.** Etude de la transmission d'*Onchocerca volvulus* (Leuckart, 1893)  
573 (Nematoda, Onchocercidae) par *Simulium damnosum* Theobald, 1903 (Diptera,  
574 Simuliidae) en Afrique tropicale. Travaux et Documents de l'O.R.S.T.O.M. n° 63.  
575 Paris: Office de la Recherche Scientifique et Technique d'Outre-Mer. ORSTOM,  
576 France Ans; 1977. Google Scholar.
- 577 41. **Philippon B, Bain O.** Transmission de l'onchocercose humaine en zone de savane  
578 d'Afrique Occidentale, passage des microfilaries d'*Onchocerca volvulus* Leuck. Dans  
579 l'hémocèle de la femelle de *Simulium damnosum* Th. Cah O.R.S.T.O.M. (1972) *ser*  
580 *Entomol Med Parasitol* 1972;10:251–61. Google Scholar.
- 581 42. **Basáñez MG, Remme JH, Alley ES, Bain O, Shelley AJ, Medley GF, Anderson**  
582 **RM.** Density-dependent processes in the transmission of human onchocerciasis:  
583 relationship between the numbers of microfilariae ingested and successful larval  
584 development in the simuliid vector. *Parasitology* 1995 ;110(4) :409–27. DOI :  
585 10.1017/s0031182000064751.
- 586 43. **Basáñez MG, Townson H, Williams JR, Frontado H, Villamizar NJ, Anderson**  
587 **RM.** Density-dependent processes in the transmission of human onchocerciasis:  
588 relationship between microfilarial intake and mortality of the simuliid vector. (1996)  
589 *Parasitology* 1996 ;113(4) :331–55. DOI : 10.1017/s003118200006649x.
- 590 44. **Demanou M, Enyong P, Pion SD, Basáñez MG, Boussinesq M.** Experimental studies  
591 on the transmission of *Onchocerca volvulus* by its vector in the sanaga valley  
592 (Cameroon): *Simulium squamosum* B. Intake of microfilariae and their migration to the  
593 haemocoel of the vector. (2003) *Ann Trop Med Parasitol.* 2003;97(4):381–402. DOI:  
594 10.1179/000349803235002254.
- 595 45. **Amuzu H, Wilson MD, Boakye DA.** Studies of *Anopheles gambiae s.l.* (Diptera:  
596 Culicidae) exhibiting different vectorial capacities in lymphatic filariasis transmission  
597 in the Gomoa district, Ghana. (2010) *Parasit Vectors* 2010; 3:85. DOI: 10.1186/1756-  
598 3305-3-85.
- 599 46. **Basáñez MG, Churcher TS, Grillet ME.** *Onchocerca-Simulium* interactions and the  
600 population and evolutionary biology of *Onchocerca volvulus*. (2009) *Adv Parasitol*  
601 2009; 68:263–313. DOI: 10.1016/S0065-308X(08)00611-8.
- 602 47. **Duke BL, J LD.** Studies on factors influencing the transmission of onchocerciasis. III:  
603 Observations on the effect of the peritrophic membrane in limiting the development of  
604 *Onchocerca volvulus* in *Simulium damnosum*. (1964) *Ann Trop Med Parasitol*  
605 1964;58(1):83–8.
- 606 48. **Laurence BR.** Intake and migration of the microfilariae of *Onchocerca volvulus*  
607 Leuckart in *Simulium damnosum* Theobald. (1966) *J Helminthol* 1966;40(3):337–42.  
608 DOI: 10.1017/s0022149x00020976.

- 609 49. Lapy Mathan Sabine Esther, Lenga Arsène, Bitsindou Patrick and Missamou François.  
610 Evaluation of some parameters involved in onchocerciasis transmission in the DJOUE  
611 fireplace in Brazzaville. (2022) *Journal of Entomology and Zoology Studies*. 2022;  
612 10(1): 55-62. DOI: <https://doi.org/10.22271/j.ento.2022.v10.i1a.8924>.
- 613 50. **World Health Organisation (WHO)**. 1977. The biomedical criteria for resettlement  
614 in the Volta River Basin Onchocerciasis Control Programme area (OCP): report of a  
615 scientific advisory panel working group, Geneva, 6-8 June 1977. OCP/SAP/77.1.  
616 <https://apps.who.int/iris/handle/10665/312295> , accessed on 23 august 2022.
- 617 51. **World Health Organization (WHO)**. 2016. Guidelines for stopping mass drug  
618 administration and verifying elimination of human onchocerciasis: criteria and  
619 procedures. Geneva: World Health Organization. Document number:  
620 WHO/HTM/NTD/PCT/2016.4.
- 621 52. **Nascimento-Carvalho ÉSD, Cesário RA, do Vale VF, Aranda AT, Valente ACDS,**  
622 **Maia-Herzog M**. A new methodology for sampling black flies for the entomological  
623 surveillance of onchocerciasis in Brazil. (2017) *PLOS ONE* 2017;12(7): e0179754.  
624 DOI: 10.1371/journal.pone.0179754.
- 625 53. **Otabil KB, Gyasi SF, Awuah E, Obeng-Ofori D, Tenkorang SB, Kessie JA,**  
626 **Schallig HDFH**. Biting rates and relative abundance of Simulium flies under different  
627 climatic conditions in an onchocerciasis endemic community in Ghana. (2020) *Parasit*  
628 *Vectors*. 2020 May 6;13(1):229. doi: 10.1186/s13071-020-04102-5. PMID: 32375902;  
629 PMCID: PMC7204027.
- 630 54. **Laurent Y. Levêque Christian et Hougard Jean-Marc**. Trente ans de lutte contre  
631 l'onchocercose en Afrique de l'ouest. Traitements larvicides et protection de  
632 l'environnement. Thirty Years de Onchocerciasis Control in West Africa. Black Fly  
633 Larviciding and Environmental Protection. IRD, Marseille Éditions, 2003, p 12–64.