

# 1 Investigating the Relationship Between Radiotherapy Dose 2 on the neurogenic niches and Overall Survival in NSCLC 3 Brain Metastases

4 *Fia Cialdella MD<sup>1,2</sup>, Danique E. Bruil BSc., A.T.J. van der Boog MD MSc<sup>1</sup>, Steven H.J. Nagtegaal MD  
5 PhD<sup>1,3</sup>, F.Y.F. de Vos MD PhD<sup>2</sup>, J.J.C. Verhoeff MD PhD<sup>1</sup>, Szabolcs David PhD*

6 1. Department of Radiation Oncology, University Medical Center Utrecht, Utrecht, The Netherlands

7 2. Department of Medical Oncology, University Medical Center Utrecht, Utrecht, The Netherlands

8 3. Department of Radiation Oncology, Erasmus Medical Center, Rotterdam, The Netherlands

9

## 10 Summary

11 **Background** Non-small cell lung cancer (NSCLC), the most common type of lung cancer, often leads to  
12 brain metastases (BMs) with a poor prognosis. Radiotherapy is the main treatment for BMs, which  
13 despite decades of development, still results in radiation of healthy tissue. Neural stem cells (NSCs),  
14 crucial for the establishment and preservation of the nervous system, are sensitive to radiation,  
15 therefore radiation damage to NSCs may affect overall survival (OS). NSCs are primarily located in the  
16 subventricular zone (SVZ) and the subgranular zone (SGZ) within the hippocampus (HPC). Our study  
17 aims to evaluate the impact of radiotherapy dose on NSCs on OS in patients with BMs from NSCLC.

18 **Methods** We have retrospectively included 138 NSCLC patients with BMs, irradiated at a single  
19 academic institute. NSC regions were delineated on the non-enhanced T1 MR images with CAT12 and  
20 SPM. The association between regional mean doses in the SVZ and HPC and OS was examined using a  
21 Cox regression model. Additionally, survival differences between lesion contact and no direct contact  
22 with SVZ and HPC were investigated with Kaplan-Meier (KM) analysis.

23 **Findings** Multivariable Cox regression of dose on the SVZ and HPC showed a significant negative  
24 correlation, with a hazard ratio (HR) of 1.366 (p = 0.041 [95% (CI) 1.013– 1.842]) and 1.194 (p = 0.037  
25 [95% CI 1.010 – 1.411]), respectively. KM analysis did not find a relationship between lesion contact  
26 with NSC-regions and OS.

27

**NOTE: This preprint reports new research that has not been certified by peer review and should not be used to guide clinical practice.**

28 **Interpretation** Radiotherapy dose on the neurogenic niches is correlated with poorer OS and we found  
29 no association between direct lesion contact to NSC-regions and OS. We recommend further  
30 investigation into the impact of radiation on OS and neurocognitive function in a prospective study  
31 design in order to develop treatment approaches that minimize the potential harm to NSC's while  
32 maximizing effectiveness.

33 **Funding** Received no funds, grants, or support.

34 **Keywords** Brain metastases (BMs), Non-small cell lung cancer, radiotherapy, irradiation, neurogenic  
35 niches, neural stem cells (NSCs), subventricular zone (SVZ); hippocampus (HPC), subgranular zone  
36 (SGZ)

## 37 **BACKGROUND**

### 38 **Lung cancer and brain metastases**

39 The majority of patients with lung cancer are diagnosed with Non-Small Cell Lung Cancer (NSCLC), of  
40 which Lung Adenocarcinoma (LUAD ~50%) and Lung Squamous Cell Carcinoma (LUSC ~40%) are the  
41 most common types.<sup>1</sup> A frequent complication of NSCLC is the development of brain metastases  
42 (BMs). The incidence has increased recent years due to more sensitive detection methods for BMs,  
43 longer life expectancy of cancer patients due to improved systemic therapy against the primary tumor,  
44 and because of an ageing population being more prone to developing cancers.<sup>2</sup> The exact prevalence  
45 of BMs in NSCLC is unknown, with studies reporting a risk rate of 10% to 36% to develop BMs during  
46 the disease course.<sup>3-6</sup> Overall survival (OS) of these patients varies from median 2 to 9 months  
47 depending on type of treatment.<sup>7,8</sup> BMs are treated by either local radiotherapy (RT) or a combined  
48 treatment of surgical resection and subsequent RT. The aim of local therapy is to improve OS and to  
49 alleviate symptomatic progression of the BMs.<sup>9</sup> The preferred type of radiotherapy is stereotactic  
50 radiosurgery (SRS), in which targeted radiation is delivered with high precision to the BMs - usually in  
51 a large, single fraction - to improve local tumor control. The prescribed SRS dose is calculated by the  
52 volume or axial size of the BMs based-on contrast enhanced T1-weighted MR imaging, while keeping  
53 the presumed risk of radiation damage to the surrounding tissue in mind.<sup>10</sup> Whole-brain radiotherapy  
54 (WBRT) is also used to treat multiple BMs (e.g. more than 10), as prophylactic treatment of  
55 microscopic BMs in Small Cell Lung Cancer or as symptomatic treatment in terminal stage of the  
56 disease.<sup>11</sup> However, due to this risk of toxicity, SRS is preferred over WBRT.<sup>12</sup>

57 Previous studies on general cranial radiotherapy (RT) indicate that RT can damage healthy brain tissue,  
58 leading to atrophy or damage that may subsequently result in cognitive impairment or other  
59 neurological disorders.<sup>13,14</sup>

60 Radiation therapy that irradiates neural stem cells (NSCs) can potentially have a negative impact on  
61 both OS and Quality of Life (QoL) due to the presumed effects on the repair of radiation-induced  
62 damage to the brain.<sup>15</sup>

### 63 **Neurogenic niches in adults**

64 NSCs are located in the so called *neurogenic niches*, which involve two separate regions in the adult  
65 brain: (1) the subventricular zone (SVZ), situated underneath the ependymal layer of cells that line the  
66 ventricles and (2) the subgranular zone (SGZ), part of the hippocampal dentate gyrus.<sup>16</sup> NSCs induce  
67 neurogenesis, which is the process of generating new neurons from NSCs. This process allows cell  
68 replacement after neuron loss triggered by brain injury (e.g. due to tumor growth, surgery or  
69 radiotherapy).<sup>17</sup> Additionally, adult NSCs, particularly in the hippocampus (HPC) also play a role in the  
70 regulation of several cognitive processes.<sup>18</sup> Irradiation of the neurogenic niches is hypothesized to  
71 play a role in reducing adult neurogenesis in two ways: inducing acute apoptosis in dividing cells and  
72 reducing the production of new neurons by decreasing the pool of mitotic NSCs.<sup>19</sup>

73 A recent study by our group examined the relationship between tumor contact and irradiation of the  
74 neurogenic niches<sup>20</sup> in glioma patients, where we showed that a tumor which invades the SVZ region  
75 has decreased survival compared to patients without SVZ-tumor invasion. No association was  
76 observed for hippocampus-tumor invasion. We also found that irradiation of the neurogenic areas  
77 leads to a worse OS in patients with high grade glioma. According to the findings of this study,  
78 avoiding irradiation of the neurogenic niches in patients with glioma may result in a better OS.

79 The survival of lung cancer patients is increasing due to improved therapies such as molecularly  
80 targeted therapies<sup>5</sup> and the incidence of BMs is rising.<sup>2</sup> To extend the survival of this patient group  
81 through appropriate radiotherapy and minimize the negative impact on their QoL, further research is  
82 necessary. Therefore, this retrospective study aims to investigate the effect of radiotherapy dose on  
83 neurogenic niches on OS in a cohort of NSCLC patients with BMs. Our hypothesis is that any dose on  
84 the neurogenic niches or overlap between lesions and neurogenic niches would result in lower OS.

85

## 86 MATERIAL AND METHODS

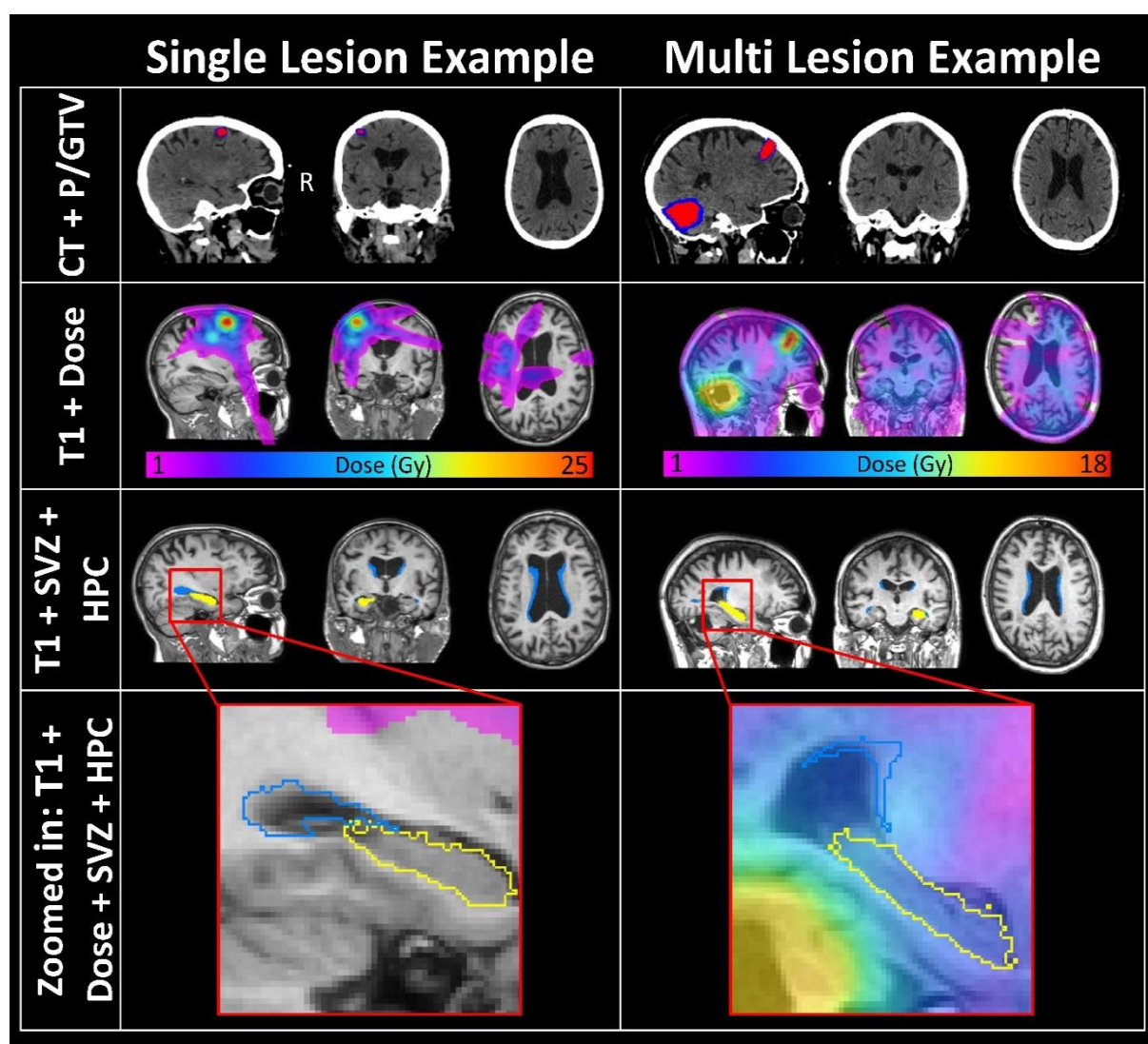
### 87 Patient Selection and clinical data collection

88 We retrospectively selected patients with BMs from NSCLC, who underwent SRS at a single academic  
89 center, the UMC Utrecht (UMCU), between December 2014 and April 2020. All patients have been  
90 referred from the UMC Utrecht and surrounding general hospitals in the Utrecht region, where they  
91 were treated for NSCLC. Inclusion criteria were: patients diagnosed with NSCLC, age  $\geq 18$  years and  
92 accessible RT planning and dosimetry data. Patients with a Karnofsky performance status (KPS) of less  
93 than 70 were only included if there was an expectation of neurological improvement as an effect of  
94 stereotactic radiosurgery. Exclusion criteria were neuro endocrine pathology and prior intracranial  
95 radiotherapy. OS was monitored until June 28<sup>th</sup> 2022 and censored afterwards. Clinical data was  
96 extracted from the electronic health record (HiX, Chipsoft, The Netherlands) or from referral data and  
97 included demographics (age, gender) as well as clinical information such as type of NSCLC, number  
98 and location of BMs, and prior systemic therapies (i.e., chemotherapy, immunotherapy and targeted  
99 therapy). Type of lung cancer was divided in (1) LUAD, including undifferentiated large cell carcinoma,  
100 and (2) LUSC. The WHO performance status was calculated based on the KPS by means of the oncology  
101 practice tool.<sup>21</sup> Gross total volume (GTV) and planning target volume (PTV) were delineated for clinical  
102 purposes by a radiation oncologist. The UMC Utrecht Medical Ethics Research Committee assessed  
103 the study protocol and waived the need for informed consent (METC 18-273).

### 104 Image processing and segmentation

105 Briefly, patients underwent pre-treatment MR scans on a 3T Philips scanner (Philips Healthcare, Best,  
106 The Netherlands) as part of standard clinical care. We collected the 3D turbo-spin echo (TSE) T1-  
107 weighted MR images without contrast enhancement, with the following parameters: TR = 8.1 ms, TE  
108 = 3.7 ms, flip angle = 8°, voxel resolution 1 × 0.96 × 0.96 mm. The planning CT scans were acquired on  
109 a Brilliance Big bore scanner (Philips Medical Systems, Best, The Netherlands), with a tube potential  
110 of 120 kVp, using a matrix size of 512 × 512 and 0.65 × 0.65 × 3.0 mm voxel size. While automated  
111 segmentation of MR images with common neuroimaging software, e.g.: FSL, SPM and FreeSurfer has  
112 great performance, it is often challenging and lead to unsatisfactory results when major abnormalities  
113 are present in the brain, such as BM lesions. In order to facilitate the segmentation, first we replaced  
114 all the abnormal tissues, that is edema, tumor cavity, etc., with healthy appearing, but fake tissue,  
115 which process is also called virtual brain grafting (VBG).<sup>22</sup> This allowed the automatic delineation of  
116 the SVZ and hippocampus regions on the VBG-enhanced T1 MR images with CAT12. The readers are  
117 kindly referred to our previous work at *Bruil et al (2022)*.<sup>20</sup>, which describe the fine details of all image  
118 processing. An example of delineation and radiotherapy plan is presented in **Figure 1**. After the

119 process finished, regions and labels covering the fake tissue were ignored from further analysis,  
120 therefore only the non-affected parts of SVZ and hippocampus were considered. Mean dose per SVZ  
121 and hippocampi labels were calculated for further analyses, while SVZ/hippocampi to lesion contact  
122 was defined when SVZ/hippocampi labels from the aforementioned segmentation process were part  
123 of the replaced fake tissue. In case SVZ/hippocampi labels were outside of the fake tissue, it is  
124 considered no lesion contact.



125

126 **Figure. 1: An example of delineation and radiotherapy** Two example patients' radiotherapy plan and the SVZ,  
127 hippocampus delineations, respectively. The patient on the left has a single brain metastatic lesion, which is distal  
128 from the both SVZ and hippocampus, while the patient of the right has two BM lesions of which one is proximal  
129 the neurogenic niches. The top two rows show the CT scan along with the PTV and CTV in blue and red respectively  
130 as well as the dose distribution. The bottom two rows show the SVZ and a hippocampus segment. Radiological  
131 view: left is right.

132

133 **Dose calculation**

134 Typically, a single fraction of RT was prescribed. In case of multiple fractions given instead of a single  
135 treatment, the dose was recalculated in single fraction equivalent dose (SFED). We defined SFED as  
136 the dose delivered in a single fraction that would have the same biologic effect as the dose-  
137 fractionation scheme, according to the method by *Park et al.(2008)*<sup>23</sup>

138

139 **Statistical Analyses**

140 The relationship between OS, lesion contact and mean dose per neurogenic niche region were  
141 analyzed with IBM SPSS (for Windows, version 25). The primary outcome of this study was OS, defined  
142 as months after the RT until date of death. In this study, we utilized Kaplan-Meier (KM) analyses to  
143 investigate the impact of lesion contact with the neurogenic niches on OS in patients. Specifically, we  
144 compared patients who had lesion contact with the neurogenic niches to those who did not.  
145 Additionally, we conducted multivariable Cox-regression analyses, corrected for the covariates  
146 outlined in the results section, to analyze OS. We set statistical significance at  $p < 0.05$ . Furthermore,  
147 we used the Variance Inflation Factor (VIF) to evaluate the presence of multi-collinearity among all  
148 covariates for each independent variable.

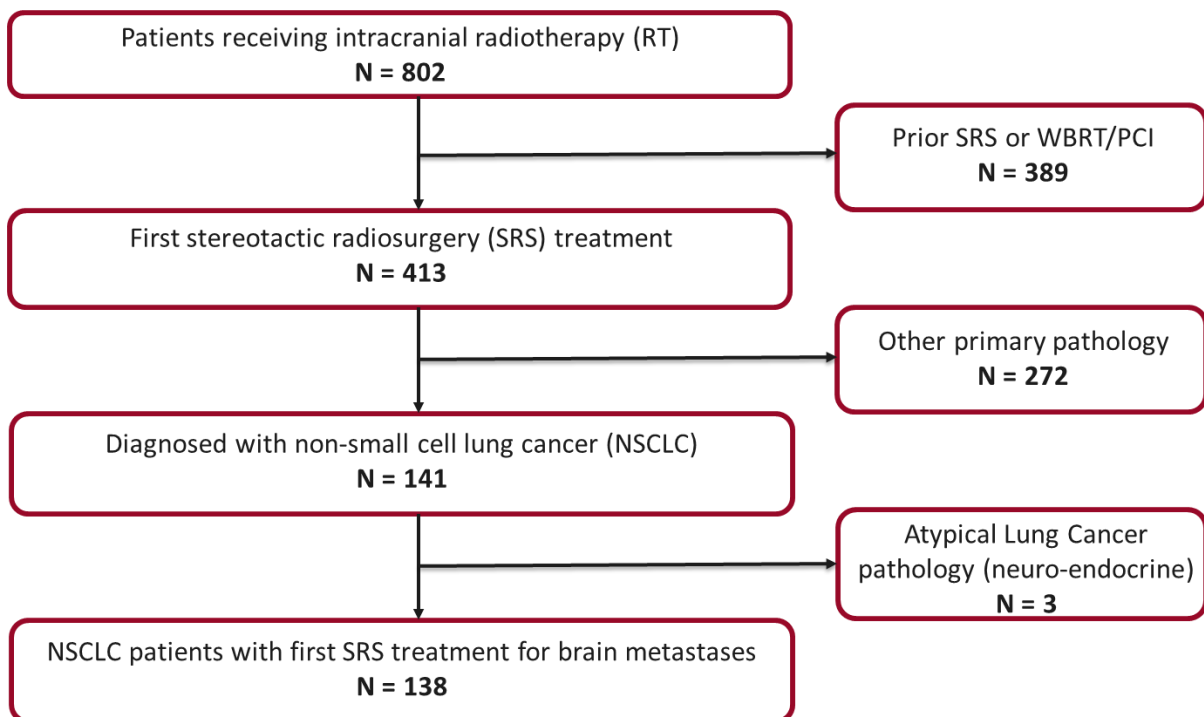
149

## 150 RESULTS

### 151 Participants

152 From December 2014 to April 2020, we identified 802 patients who underwent RT for BMs at the  
153 UMCU. Among these patients, 389 had previously received intracranial RT, such as SRS, WBRT or  
154 prophylactic cranial irradiation (PCI), and were therefore excluded from the study. Of the 413 patients  
155 who met the inclusion criteria, 141 were diagnosed with BMs from non-small cell lung cancer (NSCLC).  
156 After excluding 3 patients with neuroendocrine pathology, the final study cohort comprised 138  
157 patients. The patient inclusion flowchart is shown in **Figure 2**. Baseline patient and treatment  
158 characteristics are shown in **Table 1**. The median age was 67 years (interquartile range 60 -74) and the  
159 male-female distribution was even. 28 (20%) patients underwent surgery prior to RT of whom 21  
160 patients had a complete macroscopic resection of one lesion, next to other unresected BMs. A total  
161 of 29.7% of the patients received a concurrent combination of chemotherapy and other systemic  
162 treatments, 28.4% was treated by chemotherapy alone and 19.1% received immunotherapy/target  
163 therapy only.

164



165 **Figure 2: Flowchart of patient inclusion**

166 *RT: Radiotherapy, SRS: Stereotactic radiosurgery, WBRT: Whole brain radiotherapy, PCI: Prophylactic cranial*  
167 *irradiation, NSCLC; non-small cell lung cancer*

168

169

<b>Table 1: Baseline patient and treatment characteristics</b>	
Patient count (%)	138 (100)
Median age in years (Range)	67 (60 -74)
Sex	
Female (%)	69 (50)
Male (%)	69 (50)
WHO performance status	
0 (%)	30 (21.7)
1 (%)	86 (62.3)
2 (%)	11 (8.0)
3 (%)	4 (2.9)
Missing (%)	7 (5.1)
Type of lung cancer	
LUAD (%)	102 (73.9)
LUSC (%)	21 (15.2)
Missing (%)	15 (10.9)
Total intracranial volume in cm3 (IQR)	1467 (1383 – 1576)
SVZ volume in mm3 (IQR)	10794 (9267 – 13258)
SGZ volume in mm3 (IQR)	1607 (1481 – 1757)
Number of brain metastases	
1 (%)	68 (49.3)
2-4 (%)	54 (39.1)
>4 (%)	16 (11.6)
Subventricular zone-tumor contact	
Yes (%)	34 (24.6)
No (%)	104 (75.4)
Hippocampus-tumor contact	
Yes (%)	10 (7.2)
No (%)	128 (92.8)
Single-fraction equivalent dose (IQR)	21 (21 – 24)
Median RT dose in SVZ in Gy (IQR)	1.50 (0.86-2.73)
Median RT dose in HPC in Gy (IQR)	1.24 (0.48 – 2.25)
Number of fractions	
1 (%)	114 (82.6)
3 (%)	23 (16.7)
5 (%)	1 (0.7)
Brain surgery	
Yes (%)	28 (20.3%)
No (%)	110 (79.7%)
Extent of surgery	
Partial resection (%)	7 (25%)
Complete resection (%)	21 (75%)
Any chemotherapy	
Yes (%)	81 (58.7)
No (%)	54 (39.1)
Missing (%)	3 (2.2)
Any other systemic therapy	
Yes (%)	67 (48.6)
No (%)	66 (47.8)
Missing (%)	5 (3.6)

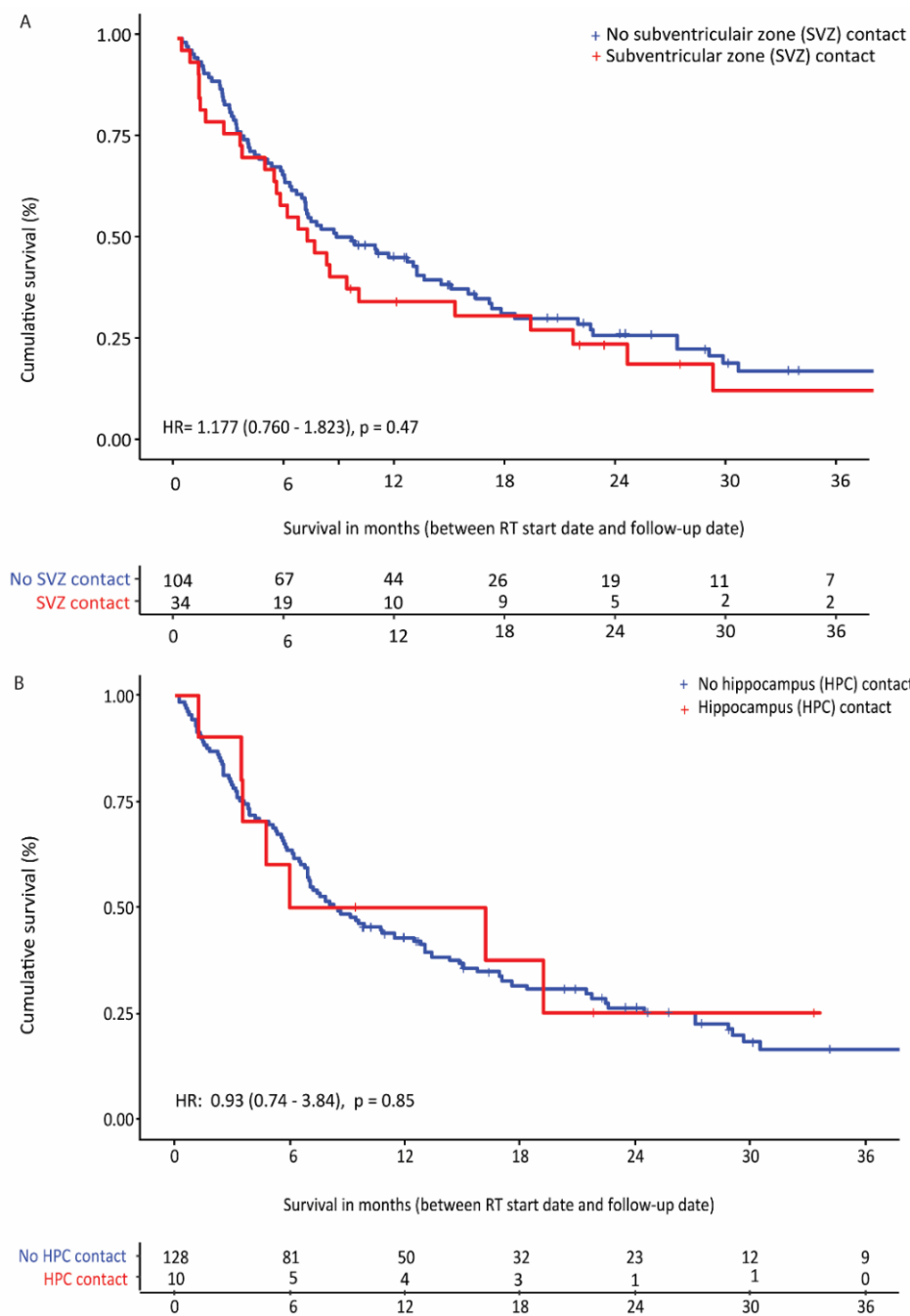
170 LUAD: Lung Adenocarcinoma, LUSC: Lung Squamous Cell Carcinoma, RT: Radiotherapy, SVZ: Subventricular  
 171 zone, SGZ: Subgranular zone

172



173 **Survival Analysis**

174 At time of censoring, 107 (78%) of the 138 patients within our cohort had deceased, with a median OS  
 175 from start of RT of 8.4 months (range 0.23 – 64.7 months). In LUAD, we observed a median OS rate of  
 176 9.6 months and for LUSC 5.1 months, which were not significantly different ( $p = 0.461$ ). As can be seen  
 177 in **Figure 3** and **Table 2**, we found no association between OS and lesion contact with the SVZ or HPC  
 178 in univariate, nor different multivariate setups.



179  
 180 **Figure 3: A) Kaplan-Meier overall survival according to tumor contact with the subventricular zone (SVZ) B)**  
 181 **Kaplan-Meier overall survival according to tumor contact with the hippocampus (HPC).**  
 182 *HR=hazard ratio. LUAD=lung adenocarcinoma. LUSC=lung squamous cell carcinoma*

<b>Table 2: Univariable and multivariable Cox regression analysis of no tumor contact/tumor contact with the subventricular zone (SVZ) on overall survival (OS).</b> Analyses with p < 0.05 are considered significant and bolded in the table.			
Univariable:		p-value	0.465
		HR	1.177
		95.0 % CI	
		Lower	0.760
		Upper	1.823
Multivariable, corrected for:	Age, Sex, WHO performance status, type of lung cancer, SVZ volume	P-value	0.336
		HR	1.265
			0.783
		95.0% CI	
		Lower	
		Upper	2.042
Multivariable, corrected for:	Age, Sex, WHO performance status, type of lung cancer, SVZ volume, number of brain metastases, metastases elsewhere in the body, chemotherapy, any other systemic therapy, resection extent	p-value	<b>0.047</b>
		HR	<b>1.670</b>
		95.0% CI	
		Lower	<b>1.006</b>
		Upper	<b>2.773</b>
Multivariable, corrected for:	Age, Sex, WHO performance status, type of lung cancer, SVZ volume, number of brain metastases, metastases elsewhere in the body, chemotherapy, any other systemic therapy, resection extent, % PTV within the SVZ	p-value	0.220
		HR	1.472
		95.0% CI	
		Lower	0.794
		Upper	2.727

183

<b>Table 3: Univariable and multivariable Cox regression analysis of no tumor contact/tumor contact with the hippocampus (HPC) on overall survival (OS).</b> Analyses with p < 0.05 are considered significant and bolded in the table.			
Univariable:		p-value	0.852
		HR	0.930
		95.0% CI	
		Lower	0.431
		Upper	2.003
Multivariable, corrected for:	Age, Sex, WHO performance status, type of lung cancer, SGZ volume	p-value	0.209
		HR	1.692
		95.0 % CI	
		Lower	0.745
		Upper	3.843
Multivariable, corrected for:	Age, Sex, WHO performance status, type of lung cancer, SGZ volume, number of brain metastases, metastases elsewhere in the body, chemotherapy, any other systemic therapy, resection extent	p-value	0.157
		HR	1.839
		95.0% CI	
		Lower	0.791
		Upper	4.275
Multivariable, corrected for:	Age, Sex, WHO performance status, type of lung cancer, SGZ volume, number of brain metastases, metastases elsewhere in the body, chemotherapy, any other systemic therapy, resection extent, % PTV within the SGZ	p-value	0.163
		HR	1.821
		95.0% CI	
		Lower	0.784
		Upper	4.231

184 HPC: Hippocampus, SGZ: subgranular zone, PTV: Planned target volume.

185 **Table 4** and **5** show the results of the univariate- and multivariate Cox-regression between mean  
 186 SVZ/HPC dose and OS, respectively. Both the radiotherapy dose on SVZ and HPC have a significant

187 negative association with OS after adjustment for covariates with HR of 1.366 ( $p = 0.041$  [95%  
 188 confidence interval (CI) 1.013– 1.842]) and 1.194 ( $p = 0.037$  [95% CI 1.010 – 1.411]), respectively.

<b>Table 4: Univariable and multivariable Cox regression analysis of dose on the subventricular zone (SVZ) on overall survival (OS).</b> Analyses with $p < 0.05$ are considered significant and bolded in the table.			
Univariable:		p-value	0.136
		HR	1.103
		95.0% CI	Lower 0.979 Upper 1.255
Multivariable, corrected for:	Age, Sex, WHO performance status, type of lung cancer, SVZ volume	p-value	<b>0.032</b>
		HR	<b>1.149</b>
		95.0% CI	Lower <b>1.012</b> Upper <b>1.305</b>
Multivariable, corrected for:	Age, Sex, WHO performance status, type of lung cancer, SVZ volume, number of brain metastases, metastases elsewhere in the body, chemotherapy, immunotherapy, resection extent	p-value	<b>0.008</b>
		HR	<b>1.223</b>
		95.0% CI	Lower <b>1.054</b> Upper <b>1.418</b>
Multivariable, corrected for:	Age, Sex, WHO performance status, type of lung cancer, SVZ volume, number of brain metastases, metastases elsewhere in the body, chemotherapy, immunotherapy, resection extent, % PTV within the SVZ	p-value	<b>0.041</b>
		HR	<b>1.366</b>
		95.0% CI	Lower <b>1.013</b> Upper <b>1.842</b>

189 SVZ: subventricular zone, PTV: Planned target volume.

<b>Table 5: Univariable and multivariable Cox regression analysis of dose on the hippocampus (HPC) on overall survival (OS).</b> Analyses with $p < 0.05$ are considered significant and bolded in the table.			
Univariable:		p-value	0.087
		HR	1.113
		95.01% CI	Lower 0.984 Upper 1.258
Multivariable, corrected for:	Age, Sex, WHO performance status, type of lung cancer, SGZ volume	p-value	0.058
		HR	1.144
		95.0% CI	Lower 0.996 Upper 1.314
Multivariable, corrected for:	Age, Sex, WHO performance status, type of lung cancer, SGZ volume, number of brain metastases, metastases elsewhere in the body, chemotherapy, any other systemic therapy, resection extent	p-value	0.091
		HR	1.146
		95.0% CI	Lower 0.978 Upper 1.341
Multivariable, corrected for:	Age, Sex, WHO performance status, type of lung cancer, SGZ volume, number of brain metastases, metastases elsewhere in the body, chemotherapy, any other systemic therapy, resection extent, % PTV within the SGZ	p-value	<b>0.037</b>
		HR	<b>1.194</b>
		95.0% CI	Lower <b>1.010</b> Upper <b>1.411</b>

190 HPC: Hippocampus, SGZ: subgranular zone, PTV: Planned target volume.

191 Our study showed that WHO performance status is correlated to OS.

## 192 DISCUSSION

193 This retrospective study was designed to determine the effect of radiotherapy dose from the  
194 neurogenic niches on OS and if lesion contact with the SVZ or the HPC regions affect OS in patients  
195 with BMs from NSCLC.

196 Multivariate cox regression analysis showed a negative association between OS and radiotherapy dose  
197 on the SVZ or the HPC after adjusting for confounding variables. The SVZ plays a pivotal role in  
198 neurogenesis and brain repair mechanisms in adults, as reported by Capilla-Gonzalez et al. (2016).<sup>15</sup>  
199 Therefore, it could be hypothesized that reduced brain repair capacity due to radiation-induced  
200 damage to the SVZ may contribute to the negative impact on OS. In addition, previous research has  
201 highlighted the role of adult NSCs of the HPC in regulating cognitive function such as learning and  
202 memory.<sup>18</sup> Moreover, literature suggest that, independent of initial level of cognition, a faster decline  
203 of cognitive function is associated with a higher mortality.<sup>24</sup> Based on such functions, the importance  
204 of hippocampal avoidance to maintain neurocognitive function is established. In line with this, clinical  
205 trials already have supported this observation by demonstrating that hippocampal avoidance during  
206 whole-brain radiation therapy (HA-WBRT) can lead to a considerable decrease in cognitive decline.<sup>25</sup>  
207 Currently, there is a limited number of investigations reporting the relationship between dose  
208 received by the SVZ regions in CNS tumors and neurocognitive decline after radiotherapy, which  
209 showed deterioration in cognition after higher radiation dose on the SVZ.<sup>26</sup> Further research should  
210 be conducted to investigate this in more detail. Our ongoing 'Cohort for patient-reported Outcomes,  
211 Imaging and trial inclusion in Metastatic BRAin disease' (COIMBRA) trial (*ClinicalTrials.gov Identifier:*  
212 *NCT05267158*) is an example of such an initiative that can confirm the effect of radiation dose on the  
213 neurogenic niches on cognitive functioning of patients with BMs.

214 This current study showed no relationship between lesion contact with the neurogenic niches and OS  
215 of patients with BMs from NSCLC. Likely due to the sample size of the group with contact with the  
216 neurogenic niches, we were unable to determine whether the extent of contact has a significant  
217 impact. Previous research suggested that components of the neurogenic niches stimulate metastatic  
218 tumor growth<sup>27</sup>, suggesting that tumor growth is inhibited when this component of the neurogenic  
219 niches is disrupted by radiation damage to the NSCs. Future research should aim at gaining more  
220 insight into the role of NSCs in metastatic pathways.

221 The current study adds significant value to the field of neuro-oncological imaging by providing novel  
222 insights into the impact of radiotherapy dose on the neurogenic niches in NSCLC patients with BMs.  
223 The study utilized high-quality imaging data and a specially developed atlas<sup>20</sup> to enable accurate  
224 delineation of the regions of interest. Moreover, the patient population included in the study reflects

225 the average patient with BMs from NSCLC, increasing the generalizability of the findings. These  
226 strengths enhance the potential clinical significance and impact of the study, providing a strong  
227 foundation for future research in this area.

228 There are several limitations to our study. Ideally, we had a more even distribution between the group  
229 with the patients with lesion contact with the SVZ or HPC and the patients without, as this would give  
230 our statistical analysis more power and would give us the opportunity to also investigate the subject  
231 in subgroups such as type of lung cancer and number of BMs. Nevertheless, previous studies already  
232 suggested that the overall risk for the incidence of metastases in the neurogenic niches is quite low.  
233 <sup>17,28</sup> It seems that our cohort is an accurate reflection of the population and lesion contact with the  
234 neurogenic niches is indeed less common. While the inclusion of patients referred from multiple  
235 hospitals allowed for a more diverse patient population in the study, one disadvantage is the  
236 occurrence of missing data regarding specific gene mutations and progression free survival (PFS).

237 Our study shows a median OS of 8.3 months in selected patients with BMs from NSCLC. Furthermore,  
238 the results indicate that any RT dose to the neurogenic niches is correlated with poorer OS in these  
239 patients, which is in line with results in our previous study in glioma patients. Based on these data, we  
240 suggest that avoidance of these niches is important to extent the OS. However, in a broader NSCLC  
241 population with BMs, without any treatment the median survival is only 2 months.<sup>7,29</sup> When avoidance  
242 of the neurogenic niches with radiation is not possible, it is important to carefully consider the  
243 potential risks and benefits of RT in patients with BMs from NSCLC. To verify our OS results and explore  
244 the effects on neurocognitive functioning in patients with BMs it is necessary to conduct comparable  
245 clinical trials prospectively involving larger cohorts of patients suffering from BMs such as the  
246 COIMBRA trial.

247

248 **DATA AVAILABILITY STATEMENT**

249 The data will be made available upon publication.

250

## 251 REFERENCES

- 252 1. Nooreldeen R, Bach H. Current and future development in lung cancer diagnosis. Vol. 22,  
253 International Journal of Molecular Sciences. 2021.
- 254 2. Barnholtz-Sloan JS, Sloan AE, Davis FG, Vigneau FD, Lai P, Sawaya RE. Incidence Proportions of  
255 Brain Metastases in Patients Diagnosed (1973 to 2001) in the Metropolitan Detroit Cancer  
256 Surveillance System. *Journal of Clinical Oncology*. 2004 Jul 15;22(14):2865–72.
- 257 3. Fenske DC, Price GL, Hess LM, John WJ, Kim ES. Systematic Review of Brain Metastases in  
258 Patients With Non–Small-Cell Lung Cancer in the United States, European Union, and Japan.  
259 *Clin Lung Cancer*. 2017 Nov 1;18(6):607–14.
- 260 4. Nayak L, Lee EQ, Wen PY. Epidemiology of brain metastases. *Curr Oncol Rep*. 2012;14(1):48–  
261 54.
- 262 5. Sperduto PW, Yang TJ, Beal K, Pan H, Brown PD, Bangdiwala A, et al. Estimating survival in  
263 patients with lung cancer and brain metastases an update of the graded prognostic  
264 assessment for lung cancer using molecular markers (Lung-molGPA). Vol. 3, *JAMA Oncology*.  
265 2017. p. 827–31.
- 266 6. Mujoomdar A, Austin JHM, Malhotra R, Powell CA, Pearson GDN, Shiau MC, et al. Clinical  
267 Predictors of Metastatic Disease to the Brain from Non–Small Cell Lung Carcinoma: Primary  
268 Tumor Size, Cell Type, and Lymph Node Metastases. *Radiology*. 2007 Mar;242(3):882–8.
- 269 7. Peters S, Bexelius C, Munk V, Leigh N. The impact of brain metastasis on quality of life,  
270 resource utilization and survival in patients with non-small-cell lung cancer. *Cancer Treat Rev*.  
271 2016 Apr;45:139–62.
- 272 8. Hatton N, Samuel R, Riaz M, Johnson C, Cheeseman S, Snee M. A study of non small cell lung  
273 cancer (NSCLC) patients with brain metastasis: A single centre experience. *Cancer Treat Res*  
274 *Commun [Internet]*. 2023 Jan 1 [cited 2023 Jan 11];34:100673. Available from:  
275 <https://linkinghub.elsevier.com/retrieve/pii/S2468294222001642>
- 276 9. Goldberg SB, Contessa JN, Omay SB, Chiang V. Lung Cancer Brain Metastases. *The Cancer*  
277 *Journal*. 2015 Sep;21(5):398–403.
- 278 10. Shaw E, Scott C, Souhami L, Dinapoli R, Kline R, Loeffler J, et al. Single dose radiosurgical  
279 treatment of recurrent previously irradiated primary brain tumors and brain metastases: final  
280 report of RTOG protocol 90-05. *International Journal of Radiation Oncology\*Biophysics\*Physics*.  
281 2000 May;47(2):291–8.
- 282 11. McTyre E, Scott J, Chinnaiyan P. Whole brain radiotherapy for brain metastasis. *Surg Neurol*  
283 *Int*. 2013;4(Suppl 4):S236-44.
- 284 12. Brown PD, Ballman K v., Cerhan JH, Anderson SK, Carrero XW, Whitton AC, et al.  
285 Postoperative stereotactic radiosurgery compared with whole brain radiotherapy for  
286 resected metastatic brain disease (NCCTG N107C/CEC-3): a multicentre, randomised,  
287 controlled, phase 3 trial. Vol. 18, *The Lancet Oncology*. 2017. p. 1049–60.
- 288 13. Nagtegaal SHJ, David S, van Grinsven EE, van Zandvoort MJE, Seravalli E, Snijders TJ, et al.  
289 Morphological changes after cranial fractionated photon radiotherapy: Localized loss of white

- 290 matter and grey matter volume with increasing dose. *Clin Transl Radiat Oncol*. 2021  
291 Nov;31:14–20.
- 292 14. Nagtegaal SHJ, David S, Philippens MEP, Snijders TJ, Leemans A, Verhoeff JJC. Dose-  
293 dependent volume loss in subcortical deep grey matter structures after cranial radiotherapy.  
294 *Clin Transl Radiat Oncol* [Internet]. 2021 Jan 1 [cited 2023 Mar 28];26:35. Available from:  
295 [/pmc/articles/PMC7691672/](https://pubmed.ncbi.nlm.nih.gov/37691672/)
- 296 15. Capilla-Gonzalez V, Bonsu JM, Redmond KJ, Garcia-Verdugo JM, Quiñones-Hinojosa A.  
297 Implications of irradiating the subventricular zone stem cell niche. *Stem Cell Res*. 2016  
298 Mar;16(2):387–96.
- 299 16. Achanta P, Capilla-Gonzalez V, Purger D, Reyes J, Sailor K, Song H, et al. Subventricular zone  
300 localized irradiation affects the generation of proliferating neural precursor cells and the  
301 migration of neuroblasts. *Stem Cells*. 2012;30(11):2548–60.
- 302 17. Wan JF, Zhang SJ, Wang L, Zhao K le. Implications for preserving neural stem cells in whole  
303 brain radiotherapy and prophylactic cranial irradiation: A review of 2270 metastases in 488  
304 patients. *J Radiat Res*. 2013;54(2):285–91.
- 305 18. Khacho M, Harris R, Slack RS. Mitochondria as central regulators of neural stem cell fate and  
306 cognitive function. *Nat Rev Neurosci*. 2019 Jan;20(1):34–48.
- 307 19. Michaelidesová A, Konířová J, Bartůněk P, Zíková M. Effects of radiation therapy on neural  
308 stem cells. *Genes (Basel)*. 2019;10(9).
- 309 20. Bruil DE, David S, Nagtegaal SHJ, de Sonnaville SFAM, Verhoeff JJC. Irradiation of the  
310 subventricular zone and subgranular zone in high- and low-grade glioma patients: an atlas-  
311 based analysis on overall survival. *Neurooncol Adv* [Internet]. 2022 Jan 1;4(1):1–12. Available  
312 from: <https://academic.oup.com/noa/article/doi/10.1093/noajnl/vdab193/6506538>
- 313 21. Oken MM, Creech RH, Davis TE. Toxicology and response criteria of the Eastern Cooperative  
314 Oncology Group. Vol. 5, *American Journal of Clinical Oncology: Cancer Clinical Trials*. 1982. p.  
315 649–55.
- 316 22. Radwan AM, Emsell L, Blommaert J, Zhylka A, Kovacs S, Theys T, et al. Virtual brain grafting:  
317 Enabling whole brain parcellation in the presence of large lesions. *Neuroimage*. 2021 Apr  
318 1;229:117731.
- 319 23. Park C, Papiez L, Zhang S, Story M, Timmerman RD. Universal Survival Curve and Single  
320 Fraction Equivalent Dose: Useful Tools in Understanding Potency of Ablative Radiotherapy.  
321 *Int J Radiat Oncol Biol Phys*. 2008;70(3):847–52.
- 322 24. van Gelder BM, Tjihuis MAR, Kalmijn S, Giampaoli S, Kromhout D. Decline in Cognitive  
323 Functioning Is Associated with a Higher Mortality Risk. *Neuroepidemiology* [Internet]. 2007  
324 [cited 2023 Mar 28];28(2):93–100. Available from:  
325 <https://www.karger.com/Article/FullText/98552>
- 326 25. Gondi V, Pugh SL, Tome WA, Caine C, Corn B, Kanner A, et al. Preservation of Memory With  
327 Conformal Avoidance of the Hippocampal Neural Stem-Cell Compartment During Whole-  
328 Brain Radiotherapy for Brain Metastases (RTOG 0933): A Phase II Multi-Institutional Trial.  
329 *Journal of Clinical Oncology*. 2014 Dec 1;32(34):3810–6.



- 330 26. Valiyaveettil D, G A, Malik M, Eaga P, Ahmed SF, Joseph D. “A prospective study of  
331 assessment of neurocognitive function in illiterate patients with gliomas treated with  
332 chemoradiation”: Assessment of neurocognitive function in gliomas. *Cancer Treat Res*  
333 *Commun.* 2021 Jan 1;26:100288.
- 334 27. Hoshide R, Jandial R. The role of the neural niche in brain metastasis. *Clin Exp Metastasis.*  
335 2017;34(6–7):369–76.
- 336 28. Oskan F, Ganswindt U, Schwarz SB, Manapov F, Belka C, Niyazi M. Hippocampus sparing in  
337 whole-brain radiotherapy: A review. *Strahlentherapie und Onkologie.* 2014;190(4):337–41.
- 338 29. Jeene PM, de Vries KC, van Nes JGH, Kwakman JJM, Wester G, Rozema T, et al. Survival after  
339 whole brain radiotherapy for brain metastases from lung cancer and breast cancer is poor in  
340 6325 Dutch patients treated between 2000 and 2014. *Acta Oncol (Madr).* 2018  
341 May;57(5):637–43.
- 342
- 343