

1 **Trends in the 30-year span of Noninfectious Cardiovascular Implantable Electronic Device**
2 **Complications in Olmsted County**

3 Gurukripa N. Kowlgi, MBBS¹; Vaibhav Vaidya, MBBS¹; Ming-Yan Dai¹; Rahul Mishra¹; David
4 O. Hodge³; Abhishek J. Deshmukh, MBBS¹; Siva K. Mulpuru, MD, MPH; Paul A. Friedman,
5 MD; Yong- Mei Cha, MD¹

6 1. Department of Cardiovascular Medicine, Mayo Clinic, Rochester, MN 55905, USA

7 2. Department of Quantitative Health Sciences, Jacksonville, FL 32224, USA

8

9 **Word count: 4902 words**

10

11 **Corresponding author:**

12 Yong-Mei Cha, MD, FHRS

13 Professor of Medicine

14 Mayo Clinic, 200 First St SW

15 Rochester, MN 55905, USA

16 E-mail: ycha@mayo.edu;

17 Phone: 5072843585; Fax: 5072552550

18

19

20 **Abstract:**

21 **Background:** Cardiovascular implantable electronic devices (CIEDs) such as permanent
22 pacemakers, implantable cardioverter-defibrillators, and cardiac resynchronization therapy
23 devices alleviate morbidity and mortality in various diseases. There is a paucity of real-world
24 data on CIED complications and trends.

25 **Objectives:** Describe trends in noninfectious CIED complications over the past three decades in
26 Olmsted County.

27 **Methods:** The Rochester Epidemiology Project is a medical records linkage system comprising
28 records of over 500,000 residents of Olmsted County from 1966-current. CIED implants between
29 1988-2018 were determined. Trends in noninfectious complications within 30 days of implant
30 were analyzed.

31 **Results:** 175 out of 2536 (6.9%) patients who received CIED experienced device complications.
32 3.8% of the implants had major complications requiring intervention. Lead dislodgement was the
33 most common (2.9%), followed by hematoma (2.1%). Complications went up from 1988 to
34 2005, then showed a downtrend until 2018, driven by a decline in hematomas in the last decade
35 ($p < 0.01$). Those with complications were more likely to have prosthetic valves. Obesity appeared
36 to have a protective effect in a multivariate regression model. The mean Charlson comorbidity
37 score has trended up over the 30 years.

38 **Conclusions:** Our study describes a real-world trend of CIED complications over three decades.
39 Lead dislodgements and hematomas were the most common complications. Complications have
40 declined over the last decade due to safer practices and a better understanding of anticoagulant
41 management.

42 **Key Words:** Cardiovascular implantable electronic devices, pacemaker, implantable
43 cardioverter-defibrillator, cardiac resynchronization therapy, complications.

44

45 **Abbreviations:**

46 CIED: Cardiac Implantable Electronic Devices

47 ICD: Implantable Cardioverter-Defibrillator

48 PPM: Permanent Pacemaker

49 CRT: Cardiac Resynchronization Therapy

50 CRT-P: Cardiac Resynchronization Therapy - Pacemaker

51 CRT-D: Cardiac Resynchronization Therapy - Defibrillator

52 FDA: Food and Drug Administration

53 REP: Rochester Epidemiology Project

54 ICD-9/10: International Classification of Diseases 9th /10th Revision

55 CPT: Current Procedural Terminology

56 NIS: National Inpatient Sample

57 NCDR: National Cardiovascular Data Registry

58

59 **Introduction:**

60 Cardiac implantable electronic devices (CIEDs) such as the permanent pacemaker (PPM),
61 implantable cardioverter-defibrillator (ICD), and cardiac resynchronization therapy (CRT)
62 systems are ubiquitously employed for managing a variety of cardiac arrhythmia and
63 comorbidities. In recent years, we have witnessed an expansion in the indications for CIED
64 implantation¹⁻⁴. CIEDs have augmented patient quality of life, reduced hospitalization length,
65 and reduced mortality⁵⁻⁷.

66 Notwithstanding substantial technological improvements, complications involving CIED
67 implants remain a significant issue⁸⁻¹⁰. Acute complications of CIED implants include lead
68 dislodgement, perforation, pneumothorax, pocket hematoma, infection, and upper extremity deep
69 vein thrombosis (DVT)⁸⁻¹¹. With an increase in life expectancy and expanding CIED implant
70 indications, implant-related adverse events are anticipated¹²⁻¹⁴. Device complications are critical
71 to detect and manage to improve patient safety, prevent reoperations, reduce the length of
72 hospital stay, and mitigate downstream healthcare costs^{15,16}.

73 The majority of what we know about CIED complications is curated from secondary
74 analysis of randomized trials^{10,17}, registry-based studies^{18,19}, or hospital-based databases^{15,20}.
75 Administrative-claims-based databases have been shown to have low specificity in determining
76 true CIED complications²¹. There exists a paucity of real-life population-based data on the
77 incidence, trends, and predictors of CIED complications. There exists a paucity of real-life
78 population-based data on the incidence, trends, and predictors of CIED complications. Our group
79 has previously published data on the trends of CIED infections¹⁴. In the present study, we

80 present retrospective population-based data on the noninfectious mechanical CIED
81 complications between 1988 and 2018.

82 **Methods:**

83 *Data source*

84 Our study was approved by the Mayo Clinic Institutional Review Board and received proper
85 ethical oversight. Data were obtained from the Rochester Epidemiology Project (REP). The REP
86 is a medical records linkage system containing medical records of all residents of Olmsted
87 County, MN, from January 1, 1966, to the present, consisting of follow-up data on more than
88 500,000 unique individuals. Patient demographics, diagnostic codes such as the international
89 classification of diseases 9th and 10th revision (ICD-9/10-CM) codes, and surgical procedure
90 codes are recorded for all individuals. Paper and electronic medical records of these individuals
91 are available for the generation of additional data. The REP permits the collection of population-
92 based data and has been used to define the incidence of various medical conditions. It consists of
93 two major hospital systems in Olmsted County (Mayo Clinic and Olmsted Medical Center) and
94 smaller practices.

95 *Study population*

96 The REP database was used to determine all patients who received CIED implantation between
97 1988 and 2018. During the study period, Mayo Clinic and Olmsted Medical Center were the only
98 two institutions in Olmsted County performing CIED implantation and follow-up. There were
99 four device implanters in the early 1990s and ten in 2018. Patients receiving CIEDs were
100 determined based on ICD-9 CM and ICD-10 PCS codes. Data on subsequent device upgrades
101 from PPM to ICD or CRT or ICD to CRT were collected using ICD-9 and 10 codes and

102 manually verified. For this study, we only included procedures that involved intracardiac lead
103 implantation. Thus, subcutaneous ICDs, generator change, and device extraction without lead
104 implantation/revision were excluded. Data regarding baseline demographics and comorbidities
105 were obtained from the REP and abstracted from the medical records. The patients' charts with
106 device complications were manually reviewed to confirm the complications. The Charlson
107 comorbidity index is a score derived from multiple risk factors that predict 1-year survival and
108 can be used as a surrogate for comorbidity. CCI was calculated for all patients at the time of the
109 CIED implant. The unique complications were defined by a composite of ICD-9 and ICD-10
110 diagnosis codes, summarized in the **Supplemental Tables 1A-E**. For lead dislodgement, we
111 used codes for a lead revision within 30 days and confirmed lead dislodgement through manual
112 chart review. The clinical definitions for post-implant complications for this study are as follows.
113 Notably, repeat surgical intervention was not a criterion to code the complications, and even
114 those that were conservatively managed were included.

115 Perforation: Any new pericardial effusion, with or without hemodynamic compromise.

116 Hematomas: Any pocket bleeding that led to interruption of oral anticoagulant therapy,
117 prolonged hospitalization > 24 hours.

118 Pneumothorax: Any pneumothorax detected on post-procedure chest radiography

119 Lead dislodgement: Included macro-dislodgement as evident on a chest radiograph, and micro-
120 dislodgement that were detected based on acute rise in capture thresholds.

121 *Statistical analysis*

122 Normally distributed continuous variables and expressed as mean \pm standard deviation. The
123 overall frequency of CIED complications was determined using the number of complications

124 divided by the population at risk (device implants) in Olmsted County in the same period. Trends
125 in complications over time, across age groups, and between genders are estimated using Poisson
126 regression models. Comparisons between implant groups for categorical factors were completed
127 using Chi-square tests. Continuous factors were compared between groups using the analysis of
128 Variance. Overall survival was estimated using the Kaplan-Meier method. These curves were
129 compared between groups using log-rank tests. P-values less than 0.05 were considered
130 significant. All analysis was completed using SAS version 9.4.

131 **Results:**

132 *Population characteristics:*

133 Between 1988 and 2018, there were 2536 CIED initial implants in Olmsted County, including
134 1927 PPMs (single and dual-chamber), 440 ICDs, and 169 CRT (pacemaker and defibrillator)
135 devices. The mean age at device implantation was 73.9 ± 14.3 years. Women comprised 42.1%
136 of all CIED recipients in the study. 197 complications were seen in 175 (6.9%) patients. There
137 was a significant difference in some baseline characteristics among patients with and without
138 CIED complications (**Table 1**). Patients with CIED complications were more likely to have
139 prosthetic valves and less likely to be obese or diabetic. Of the 197 complications, there were 75
140 (2.9%) lead dislodgements, 53 (2.1%) pocket hematomas, 42 (1.6%) pneumothoraces, and 27
141 (1.1%) cardiac perforations (**Table 2**). Patients with cardiac perforation were more likely to be
142 female and less likely to have cardiomyopathy (**Table 3**). There was a higher frequency of
143 cardiomyopathy, prosthetic valves, and stroke in those patients who suffered pocket hematomas.
144 Patients with pneumothoraces were older, more likely to be females, and less likely to have
145 obesity or cardiomyopathy. There was no demographic predisposition to lead dislodgement.

146 *Summary of complications*

147 Of the patients with complications, 97 (3.8% of all implants) were classified as major
148 complications requiring a procedural intervention as described. The number of complications per
149 patient was one (133/175), two (18/175), or three (2/175). Over three-quarters of the patients
150 with complications (135/175) had PPM implants. Sixteen percent of the patients with
151 complications (28/175) underwent ICD implantation, and the remaining 6.9% (12/175) occurred
152 in the CRT group. The complication rates in pacemakers, ICD, and CRT were 7%, 6.4%, and
153 7.1% (p=NS).

154 Of the 27 (1.1%) patients who had perforations, about half required pericardiocentesis
155 (13/27). Only 5.7% (3/53) of the patients who developed hematomas required pocket re-entry to
156 resolve the bleeding. The majority (88.7%) of the patients who developed hematomas were on
157 either anticoagulation or antiplatelet medications or both, with 16.9% (9/53) receiving
158 periprocedural heparin (all before 2013). More than two-thirds [69.1%, (29/42)] of patients with
159 pneumothoraces were managed conservatively, and the rest required chest tube placement
160 temporarily before resolution. Of the 75 patients with lead dislodgement, 35 (46.7%) had atrial
161 lead dislodgement, 35 (46.7%) had their right ventricular lead dislodged, and 5 (5.3%) had their
162 coronary sinus lead dislodged. Ninety-two percent of patients (69/75) had to have their dislodged
163 lead revised.

164 *Temporal trends in CIED complications:*

165 Temporal trends were compared between five intervals: 1988-93, 94-99, 2000-2005, 2006-11,
166 and 2012-18. There was a significant change in the proportion of complications over time
167 (**Figure 1**). The total complications increased between 1988-93 to 2000-05; from 2.1% to 10.1%;

168 and subsequently decreased to 7.7% in 2012-2018, $p=0.001$. Similar trends were noted for
169 hematomas, $p<0.01$. There were variations in the frequencies of patients with perforations,
170 pneumothoraces, and lead dislodgement; however, these were not statistically significant.

171 In relation to total implants, the percentage of pacemakers implanted has steadily
172 declined over the years. The age and sex-adjusted incidence of PPM implantation increased
173 between 1988-93 and 2000-05; then decreased in 2012-2018. The age and sex-adjusted incidence
174 of ICD implantation increased between 1988-93 and 2000-05, then decreased in 2012-2018. In
175 contrast, the age and sex-adjusted incidence of CRT implantation continued to increase
176 significantly from 2000-05 to 2012-18(Figure 2A)²². The complications trends showed an initial
177 increase in these groups followed by a decline in more recent years, statistically significant
178 within each group, $p< 0.05$ (Figure 2B).

179 *Age and sex trends in CIED complications*

180 When stratified by age, the percentage of implants for all periods was the lowest in patients < 50
181 years, higher in 50-70 years, and highest in patients > 70 years of age, $p<0.01$ (**Figure 3A**). The
182 trend of complications in patients >50 years increased from 1988 to 2005 and then trended down
183 ($p<0.05$). In patients under 50 years of age, the frequency of the complications rose from 1988-
184 93 to 2000-2005, decreased in 2006-2011, and then increased again in 2012-18, although
185 statistically not significant (**Figure 3B**).

186 Of the 175 patients with complications, 93 were males (53.1%), and 82 (46.9%) were
187 females. Males have occupied a steadily growing percentage of the total implants in every time
188 period. (**Figure 4A**). Within females, the complications increased from 1988-93 to 2000-05 and

189 reached a plateau in recent years. In males, complications went up from 1988-93 to 2000-05 and
190 then decreased until 2012-2018 ($p < 0.01$) (**Figure 4B**).

191 *Trends in comorbidities and predictors of complications*

192 Using the Charlson comorbidity index (CCI), patients' comorbidities receiving CIED have
193 increased over time (**Table 4**). However, there was no statistical difference between the CCI of
194 patients with complications and those who did not within each time frame. When analyzed
195 separately for each complication subtype, the only significant difference was noted in patients
196 with hematoma from 2000-2011, who had higher CCI than those without. (**Supplemental**
197 **Tables 2-5**). When controlled for other factors, utilizing a multivariate regression model, the
198 presence of prosthetic valves, OR 1.62 (1.11, 2.37), $p = 0.01$, was independently associated with
199 a higher risk of noninfectious complications. Obesity was independently associated with a lower
200 risk of noninfectious complications, OR 0.68 (0.40, 0.95), $p = 0.02$.

201 *Overall survival after CIED implantation*

202 The median follow-up was six years (interquartile range 3.0-10.9 years). Survival after CIED
203 complication was 63.2% at five years (95% CI 55.9-70.4) and 35.4% (95% CI 27.4-43.4) at ten
204 years, compared to 61.7% (95% CI 59.8-63.6), and 42.6% (95% CI 40.4-44.8) respectively in
205 patients without complications ($p = 0.07$) (**Figure 5A**). After PPM, ICD, and CRT implantation
206 complications, the survival was 35.8% (95% CI 26.7-44.9%), 38.2% (95% CI 18.9-57.5), and
207 15.6% (95% CI 0.0-43.2%), at ten years, respectively. In the PPM, ICD, and CRT implants
208 without complications, the ten-year survival was 40.6% (95% CI 38.1-43.1, $p = 0.25$) 53.0%
209 (95% CI 46.5-58.55%, $p = 0.10$), and 43.5% (95% CI 33.0-54.0%, $p = 0.67$) (**Figure 5BCD**).

210 Females and males with a complication did not significantly differ in survival compared to those
211 without ($p=0.21$ and 0.20 , respectively). (**Figure 6**)

212 **Discussion:**

213 Using a large population-based record-linkage study, we describe trends in the noninfectious
214 complications of CIED implantation. Our principal findings are (1) Lead dislodgement is the
215 most common noninfectious complication after CIED implant, followed by hematoma,
216 pneumothorax, and cardiac perforation. (2) The overall complications showed an up-trend from
217 1988 to 2005 and have reduced in frequency from 2005 to 2018. (3) The prevalence of
218 complications is higher in patients over 50 years of age than younger patients. (4) The
219 comorbidities of patients receiving CIED implants have steadily increased over time. (5) The
220 presence of prosthetic heart valves was an independent predictor of noninfectious complications
221 (6) Obesity tends to confer an independent risk-reduction concerning noninfectious CIED
222 complications. (7) Long-term survival of patients with acute CIED complications was not
223 different from those without complications but trended towards statistical significance.

224 *Incidence of noninfectious complications:*

225 The overall incidence of acute (30-day) noninfectious complications after CIED implants from
226 1988 to 2018 was estimated to be 6.9%, and that of major complications requiring intervention
227 was 3.8%. Prior studies have shown wide variability in the percentage of complications (7-18%)
228 due to heterogeneity in study populations, the definition of complications, data sources, and
229 follow-up duration.^{10,11,19,23-25} Our findings seem to correlate with those reported by prior
230 population-based studies^{23,25}. However, there exists a discrepancy between the results of

231 population-based studies, those obtained from administrative and claims databases^{11,26,27},
232 National ICD Registry^{18,28}, and those from large-scale clinical trials.^{10,17}

233 While clinical trials are gold-standard for assessing the effects of an intervention, the
234 inclusion criteria are often quite strict, rendering a challenge in the generalization of observed
235 events to the population.²⁹ Largescale databases, while reflecting the real-world scenario, are
236 fraught with issues regarding the accuracy of data and lack of detailed follow-up. Therefore, a
237 population-based medical record linkage system such as the REP serves as an intermediary and
238 is crucial for mitigating the limitations of alternative data sources. The definitions used in our
239 study for the complications were more inclusive than prior studies as our goal was to identify
240 major and minor complications, and their predictors.

241 *Trends in device complications:*

242 Our group has previously described that the incidence of CIED implants in Olmsted County
243 increased gradually from 1988 to 2005. However, from 2005 to 2018, a decline in CIED
244 implants has been driven by a reduction in PPM and ICD implants²². The overall trend of CIED
245 complications has been similar, increasing from 1988-93 to 2000-05, followed by a downtrend
246 until 2012-18. The individual trends of lead dislodgement, hematoma, pneumothorax, and
247 perforation followed the overall trends with slight variations when they peaked in the mid-2000s.
248 While no prior studies have encompassed three decades of data, the trends seem to follow the
249 most extensive reports from each period.^{10,17,18,23,25,30} These data appear closely related to the
250 previously described trends with *infectious* CIED complications¹⁴. The initial rise in
251 complications seen from 1988 to 2005 reflects the increase in PPM in an aging population and
252 expanding ICD indications for sudden death prevention, and the increase in the comorbidity

253 burden^{14,22}. Improved implantation techniques, use of micropuncture needles, and imaging-
254 guided access, with better periprocedural anticoagulation strategies, may have contributed to the
255 subsequent decline in complications^{31–33}.

256 *Predictors of complications*

257 Notably, the mean age of CIED implants at our institution was higher than in most prior
258 population studies and trials¹⁴. Furthermore, our patients with 77% coronary artery disease, 75%
259 valvular disease, 74% heart failure, 71% atrial fibrillation, and 62% diabetes mellitus, among
260 others, represent a much sicker baseline population than prior studies^{18–20,23,34}.

261 The presence of prosthetic heart valves was an independent predictor of noninfectious
262 complications after adjusting for other implicated factors in device complications. These could
263 be attributed to longer procedure times due to intricate and complex anatomy and the higher
264 propensity to be on anticoagulation. The incidence of hematoma was reduced after 2011, likely
265 reflecting the advantage of uninterrupted oral anticoagulation, a lower risk of pocket bleeding
266 compared to heparin bridging.³⁵

267 Interestingly, obesity was shown to have an independent protective effect against
268 noninfectious complications. The *reverse epidemiology* or *obesity paradox* is a well-established
269 entity in chronic disease conditions and has recently been extrapolated to thoracic surgeries and
270 CIED implants.^{36–39} Several mechanisms have been postulated to explain the obesity paradox,
271 but the most relevant for CIED outcomes appear to be less cardiac cachexia, improved
272 nutritional status, and better metabolic reserve with lower sarcopenia.^{36,39} Obese patients tend to
273 have a higher prevalence of comorbid conditions such as hypertension, diabetes, and sleep apnea
274 that require closer periprocedural monitoring and may contribute to improved outcomes. This

275 phenomenon is further evidenced by the extension of the obesity paradox to the critical care
276 literature.⁴⁰ It is important to note that the protective effects of obesity are likely lost at extreme
277 body mass indices (>40 kg/m²), due to an increase in procedural time and complexity, with
278 increased fluoroscopy duration.²³

279 *Survival after device implantation and sex considerations:*

280 Data regarding long-term survival after CIED complications are sparse. We describe no
281 significant difference in the 5-year and 10-year survival in patients without acute noninfectious
282 CIED complications compared to patients with complications, although trending towards
283 statistical significance.

284 Prior studies have shown that females are more likely to have short-term CIED
285 complications.^{23,41} While we saw a higher proportion of women in the patients that suffered a
286 pneumothorax or perforation in our study, female sex was not an independent predictor of
287 complications when adjusted for age and comorbid conditions. Additionally, females with acute
288 CIED complications had no difference in long-term survival compared to males.

289 *Limitations:*

290 Despite the benefits of having access to extensive population-based linkage data, our study has
291 several limitations. Akin to any observational study, we cannot rule out the confounding effect
292 due to unmeasured variables. Our sample consists predominantly of Caucasians, especially
293 among the elderly. Prior studies have suggested that the data obtained from the REP could be
294 generalized to a large percentage of the United States population. This may be inconsistent,
295 especially when applied to populations with a higher proportion of ethnic minorities. We were
296 also limited in using ICD codes for CIED implantation, which may have underestimated the

297 actual counts of procedures and comorbid conditions. Yet, the number of CIED implantations is
298 consistent with previous REP studies with manual verification of all implantations and
299 complications.

300 Although our data is population-based, most of the CIED-related care during the study
301 period was provided by a single large tertiary hospital, which may have different practice
302 patterns than community-based practices. While we understand that initial implants have a
303 different risk profile than revisions, and generator replacements, we did not have a significant
304 number of complications in lead revisions or device upgrades to make meaningful comparisons
305 to de novo implants.

306 **Conclusions:**

307 CIED implant complications cause morbidity and may require re-intervention, but not associated
308 with long term mortality. The frequency of acute noninfectious complications has been gradually
309 decreasing in recent years, likely owing to safer practices. Prosthetic heart valves appear to be an
310 independent risk factor for complications, while obesity seems protective, supplementing the
311 growing obesity paradox literature. Close monitoring of the trends and consistent vigilance
312 would be needed to maintain the downtrend of CIED complications.

313 **Funding Support and Author Disclosures:**

314 This study was made possible using the resources of the Rochester Epidemiology Project,
315 which is supported by the National Institute on Aging of the National Institutes of Health under
316 Award Number R01AG034676. The content is solely the responsibility of the authors and does
317 not necessarily represent the official views of the National Institutes of Health.

318 The study is supported by the Mayo Clinic, Department of Cardiovascular Medicine, and
319 Medtronic Inc. research funding. Paul A. Friedman is the global principal investigator on the
320 Medtronic extravascular ICD study, and has served as an advisor, with all funds going to Mayo
321 Clinic. Siva K. Mulpuru is on the Biotronik SICD advisory board, NIH CICS study section,
322 received funding from Mayo Clinic Prospective study grant, and a Biosense Webster educational
323 conference participant. Yong-Mei Cha received research funding from Medtronic Inc. The other
324 authors have no relevant disclosures.

325

326 **References:**

- 327 1. Uslan DZ, Tleyjeh IM, Baddour LM, Friedman PA, Jenkins SM, St Sauver JL, et al.
328 Temporal trends in permanent pacemaker implantation: A population-based study. *Am*
329 *Heart J* 2008;155:896–903. doi:10.1016/j.ahj.2007.12.022.
- 330 2. Merriam JA, Rajendra AB, Gold MR. Newer indications for ICD and CRT. *Cardiol Clin*
331 2014;32:181–190. doi:10.1016/j.ccl.2013.12.004.
- 332 3. Das M. Indications for ICD and cardiac resynchronization therapy for prevention of
333 sudden cardiac death. *Expert Rev Cardiovasc Ther* 2009;7:181–195.
334 doi:10.1586/14779072.7.2.181.
- 335 4. Kowlgi GN, Giudicessi JR, Barake W, Bos JM, Ackerman MJ. Efficacy of intentional
336 permanent atrial pacing in the long-term management of congenital long QT syndrome. *J*
337 *Cardiovasc Electrophysiol* 2021;32:782–789. doi:10.1111/JCE.14920.
- 338 5. Atreya AR, Cook JR, Lindenauer PK. Complications arising from cardiac implantable

- 339 electrophysiological devices: Review of epidemiology, pathogenesis and prevention for
340 the clinician. *Postgrad Med* 2016;128:223–230. doi:10.1080/00325481.2016.1151327.
- 341 6. Zhan C, Baine WB, Sedrakyan A, Steiner C. Cardiac device implantation in the United
342 States from 1997 through 2004: A population-based analysis. *J Gen Intern Med*
343 2008;23:13–19. doi:10.1007/s11606-007-0392-0.
- 344 7. Cleland JGF, Daubert J-CC, Erdmann E, Freemantle N, Gras D, Kappenberger L, et al.
345 The effect of cardiac resynchronization on morbidity and mortality in heart failure. *N Engl*
346 *J Med* 2005;352:1539–1549. doi:10.1056/NEJMoa050496.
- 347 8. Hauser RG, Hayes DL, Kallinen LM, Cannom DS, Epstein AE, Almquist AK, et al.
348 Clinical experience with pacemaker pulse generators and transvenous leads: An 8-year
349 prospective multicenter study. *Hear Rhythm* 2007;4:154–160.
350 doi:10.1016/j.hrthm.2006.10.009.
- 351 9. Udo EO, Zuithoff NPA, Van Hemel NM, De Cock CC, Hendriks T, Doevendans PA, et
352 al. Incidence and predictors of short- and long-term complications in pacemaker therapy:
353 The FOLLOWPACE study. *Hear Rhythm* 2012;9:728–735.
354 doi:10.1016/j.hrthm.2011.12.014.
- 355 10. Ellenbogen KA, Hellkamp AS, Wilkoff BL, Camunãs JL, Love JC, Hadjis TA, et al.
356 Complications arising after implantation of DDD pacemakers: The MOST experience.
357 *Am J Cardiol* 2003;92:740–741. doi:10.1016/S0002-9149(03)00844-0.
- 358 11. Koneru JN, Jones PW, Hammill EF, Wold N, Ellenbogen KA. Risk factors and temporal
359 trends of complications associated with transvenous implantable cardiac defibrillator

- 360 leads. *J Am Heart Assoc* 2018;7. doi:10.1161/JAHA.117.007691.
- 361 12. Landolina M, Gasparini M, Lunati M, Iacopino S, Boriani G, Bonanno C, et al. Long-term
362 complications related to biventricular defibrillator implantation: Rate of surgical revisions
363 and impact on survival: Insights from the italian clinicalservice database. *Circulation*
364 2011;123:2526–2535. doi:10.1161/CIRCULATIONAHA.110.015024.
- 365 13. Kusumoto FM, Schoenfeld MH, Barrett C, Edgerton JR, Ellenbogen KA, Gold MR, et al.
366 2018 ACC/AHA/HRS Guideline on the Evaluation and Management of Patients With
367 Bradycardia and Cardiac Conduction Delay: Executive Summary: A Report of the
368 American College of Cardiology/American Heart Association Task Force on Clinical
369 Practice Guidelines, and the Heart Rhythm Society. *J Am Coll Cardiol* 2019;74:932–987.
370 doi:10.1016/j.jacc.2018.10.043.
- 371 14. Dai M, Cai C, Vaibhav V, Sohail MR, Hayes DL, Hodge DO, et al. Trends of
372 Cardiovascular Implantable Electronic Device Infection in 3 Decades: A Population-
373 Based Study. *JACC Clin Electrophysiol* 2019;5:1071–1080.
374 doi:10.1016/j.jacep.2019.06.016.
- 375 15. Tobin K, Stewart J, Westveer D, Frumin H. Acute complications of permanent pacemaker
376 implantation: Their financial implication and relation to volume and operator experience.
377 *Am J Cardiol* 2000;85:774–776. doi:10.1016/S0002-9149(99)00861-9.
- 378 16. Al-Khatib SM, Anstrom KJ, Eisenstein EL, Peterson ED, Jollis JG, Mark DB, et al.
379 Clinical and Economic Implications of the Multicenter Automatic Defibrillator
380 Implantation Trial-II. *Ann Intern Med* 2005;142:593. doi:10.7326/0003-4819-142-8-
381 200504190-00007.

- 382 17. Van Eck JWM, Van Hemel NM, Zuithof P, Van Asseldonk JPM, Voskuil TLHM,
383 Grobbee DE, et al. Incidence and predictors of in-hospital events after first implantation of
384 pacemakers. *Europace* 2007;9:884–889. doi:10.1093/europace/eum113.
- 385 18. Dewland TA, Pellegrini CN, Wang Y, Marcus GM, Keung E, Varosy PD. Dual-chamber
386 implantable cardioverter-defibrillator selection is associated with increased complication
387 rates and mortality among patients enrolled in the NCDR implantable cardioverter-
388 defibrillator registry. *J Am Coll Cardiol* 2011;58:1007–1013.
389 doi:10.1016/j.jacc.2011.04.039.
- 390 19. Lee DS, Krahn AD, Healey JS, Birnie D, Crystal E, Dorian P, et al. Evaluation of Early
391 Complications Related to De Novo Cardioverter Defibrillator Implantation. Insights From
392 the Ontario ICD Database. *J Am Coll Cardiol* 2010;55:774–782.
393 doi:10.1016/j.jacc.2009.11.029.
- 394 20. Duray GZ, Schmitt J, Cicek-Hartvig S, Hohnloser SH, Israel CW. Complications leading
395 to surgical revision in implantable cardioverter defibrillator patients: Comparison of
396 patients with single-chamber, dual-chamber, and biventricular devices. *Europace*
397 2009;11:297–302. doi:10.1093/europace/eun322.
- 398 21. Boggan JC, Baker AW, Lewis SS, Dicks K V., Durkin MJ, Moehring RW, et al. An
399 Automated Surveillance Strategy to Identify Infectious Complications After Cardiac
400 Implantable Electronic Device Procedures. *Open Forum Infect Dis* 2015;2:1–8.
401 doi:10.1093/ofid/ofv128.
- 402 22. Vaidya VR, Asirvatham R, Kowlgi GN, Dai M-Y, Cochuyt JJ, Hodge DO, et al. Trends in
403 Cardiovascular Implantable Electronic Device Insertion Between 1988 and 2018 in

- 404 Olmsted County. *JACC Clin Electrophysiol* 2021. doi:10.1016/j.jacep.2021.06.006.
- 405 23. Kirkfeldt RE, Johansen JB, Nohr EA, Jorgensen OD, Nielsen JC. Complications after
406 cardiac implantable electronic device implantations: An analysis of a complete,
407 nationwide cohort in Denmark. *Eur Heart J* 2014;35:1186–1194.
408 doi:10.1093/eurheartj/eh511.
- 409 24. Chugh SS, Havmoeller R, Narayanan K, Singh D, Rienstra M, Benjamin EJ, et al.
410 Worldwide epidemiology of atrial fibrillation: A global burden of disease 2010 study.
411 *Circulation* 2014;129:837–847. doi:10.1161/CIRCULATIONAHA.113.005119.
- 412 25. Ranasinghe I, Labrosciano C, Horton D, Ganesan A, Curtis JP, Krumholz HM, et al.
413 Institutional variation in quality of cardiovascular implantable electronic device
414 implantation. *Ann Intern Med* 2019;171:309–317. doi:10.7326/M18-
415 2810/SUPPL_FILE/M18-2810_SUPPLEMENT.PDF.
- 416 26. Lin YS, Hung SP, Chen PR, Yang CH, Wo HT, Chang PC, et al. Risk Factors Influencing
417 Complications of Cardiac Implantable Electronic Device Implantation: Infection,
418 Pneumothorax and Heart Perforation: A Nationwide Population-Based Cohort Study.
419 *Medicine (Baltimore)* 2014;93. doi:10.1097/MD.0000000000000213.
- 420 27. Cantillon DJ, Exner D V., Badie N, Davis K, Gu NY, Nabutovsky Y, et al. Complications
421 and Health Care Costs Associated With Transvenous Cardiac Pacemakers in a Nationwide
422 Assessment. *JACC Clin Electrophysiol* 2017;3:1296–1305.
423 doi:10.1016/J.JACEP.2017.05.007.
- 424 28. Al-Khatib SM, Hellkamp A, Bardy GH, Hammill S, Hall WJ, Mark DB, et al. Survival of

- 425 Patients Receiving a Primary Prevention Implantable Cardioverter-Defibrillator in Clinical
426 Practice vs Clinical Trials. *JAMA* 2013;309:55–62. doi:10.1001/JAMA.2012.157182.
- 427 29. Milan D, Singh JP. Device implantation and complications: time to recalibrate our
428 expectations? *Eur Heart J* 2014;35:1167–1168. doi:10.1093/EURHEARTJ/EHT568.
- 429 30. Parsonnet V, Bernstein AD, Lindsay B. Pacemaker-implantation complication rates: An
430 analysis of some contributing factors. *J Am Coll Cardiol* 1989;13:917–921.
431 doi:10.1016/0735-1097(89)90236-2.
- 432 31. Nicholson D, Flisak M, Abudayyeh I, Dihy J, Patel P. Complications Associated with
433 Venipuncture During Cardiac Device Implantation are Significantly Reduced with
434 Utilization of Micropuncture Needle. *Circ Arrhythmia Electrophysiol* 2011;124.
435 doi:10.1161/CIRCEP.115.002921.
- 436 32. Ramza BCM, Rosenthal L, Hui R, Nsah E, Savader S, Lawrence JH, et al. Safety and
437 Effectiveness of Placement of Pacemaker and Defibrillator Leads in the Axillary Vein
438 Guided by Contrast Venography. *Am J Cardiol* 1997;80:892–896. doi:10.1016/S0002-
439 9149(97)00542-0.
- 440 33. Birnie DH, Healey JS, Wells GA, Verma A, Tang AS, Krahn AD, et al. Pacemaker or
441 Defibrillator Surgery without Interruption of Anticoagulation. *N Engl J Med*
442 2013;368:2084–2093.
443 doi:10.1056/NEJMOA1302946/SUPPL_FILE/NEJMOA1302946_DISCLOSURES.PDF.
- 444 34. da Silva KR, Albertini CM de M, Crevelari ES, de Carvalho EIJ, Fiorelli AI, Filho MM, et
445 al. Complications after Surgical Procedures in Patients with Cardiac Implantable

- 446 Electronic Devices: Results of a Prospective Registry. *Arq Bras Cardiol* 2016;107:245.
447 doi:10.5935/ABC.20160129.
- 448 35. Li HK, Chen FC, Rea RF, Asirvatham SJ, Powell BD, Friedman PA, et al. No increased
449 bleeding events with continuation of oral anticoagulation therapy for patients undergoing
450 cardiac device procedure. *Pacing Clin Electrophysiol* 2011;34:868–874.
451 doi:10.1111/J.1540-8159.2011.03049.X.
- 452 36. Jahangir A, Mirza M, Shahreyar M, Mengesha T, Shearer R, Sultan S, et al. Presence of
453 obesity is associated with lower mortality in elderly patients with implantable cardioverter
454 defibrillator. *Int J Obes* 2018 422 2017;42:169–174. doi:10.1038/ijo.2017.211.
- 455 37. Il'Giovine ZJ, Patel D, Kumar A, Trulock K, Ann Moennich L, Donnellan E, et al.
456 Obesity predicts survival after cardiac resynchronization therapy independent of effect on
457 left ventricular ejection fraction. *Circ Hear Fail* 2020.
458 doi:10.1161/CIRCHEARTFAILURE.120.007424.
- 459 38. Tulinský L, Mitták M, Tomášková H, Ostruszka P, Penka I, Ihnát P. Obesity paradox in
460 patients undergoing lung lobectomy - Myth or reality? *BMC Surg* 2018;18:1–6.
461 doi:10.1186/S12893-018-0395-2/FIGURES/1.
- 462 39. Kowlgi GN, Siontis KC. Safety of catheter ablation in obese patients: Less complicated
463 than you think. *J Cardiovasc Electrophysiol* 2022;33:664–666. doi:10.1111/JCE.15394.
- 464 40. Hutagalung R, Marques J, Kobylka K, Zeidan M, Kabisch B, Brunkhorst F, et al. The
465 obesity paradox in surgical intensive care unit patients. *Intensive Care Med*
466 2011;37:1793–1799. doi:10.1007/S00134-011-2321-2.

- 467 41. Peterson PN, Daugherty SL, Wang Y, Vidaillet HJ, Heidenreich PA, Curtis JP, et al.
468 Gender differences in procedure-related adverse events in patients receiving implantable
469 cardioverter-defibrillator therapy. *Circulation* 2009;119:1078–1084.
470 doi:10.1161/CIRCULATIONAHA.108.793463.

471

472 **Figure legends:**

473 Figure 1: Central illustration. Trends of overall CIED complications from 1988-2018. Trendlines are provided for perforations, hematomas,
474 pneumothoraces, lead dislodgements, and the mean Charlson Comorbidity Indices. CIED = cardiovascular implantable electronic device.
475 MADIT(Multicenter Automatic Defibrillator Implantation Trial); MOST (Multi-arm Optimization of Stroke Thrombolysis); DAVID (Dual Chamber
476 and VVI Implantable Defibrillator); DEFINITE (Defibrillators in Nonischemic Cardiomyopathy Treatment Evaluation); CRT (Cardiac
477 Resynchronization Therapy); ARISTOTLE (Apixaban for Reduction in Stroke and Other Thromboembolic Events in Atrial Fibrillation), ROCKET-AF
478 (Rivaroxaban Once Daily Oral Direct Factor Xa Inhibition Compared With Vitamin K Antagonism for Prevention of Stroke and Embolism Trial in
479 Atrial Fibrillation); DANISH (Danish Study to Assess the Efficacy of ICDs in Patients With Non-Ischemic Systolic Heart Failure on Mortality

480 Figure 2: The trends of CIED complications by device type. (A) Percentage of CIED implants in the year-group by device type (B) Frequency of
481 complications within device type. CIED = cardiovascular implantable electronic device; CRT = cardiac resynchronization therapy; ICD =
482 implantable cardioverter-defibrillator; PPM = permanent pacemaker.

483 Figure 3: The trends of CIED complications by age. (A) Percentage of CIED implants in the year-group by age-groups (B) Frequency of
484 complications within age groups. Abbreviations as in Figure 2.

485 Figure 4: The trends of CIED complications by sex. (A) Percentage of CIED implants in the year-group by sex (B) Frequency of complications within
486 sex groups. Abbreviations as in Figure 2.

487 Figure 5: Survival Curves in (A) Total population, (B) PPM, (C) ICD, (D) CRT, based on the presence of complications or not. Abbreviations as in
488 Figure 2.

489 Figure 6: Survival curves by sex and complications. F = Female; M = Male.

490

491

492

493

494

495 Table 1: Baseline demographics for all patients.

All Complications				
	Total (N=2536)	No Complications (N=2361)	Complications (N=175)	P value
Female sex	1068 (42.1%)	986 (41.8%)	82 (46.9%)	0.19
Mean Age (y)	73.9 ± 14.3	73.8 ± 14.3	74.8 ± 14.0	0.39
Atrial fibrillation	1790 (70.6%)	1665 (70.5%)	125 (71.4%)	0.80
CAD	1947 (76.8%)	1815 (76.9%)	132 (75.4%)	0.66
Cardiomyopathy	1166 (46.0%)	1086 (46.0%)	80 (45.7%)	0.94
Heart Failure	1858 (73.3%)	1728 (73.2%)	130 (74.3%)	0.75
CKD	1287 (50.7%)	1207(51.1%)	80(45.7%)	0.17
COPD	950 (37.5%)	882 (37.4%)	68 (38.9%)	0.69
Diabetes	1580 (62.3%)	1487 (63.0%)	93 (53.1%)	0.01

Heart transplant	40 (1.6%)	38 (1.6%)	2 (1.1%)	0.63
Hypertension	2206 (87.0%)	2048 (86.7%)	158 (90.3%)	0.18
Pulmonary hypertension	850 (33.5%)	783 (33.2%)	67 (38.3%)	0.17
Malignancy	1317 (51.9%)	1223 (51.8%)	94 (53.7%)	0.62
Obesity	1392 (54.9%)	1314 (55.7%)	78 (44.6%)	0.005
TIA/Stroke	843 (33.2%)	774 (32.8%)	69 (39.4%)	0.07
Valvular Disease	1906 (75.2%)	1766 (74.8%)	140 (80.0%)	0.12
Prosthetic Valve	436 (17.2%)	393 (16.7%)	43 (24.6%)	0.007
Implant type				0.89
CRT	169 (6.7%)	157 (6.7%)	12 (6.9%)	
ICD	440 (17.4%)	412 (17.5%)	28 (16.0%)	
Pacemaker	1927 (76.0%)	1791 (75.9%)	135 (77.1%)	

497 Table 2: Baseline demographics by type of complication.

	Perforation			Hematoma			Pneumothorax			Lead Dislodgement		
	No (N=2509)	Yes (N=27)	P value	No (N=2483)	Yes (N=53)	P value	No (N=2494)	Yes (N=42)	P value	No (N=2459)	Yes (N=75)	P value
Female sex	1050 (41.9%)	18 (66.7%)	0.009	1049 (42.3%)	19 (35.9%)	0.35	1044 (41.7%)	24 (57.1%)	0.05	1033 (42.0%)	35 (46.7%)	0.42
Mean Age (y)	73.9 ± 14.3	76.4 ± 12.2	0.34	73.9 ± 14.3	74.8 ± 15.0	0.62	73.8 ± 14.3	78.3 ± 11.5	0.04	73.9 ± 14.3	73.3 ± 13.9	0.72
Atrial fibrillation	1768 (70.5%)	22 (81.5%)	0.21	1752 (70.6%)	38 (71.7%)	0.86	1762 (70.7%)	28 (66.7%)	0.57	1734 (70.5%)	56 (74.7%)	0.43
CAD	1927 (76.8%)	20 (74.1%)	0.74	1905 (76.7%)	42 (79.3%)	0.67	1916 (76.8%)	31 (73.8%)	0.65	1893 (76.9%)	54 (72.0%)	0.32
Cardiomyopathy	1160 (46.3%)	6 (22.2%)	0.01	1132 (45.6%)	34 (64.2%)	0.007	1153 (46.2%)	13 (31.0%)	0.05	1129 (45.9%)	37 (49.3%)	0.55
Heart Failure	1841 (73.4%)	17 (63.0%)	0.22	1814 (73.1%)	44 (83.0%)	0.10	1825 (73.2%)	33 (78.6%)	0.43	1804 (73.3%)	54 (72.0%)	0.80
CKD	1276	11 (40.7%)	0.30	1259	28 (52.8%)	0.76	1268	19 (45.2%)	0.47	1254	33 (44.0%)	0.24

	(50.9%)			(50.7%)			(50.8%)			(51.0%)		
COPD	941 (37.5%)	9 (33.3%)	0.66	924 (37.2%)	26 (49.1%)	0.08	934 (37.5%)	16 (38.1%)	0.93	924 (37.6%)	26 (35.7%)	0.61
Diabetes	1564 (62.3%)	16 (59.3%)	0.74	1549 (62.4%)	31 (58.5%)	0.56	1560 (62.6%)	20 (47.6)	0.05	1540 (62.6%)	40 (53.3%)	0.10
Heart transplant	40 (1.6%)	0 (0.0%)	0.51	39 (1.6%)	1 (1.9%)	0.86	40 (1.6%)	0 (0.0%)	0.41	39 (1.6%)	1 (1.3%)	0.86
Hypertension	2179 (86.9%)	27 (100.0%)	0.04	2160 (87.0%)	46 (86.8%)	0.97	2167 (86.9%)	39 (92.9%)	0.25	2139 (86.9%)	67 (89.3%)	0.54
Pulmonary hypertension	840 (33.5%)	10 (37.0%)	0.70	828 (33.4%)	22 (41.5%)	0.21	833 (33.4%)	17 (40.5%)	0.34	825 (33.5%)	25 (33.3%)	0.97
Malignancy	1304 (52.0%)	13 (48.2%)	0.69	1285 (51.8%)	32 (60.4%)	0.21	1290 (51.7%)	27 (64.3%)	0.11	1281 (52.1%)	36 (48.0%)	0.49
Obesity	1378 (54.9%)	14 (51.8%)	0.75	1369 (55.1%)	23 (43.4%)	0.09	1377 (55.2%)	15 (35.7%)	0.01	1354 (55.0%)	38 (50.7%)	0.46
TIA/Stroke	833(33.2%)	10(37.0)	0.67	813(32.7%)	30(56.6%)	<0.001	830 (33.3%)	13 (31.0%)	0.75	818 (33.2%)	25 (33.3%)	0.99
Valvular Disease	1883 (75.1%)	23 (85.2%)	0.23	1861 (74.9%)	45 (84.9%)	0.1	1874 (75.1%)	32 (76.2%)	0.88	1847 (75.1%)	59 (78.7%)	0.48

Prosthetic Valve	432 (17.2%)	4 (14.8%)	0.74	419 (16.9%)	17 (32.1%)	0.004	431 (17.3%)	5 (11.9%)	0.36	418 (17.0%)	18 (24.0%)	0.11
Implant type			0.04			0.38			0.64			0.71
CRT	168 (6.7%)	1 (3.7%)		164 (6.6%)	5 (9.4%)		166 (6.7%)	3 (7.1%)		165 (6.7%)	4 (5.3%)	
ICD	440 (17.5%)	0 (0.0%)		428 (17.2%)	12 (22.6%)		435 (17.4%)	5 (11.9%)		429 (17.4%)	11 (14.7%)	
Pacemaker	1901 (75.8%)	26 (96.3%)		1891 (76.2%)	36 (67.9%)		1892 (75.9%)	34 (81.0%)		1867 (75.9%)	60 (80.0%)	

498

499

500

501

502

503

504

505

506 Table 3: Distribution of complications:

Complications**Number (% of total implants)**

Lead dislodgement

75 (2.9%)

Hematoma

53 (2.1%)

Pneumothorax

42 (1.6%)

Perforation

27 (1.1%)

507

508

509

510

511

512 Table 4: Charlson comorbidity index trends

Year Group	Complications	Patients analyzed	Overall Mean Charlson Comorbidity Index *	Mean Charlson Comorbidity Index	P-value †
1988-1993	No	225	1.1 ± 1.3	1.1 ± 1.3	0.20
	Yes	4		0.3 ± 0.5	
1994-1999	No	338	1.5 ± 1.5	1.5 ± 1.6	0.95
	Yes	20		1.6 ± 1.1	
2000-2005	No	525	2.0 ± 1.8	2.0 ± 1.8	0.51
	Yes	53		2.2 ± 1.8	
2006-2011	No	470	2.1 ± 1.8	2.1 ± 1.8	0.45
	Yes	42		1.9 ± 2.1	
2012-2018	No	729	2.3 ± 1.9	2.3 ± 1.9	0.90
	Yes	47		2.3 ± 2.0	

* The p-value for the Charlson Comorbidity Index trend across all periods was significant at < 0.01

† The p-values described in this column are comparing patients with and without complication for each time period

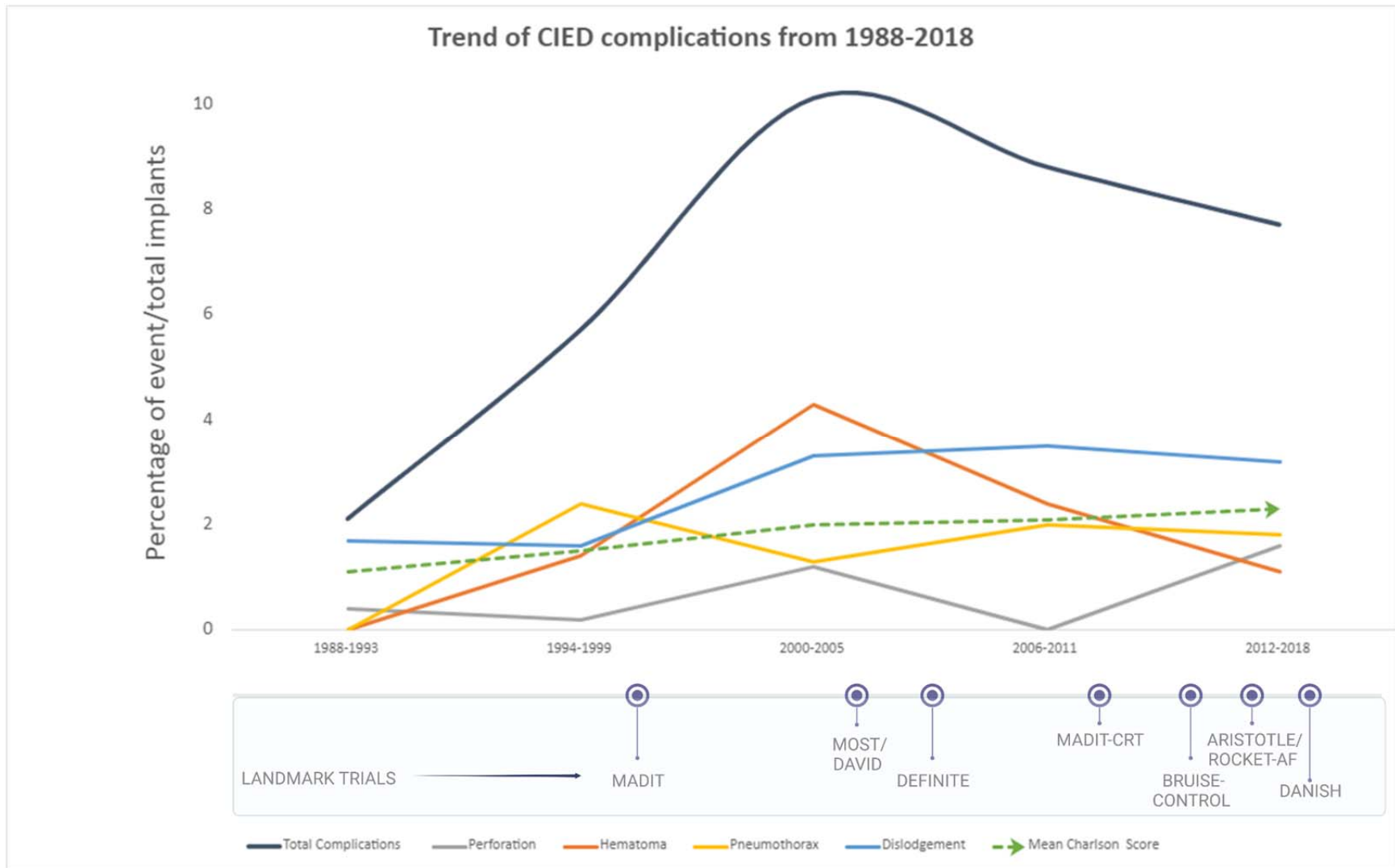
513

514 Table 5: Multivariate regression model for predictors of complications

Variable	Odds Ratio (95% Confidence Interval)	P-value
Male sex	0.82 (0.60, 1.14)	0.24
Age at event	1.01 (0.99, 1.02)	0.44
Atrial fibrillation	0.99 (0.68, 1.44)	0.94
Diabetes	0.73 (0.53, 1.02)	0.06
COPD	1.11 (0.80, 1.55)	0.52
CKD	0.80 (0.57, 1.12)	0.20
Valvular Disease	1.40 (0.91, 2.13)	0.12
Prosthetic Valves	1.62 (1.11, 2.37)	0.01
Obesity	0.68 (0.40, 0.95)	0.02
PPM implant	0.91 (0.48, 1.70)	0.76
ICD implant	0.93 (0.46, 1.90)	0.85

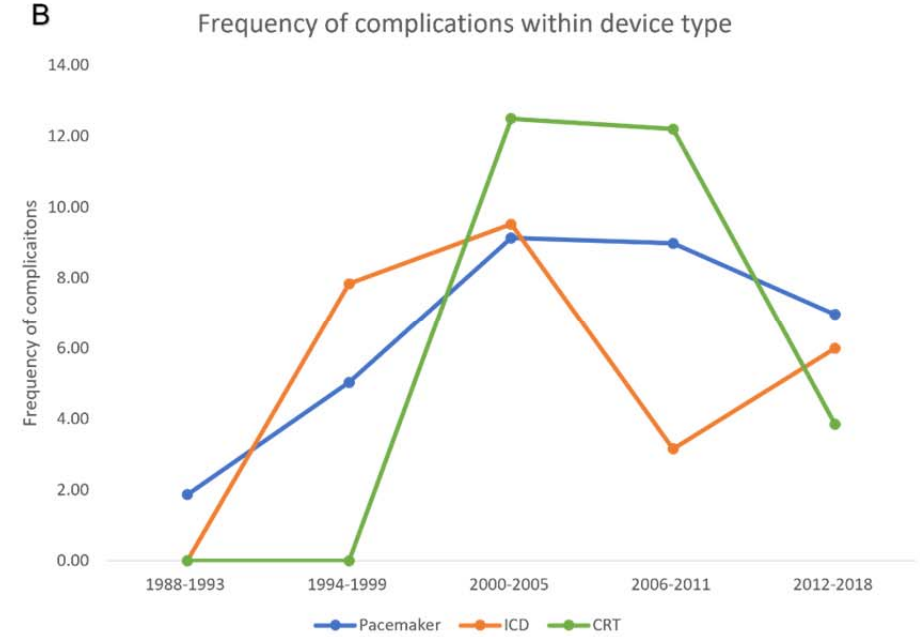
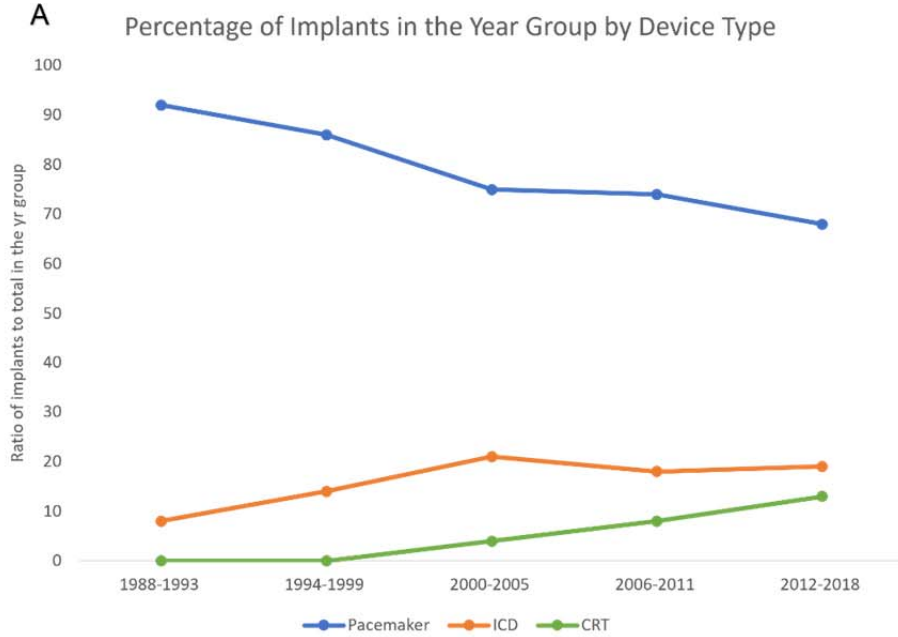
Abbreviations – COPD: Chronic Obstructive Pulmonary Disease; CKD: Chronic Kidney Disease; PPM: Permanent Pacemaker; ICD: Implantable Cardioverter-Defibrillator

515 Figure 1: Central illustration. Trends of overall CIED complications from 1988-2018. Trendlines are provided for perforations, hematomas,
516 pneumothoraces, lead dislodgements, and the mean Charlson Comorbidity Indices. CIED = cardiovascular implantable electronic device.



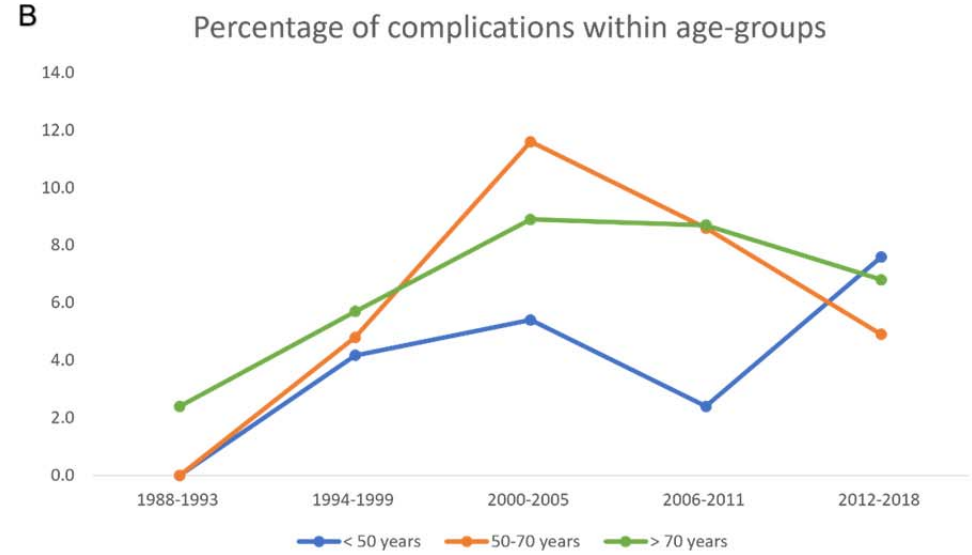
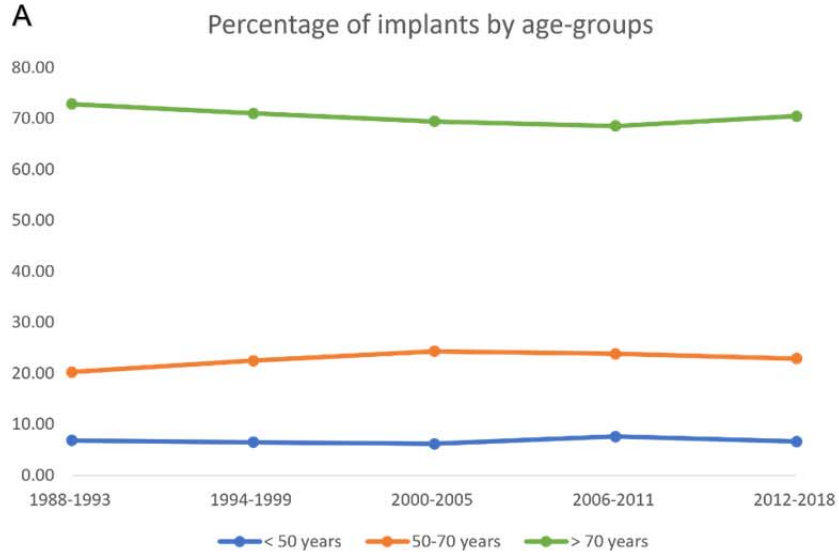
517

518 Figure 2: The trends of CIED complications by device type. (A) Percentage of CIED implants in the year-group by device type (B) Frequency of
 519 complications within device type. CIED = cardiovascular implantable electronic device; CRT = cardiac resynchronization therapy; ICD =
 520 implantable cardioverter-defibrillator; PPM = permanent pacemaker.



521
522
523
524
525
526
527

528 Figure 3: The trends of CIED complications by age. (A) Percentage of CIED implants in the year-group by age-groups (B) Frequency of
529 complications within age groups. Abbreviations as in Figure 2.



530

531

532

533

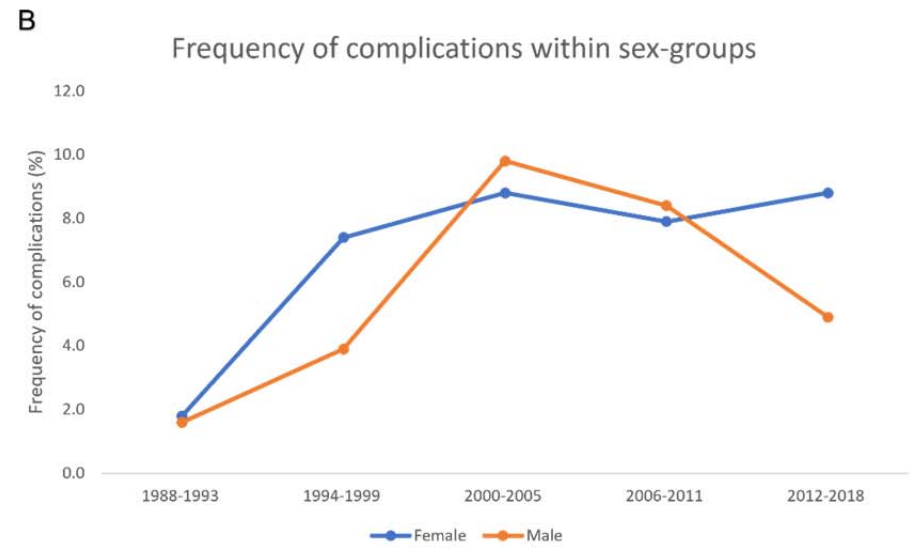
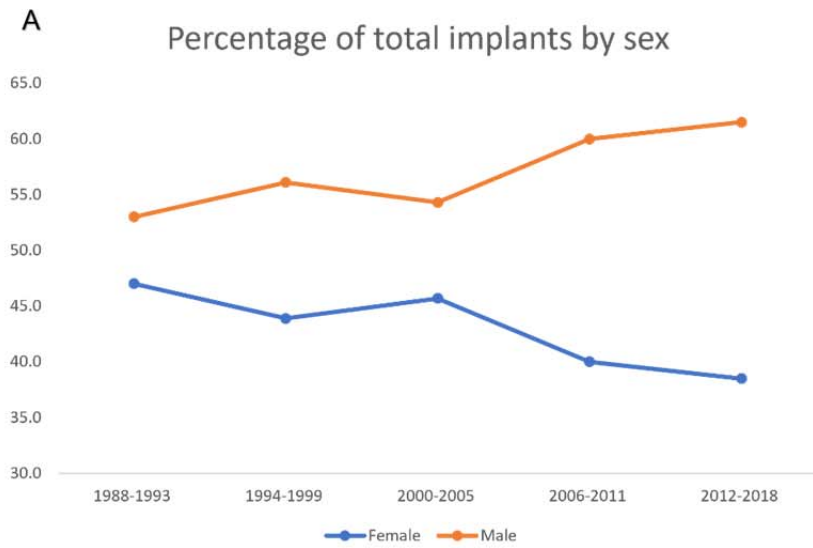
534

535

536

537

538 Figure 4: The trends of CIED complications by sex. (A) Percentage of CIED implants in the year-group by sex (B) Frequency of complications within
539 sex groups. Abbreviations as in Figure 2.



540

541

542

543

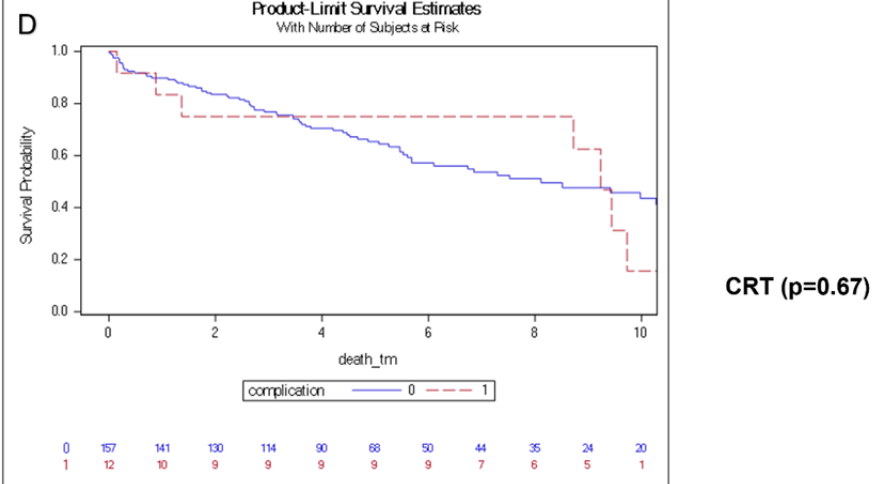
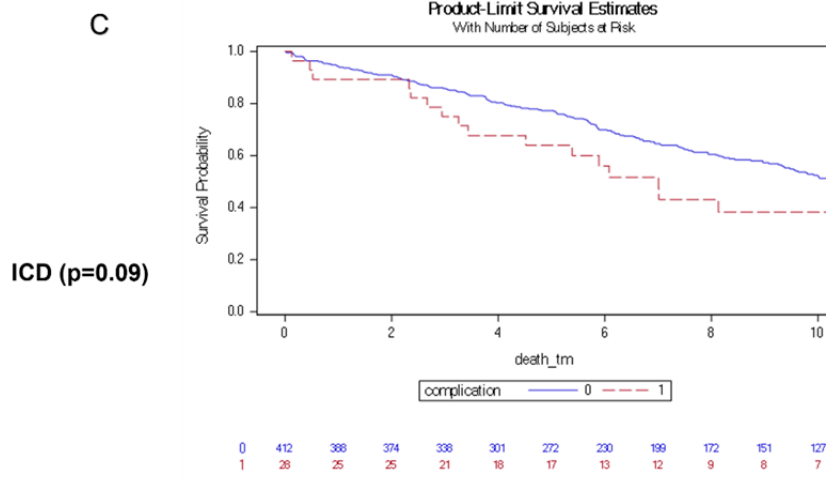
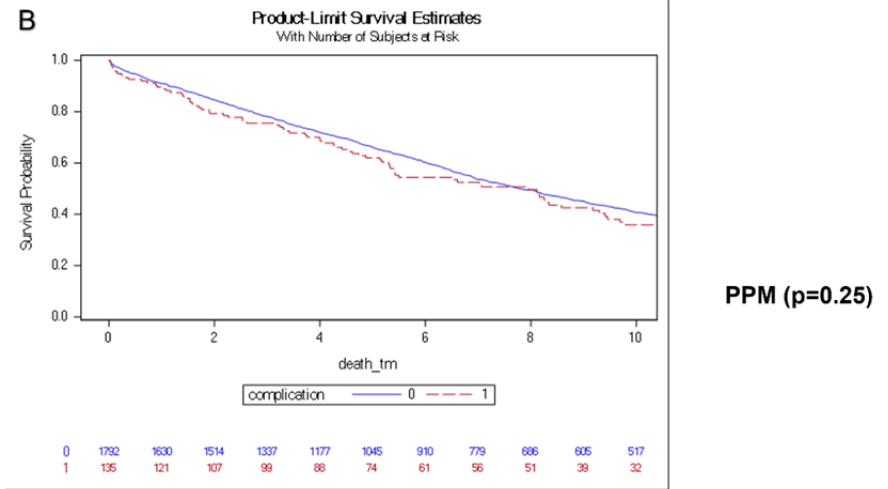
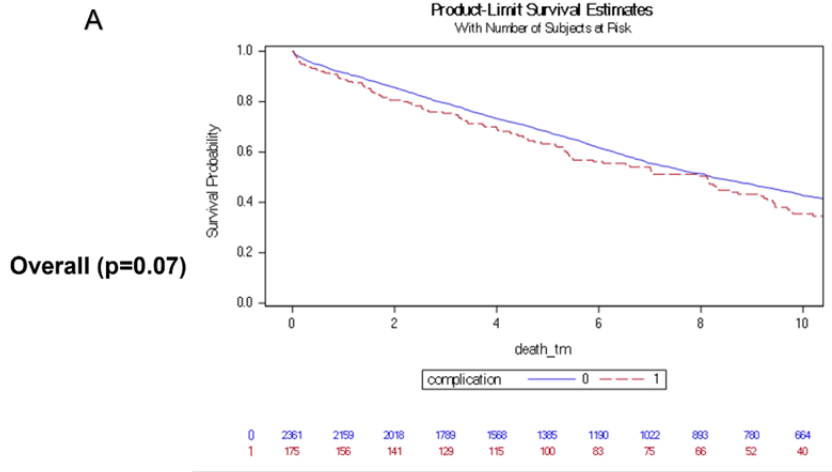
544

545

546

547

548 Figure 5: Survival Curves in (A) Total population, (B) PPM, (C) ICD, (D) CRT, based on the presence of complications or not. Abbreviations as in
 549 Figure 2.

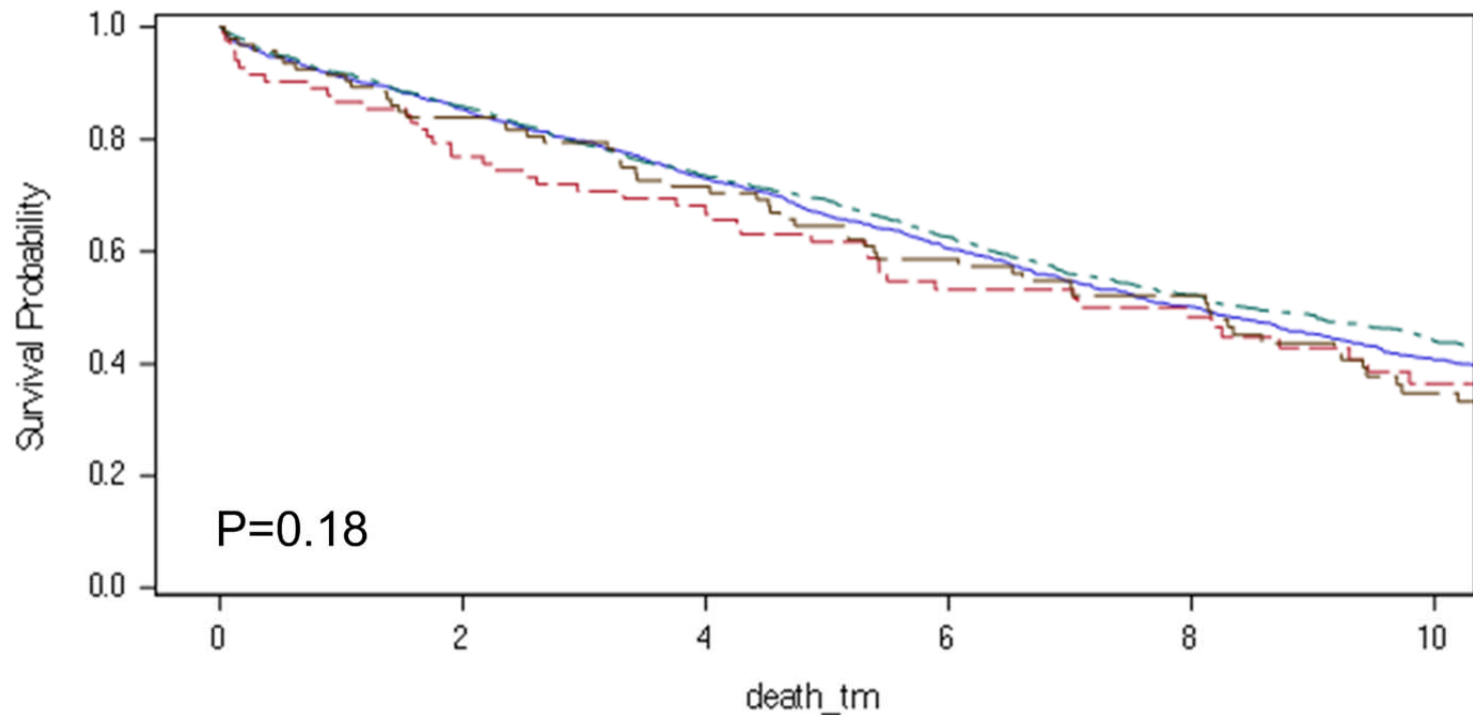


550

551

552 Figure 6: Survival curves by sex and complications. F = Female; M = Male.

Product-Limit Survival Estimates
With Number of Subjects at Risk



— 1: gender=F complication=0	- - - 2: gender=F complication=1
- - - 3: gender=M complication=0	— 4: gender=M complication=1

1	986	886	839	746	657	572	496	432	373	330	280
2	82	71	63	58	52	45	36	33	29	22	17
3	1375	1261	1179	1043	911	813	694	590	520	450	384
4	93	85	78	71	63	55	47	42	37	30	23

553

554