

1 **EARLY RECANALIZATION AMONG PATIENTS UNDERGOING BRIDGING THERAPY WITH**
2 **TENECTEPLASE OR ALTEPLASE**

3 **A Propensity Score-Based analysis from the TETRIS and PREDICT-RECANAL Registries**

4

5 Thomas Checkouri, MD;^{1,2,*} Gaspard Gerschenfeld, MD, PhD;^{1,2,*} Pierre Seners, MD, PhD;^{3,4,5}
6 Marion Yger, MD;^{1,2} Wagih Ben Hassen, MD, PhD;^{4,6} Nicolas Chausson, MD, PhD;^{4,7}
7 Stéphane Olindo, MD;⁸ Jildaz Caroff, MD, PhD;⁹ Gaultier Marnat, MD, PhD;¹⁰
8 Frédéric Clarençon, MD, PhD;¹¹ Jean-Claude Baron, MD, ScD;^{3,4} Guillaume Turc, MD, PhD;^{3,4}
9 and Sonia Alamowitch, MD;^{1,2}

10 on behalf of the TETRIS and PREDICT-RECANAL collaborators

11

12 ¹ AP-HP, Service des Urgences Cérébro-Vasculaires, Hôpital Pitié-Salpêtrière, Hôpital Saint-Antoine,
13 Sorbonne Université, Paris, France

14 ² STARE team, iCRIN, Institut du Cerveau et de la Moelle épinière, ICM, Paris, France

15 ³ Service de Neurologie, GHU Paris Psychiatrie et Neurosciences, Paris, France

16 ⁴ Université de Paris, INSERM U1266, FHU Neurovasc, Paris, France

17 ⁵ Service de Neurologie, Hôpital Fondation Rothschild, Paris, France

18 ⁶ Service de Neuroradiologie, GHU Paris Psychiatrie et Neurosciences, Paris, France

19 ⁷ Service de Neurologie, Unité Neuro-vasculaire, Hôpital Sud Francilien, Corbeil-Essonnes

20 ⁸ Service de Neurologie Vasculaire, CHU de Bordeaux, Bordeaux, France

21 ⁹ AP-HP, Service de Neuroradiologie interventionnelle (NEURI), Hôpital Bicêtre, Université Paris-Saclay,
22 Le Kremlin-Bicêtre, France

23 ¹⁰ Service de Neuroradiologie diagnostique et interventionnelle, CHU de Bordeaux, Bordeaux, France

24 ¹¹ AP-HP, Service de Neuroradiologie, Hôpital Pitié-Salpêtrière, Sorbonne Université, Paris, France

25 **Corresponding author:** Prof. Sonia Alamowitch. Service des Urgences Cérébro-Vasculaires.

26 Hôpital Pitié-Salpêtrière, 47-83 boulevard de l'Hôpital, 75651 Paris Cedex 13, France.

27 Email: sonia.alamowitch@aphp.fr. Phone: +33 1 71 97 06 51

28 * Drs Checkouri and Gerschenfeld contributed equally

29 **Word counts**

30 Total manuscript word count: 5937/6000

31 Number of references: 47

32 Number of tables: 1

33 Number of figures: 4

34 Keywords: tenecteplase; alteplase; acute ischemic stroke; thrombolysis; bridging therapy

1 **ABSTRACT** (291/300 words):

2 **Background:**

3 Intravenous thrombolysis (IVT) with alteplase or tenecteplase prior to mechanical
4 thrombectomy (MT) is the recommended treatment for large-vessel occlusion acute
5 ischemic stroke (LVOS). There are divergent data on whether these agents differ in terms of
6 early recanalization (ER) rates before MT, and little data on their potential differences in
7 terms of established ER predictors such as time elapsed between IVT and ER evaluation (IVT-
8 to-ER_{eval} time), occlusion site and thrombus length.

9 **Methods:**

10 We compared the likelihood of ER after IVT with tenecteplase or alteplase in anterior
11 circulation LVOS patients from the PREDICT-RECANAL (alteplase) and TETRIS (tenecteplase)
12 French multicenter registries. ER was defined as a modified thrombolysis in cerebral
13 infarction score 2b-3 on first angiographic run or non-invasive vascular imaging (magnetic
14 resonance or computed tomography angiography) in patients with early neurological
15 improvement. Analyses were based on propensity score overlap weighting (PSOW, leading
16 to an exact balance in baseline characteristics between the treatment groups) and confirmed
17 with adjusted logistic regression (sensitivity analysis).

18 **Results:**

19 A total of 1865 patients were included. ER occurred in 156/787 (19.8%) and 199/1078
20 (18.5%) patients treated with tenecteplase or alteplase, respectively (odds ratio, 1.09 [95%CI
21 0.83–1.44]; $P=0.52$). A differential effect of tenecteplase vs alteplase on the probability of ER
22 according to thrombus length was observed ($P_{\text{interaction}}=0.003$), with tenecteplase being
23 associated with higher odds of ER in thrombi > 10 mm (odds ratio, 2.43 [95% CI 1.02-5.81];

1 $P=0.04$). There was no differential effect of tenecteplase vs alteplase on the likelihood of ER
2 according to the IVT-to-ER_{eval} time ($P_{\text{interaction}}=0.40$) or occlusion site ($P_{\text{interaction}}=0.80$).

3 **Conclusion:**

4 Both thrombolytics achieved ER in a fifth of LVOS patients, with potentially greater
5 effect of tenecteplase in larger thrombi. There was no significant differential influence of
6 IVT-to-ER_{eval} time or occlusion site on likelihood of ER.

1 **Nonstandard Abbreviations and Acronyms**

2

3 AcT: Alteplase compared to Tenecteplase trial

4 ASMD: absolute standardized mean difference

5 ASPECTS: Alberta Stroke Program Early CT Score

6 CTA: Computed tomography angiography

7 CSC: comprehensive stroke center

8 DSA: digital subtraction angiography

9 DWI: diffusion-weighted imaging

10 ER: early recanalization

11 EXTEND-IA TNK: Tenecteplase versus Alteplase before Endovascular Therapy for Ischemic

12 Stroke trial

13 FLAIR: fluid-attenuated inversion recovery

14 ICA: internal carotid artery

15 IVT: intravenous thrombolysis

16 IVT-to-ER_{eval} time: time between intravenous thrombolysis start and evaluation of early

17 recanalization

18 LVOS: large-vessel occlusion acute ischemic stroke

19 MCA: middle cerebral artery

20 MT: mechanical thrombectomy

21 NIHSS: National Institutes of Health Stroke Scale

22 mTICI: modified Thrombolysis in Cerebral infarction

23 PSC: primary stroke center

24 PSOW: propensity score overlap weighting

25 SVS: susceptibility vessel sign

26 TETRIS: Tenecteplase Treatment in Ischemic Stroke

1 INTRODUCTION

2 In patients with large-vessel occlusion acute ischemic stroke (LVOS), early and
3 complete recanalization is associated with improved functional outcome.¹ Bridging therapy,
4 which consists in intravenous thrombolysis (IVT) followed by mechanical thrombectomy
5 (MT), is the recommended treatment to achieve timely recanalization in this population.^{2,3}
6 The role of IVT in LVOS management has been recently questioned by six randomized
7 controlled trials aiming to demonstrate the non-inferiority of a bypass strategy omitting IVT
8 before MT.⁴⁻⁹ While two trials found MT alone to be non-inferior to bridging therapy,^{8,9} the
9 others did not show its non-inferiority.⁴⁻⁷ A recent study-level meta-analysis of these trials
10 failed to demonstrate non-inferiority based on margins of 1.3% or even 5%,¹⁰ but results
11 from individual patient data meta-analysis are still pending. One potential advantage of
12 bridging therapy is IVT-induced early recanalization (ER) before MT, which may be associated
13 with better functional outcome.¹¹ Several groups have explored factors associated with ER
14 after IVT with alteplase,^{12,13} identifying three major predictors: (i) more distal occlusion site;
15 (ii) longer time elapsed between IVT and evaluation of ER (IVT-to-ER_{eval} time); and (iii)
16 thrombus properties such as thrombus length or perviousness.¹²⁻¹⁴

17 Tenecteplase is a genetically modified tissue-plasminogen activator which has
18 improved fibrin specificity and longer half-life, allowing single-bolus administration, whereas
19 alteplase dose is administered along a 60-minute infusion.^{15,16} Tenecteplase has recently
20 been recommended over alteplase before MT for LVOS in European guidelines,^{2,3,17}
21 following the demonstration of higher ER rates and better functional outcomes in the
22 Tenecteplase versus Alteplase before Endovascular Therapy for Ischemic Stroke (EXTEND-IA
23 TNK) trial.¹⁸ Subsequently, tenecteplase use in the LVOS population has increased and
24 several “real-world” studies have reported reassuring efficacy and safety data, with

1 functional outcome and intracerebral hemorrhage rates similar to those of alteplase.^{19–23}
2 Reduced process times have also been reported, owing to its simpler administration.^{24–26}
3 More recently, two non-randomized studies reported higher ER rates with tenecteplase
4 compared to alteplase,^{27,28} while in the Alteplase compared to Tenecteplase (Act) trial, both
5 thrombolytics achieved similar ER rates.²⁹ Hence, there are conflicting data on whether
6 tenecteplase actually yields higher ER rates than alteplase, and little data on potential
7 differences in terms of ER predictors between the two agents. Further knowledge on these
8 points is needed, as any potential difference in efficacy between them could have significant
9 implications in clinical practice.

10 In this study, we aimed to compare the likelihood of ER before MT among two French
11 multicentric registries of LVOS patients treated with alteplase or tenecteplase, and the
12 potential influence of the established predictors of ER, namely IVT-to-ER_{eval} time, occlusion
13 site and thrombus length.¹²

1 **METHODS**

2 The data that support the findings of this study are available from the corresponding
3 author upon agreeing to a data sharing agreement. This article follows the STROBE reporting
4 guidelines.

5 **Study Population**

6 We used two French multicenter databases of patients intended for bridging therapy
7 after demonstration of LVOS by magnetic resonance imaging (MRI) or computed
8 tomography angiography (CTA). In both groups, patients were referred for MT either at a
9 comprehensive stroke center (CSC) following direct admission, or after secondary transfer if
10 they received IVT at a primary stroke center (PSC). Data were collected from stroke centers
11 between May 2015 and March 2017 (alteplase 0.9 mg/kg group: PREDICT–RECANAL cohort,
12 8 CSC and their 23 referring PSC)¹² and from May 2015 to June 2021 (tenecteplase 0.25
13 mg/kg group: TETRIS cohort, 3 CSC and 2 PSC).²¹

14 Patients who fulfilled the following criteria were included: (i) 18 years or older, (ii)
15 evidence of LVOS of the anterior circulation, defined as an occlusion of either the intracranial
16 internal carotid artery (ICA), the first (M1) or second (M2) segment of the middle cerebral
17 artery (MCA), (iii) IVT within 4.5 hours of symptoms onset, or in the presence of a magnetic
18 resonance imaging (MRI) mismatch between diffusion-weighted imaging (DWI) and fluid-
19 attenuated inversion recovery (FLAIR) in case of unknown onset and (iv) evaluation of ER
20 within 180 minutes from IVT (see below).

21 This study was approved by the Sorbonne University Research Ethics Committee (CER–
22 2021–1053). As per current French law regarding retrospective studies of anonymized
23 standard care data, patients were informed of their participation in this research and offered
24 the possibility to withdraw. No written consent was required for this research.

1 **Clinical Data**

2 The following variables were extracted from both registries: age, sex, vascular risk
3 factors (high blood pressure, diabetes mellitus, smoking, history of myocardial infarction and
4 stroke), pre-stroke medication (antiplatelets, anticoagulants, statin), neurological severity
5 measured with the National Institutes of Health Stroke Scale (NIHSS) score on admission,
6 time between symptom onset and start of IVT (onset-to-IVT time) and IVT-to-ER_{eval} time.

7 **Imaging Data**

8 Patients underwent brain MRI on admission (or CTA in case of contraindication to
9 MRI), as recommended by current French guidelines.³⁰ Acute stroke MRI protocols slightly
10 varied across centers but included DWI, FLAIR, intracranial time-of-flight angiography and a
11 T2* or susceptibility-weighted sequence. In PREDICT-RECANAL, an experienced stroke
12 neurologist reviewed the pre-IVT imaging of all included patients.¹² In TETRIS, all pre-IVT
13 imaging of included patients were reviewed by experienced stroke neurologists or
14 neuroradiologists.²¹ In both cohorts, pre-IVT imaging reviewers had at least 5 years of
15 experience in stroke treatment. The following variables were collected: (i) intracranial
16 occlusion site: ICA, M1 dichotomized as proximal or distal based on the MCA origin-to-clot
17 interface distance (<10 and ≥10 mm, respectively), and M2 defined as starting after the main
18 MCA bifurcation; (ii) length of the susceptibility vessel sign (SVS), measured on T2*-MRI or
19 susceptibility-weighted imaging, as previously published; (iii) DWI lesion extent using the
20 Alberta Stroke Program Early CT Score (DWI-ASPECTS); and (iv) presence of a tandem
21 cervical ICA occlusion. We chose not to measure thrombus length and infarct size on CT
22 given the limited number of patients who underwent CT in both cohorts, and the lack of
23 appropriate way to pool these CT-based variables with corresponding MR-based variables in
24 the same statistical analysis.

1 ER evaluation

2 The primary outcome was substantial ER defined as a modified Thrombolysis in
3 Cerebral infarction (mTICI) score ≥ 2 on the first DSA run for the intended MT. Complete ER
4 (mTICI 3) was the secondary outcome. In patients with early neurological improvement,
5 mTICI score was evaluated on the non-invasive vascular imaging (MR angiography or CTA)
6 performed to reevaluate the need for MT in the PSC or CSC. Pre-interventional mTICI was
7 evaluated in comparison with the pre-IVT site of occlusion, as in EXTEND-IA TNK.¹⁸ ER
8 evaluators had access to both imaging to this end. In both cohorts, brain DSA, CTA or MRA
9 were evaluated for ER by experienced (at least five years) stroke neurologists or
10 neuroradiologists, who differed from the one who interpreted the imaging initially.

11 Statistical analysis

12 Quantitative variables were described as mean \pm standard deviation (SD) or median
13 (interquartile range [IQR]), as appropriate, and qualitative variables as counts and
14 percentages. For our main analysis, in order to account for imbalance in potential
15 confounders for the association between thrombolytic treatment and ER, we chose to use a
16 propensity-score overlap weighting (PSOW) approach,³¹ after multiple imputations (n=20)
17 for missing data, performed under the missing-at-random assumption.

18 Because a sizeable proportion of patients had no visible SVS,³² which precluded to
19 account for their thrombus length, we derived two PSOW models, one based on the whole
20 cohort and the other on the subgroup of patients who had a visible SVS. All baseline
21 variables (except for MRI-specific variables for the first PSOW model) were included in the
22 logistic models used to estimate the propensity score of each patient to be intended for
23 tenecteplase (as opposed to alteplase), considering potential multicollinearity. Balance of
24 baseline characteristics between the two treatment groups was assessed before and after

1 PSOW by calculation of absolute standardized mean differences (ASMD). An ASMD $\leq 10\%$
2 was interpreted as a negligible difference.³³ It is noteworthy that for all included baseline
3 variables, PSOW leads to an exact balance (i.e., ASMD=0%) between the treatment groups
4 without excluding any patients.³¹

5 The association between treatment group and ER was estimated through odds ratios
6 (ORs) and their 95% confidence intervals (95% CIs), calculated in univariable conditional
7 logistic regressions. The ORs from each imputed dataset were combined using Rubin's rules.
8 Potential heterogeneity in treatment effect depending on predefined variables (occlusion
9 site, IVT-to-ER-evaluation time, and thrombus length)¹² was assessed in conditional logistic
10 models with calculation of P values for interaction ($P_{\text{interaction}}$). Before conducting these
11 analyses, we non-parametrically examined the possibly nonlinear relationship between
12 variables of interest (IVT-to-ER_{eval} time; thrombus length) and ER with restricted cubic
13 splines. IVT-to-ER_{eval} time and thrombus length were also analyzed as categorical variables
14 (0-29 min, 30-59 min, 60-119 min, ≥ 120 min and < 10 mm vs ≥ 10 mm, respectively).

15 To assess the robustness of our results, we conducted sensitivity analyses based on
16 adjusted logistic regression, without propensity score or imputations for missing data. A
17 bidirectional stepwise method was used for the selection of variables to be included in the
18 logistic model. The selected variables were age, NIHSS score on admission, time period
19 (before or after 2016), onset-to-IVT time, occlusion site, type of transfer (secondary transfer
20 to a CSC vs direct admission), diabetes mellitus, and type of imaging for ER evaluation (DSA
21 vs other).

22 All tests were two-sided and the significance level was set at $p < 0.05$. Analyses were
23 performed using SAS 9.4 (SAS Inc). GT and TC had full access to all the data in the study and
24 take responsibility for its integrity and the data analysis.

1 RESULTS

2 Whole cohort analysis

3 Over the study period, 1865 patients were included, 787 in the tenecteplase and 1078
4 in the alteplase group (**Figure 1**). **Table 1** summarizes patients' baseline characteristics in the
5 two treatment groups. Before PSOW, several meaningful differences (ASMD > 10%) were
6 observed: compared with the alteplase group, patients in the tenecteplase group were
7 older, more frequently using anticoagulants, less frequently received IVT at a PSC and were
8 imaged with MRI, had a longer onset-to-IVT and a shorter IVT-to-ER_{eval} time, and more
9 frequently underwent DSA.

10 For the main analysis, a first PSOW model was derived after multiple imputation for
11 missing values, in which all patients were included. Both treatment groups were exactly
12 balanced (ASMD = 0%, see Methods) with regards to all baseline variables. ER occurred in
13 156 (19.8%) and 199 (18.5%) patients treated with tenecteplase or alteplase, respectively
14 (OR 1.09 [95% CI 0.83-1.44]; $P=0.52$). There was no influence of the type of imaging used to
15 assess ER (DSA vs MRA or CTA; $P_{interaction}=0.95$). Complete ER (mTICI 3) occurred in 26 (3.3%)
16 and 52 (4.8%) patients treated with tenecteplase or alteplase, respectively (OR 1.16 [95% CI
17 0.67-1.99]; $P=0.59$). There was no differential effect of treatment on the probability of ER
18 across IVT-to-ER_{eval} times, either considered as a continuous ($P_{interaction}=0.40$) or a categorical
19 variable ($P_{interaction}=0.28$; **Figure 2**). ER rates were similar with tenecteplase or alteplase
20 according to occlusion site ($P_{interaction}=0.80$; **Figure 3**).

21 We observed similar results in sensitivity analyses based on adjusted logistic
22 regression. Variables included in the multivariable model were age, NIHSS score on
23 admission, inclusion period (before 2016), onset-to-IVT time, occlusion site, secondary
24 transfer to a CSC, diabetes mellitus, and ER evaluation imaging modality. The probability of

1 ER was not significantly different in patients treated with tenecteplase vs alteplase (adjusted
2 OR 1.10 [95% CI 0.82-1.46]; $P=0.54$). Complete ER did not also differ in patients treated with
3 tenecteplase vs alteplase (adjusted OR 1.17 [0.63-2.14], $P=0.62$). There was no differential
4 treatment effect on the probability of ER across IVT-to-ER_{eval} times ($P_{\text{interaction}}=0.67$), nor by
5 occlusion site ($P_{\text{interaction}}=0.79$).

6 **Subgroup of patients with visible SVS**

7 We derived a second PSOW model for the subgroup of patients who had visible SVS on
8 pre-treatment MRI (n=1445), which led to an exact balance in baseline characteristics
9 between the two groups (**Table S1**). We observed a differential effect of tenecteplase vs
10 alteplase on the probability of ER according to thrombus length considered as a continuous
11 variable ($P_{\text{interaction}}=0.003$; **Figure 4**). This was also true ($P_{\text{interaction}}=0.001$) if SVS length was
12 dichotomized (SVS < 10 mm: OR 0.74 [95% CI 0.41-1.33], $P=0.31$; SVS \geq 10 mm: OR 2.43
13 [95%CI 1.02-5.81], $P=0.04$).

14 Similar results were observed in sensitivity analyses based on adjusted logistic
15 regression, with a differential treatment effect according to SVS length ($P_{\text{interaction}}<0.0001$).

16

1 DISCUSSION

2 In this study, we found no significant difference in odds of ER between tenecteplase
3 and alteplase in the whole cohort. However, tenecteplase use was associated with a higher
4 likelihood of ER for larger thrombi (≥ 10 mm). Occlusion site and IVT-to-ER_{eval} time affected
5 ER rates similarly for alteplase and tenecteplase.

6 The benefit of IVT before MT remains currently debated, following diverging results
7 from six IVT bypass non-inferiority trials, which almost exclusively used alteplase and were
8 conducted in CSCs. ER is among the main postulated mechanisms to explain a potential
9 benefit of IVT, as supported by two key observations: (i) shorter onset-to-reperfusion times
10 are associated with better functional outcome;³⁴ and (ii) even when incomplete, ER is
11 associated with better functional outcomes.^{35,36} However, available data from clinical trials
12 and registry studies comparing ER rates between tenecteplase and alteplase are divergent.
13 Thus, while higher ER rates were achieved with tenecteplase than alteplase in the EXTEND-IA
14 TNK trial (22% and 10%, respectively, median IVT-to-ER_{eval}: 55 minutes), this was not the
15 case in the AcT trial (around 10% for both thrombolytics, median IVT-to-ER_{eval}: 38
16 minutes).^{18,29} Notably, reported ER rates with alteplase in IVT bypass studies were even
17 lower (1 to 7%), with median IVT-to-ER_{eval} time ranging from 24 to 34 minutes.^{4,5,7-9}

18 Our analysis found similar ER rates among patients treated with tenecteplase and
19 alteplase (19.8% and 18.5%, respectively), with a median IVT-to-ER_{eval} time of 88 minutes.
20 This finding is in line with reported ER rates with alteplase in patients with IVT-to-ER_{eval} times
21 >80 minutes,^{12,37,38} and with tenecteplase in the pooled analysis of the EXTEND-IA TNK part 1
22 and 2 trials.³⁷ We observed no differential effect of tenecteplase vs alteplase on the
23 incidence of ER across IVT-to-ER_{eval} intervals in our analyses. This finding stands apart from
24 some previous data that support that, while the ER rate quickly reaches about 20% with

1 tenecteplase, even for short IVT-to-ER_{eval} times,^{18,21,27,37,39} it increases more slowly with
2 alteplase.^{28,39} While Figure 2 seems visually in favor of tenecteplase among patients with
3 short IVT-to-ER_{eval} times, the relevance of this trend is questionable given that non-linear
4 association was checked for in the continuous variable and that the interaction analysis was
5 negative. Further studies focusing on short treatment times will be required to explore the
6 possible superiority of tenecteplase in this setting. The lack of statistical significance in our
7 analysis could be driven by the higher proportion of patients secondarily transferred to a CSC
8 and hence with longer IVT-to-ER_{eval} times in our cohort (around two-thirds). Indeed,
9 secondarily transferred patients were fewer in both the EXTEND-IA TNK trial (about one-
10 fourth) and a recently published pooled analysis of individual patient data from clinical trials
11 and a prospective registry (about one-half).^{18,28} On this note, the results from the DIRECT-
12 TNK IVT bypass trial with tenecteplase (NCT05199194) are awaited with high interest.

13 Regarding thrombus location and length, we found a strong association between
14 likelihood of ER and occlusion site, as previously reported for both agents.^{13,21,28,40,41}
15 Regarding SVS length, in a recent analysis of LVOS patients treated with alteplase, this
16 variable was retained over occlusion site to predict lack of post-IVT recanalization.¹² Our
17 analysis demonstrates a favorable differential effect of tenecteplase in larger (≥ 10 mm)
18 thrombi. This result contrasts with a recent study which reported, using the clot burden
19 score, higher odds of ER with tenecteplase only in patients with low clot burden.⁴¹ Clot
20 burden score is a pragmatic approach to quantify thrombus load, and has been shown to be
21 a good predictor for ER and 3-month clinical outcome.^{42,43} While it may indirectly reflect
22 thrombus length, a recent study only found a weak correlation between SVS thrombus
23 length and clot burden score.⁴³ Hence, in the absence of additional data it is difficult to draw
24 conclusions on this discrepancy. However, our finding would appear coherent with recently

1 published results based on an *in vitro* human blood clot model, which found that
2 tenecteplase was more effective against larger clots than alteplase.⁴⁴ Further studies on this
3 topic are needed, as a better efficacy of tenecteplase compared to alteplase in larger clots
4 would be of particular importance as larger thrombi have been associated with early
5 neurological deterioration and poor clinical outcomes.^{45,46}

6 Our study has several strengths. It is based on two large multicentric LVOS patient
7 registries with similar practices. Both databases had less than 1% missing data for each
8 variable. We used a modern statistical approach, PSOW, which allows an optimal control of
9 measured confounders without exclusion of patients. Our results remained robust when
10 applying a second approach based on adjusted logistic regression.

11 Our study also has several limitations. First, it was based on retrospectively collected
12 data, with unmeasured confounding factors that may influence our results. Second, we
13 lacked additional data such as number of passes during MT, post-MT recanalization and
14 functional outcome. Third, each cohort included patients treated over different time
15 periods, and for instance most patients included in TETRIS were included after PREDICT-
16 RECANAL had ended.¹² This difference may have influenced some key metrics, as MT
17 procedures became more widely implemented in routine clinical practice over time.⁴⁷
18 Fourth, thrombus measurement was done manually, which may affect accuracy for smaller
19 thrombi, and was centralized in PREDICT-RECANAL but not in TETRIS.

20 **CONCLUSION**

21 Both tenecteplase and alteplase provide timely substantial ER in a fifth of LVOS
22 patients who undergo bridging therapy. Our result favoring tenecteplase over alteplase
23 among patients with larger thrombi may have implications for LVOS management. Other
24 potential advantages of tenecteplase in bridging therapy remain to be studied.

1 **ONLINE ONLY SUPPLEMENTARY MATERIAL**

2 Table S1. Baseline Characteristics of the subgroup of patients with visible SVS.

3

4 **ACKNOWLEDGMENTS**

5 None

6

7 **SOURCES OF FUNDING**

8 This research has received funding from the DMU Neurosciences of the
9 APHP.Sorbonne Université and the “Investissements d’avenir” ANR-10-IAIHU-06.

10

11 **DISCLOSURES**

12 All reported disclosures were outside the submitted work. Dr. Yger reported
13 reimbursement for conference registration fees from Pfizer and Boehringer Ingelheim. Dr.
14 Chausson received a grant and personal fees (consultancy and lectures) from Boehringer
15 Ingelheim and Bristol Myers Squibb. Dr Marnat reported consulting fees from Stryker
16 neurovascular, Microvention Europe, Balt Extrusion and paid lectures for Medtronic and
17 Johnson & Johnson. Prof. Clarençon received personal fees from Medtronic, Stryker, Balt
18 Extrusion and Microvention (consultant) and Penumbra (lectures); from ClinSearch (study
19 core lab); from Artedrone (board member) and a conflict of interest with Intradys and
20 Collavidence (stock options). Prof. Turc received lecturing fees from Guerbet France. Prof.
21 Alamowitch reported receiving lecturing fees from Boehringer-Ingelheim, Astra-Zeneca,
22 Pfizer and Amgen, and research grants from Boehringer-Ingelheim and Roche-Shugai. Prof.
23 Alamowitch and Turc were members of the module writing groups of the European Stroke
24 Organisation (ESO) expedited recommendation on tenecteplase for acute ischaemic stroke.

1 Prof Turc was also a member of the module writing groups of the ESO - European Society for
2 Minimally Invasive Neurological Therapy (ESMINT) expedited recommendation on indication
3 for intravenous thrombolysis before mechanical thrombectomy in patients with acute
4 ischaemic stroke and anterior circulation large vessel occlusion. No other disclosures were
5 reported.

6

7 **APPENDIX**

8 PREDICT-RECANAL collaborators: Caroline Arquizan, Yves Berthezene, Grégoire Boulouis,
9 Serge Bracard, Nicolas Bricout, Tae-Hee Cho, Arturo Consoli, Vincent Costalat, Jean-Philippe
10 Cottier, Séverine Debiais, Benjamin Gory, Hilde Henon, Bertrand Lapergue, Michael
11 Obadia, Catherine Oppenheim, Fernando Pico, Michel Piotin, Sébastien Richard, Mathieu
12 Zuber.

13 TETRIS collaborators: Clémence Blanc, David Calvet, Christian Denier, Sam Ghazanfari, Erwah
14 Kalsoum, Yann L'Hermitte, Laurence Legrand, Jean-Sebastien Liegey, Malgorzata
15 Milnerowicz, Olivier Naggara, Mathilde Poli, Kévin Premat, Igor Sibon, Candice Sabben,
16 Eimad Shotar, Didier Smadja, Laurent Spelle.

1 REFERENCES

- 2 1. Rha J-H, Saver JL. The Impact of Recanalization on Ischemic Stroke Outcome. *Stroke*. 2007;38:967–973.
- 3 2. Powers WJ, Rabinstein AA, Ackerson T, Adeoye OM, Bambakidis NC, Becker K, Biller J, Brown M,
4 Demaerschalk BM, Hoh B, et al. Guidelines for the Early Management of Patients With Acute Ischemic
5 Stroke: 2019 Update to the 2018 Guidelines for the Early Management of Acute Ischemic Stroke: A
6 Guideline for Healthcare Professionals From the American Heart Association/American Stroke
7 Association. *Stroke*. 2019;50:e344–e418.
- 8 3. Berge E, Whiteley W, Audebert H, Marchis GMD, Fonseca AC, Padiglioni C, Ossa NP de la, Strbian D,
9 Tsvigoulis G, Turc G. European Stroke Organisation (ESO) guidelines on intravenous thrombolysis for
10 acute ischaemic stroke. *European Stroke J*. 2021;239698732198986.
- 11 4. LeCouffe NE, Kappelhof M, Treurniet KM, Rinkel LA, Bruggeman AE, Berkhemer OA, Wolff L, Voorst H
12 van, Tolhuisen ML, Dippel DWJ, et al. A Randomized Trial of Intravenous Alteplase before Endovascular
13 Treatment for Stroke. *New Engl J Med*. 2021;385:1833–1844.
- 14 5. Suzuki K, Matsumaru Y, Takeuchi M, Morimoto M, Kanazawa R, Takayama Y, Kamiya Y, Shigeta K,
15 Okubo S, Hayakawa M, et al. Effect of Mechanical Thrombectomy Without vs With Intravenous
16 Thrombolysis on Functional Outcome Among Patients With Acute Ischemic Stroke. *Jama*.
17 2021;325:244–253.
- 18 6. Mitchell PJ, Yan B, Churilov L, Dowling RJ, Bush SJ, Bivard A, Huo XC, Wang G, Zhang SY, Ton MD, et al.
19 Endovascular thrombectomy versus standard bridging thrombolytic with endovascular thrombectomy
20 within 4-5 h of stroke onset: an open-label, blinded-endpoint, randomised non-inferiority trial. *Lancet*.
21 2022;400:116–125.
- 22 7. Fischer U, Kaesmacher J, Strbian D, Eker O, Cognard C, Plattner PS, Bütikofer L, Mordasini P, Deppeler S,
23 Pereira VM, et al. Thrombectomy alone versus intravenous alteplase plus thrombectomy in patients
24 with stroke: an open-label, blinded-outcome, randomised non-inferiority trial. *Lancet*. 2022;400:104–
25 115.
- 26 8. Zi W, Qiu Z, Li F, Sang H, Wu D, Luo W, Liu S, Yuan J, Song J, Shi Z, et al. Effect of Endovascular
27 Treatment Alone vs Intravenous Alteplase Plus Endovascular Treatment on Functional Independence
28 in Patients With Acute Ischemic Stroke. *Jama*. 2021;325:234–243.
- 29 9. Yang P, Zhang Y, Zhang L, Zhang Y, Treurniet KM, Chen W, Peng Y, Han H, Wang J, Wang S, et al.
30 Endovascular Thrombectomy with or without Intravenous Alteplase in Acute Stroke. *New Engl J Med*.
31 2020;382:1981–1993.
- 32 10. Turc G, Tsvigoulis G, Audebert HJ, Boogaarts H, Bhogal P, Marchis GMD, Fonseca AC, Khatri P, Mazighi
33 M, Ossa NP de la, et al. European Stroke Organisation – European Society for Minimally Invasive
34 Neurological Therapy expedited recommendation on indication for intravenous thrombolysis before
35 mechanical thrombectomy in patients with acute ischaemic stroke and anterior circulation large vessel
36 occlusion. *European Stroke J*. 2022;7:I–XXVI.
- 37 11. Tsvigoulis G, Katsanos AH, Schellinger PD, Köhrmann M, Varelas P, Magoufis G, Paciaroni M, Caso V,
38 Alexandrov AW, Guroi E, et al. Successful Reperfusion With Intravenous Thrombolysis Preceding
39 Mechanical Thrombectomy in Large-Vessel Occlusions. *Stroke*. 2018;49:232–235.
- 40 12. Seners P, Turc G, Naggara O, Henon H, Piotin M, Arquizan C, Cho T-H, Narata A-P, Lapergue B, Richard
41 S, et al. Post-Thrombolysis Recanalization in Stroke Referrals for Thrombectomy. *Stroke*.
42 2018;49:2975–2982.
- 43 13. Menon BK, Al-Ajlan FS, Najm M, Puig J, Castellanos M, Dowlathshahi D, Calleja A, Sohn S-I, Ahn SH,
44 Poppe A, et al. Association of Clinical, Imaging, and Thrombus Characteristics With Recanalization of
45 Visible Intracranial Occlusion in Patients With Acute Ischemic Stroke. *Jama*. 2018;320:1017.

- 1 14. Seners P, Delepierre J, Turc G, Henon H, Piotin M, Arquizan C, Cho T-H, Lapergue B, Cottier J-P, Richard
2 S, et al. Thrombus Length Predicts Lack of Post-Thrombolysis Early Recanalization in Minor Stroke With
3 Large Vessel Occlusion. *Stroke*. 2019;50:761–764.
- 4 15. Tanswell P, Modi N, Combs D, Danays T. Pharmacokinetics and Pharmacodynamics of Tenecteplase in
5 Fibrinolytic Therapy of Acute Myocardial Infarction. *Clin Pharmacokinet*. 2002;41:1229–1245.
- 6 16. Acheampong P, Ford GA. Pharmacokinetics of alteplase in the treatment of ischaemic stroke. *Expert
7 Opin Drug Met*. 2012;8:271–281.
- 8 17. Alamowitch S, Turc G, Palaiodimou L, Bivard A, Cameron A, Marchis GMD, Fromm A, Körv J, Roaldsen
9 MB, Katsanos AH, et al. European Stroke Organisation (ESO) expedited recommendation on
10 tenecteplase for acute ischaemic stroke. *European Stroke J*. 2023;239698732211500.
- 11 18. Campbell BCV, Mitchell PJ, Churilov L, Yassi N, Kleinig TJ, Dowling RJ, Yan B, Bush SJ, Dewey HM, Thijs
12 V, et al. Tenecteplase versus Alteplase before Thrombectomy for Ischemic Stroke. *New Engl J
13 Medicine*. 2018;378:1573–1582.
- 14 19. Katsanos AH, Psychogios K, Turc G, Sacco S, Sousa DA de, Marchis GMD, Palaiodimou L, Filippou DK,
15 Ahmed N, Sarraj A, et al. Off-Label Use of Tenecteplase for the Treatment of Acute Ischemic Stroke.
16 *Jama Netw Open*. 2022;5:e224506.
- 17 20. Zhong CS, Beharry J, Salazar D, Smith K, Withington S, Campbell BCV, Wilson D, Heron CL, Mason D,
18 Duncan R, et al. Routine Use of Tenecteplase for Thrombolysis in Acute Ischemic Stroke. *Stroke*.
19 2021;52:1087–1090.
- 20 21. Gerschenfeld G, Smadja D, Turc G, Olindo S, Laborne F-X, Yger M, Caroff J, Gonçalves B, Seners P,
21 Cantier M, et al. Functional Outcome, Recanalization, and Hemorrhage Rates After Large Vessel
22 Occlusion Stroke Treated With Tenecteplase Before Thrombectomy. *Neurology*. 2021;97:e2173–
23 e2184.
- 24 22. Katsanos AH, Safouris A, Sarraj A, Magoufis G, Leker RR, Khatri P, Cordonnier C, Leys D, Shoamanesh A,
25 Ahmed N, et al. Intravenous Thrombolysis With Tenecteplase in Patients With Large Vessel Occlusions:
26 Systematic Review and Meta-Analysis. *Stroke*. 2021;52:308–312.
- 27 23. Tsvigoulis G, Katsanos AH, Christogiannis C, Faouzi B, Mavridis D, Dixit AK, Palaiodimou L, Khurana D,
28 Petruzzellis M, Psychogios K, et al. Intravenous Thrombolysis with Tenecteplase for the Treatment of
29 Acute Ischemic Stroke. *Ann Neurol*. 2022;92:349–357.
- 30 24. Hall J, Thon JM, Heslin M, Thau L, Yeager T, Siegal T, Vigilante N, Kamen S, Tiongson J, Jovin TG, et al.
31 Tenecteplase Improves Door-to-Needle Time in Real-World Acute Stroke Treatment. *Stroke Vasc
32 Interventional Neurology*. 2021;1.
- 33 25. Mahawish K, Gommans J, Kleinig T, Lallu B, Tyson A, Ranta A. Switching to Tenecteplase for Stroke
34 Thrombolysis. *Stroke*. 2021;52:e590–e593.
- 35 26. Gerschenfeld G, Liegey J-S, Laborne F-X, Yger M, Lyon V, Checkouri T, Tricard-Dessagne B, Marnat G,
36 Clarençon F, Chausson N, et al. Treatment times, functional outcome, and hemorrhage rates after
37 switching to tenecteplase for stroke thrombolysis: Insights from the TETRIS registry. *European Stroke J*.
38 2022;239698732211137.
- 39 27. Hendrix P, Collins MK, Griessenauer CJ, Goren O, Melamed I, Weiner GM, Dalal SS, Kole MJ, Noto A,
40 Schirmer CM. Tenecteplase versus alteplase before mechanical thrombectomy: experience from a US
41 healthcare system undergoing a system-wide transition of primary thrombolytic. *J Neurointerv Surg*.
42 2022;jnis-2022-019662.
- 43 28. Yogendrakumar V, Beharry J, Churilov L, Alidin K, Ugalde M, Pesavento L, Weir L, Mitchell PJ, Kleinig TJ,
44 Yassi N, et al. Tenecteplase Improves Reperfusion Across Time in Large Vessel Stroke. *Ann Neurol*.
45 2022;
- 46 29. Menon BK, Buck BH, Singh N, Deschaintre Y, Almekhlafi MA, Coutts SB, Thirunavukkarasu S,
47 Khosravani H, Appireddy R, Moreau F, et al. Intravenous tenecteplase compared with alteplase for

- 1 acute ischaemic stroke in Canada (AcT): a pragmatic, multicentre, open-label, registry-linked,
2 randomised, controlled, non-inferiority trial. *Lancet*. 2022;
- 3 30. Santé HA de. Accident vasculaire cérébral : prise en charge précoce (alerte, phase préhospitalière,
4 phase hospitalière initiale, indications de la thrombolyse). Mai 2009. *HAS*. 2009;
- 5 31. Thomas LE, Li F, Pencina MJ. Overlap Weighting. *Jama*. 2020;323:2417–2418.
- 6 32. Soize S, Manceau P-F, Gauberti M, Herbin T, Zuber M, Pierot L, Touzé E. Susceptibility Vessel Sign in
7 Relation With Time From Onset to Magnetic Resonance Imaging. *Stroke*. 2021;52:1839–1842.
- 8 33. Austin PC. Balance diagnostics for comparing the distribution of baseline covariates between
9 treatment groups in propensity-score matched samples. *Statist. Med*. 2009;28:3083–3107.
- 10 34. Saver JL, Goyal M, Lutgt A van der, Menon BK, Majoie CBLM, Dippel DW, Campbell BC, Nogueira RG,
11 Demchuk AM, Tomasello A, et al. Time to Treatment With Endovascular Thrombectomy and Outcomes
12 From Ischemic Stroke: A Meta-analysis. *Jama*. 2016;316:1279–1288.
- 13 35. Alves HC, Treurniet KM, Jansen IGH, Yoo AJ, Dutra BG, Zhang G, Yo L, Es ACGM van, Emmer BJ, Berg R
14 van den, et al. Thrombus Migration Paradox in Patients With Acute Ischemic Stroke. *Stroke*.
15 2019;50:3156–3163.
- 16 36. Flint AC, Avins AL, Eaton A, Uong S, Cullen SP, Hsu DP, Edwards NJ, Reddy PA, Klingman JG, Rao VA, et
17 al. Risk of Distal Embolization From tPA (Tissue-Type Plasminogen Activator) Administration Prior to
18 Endovascular Stroke Treatment. *Stroke*. 2020;51:2697–2704.
- 19 37. Campbell BCV, Mitchell PJ, Churilov L, Yassi N, Kleinig TJ, Dowling RJ, Yan B, Bush SJ, Thijs V, Scroop R,
20 et al. Effect of Intravenous Tenecteplase Dose on Cerebral Reperfusion Before Thrombectomy in
21 Patients With Large Vessel Occlusion Ischemic Stroke. *Jama*. 2020;323:1257–1265.
- 22 38. Gerschenfeld G, Muresan I-P, Blanc R, Obadia M, Abrivard M, Piotin M, Alamowitch S. Two Paradigms
23 for Endovascular Thrombectomy After Intravenous Thrombolysis for Acute Ischemic Stroke. *Jama*
24 *Neurol*. 2017;74:549.
- 25 39. Seners P, Caroff J, Chausson N, Turc G, Denier C, Piotin M, Aghasaryan M, Alecu C, Chassin O, Lapergue
26 B, et al. Recanalization before Thrombectomy in Tenecteplase vs. Alteplase-Treated Drip-and-Ship
27 Patients. *J Stroke*. 2019;21:105–107.
- 28 40. Seners P, Turc G, Maïer B, Mas J-L, Oppenheim C, Baron J-C. Incidence and Predictors of Early
29 Recanalization After Intravenous Thrombolysis. *Stroke*. 2016;47:2409–2412.
- 30 41. Yogendrakumar V, Churilov L, Guha P, Beharry J, Mitchell PJ, Kleinig TJ, Yassi N, Thijs V, Wu TY, Brown
31 H, et al. Tenecteplase Treatment and Thrombus Characteristics Associated With Early Reperfusion: An
32 EXTEND-IA TNK Trials Analysis. *Stroke*. 2023;
- 33 42. Legrand L, Naggara O, Turc G, Mellerio C, Roca P, Calvet D, Labeyrie M-A, Baron J-C, Mas J-L, Meder J-
34 F, et al. Clot Burden Score on Admission T2*-MRI Predicts Recanalization in Acute Stroke. *Stroke*.
35 2018;44:1878–1884.
- 36 43. Zheng M-Z, Yang Q-Y, Lu X-D, Hu S-L, Chai C, Shen W, Chang B-G, Wang Z-Y, Xia S. Middle cerebral
37 artery thrombus susceptibility-weighted imaging mapping predicts prognosis. *Quantitative Imaging*
38 *Medicine Surg*. 2019;9:1556–1565.
- 39 44. Keric N, Döbel M, Krenzlin H, Kurz E, Tanyildizi Y, Heimann A, König J, Kempfski O, Ringel F, Masomi-
40 Bornwasser J. Comparative analysis of fibrinolytic properties of Alteplase, Tenecteplase and
41 Urokinase in an in vitro clot model of intracerebral haemorrhage. *J Stroke Cerebrovasc Dis*.
42 2020;29:105073.
- 43 45. He L, Wang J, Wang F, Zhang L, Zhang L, Zhao W, Weng X, Xu F. The length of susceptibility vessel sign
44 predicts early neurological deterioration in minor acute ischemic stroke with large vessel occlusion.
45 *Bmc Neurol*. 2021;21:421.

- 1 46. Liu H, Mei W, Huang Y, Li Y, Chen Z, Li D, Ye H, Zhang J. Susceptibility vessel sign predicts poor clinical
2 outcome for acute stroke patients untreated by thrombolysis. *Exp Ther Med*. 2017;14:5207–5213.
- 3 47. Sablot D, Farouil G, Laverdure A, Arquizan C, Bonafe A. Shortening time to reperfusion after transfer
4 from a primary to a comprehensive stroke center. *Neurology Clin Pract*. 2019;9:417–423.

TABLES

Table 1. Baseline Characteristics (whole cohort, PSOW)

Characteristic	Tenecteplase (n=787)	Alteplase (n=1078)	ASMD before PSOW* (%)
Patient history			
Age, mean (SD), y	71.8 (15.6)	69.0 (15.0)	18
Male	367 (46.6%)	550 (51.0%)	8
Hypertension	502 (63.8%)	614 (57.0%)	10
Diabetes mellitus	143 (18.2%)	169 (15.7%)	6
Current smoking	161 (20.5%)	181 (16.8%)	10
Previous stroke	100 (12.7%)	109 (10.1%)	8
Antiplatelets	231 (29.4%)	351 (32.6%)	9
Anticoagulants	83 (10.5%)	50 (4.6%)	23
Statin	234 (29.7%)	296 (27.5%)	2
Pre-IVT characteristics			
Secondary transfer to a CSC	599 (76.1%)	641 (59.5%)	39
Inclusion before 2016	109 (13.9%)	381 (35.3%)	54
NIHSS score	16 (10-20)	16 (11-20)	4
Onset-to-IVT time, min	150 (120-180)	145 (120-175)	14
Pre-IVT imaging			
MRI	718 (91.2%)	992 (92.0%)	11
Occlusion site			
Internal carotid artery	132 (16.8%)	237 (22.0%)	13
Proximal M1	270 (34.3%)	445 (41.3%)	14
Distal M1	234 (29.7%)	221 (20.5%)	21
M2	151 (19.2%)	175 (16.2%)	8
Tandem occlusion	117 (14.9%)	158 (14.7%)	1
ER evaluation			
DSA	774 (98.3%)	996 (92.4%)	28
IVT-to-ER _{eval} time, min	80 (60-102)	94 (55-127)	26

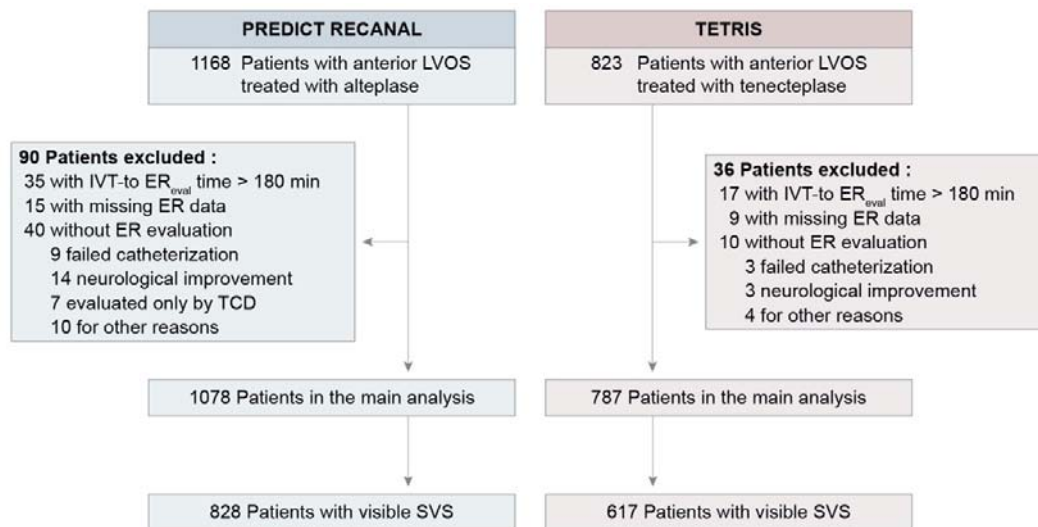
Categorical variables are expressed as numbers (%) and continuous variables as median (IQR) unless mentioned otherwise.

*PSOW leads to an exact balance for all baseline variables (i.e., ASMD=0%).³¹

ASMD indicates absolute standardized mean difference; CSC, comprehensive stroke center; DSA, digital subtraction angiography; ER, early recanalization; IQR, interquartile range; IVT, intravenous thrombolysis; IVT-to-ER_{eval} time, time between IVT start and evaluation of ER; M1, first segment of the middle cerebral artery; M2, second segment of the middle cerebral artery; MRI, magnetic resonance imaging; NIHSS, National Institutes of Health Stroke Scale; PSOW, propensity score overlap weighting and SD, standard deviation.

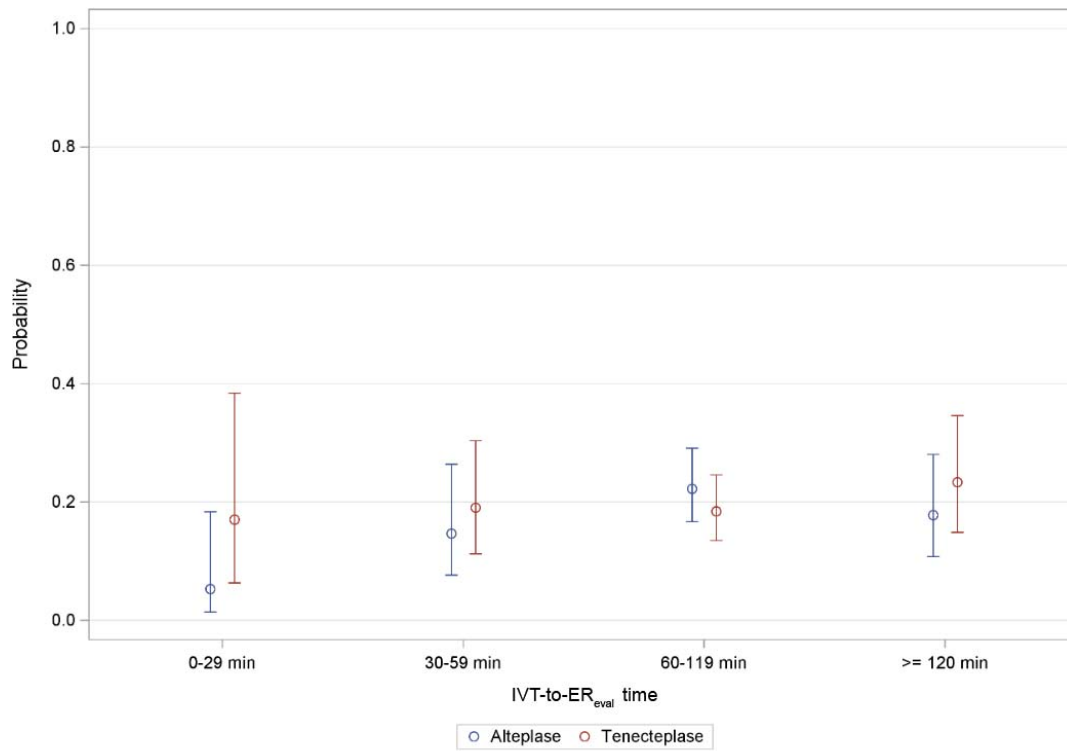
FIGURES

Figure 1. Flow Chart.



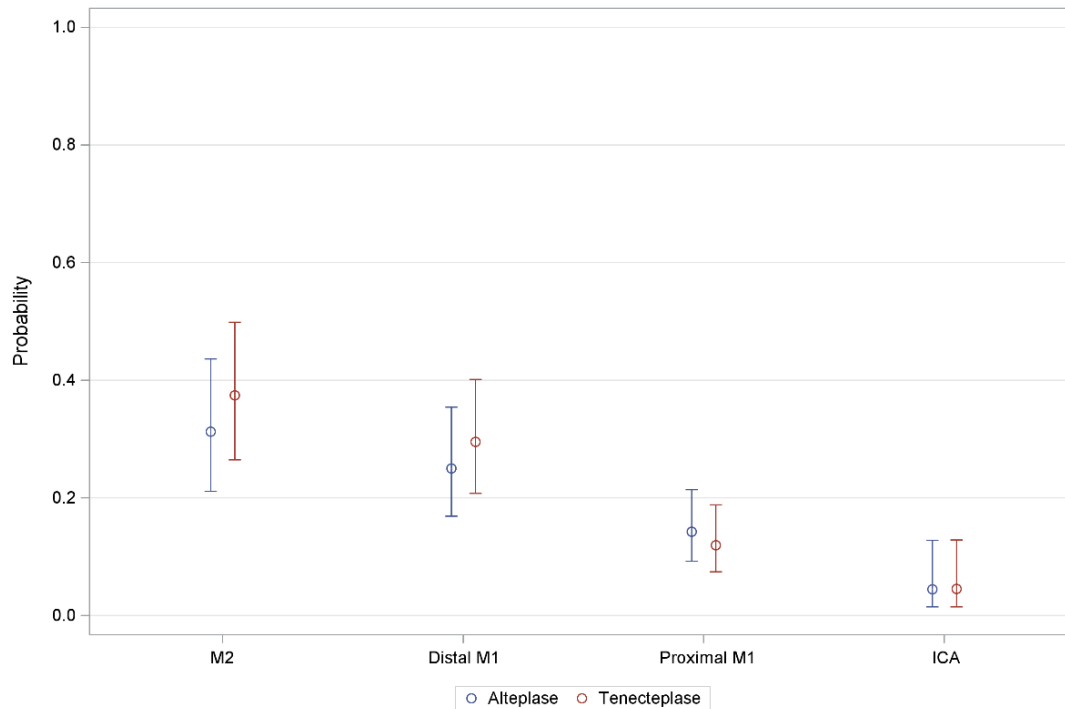
ER indicates early recanalization; IVT-to-ER_{eval} time, time between IVT start and evaluation of ER; LVOS, large-vessel occlusion acute ischemic stroke; SVS, susceptibility vessel sign.

Figure 2. Probability of early recanalization in patients treated with tenecteplase or alteplase, according to IVT-to-ER_{eval} time.



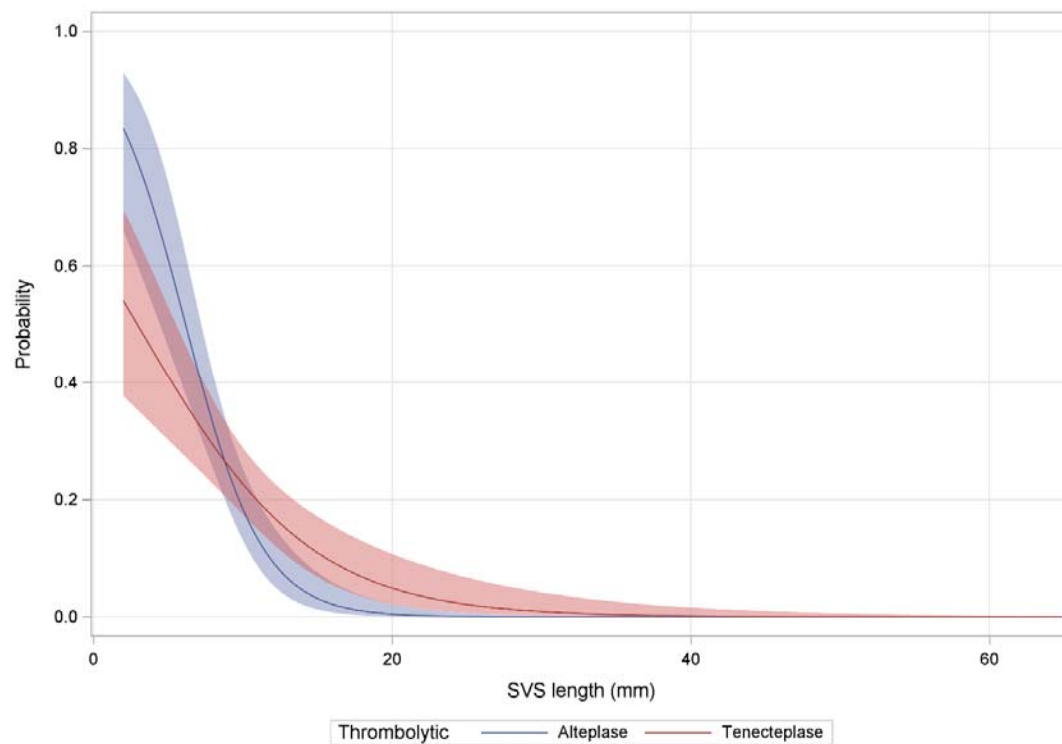
ER indicates early recanalization; IVT-to-ER_{eval} time, time between IVT start and evaluation of ER.

Figure 3. Probability of early recanalization in patients treated with tenecteplase or alteplase, according to the occlusion site.



ICA indicates internal carotid artery; M2, second segment of the middle cerebral artery; M1, first segment of the middle cerebral artery.

Figure 4. Probability of early recanalization in patients treated with tenecteplase or alteplase, according to thrombus length.



SVS indicates susceptibility vessel sign.